

V&V Reference Report

L2 ASCDS Version : 8.4.4

Observation 9245 - L2 Version 2
Chandra X-Ray Center

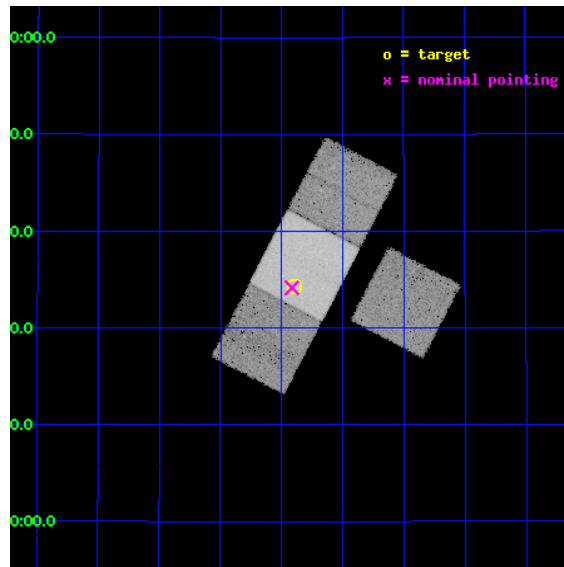
L2 Processing Date : May 10 2012

Contents

1	Front	2
2	OBI	3
2.1	OBI	3
2.1.1	Images	3
2.1.2	Bias	3
2.1.3	Parameters	4
2.1.4	Events	4
2.2	Compared Parameters	5
2.3	Aspect	6
2.4	Star Slots	9
2.4.1	Slot 3	9
2.4.2	Slot 4	10
2.4.3	Slot 5	11
2.4.4	Slot 6	12
2.4.5	Slot 7	13
2.5	FID Slots	14
2.5.1	Slot 0	14
2.5.2	Slot 1	15
2.5.3	Slot 2	16
A	Summary	17
A.1	Status	17
A.2	Comments	17

1 Front

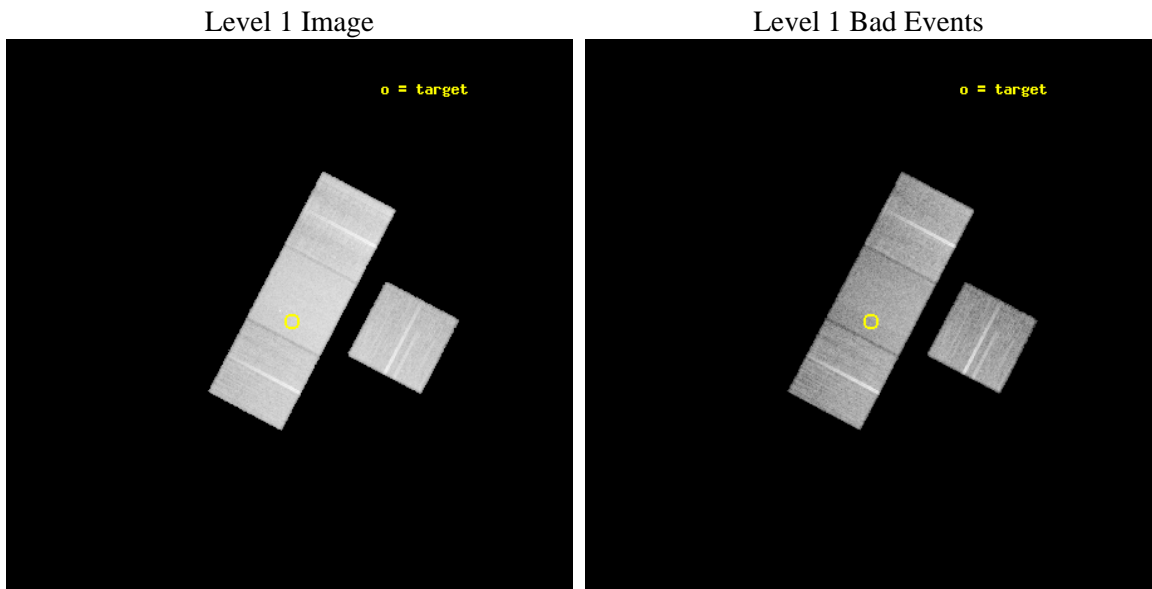
seq_num	701686	Sequence number
obs_id	9245	Observation id
title	Orientation effects in the X-ray and multi-wavelength properties of high-z, 3CRR quasars.	Proposal title
observer	Dr. Belinda Wilkes	Principal investigator
object	3CRR 68.2	Source name
dtcycle	0	
cycle	P	events from which exps? Prim/Second/Both
ra_targ	38.599167	Observer's specified target RA [deg]
dec_targ	31.571722	Observer's specified target Dec [deg]
ra_nom	38.604043472366	Nominal RA [deg]
dec_nom	31.569257853944	Nominal Dec [deg]
roll_nom	297.69308760558	Nominal Roll [deg]
revision	2	Processing version of data
ontime	20146.900154948	Sum of GTIs [s]
livetime	19883.666072492	Livetime [s]
ontime3	20146.900154948	Sum of GTIs [s]
ontime6	20146.900154948	Sum of GTIs [s]
ontime7	20146.900154948	Sum of GTIs [s]
ontime8	20146.900154948	Sum of GTIs [s]
l2events	173320	Number of level 2 events



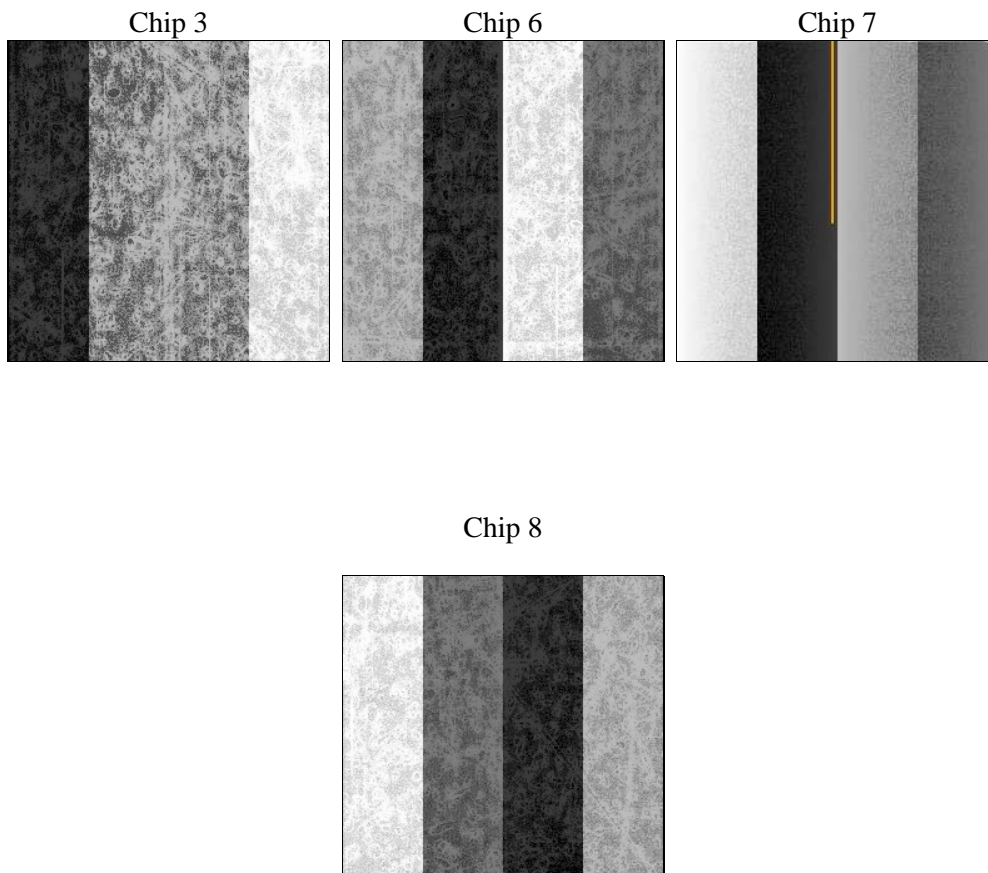
2 OBI

2.1 OBI

2.1.1 Images



2.1.2 Bias



2.1.3 Parameters

obi_num	0	Obi number	sched_exp_time	20000.000000	[s] Scheduled observation exposure time
ascdsver	8.4.4	Processing system revision	ontime	20146.900154948	Sum of GTIs [s]
caldsver	4.4.9	 	ontime3	20146.900154948	Sum of GTIs [s]
date	2012-05-10T23:01:58	Date and time of file creation	ontime6	20146.900154948	Sum of GTIs [s]
revision	2	Processing version of data	ontime7	20146.900154948	Sum of GTIs [s]
			ontime8	20146.900154948	Sum of GTIs [s]
			l1events	910078	Number of level 1 events

2.1.4 Events

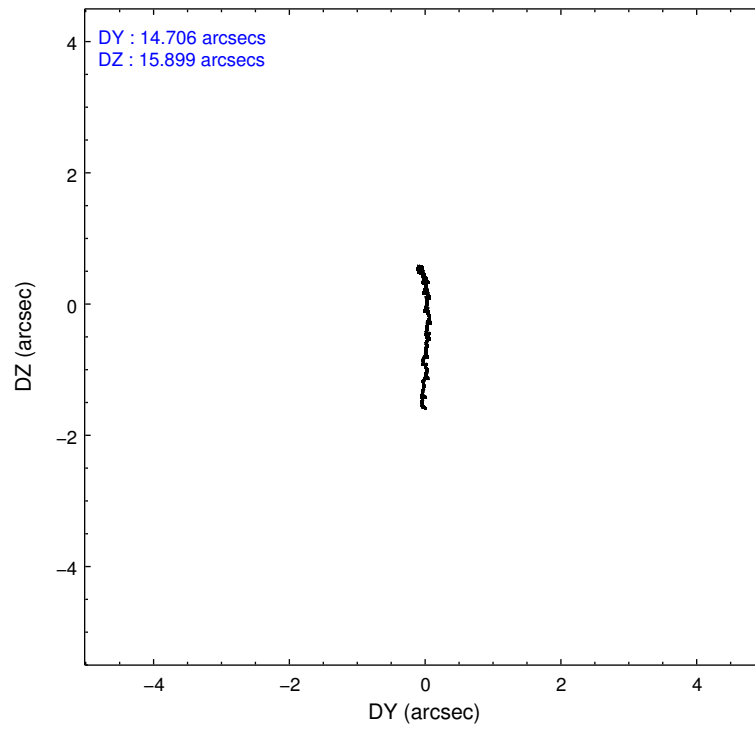
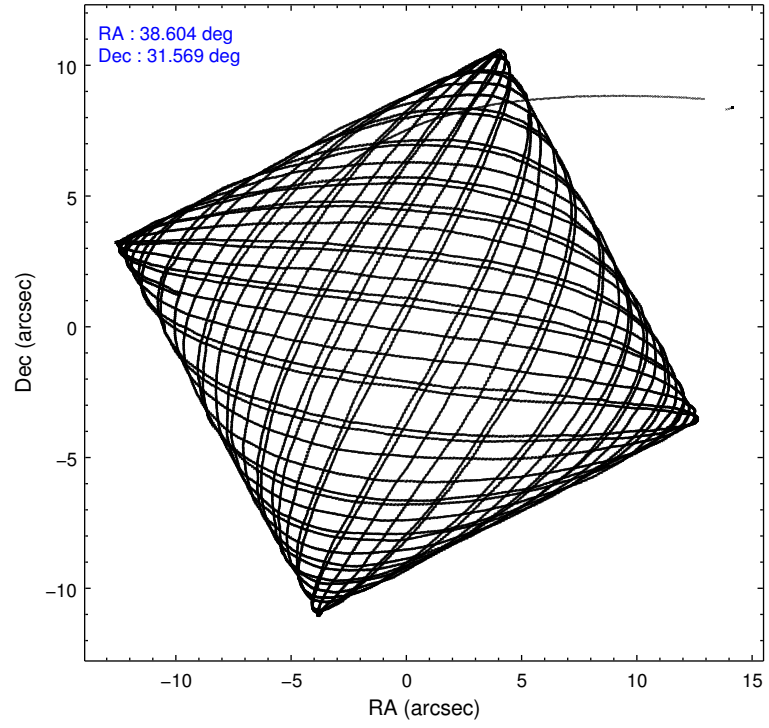
	ccd 3	ccd 6	ccd 7	ccd 8
level 1 events	186034	201431	272149	250464
rejected events	163263	178132	161404	194522
rejected %	87%	88%	59%	77%

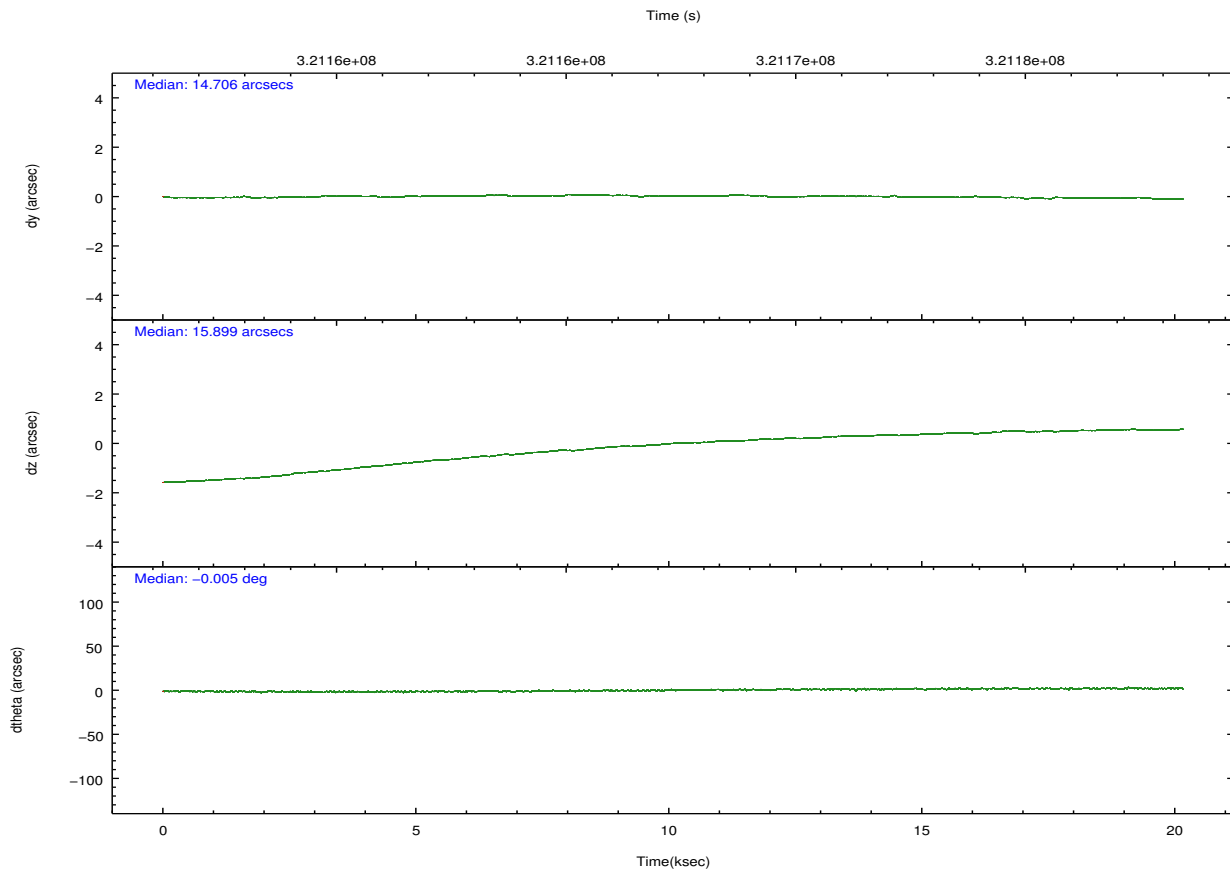
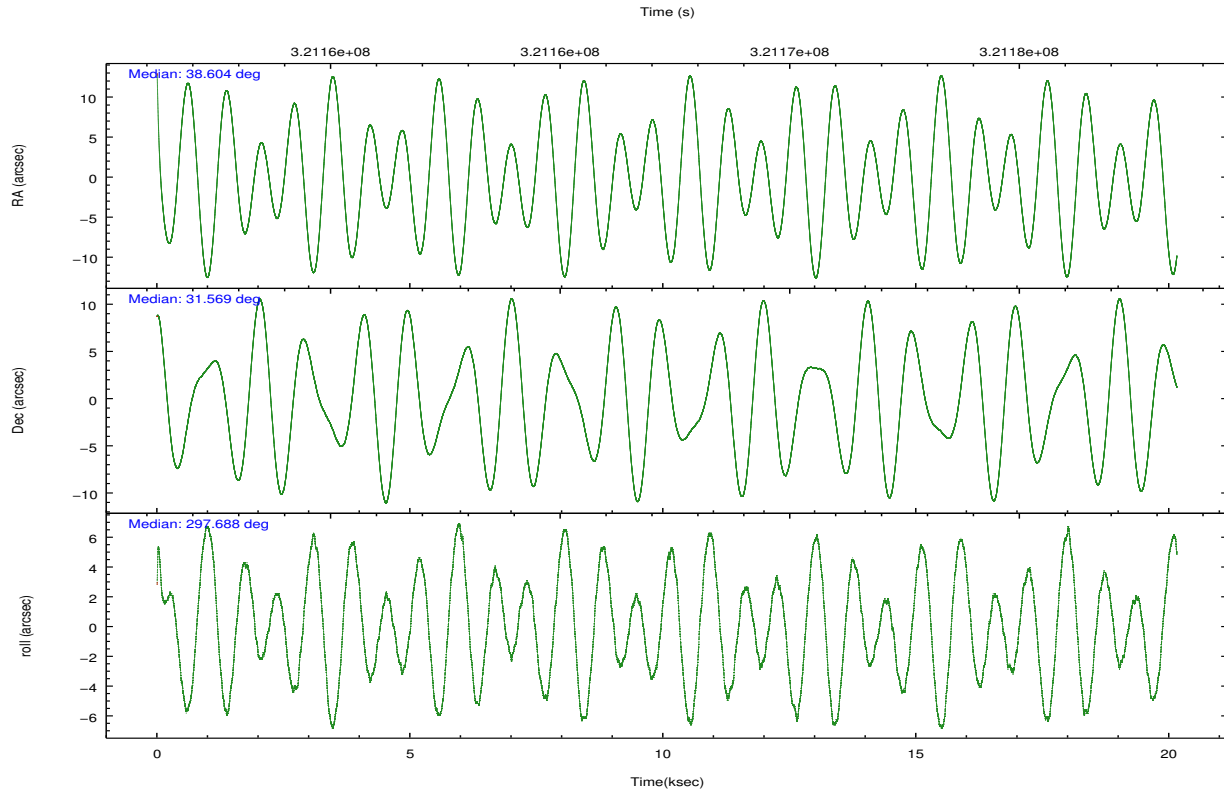
	ccd 3	ccd 6	ccd 7	ccd 8
grade 0 events	10023	9154	9375	17754
	5%	4%	3%	7%
grade 1 events	145	116	301	187
	0%	0%	0%	0%
grade 2 events	4656	5278	23143	13005
	2%	2%	8%	5%
grade 3 events	2212	2235	9389	5719
	1%	1%	3%	2%
grade 4 events	2248	2171	9396	5478
	1%	1%	3%	2%
grade 5 events	9052	9504	25368	12500
	4%	4%	9%	4%
grade 6 events	4086	4879	61470	15009
	2%	2%	22%	5%
grade 7 events	153612	168094	133707	180812
	82%	83%	49%	72%

2.2 Compared Parameters

Parameter	Planned	Actual	Parameter	Planned	Actual
Instrument	ACIS	ACIS	Obspar format version number	7	7
Detector	ACIS-3678	ACIS-3678	Obspar file type	PREDICTED	ACTUAL
Grating	NONE	NONE	Obspar update status	NONE	UPDATED
Data mode	FAINT	FAINT	CCD I0 on	N	N
Observation mode	POINTING	POINTING	CCD I1 on	N	N
[deg] Pointing RA	38.576707	38.60404347236555	CCD I2 on	N	N
[deg] Pointing Dec	31.583551	31.56925785394378	CCD I3 on	O1	Y
[deg] Pointing Roll	297.550777	297.6930876055803	CCD S0 on	N	N
[mm] SIM focus pos	-0.684267	-0.6828225247311905	CCD S1 on	N	N
[mm] SIM defocus	0	0.001444936568705701	CCD S2 on	O3	Y
[mm] SIM translation stage pos	-190.132523	-190.1425803651734	CCD S3 on	Y	Y
[mm] SIM translation stage offset	0	0.01005778216563158	CCD S4 on	O2	Y
[s] Observation start time (MET)	321157409.184000	321156312.72567	CCD S5 on	N	N
Observation start date	2008-03-06T02:22:24	2008-03-06T02:05:12	Number of optional ACIS chips dropped	0	0
[s] Observation end time (MET)	321177409.184000	321178294.36424	On-chip summing requested	N	N
Observation end date	2008-03-06T07:55:44	2008-03-06T08:11:34	Subarray requested	NONE	NONE
Read mode	TIMED	TIMED	Alternating exposures requested	N	N
			[s] Primary exposure time	0.000000	3.1

2.3 Aspect



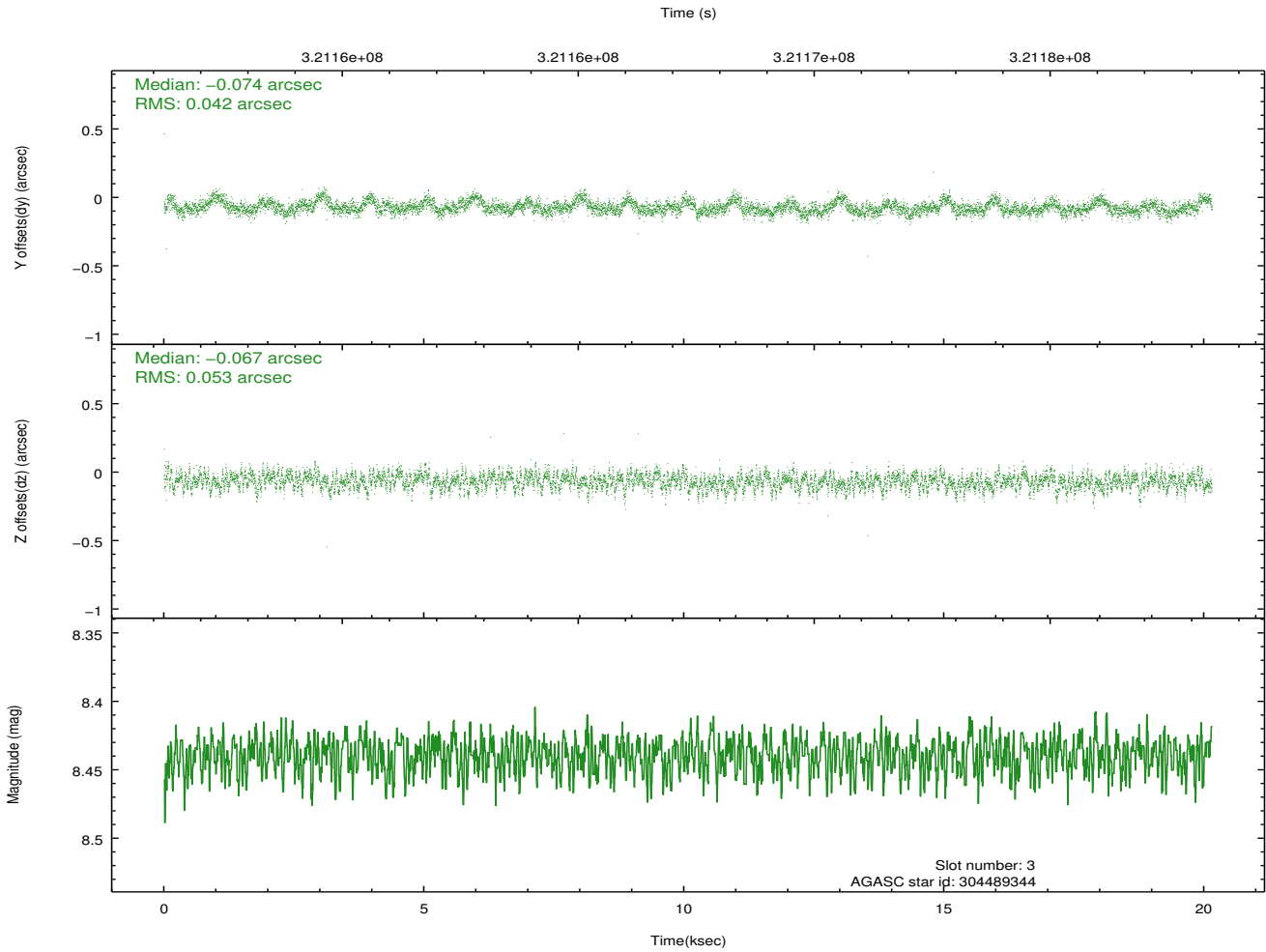
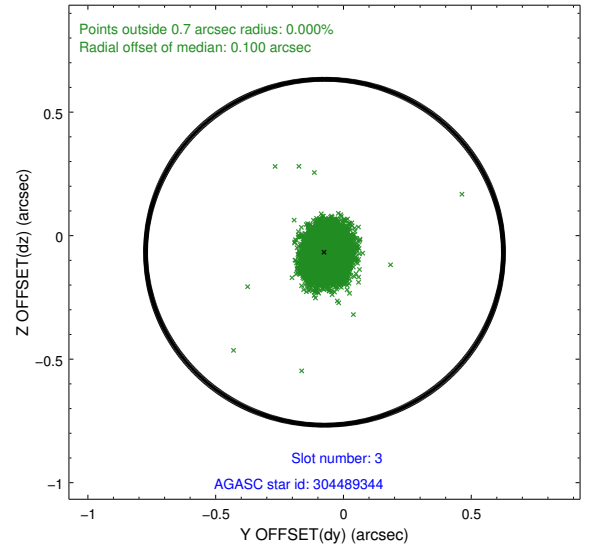
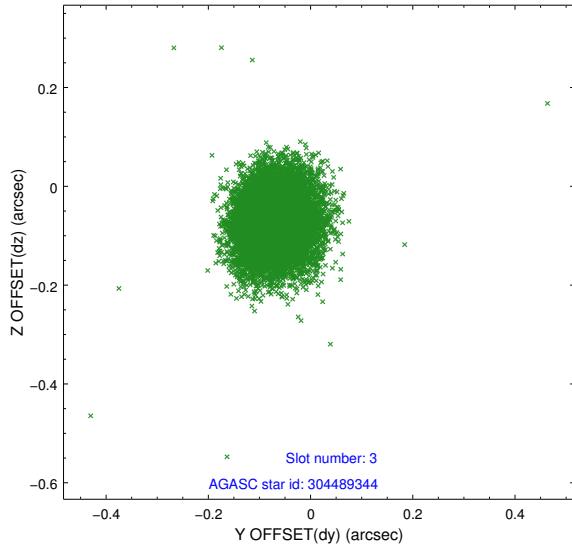


Slot Statistics

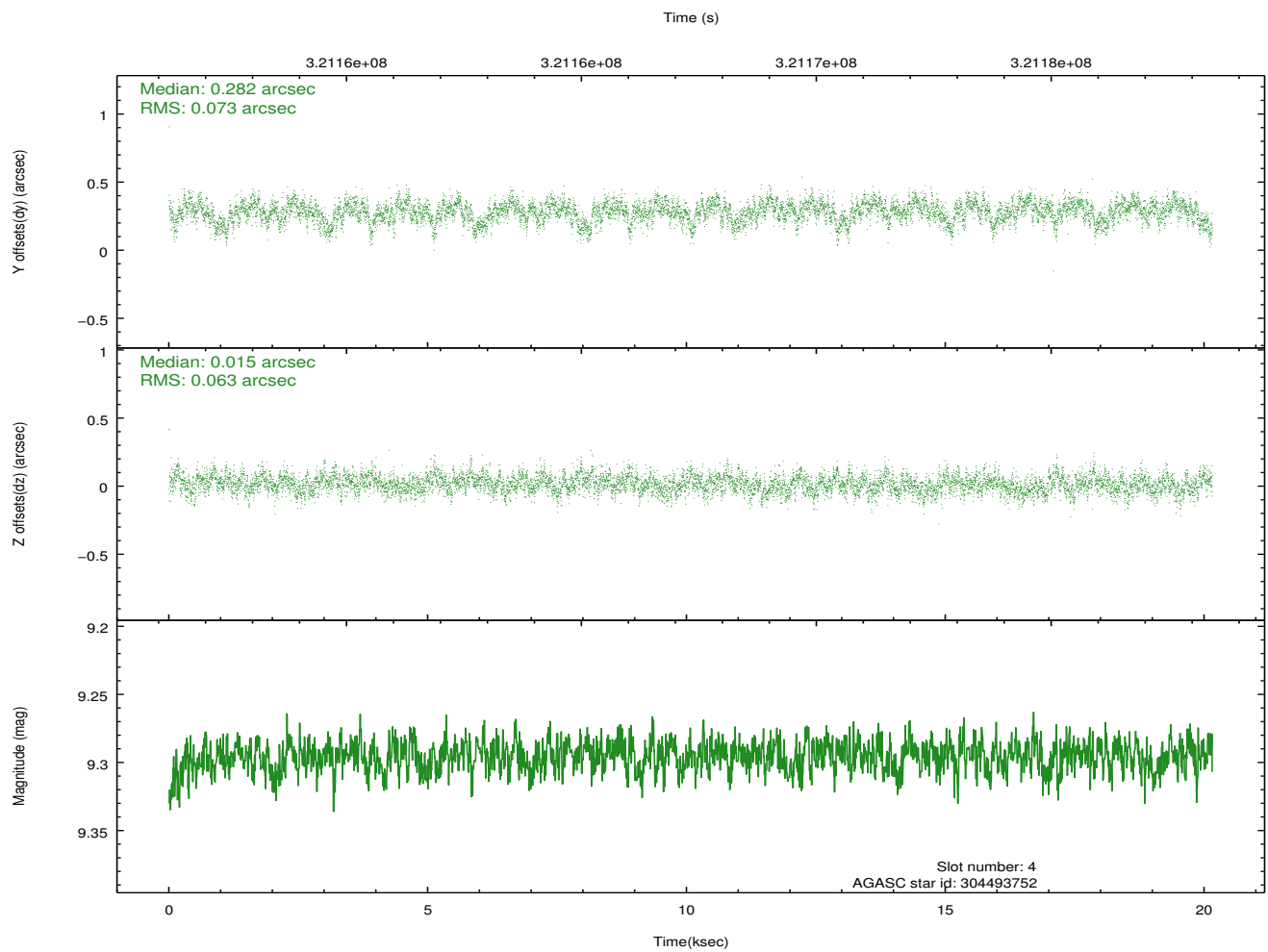
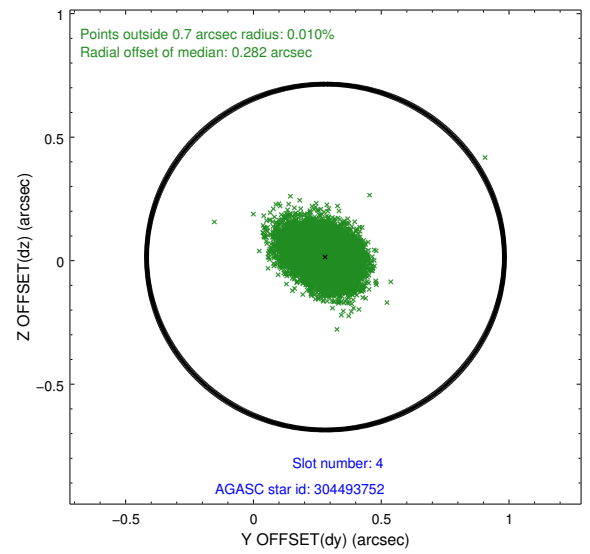
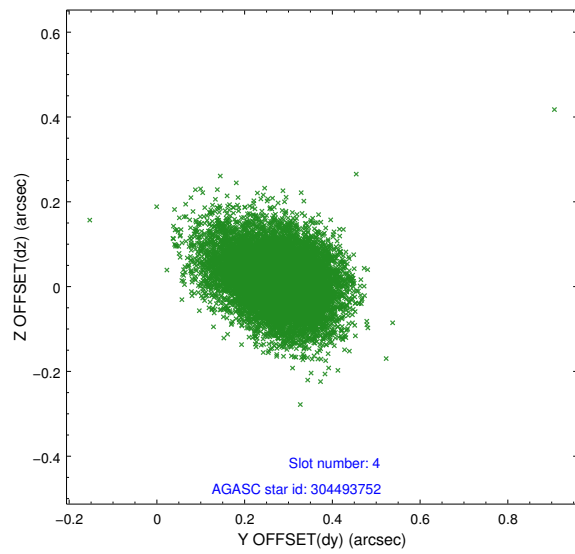
slot	status	id	mag	n_pts	med_dy	med_dz	dr1	dr2	ra	dec	mean_y	mean_z
0	FID	ACIS-S-1	7.18	4916	0.078	-0.091	0.039	0.082	0.000000	0.000000	928.44	-1732.73
1	FID	ACIS-S-5	7.23	4917	-0.153	0.037	0.018	0.024	0.000000	0.000000	-1820.67	164.76
2	FID	ACIS-S-6	7.32	4917	0.054	0.060	0.020	0.066	0.000000	0.000000	393.79	808.93
3	GUIDE	304489344	8.44	9829	-0.074	-0.067	0.070	0.116	37.898459	31.513382	-743.80	-1958.42
4	GUIDE	304493752	9.30	9826	0.282	0.015	0.101	0.168	38.165574	30.873453	1677.61	-2307.47
5	GUIDE	304612384	7.58	9831	0.006	0.032	0.063	0.100	38.497668	31.406381	453.67	-510.20
6	GUIDE	304616336	8.11	9833	0.090	-0.078	0.059	0.099	38.977780	31.139894	1986.80	358.15
7	GUIDE	305008880	7.51	9832	-0.304	0.099	0.059	0.094	38.064489	32.098667	-2369.61	-525.39

2.4 Star Slots

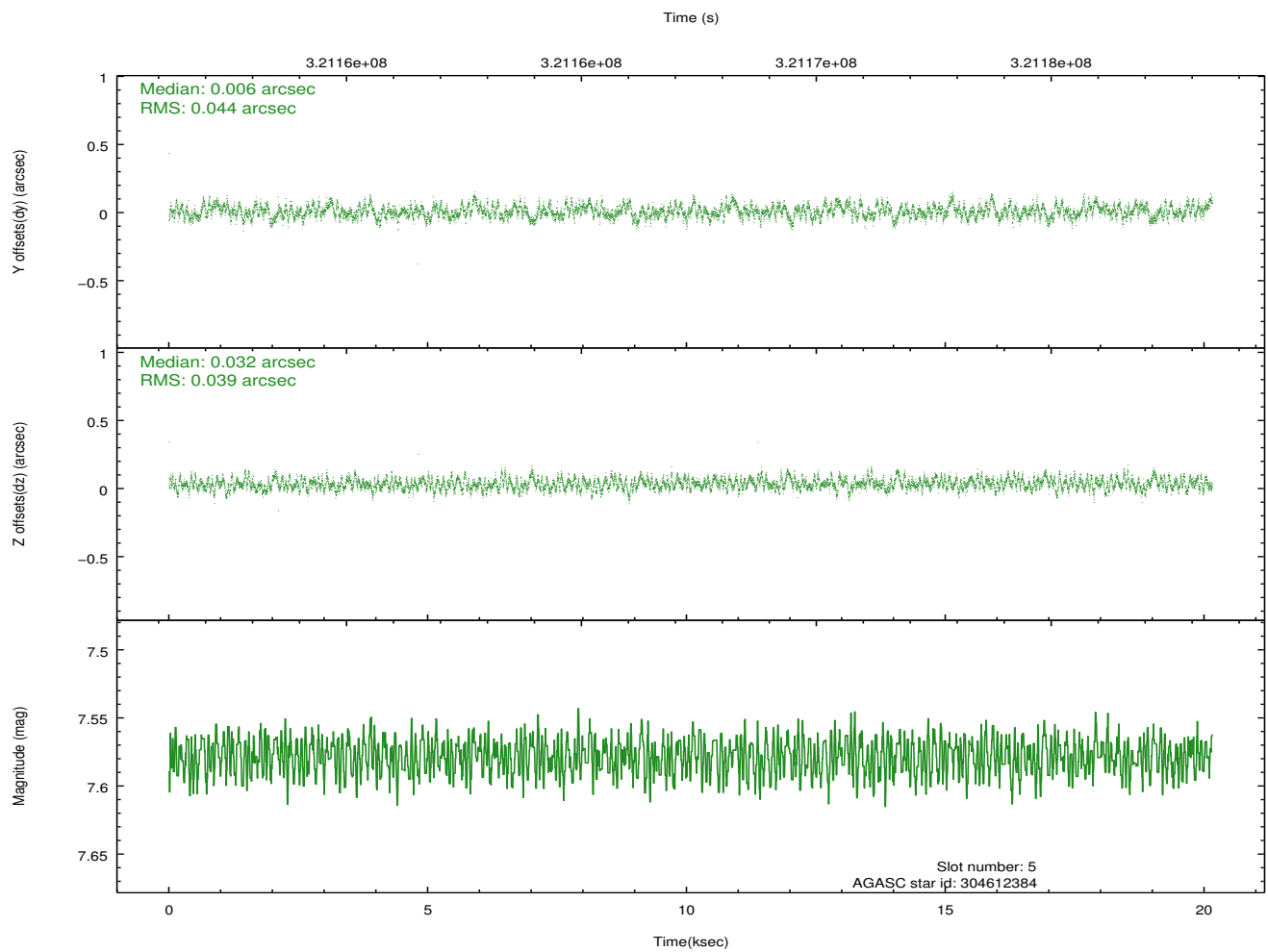
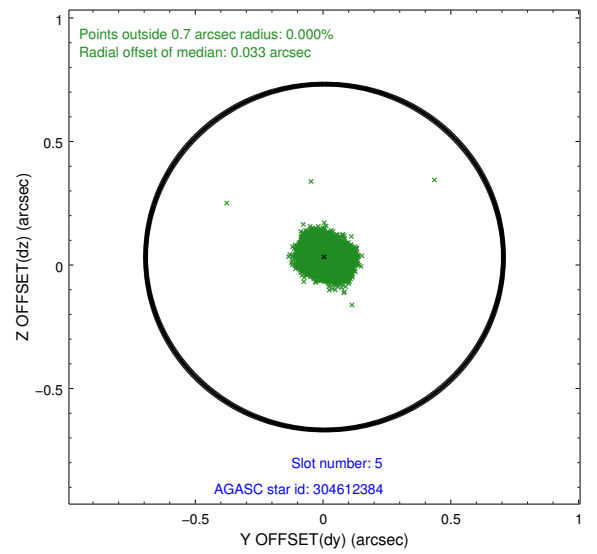
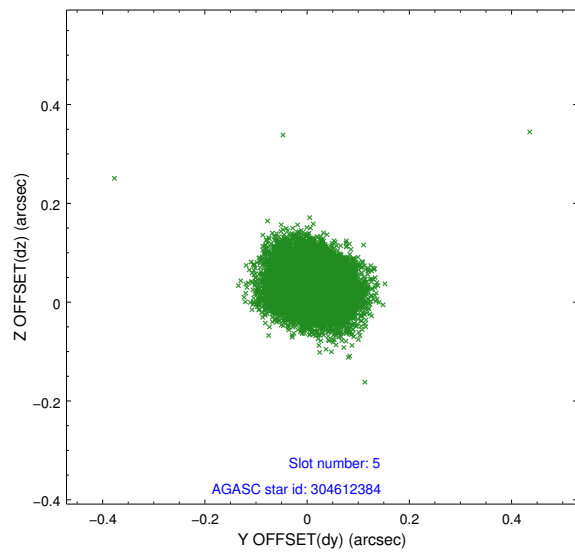
2.4.1 Slot 3



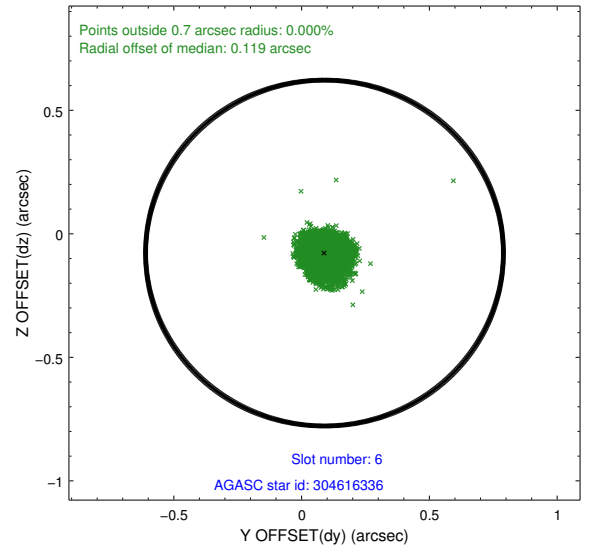
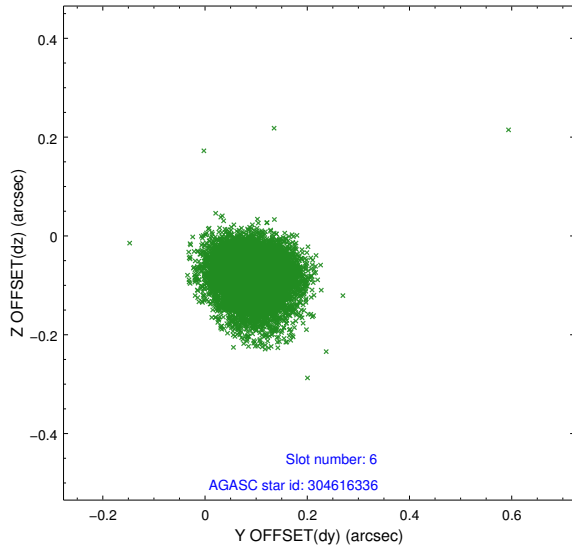
2.4.2 Slot 4



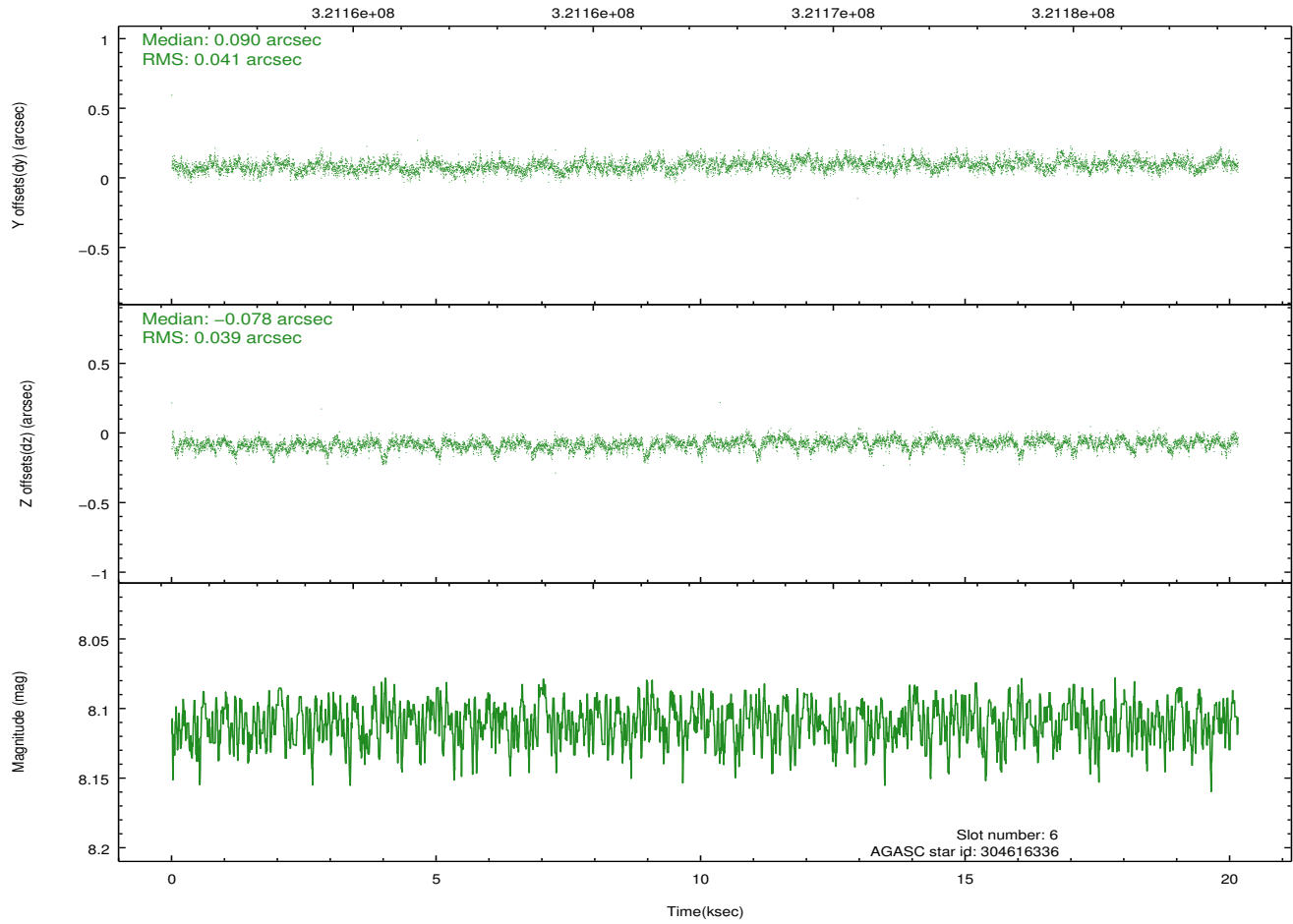
2.4.3 Slot 5



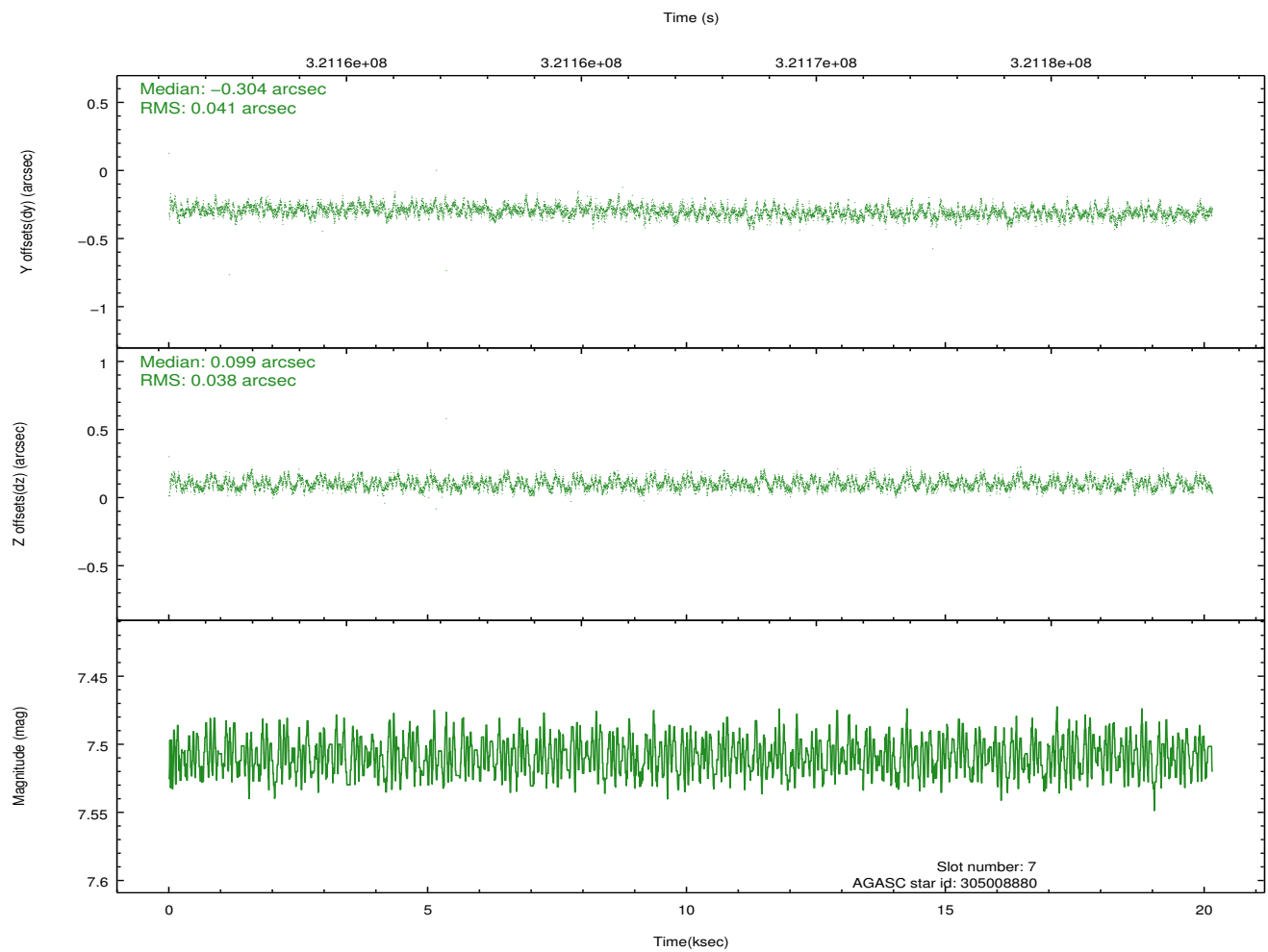
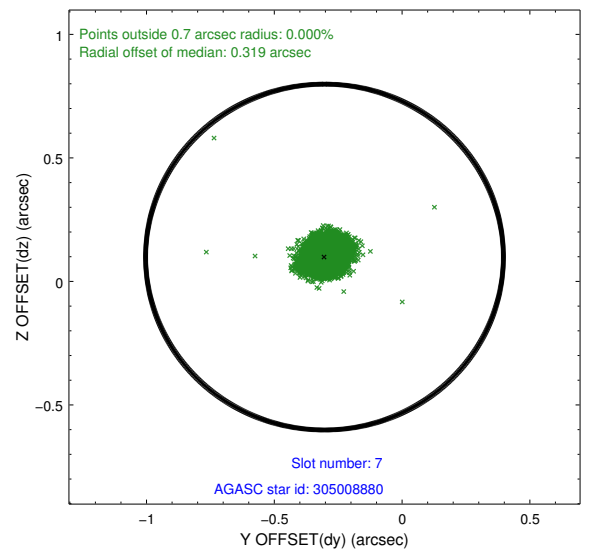
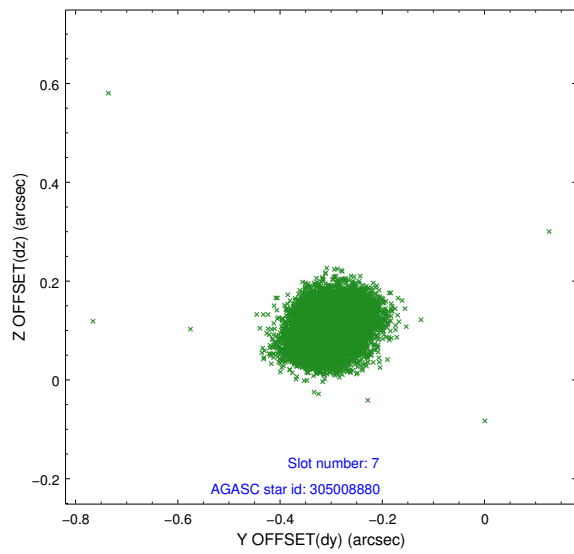
2.4.4 Slot 6



Time (s)

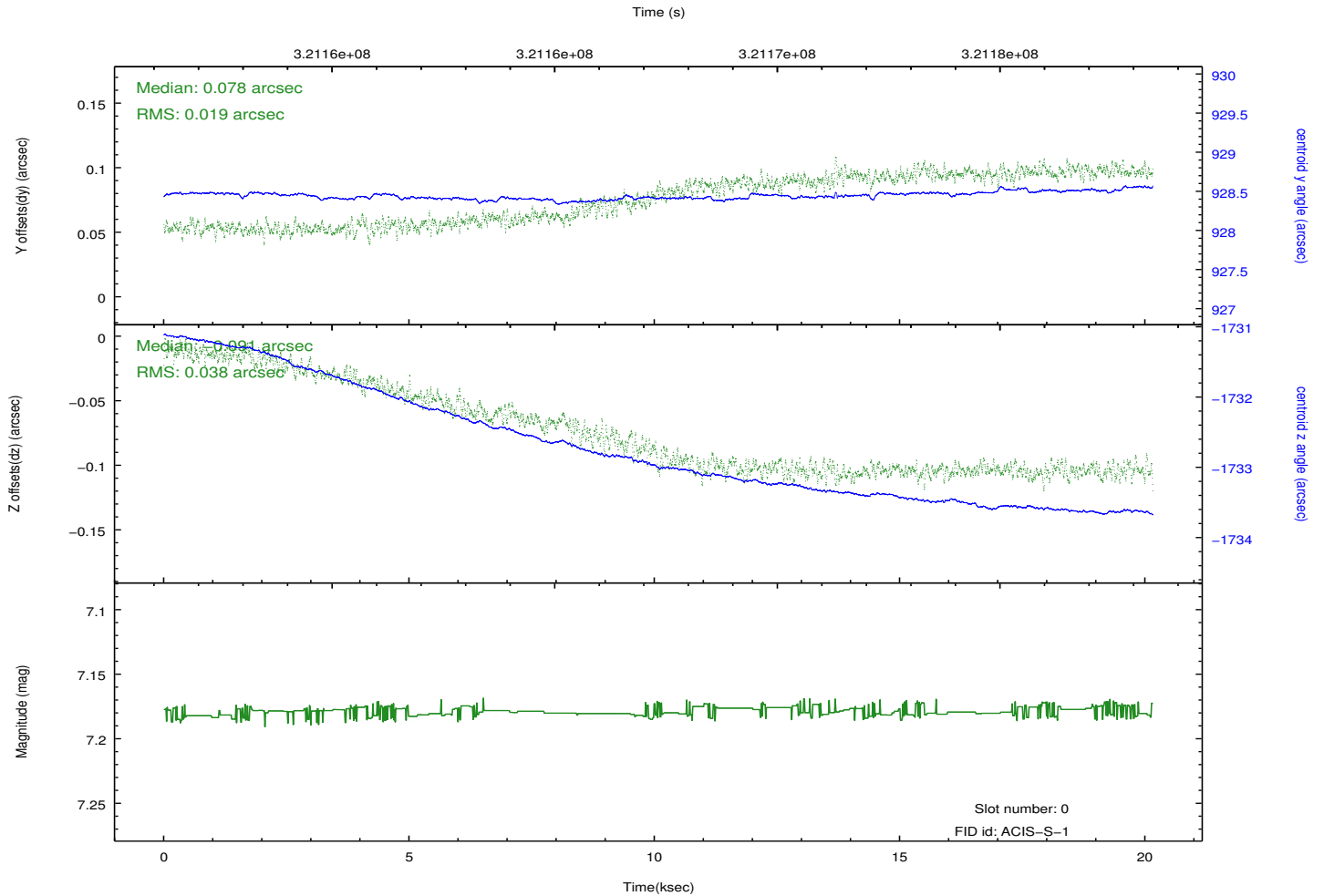
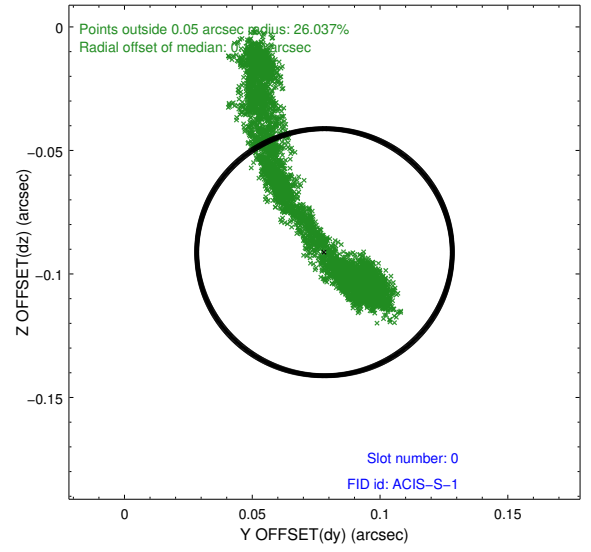
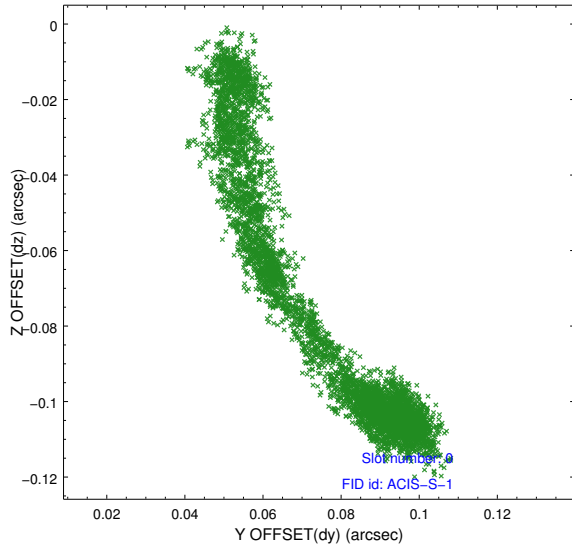


2.4.5 Slot 7

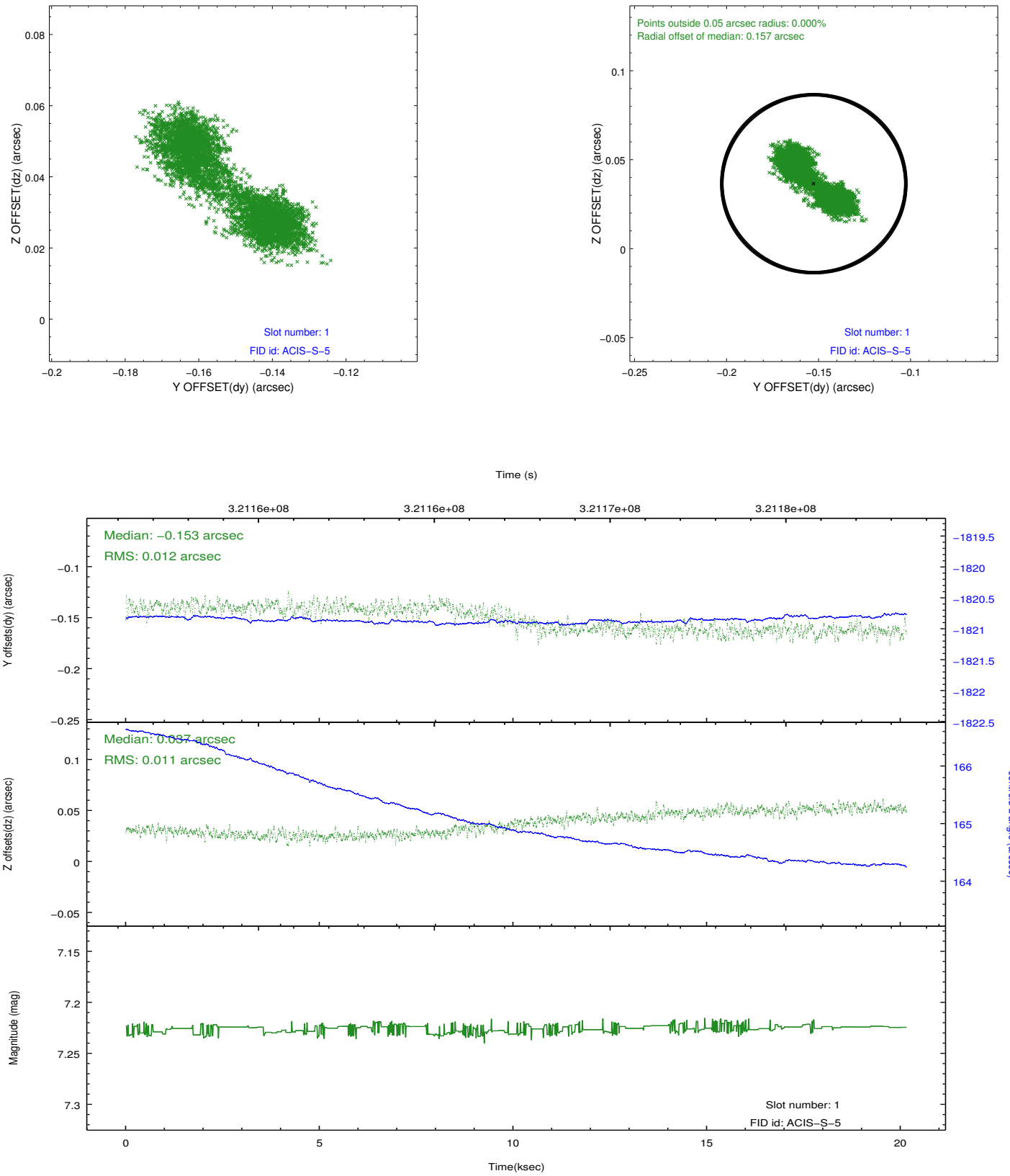


2.5 FID Slots

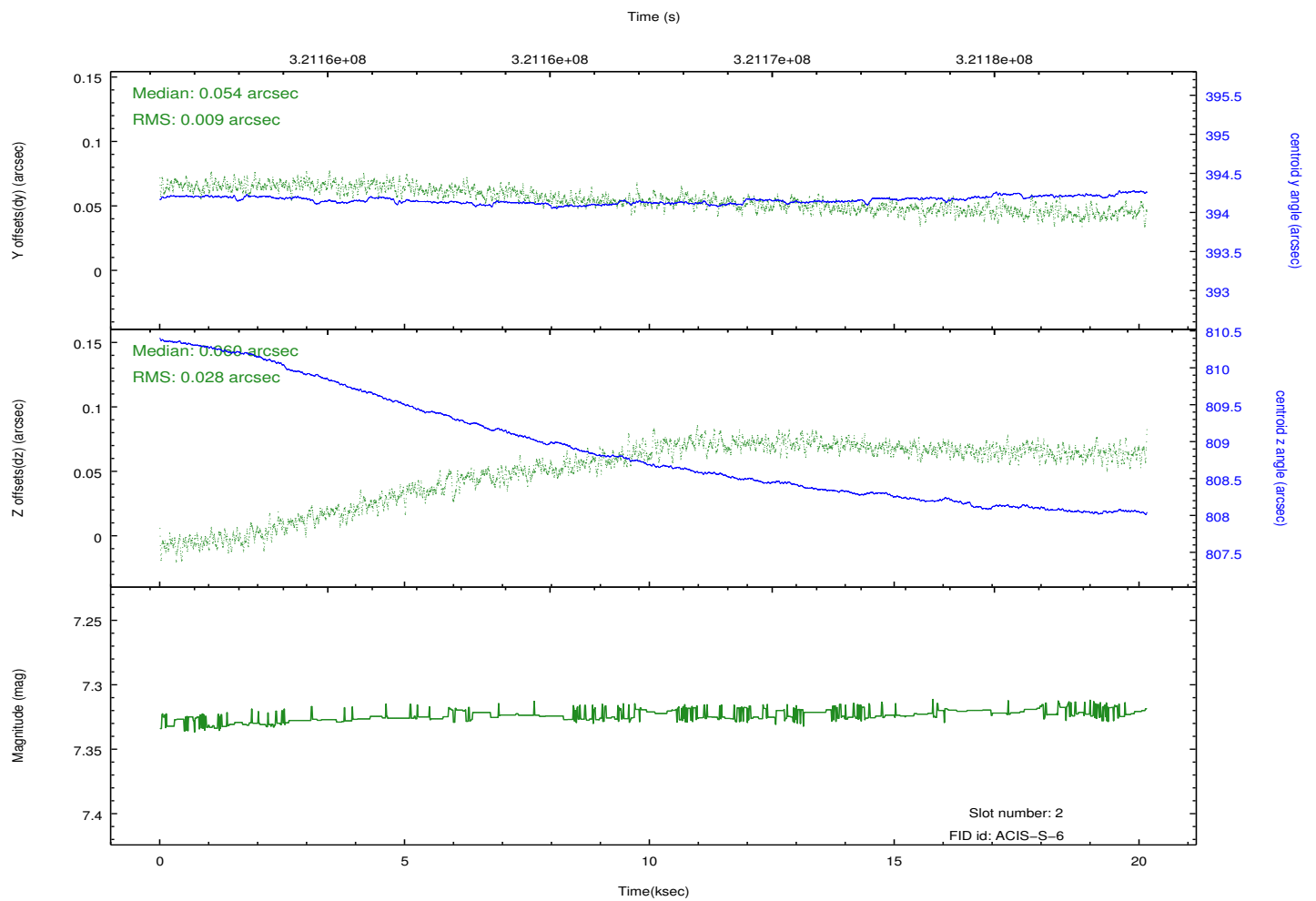
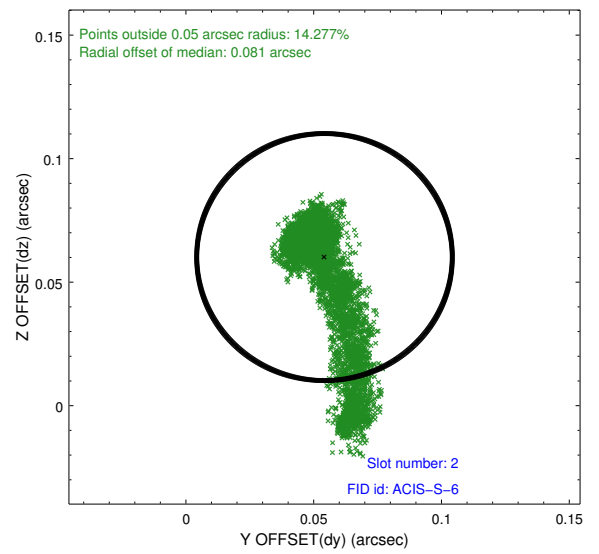
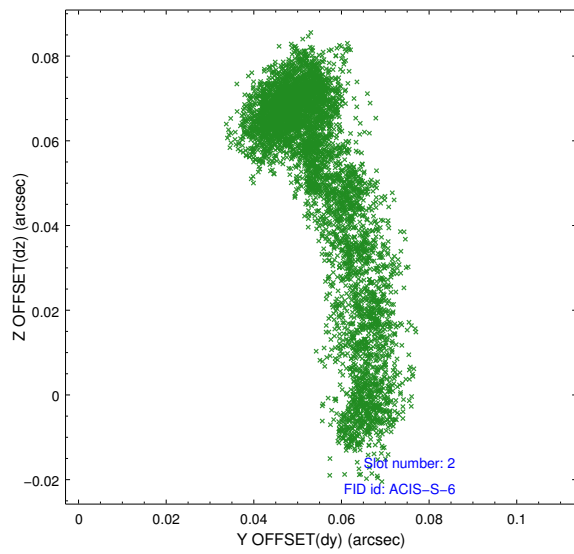
2.5.1 Slot 0



2.5.2 Slot 1



2.5.3 Slot 2



A Summary

A.1 Status

V&V Scientist	Beth Sundheim
V&V Date (YYYY-MM-DD)	2012.05.14
V&V Edition	1
V&V Disposition and Status	OK
V&V Charge Time	20.1469001

A.2 Comments