

# V&V Reference Report

## L2 ASCDS Version : 8.4.4

Observation 9275 - L2 Version 2  
Chandra X-Ray Center

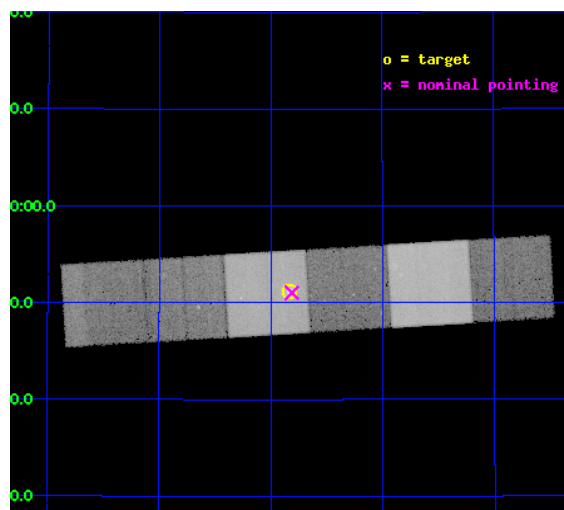
L2 Processing Date : May 13 2012

## Contents

<b>1</b>	<b>Front</b>	<b>2</b>
<b>2</b>	<b>OBI</b>	<b>3</b>
2.1	OBI . . . . .	3
2.1.1	Images . . . . .	3
2.1.2	Bias . . . . .	3
2.1.3	Parameters . . . . .	4
2.1.4	Events . . . . .	4
2.2	Compared Parameters . . . . .	5
2.3	Aspect . . . . .	6
2.4	Star Slots . . . . .	9
2.4.1	Slot 3 . . . . .	9
2.4.2	Slot 4 . . . . .	10
2.4.3	Slot 5 . . . . .	11
2.4.4	Slot 6 . . . . .	12
2.4.5	Slot 7 . . . . .	13
2.5	FID Slots . . . . .	14
2.5.1	Slot 0 . . . . .	14
2.5.2	Slot 1 . . . . .	15
2.5.3	Slot 2 . . . . .	16
<b>A</b>	<b>Summary</b>	<b>17</b>
A.1	Status . . . . .	17
A.2	Comments . . . . .	17

# 1 Front

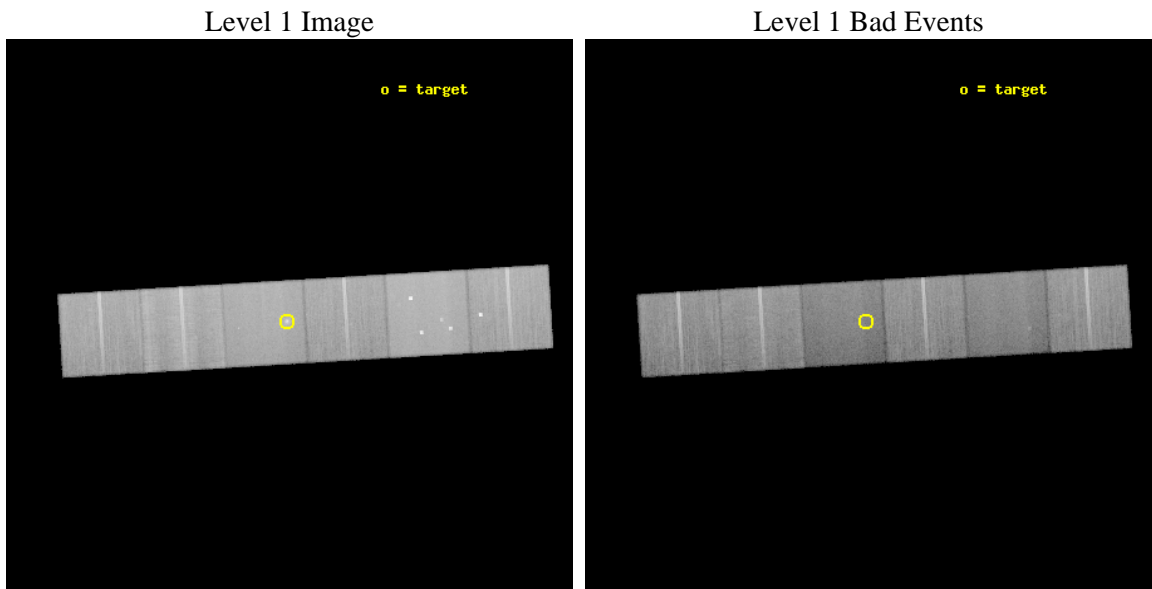
seq_num	701716	Sequence number
obs_id	9275	Observation id
title	THE NATURE OF ENERGY TRANSPORT AND PARTICLE ACCELERATION IN THE TRANSITIONAL FRI/FRII RADIO GALAXY 3C 288	Proposal title
observer	Dr Daniel Evans	Principal investigator
object	3C 288	Source name
dtcycle	0	&#160
cycle	P	events from which exps? Prim/Second/Both
ra_targ	204.708333	Observer's specified target RA [deg]
dec_targ	38.852722	Observer's specified target Dec [deg]
ra_nom	204.70284080984	Nominal RA [deg]
dec_nom	38.850420376004	Nominal Dec [deg]
roll_nom	176.55652048202	Nominal Roll [deg]
revision	2	Processing version of data
ontime	40150.399850488	Sum of GTIs [s]
lifetime	39641.991311913	Lifetime [s]
ontime4	40150.399850488	Sum of GTIs [s]
ontime5	40150.399850488	Sum of GTIs [s]
ontime6	40150.399850488	Sum of GTIs [s]
ontime7	40150.399850488	Sum of GTIs [s]
ontime8	40143.917819977	Sum of GTIs [s]
ontime9	40147.15884012	Sum of GTIs [s]
l2events	493773	Number of level 2 events



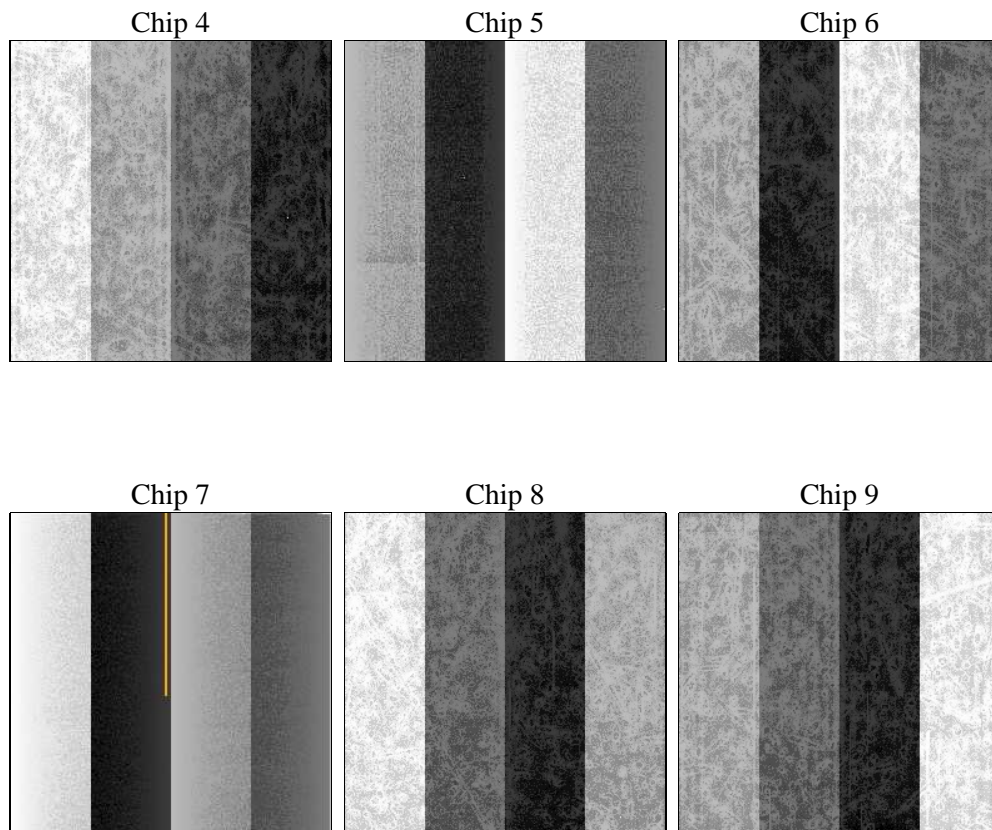
## 2 OBI

### 2.1 OBI

#### 2.1.1 Images



#### 2.1.2 Bias



### 2.1.3 Parameters

obi_num	0	Obi number	sched_exp_time	40000.000000	[s] Scheduled observation exposure time
ascdsver	8.4.4	Processing system revision	ontime	40150.399850488	Sum of GTIs [s]
caldbver	4.4.9	&#160	ontime4	40150.399850488	Sum of GTIs [s]
date	2012-05-13T01:09:32	Date and time of file creation	ontime5	40150.399850488	Sum of GTIs [s]
revision	2	Processing version of data	ontime6	40150.399850488	Sum of GTIs [s]
			ontime7	40150.399850488	Sum of GTIs [s]
			ontime8	40143.917819977	Sum of GTIs [s]
			ontime9	40147.15884012	Sum of GTIs [s]
			l1events	2232882	Number of level 1 events

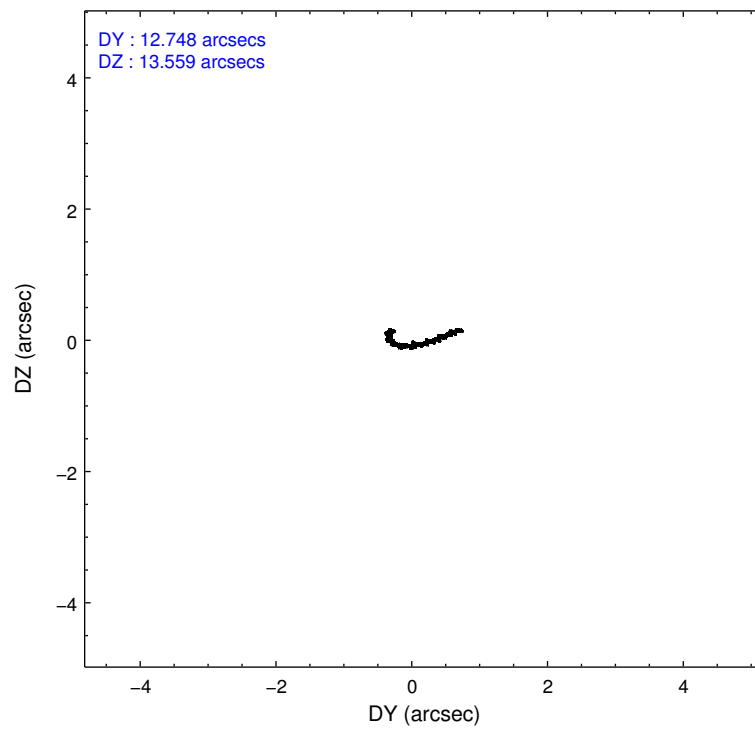
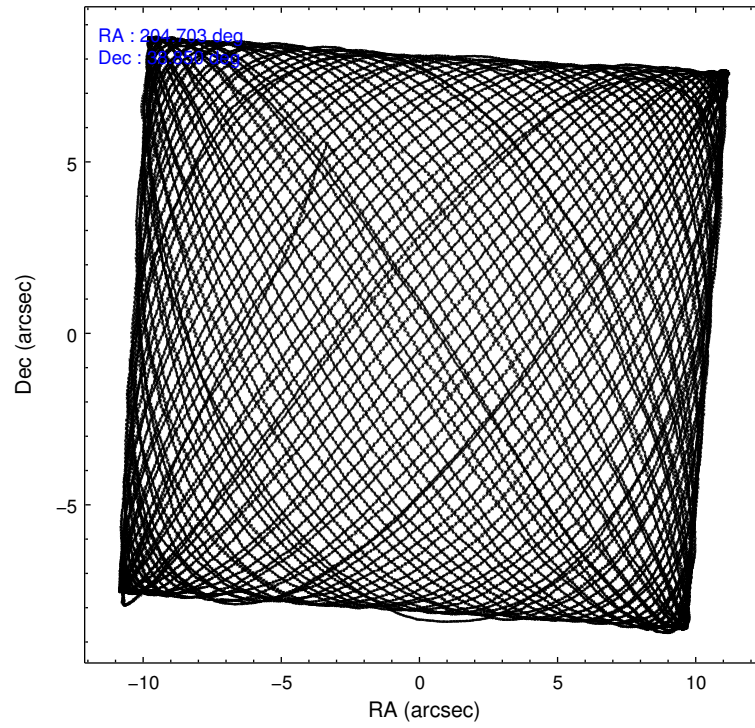
### 2.1.4 Events

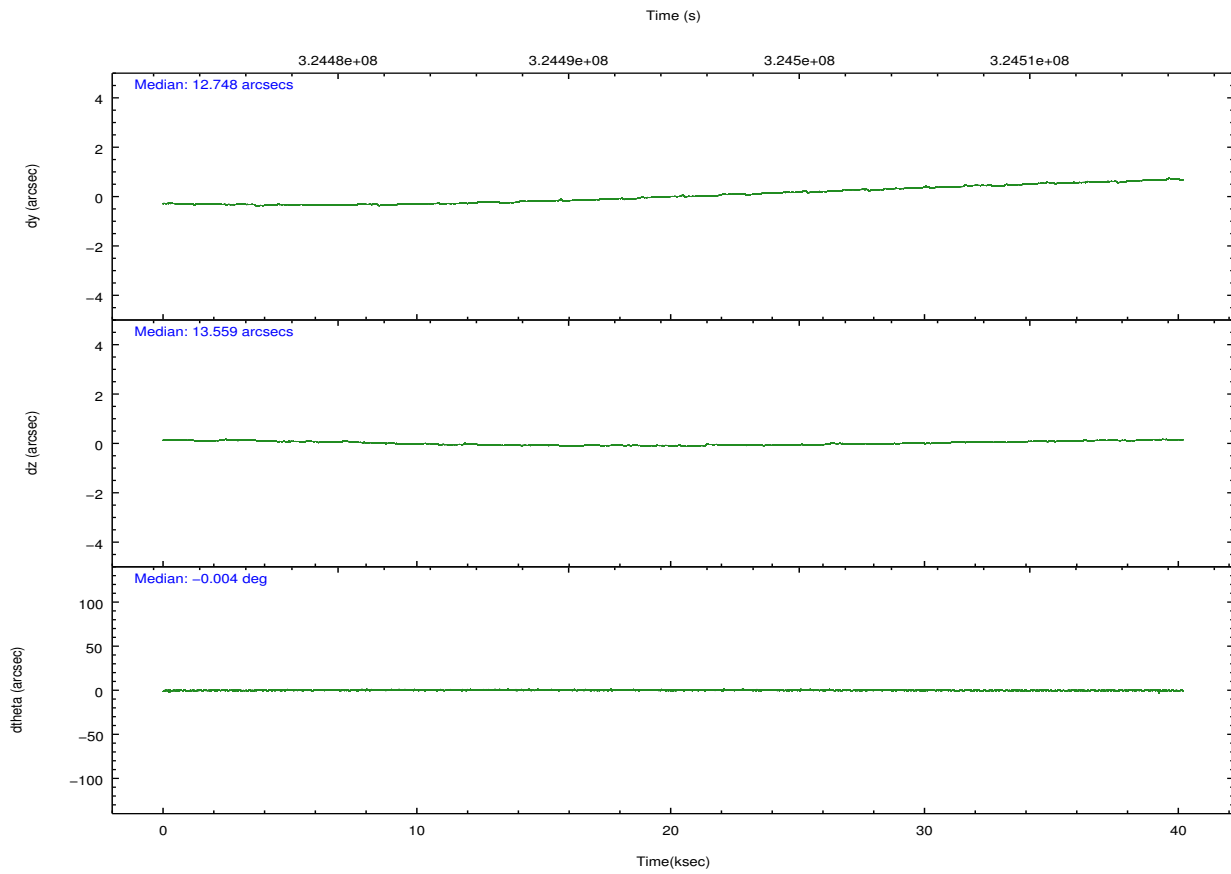
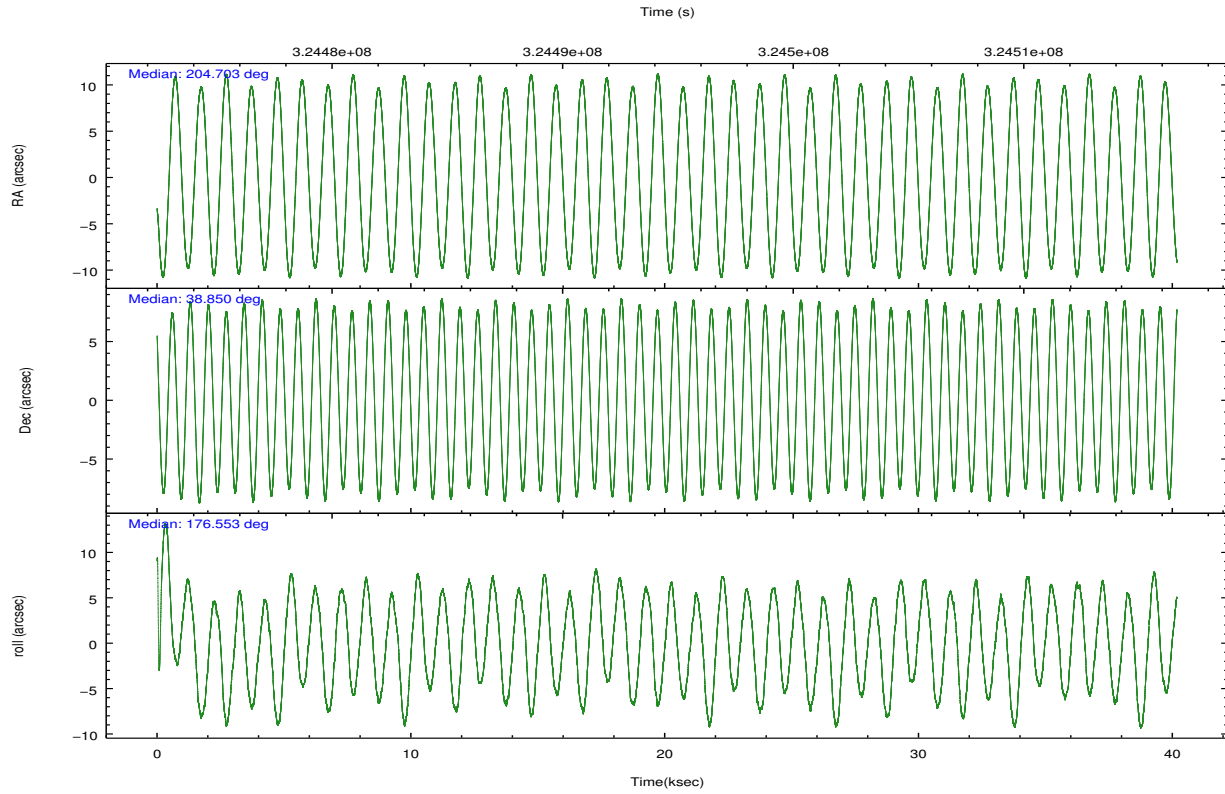
	ccd 4	ccd 5	ccd 6	ccd 7	ccd 8	ccd 9		ccd 4	ccd 5	ccd 6	ccd 7	ccd 8	ccd 9
level 1 events	371263	451571	320200	366686	401143	322019	grade 0 events	19643	30812	11609	18219	28716	13311
rejected events	329993	221530	287186	194532	304293	286515		5%	6%	3%	4%	7%	4%
rejected %	88%	49%	89%	53%	75%	88%	grade 1 events	363	760	146	455	308	214
								0%	0%	0%	0%	0%	0%
							grade 2 events	8398	66744	7367	35379	22454	7554
								2%	14%	2%	9%	5%	2%
							grade 3 events	3773	9204	3577	15616	10162	3817
								1%	2%	1%	4%	2%	1%
							grade 4 events	3561	8884	3510	15903	9531	3656
								0%	1%	1%	4%	2%	1%
							grade 5 events	12669	34916	13126	37872	19071	14464
								3%	7%	4%	10%	4%	4%
							grade 6 events	5901	114471	6962	87072	25994	7174
								1%	25%	2%	23%	6%	2%
							grade 7 events	316955	185780	273903	156170	284907	271829
								85%	41%	85%	42%	71%	84%

## 2.2 Compared Parameters

Parameter	Planned	Actual	Parameter	Planned	Actual
Instrument	ACIS	ACIS	Obspar format version number	7	7
Detector	ACIS-456789	ACIS-456789	Obspar file type	PREDICTED	ACTUAL
Grating	NONE	NONE	Obspar update status	NONE	UPDATED
Data mode	VFAINT	VFAINT	CCD I0 on	N	N
Observation mode	POINTING	POINTING	CCD I1 on	N	N
[deg] Pointing RA	204.734034	204.7028408098433	CCD I2 on	N	N
[deg] Pointing Dec	38.862982	38.85042037600366	CCD I3 on	N	N
[deg] Pointing Roll	176.380325	176.556520482019	CCD S0 on	O1	Y
[mm] SIM focus pos	-0.684267	-0.6828225247311905	CCD S1 on	Y	Y
[mm] SIM defocus	0	0.001444936568705701	CCD S2 on	Y	Y
[mm] SIM translation stage pos	-190.132523	-190.1400660498719	CCD S3 on	Y	Y
[mm] SIM translation stage offset	0	0.00754346686406393	CCD S4 on	Y	Y
[s] Observation start time (MET)	324474613.184000	324473552.16205	CCD S5 on	O2	Y
Observation start date	2008-04-13T11:49:08	2008-04-13T11:32:32	Number of optional ACIS chips dropped	0	0
[s] Observation end time (MET)	324514613.184000	324515644.8141	On-chip summing requested	N	N
Observation end date	2008-04-13T22:55:48	2008-04-13T23:14:04	Subarray requested	NONE	NONE
Read mode	TIMED	TIMED	Alternating exposures requested	N	N
			[s] Primary exposure time	0.000000	3.2

## 2.3 Aspect



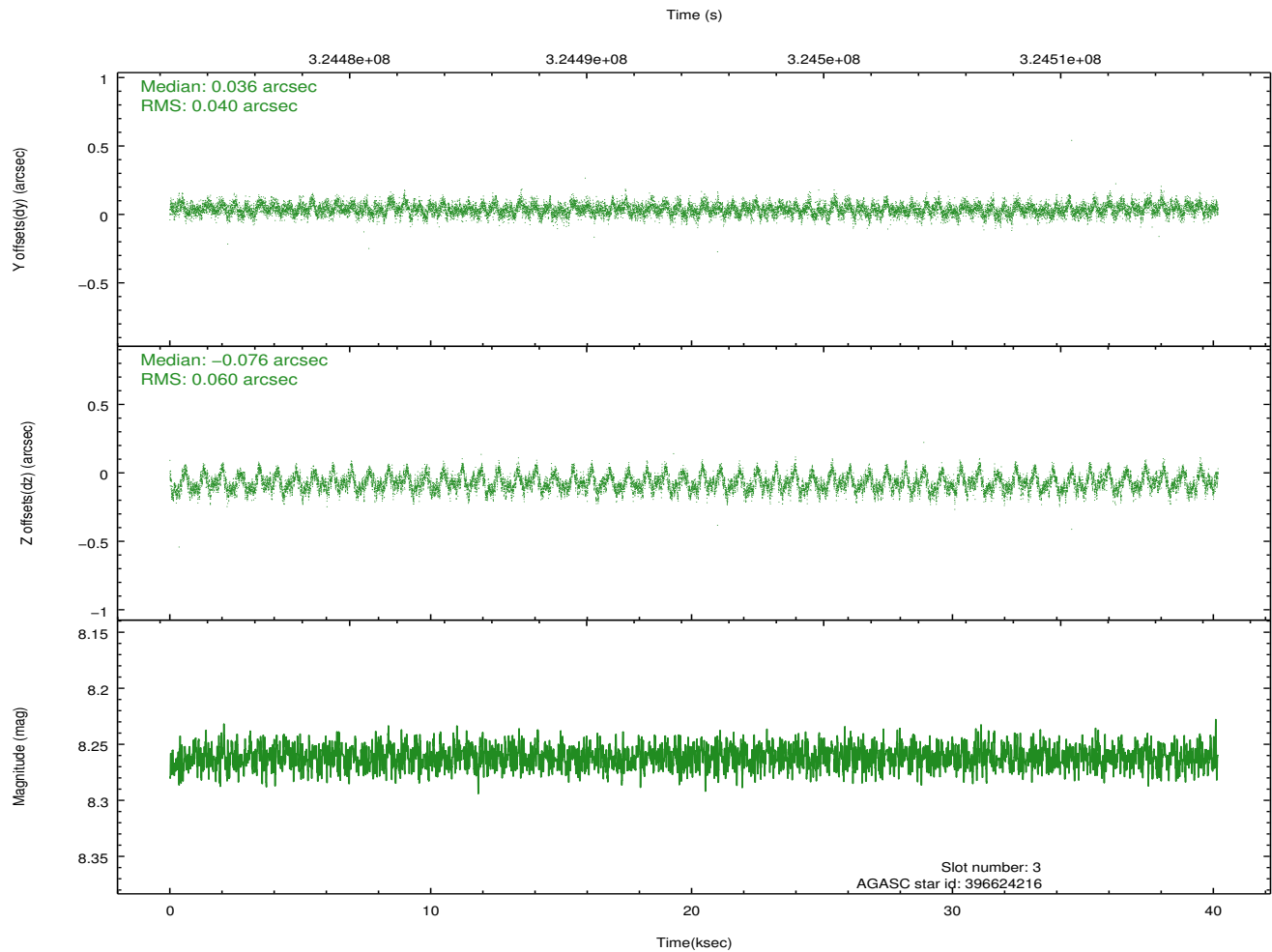
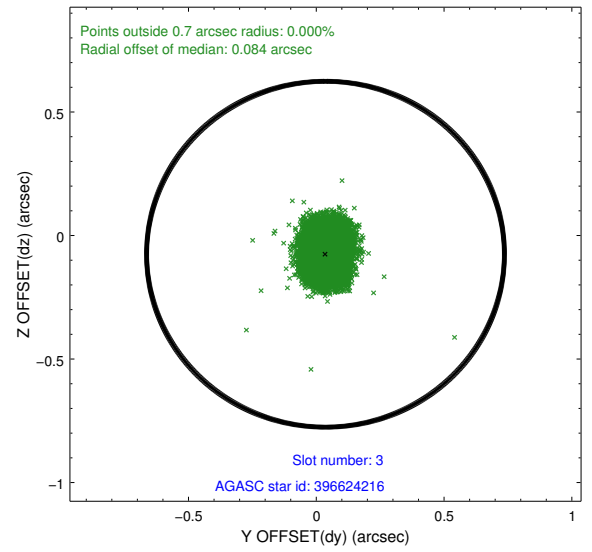
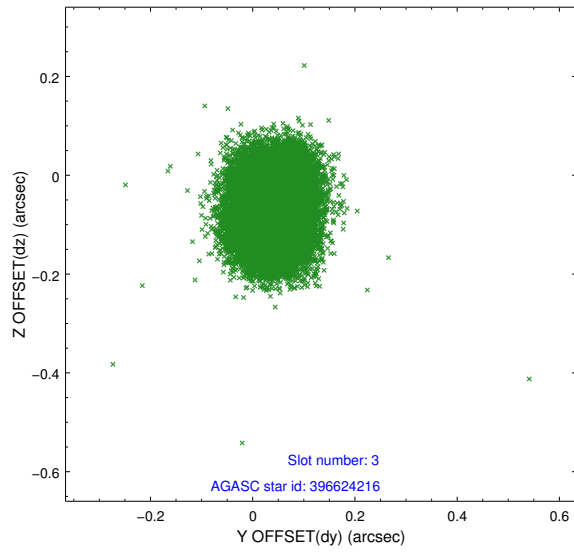


### Slot Statistics

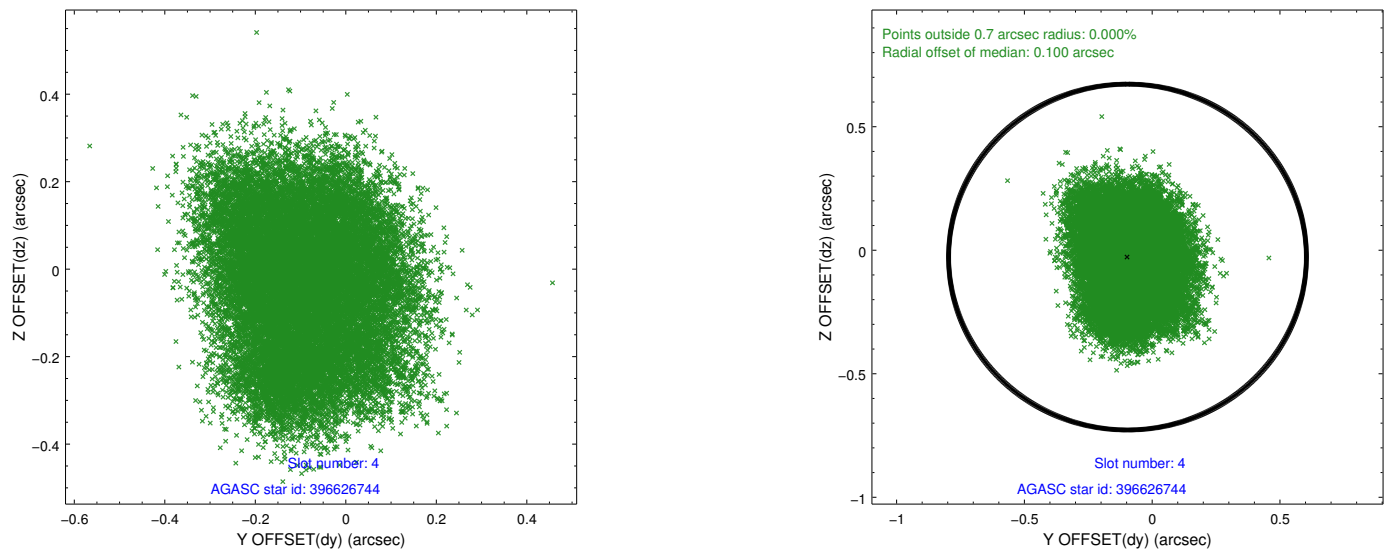
slot	status	id	mag	n_pts	med_dy	med_dz	dr1	dr2	ra	dec	mean_y	mean_z
0	FID	ACIS-S-2	6.88	9800	-0.023	-0.014	0.008	0.013	0.000000	0.000000	-765.74	-1734.93
1	FID	ACIS-S-4	6.97	9800	0.105	0.015	0.008	0.017	0.000000	0.000000	2147.66	173.57
2	FID	ACIS-S-5	7.00	9800	-0.113	0.008	0.008	0.015	0.000000	0.000000	-1818.65	167.25
3	GUIDE	396624216	8.26	19597	0.036	-0.076	0.076	0.124	205.566170	38.948325	-2304.77	-464.30
4	GUIDE	396626744	9.92	19574	-0.097	-0.028	0.207	0.309	204.894444	38.501601	-533.93	1270.29
5	GUIDE	396629640	9.42	19574	0.096	0.094	0.086	0.138	205.355740	38.872927	-1736.07	-151.37
6	GUIDE	396627896	9.09	19580	0.052	-0.007	0.089	0.148	204.488410	39.175043	757.16	-1077.25
7	GUIDE	396629184	9.56	19571	-0.095	0.013	0.133	0.209	204.749436	39.523706	109.14	-2376.90

## 2.4 Star Slots

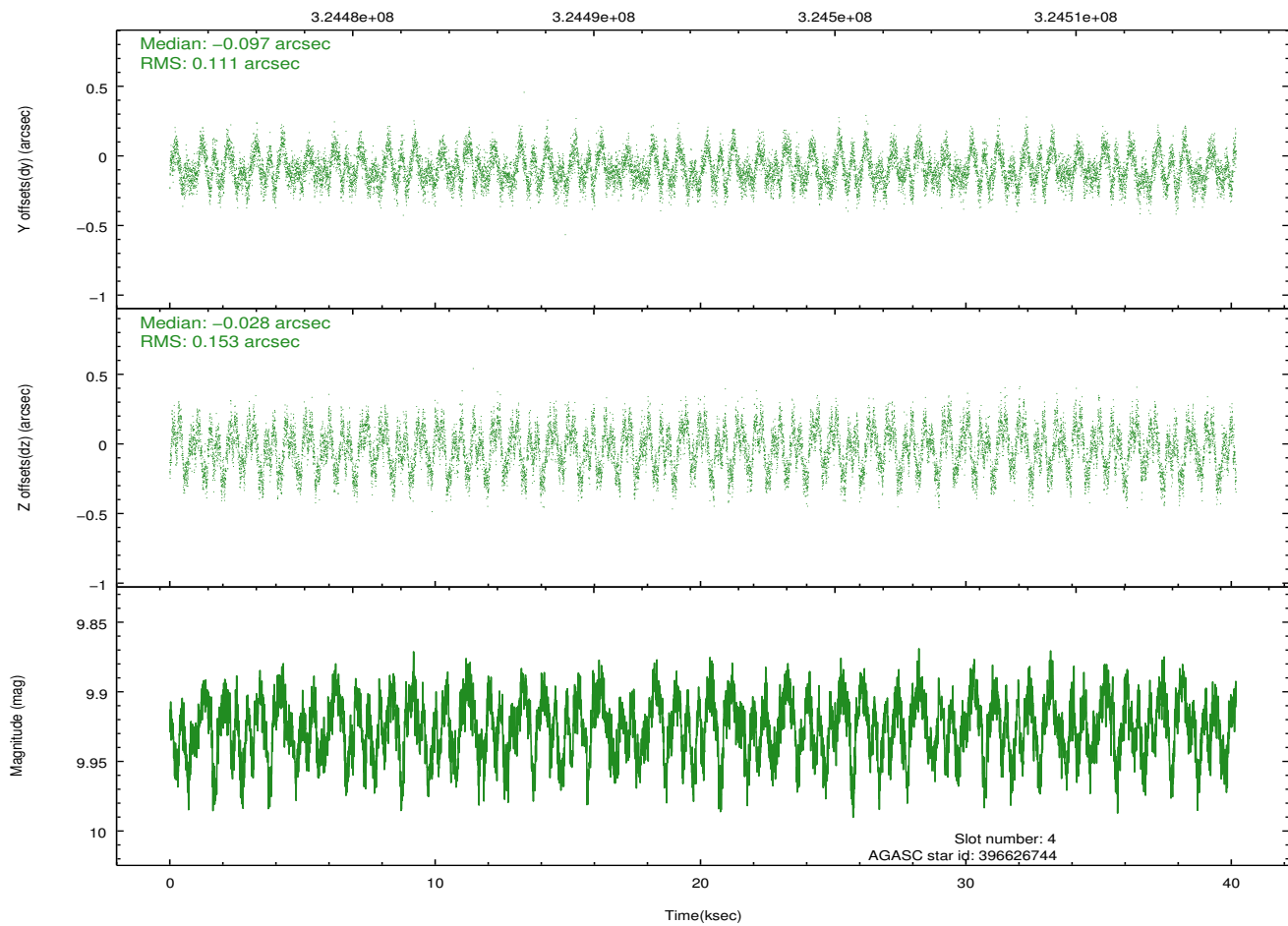
### 2.4.1 Slot 3



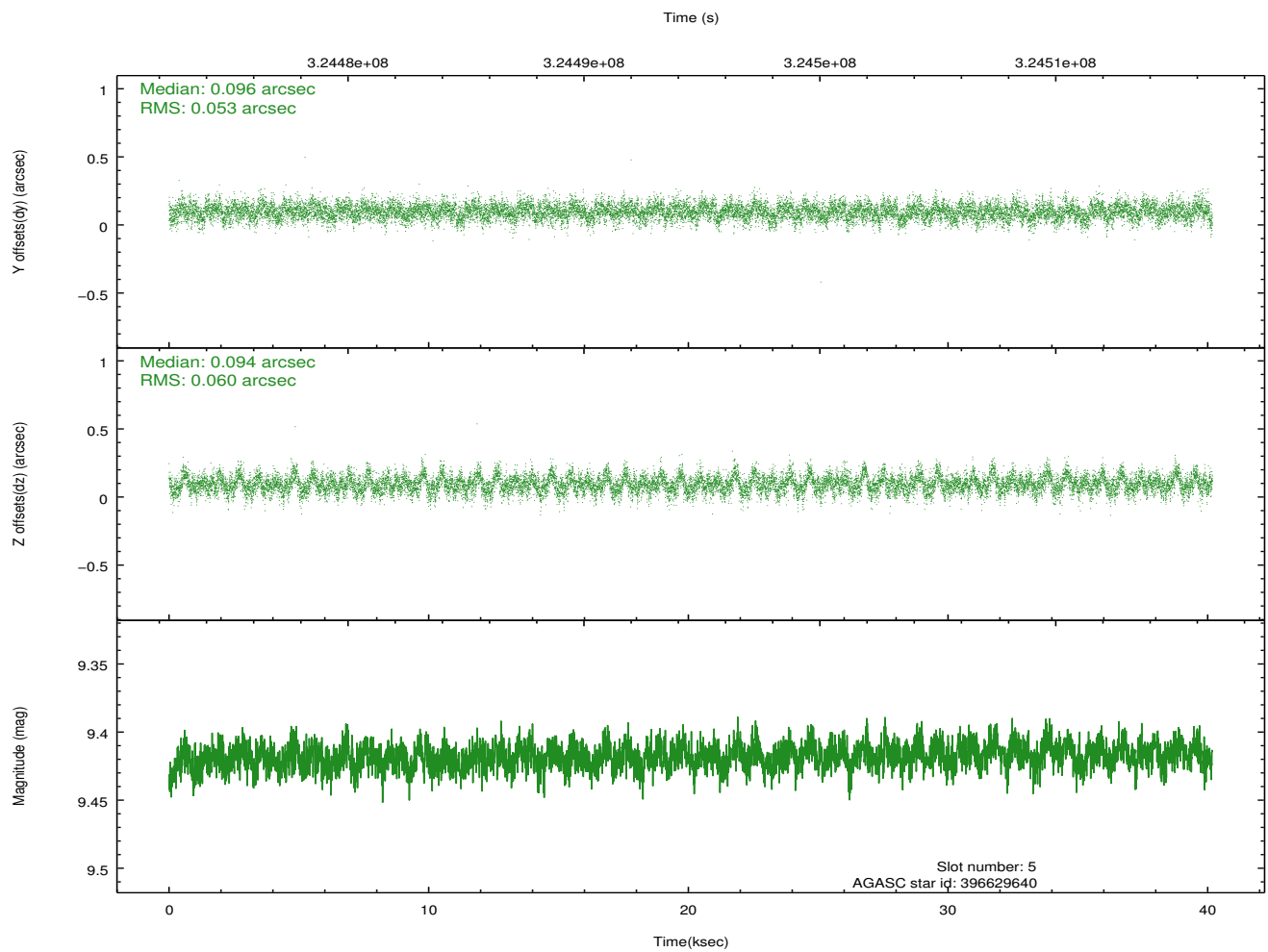
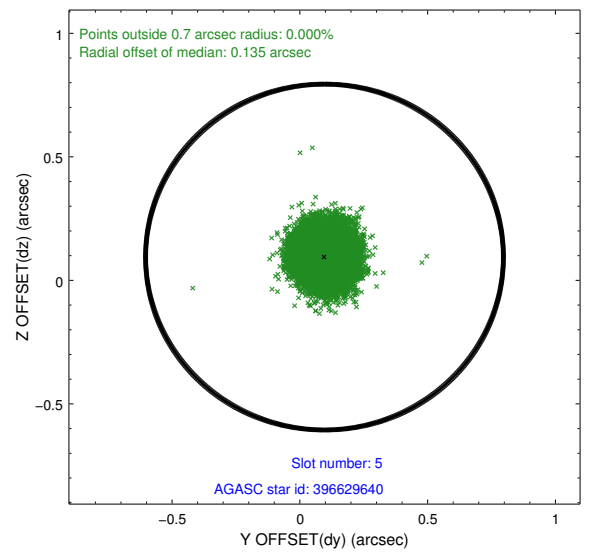
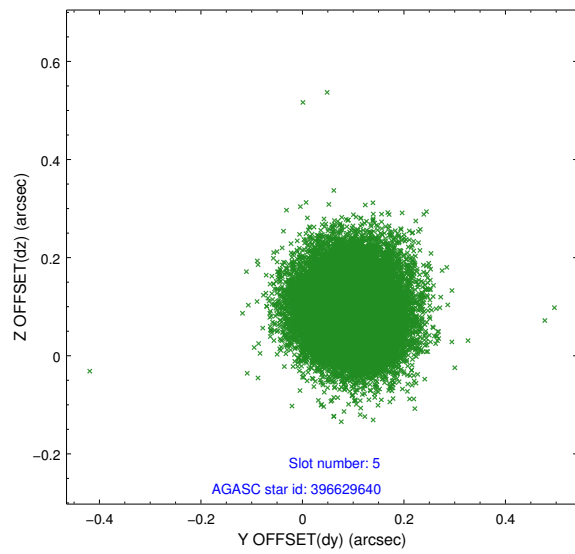
## 2.4.2 Slot 4



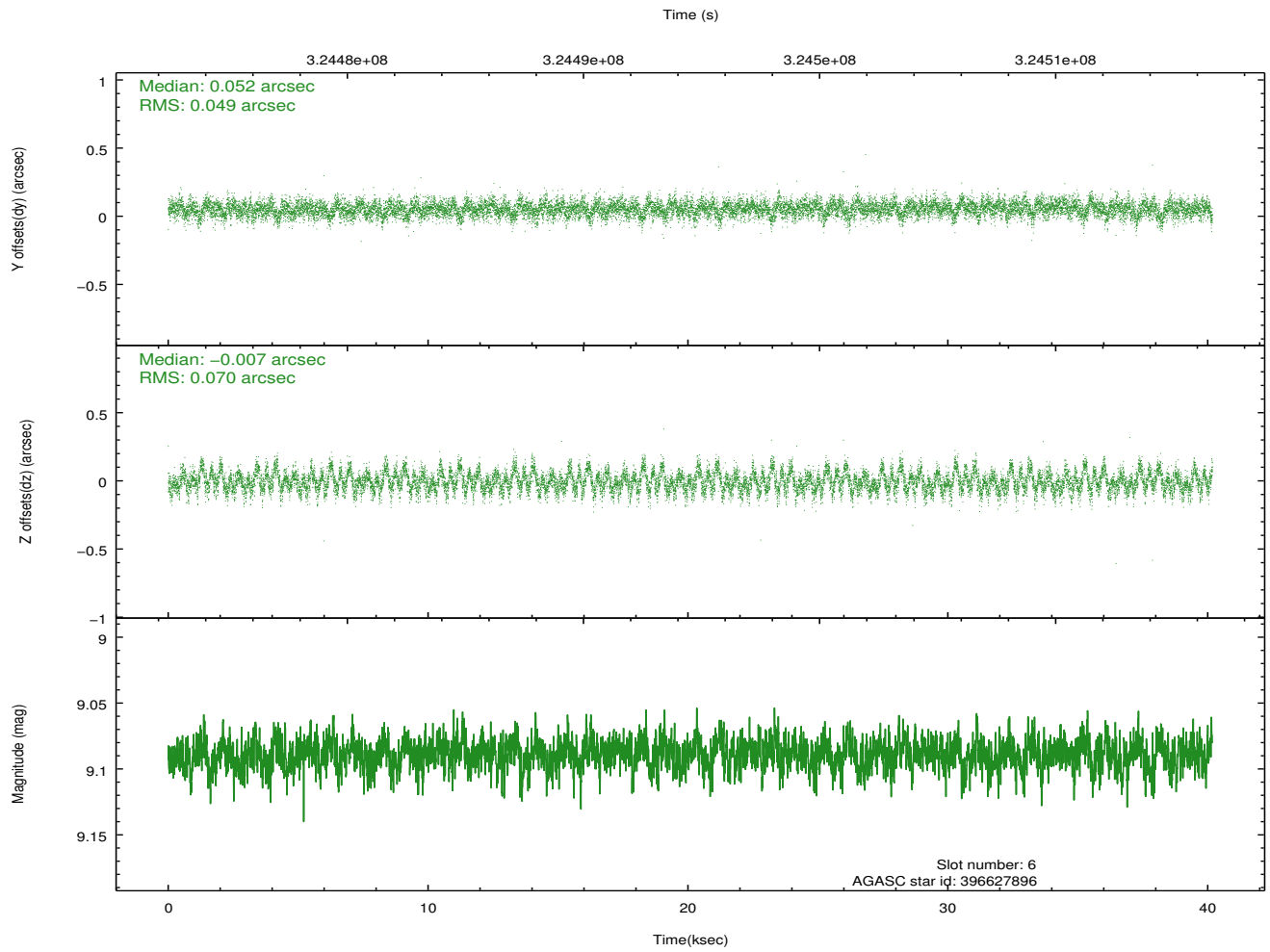
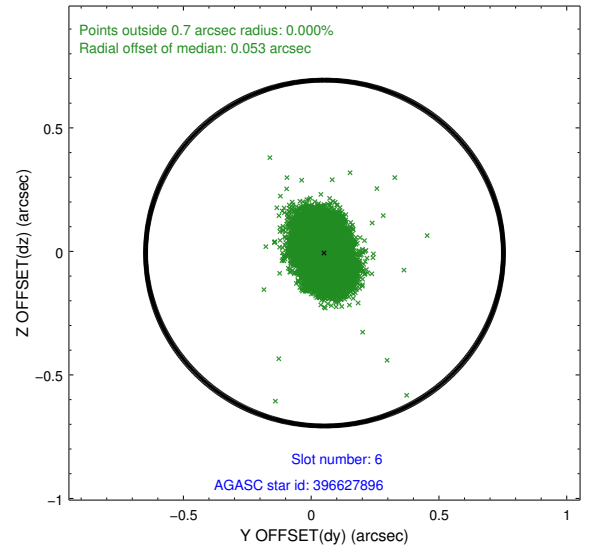
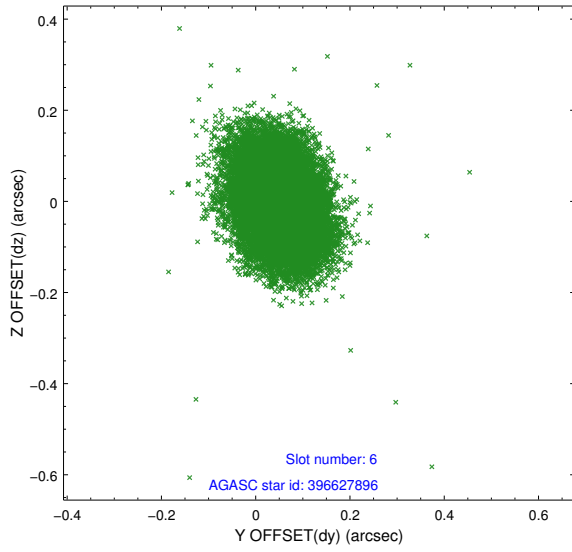
Time (s)



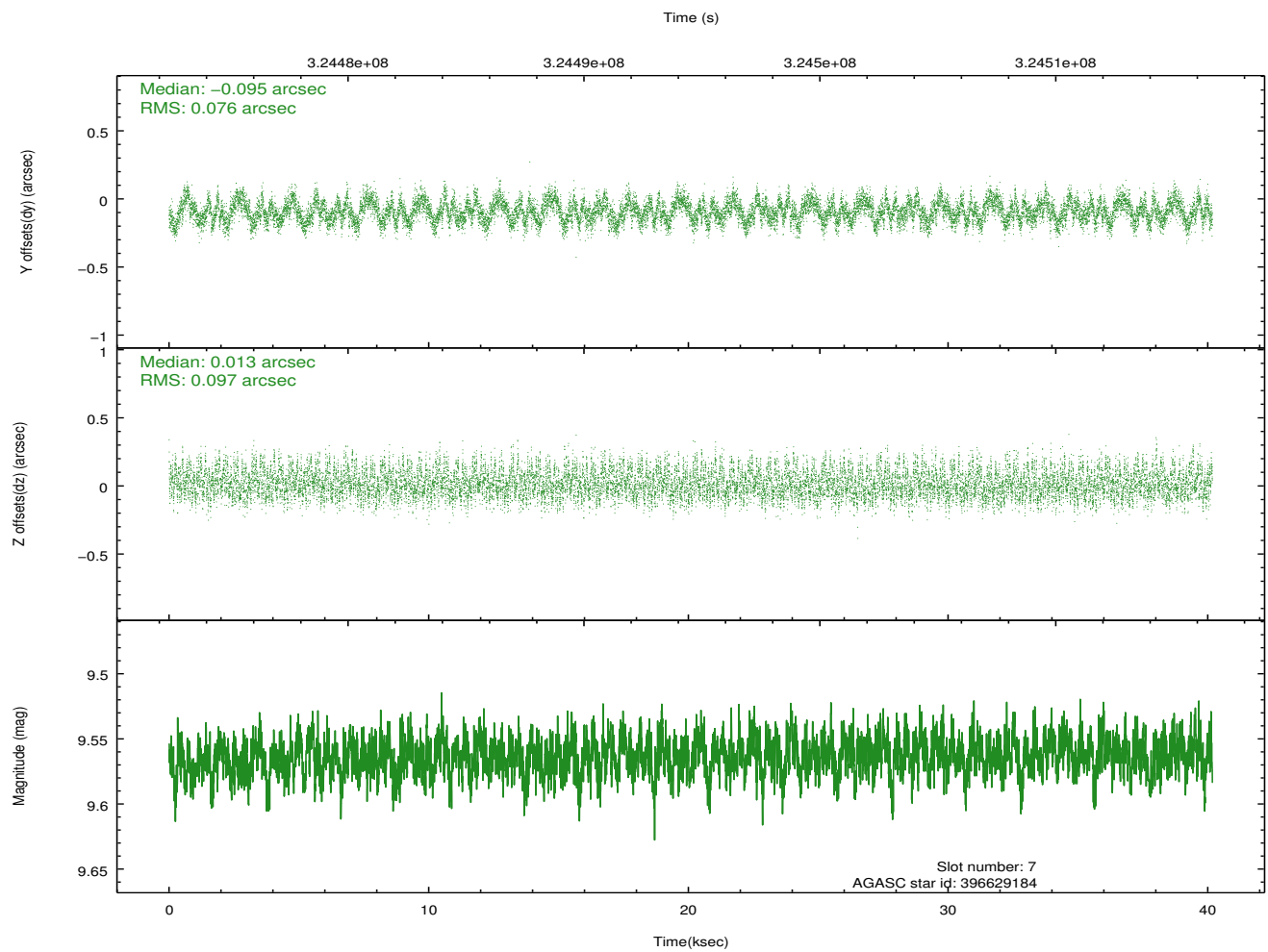
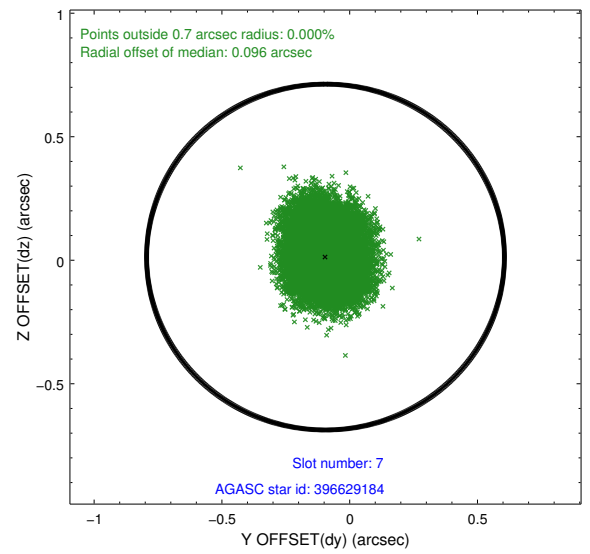
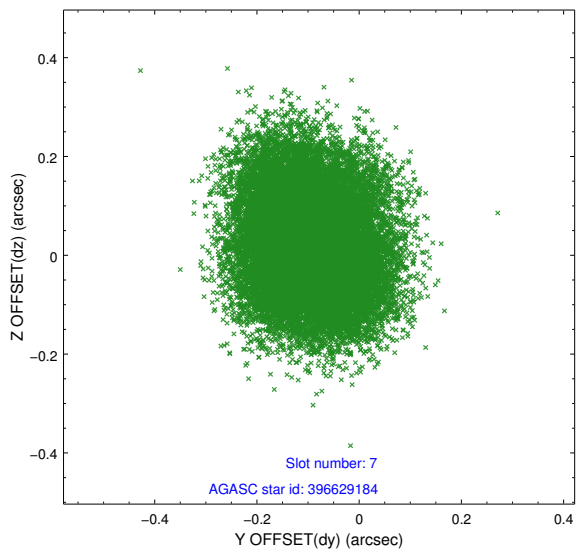
### 2.4.3 Slot 5



### 2.4.4 Slot 6

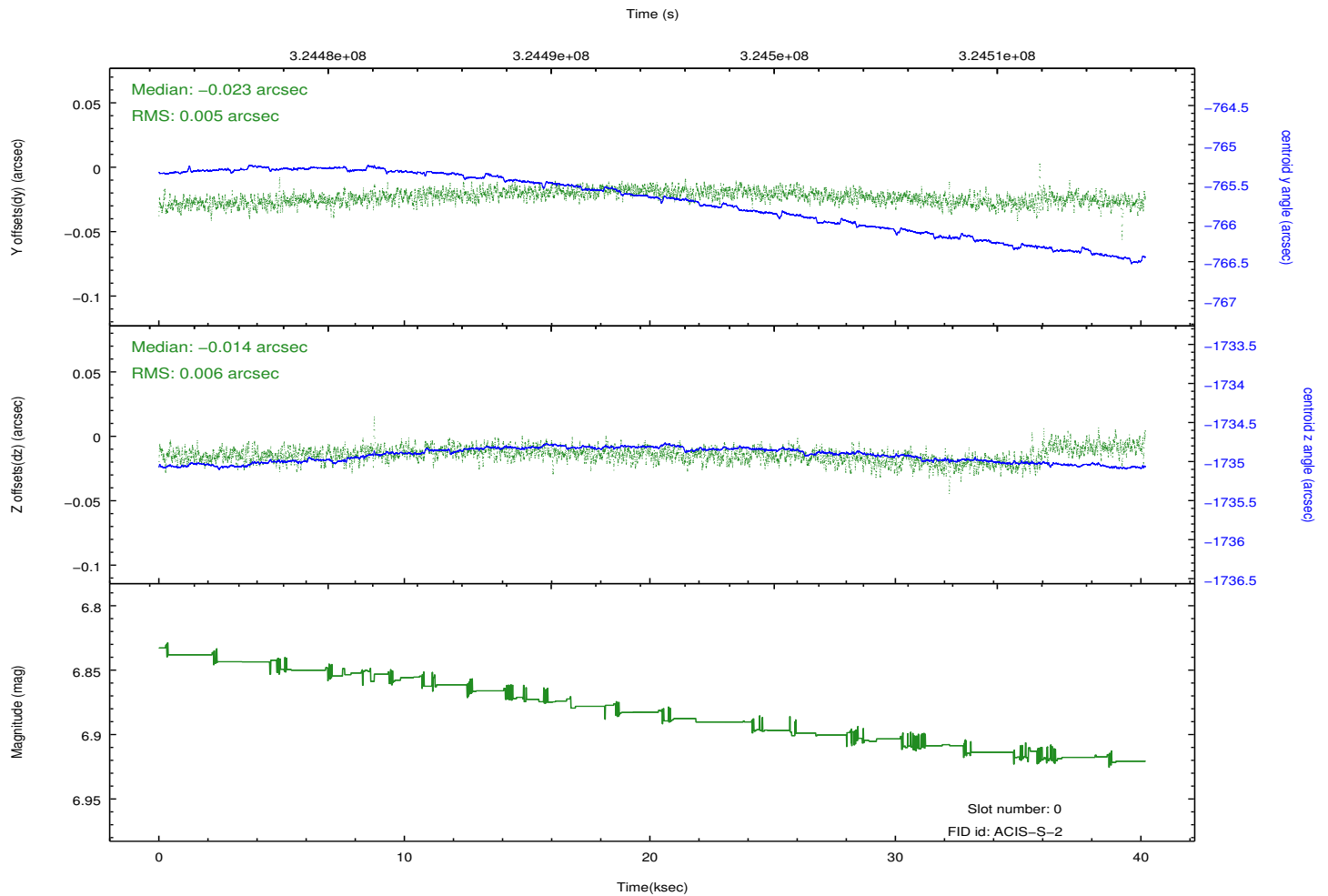
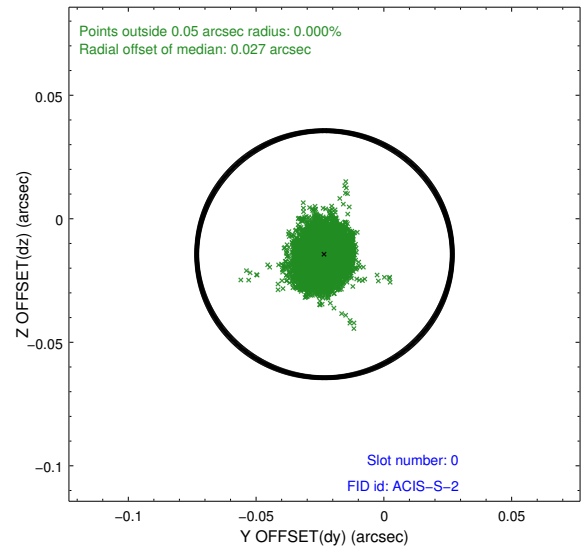
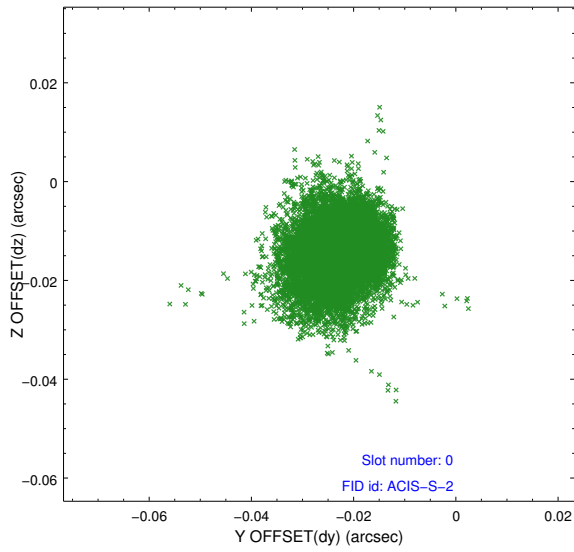


## 2.4.5 Slot 7

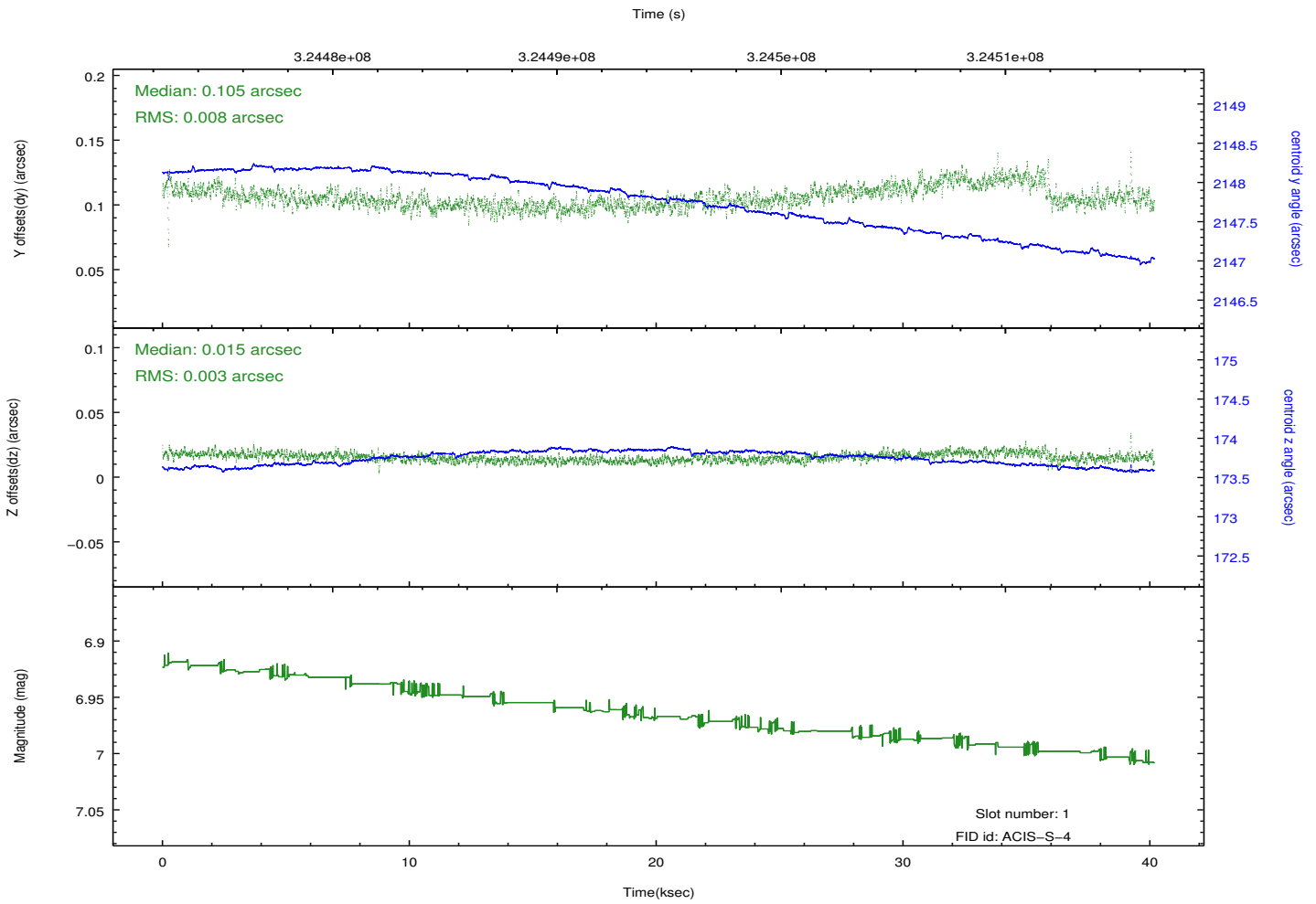
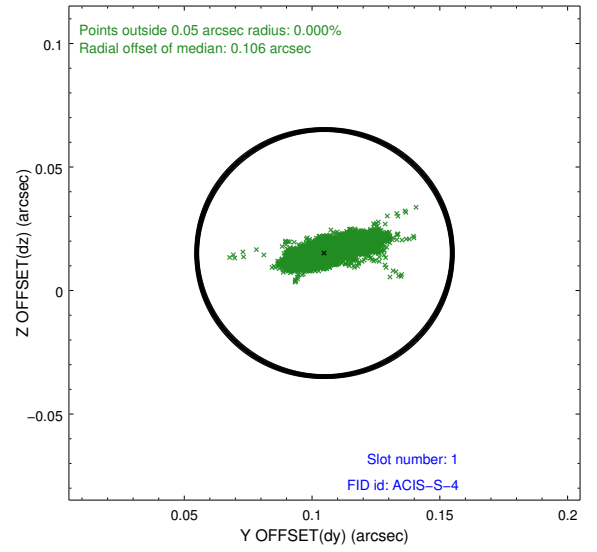
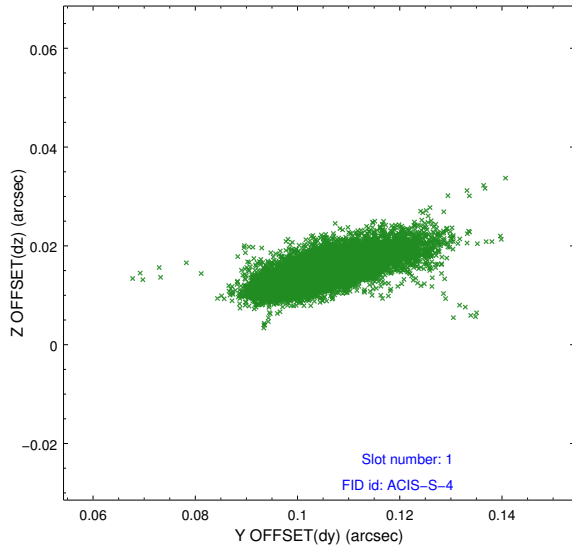


## 2.5 FID Slots

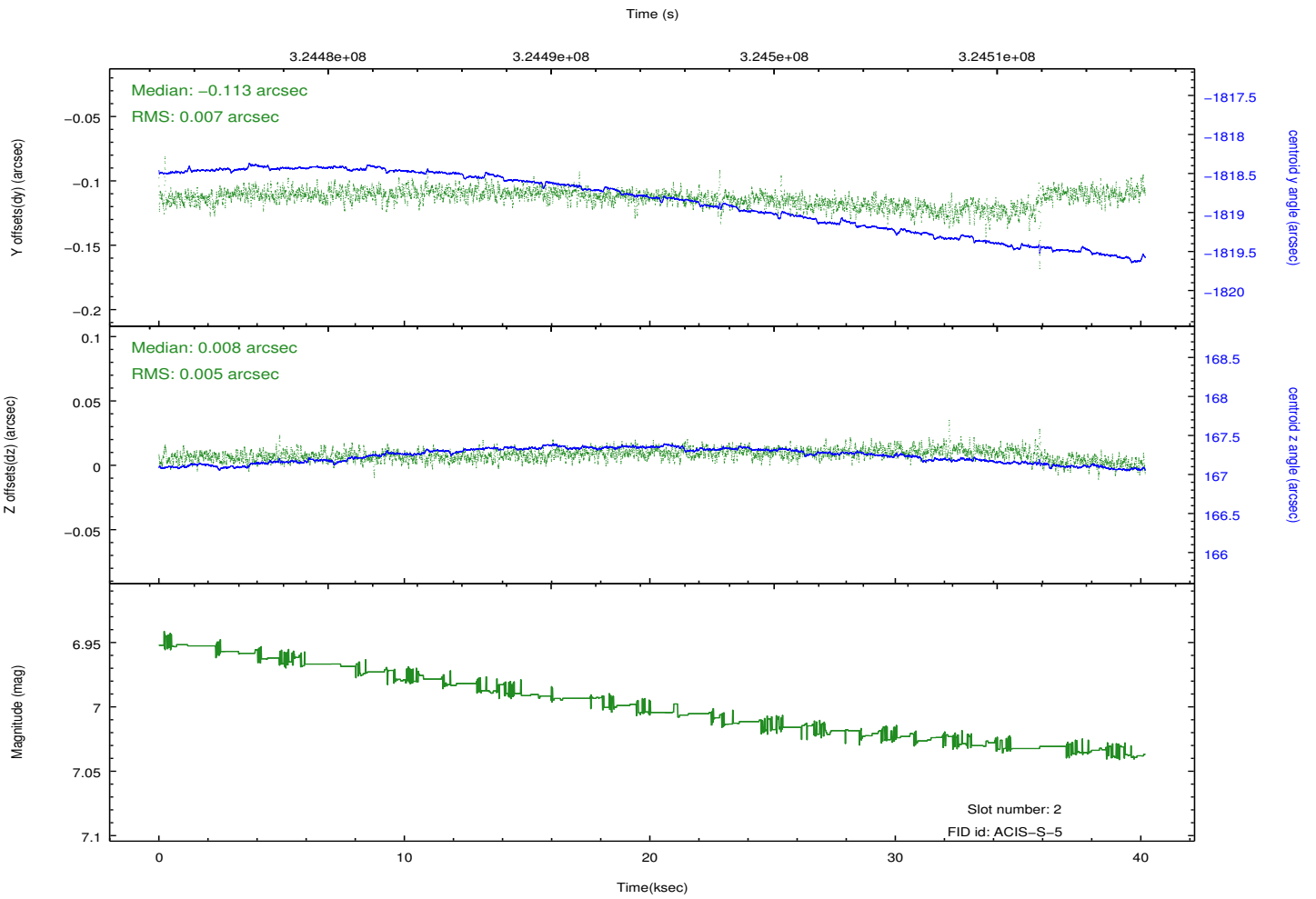
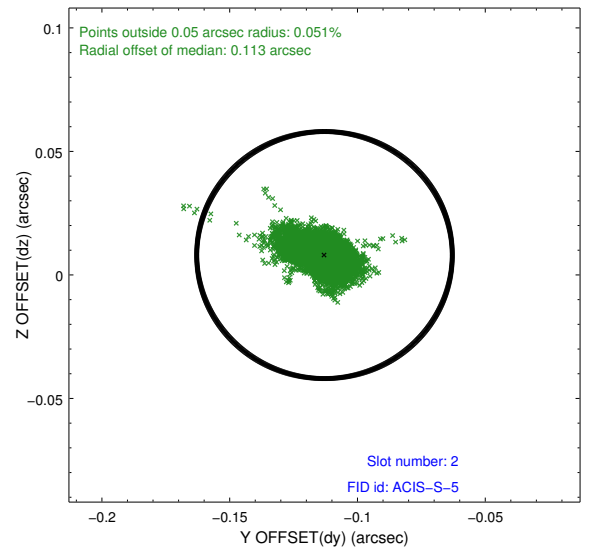
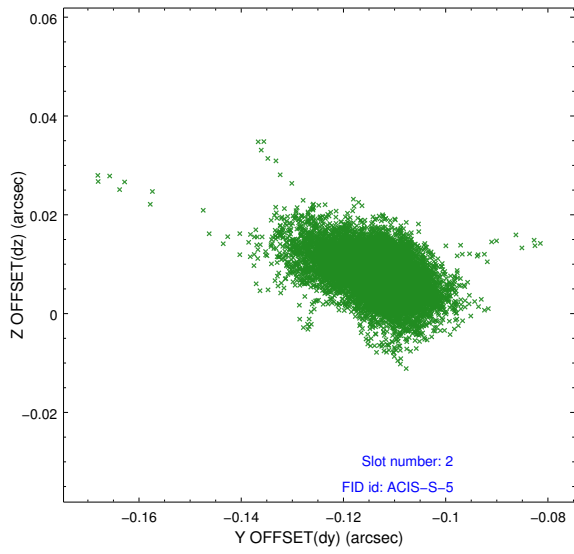
### 2.5.1 Slot 0



## 2.5.2 Slot 1



### 2.5.3 Slot 2



# A Summary

## A.1 Status

V&V Scientist	Jen Lauer
V&V Date (YYYY-MM-DD)	2012.05.15
V&V Edition	1
V&V Disposition and Status	OK
V&V Charge Time	40.1503998

## A.2 Comments