

V&V Reference Report

L2 ASCDS Version : 8.4.4

Observation 9435 - L2 Version 3
Chandra X-Ray Center

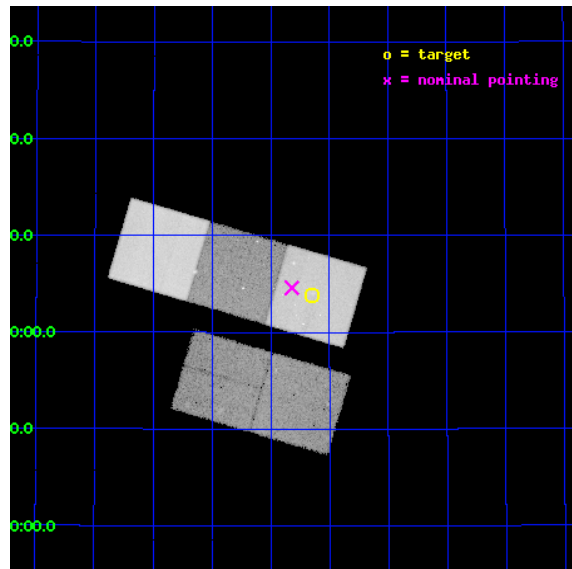
L2 Processing Date : May 24 2012

Contents

1	Front	2
2	OBI	3
2.1	OBI	3
2.1.1	Images	3
2.1.2	Bias	3
2.1.3	Parameters	4
2.1.4	Events	4
2.2	Compared Parameters	5
2.3	Aspect	6
2.4	Star Slots	9
2.4.1	Slot 3	9
2.4.2	Slot 4	10
2.4.3	Slot 5	11
2.4.4	Slot 6	12
2.4.5	Slot 7	13
2.5	FID Slots	14
2.5.1	Slot 0	14
2.5.2	Slot 1	15
2.5.3	Slot 2	16
A	Summary	17
A.1	Status	17
A.2	Comments	17

1 Front

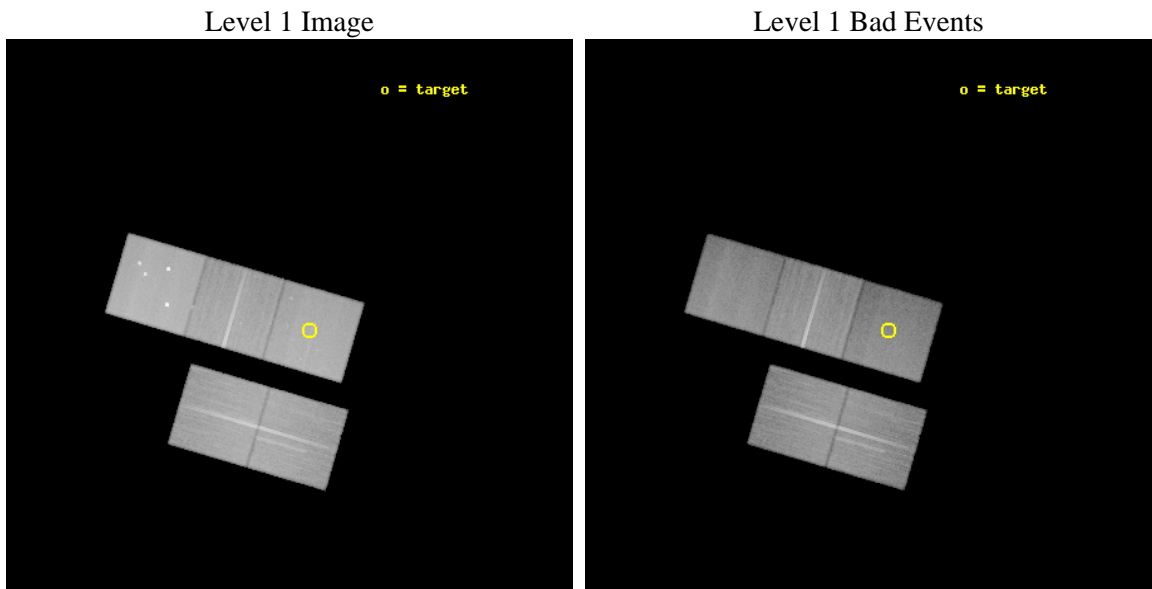
seq_num	900781	Sequence number
obs_id	9435	Observation id
title	Intermediate Redshift Groups in the XBootes Survey	Proposal title
observer	Professor Gordon Garmire	Principal investigator
object	CXOXB J143508.8+350349	Source name
dtycycle	0	
cycle	P	events from which exps? Prim/Second/Both
ra_targ	218.787083	Observer's specified target RA [deg]
dec_targ	35.063667	Observer's specified target Dec [deg]
ra_nom	218.83014928476	Nominal RA [deg]
dec_nom	35.076561545223	Nominal Dec [deg]
roll_nom	16.343748190536	Nominal Roll [deg]
revision	3	Processing version of data
ontime	45142.200347185	Sum of GTIs [s]
livetime	44552.384266445	Livetime [s]
ontime2	45135.918426454	Sum of GTIs [s]
ontime3	45132.777466059	Sum of GTIs [s]
ontime5	45142.200347185	Sum of GTIs [s]
ontime6	45135.918396533	Sum of GTIs [s]
ontime7	45142.200347185	Sum of GTIs [s]
l2events	527536	Number of level 2 events



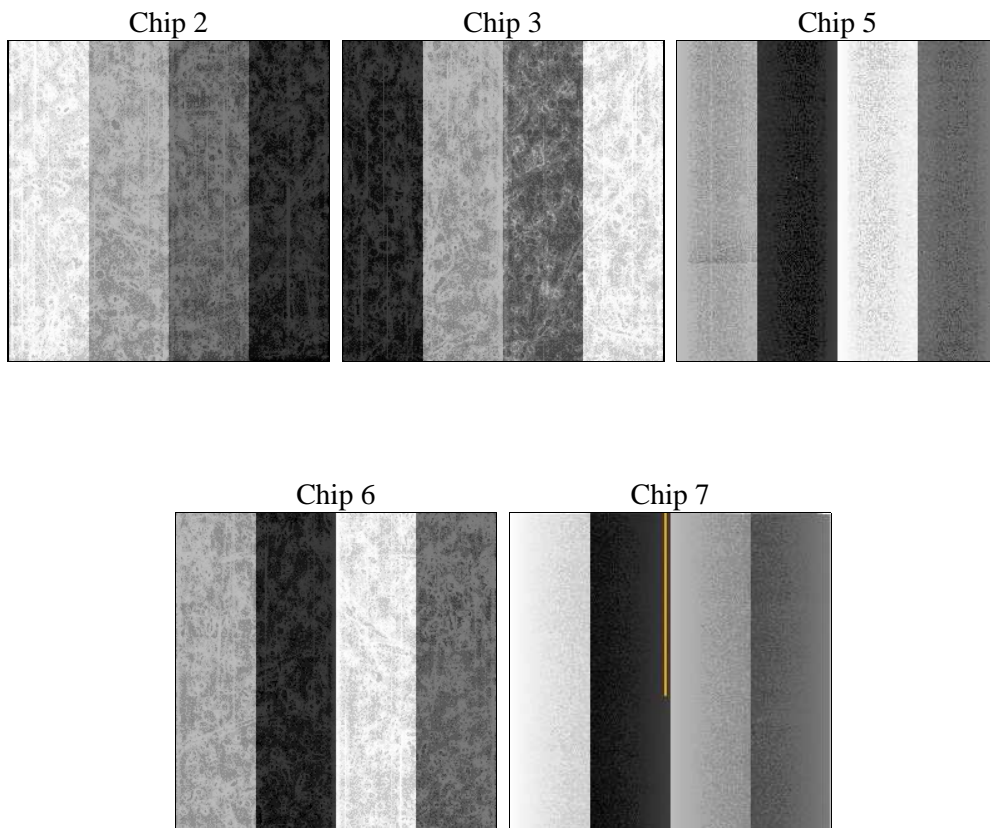
2 OBI

2.1 OBI

2.1.1 Images



2.1.2 Bias



2.1.3 Parameters

obi_num	0	Obi number	sched_exp_time	45000.000000	[s] Scheduled observation exposure time
ascdsver	8.4.4	Processing system revision	ontime	45142.200347185	Sum of GTIs [s]
caldbver	4.4.9	 	ontime2	45135.918426454	Sum of GTIs [s]
date	2012-05-24T04:11:18	Date and time of file creation	ontime3	45132.777466059	Sum of GTIs [s]
revision	3	Processing version of data	ontime5	45142.200347185	Sum of GTIs [s]
			ontime6	45135.918396533	Sum of GTIs [s]
			ontime7	45142.200347185	Sum of GTIs [s]
			l1events	2121176	Number of level 1 events

2.1.4 Events

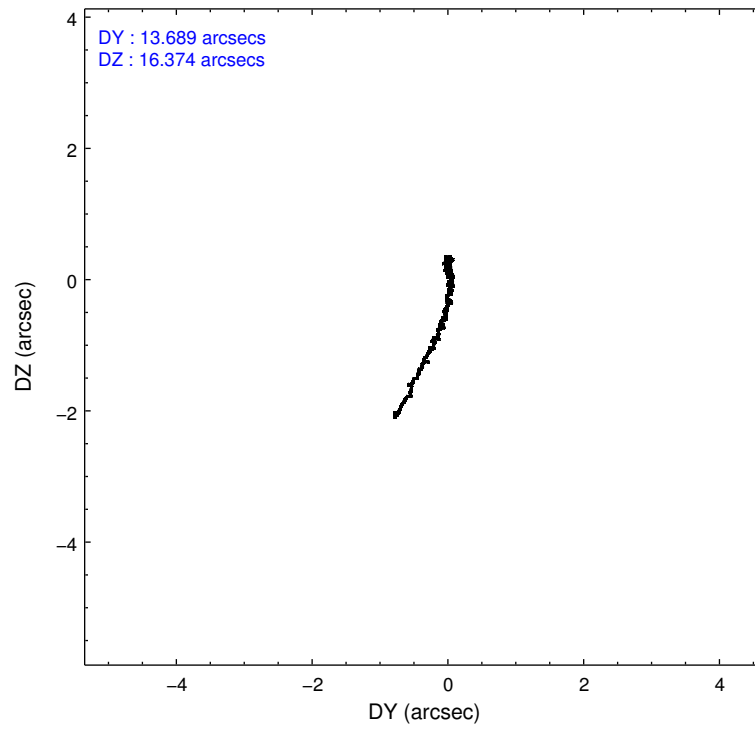
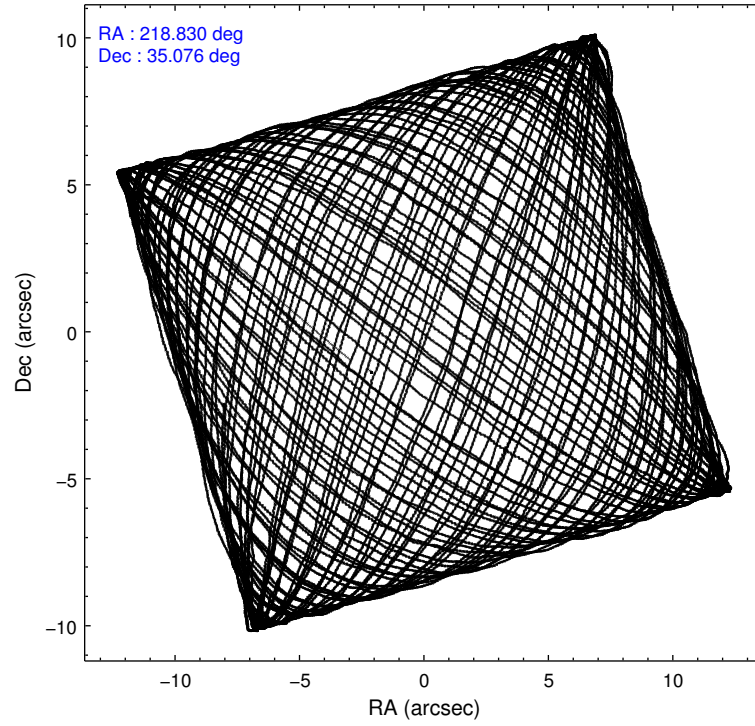
	ccd 2	ccd 3	ccd 5	ccd 6	ccd 7
level 1 events	391652	371926	547315	383937	426346
rejected events	355912	337057	269216	344289	233189
rejected %	90%	90%	49%	89%	54%

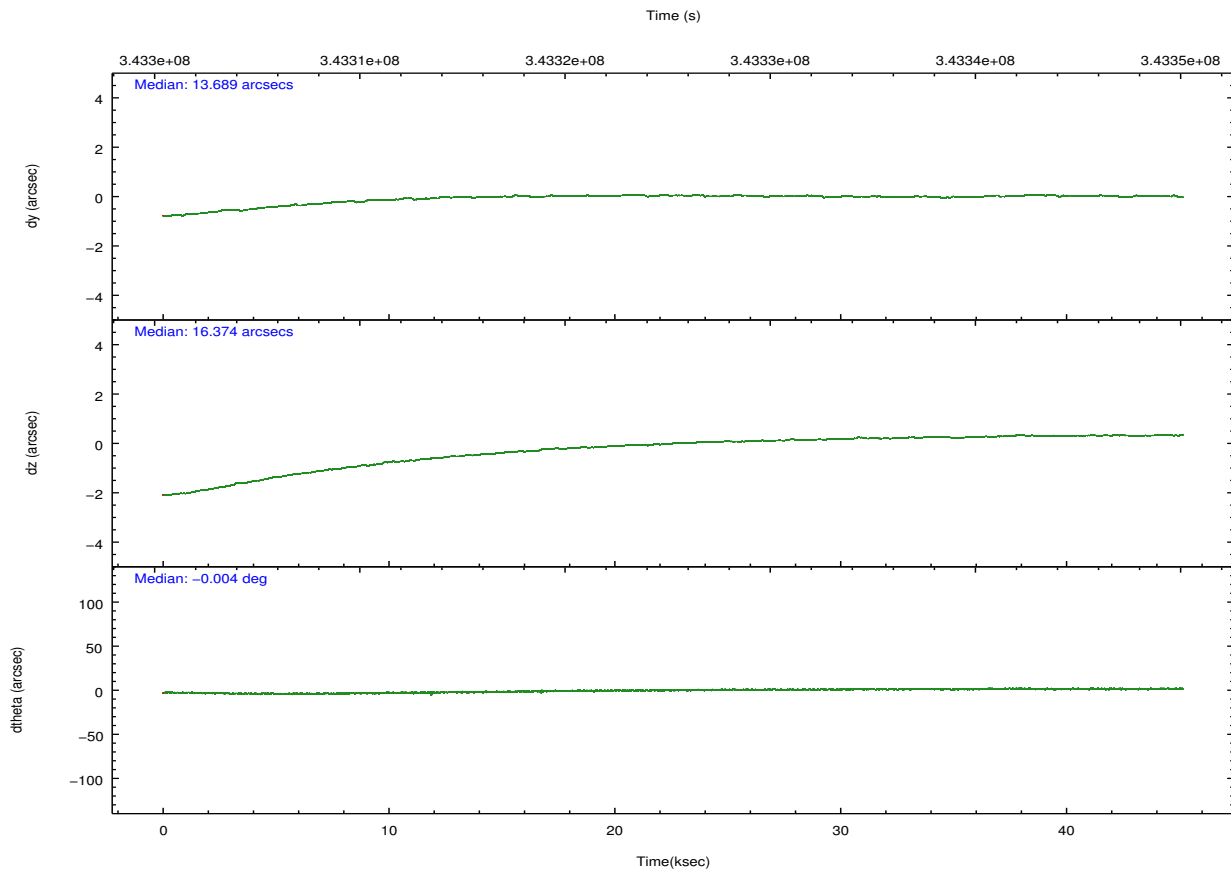
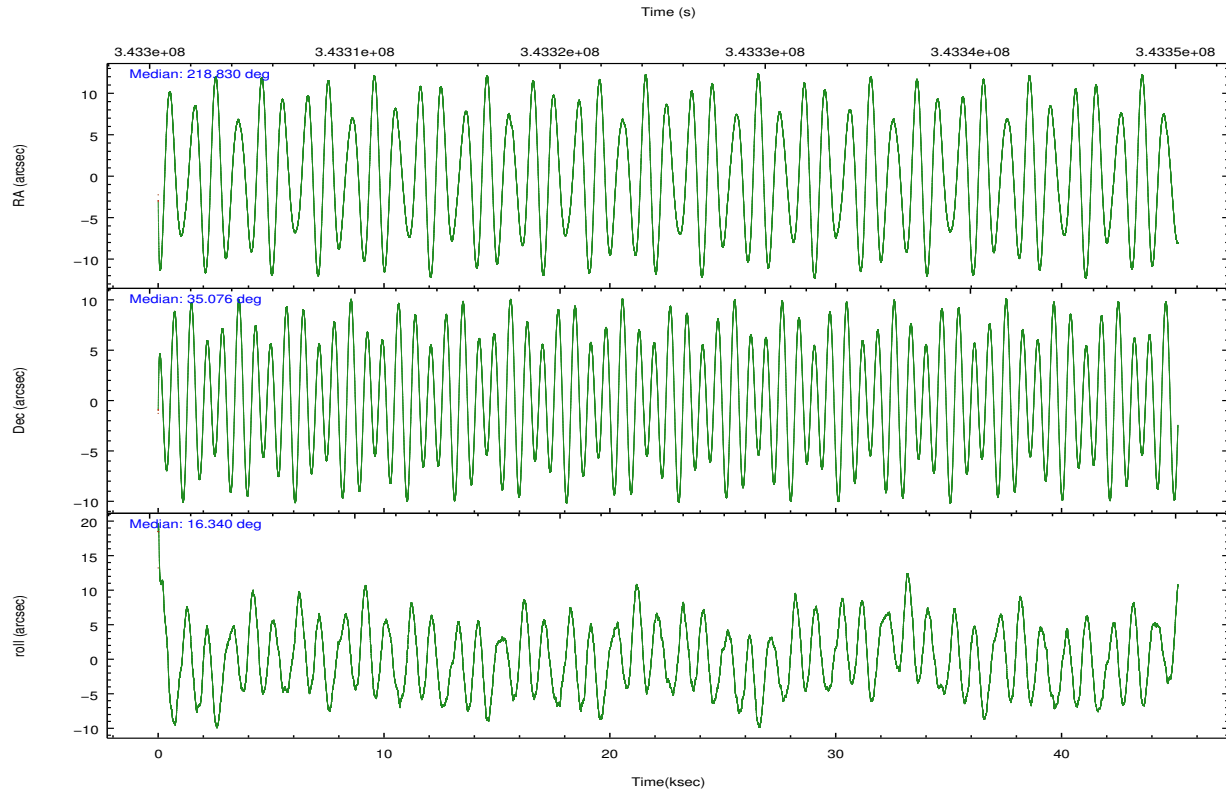
	ccd 2	ccd 3	ccd 5	ccd 6	ccd 7
grade 0 events	12629	12378	42948	14075	18673
	3%	3%	7%	3%	4%
grade 1 events	211	193	1081	187	606
	0%	0%	0%	0%	0%
grade 2 events	8958	7869	79248	8916	39926
	2%	2%	14%	2%	9%
grade 3 events	3924	4000	10967	4294	17874
	1%	1%	2%	1%	4%
grade 4 events	3993	3959	10506	4321	17800
	1%	1%	1%	1%	4%
grade 5 events	11929	15065	41773	15530	44609
	3%	4%	7%	4%	10%
grade 6 events	6712	7104	137925	8493	101240
	1%	1%	25%	2%	23%
grade 7 events	343296	321358	222867	328121	185618
	87%	86%	40%	85%	43%

2.2 Compared Parameters

Parameter	Planned	Actual	Parameter	Planned	Actual
Instrument	ACIS	ACIS	Obspar format version number	7	7
Detector	ACIS-23567	ACIS-23567	Obspar file type	PREDICTED	ACTUAL
Grating	NONE	NONE	Obspar update status	NONE	UPDATED
Data mode	VFAINT	VFAINT	CCD I0 on	N	N
Observation mode	POINTING	POINTING	CCD I1 on	N	N
[deg] Pointing RA	218.807435	218.8301492847604	CCD I2 on	O1	Y
[deg] Pointing Dec	35.056528	35.07656154522259	CCD I3 on	O2	Y
[deg] Pointing Roll	16.200171	16.34374819053566	CCD S0 on	N	N
[mm] SIM focus pos	-0.684267	-0.6828225247311905	CCD S1 on	Y	Y
[mm] SIM defocus	0	0.001444936568705701	CCD S2 on	Y	Y
[mm] SIM translation stage pos	-190.132523	-190.1400660498719	CCD S3 on	Y	Y
[mm] SIM translation stage offset	0	0.00754346686406393	CCD S4 on	N	N
[s] Observation start time (MET)	343302840.184000	343301589.25726	CCD S5 on	N	N
Observation start date	2008-11-17T09:52:55	2008-11-17T09:33:09	Number of optional ACIS chips dropped	0	0
[s] Observation end time (MET)	343347840.184000	343348465.07207	On-chip summing requested	N	N
Observation end date	2008-11-17T22:22:55	2008-11-17T22:34:25	Subarray requested	NONE	NONE
Read mode	TIMED	TIMED	Alternating exposures requested	N	N
			[s] Primary exposure time	0.000000	3.1

2.3 Aspect





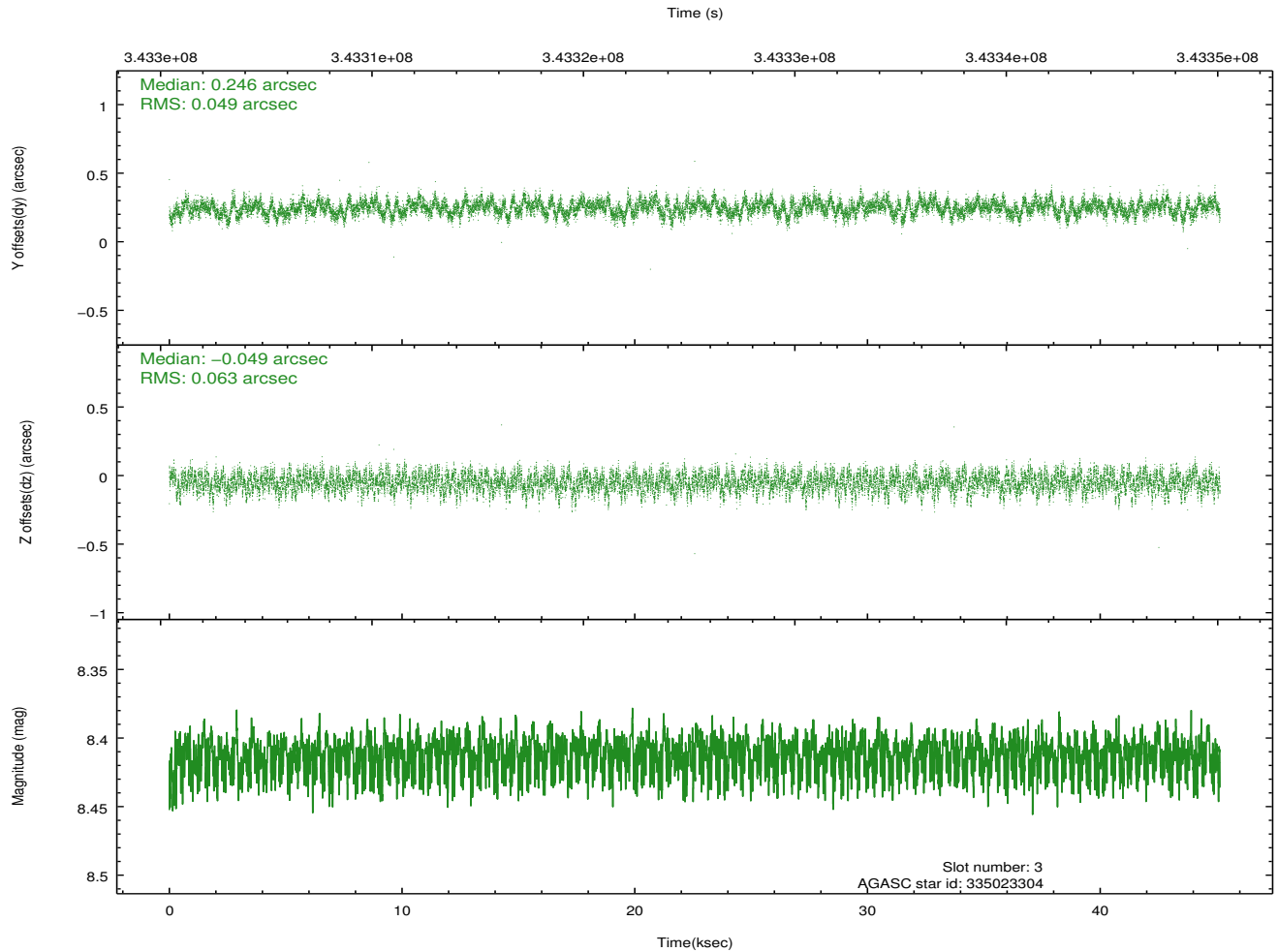
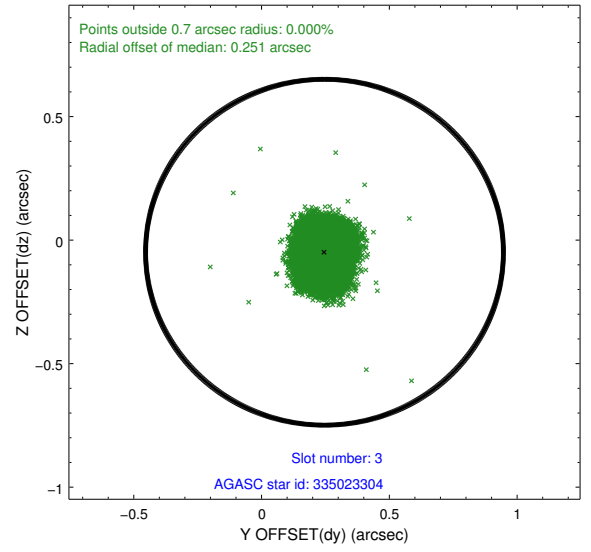
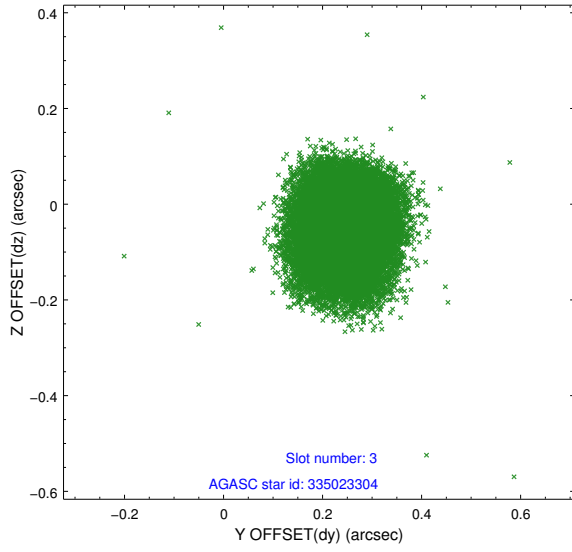
Slot Statistics

slot	status	id	mag	n_pts	med_dy	med_dz	dr1	dr2	ra	dec	mean_y	mean_z
0	FID	ACIS-S-2	6.88	11011	-0.038	-0.014	0.013	0.019	0.000000	0.000000	-766.57	-1737.50
1	FID	ACIS-S-4	6.97	11011	0.170	0.022	0.008	0.015	0.000000	0.000000	2146.92	171.02
2	FID	ACIS-S-5	6.99	11012	-0.164	0.001	0.012	0.021	0.000000	0.000000	-1819.54	164.66
3	GUIDE	335023304	8.41	22015	0.246	-0.049	0.085	0.136	218.883608	34.686545	-154.35	-1341.77
4	GUIDE	335152968	9.74	21979	0.162	0.034	0.120	0.191	219.446087	34.867883	1624.34	-1172.85
5	GUIDE	335153056	10.15	21980	-0.234	0.195	0.154	0.252	219.264627	34.869152	1109.71	-1021.18
6	GUIDE	335554008	9.89	21998	-0.279	-0.391	0.115	0.186	219.383422	35.471863	2040.28	969.28
7	GUIDE	335025040	9.90	21983	0.097	0.215	0.160	0.260	218.601670	34.305240	-1341.37	-2425.61

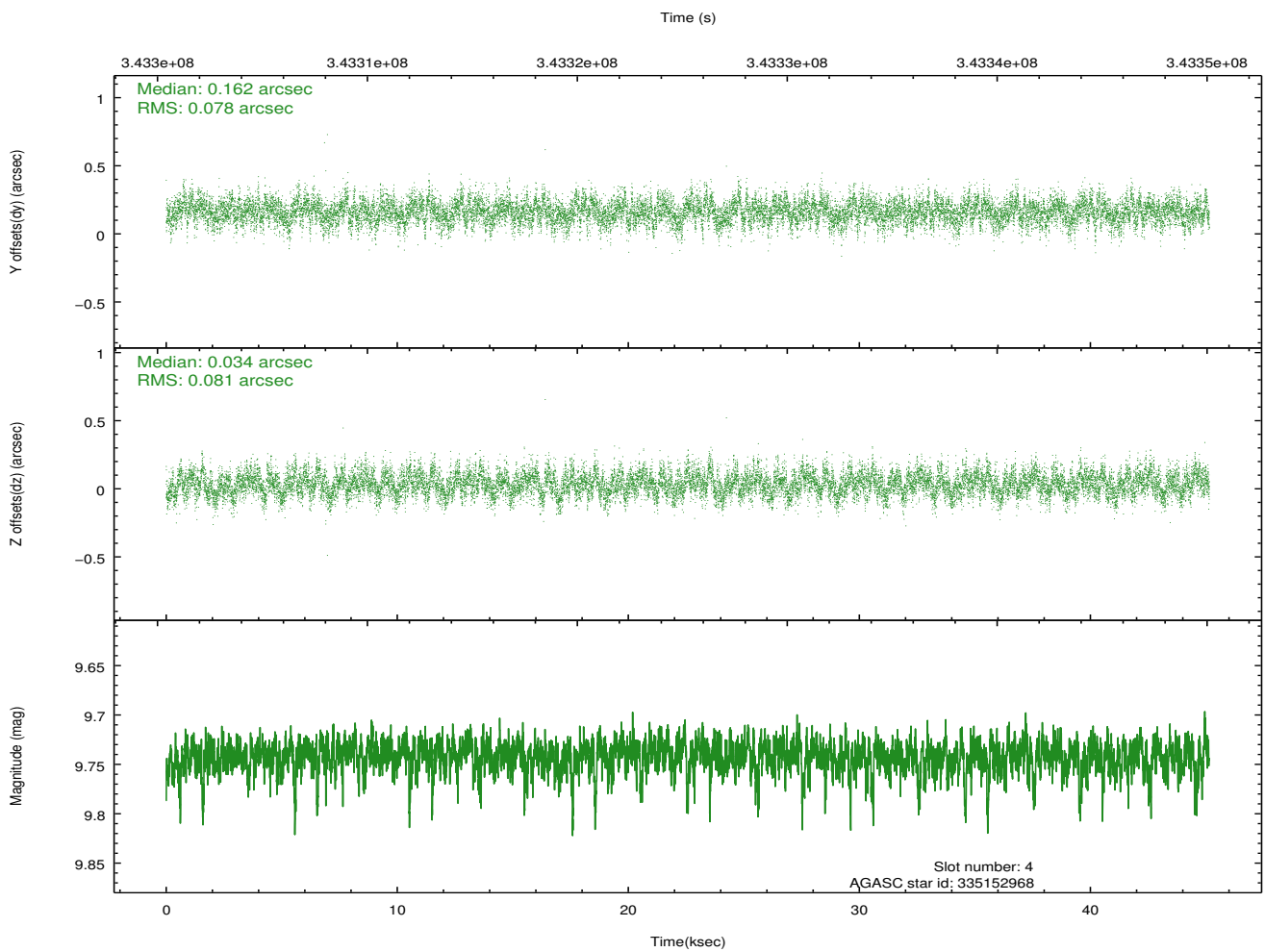
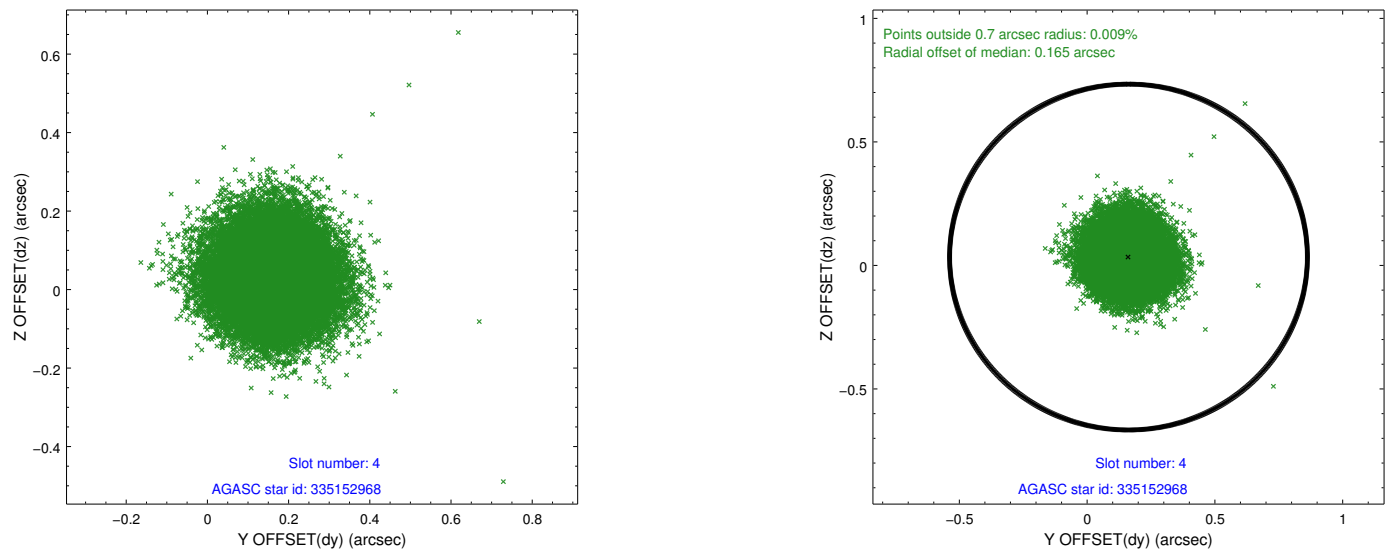
∞

2.4 Star Slots

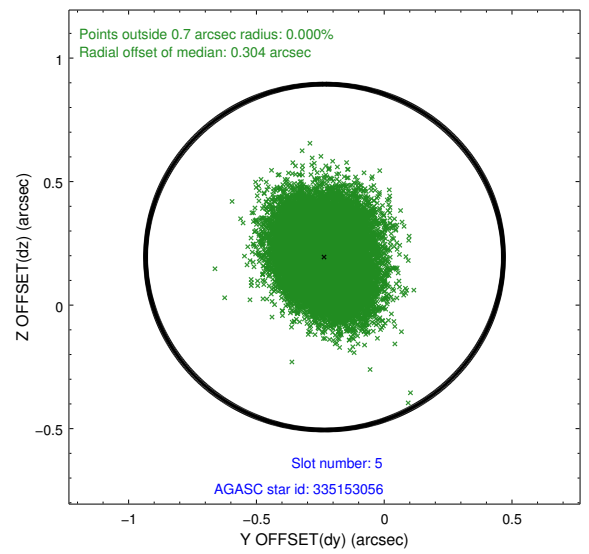
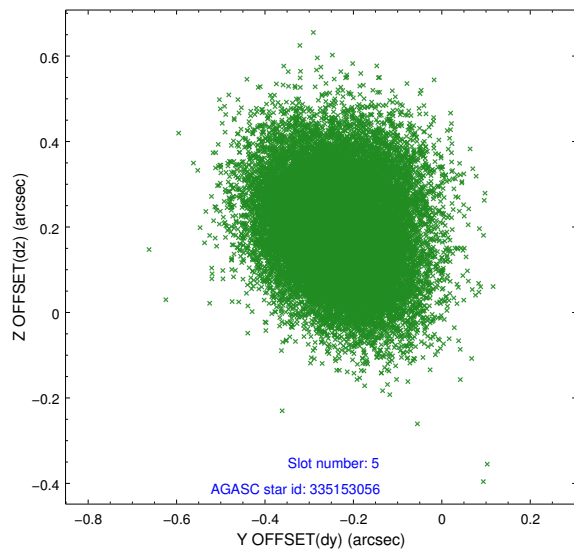
2.4.1 Slot 3



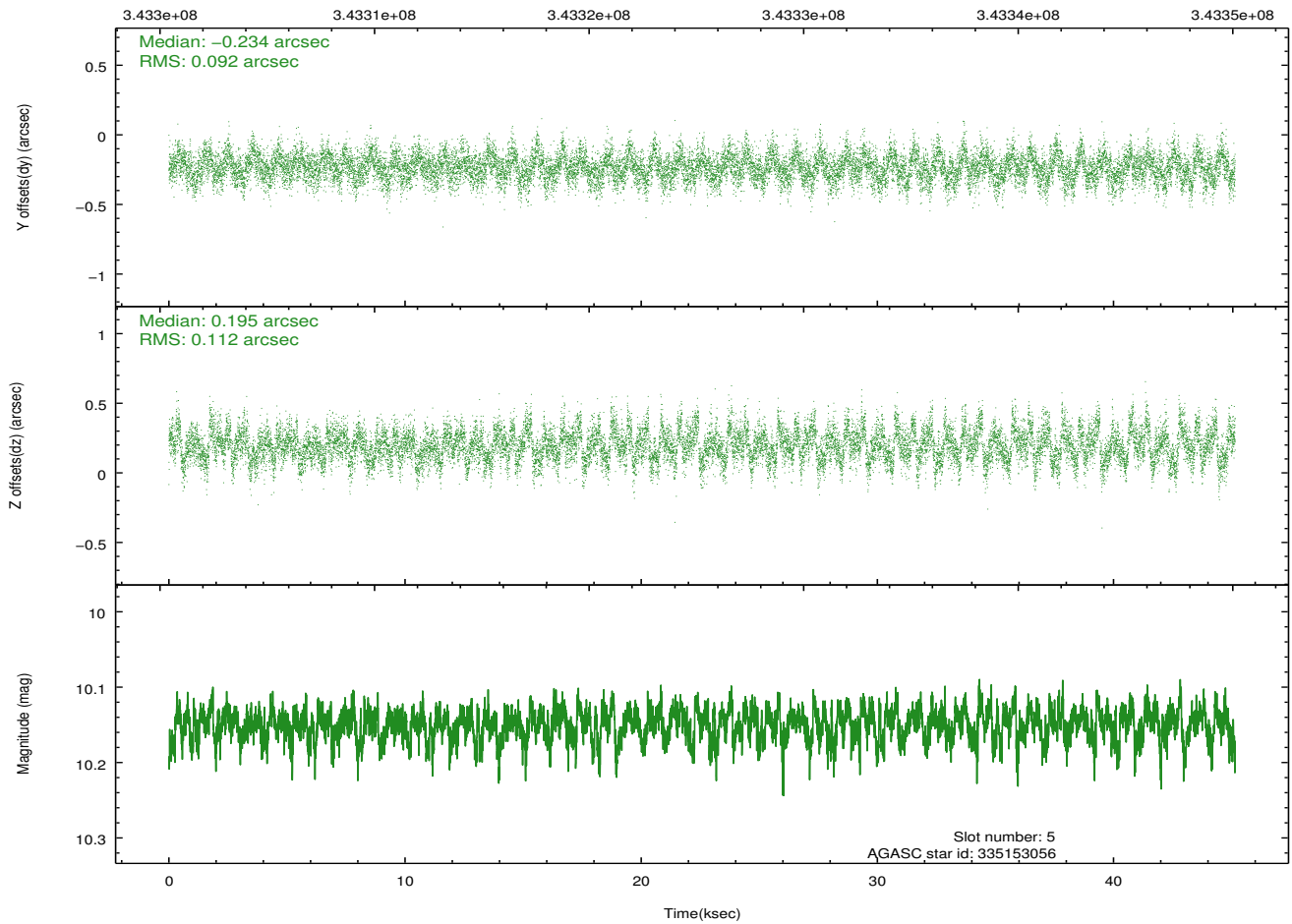
2.4.2 Slot 4



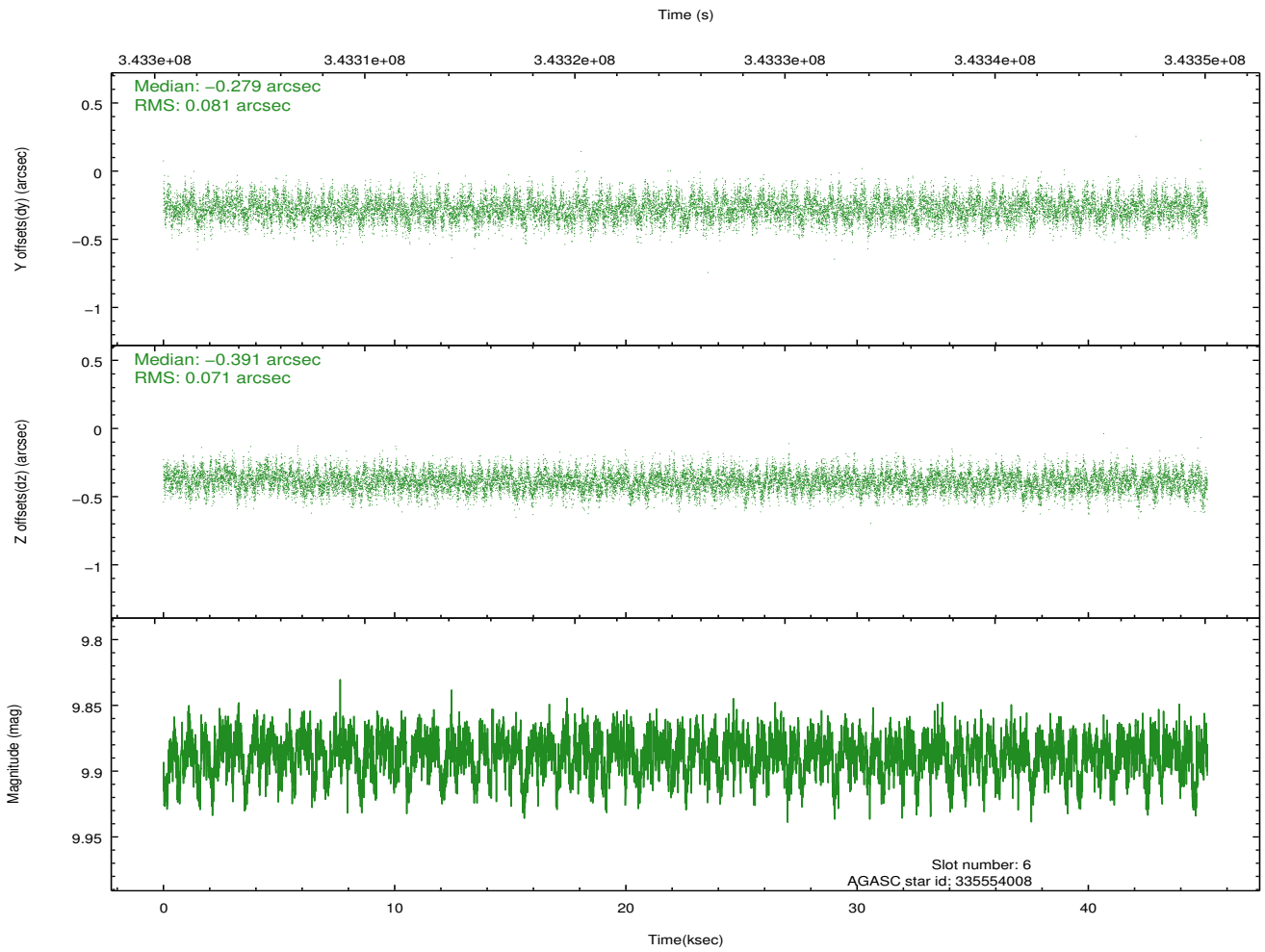
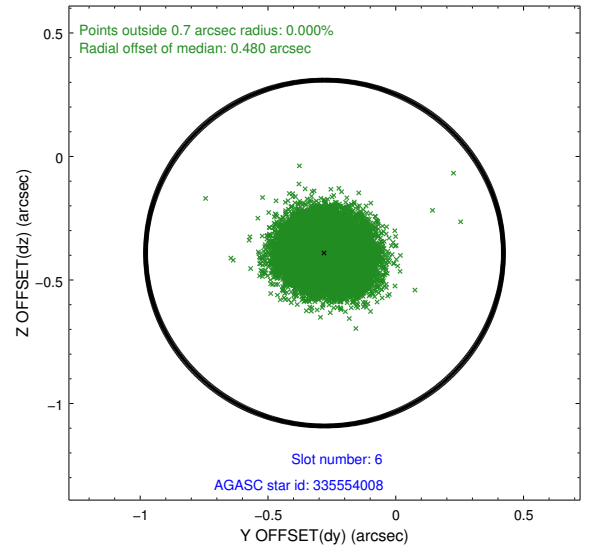
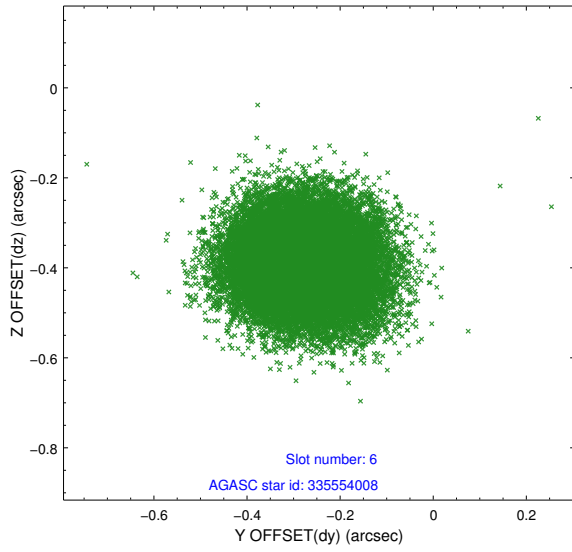
2.4.3 Slot 5



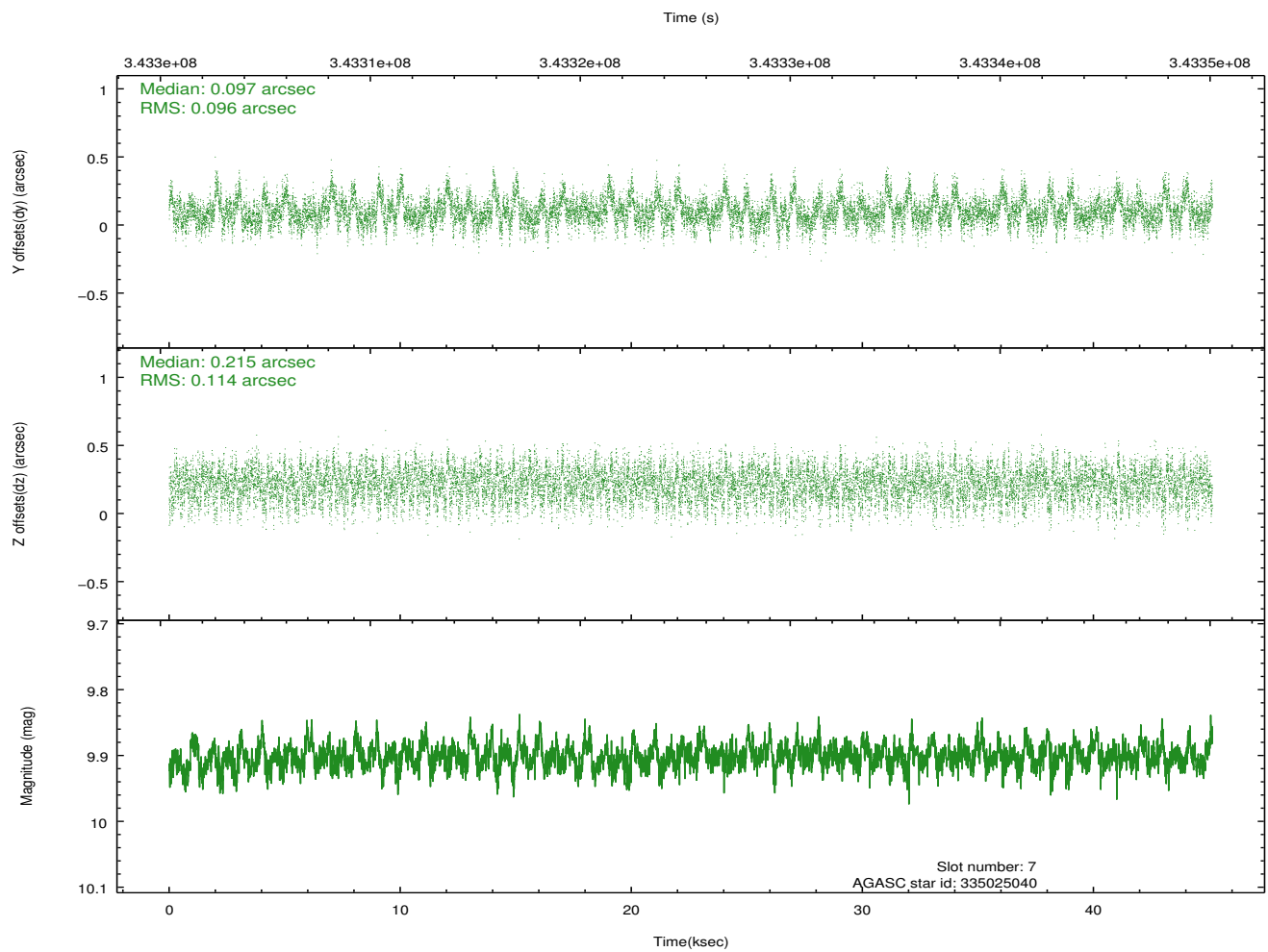
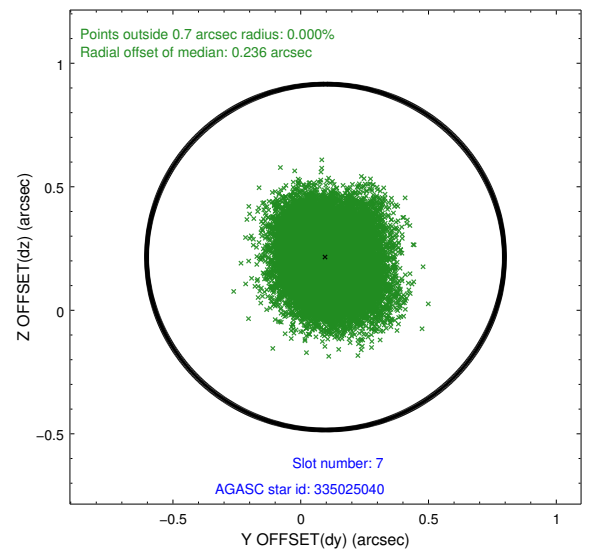
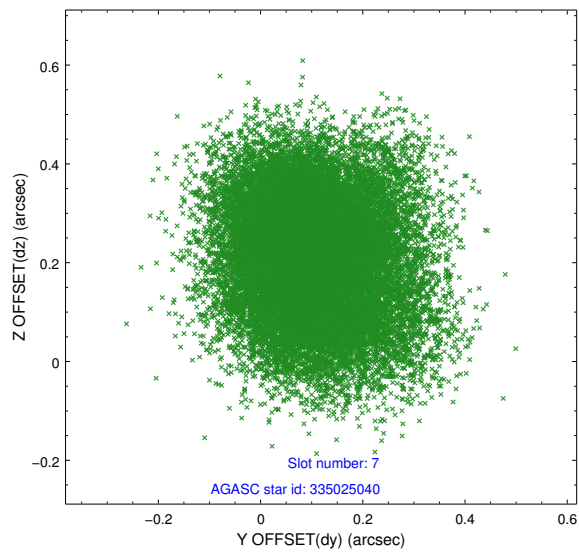
Time (s)



2.4.4 Slot 6

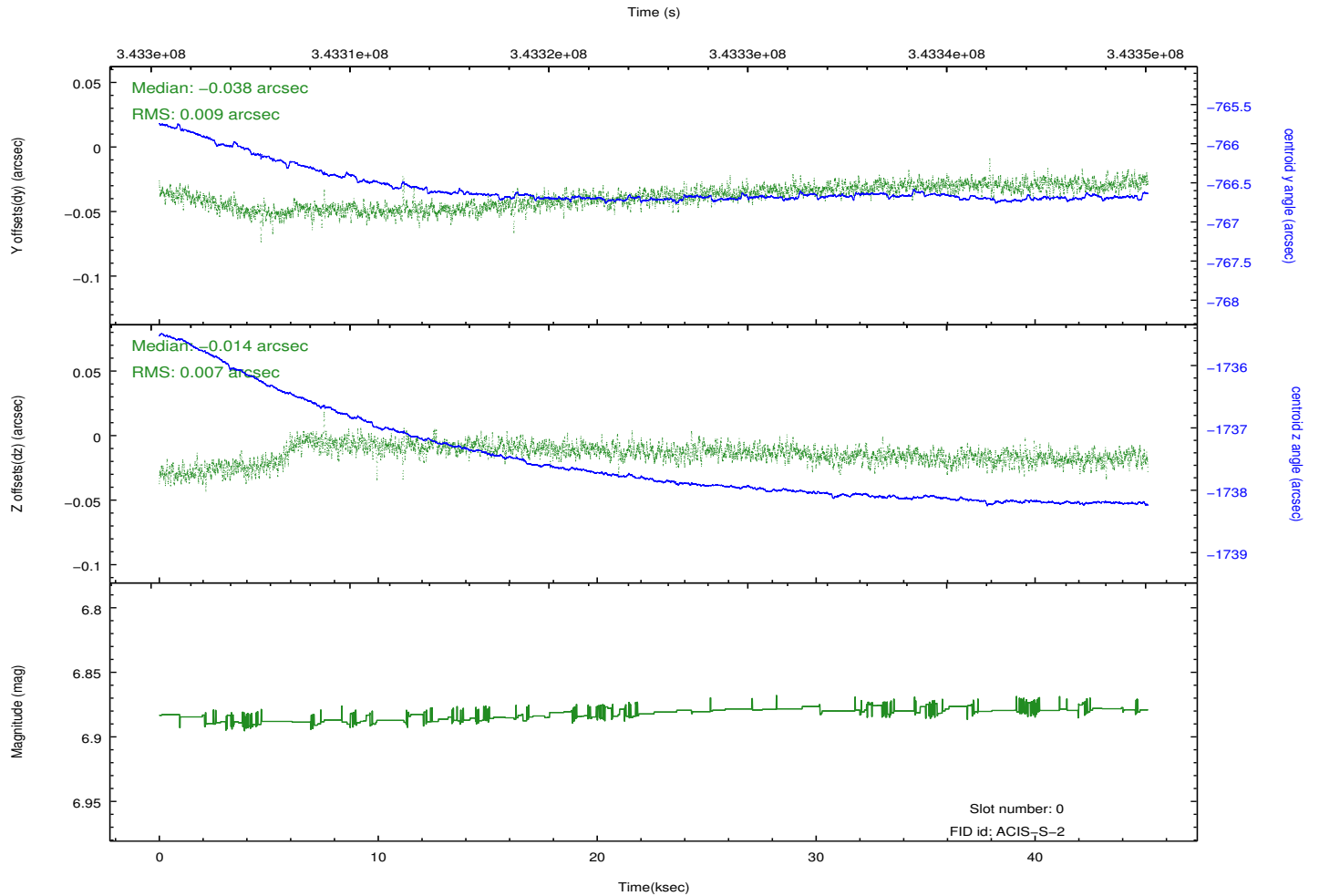
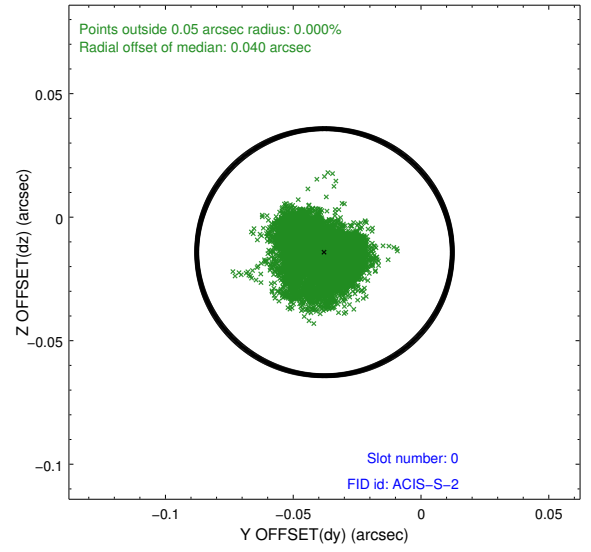
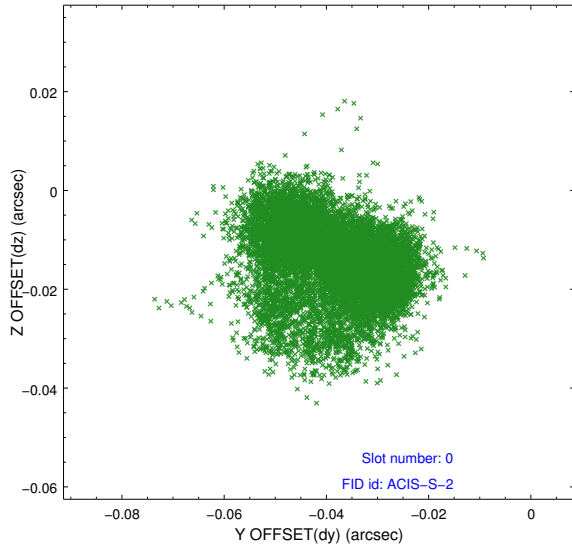


2.4.5 Slot 7

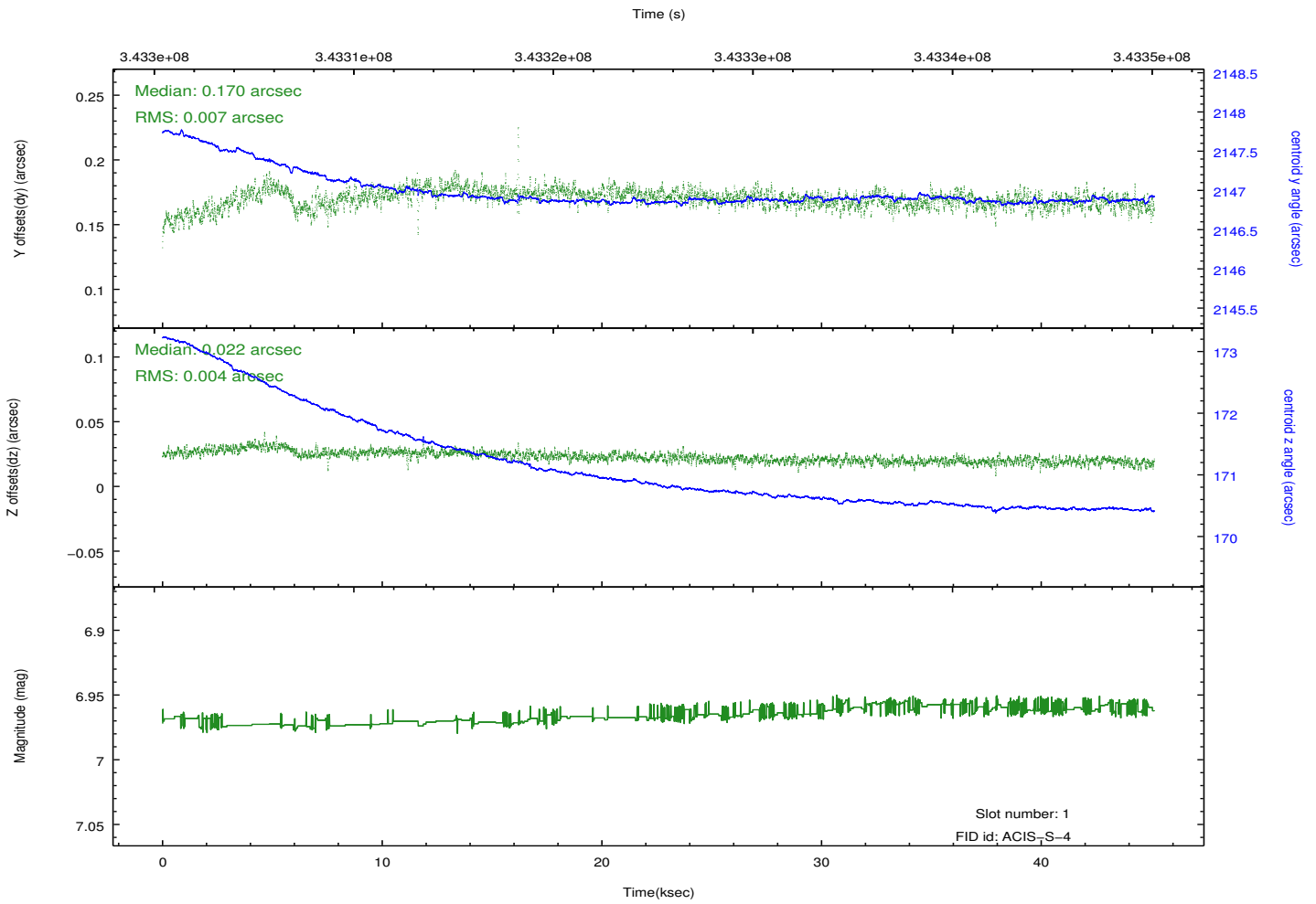
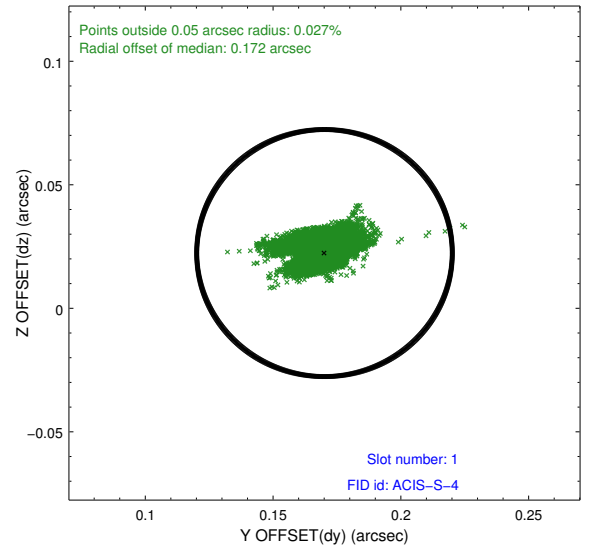
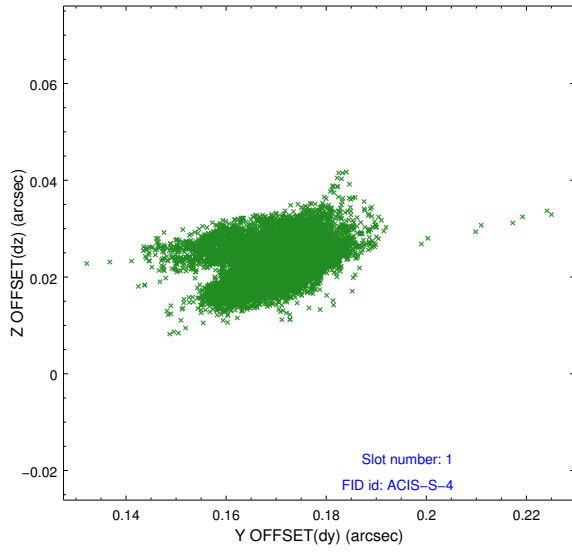


2.5 FID Slots

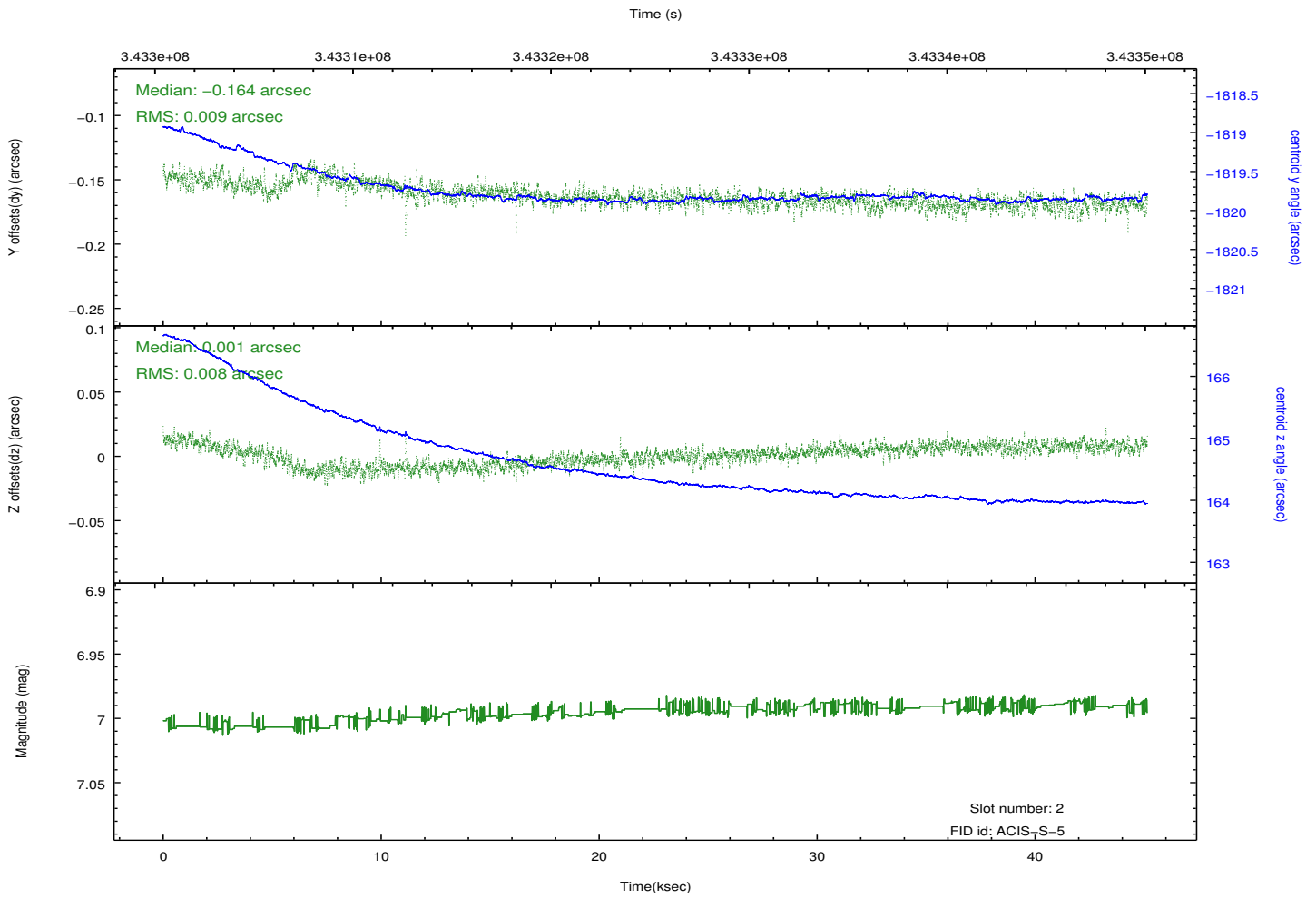
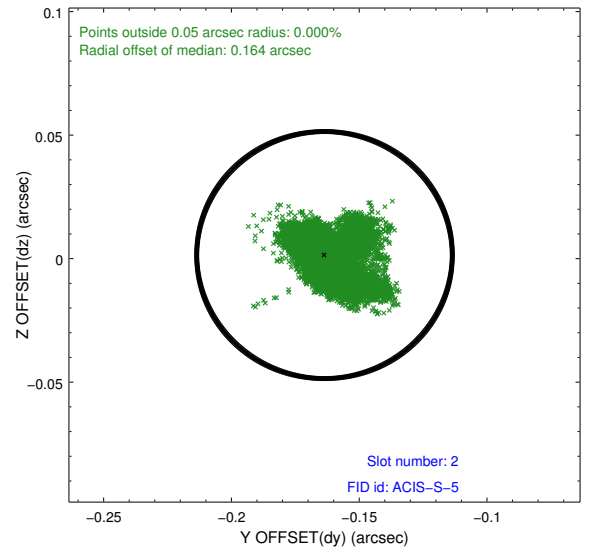
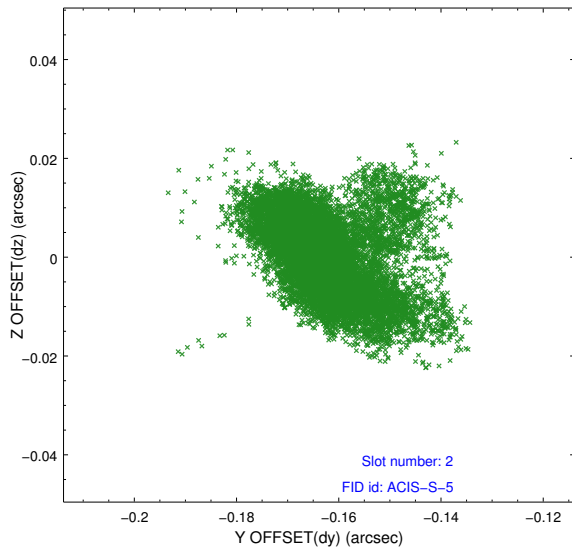
2.5.1 Slot 0



2.5.2 Slot 1



2.5.3 Slot 2



A Summary

A.1 Status

V&V Scientist	Joy Nichols
V&V Date (YYYY-MM-DD)	2012.05.31
V&V Edition	1
V&V Disposition and Status	OK
V&V Charge Time	45.1422003

A.2 Comments

On rare occasions, an anomaly in the instrument causes exposure numbers of records of ACIS data to appear out of order in telemetry or otherwise not be telemetered in the expected manner. This condition can cause a failure to process, or incorrect processed data products. The problem can be easily fixed by removing the corrupted data packets. This observation suffered from this anomaly for less than 1 second. The corrupted data were removed for this reprocessing of the data. There should be no effect on the science data products.