

# V&V Reference Report

## L2 ASCDS Version : 8.4.4

Observation 9495 - L2 Version 2  
Chandra X-Ray Center

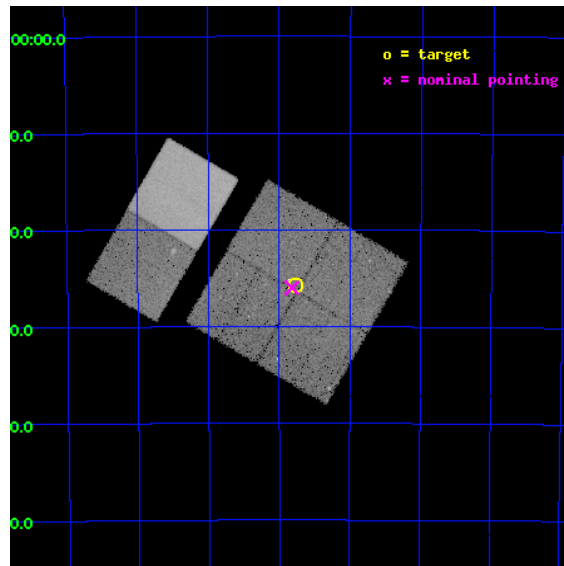
L2 Processing Date : May 13 2012

## Contents

<b>1</b>	<b>Front</b>	<b>2</b>
<b>2</b>	<b>OBI</b>	<b>3</b>
2.1	OBI . . . . .	3
2.1.1	Images . . . . .	3
2.1.2	Bias . . . . .	3
2.1.3	Parameters . . . . .	4
2.1.4	Events . . . . .	4
2.2	Compared Parameters . . . . .	5
2.3	Aspect . . . . .	6
2.4	Star Slots . . . . .	9
2.4.1	Slot 3 . . . . .	9
2.4.2	Slot 4 . . . . .	10
2.4.3	Slot 5 . . . . .	11
2.4.4	Slot 6 . . . . .	12
2.4.5	Slot 7 . . . . .	13
2.5	FID Slots . . . . .	14
2.5.1	Slot 0 . . . . .	14
2.5.2	Slot 1 . . . . .	15
2.5.3	Slot 2 . . . . .	16
<b>A</b>	<b>Summary</b>	<b>17</b>
A.1	Status . . . . .	17
A.2	Comments . . . . .	17

# 1 Front

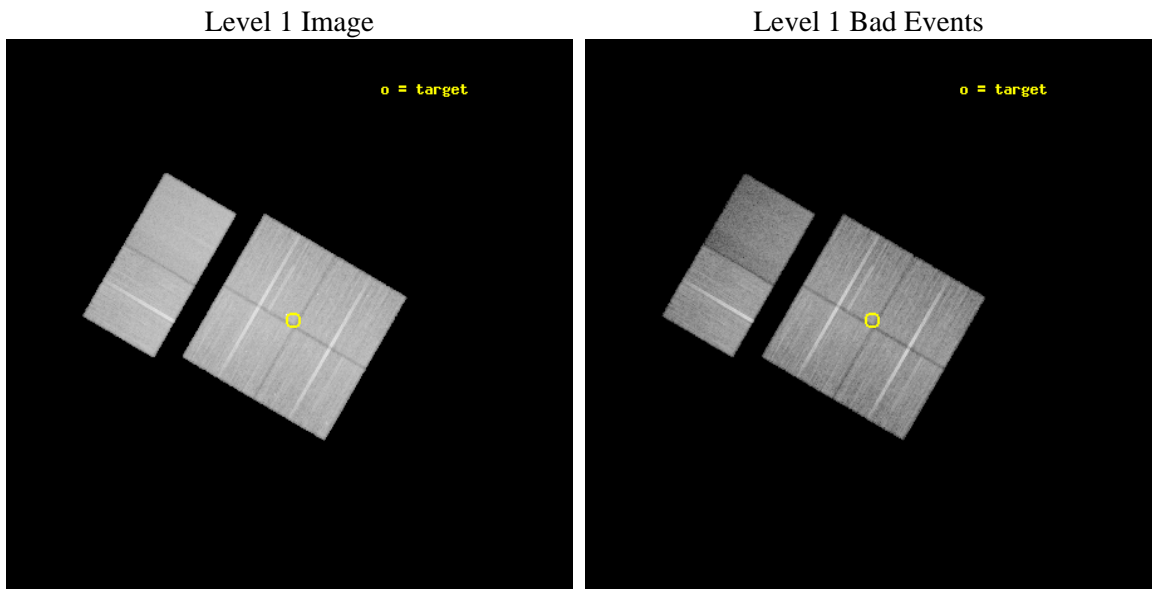
seq_num	900832	Sequence number
obs_id	9495	Observation id
title	The Great Nebula in Carina: Protoplanetary Disks to Starburst Galaxies	Proposal title
observer	Dr. Leisa Townsley	Principal investigator
object	Carina South Pillars Ptg 5	Source name
dtycycle	0	&#160
cycle	P	events from which exps? Prim/Second/Both
ra_targ	161.193333	Observer's specified target RA [deg]
dec_targ	-60.427917	Observer's specified target Dec [deg]
ra_nom	161.20540954802	Nominal RA [deg]
dec_nom	-60.433350975671	Nominal Dec [deg]
roll_nom	300.21919067538	Nominal Roll [deg]
revision	2	Processing version of data
ontime	31359.958892882	Sum of GTIs [s]
liveltime	30962.86021068	Livetime [s]
ontime0	31346.994941533	Sum of GTIs [s]
ontime1	31359.958892941	Sum of GTIs [s]
ontime2	31359.958872974	Sum of GTIs [s]
ontime3	31359.958892882	Sum of GTIs [s]
ontime6	31363.199883223	Sum of GTIs [s]
ontime7	31363.199883223	Sum of GTIs [s]
l2events	217121	Number of level 2 events



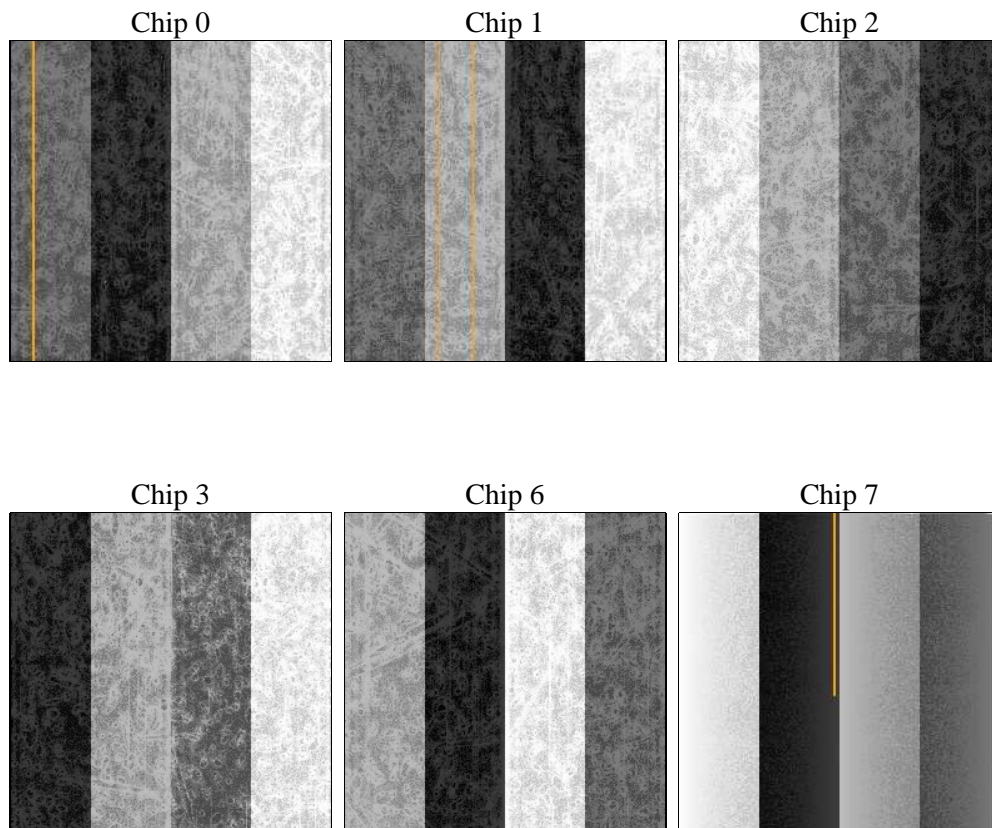
## 2 OBI

### 2.1 OBI

#### 2.1.1 Images



#### 2.1.2 Bias



### 2.1.3 Parameters

obi_num	0	Obi number	sched_exp_time	31200.000000	[s] Scheduled observation exposure time
ascdsver	8.4.4	Processing system revision	ontime	31359.958892882	Sum of GTIs [s]
caldsver	4.4.9	&#160	ontime0	31346.994941533	Sum of GTIs [s]
date	2012-05-13T13:02:06	Date and time of file creation	ontime1	31359.958892941	Sum of GTIs [s]
revision	2	Processing version of data	ontime2	31359.958872974	Sum of GTIs [s]
			ontime3	31359.958892882	Sum of GTIs [s]
			ontime6	31363.199883223	Sum of GTIs [s]
			ontime7	31363.199883223	Sum of GTIs [s]
			l1events	1389247	Number of level 1 events

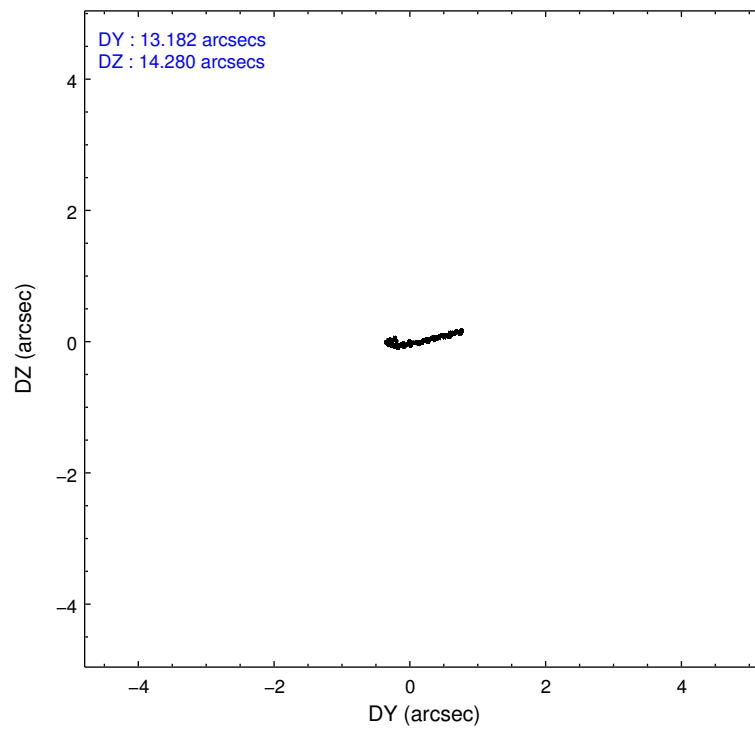
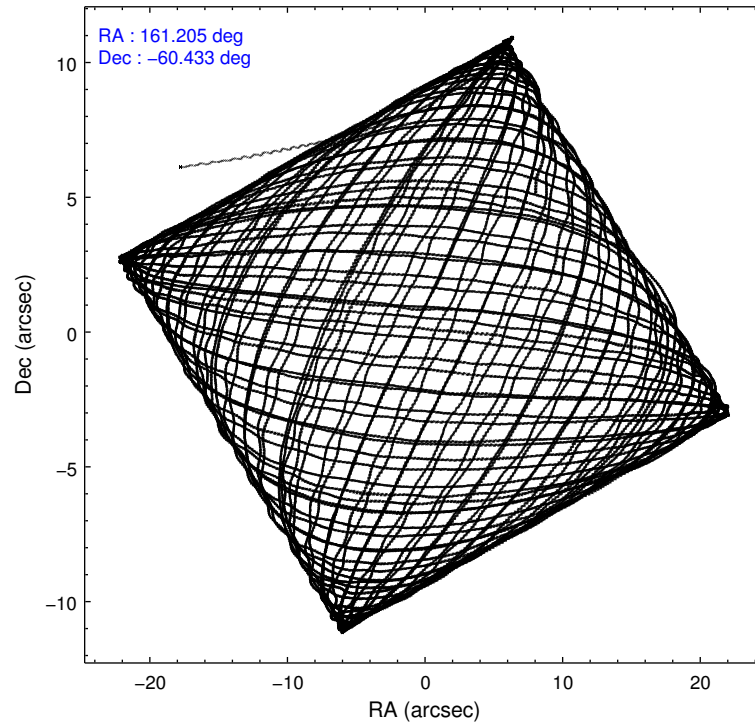
### 2.1.4 Events

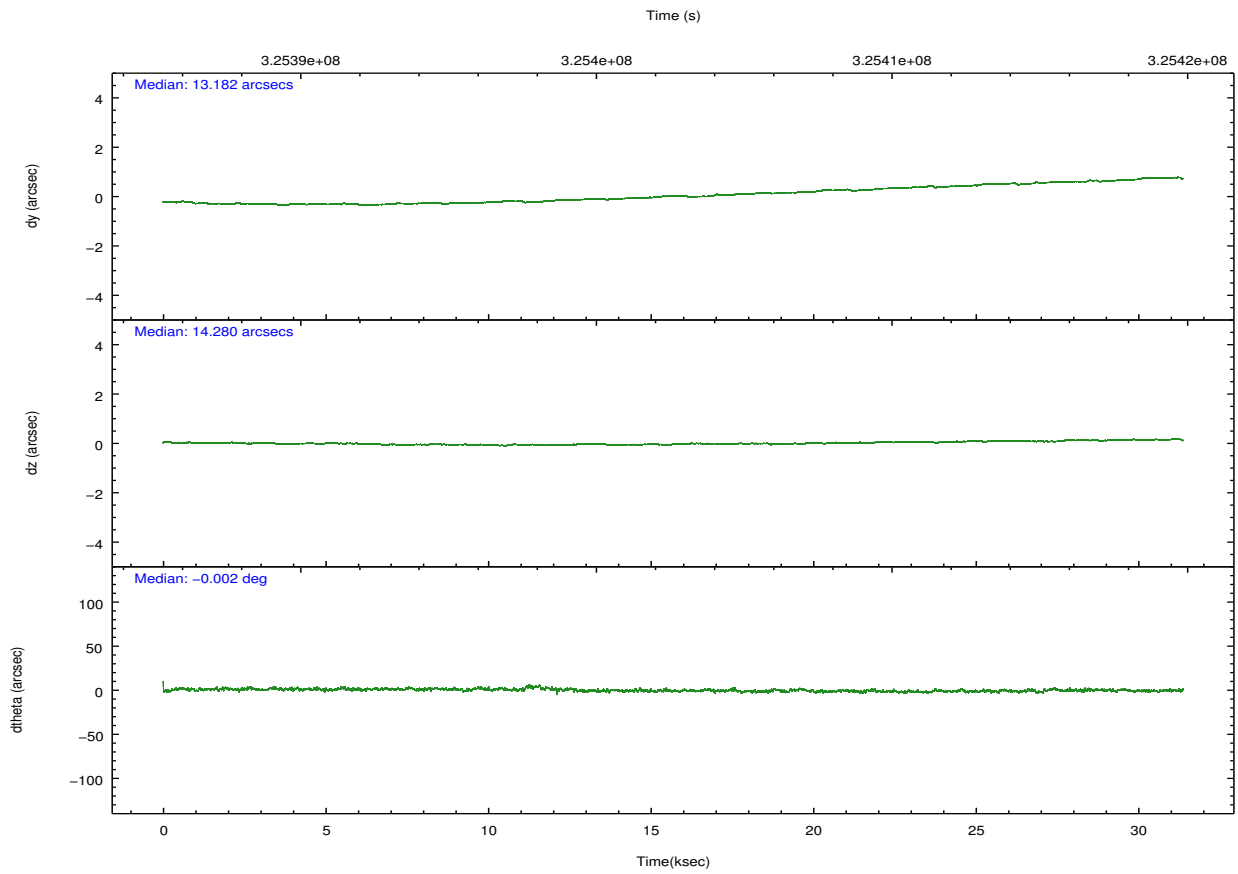
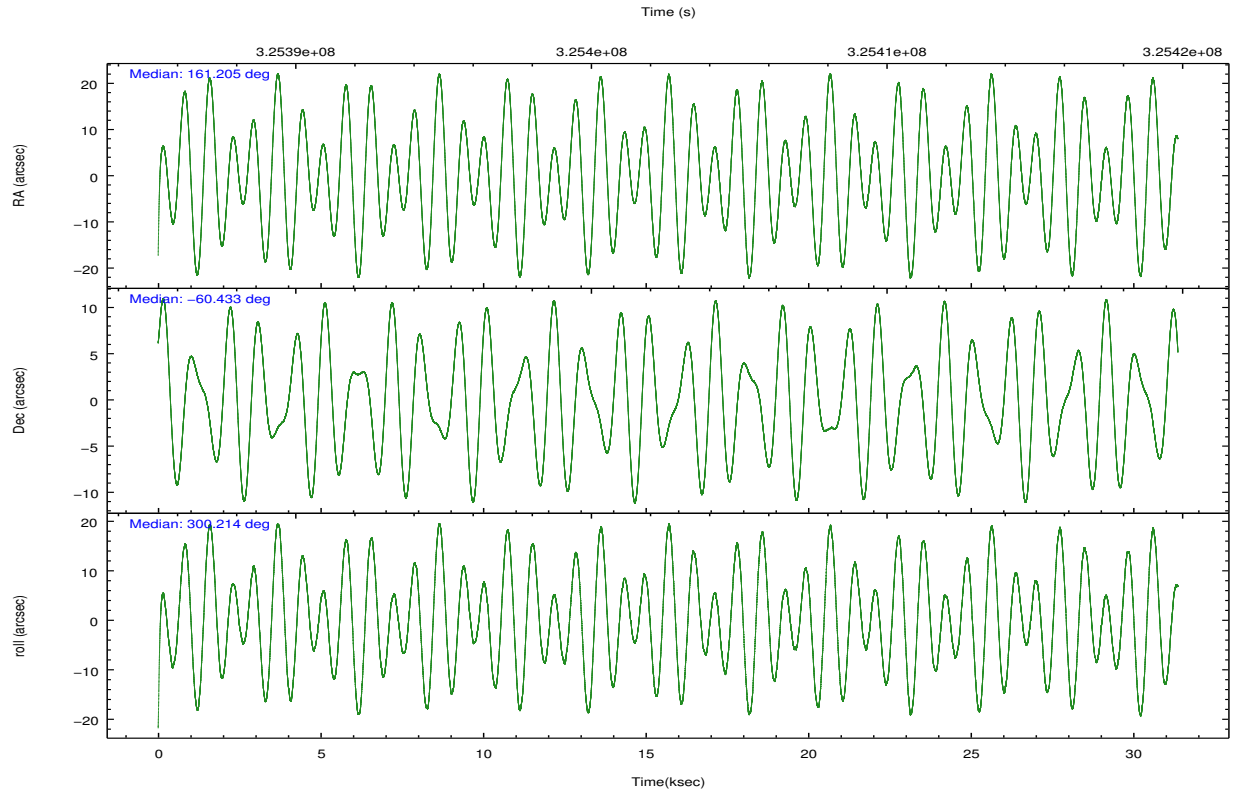
	ccd 0	ccd 1	ccd 2	ccd 3	ccd 6	ccd 7		ccd 0	ccd 1	ccd 2	ccd 3	ccd 6	ccd 7
level 1 events	218065	217275	248893	231775	245345	227894	grade 0 events	9859	11000	10441	10622	11119	12467
rejected events	193513	190367	223920	206934	218051	114610		4%	5%	4%	4%	4%	5%
rejected %	88%	87%	89%	89%	88%	50%	grade 1 events	132	151	170	169	141	364
								0%	0%	0%	0%	0%	0%
							grade 2 events	5759	5694	5802	5086	5800	24692
								2%	2%	2%	2%	2%	10%
							grade 3 events	2558	2820	2429	2462	2745	10888
								1%	1%	0%	1%	1%	4%
							grade 4 events	2417	2771	2467	2541	2673	10728
								1%	1%	0%	1%	1%	4%
							grade 5 events	6986	7679	6454	8300	8259	24297
								3%	3%	2%	3%	3%	10%
							grade 6 events	4157	4799	4028	4316	5140	55382
								1%	2%	1%	1%	2%	24%
							grade 7 events	186197	182361	217102	198279	209468	89076
								85%	83%	87%	85%	85%	39%

## 2.2 Compared Parameters

Parameter	Planned	Actual	Parameter	Planned	Actual
Instrument	ACIS	ACIS	Obspar format version number	7	7
Detector	ACIS-012367	ACIS-012367	Obspar file type	PREDICTED	ACTUAL
Grating	NONE	NONE	Obspar update status	NONE	UPDATED
Data mode	VFAINT	VFAINT	CCD I0 on	Y	Y
Observation mode	POINTING	POINTING	CCD I1 on	Y	Y
[deg] Pointing RA	161.156967	161.2054095480246	CCD I2 on	Y	Y
[deg] Pointing Dec	-60.419806	-60.43335097567141	CCD I3 on	Y	Y
[deg] Pointing Roll	299.968373	300.2191906753843	CCD S0 on	N	N
[mm] SIM focus pos	-0.782348	-0.7809083437167272	CCD S1 on	N	N
[mm] SIM defocus	0	0.001439871863259334	CCD S2 on	O1	Y
[mm] SIM translation stage pos	-233.592463	-233.5874344608287	CCD S3 on	O2	Y
[mm] SIM translation stage offset	0	-0.005018542100998502	CCD S4 on	N	N
[s] Observation start time (MET)	325387068.184000	325385886.25649	CCD S5 on	N	N
Observation start date	2008-04-24T01:16:43	2008-04-24T00:58:06	Number of optional ACIS chips dropped	0	0
[s] Observation end time (MET)	325418268.184000	325418754.93309	On-chip summing requested	N	N
Observation end date	2008-04-24T09:56:43	2008-04-24T10:05:54	Subarray requested	NONE	NONE
Read mode	TIMED	TIMED	Alternating exposures requested	N	N
			[s] Primary exposure time	0.000000	3.2

## 2.3 Aspect





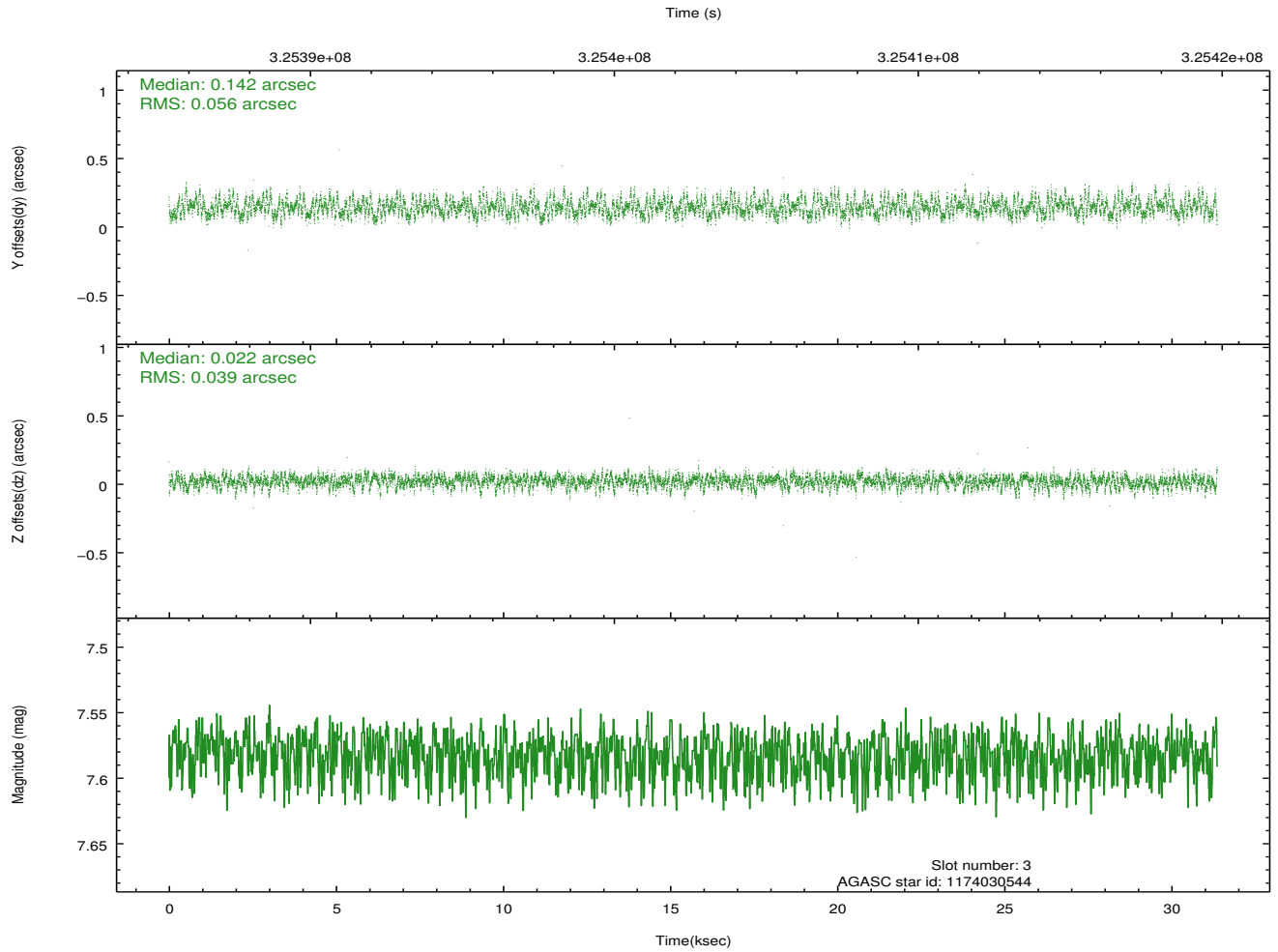
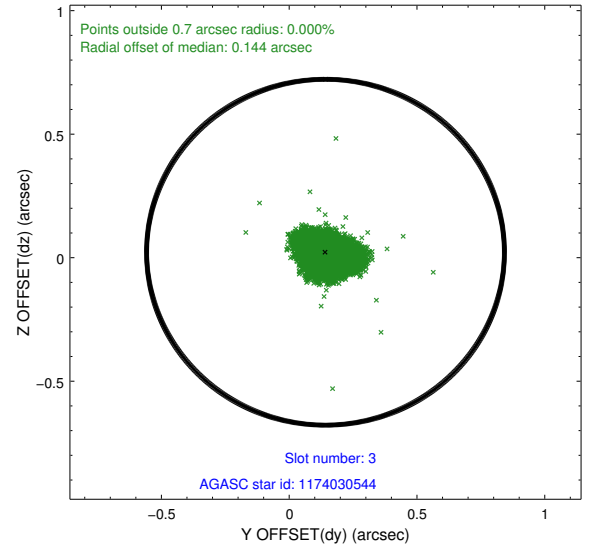
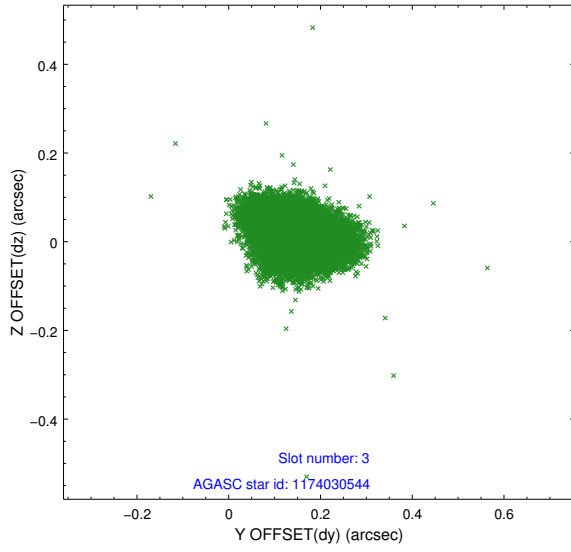
### Slot Statistics

slot	status	id	mag	n_pts	med_dy	med_dz	dr1	dr2	ra	dec	mean_y	mean_z
0	FID	ACIS-I-1	7.01	7651	-0.057	0.078	0.014	0.026	0.000000	0.000000	926.19	-837.80
1	FID	ACIS-I-2	6.92	7652	-0.133	-0.084	0.015	0.021	0.000000	0.000000	-767.94	-844.43
2	FID	ACIS-I-4	6.93	7647	0.090	0.072	0.012	0.021	0.000000	0.000000	2146.20	1061.96
3	GUIDE	1174030544	7.58	15296	0.142	0.022	0.072	0.116	160.765344	-60.986885	1429.38	-1613.04
4	GUIDE	1174031160	8.82	15290	-0.144	-0.124	0.064	0.105	162.483783	-60.757597	2239.53	1402.10
5	GUIDE	1174020184	8.15	15240	0.043	0.125	0.065	0.105	159.502388	-60.147833	-2296.22	-2097.97
6	GUIDE	1174012960	7.16	15299	-0.000	0.093	0.048	0.076	160.855674	-60.332270	-539.90	-308.38
7	GUIDE	1174033752	8.45	15299	-0.038	-0.112	0.080	0.126	162.418977	-60.164599	351.90	2406.02

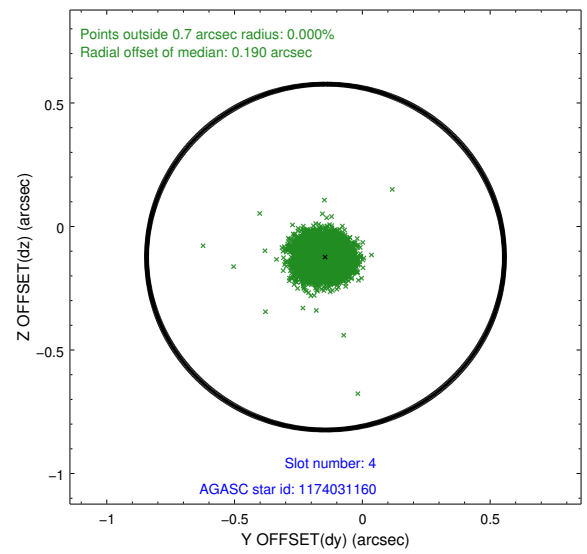
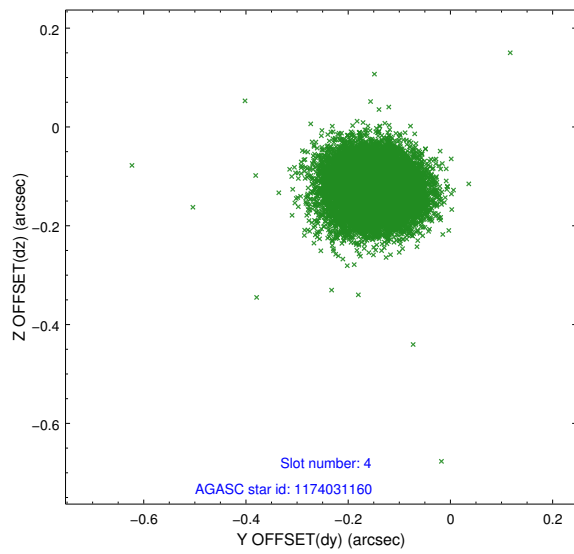
∞

## 2.4 Star Slots

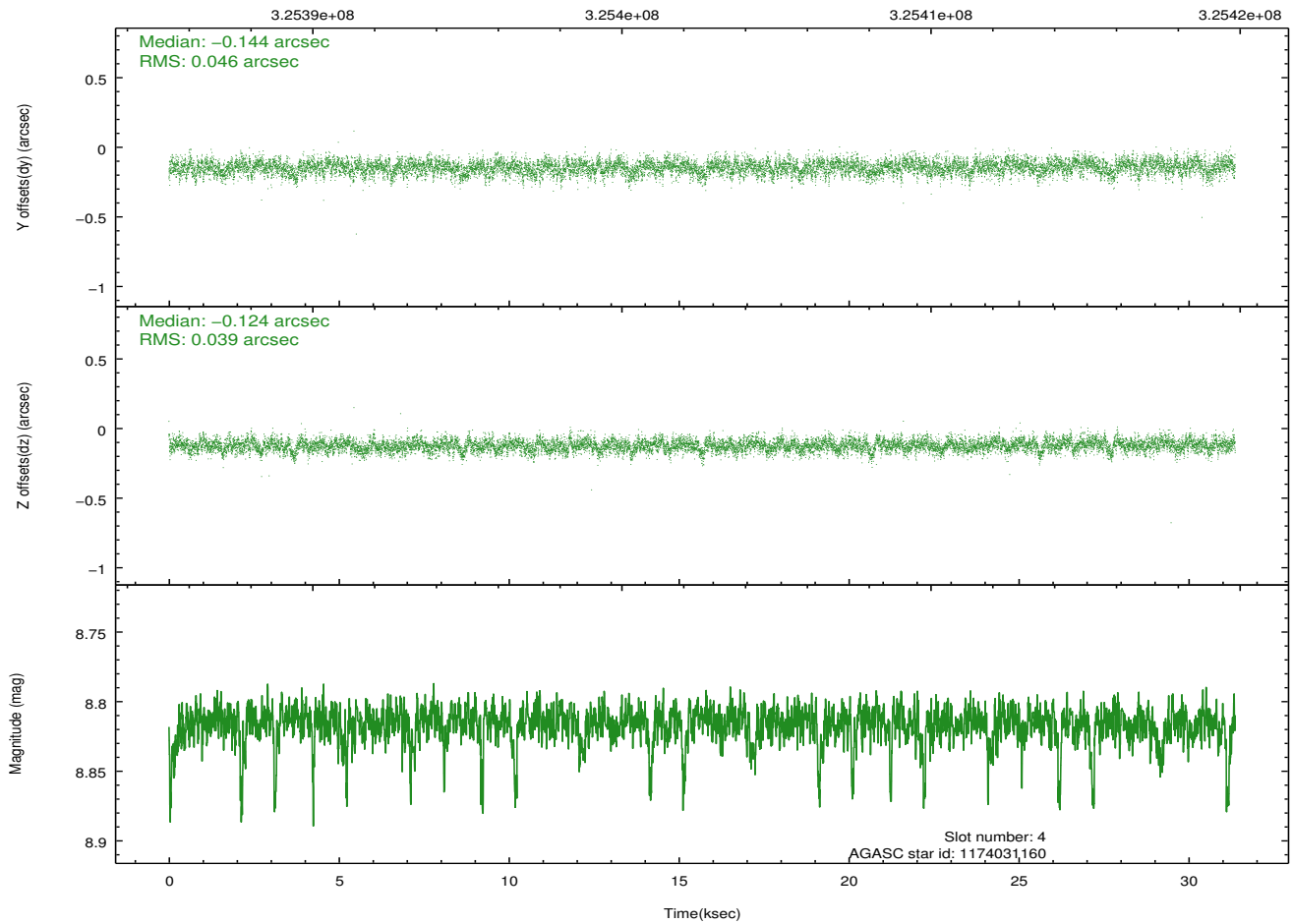
### 2.4.1 Slot 3



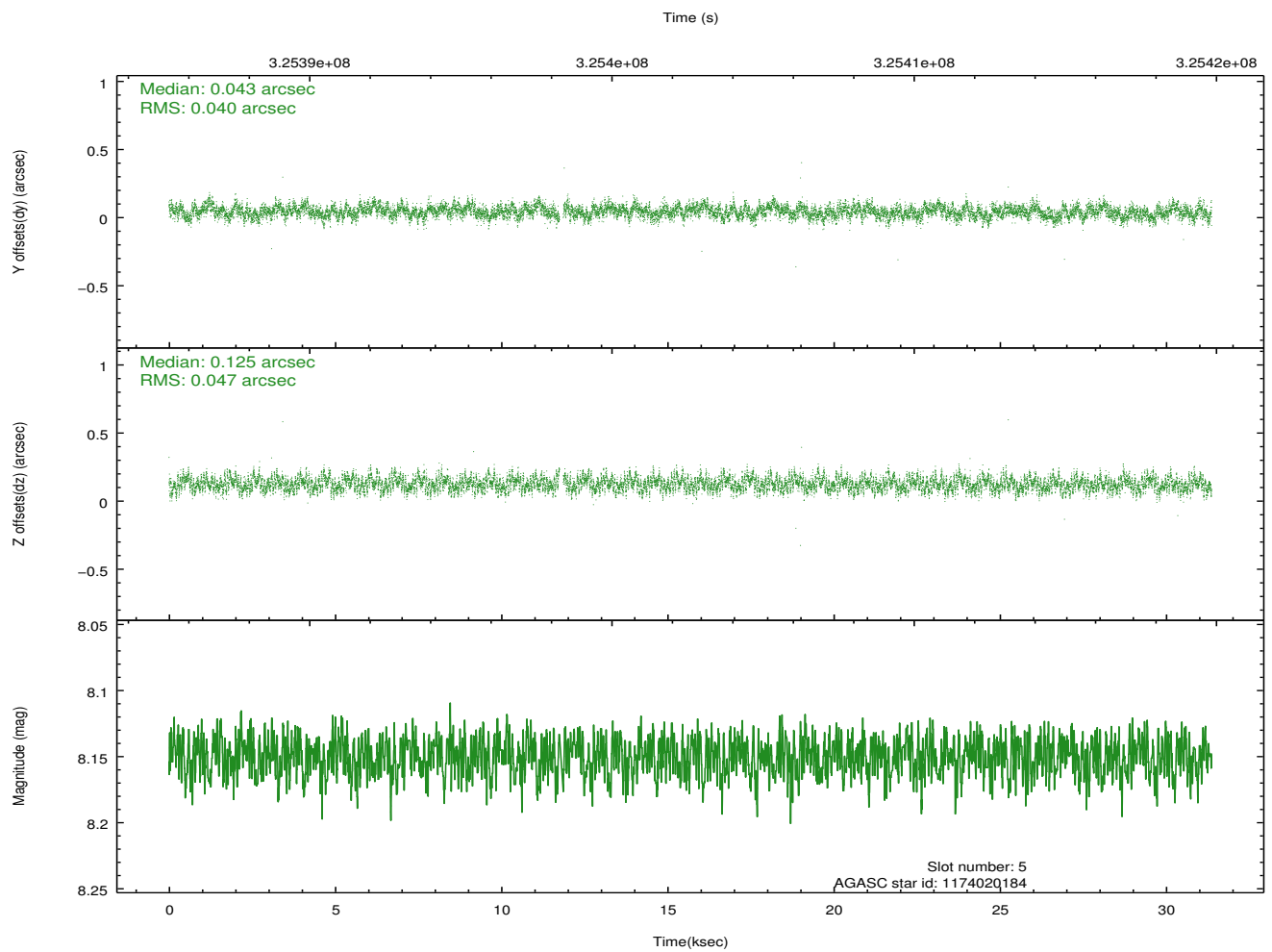
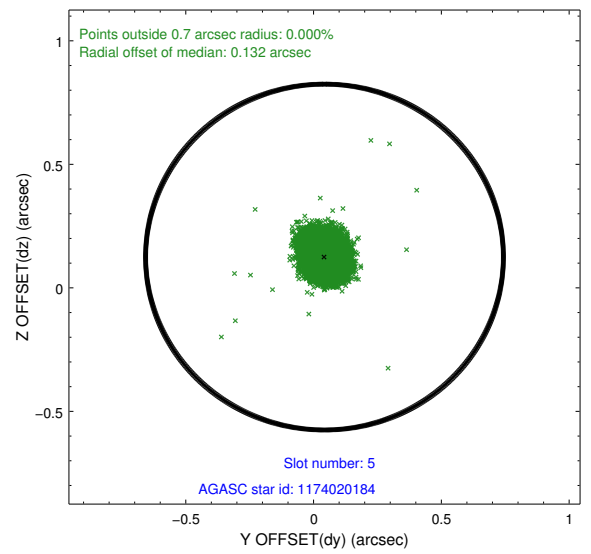
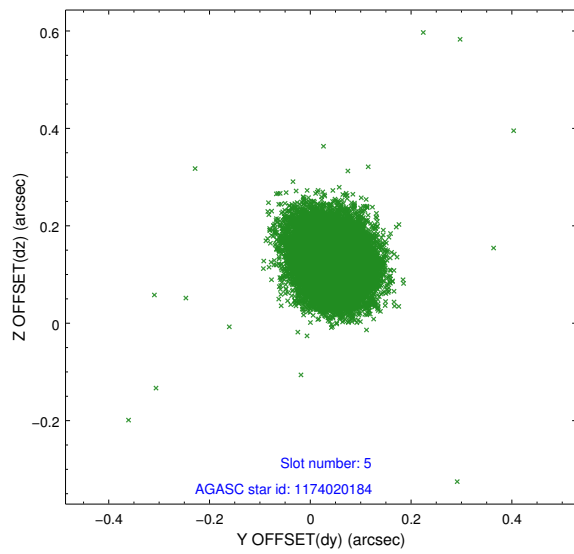
## 2.4.2 Slot 4



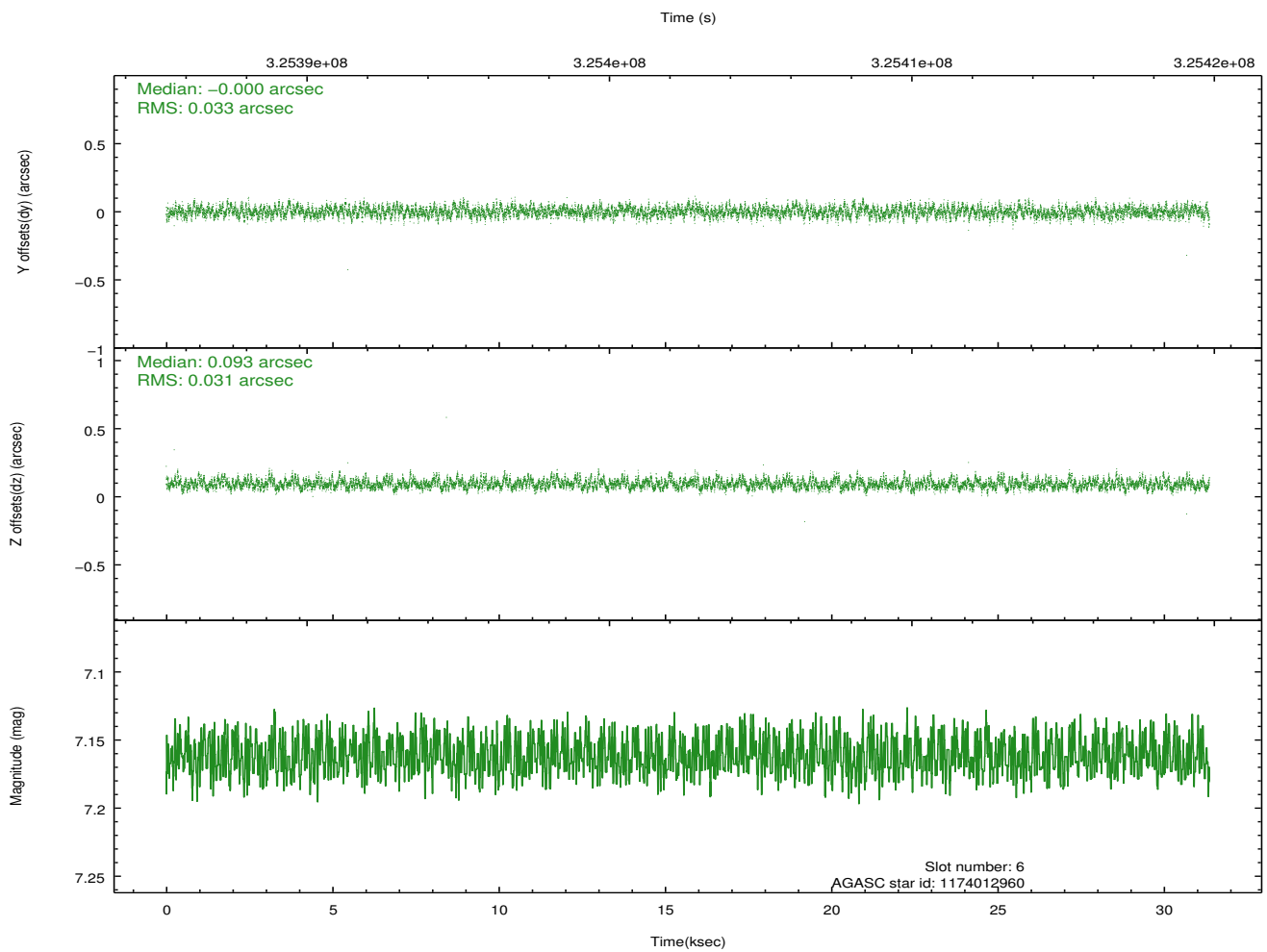
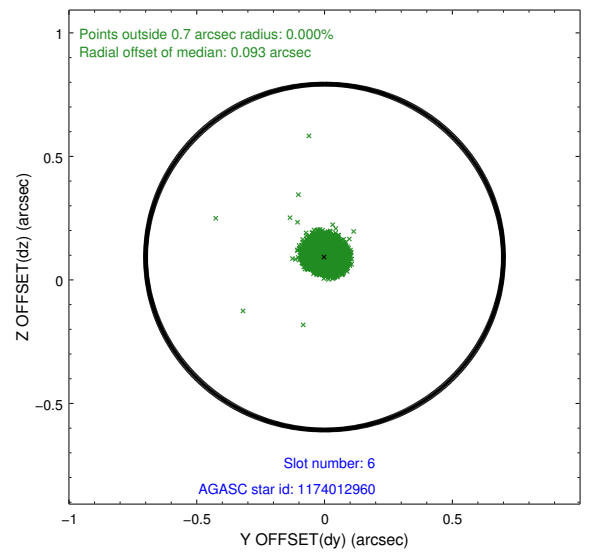
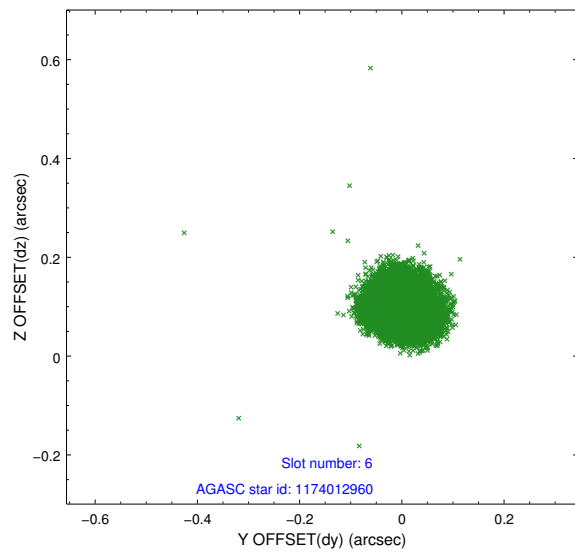
Time (s)



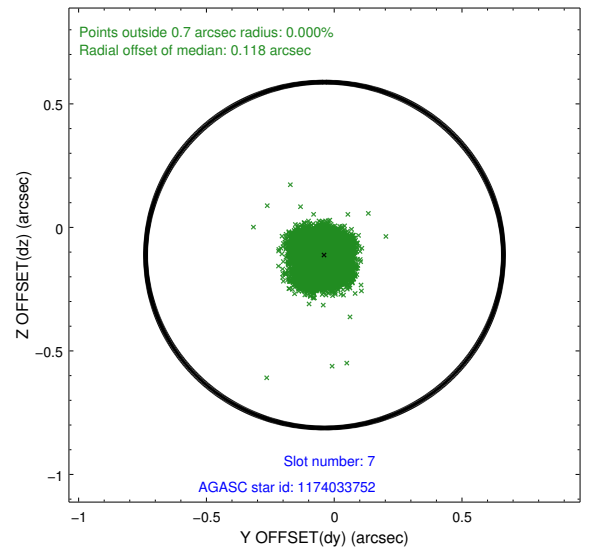
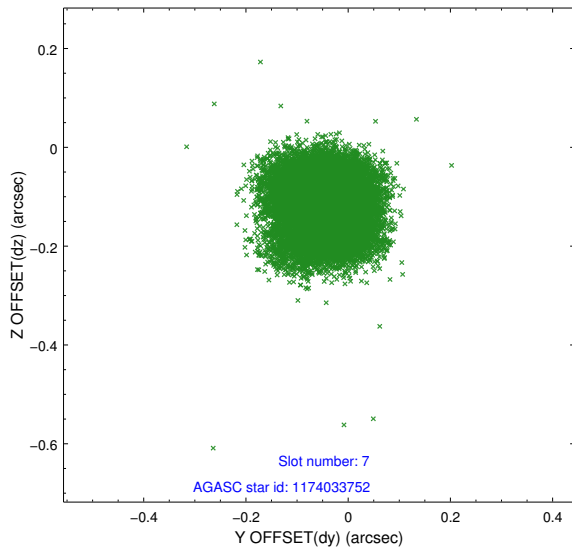
### 2.4.3 Slot 5



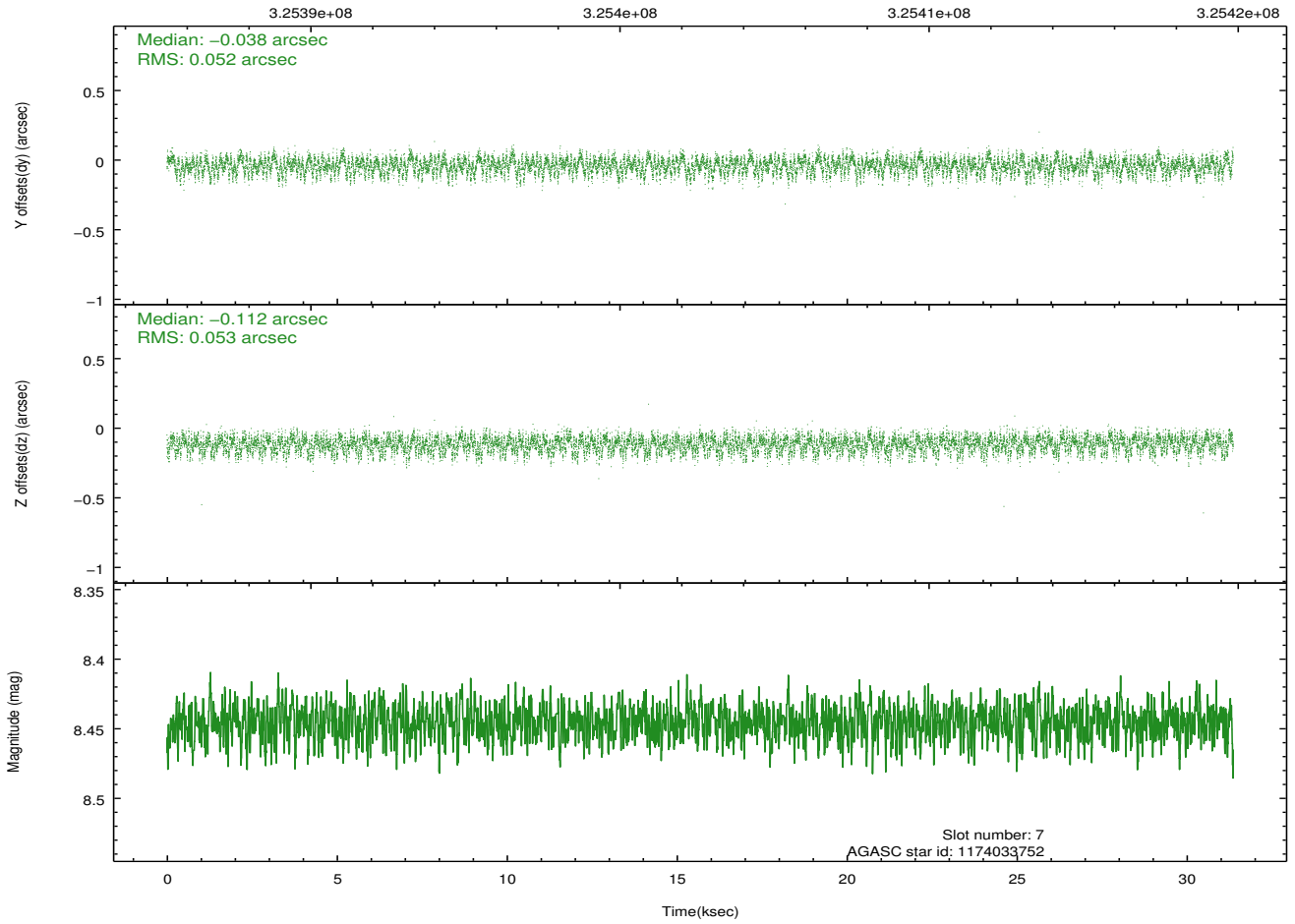
## 2.4.4 Slot 6



### 2.4.5 Slot 7

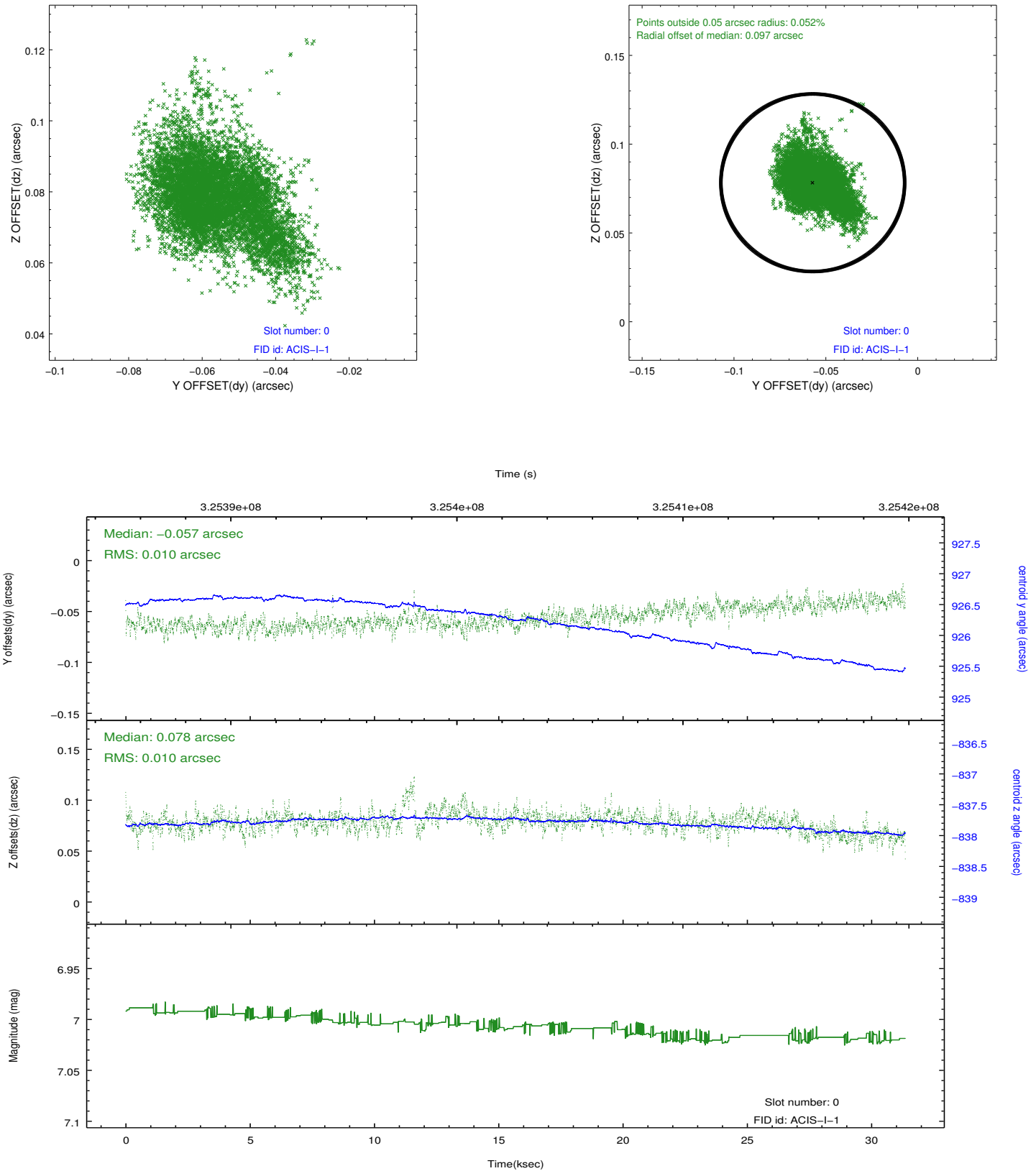


Time (s)

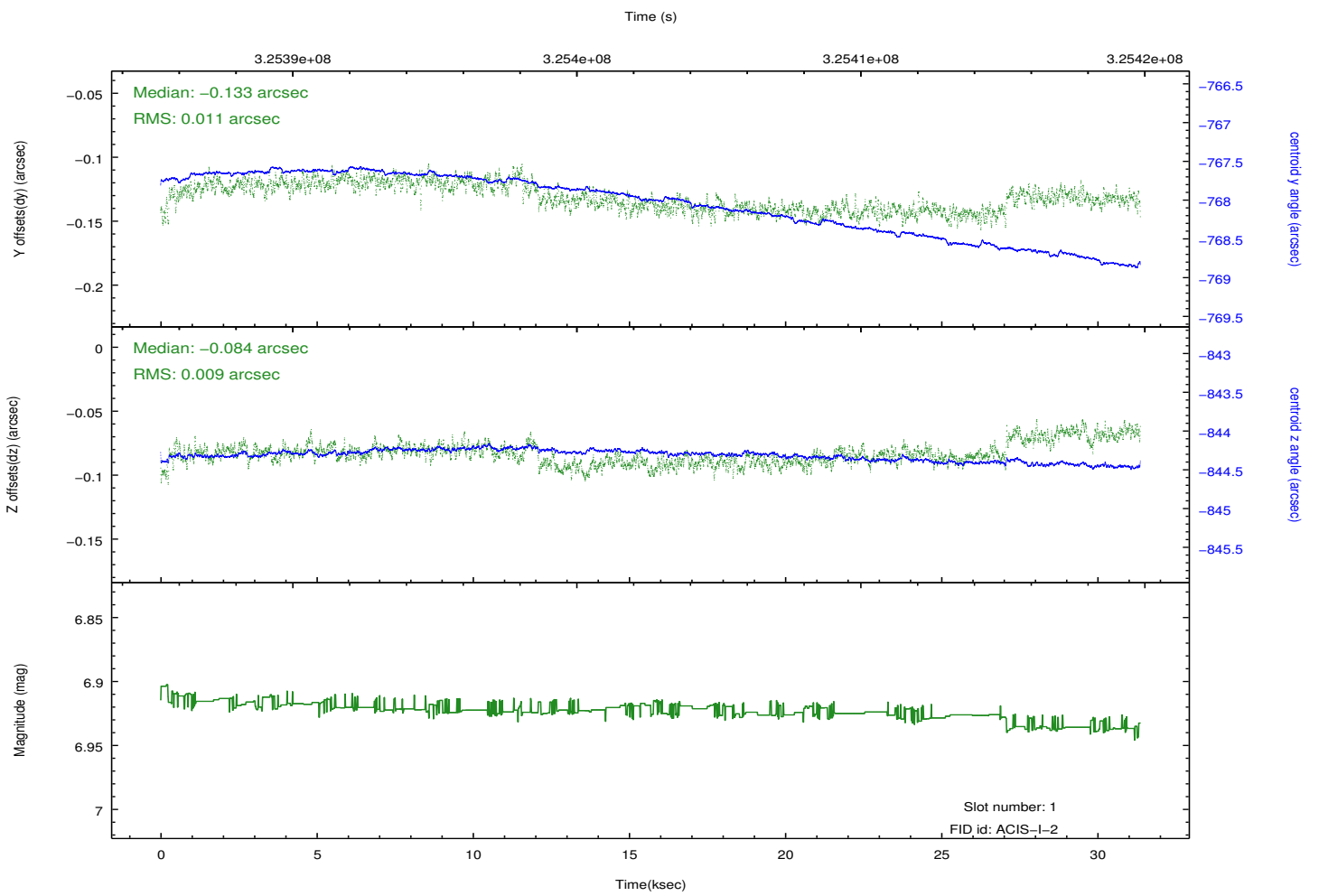
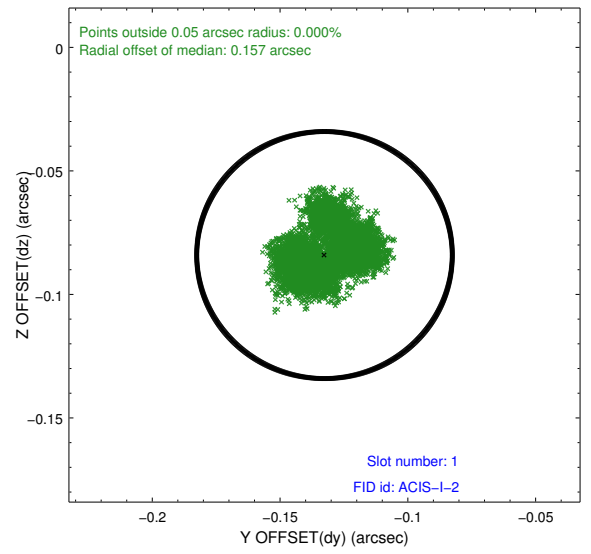
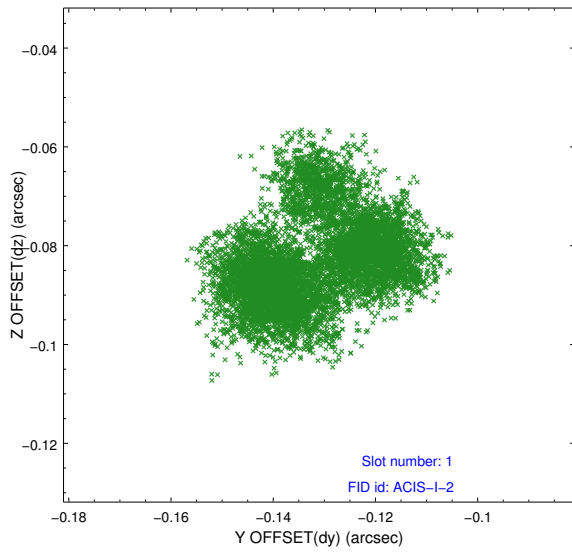


## 2.5 FID Slots

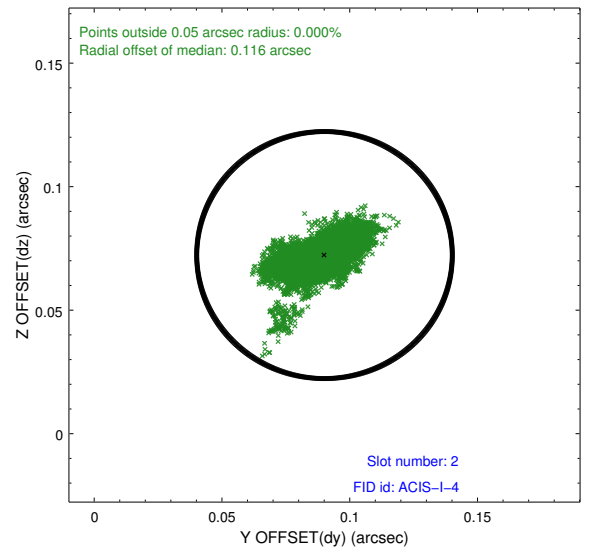
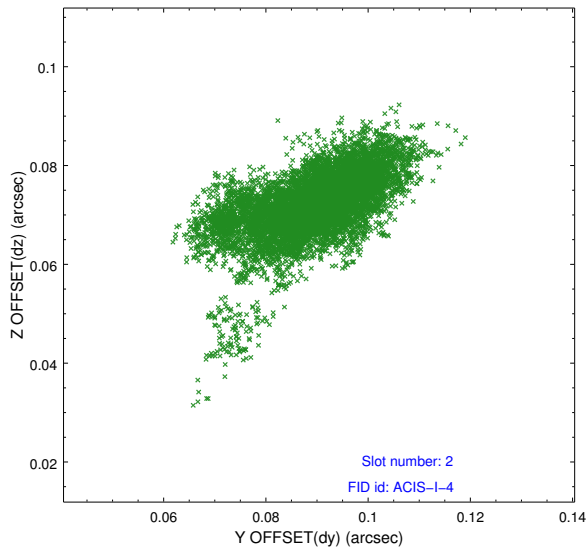
### 2.5.1 Slot 0



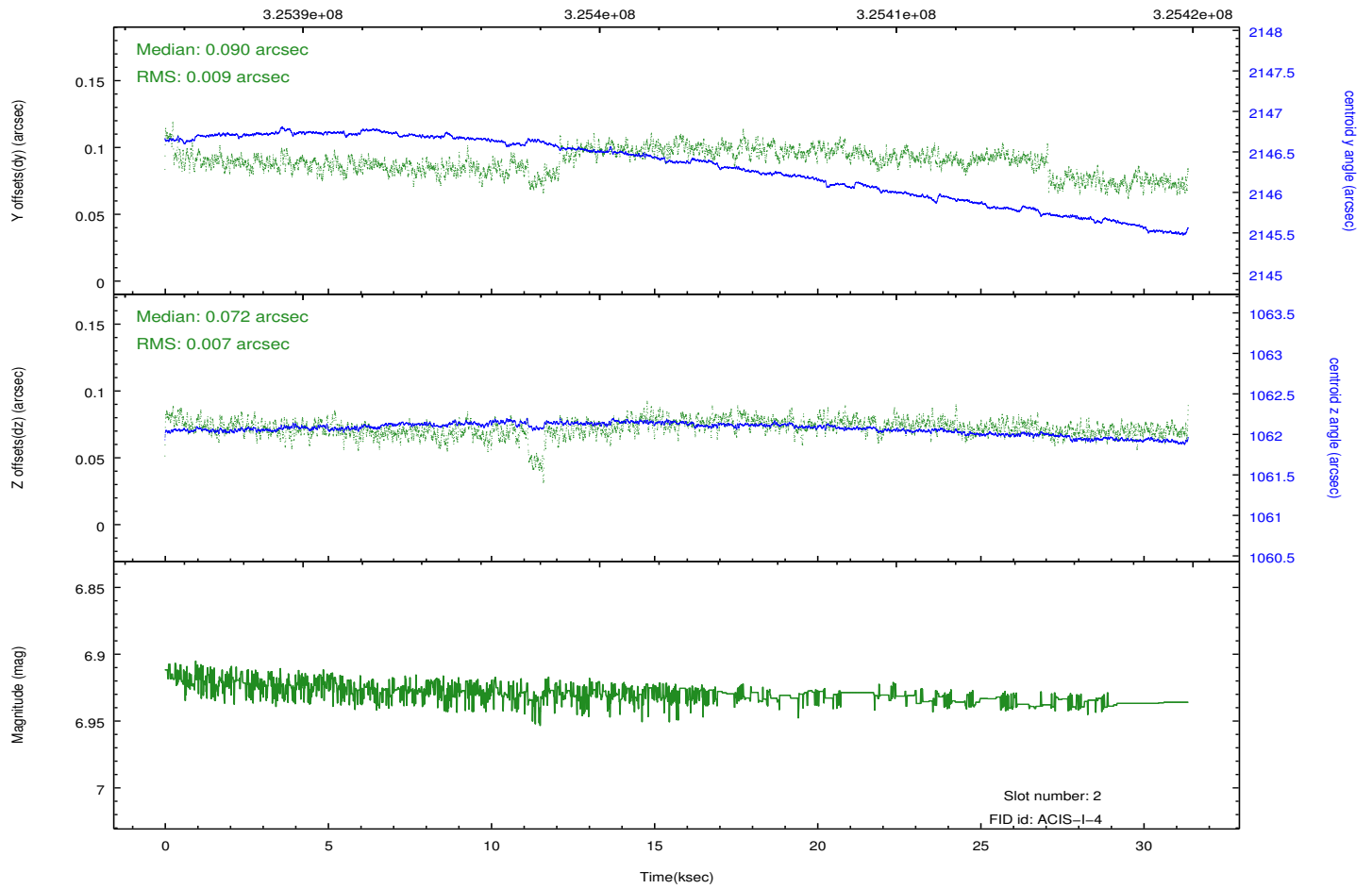
## 2.5.2 Slot 1



### 2.5.3 Slot 2



Time (s)



# A Summary

## A.1 Status

V&V Scientist	Jen Lauer
V&V Date (YYYY-MM-DD)	2012.05.15
V&V Edition	1
V&V Disposition and Status	OK
V&V Charge Time	31.3599588

## A.2 Comments