

V&V Reference Report

L2 ASCDS Version : 8.4.4

Observation 9515 - L2 Version 2
Chandra X-Ray Center

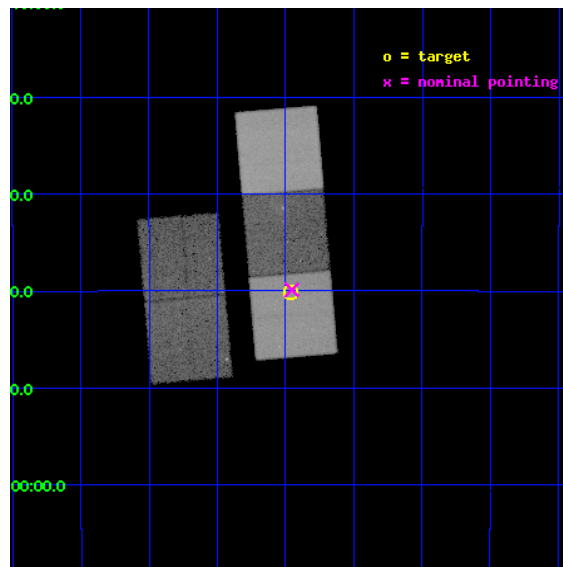
L2 Processing Date : May 19 2012

Contents

1	Front	2
2	OBI	3
2.1	OBI	3
2.1.1	Images	3
2.1.2	Bias	3
2.1.3	Parameters	4
2.1.4	Events	4
2.2	Compared Parameters	5
2.3	Aspect	6
2.4	Star Slots	9
2.4.1	Slot 3	9
2.4.2	Slot 4	10
2.4.3	Slot 5	11
2.4.4	Slot 6	12
2.4.5	Slot 7	13
2.5	FID Slots	14
2.5.1	Slot 0	14
2.5.2	Slot 1	15
2.5.3	Slot 2	16
A	Summary	17
A.1	Status	17
A.2	Comments	17

1 Front

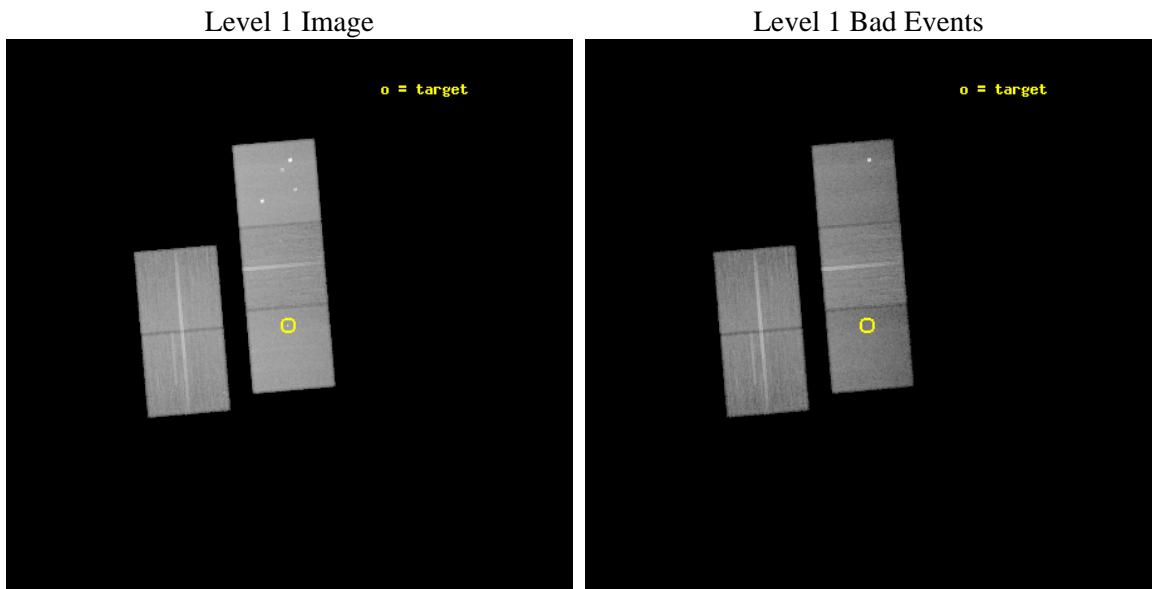
seq_num	600656	Sequence number
obs_id	9515	Observation id
title	Dust-to-gas Ratio of High Redshift Galaxies	Proposal title
observer	Prof. Xinyu Dai	Principal investigator
object	HE0047-1756	Source name
dtcycle	0	
cycle	P	events from which exps? Prim/Second/Both
ra_targ	12.615833	Observer's specified target RA [deg]
dec_targ	-17.669111	Observer's specified target Dec [deg]
ra_nom	12.61352714447	Nominal RA [deg]
dec_nom	-17.664792932593	Nominal Dec [deg]
roll_nom	85.129366769622	Nominal Roll [deg]
revision	2	Processing version of data
ontime	34112.400262356	Sum of GTIs [s]
livetime	33666.696639744	Livetime [s]
ontime2	34106.118241847	Sum of GTIs [s]
ontime3	34109.259271979	Sum of GTIs [s]
ontime5	34112.400262356	Sum of GTIs [s]
ontime6	34109.259262025	Sum of GTIs [s]
ontime7	34112.400262356	Sum of GTIs [s]
l2events	399626	Number of level 2 events



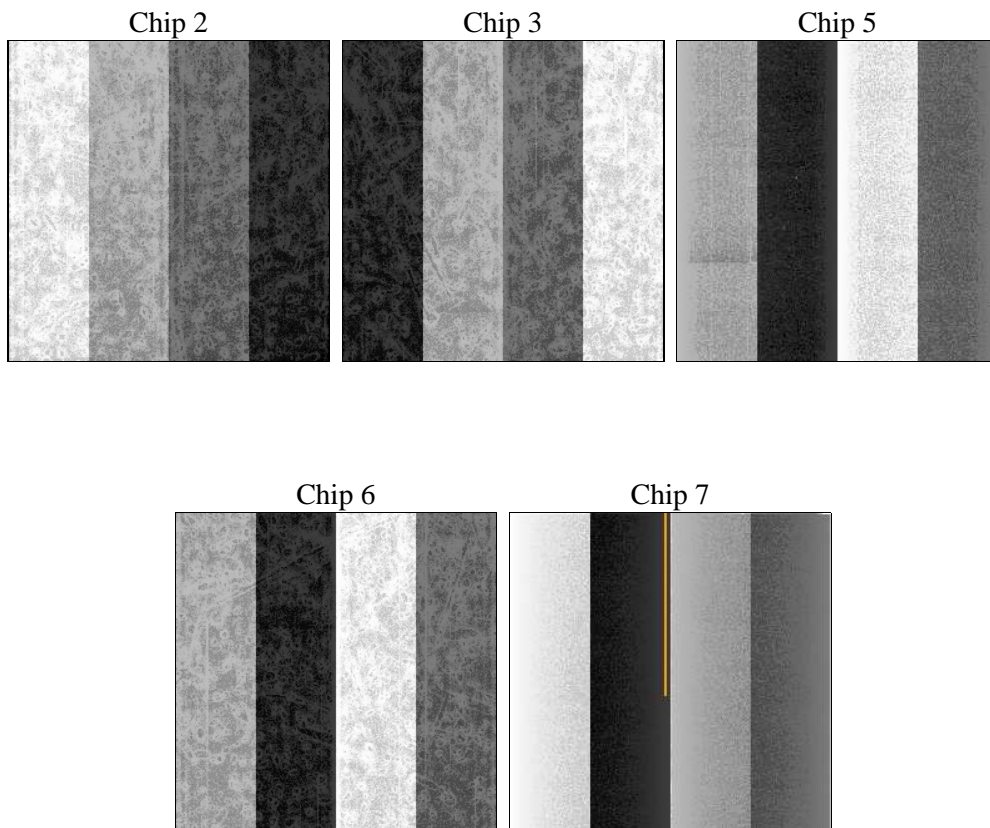
2 OBI

2.1 OBI

2.1.1 Images



2.1.2 Bias



2.1.3 Parameters

obi_num	1	Obi number	sched_exp_time	33927.000000	[s] Scheduled observation exposure time
ascdsver	8.4.4	Processing system revision	ontime	34112.400262356	Sum of GTIs [s]
caldbver	4.4.9	 	ontime2	34106.118241847	Sum of GTIs [s]
date	2012-05-19T22:05:41	Date and time of file creation	ontime3	34109.259271979	Sum of GTIs [s]
revision	2	Processing version of data	ontime5	34112.400262356	Sum of GTIs [s]
			ontime6	34109.259262025	Sum of GTIs [s]
			ontime7	34112.400262356	Sum of GTIs [s]
			l1events	1604058	Number of level 1 events

2.1.4 Events

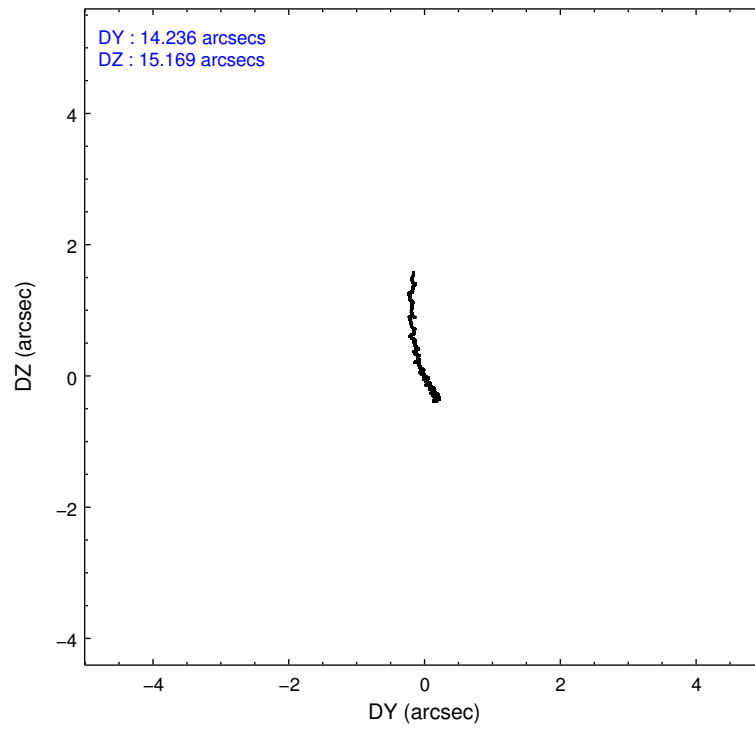
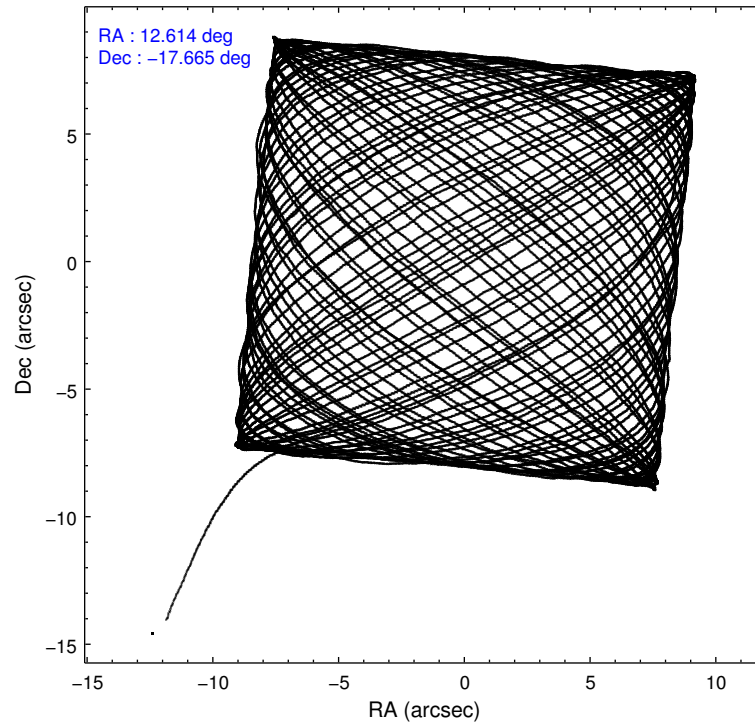
	ccd 2	ccd 3	ccd 5	ccd 6	ccd 7
level 1 events	289907	281143	417354	290327	325327
rejected events	262613	254518	209859	259800	178621
rejected %	90%	90%	50%	89%	54%

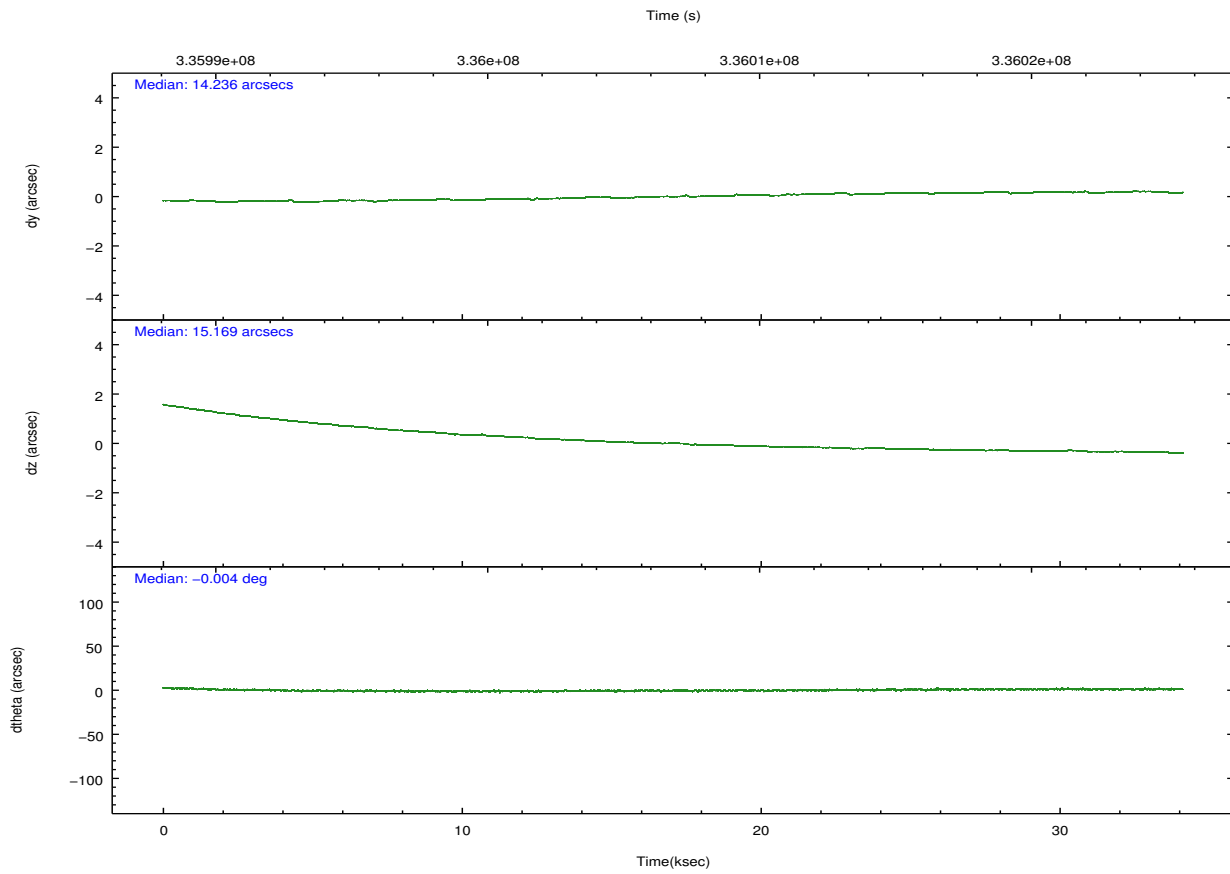
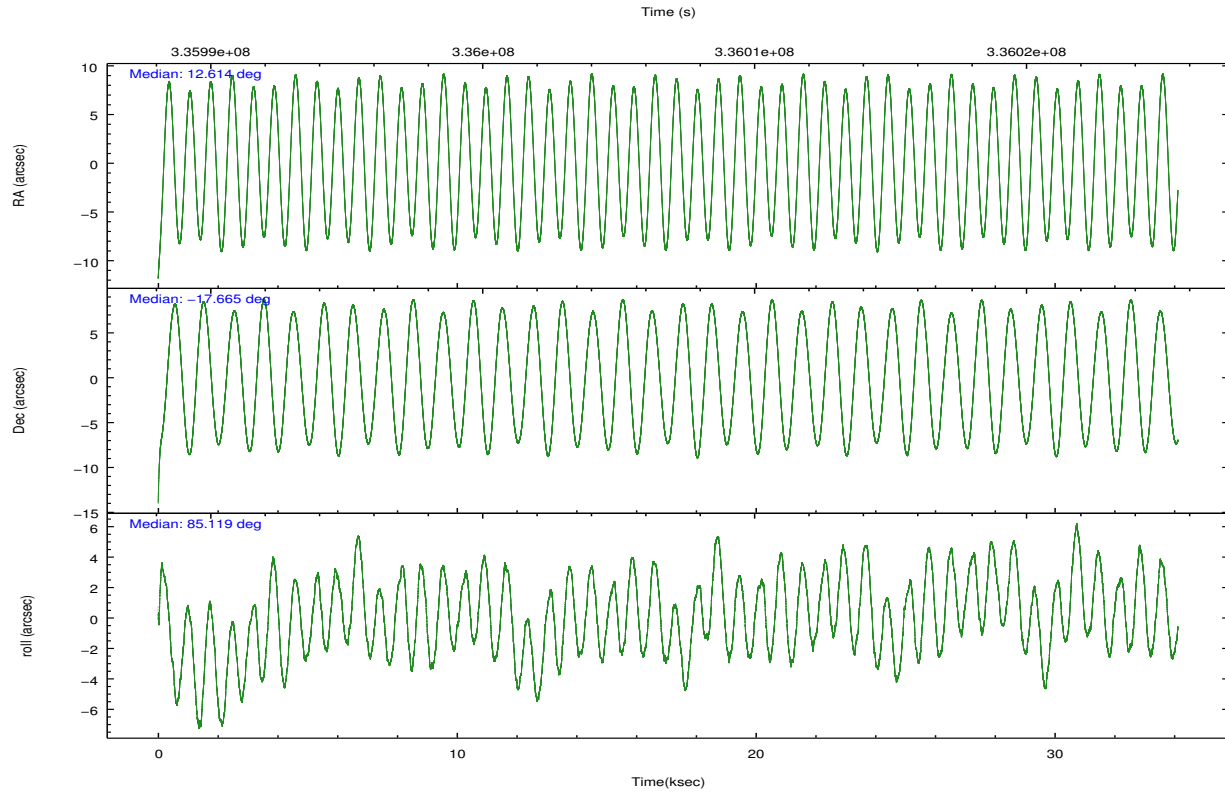
	ccd 2	ccd 3	ccd 5	ccd 6	ccd 7
grade 0 events	10063	9539	26380	11022	13886
	3%	3%	6%	3%	4%
grade 1 events	178	181	889	153	439
	0%	0%	0%	0%	0%
grade 2 events	6471	5861	60461	6920	30024
	2%	2%	14%	2%	9%
grade 3 events	2970	3032	11181	3199	13575
	1%	1%	2%	1%	4%
grade 4 events	3061	3008	8210	3248	13373
	1%	1%	1%	1%	4%
grade 5 events	9192	11427	34575	11852	33964
	3%	4%	8%	4%	10%
grade 6 events	5071	5489	103654	6499	77470
	1%	1%	24%	2%	23%
grade 7 events	252901	242606	172004	247434	142596
	87%	86%	41%	85%	43%

2.2 Compared Parameters

Parameter	Planned	Actual	Parameter	Planned	Actual
Instrument	ACIS	ACIS	Obspar format version number	7	7
Detector	ACIS-23567	ACIS-23567	Obspar file type	PREDICTED	ACTUAL
Grating	NONE	NONE	Obspar update status	NONE	UPDATED
Data mode	VFAINT	VFAINT	Number of optional ACIS chips dropped	0	0
Observation mode	POINTING	POINTING	On-chip summing requested	N	N
[deg] Pointing RA	12.626077	12.61352714447048	Subarray requested	NONE	NONE
[deg] Pointing Dec	-17.689378	-17.66479293259297	Alternating exposures requested	N	N
[deg] Pointing Roll	84.976548	85.1293667696219	[s] Primary exposure time	0.000000	3.1
[mm] SIM focus pos	-0.684267	-0.6828225247311905			
[mm] SIM defocus	0	0.001444936568705701			
[mm] SIM translation stage pos	-190.132523	-190.1400660498719			
[mm] SIM translation stage offset	0	0.00754346686406393			
[s] Observation start time (MET)	335989943.184000	335988750.4847			
Observation start date	2008-08-24T18:31:18	2008-08-24T18:12:30			
[s] Observation end time (MET)	336023870.184000	336024797.68647			
Observation end date	2008-08-25T03:56:45	2008-08-25T04:13:17			
Read mode	TIMED	TIMED			

2.3 Aspect



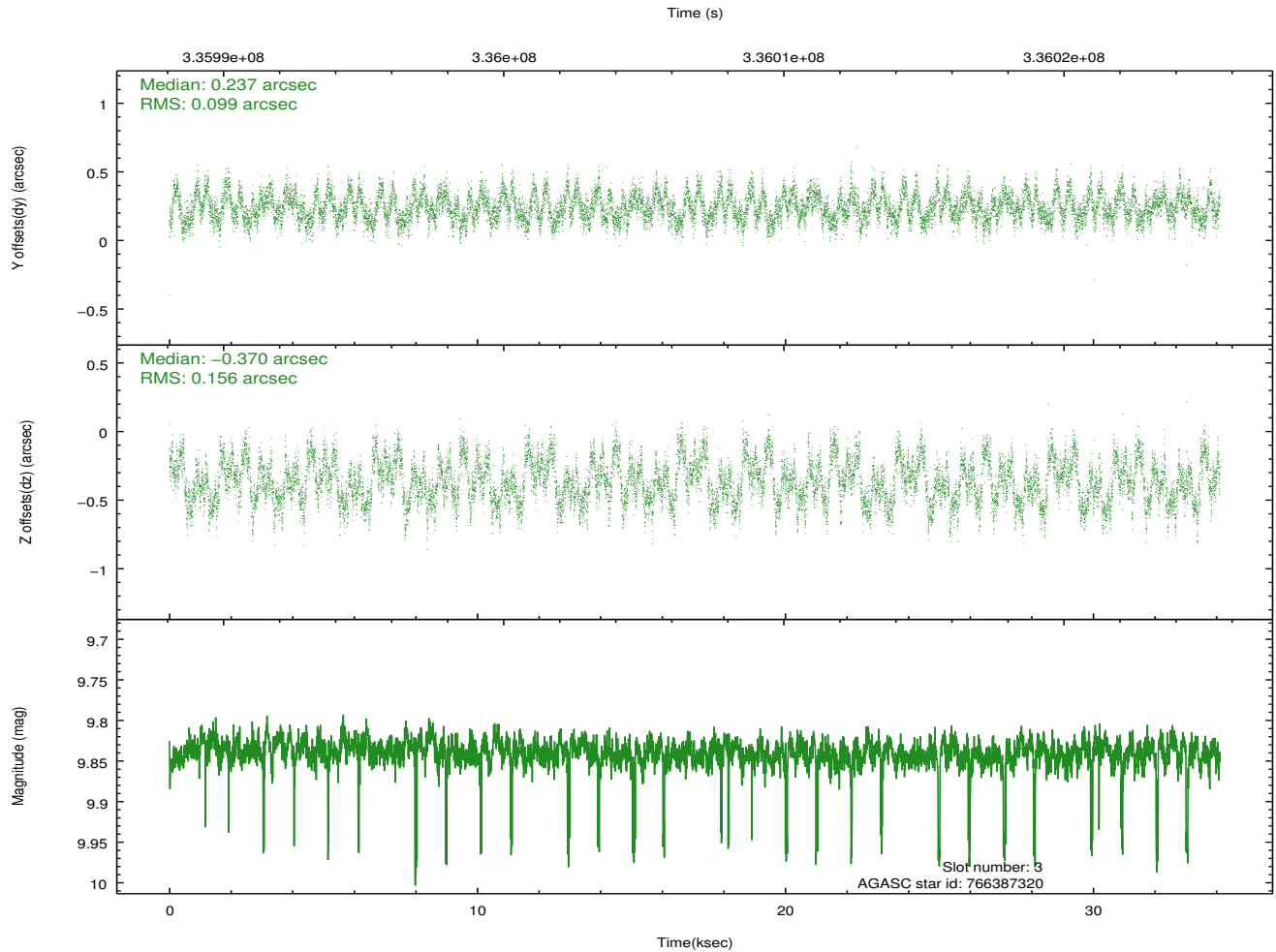
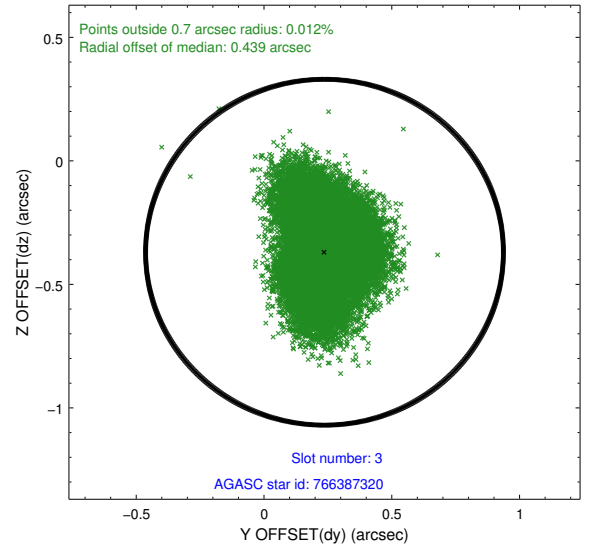
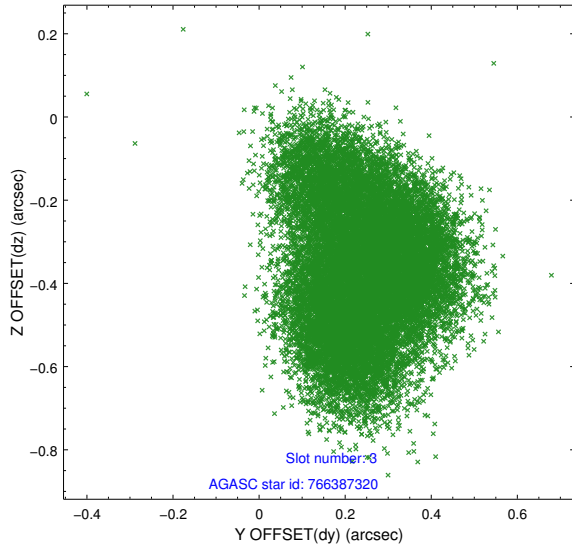


Slot Statistics

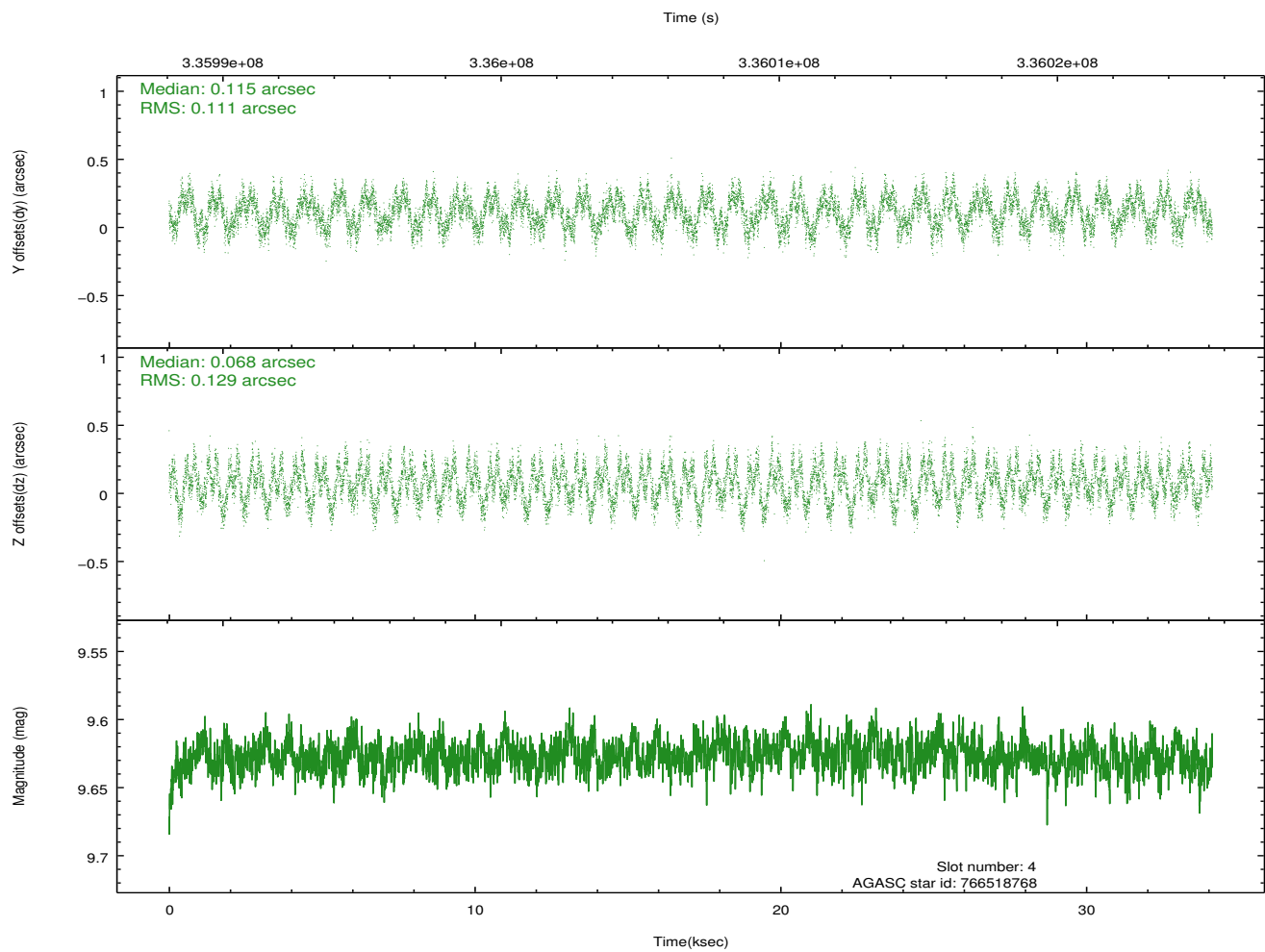
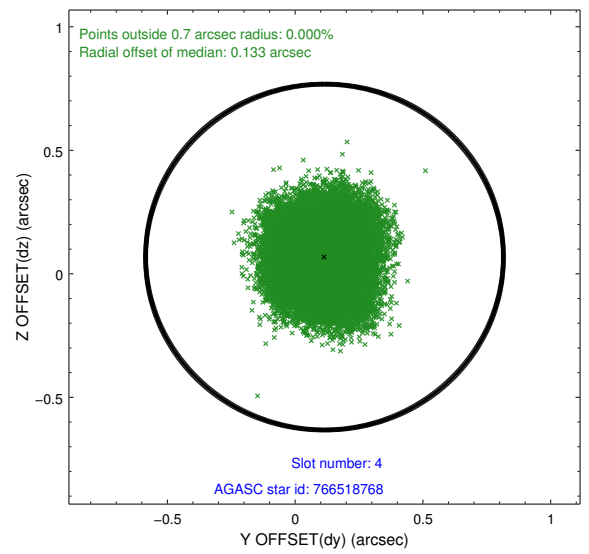
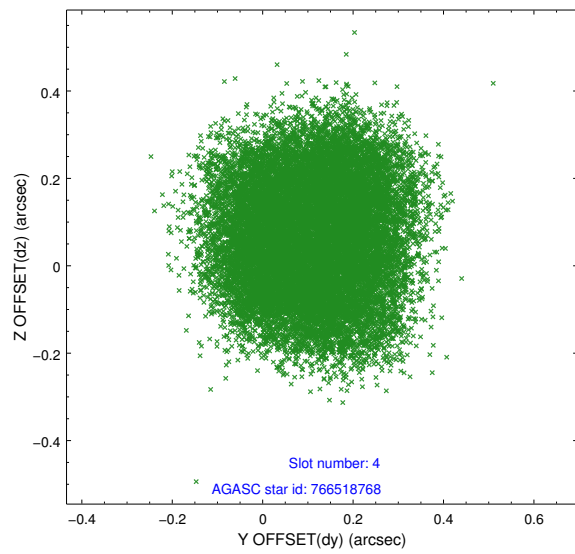
slot	status	id	mag	n_pts	med_dy	med_dz	dr1	dr2	ra	dec	mean_y	mean_z
0	FID	ACIS-S-2	6.90	8322	-0.018	-0.023	0.011	0.018	0.000000	0.000000	-767.19	-1736.76
1	FID	ACIS-S-5	7.02	8322	-0.102	-0.020	0.010	0.019	0.000000	0.000000	-1820.42	165.16
2	FID	ACIS-S-6	7.12	8319	0.092	0.049	0.010	0.015	0.000000	0.000000	394.47	809.20
3	GUIDE	766387320	9.84	16538	0.237	-0.370	0.199	0.311	11.970659	-17.763265	-465.46	2214.37
4	GUIDE	766518768	9.63	16613	0.115	0.068	0.187	0.272	13.001775	-17.753503	-117.76	-1303.22
5	GUIDE	766518784	10.03	16615	-0.112	0.146	0.201	0.322	12.942224	-17.074228	2300.84	-889.43
6	GUIDE	766520264	7.93	16638	-0.117	0.288	0.076	0.123	13.282391	-17.651776	328.92	-2230.96
7	GUIDE	766521200	7.72	16642	-0.120	-0.137	0.081	0.120	12.183084	-17.547132	375.06	1558.85

2.4 Star Slots

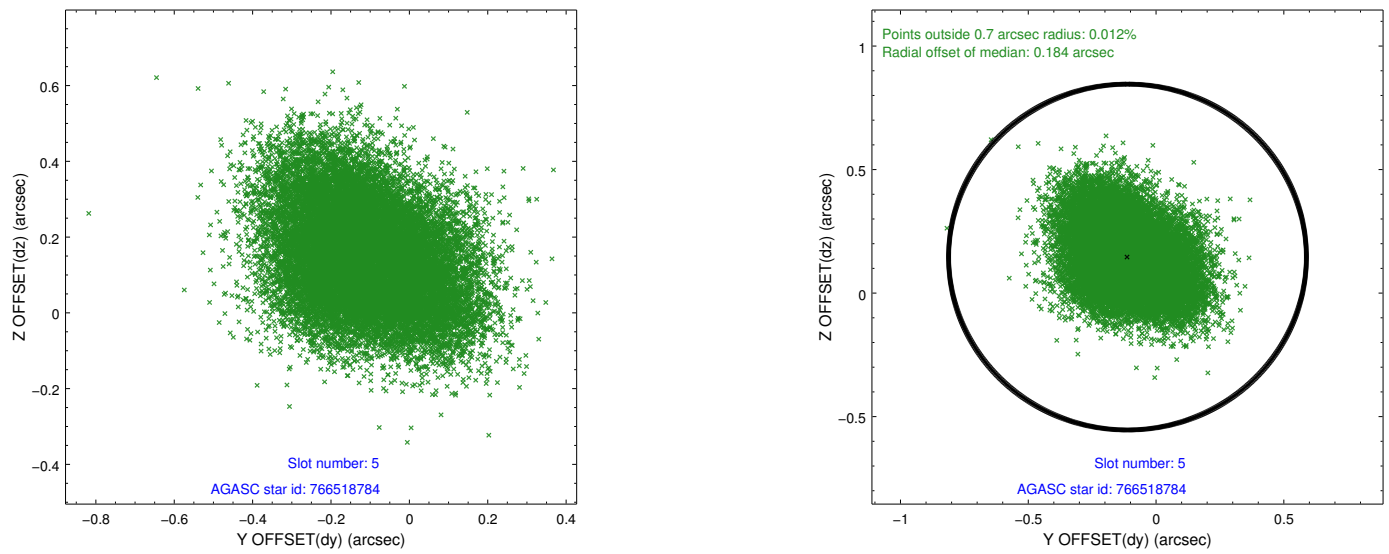
2.4.1 Slot 3



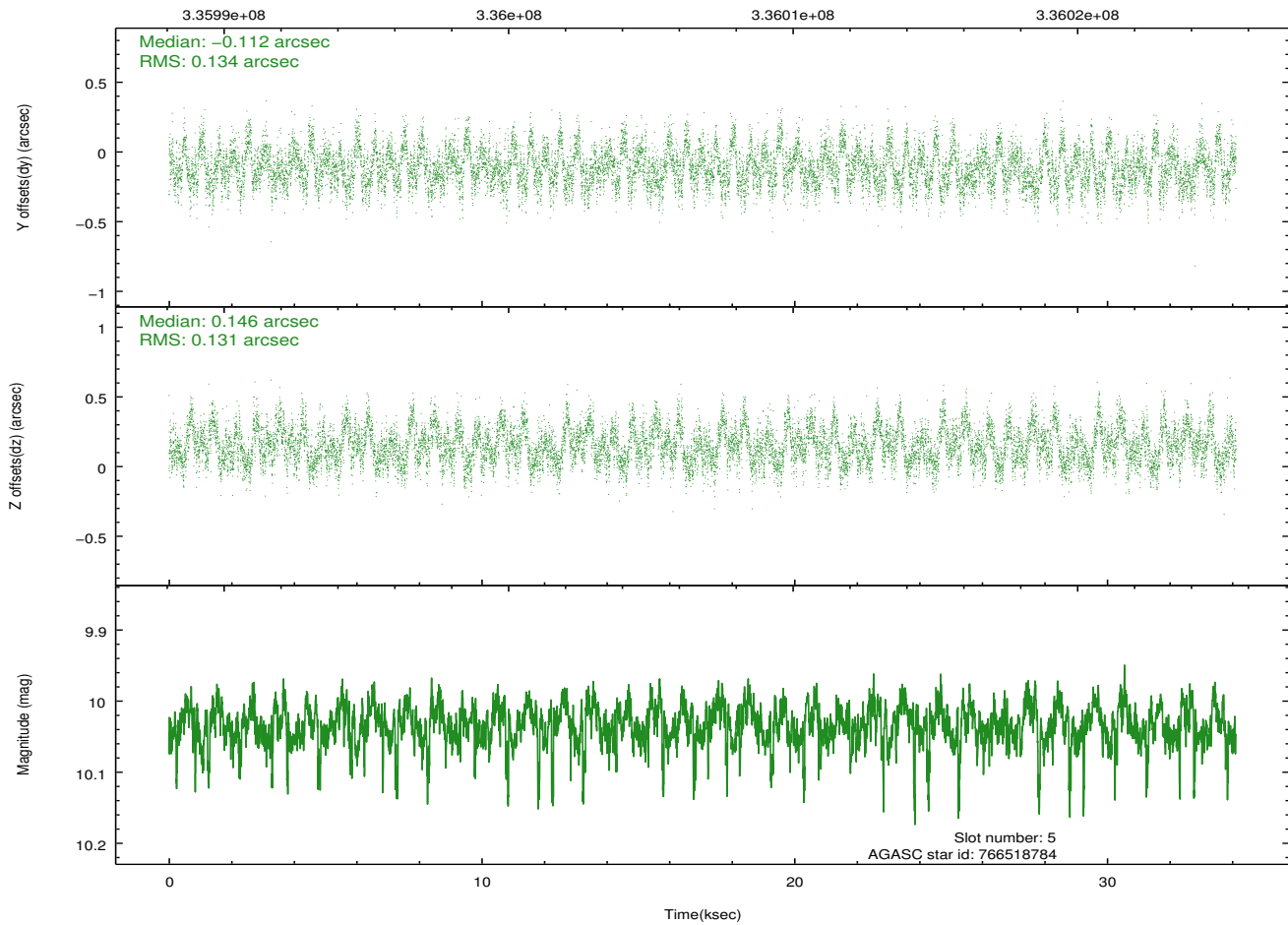
2.4.2 Slot 4



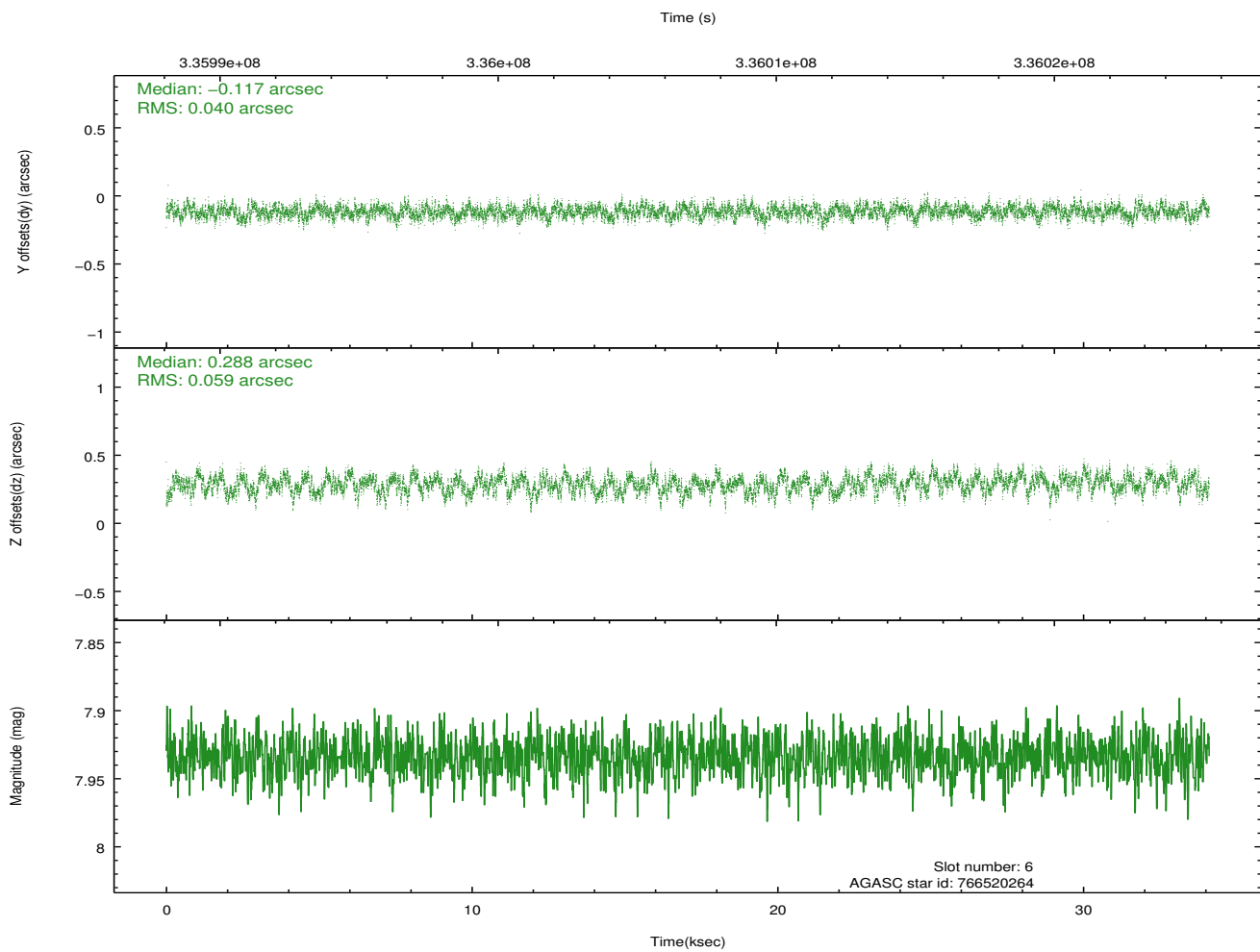
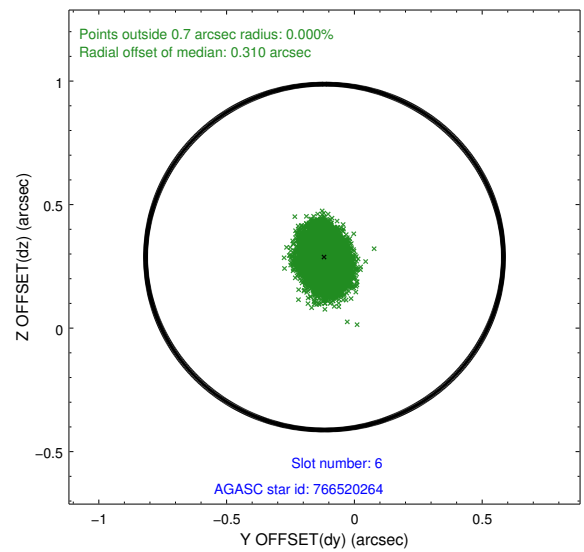
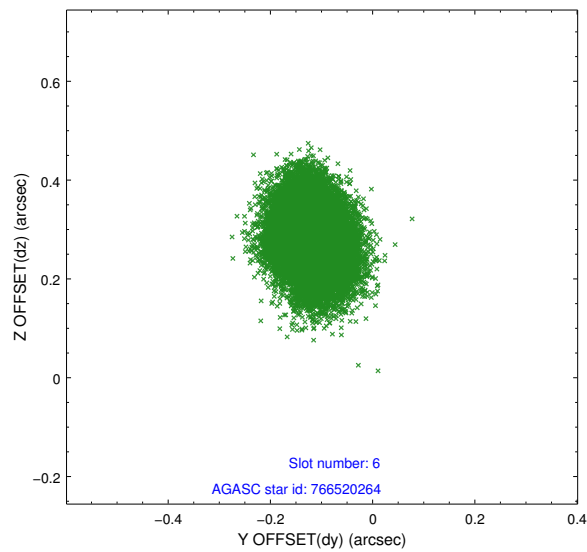
2.4.3 Slot 5



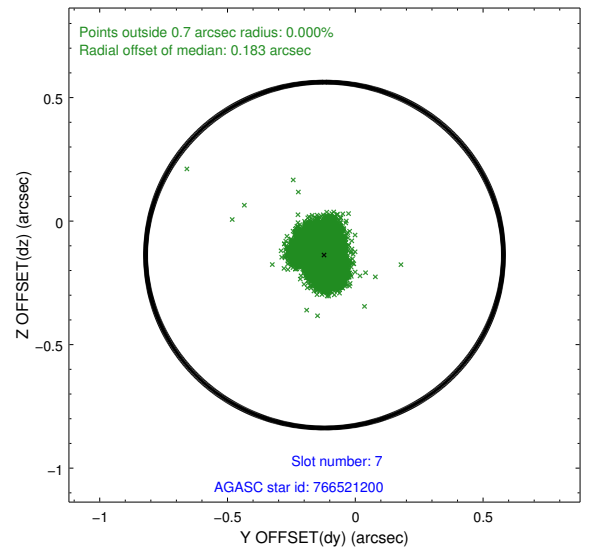
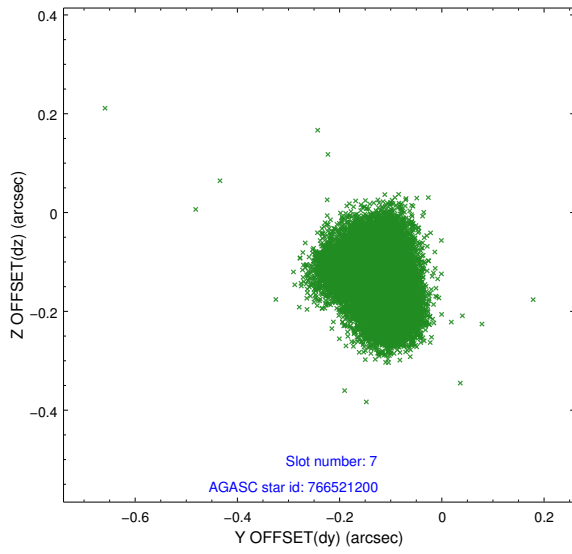
Time (s)



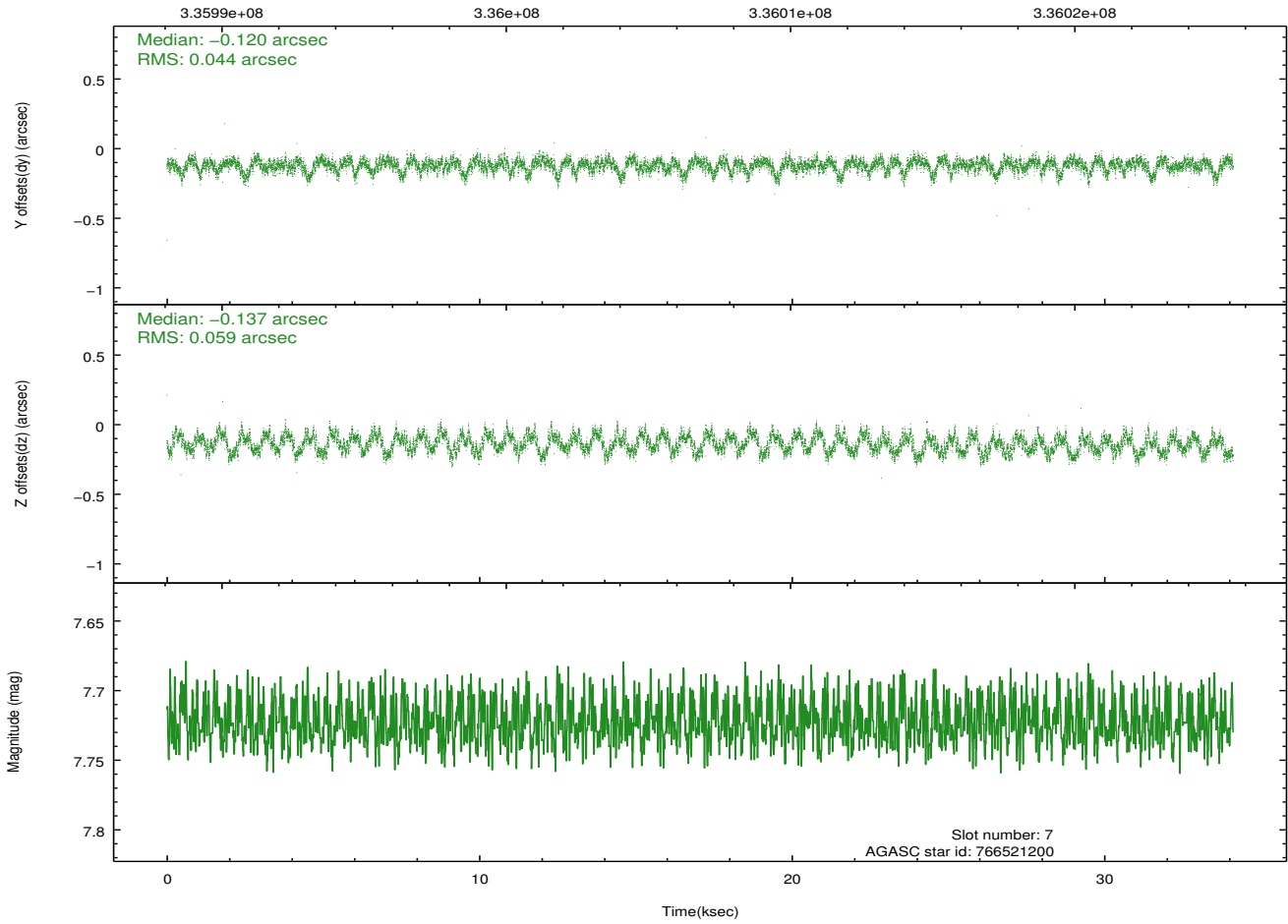
2.4.4 Slot 6



2.4.5 Slot 7

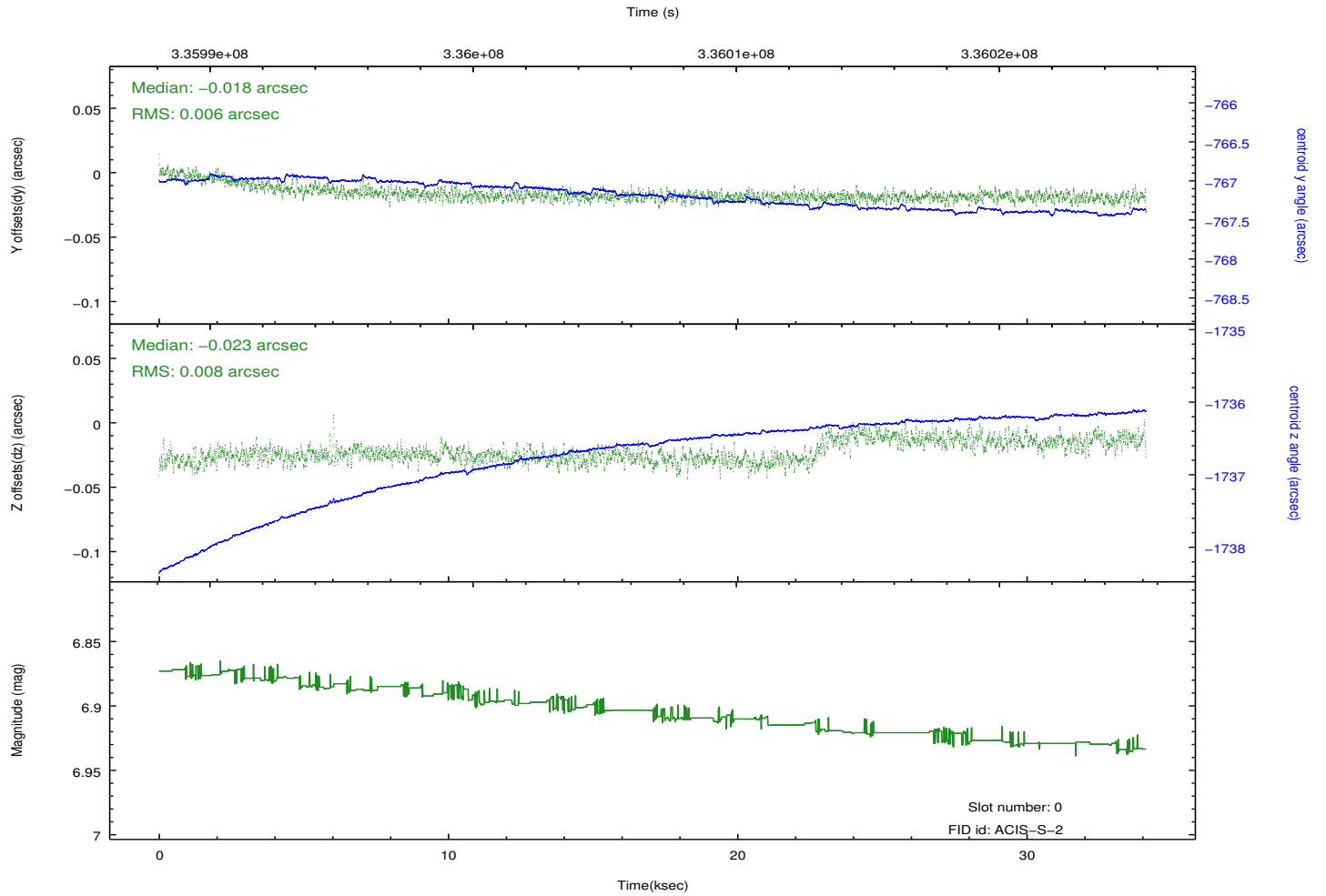
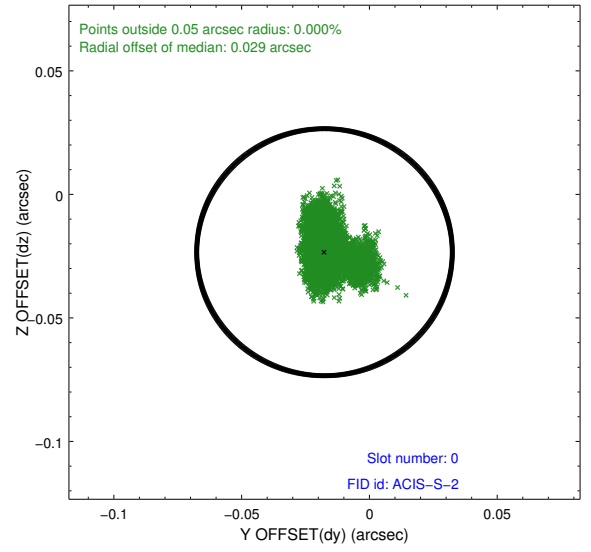
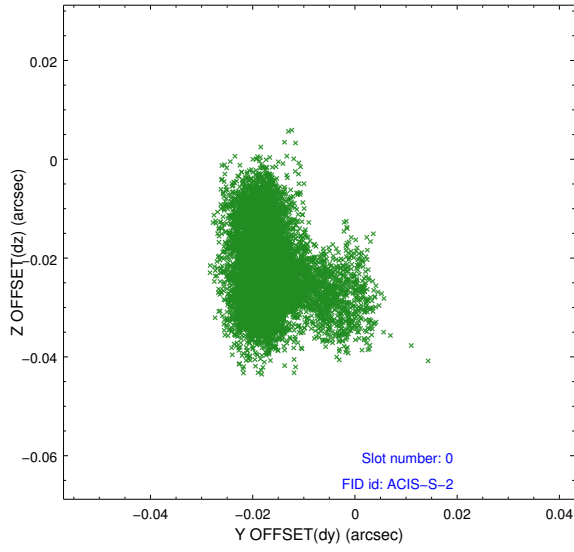


Time (s)

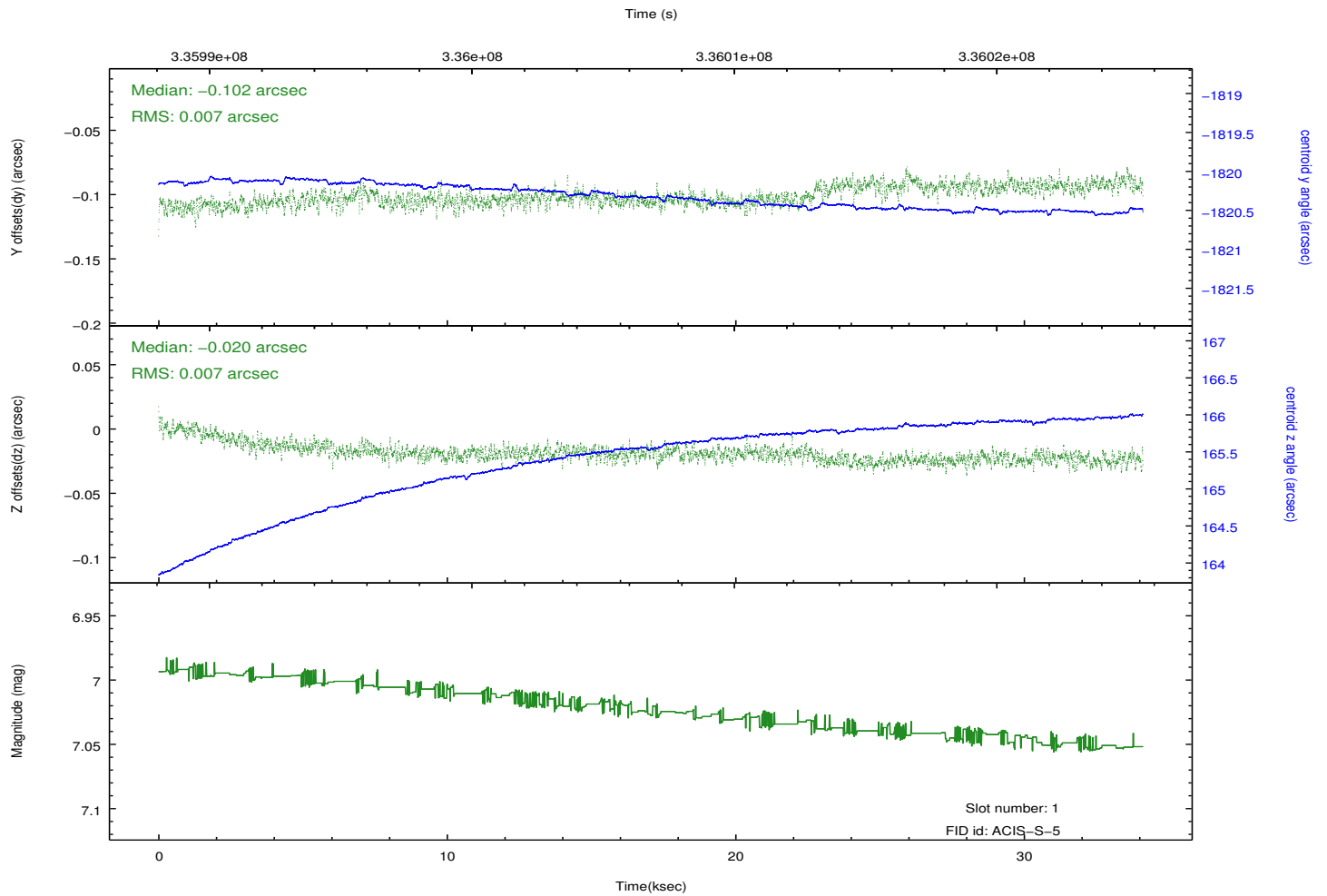
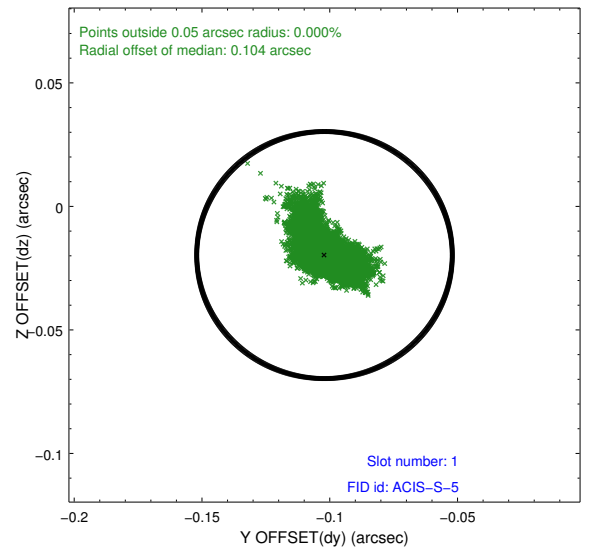
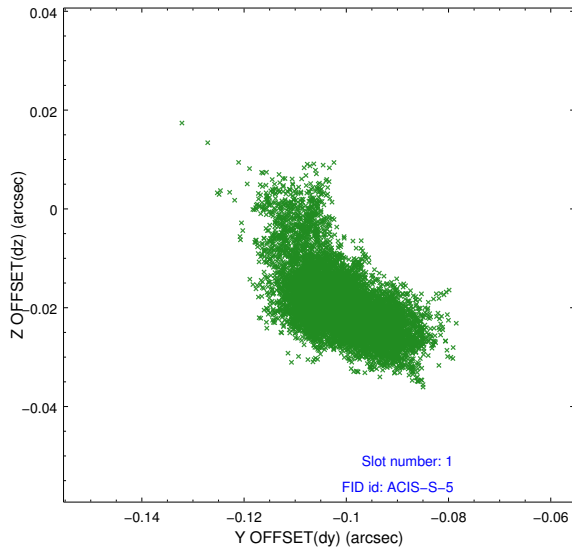


2.5 FID Slots

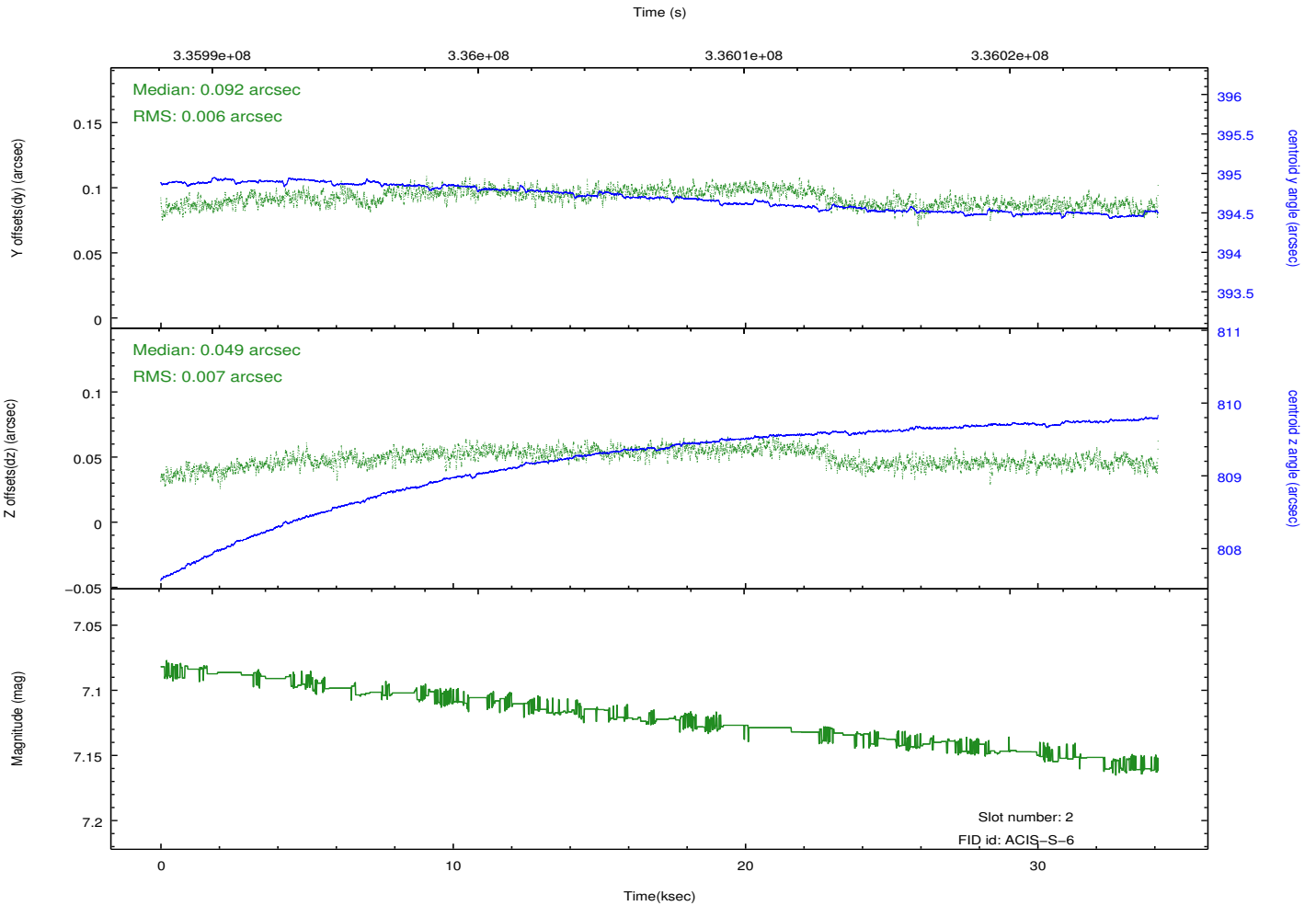
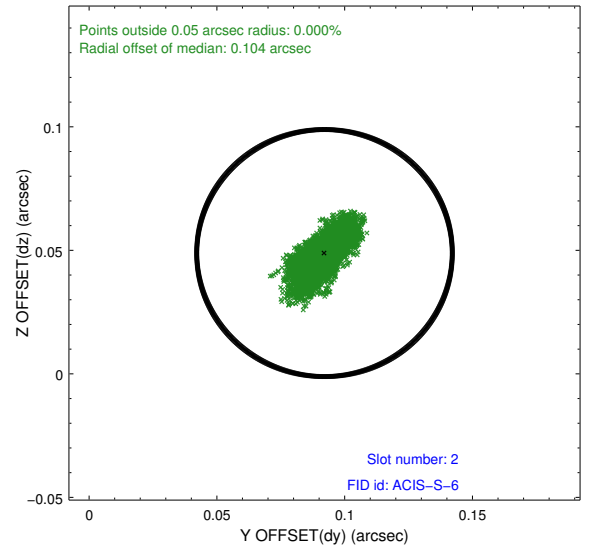
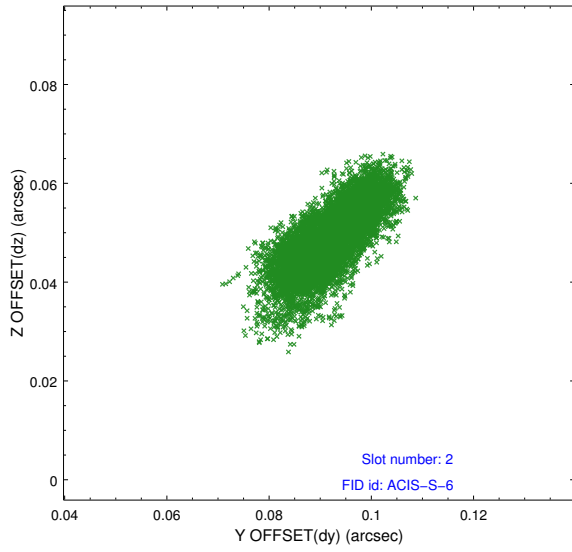
2.5.1 Slot 0



2.5.2 Slot 1



2.5.3 Slot 2



A Summary

A.1 Status

V&V Scientist	Beth Sundheim
V&V Date (YYYY-MM-DD)	2012.05.29
V&V Edition	1
V&V Disposition and Status	OK
V&V Charge Time	34.1124002

A.2 Comments