

# V&V Reference Report

## L2 ASCDS Version : 8.4.4

Observation 9525 - L2 Version 3  
Chandra X-Ray Center

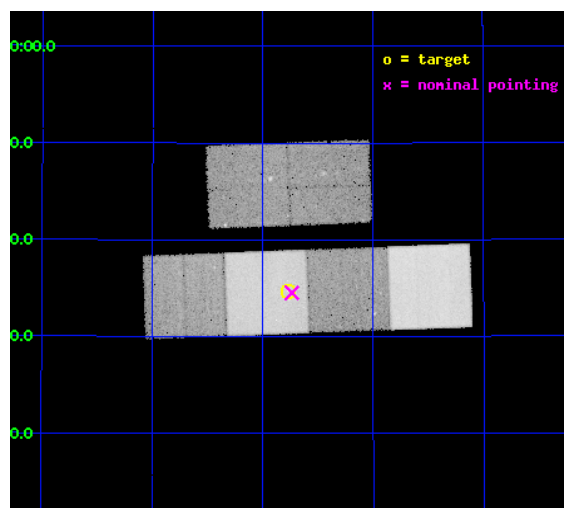
L2 Processing Date : May 22 2012

## Contents

<b>1</b>	<b>Front</b>	<b>2</b>
<b>2</b>	<b>OBI</b>	<b>3</b>
2.1	OBI . . . . .	3
2.1.1	Images . . . . .	3
2.1.2	Bias . . . . .	3
2.1.3	Parameters . . . . .	4
2.1.4	Events . . . . .	4
2.2	Compared Parameters . . . . .	5
2.3	Aspect . . . . .	6
2.4	Star Slots . . . . .	9
2.4.1	Slot 3 . . . . .	9
2.4.2	Slot 4 . . . . .	10
2.4.3	Slot 5 . . . . .	11
2.4.4	Slot 6 . . . . .	12
2.4.5	Slot 7 . . . . .	13
2.5	FID Slots . . . . .	14
2.5.1	Slot 0 . . . . .	14
2.5.2	Slot 1 . . . . .	15
2.5.3	Slot 2 . . . . .	16
<b>A</b>	<b>Summary</b>	<b>17</b>
A.1	Status . . . . .	17
A.2	Comments . . . . .	17

# 1 Front

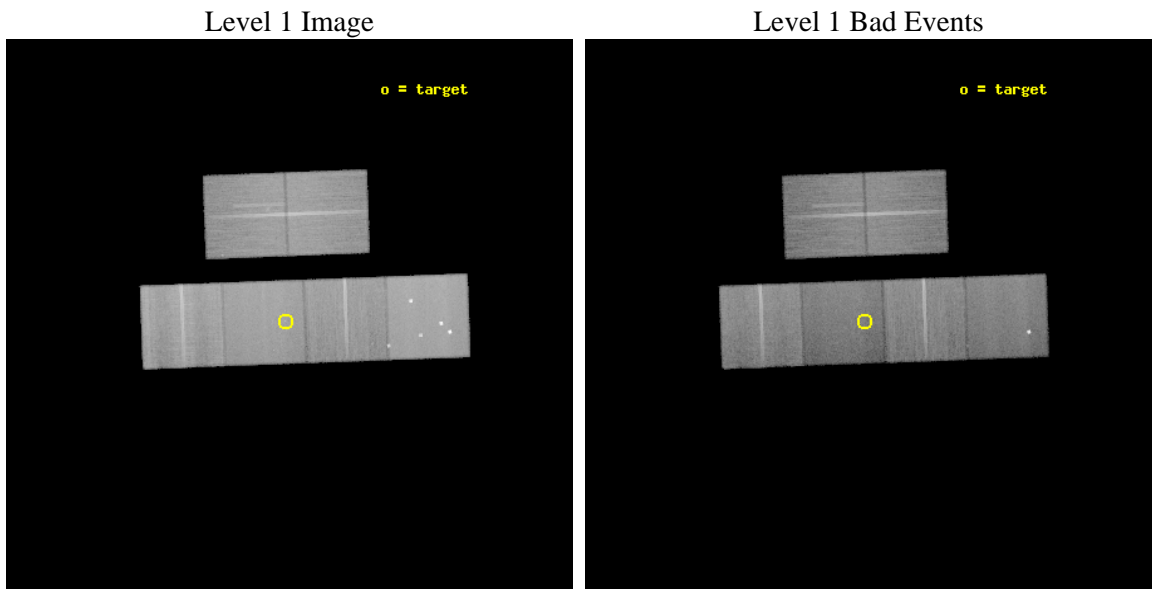
seq_num	600666	Sequence number
obs_id	9525	Observation id
title	X-ray Localization of the Globular Cluster G1 in M31	Proposal titl
observer	Prof. Albert Kong	Principal investigator
object	G1	Source name
dtycycle	0	&#160
cycle	P	events from which exps? Prim/Second/Both
ra_targ	8.19375	Observer's specified target RA [deg]
dec_targ	39.577694	Observer's specified target Dec [deg]
ra_nom	8.1839692400641	Nominal RA [deg]
dec_nom	39.575424550463	Nominal Dec [deg]
roll_nom	177.86220267065	Nominal Roll [deg]
revision	3	Processing version of data
ontime	35177.599869013	Sum of GTIs [s]
livetime	34732.159918064	Livetime [s]
ontime2	35177.599869013	Sum of GTIs [s]
ontime3	35174.358868718	Sum of GTIs [s]
ontime5	35177.599869013	Sum of GTIs [s]
ontime6	35171.117818296	Sum of GTIs [s]
ontime7	35177.599869013	Sum of GTIs [s]
ontime8	35177.599869013	Sum of GTIs [s]
l2events	444657	Number of level 2 events



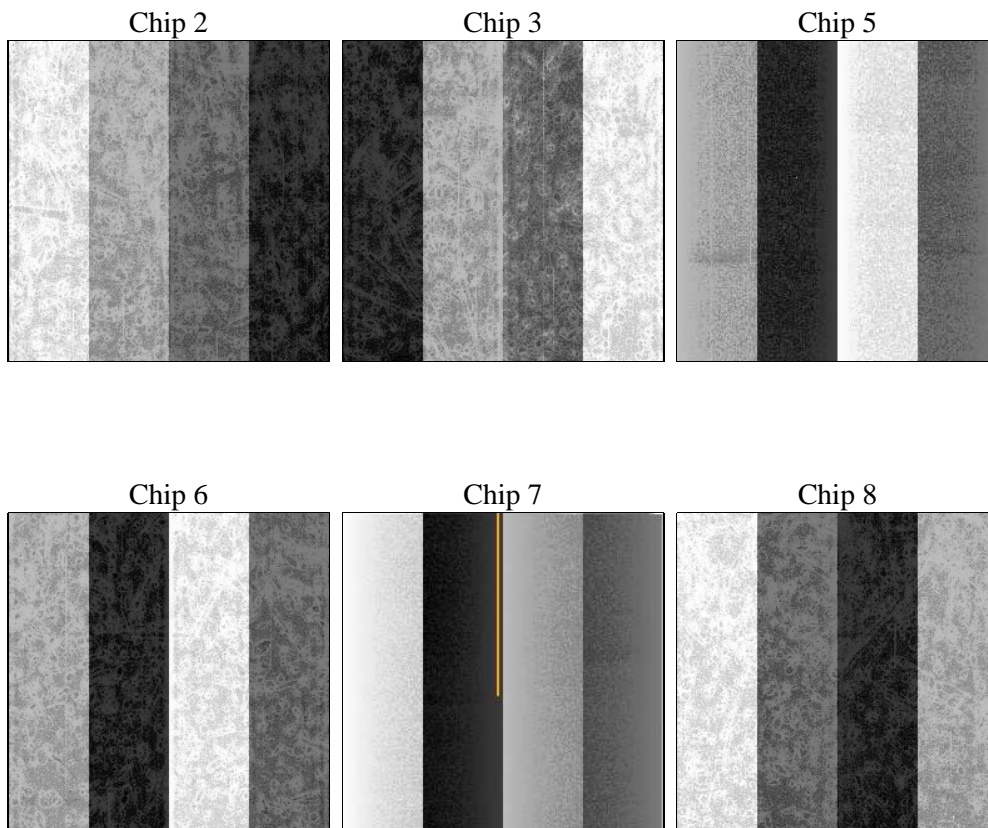
## 2 OBI

### 2.1 OBI

#### 2.1.1 Images



#### 2.1.2 Bias



### 2.1.3 Parameters

obi_num	0	Obi number	sched_exp_time	35000.000000	[s] Scheduled observation exposure time
ascdsver	8.4.4	Processing system revision	ontime	35177.599869013	Sum of GTIs [s]
caldbver	4.4.9	&#160	ontime2	35177.599869013	Sum of GTIs [s]
date	2012-05-22T10:41:49	Date and time of file creation	ontime3	35174.358868718	Sum of GTIs [s]
revision	3	Processing version of data	ontime5	35177.599869013	Sum of GTIs [s]
			ontime6	35171.117818296	Sum of GTIs [s]
			ontime7	35177.599869013	Sum of GTIs [s]
			ontime8	35177.599869013	Sum of GTIs [s]
			l1events	2077968	Number of level 1 events

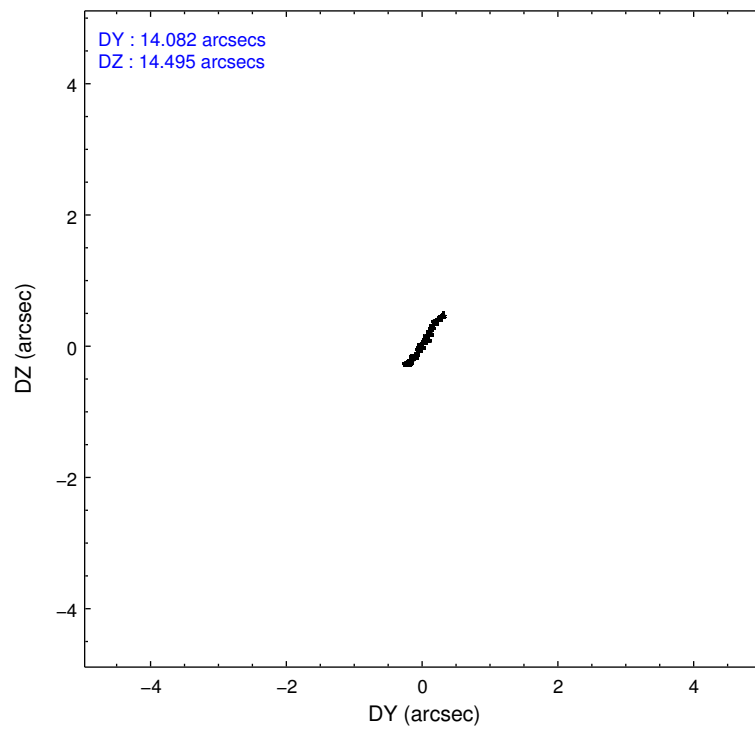
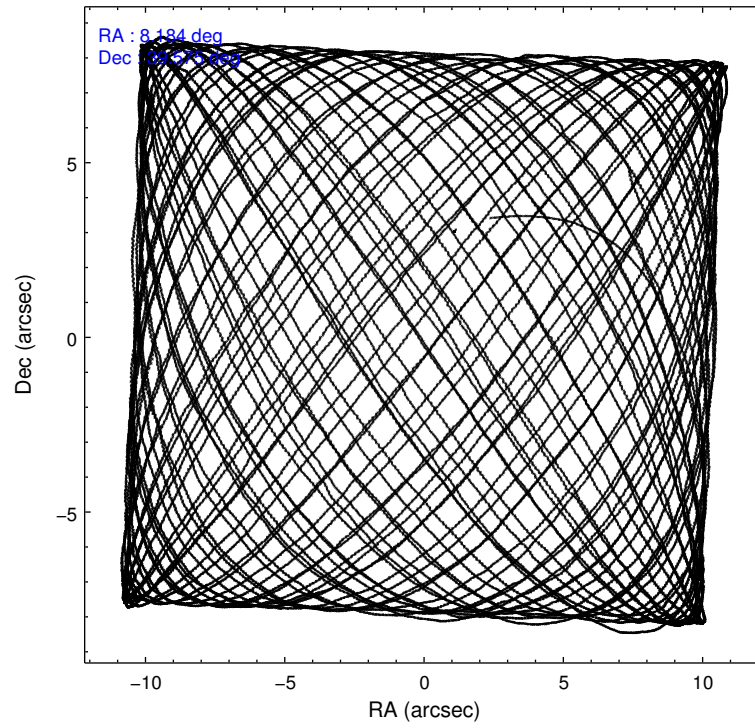
### 2.1.4 Events

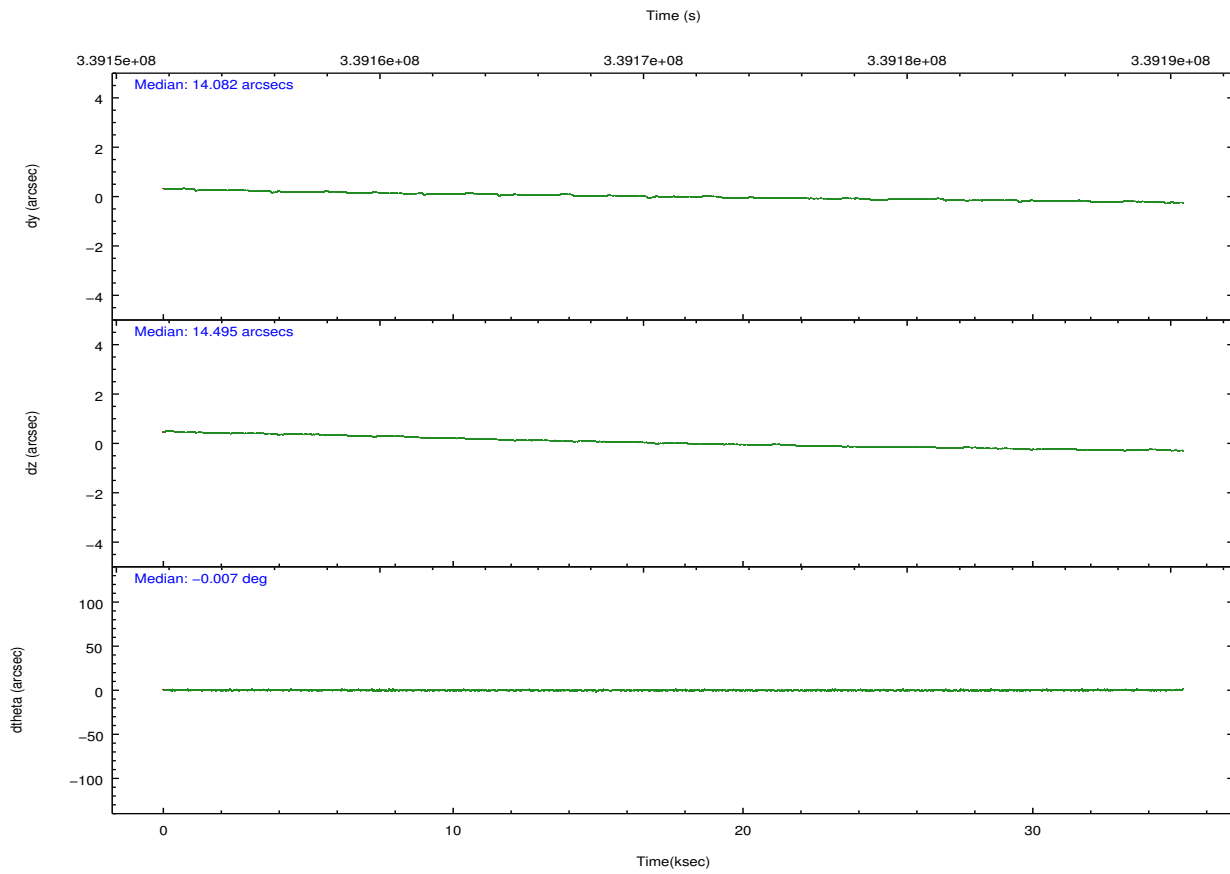
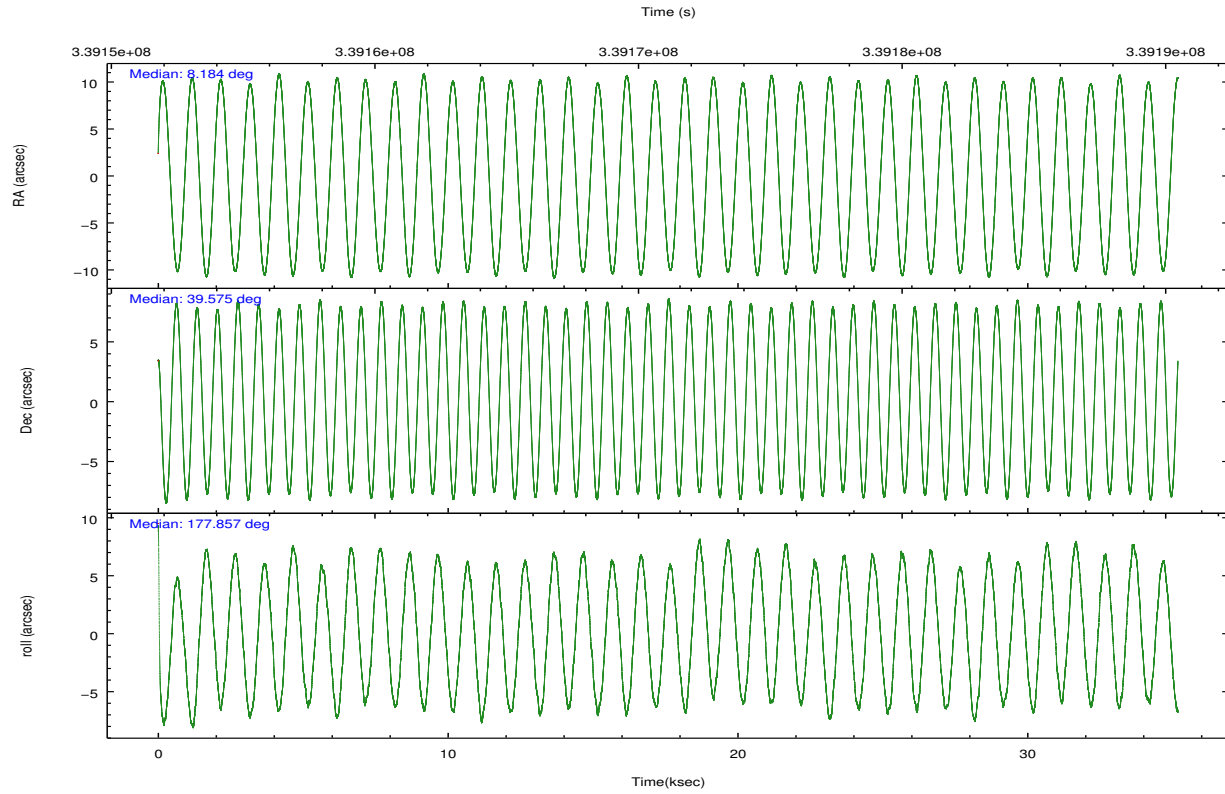
	ccd 2	ccd 3	ccd 5	ccd 6	ccd 7	ccd 8		ccd 2	ccd 3	ccd 5	ccd 6	ccd 7	ccd 8
level 1 events	317821	291205	446340	300590	341594	380418	grade 0 events	10661	10281	35196	10901	14458	26666
rejected events	288938	263304	225373	270219	190449	290403		3%	3%	7%	3%	4%	7%
rejected %	90%	90%	50%	89%	55%	76%	grade 1 events	192	156	948	167	434	280
								0%	0%	0%	0%	0%	0%
							grade 2 events	7235	6359	65127	6929	31760	21944
								2%	2%	14%	2%	9%	5%
							grade 3 events	3235	3189	8735	3352	14321	10104
								1%	1%	1%	1%	4%	2%
							grade 4 events	3129	3203	8398	3302	14223	9253
								0%	1%	1%	1%	4%	2%
							grade 5 events	10142	12188	34832	11968	36474	18130
								3%	4%	7%	3%	10%	4%
							grade 6 events	5493	5671	109881	6775	80918	24838
								1%	1%	24%	2%	23%	6%
							grade 7 events	277734	250158	183223	257196	149006	269203
								87%	85%	41%	85%	43%	70%

## 2.2 Compared Parameters

Parameter	Planned	Actual	Parameter	Planned	Actual
Instrument	ACIS	ACIS	Obspar format version number	7	7
Detector	ACIS-235678	ACIS-235678	Obspar file type	PREDICTED	ACTUAL
Grating	NONE	NONE	Obspar update status	NONE	UPDATED
Data mode	VFAINT	VFAINT	CCD I0 on	N	N
Observation mode	POINTING	POINTING	CCD I1 on	N	N
[deg] Pointing RA	8.215091	8.183969240064073	CCD I2 on	O1	Y
[deg] Pointing Dec	39.588535	39.57542455046305	CCD I3 on	O2	Y
[deg] Pointing Roll	177.685734	177.8622026706503	CCD S0 on	N	N
[mm] SIM focus pos	-0.684267	-0.6828225247311905	CCD S1 on	Y	Y
[mm] SIM defocus	0	0.001444936568705701	CCD S2 on	Y	Y
[mm] SIM translation stage pos	-190.132523	-190.1400660498719	CCD S3 on	Y	Y
[mm] SIM translation stage offset	0	0.00754346686406393	CCD S4 on	O3	Y
[s] Observation start time (MET)	339153715.184000	339151984.6902	CCD S5 on	N	N
Observation start date	2008-09-30T09:20:50	2008-09-30T08:53:04	Number of optional ACIS chips dropped	0	0
[s] Observation end time (MET)	339188715.184000	339189628.32956	On-chip summing requested	N	N
Observation end date	2008-09-30T19:04:10	2008-09-30T19:20:28	Subarray requested	NONE	NONE
Read mode	TIMED	TIMED	Alternating exposures requested	N	N
			[s] Primary exposure time	0.000000	3.2

## 2.3 Aspect



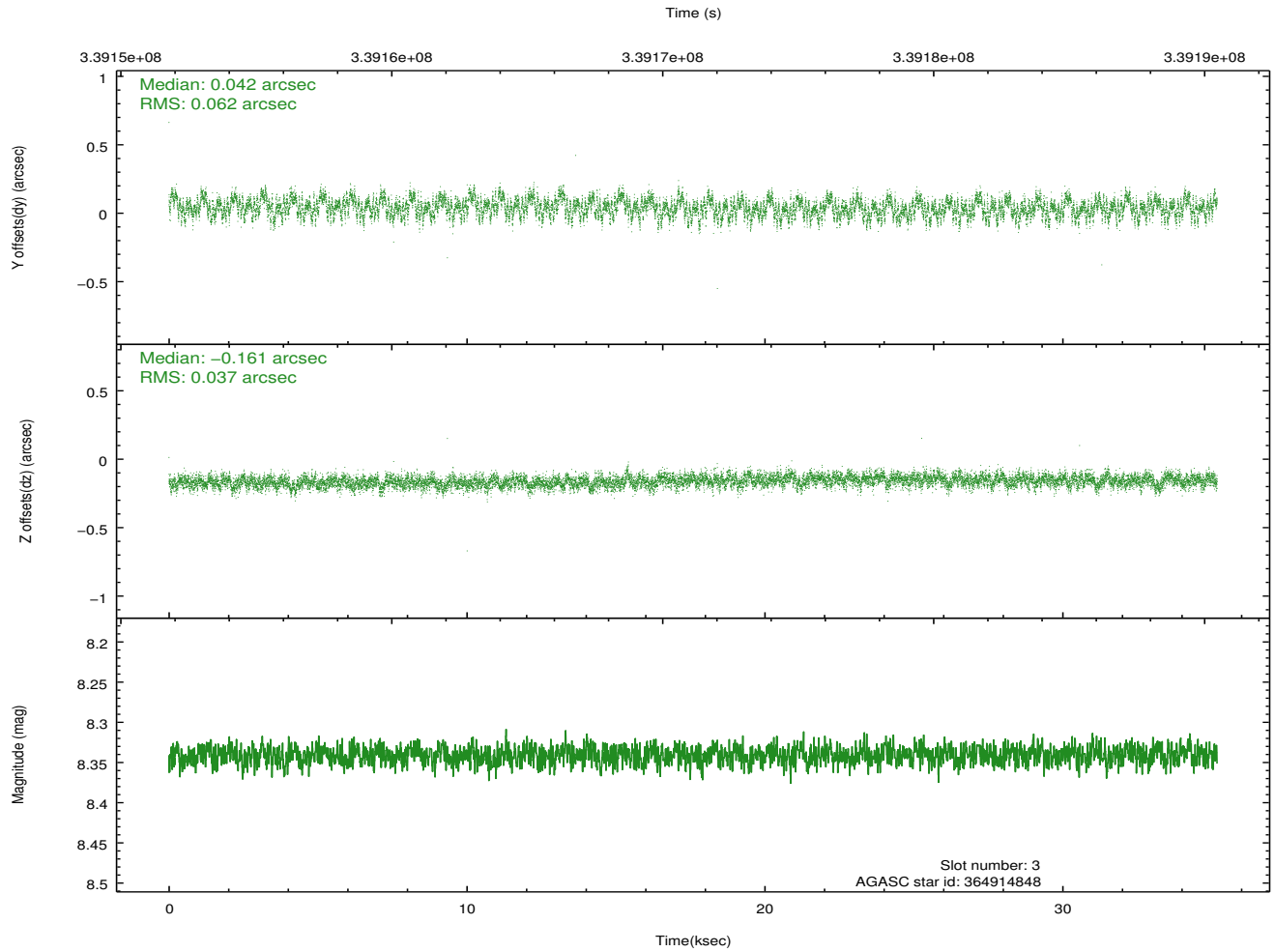
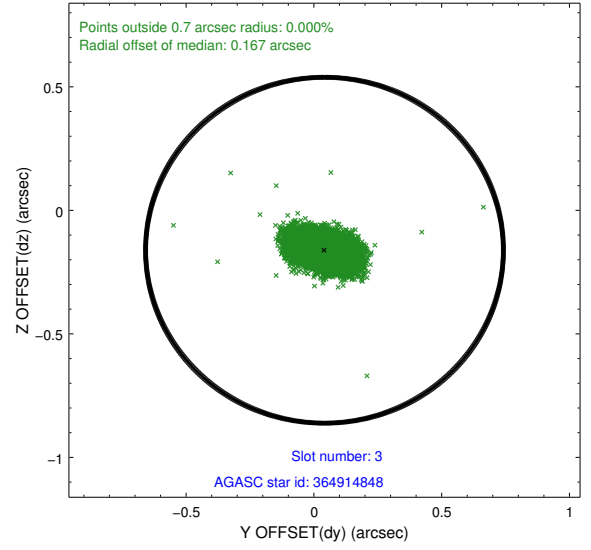
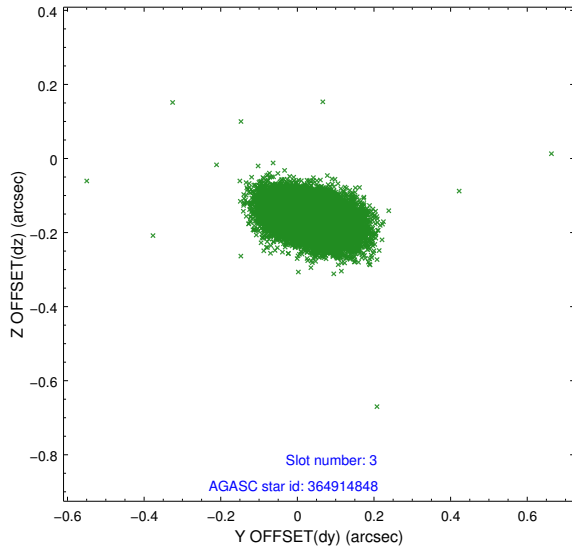


### Slot Statistics

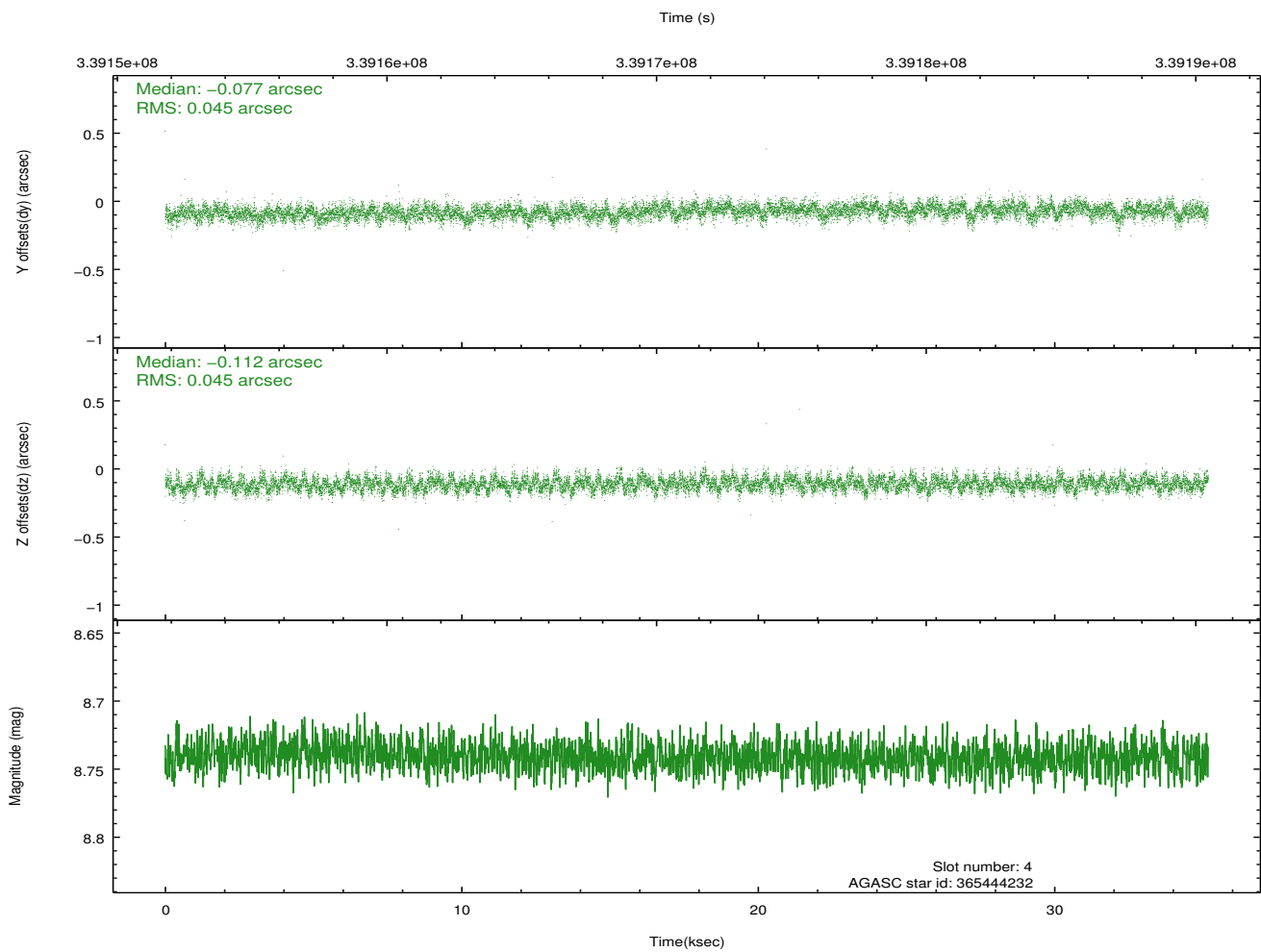
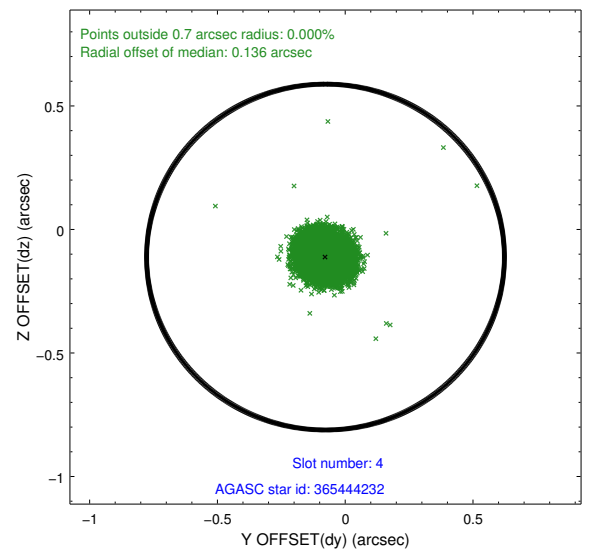
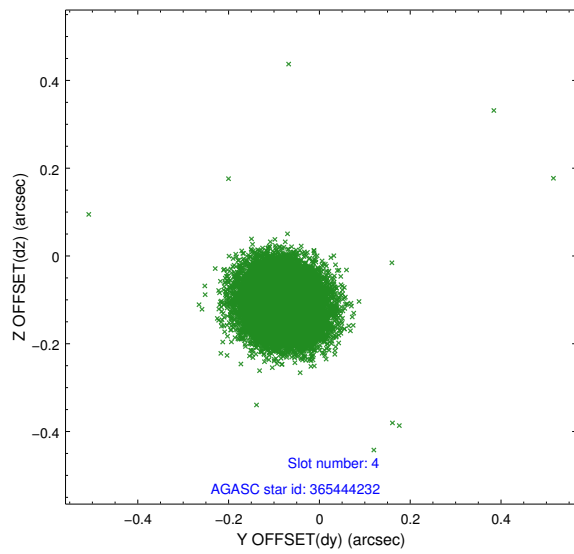
slot	status	id	mag	n_pts	med_dy	med_dz	dr1	dr2	ra	dec	mean_y	mean_z
0	FID	ACIS-S-1	6.98	8583	0.110	-0.035	0.007	0.012	0.000000	0.000000	929.15	-1731.55
1	FID	ACIS-S-2	6.91	8583	-0.061	-0.016	0.012	0.018	0.000000	0.000000	-766.90	-1736.16
2	FID	ACIS-S-5	7.02	8582	-0.072	0.057	0.012	0.018	0.000000	0.000000	-1820.24	166.00
3	GUIDE	364914848	8.34	17153	0.042	-0.161	0.076	0.126	8.845546	38.953491	-1856.07	2207.01
4	GUIDE	365444232	8.74	17152	-0.077	-0.112	0.067	0.107	7.566908	39.409853	1775.31	709.63
5	GUIDE	364905488	8.80	17154	-0.050	-0.006	0.102	0.158	7.837950	39.010924	970.50	2118.60
6	GUIDE	365431288	8.89	17083	0.069	0.158	0.076	0.123	8.467902	39.603153	-698.24	-81.39
7	GUIDE	365443920	9.12	17148	0.020	0.125	0.093	0.153	8.533900	40.019291	-815.20	-1586.24

## 2.4 Star Slots

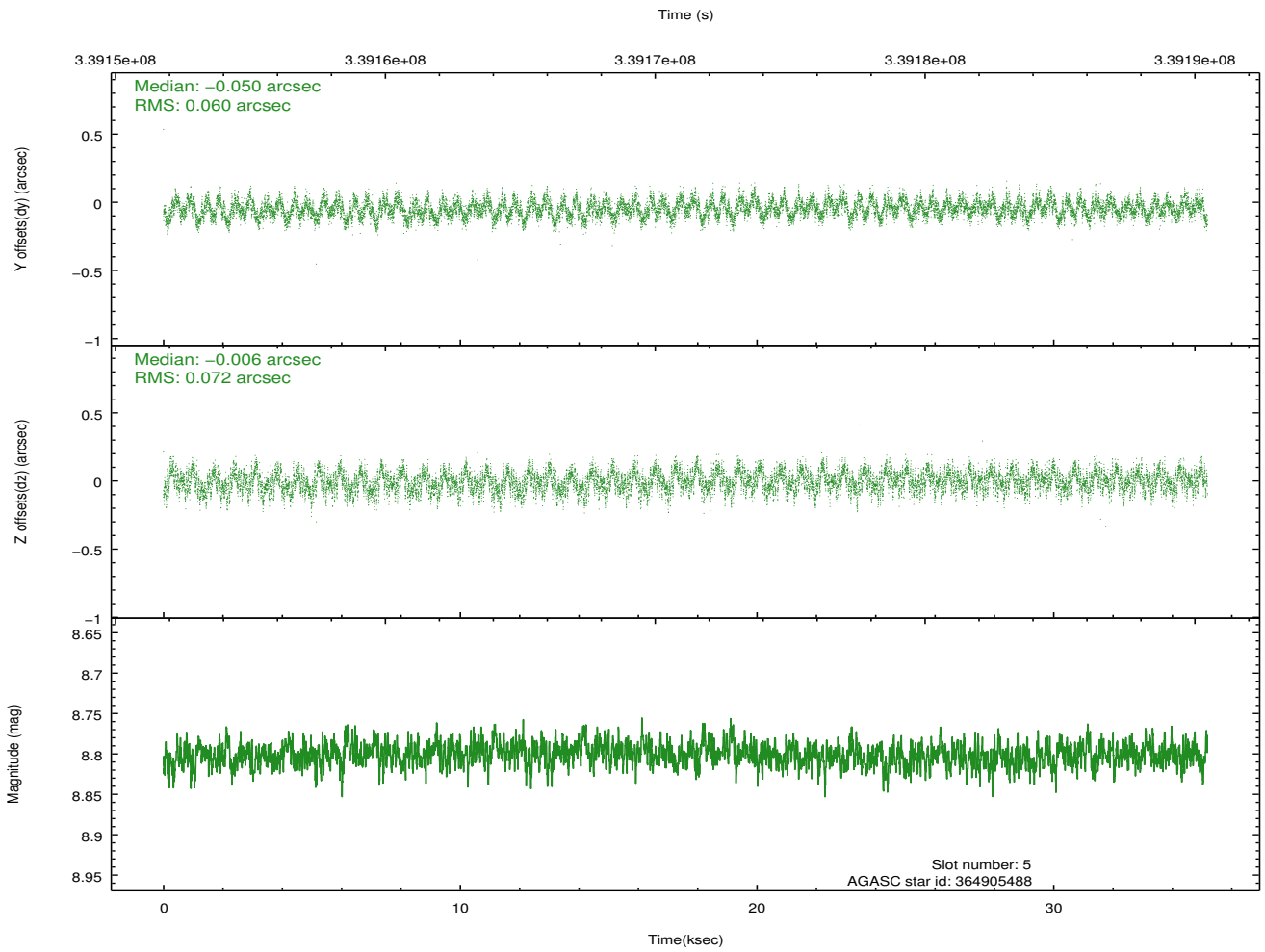
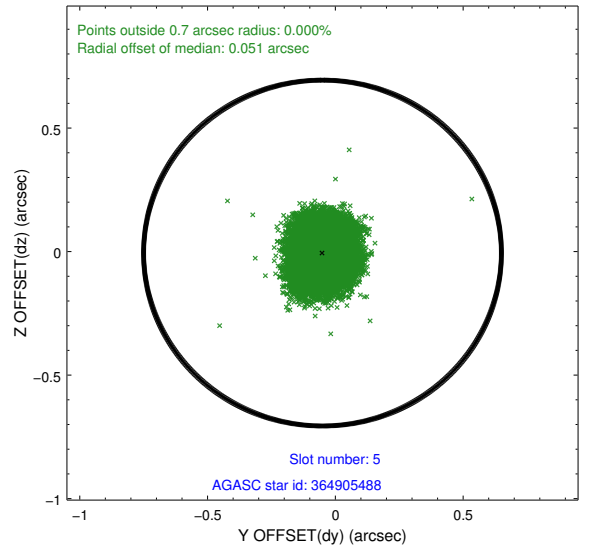
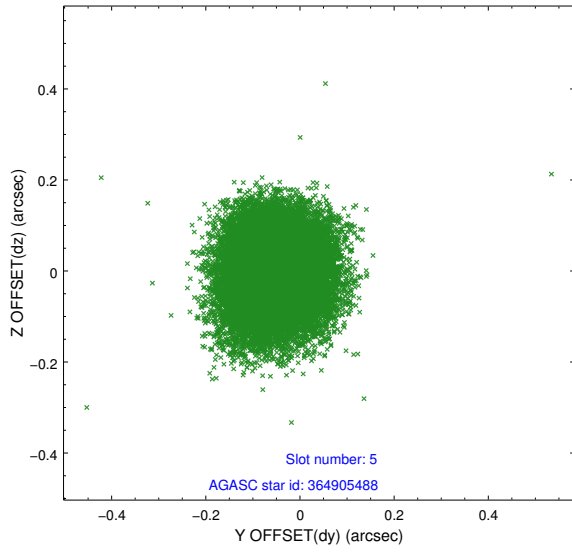
### 2.4.1 Slot 3



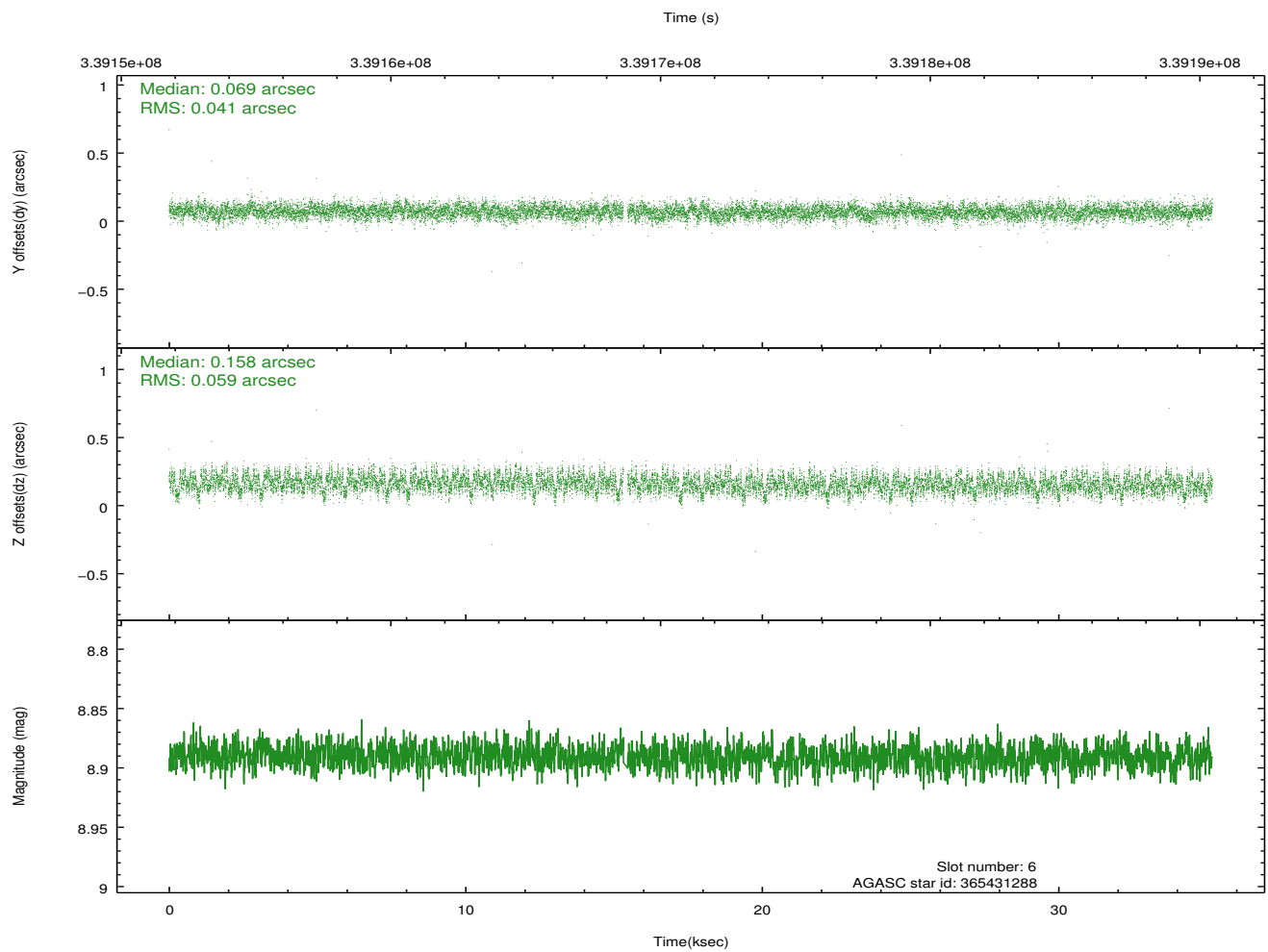
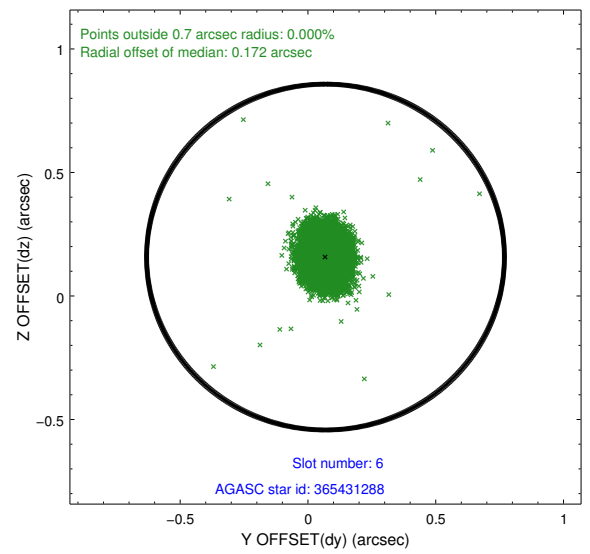
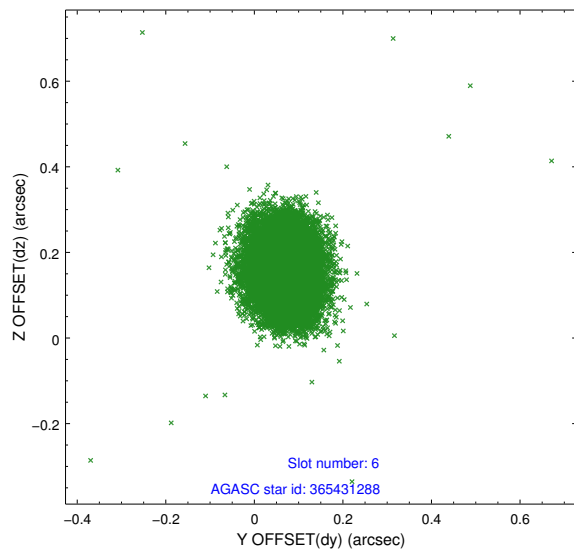
## 2.4.2 Slot 4



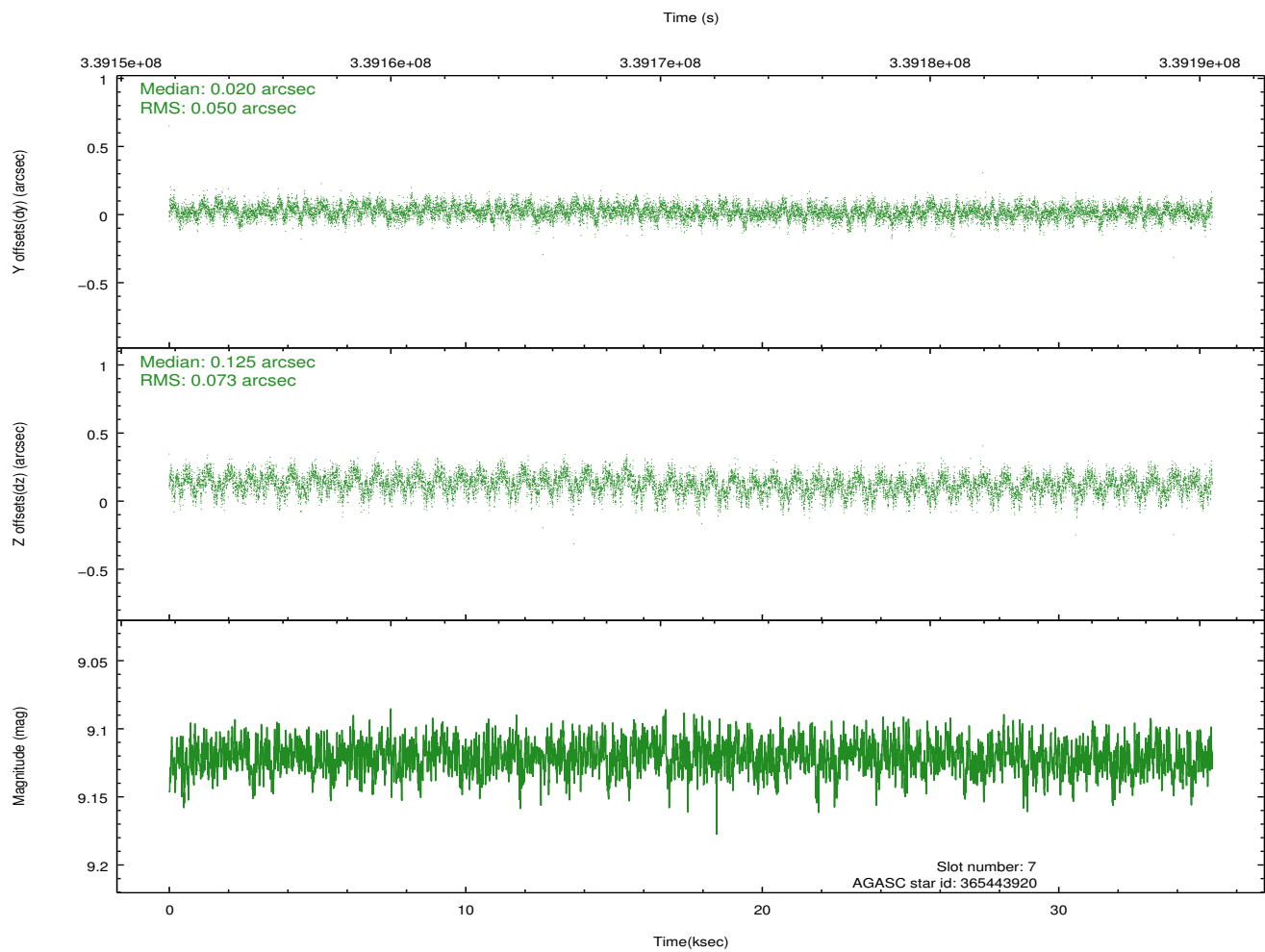
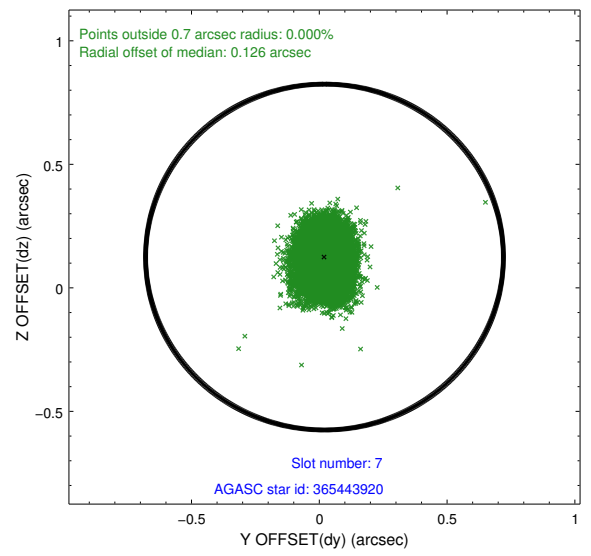
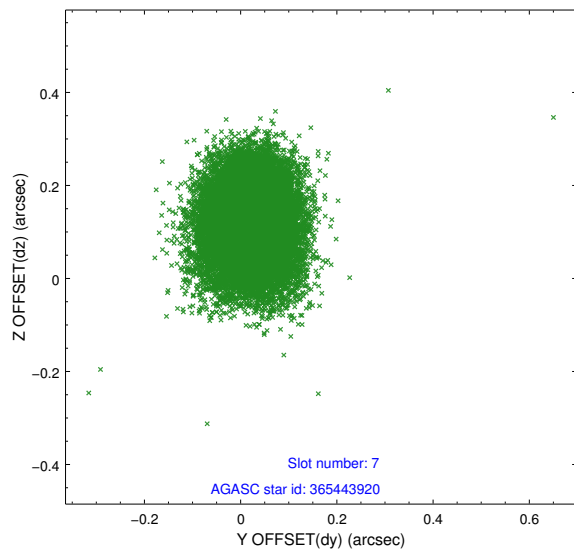
### 2.4.3 Slot 5



## 2.4.4 Slot 6

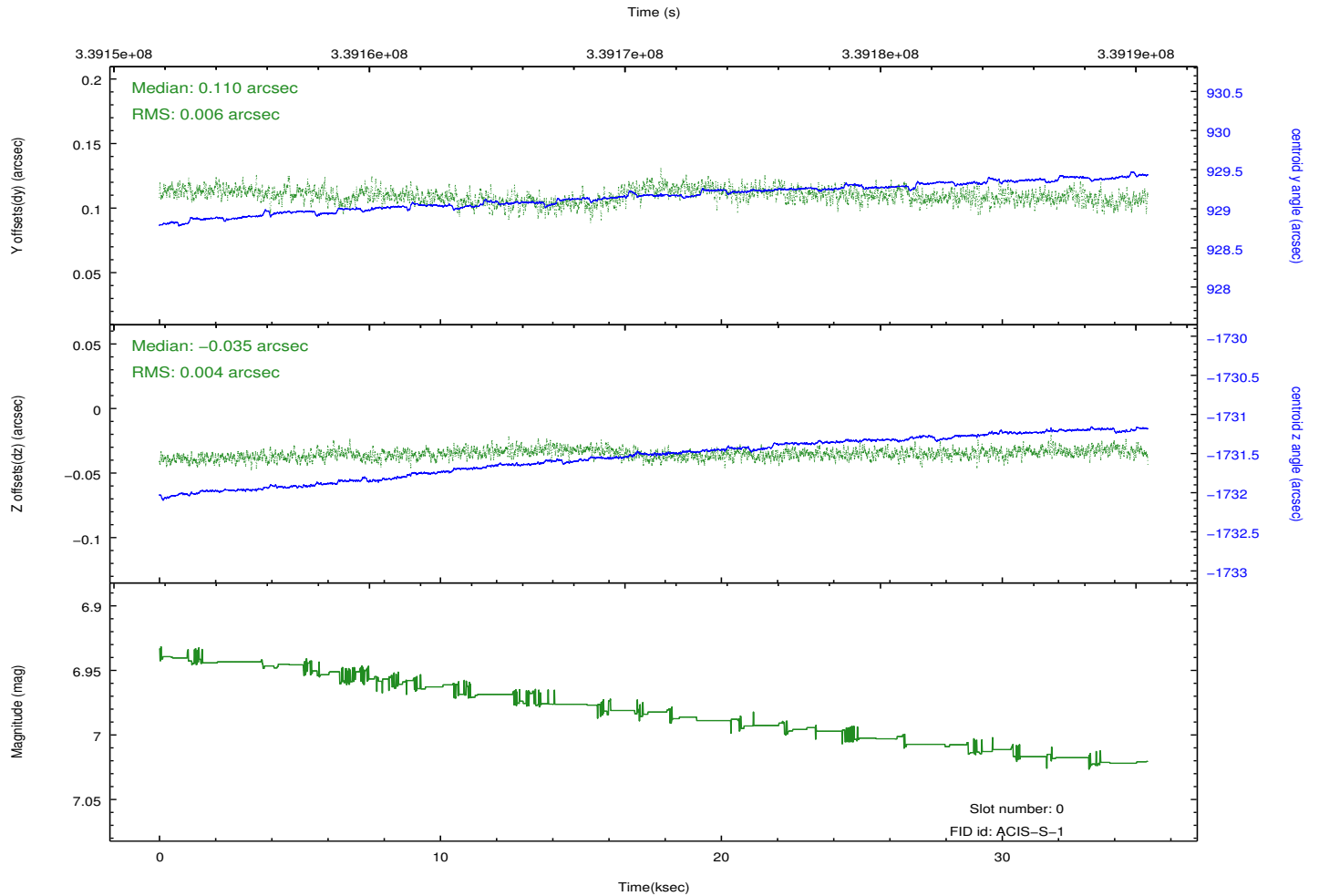
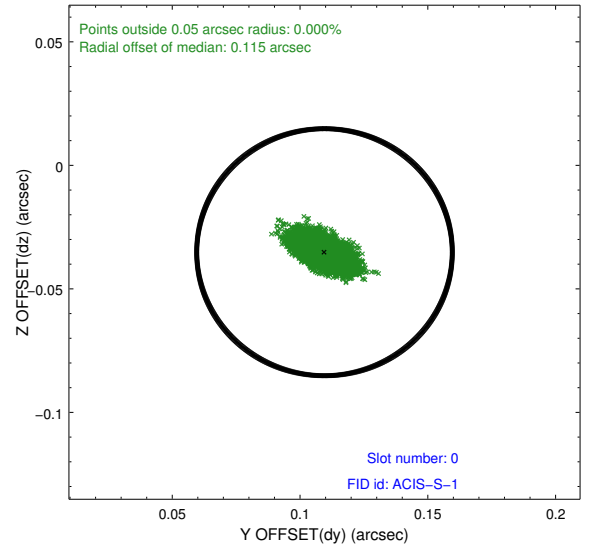
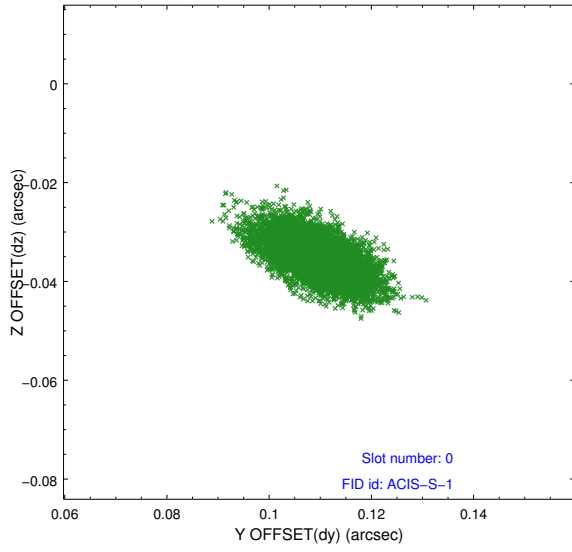


## 2.4.5 Slot 7

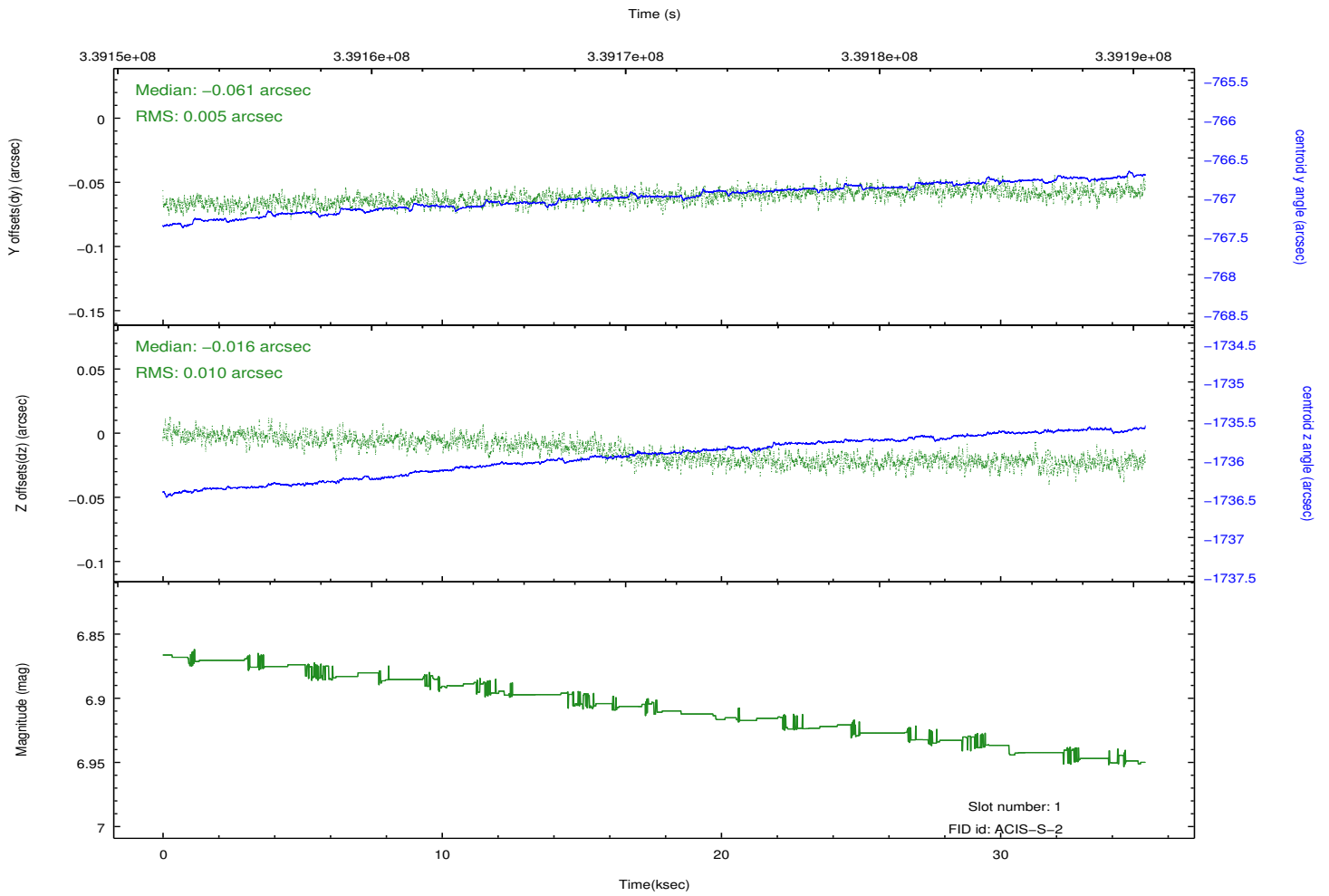
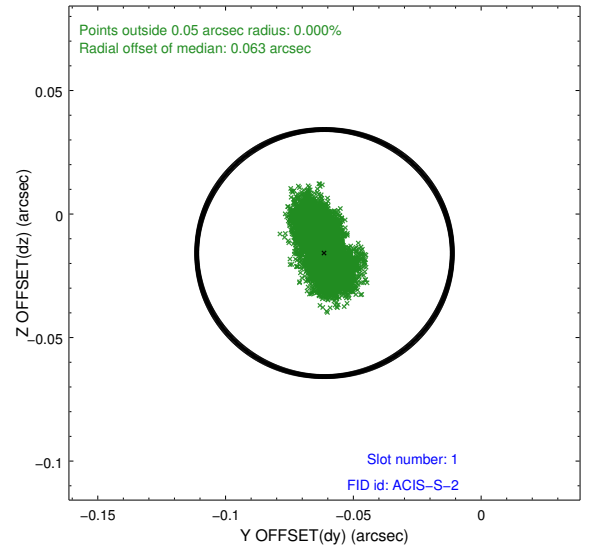
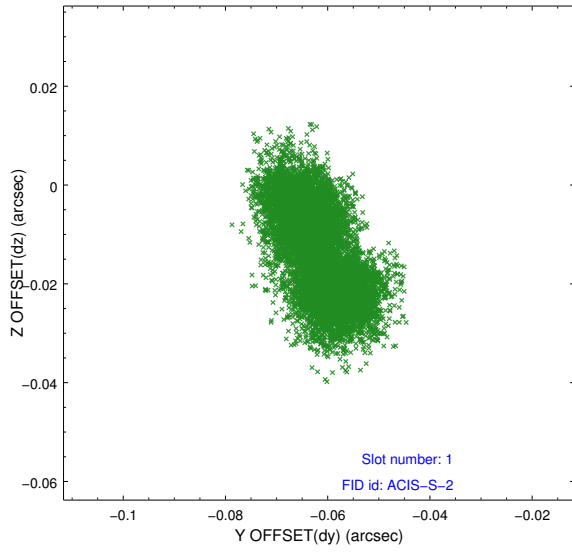


## 2.5 FID Slots

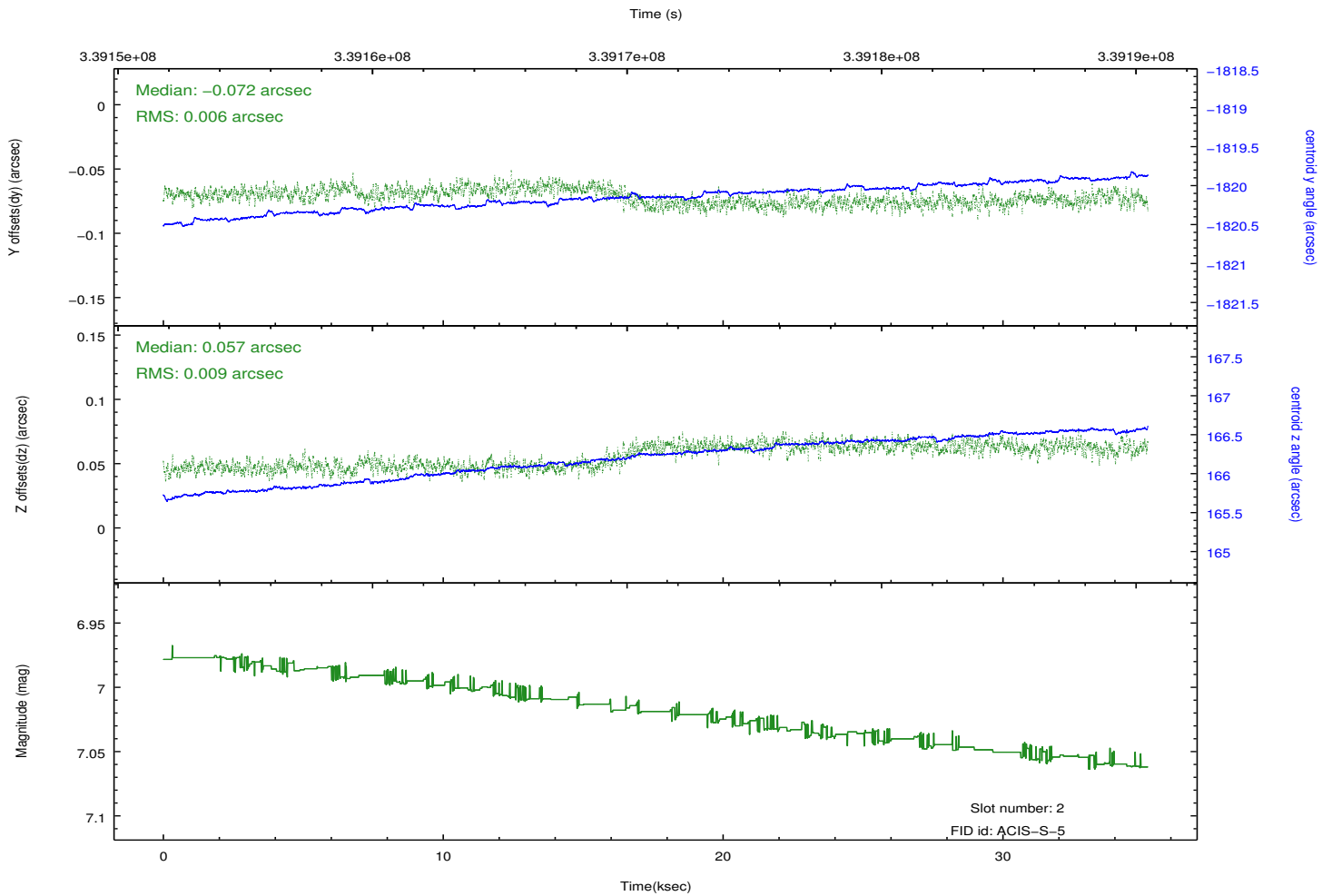
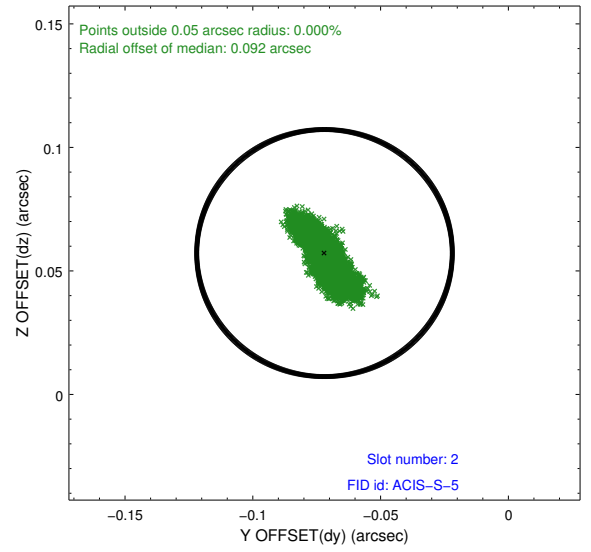
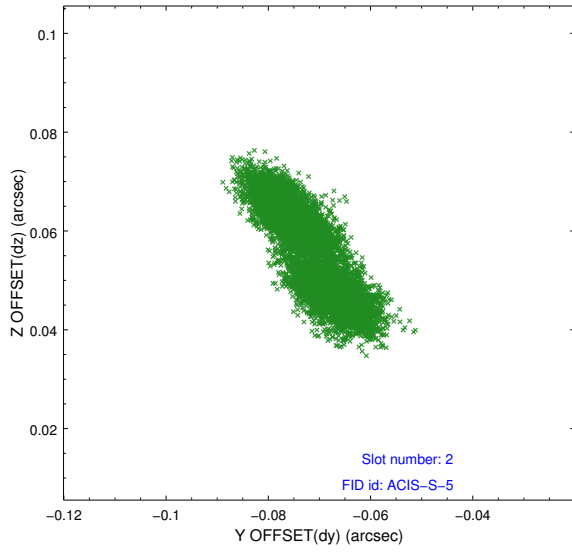
### 2.5.1 Slot 0



## 2.5.2 Slot 1



### 2.5.3 Slot 2



# A Summary

## A.1 Status

V&V Scientist	Jen Lauer
V&V Date (YYYY-MM-DD)	2012.05.30
V&V Edition	1
V&V Disposition and Status	OK
V&V Charge Time	35.1391998

## A.2 Comments

Charge time for this ObsId remains at previous value of 35.1391998 ks although with the current processing the charge time would have been 35.17760 ksec.

=====

Joint Proposal: NOAO