

V&V Reference Report

L2 ASCDS Version : 8.4.4

Observation 9565 - L2 Version 2
Chandra X-Ray Center

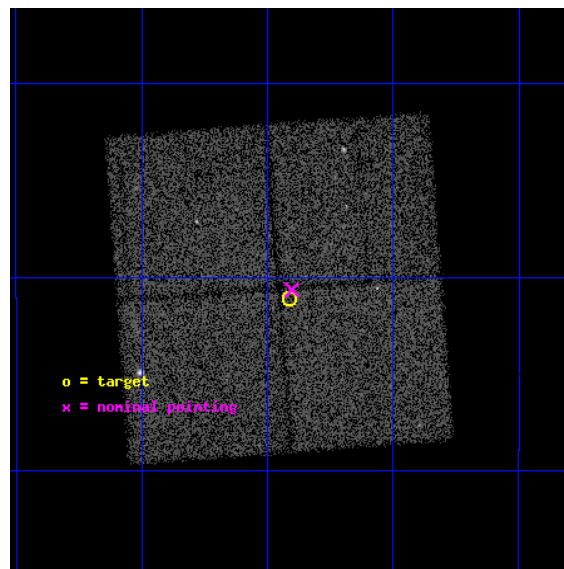
L2 Processing Date : May 14 2012

Contents

1	Front	2
2	OBI	3
2.1	OBI	3
2.1.1	Images	3
2.1.2	Bias	3
2.1.3	Parameters	4
2.1.4	Events	4
2.2	Compared Parameters	5
2.3	Aspect	6
2.4	Star Slots	9
2.4.1	Slot 3	9
2.4.2	Slot 4	10
2.4.3	Slot 5	11
2.4.4	Slot 6	12
2.4.5	Slot 7	13
2.5	FID Slots	14
2.5.1	Slot 0	14
2.5.2	Slot 1	15
2.5.3	Slot 2	16
A	Summary	17
A.1	Status	17
A.2	Comments	17

1 Front

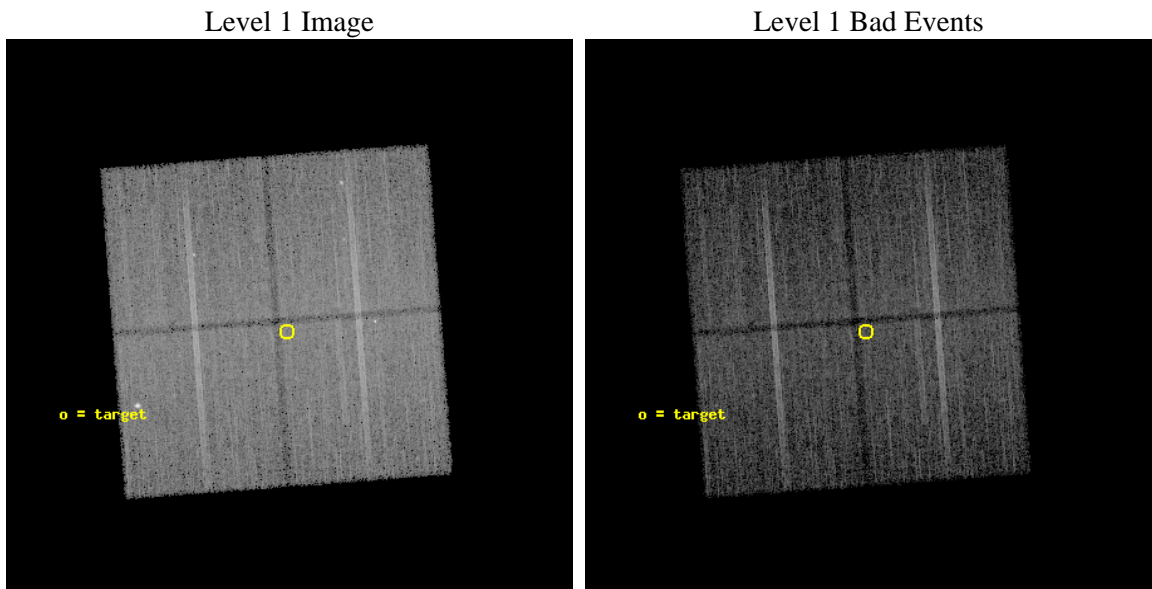
seq_num	600706	Sequence number
obs_id	9565	Observation id
title	Galactic Bulge Latitude Survey -3	Proposal title
observer	Professor Johnathan Grindlay	Principal investigator
object	GBW34	Source name
dtycle	0	
cycle	P	events from which exps? Prim/Second/Both
ra_targ	265.477917	Observer's specified target RA [deg]
dec_targ	-28.685417	Observer's specified target Dec [deg]
ra_nom	265.47582529564	Nominal RA [deg]
dec_nom	-28.677559740702	Nominal Dec [deg]
roll_nom	85.707688430946	Nominal Roll [deg]
revision	2	Processing version of data
ontime	15177.60011673	Sum of GTIs [s]
liveltime	14979.293597618	Livetime [s]
ontime0	15177.60011673	Sum of GTIs [s]
ontime1	15177.60011673	Sum of GTIs [s]
ontime2	15177.60011673	Sum of GTIs [s]
ontime3	15177.60011673	Sum of GTIs [s]
l2events	73386	Number of level 2 events



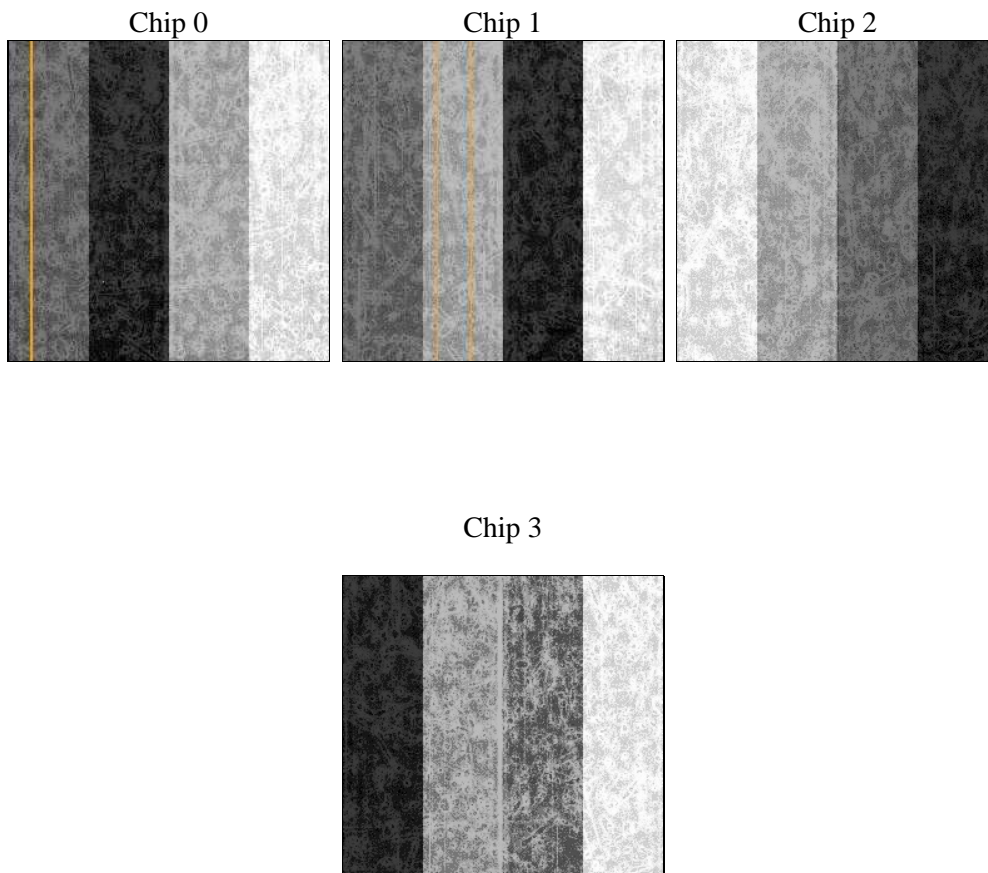
2 OBI

2.1 OBI

2.1.1 Images



2.1.2 Bias



2.1.3 Parameters

obi_num	1	Obi number	sched_exp_time	15000.000000	[s] Scheduled observation exposure time
ascdsver	8.4.4	Processing system revision	ontime	15177.60011673	Sum of GTIs [s]
caldbver	4.4.9	 	ontime0	15177.60011673	Sum of GTIs [s]
date	2012-05-14T02:43:29	Date and time of file creation	ontime1	15177.60011673	Sum of GTIs [s]
revision	2	Processing version of data	ontime2	15177.60011673	Sum of GTIs [s]
			ontime3	15177.60011673	Sum of GTIs [s]
			l1events	591145	Number of level 1 events

2.1.4 Events

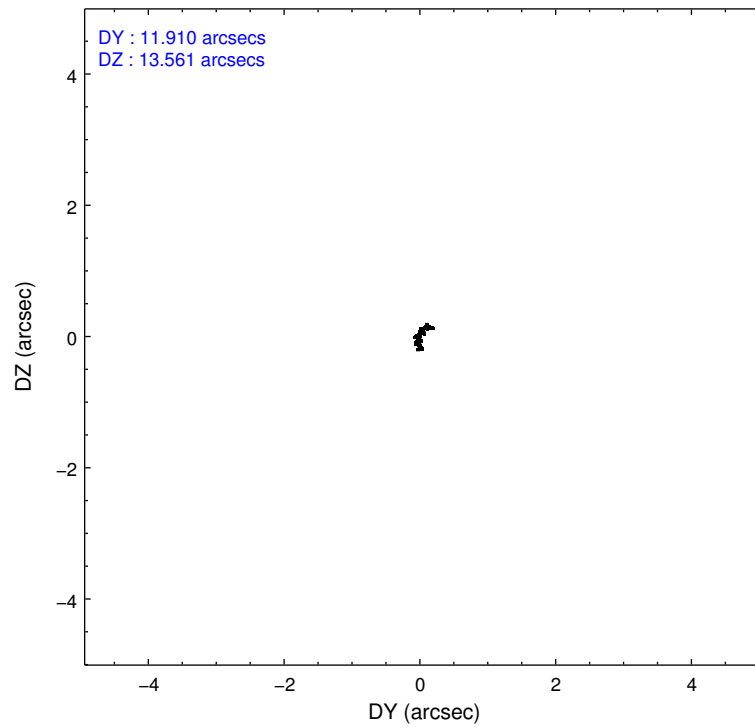
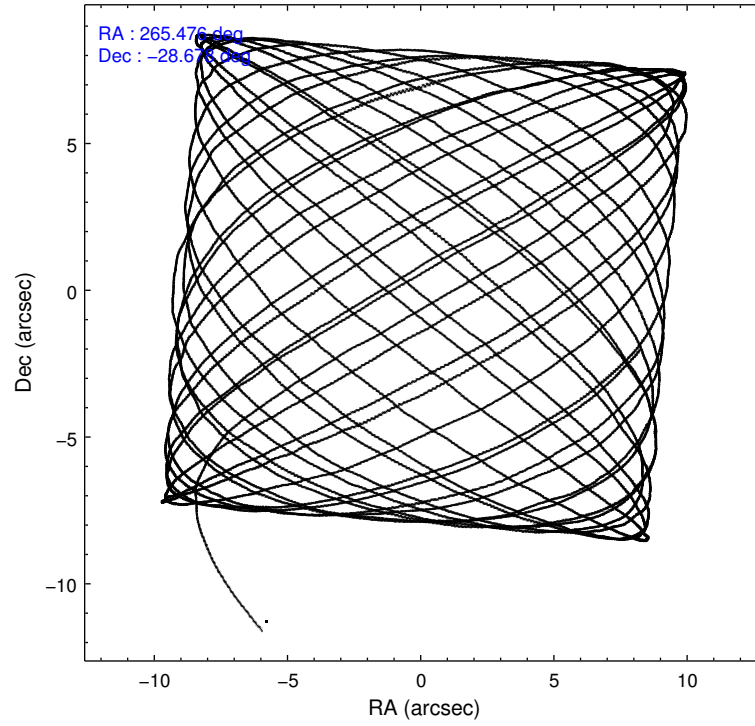
	ccd 0	ccd 1	ccd 2	ccd 3
level 1 events	141552	145871	152169	151553
rejected events	120997	122832	131962	131273
rejected %	85%	84%	86%	86%

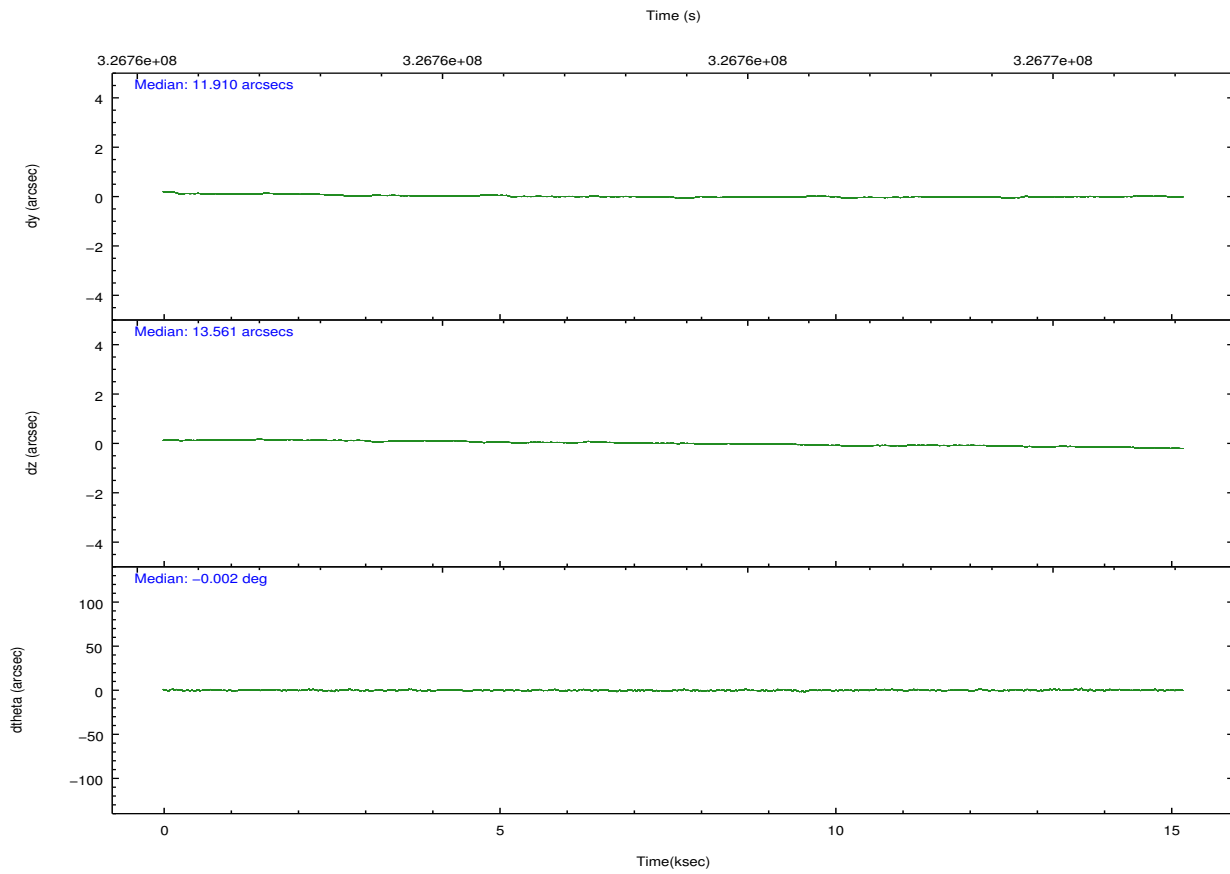
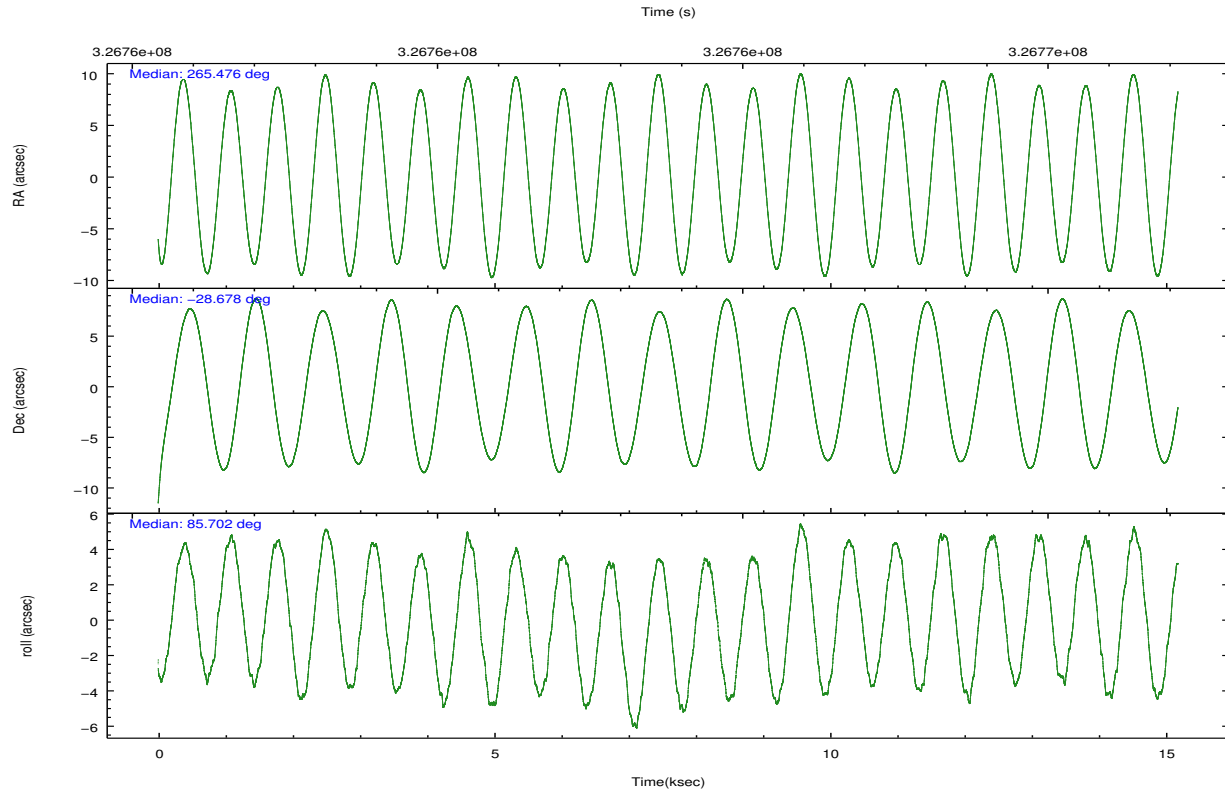
	ccd 0	ccd 1	ccd 2	ccd 3
grade 0 events	9902	11289	10199	10087
	6%	7%	6%	6%
grade 1 events	112	142	111	114
	0%	0%	0%	0%
grade 2 events	4421	4931	4133	3948
	3%	3%	2%	2%
grade 3 events	1908	2025	1731	1799
	1%	1%	1%	1%
grade 4 events	1769	1906	1772	1853
	1%	1%	1%	1%
grade 5 events	6266	6811	6225	7081
	4%	4%	4%	4%
grade 6 events	3434	3854	3208	3432
	2%	2%	2%	2%
grade 7 events	113740	114913	124790	123239
	80%	78%	82%	81%

2.2 Compared Parameters

Parameter	Planned	Actual	Parameter	Planned	Actual
Instrument	ACIS	ACIS	Obspar format version number	7	7
Detector	ACIS-0123	ACIS-0123	Obspar file type	PREDICTED	ACTUAL
Grating	NONE	NONE	Obspar update status	NONE	UPDATED
Data mode	VFAINT	VFAINT	Number of optional ACIS chips dropped	0	0
Observation mode	POINTING	POINTING	On-chip summing requested	N	N
[deg] Pointing RA	265.489562	265.475825295639	Subarray requested	NONE	NONE
[deg] Pointing Dec	-28.702267	-28.6775597407017	Alternating exposures requested	N	N
[deg] Pointing Roll	85.505592	85.70768843094629	[s] Primary exposure time	0.000000	3.1
[mm] SIM focus pos	-0.782348	-0.7809083437167272			
[mm] SIM defocus	0	0.001439871863259334			
[mm] SIM translation stage pos	-233.592463	-233.5874344608287			
[mm] SIM translation stage offset	0	-0.005018542100998502			
[s] Observation start time (MET)	326756359.184000	326755029.04819			
Observation start date	2008-05-09T21:38:14	2008-05-09T21:17:09			
[s] Observation end time (MET)	326771359.184000	326772053.27402			
Observation end date	2008-05-10T01:48:14	2008-05-10T02:00:53			
Read mode	TIMED	TIMED			

2.3 Aspect



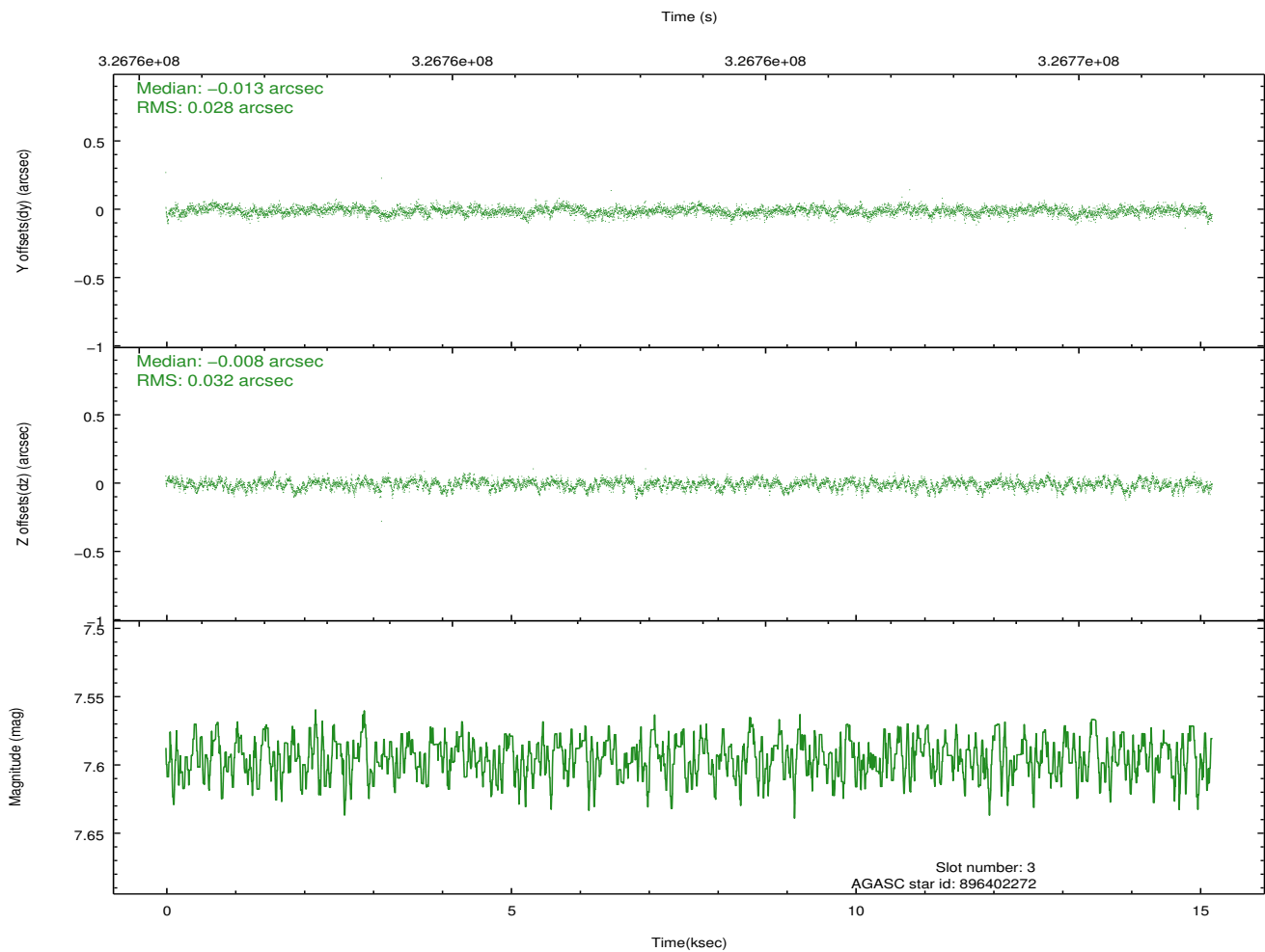
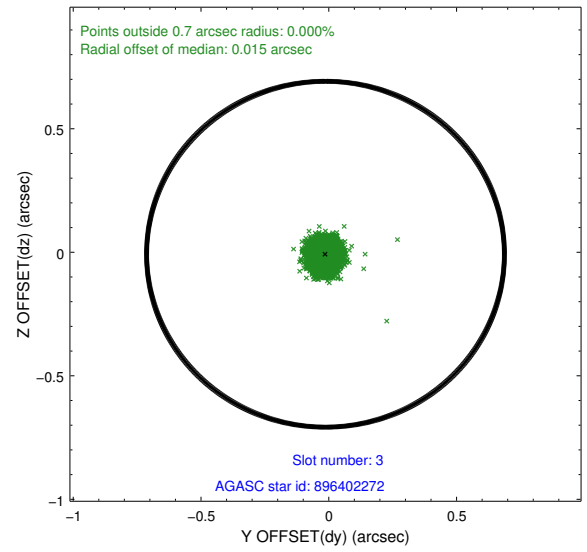
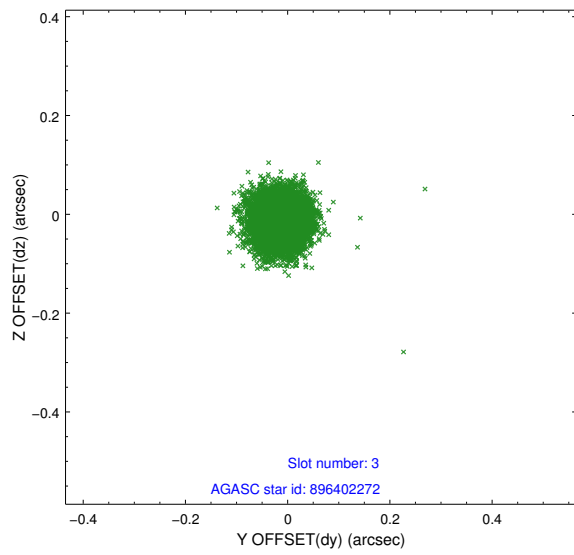


Slot Statistics

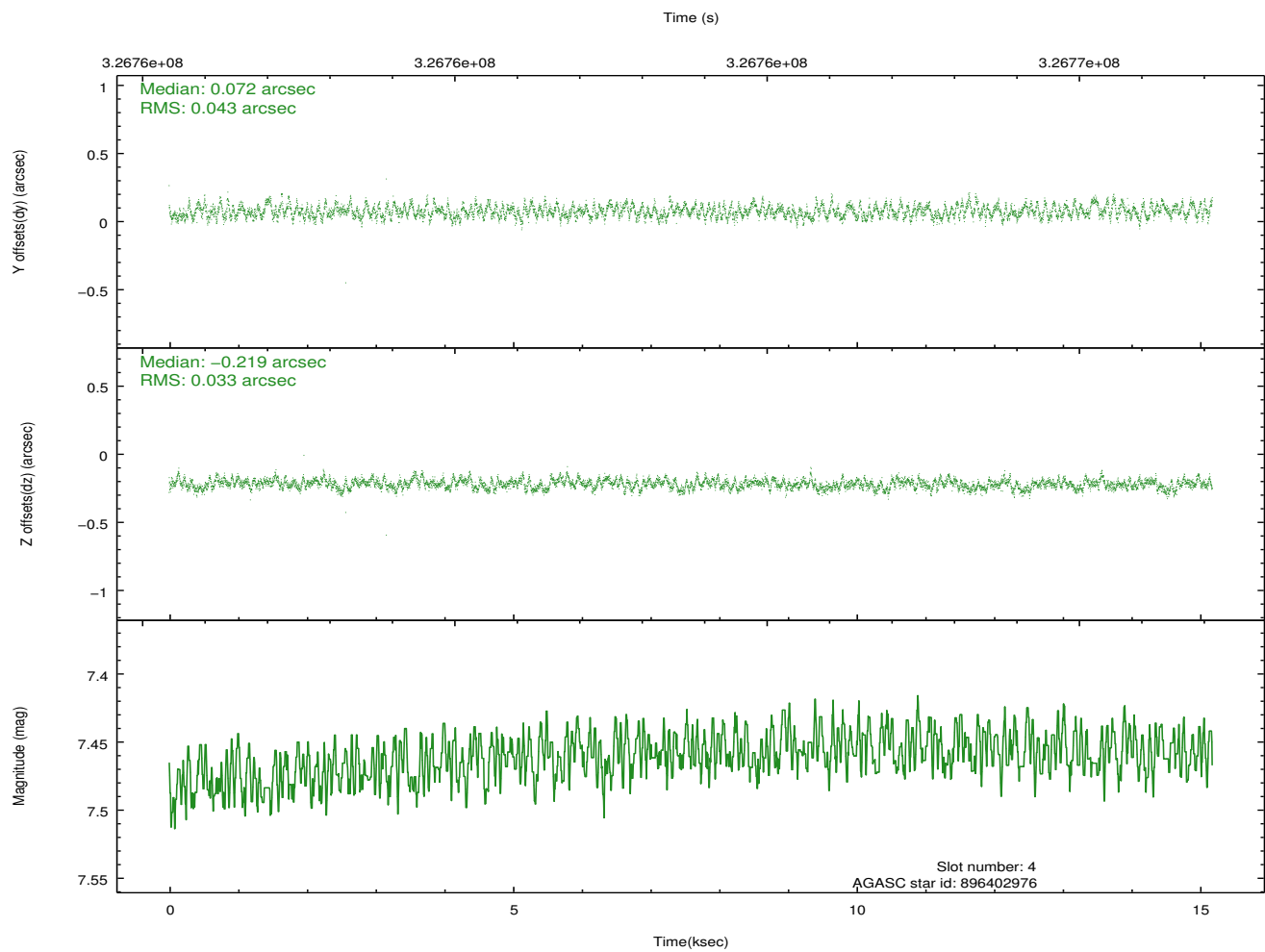
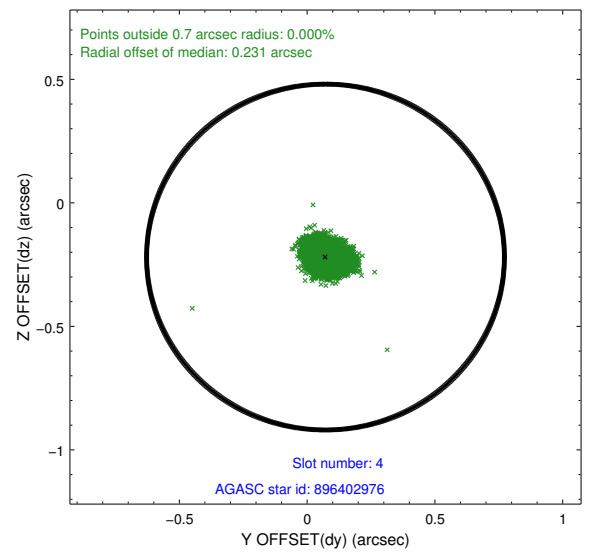
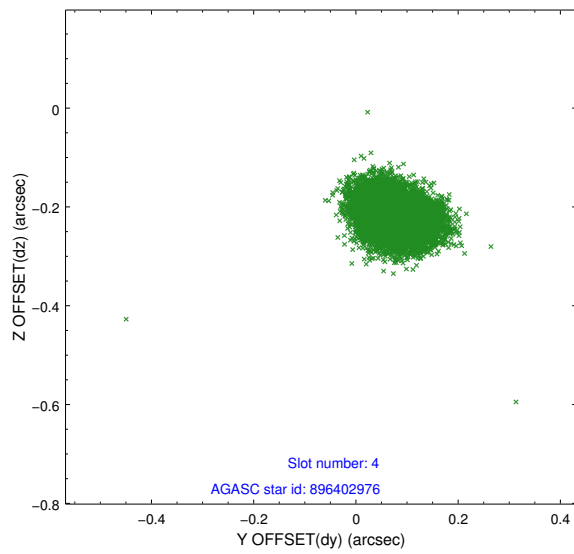
slot	status	id	mag	n_pts	med_dy	med_dz	dr1	dr2	ra	dec	mean_y	mean_z
0	FID	ACIS-I-1	7.02	3703	0.016	0.029	0.009	0.016	0.000000	0.000000	927.64	-837.09
1	FID	ACIS-I-5	7.01	3703	-0.170	0.038	0.008	0.014	0.000000	0.000000	-1820.50	1060.25
2	FID	ACIS-I-6	7.01	3703	0.062	0.003	0.013	0.021	0.000000	0.000000	392.90	1705.06
3	GUIDE	896402272	7.59	7405	-0.013	-0.008	0.045	0.073	265.637294	-28.313189	1433.17	-356.82
4	GUIDE	896402976	7.46	7406	0.072	-0.219	0.058	0.092	265.099474	-28.923203	-890.74	1162.62
5	GUIDE	896404568	7.86	7406	-0.050	-0.067	0.067	0.108	265.687293	-28.431080	1022.07	-547.32
6	GUIDE	896540808	7.49	7407	0.129	0.094	0.054	0.091	265.985401	-29.308604	-2056.60	-1723.24
7	GUIDE	896538696	6.90	7406	-0.140	0.204	0.051	0.081	266.298470	-28.325572	1544.45	-2449.76

2.4 Star Slots

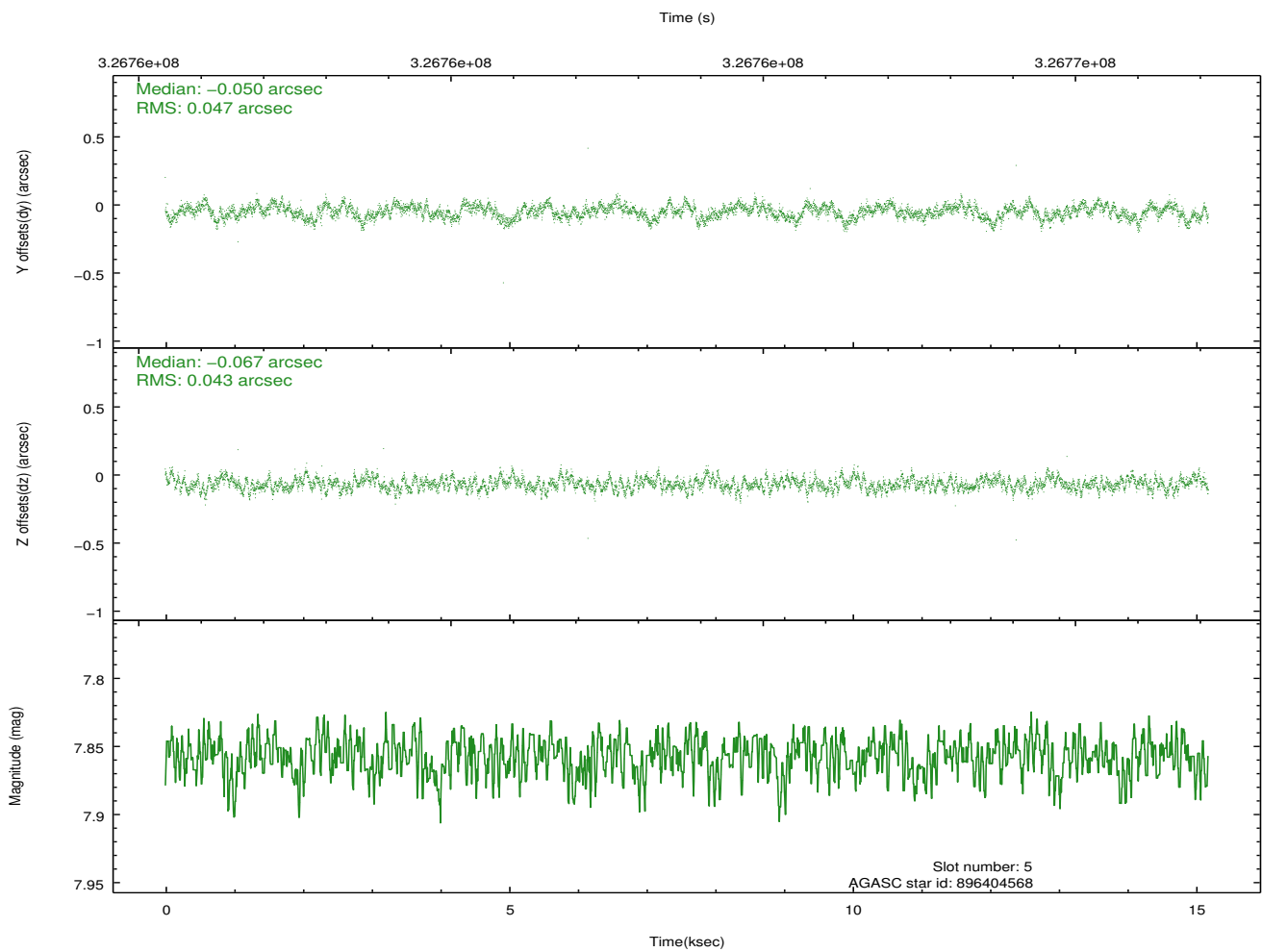
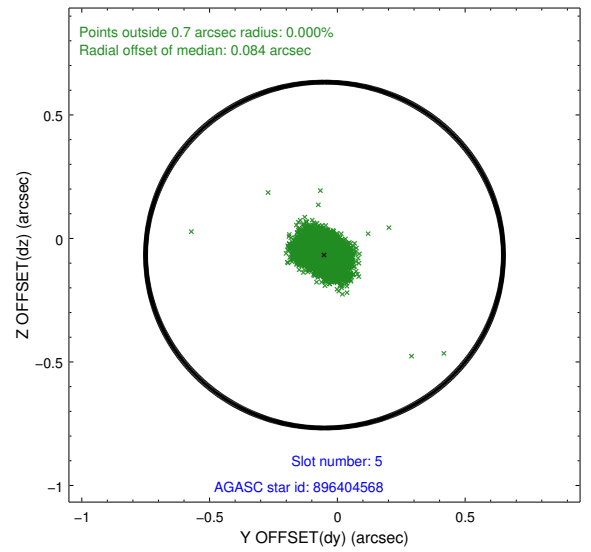
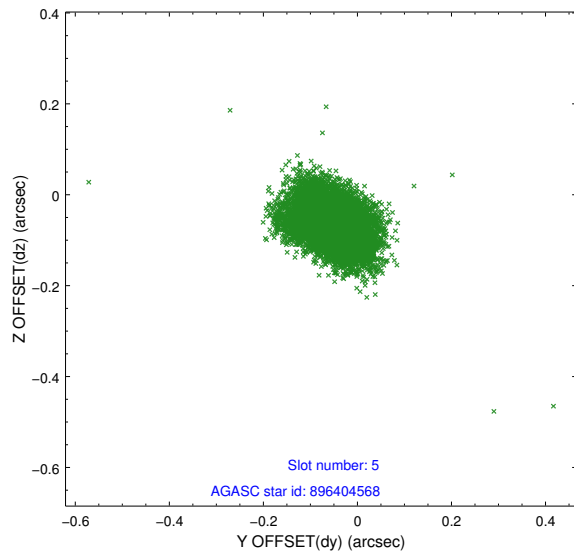
2.4.1 Slot 3



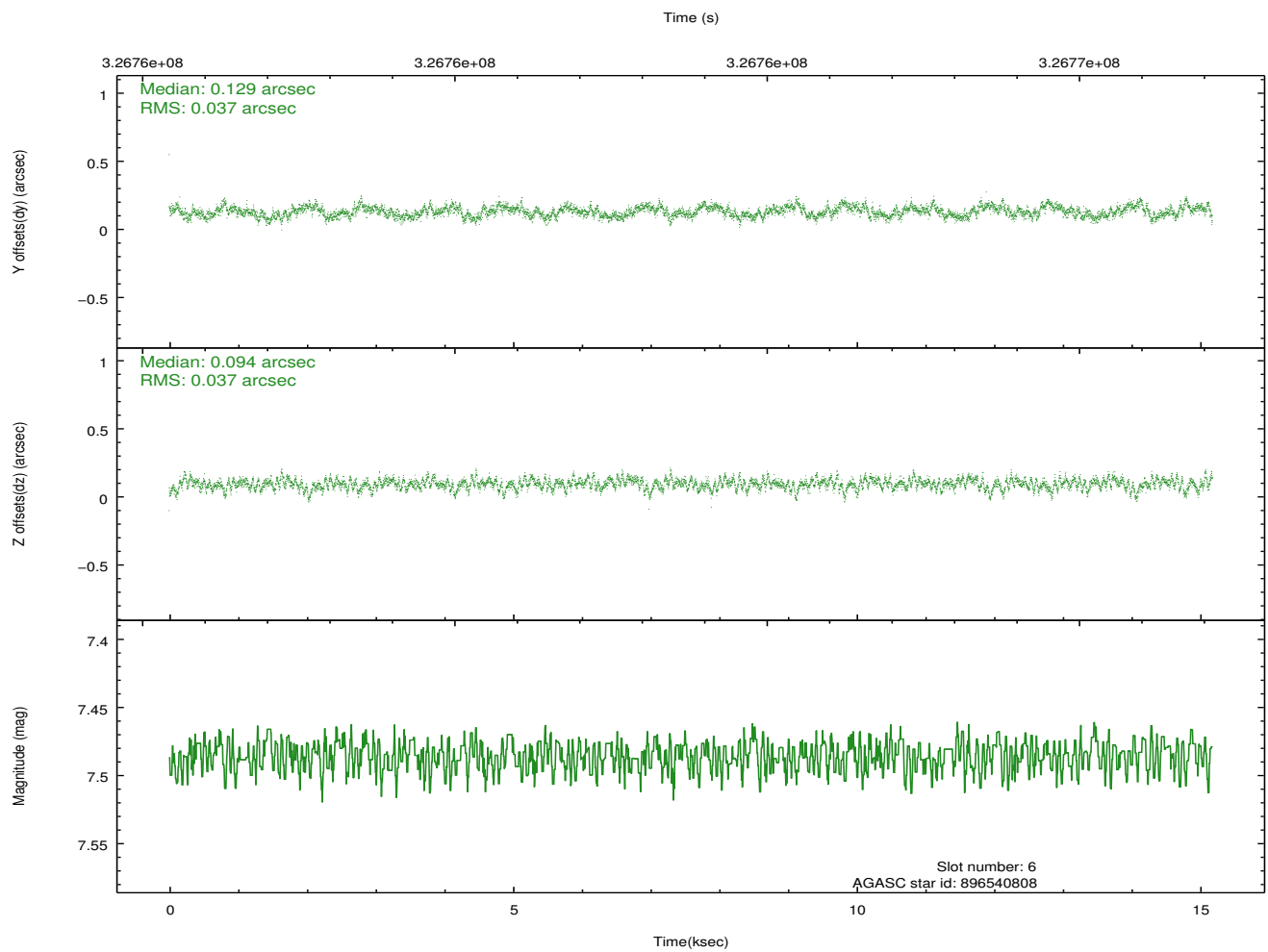
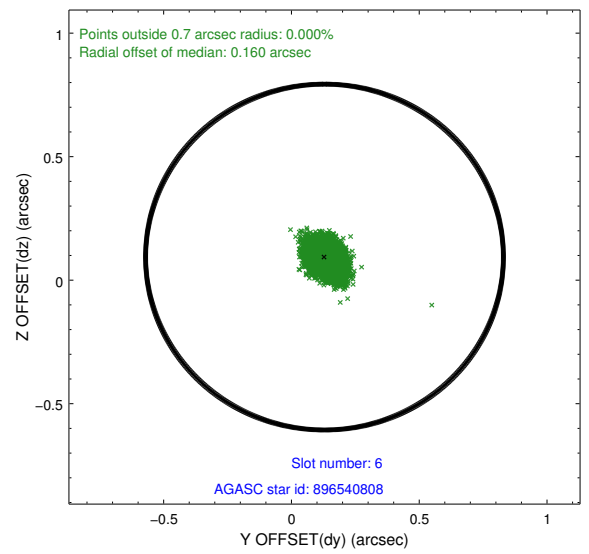
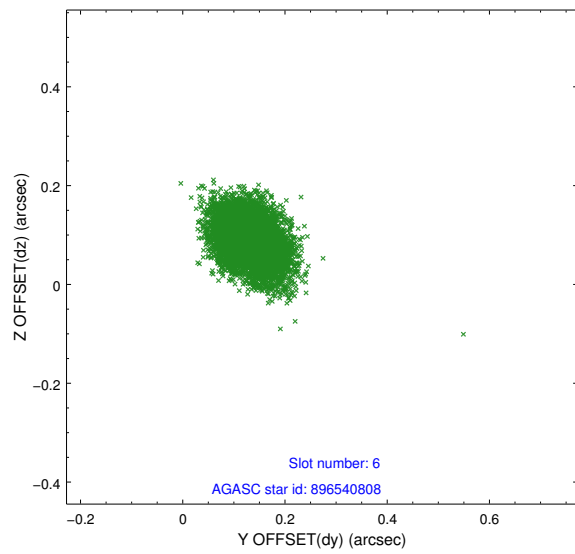
2.4.2 Slot 4



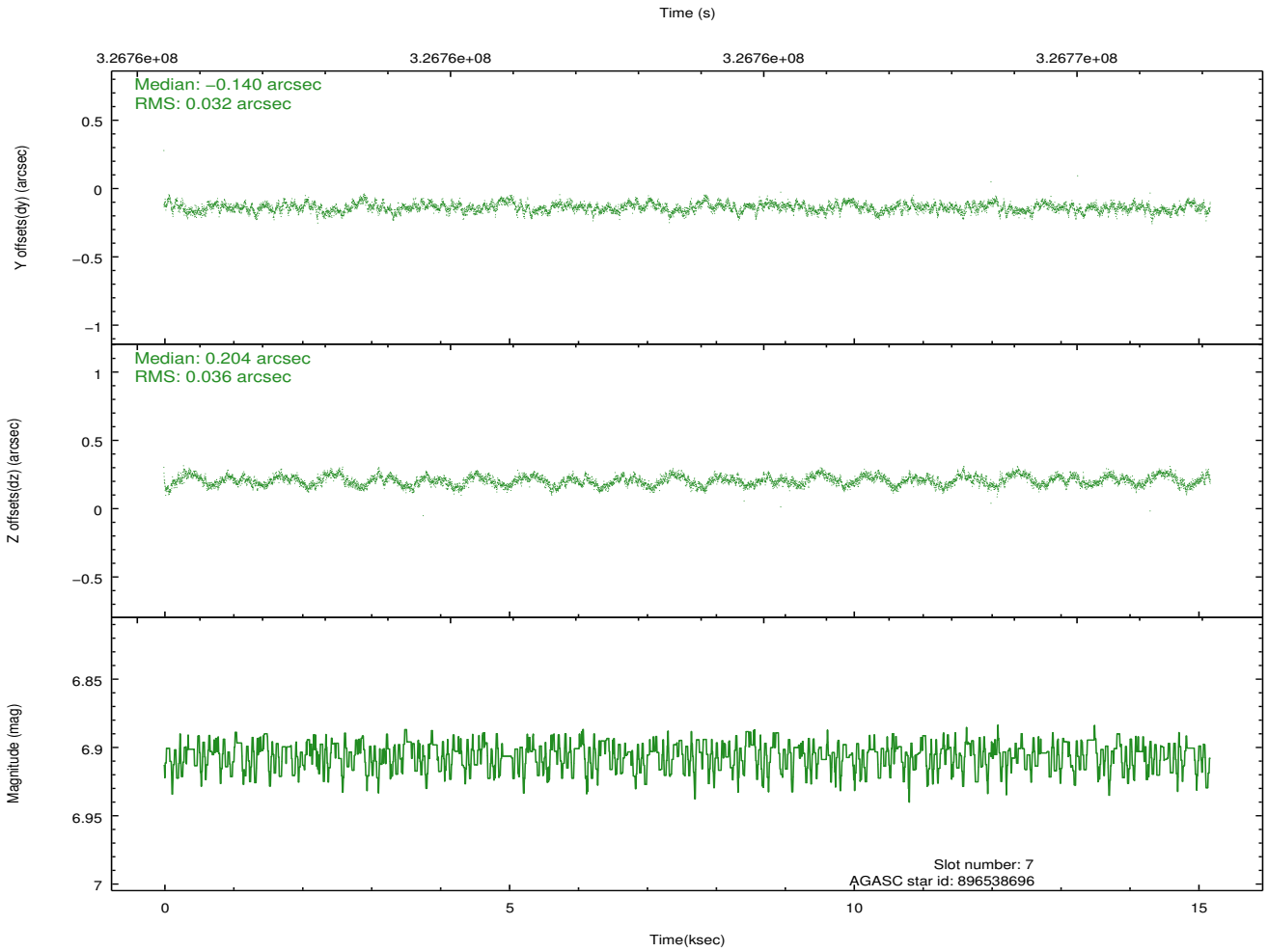
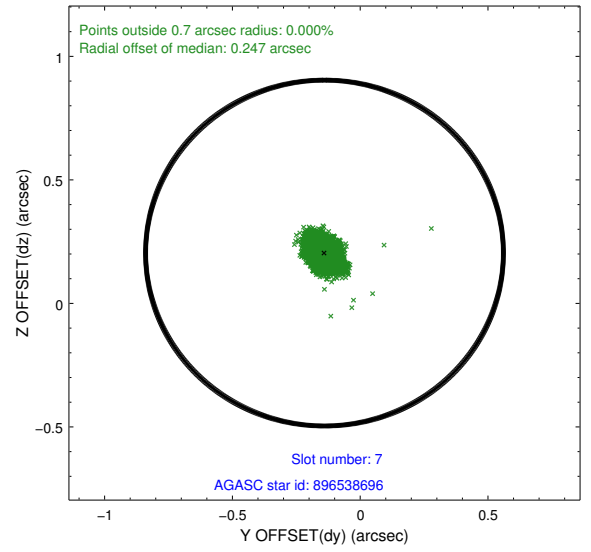
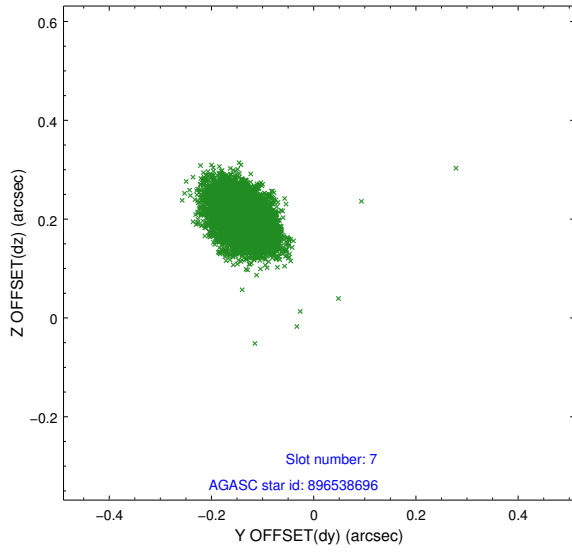
2.4.3 Slot 5



2.4.4 Slot 6

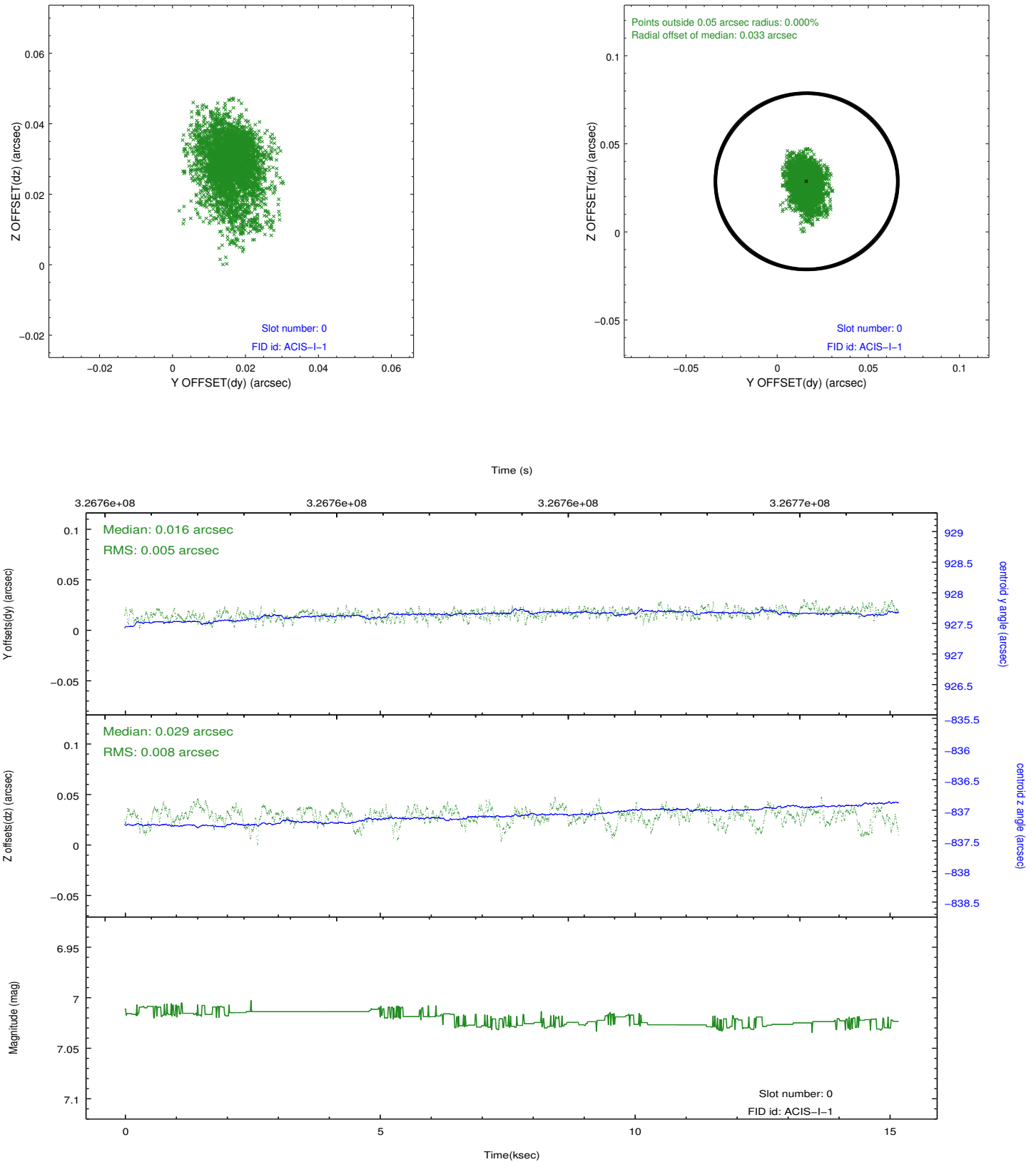


2.4.5 Slot 7

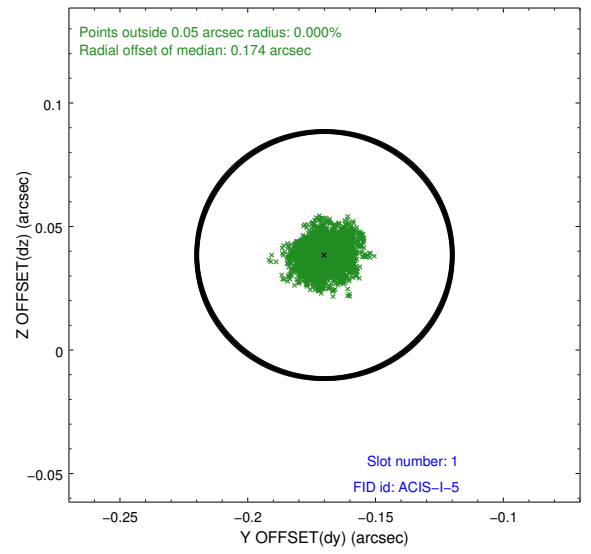
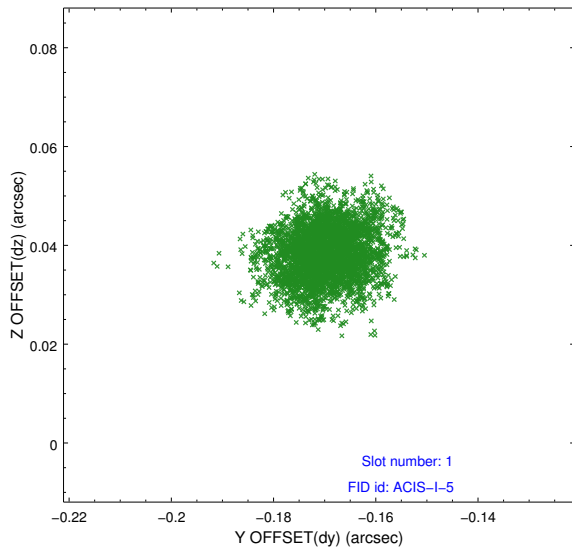


2.5 FID Slots

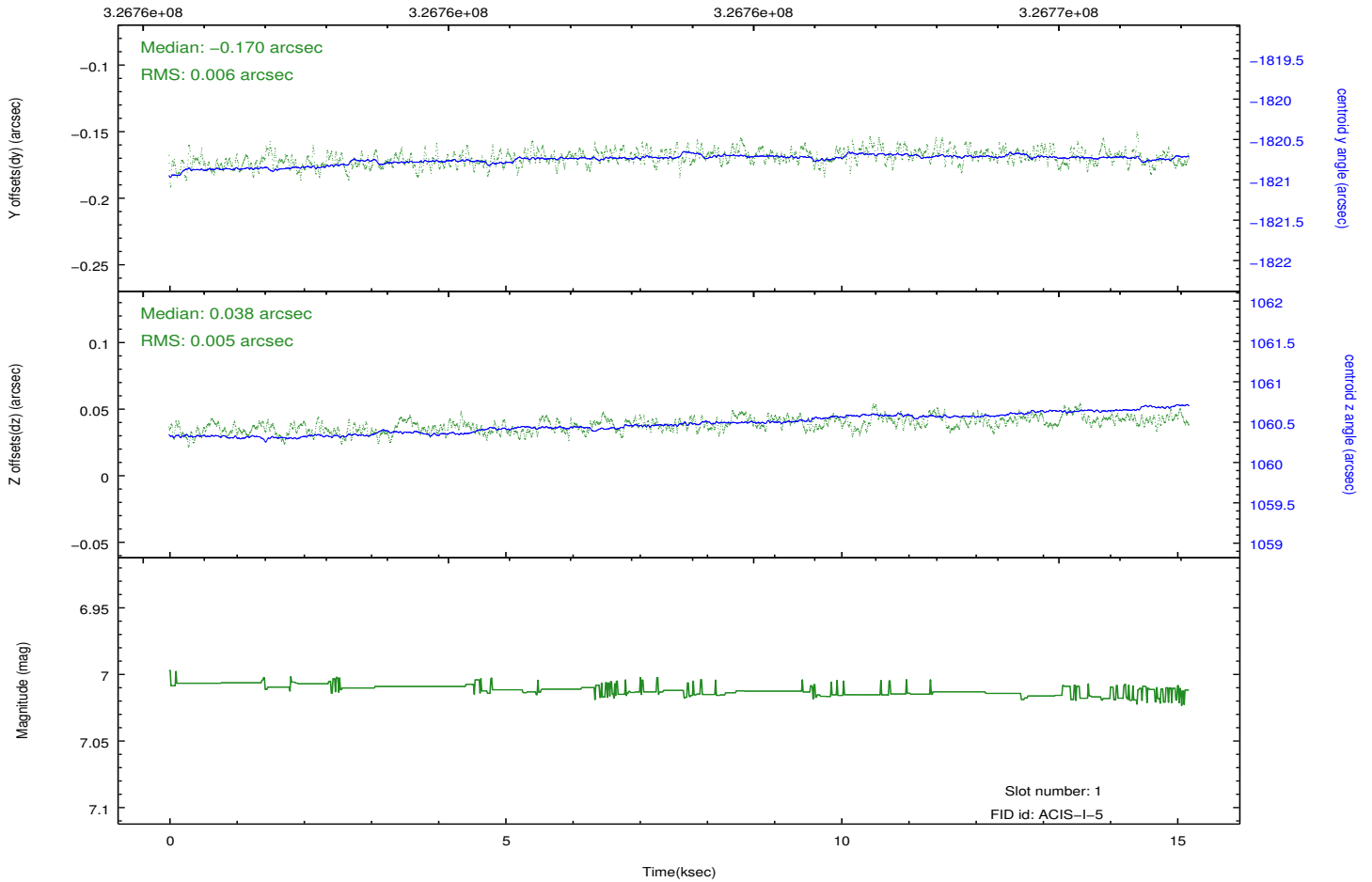
2.5.1 Slot 0



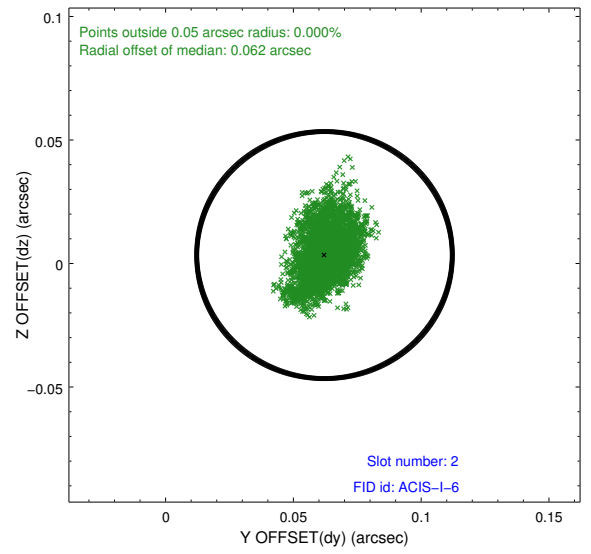
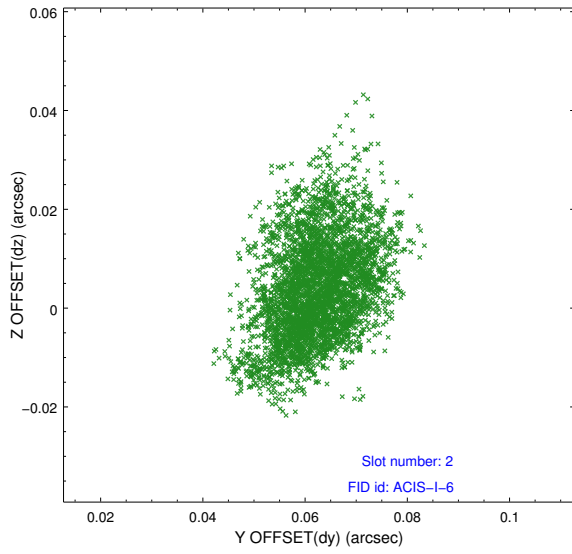
2.5.2 Slot 1



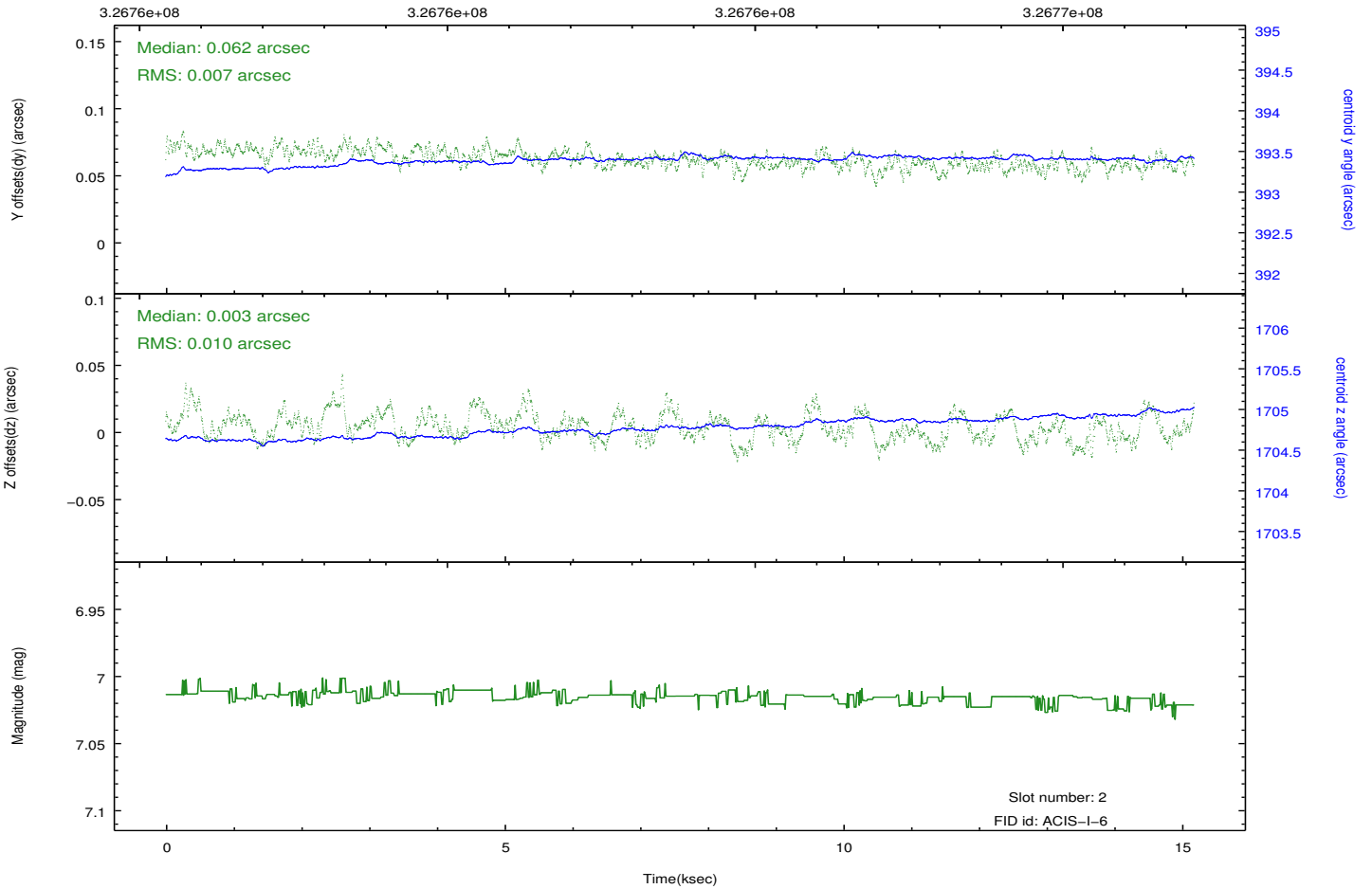
Time (s)



2.5.3 Slot 2



Time (s)



A Summary

A.1 Status

V&V Scientist	Beth Sundheim
V&V Date (YYYY-MM-DD)	2012.05.16
V&V Edition	1
V&V Disposition and Status	OK
V&V Charge Time	15.1776001

A.2 Comments

Joint proposal with NOAO.