

V&V Reference Report

L2 ASCDS Version : 8.4.4

Observation 9735 - L2 Version 2
Chandra X-Ray Center

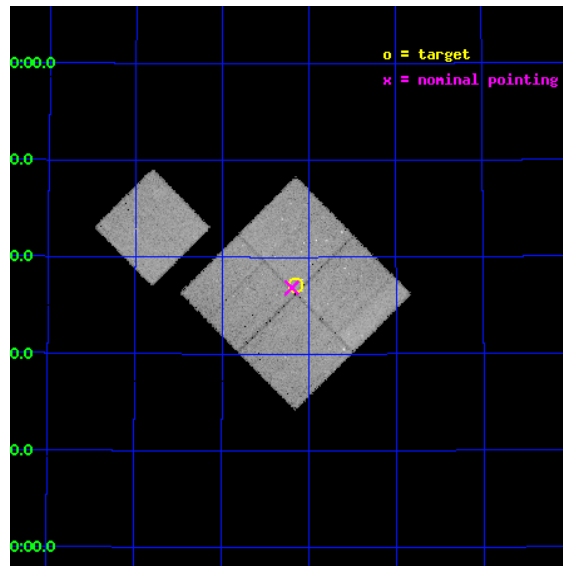
L2 Processing Date : May 21 2012

Contents

1	Front	2
2	OBI	3
2.1	OBI	3
2.1.1	Images	3
2.1.2	Bias	3
2.1.3	Parameters	4
2.1.4	Events	4
2.2	Compared Parameters	5
2.3	Aspect	6
2.4	Star Slots	9
2.4.1	Slot 3	9
2.4.2	Slot 4	10
2.4.3	Slot 5	11
2.4.4	Slot 6	12
2.4.5	Slot 7	13
2.5	FID Slots	14
2.5.1	Slot 0	14
2.5.2	Slot 1	15
2.5.3	Slot 2	16
A	Summary	17
A.1	Status	17
A.2	Comments	17

1 Front

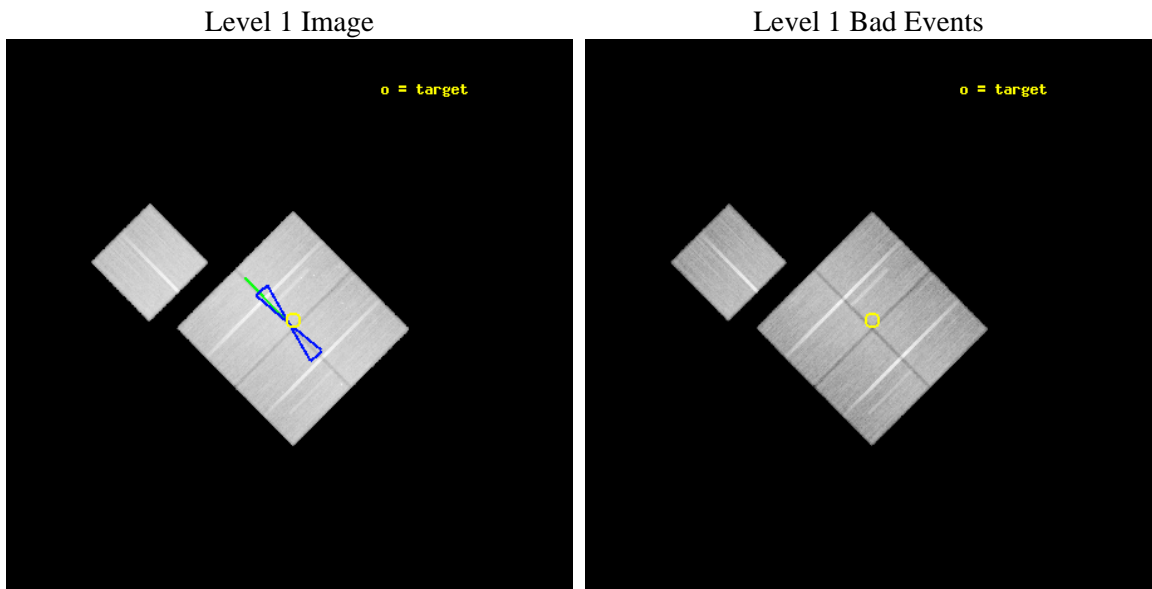
seq_num	900798	Sequence number
obs_id	9735	Observation id
title	The Evolution of Faint AGN at High Redshift	Proposal title
observer	Prof Kirpal Nandra	Principal investigator
object	AEGIS-3	Source name
dtcycle	0	
cycle	P	events from which exps? Prim/Second/Both
ra_targ	214.5375	Observer's specified target RA [deg]
dec_targ	52.617889	Observer's specified target Dec [deg]
ra_nom	214.54929890232	Nominal RA [deg]
dec_nom	52.614153844066	Nominal Dec [deg]
roll_nom	315.19931307123	Nominal Roll [deg]
revision	2	Processing version of data
ontime	50126.836524308	Sum of GTIs [s]
livetime	49471.892502277	Livetime [s]
ontime0	50133.118365169	Sum of GTIs [s]
ontime1	50120.554493785	Sum of GTIs [s]
ontime2	50129.977444947	Sum of GTIs [s]
ontime3	50126.836524308	Sum of GTIs [s]
ontime6	50133.118424952	Sum of GTIs [s]
l2events	176723	Number of level 2 events



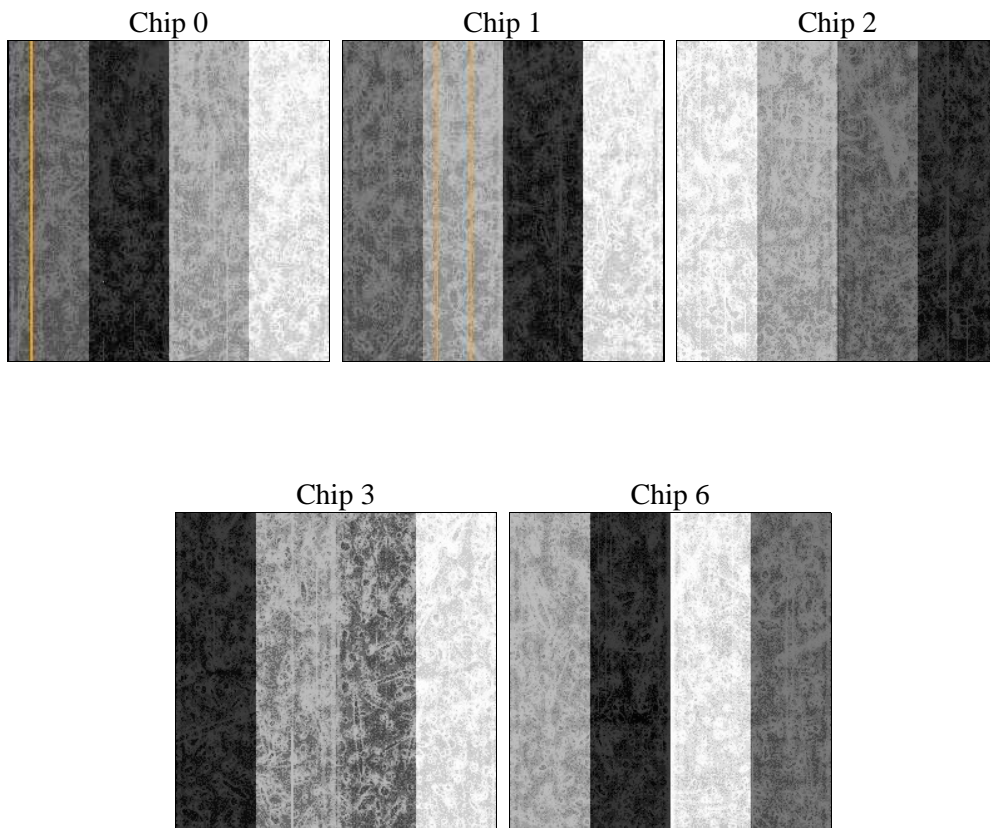
2 OBI

2.1 OBI

2.1.1 Images



2.1.2 Bias



2.1.3 Parameters

obi_num	0	Obi number	sched_exp_time	50000.000000	[s] Scheduled observation exposure time
ascdsver	8.4.4	Processing system revision	ontime	50126.836524308	Sum of GTIs [s]
caldsver	4.4.9	 	ontime0	50133.118365169	Sum of GTIs [s]
date	2012-05-21T11:26:13	Date and time of file creation	ontime1	50120.554493785	Sum of GTIs [s]
revision	2	Processing version of data	ontime2	50129.977444947	Sum of GTIs [s]
			ontime3	50126.836524308	Sum of GTIs [s]
			ontime6	50133.118424952	Sum of GTIs [s]
			l1events	2057767	Number of level 1 events

2.1.4 Events

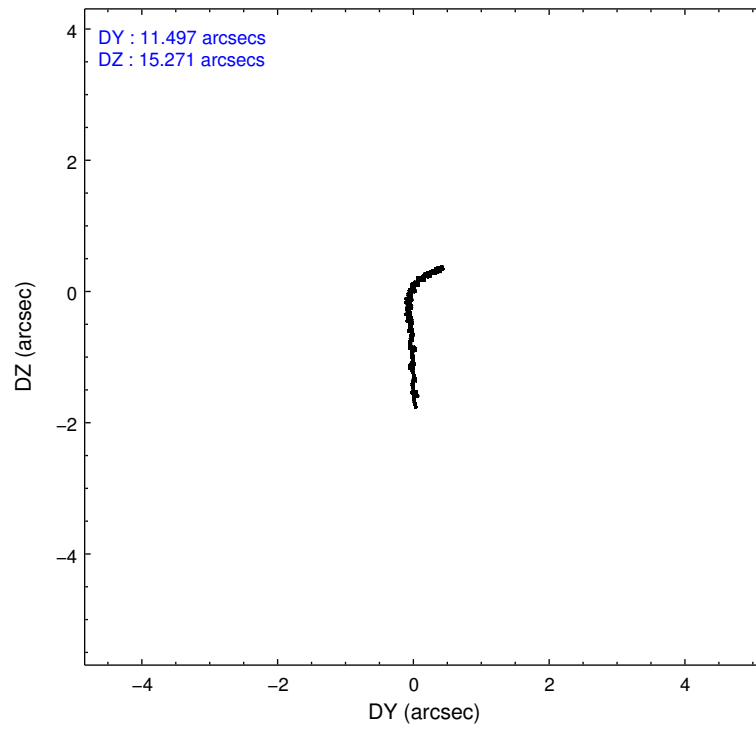
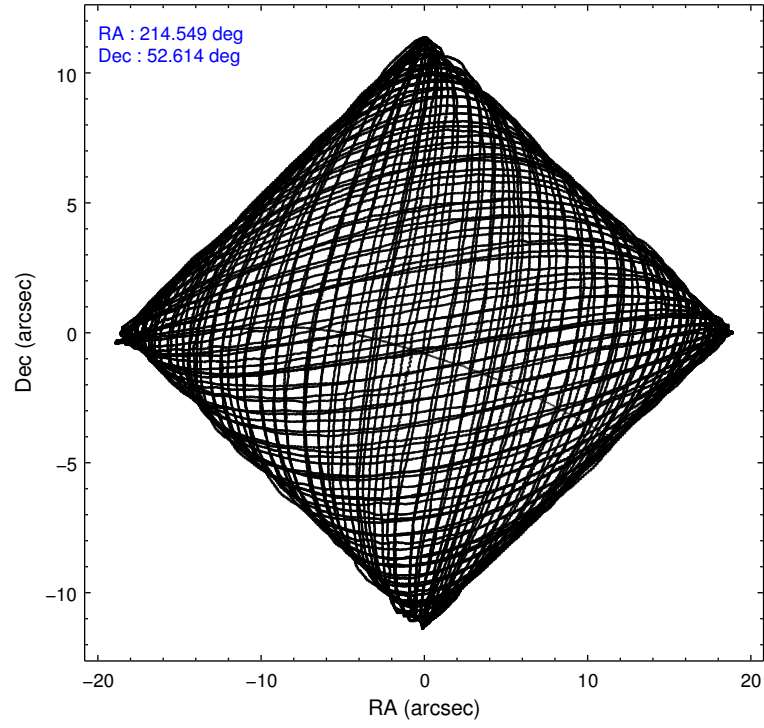
	ccd 0	ccd 1	ccd 2	ccd 3	ccd 6
level 1 events	385178	394928	442327	417775	417559
rejected events	343253	347915	401361	376876	375019
rejected %	89%	88%	90%	90%	89%

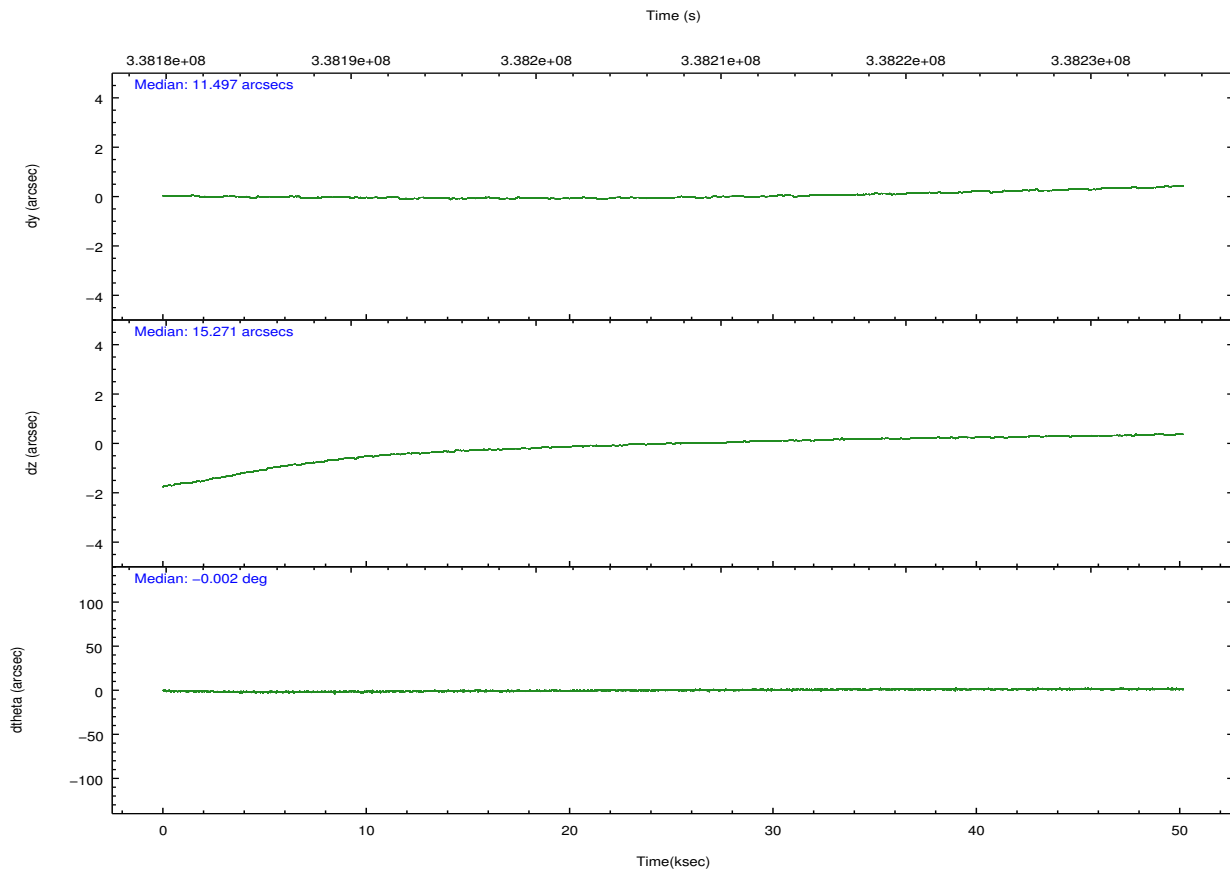
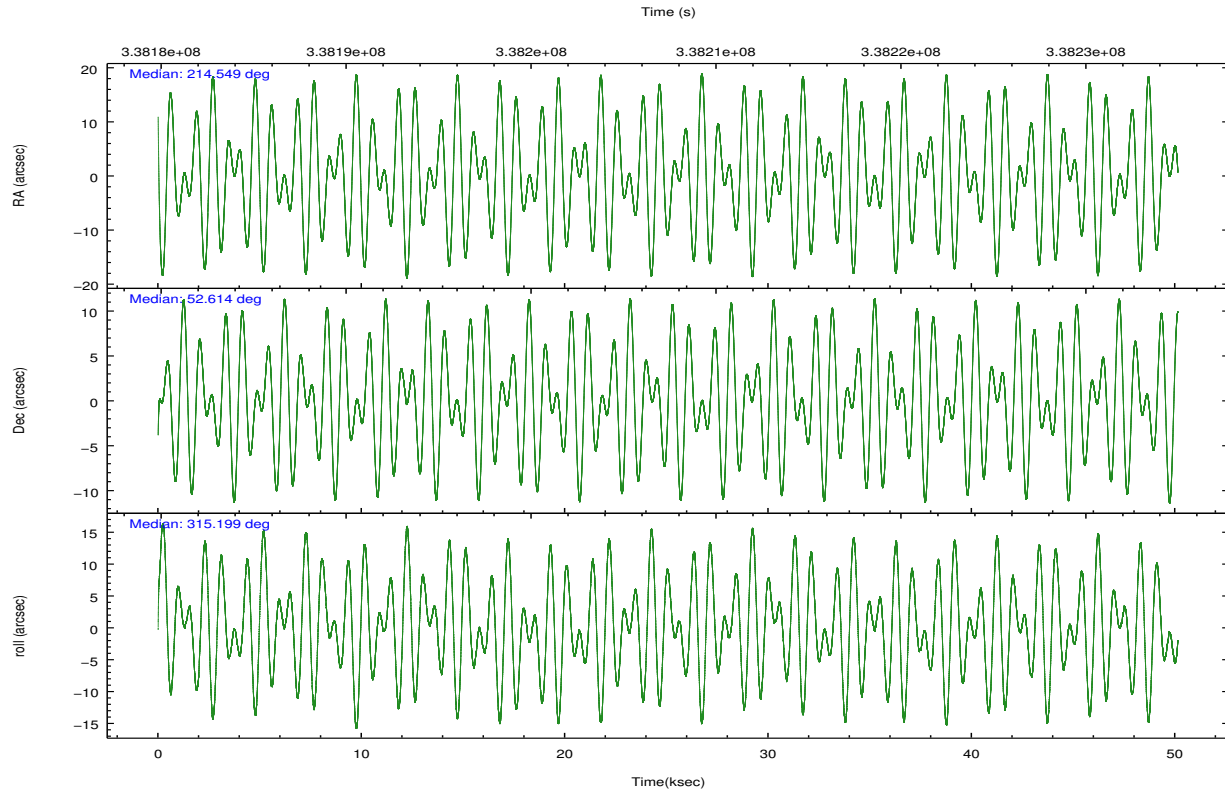
	ccd 0	ccd 1	ccd 2	ccd 3	ccd 6
grade 0 events	14724	17232	14562	14936	14606
	3%	4%	3%	3%	3%
grade 1 events	221	219	232	276	222
	0%	0%	0%	0%	0%
grade 2 events	10509	10899	10228	9053	9719
	2%	2%	2%	2%	2%
grade 3 events	4699	5014	4406	4584	4746
	1%	1%	0%	1%	1%
grade 4 events	4327	4895	4655	4484	4688
	1%	1%	1%	1%	1%
grade 5 events	15015	16606	13961	17469	16997
	3%	4%	3%	4%	4%
grade 6 events	8106	9462	7552	8315	9213
	2%	2%	1%	1%	2%
grade 7 events	327577	330601	386731	358658	357368
	85%	83%	87%	85%	85%

2.2 Compared Parameters

Parameter	Planned	Actual	Parameter	Planned	Actual
Instrument	ACIS	ACIS	Obspar format version number	7	7
Detector	ACIS-01236	ACIS-01236	Obspar file type	PREDICTED	ACTUAL
Grating	NONE	NONE	Obspar update status	NONE	UPDATED
Data mode	VFAINT	VFAINT	CCD I0 on	Y	Y
Observation mode	POINTING	POINTING	CCD I1 on	Y	Y
[deg] Pointing RA	214.505473	214.5492989023246	CCD I2 on	Y	Y
[deg] Pointing Dec	52.621071	52.61415384406566	CCD I3 on	Y	Y
[deg] Pointing Roll	315.025452	315.1993130712283	CCD S0 on	N	N
[deg] Roll angle	50.000000	50.000000	CCD S1 on	N	N
[deg] Roll tolerance	10.000000	10.000000	CCD S2 on	O1	Y
Roll constraint allows 180D rotation	Y	Y	CCD S3 on	N	N
[mm] SIM focus pos	-0.782348	-0.7809083437167272	CCD S4 on	N	N
[mm] SIM defocus	0	0.001439871863259334	CCD S5 on	N	N
[mm] SIM translation stage pos	-233.592463	-233.5874344608287	Number of optional ACIS chips dropped	0	0
[mm] SIM translation stage offset	0	-0.005018542100998502	On-chip summing requested	N	N
[s] Observation start time (MET)	338182495.184000	338181255.82994	Subarray requested	NONE	NONE
Observation start date	2008-09-19T03:33:50	2008-09-19T03:14:15	Alternating exposures requested	N	N
[s] Observation end time (MET)	338232495.184000	338233559.02001	[s] Primary exposure time	0.000000	3.1
Observation end date	2008-09-19T17:27:10	2008-09-19T17:45:59			
Read mode	TIMED	TIMED			

2.3 Aspect



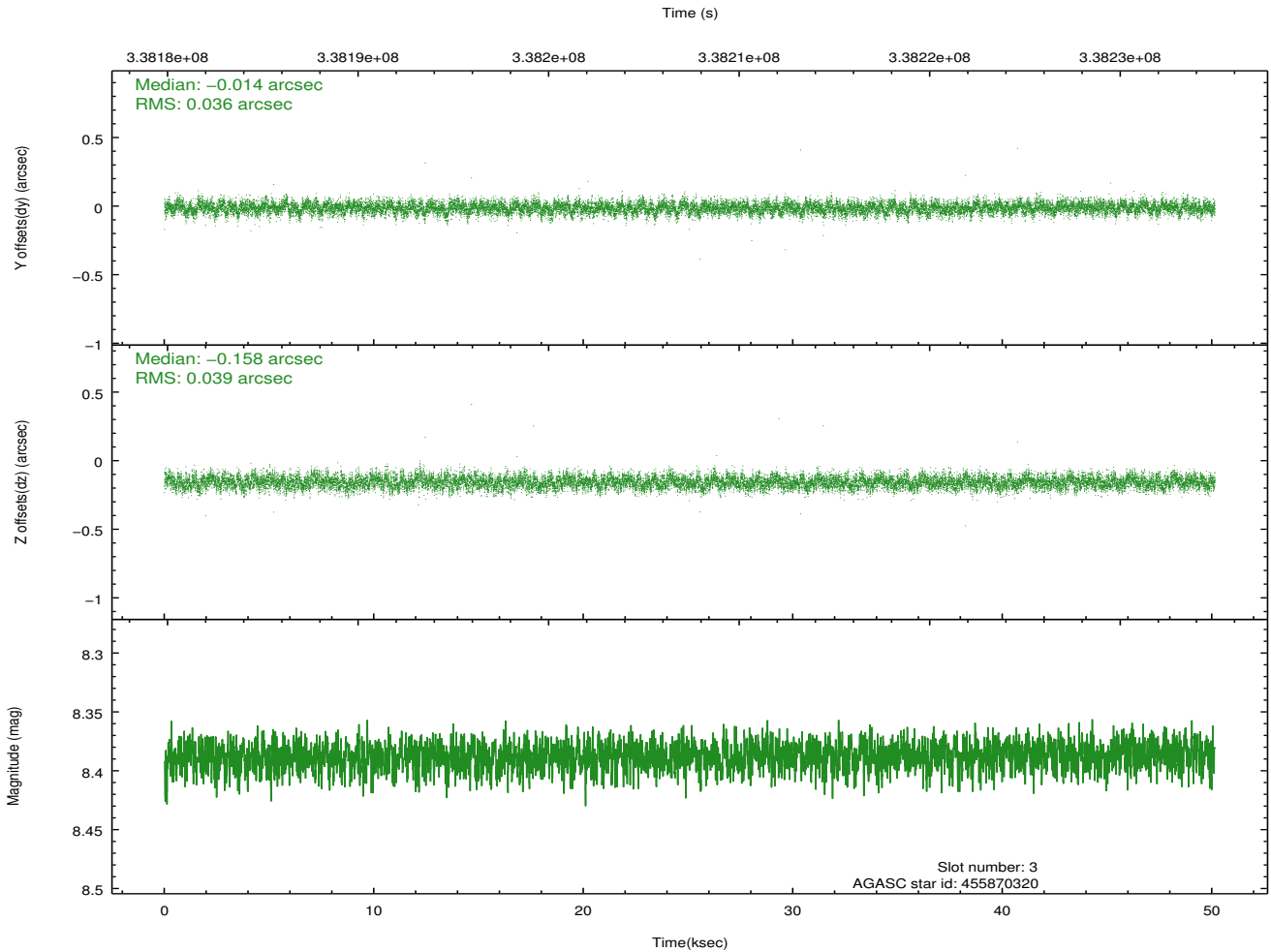
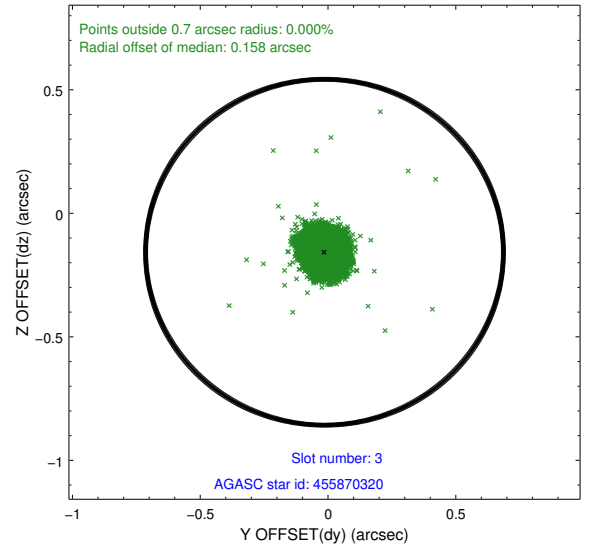
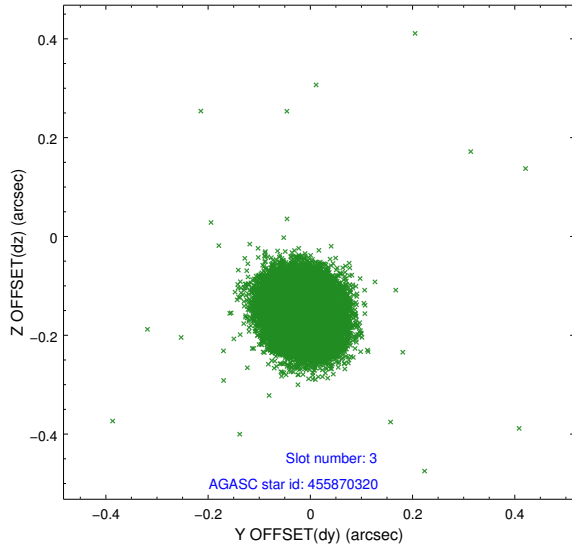


Slot Statistics

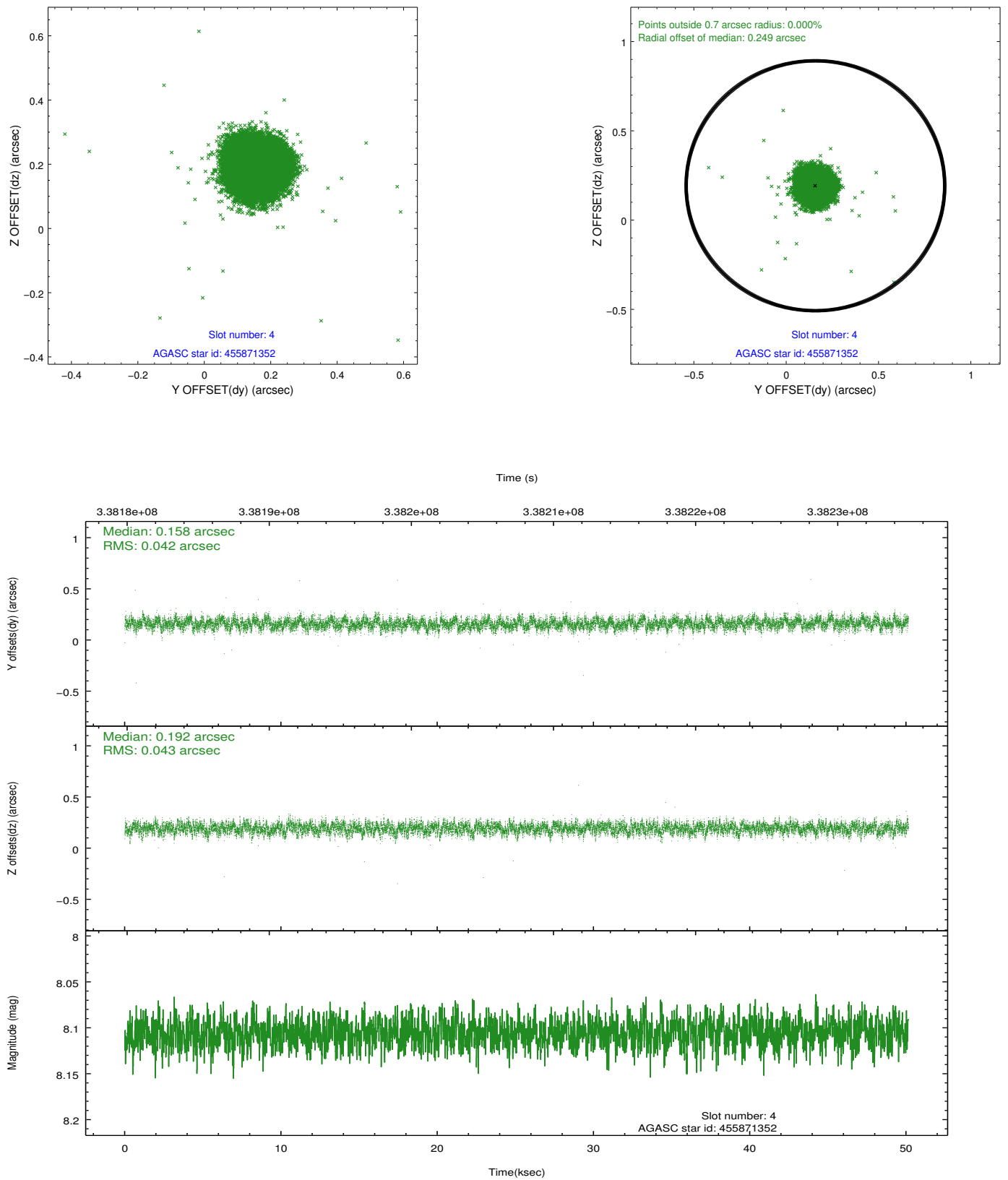
slot	status	id	mag	n_pts	med_dy	med_dz	dr1	dr2	ra	dec	mean_y	mean_z
0	FID	ACIS-I-1	6.99	12231	0.004	0.020	0.016	0.027	0.000000	0.000000	928.00	-838.67
1	FID	ACIS-I-5	6.98	12227	-0.137	0.032	0.009	0.016	0.000000	0.000000	-1820.26	1058.84
2	FID	ACIS-I-6	6.99	12231	0.042	0.020	0.013	0.030	0.000000	0.000000	393.61	1703.31
3	GUIDE	455870320	8.39	24448	-0.014	-0.158	0.056	0.090	214.874440	52.401638	1130.59	15.53
4	GUIDE	455871352	8.11	24446	0.158	0.192	0.064	0.100	215.099961	52.172669	2066.12	-209.96
5	GUIDE	505806936	7.01	24460	-0.070	-0.141	0.072	0.119	213.820815	52.535927	-848.64	-1271.33
6	GUIDE	505812088	8.13	24452	-0.035	-0.105	0.065	0.104	214.186617	53.263562	-2121.40	1152.15
7	GUIDE	504894728	8.81	24443	-0.044	0.211	0.067	0.109	213.220892	52.722550	-2257.06	-1703.06

2.4 Star Slots

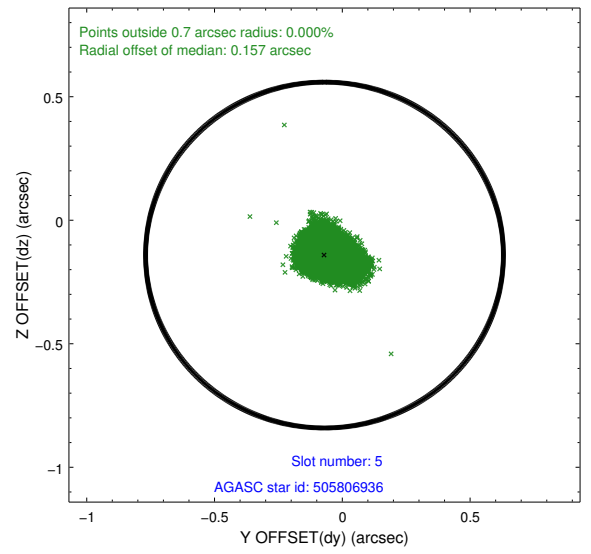
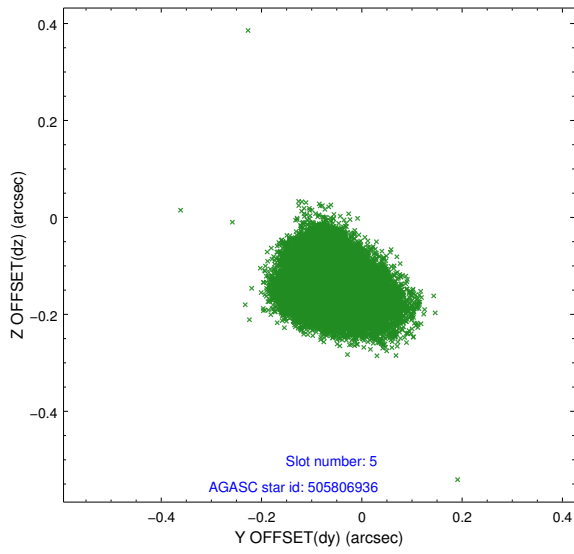
2.4.1 Slot 3



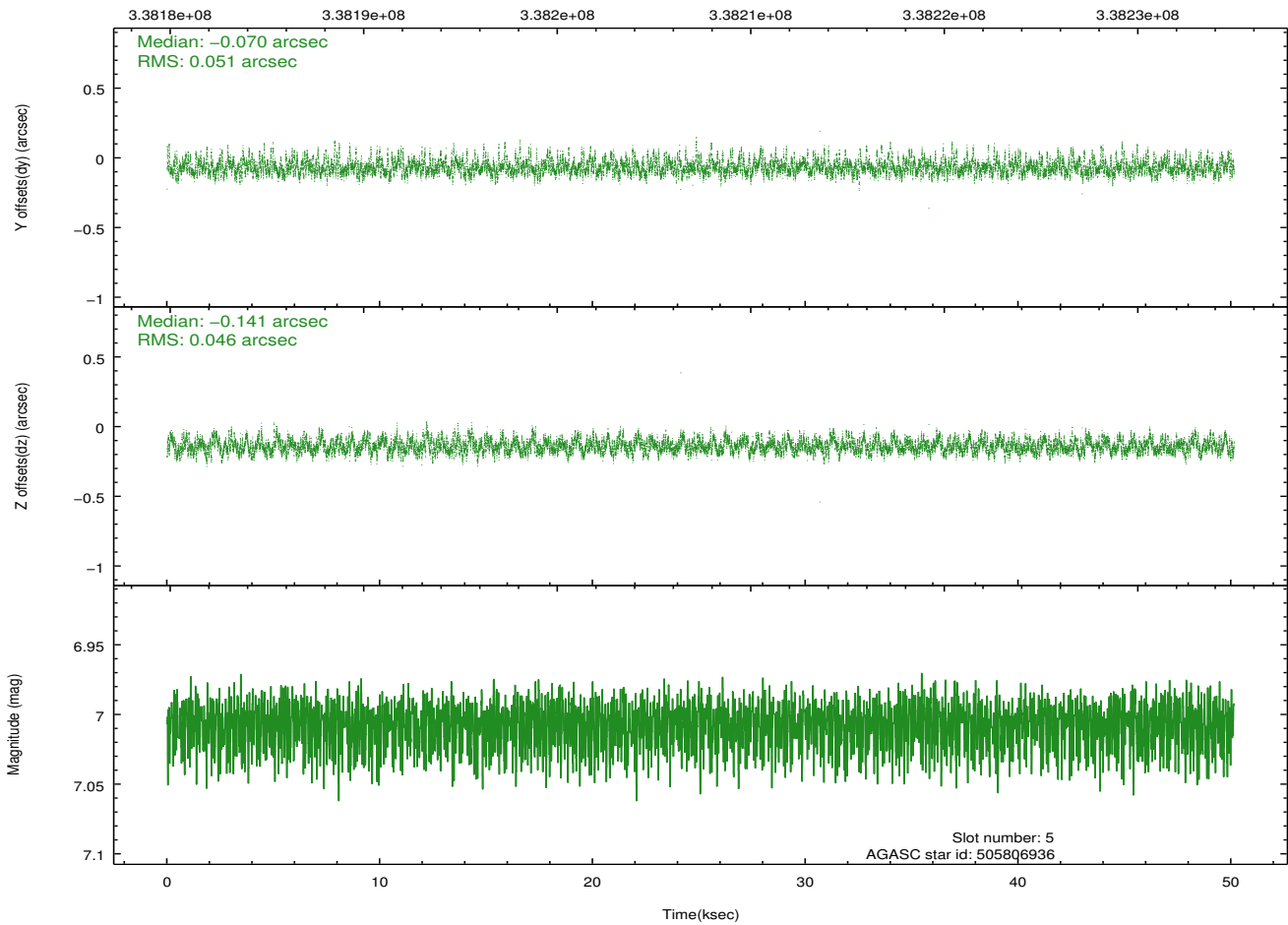
2.4.2 Slot 4



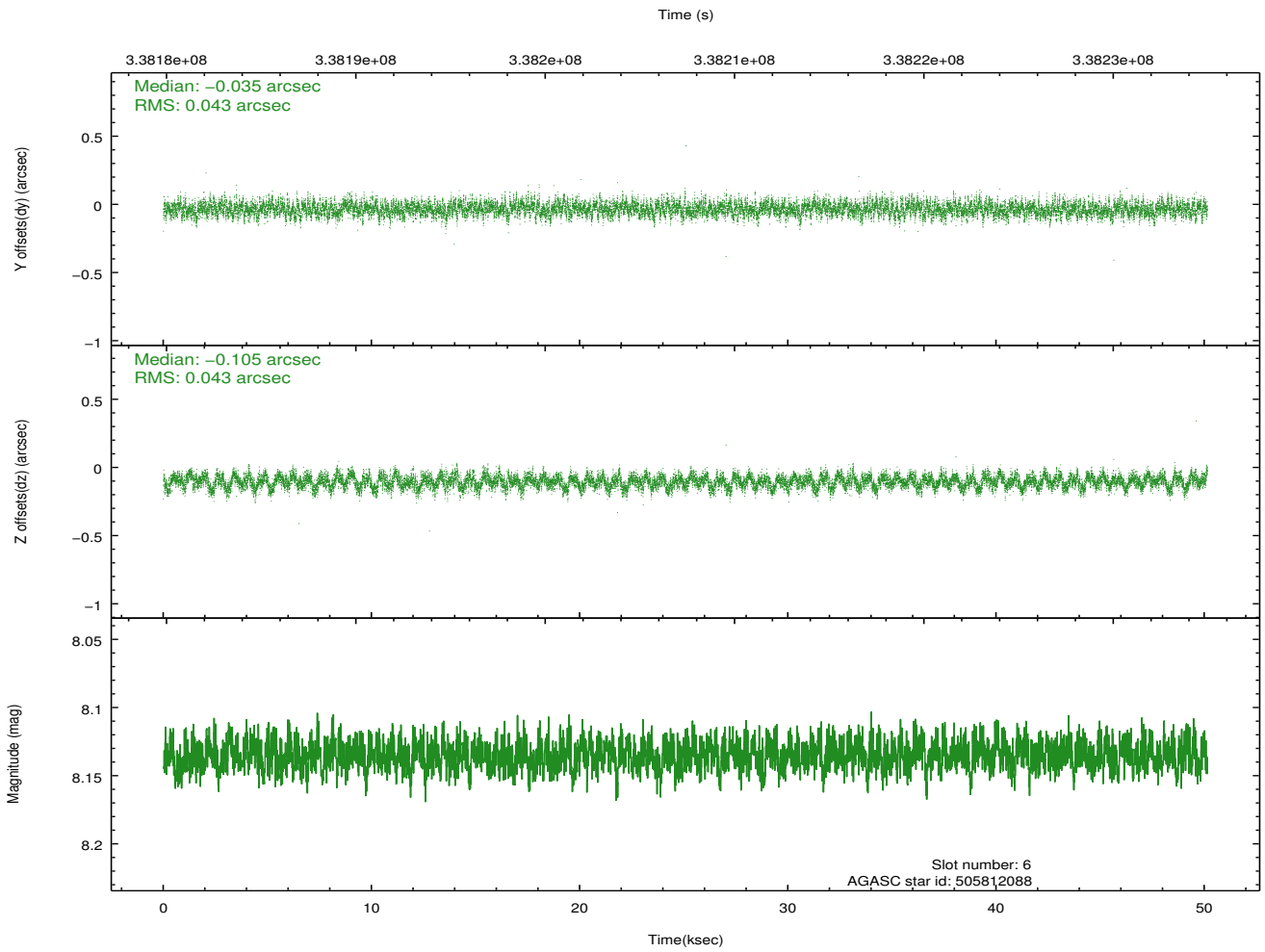
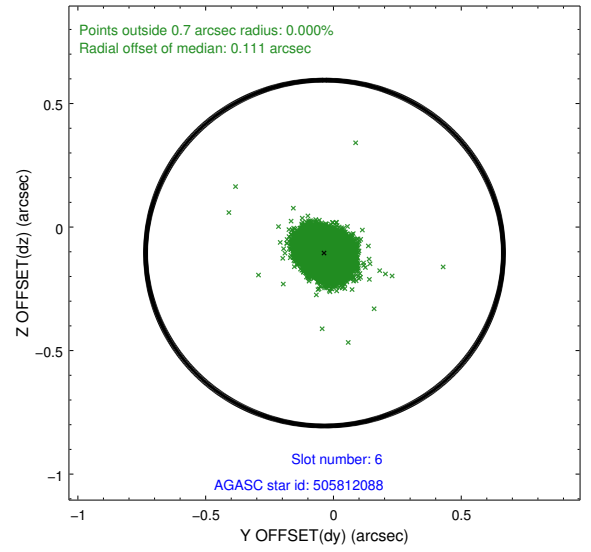
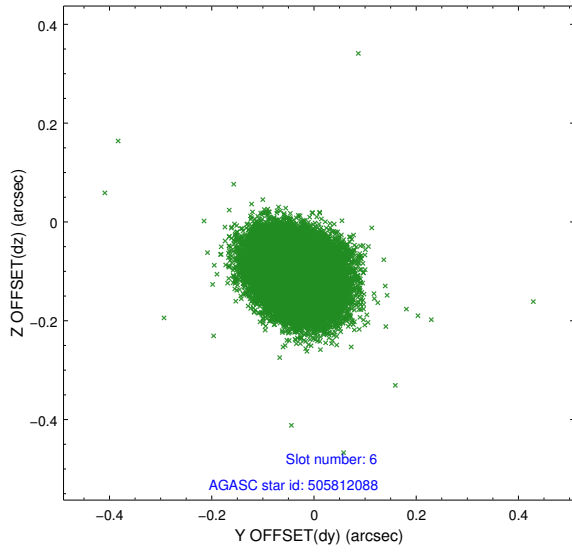
2.4.3 Slot 5



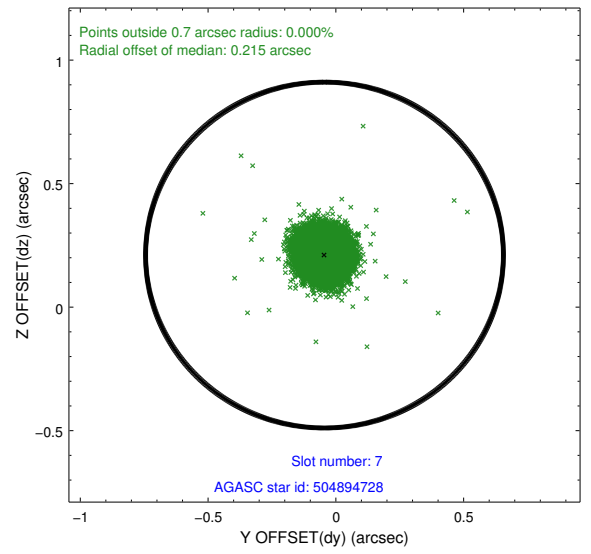
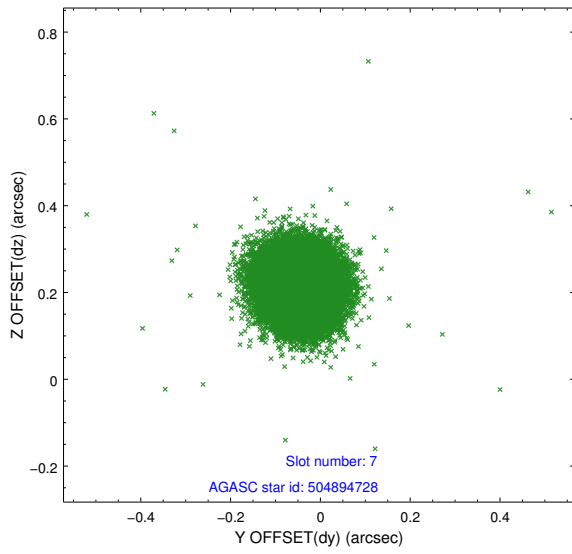
Time (s)



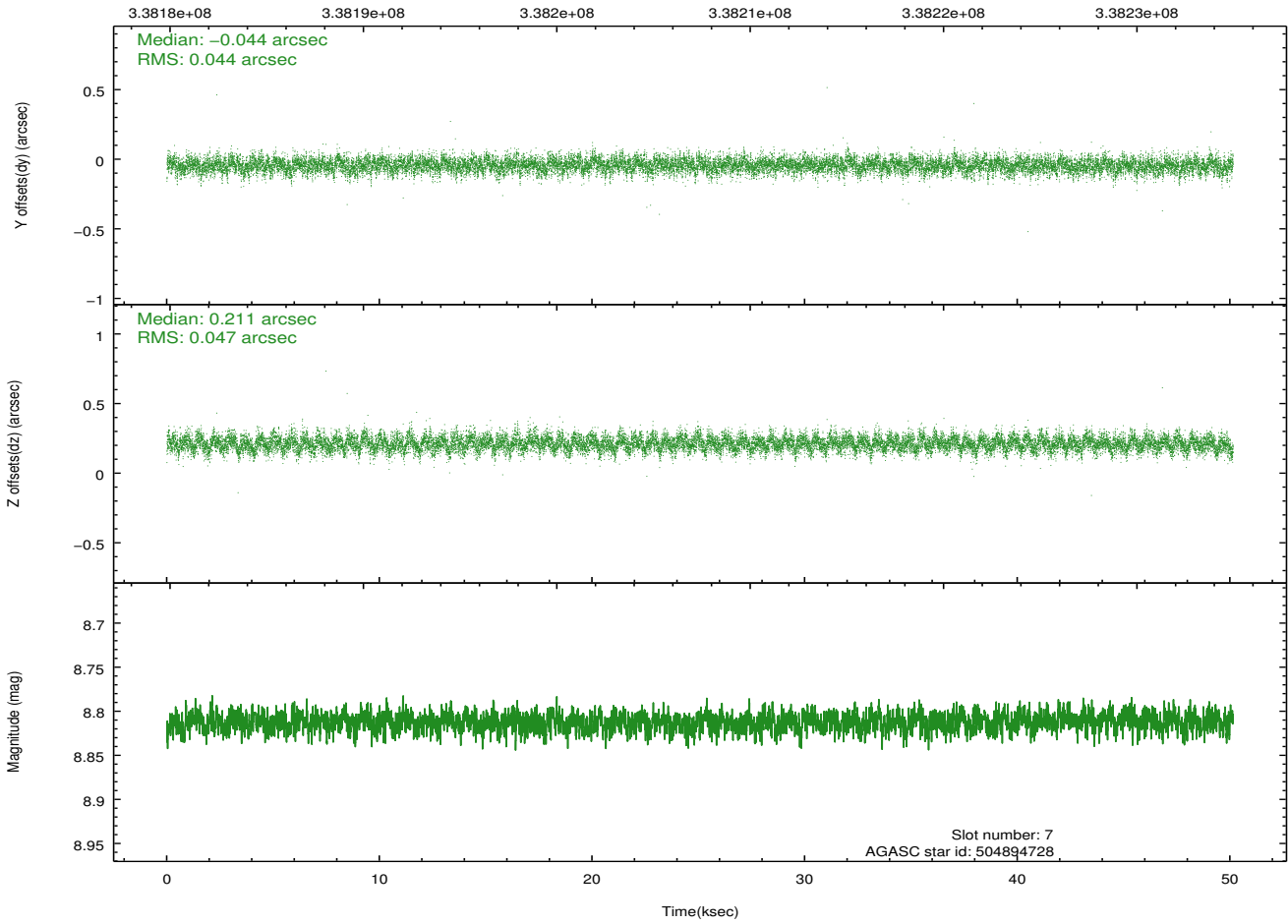
2.4.4 Slot 6



2.4.5 Slot 7

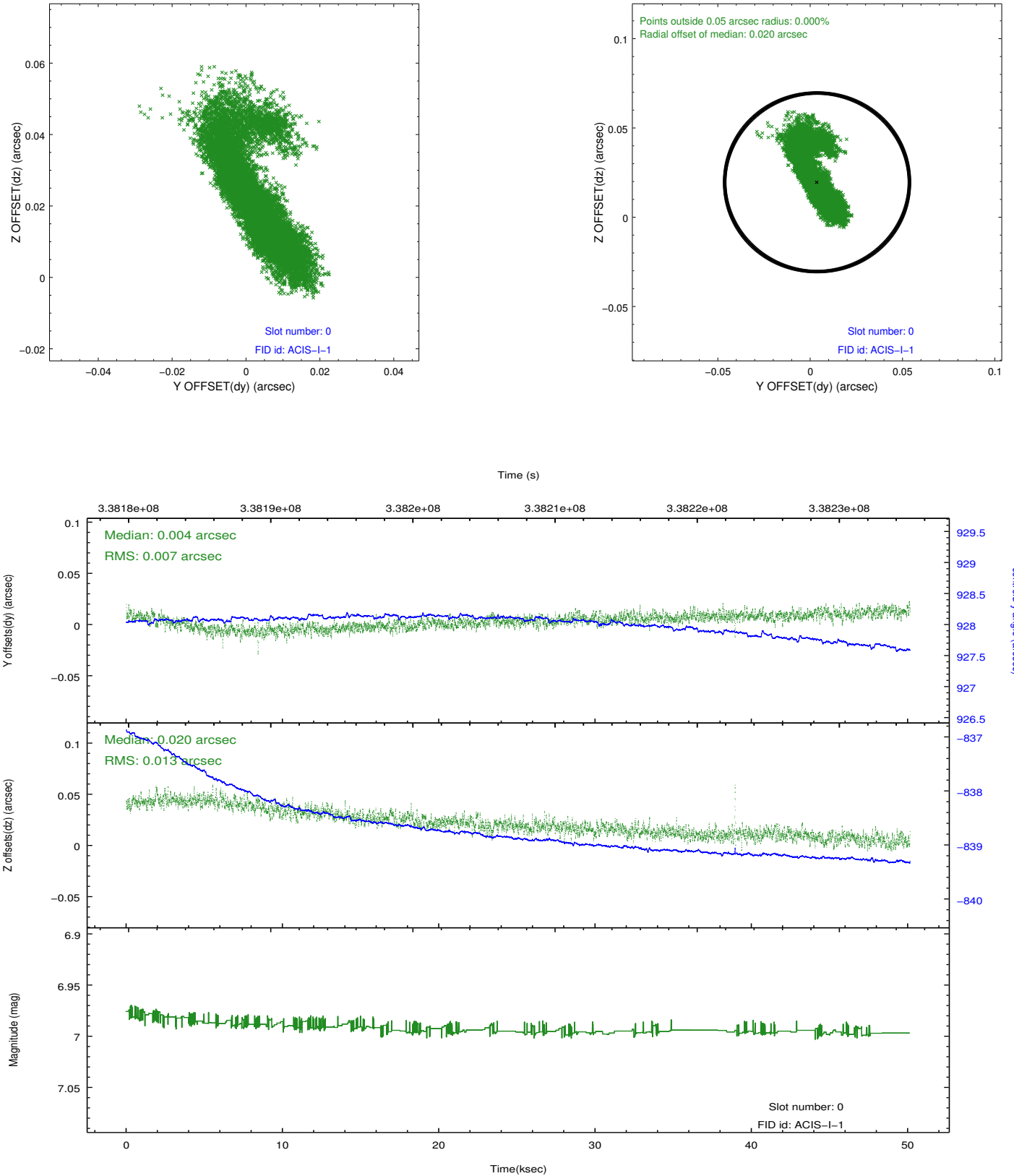


Time (s)

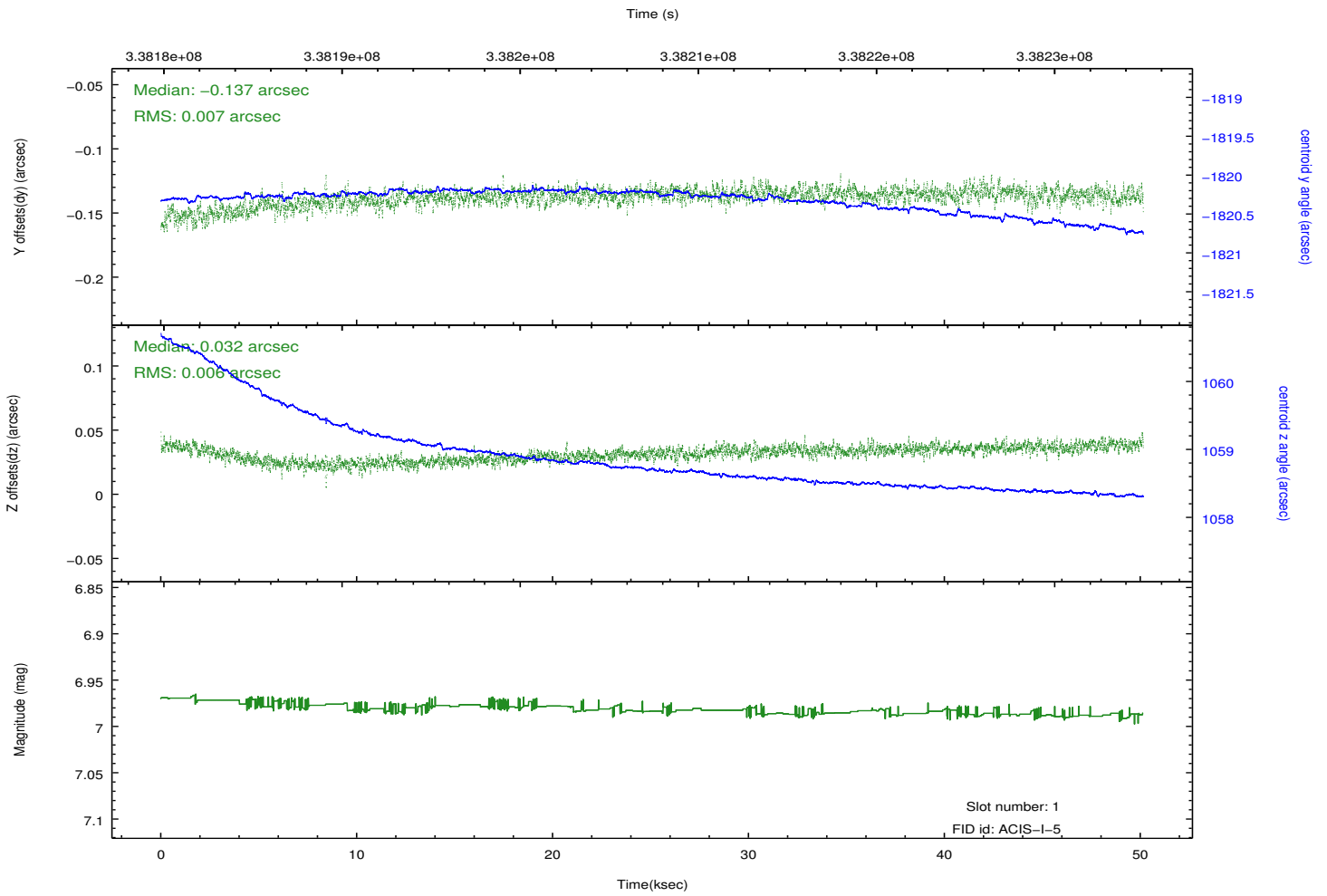
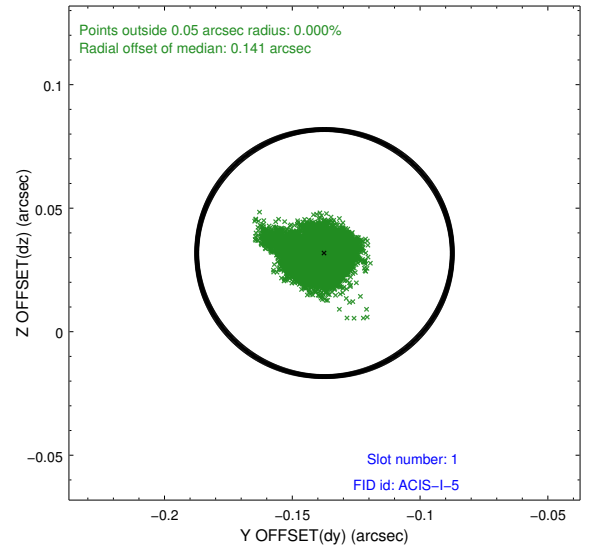
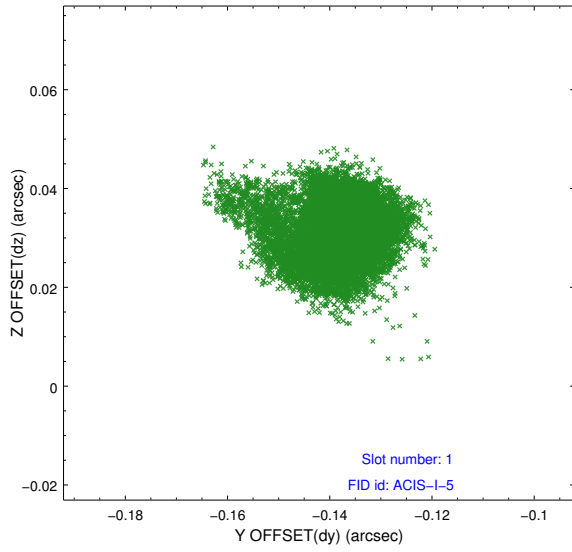


2.5 FID Slots

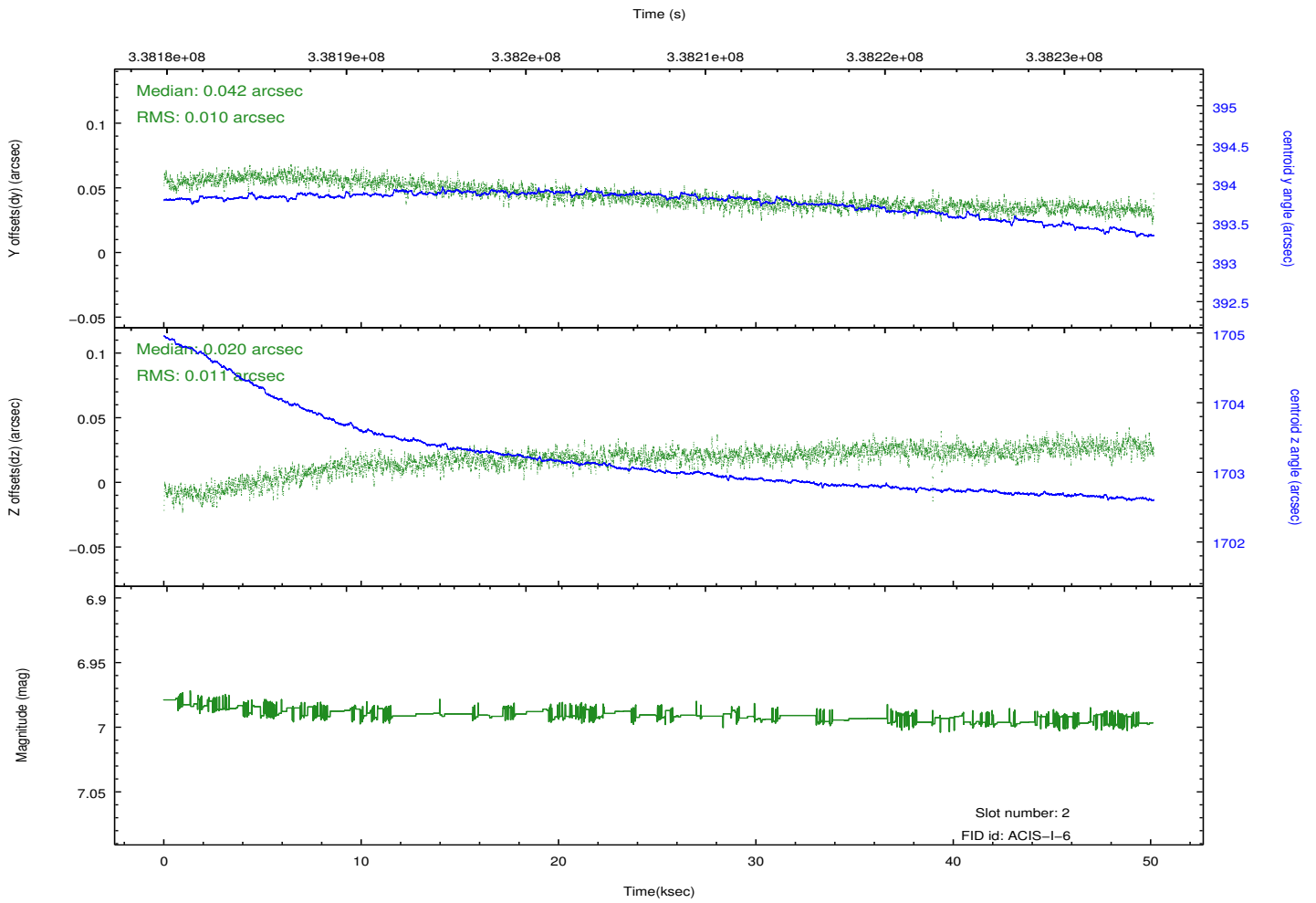
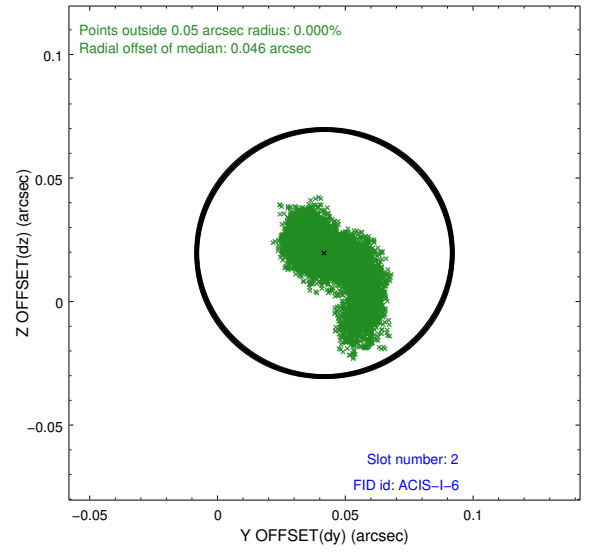
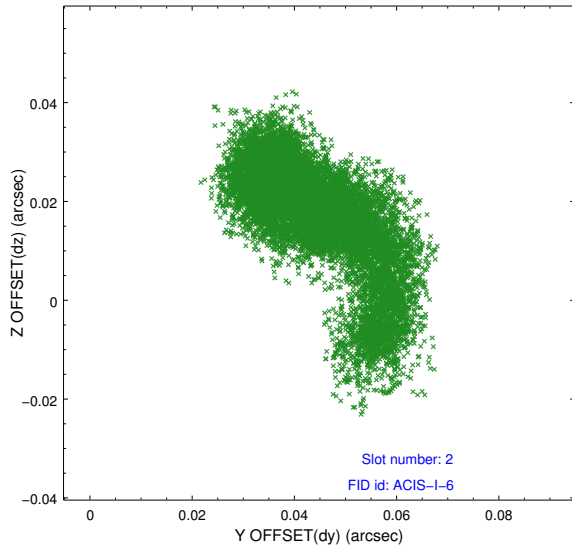
2.5.1 Slot 0



2.5.2 Slot 1



2.5.3 Slot 2



A Summary

A.1 Status

V&V Scientist	Jen Lauer
V&V Date (YYYY-MM-DD)	2012.05.30
V&V Edition	1
V&V Disposition and Status	OK
V&V Charge Time	50.1268365

A.2 Comments

Joint Proposal: Spitzer. Roll constraint met.