

V&V Reference Report

L2 ASCDS Version : 8.4.4

Observation 9775 - L2 Version 2
Chandra X-Ray Center

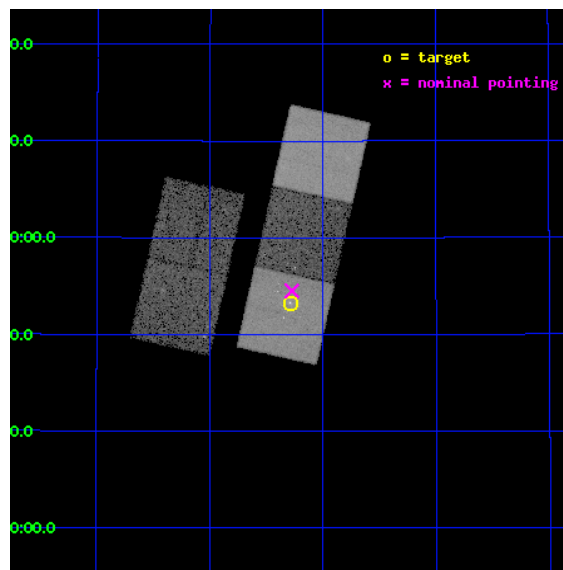
L2 Processing Date : May 5 2012

Contents

1	Front	2
2	OBI	3
2.1	OBI	3
2.1.1	Images	3
2.1.2	Bias	3
2.1.3	Parameters	4
2.1.4	Events	4
2.2	Compared Parameters	5
2.3	Aspect	6
2.4	Star Slots	9
2.4.1	Slot 3	9
2.4.2	Slot 4	10
2.4.3	Slot 5	11
2.4.4	Slot 6	12
2.4.5	Slot 7	13
2.5	FID Slots	14
2.5.1	Slot 0	14
2.5.2	Slot 1	15
2.5.3	Slot 2	16
A	Summary	17
A.1	Status	17
A.2	Comments	17

1 Front

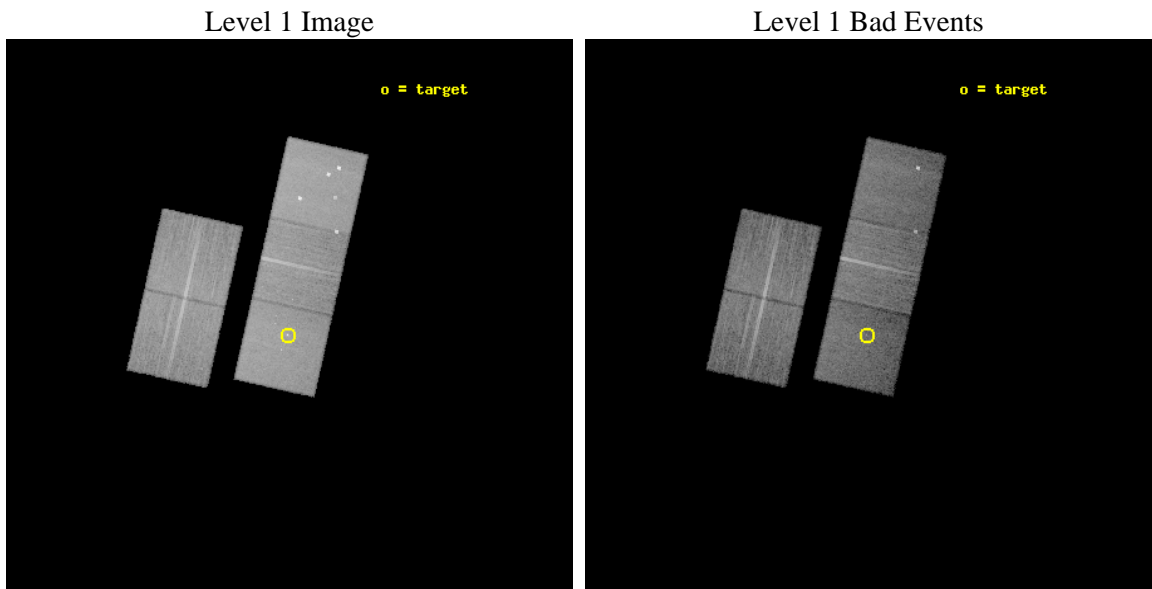
seq_num	800744	Sequence number
obs_id	9775	Observation id
title	The cluster around the powerful radio-loud quasar 3C186 at z=1.1	P
observer	Dr. Aneta Siemiginowska	Principal investigator
object	3C 186	Source name
dtcycle	0	
cycle	P	events from which exps? Prim/Second/Both
ra_targ	116.0725	Observer's specified target RA [deg]
dec_targ	37.888083	Observer's specified target Dec [deg]
ra_nom	116.06875480605	Nominal RA [deg]
dec_nom	37.908732132034	Nominal Dec [deg]
roll_nom	102.65892363247	Nominal Roll [deg]
revision	2	Processing version of data
ontime	16144.800124168	Sum of GTIs [s]
livetime	15933.856424917	Livetime [s]
ontime2	16144.800124168	Sum of GTIs [s]
ontime3	16141.659243286	Sum of GTIs [s]
ontime5	16144.800124168	Sum of GTIs [s]
ontime6	16141.659153879	Sum of GTIs [s]
ontime7	16144.800124168	Sum of GTIs [s]
l2events	189135	Number of level 2 events



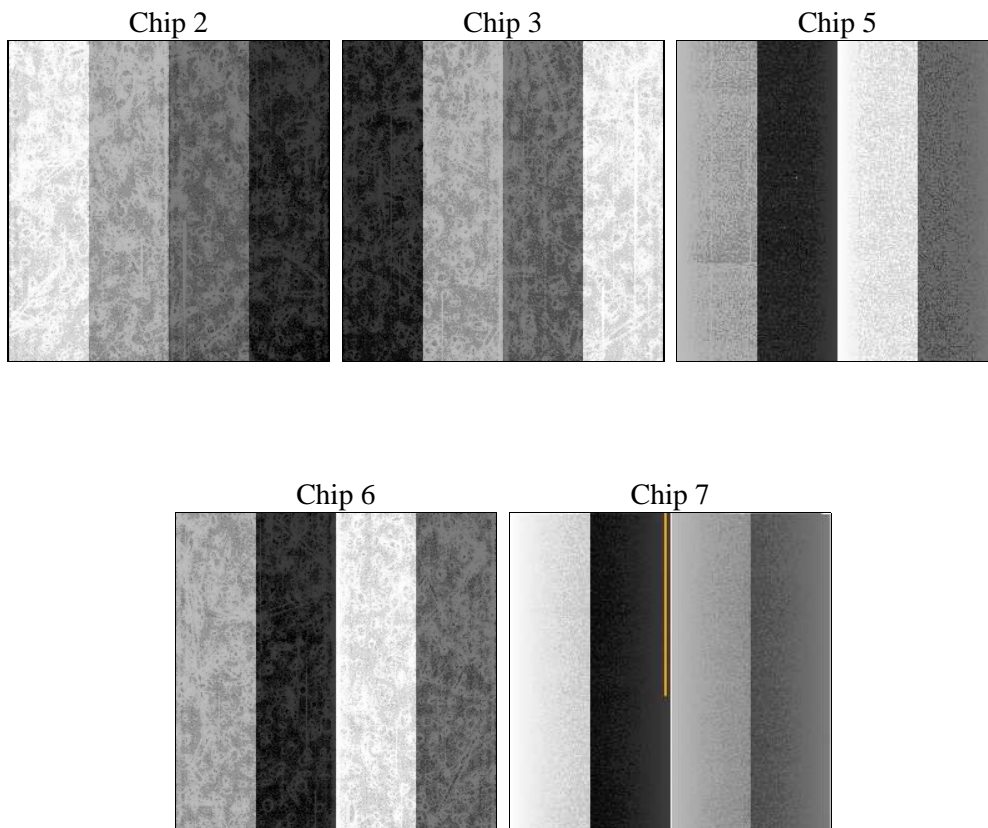
2 OBI

2.1 OBI

2.1.1 Images



2.1.2 Bias



2.1.3 Parameters

obi_num	0	Obi number	sched_exp_time	16000.000000	[s] Scheduled observation exposure time
ascdsver	8.4.4	Processing system revision	ontime	16144.800124168	Sum of GTIs [s]
caldbver	4.4.9	 	ontime2	16144.800124168	Sum of GTIs [s]
date	2012-05-05T22:17:05	Date and time of file creation	ontime3	16141.659243286	Sum of GTIs [s]
revision	2	Processing version of data	ontime5	16144.800124168	Sum of GTIs [s]
			ontime6	16141.659153879	Sum of GTIs [s]
			ontime7	16144.800124168	Sum of GTIs [s]
			l1events	778550	Number of level 1 events

2.1.4 Events

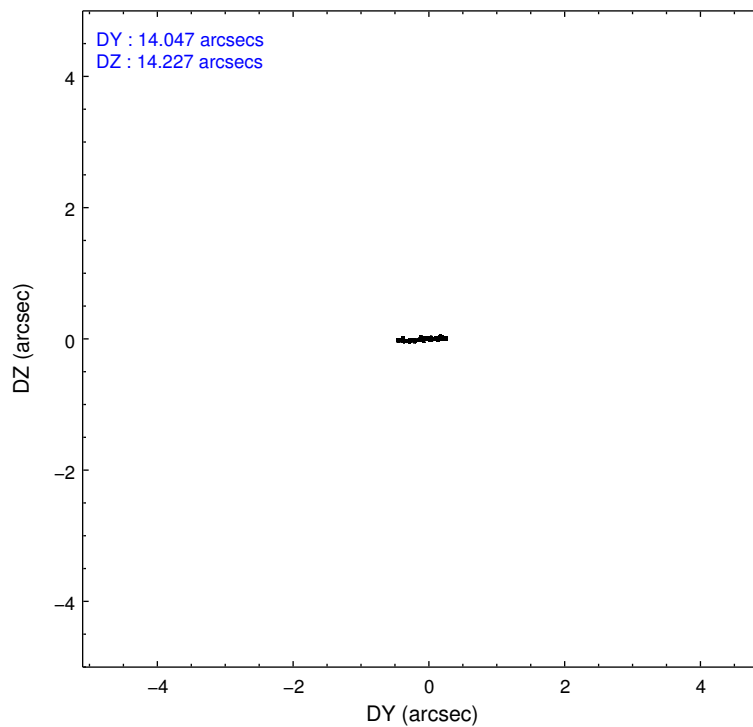
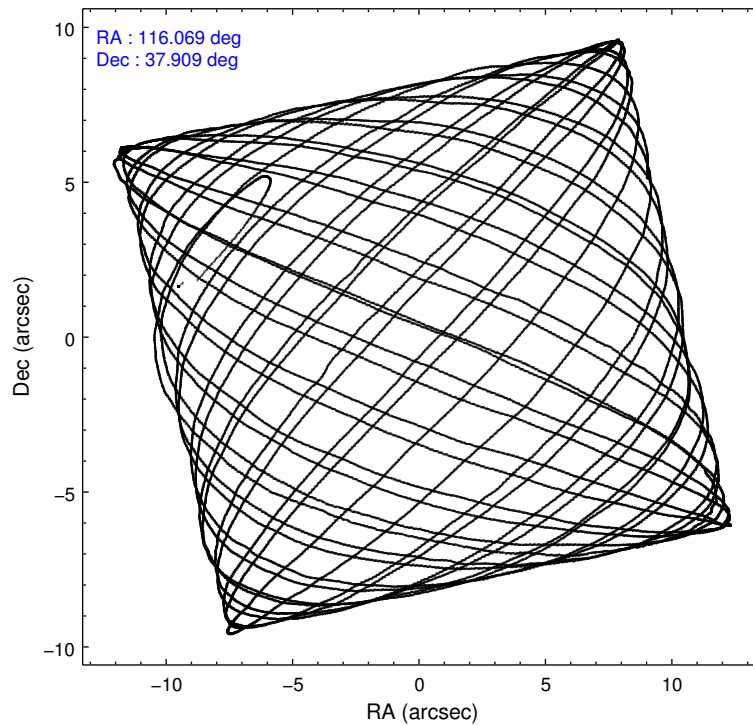
	ccd 2	ccd 3	ccd 5	ccd 6	ccd 7
level 1 events	143862	133553	203789	139448	157898
rejected events	130691	120940	102724	125375	86935
rejected %	90%	90%	50%	89%	55%

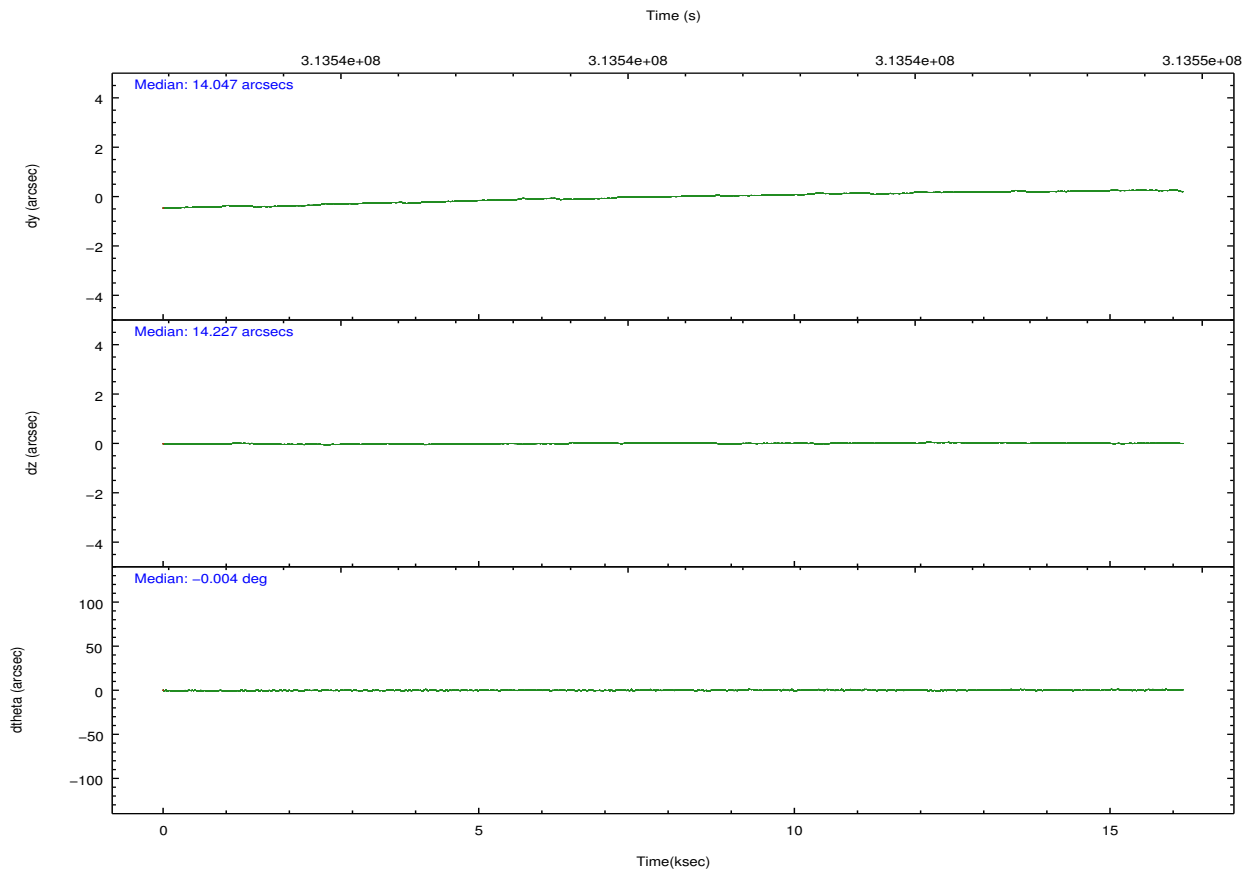
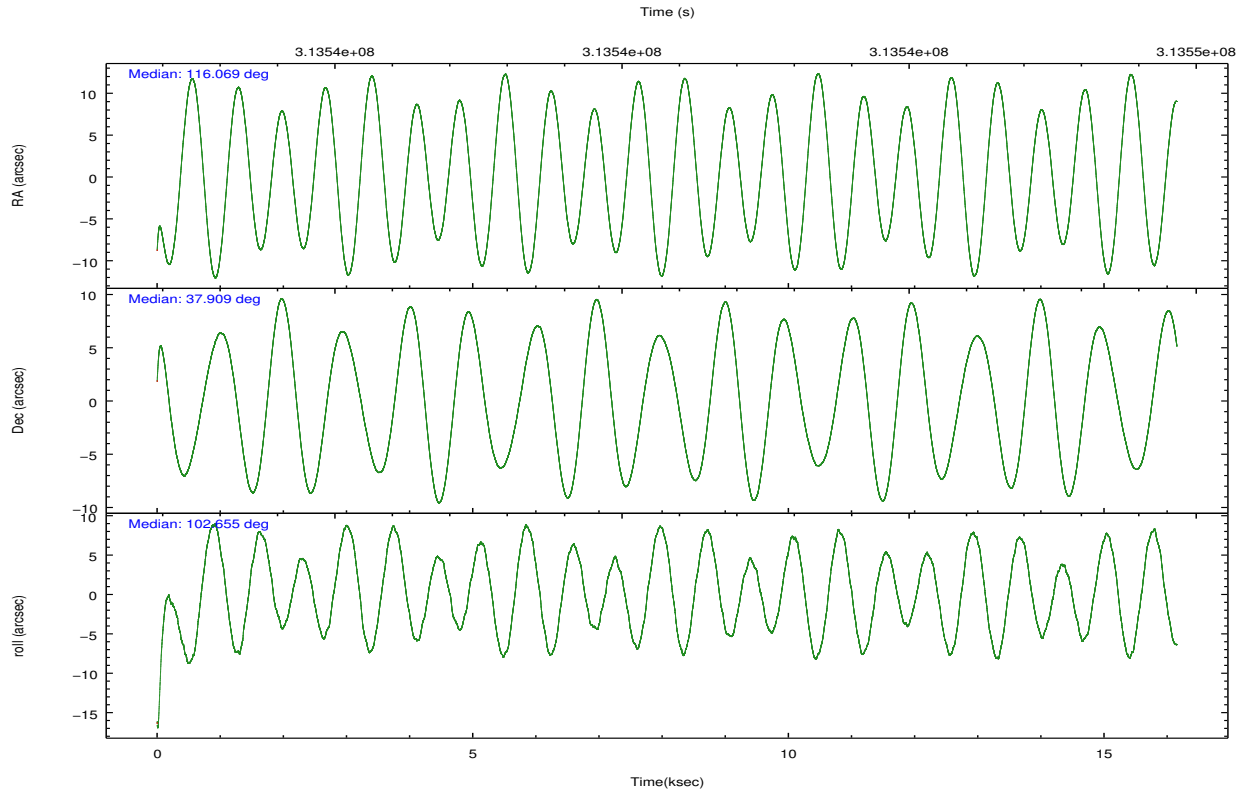
	ccd 2	ccd 3	ccd 5	ccd 6	ccd 7
grade 0 events	4804	4610	16938	5124	7280
	3%	3%	8%	3%	4%
grade 1 events	82	79	1049	62	240
	0%	0%	0%	0%	0%
grade 2 events	3240	2708	29248	3142	14774
	2%	2%	14%	2%	9%
grade 3 events	1485	1484	4131	1595	6788
	1%	1%	2%	1%	4%
grade 4 events	1528	1435	3650	1589	6714
	1%	1%	1%	1%	4%
grade 5 events	4524	5398	15310	5612	16095
	3%	4%	7%	4%	10%
grade 6 events	2472	2721	49956	3022	37390
	1%	2%	24%	2%	23%
grade 7 events	125727	115118	83507	119302	68617
	87%	86%	40%	85%	43%

2.2 Compared Parameters

Parameter	Planned	Actual	Parameter	Planned	Actual
Instrument	ACIS	ACIS	Obspar format version number	7	7
Detector	ACIS-23567	ACIS-23567	Obspar file type	PREDICTED	ACTUAL
Grating	NONE	NONE	Obspar update status	NONE	UPDATED
Data mode	VFAINT	VFAINT	Number of optional ACIS chips dropped	0	0
Observation mode	POINTING	POINTING	On-chip summing requested	N	N
[deg] Pointing RA	116.092609	116.0687548060517	Subarray requested	NONE	NONE
[deg] Pointing Dec	37.888869	37.90873213203361	Alternating exposures requested	N	N
[deg] Pointing Roll	102.487652	102.6589236324711	[s] Primary exposure time	0.000000	3.1
[mm] SIM focus pos	-0.684267	-0.6828225247311905			
[mm] SIM defocus	0	0.001444936568705701			
[mm] SIM translation stage pos	-190.132523	-190.1400660498719			
[mm] SIM translation stage offset	0	0.00754346686406393			
[s] Observation start time (MET)	313532859.184000	313531644.85608			
Observation start date	2007-12-08T20:26:34	2007-12-08T20:07:24			
[s] Observation end time (MET)	313548859.184000	313549773.51946			
Observation end date	2007-12-09T00:53:14	2007-12-09T01:09:33			
Read mode	TIMED	TIMED			

2.3 Aspect



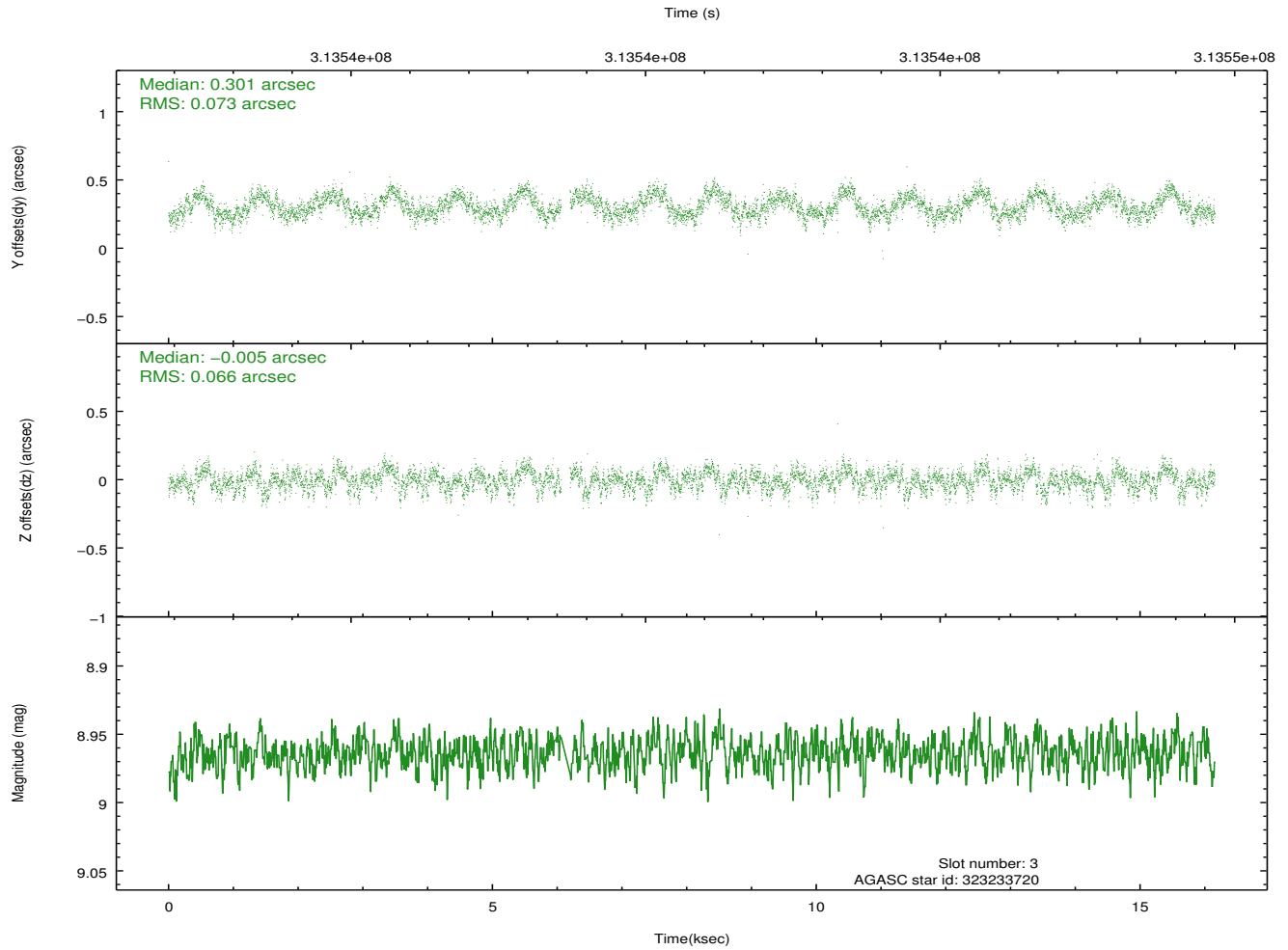
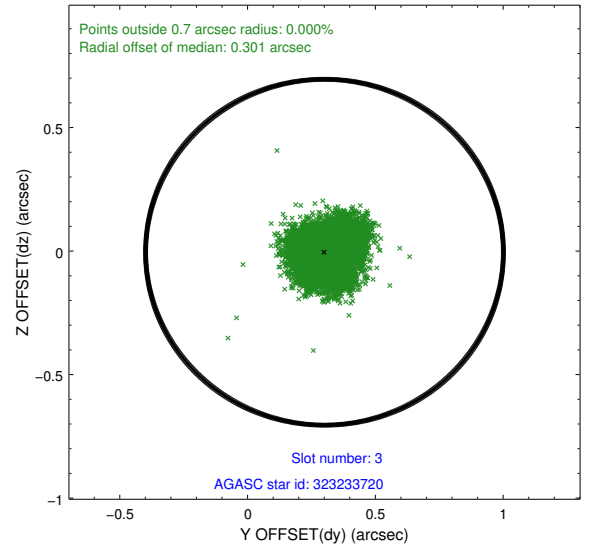
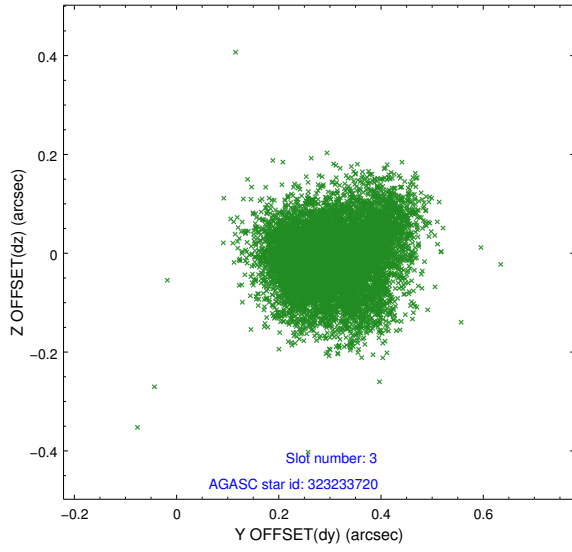


Slot Statistics

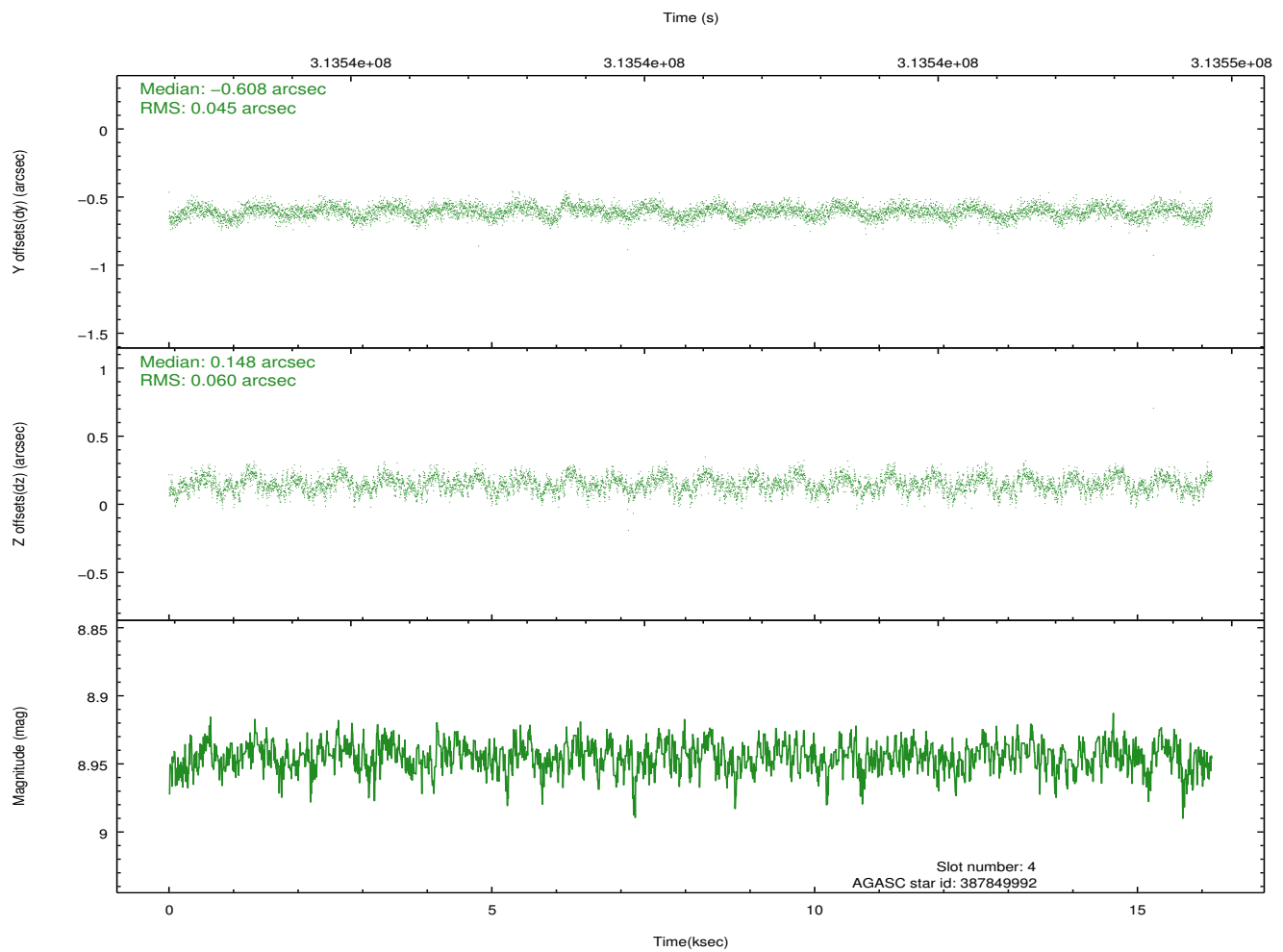
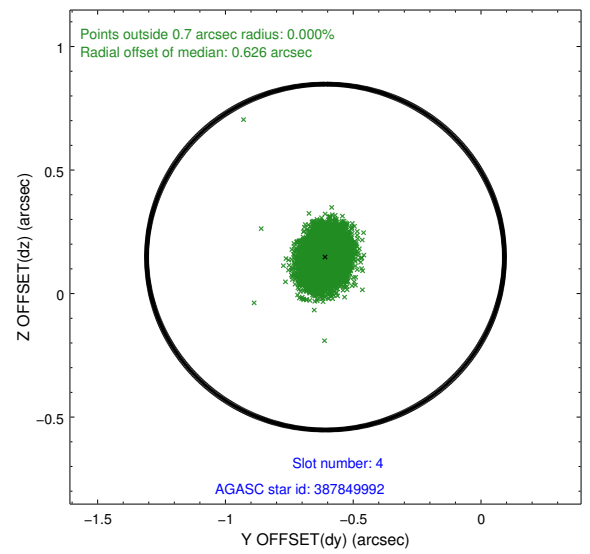
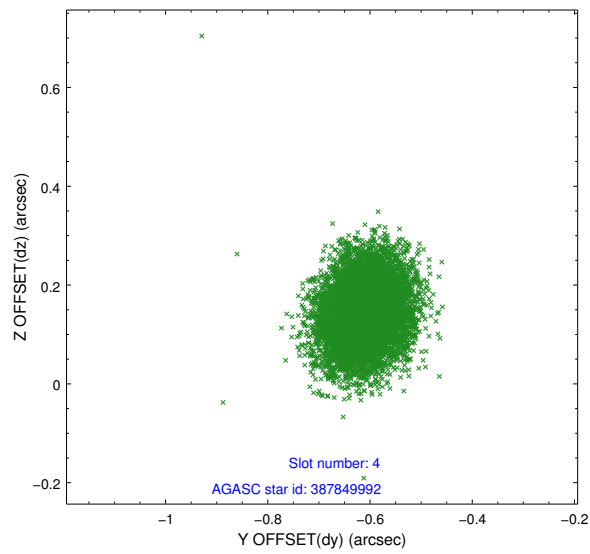
slot	status	id	mag	n_pts	med_dy	med_dz	dr1	dr2	ra	dec	mean_y	mean_z
0	FID	ACIS-S-2	7.09	3941	-0.064	-0.047	0.012	0.017	0.000000	0.000000	-767.00	-1735.63
1	FID	ACIS-S-4	7.19	3941	0.190	0.043	0.010	0.019	0.000000	0.000000	2146.39	172.68
2	FID	ACIS-S-5	7.22	3941	-0.155	0.012	0.007	0.017	0.000000	0.000000	-1819.60	166.60
3	GUIDE	323233720	8.96	7809	0.301	-0.005	0.107	0.165	116.958511	37.414357	-2191.76	-2050.82
4	GUIDE	387849992	8.94	7875	-0.608	0.148	0.080	0.127	116.439680	37.644416	-1072.21	-776.18
5	GUIDE	387854512	8.81	7879	0.155	-0.041	0.104	0.164	116.240956	37.674293	-845.27	-245.88
6	GUIDE	387855168	7.81	7881	0.080	-0.020	0.065	0.105	116.658195	38.272157	1006.40	-1860.03
7	GUIDE	387851416	9.39	7871	0.081	-0.077	0.117	0.187	115.426967	38.141179	1301.01	1642.08

2.4 Star Slots

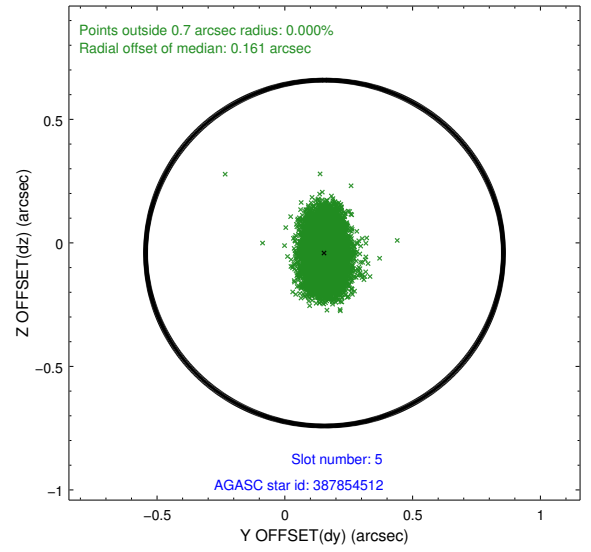
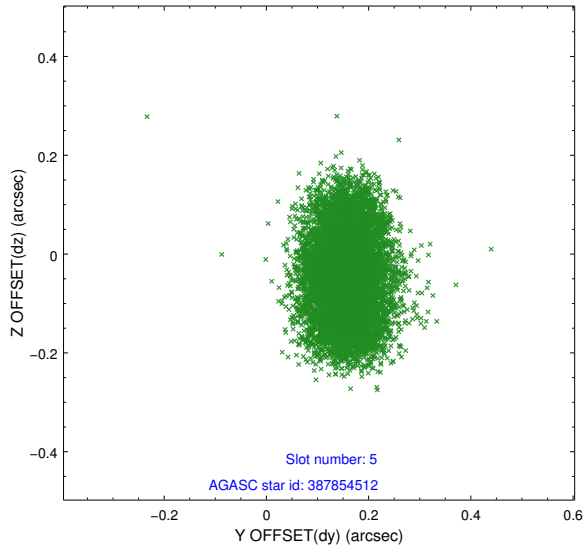
2.4.1 Slot 3



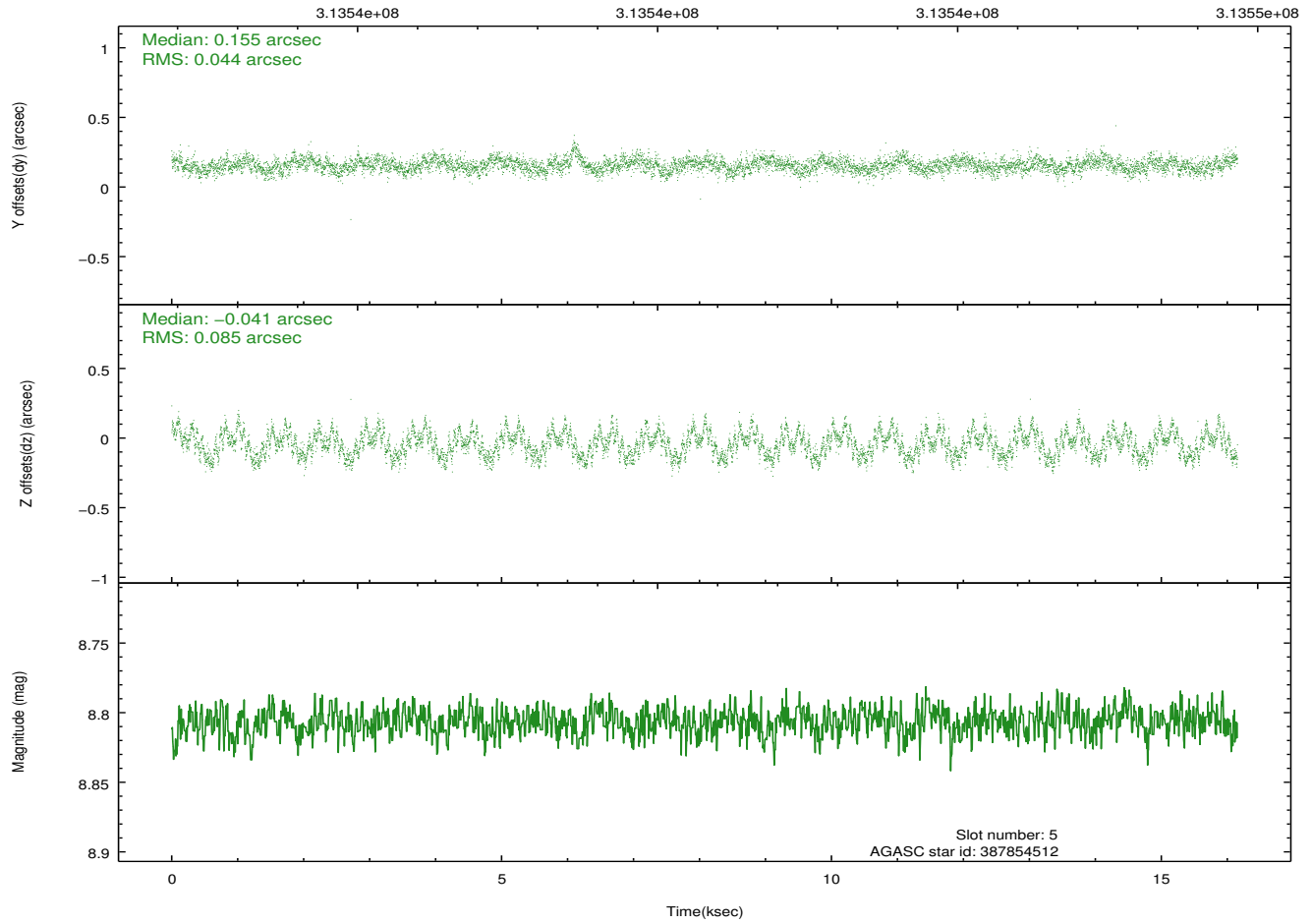
2.4.2 Slot 4



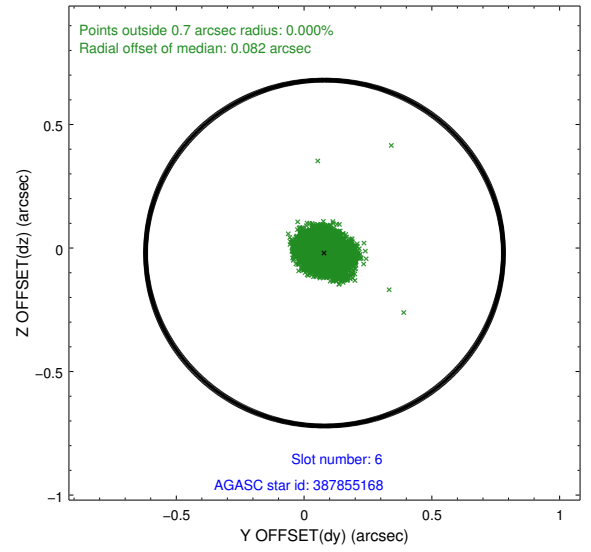
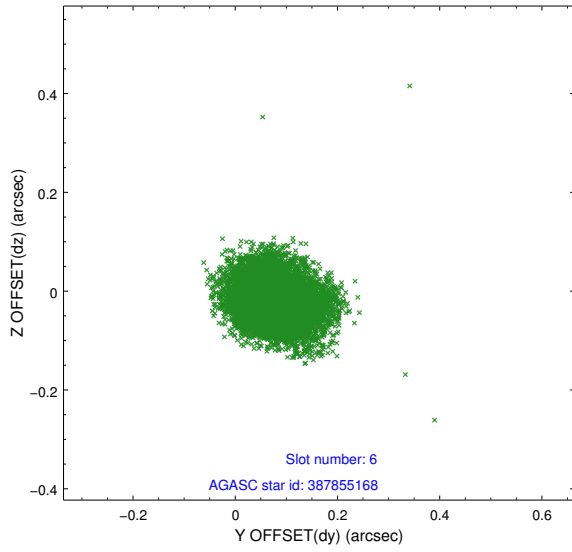
2.4.3 Slot 5



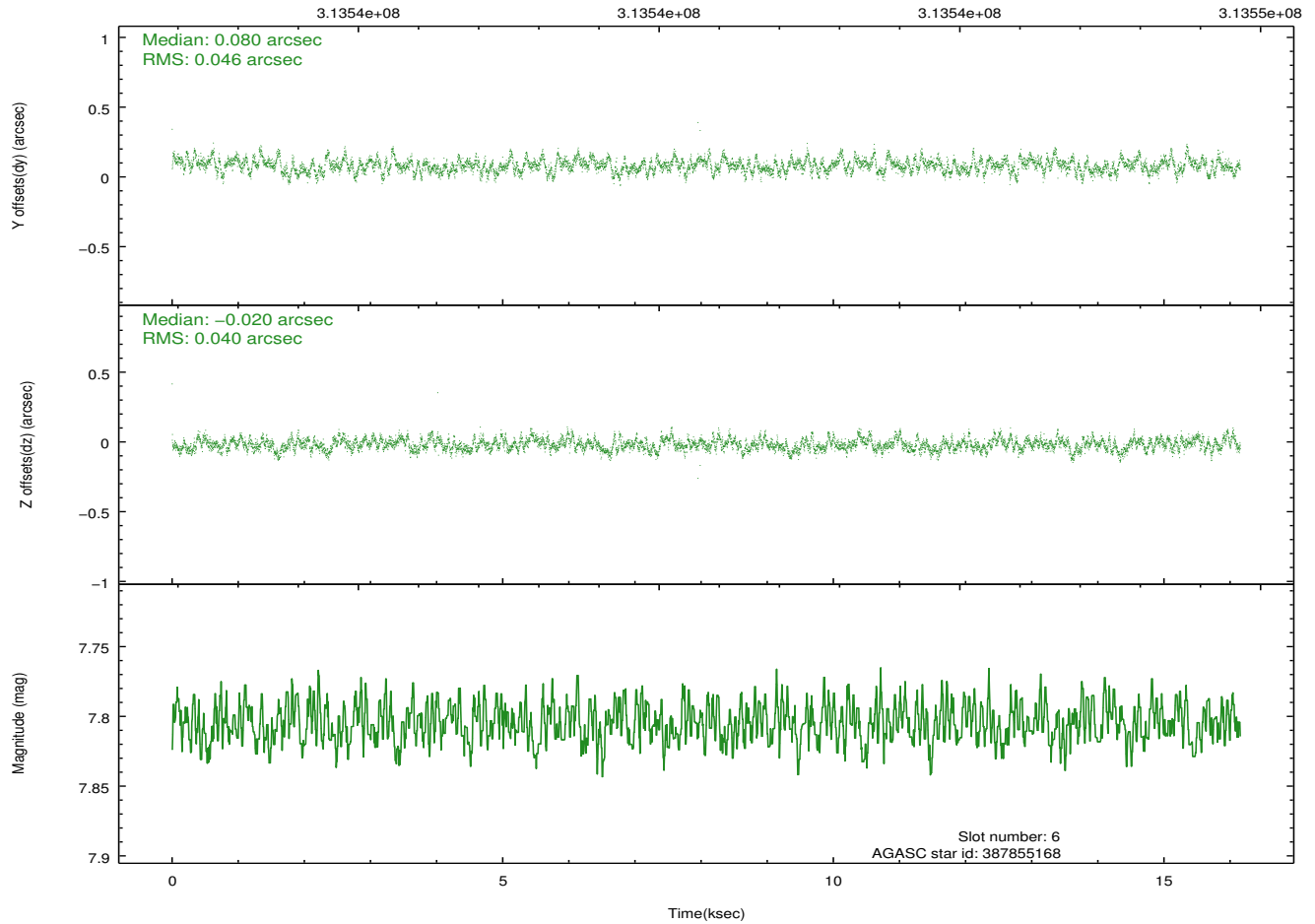
Time (s)



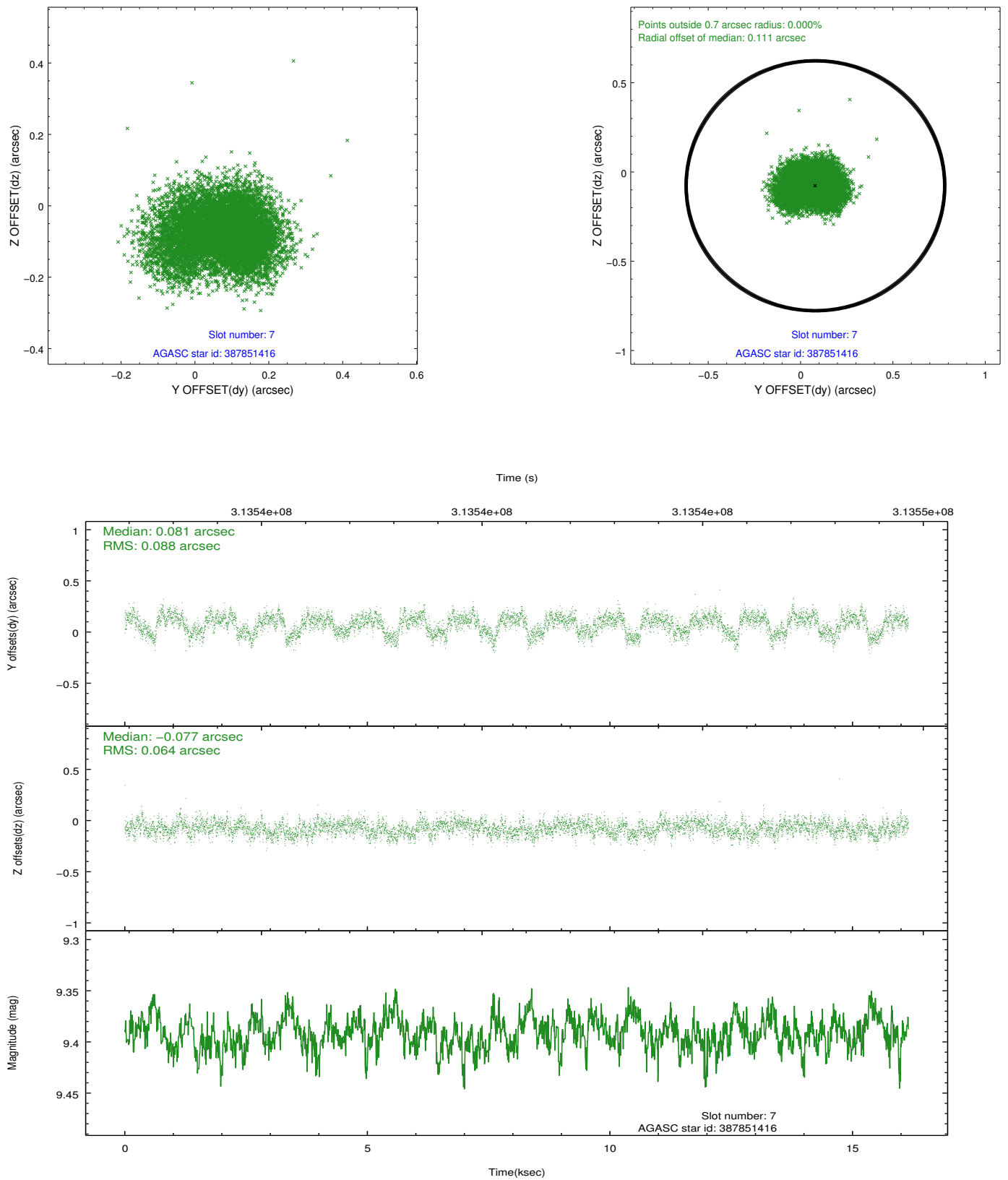
2.4.4 Slot 6



Time (s)

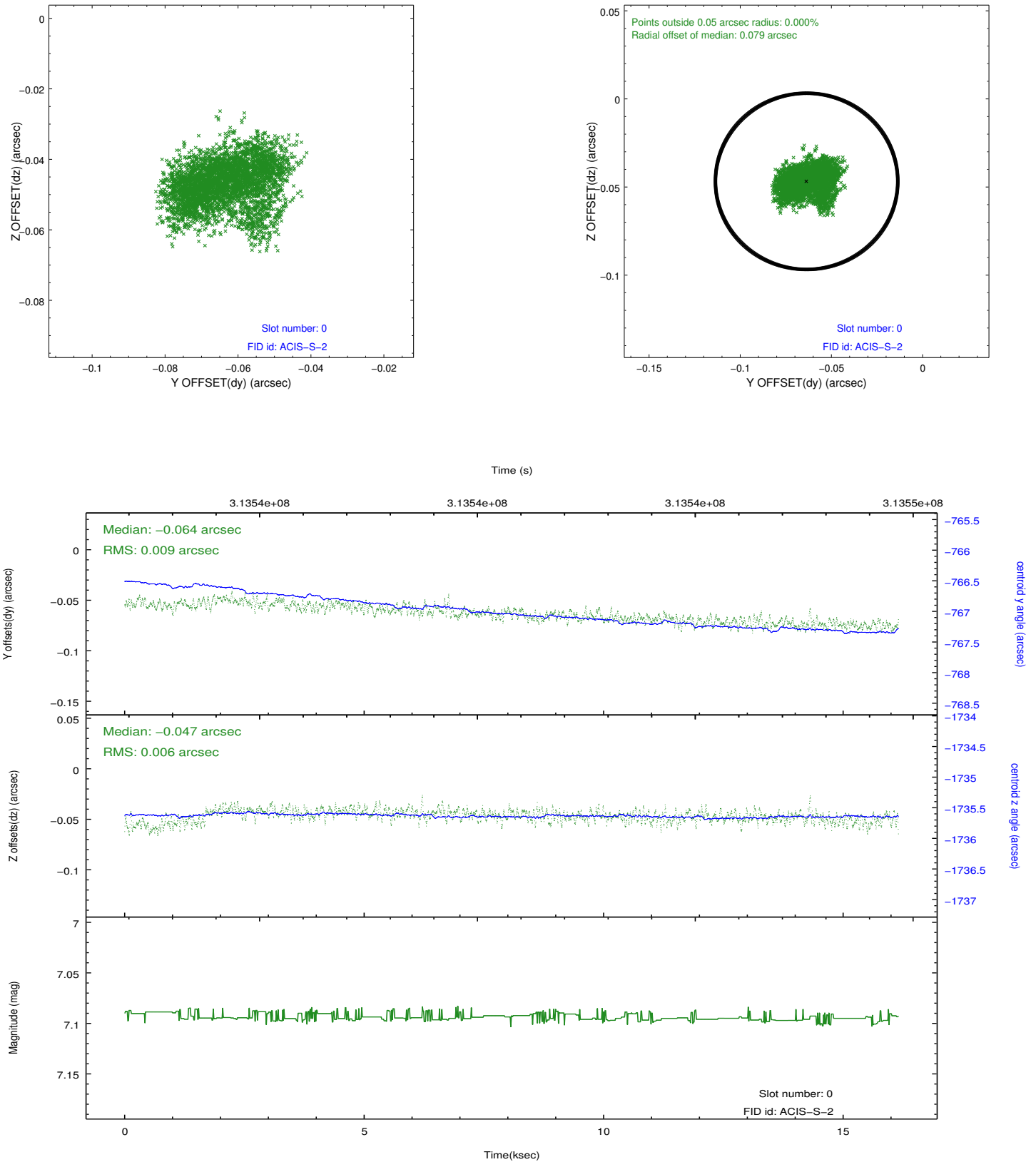


2.4.5 Slot 7

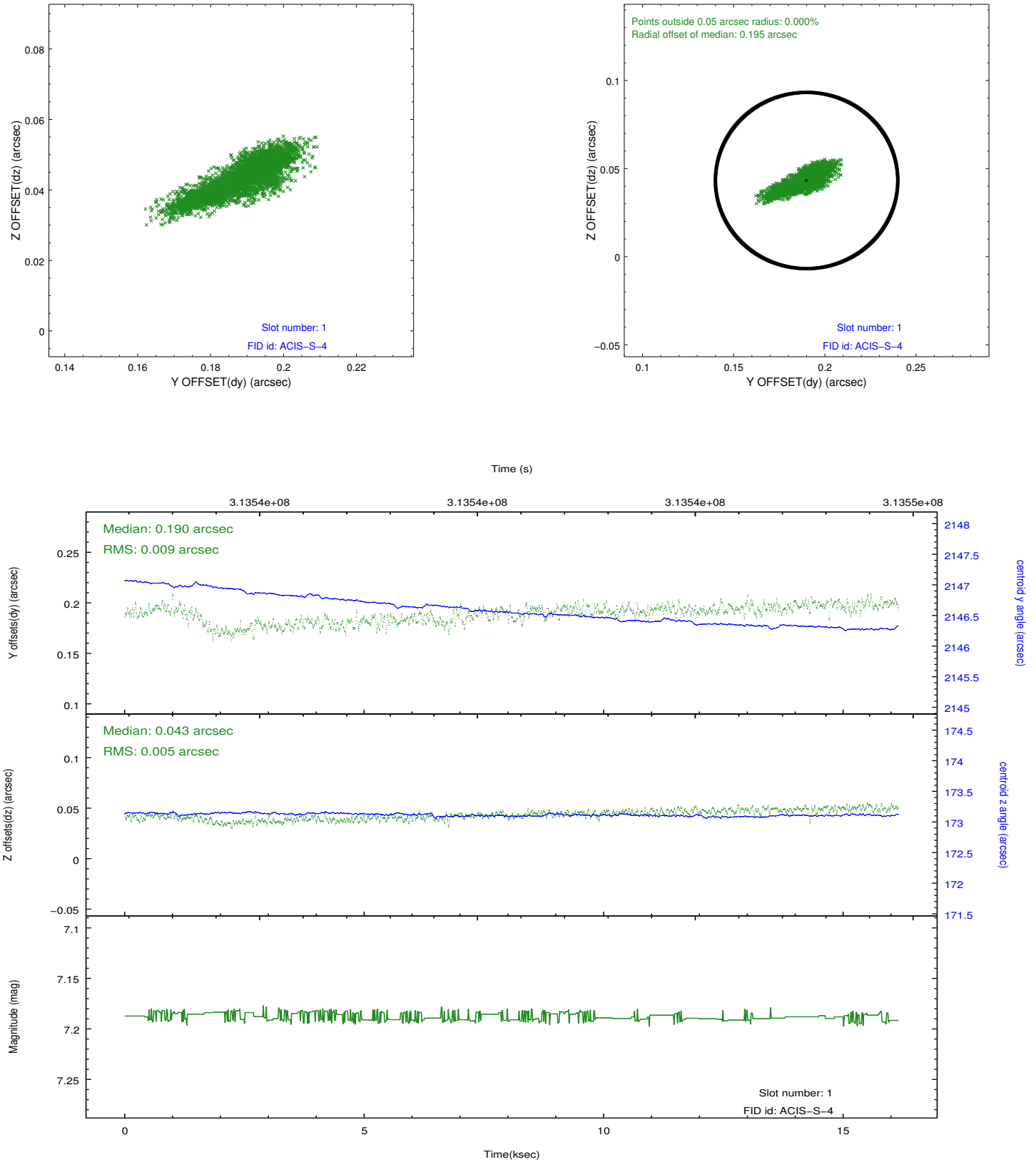


2.5 FID Slots

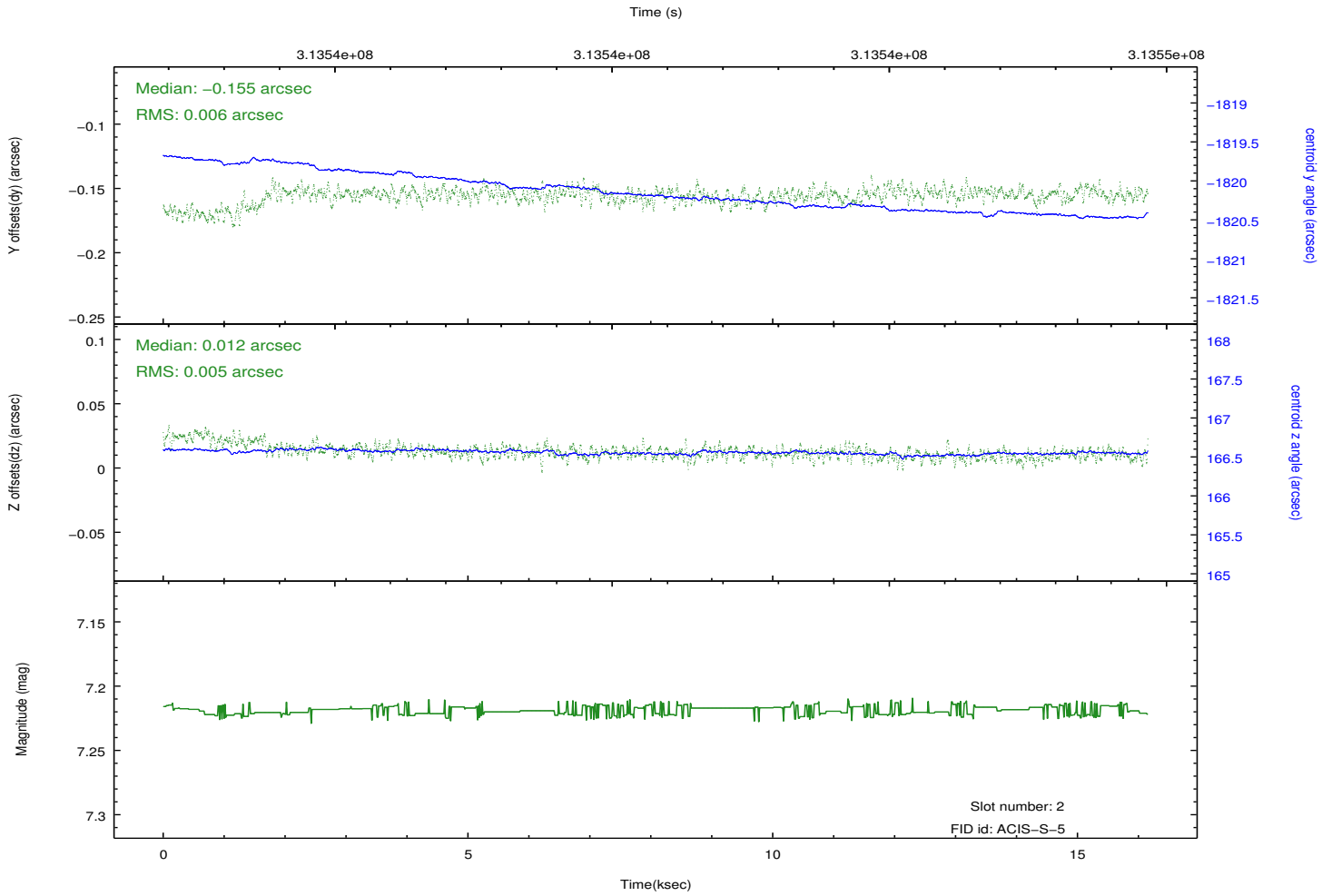
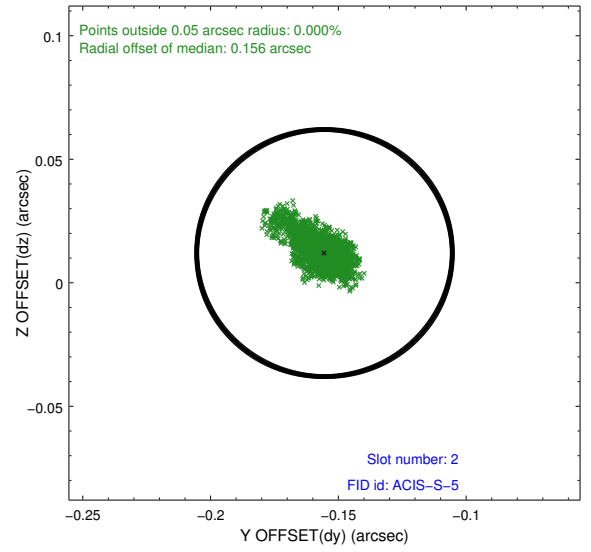
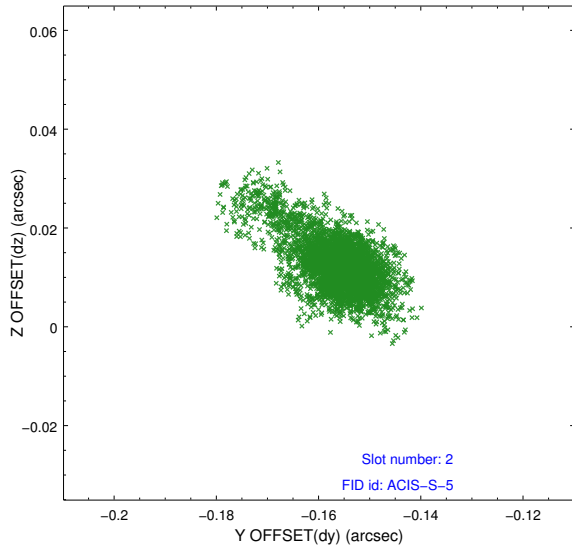
2.5.1 Slot 0



2.5.2 Slot 1



2.5.3 Slot 2



A Summary

A.1 Status

V&V Scientist	Jen Lauer
V&V Date (YYYY-MM-DD)	2012.05.08
V&V Edition	1
V&V Disposition and Status	OK
V&V Charge Time	16.1448001

A.2 Comments