

V&V Reference Report

L2 ASCDS Version : 8.4.4

Observation 9825 - L2 Version 3
Chandra X-Ray Center

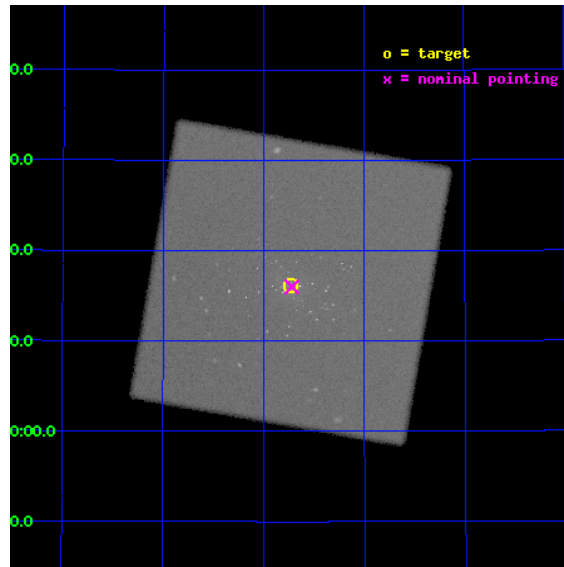
L2 Processing Date : Aug 13 2012

Contents

1	Front	2
2	OBI	3
2.1	OBI	3
2.1.1	Images	3
2.1.2	Parameters	4
2.1.3	Events	4
2.2	Compared Parameters	5
2.3	Aspect	6
2.4	Star Slots	9
2.4.1	Slot 3	9
2.4.2	Slot 4	10
2.4.3	Slot 5	11
2.4.4	Slot 6	12
2.4.5	Slot 7	13
2.5	FID Slots	14
2.5.1	Slot 0	14
2.5.2	Slot 1	15
2.5.3	Slot 2	16
A	Summary	17
A.1	Status	17
A.2	Comments	17

1 Front

seq_num	300233	Sequence number
obs_id	9825	Observation id
title	Resolving short supersoft source states of optical novae in the core of M31	Proposal title
observer	Dr. Wolfgang Pietsch	Principal investigator
object	M31	Source name
ra_targ	10.684583	Observer's specified target RA [deg]
dec_targ	41.269278	Observer's specified target Dec [deg]
ra_nom	10.679932050239	Nominal RA [deg]
dec_nom	41.266901267735	Nominal Dec [deg]
roll_nom	234.90757933109	Nominal Roll [deg]
revision	3	Processing version of data
ontime	20435.682257593	[s]
livetime	20212.265678724	Ontime multiplied by DTCOR
l2events	1372723	Number of level 2 events

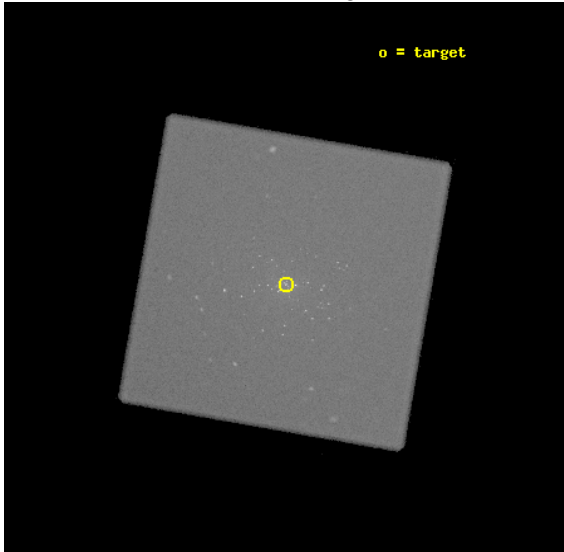


2 OBI

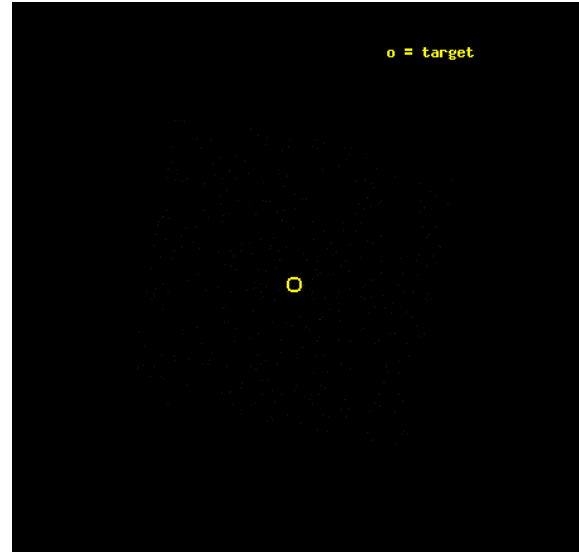
2.1 OBI

2.1.1 Images

Level 1 Image



Level 1 Bad Events



2.1.2 Parameters

obi_num	0	Obi number	sched_exp_time	20250.000000	[s] Scheduled observation exposure time
ascdsver	8.4.5	Processing system revision	ontime	20435.682257593	[s]
caldbver	4.5.1.1	 	l1events	2074973	Number of level 1 events
date	2012-08-12T23:41:50	Date and time of file creation			
revision	3	Processing version of data			

2.1.3 Events

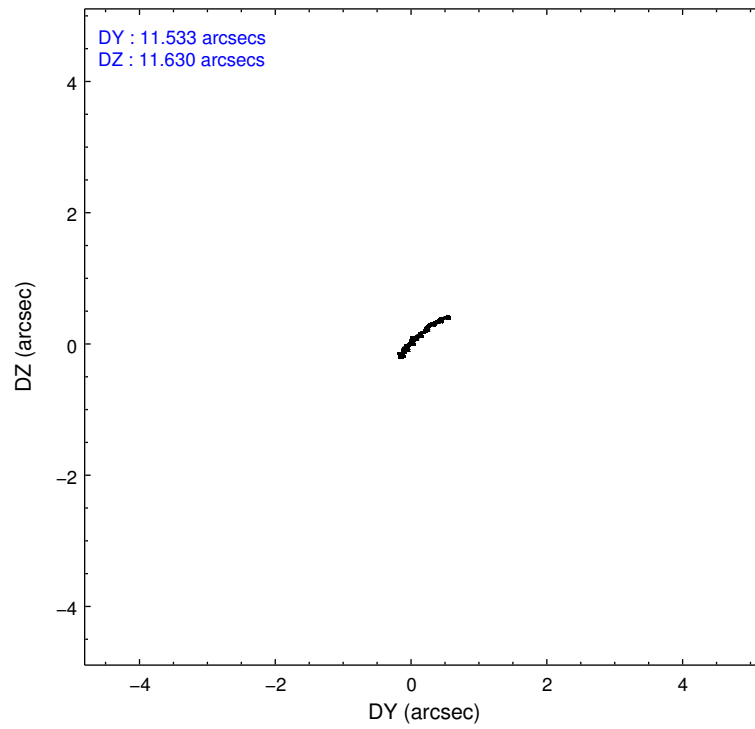
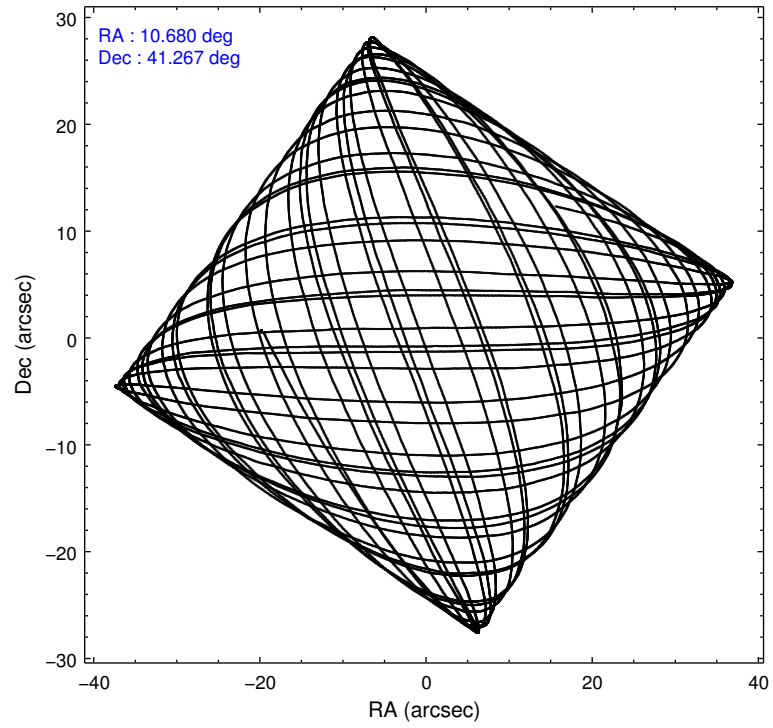
Level 1 Events

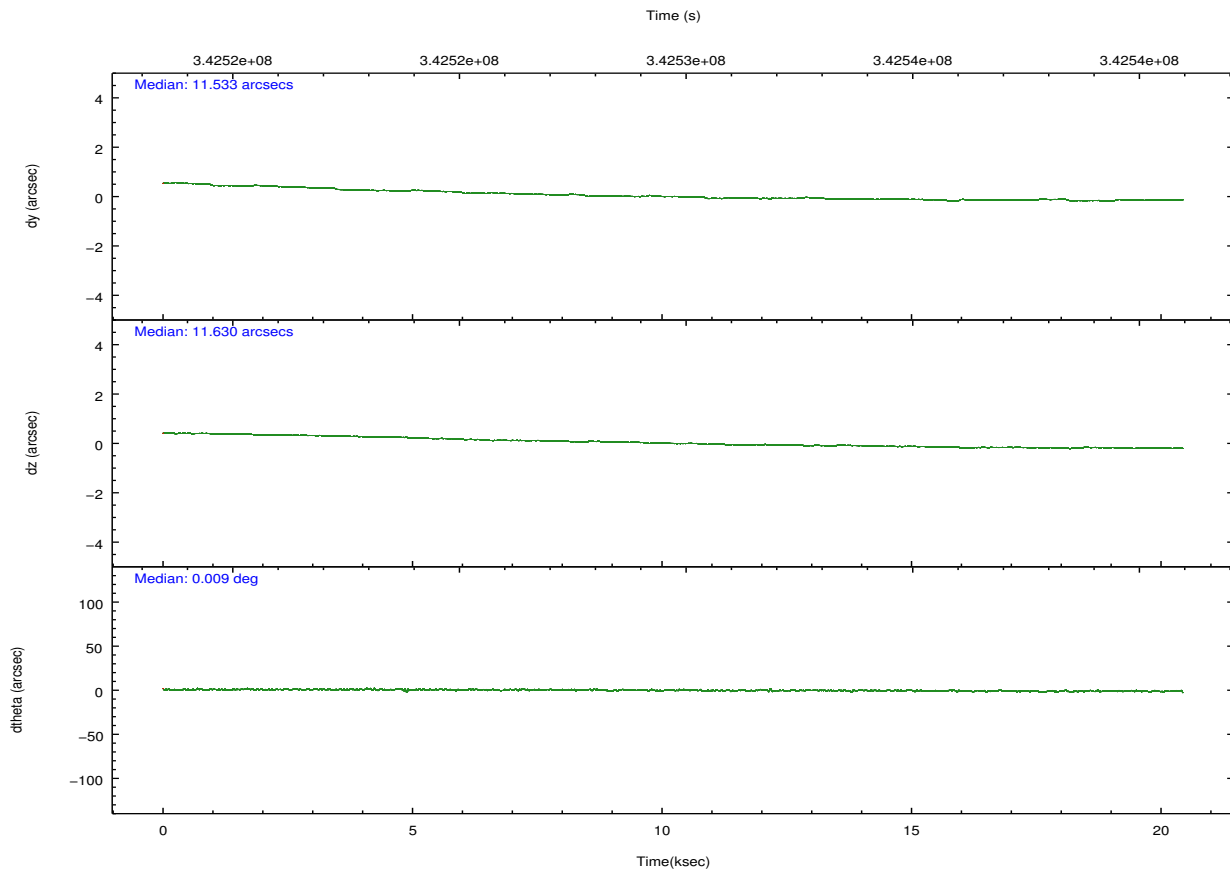
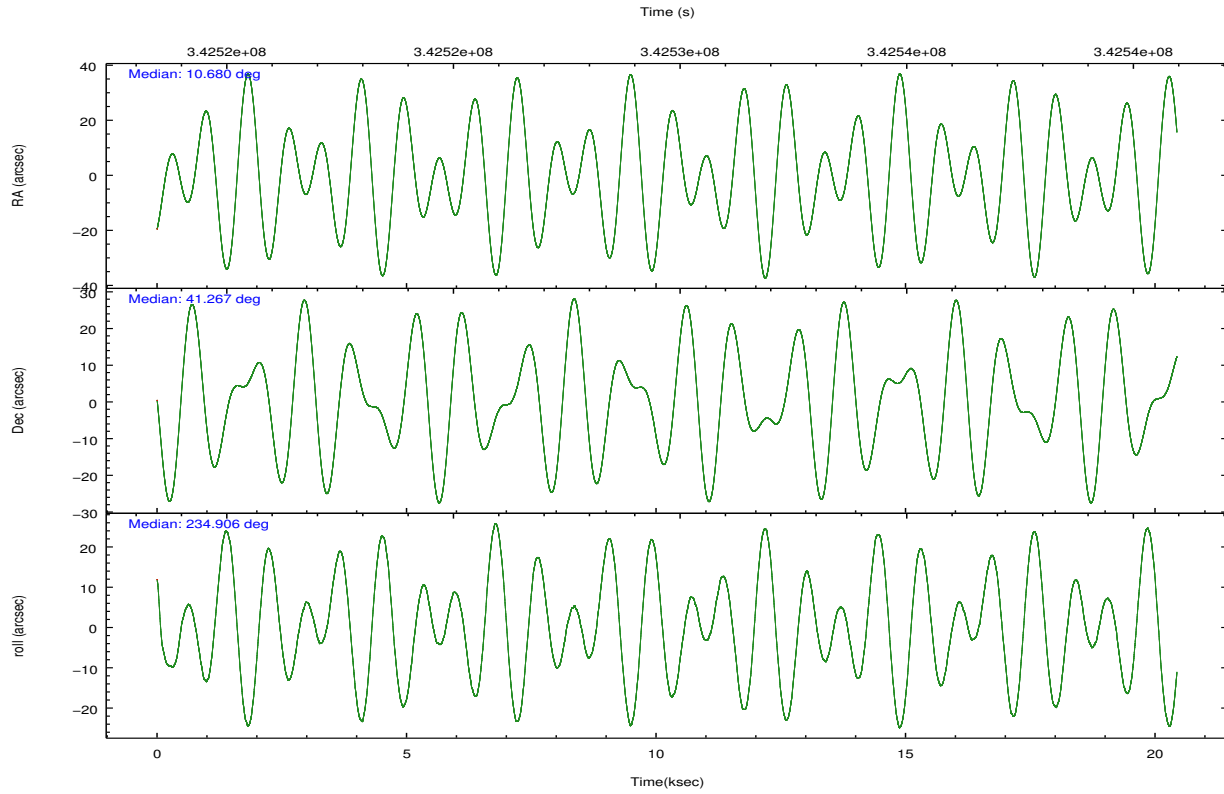
	segment 0
level 1 events	2074973
rejected events	87237
rejected %	4%

2.2 Compared Parameters

Parameter	Planned	Actual	Parameter	Planned	Actual
Instrument	HRC	HRC	Obspar format version number	7	7
Detector	HRC-I	HRC-I	Obspar file type	PREDICTED	ACTUAL
Grating	NONE	NONE	Obspar update status	NONE	UPDATED
Data mode	OBSERVING	OBSERVING			
Observation mode	POINTING	POINTING			
[deg] Pointing RA	10.682261	10.67993205023914			
[deg] Pointing Dec	41.294105	41.26690126773466			
[deg] Pointing Roll	235.001531	234.9075793310925			
[s] Window start time (MET)	342403265.184000	342403265.184000			
[s] Window stop time (MET)	342662405.184000	342662405.184000			
[mm] SIM focus pos	-1.040293	-1.038866356238299			
[mm] SIM defocus	0	0.001426264420575141			
[mm] SIM translation stage pos	126.985494	126.9854943052878			
[mm] SIM translation stage offset	0	-5.413686238853188e-06			
[s] Observation start time (MET)	342519678.184000	342518632.20613			
Observation start date	2008-11-08T08:20:13	2008-11-08T08:03:52			
[s] Observation end time (MET)	342539928.184000	342540918.78223			
Observation end date	2008-11-08T13:57:43	2008-11-08T14:15:18			

2.3 Aspect



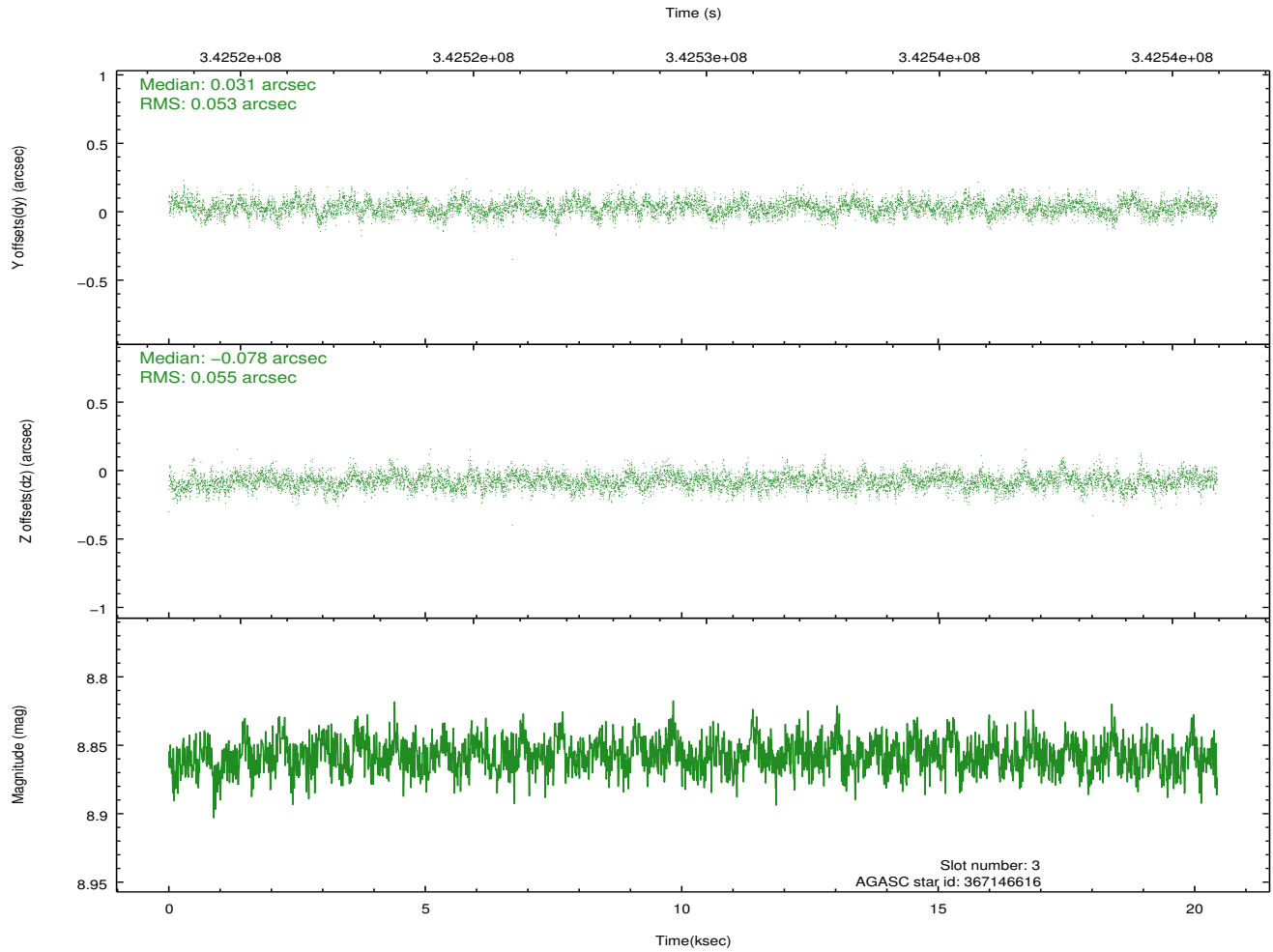
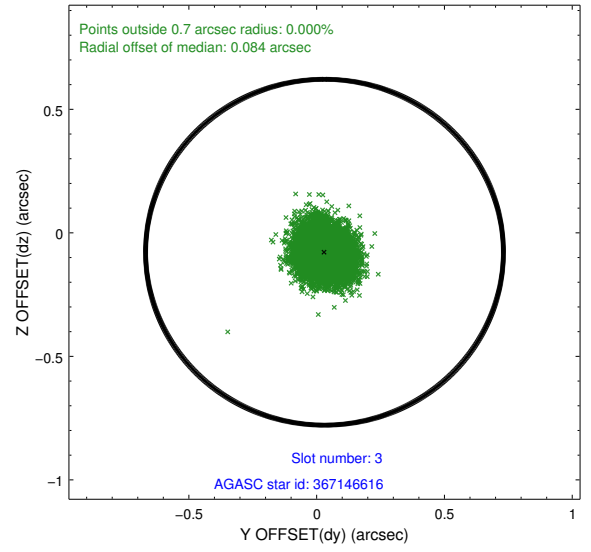
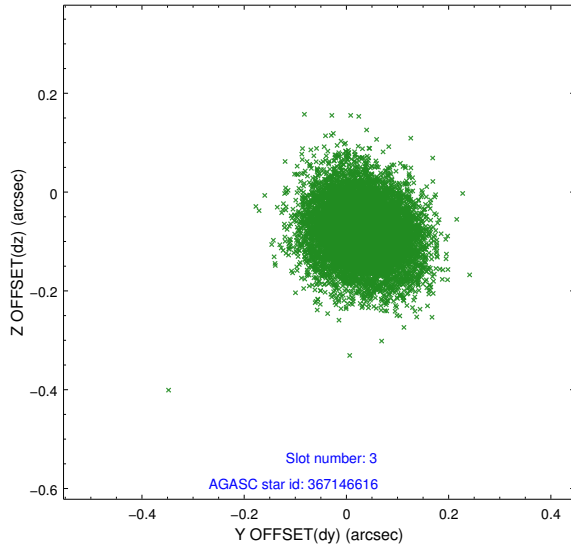


Slot Statistics

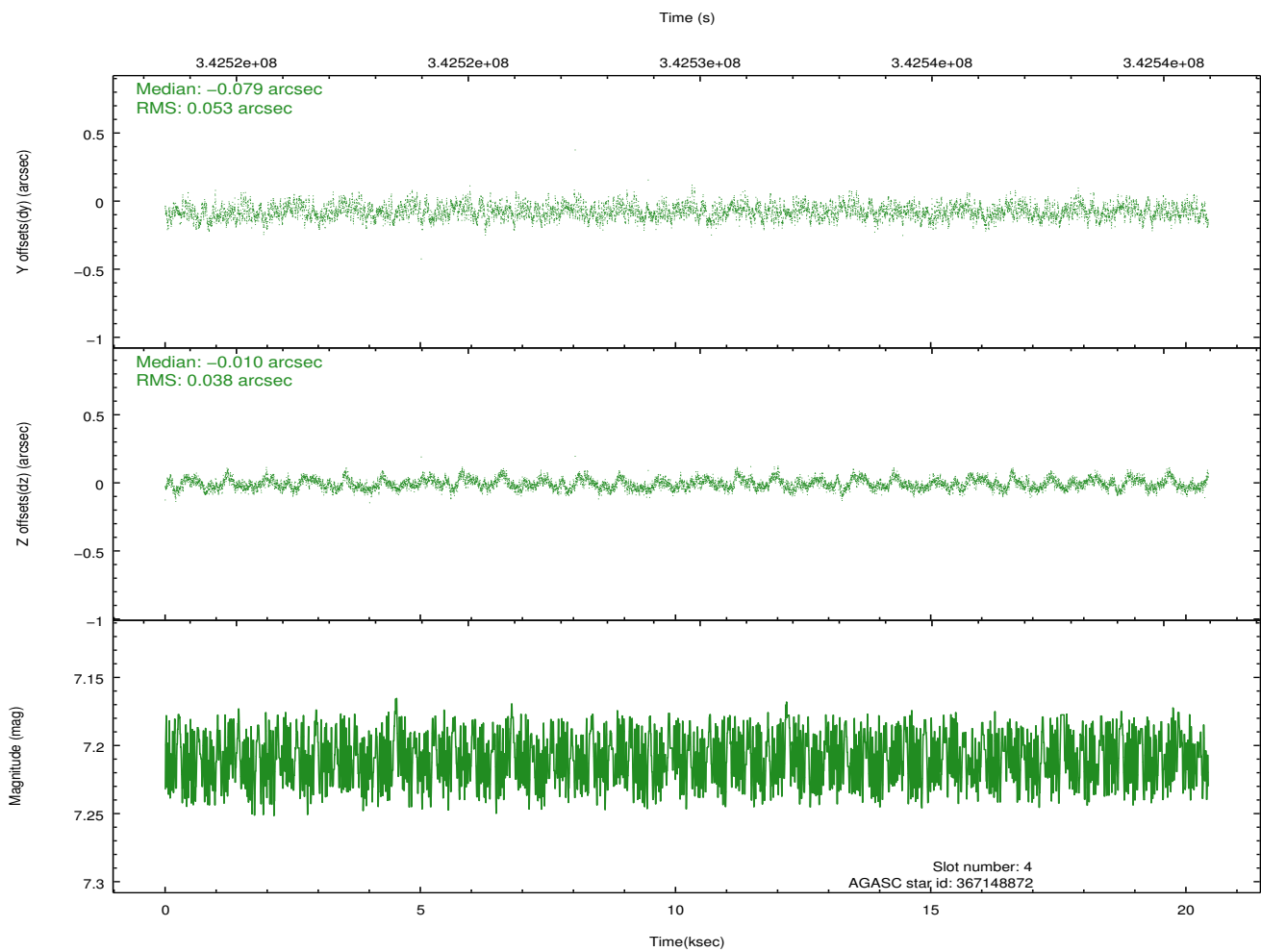
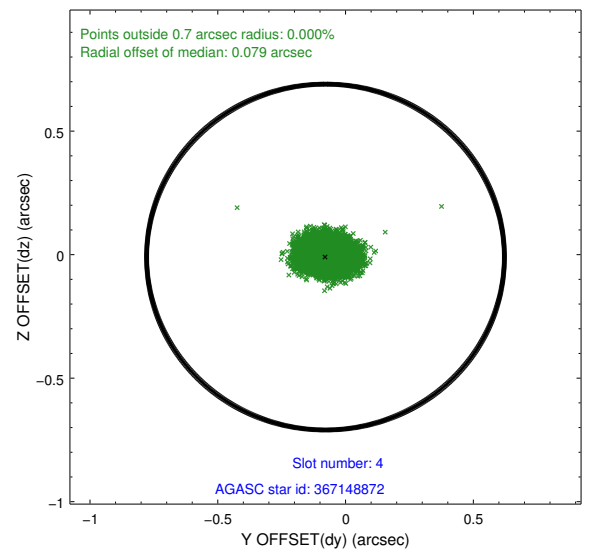
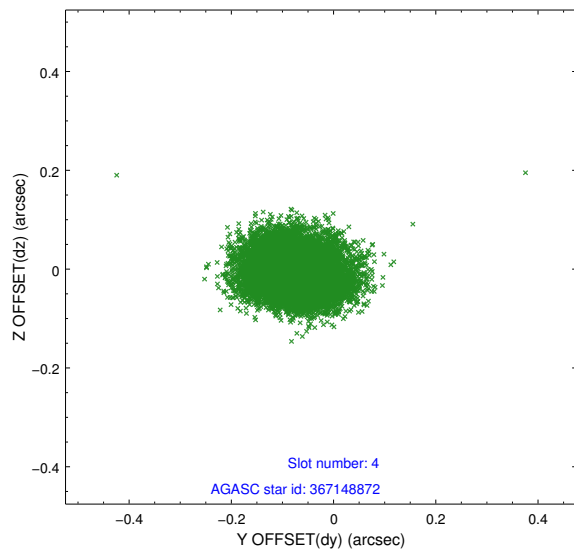
slot	status	id	mag	n_pts	med_dy	med_dz	dr1	dr2	ra	dec	mean_y	mean_z
0	FID	HRC-I-1	6.99	4985	-0.036	-0.015	0.012	0.024	0.000000	0.000000	-767.34	-1299.72
1	FID	HRC-I-2	7.02	4985	0.191	-0.121	0.018	0.030	0.000000	0.000000	845.36	-1301.66
2	FID	HRC-I-3	7.08	4984	-0.037	0.046	0.012	0.019	0.000000	0.000000	-1195.66	1004.64
3	GUIDE	367146616	8.86	9964	0.031	-0.078	0.081	0.133	11.418645	41.190163	-844.59	1843.85
4	GUIDE	367148872	7.21	9970	-0.079	-0.010	0.069	0.111	10.505940	40.688258	2062.72	856.90
5	GUIDE	367657896	9.01	9966	0.012	0.100	0.085	0.139	11.197765	41.313576	-860.05	1099.44
6	GUIDE	367663272	9.29	9961	0.009	0.088	0.109	0.177	10.656279	41.699429	-1154.56	-894.35
7	GUIDE	367674552	8.85	9964	0.024	-0.101	0.084	0.134	11.016238	41.570845	-1333.46	164.35

2.4 Star Slots

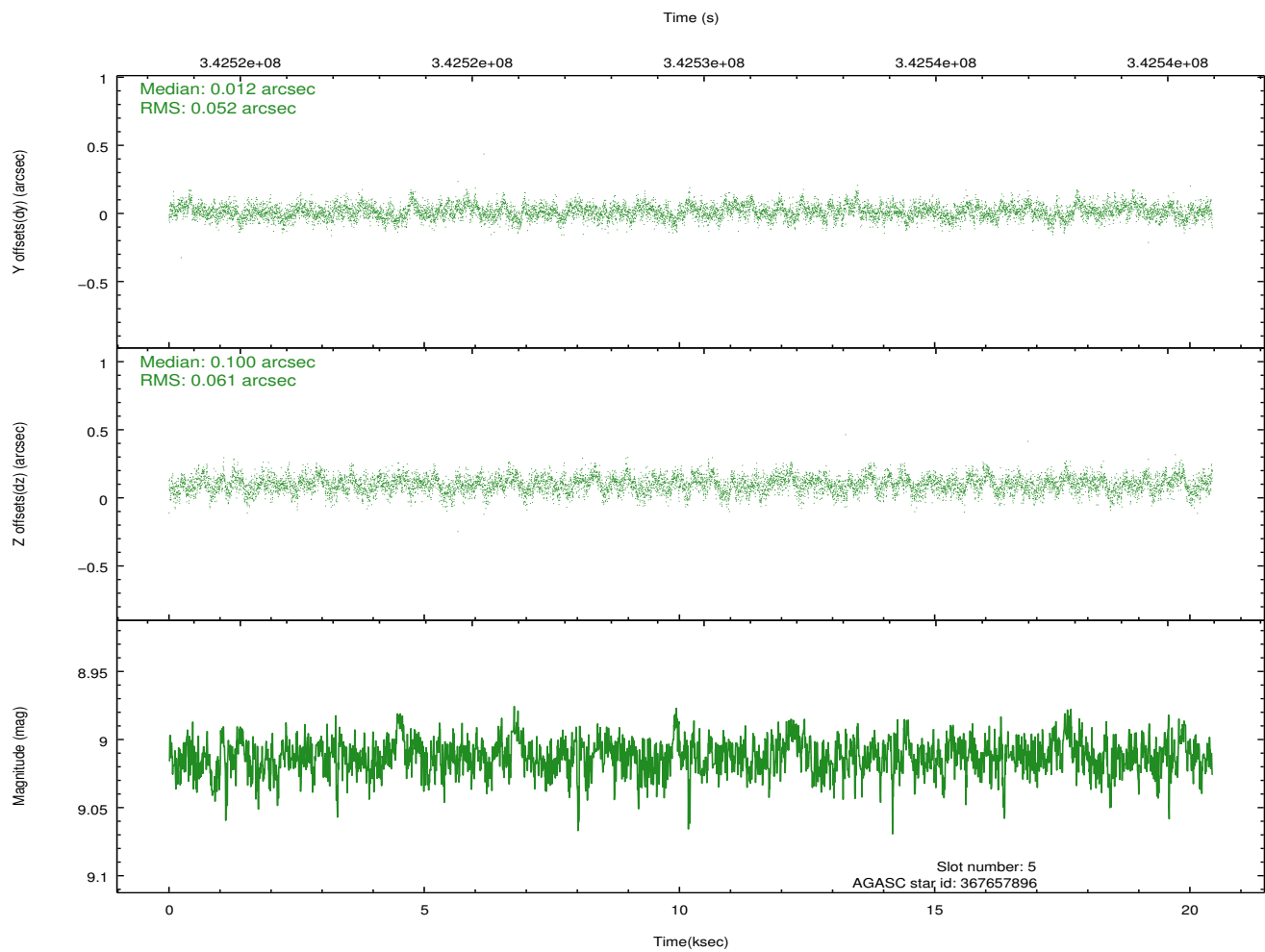
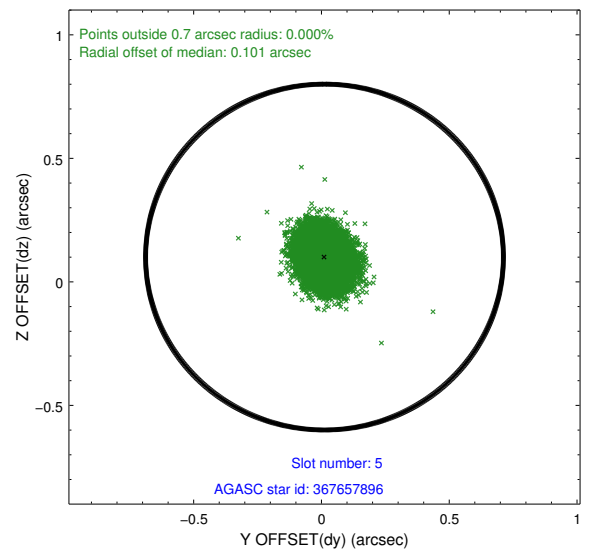
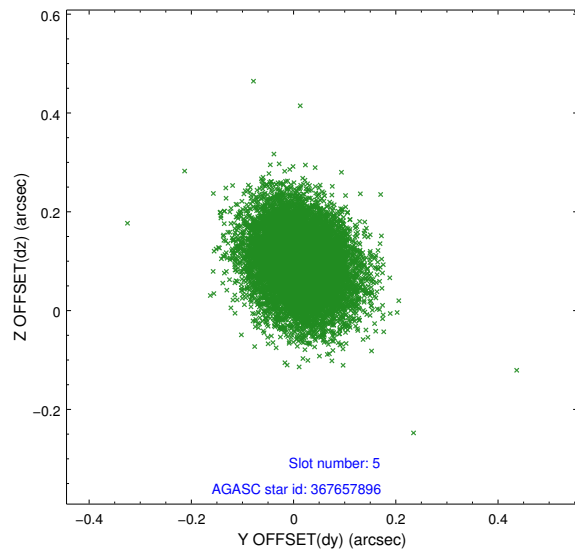
2.4.1 Slot 3



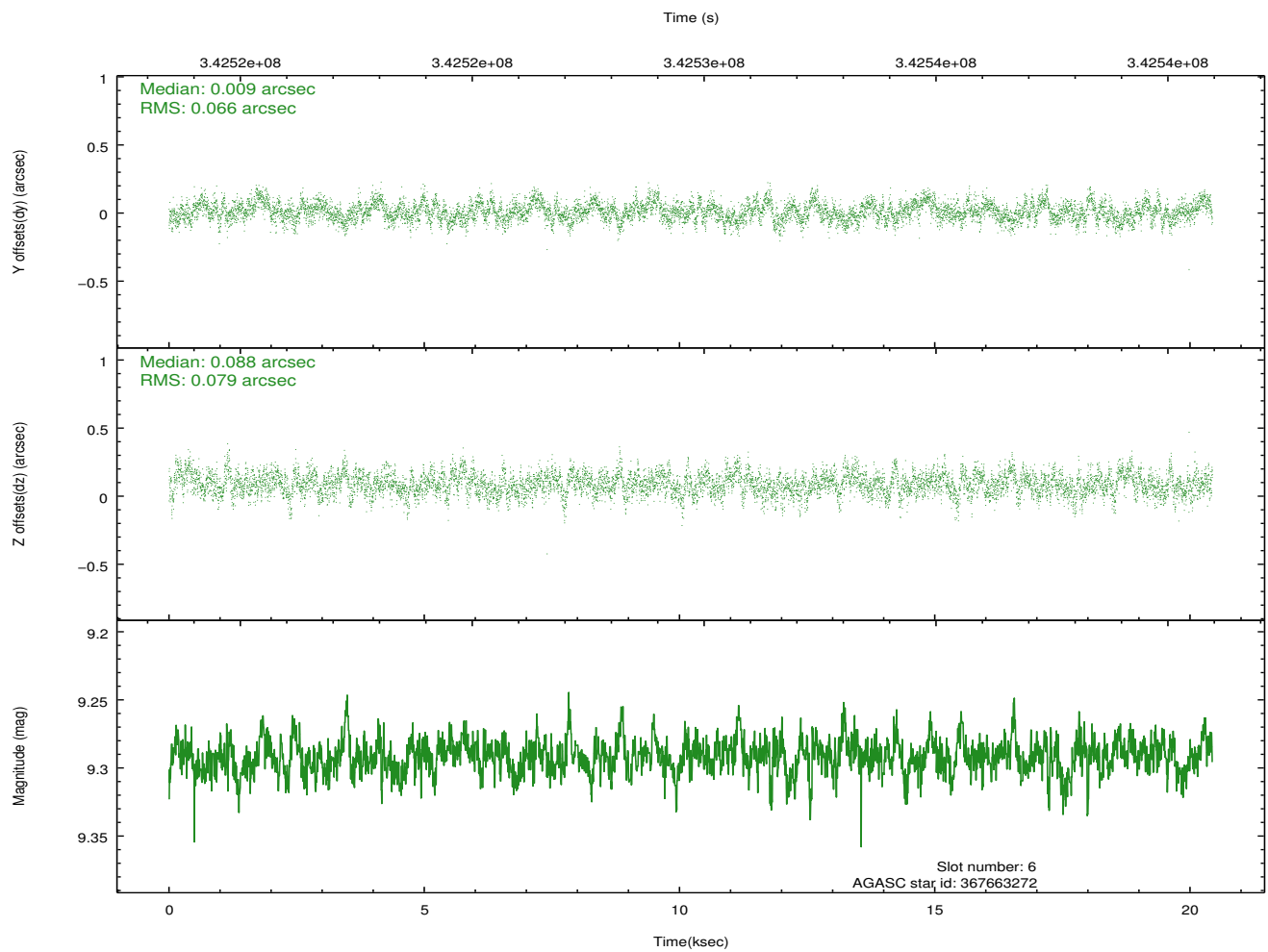
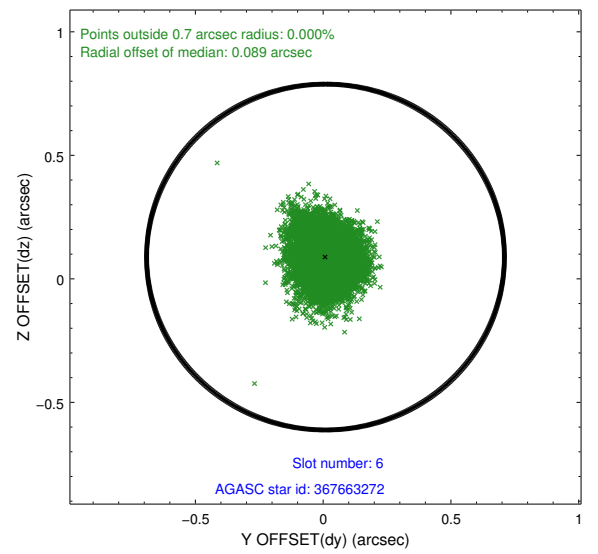
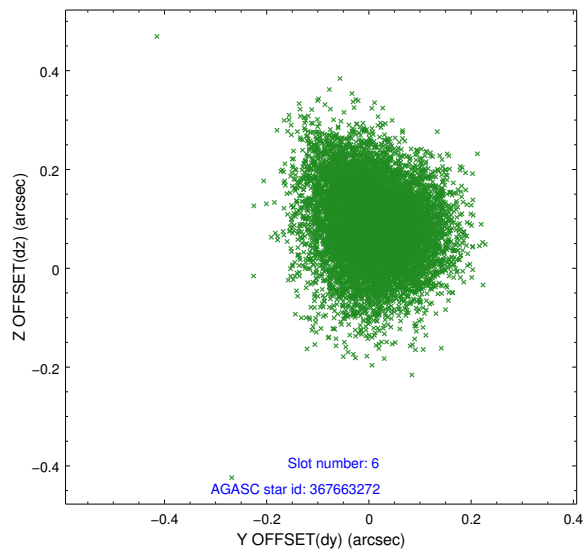
2.4.2 Slot 4



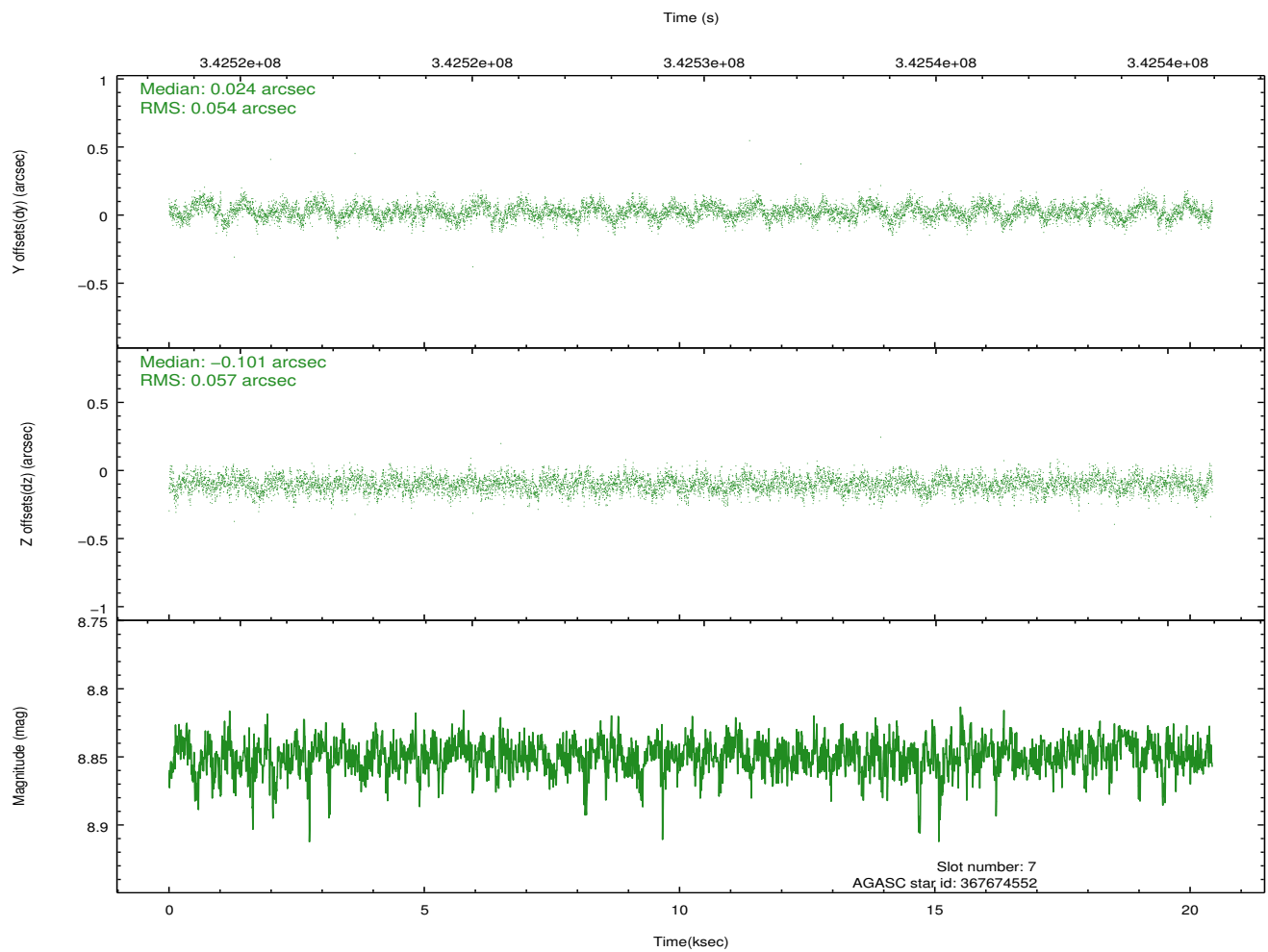
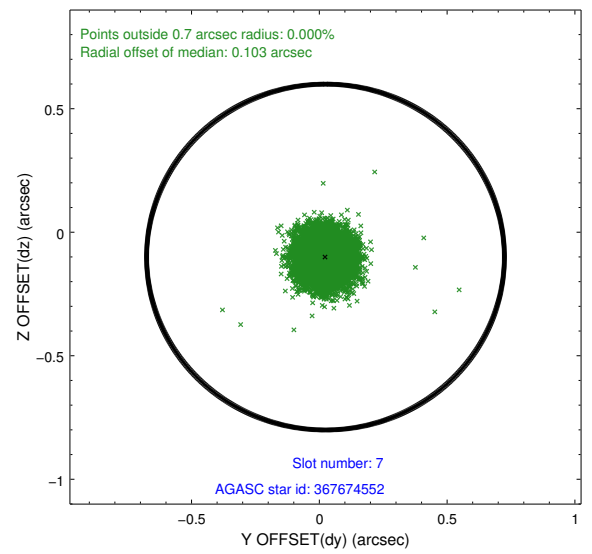
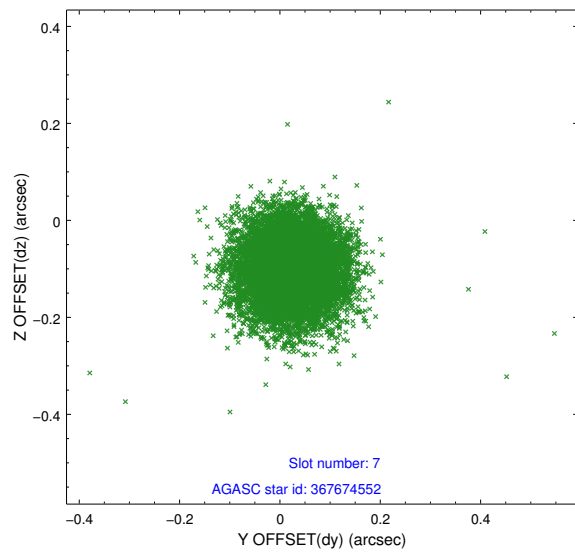
2.4.3 Slot 5



2.4.4 Slot 6

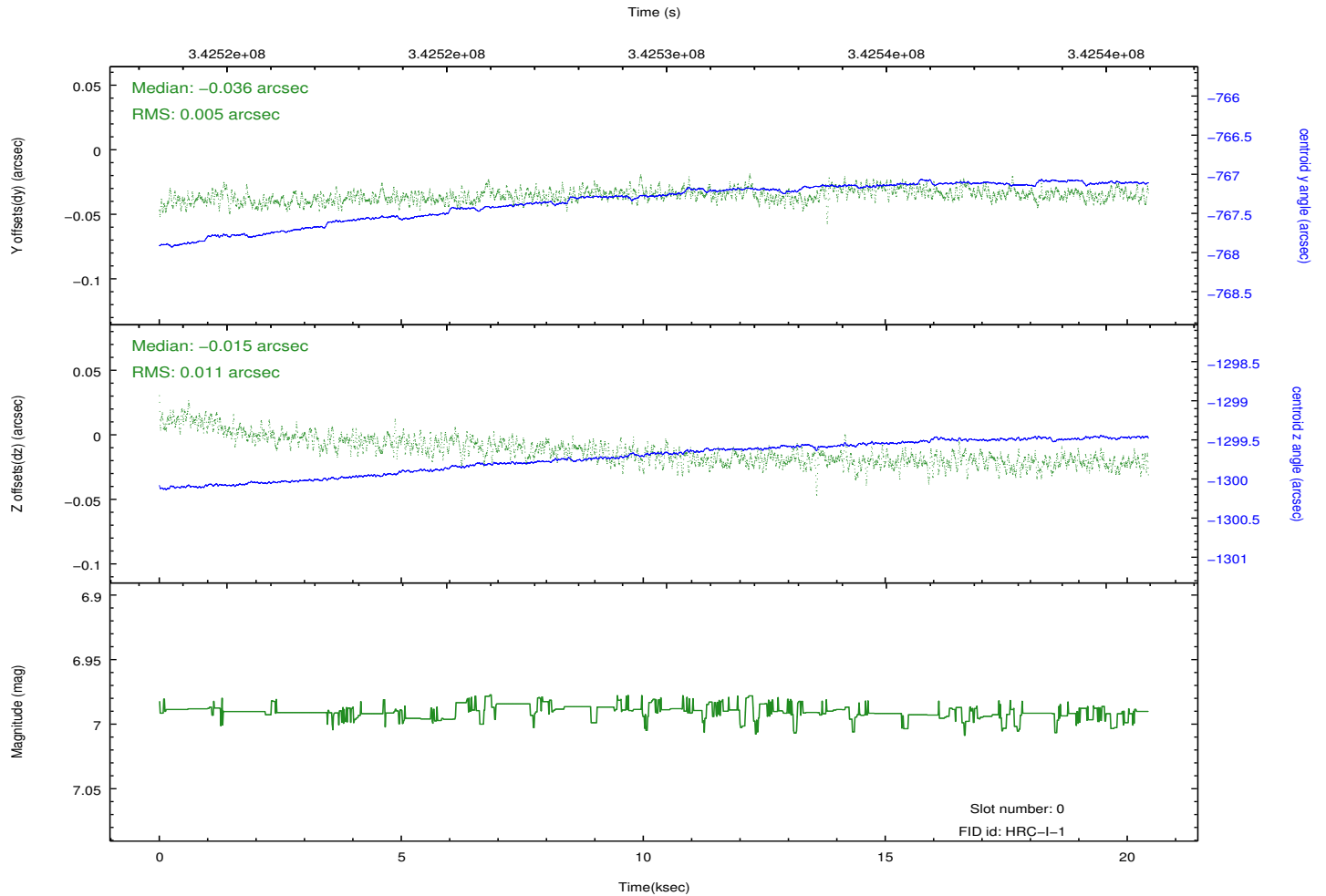
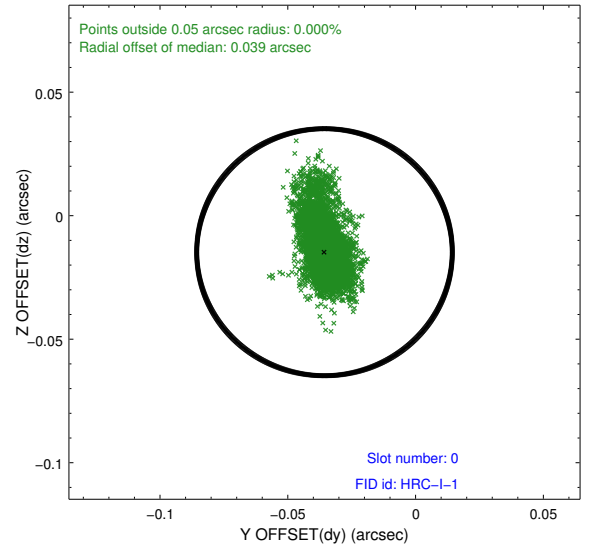
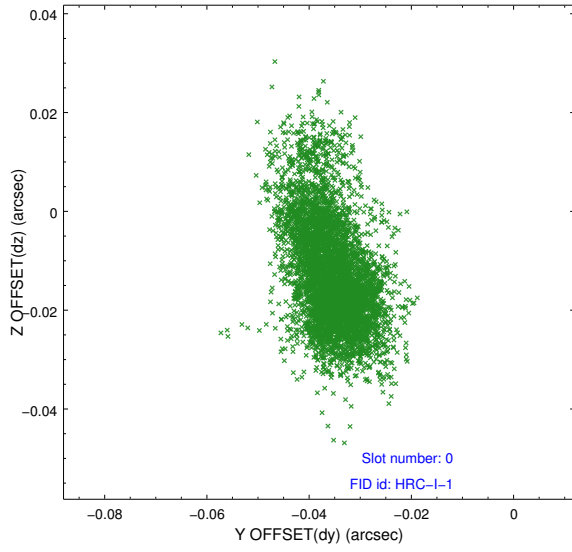


2.4.5 Slot 7

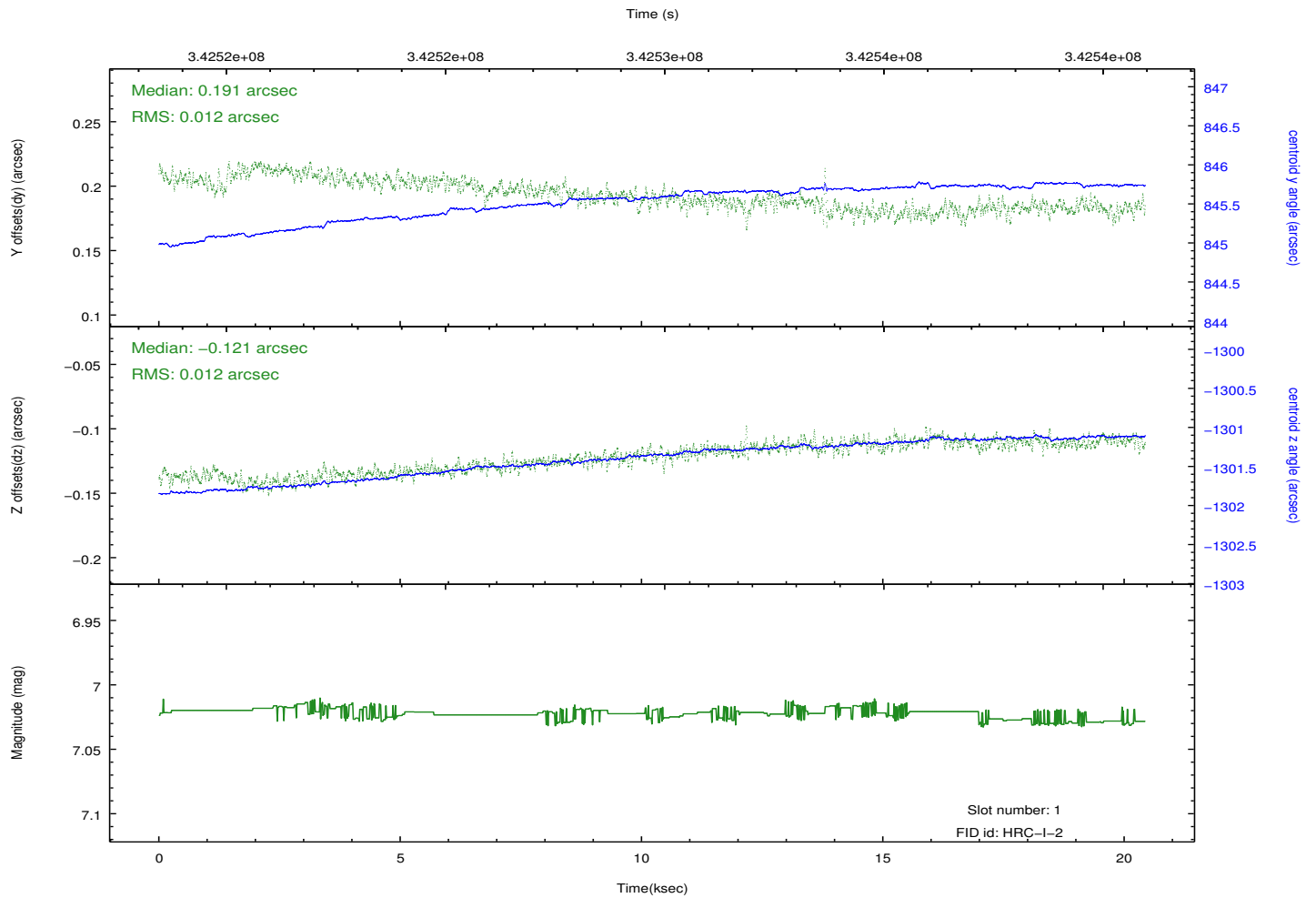
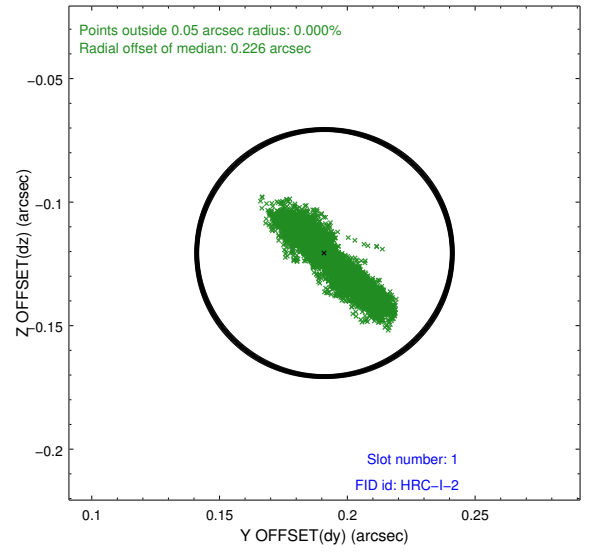
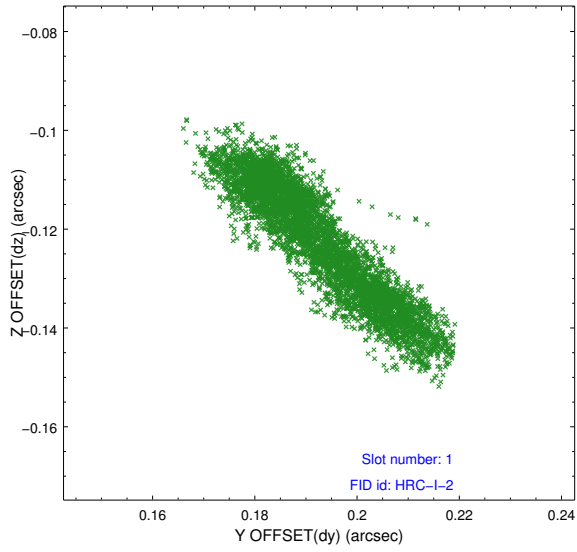


2.5 FID Slots

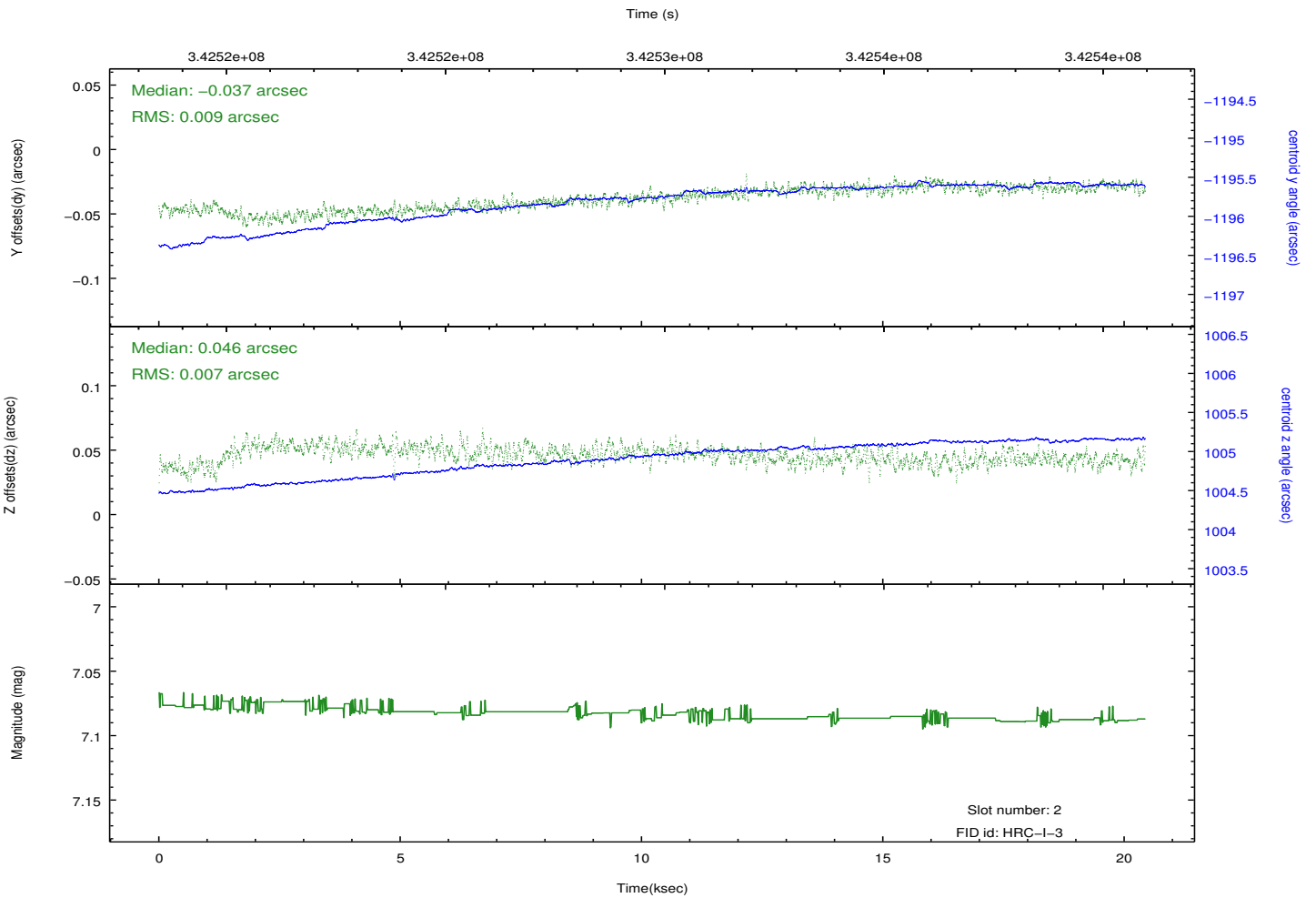
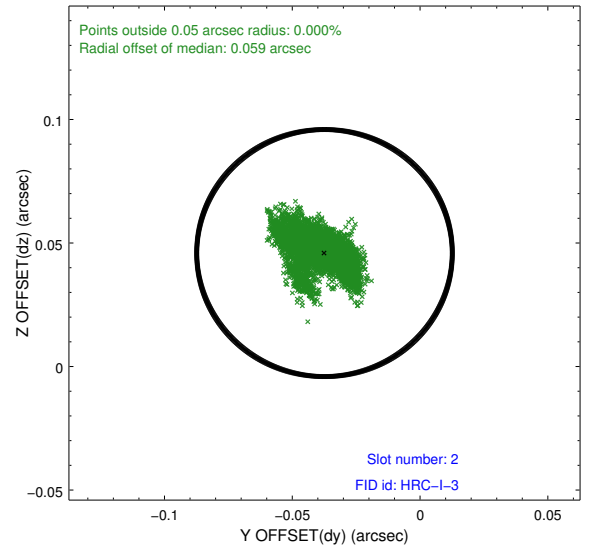
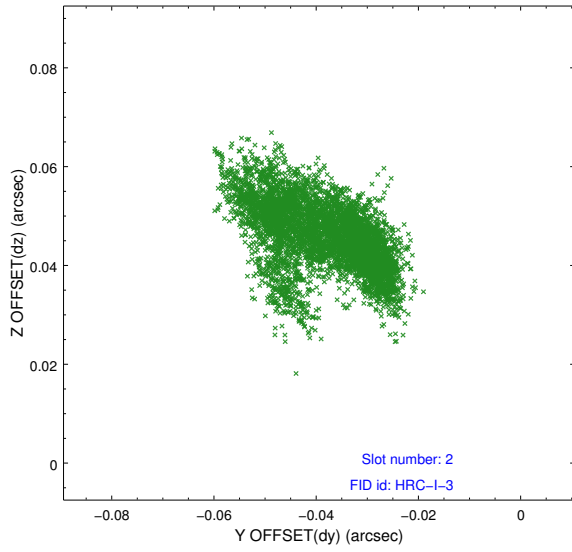
2.5.1 Slot 0



2.5.2 Slot 1



2.5.3 Slot 2



A Summary

A.1 Status

V&V Scientist	Beth Sundheim
V&V Date (YYYY-MM-DD)	2012.08.20
V&V Edition	1
V&V Disposition and Status	OK
V&V Charge Time	20.4356822

A.2 Comments

Joint proposal with XMM.

Window preference met.