

V&V Reference Report

L2 ASCDS Version : 8.4.4

Observation 9875 - L2 Version 3
Chandra X-Ray Center

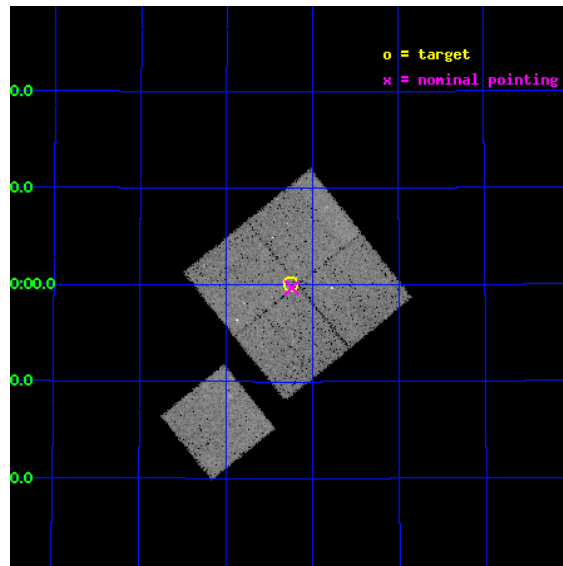
L2 Processing Date : May 21 2012

Contents

1	Front	2
2	OBI	3
2.1	OBI	3
2.1.1	Images	3
2.1.2	Bias	3
2.1.3	Parameters	4
2.1.4	Events	4
2.2	Compared Parameters	5
2.3	Aspect	6
2.4	Star Slots	9
2.4.1	Slot 3	9
2.4.2	Slot 4	10
2.4.3	Slot 5	11
2.4.4	Slot 6	12
2.4.5	Slot 7	13
2.5	FID Slots	14
2.5.1	Slot 0	14
2.5.2	Slot 1	15
2.5.3	Slot 2	16
A	Summary	17
A.1	Status	17
A.2	Comments	17

1 Front

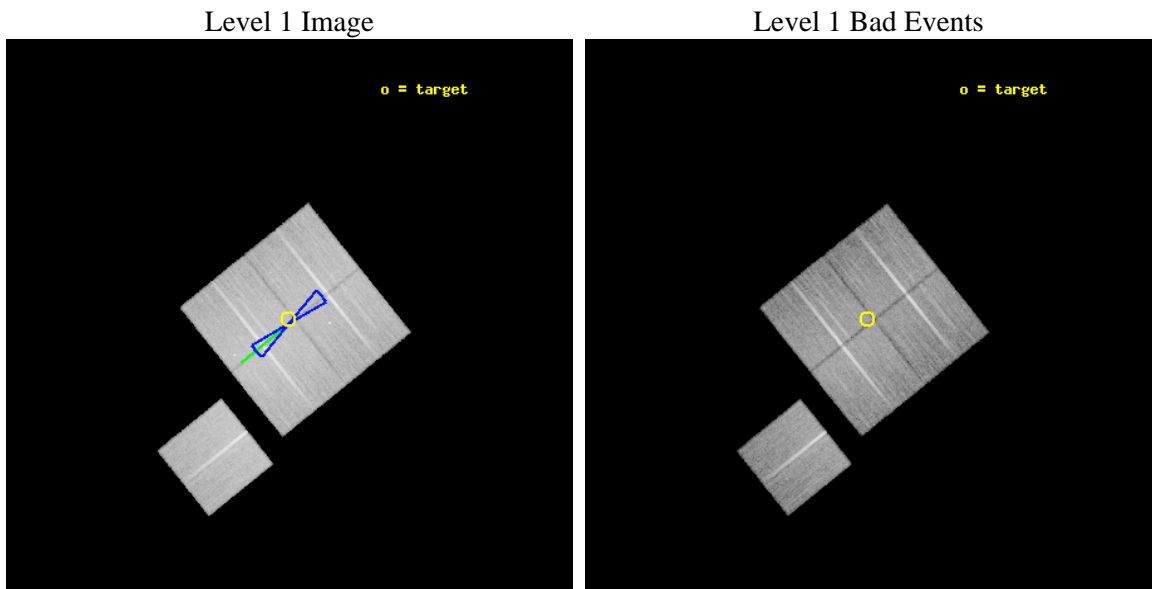
seq_num	900796	Sequence number
obs_id	9875	Observation id
title	The Evolution of Faint AGN at High Redshift	Proposal title
observer	Prof Kirpal Nandra	Principal investigator
object	AEGIS-1	Source name
dtcycle	0	
cycle	P	events from which exps? Prim/Second/Both
ra_targ	215.064583	Observer's specified target RA [deg]
dec_targ	53.002694	Observer's specified target Dec [deg]
ra_nom	215.05968225887	Nominal RA [deg]
dec_nom	52.995168258124	Nominal Dec [deg]
roll_nom	231.23431445652	Nominal Roll [deg]
revision	3	Processing version of data
ontime	25537.71823591	Sum of GTIs [s]
livetime	25204.049146563	Livetime [s]
ontime0	25537.718365431	Sum of GTIs [s]
ontime1	25540.859226108	Sum of GTIs [s]
ontime2	25540.8592062	Sum of GTIs [s]
ontime3	25537.71823591	Sum of GTIs [s]
ontime6	25537.718275845	Sum of GTIs [s]
l2events	88314	Number of level 2 events



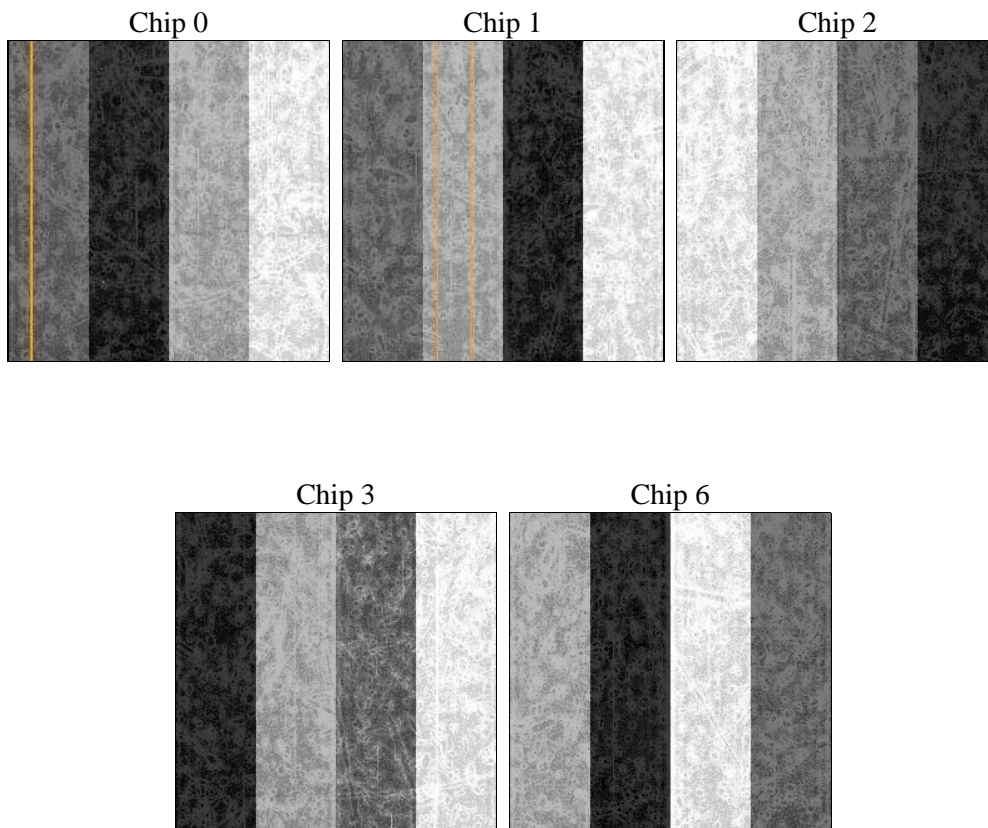
2 OBI

2.1 OBI

2.1.1 Images



2.1.2 Bias



2.1.3 Parameters

obi_num	0	Obi number	sched_exp_time	25500.000000	[s] Scheduled observation exposure time
ascdsver	8.4.4	Processing system revision	ontime	25537.71823591	Sum of GTIs [s]
caldbver	4.4.9	 	ontime0	25537.718365431	Sum of GTIs [s]
date	2012-05-21T13:14:03	Date and time of file creation	ontime1	25540.859226108	Sum of GTIs [s]
revision	3	Processing version of data	ontime2	25540.8592062	Sum of GTIs [s]
			ontime3	25537.71823591	Sum of GTIs [s]
			ontime6	25537.718275845	Sum of GTIs [s]
			l1events	1010668	Number of level 1 events

2.1.4 Events

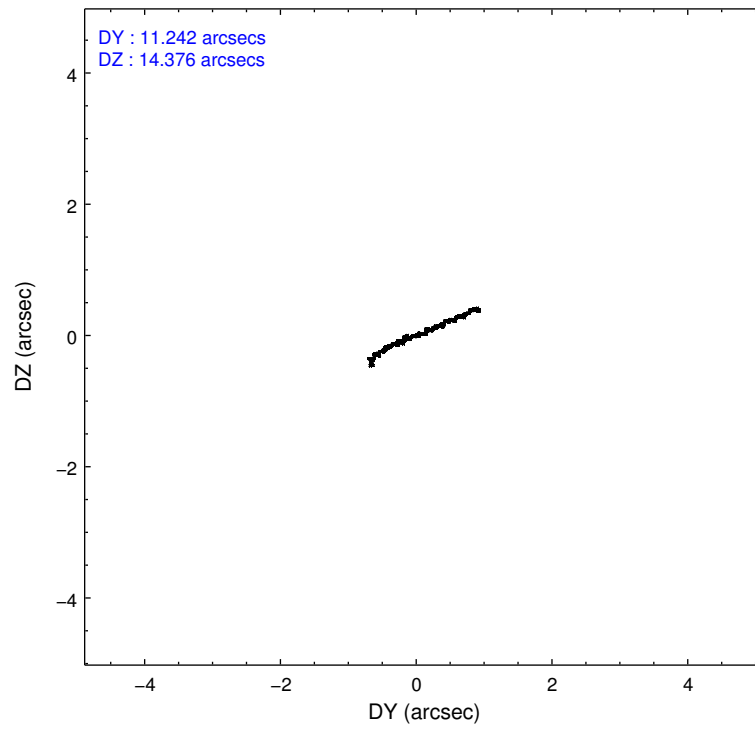
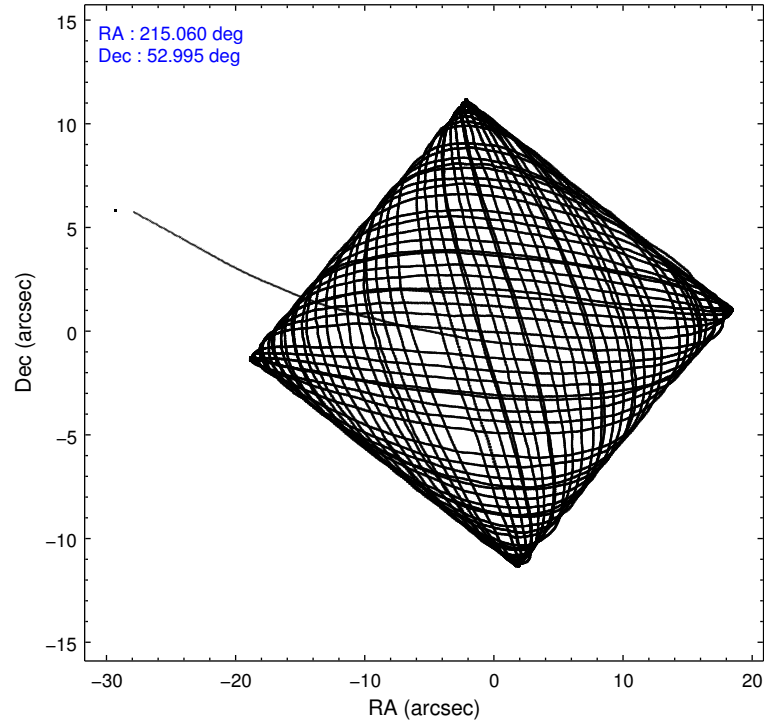
	ccd 0	ccd 1	ccd 2	ccd 3	ccd 6
level 1 events	190124	193392	217778	204654	204720
rejected events	169074	169630	197571	184462	183609
rejected %	88%	87%	90%	90%	89%

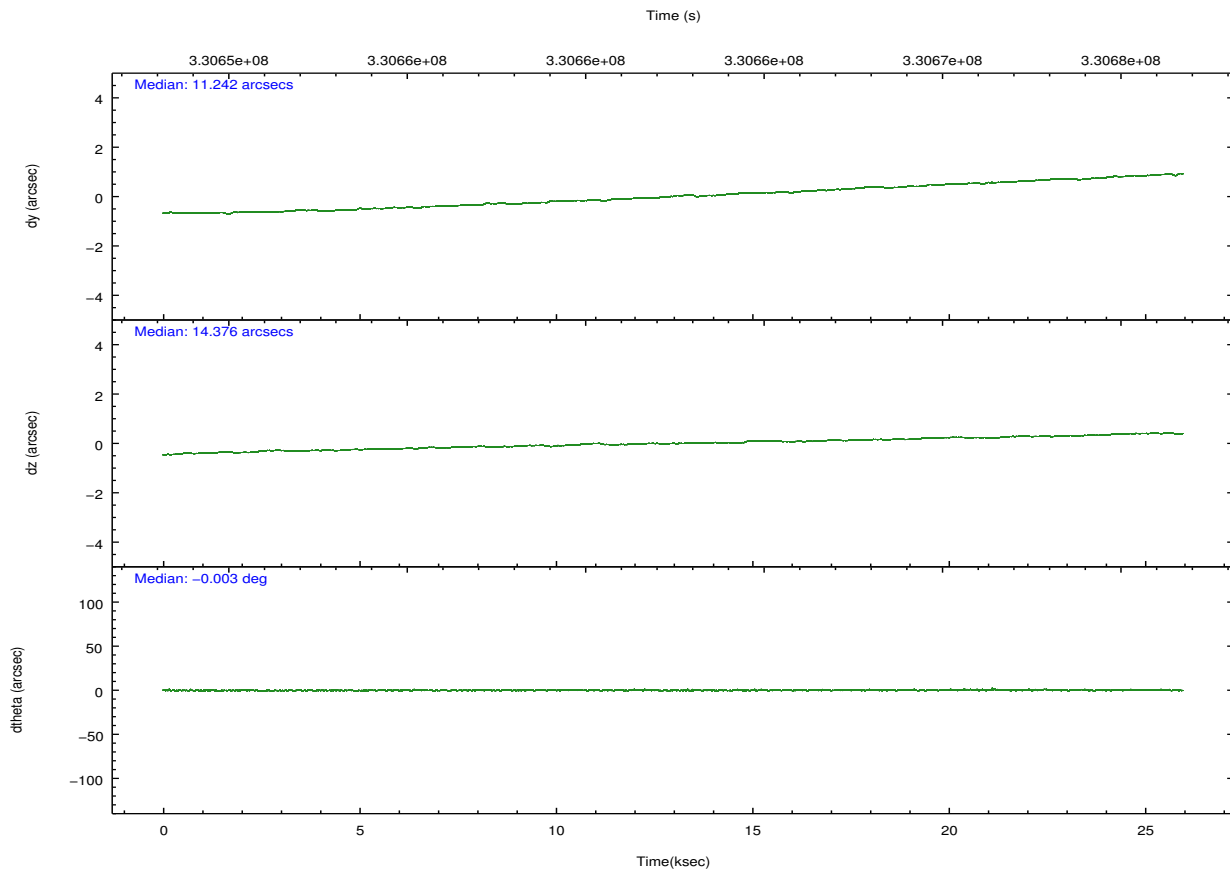
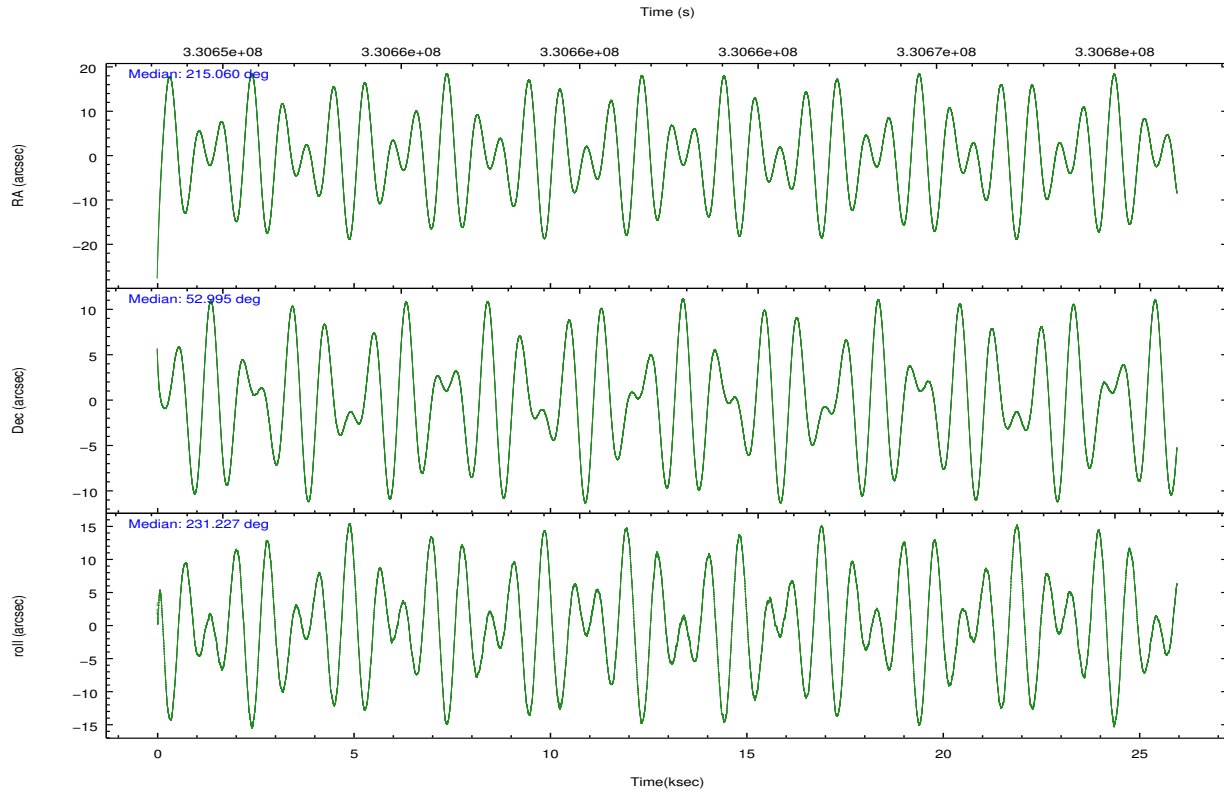
	ccd 0	ccd 1	ccd 2	ccd 3	ccd 6
grade 0 events	7411	8505	7081	7402	7309
	3%	4%	3%	3%	3%
grade 1 events	113	88	109	104	108
	0%	0%	0%	0%	0%
grade 2 events	5091	5506	4911	4420	4732
	2%	2%	2%	2%	2%
grade 3 events	2407	2517	2237	2247	2259
	1%	1%	1%	1%	1%
grade 4 events	2127	2450	2299	2188	2321
	1%	1%	1%	1%	1%
grade 5 events	7442	8043	6802	8460	8333
	3%	4%	3%	4%	4%
grade 6 events	4018	4790	3681	3937	4494
	2%	2%	1%	1%	2%
grade 7 events	161515	161493	190658	175896	175164
	84%	83%	87%	85%	85%

2.2 Compared Parameters

Parameter	Planned	Actual	Parameter	Planned	Actual
Instrument	ACIS	ACIS	Obspar format version number	7	7
Detector	ACIS-01236	ACIS-01236	Obspar file type	PREDICTED	ACTUAL
Grating	NONE	NONE	Obspar update status	NONE	UPDATED
Data mode	VFAINT	VFAINT	CCD I0 on	Y	Y
Observation mode	POINTING	POINTING	CCD I1 on	Y	Y
[deg] Pointing RA	215.066453	215.0596822588667	CCD I2 on	Y	Y
[deg] Pointing Dec	53.022374	52.99516825812398	CCD I3 on	Y	Y
[deg] Pointing Roll	231.020236	231.2343144565217	CCD S0 on	N	N
[deg] Roll angle	50.000000	50.000000	CCD S1 on	N	N
[deg] Roll tolerance	10.000000	10.000000	CCD S2 on	O1	Y
Roll constraint allows 180D rotation	Y	Y	CCD S3 on	N	N
[mm] SIM focus pos	-0.782348	-0.7809083437167272	CCD S4 on	N	N
[mm] SIM defocus	0	0.001439871863259334	CCD S5 on	N	N
[mm] SIM translation stage pos	-233.592463	-233.5874344608287	Number of optional ACIS chips dropped	0	0
[mm] SIM translation stage offset	0	-0.005018542100998502	On-chip summing requested	N	N
[s] Observation start time (MET)	330649920.184000	330648854.07581	Subarray requested	NONE	NONE
Observation start date	2008-06-23T23:10:55	2008-06-23T22:54:14	Alternating exposures requested	N	N
[s] Observation end time (MET)	330675420.184000	330676074.48964	[s] Primary exposure time	0.000000	3.1
Observation end date	2008-06-24T06:15:55	2008-06-24T06:27:54			
Read mode	TIMED	TIMED			

2.3 Aspect



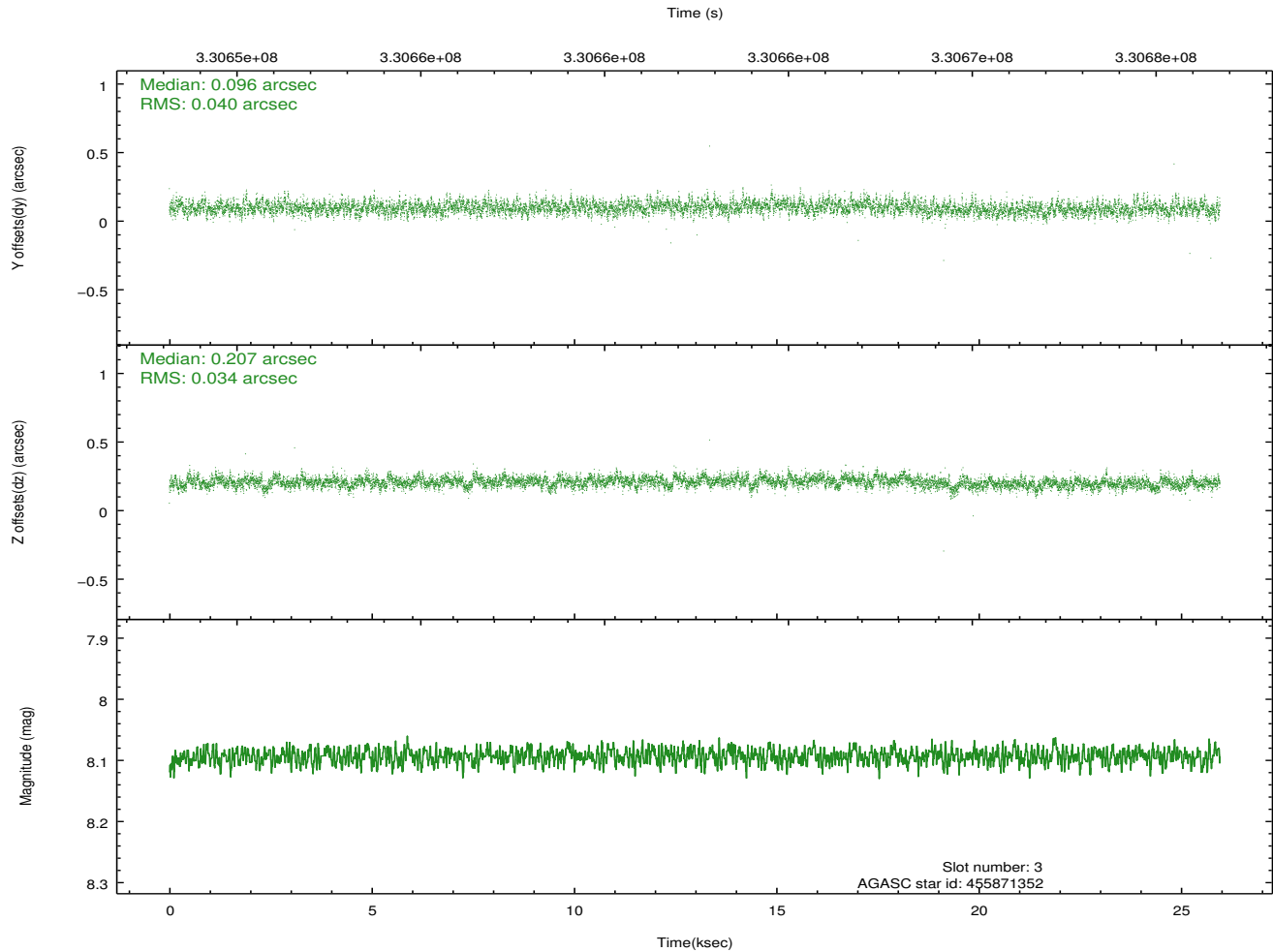
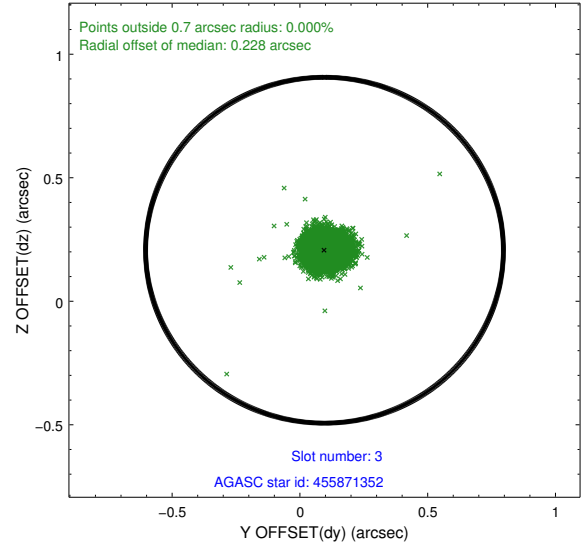
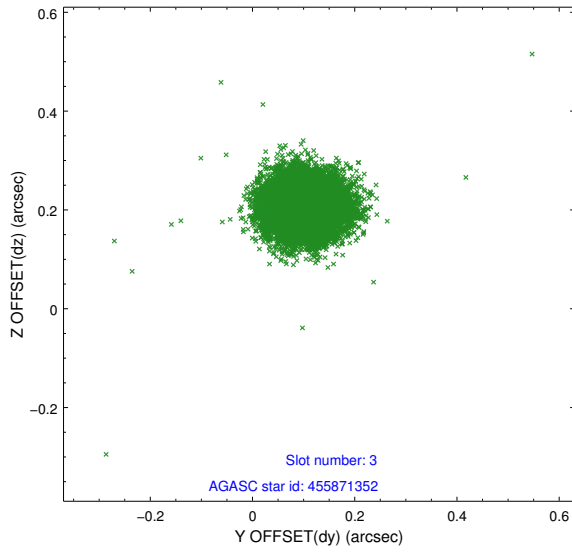


Slot Statistics

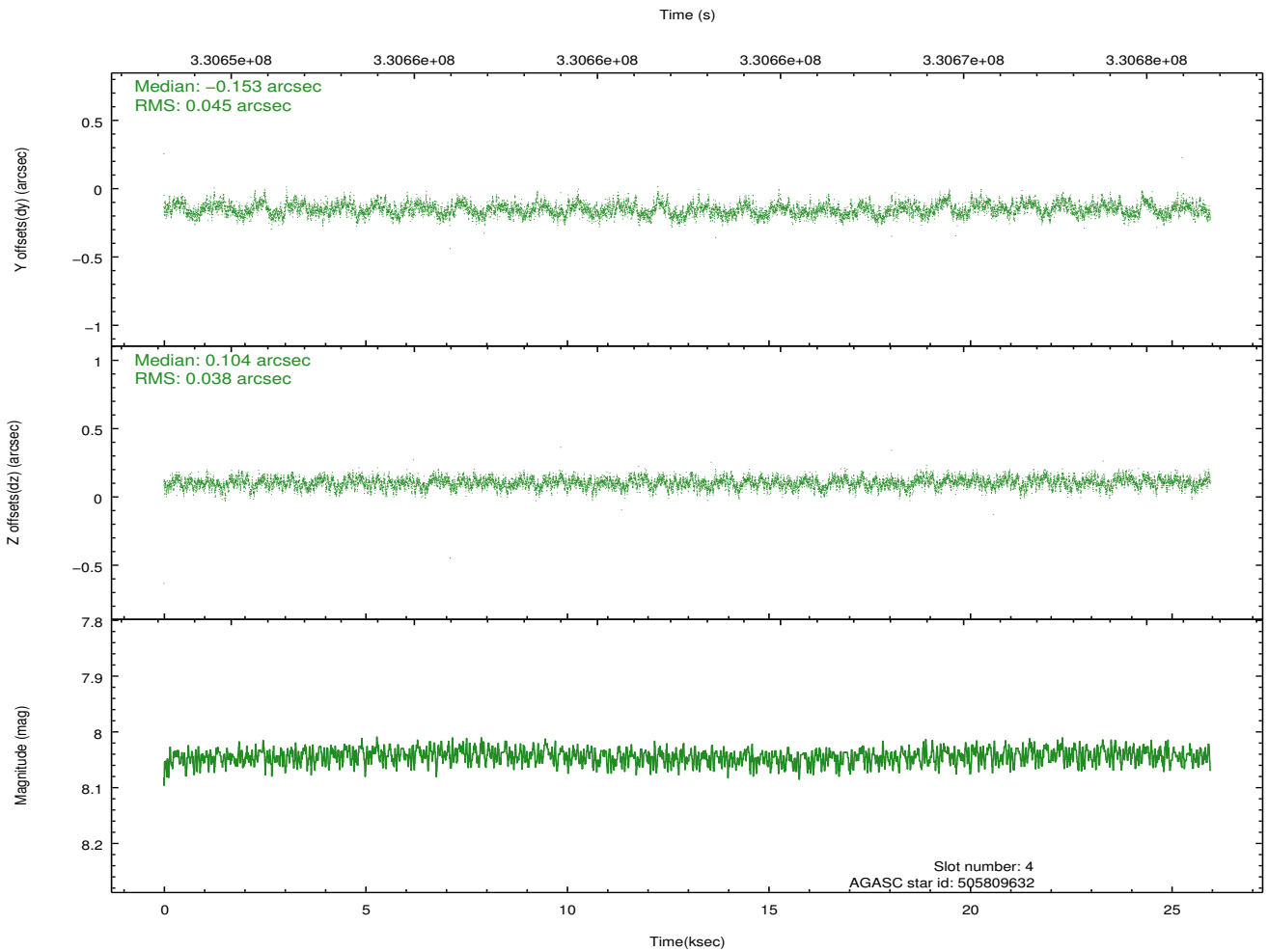
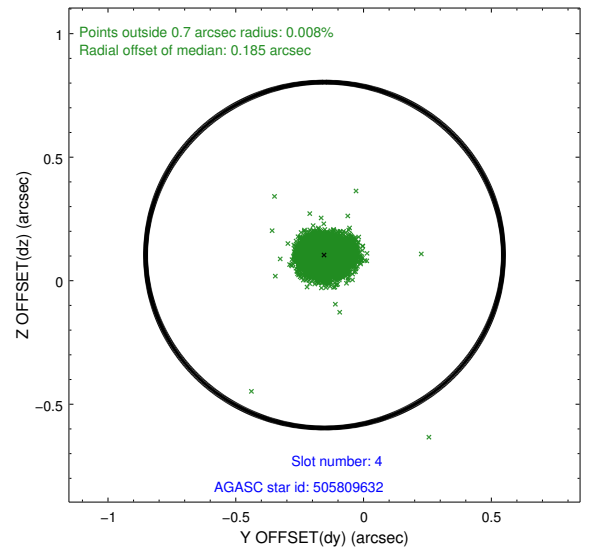
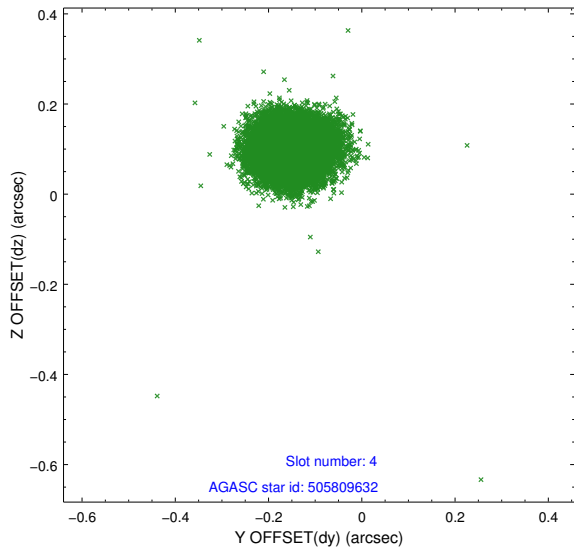
slot	status	id	mag	n_pts	med_dy	med_dz	dr1	dr2	ra	dec	mean_y	mean_z
0	FID	ACIS-I-1	7.00	6331	-0.006	0.044	0.011	0.016	0.000000	0.000000	928.30	-837.91
1	FID	ACIS-I-5	6.99	6332	-0.151	0.021	0.014	0.024	0.000000	0.000000	-1819.91	1059.47
2	FID	ACIS-I-6	7.00	6332	0.065	0.007	0.013	0.020	0.000000	0.000000	393.77	1704.11
3	GUIDE	455871352	8.09	12665	0.096	0.207	0.055	0.089	215.099961	52.172669	2331.55	1982.42
4	GUIDE	505809632	8.04	12664	-0.153	0.104	0.062	0.099	215.499426	53.521185	-1980.72	-410.83
5	GUIDE	505812088	8.13	12650	0.043	-0.122	0.067	0.107	214.186617	53.263562	508.12	-2026.19
6	GUIDE	505812376	7.68	12664	0.094	-0.205	0.050	0.080	214.039537	52.937930	1626.02	-1550.82
7	GUIDE	505815928	8.32	12661	-0.088	0.017	0.055	0.094	216.234742	53.074559	-1751.40	1832.87

2.4 Star Slots

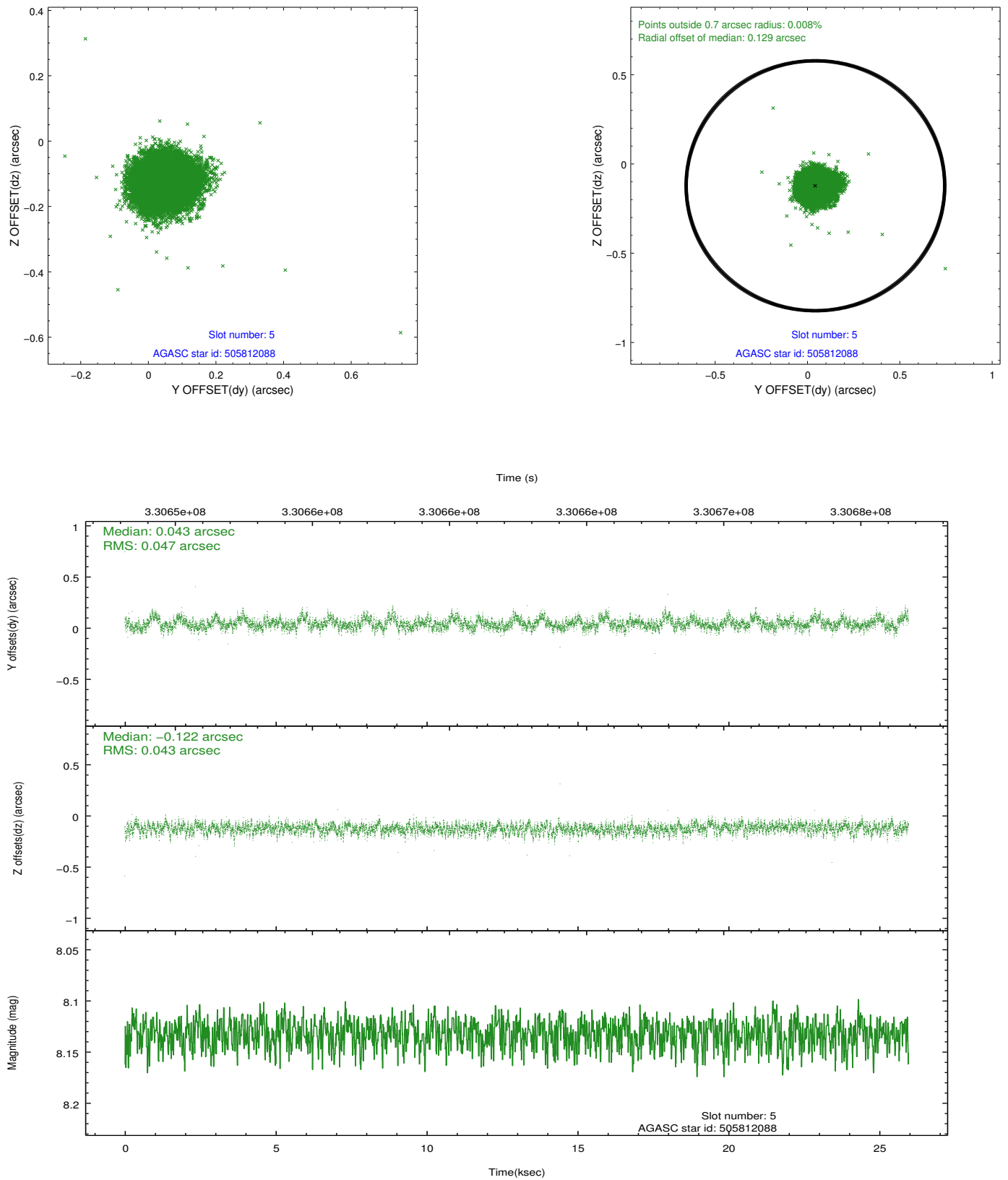
2.4.1 Slot 3



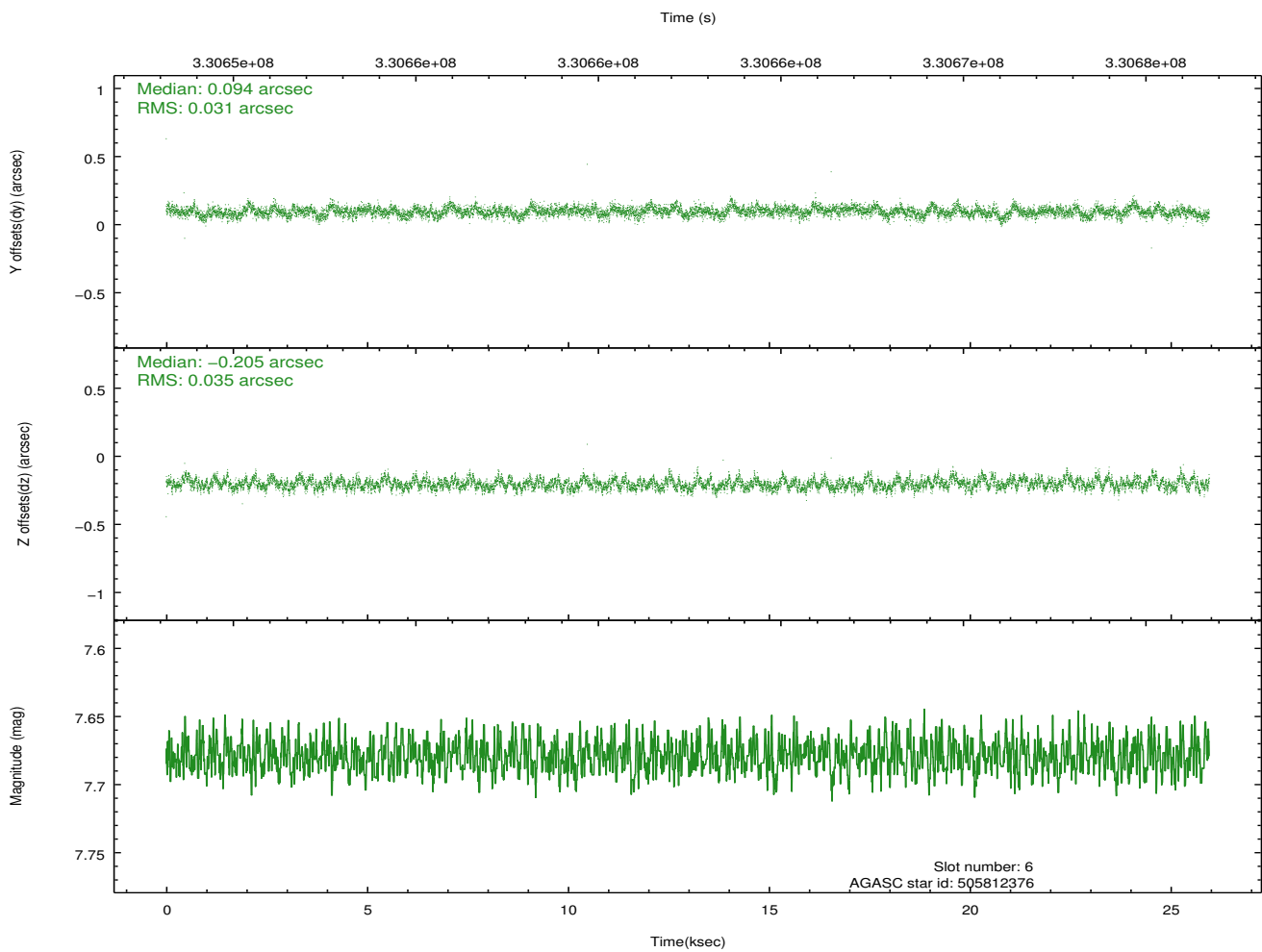
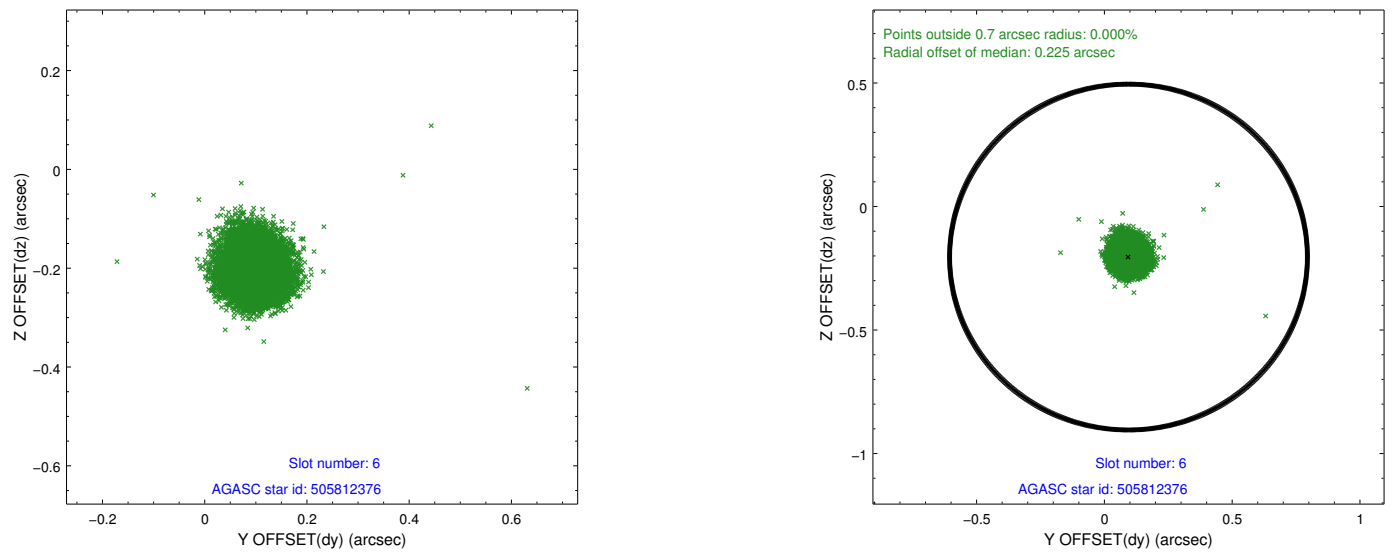
2.4.2 Slot 4



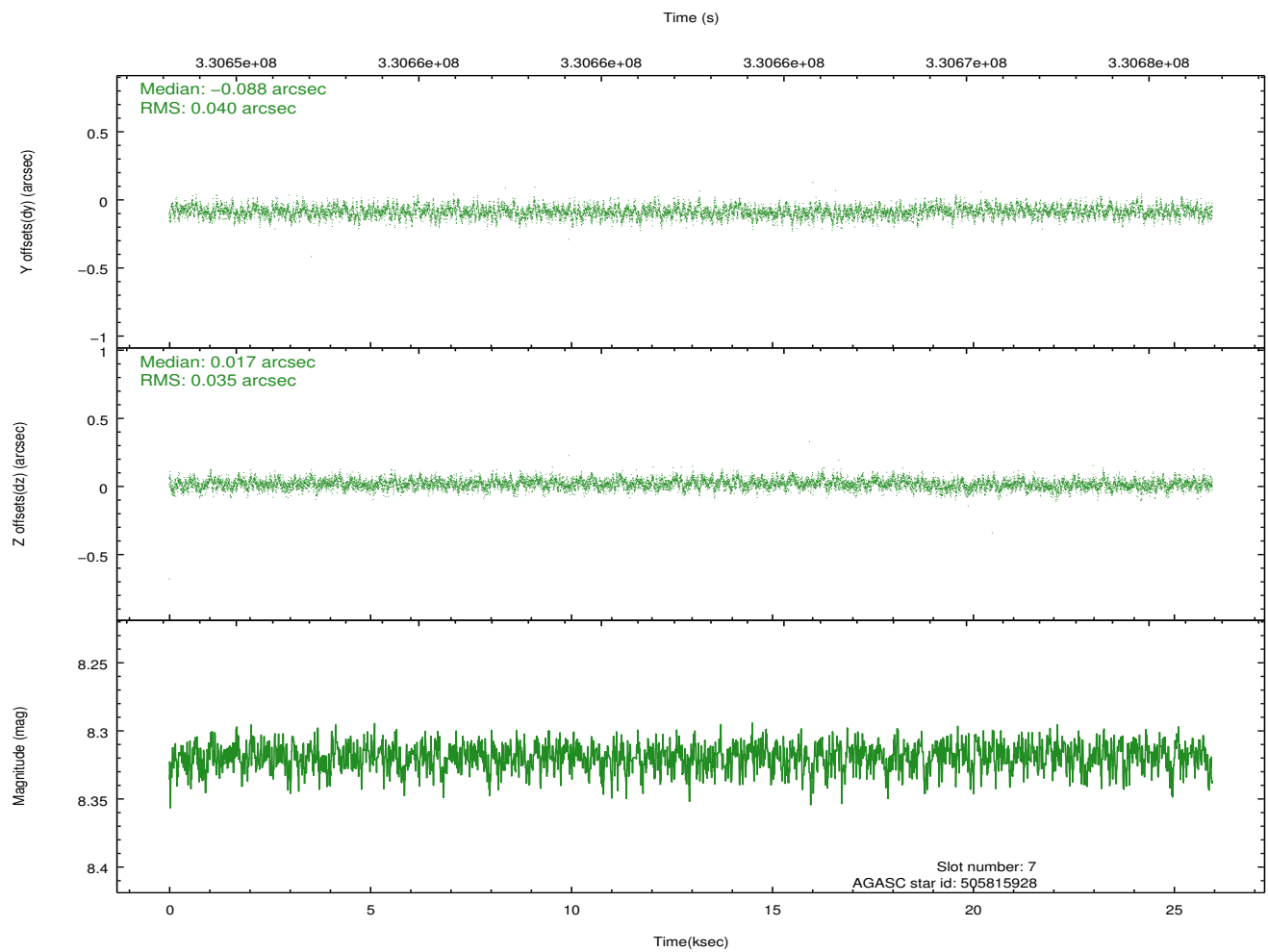
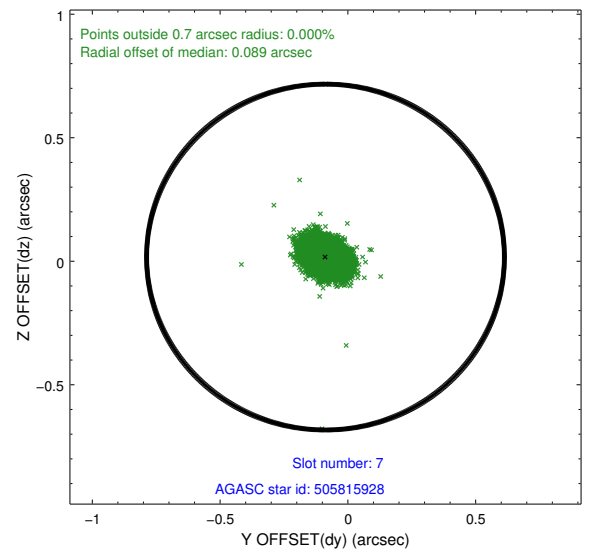
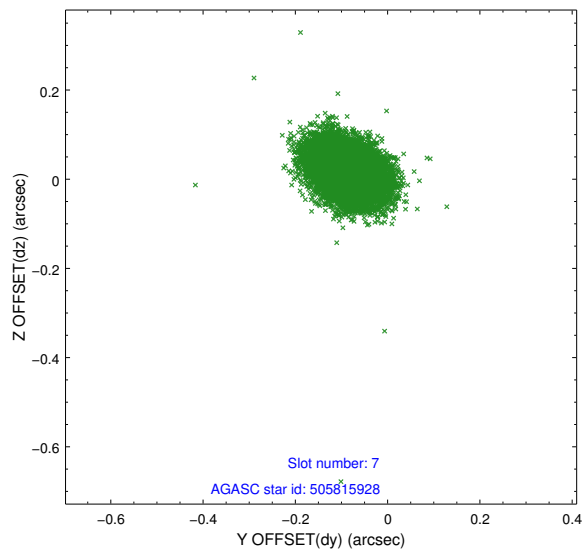
2.4.3 Slot 5



2.4.4 Slot 6

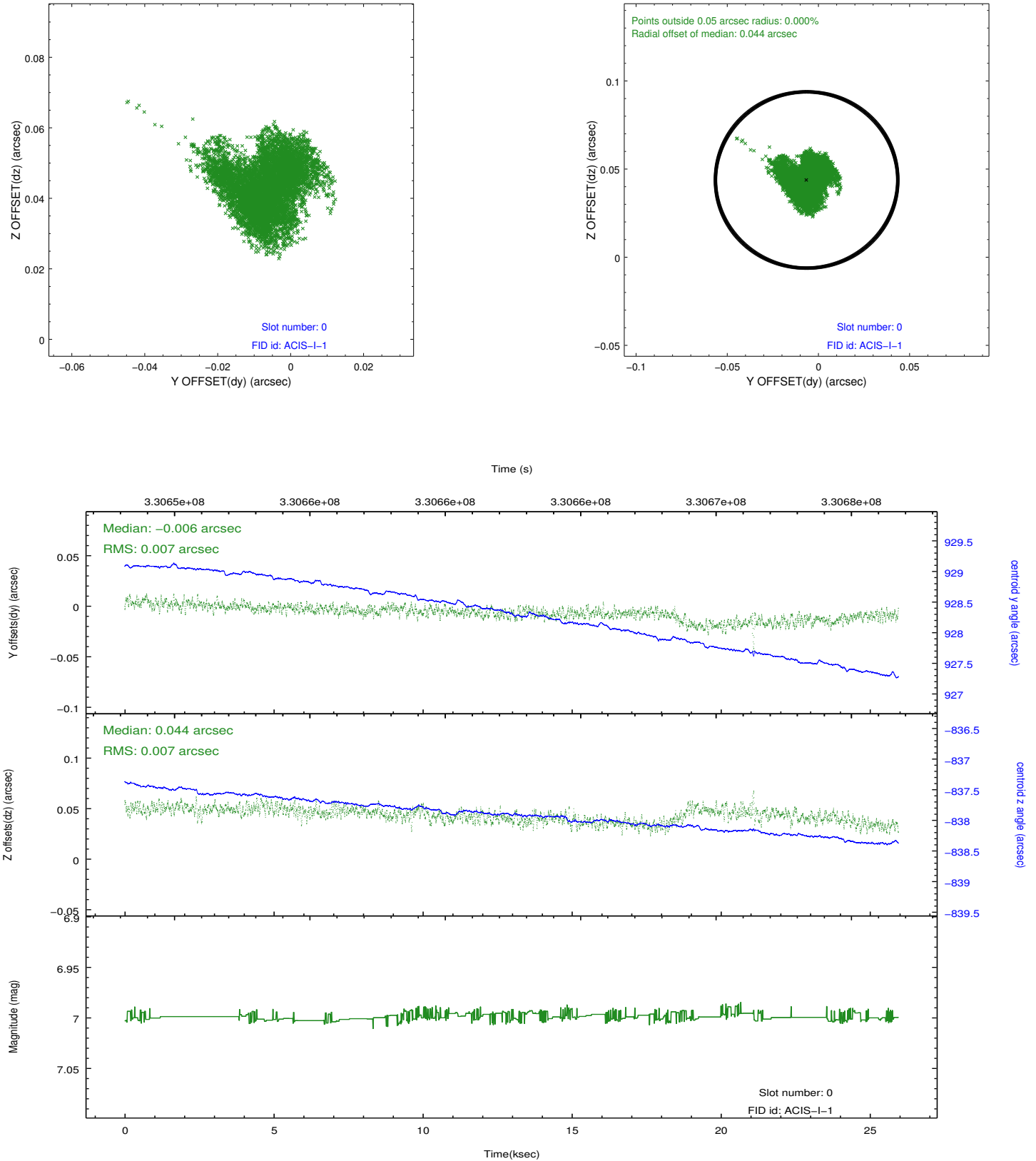


2.4.5 Slot 7

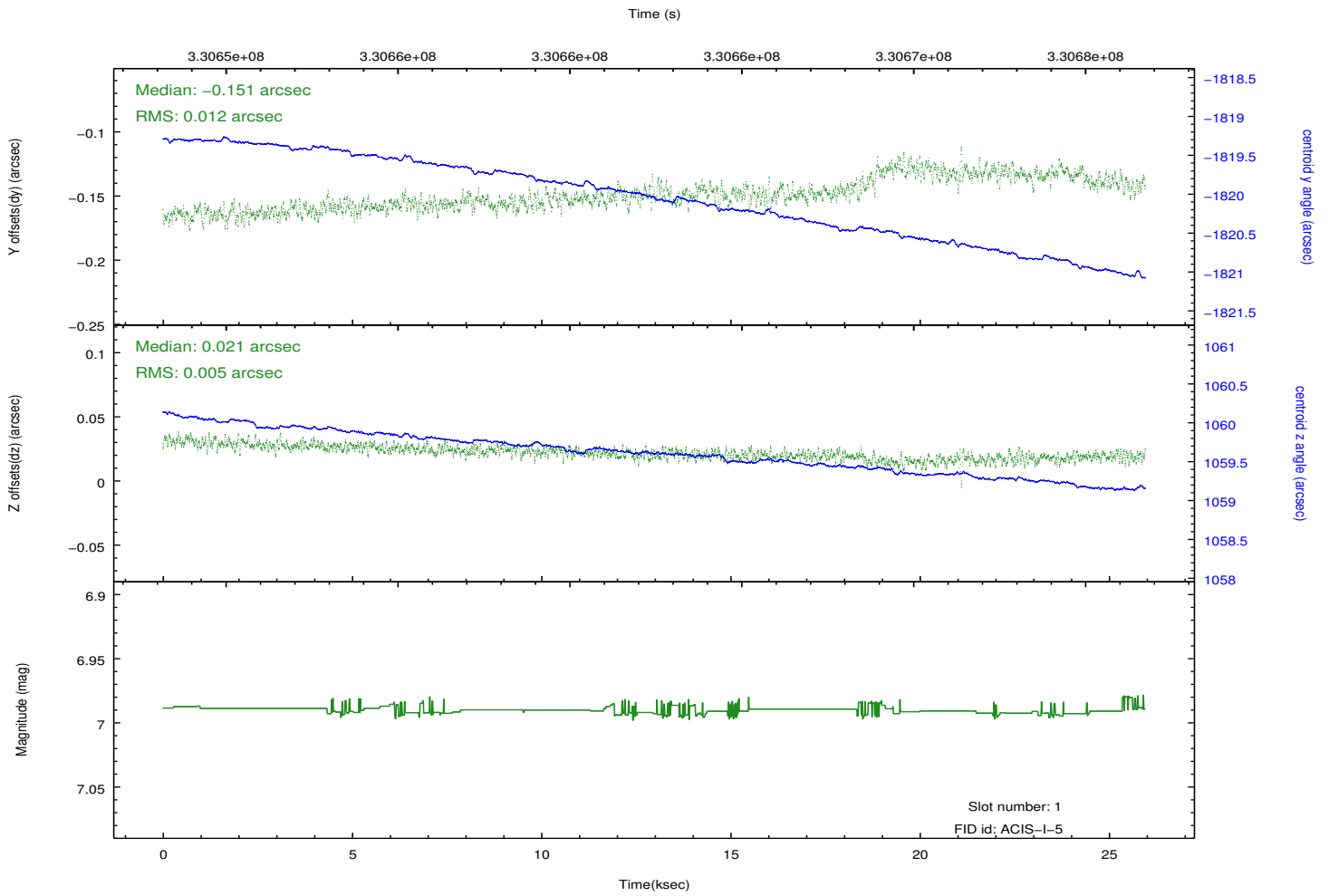
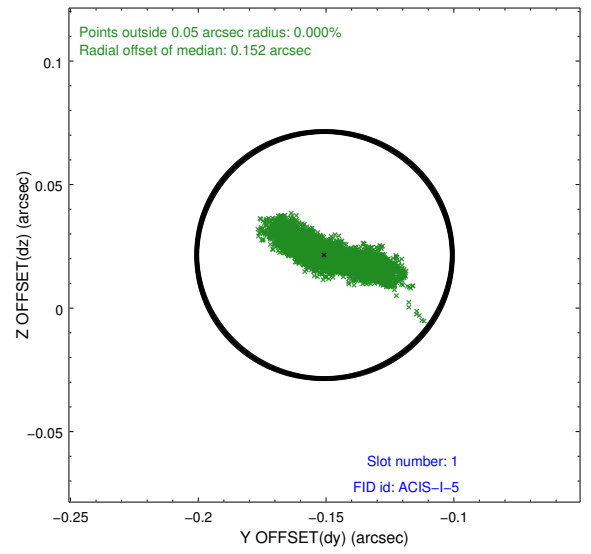
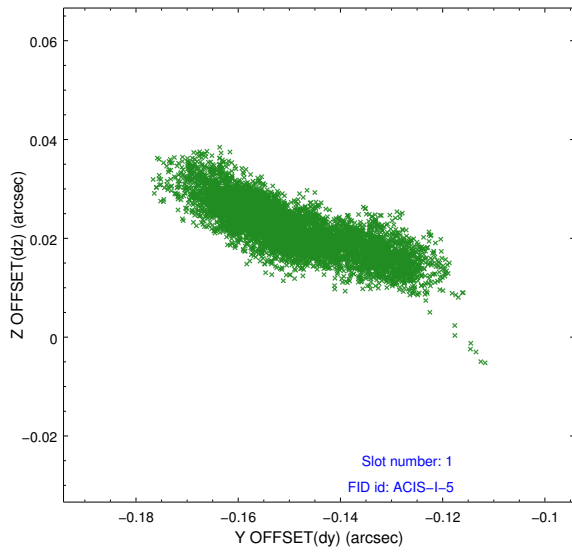


2.5 FID Slots

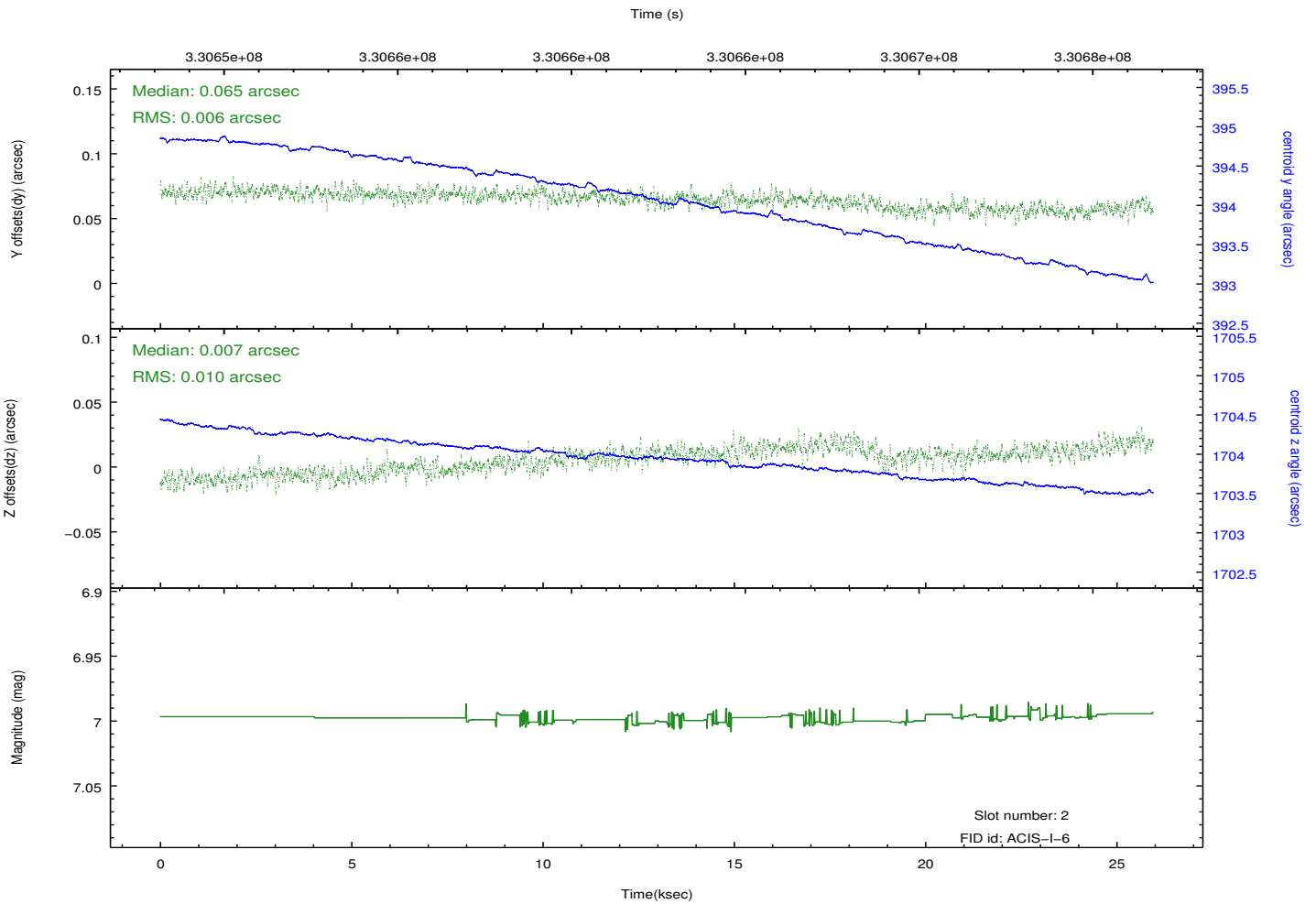
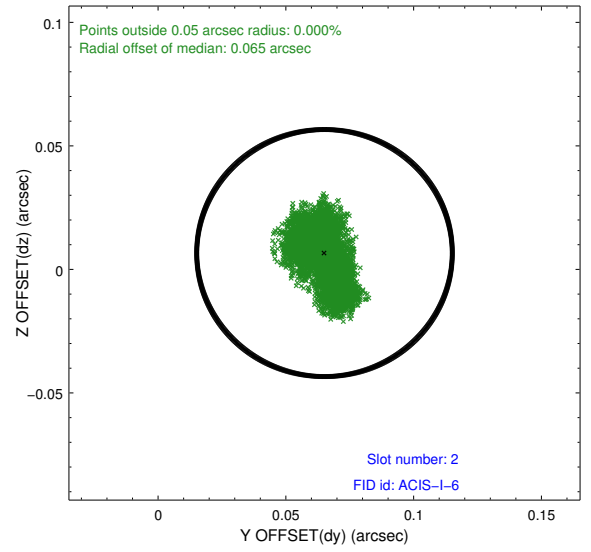
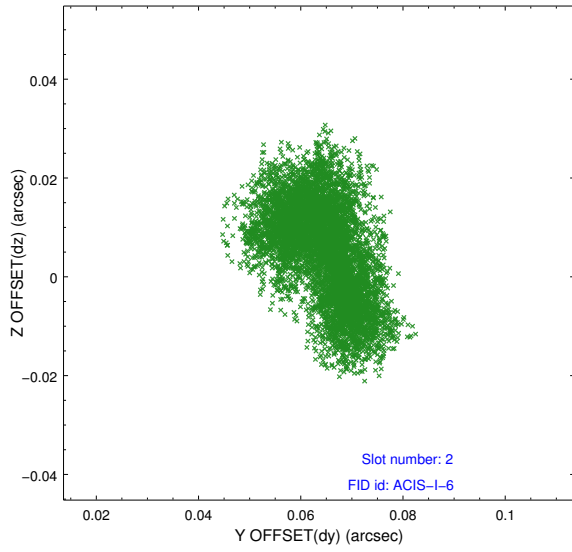
2.5.1 Slot 0



2.5.2 Slot 1



2.5.3 Slot 2



A Summary

A.1 Status

V&V Scientist	Jen Lauer
V&V Date (YYYY-MM-DD)	2012.05.30
V&V Edition	1
V&V Disposition and Status	OK
V&V Charge Time	25.5377182

A.2 Comments

Joint proposal: Spitzer. Roll constraint met.

=====

A spatial region of the original bias map for CCD = 0 suffered from anomalously high data values. Pixels in the event data that were bias-corrected by one of the original affected bias pixels may have an apparent energy shift. While the change in energy is expected to be small (~20 eV), it depends on many parameters that have not yet been fully explored for this bias anomaly. The bias map for CCD = 0 has been reconstructed for this processing to remove this anomaly using scaled data from a comparable bias map from another observation. The pixels affected by the anomaly are bounded by sky coords:
(214.81494,52.92952), (214.81847,52.92782), (214.84471,52.94764), (214.83977,52.94828)