

# V&V Reference Report

## L2 ASCDS Version : 8.4.4

Observation 9895 - L2 Version 2  
Chandra X-Ray Center

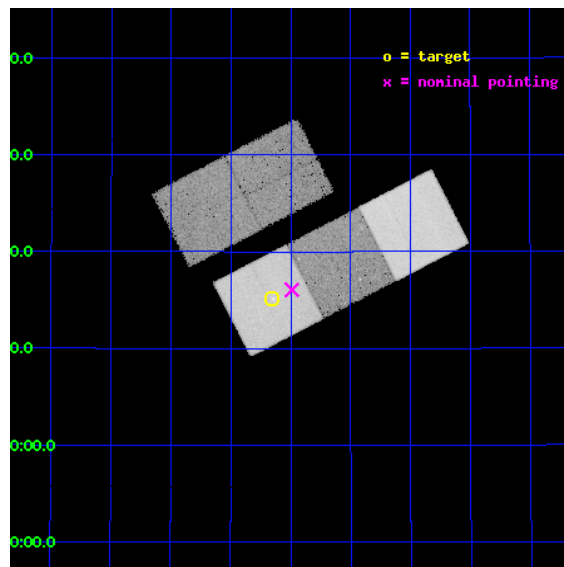
L2 Processing Date : Jun 3 2012

## Contents

<b>1</b>	<b>Front</b>	<b>2</b>
<b>2</b>	<b>OBI</b>	<b>3</b>
2.1	OBI . . . . .	3
2.1.1	Images . . . . .	3
2.1.2	Bias . . . . .	3
2.1.3	Parameters . . . . .	4
2.1.4	Events . . . . .	4
2.2	Compared Parameters . . . . .	5
2.3	Aspect . . . . .	6
2.4	Star Slots . . . . .	9
2.4.1	Slot 3 . . . . .	9
2.4.2	Slot 4 . . . . .	10
2.4.3	Slot 5 . . . . .	11
2.4.4	Slot 6 . . . . .	12
2.4.5	Slot 7 . . . . .	13
2.5	FID Slots . . . . .	14
2.5.1	Slot 0 . . . . .	14
2.5.2	Slot 1 . . . . .	15
2.5.3	Slot 2 . . . . .	16
<b>A</b>	<b>Summary</b>	<b>17</b>
A.1	Status . . . . .	17
A.2	Comments . . . . .	17

# 1 Front

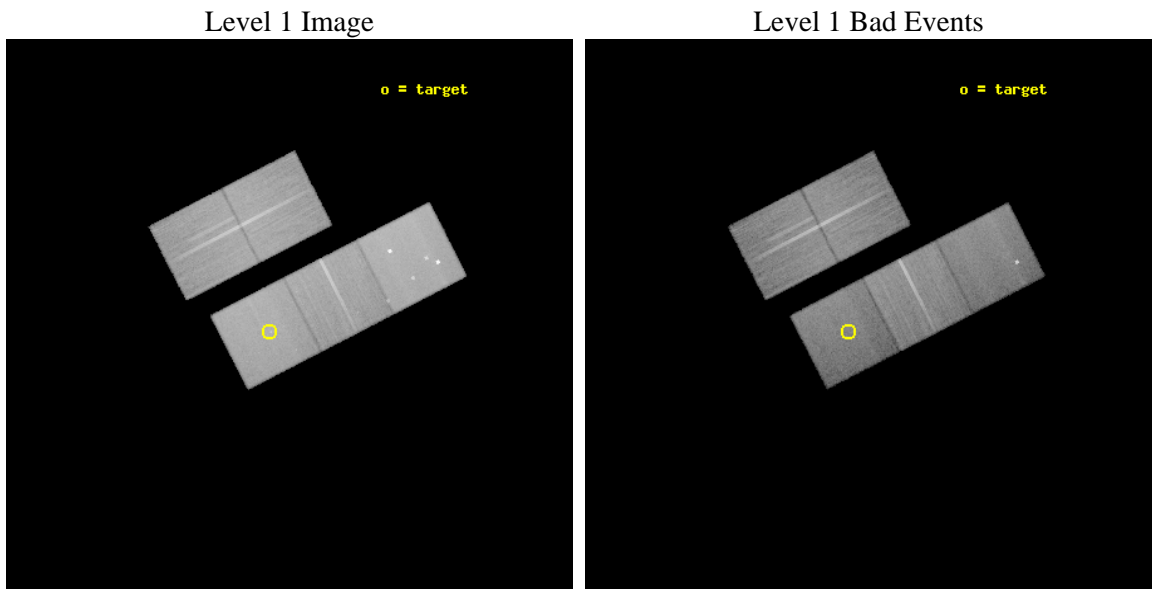
seq_num	900858	Sequence number
obs_id	9895	Observation id
title	Deep Follow-up of Intermediate Redshift Groups in the XBootes Survey	&#160
observer	Professor Gordon Garmire	Principal investigator
object	Bootes Group 33	Source name
dtcycle	0	&#160
cycle	P	events from which exps? Prim/Second/Both
ra_targ	216.78875	Observer's specified target RA [deg]
dec_targ	33.252806	Observer's specified target Dec [deg]
ra_nom	216.7475540981	Nominal RA [deg]
dec_nom	33.267736031725	Nominal Dec [deg]
roll_nom	152.82716171254	Nominal Roll [deg]
revision	2	Processing version of data
ontime	31034.100238681	Sum of GTIs [s]
livetime	30628.61687209	Livetime [s]
ontime2	31015.254276872	Sum of GTIs [s]
ontime3	31027.818248034	Sum of GTIs [s]
ontime5	31034.100238681	Sum of GTIs [s]
ontime6	31034.100238681	Sum of GTIs [s]
ontime7	31034.100238681	Sum of GTIs [s]
l2events	379992	Number of level 2 events



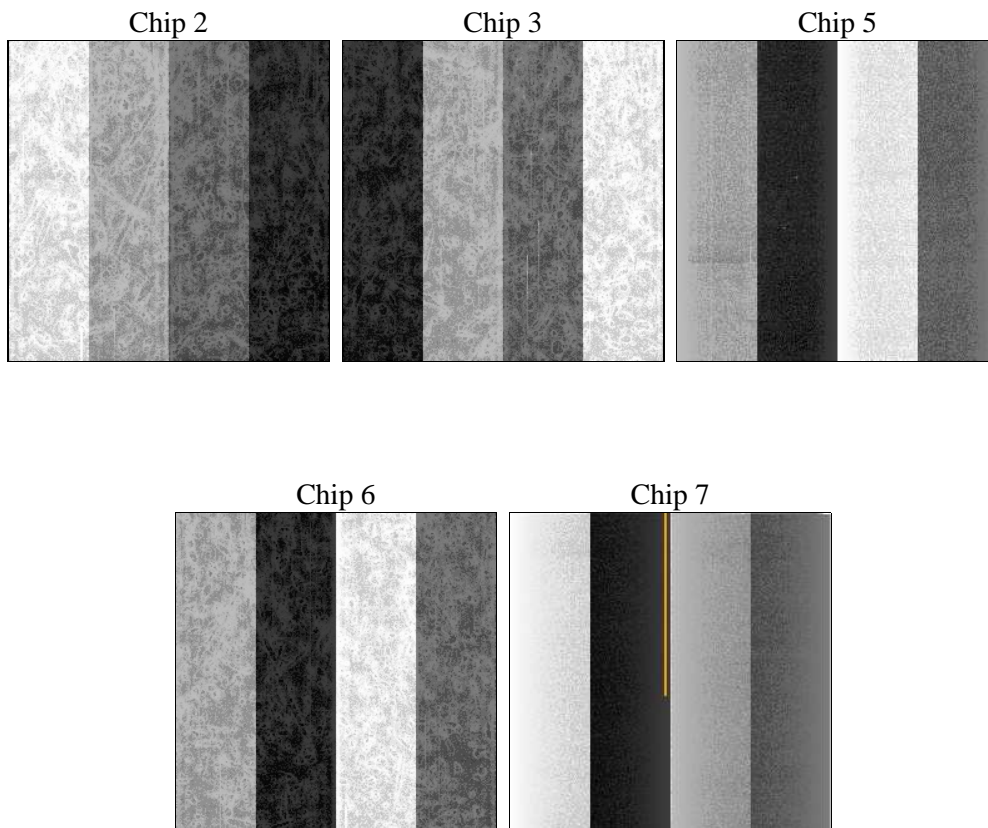
## 2 OBI

### 2.1 OBI

#### 2.1.1 Images



#### 2.1.2 Bias



### 2.1.3 Parameters

obi_num	0	Obi number	sched_exp_time	30858.000000	[s] Scheduled observation exposure time
ascdsver	8.4.4	Processing system revision	ontime	31034.100238681	Sum of GTIs [s]
caldbver	4.4.9	&#160	ontime2	31015.254276872	Sum of GTIs [s]
date	2012-06-03T23:36:40	Date and time of file creation	ontime3	31027.818248034	Sum of GTIs [s]
revision	2	Processing version of data	ontime5	31034.100238681	Sum of GTIs [s]
			ontime6	31034.100238681	Sum of GTIs [s]
			ontime7	31034.100238681	Sum of GTIs [s]
			l1events	1506463	Number of level 1 events

### 2.1.4 Events

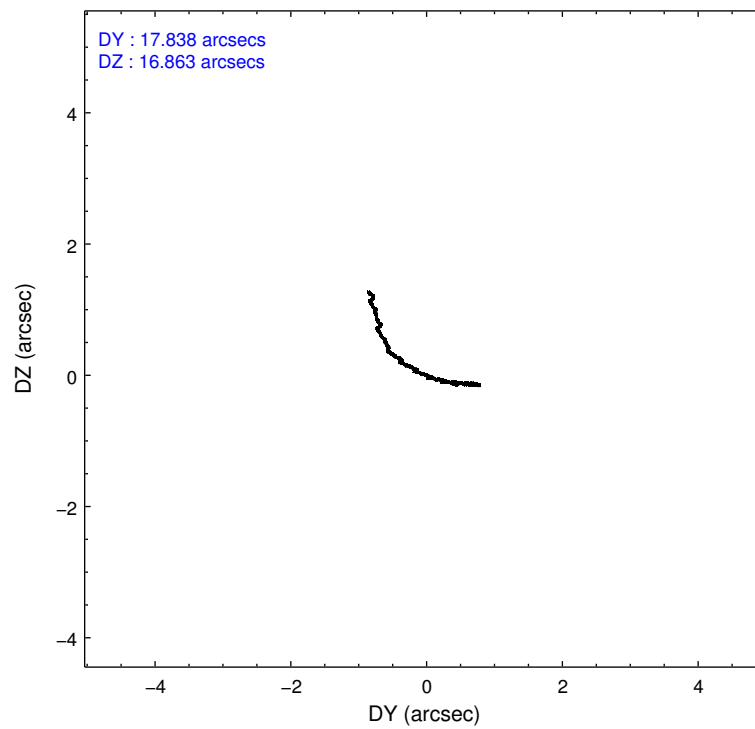
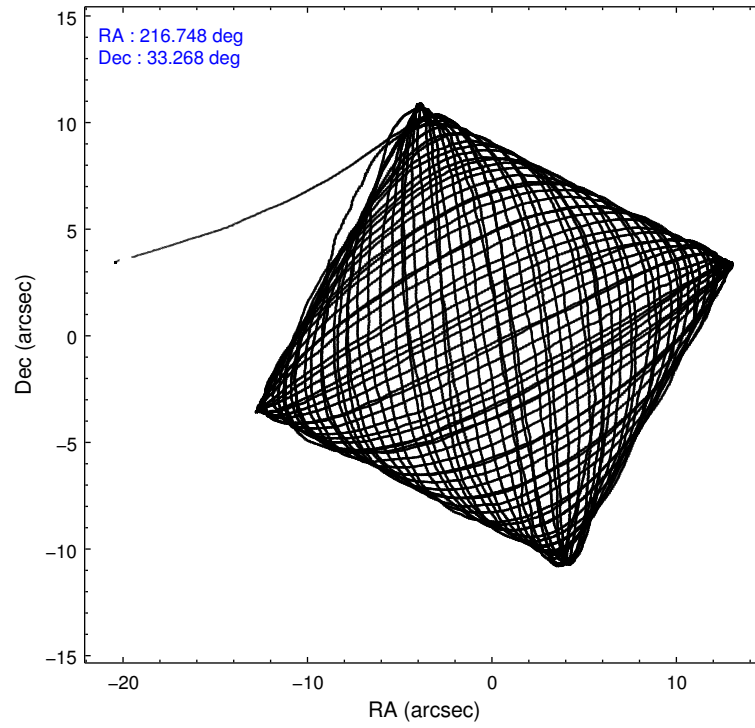
	ccd 2	ccd 3	ccd 5	ccd 6	ccd 7
level 1 events	275437	260002	390052	275778	305194
rejected events	249086	235220	192270	247150	165510
rejected %	90%	90%	49%	89%	54%

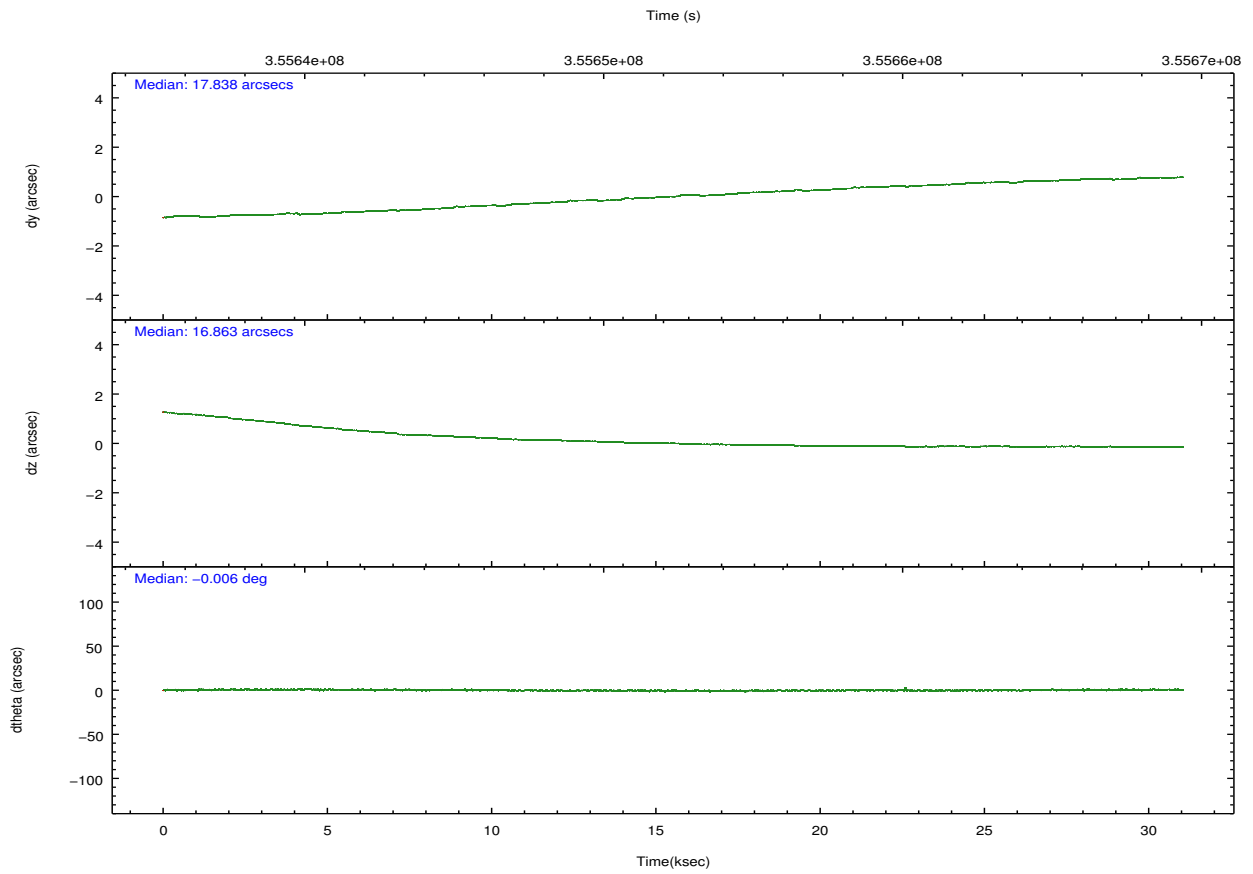
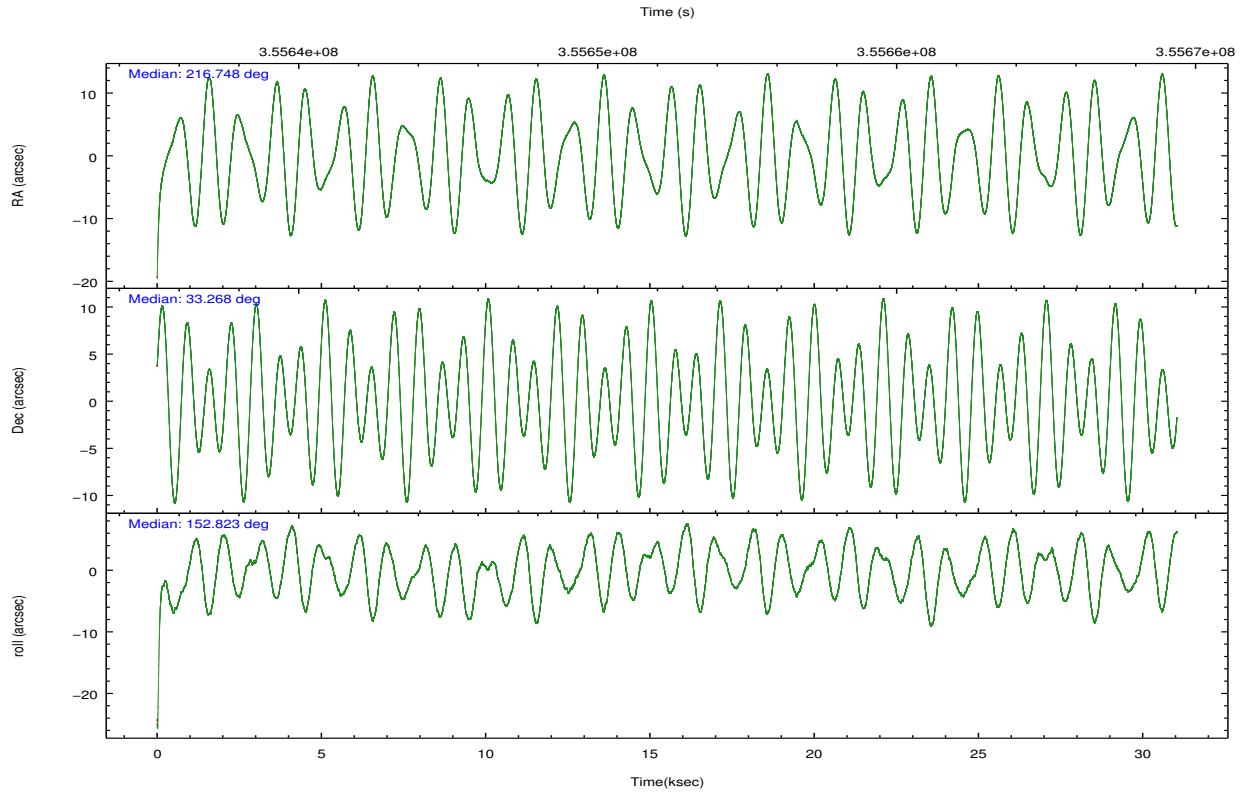
	ccd 2	ccd 3	ccd 5	ccd 6	ccd 7
grade 0 events	9530	8716	26524	10357	13831
	3%	3%	6%	3%	4%
grade 1 events	133	151	686	148	385
	0%	0%	0%	0%	0%
grade 2 events	6322	5447	59048	6407	28848
	2%	2%	15%	2%	9%
grade 3 events	2872	2899	7879	3077	12939
	1%	1%	2%	1%	4%
grade 4 events	2874	2806	7328	3013	12560
	1%	1%	1%	1%	4%
grade 5 events	9231	10778	29339	10917	31934
	3%	4%	7%	3%	10%
grade 6 events	4898	5046	98166	5948	72321
	1%	1%	25%	2%	23%
grade 7 events	239577	224159	161082	235911	132376
	86%	86%	41%	85%	43%

## 2.2 Compared Parameters

Parameter	Planned	Actual	Parameter	Planned	Actual
Instrument	ACIS	ACIS	Obspar format version number	7	7
Detector	ACIS-23567	ACIS-23567	Obspar file type	PREDICTED	ACTUAL
Grating	NONE	NONE	Obspar update status	NONE	UPDATED
Data mode	VFAINT	VFAINT	CCD I0 on	N	N
Observation mode	POINTING	POINTING	CCD I1 on	N	N
[deg] Pointing RA	216.780193	216.7475540981015	CCD I2 on	O1	Y
[deg] Pointing Dec	33.269451	33.2677360317246	CCD I3 on	O2	Y
[deg] Pointing Roll	152.652646	152.8271617125353	CCD S0 on	N	N
[mm] SIM focus pos	-0.684267	-0.6828225247311905	CCD S1 on	Y	Y
[mm] SIM defocus	0	0.001444936568705701	CCD S2 on	Y	Y
[mm] SIM translation stage pos	-190.132523	-190.1425803651734	CCD S3 on	Y	Y
[mm] SIM translation stage offset	0	0.01005778216563158	CCD S4 on	N	N
[s] Observation start time (MET)	355636985.184000	355635896.61835	CCD S5 on	N	N
Observation start date	2009-04-09T04:01:59	2009-04-09T03:44:56	Number of optional ACIS chips dropped	0	0
[s] Observation end time (MET)	355667843.184000	355668427.04497	On-chip summing requested	N	N
Observation end date	2009-04-09T12:36:17	2009-04-09T12:47:07	Subarray requested	NONE	NONE
Read mode	TIMED	TIMED	Alternating exposures requested	N	N
			[s] Primary exposure time	0.000000	3.1

## 2.3 Aspect



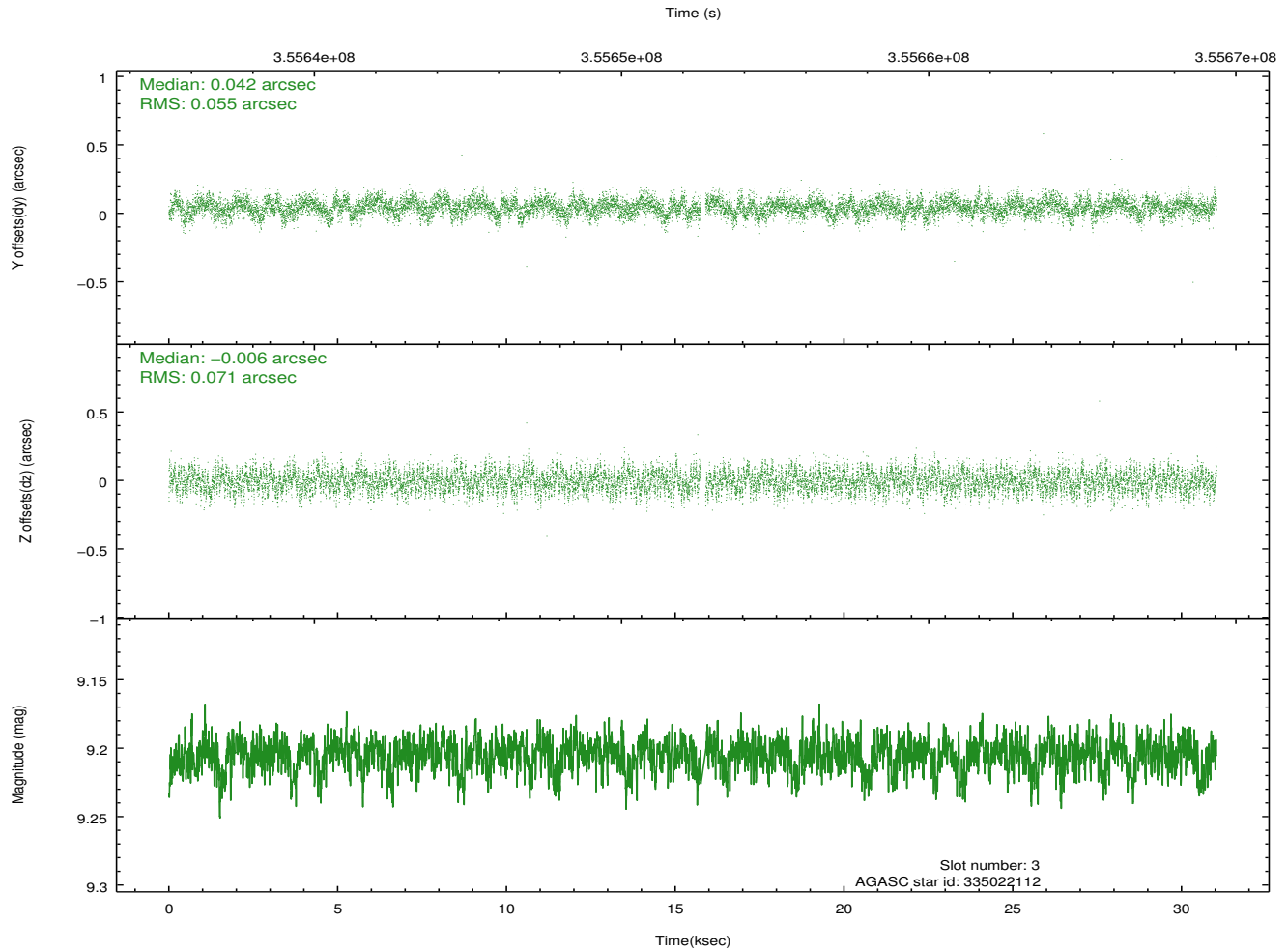
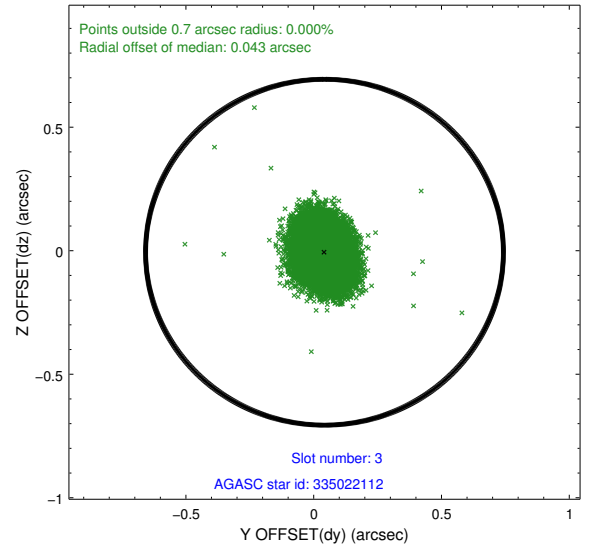
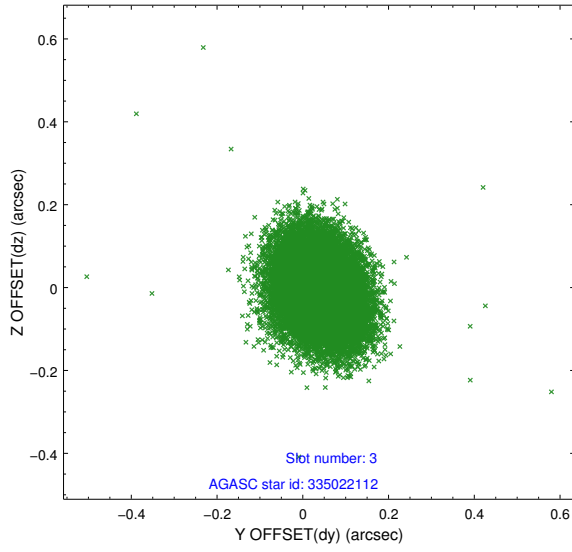


### Slot Statistics

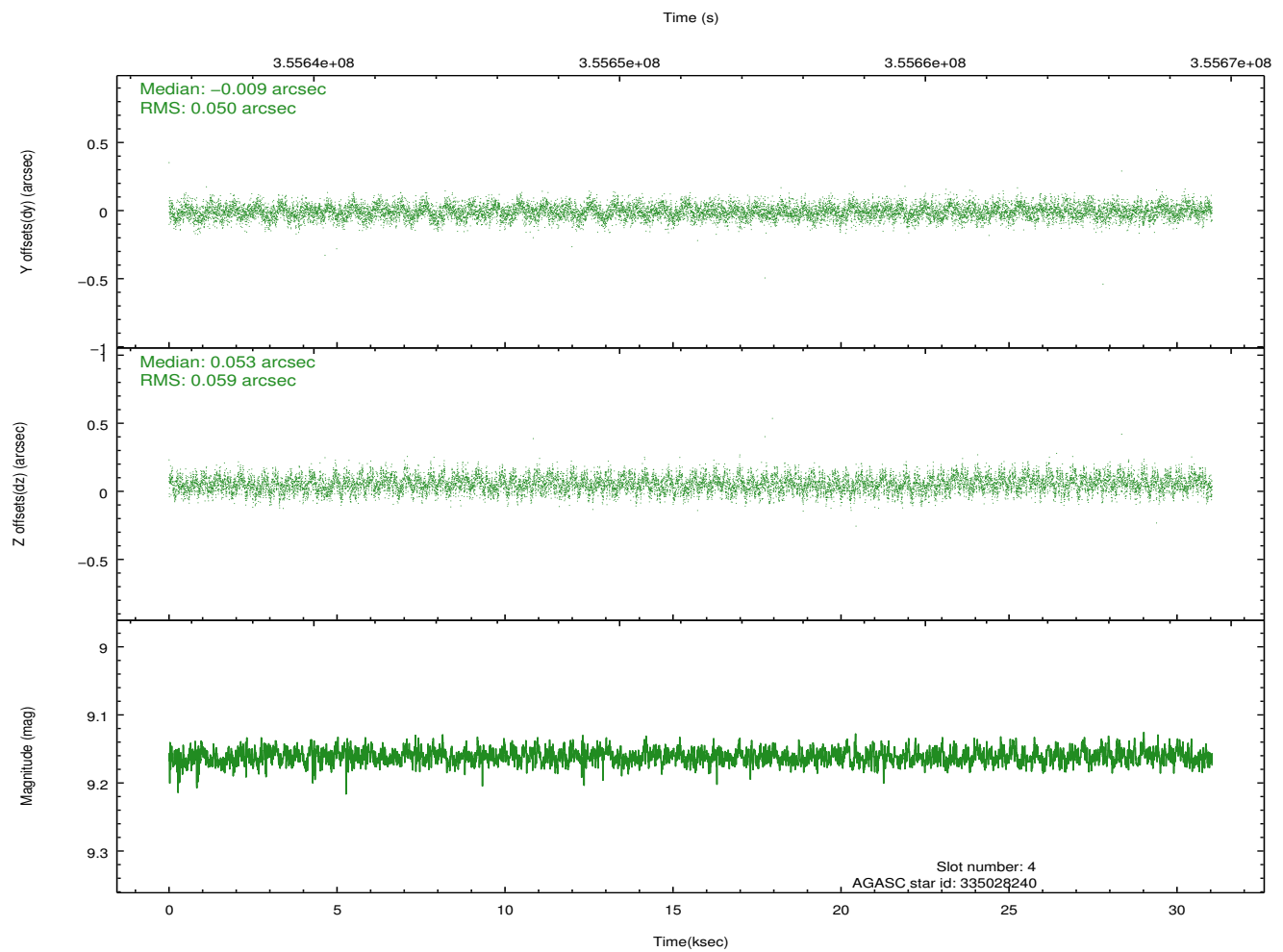
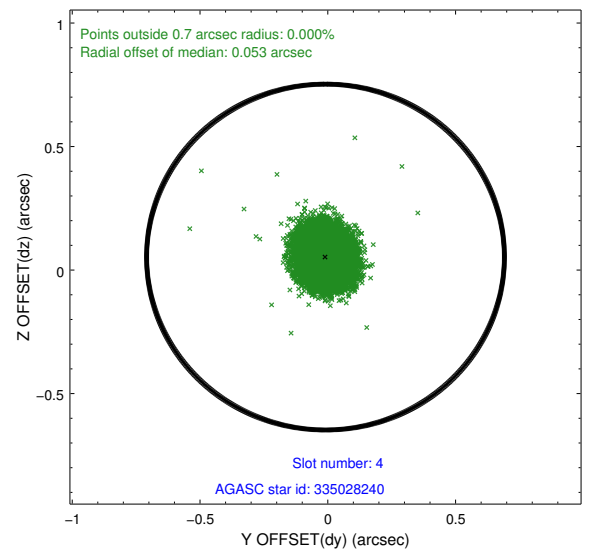
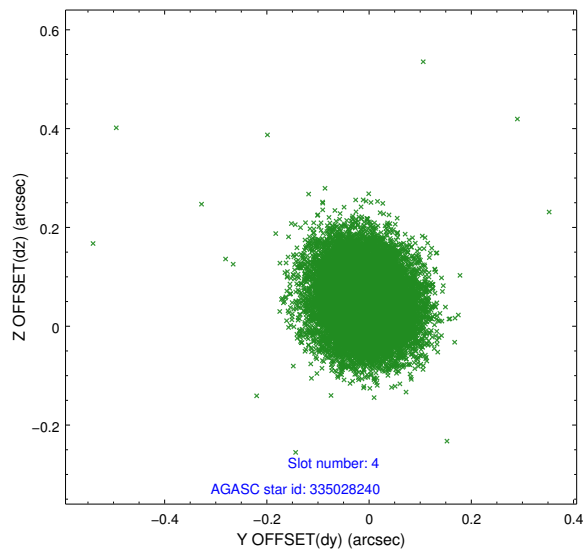
slot	status	id	mag	n_pts	med_dy	med_dz	dr1	dr2	ra	dec	mean_y	mean_z
0	FID	ACIS-S-1	7.00	7572	0.109	-0.096	0.015	0.031	0.000000	0.000000	925.28	-1734.15
1	FID	ACIS-S-5	7.04	7571	-0.146	0.074	0.023	0.032	0.000000	0.000000	-1823.93	163.50
2	FID	ACIS-S-6	7.13	7572	0.012	0.040	0.030	0.053	0.000000	0.000000	390.67	807.50
3	GUIDE	335022112	9.21	15069	0.042	-0.006	0.096	0.154	216.659296	32.794758	-460.15	1686.21
4	GUIDE	335028240	9.16	15127	-0.009	0.053	0.083	0.131	216.746851	33.385009	280.95	-323.20
5	GUIDE	335029808	9.07	15127	0.017	-0.048	0.078	0.129	216.789548	33.180488	-171.78	271.53
6	GUIDE	335030152	9.69	15120	-0.120	-0.047	0.106	0.170	216.202154	33.091054	1255.74	1367.26
7	GUIDE	334106080	9.13	15134	0.070	0.048	0.086	0.139	215.767785	32.987168	2255.68	2294.59

## 2.4 Star Slots

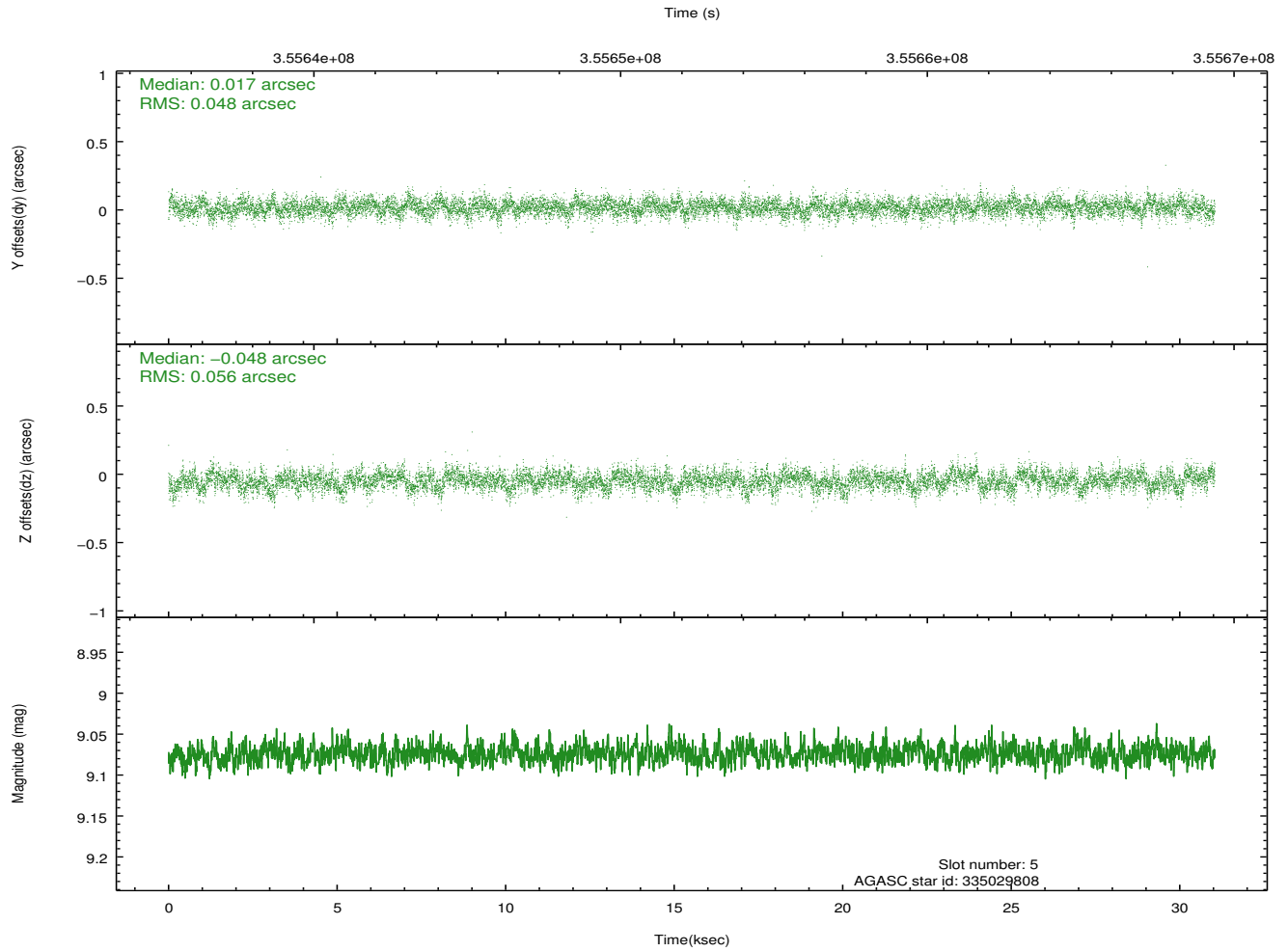
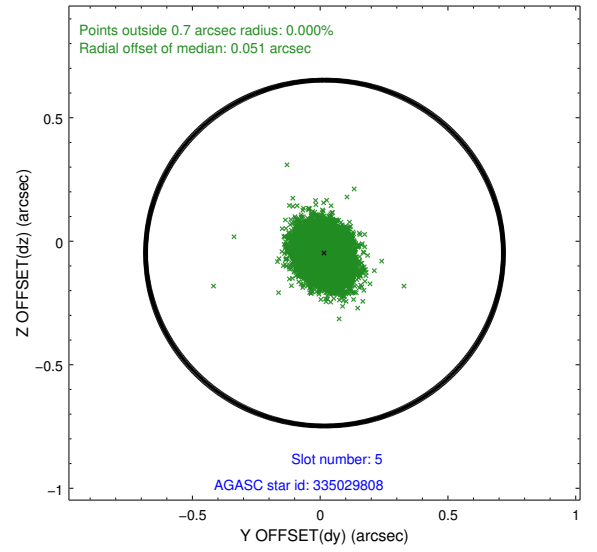
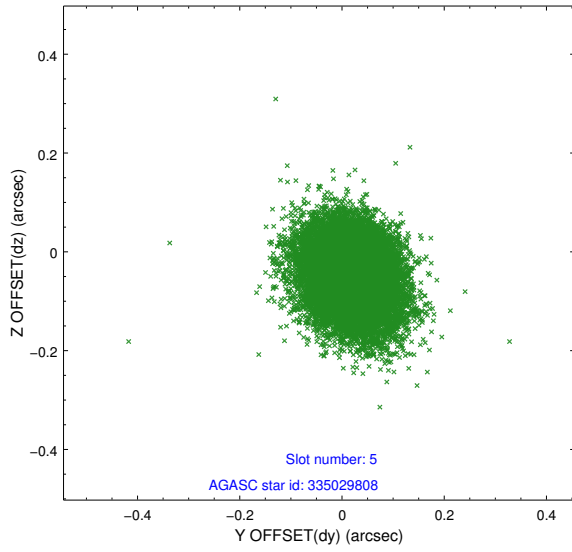
### 2.4.1 Slot 3



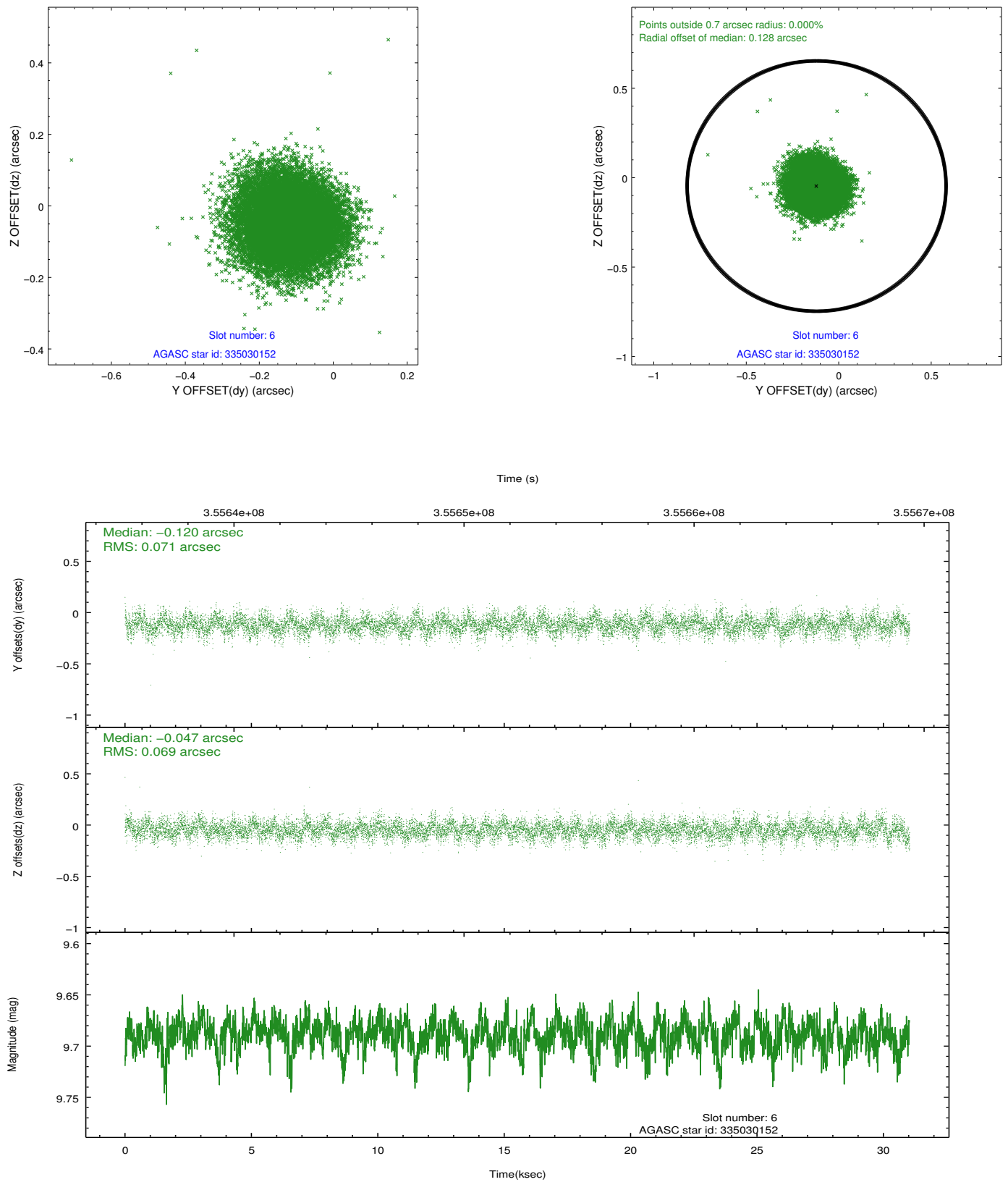
## 2.4.2 Slot 4



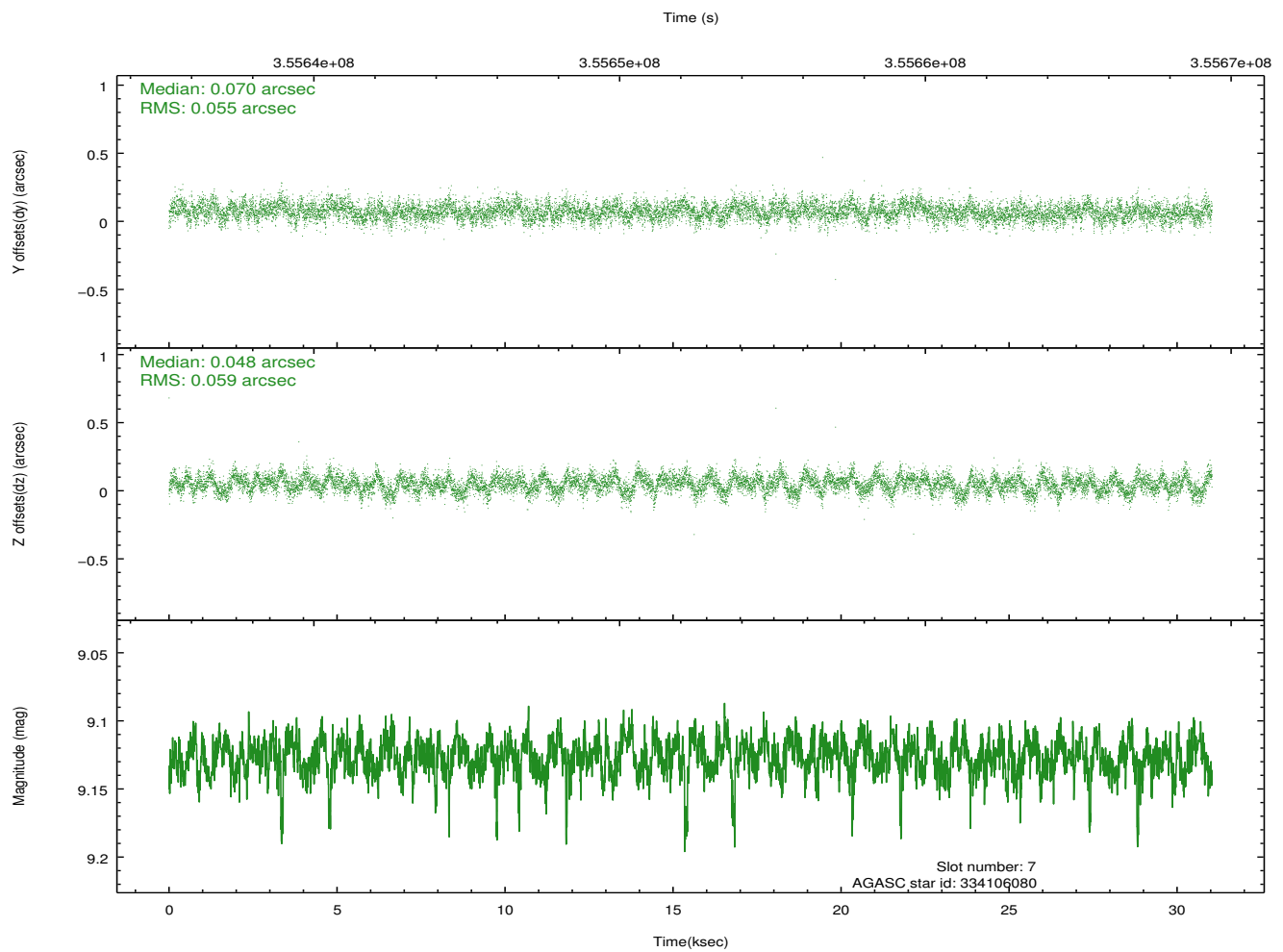
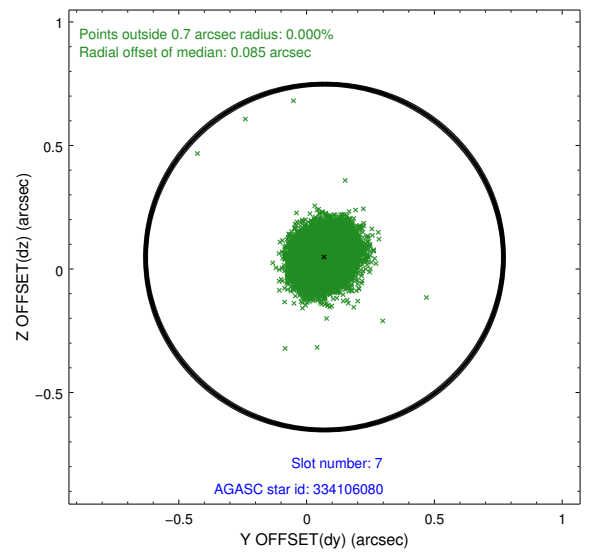
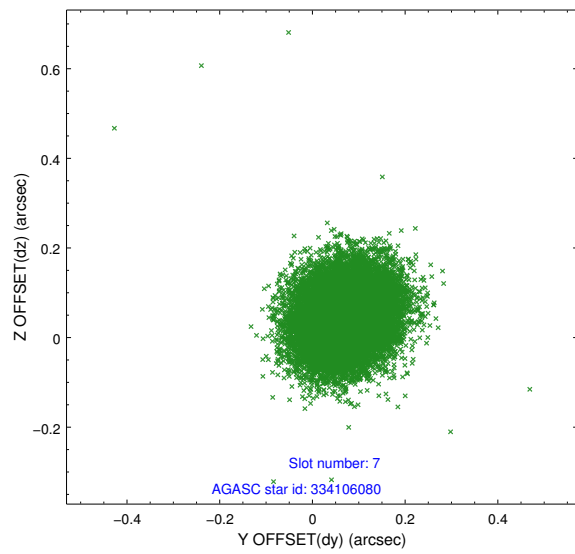
### 2.4.3 Slot 5



## 2.4.4 Slot 6

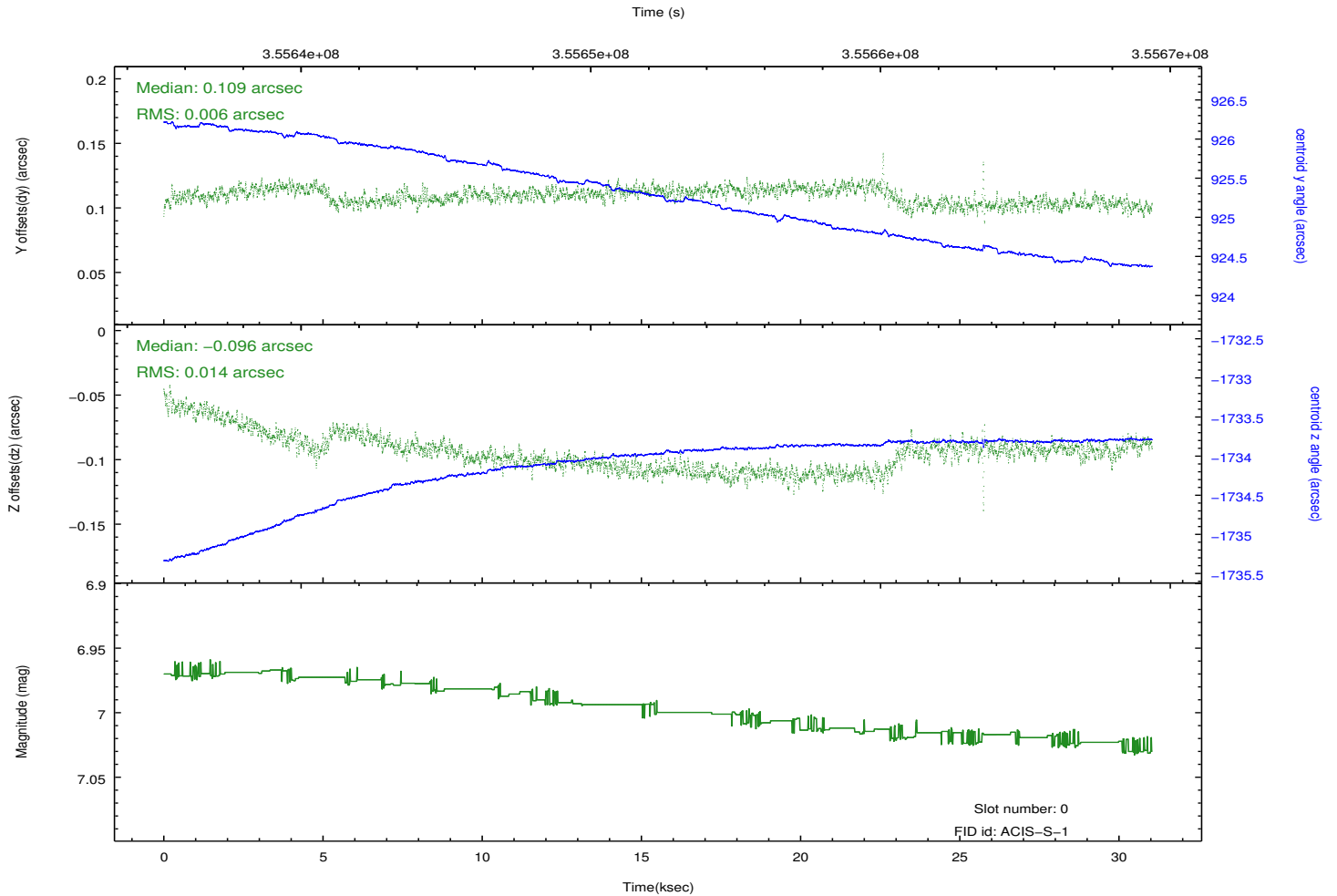
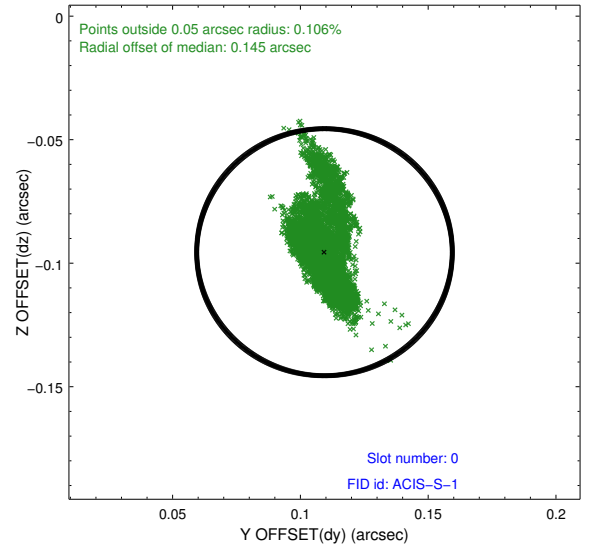
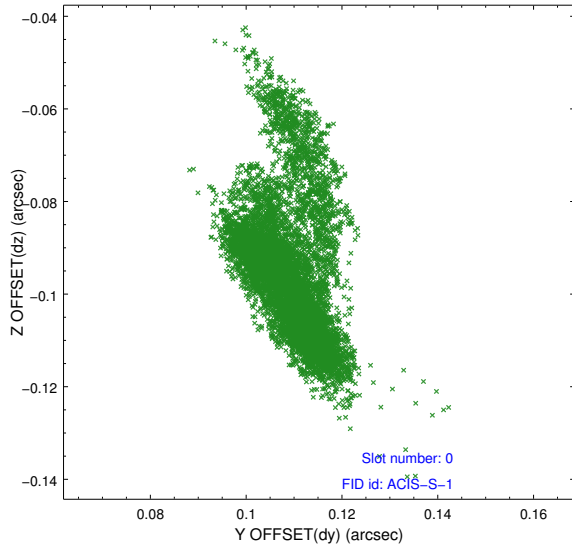


## 2.4.5 Slot 7

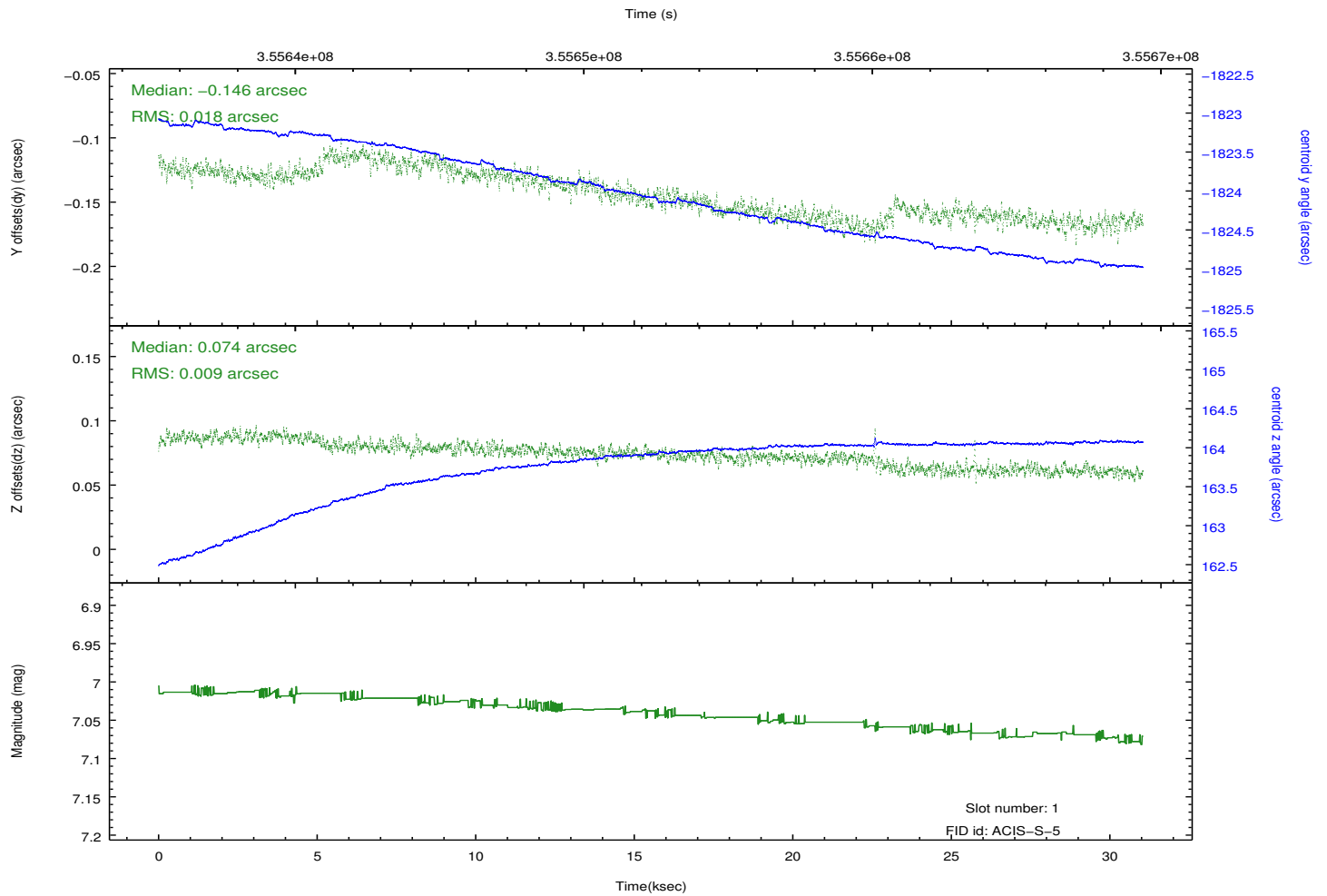
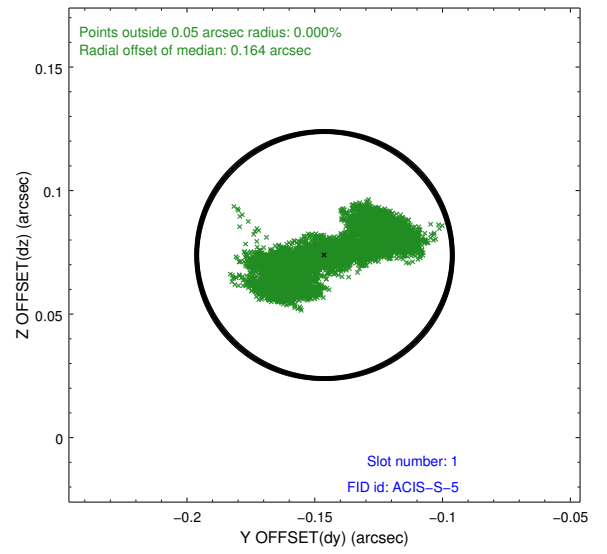
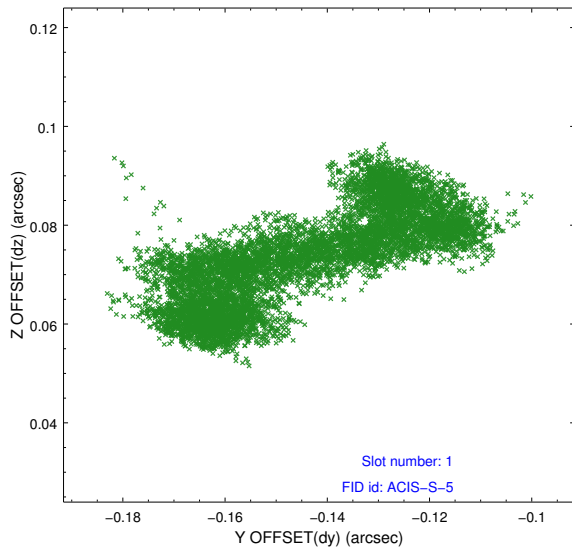


## 2.5 FID Slots

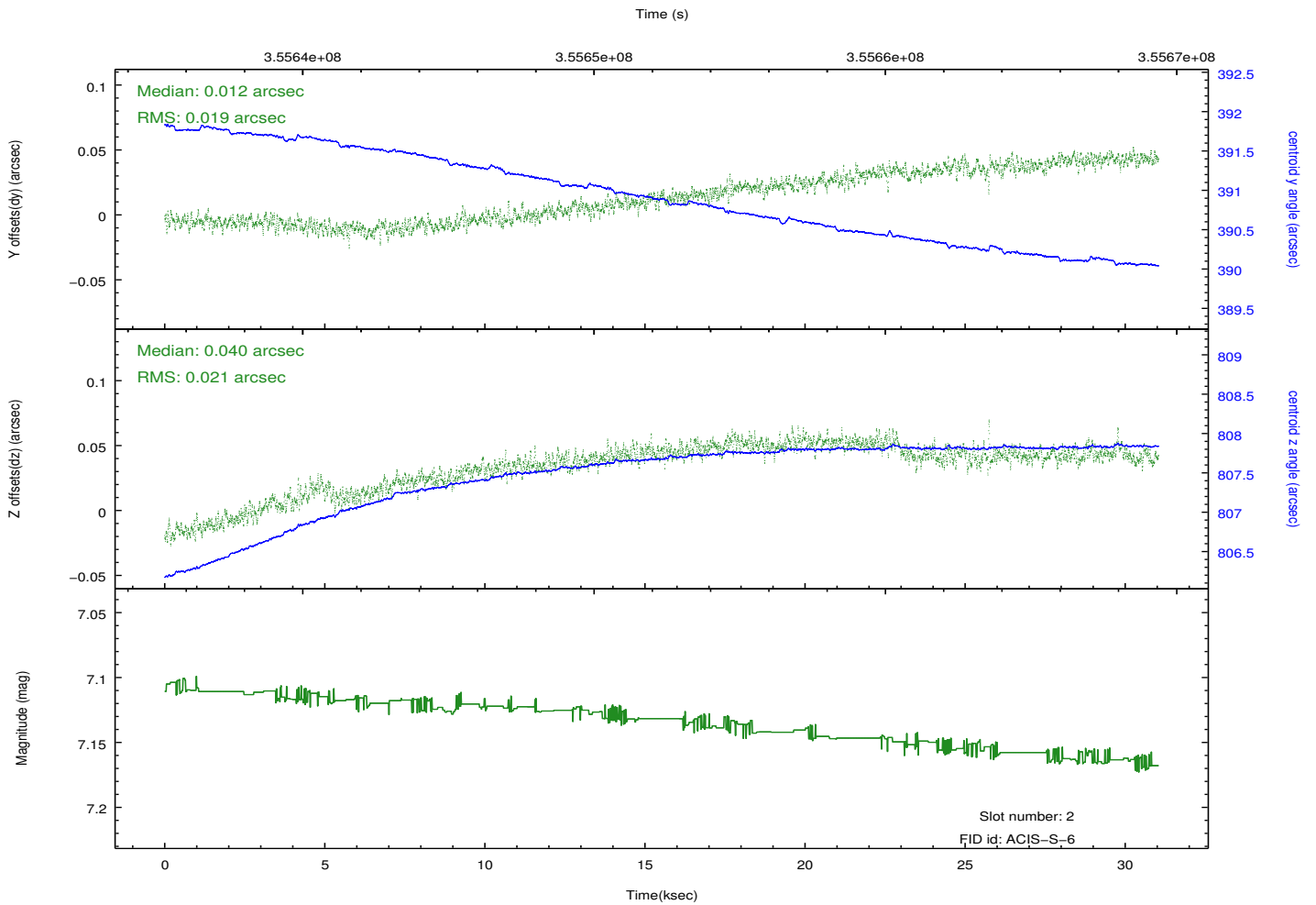
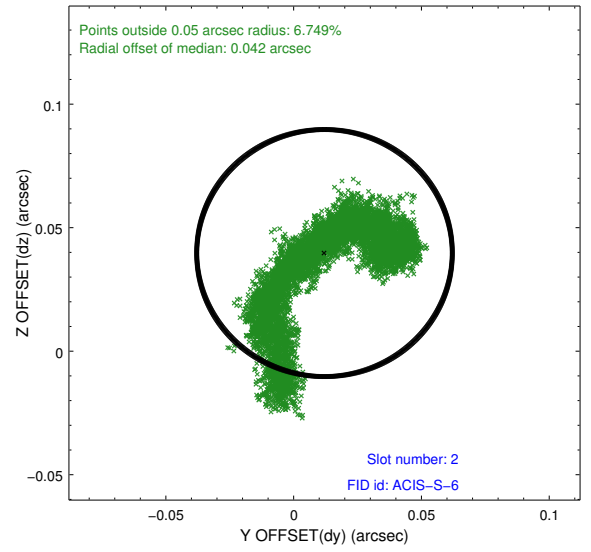
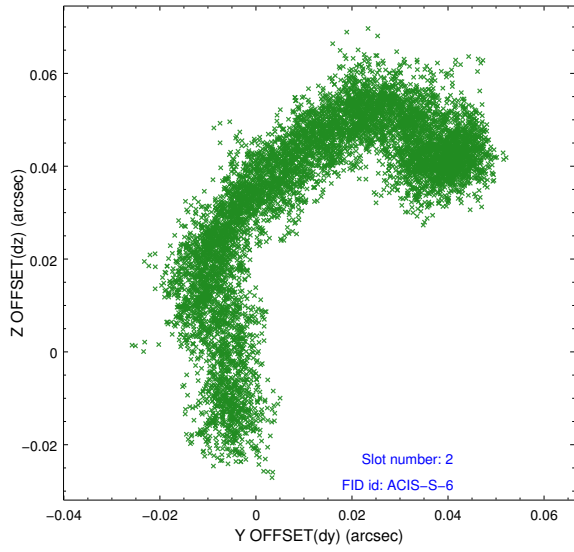
### 2.5.1 Slot 0



## 2.5.2 Slot 1



### 2.5.3 Slot 2



# A Summary

## A.1 Status

V&V Scientist	Jen Lauer
V&V Date (YYYY-MM-DD)	2012.06.07
V&V Edition	1
V&V Disposition and Status	OK
V&V Charge Time	31.0341002

## A.2 Comments