

V&V Reference Report

L2 ASCDS Version : 8.4.5

Observation 9975 - L2 Version 2
Chandra X-Ray Center

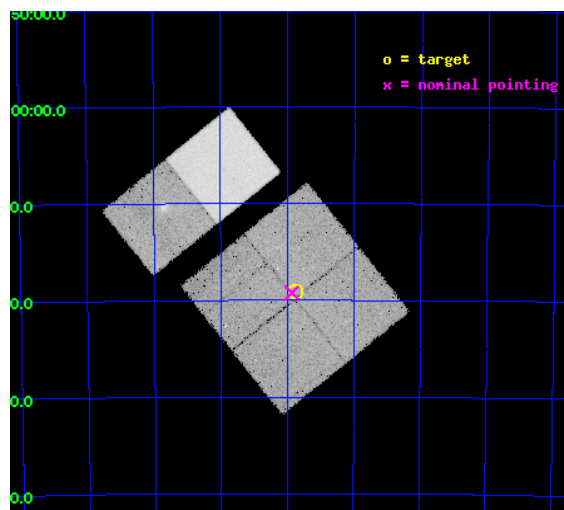
L2 Processing Date : Jun 8 2012

Contents

1	Front	2
2	OBI	3
2.1	OBI	3
2.1.1	Images	3
2.1.2	Bias	3
2.1.3	Parameters	4
2.1.4	Events	4
2.2	Compared Parameters	5
2.3	Aspect	6
2.4	Star Slots	9
2.4.1	Slot 3	9
2.4.2	Slot 4	10
2.4.3	Slot 5	11
2.4.4	Slot 6	12
2.4.5	Slot 7	13
2.5	FID Slots	14
2.5.1	Slot 0	14
2.5.2	Slot 1	15
2.5.3	Slot 2	16
A	Summary	17
A.1	Status	17
A.2	Comments	17

1 Front

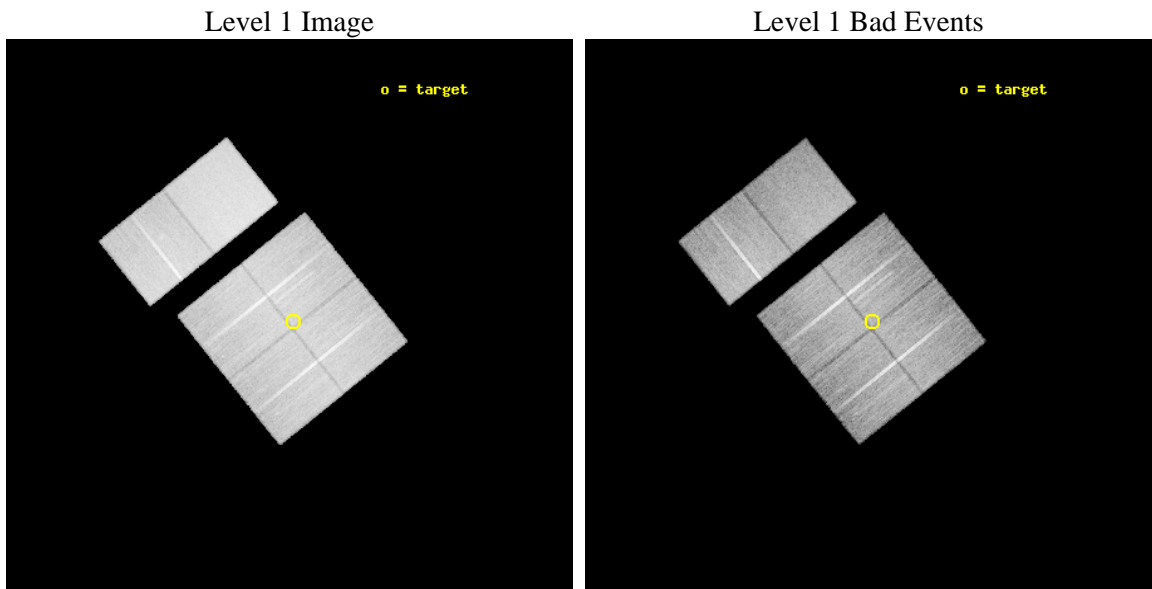
seq_num	400939	Sequence number
obs_id	9975	Observation id
title	The brightest unidentified Galactic sources of the new H.E.S.S. survey	Proposal title
observer	Dr Omar Tibolla	Principal investigator
object	HESS J1507-622	Source name
dtcycle	0	
cycle	P	events from which exps? Prim/Second/Both
ra_targ	226.717	Observer's specified target RA [deg]
dec_targ	-62.3175	Observer's specified target Dec [deg]
ra_nom	226.73321639863	Nominal RA [deg]
dec_nom	-62.320448267359	Nominal Dec [deg]
roll_nom	321.25301050562	Nominal Roll [deg]
revision	2	Processing version of data
ontime	19948.799925745	Sum of GTIs [s]
livetime	19696.19620936	Livetime [s]
ontime0	19948.799925745	Sum of GTIs [s]
ontime1	19948.799925745	Sum of GTIs [s]
ontime2	19948.799925745	Sum of GTIs [s]
ontime3	19948.799925745	Sum of GTIs [s]
ontime6	19948.799925745	Sum of GTIs [s]
ontime7	19948.799925745	Sum of GTIs [s]
l2events	236086	Number of level 2 events



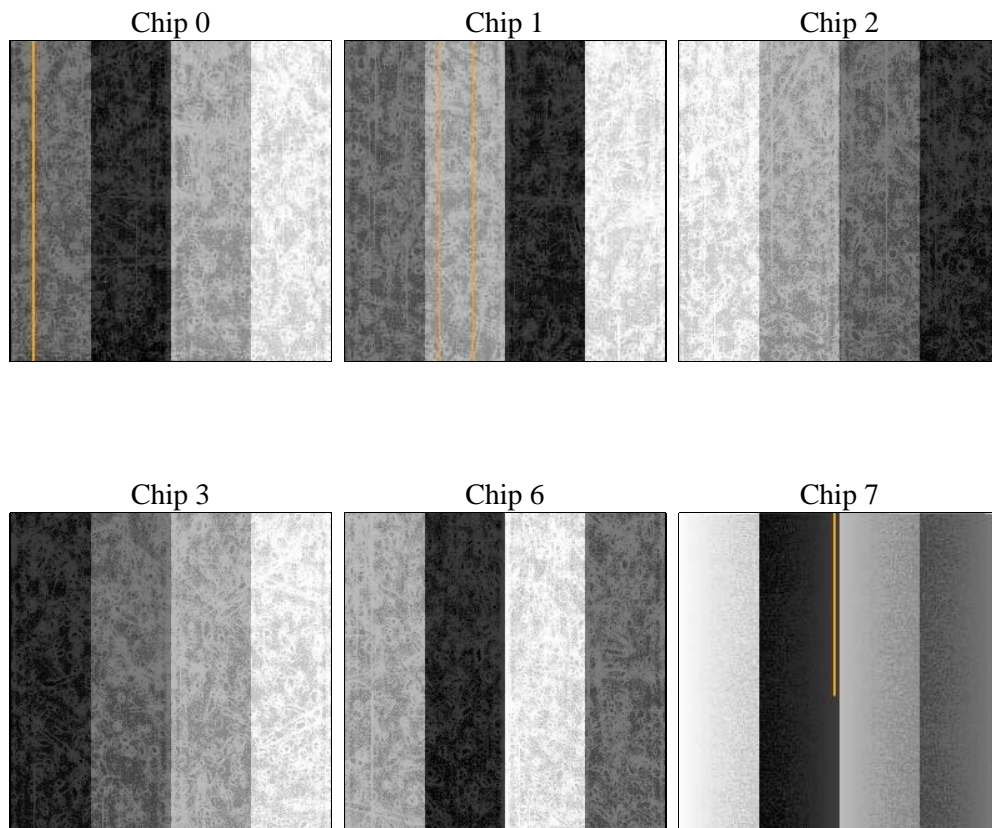
2 OBI

2.1 OBI

2.1.1 Images



2.1.2 Bias



2.1.3 Parameters

obi_num	0	Obi number	sched_exp_time	20000.000000	[s] Scheduled observation exposure time
ascdsver	8.4.5	Processing system revision	ontime	19948.799925745	Sum of GTIs [s]
caldbver	4.4.10	 	ontime0	19948.799925745	Sum of GTIs [s]
date	2012-06-08T08:32:28	Date and time of file creation	ontime1	19948.799925745	Sum of GTIs [s]
revision	2	Processing version of data	ontime2	19948.799925745	Sum of GTIs [s]
			ontime3	19948.799925745	Sum of GTIs [s]
			ontime6	19948.799925745	Sum of GTIs [s]
			ontime7	19948.799925745	Sum of GTIs [s]
			l1events	1316929	Number of level 1 events

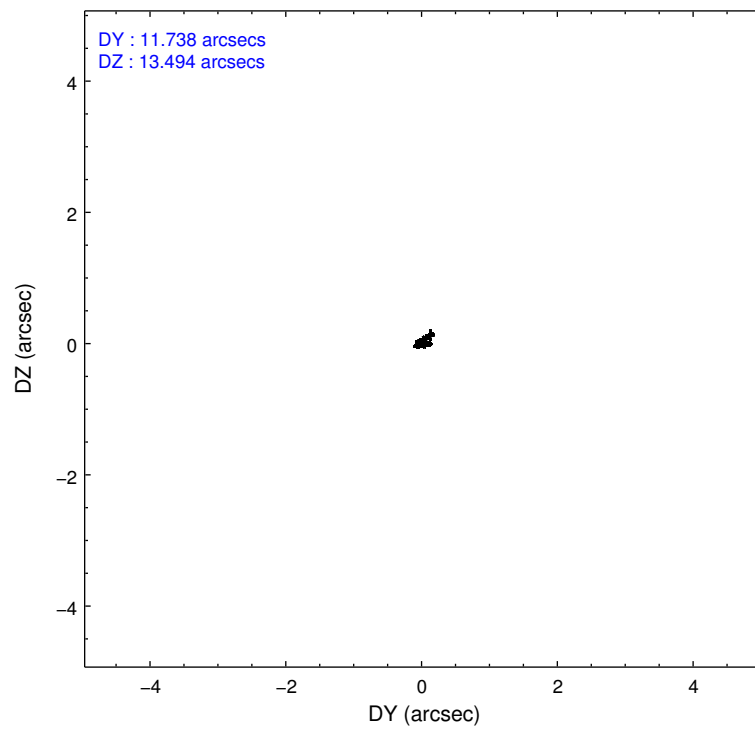
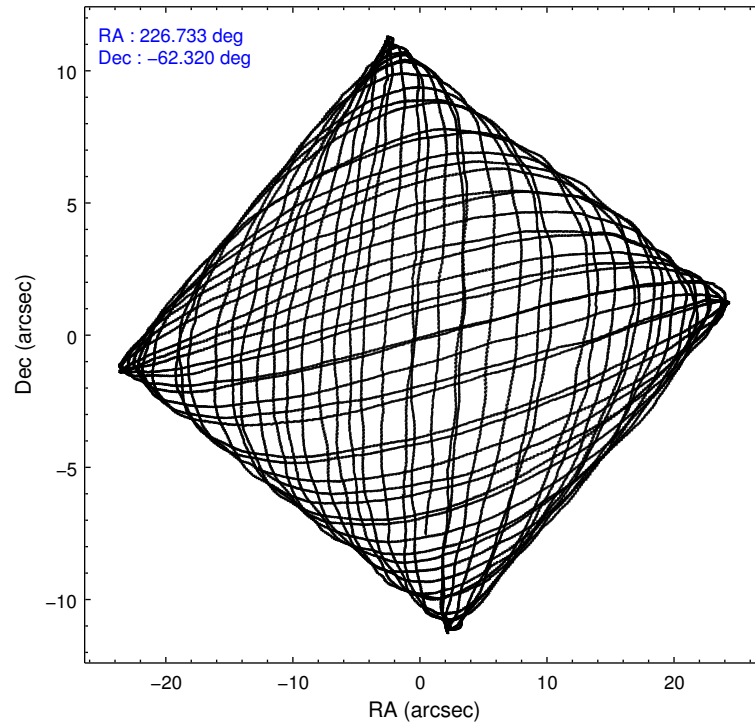
2.1.4 Events

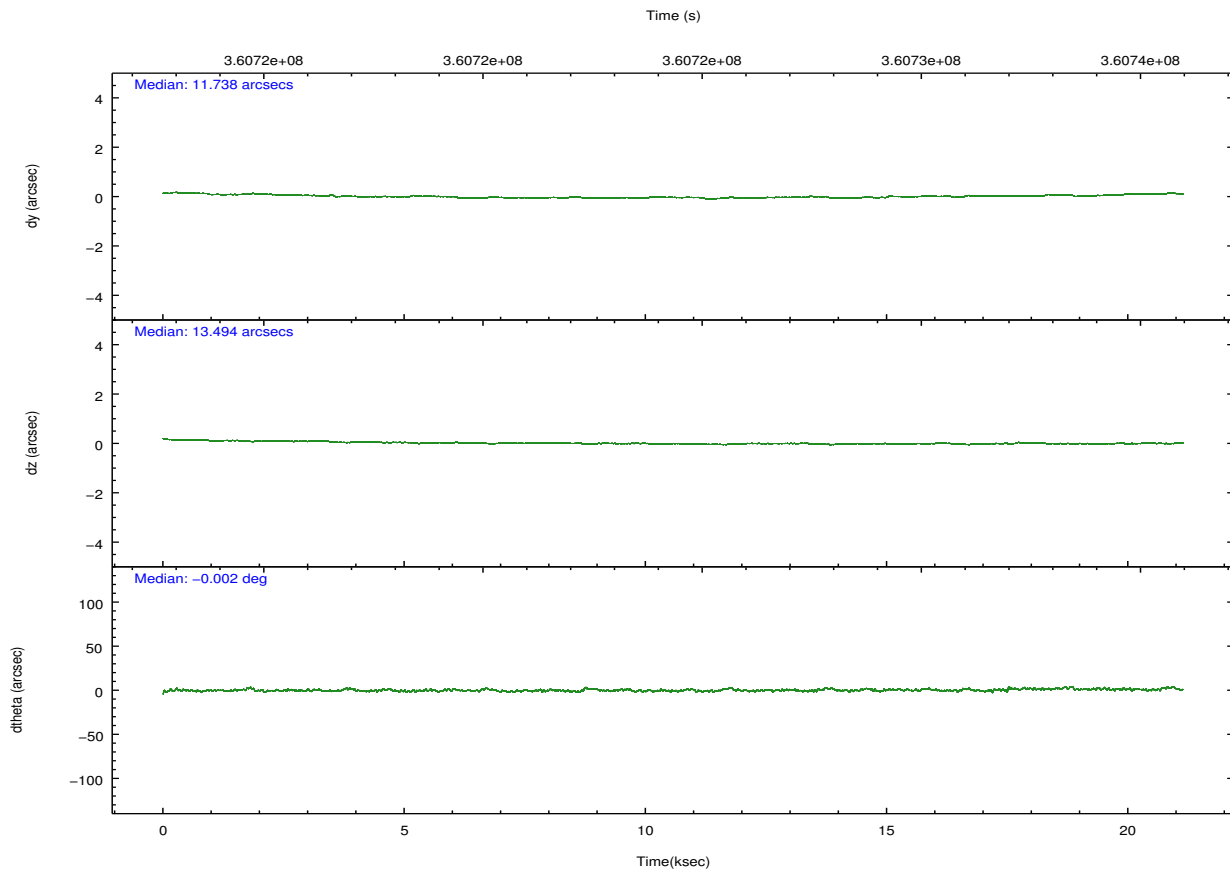
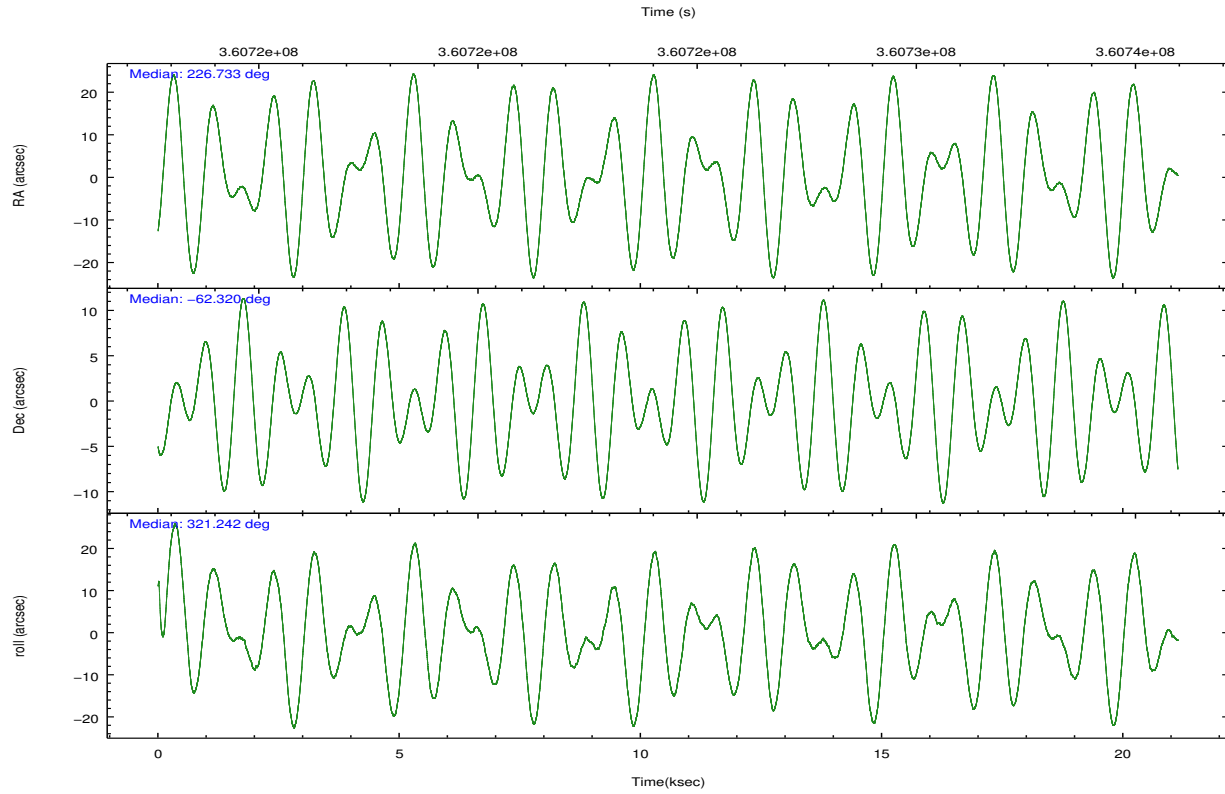
	ccd 0	ccd 1	ccd 2	ccd 3	ccd 6	ccd 7		ccd 0	ccd 1	ccd 2	ccd 3	ccd 6	ccd 7
level 1 events	190474	198846	203395	203409	225495	295310	grade 0 events	11301	10508	10630	11687	11816	10919
rejected events	164228	171465	178804	177224	197093	171725		5%	5%	5%	5%	5%	3%
rejected %	86%	86%	87%	87%	87%	58%	grade 1 events	136	106	134	157	140	290
								0%	0%	0%	0%	0%	0%
							grade 2 events	5823	6451	5320	5154	6178	25649
								3%	3%	2%	2%	2%	8%
							grade 3 events	2398	2479	2242	2432	2446	10165
								1%	1%	1%	1%	1%	3%
							grade 4 events	2209	2456	2321	2433	2442	10322
								1%	1%	1%	1%	1%	3%
							grade 5 events	8900	9294	8619	9849	10477	27681
								4%	4%	4%	4%	4%	9%
							grade 6 events	4522	5496	4086	4490	5536	66581
								2%	2%	2%	2%	2%	22%
							grade 7 events	155185	162056	170043	167207	186460	143703
								81%	81%	83%	82%	82%	48%

2.2 Compared Parameters

Parameter	Planned	Actual	Parameter	Planned	Actual
Instrument	ACIS	ACIS	Obspar format version number	7	7
Detector	ACIS-012367	ACIS-012367	Obspar file type	PREDICTED	ACTUAL
Grating	NONE	NONE	Obspar update status	NONE	UPDATED
Data mode	FAINT	FAINT	CCD I0 on	Y	Y
Observation mode	POINTING	POINTING	CCD I1 on	Y	Y
[deg] Pointing RA	226.674654	226.7332163986282	CCD I2 on	Y	Y
[deg] Pointing Dec	-62.316361	-62.32044826735901	CCD I3 on	Y	Y
[deg] Pointing Roll	320.992462	321.2530105056155	CCD S0 on	N	N
[mm] SIM focus pos	-0.782348	-0.7809083437167272	CCD S1 on	N	N
[mm] SIM defocus	0	0.001439871863259334	CCD S2 on	O2	Y
[mm] SIM translation stage pos	-233.592463	-233.5874344608287	CCD S3 on	O1	Y
[mm] SIM translation stage offset	0	-0.005018542100998502	CCD S4 on	N	N
[s] Observation start time (MET)	360714903.184000	360713466.53374	CCD S5 on	N	N
Observation start date	2009-06-06T22:33:57	2009-06-06T22:11:06	Number of optional ACIS chips dropped	0	0
[s] Observation end time (MET)	360734903.184000	360735362.58483	On-chip summing requested	N	N
Observation end date	2009-06-07T04:07:17	2009-06-07T04:16:02	Subarray requested	NONE	NONE
Read mode	TIMED	TIMED	Alternating exposures requested	N	N
			[s] Primary exposure time	0.000000	3.2

2.3 Aspect



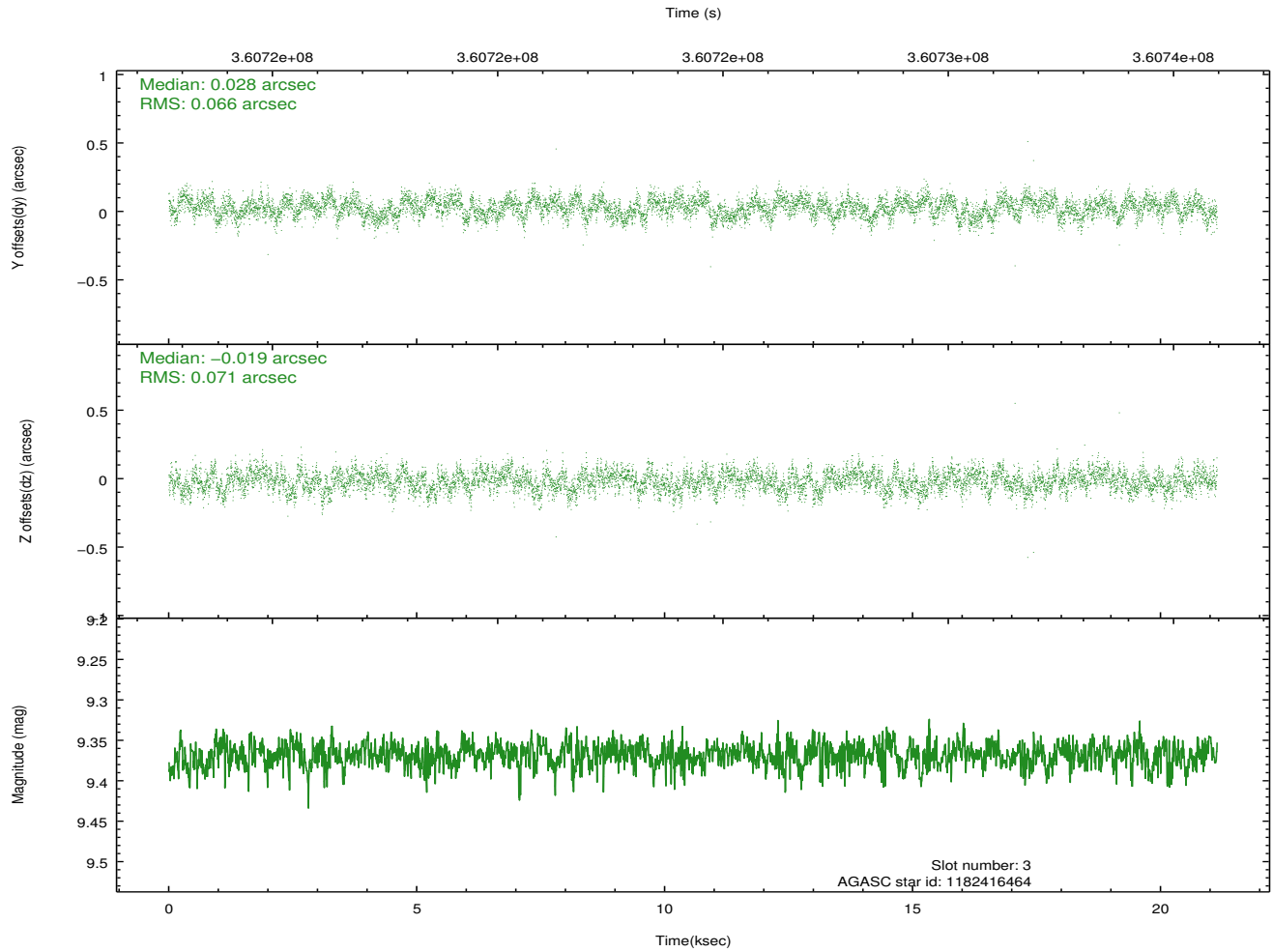
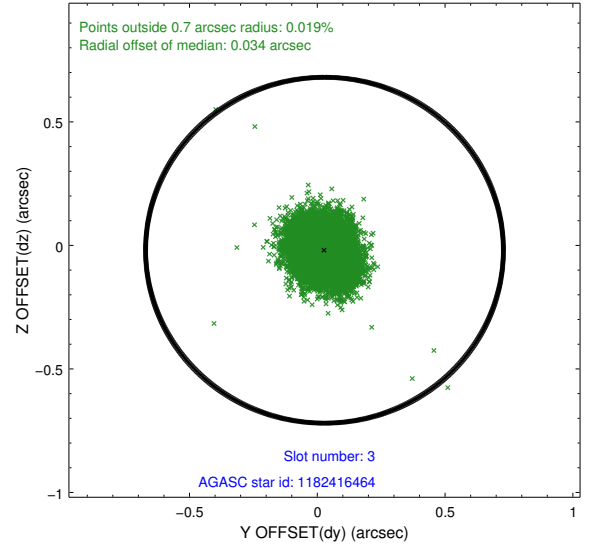
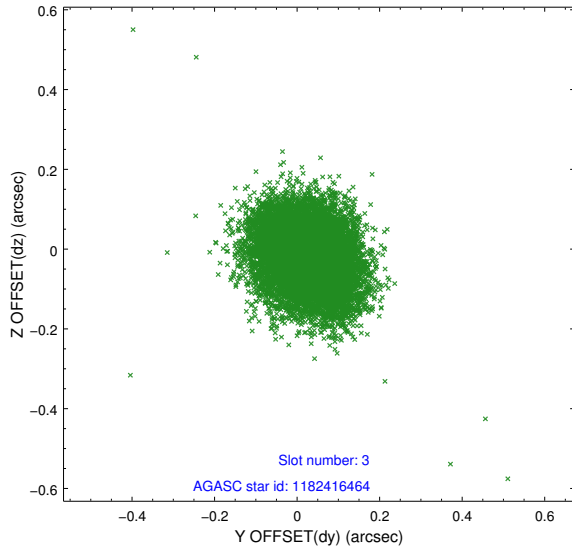


Slot Statistics

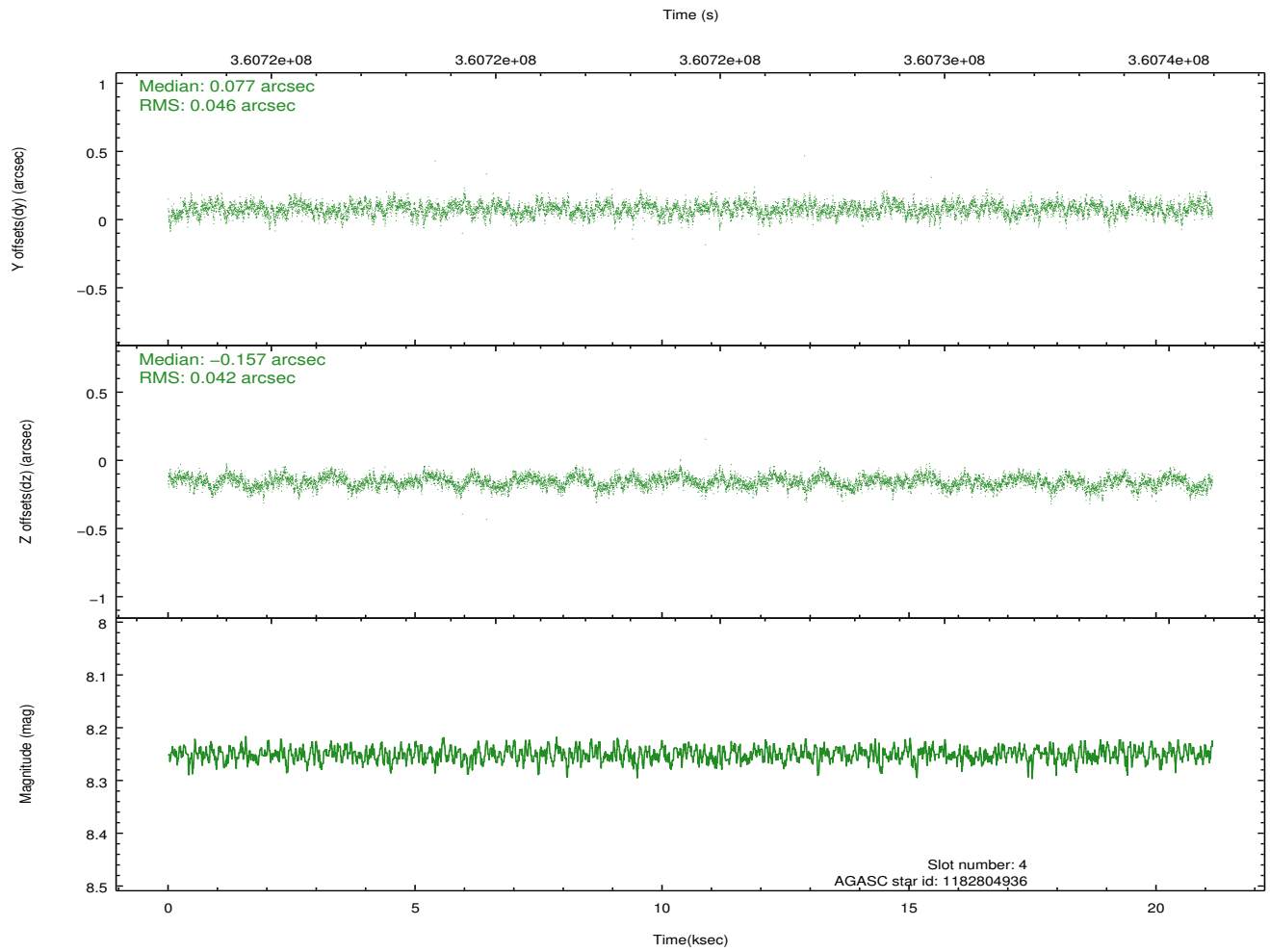
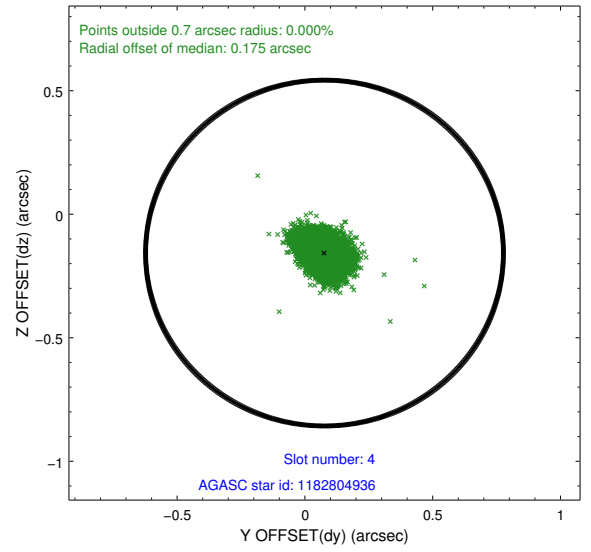
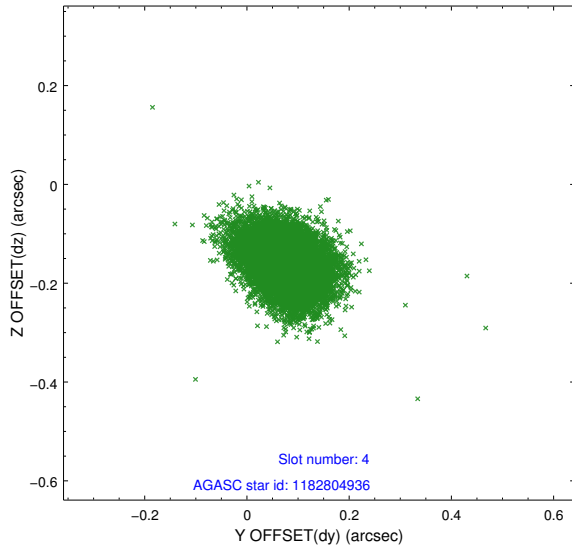
slot	status	id	mag	n_pts	med_dy	med_dz	dr1	dr2	ra	dec	mean_y	mean_z
0	FID	ACIS-I-2	7.01	5156	-0.159	-0.077	0.010	0.022	0.000000	0.000000	-766.54	-843.50
1	FID	ACIS-I-4	7.04	5156	0.115	0.084	0.008	0.013	0.000000	0.000000	2147.73	1062.72
2	FID	ACIS-I-6	7.11	5155	-0.056	0.056	0.012	0.021	0.000000	0.000000	393.88	1705.08
3	GUIDE	1182416464	9.37	10301	0.028	-0.019	0.103	0.164	227.177398	-61.754390	-605.68	2108.30
4	GUIDE	1182804936	8.25	10306	0.077	-0.157	0.065	0.108	226.912171	-62.826193	1459.91	-1180.90
5	GUIDE	1182805344	9.20	10301	-0.095	0.161	0.082	0.134	226.795689	-62.992987	1687.74	-1768.40
6	GUIDE	1182937736	9.36	10278	-0.066	0.015	0.093	0.153	228.200274	-62.172219	1684.72	1993.36
7	GUIDE	1182938088	8.33	10304	0.058	0.005	0.066	0.102	227.625077	-62.192680	967.81	1341.86

2.4 Star Slots

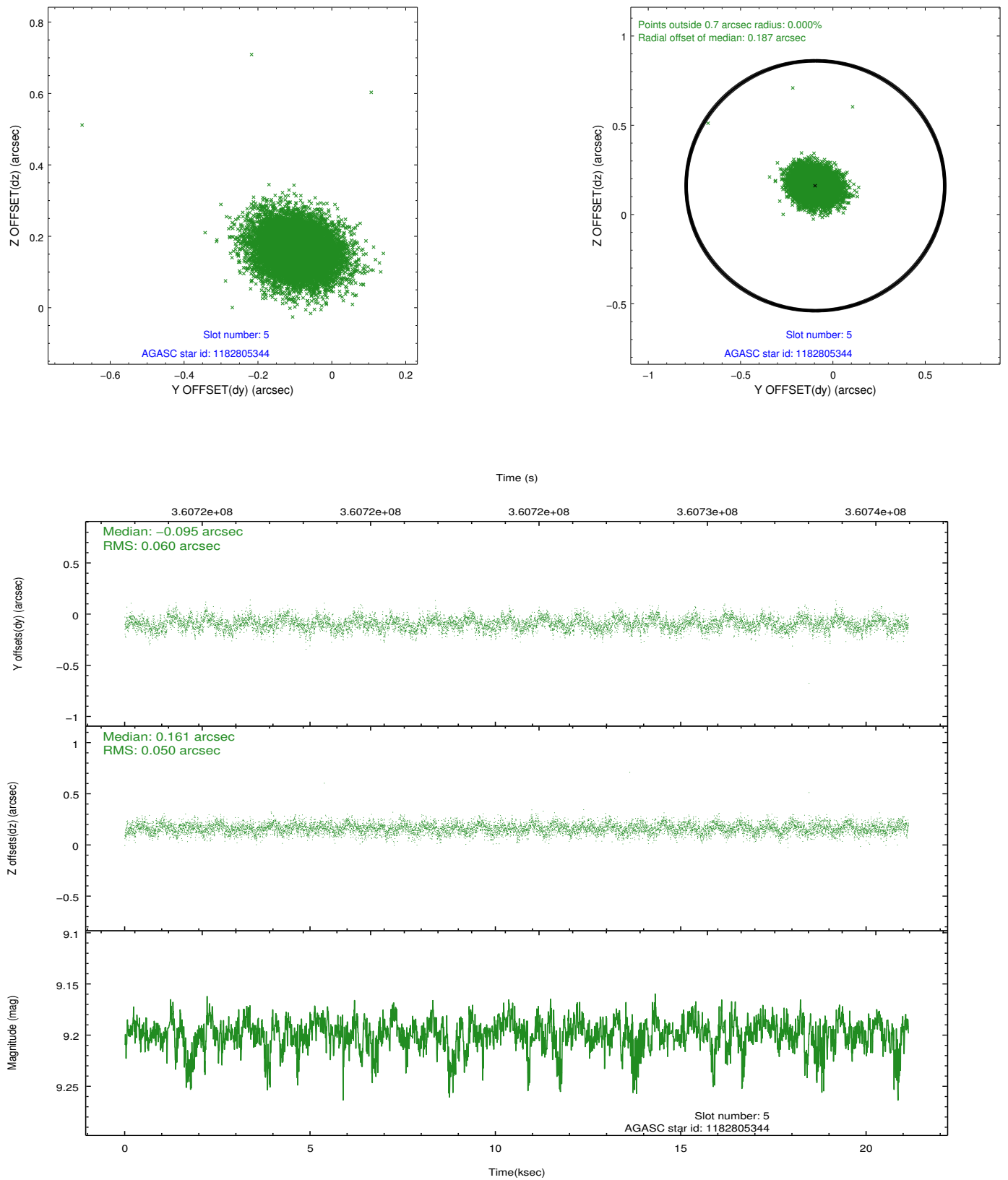
2.4.1 Slot 3



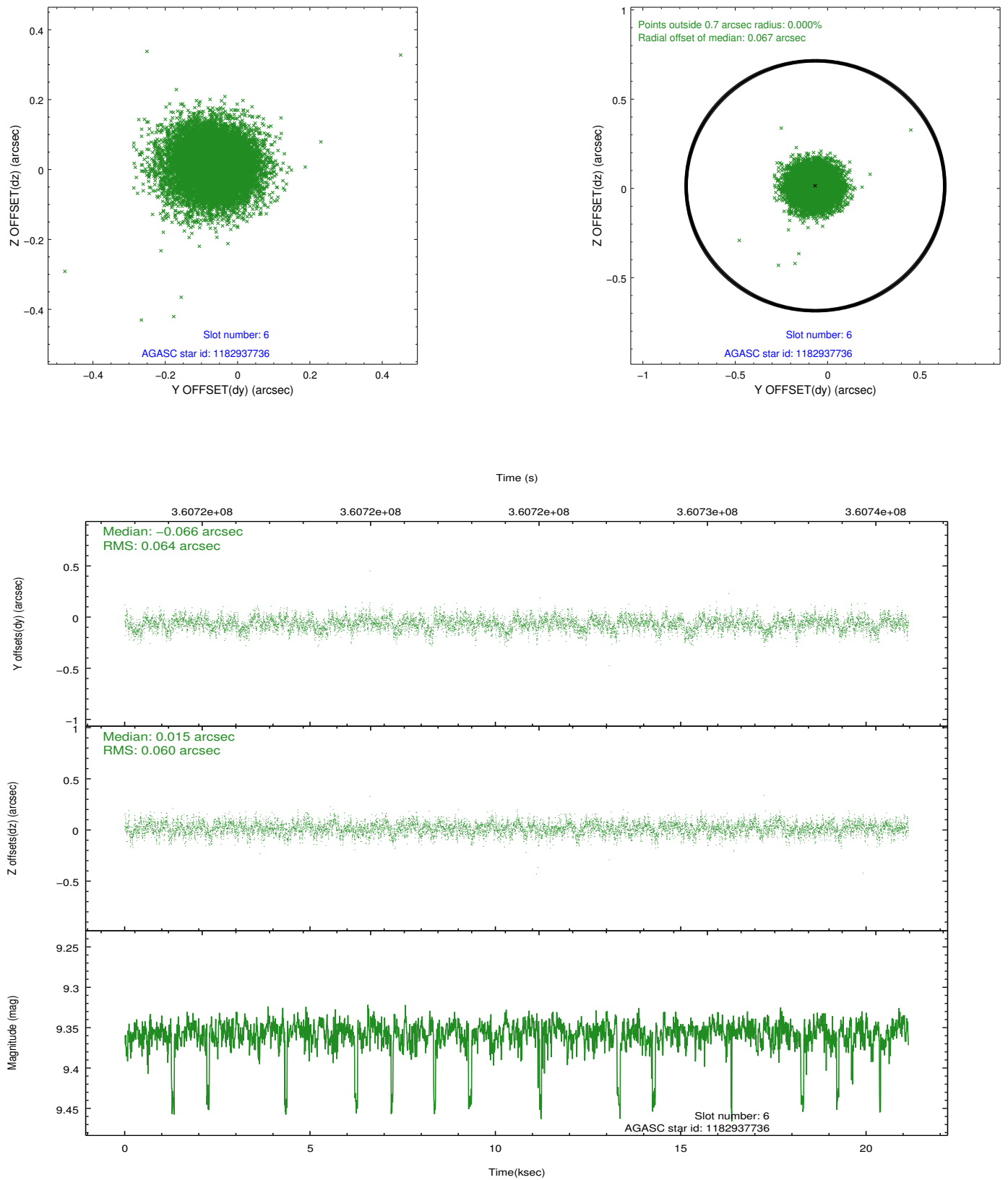
2.4.2 Slot 4



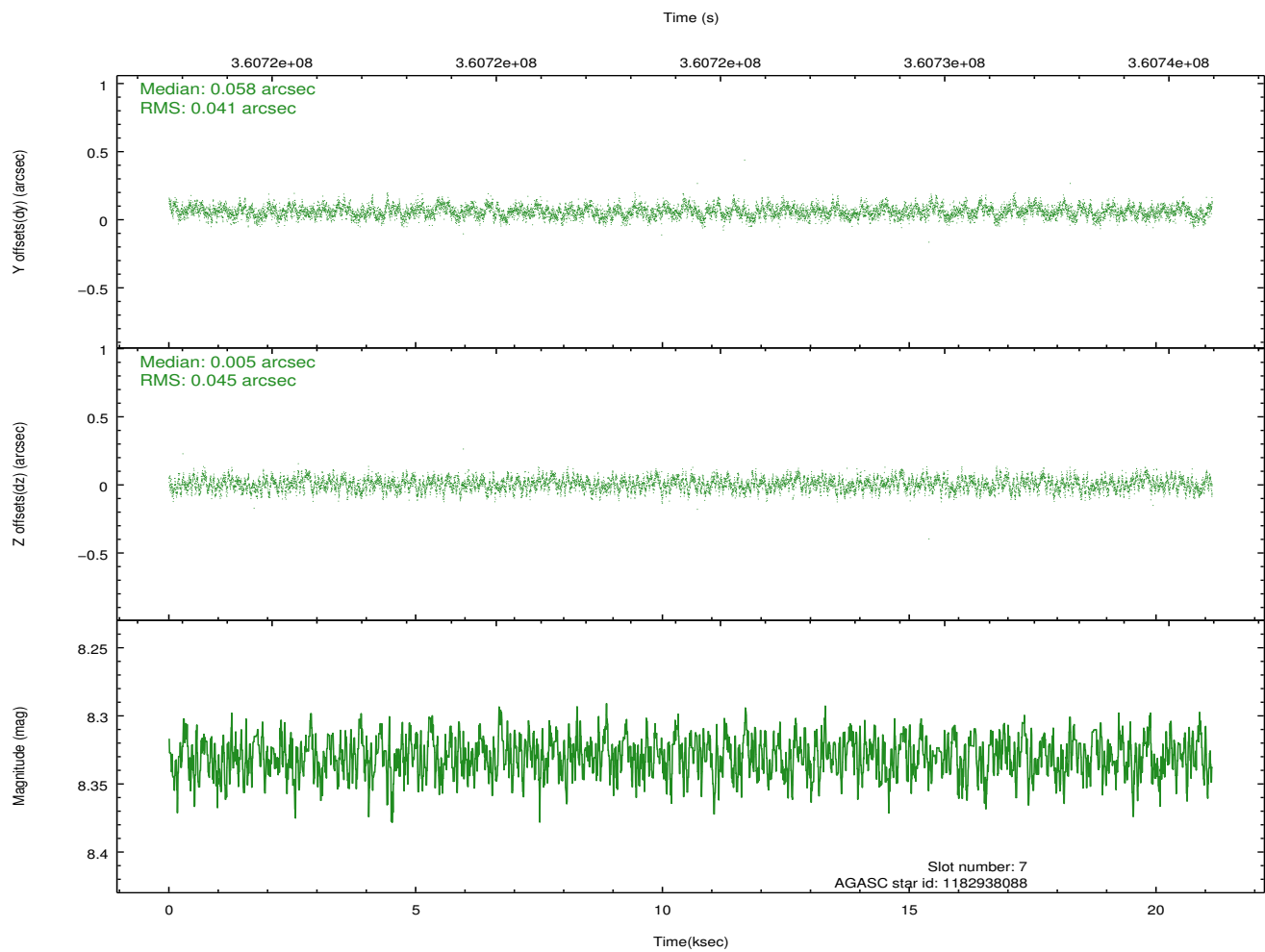
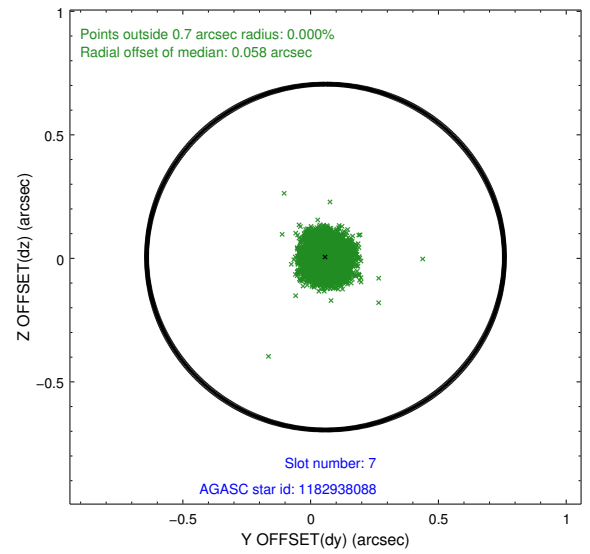
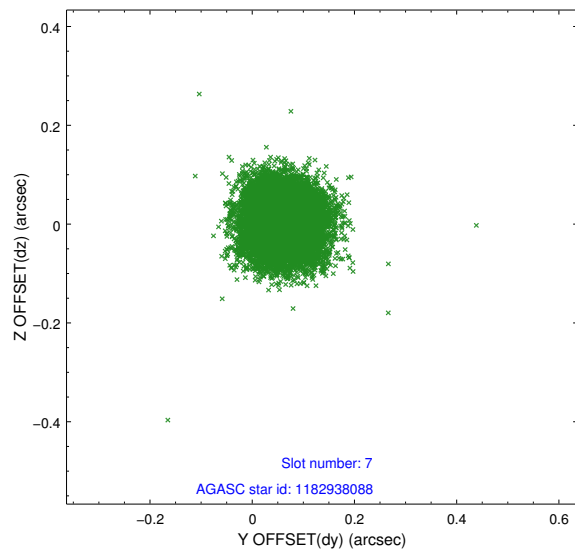
2.4.3 Slot 5



2.4.4 Slot 6

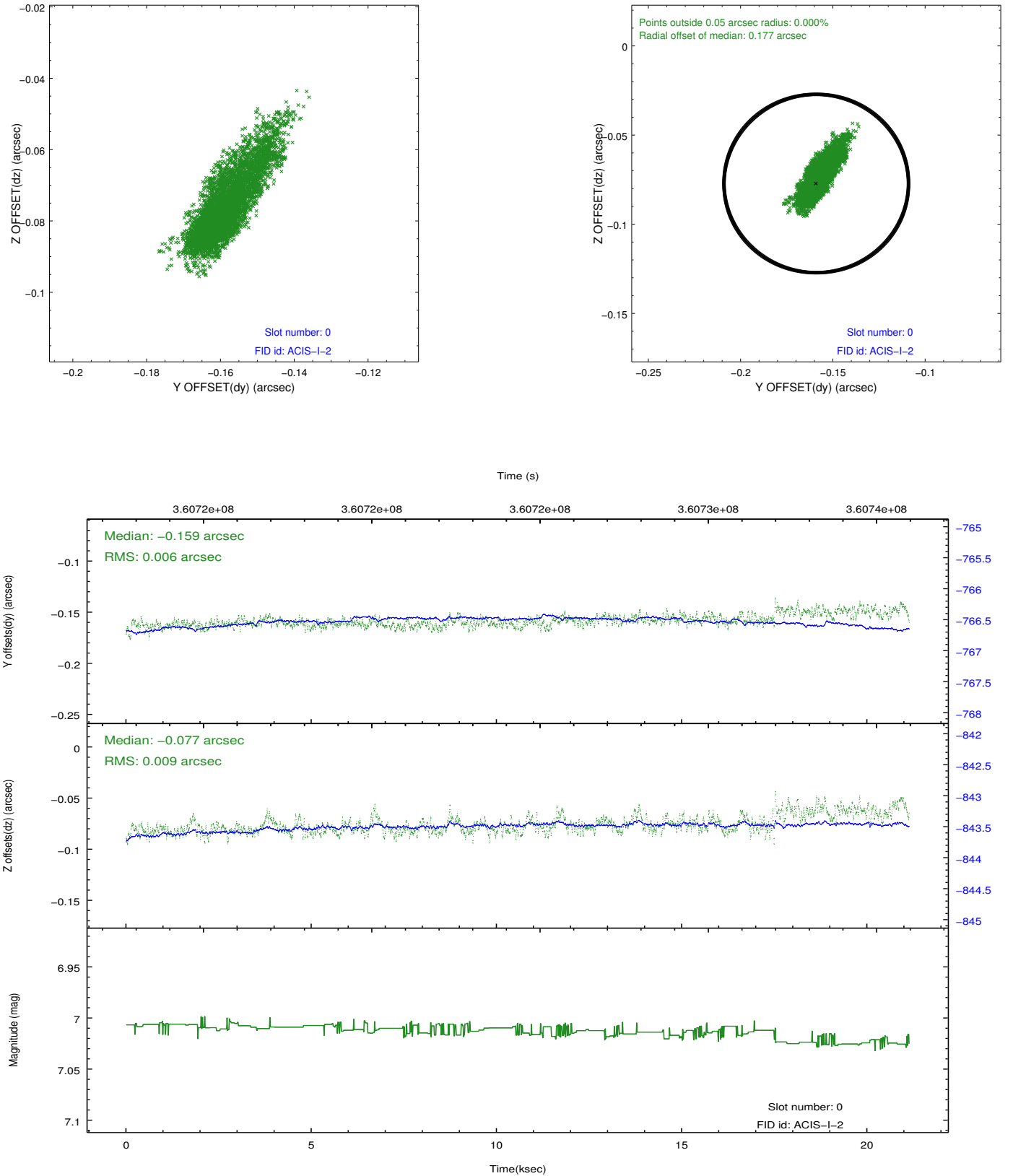


2.4.5 Slot 7

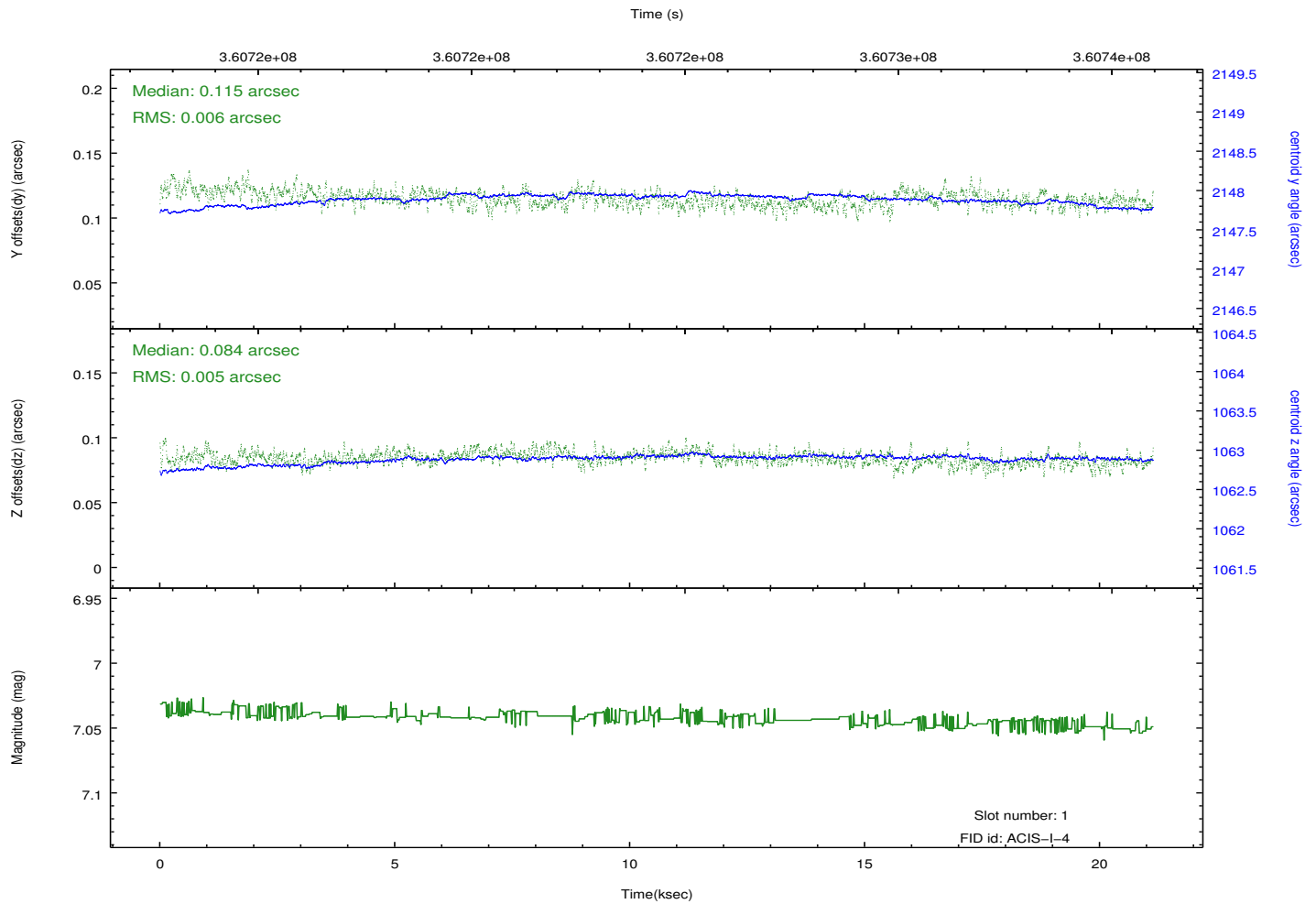
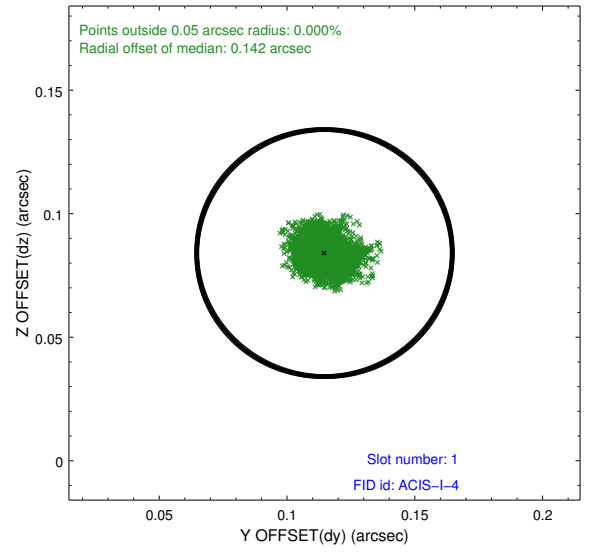
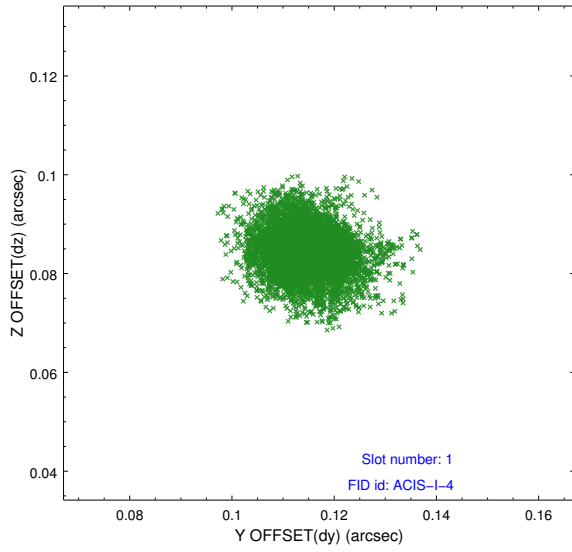


2.5 FID Slots

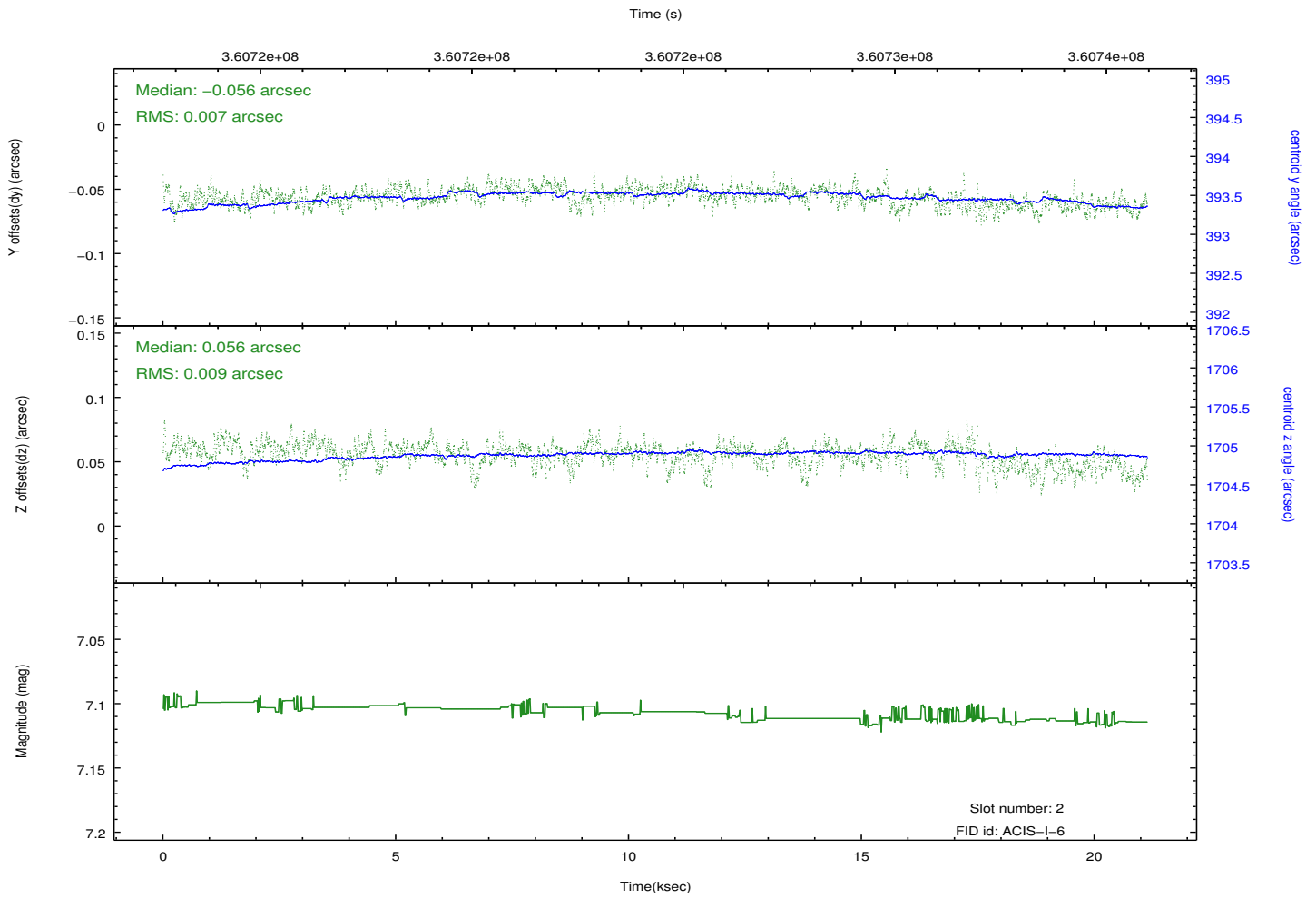
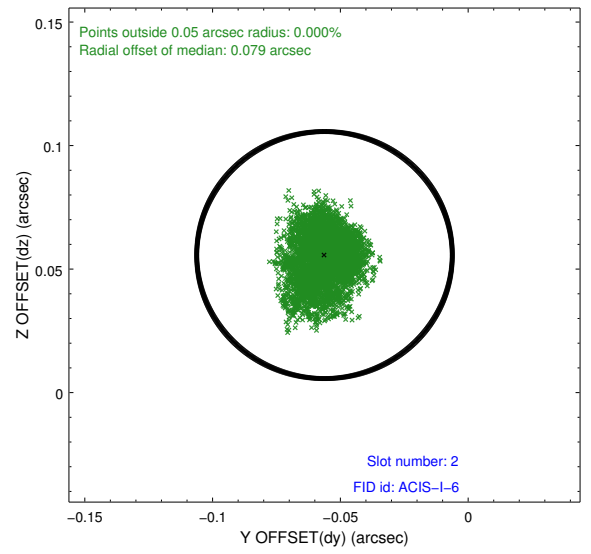
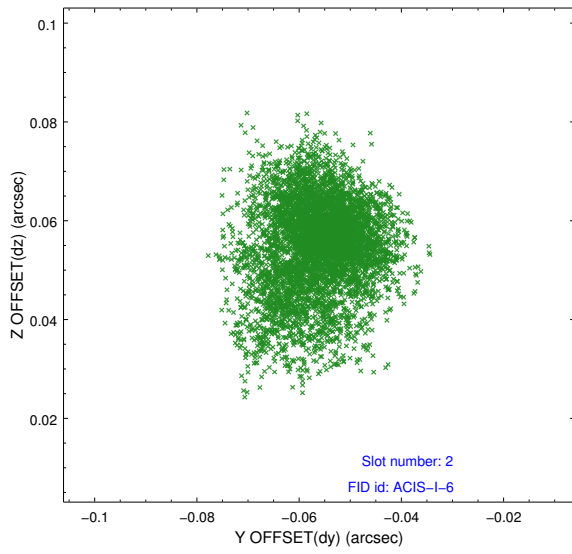
2.5.1 Slot 0



2.5.2 Slot 1



2.5.3 Slot 2



A Summary

A.1 Status

V&V Scientist	Jen Lauer
V&V Date (YYYY-MM-DD)	2012.06.12
V&V Edition	1
V&V Disposition and Status	OK
V&V Charge Time	19.9487999

A.2 Comments