

V&V Reference Report

L2 ASCDS Version : 8.4.5

Observation 10126 - L2 Version 2
Chandra X-Ray Center

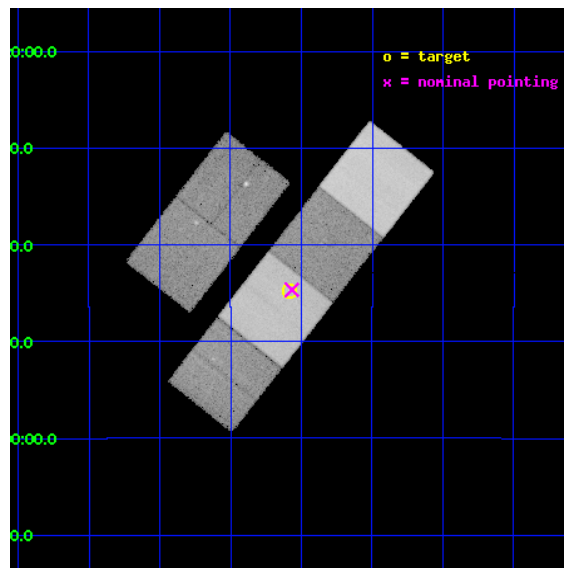
L2 Processing Date : Jun 8 2012

Contents

1	Front	2
2	OBI	3
2.1	OBI	3
2.1.1	Images	3
2.1.2	Bias	3
2.1.3	Parameters	4
2.1.4	Events	4
2.2	Compared Parameters	5
2.3	Aspect	6
2.4	Star Slots	9
2.4.1	Slot 3	9
2.4.2	Slot 4	10
2.4.3	Slot 5	11
2.4.4	Slot 6	12
2.4.5	Slot 7	13
2.5	FID Slots	14
2.5.1	Slot 0	14
2.5.2	Slot 1	15
2.5.3	Slot 2	16
A	Summary	17
A.1	Status	17
A.2	Comments	17

1 Front

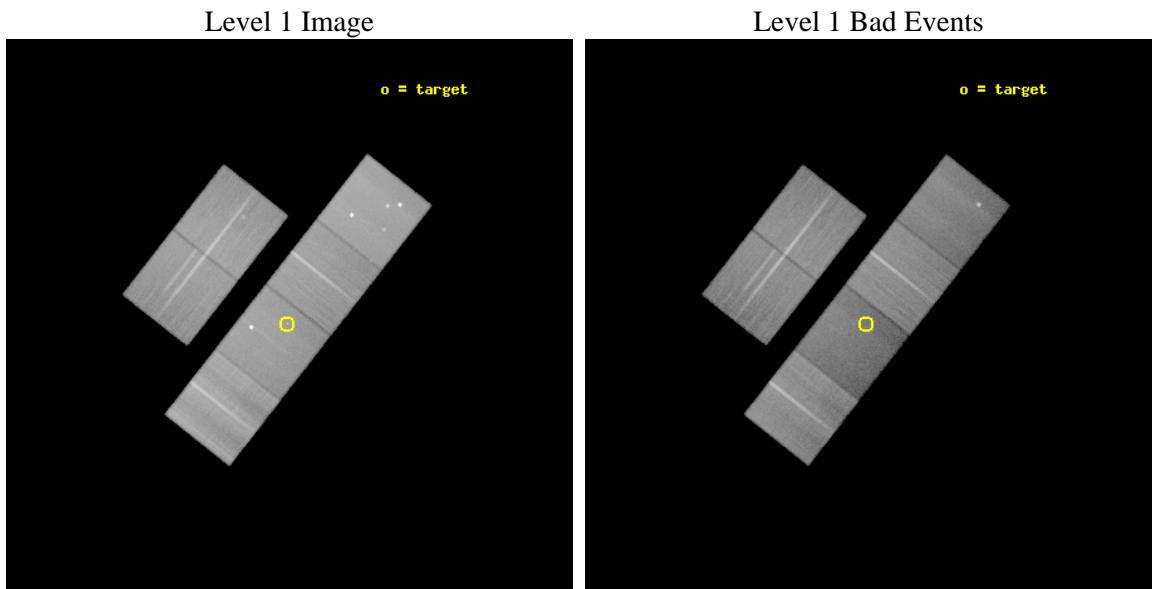
seq_num	501053	Sequence number
obs_id	10126	Observation id
title	X-ray observations of a TeV-emitting pulsar tail	Proposal title
observer	Dr Zdenka Misanovic	Principal investigator
object	J1833-087	Source name
dtcycle	0	
cycle	P	events from which exps? Prim/Second/Both
ra_targ	278.64625	Observer's specified target RA [deg]
dec_targ	-8.746056	Observer's specified target Dec [deg]
ra_nom	278.64165031683	Nominal RA [deg]
dec_nom	-8.7443928001048	Nominal Dec [deg]
roll_nom	128.15592587943	Nominal Roll [deg]
revision	2	Processing version of data
ontime	47155.199824393	Sum of GTIs [s]
livetime	46558.092290764	Livetime [s]
ontime2	47148.717773795	Sum of GTIs [s]
ontime3	47148.717783749	Sum of GTIs [s]
ontime5	47155.199824393	Sum of GTIs [s]
ontime6	47155.199824393	Sum of GTIs [s]
ontime7	47155.199824393	Sum of GTIs [s]
ontime8	47148.717773199	Sum of GTIs [s]
l2events	566759	Number of level 2 events



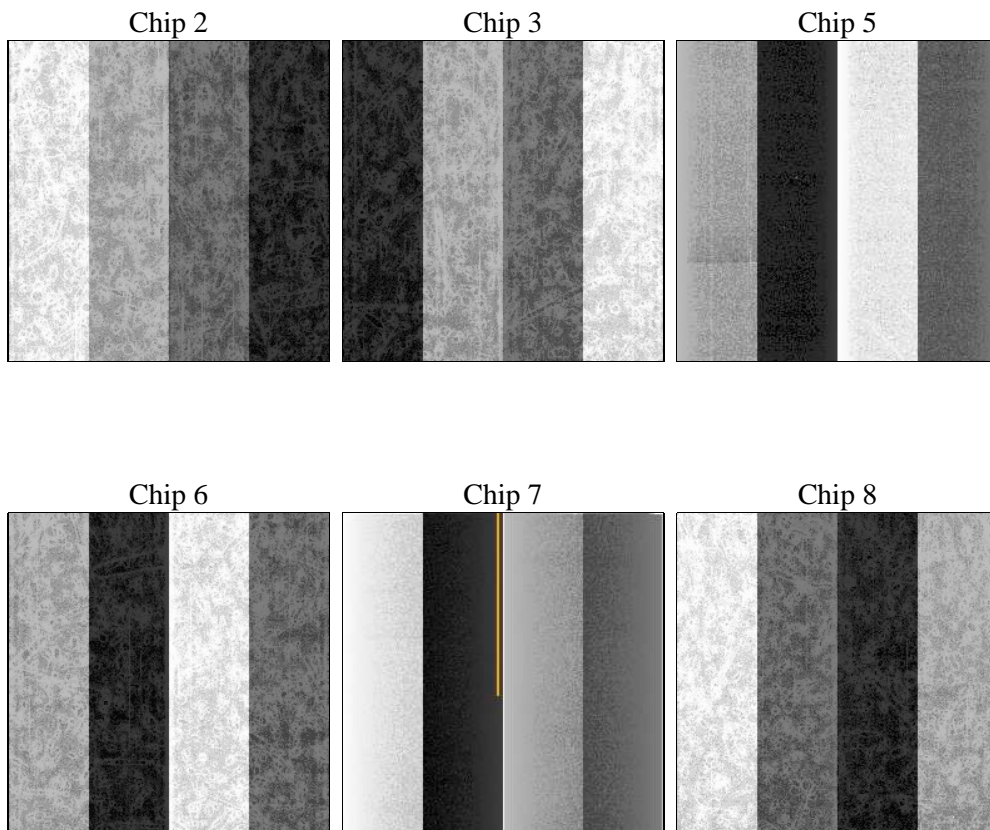
2 OBI

2.1 OBI

2.1.1 Images



2.1.2 Bias



2.1.3 Parameters

obi_num	0	Obi number	sched_exp_time	47000.000000	[s] Scheduled observation exposure time
ascdsver	8.4.5	Processing system revision	ontime	47155.199824393	Sum of GTIs [s]
caldbver	4.4.10	 	ontime2	47148.717773795	Sum of GTIs [s]
date	2012-06-08T09:15:26	Date and time of file creation	ontime3	47148.717783749	Sum of GTIs [s]
revision	2	Processing version of data	ontime5	47155.199824393	Sum of GTIs [s]
			ontime6	47155.199824393	Sum of GTIs [s]
			ontime7	47155.199824393	Sum of GTIs [s]
			ontime8	47148.717773199	Sum of GTIs [s]
			l1events	2571406	Number of level 1 events

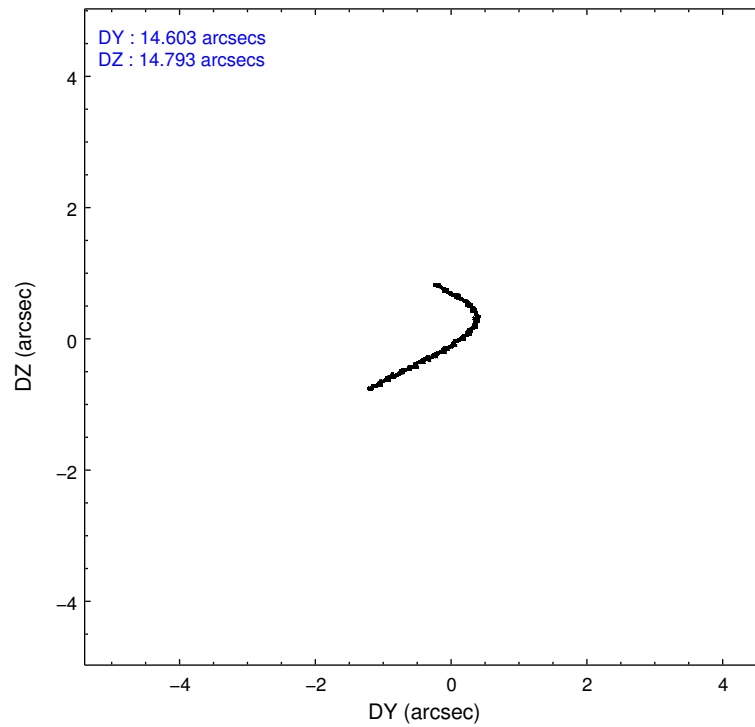
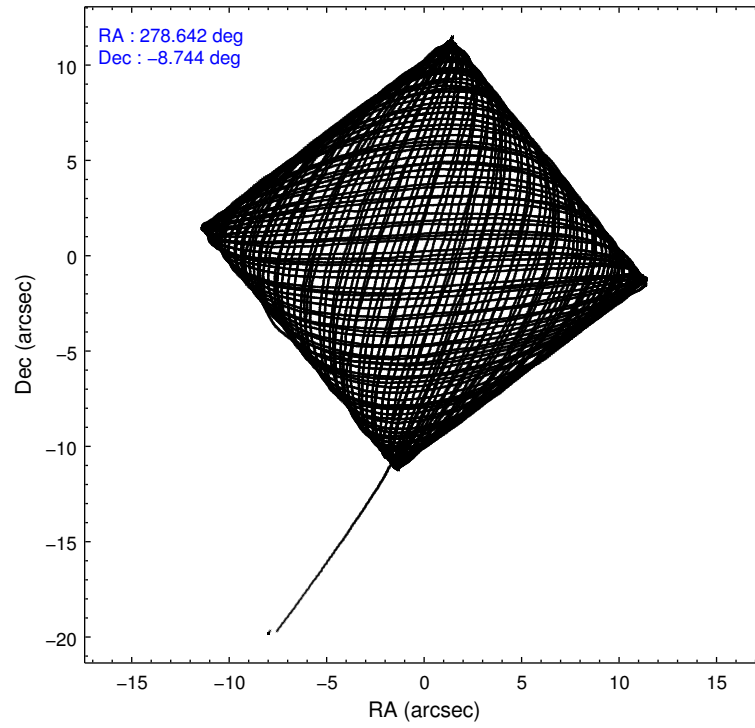
2.1.4 Events

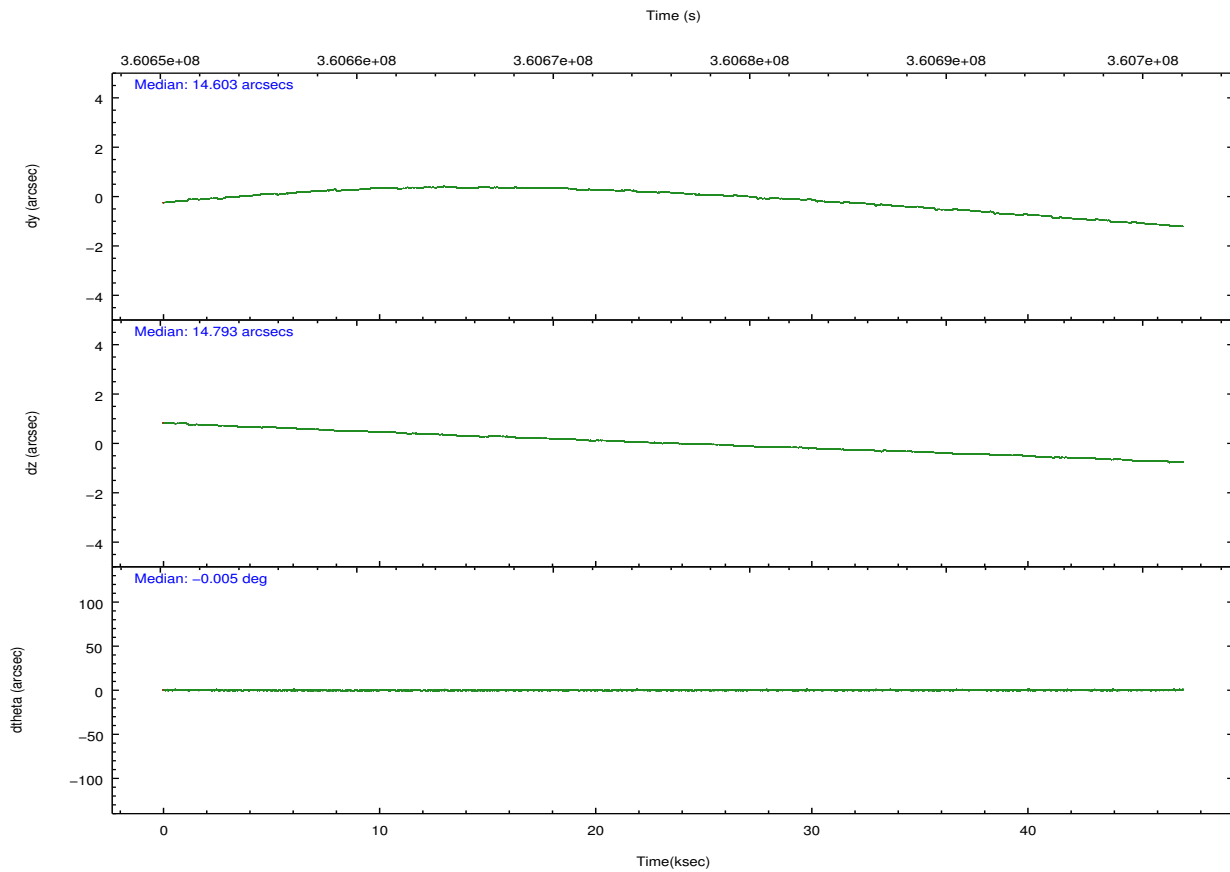
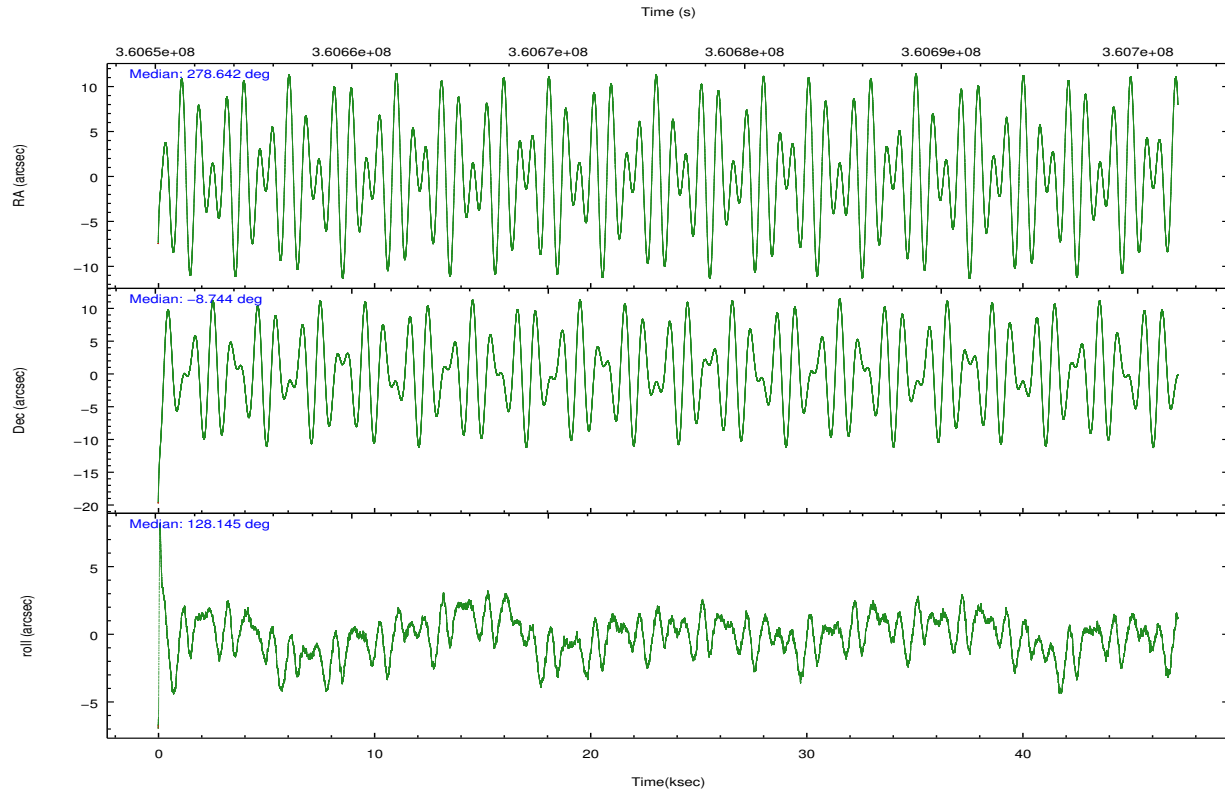
	ccd 2	ccd 3	ccd 5	ccd 6	ccd 7	ccd 8		ccd 2	ccd 3	ccd 5	ccd 6	ccd 7	ccd 8
level 1 events	411789	374889	509615	393910	393463	487740	grade 0 events	15898	14679	34440	16033	19110	35244
rejected events	370977	337575	236875	352171	191653	361537		3%	3%	6%	4%	4%	7%
rejected %	90%	90%	46%	89%	48%	74%	grade 1 events	262	229	1203	213	609	395
								0%	0%	0%	0%	0%	0%
							grade 2 events	9708	7869	84803	9184	39942	29968
								2%	2%	16%	2%	10%	6%
							grade 3 events	4174	4112	10832	4231	32242	13747
								1%	1%	2%	1%	8%	2%
							grade 4 events	4166	3881	10459	4243	17278	12712
								1%	1%	2%	1%	4%	2%
							grade 5 events	11561	13213	38956	13329	40009	20351
								2%	3%	7%	3%	10%	4%
							grade 6 events	6868	6775	132227	8048	93251	34541
								1%	1%	25%	2%	23%	7%
							grade 7 events	359152	324131	196695	338629	151022	340782
								87%	86%	38%	85%	38%	69%

2.2 Compared Parameters

Parameter	Planned	Actual	Parameter	Planned	Actual
Instrument	ACIS	ACIS	Obspar format version number	7	7
Detector	ACIS-235678	ACIS-235678	Obspar file type	PREDICTED	ACTUAL
Grating	NONE	NONE	Obspar update status	NONE	UPDATED
Data mode	VFAINT	VFAINT	CCD I0 on	N	N
Observation mode	POINTING	POINTING	CCD I1 on	N	N
[deg] Pointing RA	278.667460	278.6416503168319	CCD I2 on	O1	Y
[deg] Pointing Dec	-8.754212	-8.744392800104791	CCD I3 on	Y	Y
[deg] Pointing Roll	128.003231	128.1559258794301	CCD S0 on	N	N
[mm] SIM focus pos	-0.684267	-0.6828225247311905	CCD S1 on	O2	Y
[mm] SIM defocus	0	0.001444936568705701	CCD S2 on	Y	Y
[mm] SIM translation stage pos	-190.132523	-190.1400660498719	CCD S3 on	Y	Y
[mm] SIM translation stage offset	0	0.00754346686406393	CCD S4 on	Y	Y
[s] Observation start time (MET)	360652685.184000	360651621.61815	CCD S5 on	N	N
Observation start date	2009-06-06T05:16:59	2009-06-06T05:00:21	Number of optional ACIS chips dropped	0	0
[s] Observation end time (MET)	360699685.184000	360700955.89562	On-chip summing requested	N	N
Observation end date	2009-06-06T18:20:19	2009-06-06T18:42:35	Subarray requested	NONE	NONE
Read mode	TIMED	TIMED	Alternating exposures requested	N	N
			[s] Primary exposure time	0.000000	3.2

2.3 Aspect



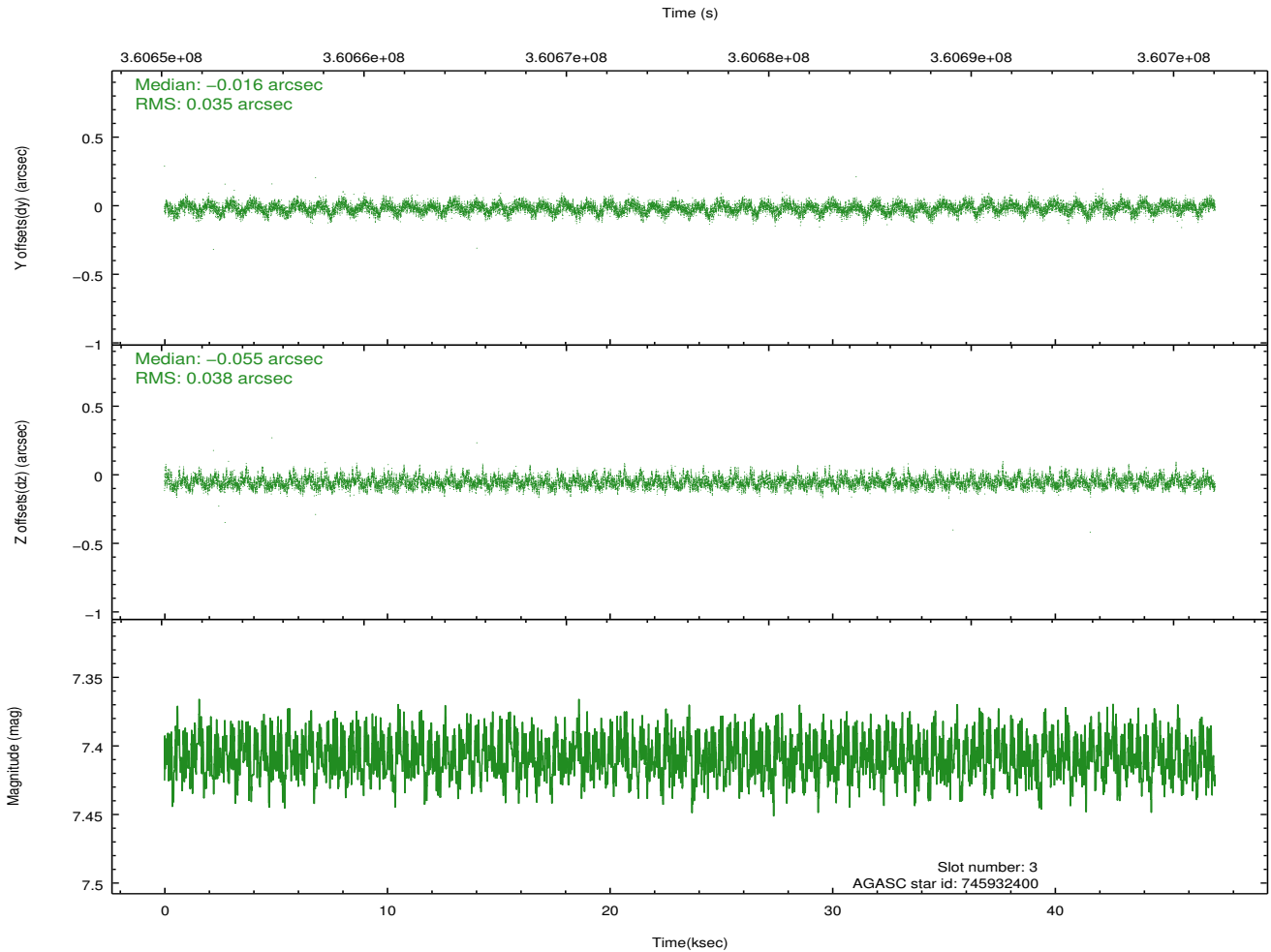
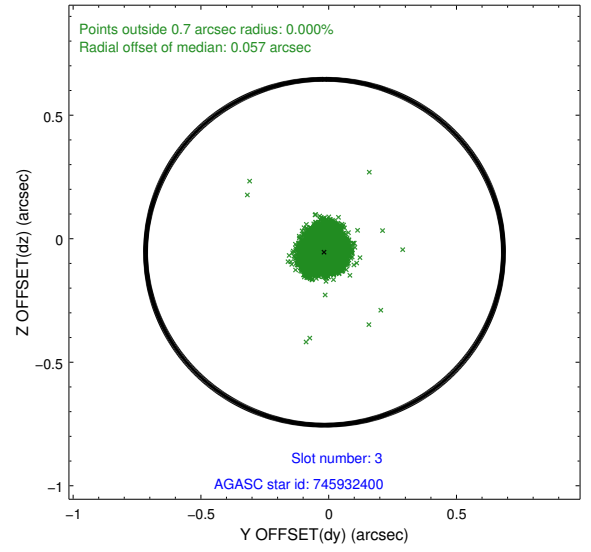
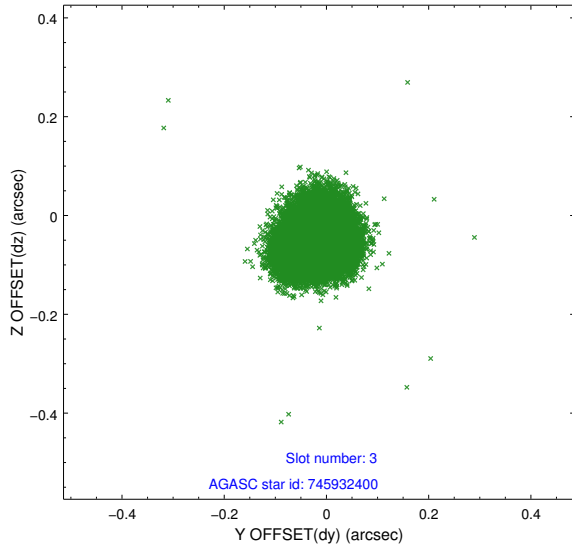


Slot Statistics

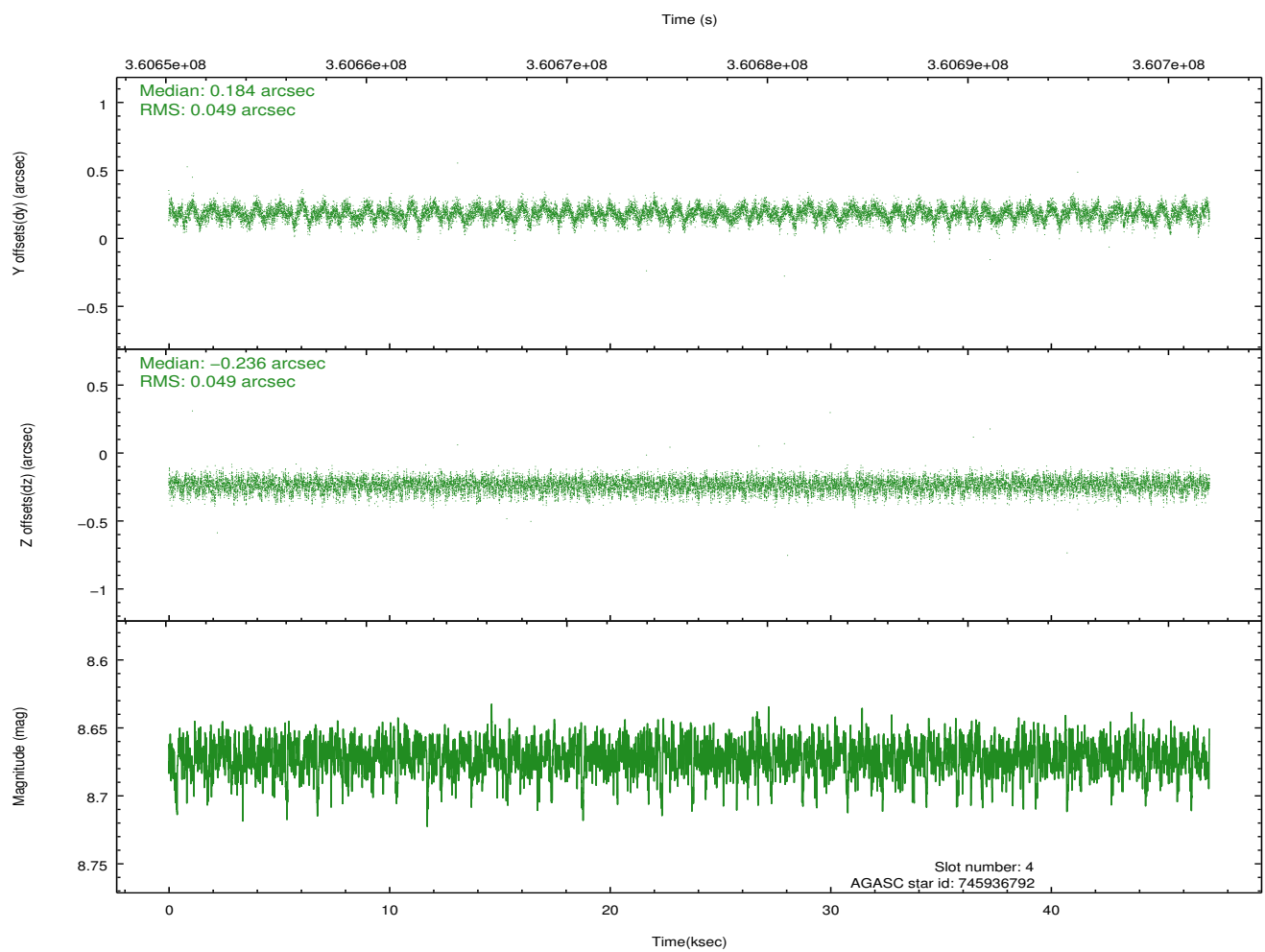
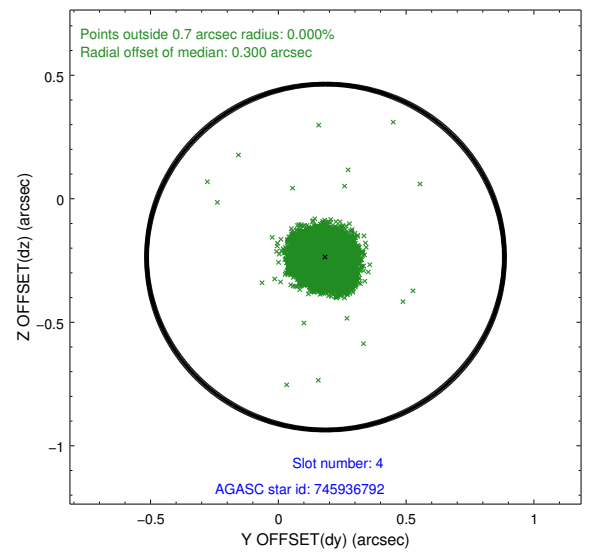
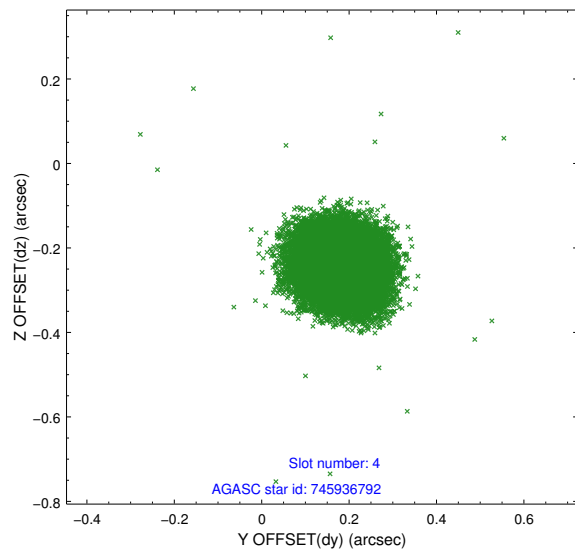
slot	status	id	mag	n_pts	med_dy	med_dz	dr1	dr2	ra	dec	mean_y	mean_z
0	FID	ACIS-S-2	6.93	11510	-0.084	-0.026	0.018	0.041	0.000000	0.000000	-767.48	-1736.22
1	FID	ACIS-S-4	7.02	11510	0.193	0.046	0.009	0.029	0.000000	0.000000	2146.05	172.37
2	FID	ACIS-S-5	7.04	11509	-0.142	-0.014	0.018	0.035	0.000000	0.000000	-1820.42	165.94
3	GUIDE	745932400	7.41	23019	-0.016	-0.055	0.055	0.088	278.879477	-8.689912	-282.00	-736.53
4	GUIDE	745936792	8.67	23001	0.184	-0.236	0.074	0.118	278.841392	-9.051493	-1223.82	171.77
5	GUIDE	745938104	8.07	23015	-0.138	0.132	0.062	0.101	279.090231	-8.877678	-1276.60	-910.35
6	GUIDE	745938592	8.62	22929	0.074	0.131	0.069	0.109	279.317497	-8.670287	-1187.33	-2007.35
7	GUIDE	746460752	8.67	23012	-0.098	0.031	0.065	0.107	278.807572	-9.403686	-2149.02	1047.59

2.4 Star Slots

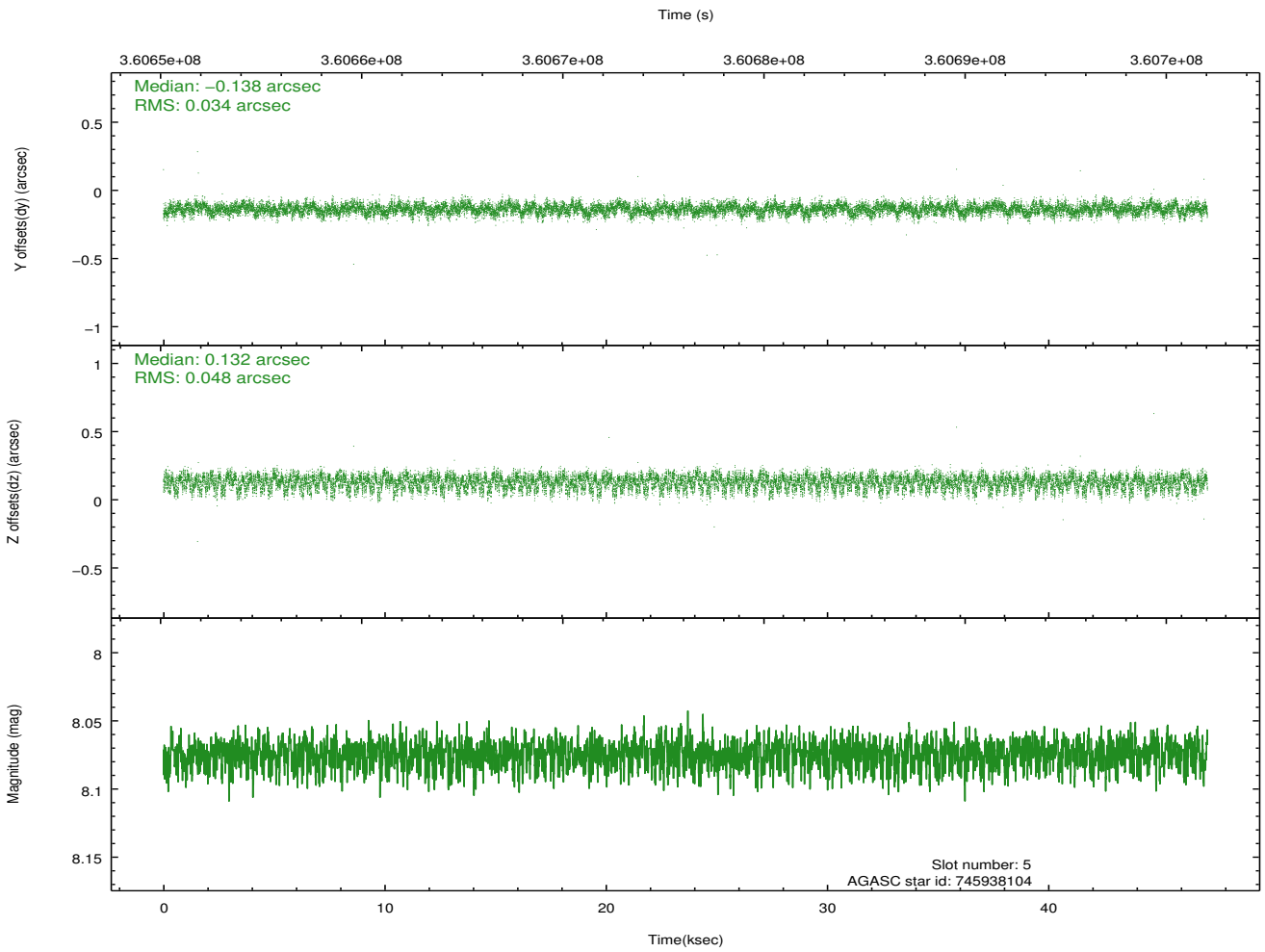
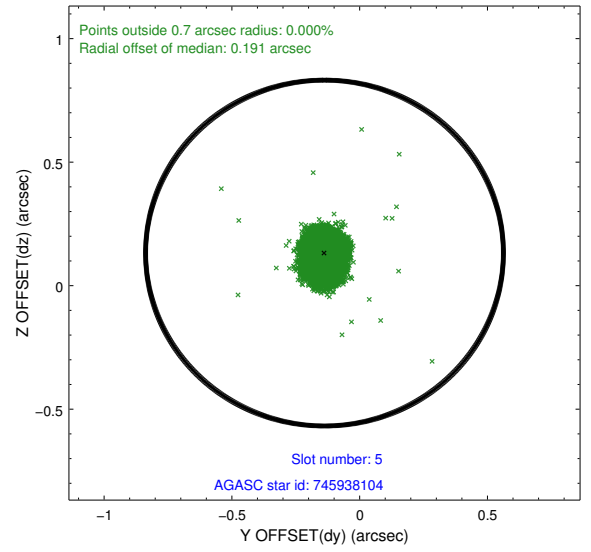
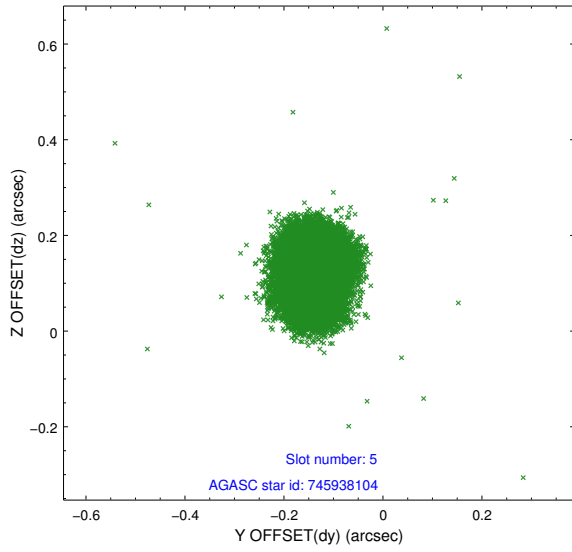
2.4.1 Slot 3



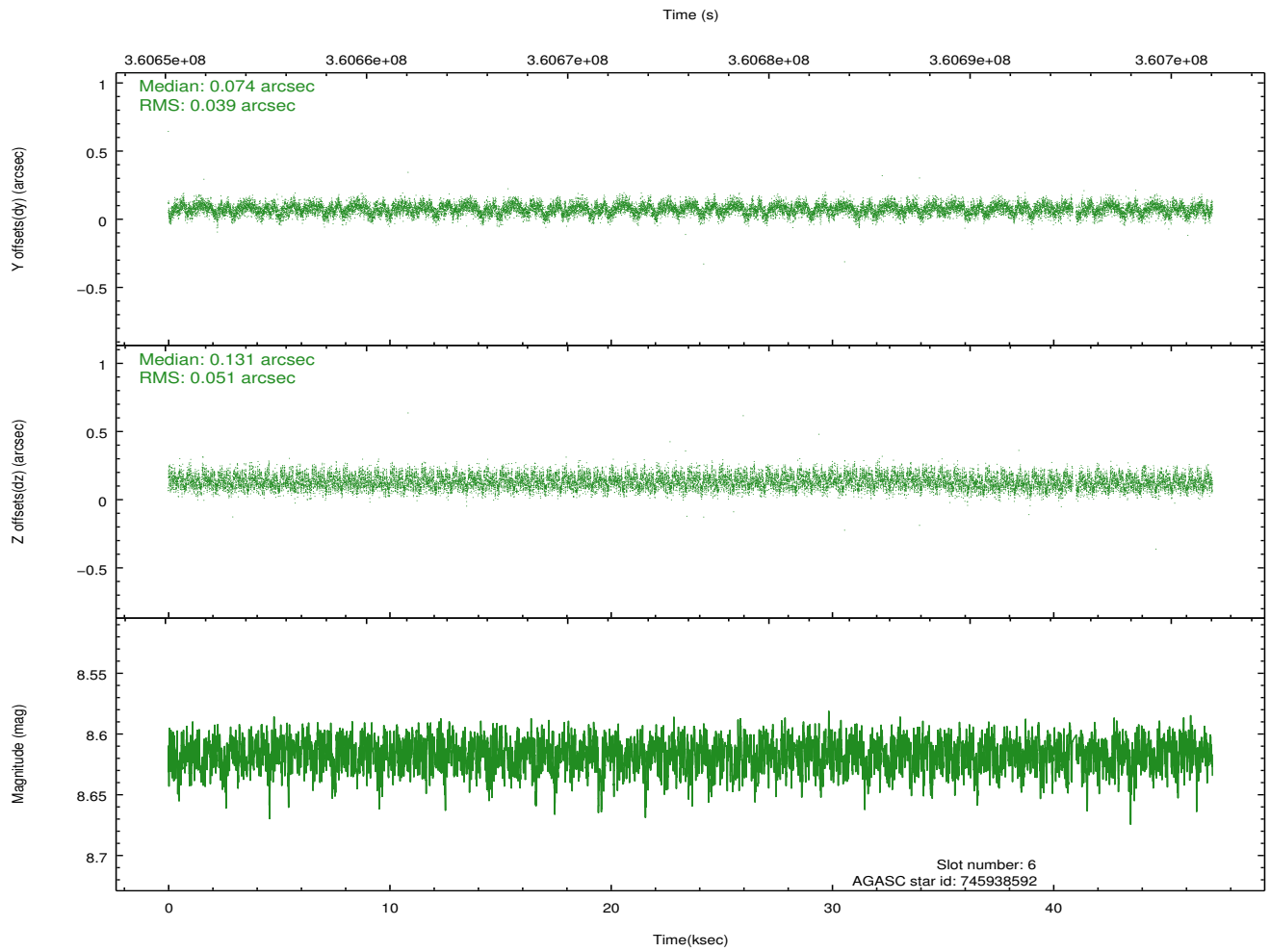
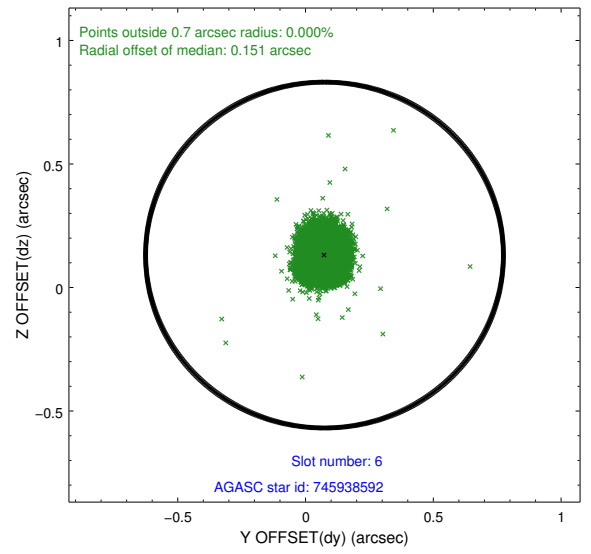
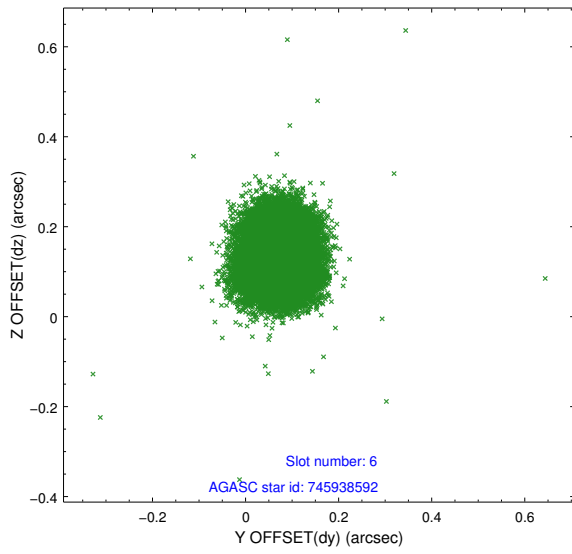
2.4.2 Slot 4



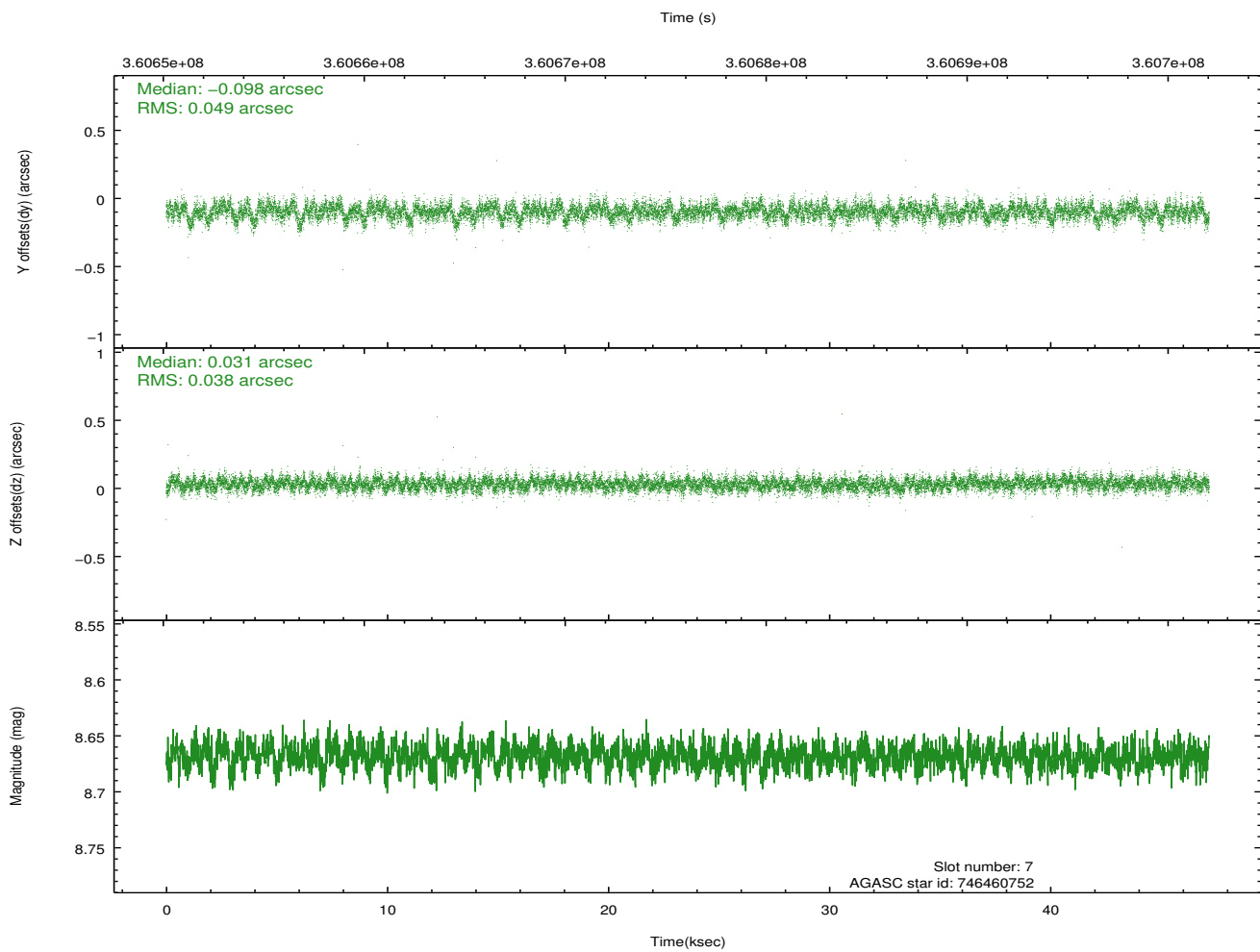
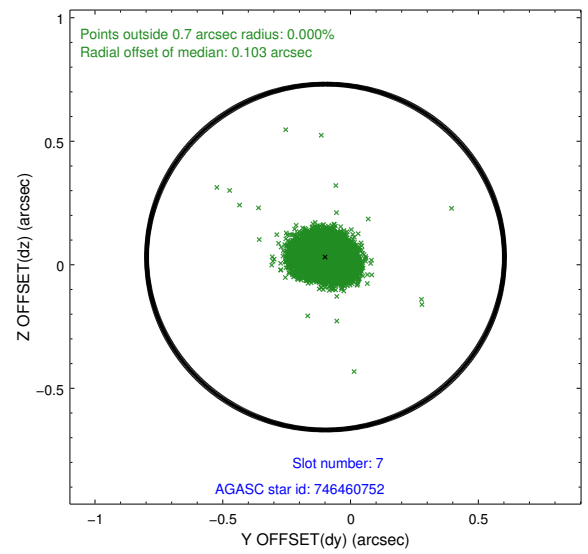
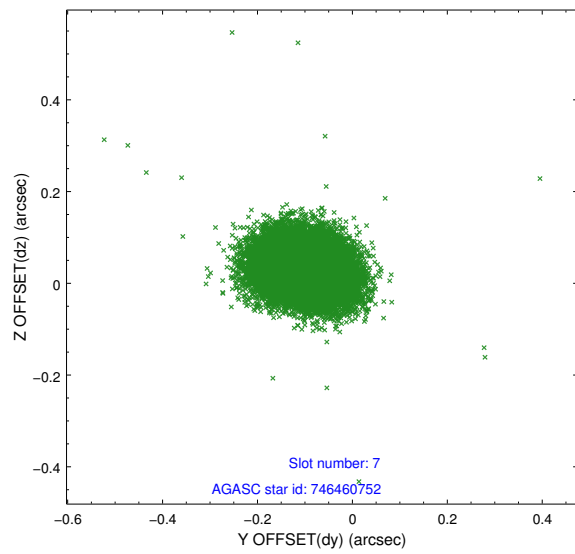
2.4.3 Slot 5



2.4.4 Slot 6

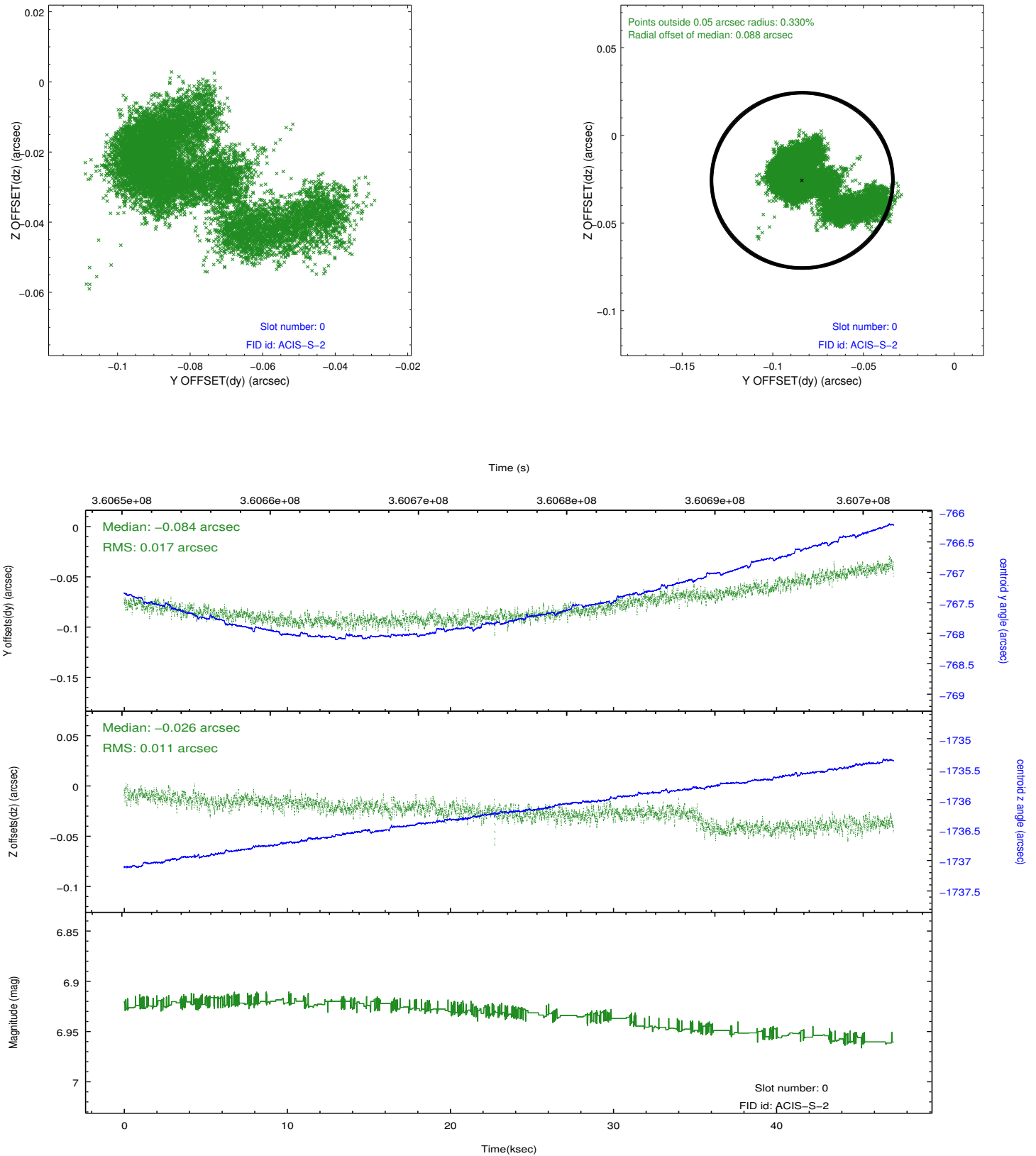


2.4.5 Slot 7

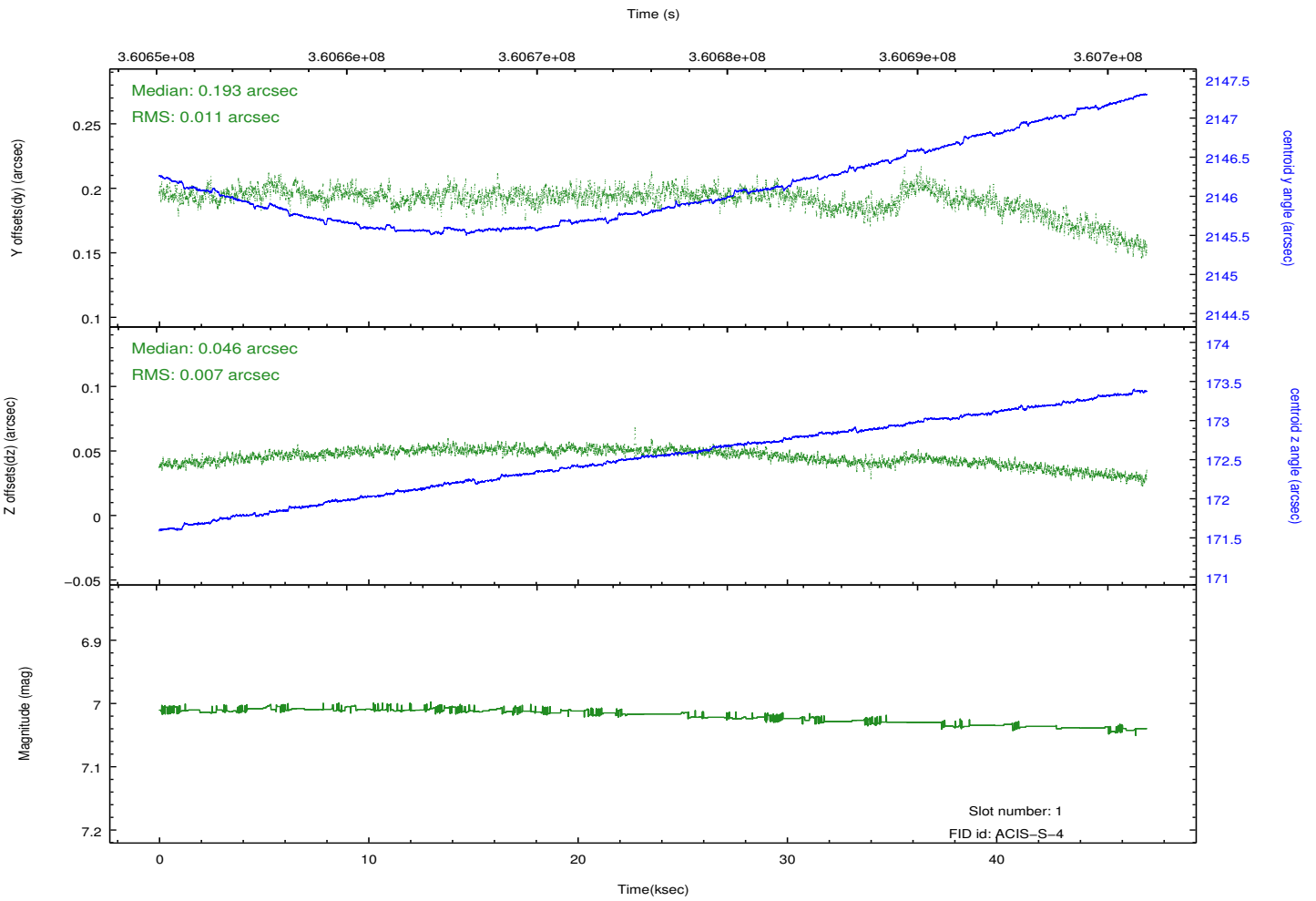
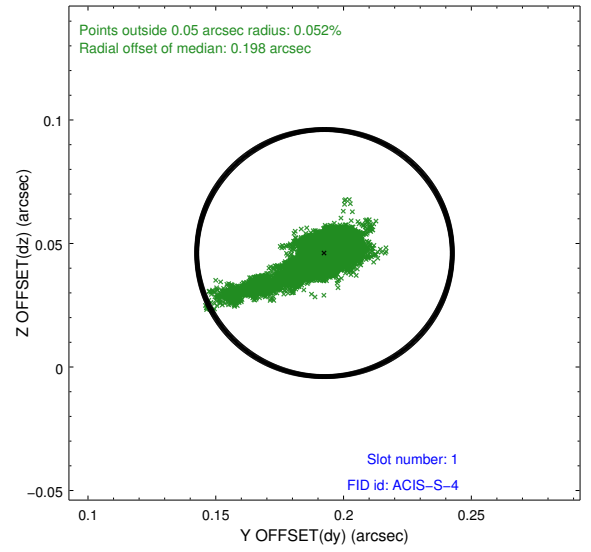
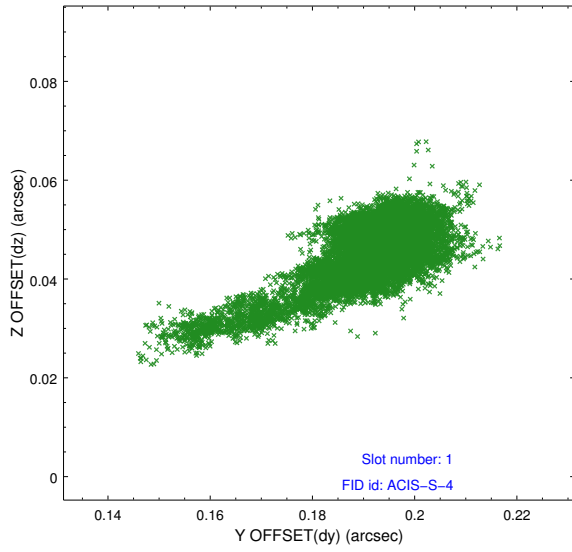


2.5 FID Slots

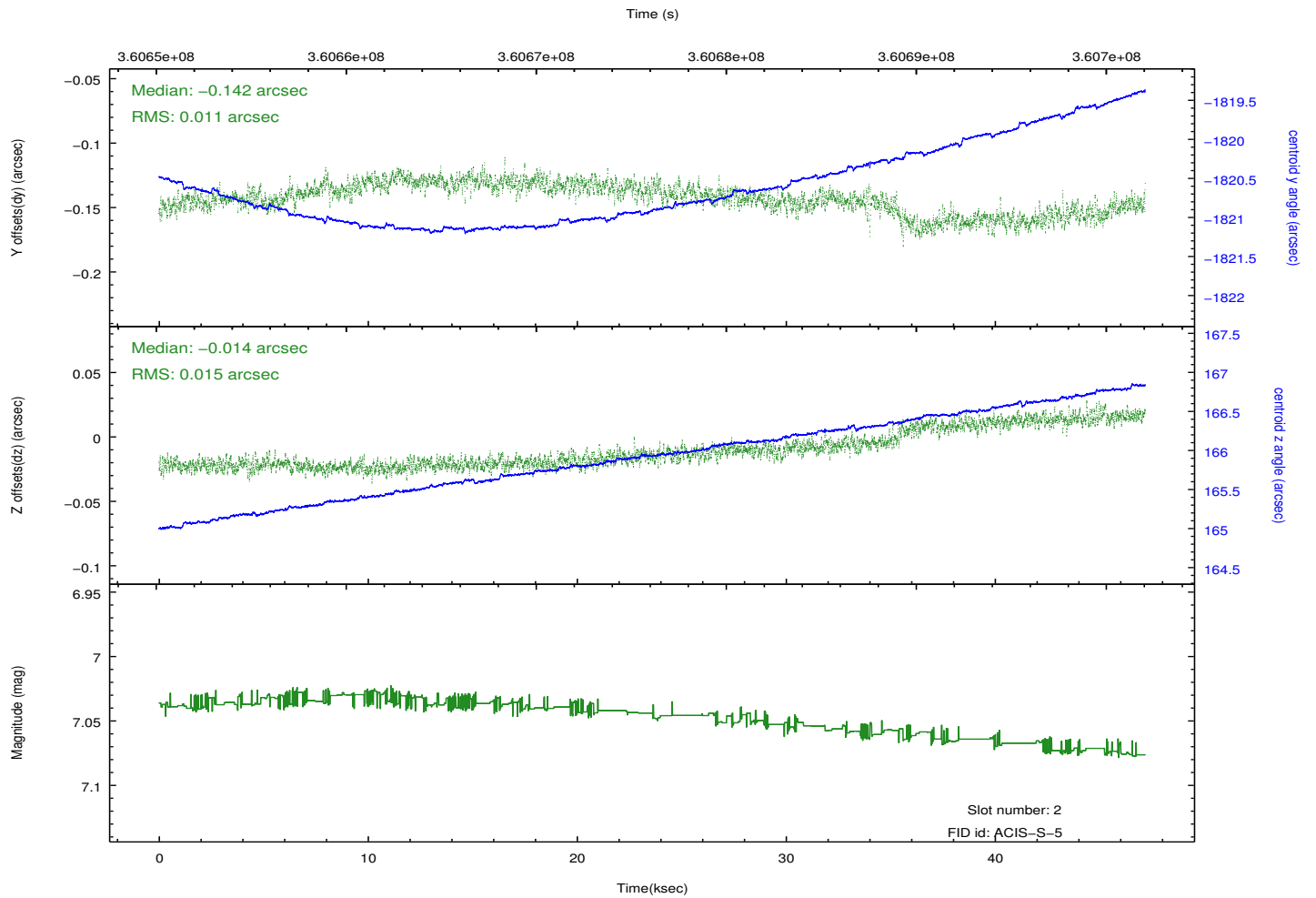
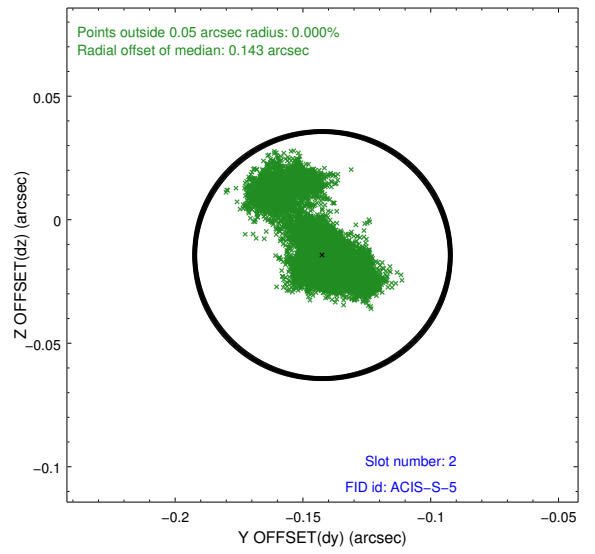
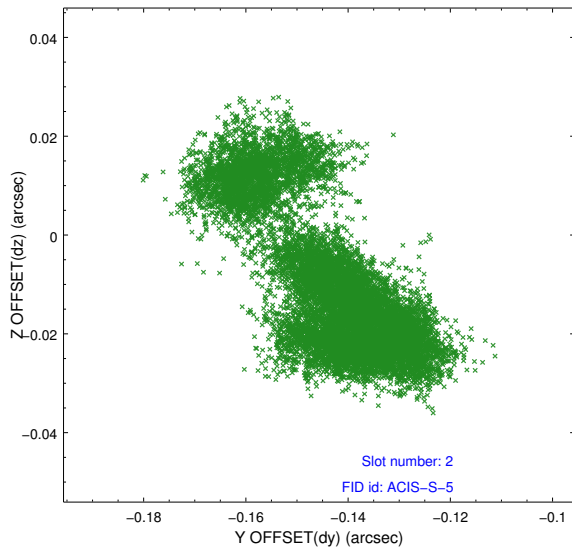
2.5.1 Slot 0



2.5.2 Slot 1



2.5.3 Slot 2



A Summary

A.1 Status

V&V Scientist	Jen Lauer
V&V Date (YYYY-MM-DD)	2012.06.12
V&V Edition	1
V&V Disposition and Status	OK
V&V Charge Time	47.1551998

A.2 Comments

Roll preference met.