

V&V Reference Report

L2 ASCDS Version : 8.4.4

Observation 10246 - L2 Version 2
Chandra X-Ray Center

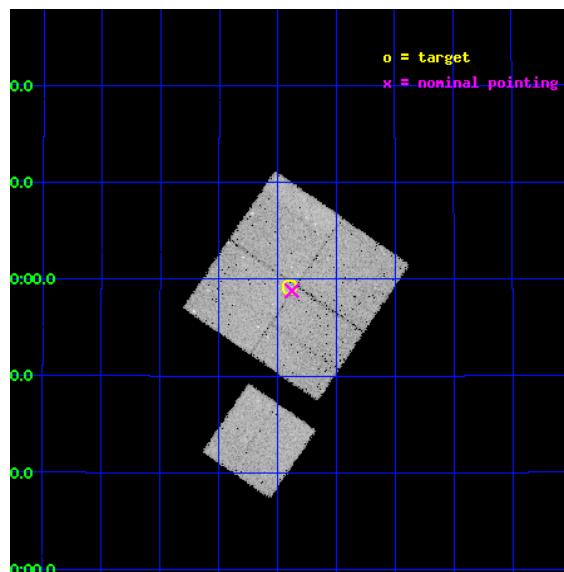
L2 Processing Date : Jun 2 2012

Contents

1	Front	2
2	OBI	3
2.1	OBI	3
2.1.1	Images	3
2.1.2	Bias	3
2.1.3	Parameters	4
2.1.4	Events	4
2.2	Compared Parameters	5
2.3	Aspect	6
2.4	Star Slots	9
2.4.1	Slot 3	9
2.4.2	Slot 4	10
2.4.3	Slot 5	11
2.4.4	Slot 6	12
2.4.5	Slot 7	13
2.5	FID Slots	14
2.5.1	Slot 0	14
2.5.2	Slot 1	15
2.5.3	Slot 2	16
A	Summary	17
A.1	Status	17
A.2	Comments	17

1 Front

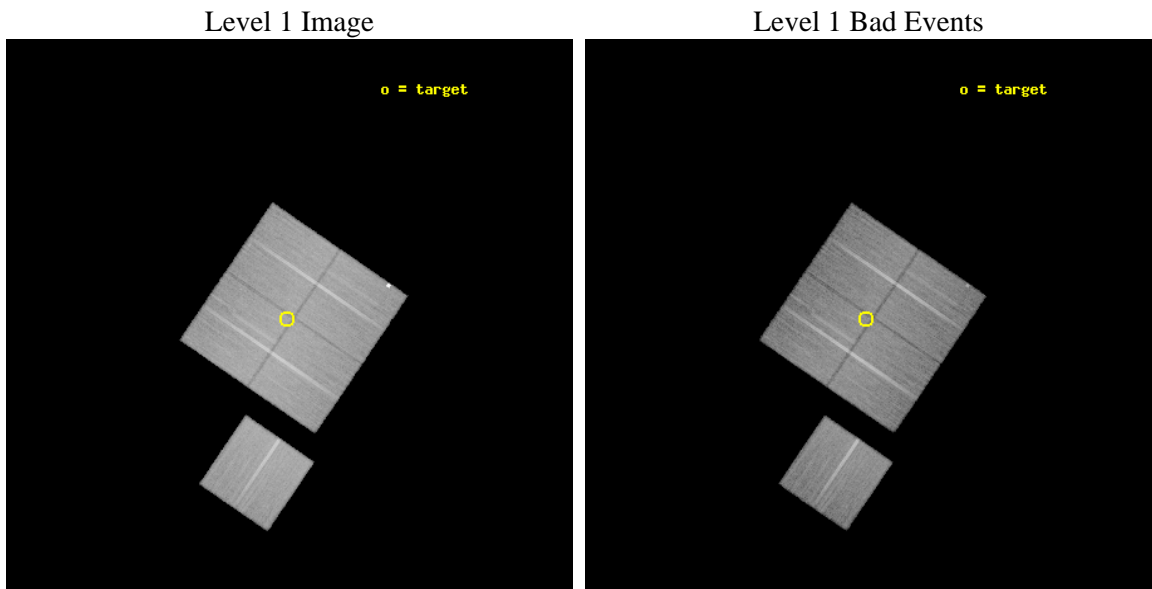
seq_num	701789	Sequence number
obs_id	10246	Observation id
title	The multi-faceted X-ray activity of low-redshift active galaxies	P
observer	Prof Mark Birkinshaw	Principal investigator
object	3C 236 W	Source name
dtcycle	0	
cycle	P	events from which exps? Prim/Second/Both
ra_targ	151.350833	Observer's specified target RA [deg]
dec_targ	34.9865	Observer's specified target Dec [deg]
ra_nom	151.34472000363	Nominal RA [deg]
dec_nom	34.980152793743	Nominal Dec [deg]
roll_nom	214.31173174731	Nominal Roll [deg]
revision	2	Processing version of data
ontime	29771.291668773	Sum of GTIs [s]
livetime	29382.307825814	Livetime [s]
ontime0	29764.886528134	Sum of GTIs [s]
ontime1	29761.786577702	Sum of GTIs [s]
ontime2	29771.250608802	Sum of GTIs [s]
ontime3	29771.291668773	Sum of GTIs [s]
ontime6	29764.845537722	Sum of GTIs [s]
l2events	111286	Number of level 2 events



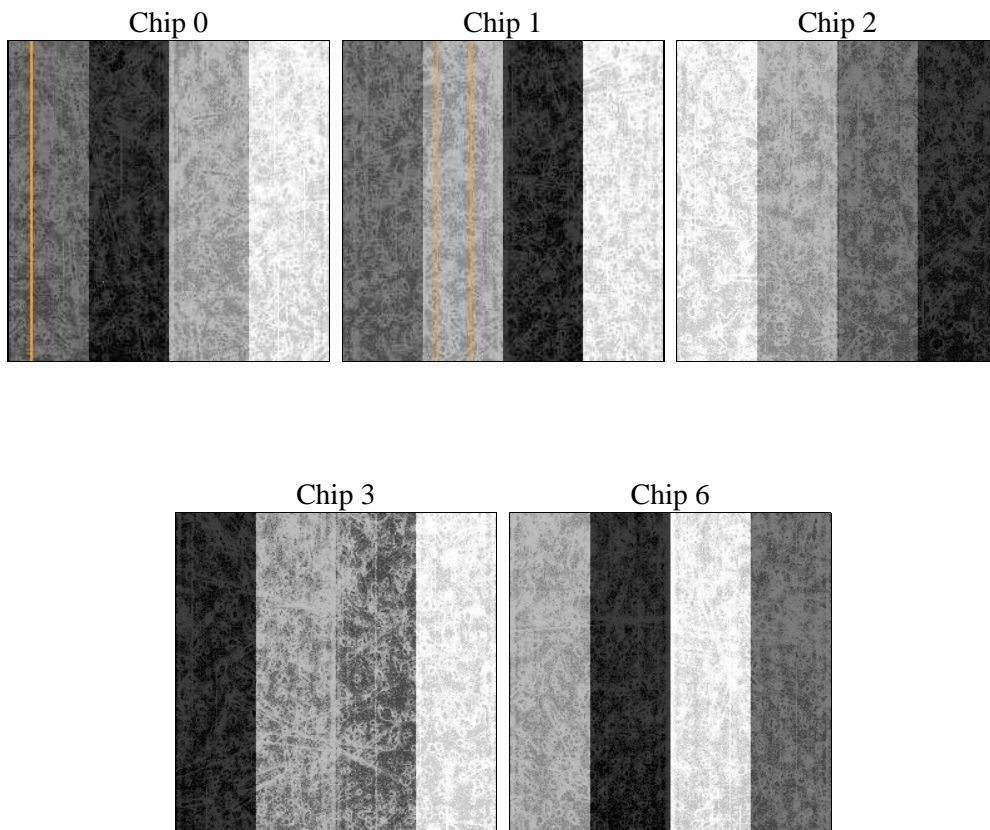
2 OBI

2.1 OBI

2.1.1 Images



2.1.2 Bias



2.1.3 Parameters

obi_num	0	Obi number	sched_exp_time	30000.000000	[s] Scheduled observation exposure time
ascdsver	8.4.4	Processing system revision	ontime	29771.291668773	Sum of GTIs [s]
caldbver	4.4.9	 	ontime0	29764.886528134	Sum of GTIs [s]
date	2012-06-02T02:09:31	Date and time of file creation	ontime1	29761.786577702	Sum of GTIs [s]
revision	2	Processing version of data	ontime2	29771.250608802	Sum of GTIs [s]
			ontime3	29771.291668773	Sum of GTIs [s]
			ontime6	29764.845537722	Sum of GTIs [s]
			l1events	1281890	Number of level 1 events

2.1.4 Events

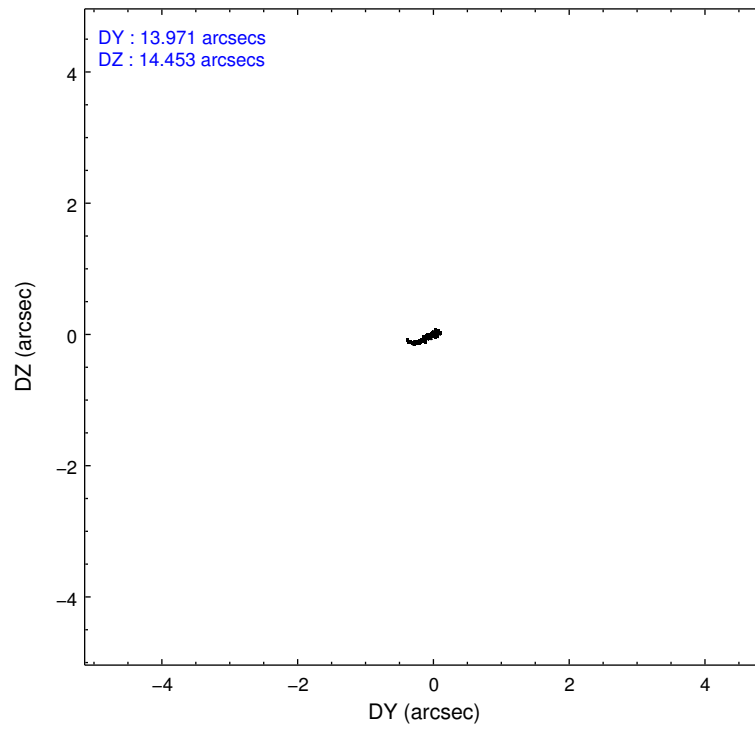
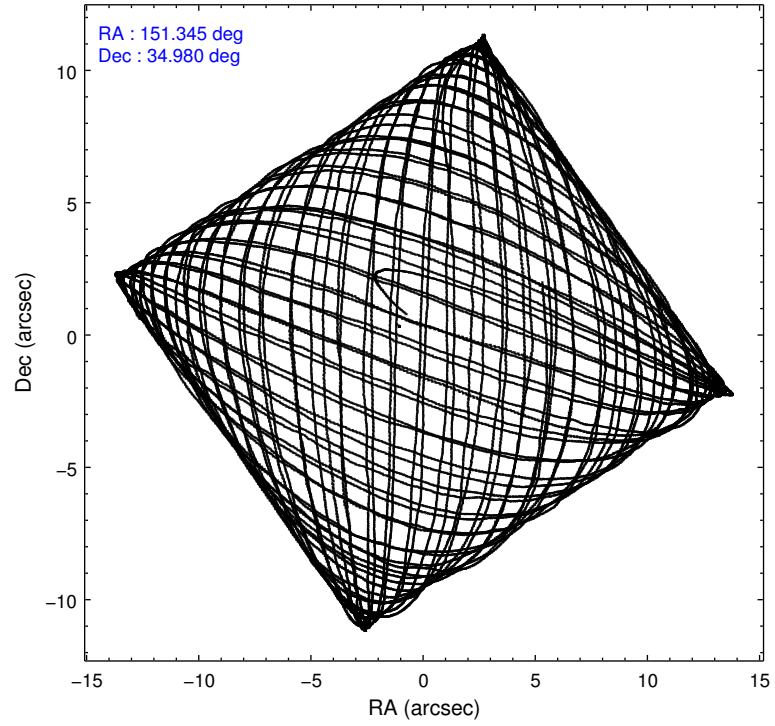
	ccd 0	ccd 1	ccd 2	ccd 3	ccd 6
level 1 events	250189	245920	266447	259784	259550
rejected events	215058	216563	240771	234381	232801
rejected %	85%	88%	90%	90%	89%

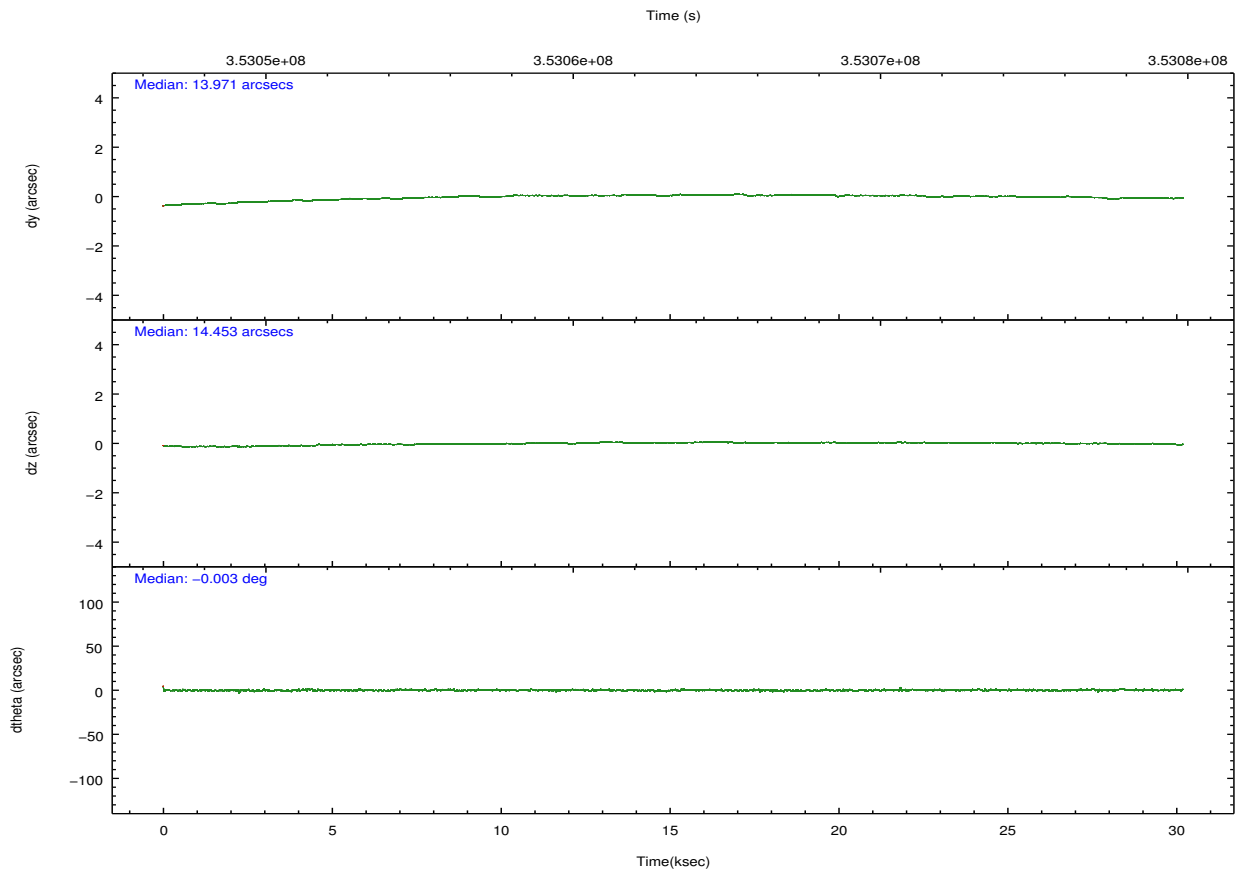
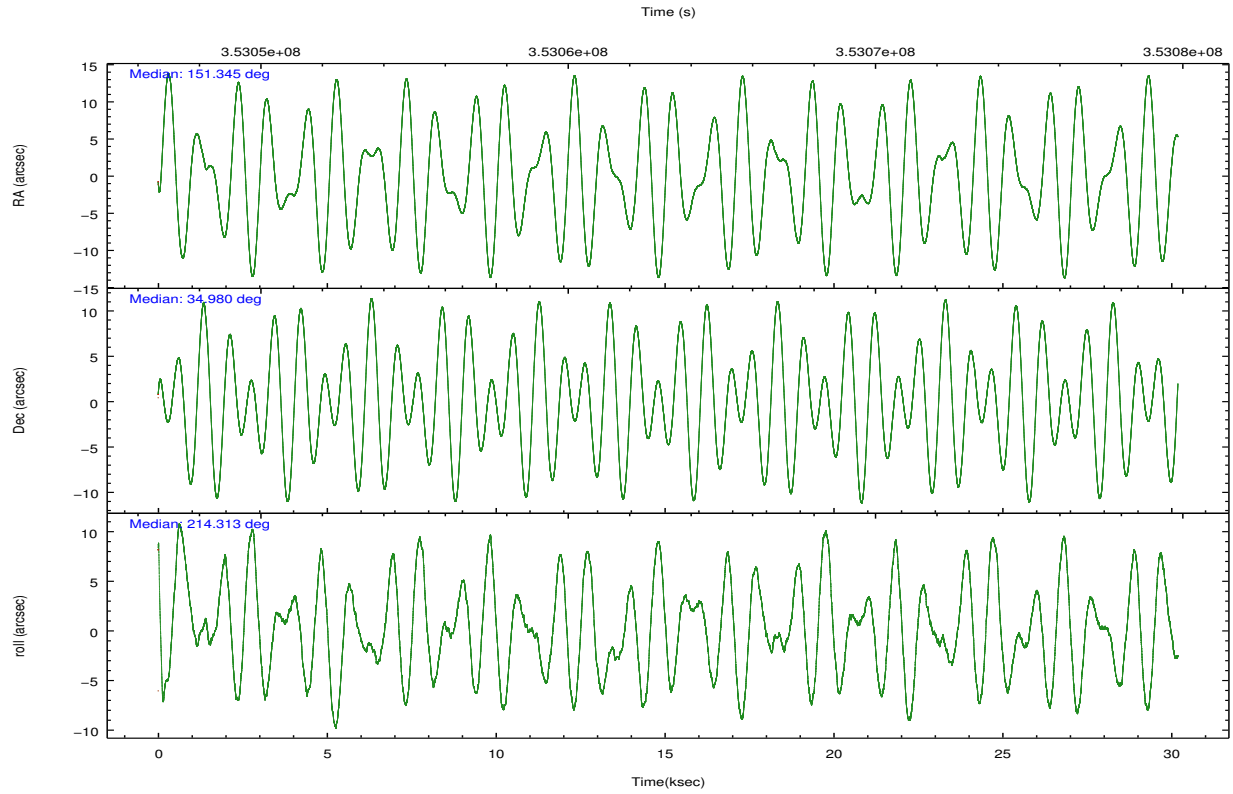
	ccd 0	ccd 1	ccd 2	ccd 3	ccd 6
grade 0 events	17716	10814	8911	9275	9351
	7%	4%	3%	3%	3%
grade 1 events	375	124	130	164	114
	0%	0%	0%	0%	0%
grade 2 events	6555	6716	6367	5485	5964
	2%	2%	2%	2%	2%
grade 3 events	2893	2996	2770	2817	2928
	1%	1%	1%	1%	1%
grade 4 events	2766	2975	2709	2725	2761
	1%	1%	1%	1%	1%
grade 5 events	9612	10140	9052	10609	10568
	3%	4%	3%	4%	4%
grade 6 events	5204	5861	4931	5109	5752
	2%	2%	1%	1%	2%
grade 7 events	205068	206294	231577	223600	222112
	81%	83%	86%	86%	85%

2.2 Compared Parameters

Parameter	Planned	Actual	Parameter	Planned	Actual
Instrument	ACIS	ACIS	Obspar format version number	7	7
Detector	ACIS-01236	ACIS-01236	Obspar file type	PREDICTED	ACTUAL
Grating	NONE	NONE	Obspar update status	NONE	UPDATED
Data mode	VFAINT	VFAINT	CCD I0 on	Y	Y
Observation mode	POINTING	POINTING	CCD I1 on	Y	Y
[deg] Pointing RA	151.359140	151.3447200036297	CCD I2 on	Y	Y
[deg] Pointing Dec	35.004998	34.98015279374285	CCD I3 on	Y	Y
[deg] Pointing Roll	214.094775	214.3117317473136	CCD S0 on	N	N
[mm] SIM focus pos	-0.782348	-0.7809083437167272	CCD S1 on	N	N
[mm] SIM defocus	0	0.001439871863259334	CCD S2 on	O1	Y
[mm] SIM translation stage pos	-233.592463	-233.5874344608287	CCD S3 on	N	N
[mm] SIM translation stage offset	0	-0.005018542100998502	CCD S4 on	N	N
[s] Observation start time (MET)	353048343.184000	353047359.43967	CCD S5 on	N	N
Observation start date	2009-03-10T04:57:57	2009-03-10T04:42:39	Number of optional ACIS chips dropped	0	0
[s] Observation end time (MET)	353078343.184000	353079010.92874	On-chip summing requested	N	N
Observation end date	2009-03-10T13:17:57	2009-03-10T13:30:10	Subarray requested	NONE	NONE
Read mode	TIMED	TIMED	Alternating exposures requested	N	N
			[s] Primary exposure time	0.000000	3.1

2.3 Aspect





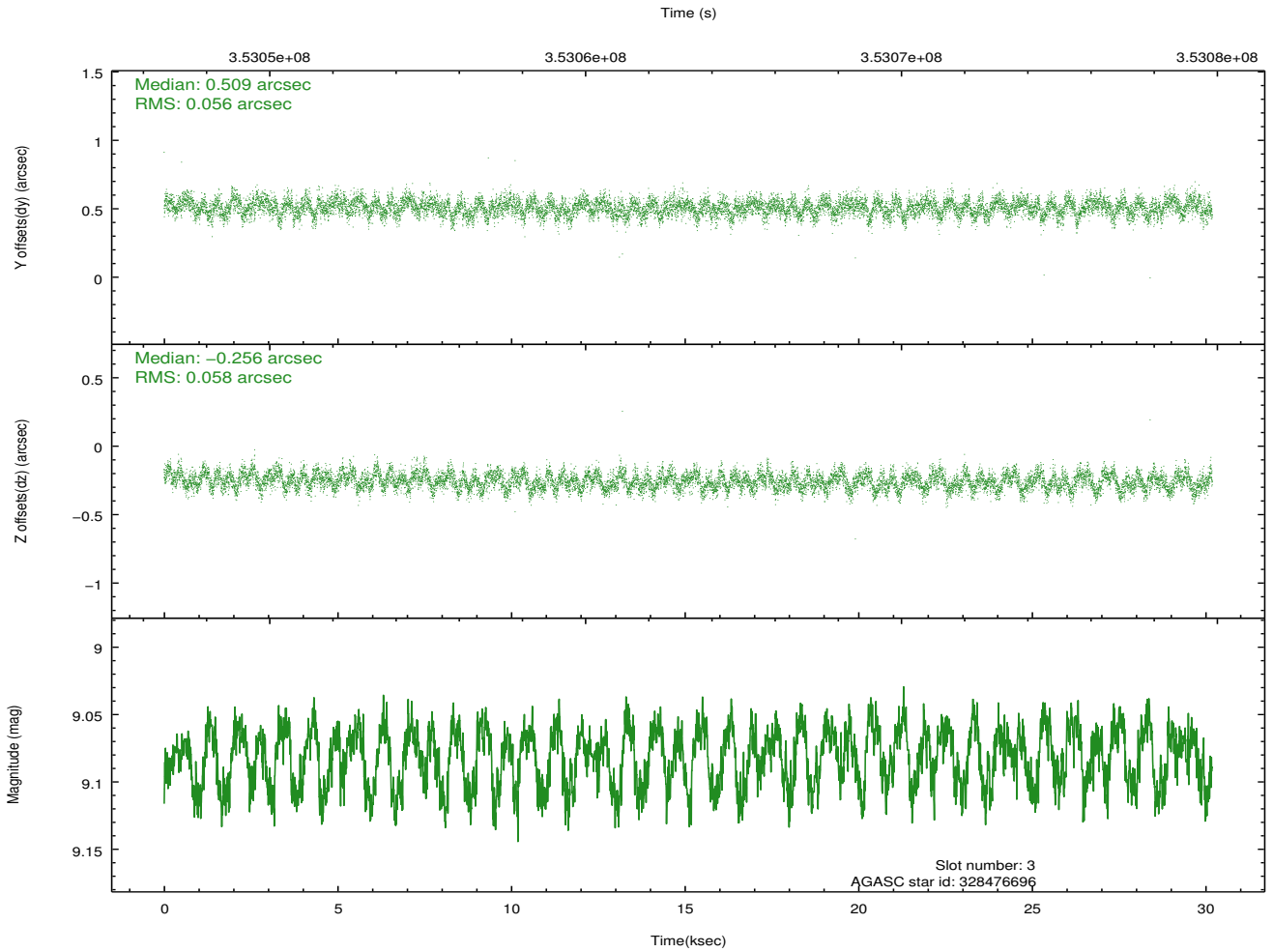
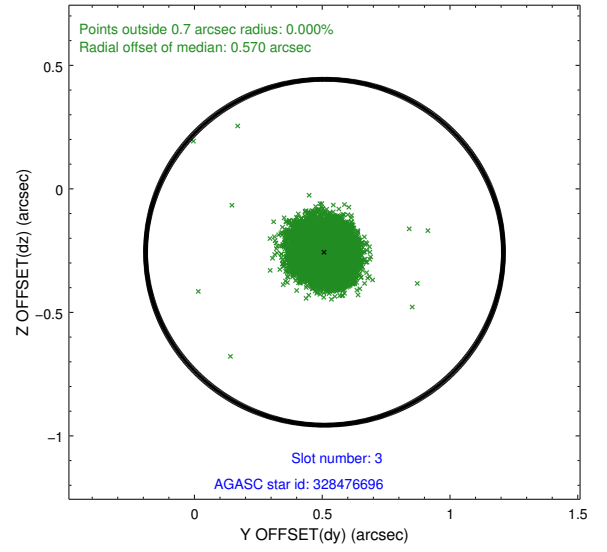
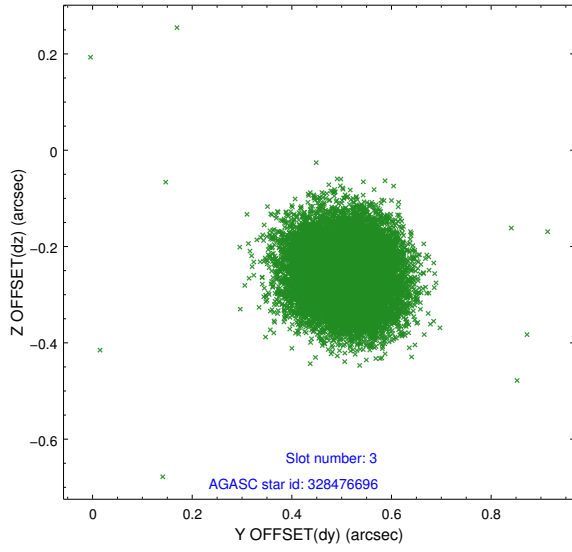
Slot Statistics

slot	status	id	mag	n_pts	med_dy	med_dz	dr1	dr2	ra	dec	mean_y	mean_z
0	FID	ACIS-I-1	7.05	7364	-0.011	0.024	0.010	0.020	0.000000	0.000000	925.56	-837.98
1	FID	ACIS-I-4	6.97	7360	0.153	0.012	0.011	0.020	0.000000	0.000000	2145.77	1061.79
2	FID	ACIS-I-5	7.04	7363	-0.241	0.034	0.011	0.022	0.000000	0.000000	-1822.61	1059.69
3	GUIDE	328476696	9.08	14709	0.509	-0.256	0.086	0.136	151.077785	34.497857	1715.07	1042.84
4	GUIDE	328476960	7.82	14722	-0.503	0.098	0.067	0.105	151.402383	34.690064	529.96	1010.83
5	GUIDE	328859664	7.16	14726	-0.101	-0.008	0.070	0.115	151.454409	35.002360	-227.00	165.44
6	GUIDE	328860432	9.16	14685	-0.049	0.137	0.093	0.151	151.141670	35.103376	332.33	-652.83
7	GUIDE	328864064	9.80	14692	0.156	0.029	0.140	0.227	150.742245	35.449857	597.89	-2344.90

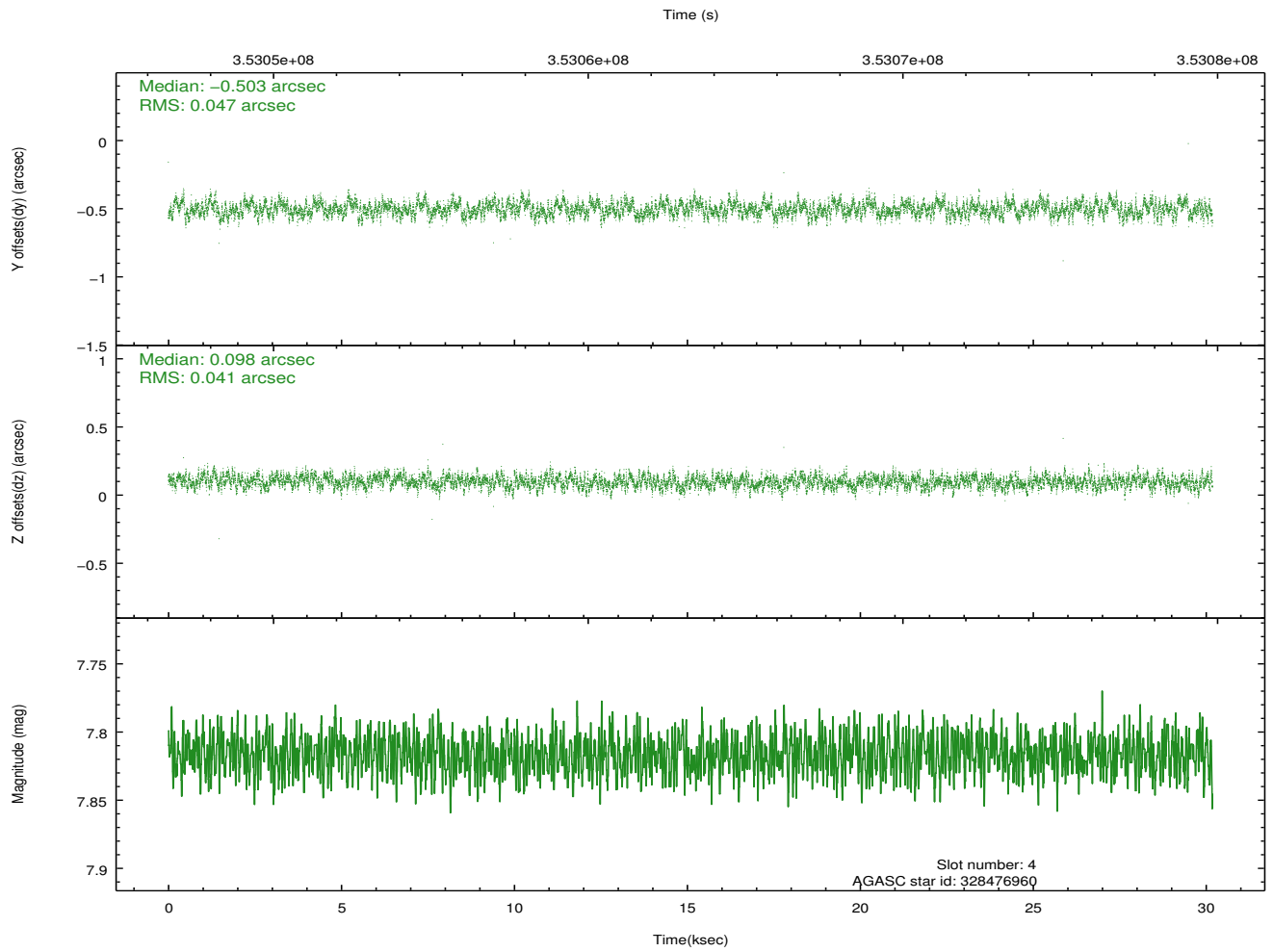
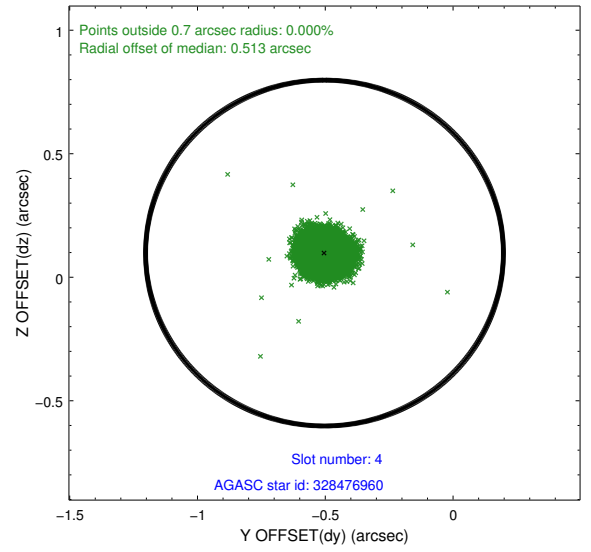
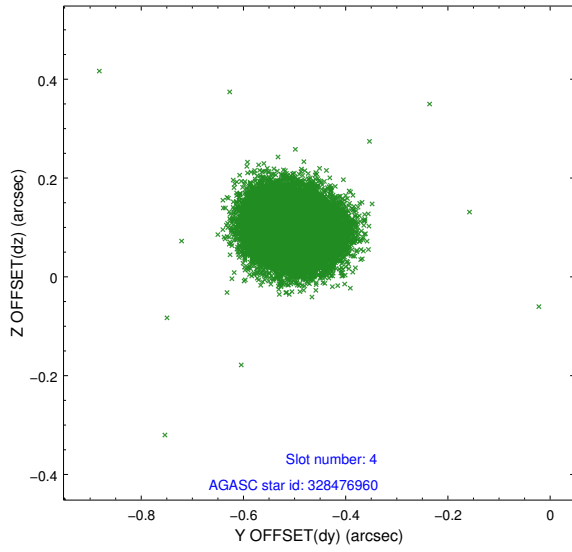
∞

2.4 Star Slots

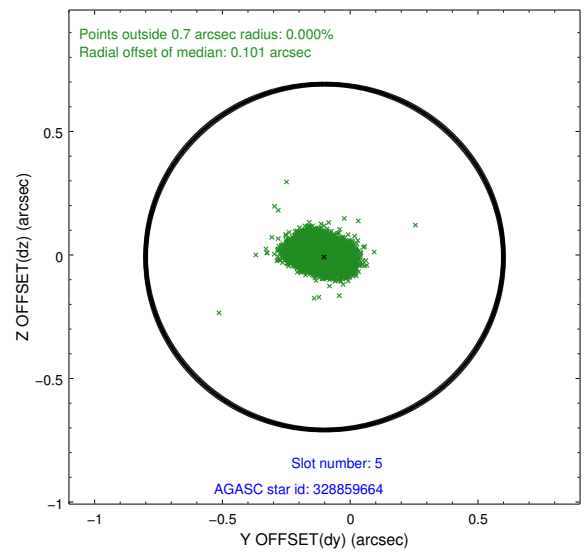
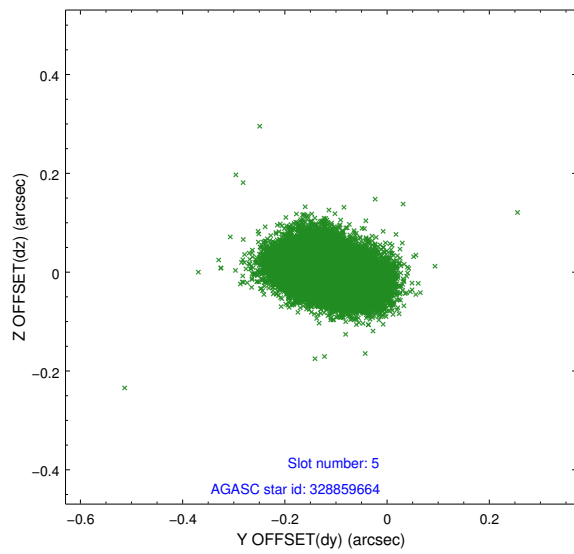
2.4.1 Slot 3



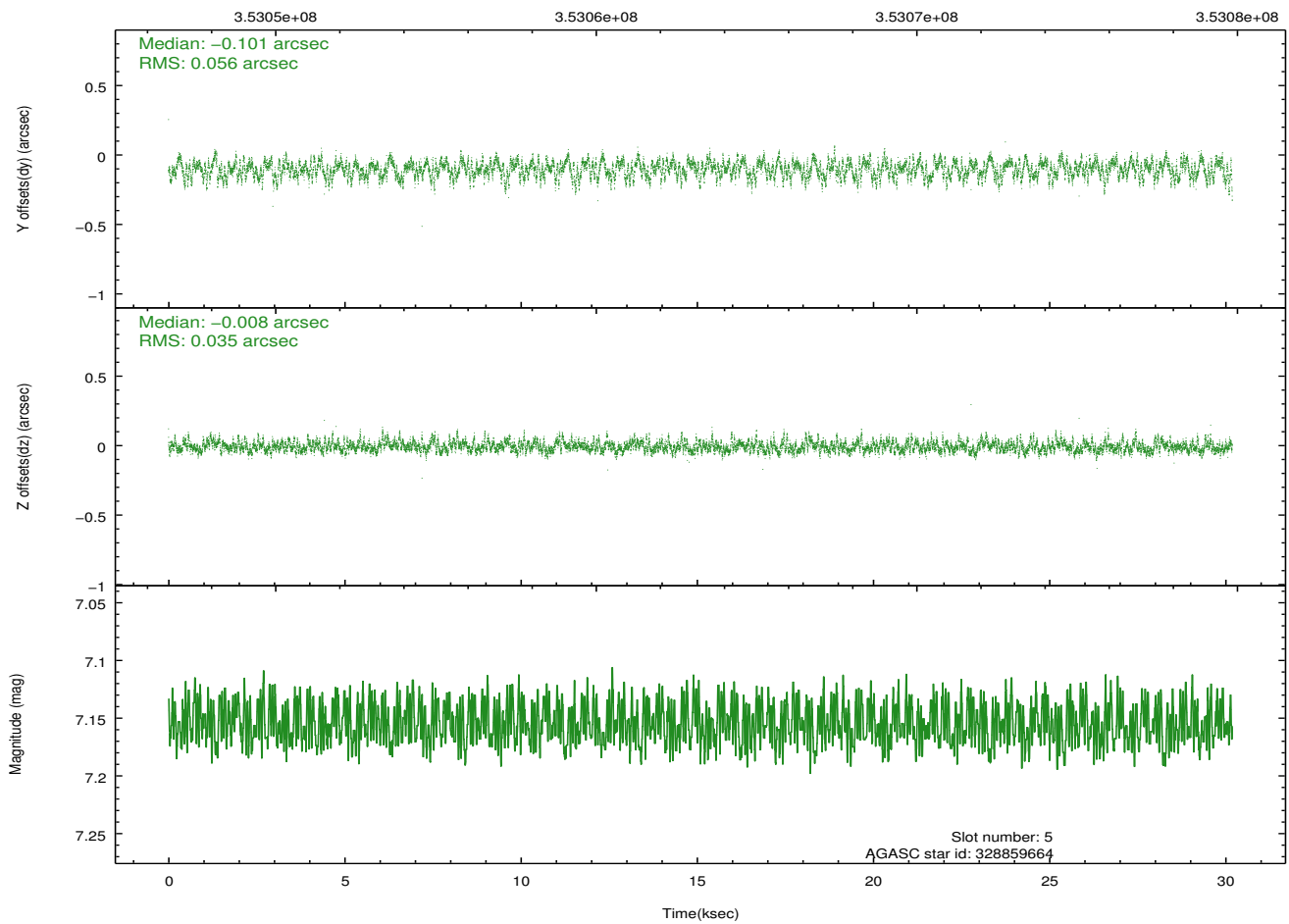
2.4.2 Slot 4



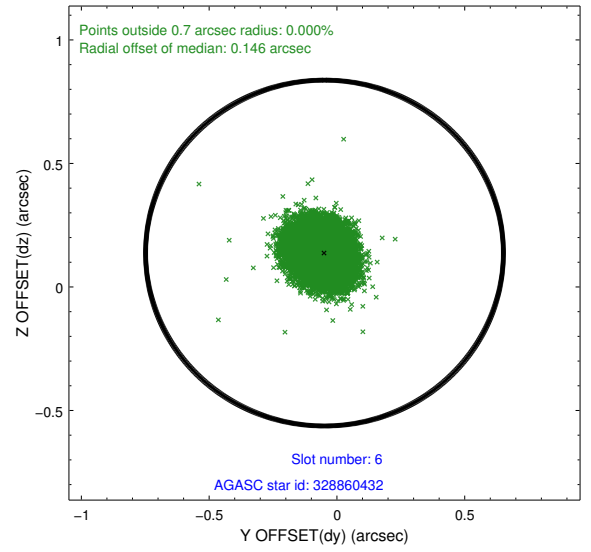
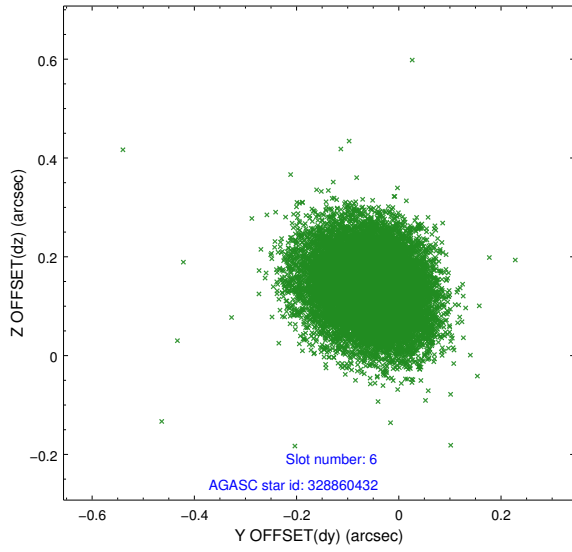
2.4.3 Slot 5



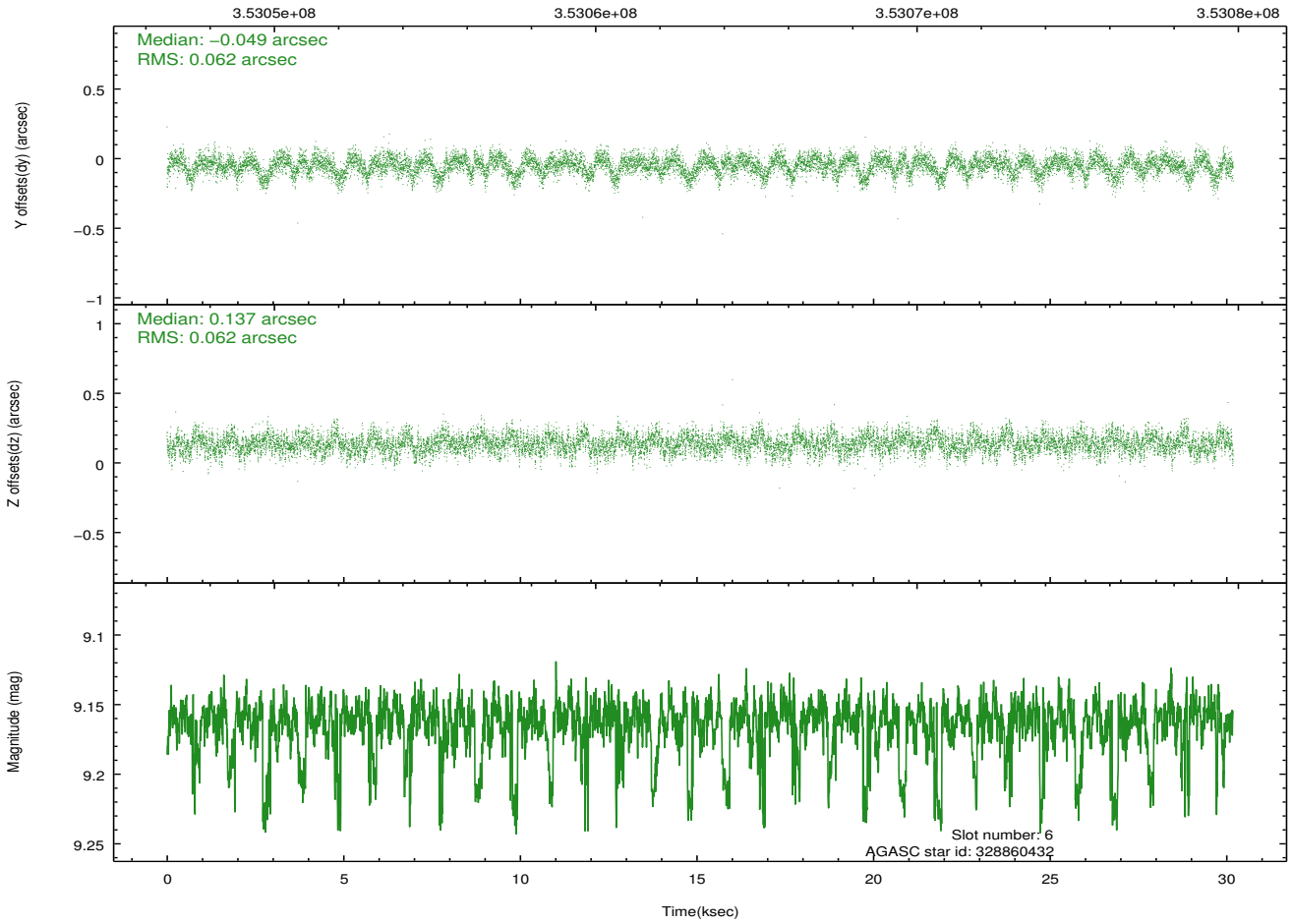
Time (s)



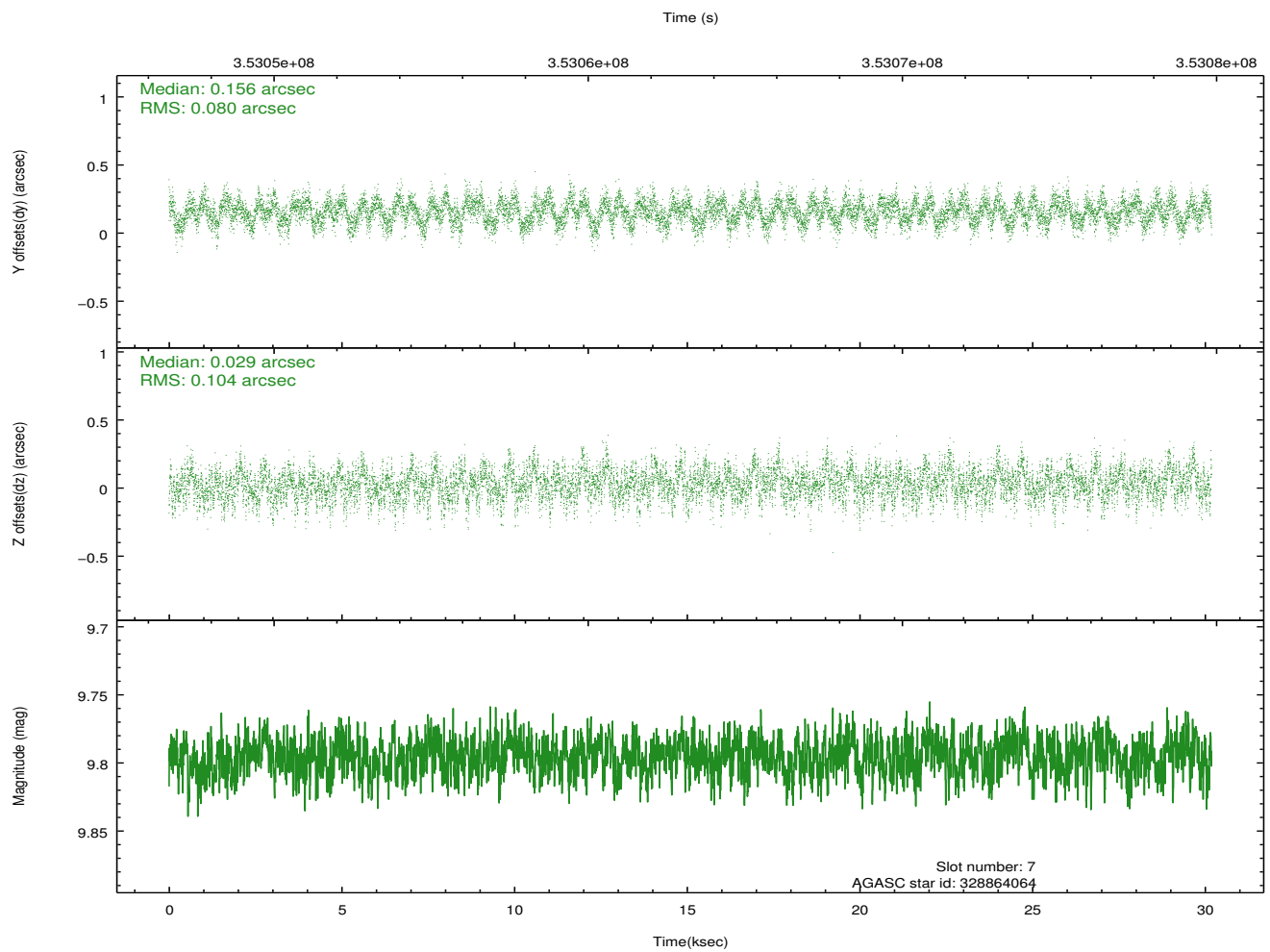
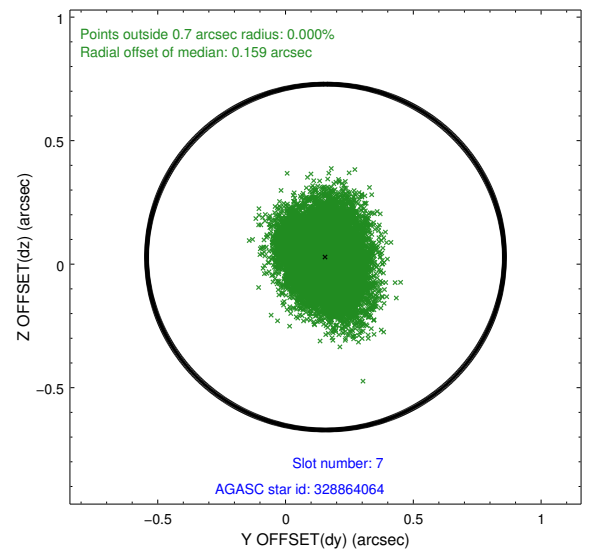
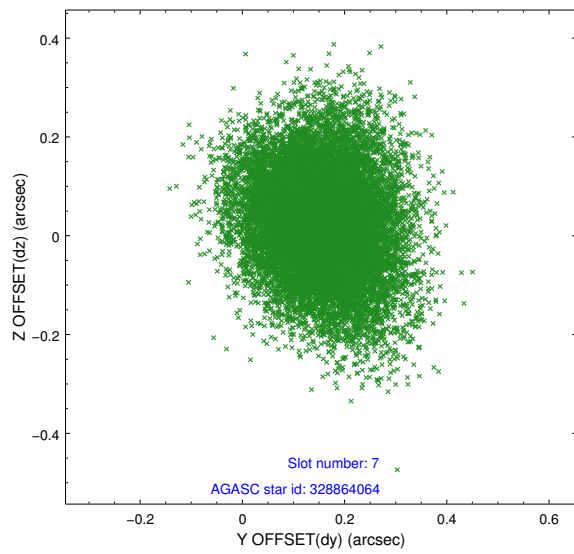
2.4.4 Slot 6



Time (s)

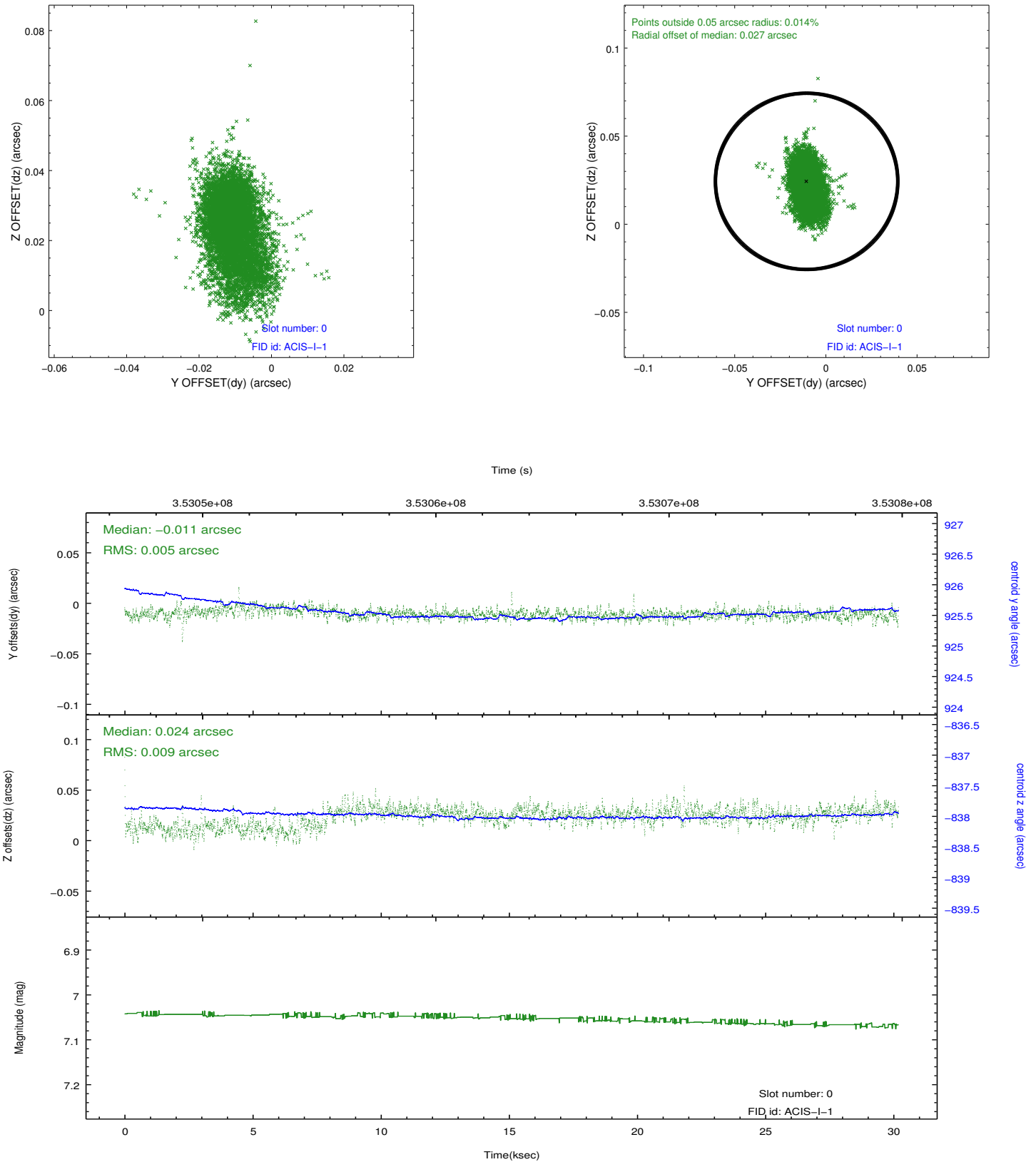


2.4.5 Slot 7

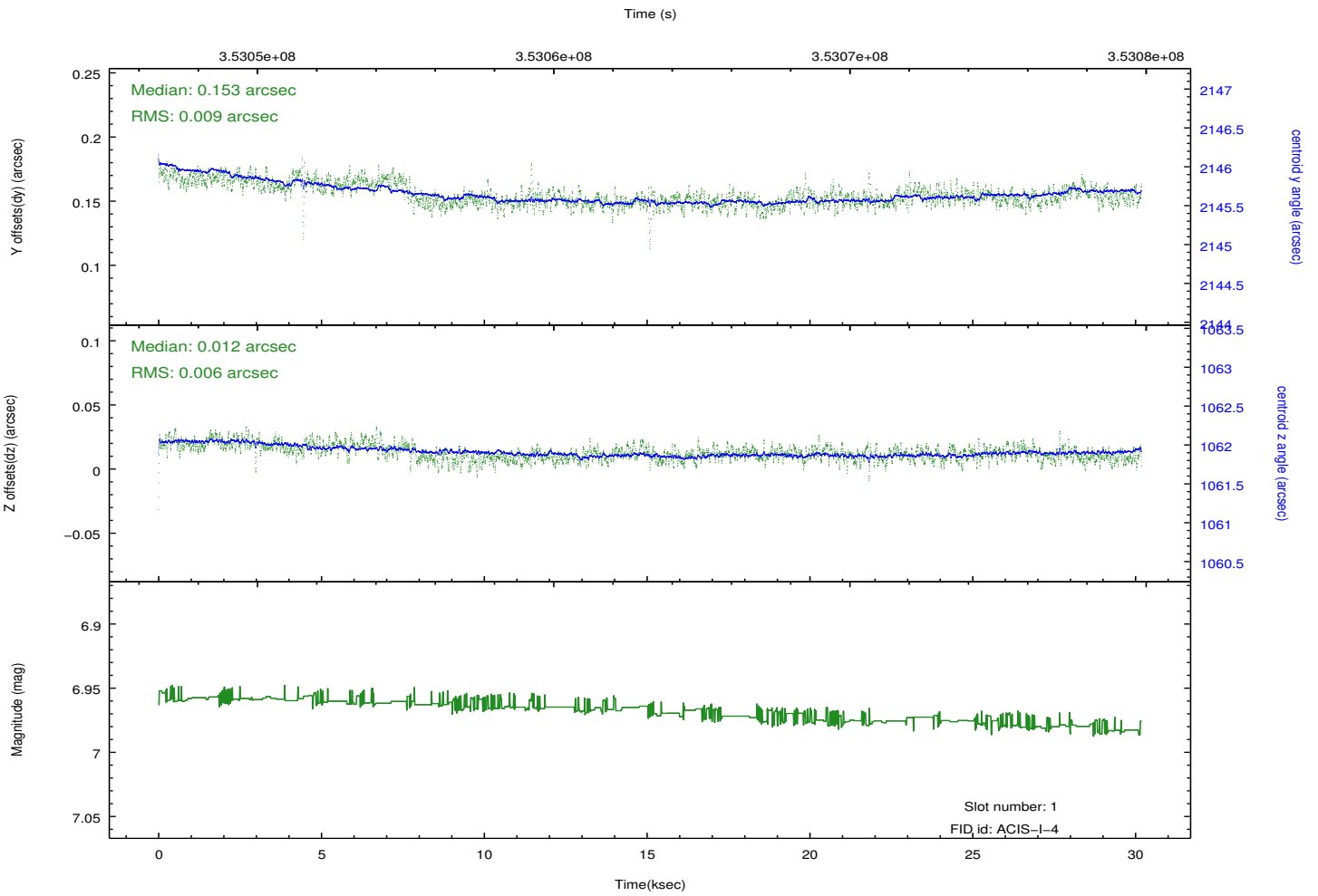
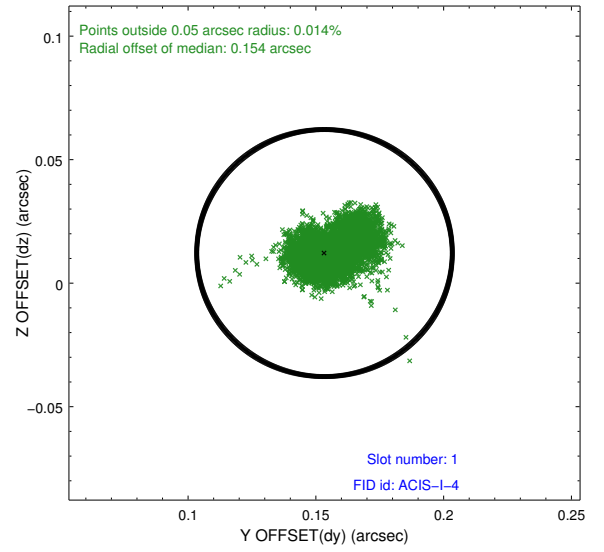
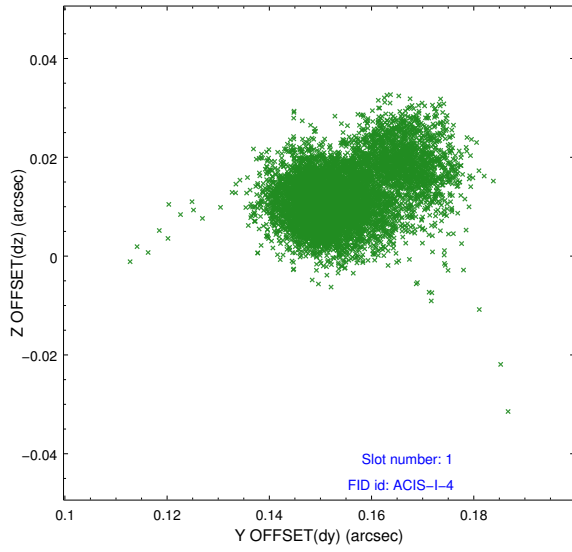


2.5 FID Slots

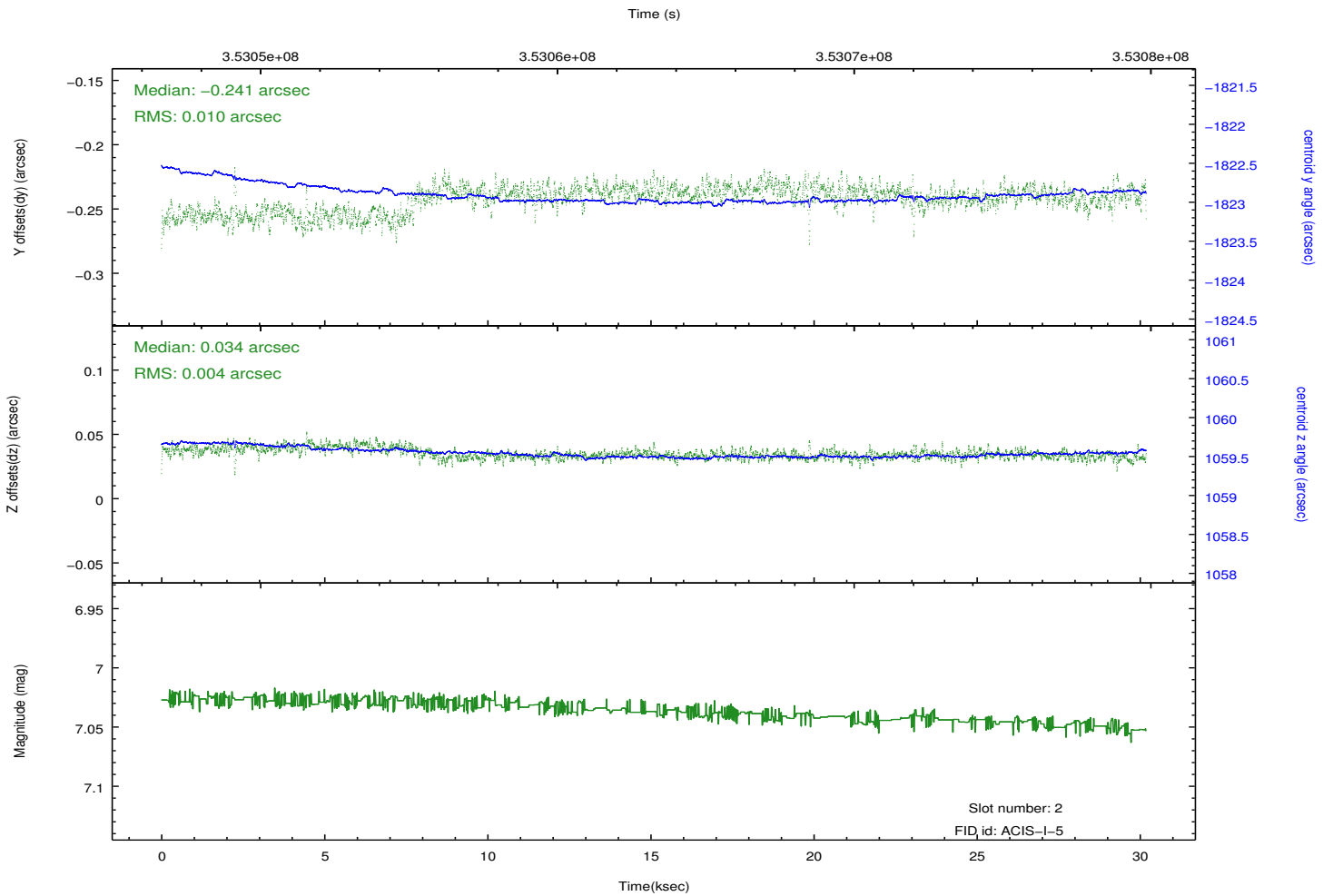
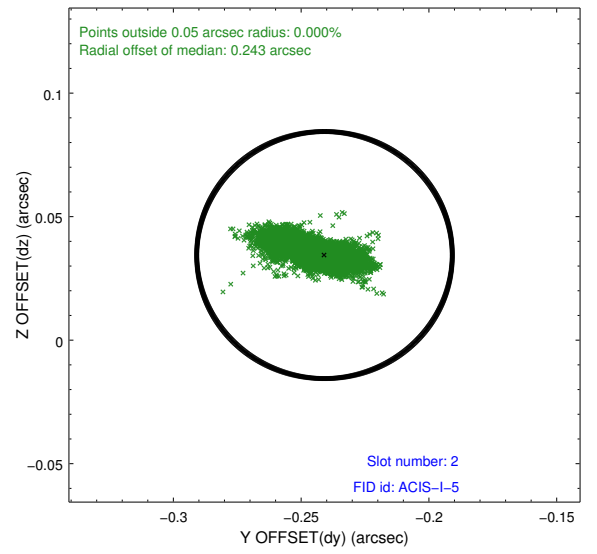
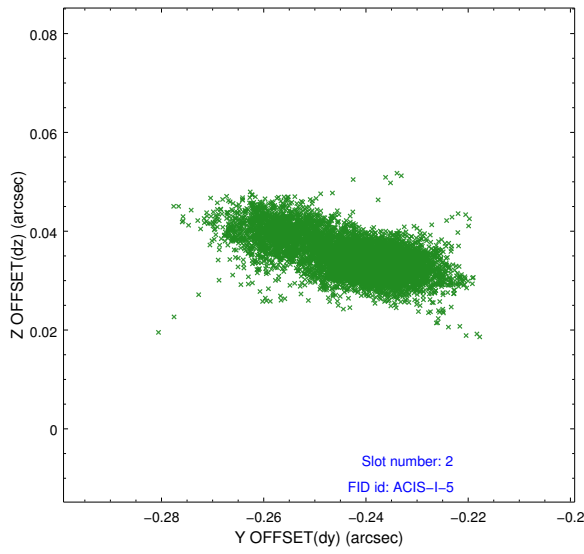
2.5.1 Slot 0



2.5.2 Slot 1



2.5.3 Slot 2



A Summary

A.1 Status

V&V Scientist	Jen Lauer
V&V Date (YYYY-MM-DD)	2012.06.07
V&V Edition	1
V&V Disposition and Status	OK
V&V Charge Time	29.7724002

A.2 Comments

Joint proposal with HST.