

V&V Reference Report

L2 ASCDS Version : 8.4.5

Observation 10456 - L2 Version 2
Chandra X-Ray Center

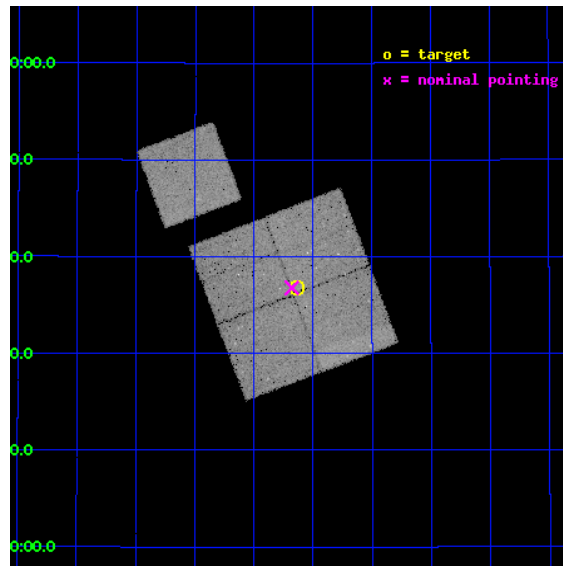
L2 Processing Date : Jun 15 2012

Contents

1	Front	2
2	OBI	3
2.1	OBI	3
2.1.1	Images	3
2.1.2	Bias	3
2.1.3	Parameters	4
2.1.4	Events	4
2.2	Compared Parameters	5
2.3	Aspect	6
2.4	Star Slots	9
2.4.1	Slot 3	9
2.4.2	Slot 4	10
2.4.3	Slot 5	11
2.4.4	Slot 6	12
2.4.5	Slot 7	13
2.5	FID Slots	14
2.5.1	Slot 0	14
2.5.2	Slot 1	15
2.5.3	Slot 2	16
A	Summary	17
A.1	Status	17
A.2	Comments	17

1 Front

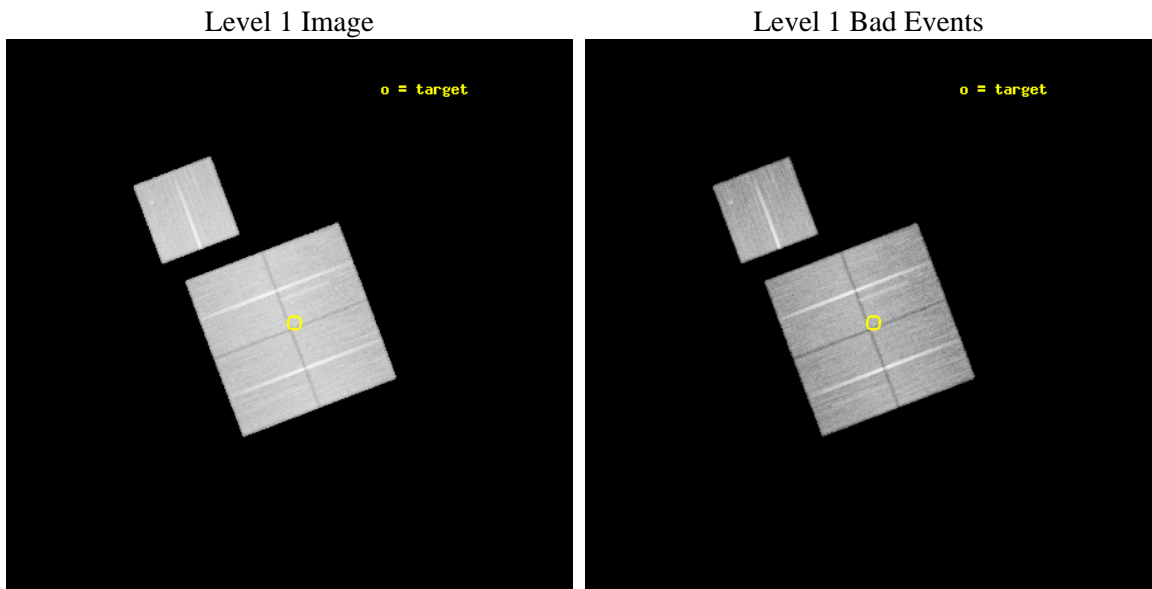
seq_num	800817	Sequence number
obs_id	10456	Observation id
title	The Role of AGN in Massive Galaxy Formation	Proposal title
observer	Dr. Spencer Stanford	Principal investigator
object	ISCS1029	Source name
dtcycle	0	
cycle	P	events from which exps? Prim/Second/Both
ra_targ	218.16	Observer's specified target RA [deg]
dec_targ	34.613611	Observer's specified target Dec [deg]
ra_nom	218.16980836992	Nominal RA [deg]
dec_nom	34.613134474579	Nominal Dec [deg]
roll_nom	339.26045703761	Nominal Roll [deg]
revision	2	Processing version of data
ontime	32220.853874564	Sum of GTIs [s]
livetime	31799.864698045	Livetime [s]
ontime0	32214.448803902	Sum of GTIs [s]
ontime1	32217.63085407	Sum of GTIs [s]
ontime2	32220.812834561	Sum of GTIs [s]
ontime3	32220.853874564	Sum of GTIs [s]
ontime6	32220.689714551	Sum of GTIs [s]
l2events	123987	Number of level 2 events



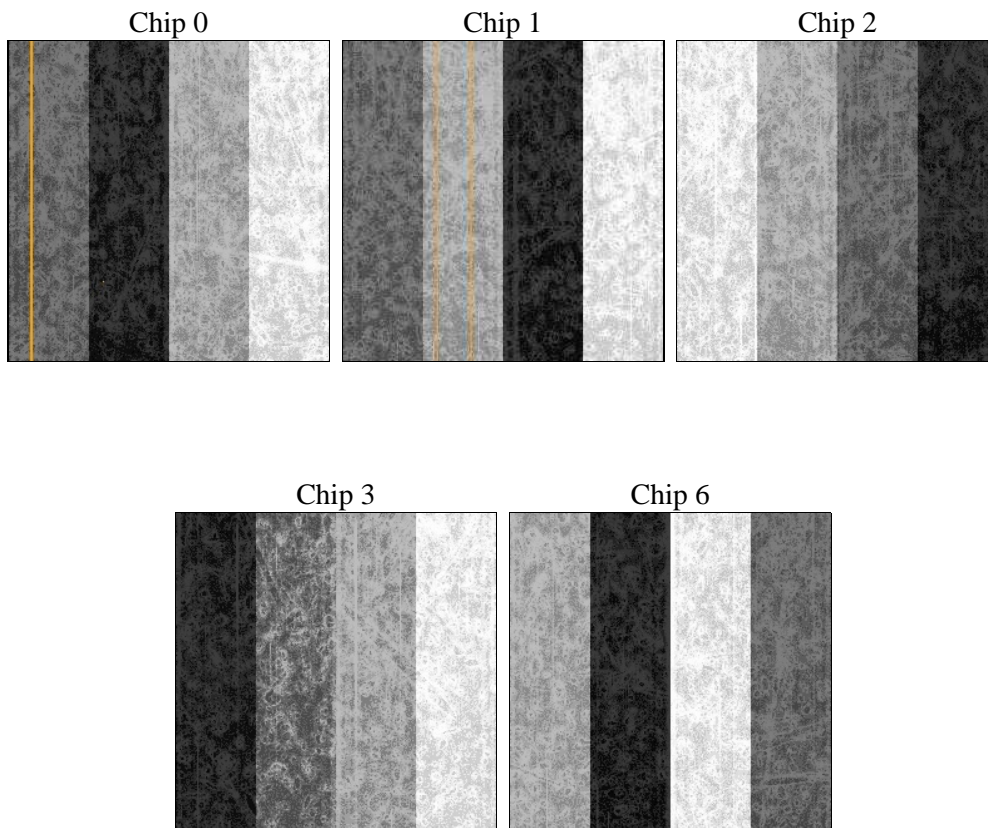
2 OBI

2.1 OBI

2.1.1 Images



2.1.2 Bias



2.1.3 Parameters

obi_num	0	Obi number	sched_exp_time	32000.000000	[s] Scheduled observation exposure time
ascdsver	8.4.5	Processing system revision	ontime	32220.853874564	Sum of GTIs [s]
caldbver	4.4.10	 	ontime0	32214.448803902	Sum of GTIs [s]
date	2012-06-15T14:43:10	Date and time of file creation	ontime1	32217.63085407	Sum of GTIs [s]
revision	2	Processing version of data	ontime2	32220.812834561	Sum of GTIs [s]
			ontime3	32220.853874564	Sum of GTIs [s]
			ontime6	32220.689714551	Sum of GTIs [s]
			l1events	1404303	Number of level 1 events

2.1.4 Events

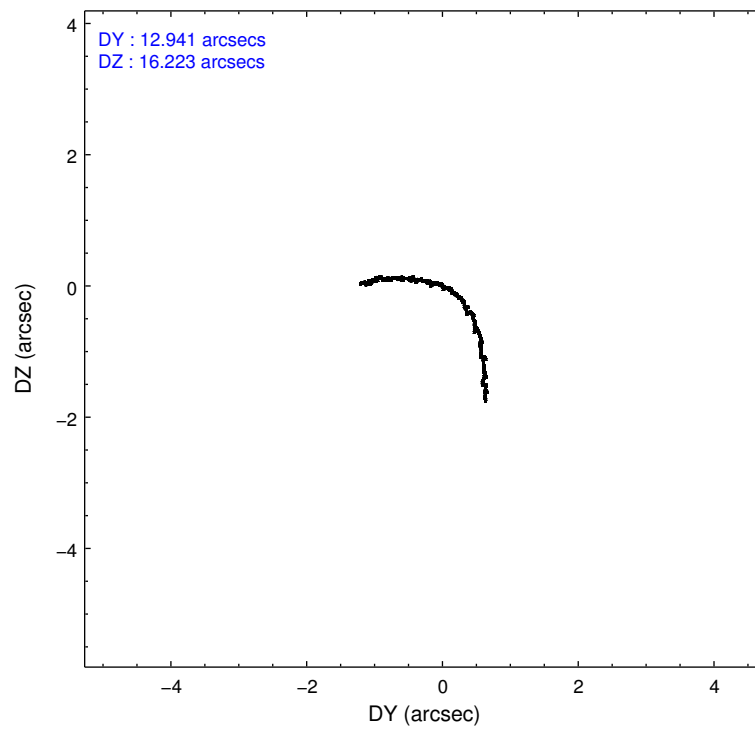
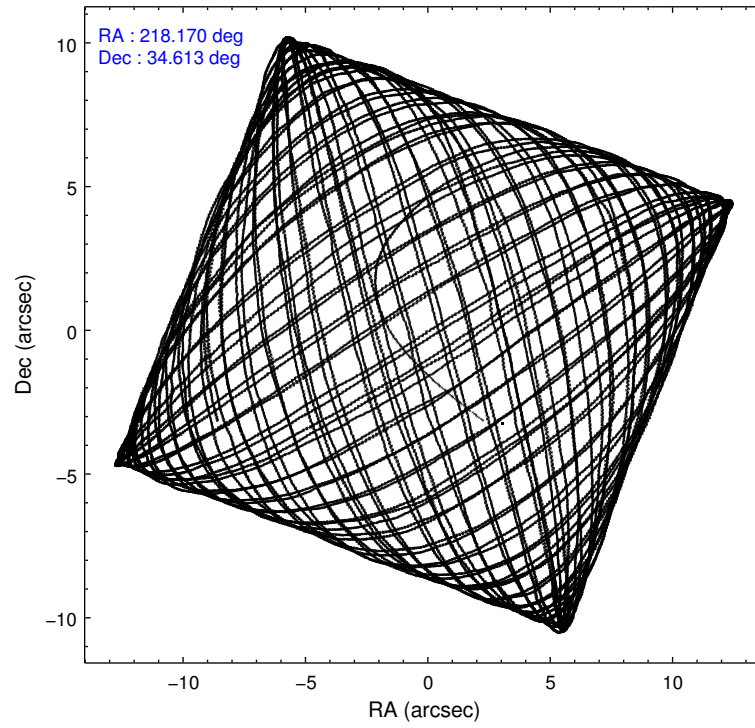
	ccd 0	ccd 1	ccd 2	ccd 3	ccd 6
level 1 events	269731	270790	294925	281153	287704
rejected events	240187	237546	266213	252792	257984
rejected %	89%	87%	90%	89%	89%

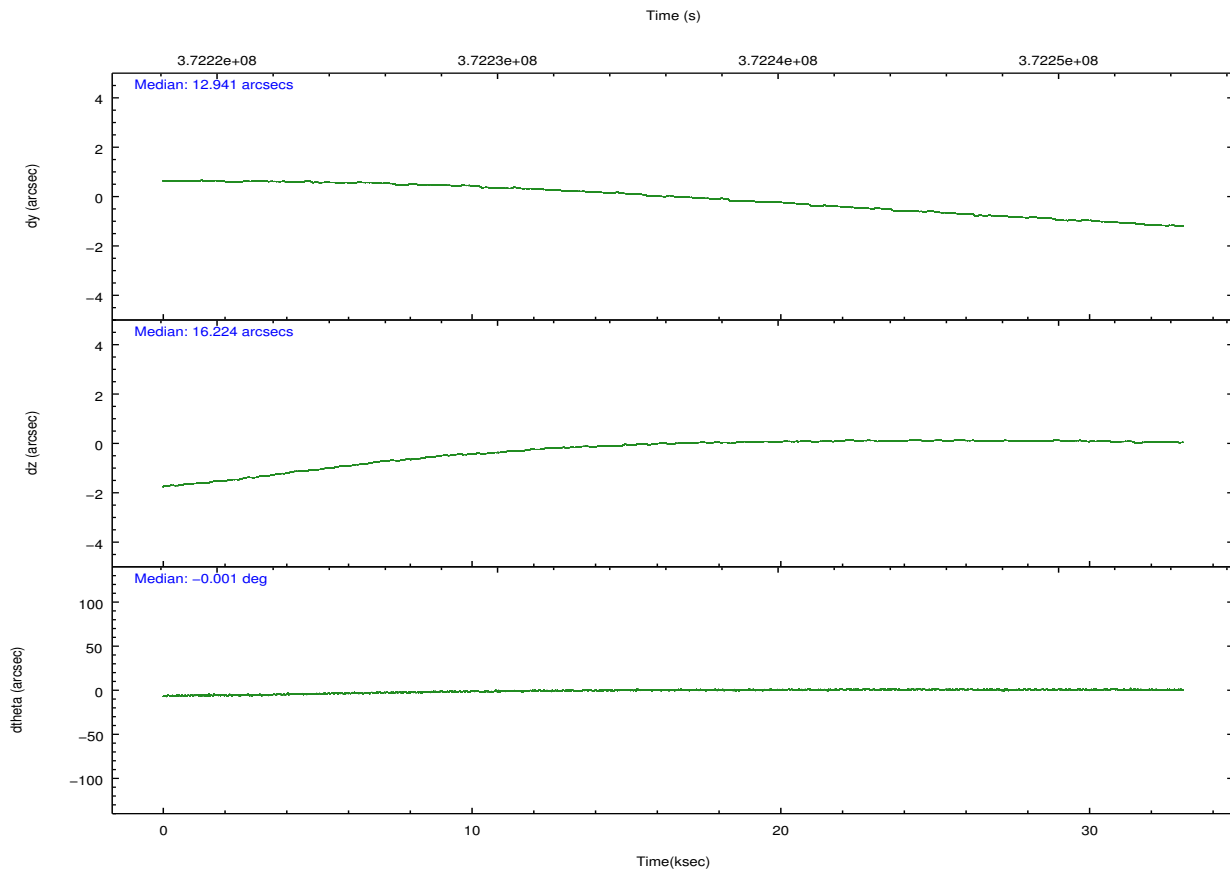
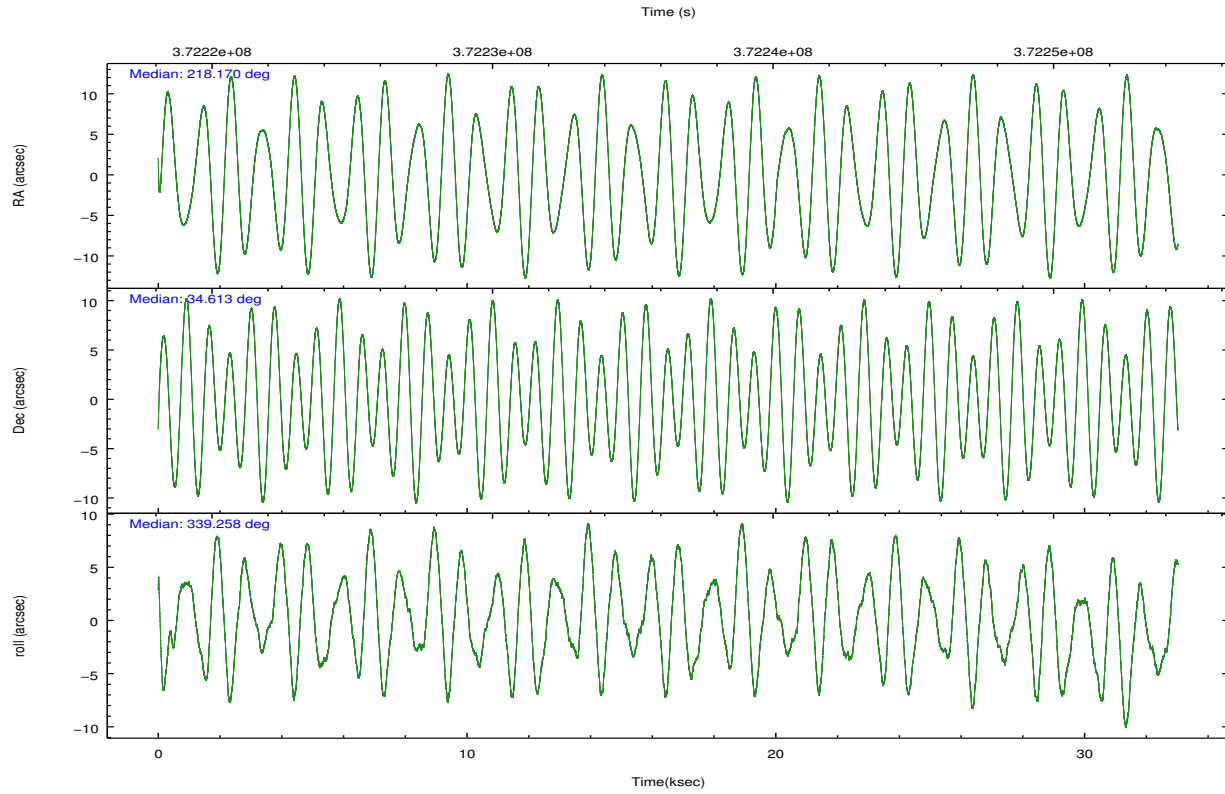
	ccd 0	ccd 1	ccd 2	ccd 3	ccd 6
grade 0 events	10186	11923	10447	10412	10133
	3%	4%	3%	3%	3%
grade 1 events	142	141	152	174	217
	0%	0%	0%	0%	0%
grade 2 events	7360	7609	7117	6318	6700
	2%	2%	2%	2%	2%
grade 3 events	3198	3518	2850	3002	3303
	1%	1%	0%	1%	1%
grade 4 events	3102	3447	3022	2985	3208
	1%	1%	1%	1%	1%
grade 5 events	10417	11313	10004	12121	11576
	3%	4%	3%	4%	4%
grade 6 events	5709	6755	5284	5651	6381
	2%	2%	1%	2%	2%
grade 7 events	229617	226084	256049	240490	246186
	85%	83%	86%	85%	85%

2.2 Compared Parameters

Parameter	Planned	Actual	Parameter	Planned	Actual
Instrument	ACIS	ACIS	Obspar format version number	7	7
Detector	ACIS-01236	ACIS-01236	Obspar file type	PREDICTED	ACTUAL
Grating	NONE	NONE	Obspar update status	NONE	UPDATED
Data mode	VFAINT	VFAINT	CCD I0 on	Y	Y
Observation mode	POINTING	POINTING	CCD I1 on	Y	Y
[deg] Pointing RA	218.136853	218.169808369925	CCD I2 on	Y	Y
[deg] Pointing Dec	34.608581	34.61313447457864	CCD I3 on	Y	Y
[deg] Pointing Roll	339.070487	339.2604570376106	CCD S0 on	N	N
[mm] SIM focus pos	-0.782348	-0.7809083437167272	CCD S1 on	N	N
[mm] SIM defocus	0	0.001439871863259334	CCD S2 on	O1	Y
[mm] SIM translation stage pos	-233.592463	-233.5874344608287	CCD S3 on	N	N
[mm] SIM translation stage offset	0	-0.005018542100998502	CCD S4 on	N	N
[s] Observation start time (MET)	372220588.184000	372218508.88521	CCD S5 on	N	N
Observation start date	2009-10-18T02:35:22	2009-10-18T02:01:48	Number of optional ACIS chips dropped	0	0
[s] Observation end time (MET)	372252588.184000	372252901.73694	On-chip summing requested	N	N
Observation end date	2009-10-18T11:28:42	2009-10-18T11:35:01	Subarray requested	NONE	NONE
Read mode	TIMED	TIMED	Alternating exposures requested	N	N
			[s] Primary exposure time	0.000000	3.1

2.3 Aspect



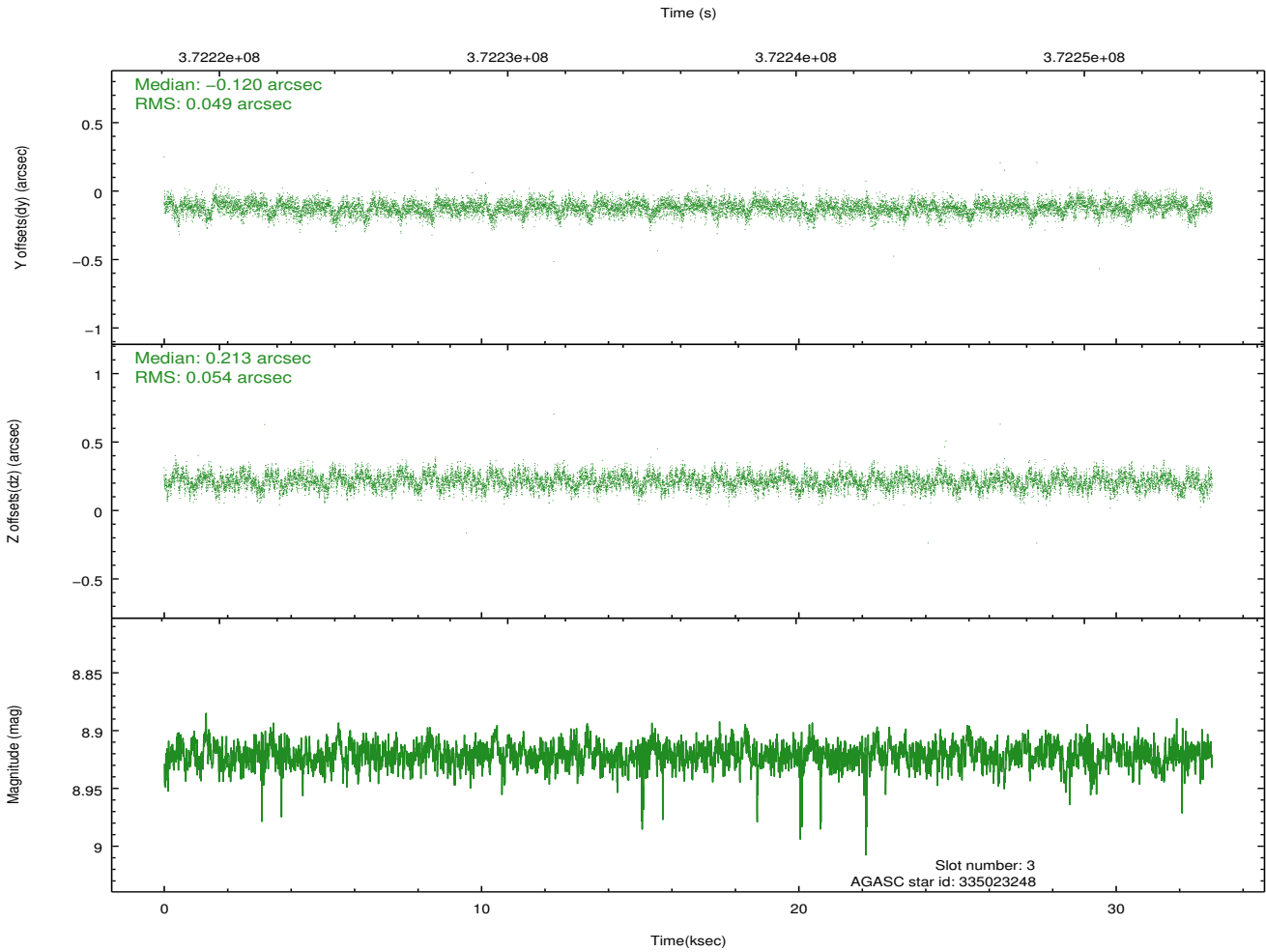
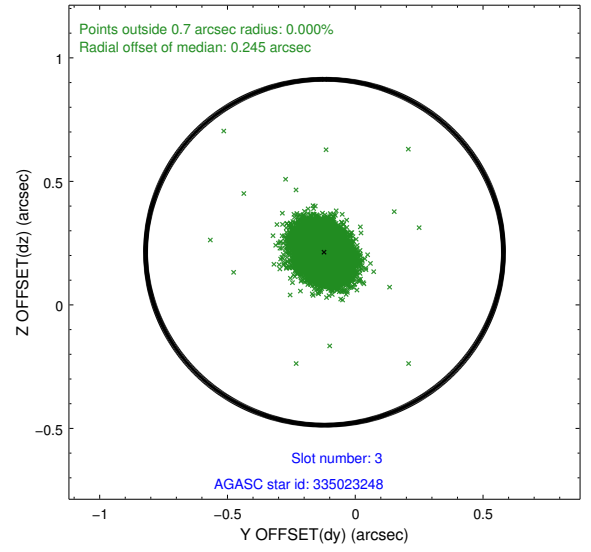
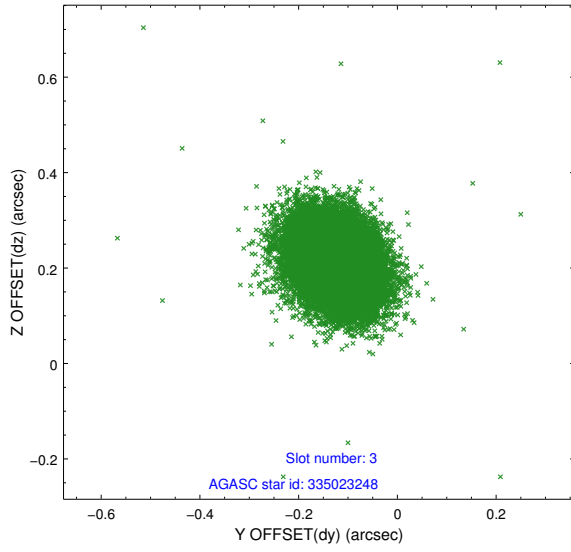


Slot Statistics

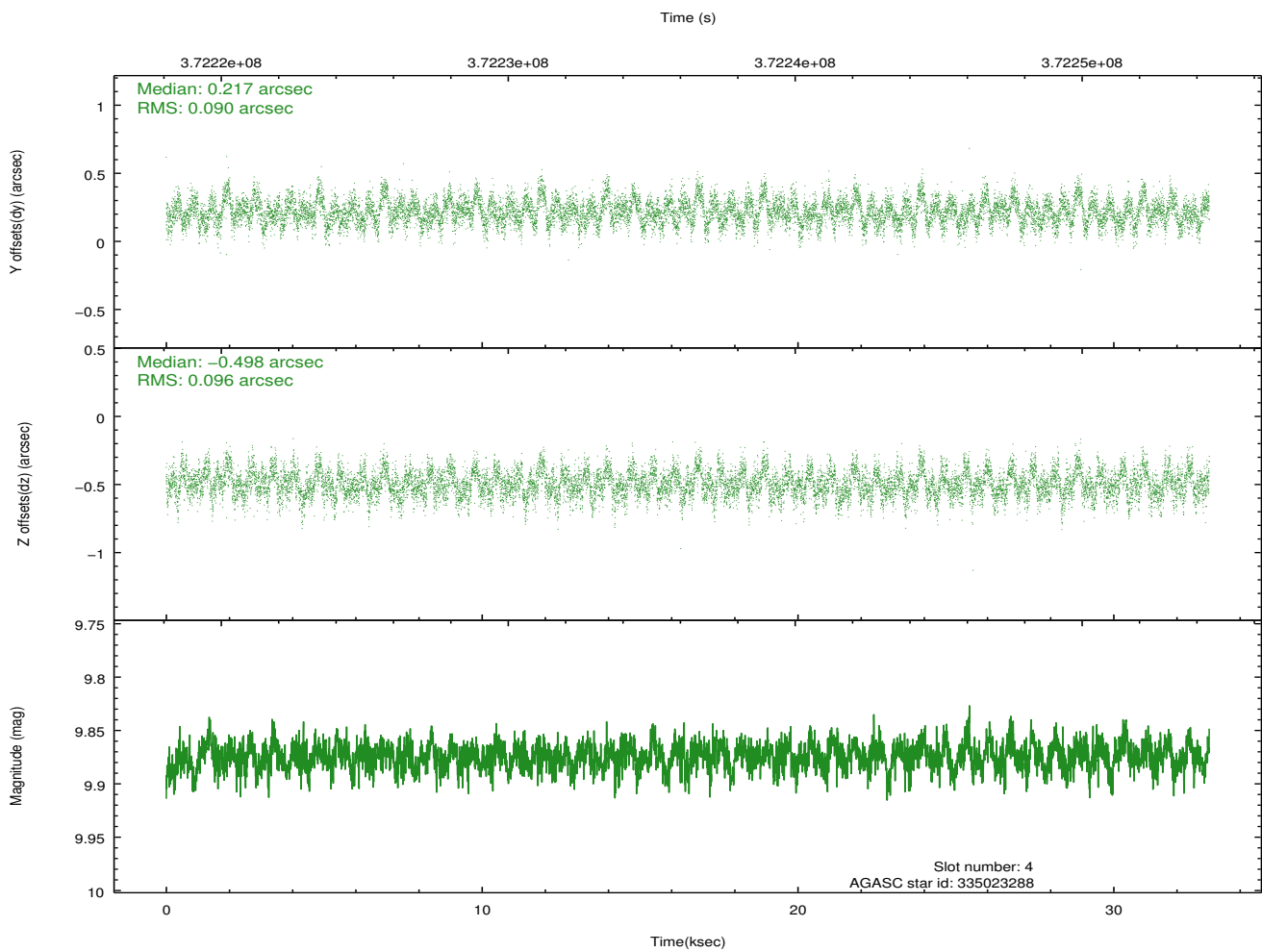
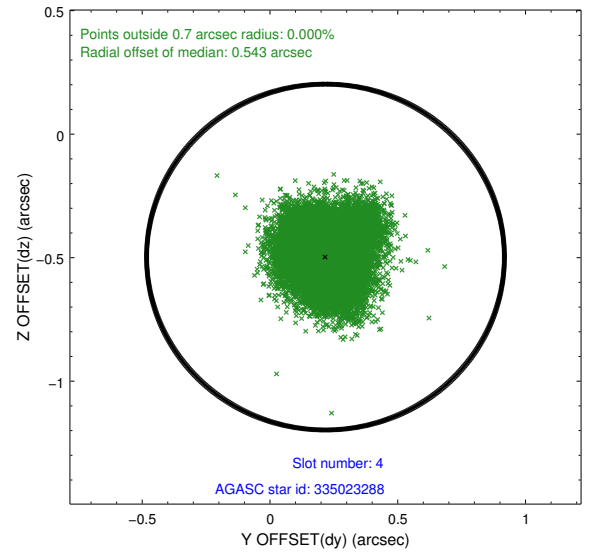
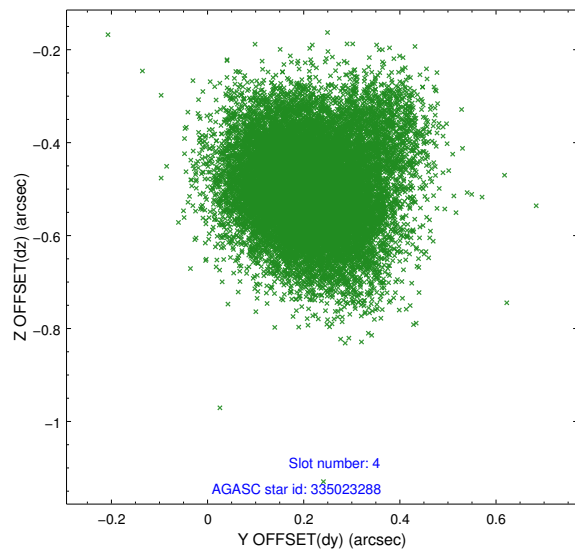
slot	status	id	mag	n_pts	med_dy	med_dz	dr1	dr2	ra	dec	mean_y	mean_z
0	FID	ACIS-I-1	6.99	8056	0.041	-0.026	0.014	0.061	0.000000	0.000000	926.70	-839.55
1	FID	ACIS-I-5	6.99	8055	-0.183	0.052	0.026	0.034	0.000000	0.000000	-1821.59	1057.99
2	FID	ACIS-I-6	6.98	8055	0.045	0.044	0.024	0.053	0.000000	0.000000	392.21	1702.53
3	GUIDE	335023248	8.92	16089	-0.120	0.213	0.077	0.125	217.634832	34.944512	-1816.80	604.07
4	GUIDE	335023288	9.87	16090	0.217	-0.498	0.139	0.229	217.791365	34.425735	-723.22	-980.05
5	GUIDE	335023304	8.40	16108	-0.107	0.058	0.064	0.106	218.883608	34.686545	1961.68	1059.64
6	GUIDE	335025040	9.87	16070	-0.050	0.047	0.217	0.324	218.601670	34.305240	1680.49	-523.00
7	GUIDE	335415168	9.79	16019	0.057	0.196	0.145	0.235	217.681296	35.301767	-2143.50	1855.53

2.4 Star Slots

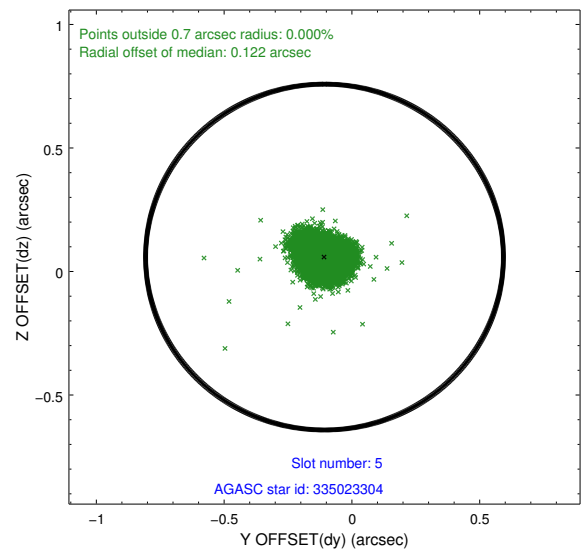
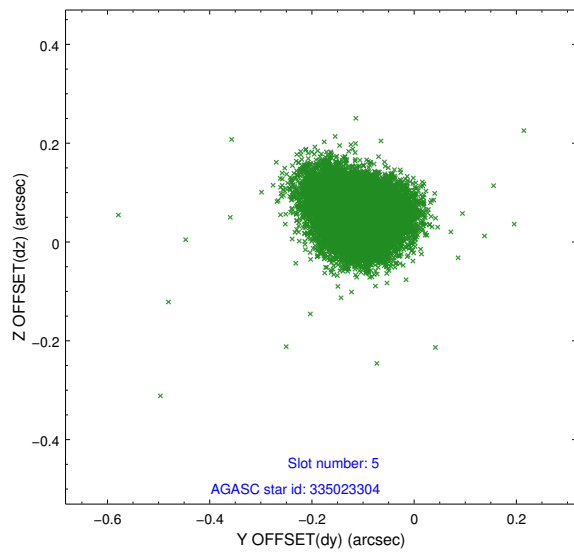
2.4.1 Slot 3



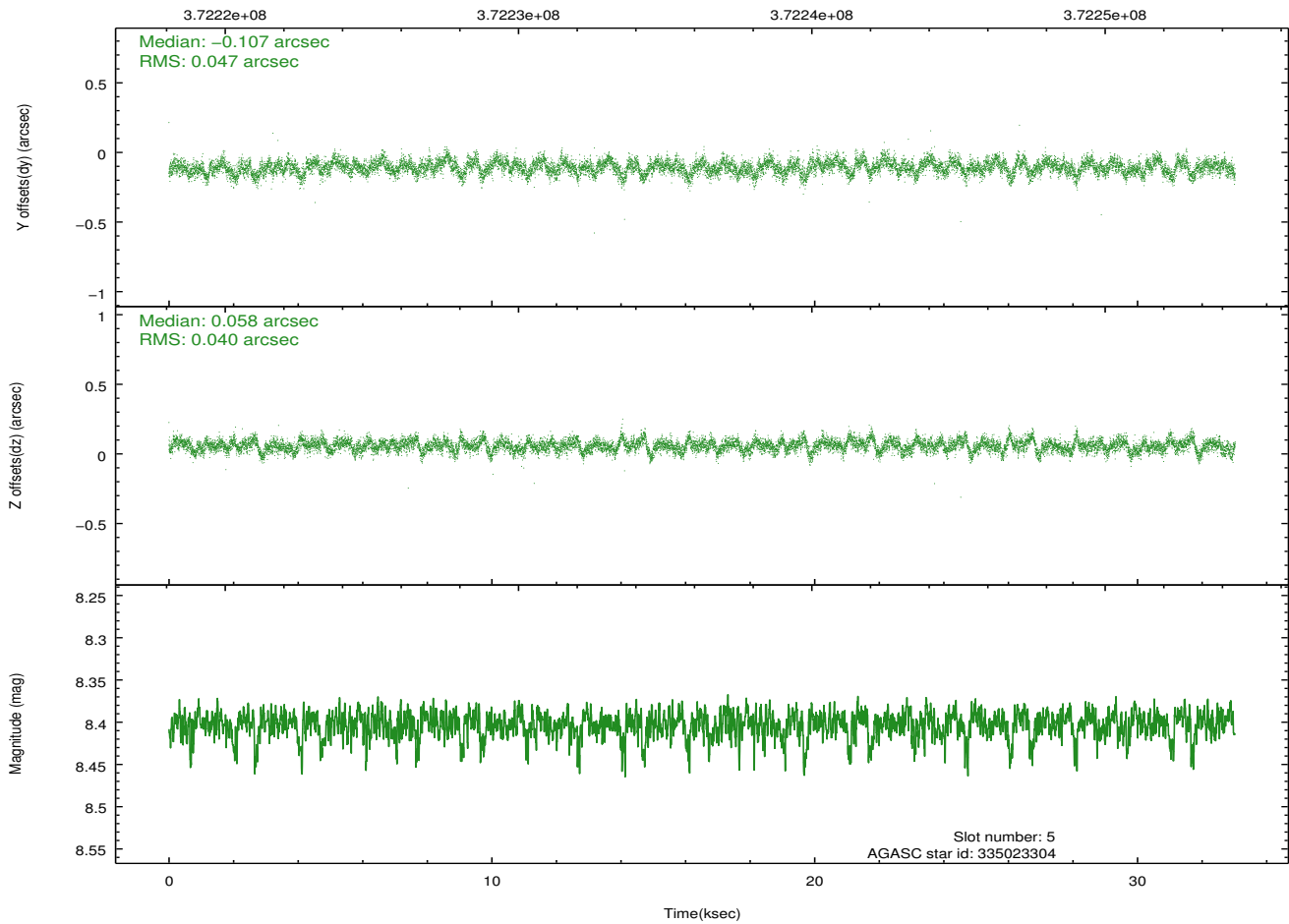
2.4.2 Slot 4



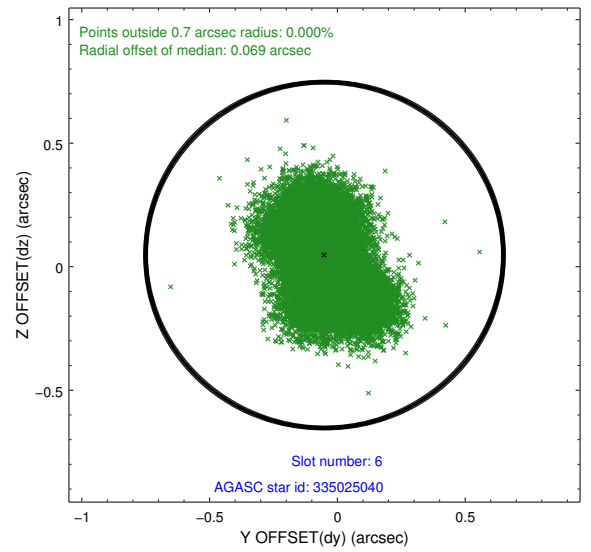
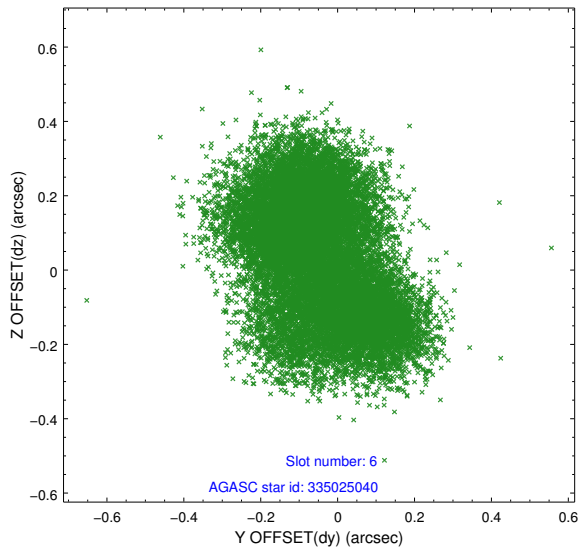
2.4.3 Slot 5



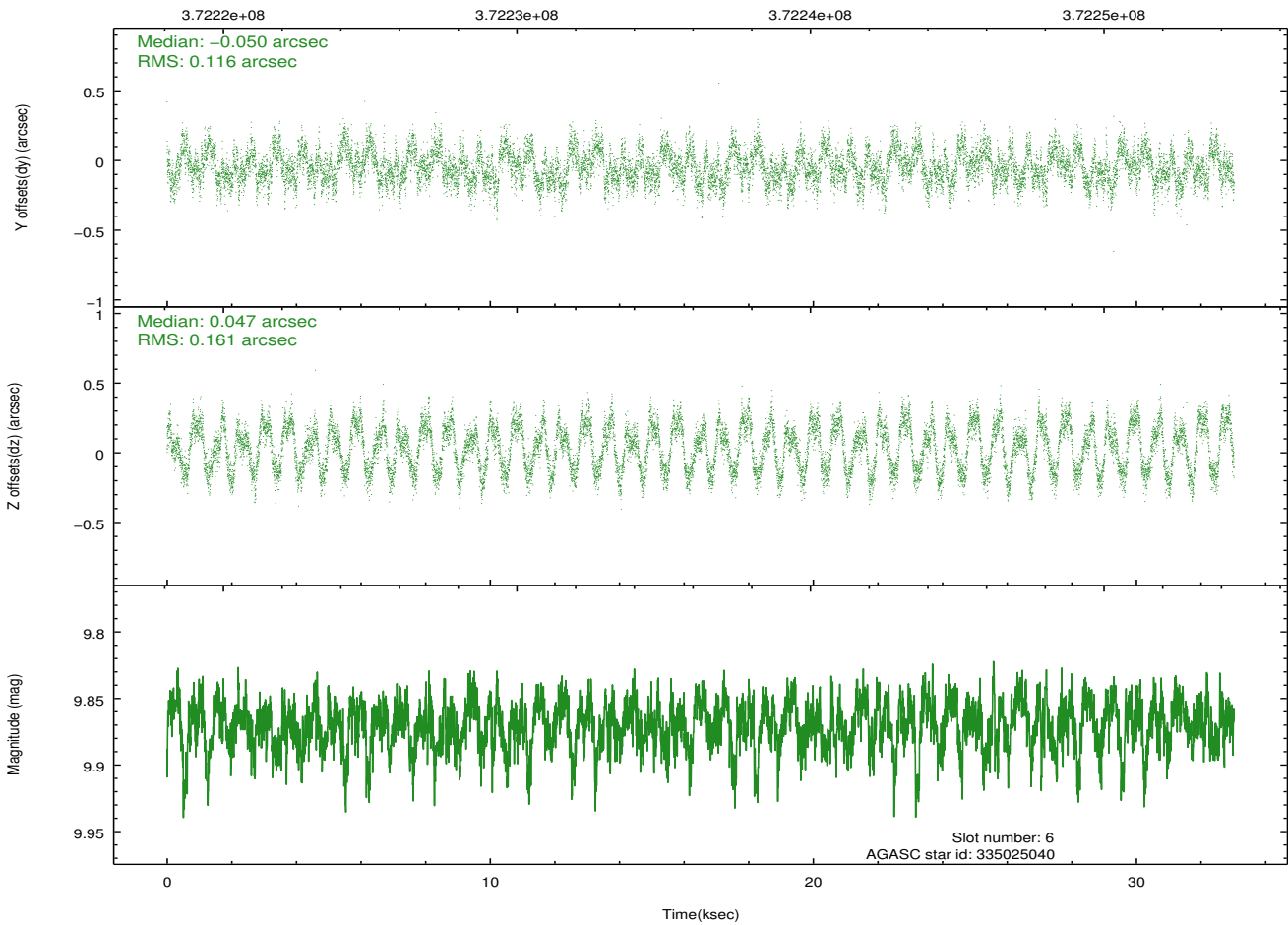
Time (s)



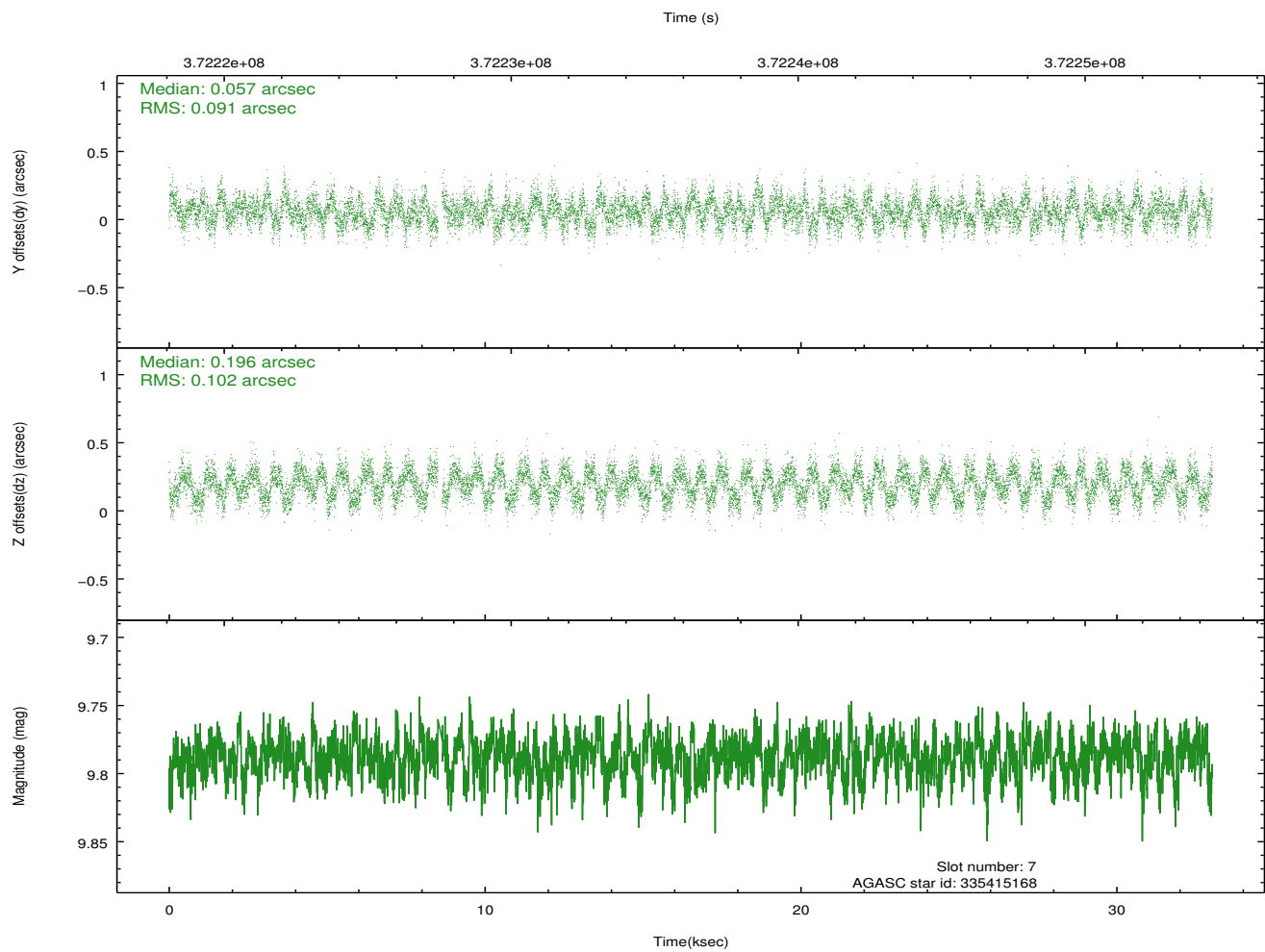
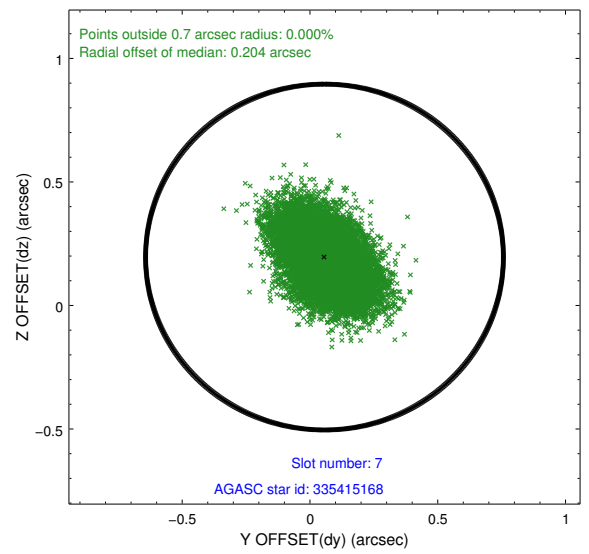
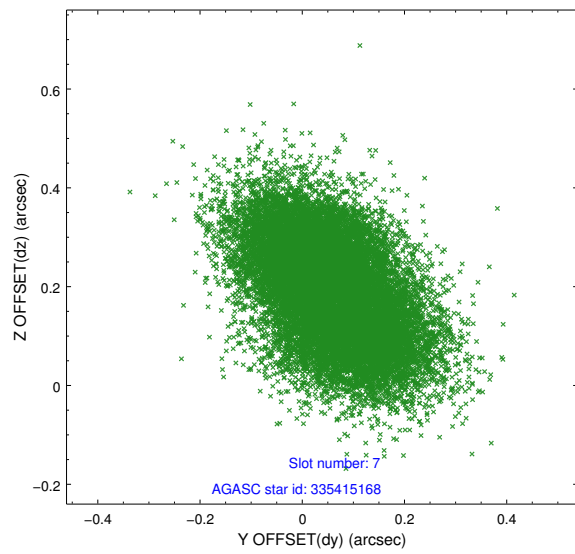
2.4.4 Slot 6



Time (s)

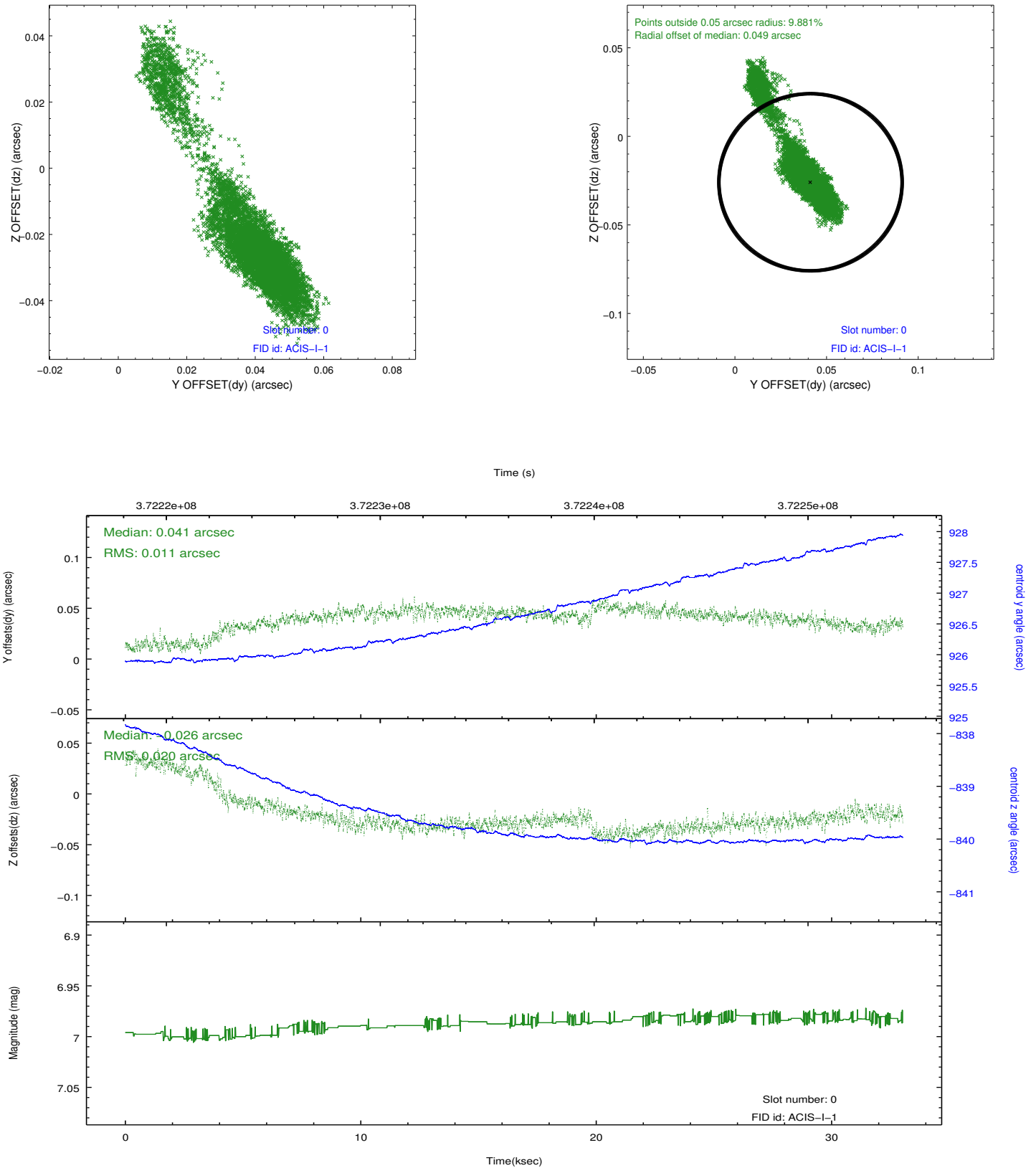


2.4.5 Slot 7

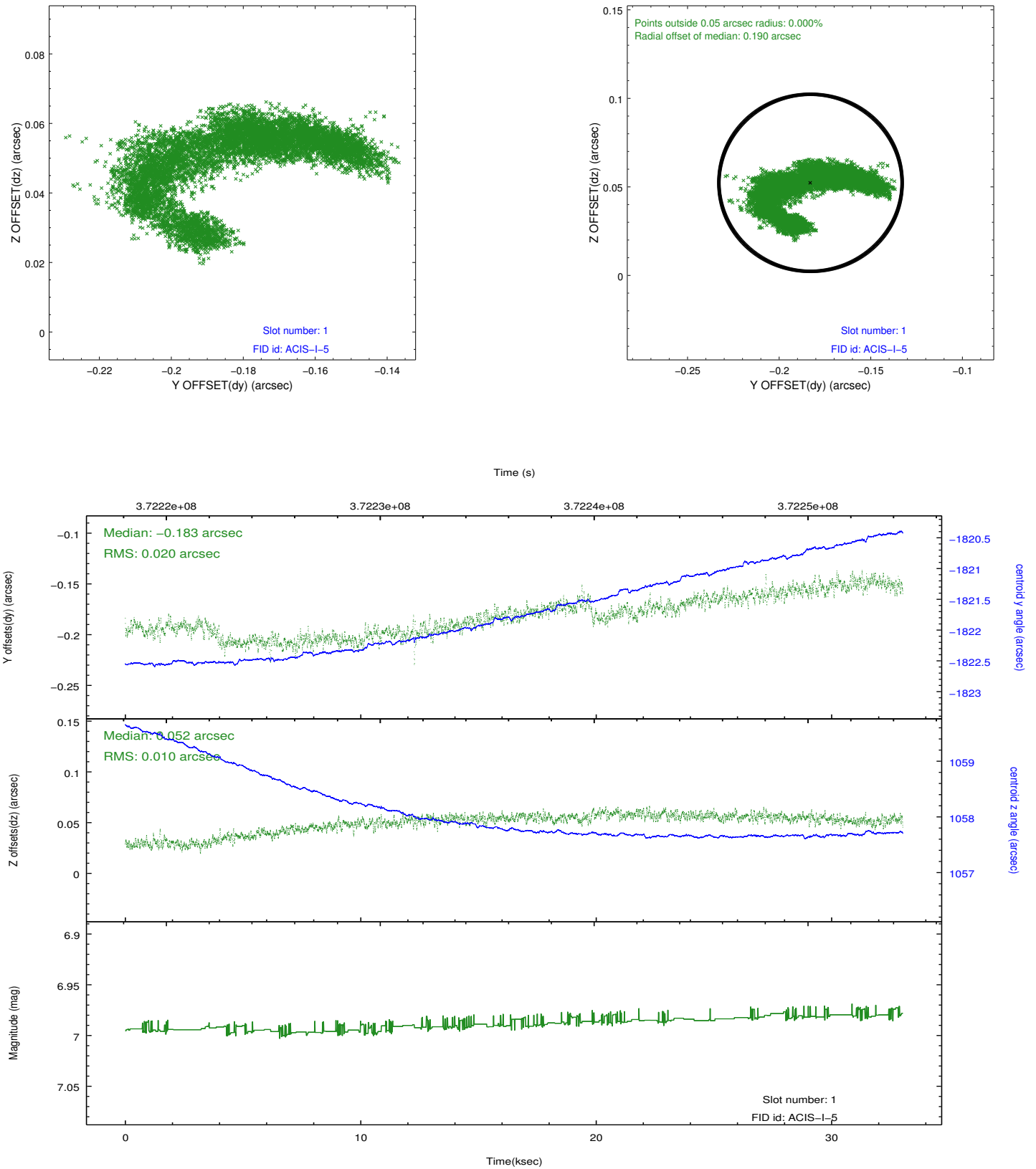


2.5 FID Slots

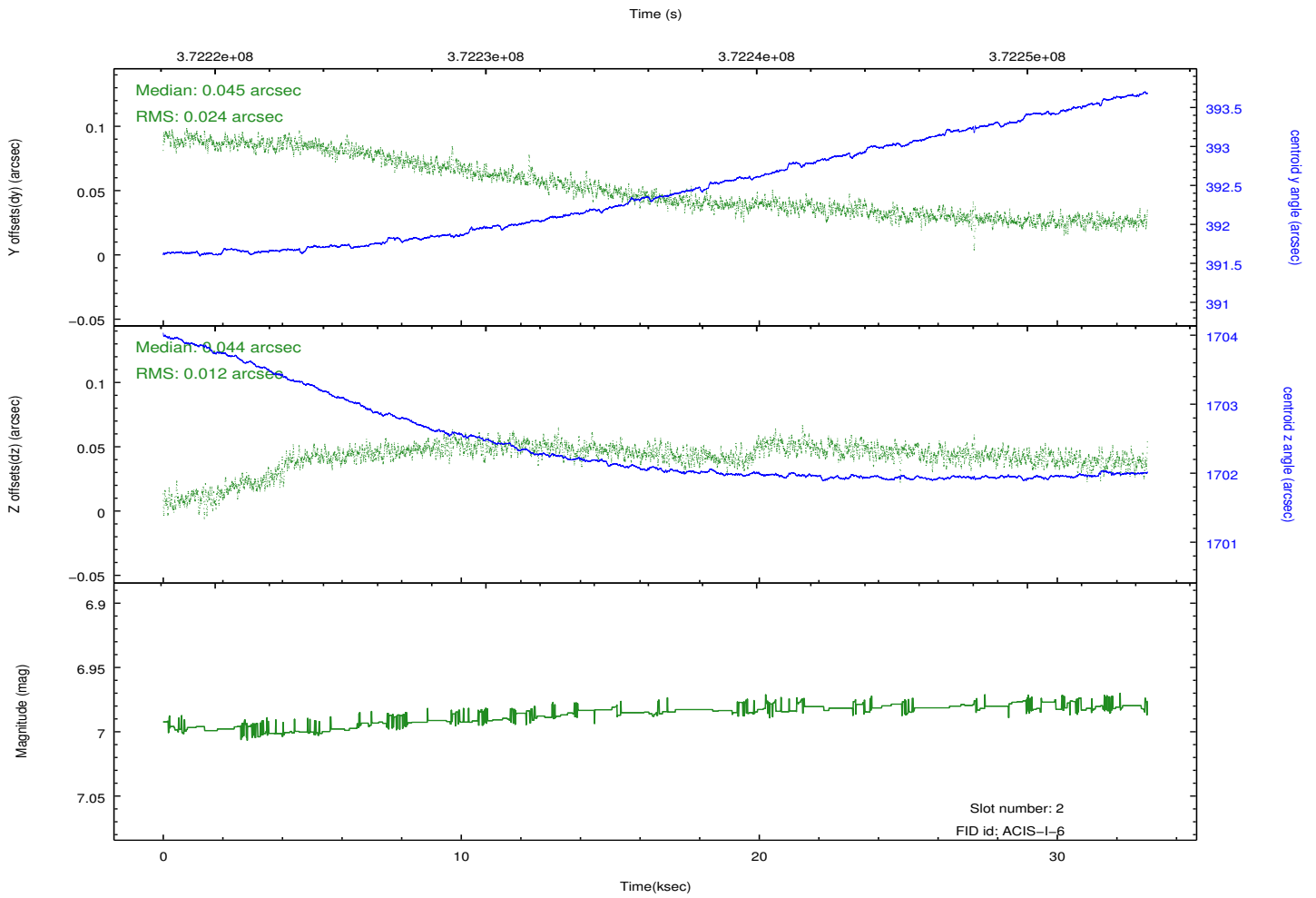
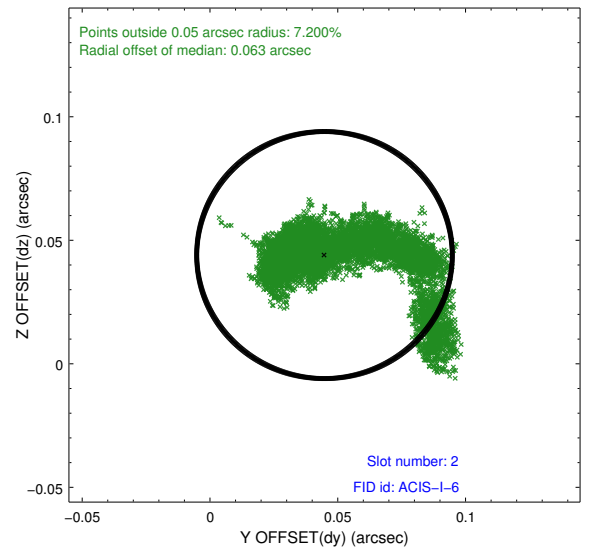
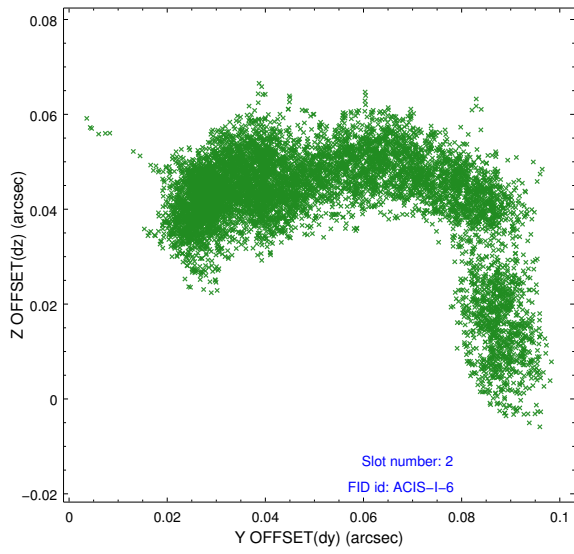
2.5.1 Slot 0



2.5.2 Slot 1



2.5.3 Slot 2



A Summary

A.1 Status

V&V Scientist	Jen Lauer
V&V Date (YYYY-MM-DD)	2012.06.19
V&V Edition	1
V&V Disposition and Status	OK
V&V Charge Time	32.221400247812

A.2 Comments