

V&V Reference Report

L2 ASCDS Version : 8.4.4

Observation 10836 - L2 Version 2
Chandra X-Ray Center

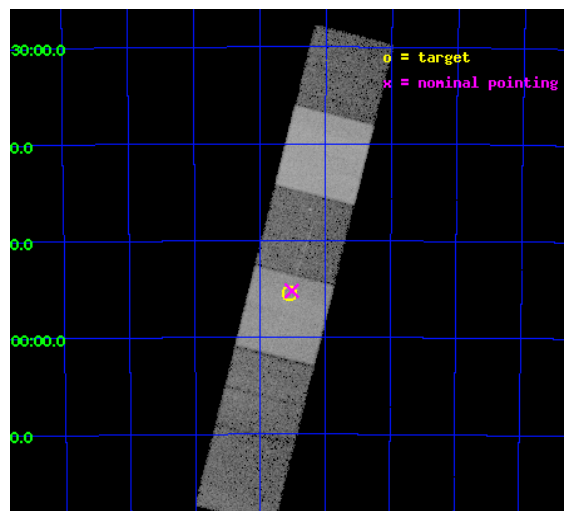
L2 Processing Date : May 29 2012

Contents

1	Front	2
2	OBI	3
2.1	OBI	3
2.1.1	Images	3
2.1.2	Bias	3
2.1.3	Parameters	4
2.1.4	Events	4
2.2	Compared Parameters	5
2.3	Aspect	6
2.4	Star Slots	9
2.4.1	Slot 3	9
2.4.2	Slot 4	10
2.4.3	Slot 5	11
2.4.4	Slot 6	12
2.4.5	Slot 7	13
2.5	FID Slots	14
2.5.1	Slot 0	14
2.5.2	Slot 1	15
2.5.3	Slot 2	16
3	Gratings	17
3.1	HEG Arm	17
3.2	MEG Arm	19
A	Summary	21
A.1	Status	21
A.2	Comments	21

1 Front

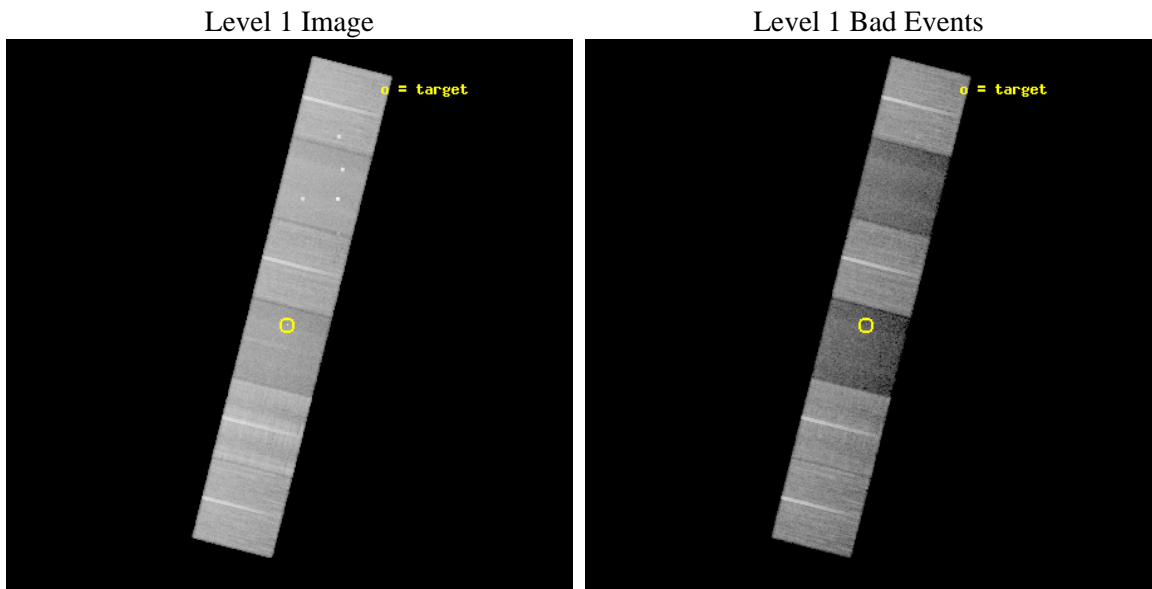
seq_num	200510	Sequence number
obs_id	10836	Observation id
title	An Emerging Class of Hot Emission Line Stars: HD 119682	Proposal t
observer	Dr Cara Rakowski	Principal investigator
object	HD 119682	Source name
dtycycle	0	
cycle	P	events from which exps? Prim/Second/Both
ra_targ	206.635833	Observer's specified target RA [deg]
dec_targ	-62.923361	Observer's specified target Dec [deg]
ra_nom	206.62824077822	Nominal RA [deg]
dec_nom	-62.919989779147	Nominal Dec [deg]
roll_nom	104.14985932656	Nominal Roll [deg]
revision	2	Processing version of data
ontime	30140.799887776	Sum of GTIs [s]
livetime	29759.138930987	Livetime [s]
ontime4	30137.558907509	Sum of GTIs [s]
ontime5	30140.799887776	Sum of GTIs [s]
ontime6	30140.799887776	Sum of GTIs [s]
ontime7	30140.799887776	Sum of GTIs [s]
ontime8	30131.076936901	Sum of GTIs [s]
ontime9	30140.799887776	Sum of GTIs [s]
l2events	248192	Number of level 2 events



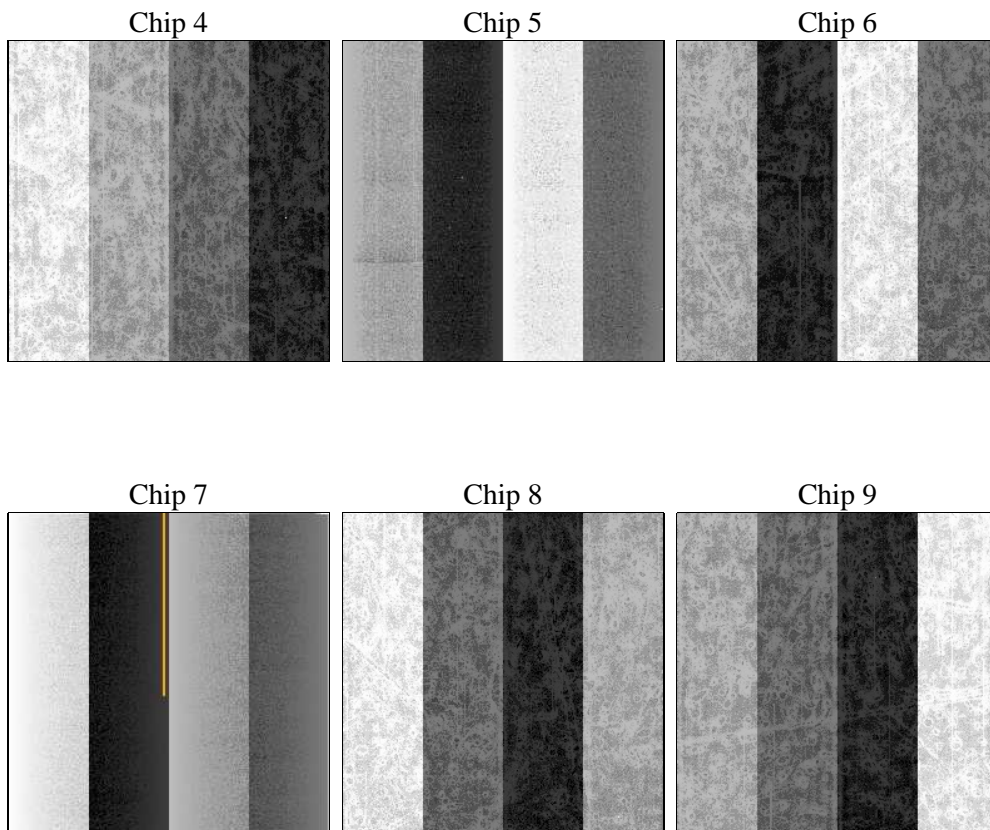
2 OBI

2.1 OBI

2.1.1 Images



2.1.2 Bias



2.1.3 Parameters

obi_num	1	Obi number	sched_exp_time	30000.000000	[s] Scheduled observation exposure time
ascdsver	8.4.4	Processing system revision	ontime	30140.799887776	Sum of GTIs [s]
caldsver	4.4.9	 	ontime4	30137.558907509	Sum of GTIs [s]
date	2012-05-29T15:02:23	Date and time of file creation	ontime5	30140.799887776	Sum of GTIs [s]
revision	2	Processing version of data	ontime6	30140.799887776	Sum of GTIs [s]
			ontime7	30140.799887776	Sum of GTIs [s]
			ontime8	30131.076936901	Sum of GTIs [s]
			ontime9	30140.799887776	Sum of GTIs [s]
			l1events	1273730	Number of level 1 events

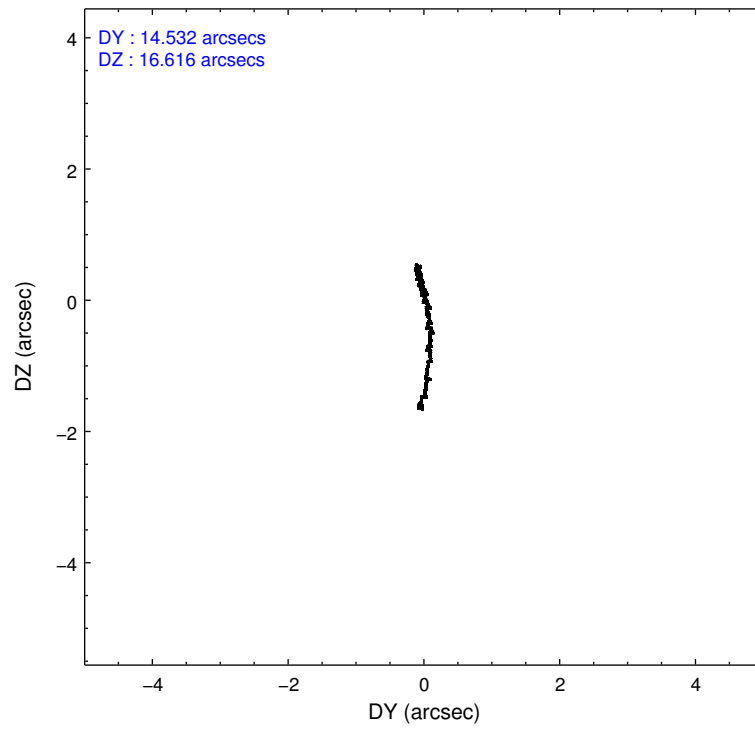
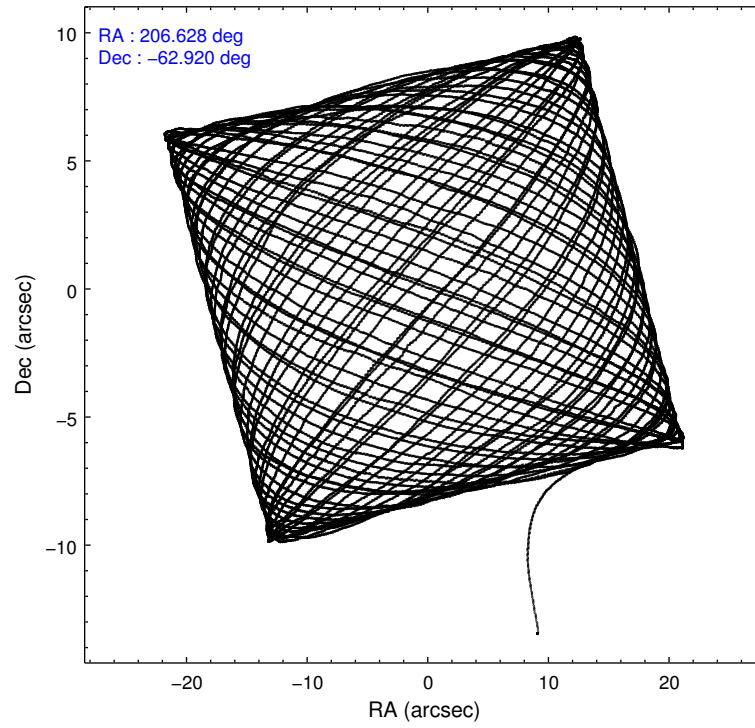
2.1.4 Events

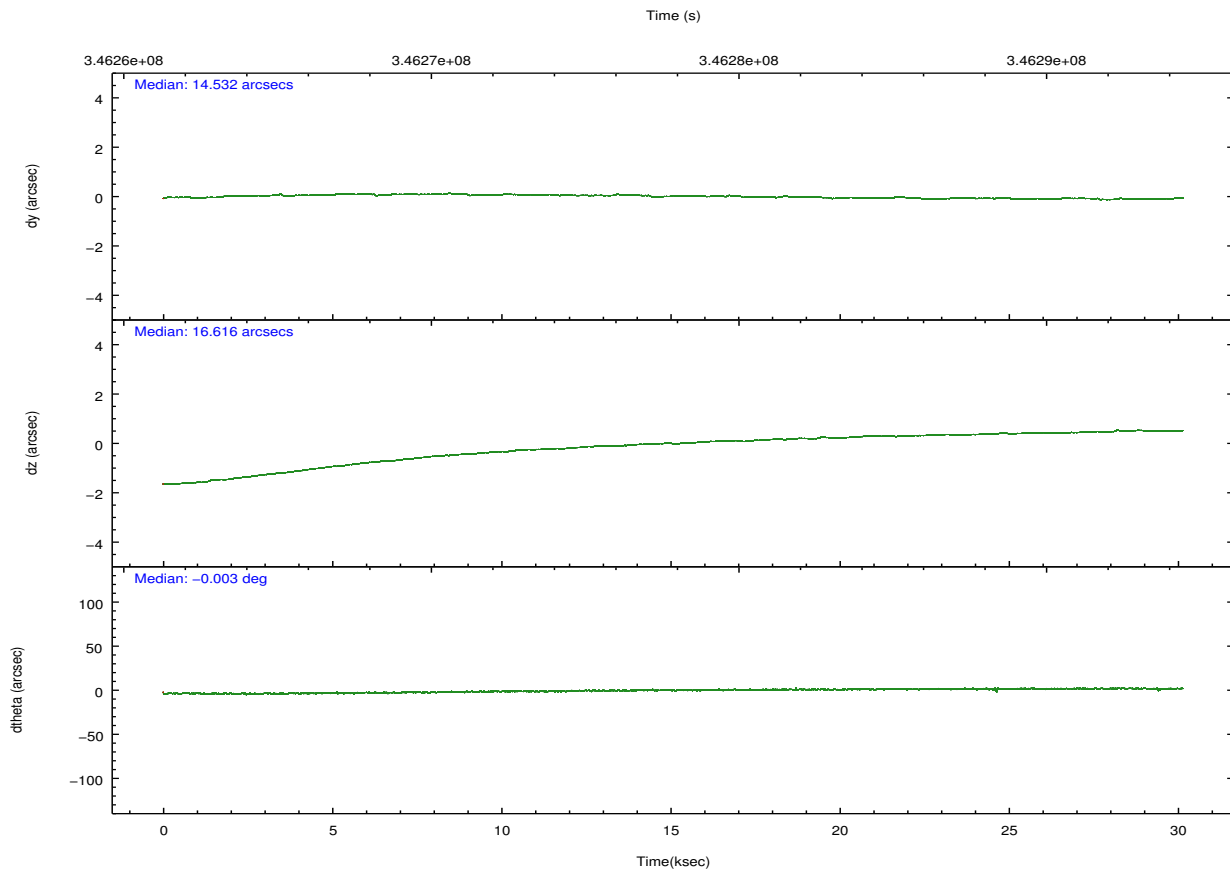
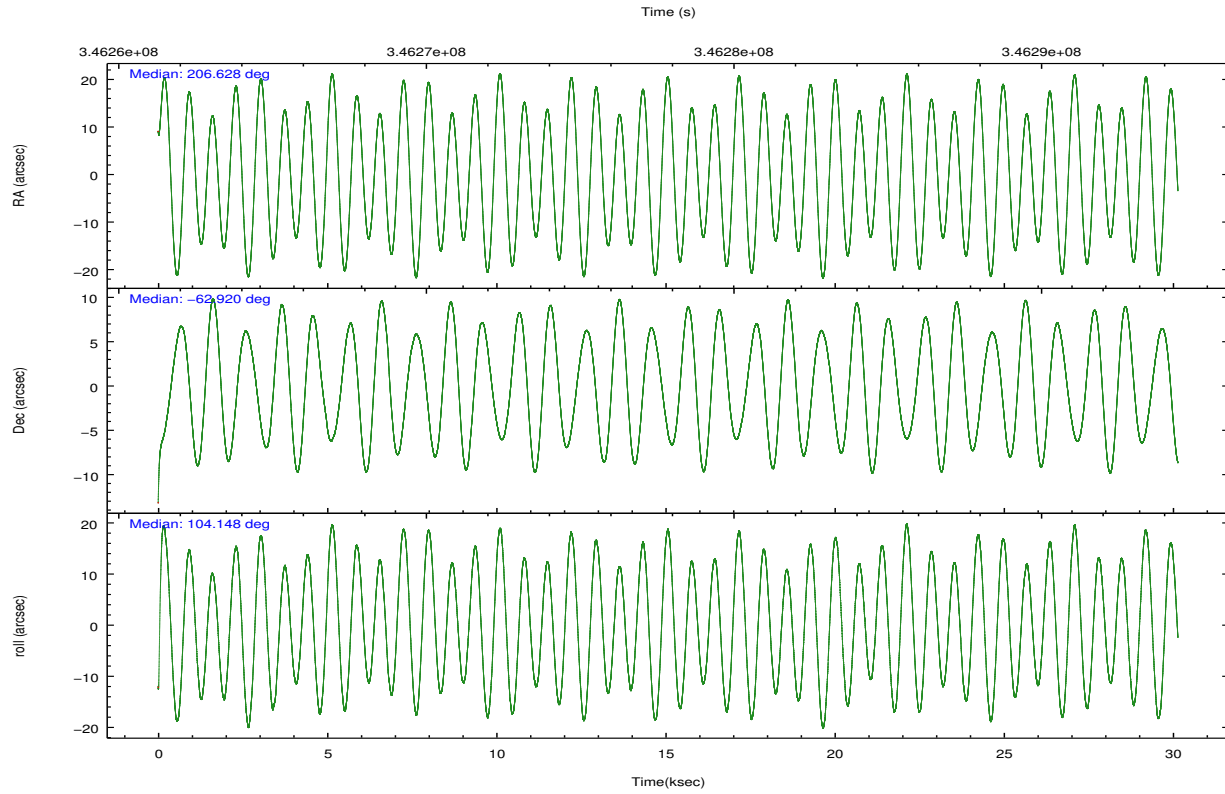
	ccd 4	ccd 5	ccd 6	ccd 7	ccd 8	ccd 9		ccd 4	ccd 5	ccd 6	ccd 7	ccd 8	ccd 9
level 1 events	262423	199106	215161	131005	263248	202787	grade 0 events	10250	19112	9433	10115	20713	7380
rejected events	239782	78715	193806	55403	191027	183738		3%	9%	4%	7%	7%	3%
rejected %	91%	39%	90%	42%	72%	90%	grade 1 events	216	673	111	345	252	102
								0%	0%	0%	0%	0%	0%
							grade 2 events	5407	37988	4588	18361	17036	4274
								2%	19%	2%	14%	6%	2%
							grade 3 events	2226	6003	2128	7524	8000	2075
								0%	3%	0%	5%	3%	1%
							grade 4 events	2051	5771	2085	7552	7248	2109
								0%	2%	0%	5%	2%	1%
							grade 5 events	4524	15956	4431	13232	7740	4951
								1%	8%	2%	10%	2%	2%
							grade 6 events	2877	52285	3242	32539	19611	3325
								1%	26%	1%	24%	7%	1%
							grade 7 events	234872	61318	189143	41337	182648	178571
								89%	30%	87%	31%	69%	88%

2.2 Compared Parameters

Parameter	Planned	Actual	Parameter	Planned	Actual
Instrument	ACIS	ACIS	Obspar format version number	7	7
Detector	ACIS-456789	ACIS-456789	Obspar file type	PREDICTED	ACTUAL
Grating	HETG	HETG	Obspar update status	NONE	UPDATED
Data mode	VFAINT	VFAINT	Number of optional ACIS chips dropped	0	0
Observation mode	POINTING	POINTING	On-chip summing requested	N	N
[deg] Pointing RA	206.670649	206.6282407782164	Subarray requested	NONE	NONE
[deg] Pointing Dec	-62.939321	-62.91998977914729	Alternating exposures requested	N	N
[deg] Pointing Roll	104.031009	104.1498593265573	[s] Primary exposure time	0.000000	3.2
[mm] SIM focus pos	-0.684267	-0.6828225247311905			
[mm] SIM defocus	0	0.001444936568705701			
[mm] SIM translation stage pos	-190.132523	-190.1425803651734			
[mm] SIM translation stage offset	0	0.01005778216563158			
[s] Observation start time (MET)	346262916.184000	346261623.866			
Observation start date	2008-12-21T16:07:31	2008-12-21T15:47:03			
[s] Observation end time (MET)	346292916.184000	346293972.8676			
Observation end date	2008-12-22T00:27:31	2008-12-22T00:46:12			
Read mode	TIMED	TIMED			

2.3 Aspect



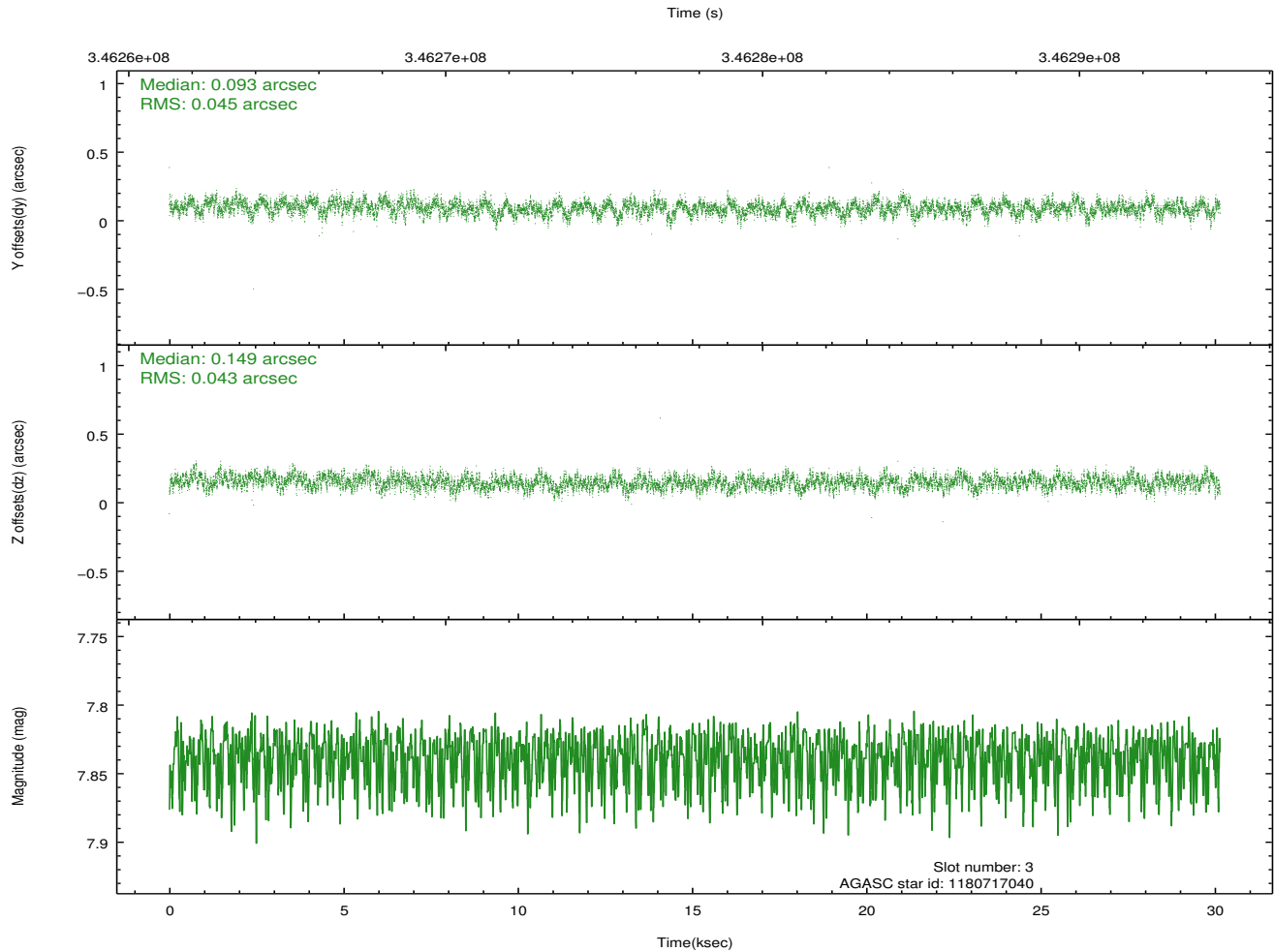
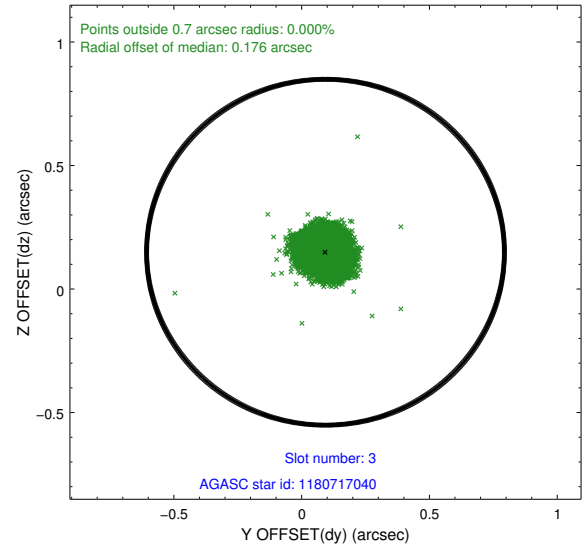
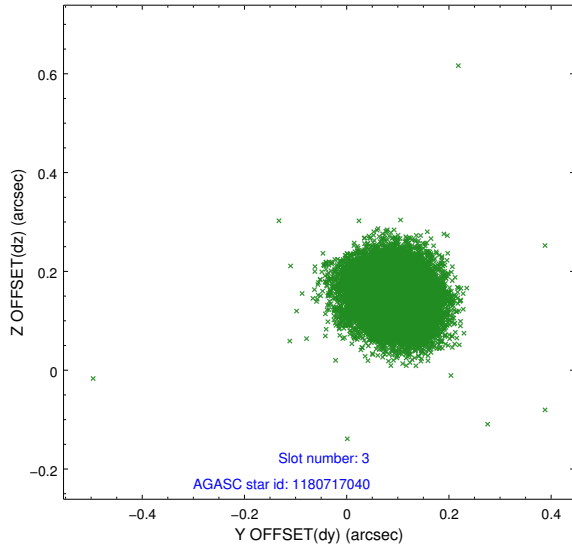


Slot Statistics

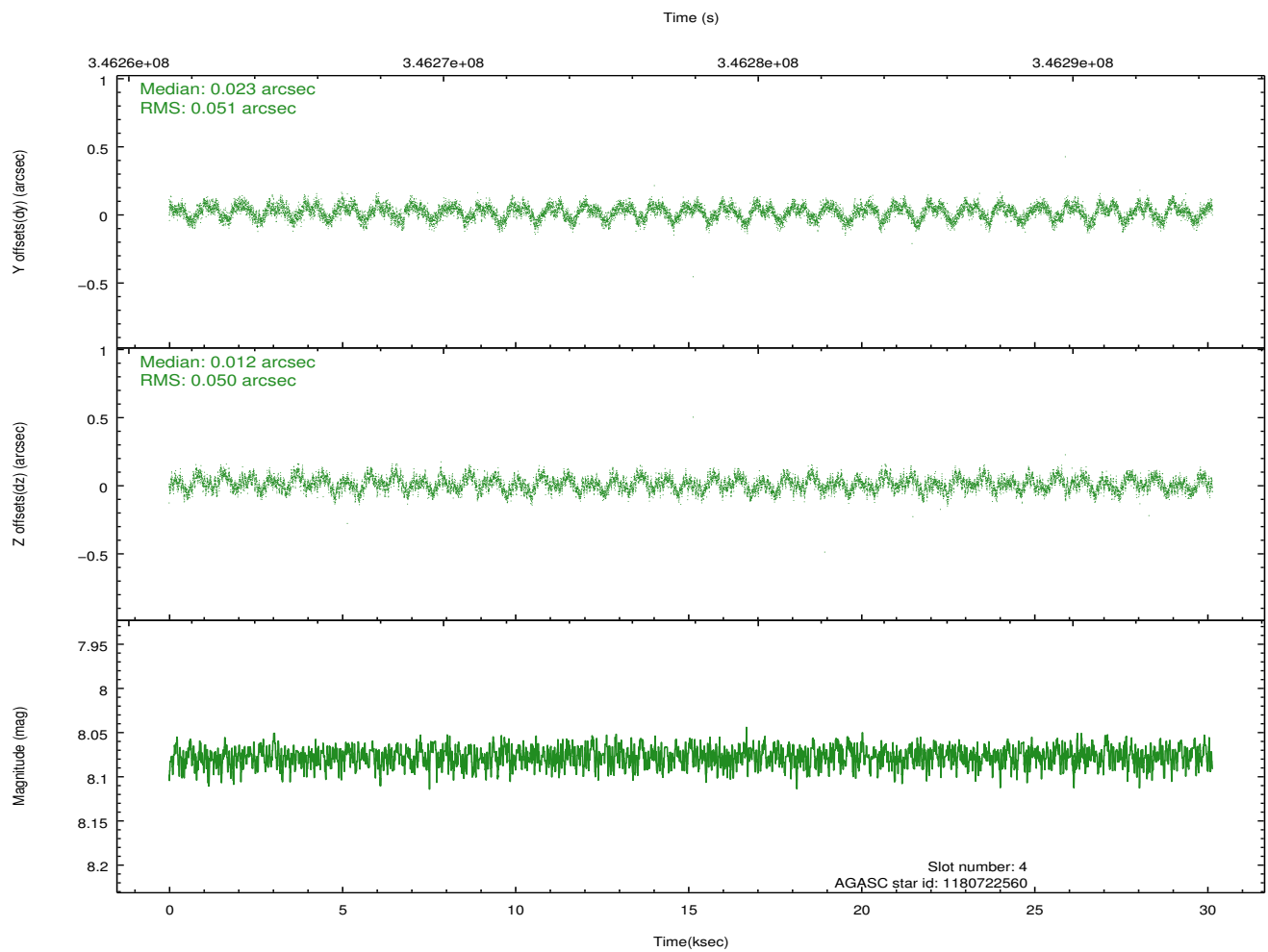
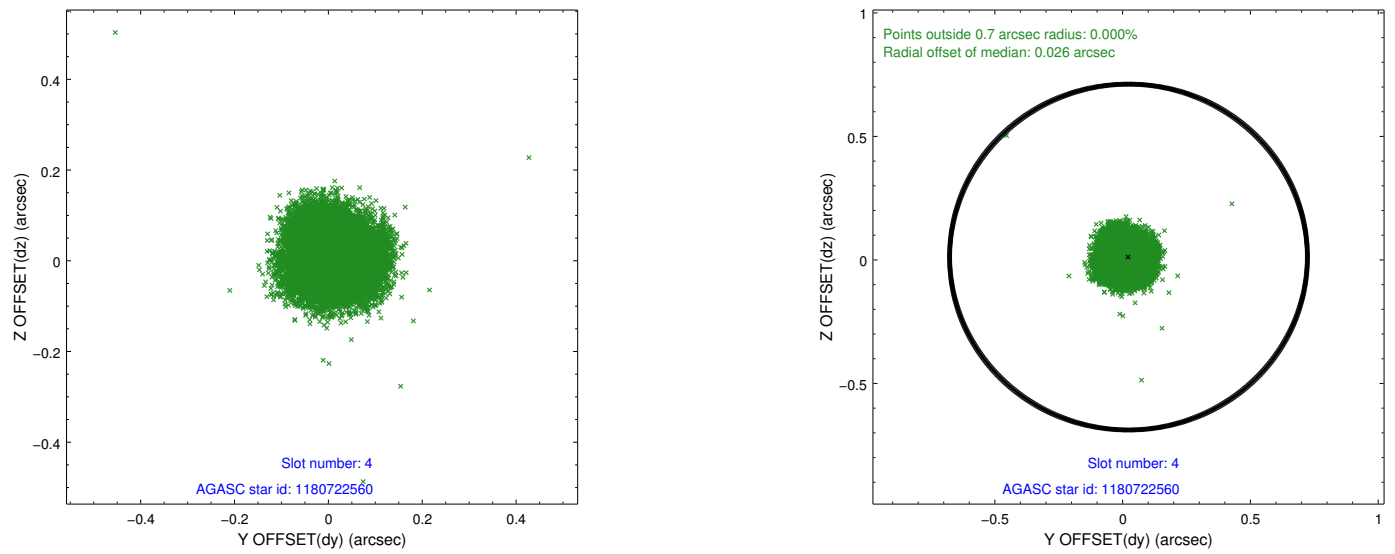
slot	status	id	mag	n_pts	med_dy	med_dz	dr1	dr2	ra	dec	mean_y	mean_z
0	FID	ACIS-S-2	6.92	7353	-0.057	-0.020	0.019	0.030	0.000000	0.000000	-767.56	-1737.80
1	FID	ACIS-S-4	7.01	7353	0.171	0.033	0.007	0.013	0.000000	0.000000	2145.93	170.63
2	FID	ACIS-S-5	7.04	7353	-0.146	-0.003	0.020	0.036	0.000000	0.000000	-1820.38	164.38
3	GUIDE	1180717040	7.84	14699	0.093	0.149	0.067	0.106	208.136771	-63.356115	-2055.29	-1925.45
4	GUIDE	1180722560	8.08	14703	0.023	0.012	0.078	0.120	207.224700	-63.223164	-1212.73	-623.02
5	GUIDE	1179002024	8.04	14703	-0.171	-0.213	0.078	0.122	205.266581	-62.776003	1106.55	2106.81
6	GUIDE	1180721992	8.62	14694	-0.134	-0.047	0.075	0.115	205.717702	-62.580888	1623.76	1223.03
7	GUIDE	1180731504	9.14	14687	0.194	0.103	0.110	0.181	207.453954	-63.504980	-2287.50	-724.46

2.4 Star Slots

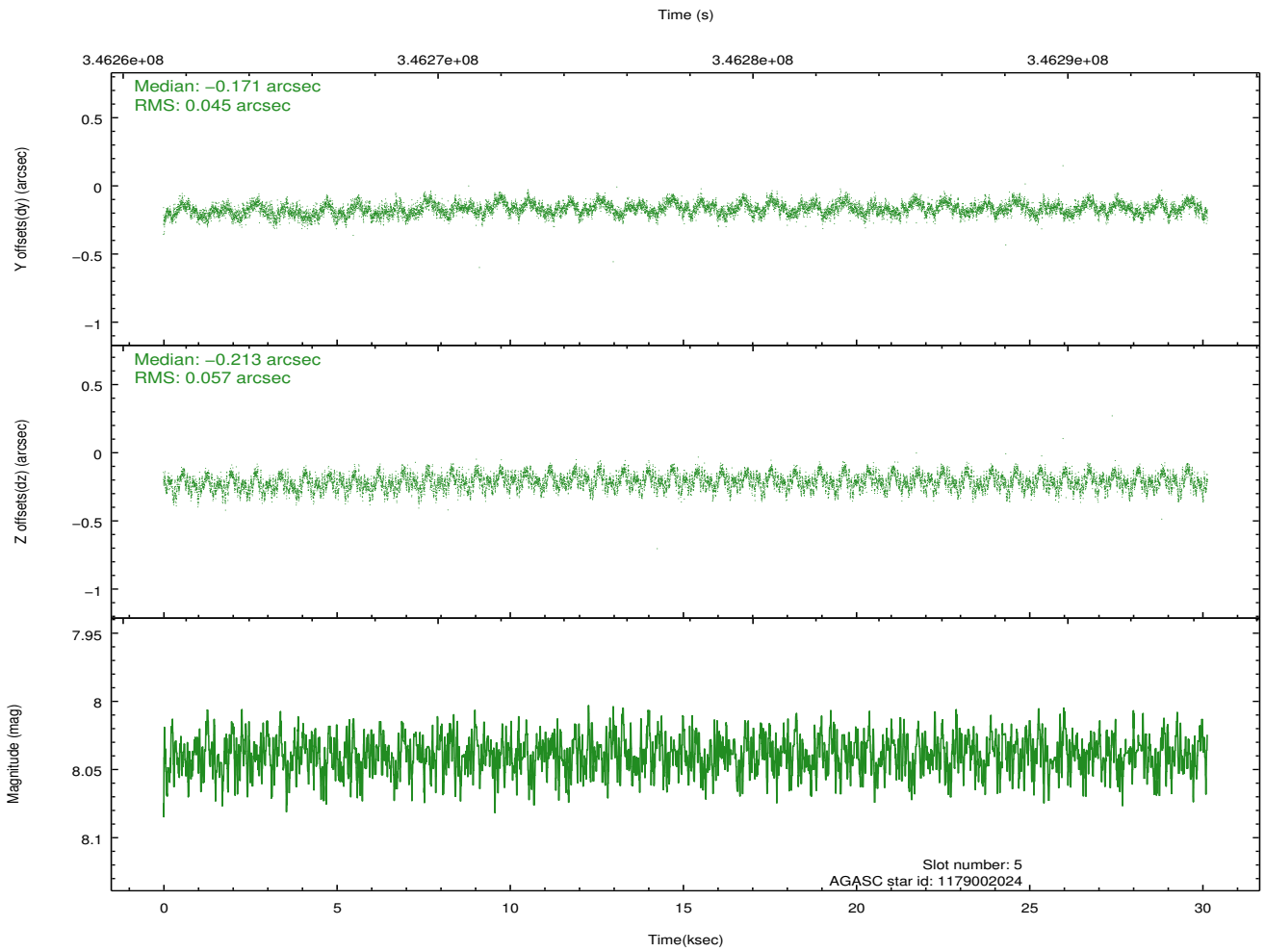
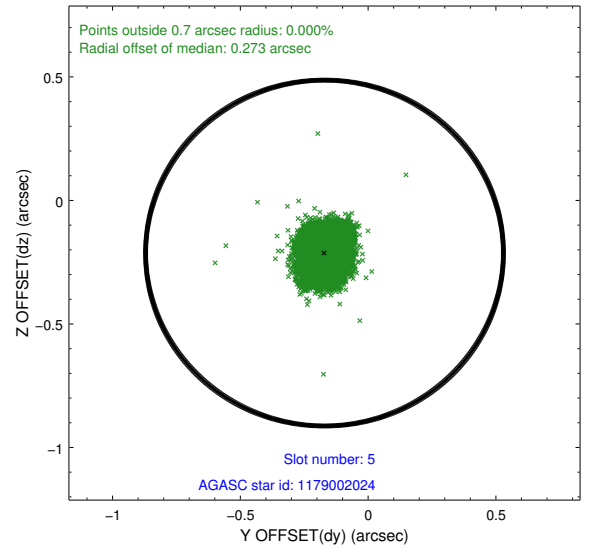
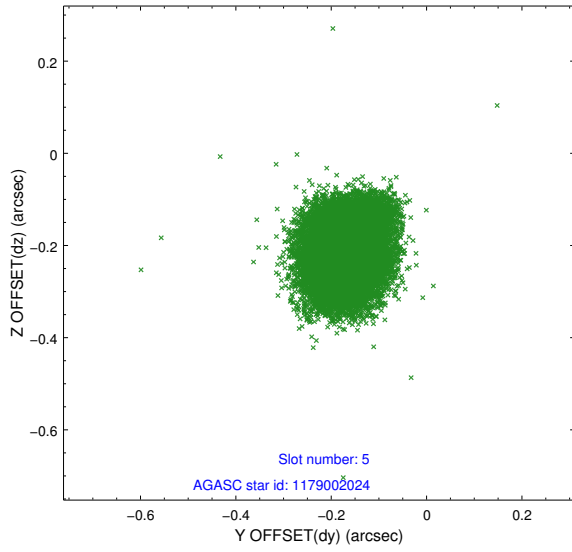
2.4.1 Slot 3



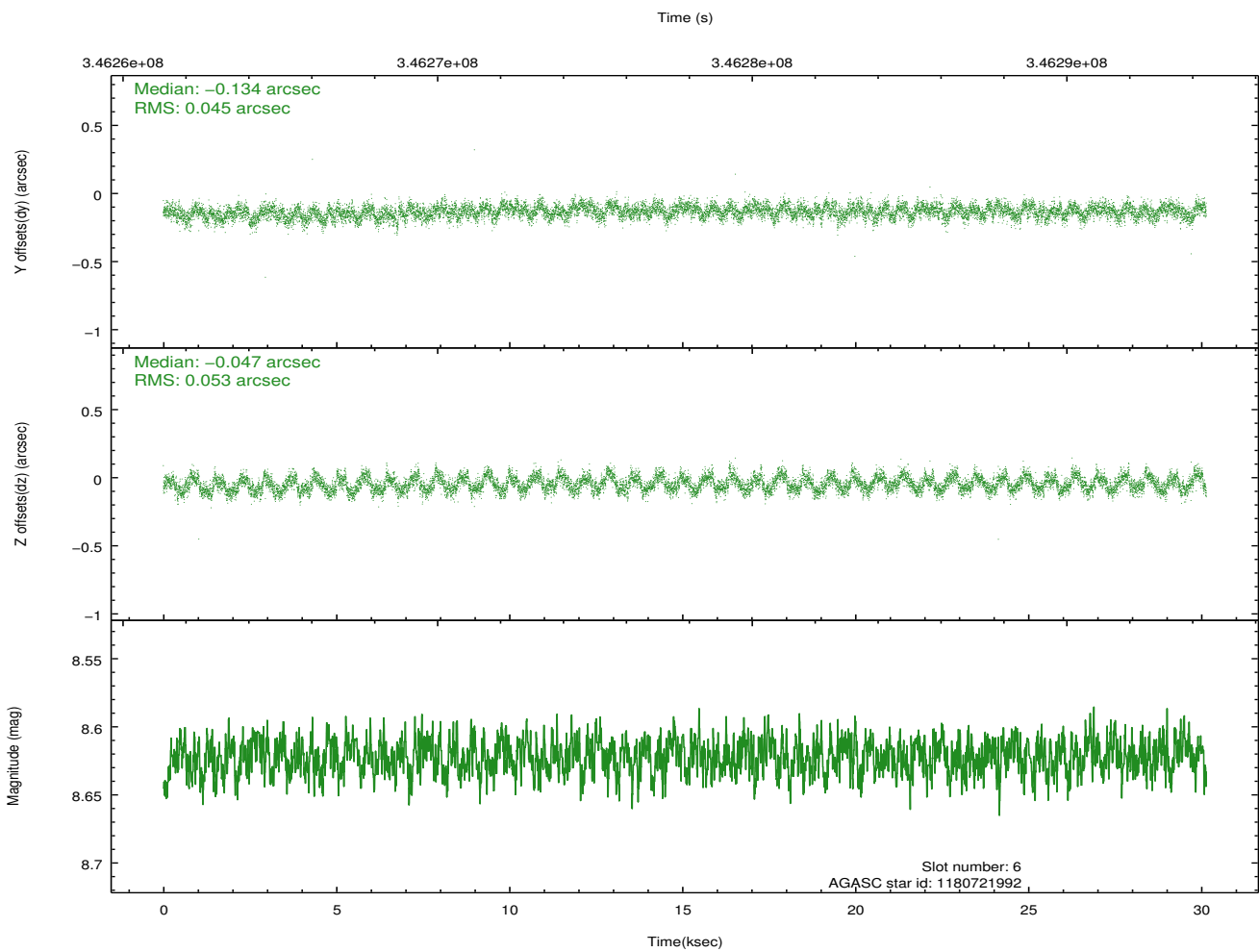
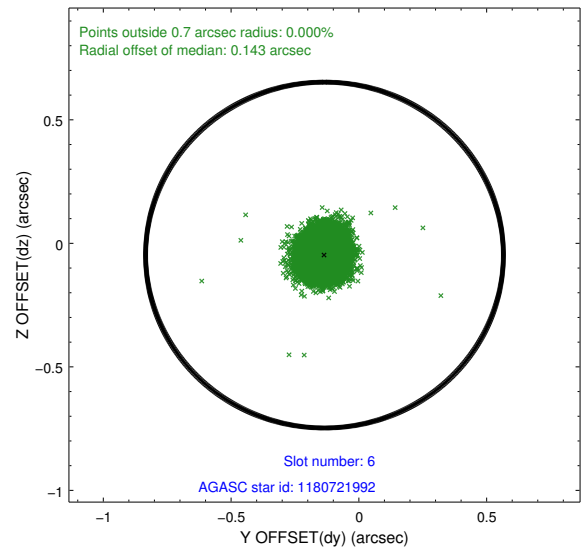
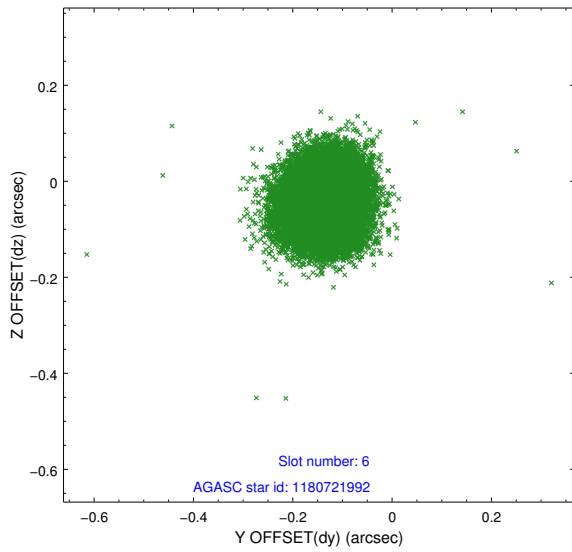
2.4.2 Slot 4



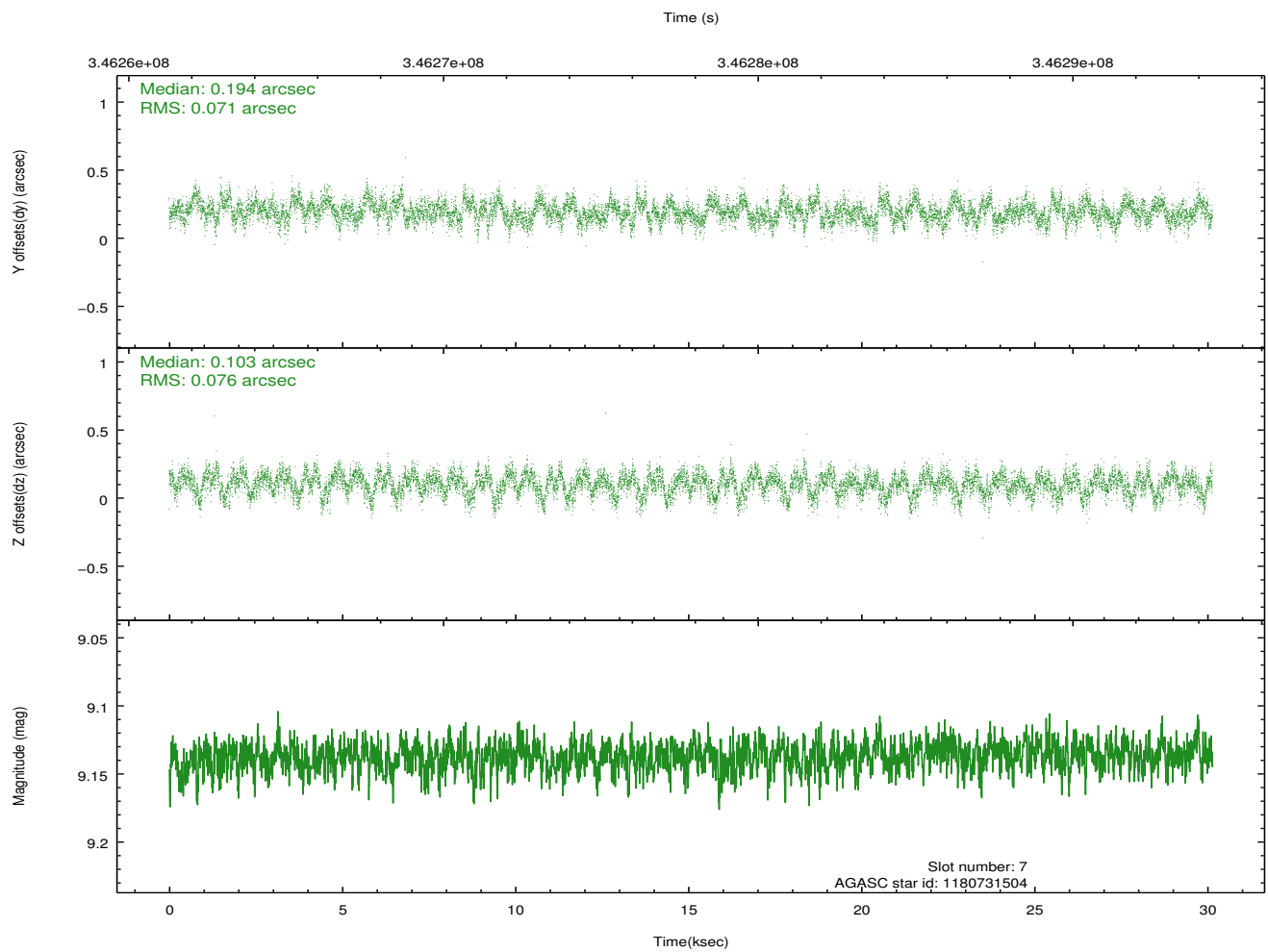
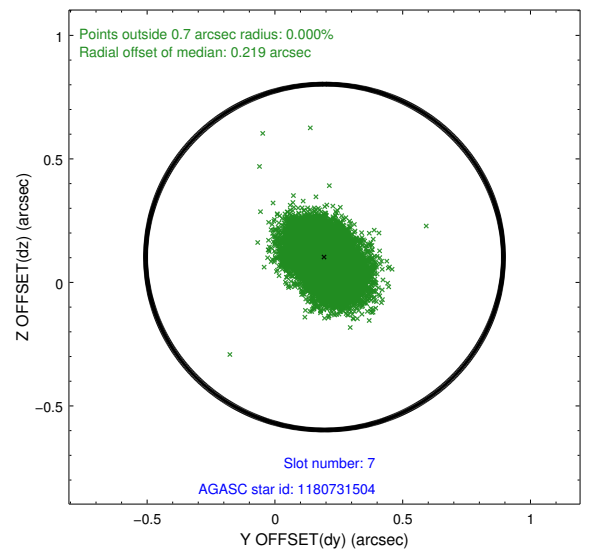
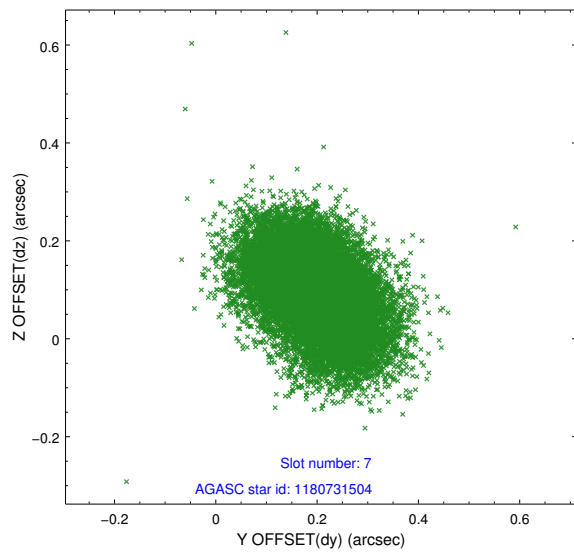
2.4.3 Slot 5



2.4.4 Slot 6

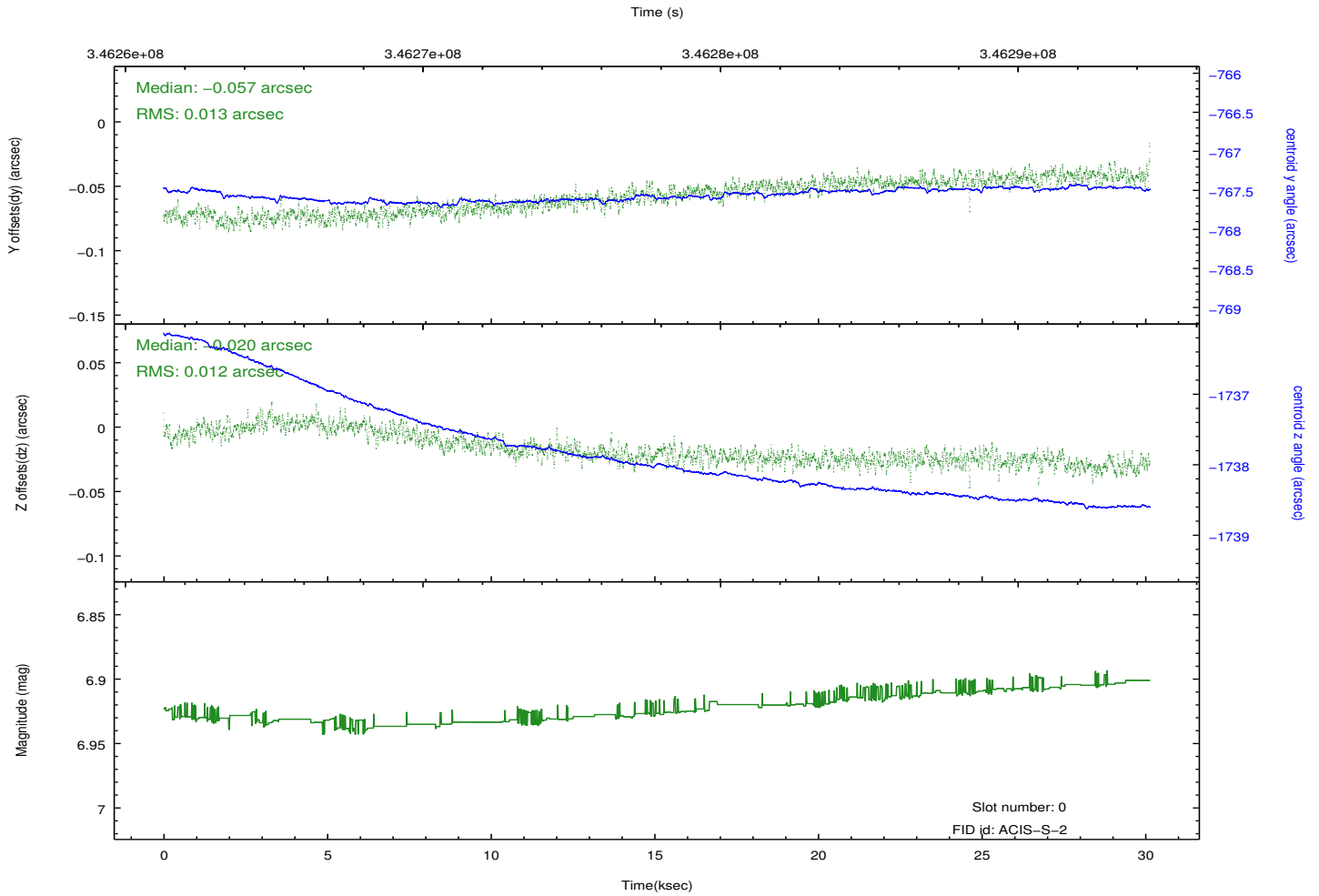
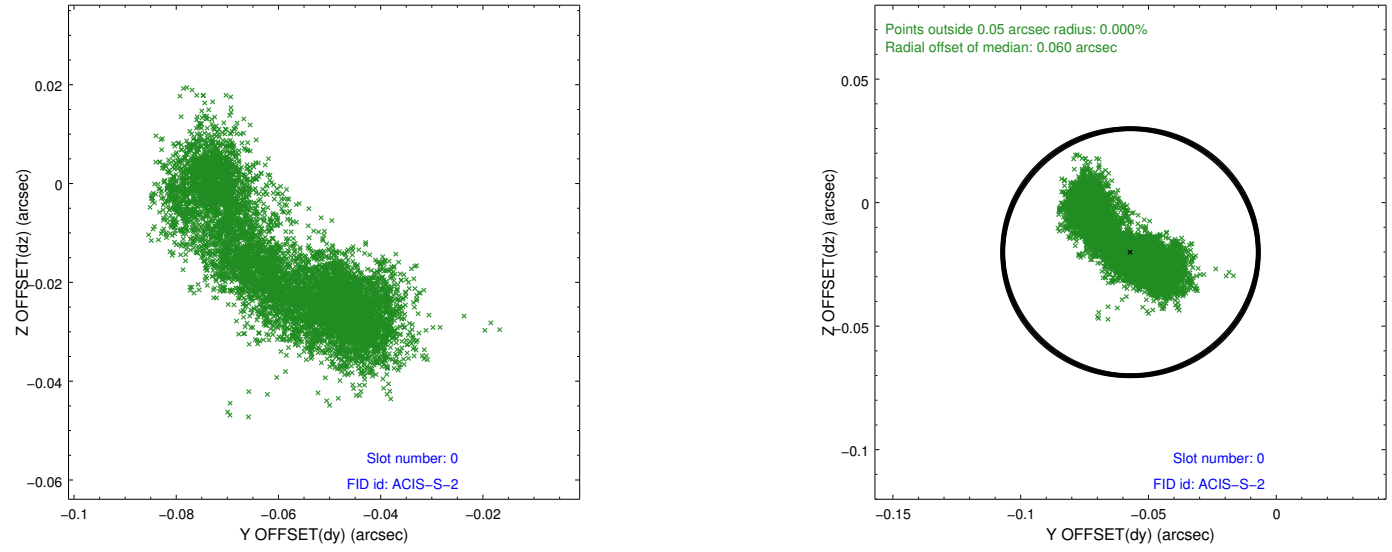


2.4.5 Slot 7

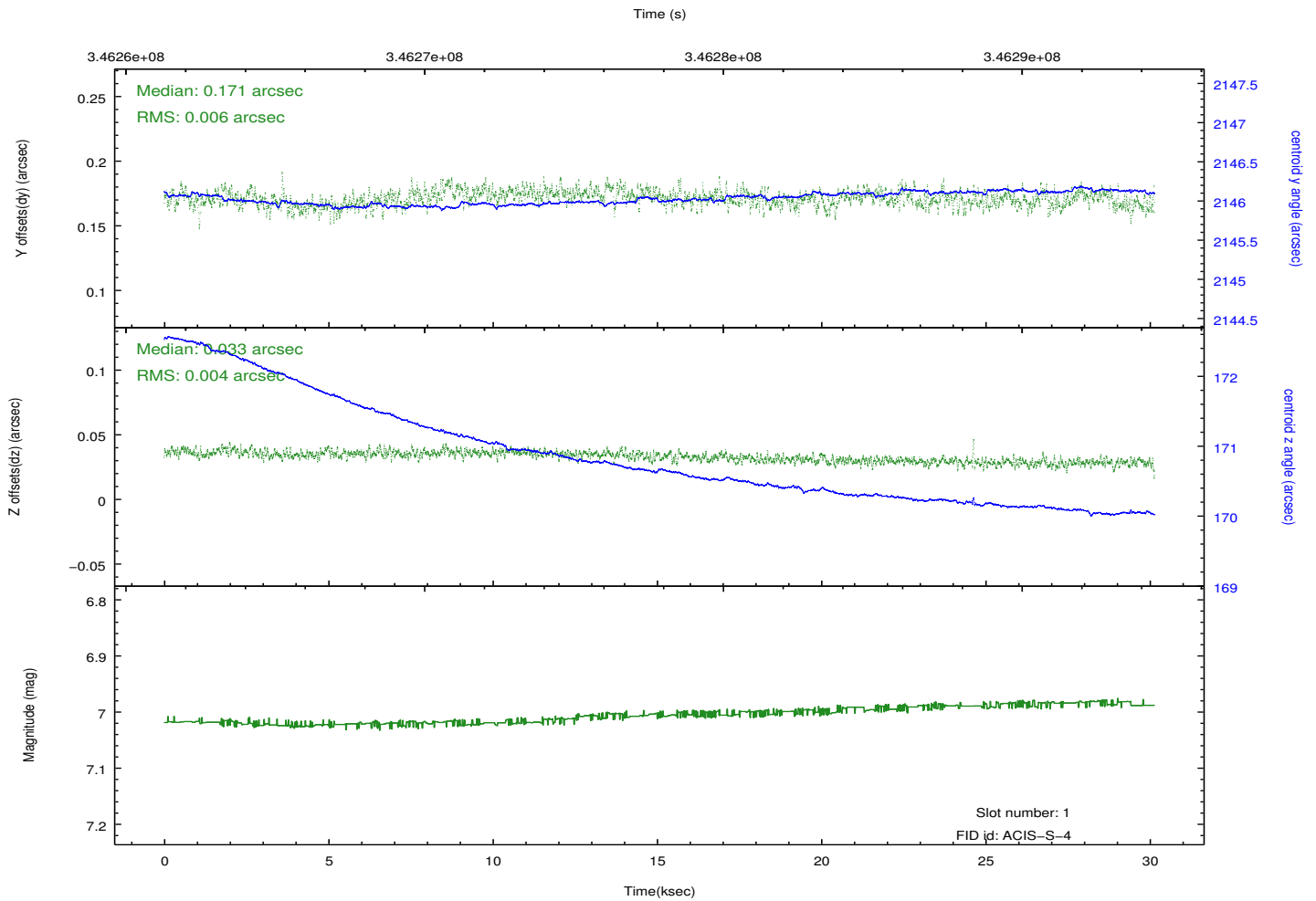
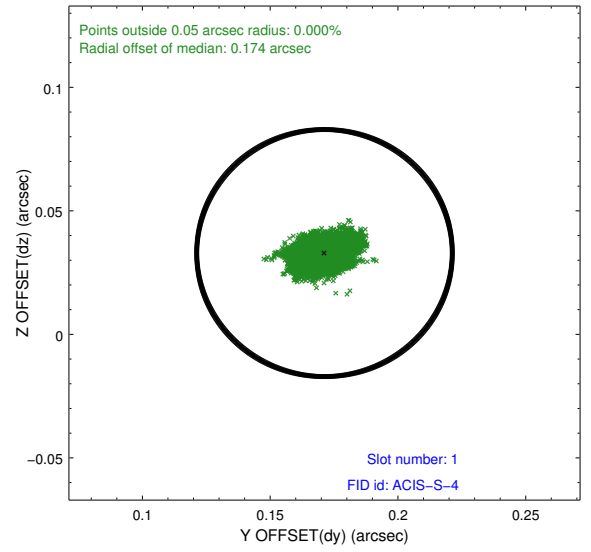
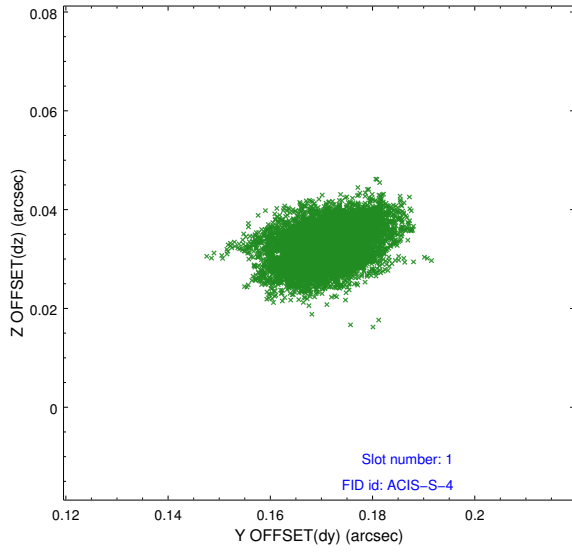


2.5 FID Slots

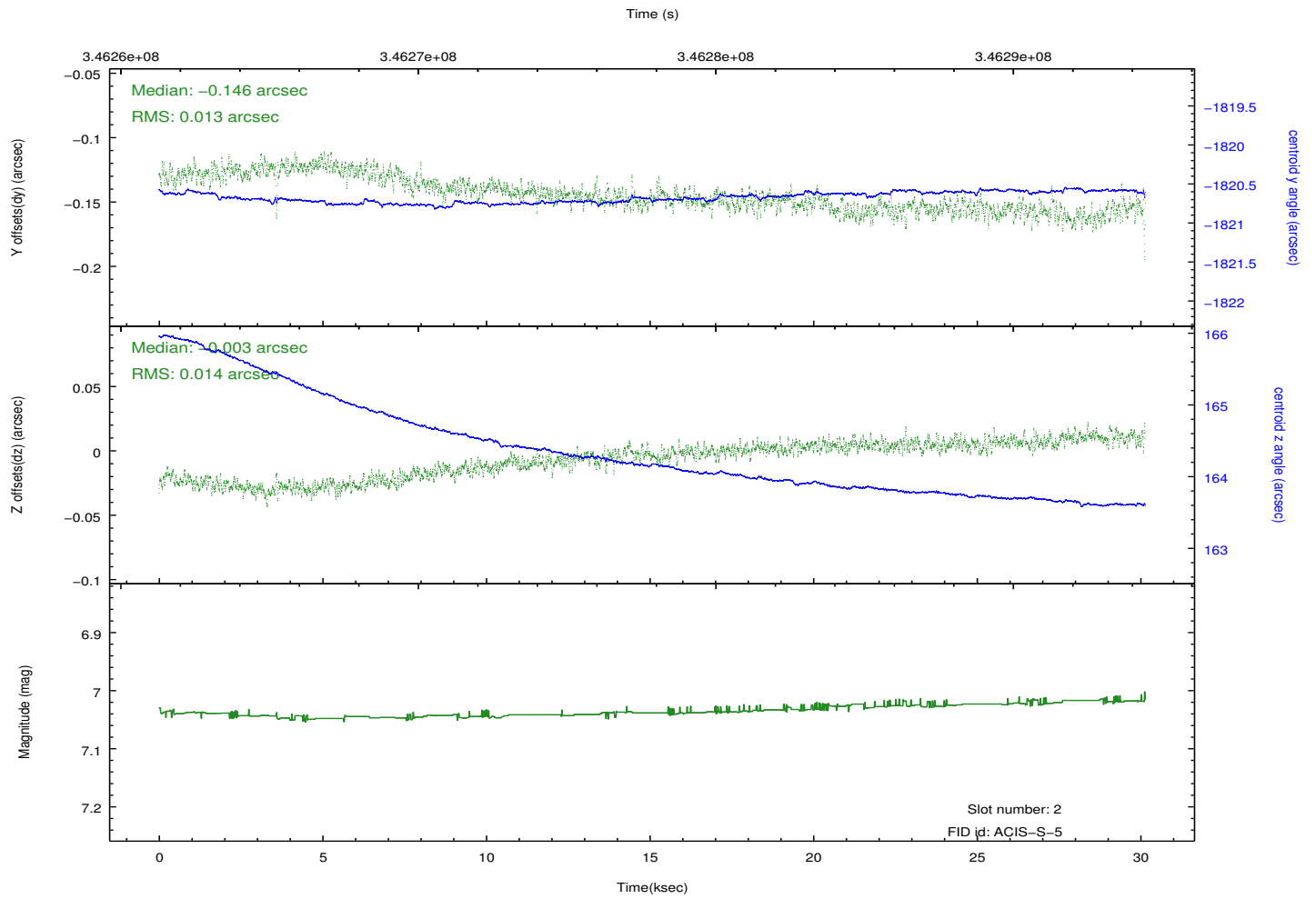
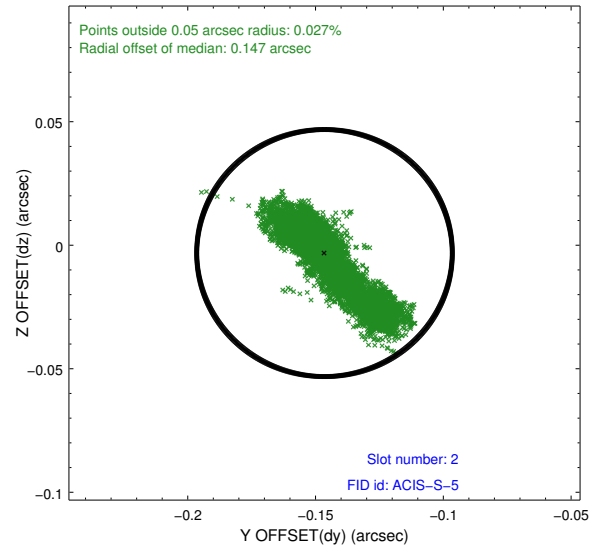
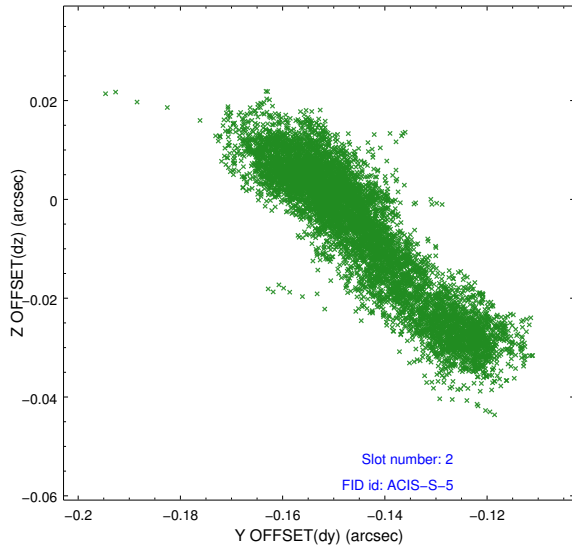
2.5.1 Slot 0



2.5.2 Slot 1



2.5.3 Slot 2

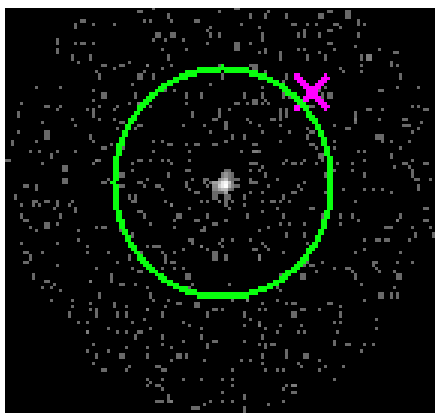


3 Gratings

3.1 HEG Arm



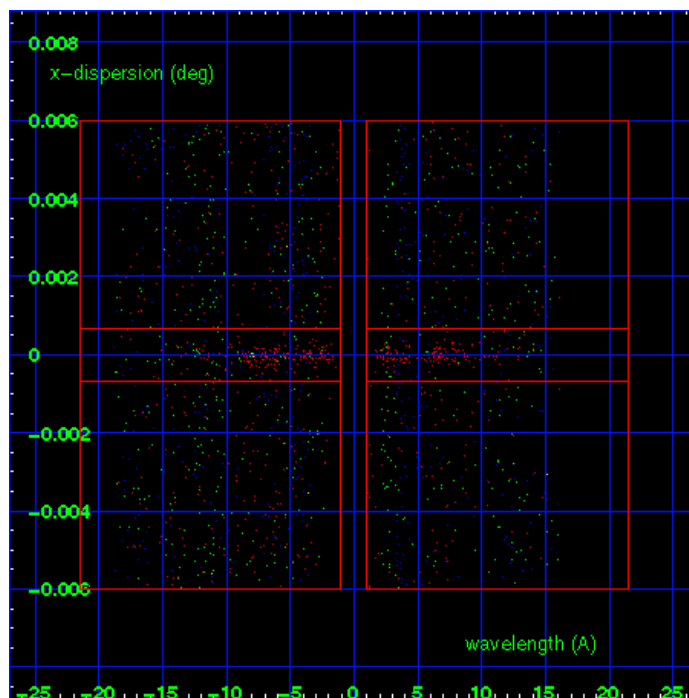
HEG Order Sort 123



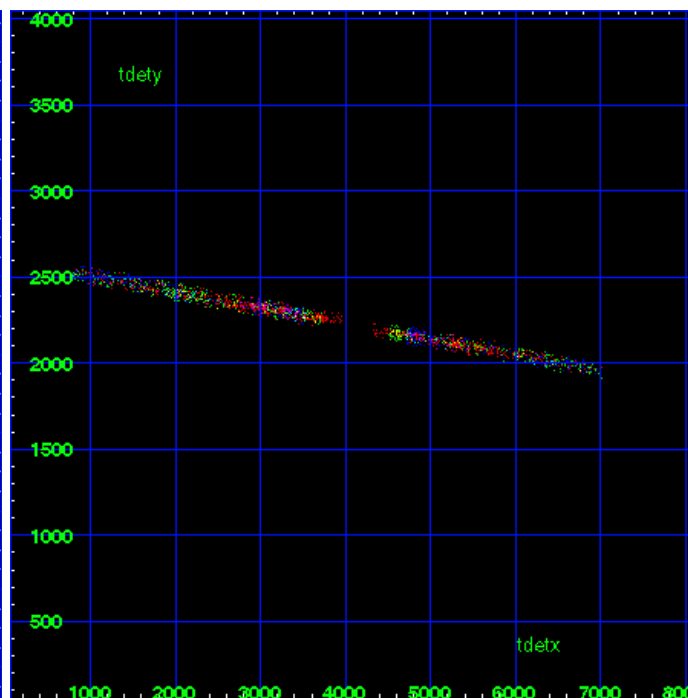
HEG Zero Order



HEG Order Sort ALL

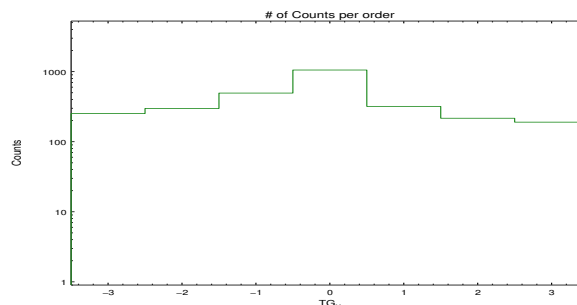


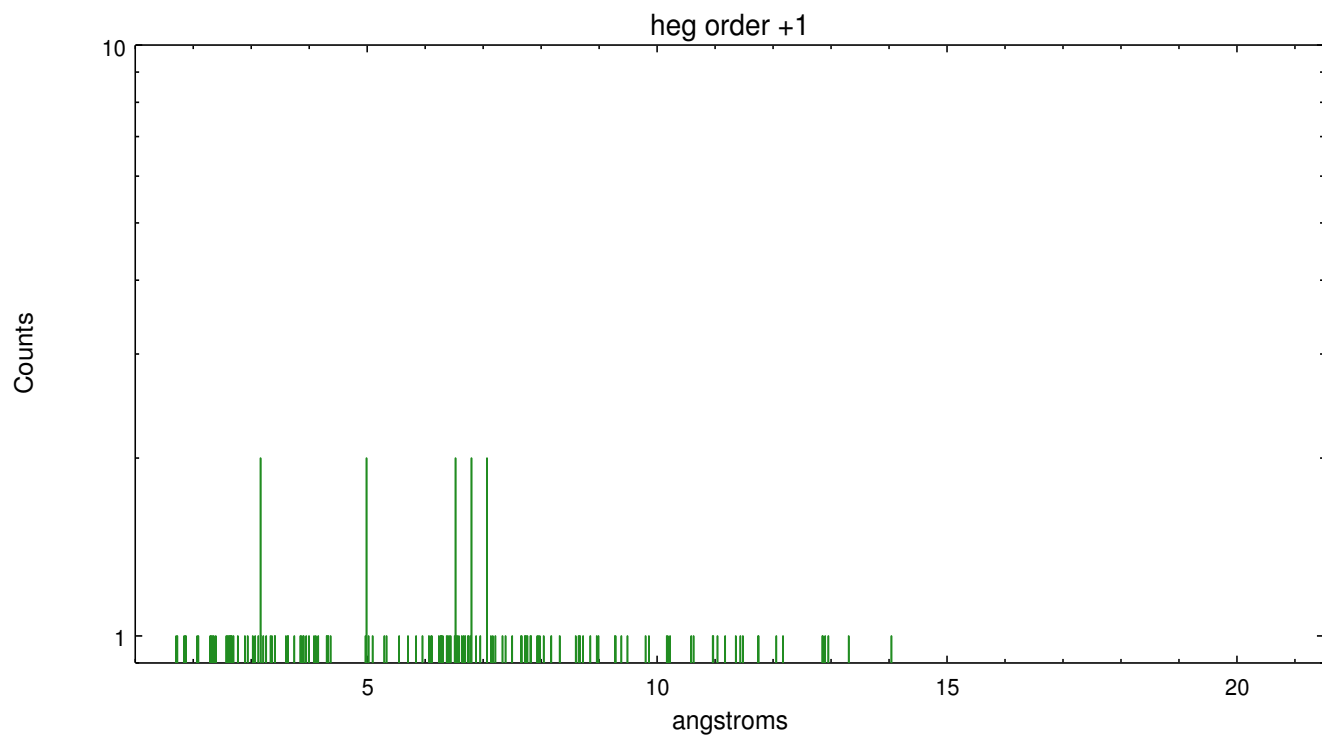
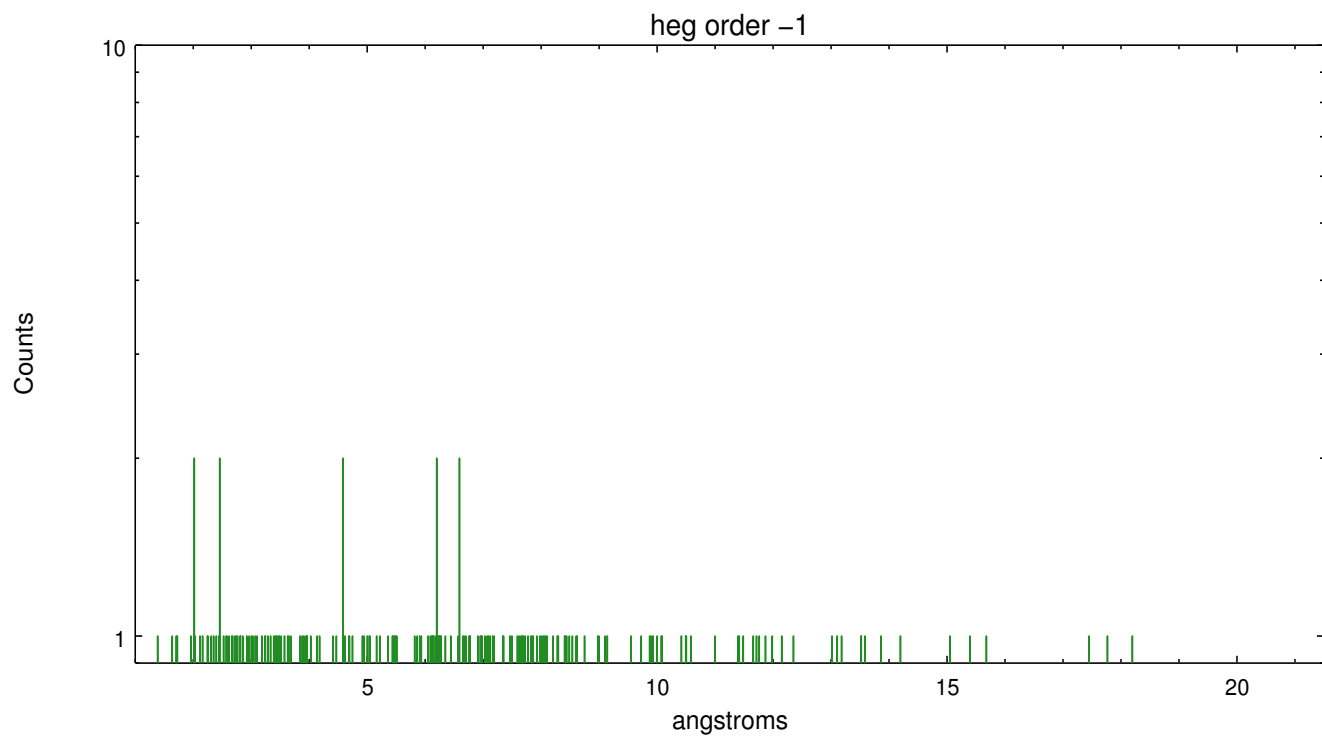
Spot Image HEG



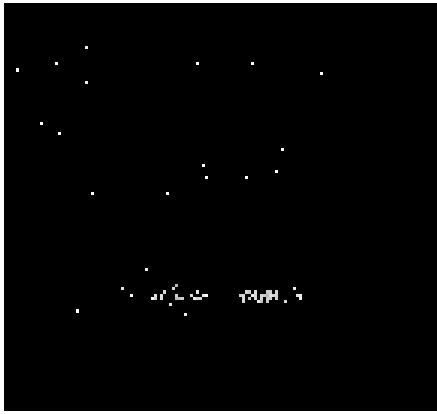
Full Detector HEG

	order -3	order -2	order -1	order 0	order 1	order 2	order 3
Events	252	298	494	1054	319	216	190

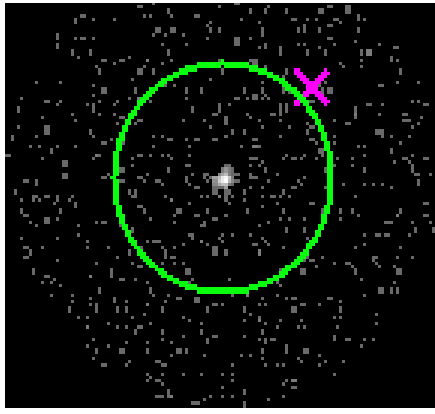




3.2 MEG Arm



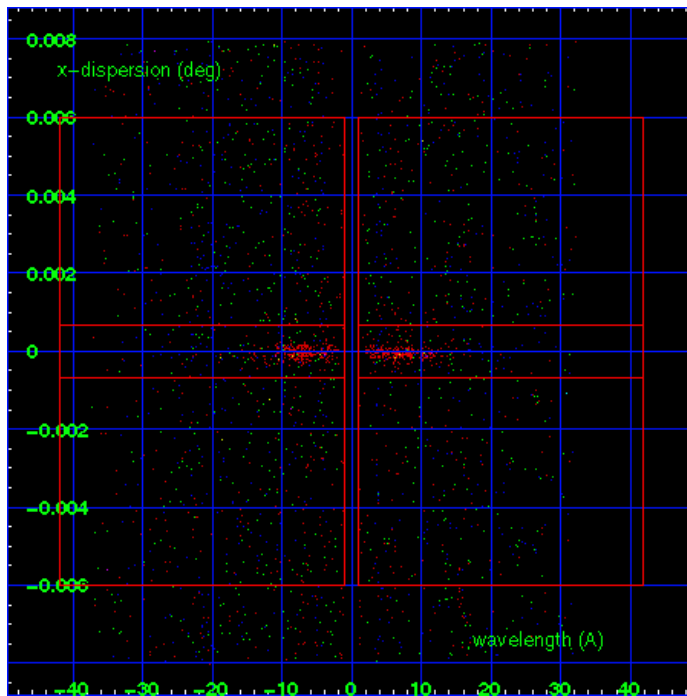
MEG Order Sort 123



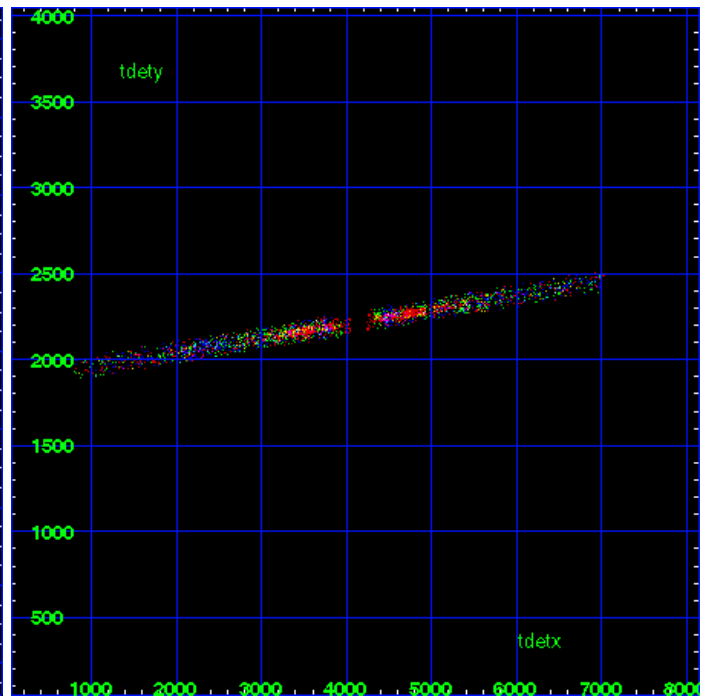
MEG Zero Order



MEG Order Sort ALL

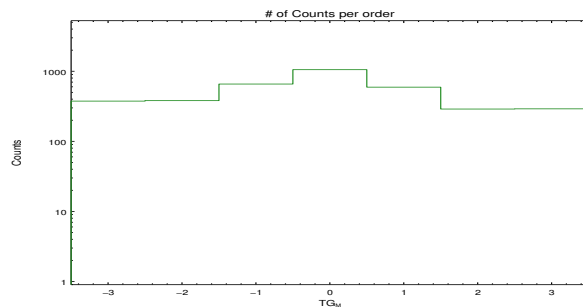


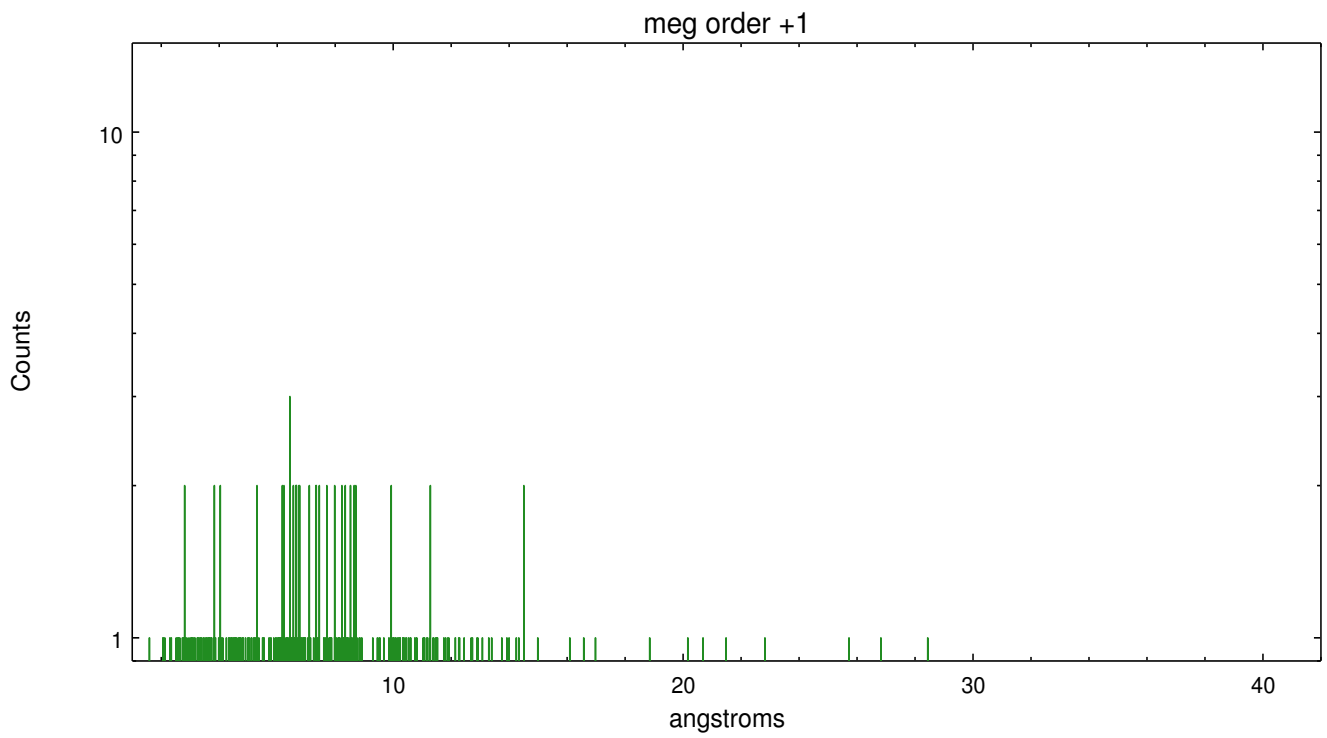
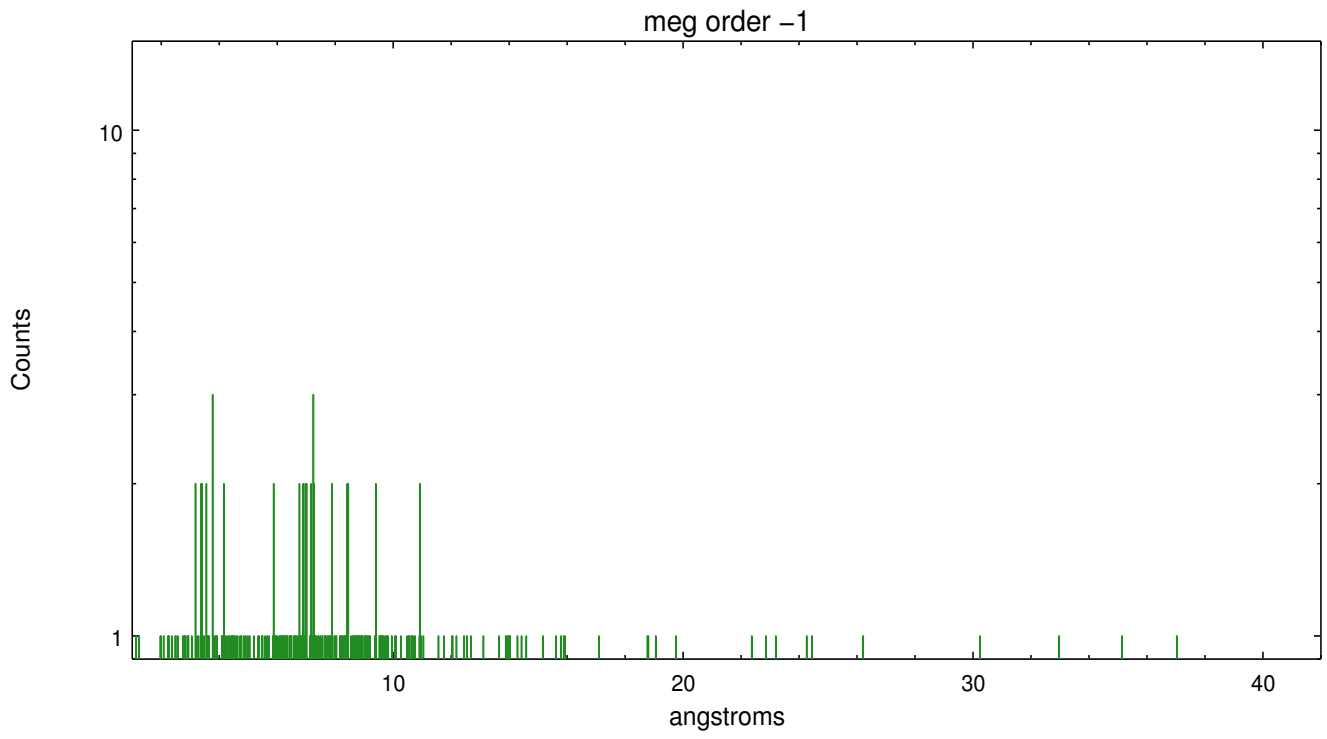
Spot Image MEG



Full Detector MEG

	order -3	order -2	order -1	order 0	order 1	order 2	order 3
Events	375	381	657	1054	593	289	291





A Summary

A.1 Status

V&V Scientist	Joy Nichols
V&V Date (YYYY-MM-DD)	2012.05.30
V&V Edition	1
V&V Disposition and Status	OK
V&V Charge Time	30.1407998

A.2 Comments