

V&V Reference Report

L2 ASCDS Version : 8.1.1

Observation 1086 - L2 Version 4
Chandra X-Ray Center

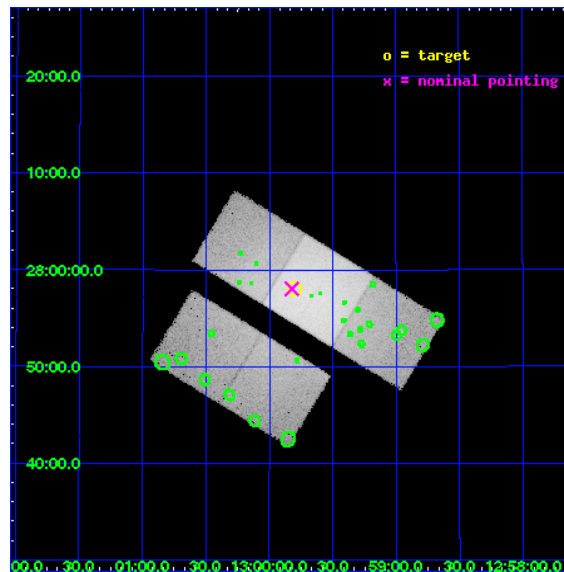
L2 Processing Date : Nov 21 2009

Contents

1	Front	2
2	OBI	3
2.1	OBI	3
2.1.1	Images	3
2.1.2	Bias	3
2.1.3	Parameters	4
2.1.4	Events	4
2.2	Compared Parameters	5
2.3	Aspect	6
2.4	Star Slots	9
2.4.1	Slot 3	9
2.4.2	Slot 4	10
2.4.3	Slot 5	11
2.4.4	Slot 6	12
2.4.5	Slot 7	13
2.5	FID Slots	14
2.5.1	Slot 0	14
2.5.2	Slot 1	15
2.5.3	Slot 2	16
3	Point Sources	17
A	Summary	18
A.1	Status	18
A.2	Comments	18

1 Front

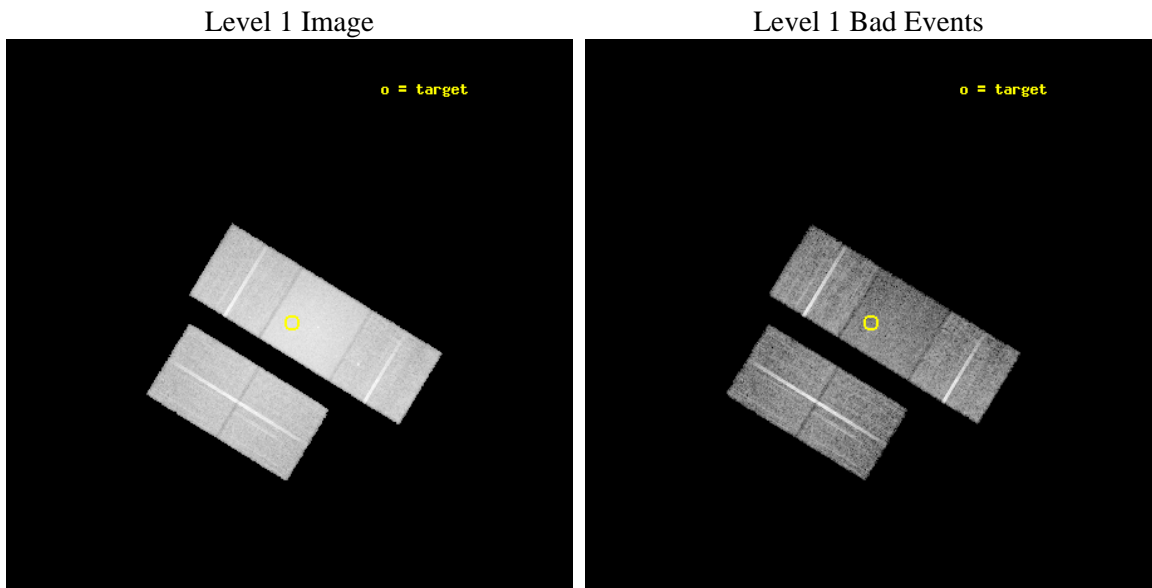
seq_num	880036	Sequence number
obs_id	1086	Observation id
title	 	Proposal title
observer	Dr. CXC Calibration	Principal investigator
object	COMA CLUSTER	Source name
dtcycle	0	
cycle	P	events from which exps? Prim/Second/Both
ra_targ	194.95	Observer's specified target RA
dec_targ	27.966667	Observer's specified target Dec
ra_nom	194.95563764426	Nominal RA
dec_nom	27.96743798925	Nominal Dec
roll_nom	31.43240899665	Nominal Roll
revision	4	Processing version of data
ontime	9756.7180986553	Sum of GTIs [s]
livetime	9633.1726592998	Livetime [s]
ontime2	9759.9590588808	Sum of GTIs [s]
ontime3	9759.9590488821	Sum of GTIs [s]
ontime6	9763.2000090927	Sum of GTIs [s]
ontime7	9756.7180986553	Sum of GTIs [s]
ontime8	9763.2000090927	Sum of GTIs [s]
l2events	325765	Number of level 2 events



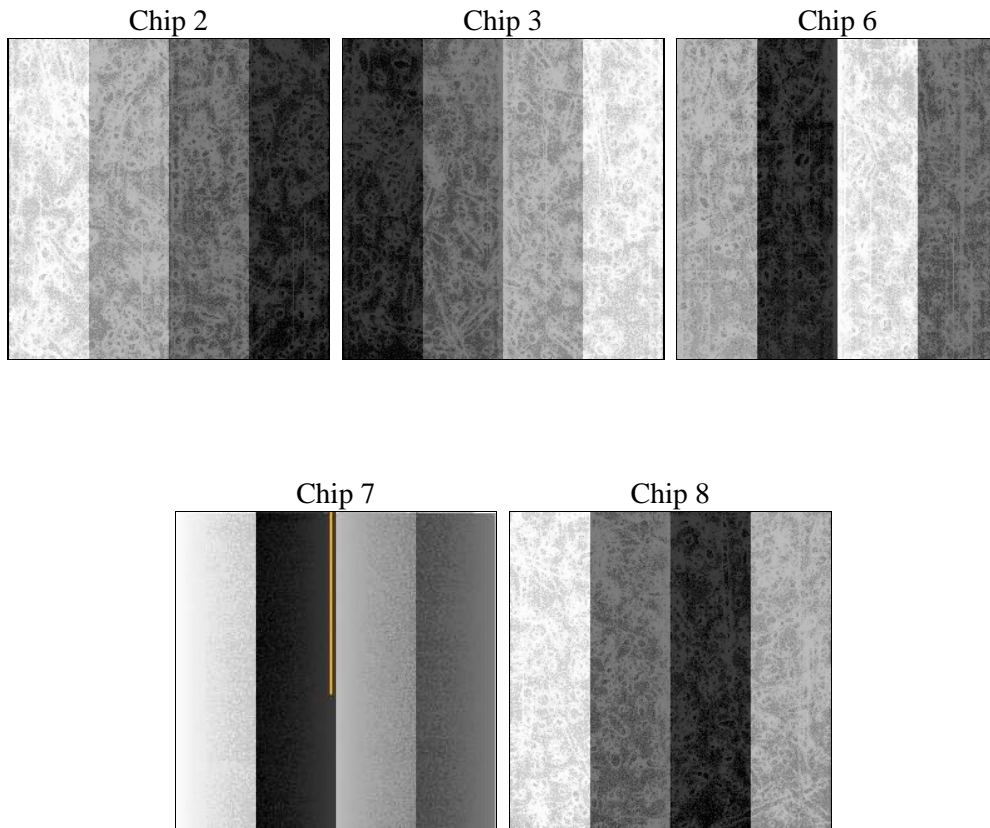
2 OBI

2.1 OBI

2.1.1 Images



2.1.2 Bias



2.1.3 Parameters

obi_num	1	Obi number	sched_exp_time	10000.000000	Scheduled observation exposure time
ascdsver	8.1.1	ASCDS version number	ontime	9756.7180986553	Sum of GTIs [s]
caldbver	4.1.4	 	ontime2	9759.9590588808	Sum of GTIs [s]
date	2009-11-21T09:54:05	Date and time of file creation	ontime3	9759.9590488821	Sum of GTIs [s]
revision	3	Processing version of data	ontime6	9763.2000090927	Sum of GTIs [s]
			ontime7	9756.7180986553	Sum of GTIs [s]
			ontime8	9763.2000090927	Sum of GTIs [s]
			l1events	740526	Number of level 1 events

2.1.4 Events

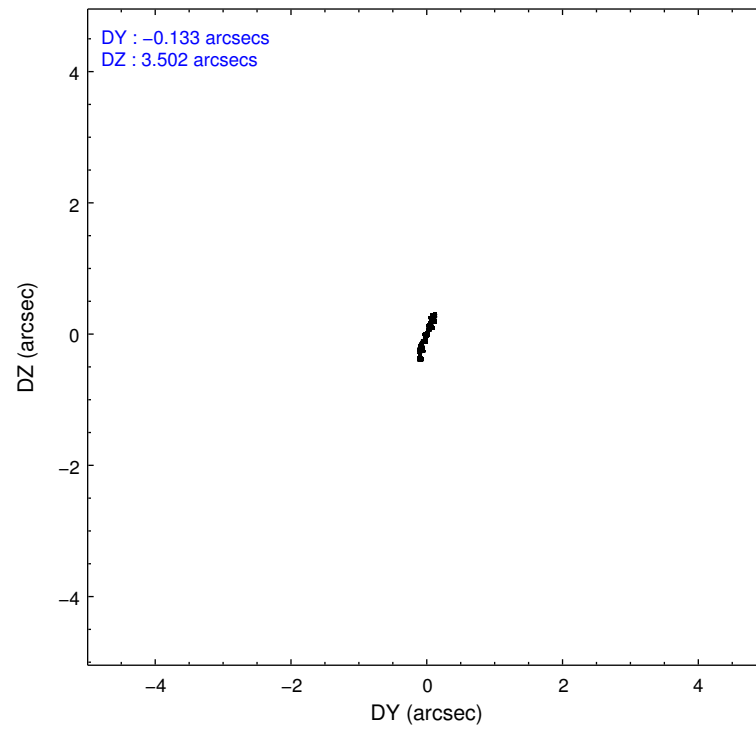
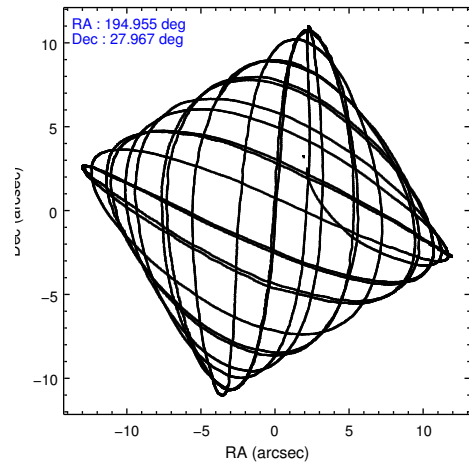
	ccd 2	ccd 3	ccd 6	ccd 7	ccd 8
level 1 events	115221	118657	137801	229919	138928
rejected events	83043	81090	87506	60470	88487
rejected %	72%	68%	63%	26%	63%

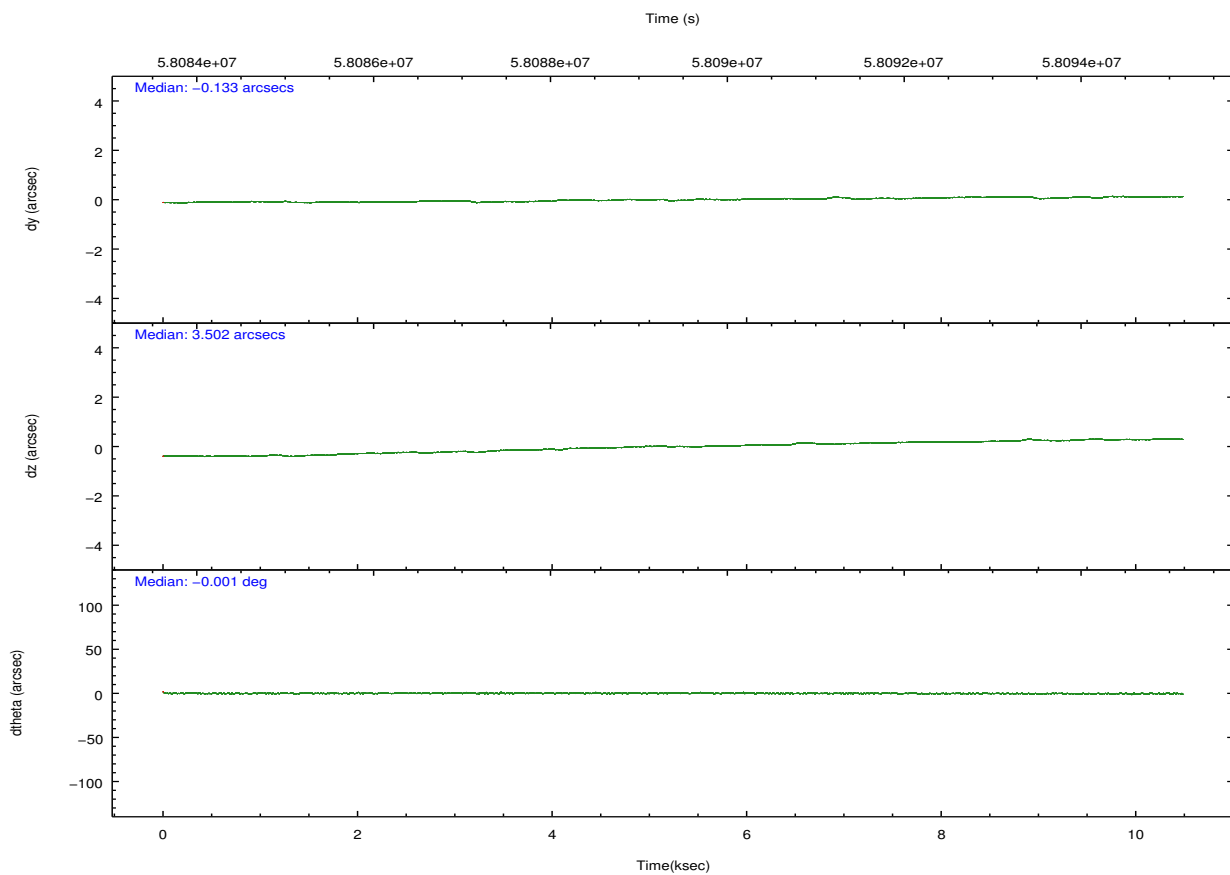
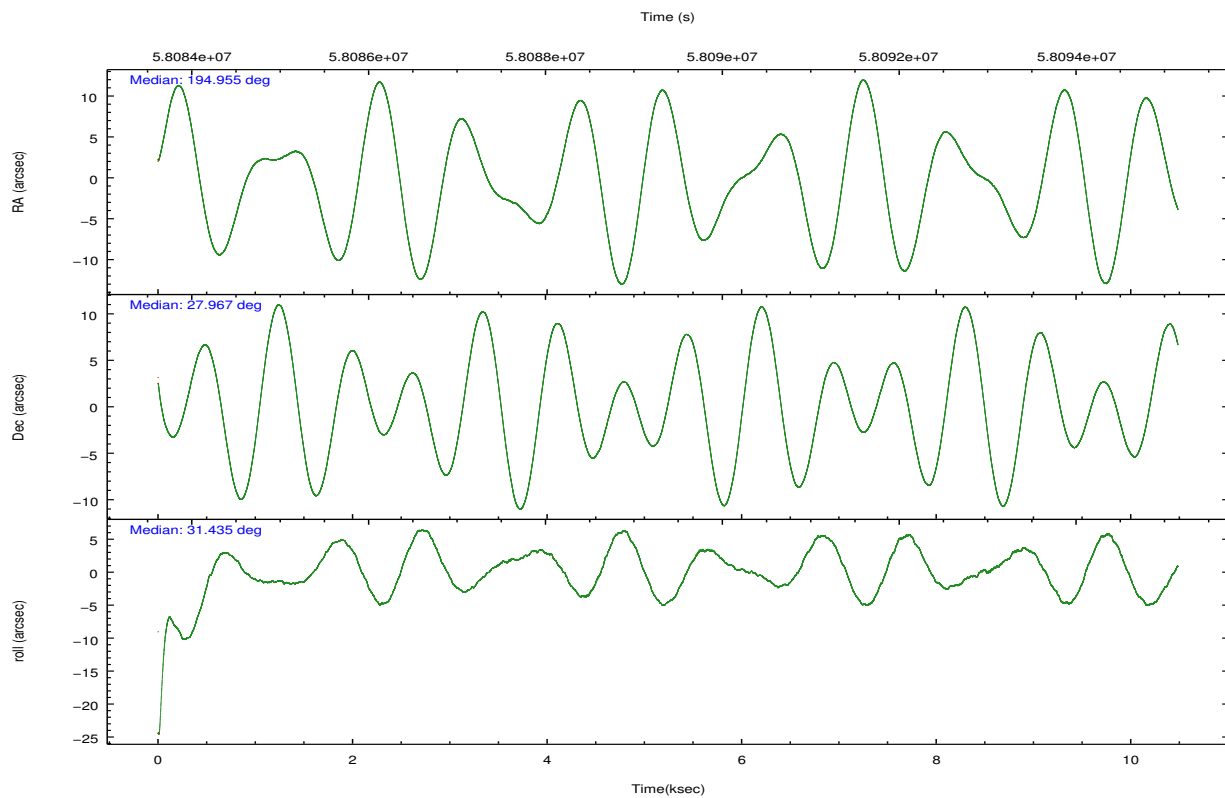
	ccd 2	ccd 3	ccd 6	ccd 7	ccd 8
grade 0 events	17566	21360	26770	42951	27594
	15%	18%	19%	18%	19%
grade 1 events	49	83	77	74	108
	0%	0%	0%	0%	0%
grade 2 events	9823	11019	17123	44019	12474
	8%	9%	12%	19%	8%
grade 3 events	1061	1164	1303	16598	2252
	0%	0%	0%	7%	1%
grade 4 events	992	1129	1281	15890	2114
	0%	0%	0%	6%	1%
grade 5 events	1574	1767	2040	6597	2569
	1%	1%	1%	2%	1%
grade 6 events	2743	2909	3839	50055	6020
	2%	2%	2%	21%	4%
grade 7 events	81413	79226	85368	53735	85797
	70%	66%	61%	23%	61%

2.2 Compared Parameters

Parameter	Planned	Actual	Parameter	Planned	Actual
Instrument	ACIS	ACIS	Obspar format version number	6	6
Detector	ACIS-23678	ACIS-23678	Obspar file type	PREDICTED	ACTUAL
Grating	NONE	NONE	Obspar update status	NONE	UPDATED
Data mode	FAINT	FAINT	Number of optional ACIS chips dropped	0	0
Observation mode	POINTING	POINTING	On-chip summing requested	N	N
Pointing RA	194.940508	194.9556376442563	Subarray requested	NONE	NONE
Pointing Dec	27.943242	27.96743798925047	Alternating exposures requested	N	N
Pointing Roll	31.282904	31.43240899665028	Primary exposure time	0.000000	3.2
SIM focus pos (mm)	-0.684267	-0.6828225247311905			
SIM defocus (mm)	0	0.001444936568705701			
SIM translation stage pos (mm)	-193.757263	-193.7606800841183			
SIM translation stage offset (mm)	3.62474	3.628157501110479			
Observation start time	58084630.184000	58083572.317451			
Observation start date	1999-11-04T06:36:06	1999-11-04T06:19:32			
Observation end time	58094630.184000	58094764.292855			
Observation end date	1999-11-04T09:22:46	1999-11-04T09:26:04			
Read mode	TIMED	TIMED			

2.3 Aspect



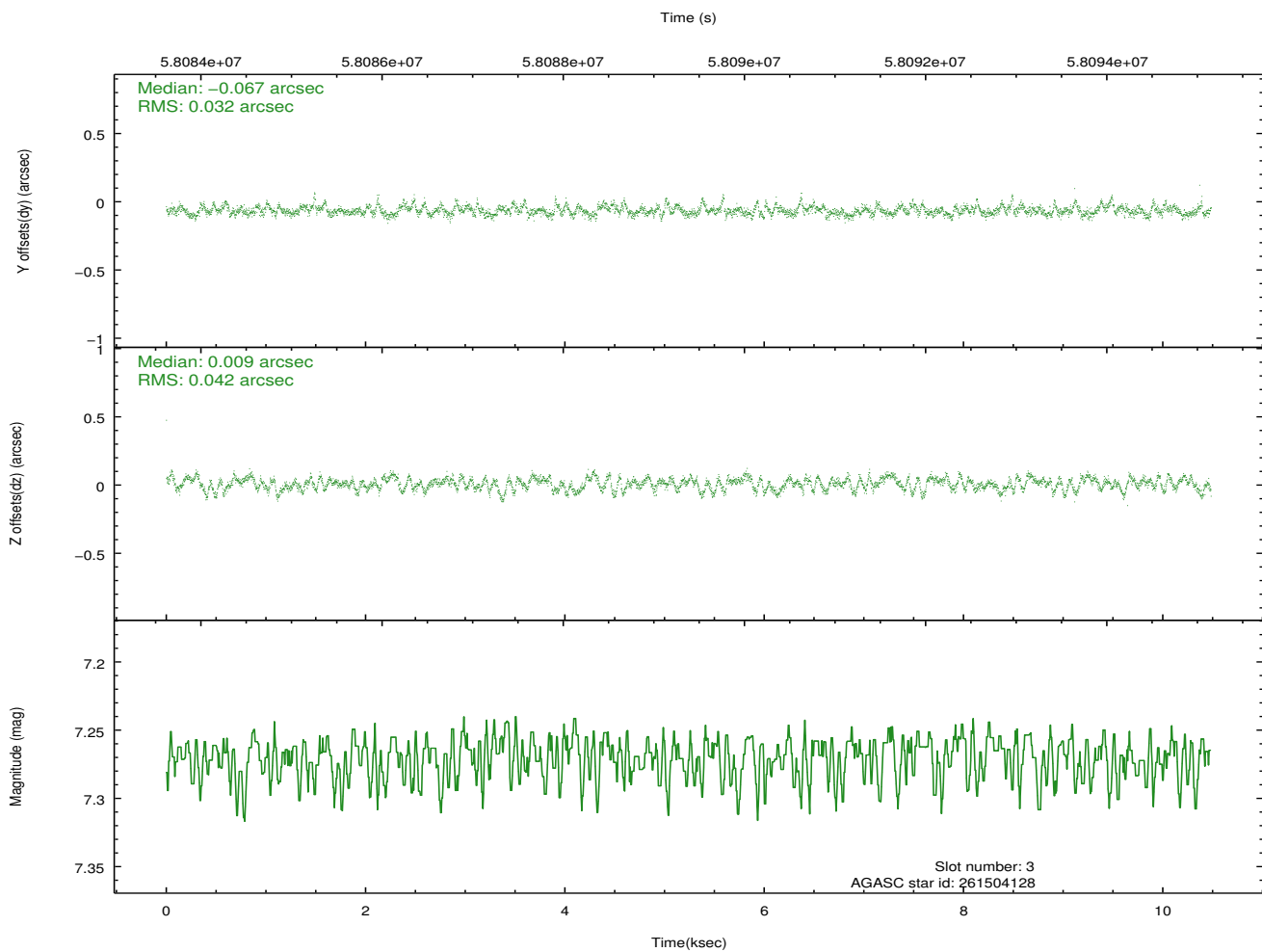
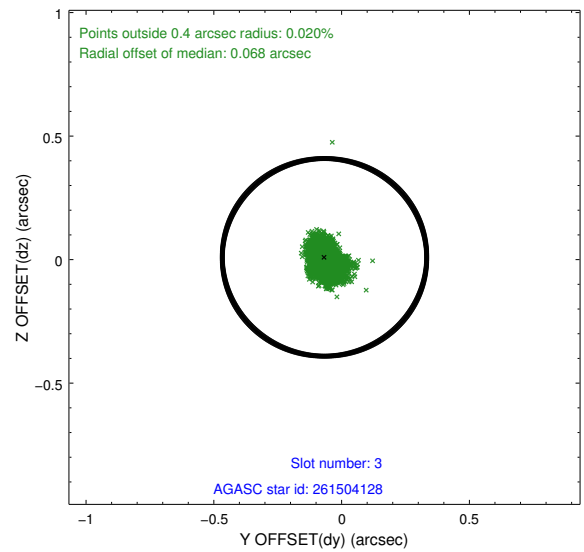
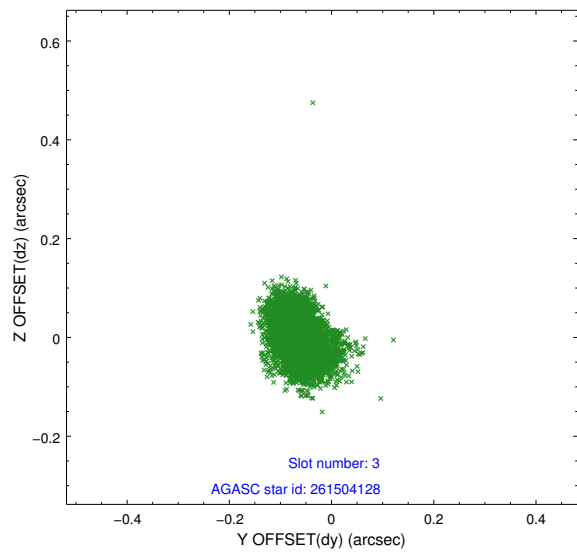


Slot Statistics

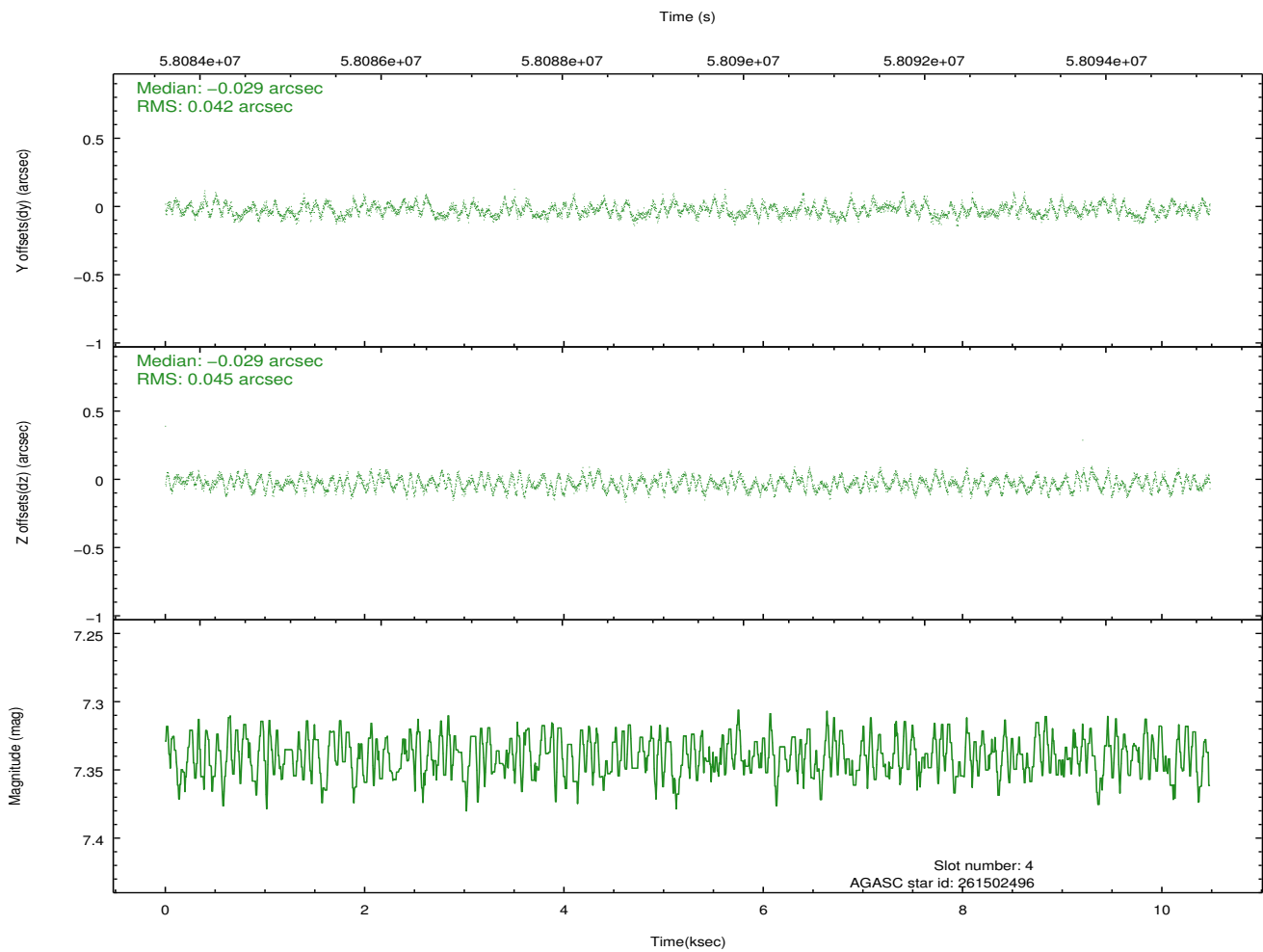
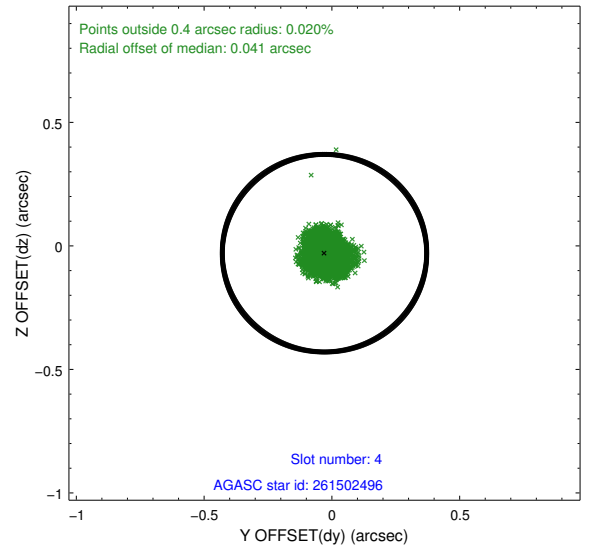
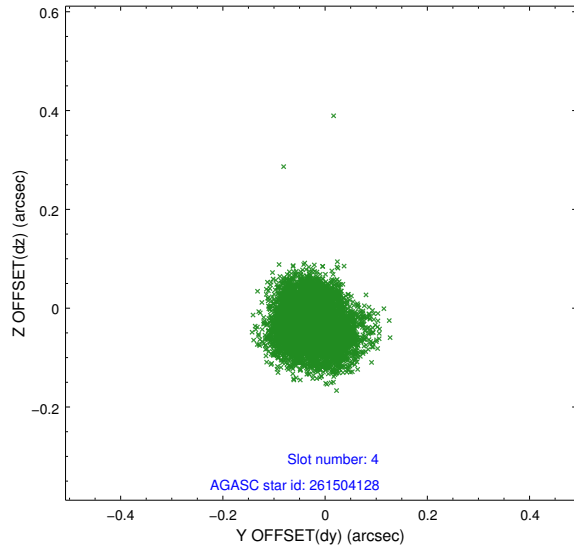
slot	status	id	mag	n_pts	med_dy	med_dz	dr1	dr2	ra	dec	mean_y	mean_z
0	FID	ACIS-S-2	7.13	5112	0.039	0.038	0.008	0.013	0.000000	0.000000	-752.70	-1649.83
1	FID	ACIS-S-4	7.22	5110	0.018	-0.029	0.006	0.012	0.000000	0.000000	2160.58	258.27
2	FID	ACIS-S-5	7.24	5111	-0.088	-0.001	0.007	0.012	0.000000	0.000000	-1805.35	252.38
3	GUIDE	261504128	7.27	5110	-0.067	0.009	0.056	0.092	194.640935	28.319570	-106.46	1651.83
4	GUIDE	261502496	7.34	5110	-0.029	-0.029	0.068	0.101	194.887297	28.065668	85.20	464.79
5	GUIDE	261498392	8.30	5112	0.002	0.011	0.051	0.082	194.888587	28.238913	412.87	995.33
6	GUIDE	261492080	9.29	5113	-0.068	-0.036	0.094	0.158	194.976344	28.631585	1384.47	2059.15
7	GUIDE	261505232	9.78	5107	0.166	0.048	0.115	0.179	194.216553	27.802521	-2228.45	770.59

2.4 Star Slots

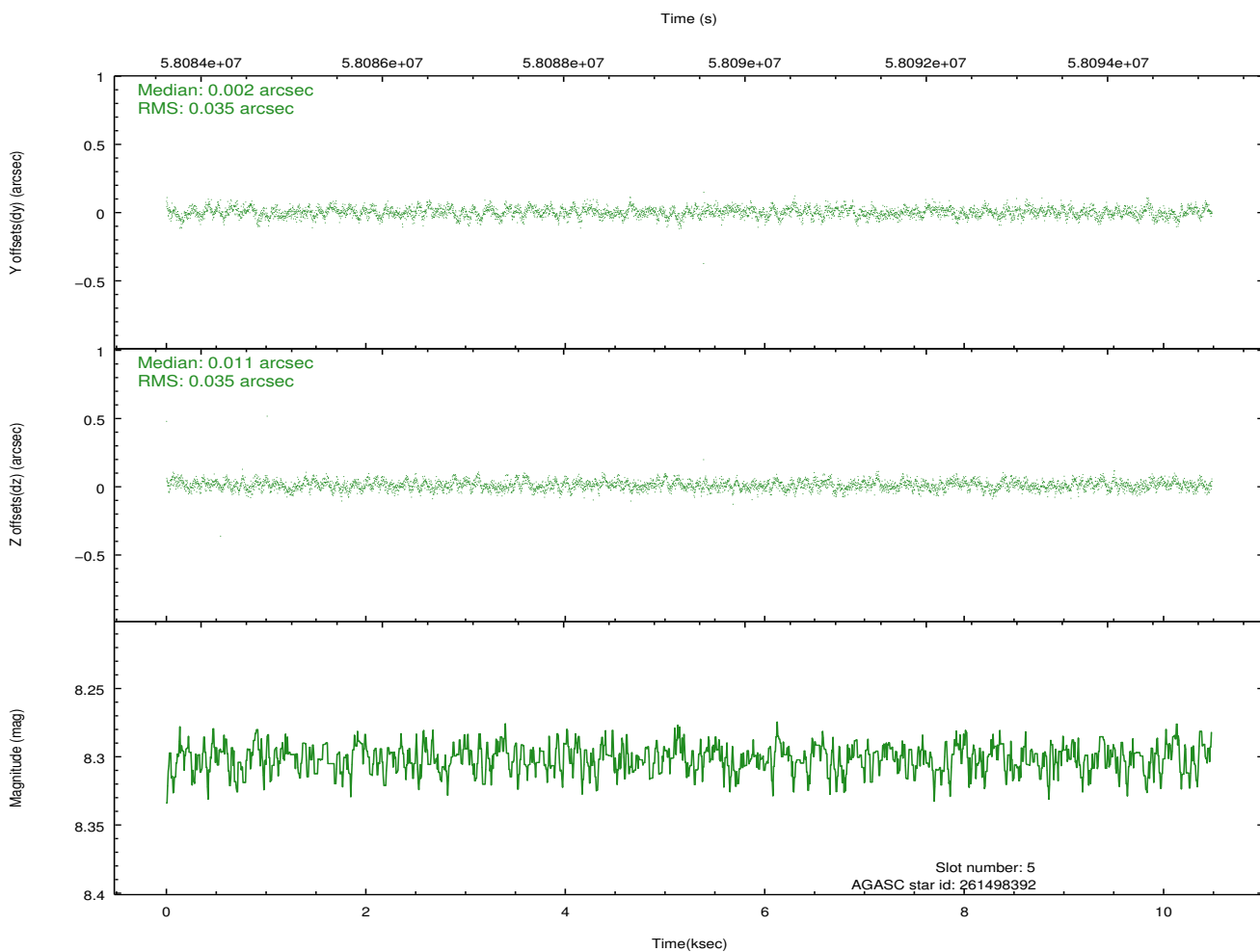
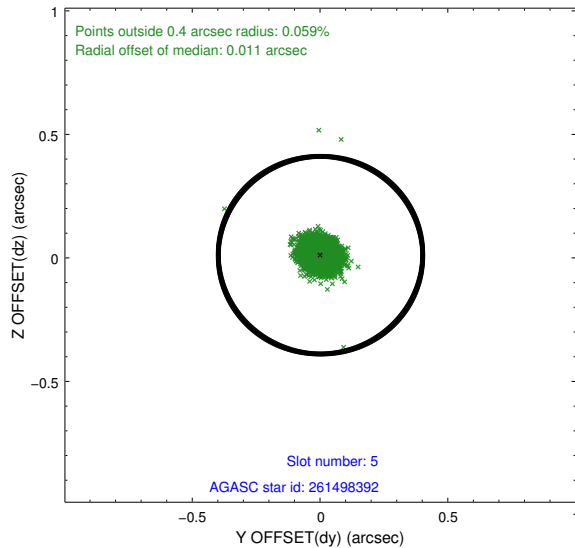
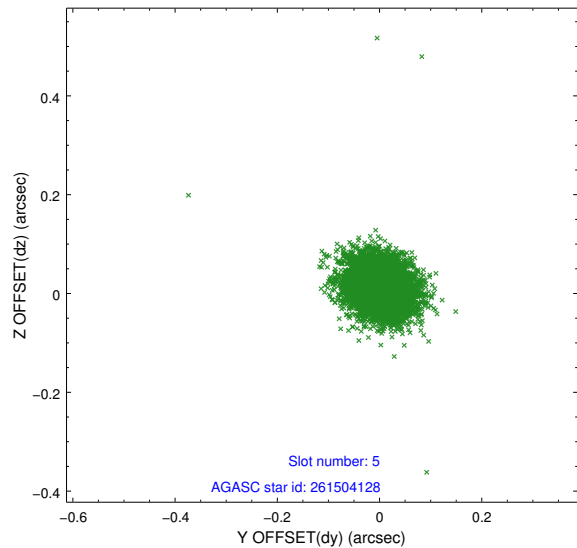
2.4.1 Slot 3



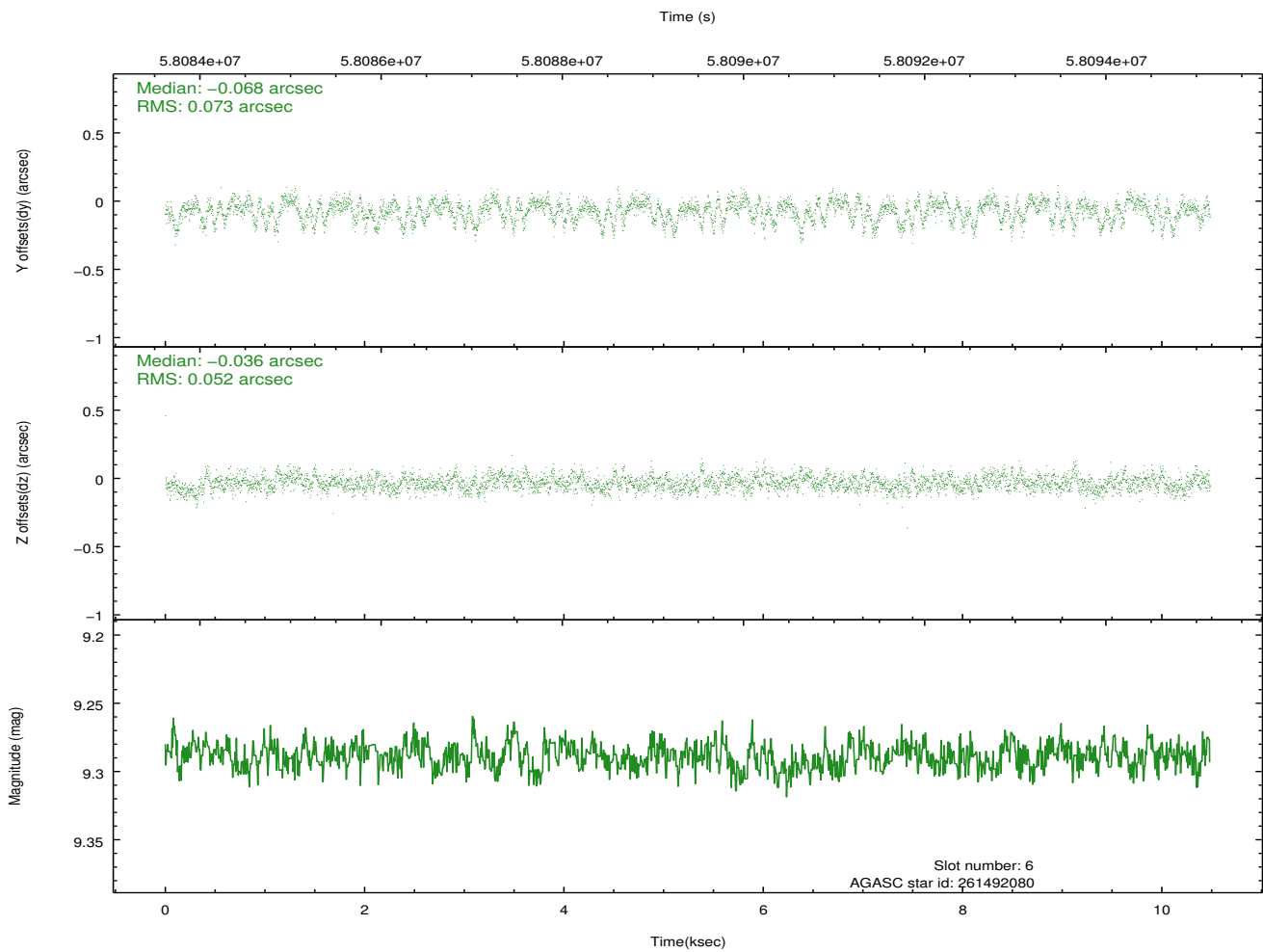
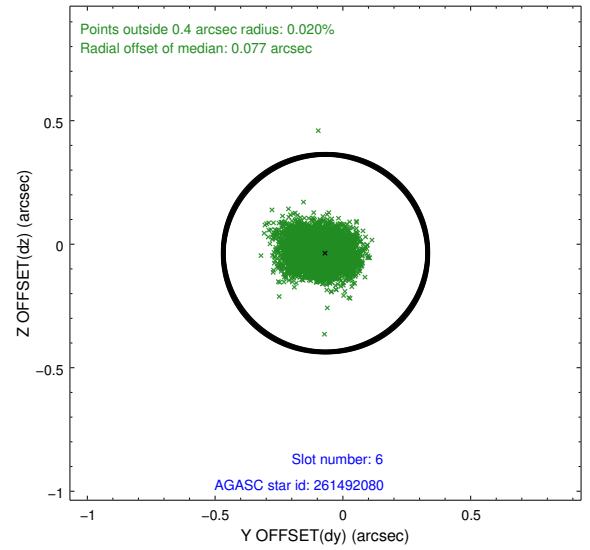
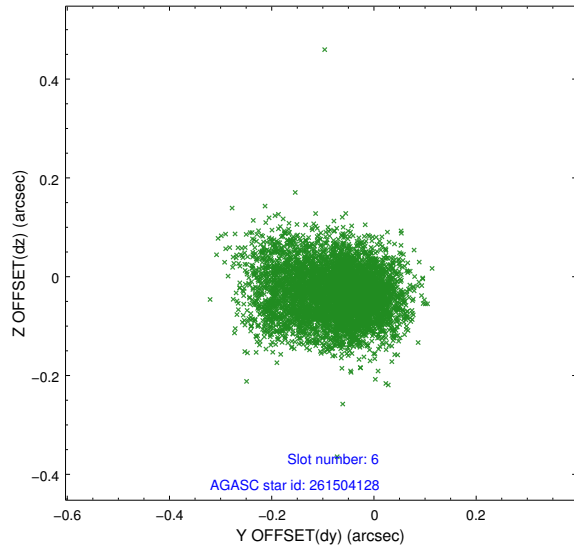
2.4.2 Slot 4



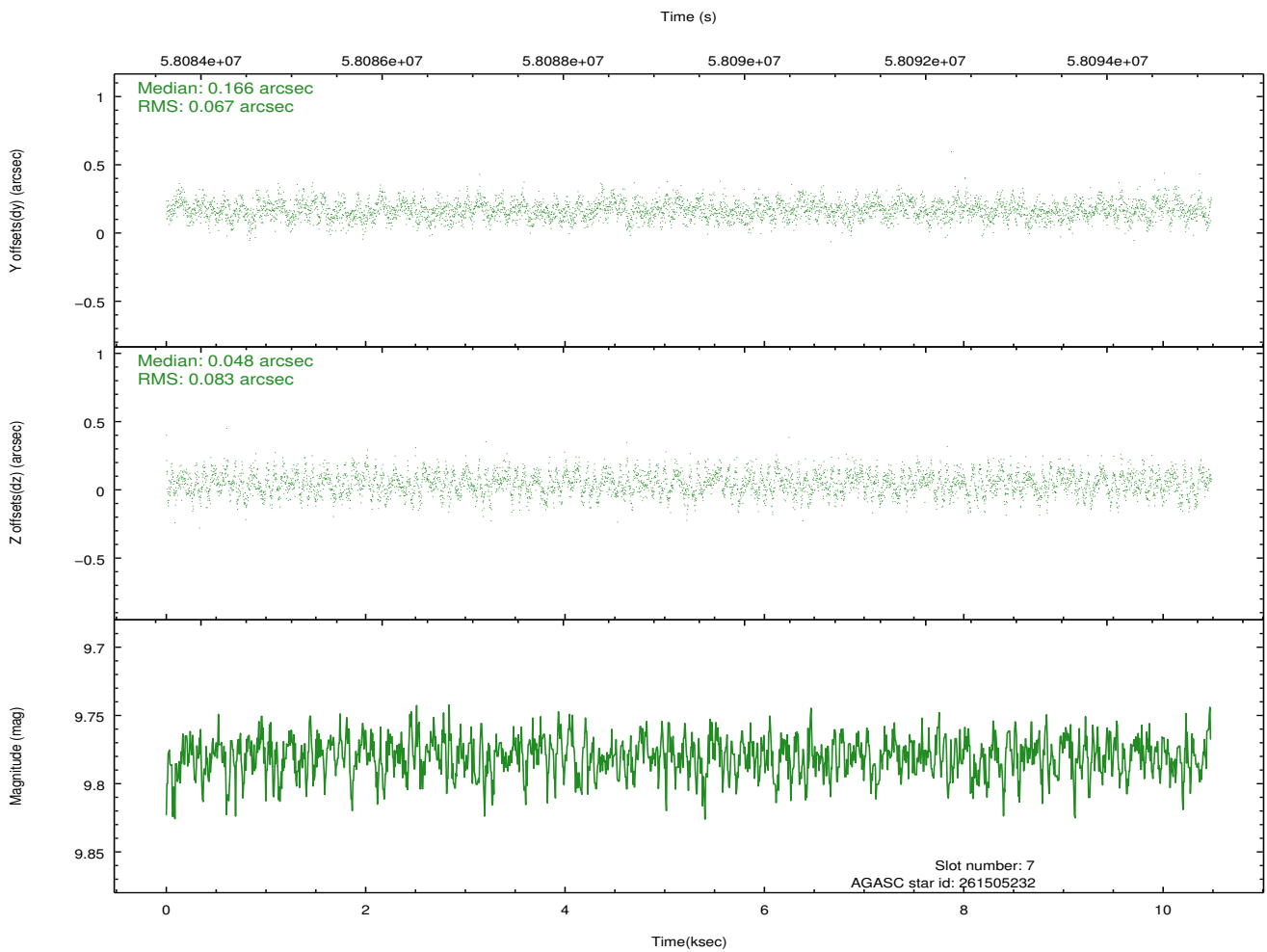
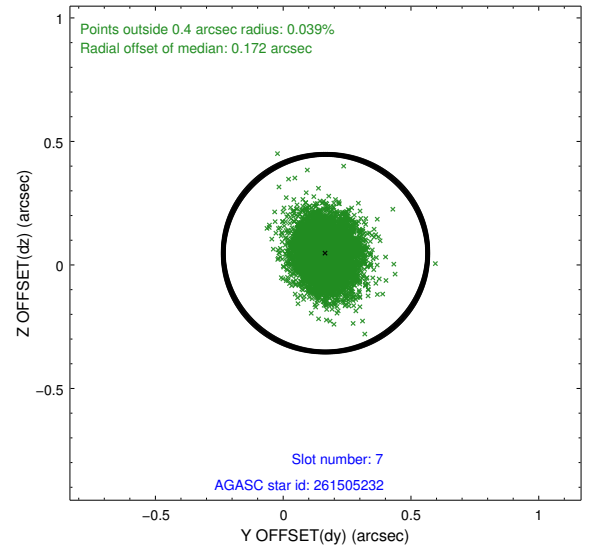
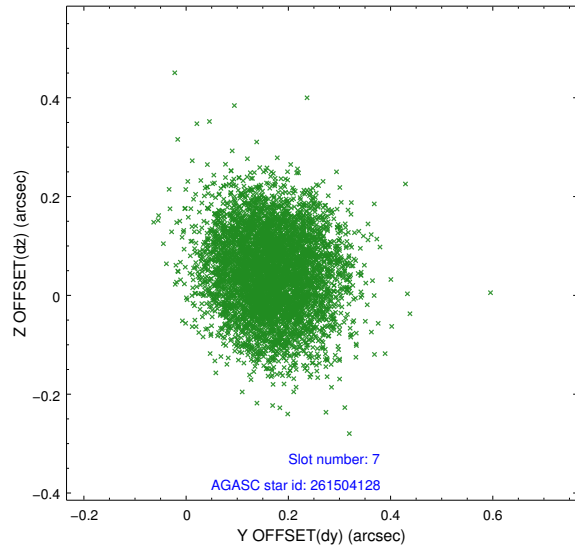
2.4.3 Slot 5



2.4.4 Slot 6

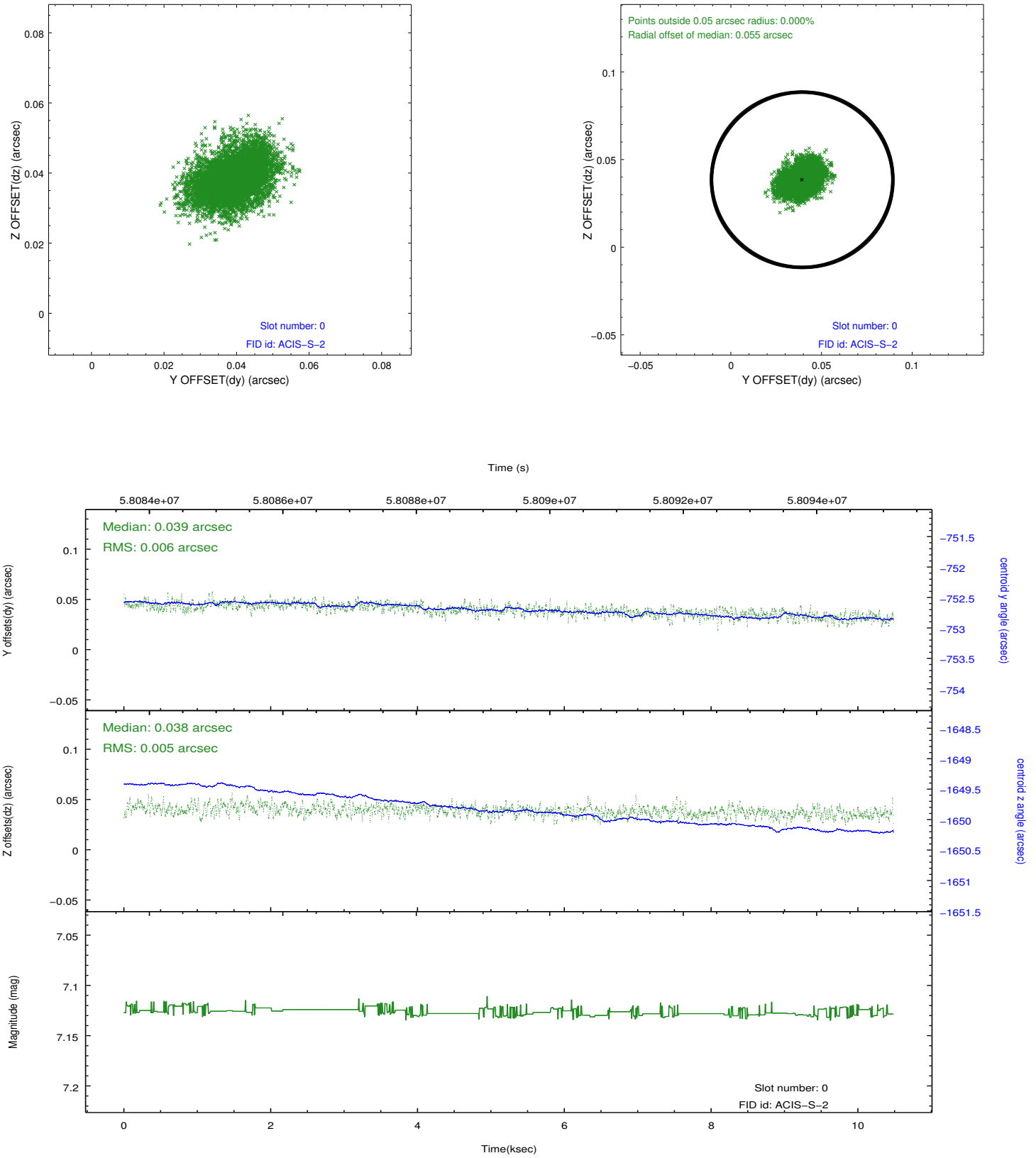


2.4.5 Slot 7

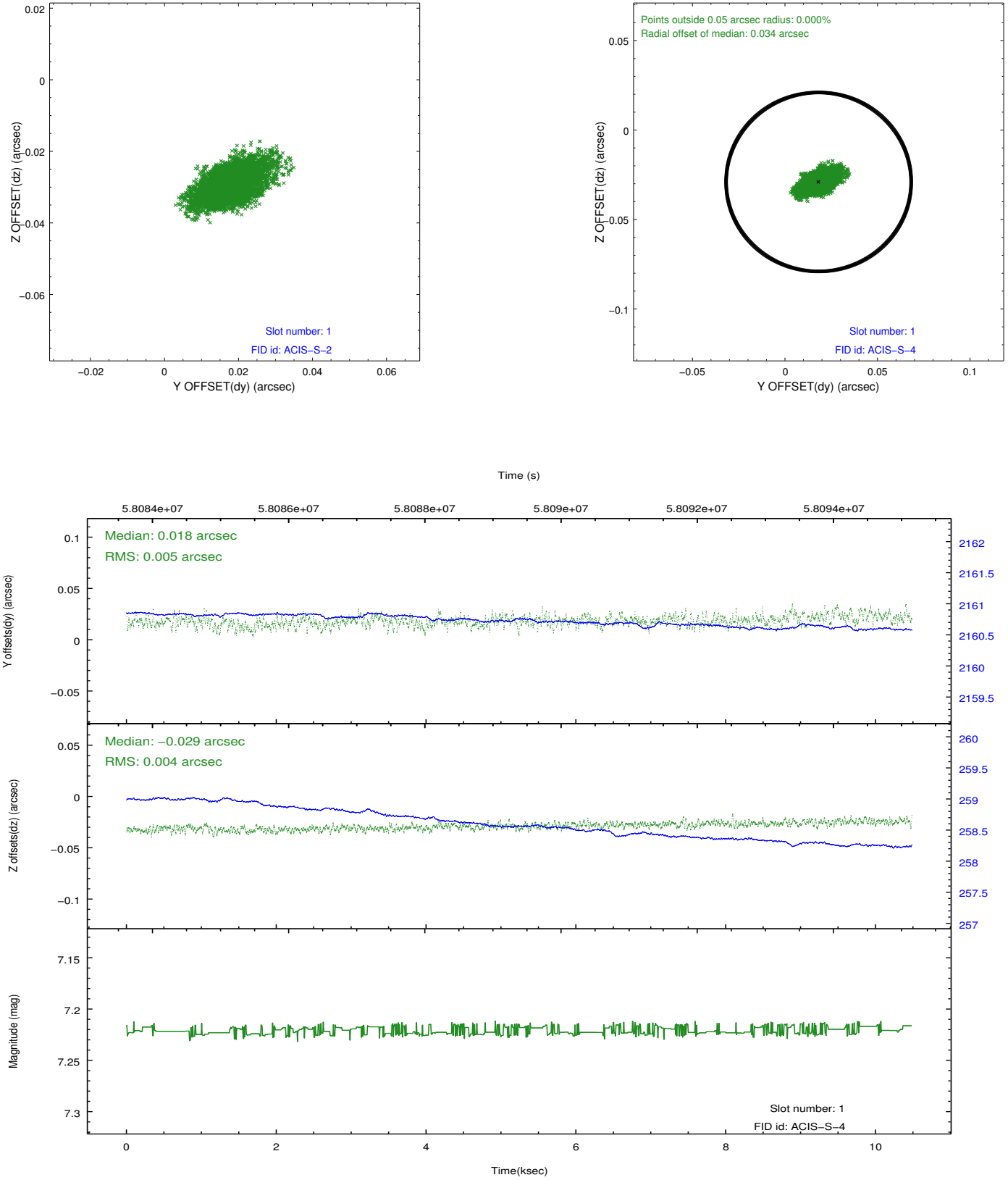


2.5 FID Slots

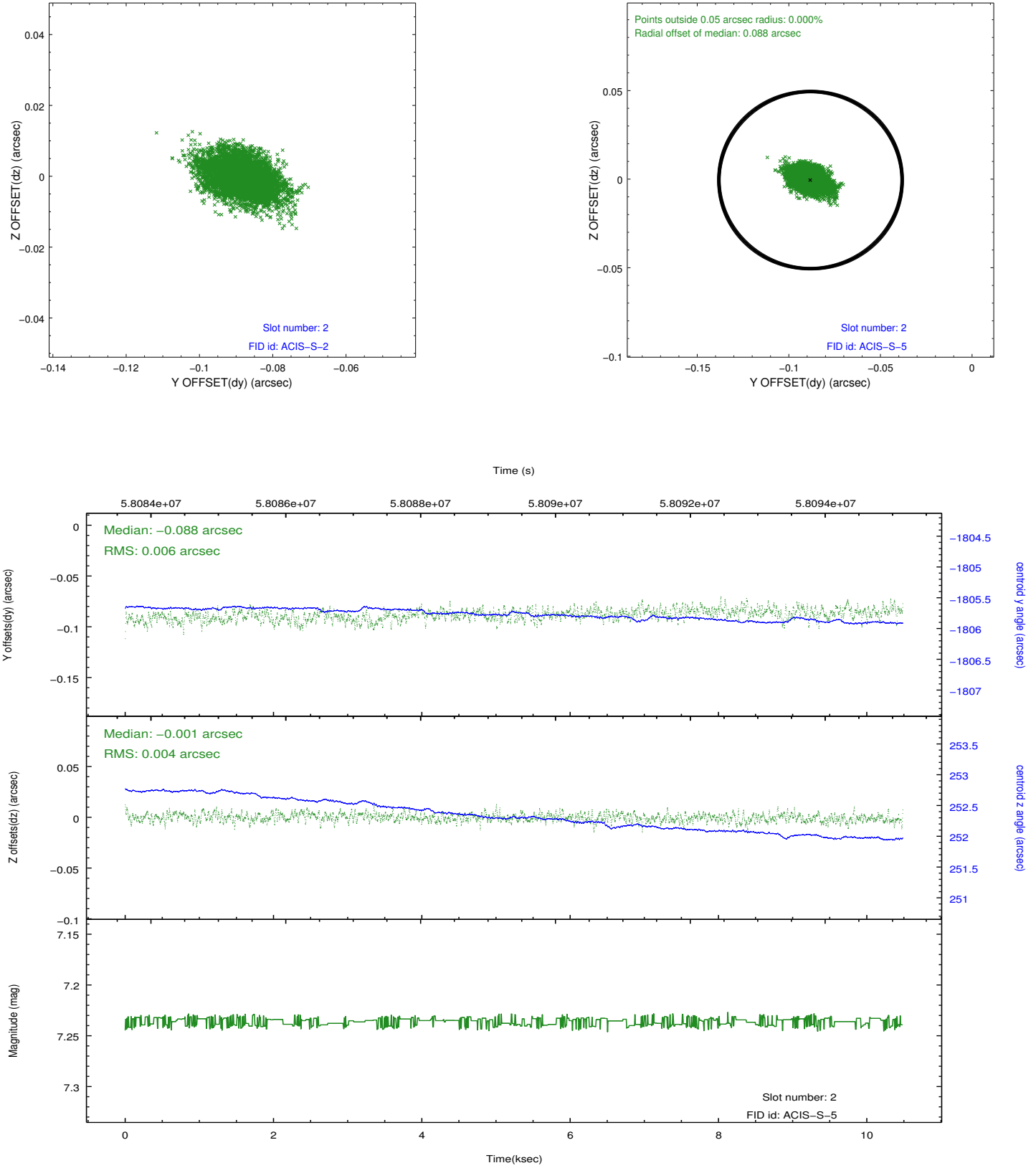
2.5.1 Slot 0



2.5.2 Slot 1

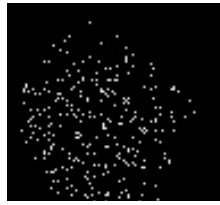


2.5.3 Slot 2



3 Point Sources

15.61 arcmin



A Summary

A.1 Status

V&V Scientist	Joy Nichols
V&V Date (YYYY-MM-DD)	2010.07.28
V&V Edition	1
V&V Disposition and Status	OK
V&V Charge Time	9.657

A.2 Comments

Imaging on ACIS-I.

===

Charge time for this ObsId remains at original value of 9.657 ksec, although with the current processing the charge time would have been 9.757 ksec.

=====

The focal plane temperature is approximately -110 C during this observation. This reprocessing of the data applies no CTI correction because none is available for this temperature at present.

The ACIS CTI correction has not been calibrated at this temperature, because it was early in the mission, and ACIS had not yet been lowered to the standard -119.7 C. Both front and back illuminated chips are affected. However a T_GAIN correction has been applied to the BI chips (ACIS-5 and ACIS-7) data included here.

The ACIS spectral response calibration is less accurate at these warmer temperatures than it is at -119.7 C. Users whose science objectives depend on the most accurate spectral response (ie: fitting line-rich spectra) may notice an effect. Users whose science objectives do not depend on the most accurate spectral response should not notice an effect.