

V&V Reference Report

L2 ASCDS Version : 8.4.5

Observation 10916 - L2 Version 2
Chandra X-Ray Center

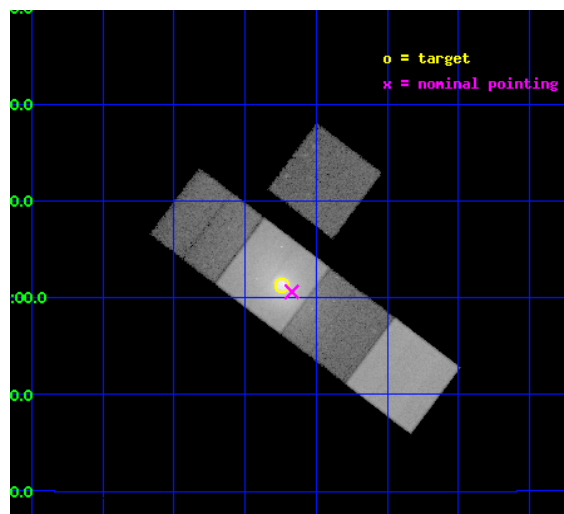
L2 Processing Date : Jun 8 2012

Contents

1	Front	2
2	OBI	3
2.1	OBI	3
2.1.1	Images	3
2.1.2	Bias	3
2.1.3	Parameters	4
2.1.4	Events	4
2.2	Compared Parameters	5
2.3	Aspect	6
2.4	Star Slots	9
2.4.1	Slot 3	9
2.4.2	Slot 4	10
2.4.3	Slot 5	11
2.4.4	Slot 6	12
2.4.5	Slot 7	13
2.5	FID Slots	14
2.5.1	Slot 0	14
2.5.2	Slot 1	15
2.5.3	Slot 2	16
A	Summary	17
A.1	Status	17
A.2	Comments	17

1 Front

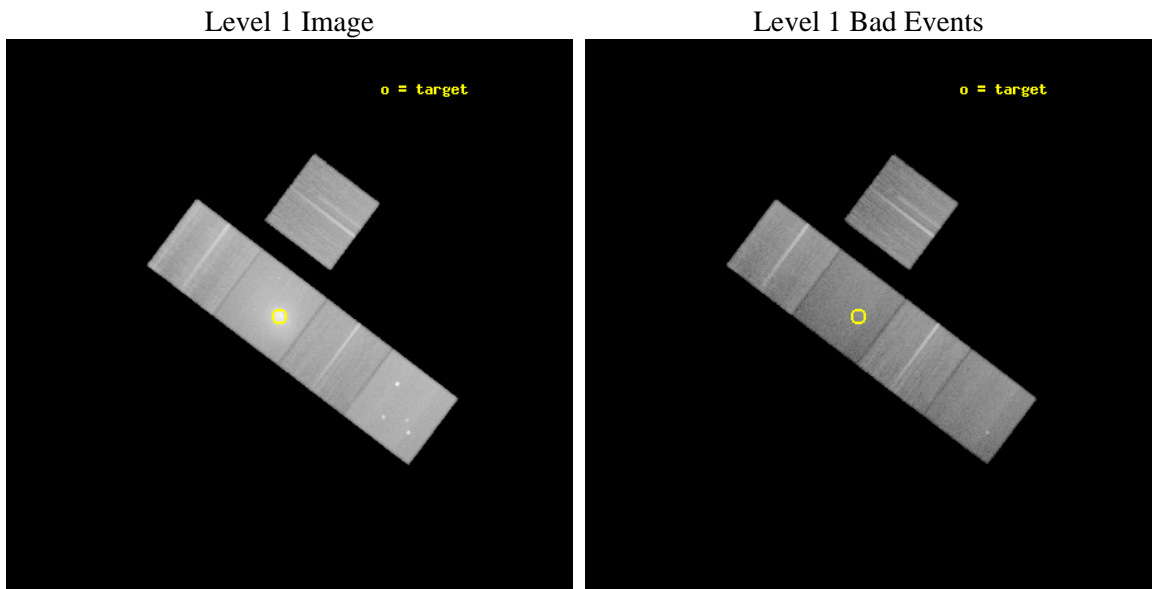
seq_num	800835	Sequence number
obs_id	10916	Observation id
title	Shocks, Ripples, and Bubbles: A Very Deep Observation of Abell 2052	
observer	Prof. Elizabeth Blanton	Principal investigator
object	Abell 2052	Source name
dtcycle	0	
cycle	P	events from which exps? Prim/Second/Both
ra_targ	229.185417	Observer's specified target RA [deg]
dec_targ	7.021278	Observer's specified target Dec [deg]
ra_nom	229.16771111848	Nominal RA [deg]
dec_nom	7.0100893894072	Nominal Dec [deg]
roll_nom	217.05879350637	Nominal Roll [deg]
revision	2	Processing version of data
ontime	35467.100272775	Sum of GTIs [s]
livetime	35003.696497212	Livetime [s]
ontime3	35457.677281857	Sum of GTIs [s]
ontime5	35467.100272775	Sum of GTIs [s]
ontime6	35460.818292081	Sum of GTIs [s]
ontime7	35467.100272775	Sum of GTIs [s]
ontime8	35463.959292412	Sum of GTIs [s]
l2events	709152	Number of level 2 events



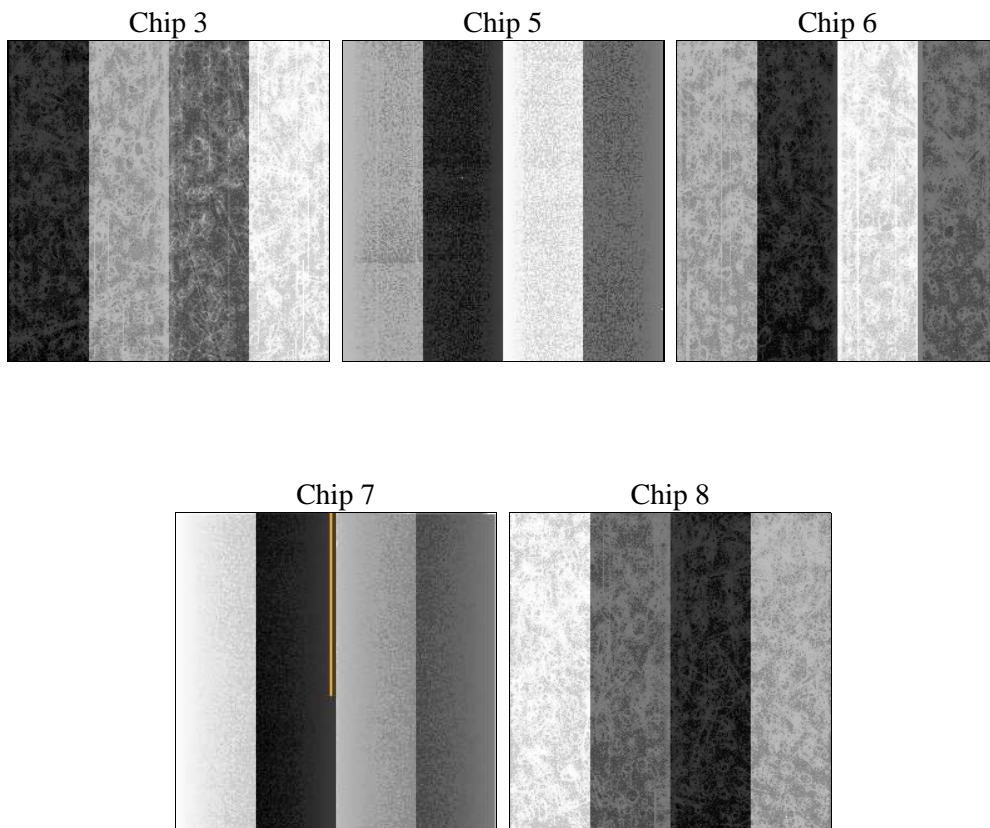
2 OBI

2.1 OBI

2.1.1 Images



2.1.2 Bias



2.1.3 Parameters

obi_num	0	Obi number	sched_exp_time	35300.000000	[s] Scheduled observation exposure time
ascdsver	8.4.5	Processing system revision	ontime	35467.100272775	Sum of GTIs [s]
caldbver	4.4.10	 	ontime3	35457.677281857	Sum of GTIs [s]
date	2012-06-08T21:15:28	Date and time of file creation	ontime5	35467.100272775	Sum of GTIs [s]
revision	2	Processing version of data	ontime6	35460.818292081	Sum of GTIs [s]
			ontime7	35467.100272775	Sum of GTIs [s]
			ontime8	35463.959292412	Sum of GTIs [s]
			l1events	2137374	Number of level 1 events

2.1.4 Events

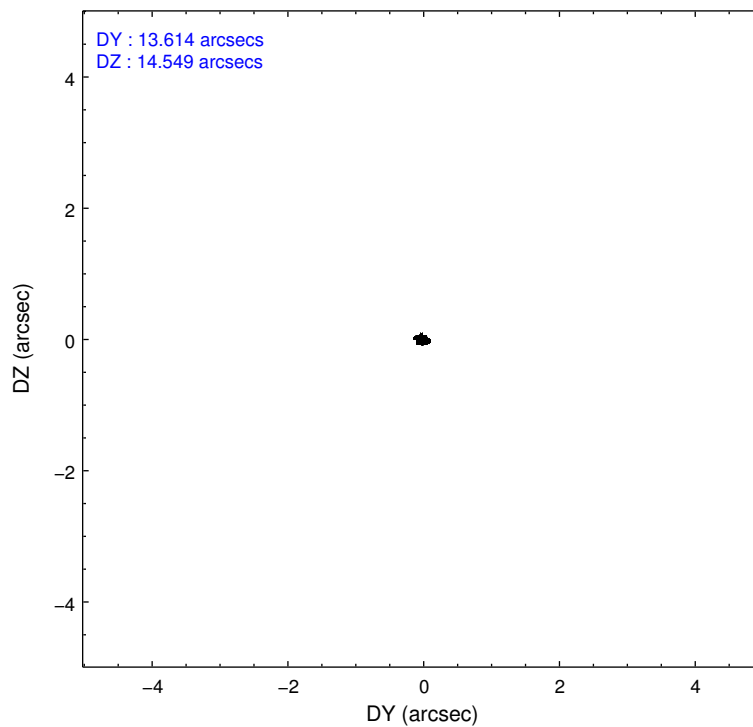
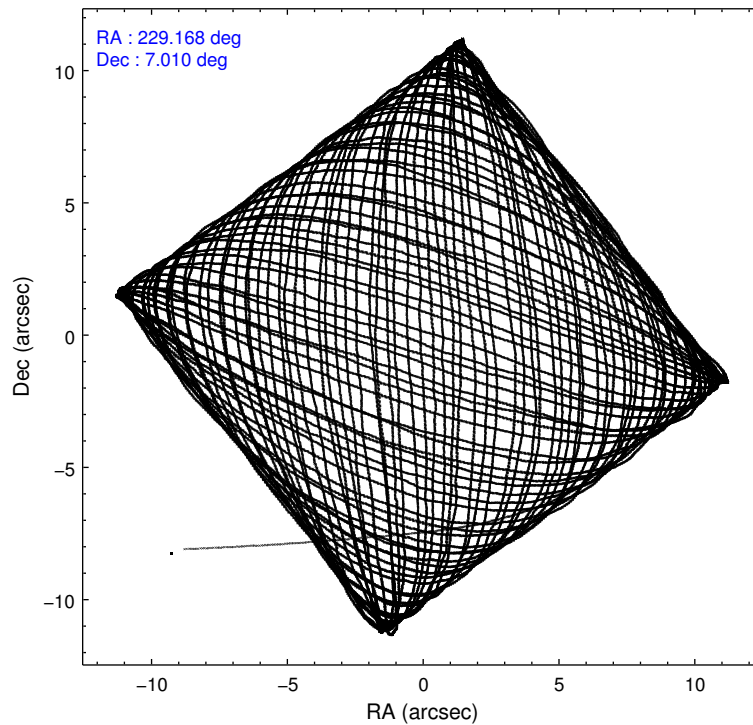
	ccd 3	ccd 5	ccd 6	ccd 7	ccd 8
level 1 events	313409	462726	349550	597973	413716
rejected events	281146	234648	296116	208295	308385
rejected %	89%	50%	84%	34%	74%

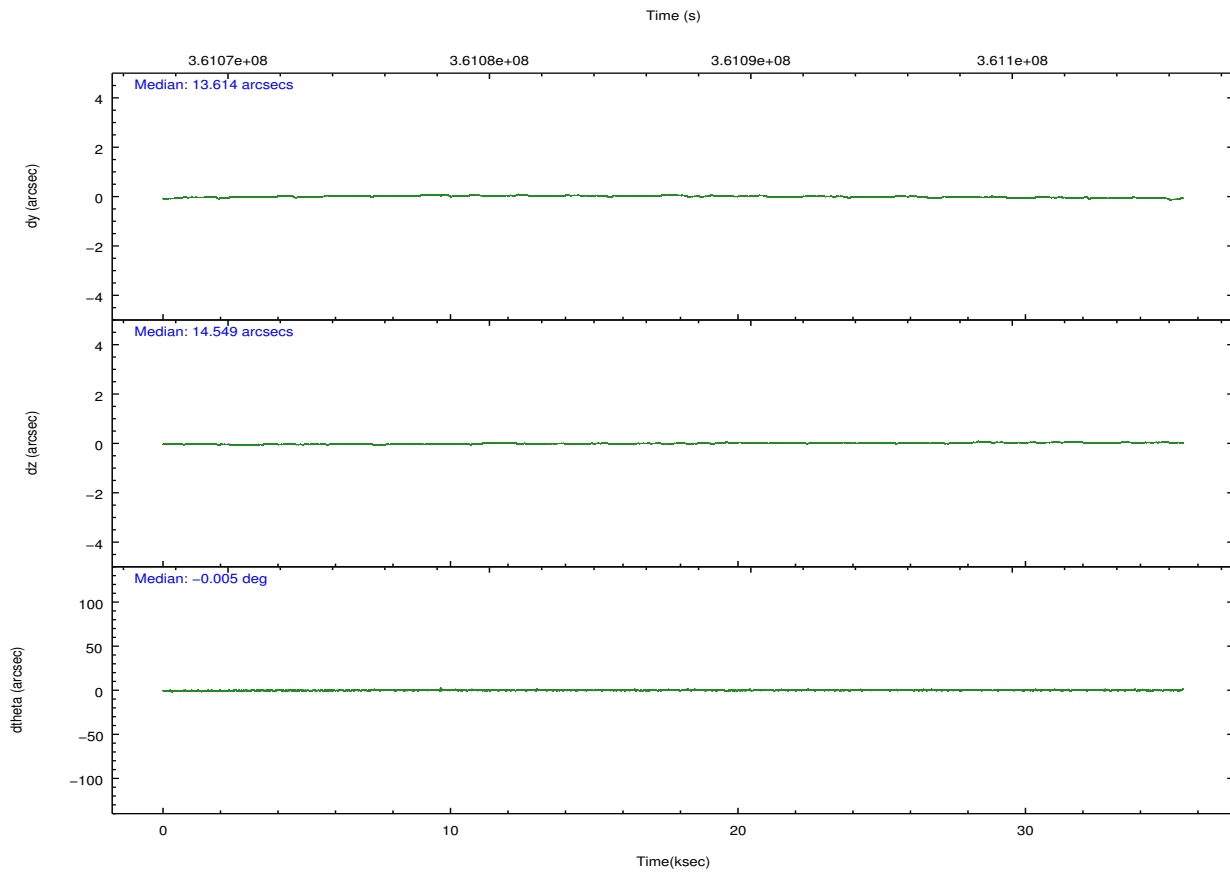
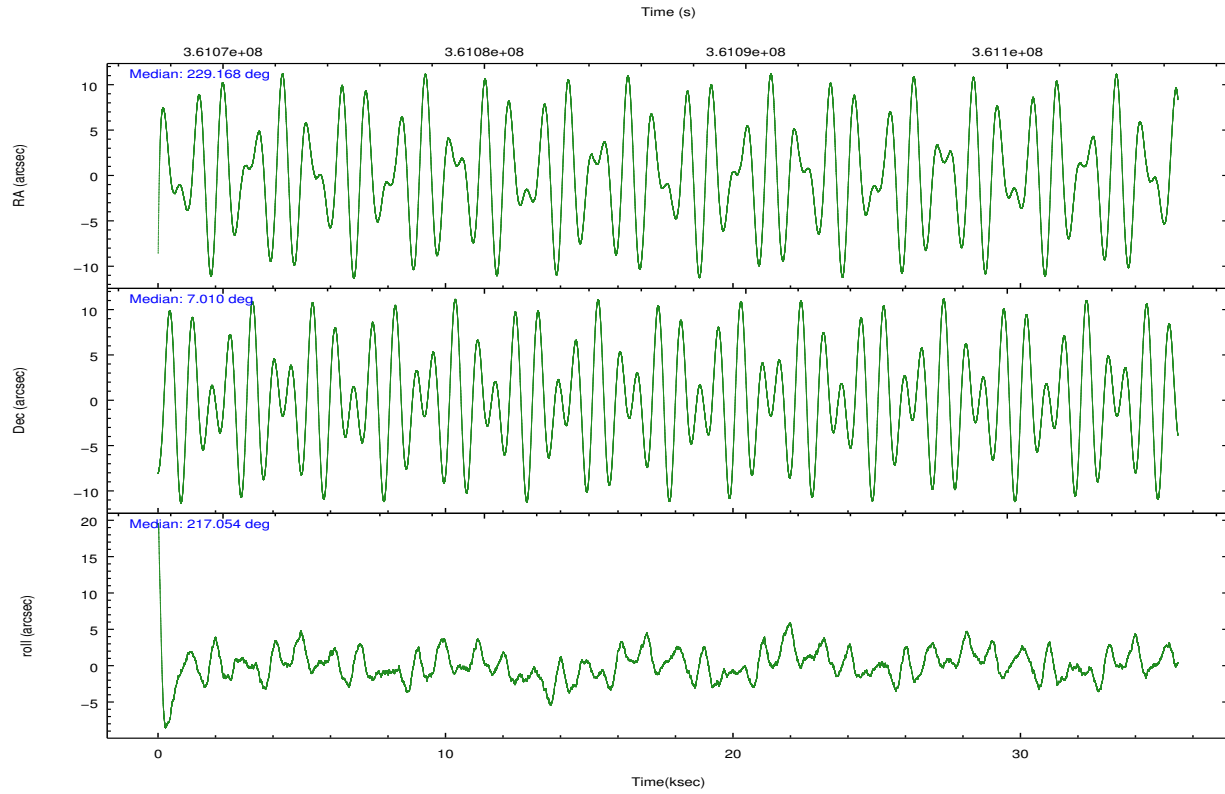
	ccd 3	ccd 5	ccd 6	ccd 7	ccd 8
grade 0 events	13082	27762	29187	87183	35777
	4%	5%	8%	14%	8%
grade 1 events	191	873	259	599	363
	0%	0%	0%	0%	0%
grade 2 events	6977	69760	9349	94786	24343
	2%	15%	2%	15%	5%
grade 3 events	3428	9635	4185	41705	11091
	1%	2%	1%	6%	2%
grade 4 events	3438	9301	4086	41100	10300
	1%	2%	1%	6%	2%
grade 5 events	12894	35881	13465	39799	19508
	4%	7%	3%	6%	4%
grade 6 events	6198	118031	7750	130673	27018
	1%	25%	2%	21%	6%
grade 7 events	267201	191483	281269	162128	285316
	85%	41%	80%	27%	68%

2.2 Compared Parameters

Parameter	Planned	Actual	Parameter	Planned	Actual
Instrument	ACIS	ACIS	Obspar format version number	7	7
Detector	ACIS-35678	ACIS-35678	Obspar file type	PREDICTED	ACTUAL
Grating	NONE	NONE	Obspar update status	NONE	UPDATED
Data mode	VFAINT	VFAINT	Number of optional ACIS chips dropped	0	0
Observation mode	POINTING	POINTING	On-chip summing requested	N	N
[deg] Pointing RA	229.178086	229.1677111184772	Subarray requested	NONE	NONE
[deg] Pointing Dec	7.035403	7.010089389407228	Alternating exposures requested	N	N
[deg] Pointing Roll	216.900900	217.0587935063708	[s] Primary exposure time	0.000000	3.1
[mm] SIM focus pos	-0.684267	-0.6828225247311905			
[mm] SIM defocus	0	0.001444936568705701			
[mm] SIM translation stage pos	-190.132523	-190.1400660498719			
[mm] SIM translation stage offset	0	0.00754346686406393			
[s] Observation start time (MET)	361069458.184000	361067957.16393			
Observation start date	2009-06-11T01:03:12	2009-06-11T00:39:17			
[s] Observation end time (MET)	361104758.184000	361105698.69082			
Observation end date	2009-06-11T10:51:32	2009-06-11T11:08:18			
Read mode	TIMED	TIMED			

2.3 Aspect



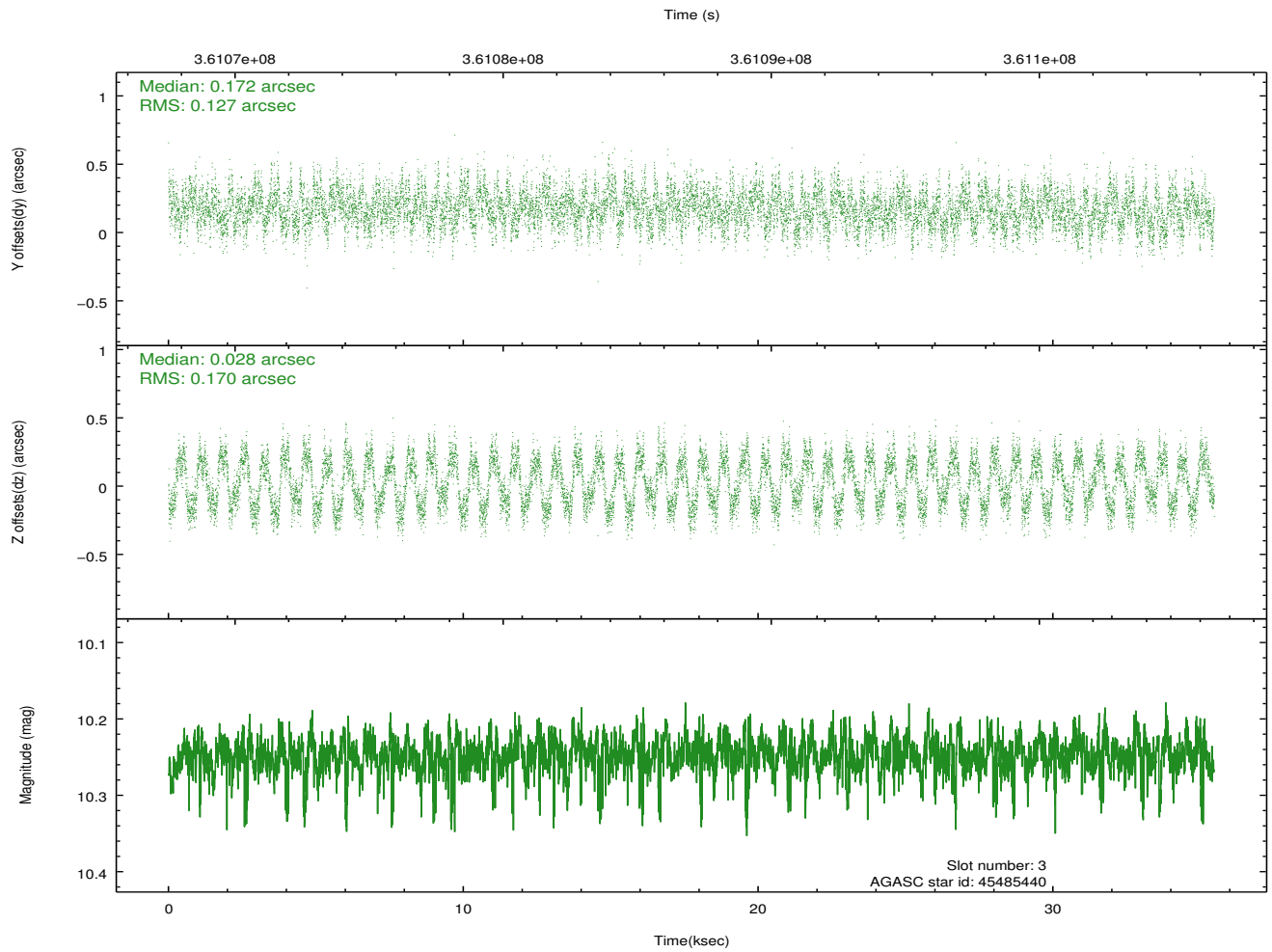
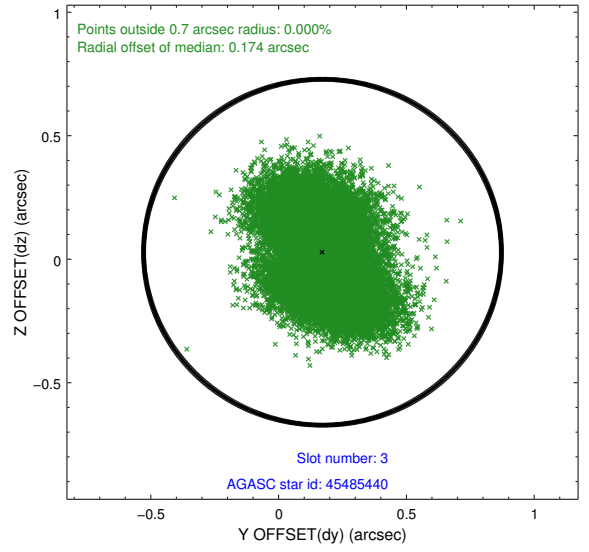
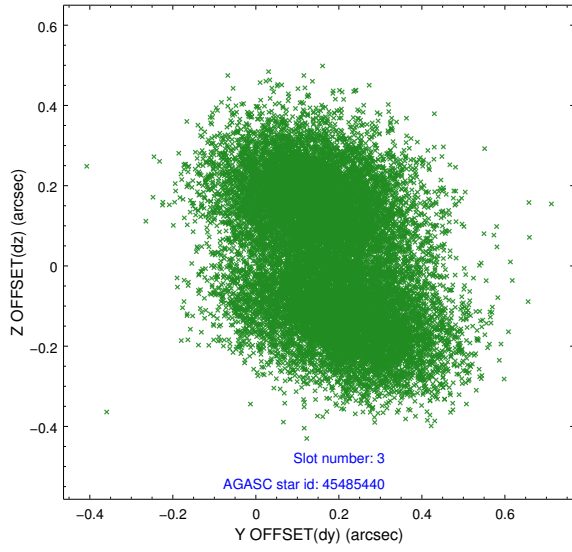


Slot Statistics

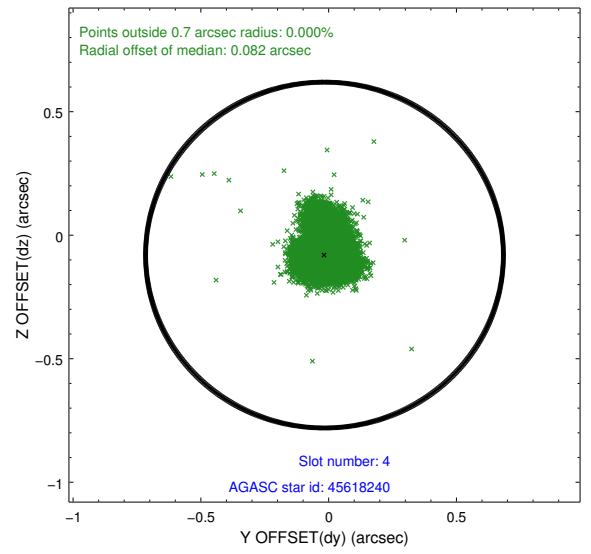
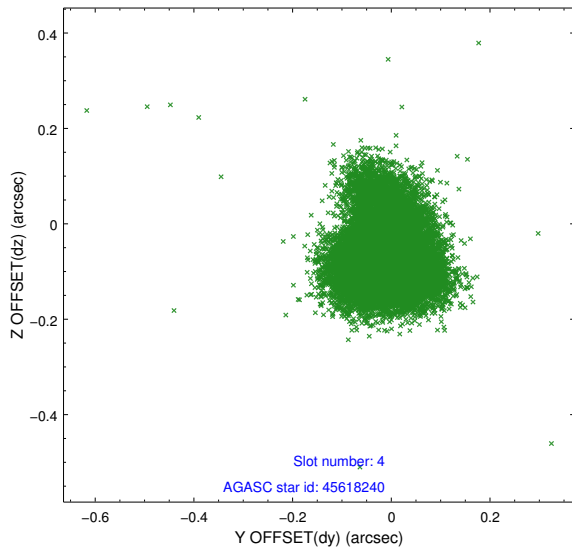
slot	status	id	mag	n_pts	med_dy	med_dz	dr1	dr2	ra	dec	mean_y	mean_z
0	FID	ACIS-S-2	6.92	8652	-0.057	-0.033	0.011	0.017	0.000000	0.000000	-766.58	-1735.95
1	FID	ACIS-S-4	7.00	8651	0.188	0.036	0.013	0.020	0.000000	0.000000	2146.91	172.59
2	FID	ACIS-S-5	7.03	8652	-0.162	0.005	0.012	0.018	0.000000	0.000000	-1819.50	166.23
3	GUIDE	45485440	10.25	17150	0.172	0.028	0.231	0.346	228.571035	6.780820	2286.05	-570.94
4	GUIDE	45618240	8.22	17296	-0.016	-0.080	0.084	0.152	229.756501	6.988062	-1550.64	1376.30
5	GUIDE	45619272	6.15	17304	-0.118	-0.146	0.111	0.174	228.973190	6.464840	1819.62	1202.73
6	GUIDE	120598184	10.11	17266	0.075	0.114	0.316	0.502	228.939530	7.597810	-533.04	-2128.87
7	GUIDE	120599960	10.21	17267	-0.158	0.097	0.255	0.424	229.604732	7.524393	-2274.79	-494.09

2.4 Star Slots

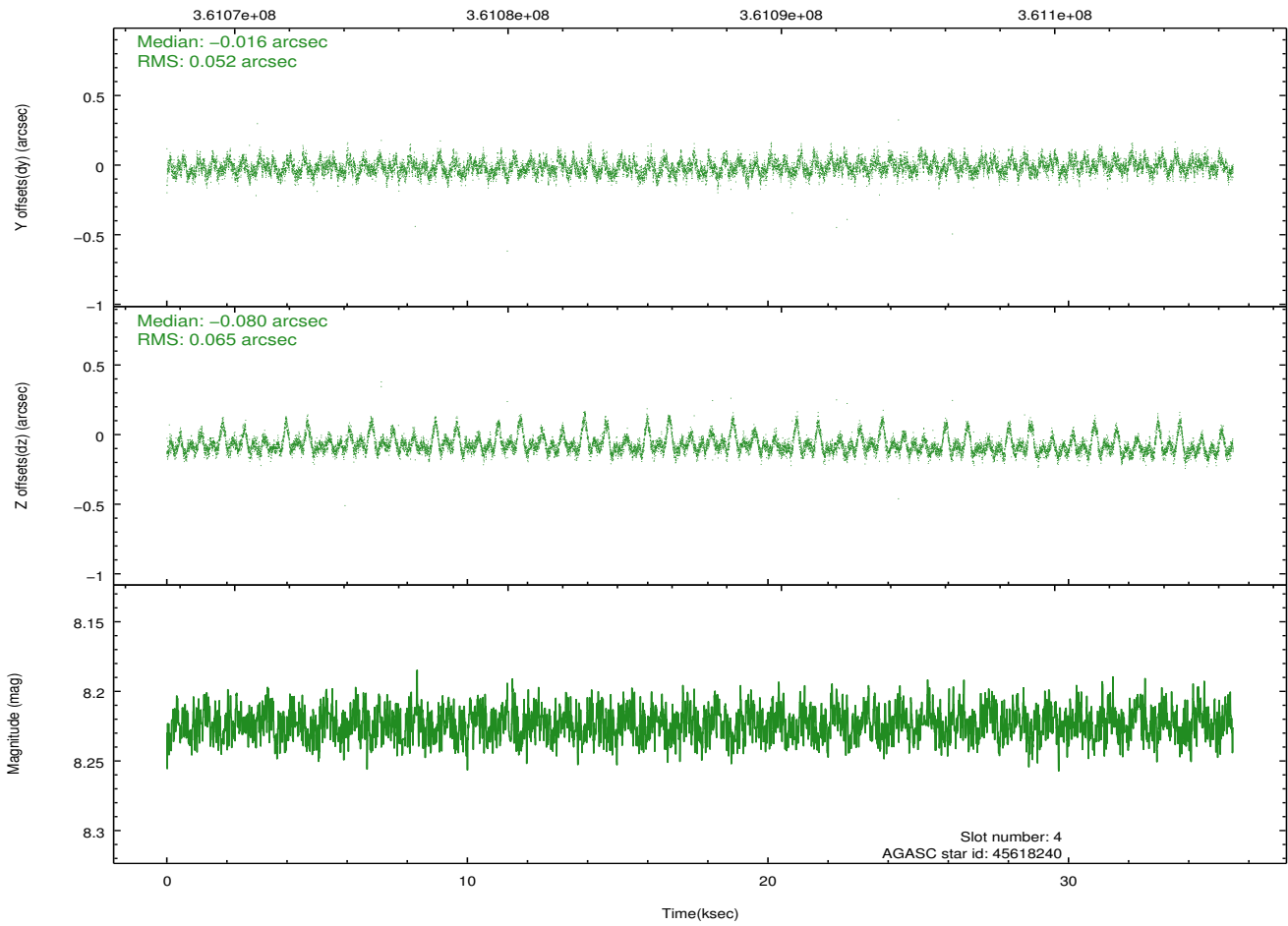
2.4.1 Slot 3



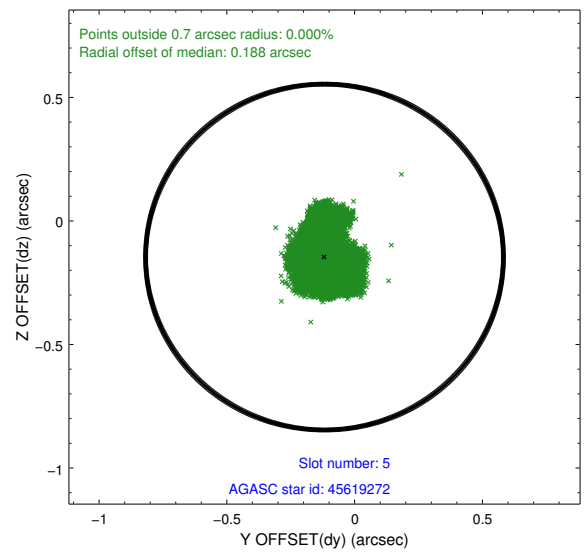
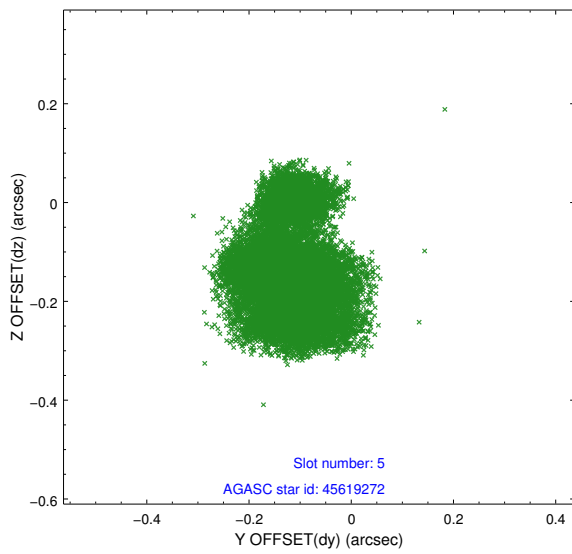
2.4.2 Slot 4



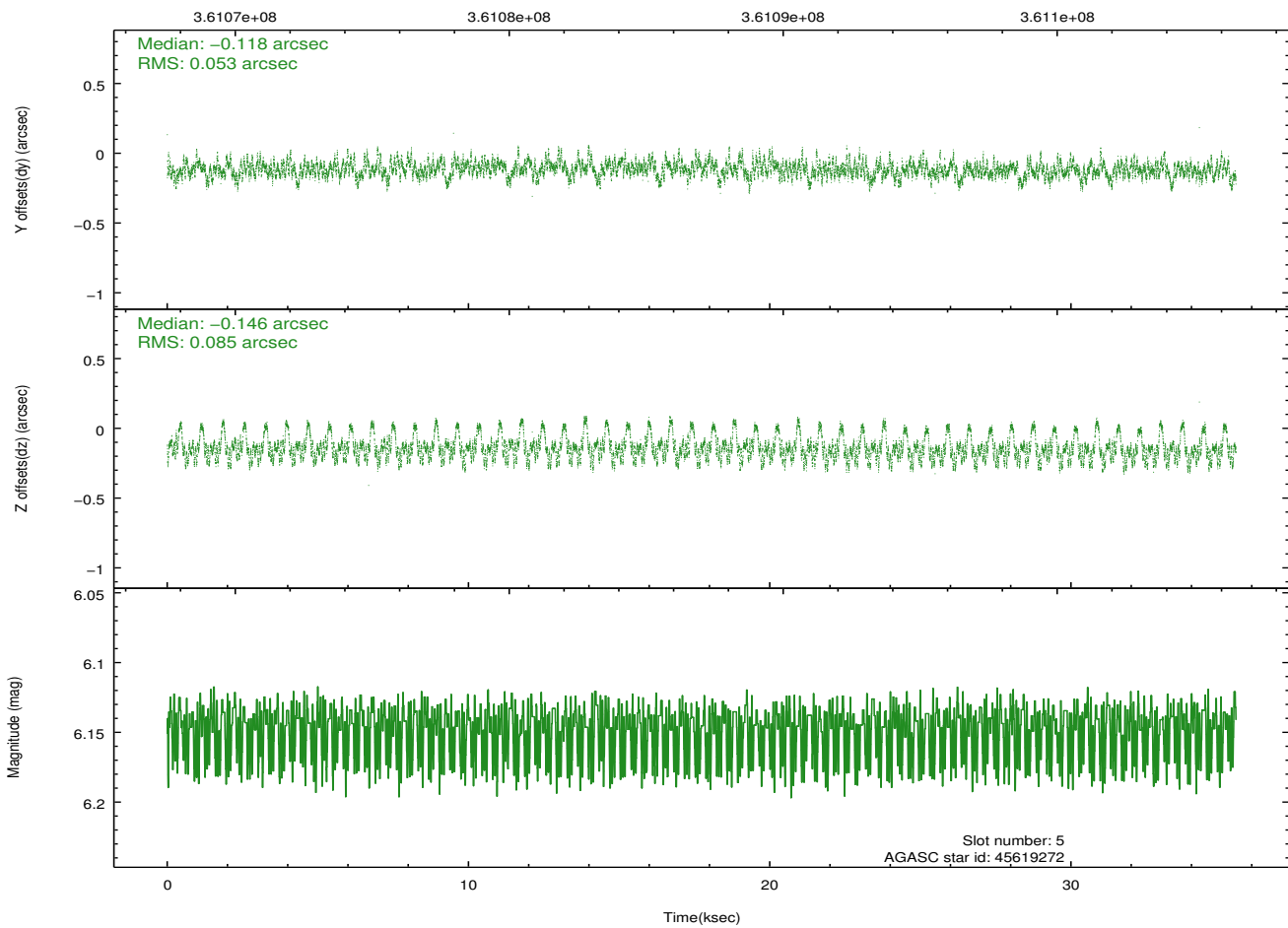
Time (s)



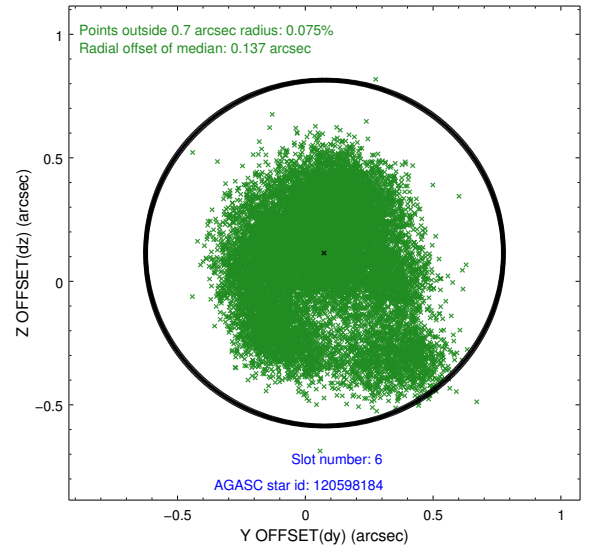
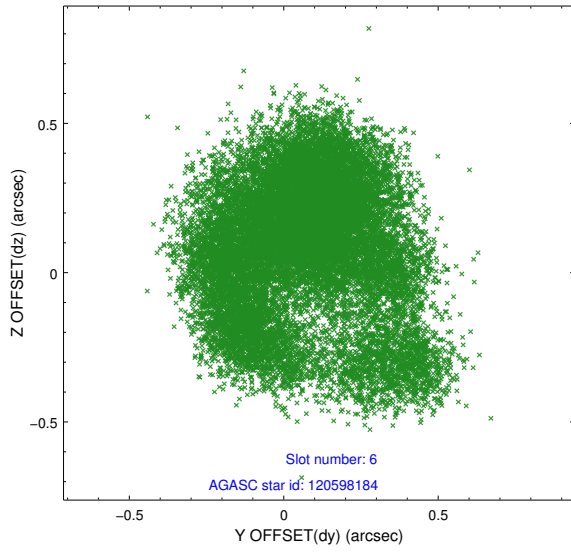
2.4.3 Slot 5



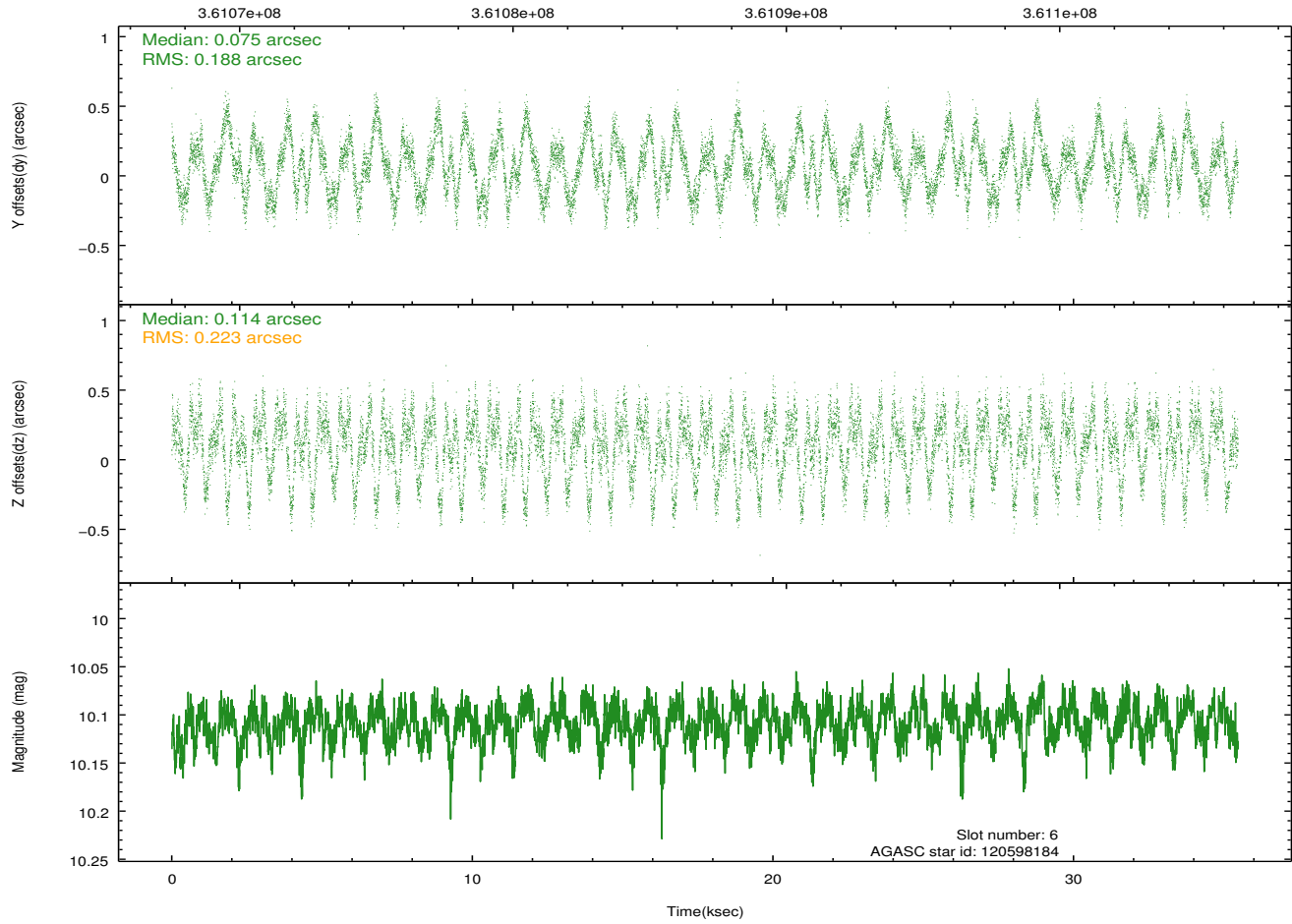
Time (s)



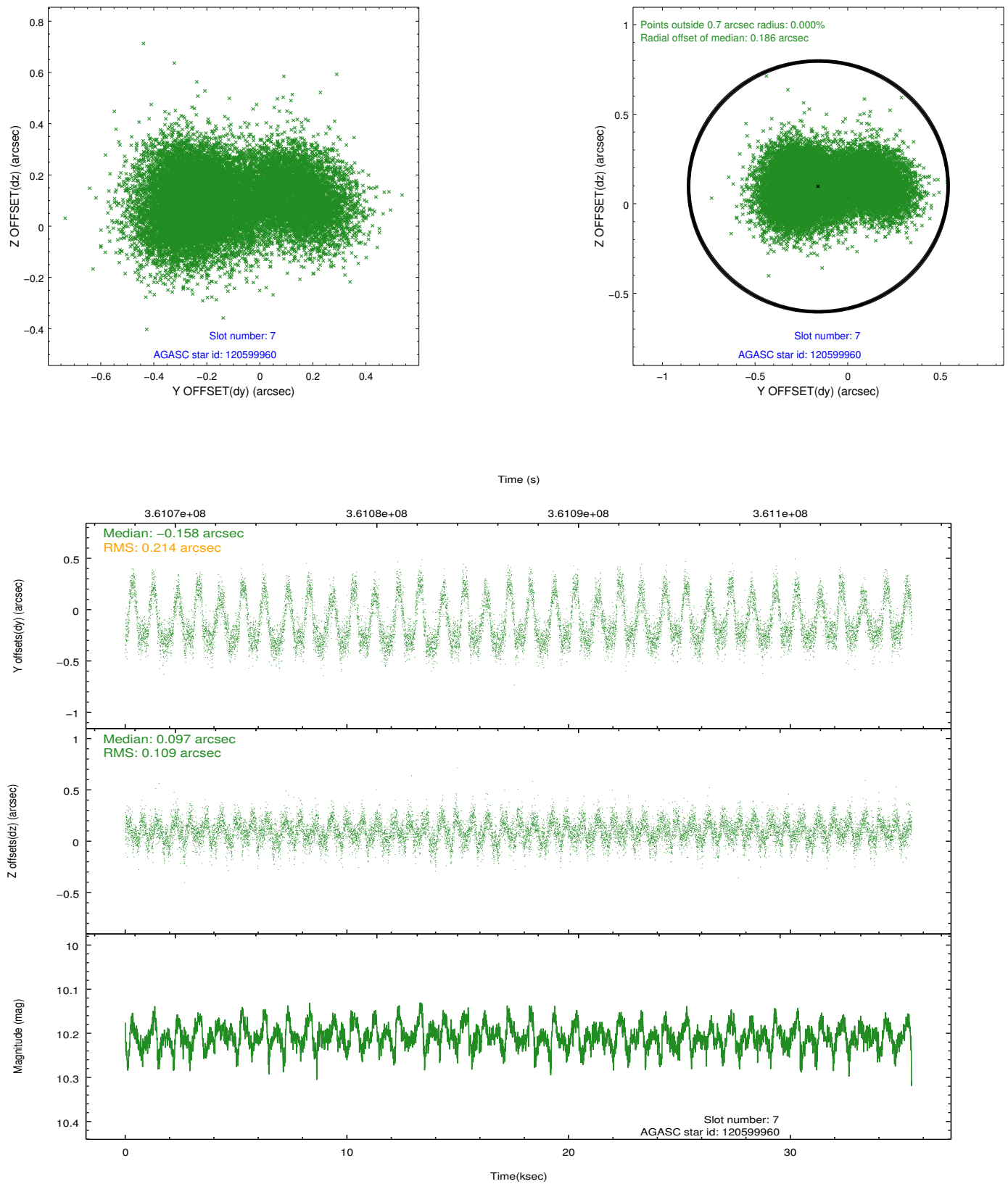
2.4.4 Slot 6



Time (s)

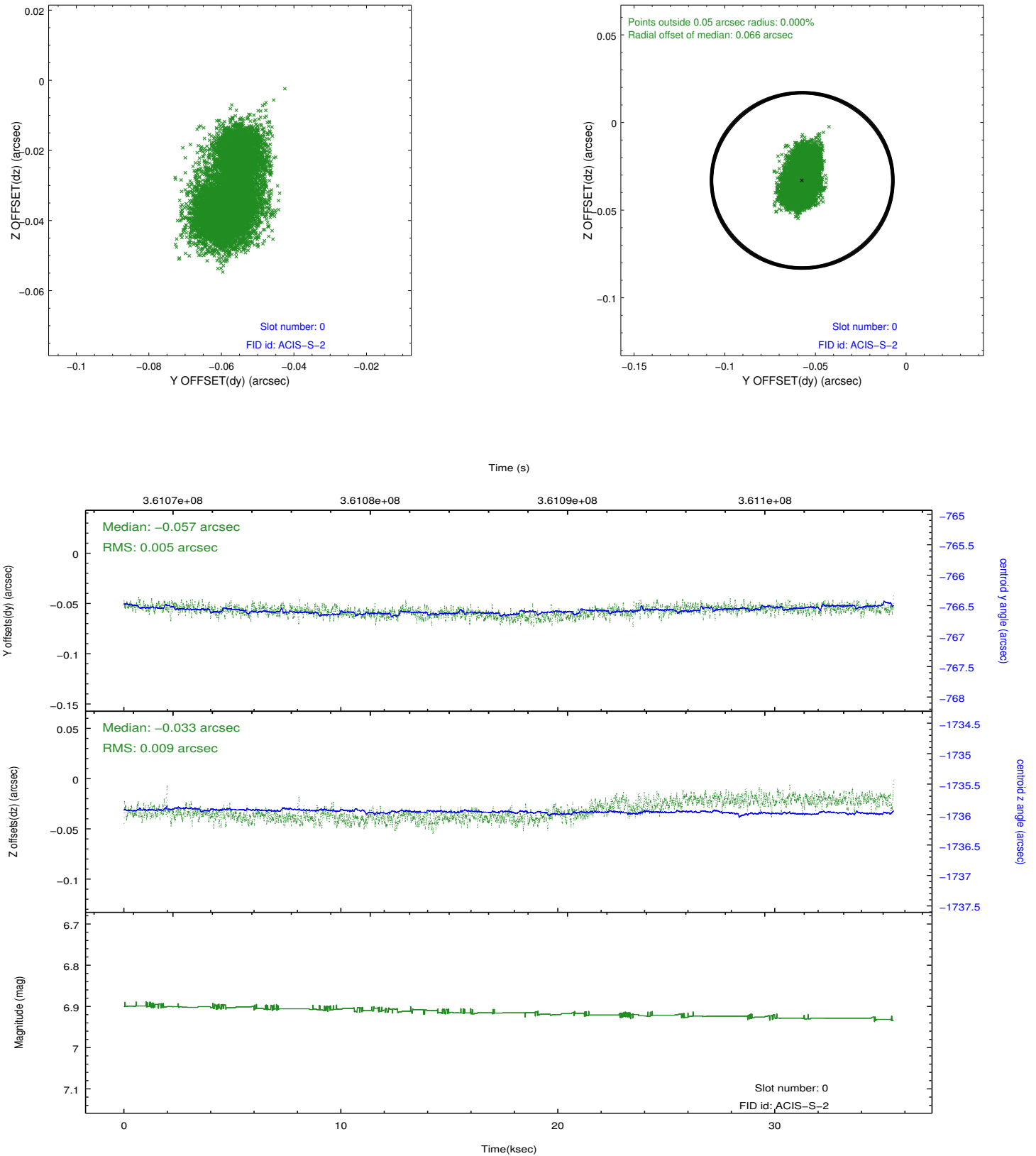


2.4.5 Slot 7

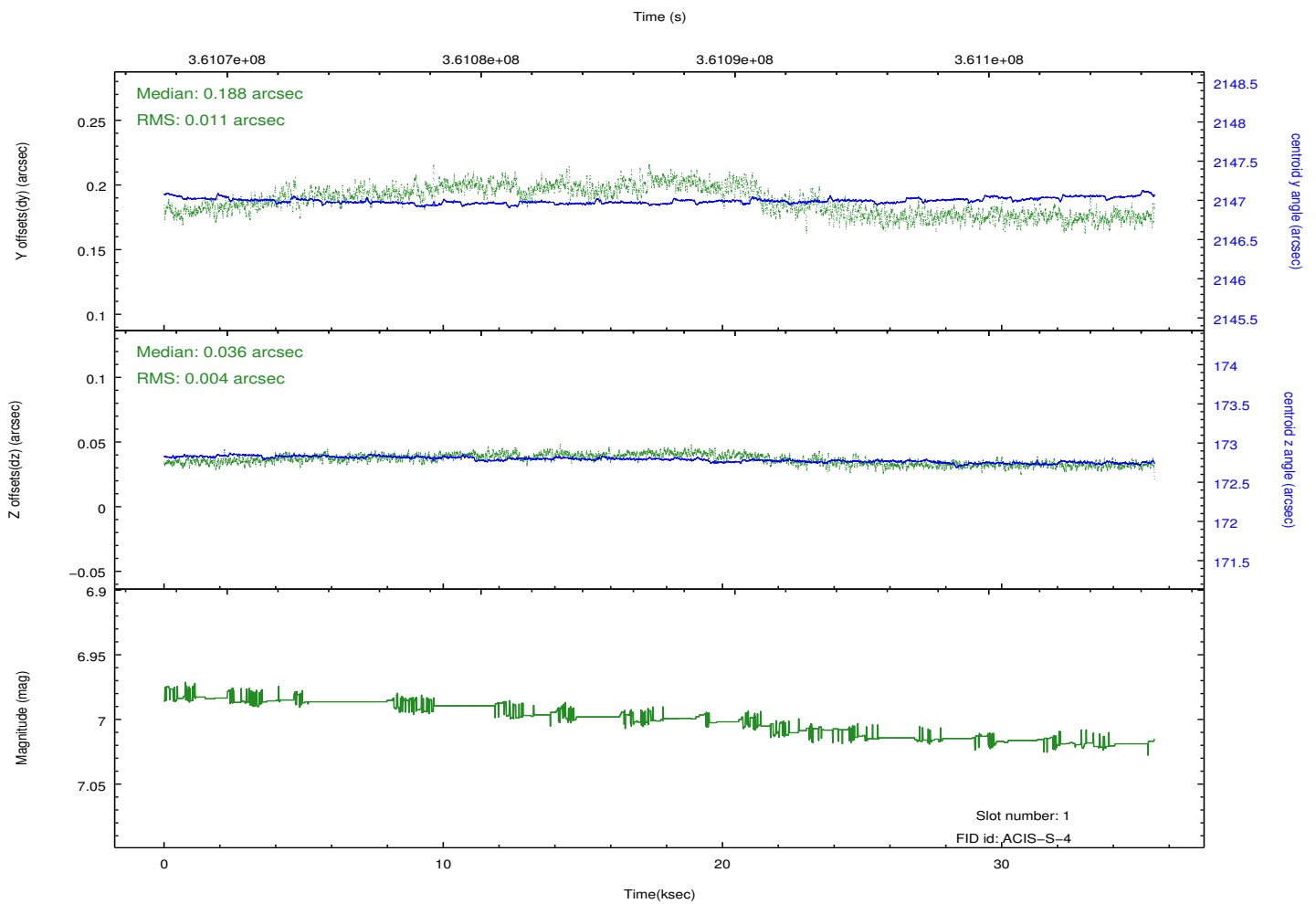
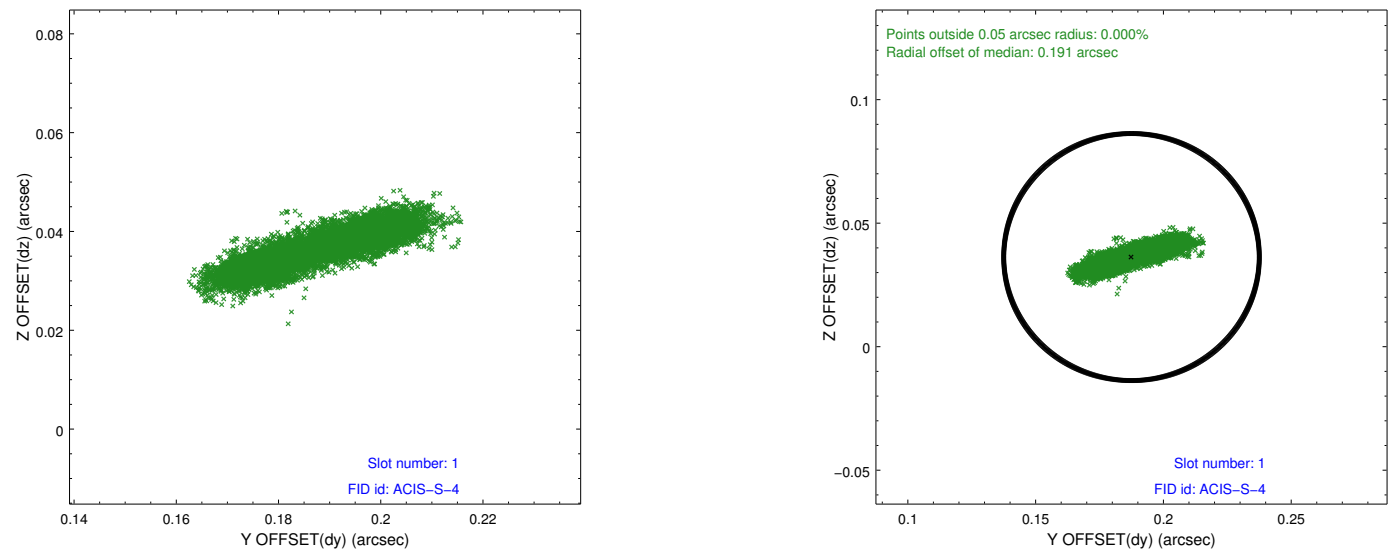


2.5 FID Slots

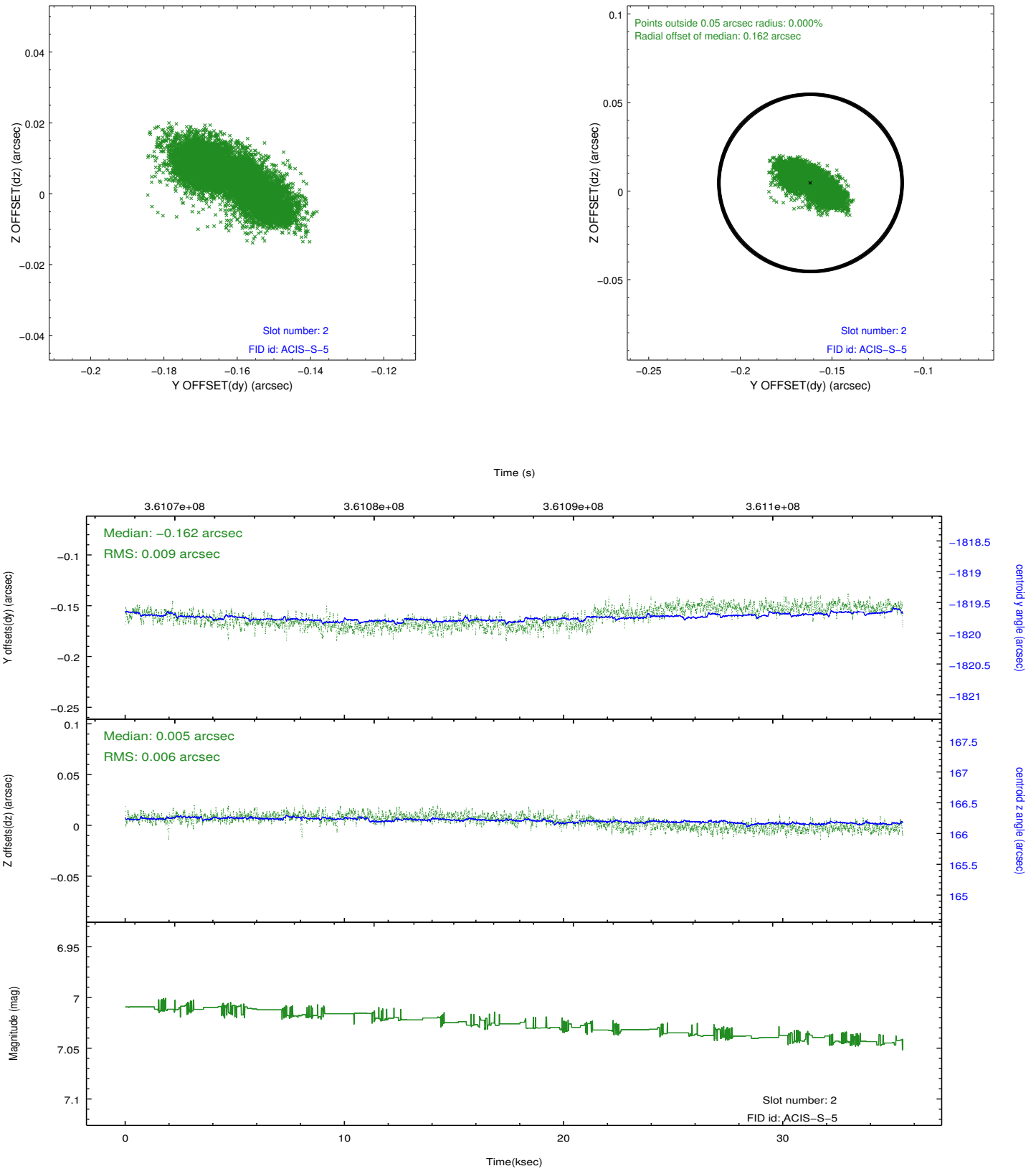
2.5.1 Slot 0



2.5.2 Slot 1



2.5.3 Slot 2



A Summary

A.1 Status

V&V Scientist	Jen Lauer
V&V Date (YYYY-MM-DD)	2012.06.13
V&V Edition	1
V&V Disposition and Status	OK
V&V Charge Time	35.4671002

A.2 Comments