

V&V Reference Report

L2 ASCDS Version : 8.4.5

Observation 11106 - L2 Version 2
Chandra X-Ray Center

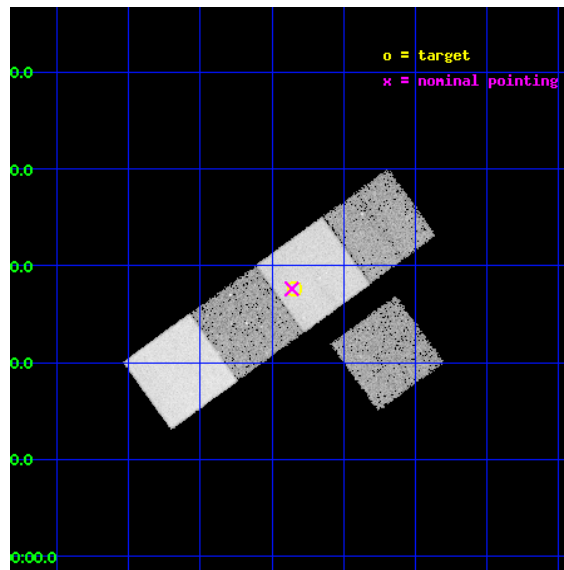
L2 Processing Date : Jul 8 2012

Contents

1	Front	2
2	OBI	3
2.1	OBI	3
2.1.1	Images	3
2.1.2	Bias	3
2.1.3	Parameters	4
2.1.4	Events	4
2.2	Compared Parameters	5
2.3	Aspect	6
2.4	Star Slots	9
2.4.1	Slot 3	9
2.4.2	Slot 4	10
2.4.3	Slot 5	11
2.4.4	Slot 6	12
2.4.5	Slot 7	13
2.5	FID Slots	14
2.5.1	Slot 0	14
2.5.2	Slot 1	15
2.5.3	Slot 2	16
A	Summary	17
A.1	Status	17
A.2	Comments	17

1 Front

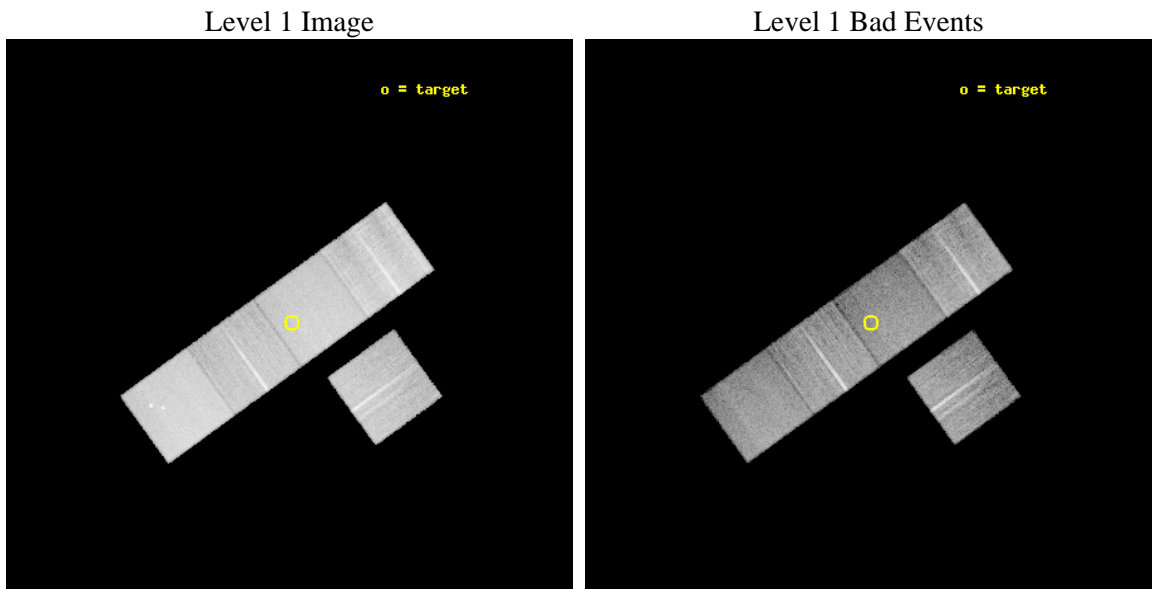
seq_num	501191	Sequence number
obs_id	11106	Observation id
title	Rapid Observations of Short Gamma-Ray Bursts: Accurate Positions Hold the Key to the Progenitor Population	Proposal title
observer	Prof. Edo Berger	Principal investigator
object	GRB101219A	Source name
dtcycle	0	
cycle	P	events from which exps? Prim/Second/Both
ra_targ	74.585325	Observer's specified target RA [deg]
dec_targ	-2.539492	Observer's specified target Dec [deg]
ra_nom	74.590190557375	Nominal RA [deg]
dec_nom	-2.5398313279206	Nominal Dec [deg]
roll_nom	324.15684181136	Nominal Roll [deg]
revision	2	Processing version of data
ontime	20037.675302684	Sum of GTIs [s]
livetime	19775.868323333	Livetime [s]
ontime3	20034.411152363	Sum of GTIs [s]
ontime5	20037.634262681	Sum of GTIs [s]
ontime6	20037.593222678	Sum of GTIs [s]
ontime7	20037.675302684	Sum of GTIs [s]
ontime8	20037.511142671	Sum of GTIs [s]
l2events	218157	Number of level 2 events



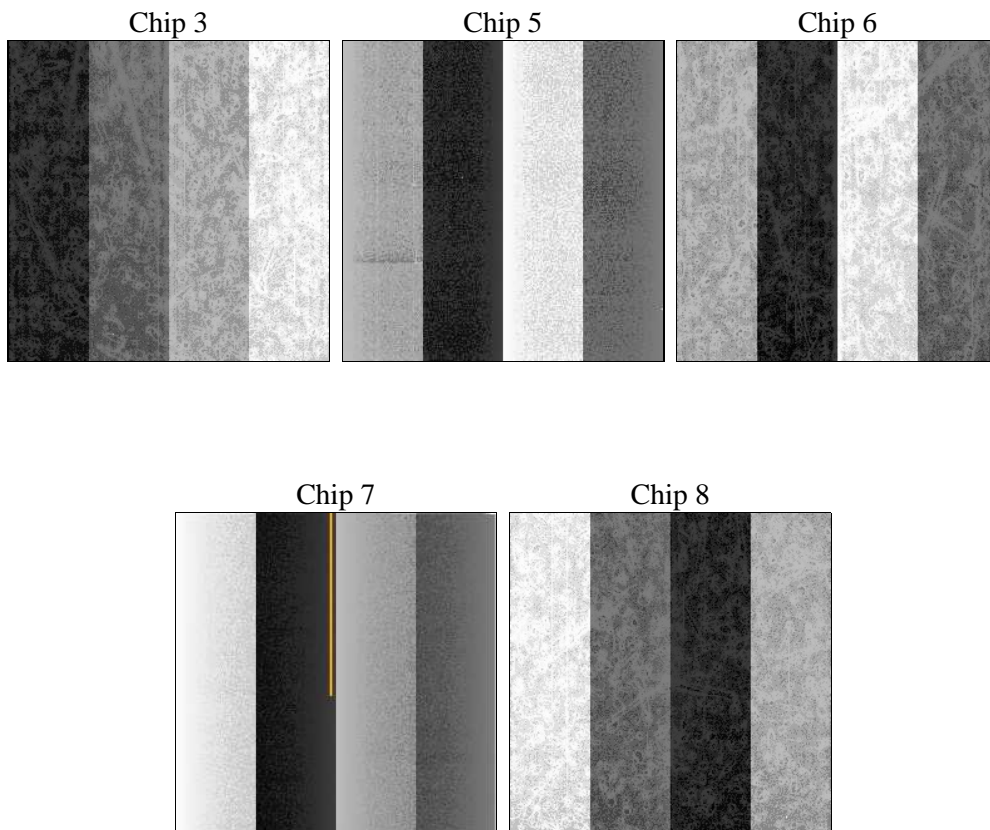
2 OBI

2.1 OBI

2.1.1 Images



2.1.2 Bias



2.1.3 Parameters

obi_num	0	Obi number	sched_exp_time	20000.000000	[s] Scheduled observation exposure time
ascdsver	8.4.5	Processing system revision	ontime	20037.675302684	Sum of GTIs [s]
caldbver	4.5.0	 	ontime3	20034.411152363	Sum of GTIs [s]
date	2012-07-08T19:37:27	Date and time of file creation	ontime5	20037.634262681	Sum of GTIs [s]
revision	2	Processing version of data	ontime6	20037.593222678	Sum of GTIs [s]
			ontime7	20037.675302684	Sum of GTIs [s]
			ontime8	20037.511142671	Sum of GTIs [s]
			l1events	856937	Number of level 1 events

2.1.4 Events

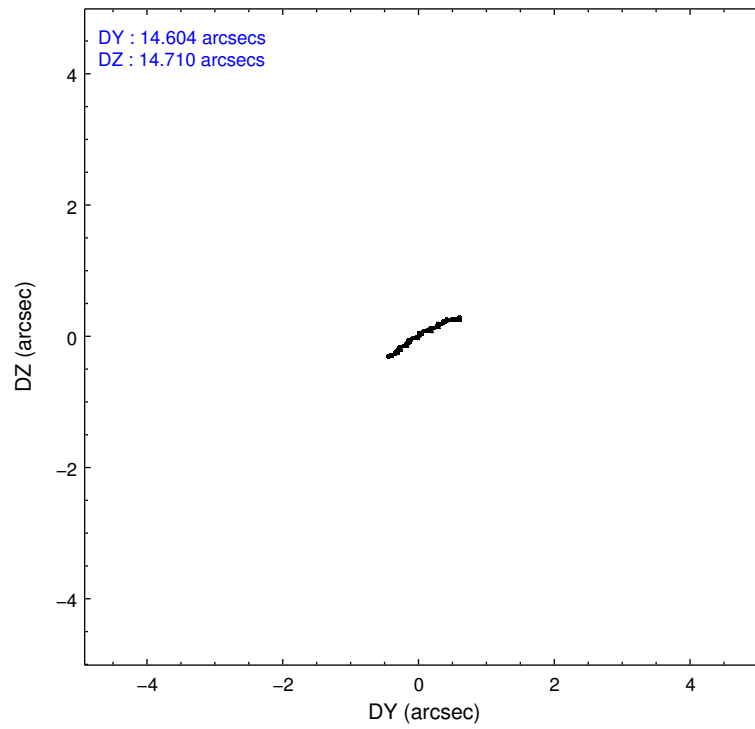
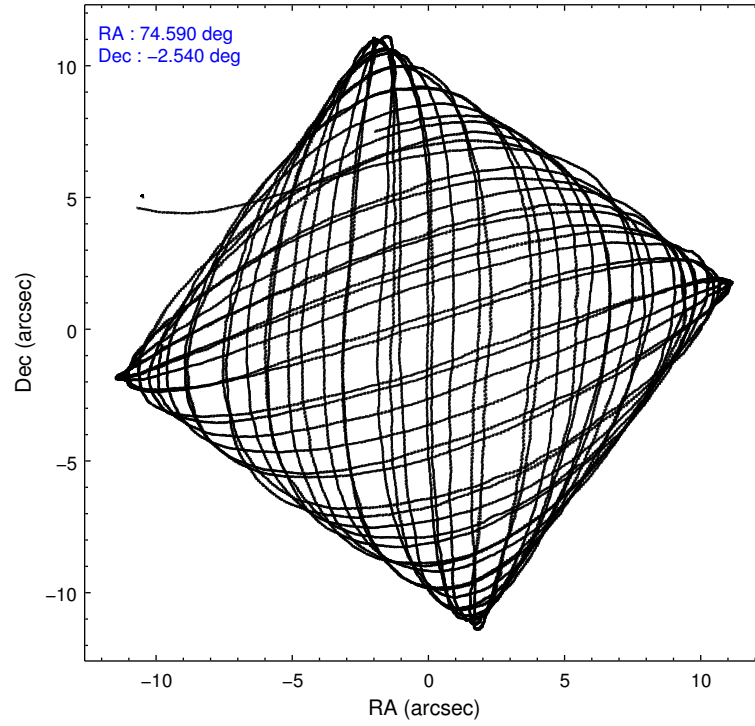
	ccd 3	ccd 5	ccd 6	ccd 7	ccd 8
level 1 events	136632	213684	144222	175466	186933
rejected events	122298	109698	128207	97758	139265
rejected %	89%	51%	88%	55%	74%

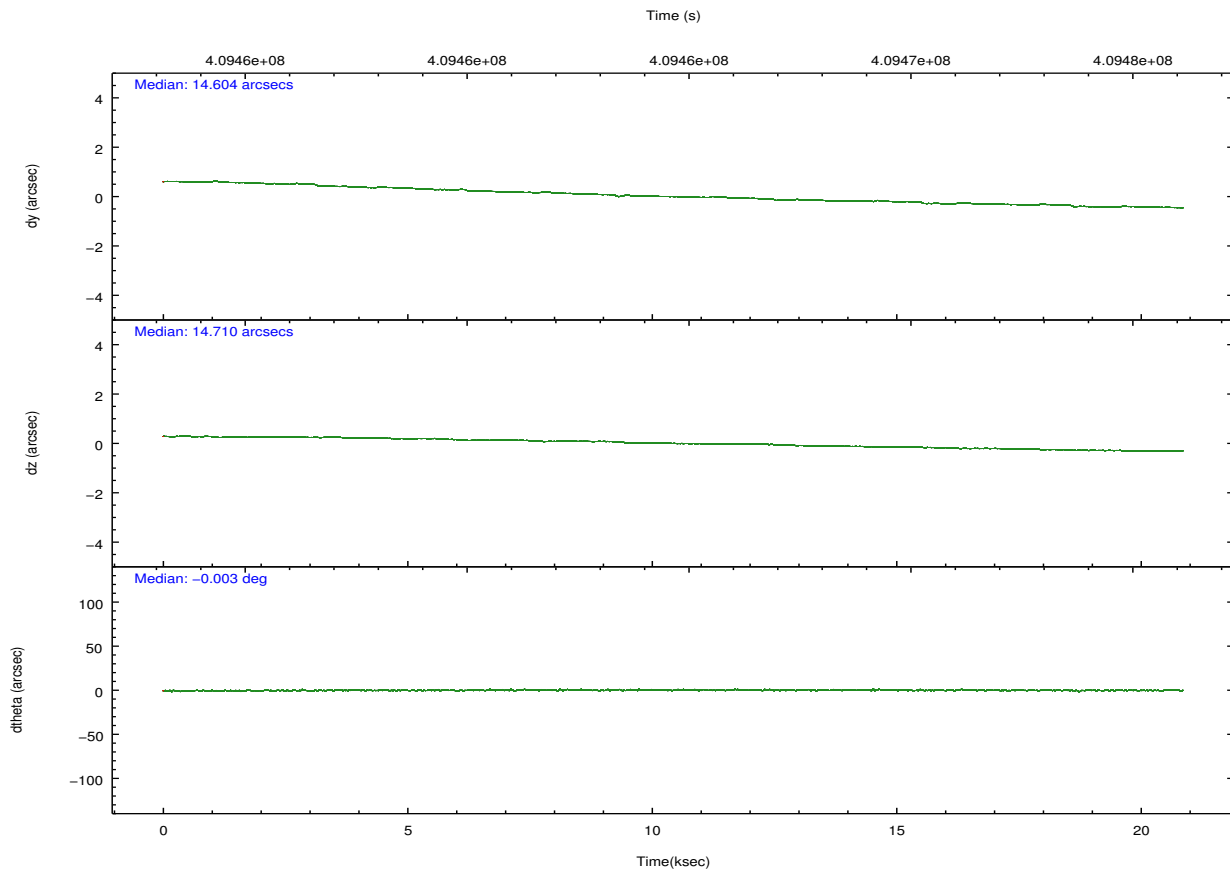
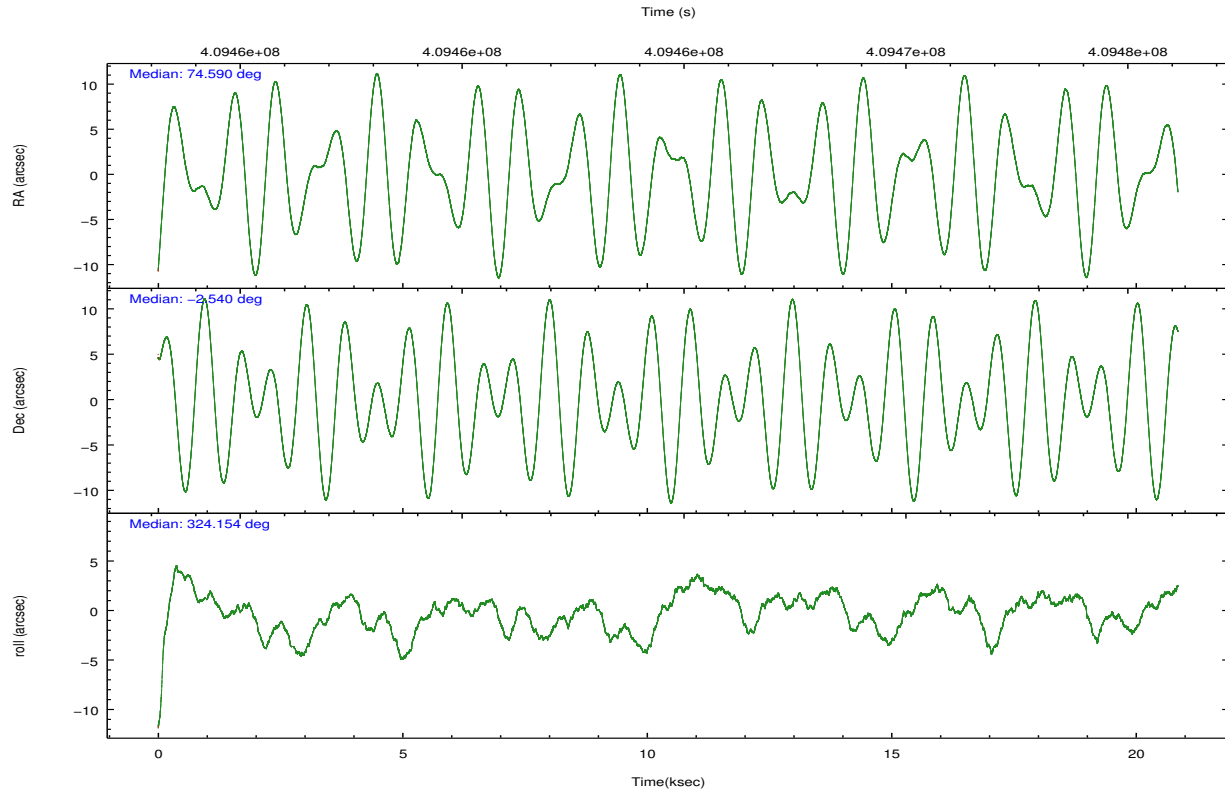
	ccd 3	ccd 5	ccd 6	ccd 7	ccd 8
grade 0 events	4952	8147	5691	6935	13240
	3%	3%	3%	3%	7%
grade 1 events	73	336	89	225	165
	0%	0%	0%	0%	0%
grade 2 events	3171	32033	3598	15835	11353
	2%	14%	2%	9%	6%
grade 3 events	1586	4078	1704	6882	5048
	1%	1%	1%	3%	2%
grade 4 events	1616	3787	1568	6883	4667
	1%	1%	1%	3%	2%
grade 5 events	6528	16718	6387	18519	9571
	4%	7%	4%	10%	5%
grade 6 events	3015	55983	3460	41195	13429
	2%	26%	2%	23%	7%
grade 7 events	115691	92602	121725	78992	129460
	84%	43%	84%	45%	69%

2.2 Compared Parameters

Parameter	Planned	Actual	Parameter	Planned	Actual
Instrument	ACIS	ACIS	Obspar format version number	7	7
Detector	ACIS-35678	ACIS-35678	Obspar file type	PREDICTED	ACTUAL
Grating	NONE	NONE	Obspar update status	NONE	UPDATED
Data mode	VFAINT	VFAINT	CCD I0 on	N	N
Observation mode	POINTING	POINTING	CCD I1 on	N	N
[deg] Pointing RA	74.562899	74.59019055737519	CCD I2 on	N	N
[deg] Pointing Dec	-2.537433	-2.539831327920582	CCD I3 on	O1	Y
[deg] Pointing Roll	323.999013	324.1568418113586	CCD S0 on	N	N
[mm] SIM focus pos	-0.684267	-0.6828225247311905	CCD S1 on	Y	Y
[mm] SIM defocus	0	0.001444936568705701	CCD S2 on	Y	Y
[mm] SIM translation stage pos	-190.132523	-190.1400660498719	CCD S3 on	Y	Y
[mm] SIM translation stage offset	0	0.00754346686406393	CCD S4 on	Y	Y
[s] Observation start time (MET)	409455060.184000	409453627.35764	CCD S5 on	N	N
Observation start date	2010-12-23T01:29:54	2010-12-23T01:07:07	Number of optional ACIS chips dropped	0	0
[s] Observation end time (MET)	409475060.184000	409476054.3588	On-chip summing requested	N	N
Observation end date	2010-12-23T07:03:14	2010-12-23T07:20:54	Subarray requested	NONE	NONE
Read mode	TIMED	TIMED	Alternating exposures requested	N	N
			[s] Primary exposure time	0.000000	3.1

2.3 Aspect



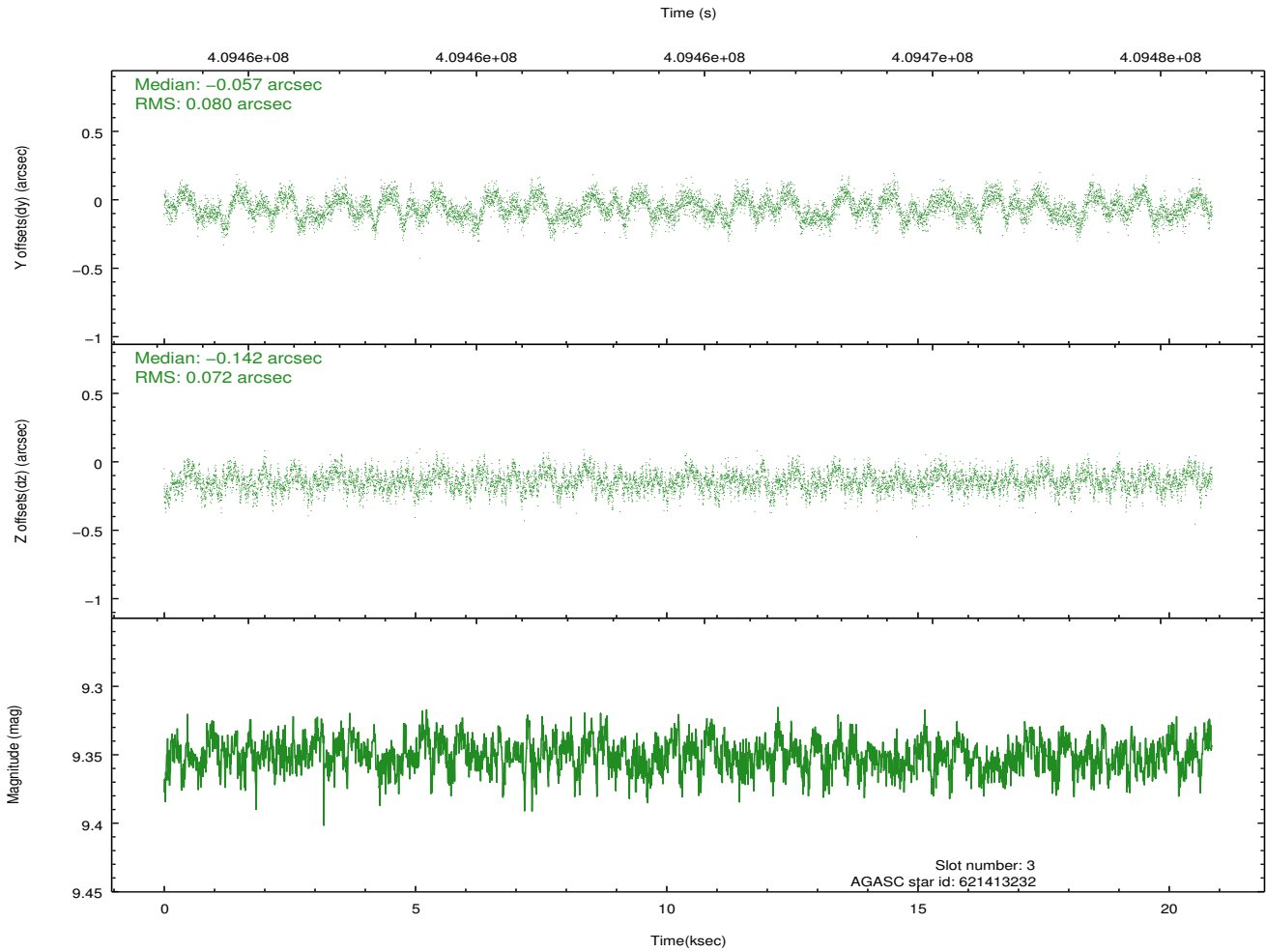
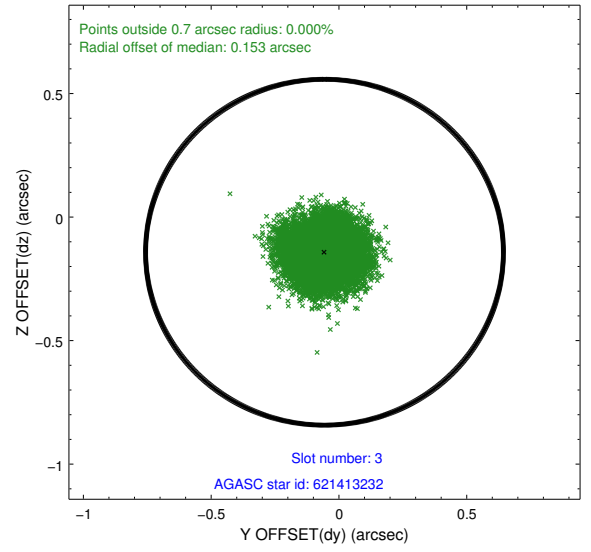
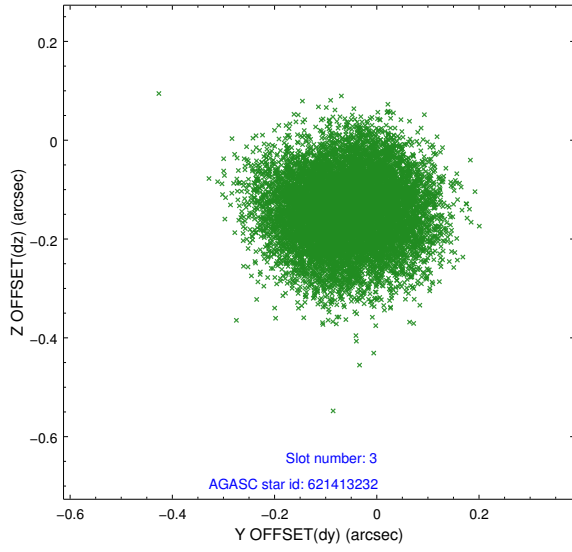


Slot Statistics

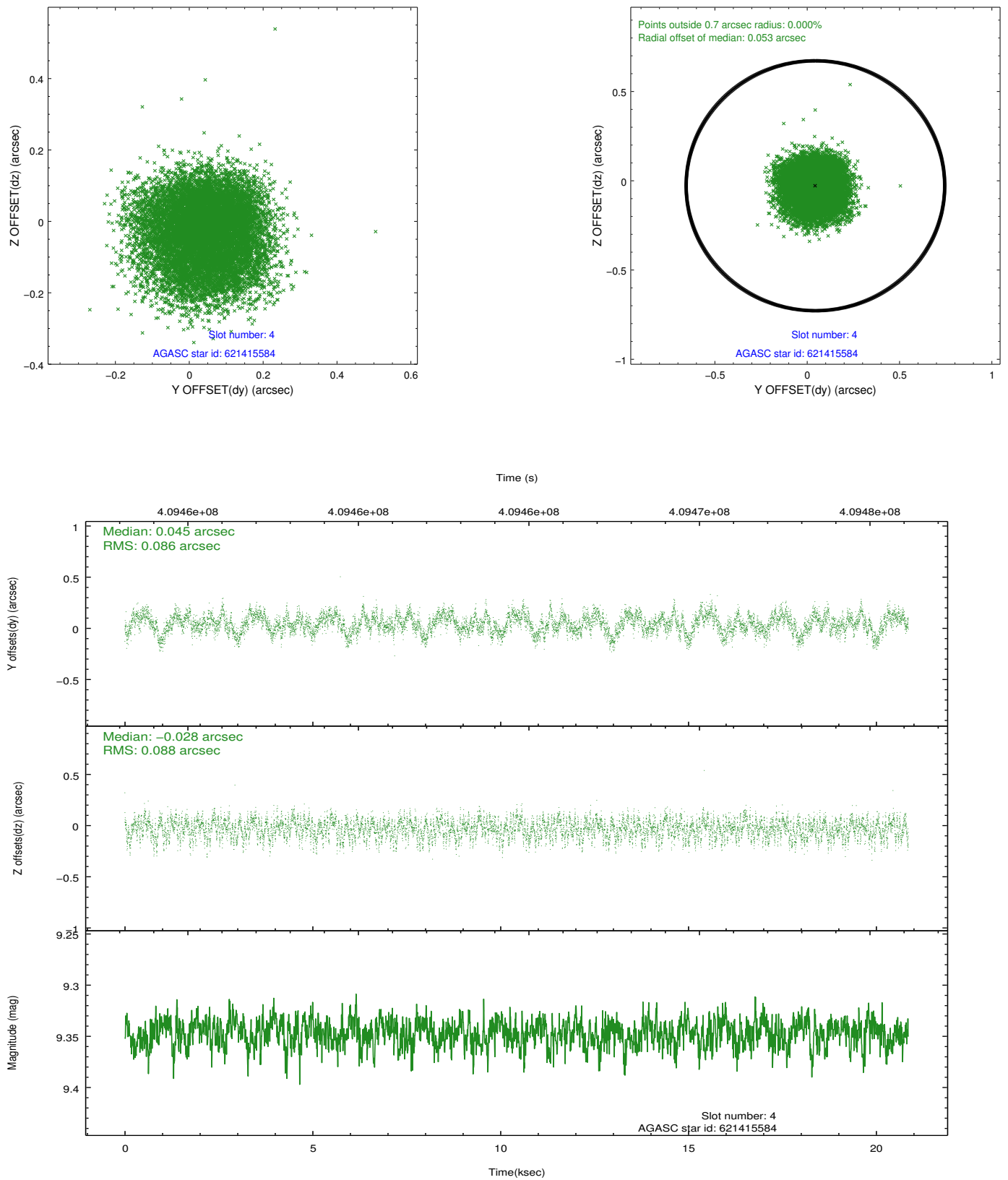
slot	status	id	mag	n_pts	med_dy	med_dz	dr1	dr2	ra	dec	mean_y	mean_z
0	FID	ACIS-S-2	6.94	5088	-0.125	-0.080	0.007	0.014	0.000000	0.000000	-767.76	-1736.15
1	FID	ACIS-S-4	7.02	5088	0.126	0.070	0.009	0.016	0.000000	0.000000	2145.72	172.25
2	FID	ACIS-S-6	7.17	5087	-0.029	0.017	0.008	0.015	0.000000	0.000000	394.59	809.82
3	GUIDE	621413232	9.35	10163	-0.057	-0.142	0.117	0.179	74.129579	-2.184808	-2007.08	110.35
4	GUIDE	621415584	9.35	10161	0.045	-0.028	0.134	0.207	74.871644	-2.066551	-97.87	2024.26
5	GUIDE	621415920	9.85	10161	0.125	0.096	0.213	0.319	74.325688	-2.813322	-105.94	-1304.68
6	GUIDE	621417600	9.64	10161	-0.079	0.110	0.142	0.237	73.769107	-2.601844	-2172.60	-1866.43
7	GUIDE	623117120	9.74	10153	-0.037	-0.029	0.137	0.217	75.225960	-2.418644	1678.49	1747.14

2.4 Star Slots

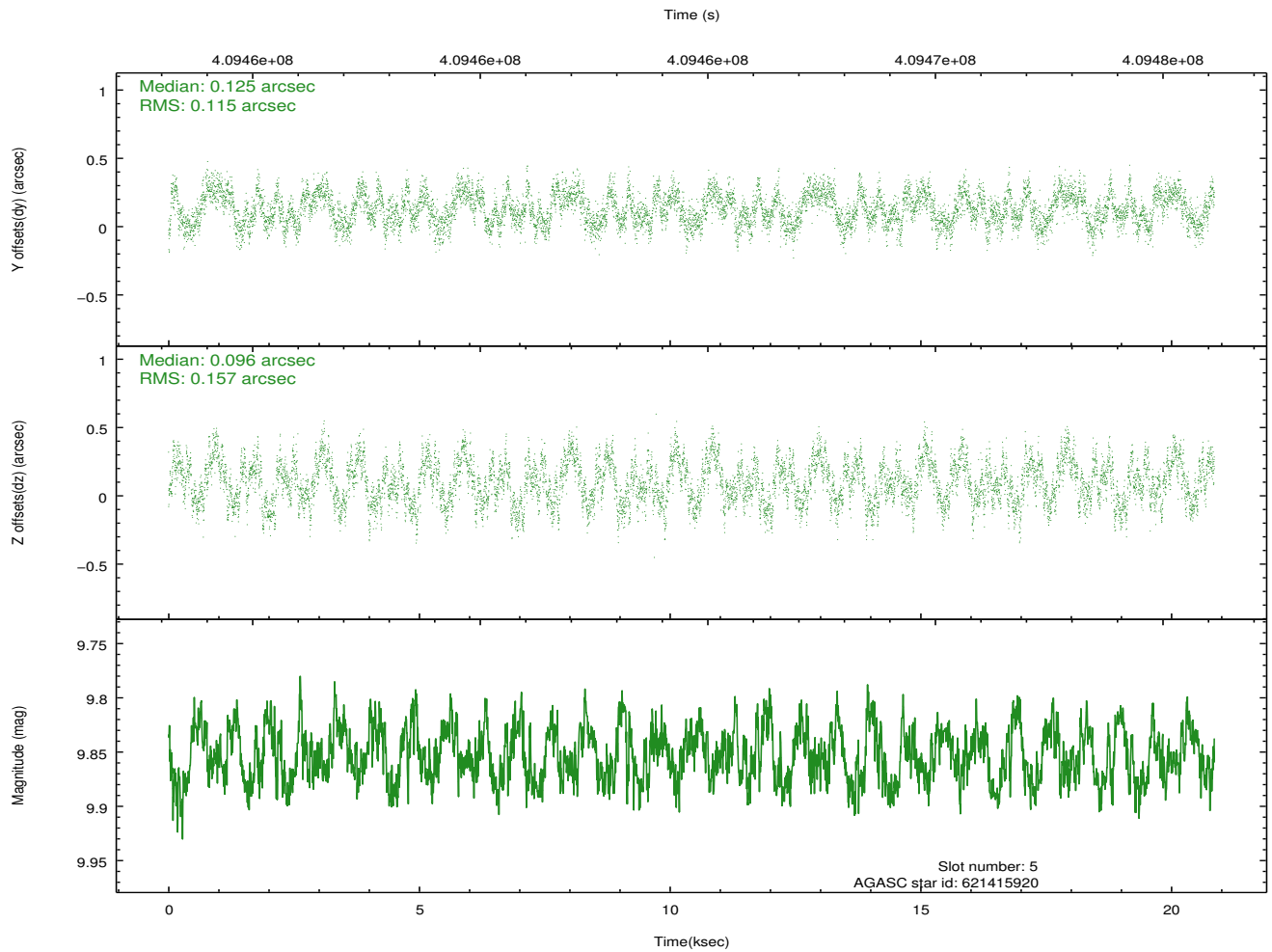
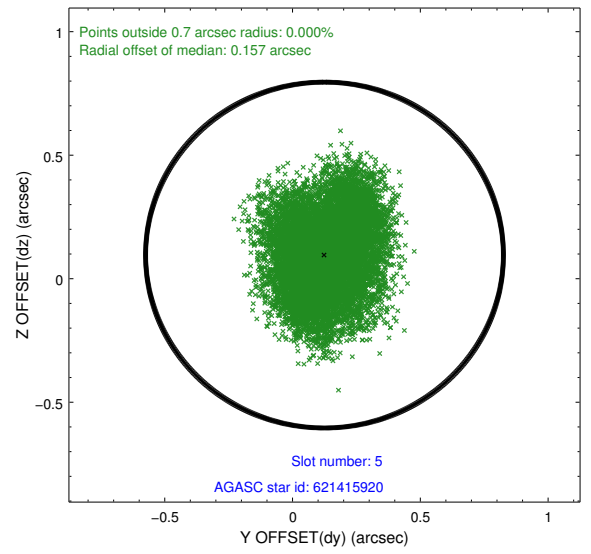
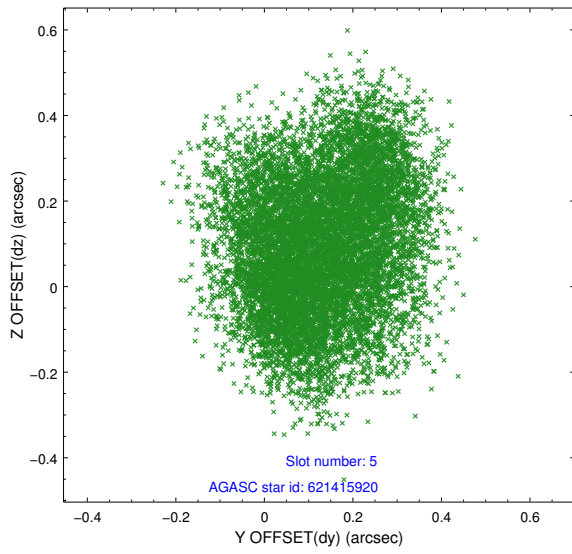
2.4.1 Slot 3



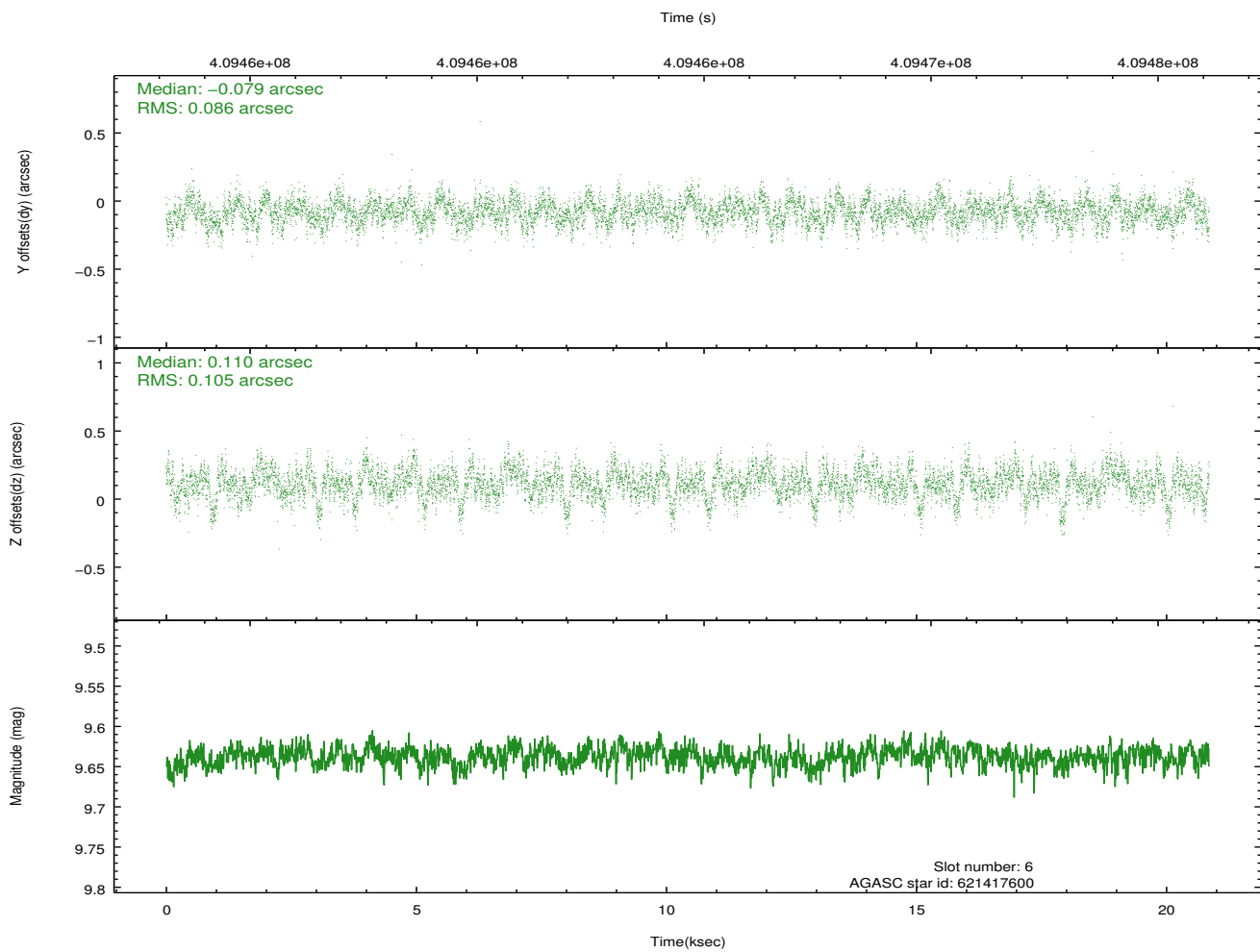
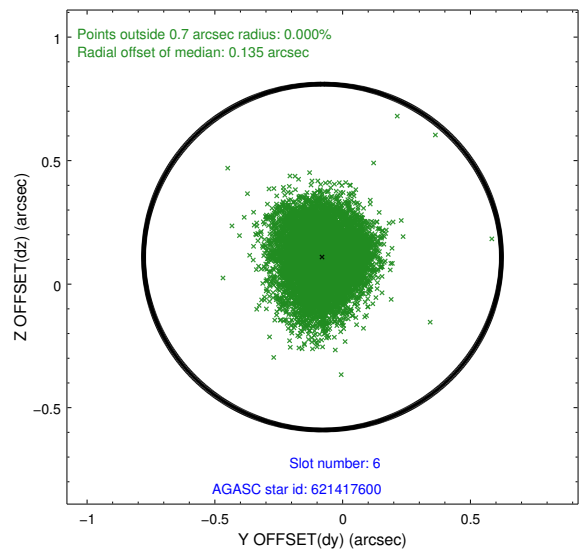
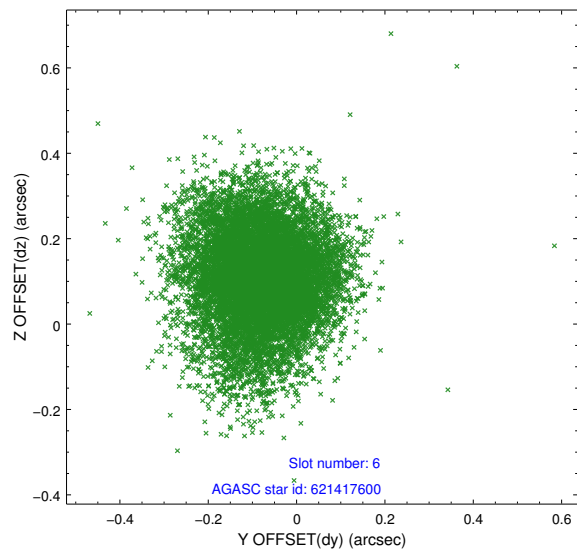
2.4.2 Slot 4



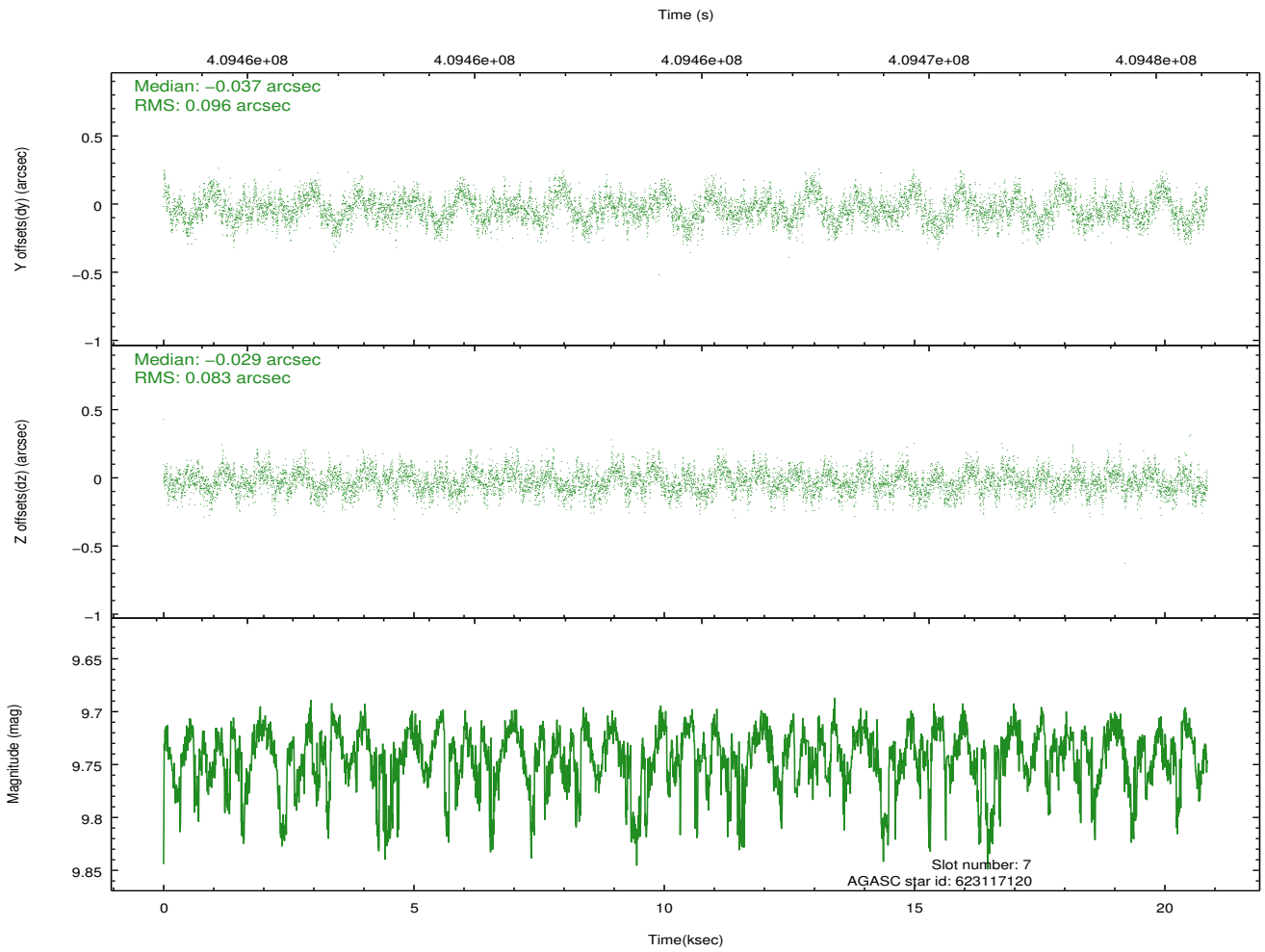
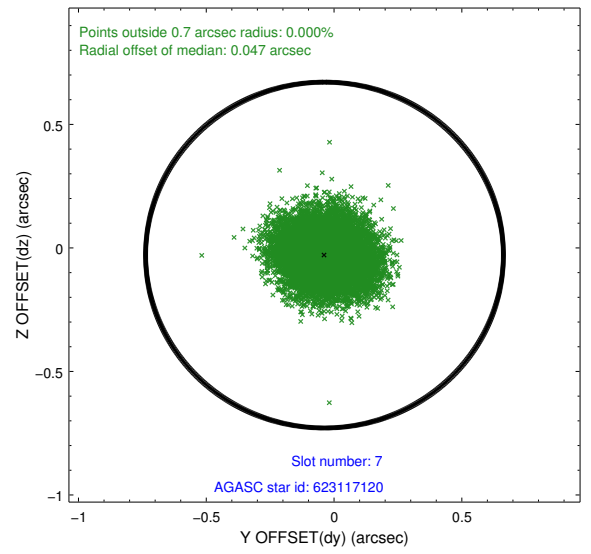
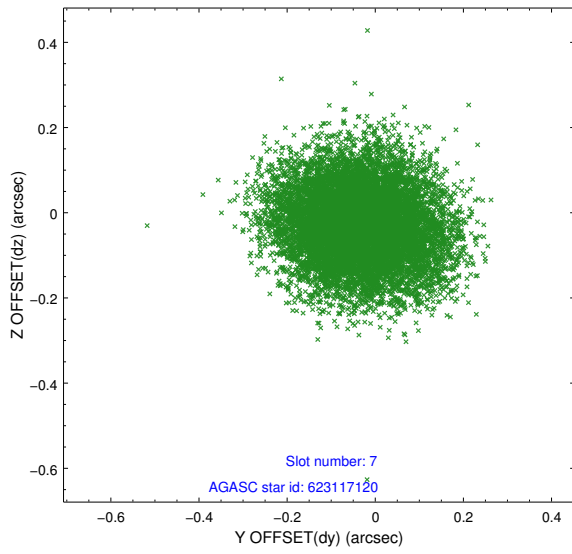
2.4.3 Slot 5



2.4.4 Slot 6

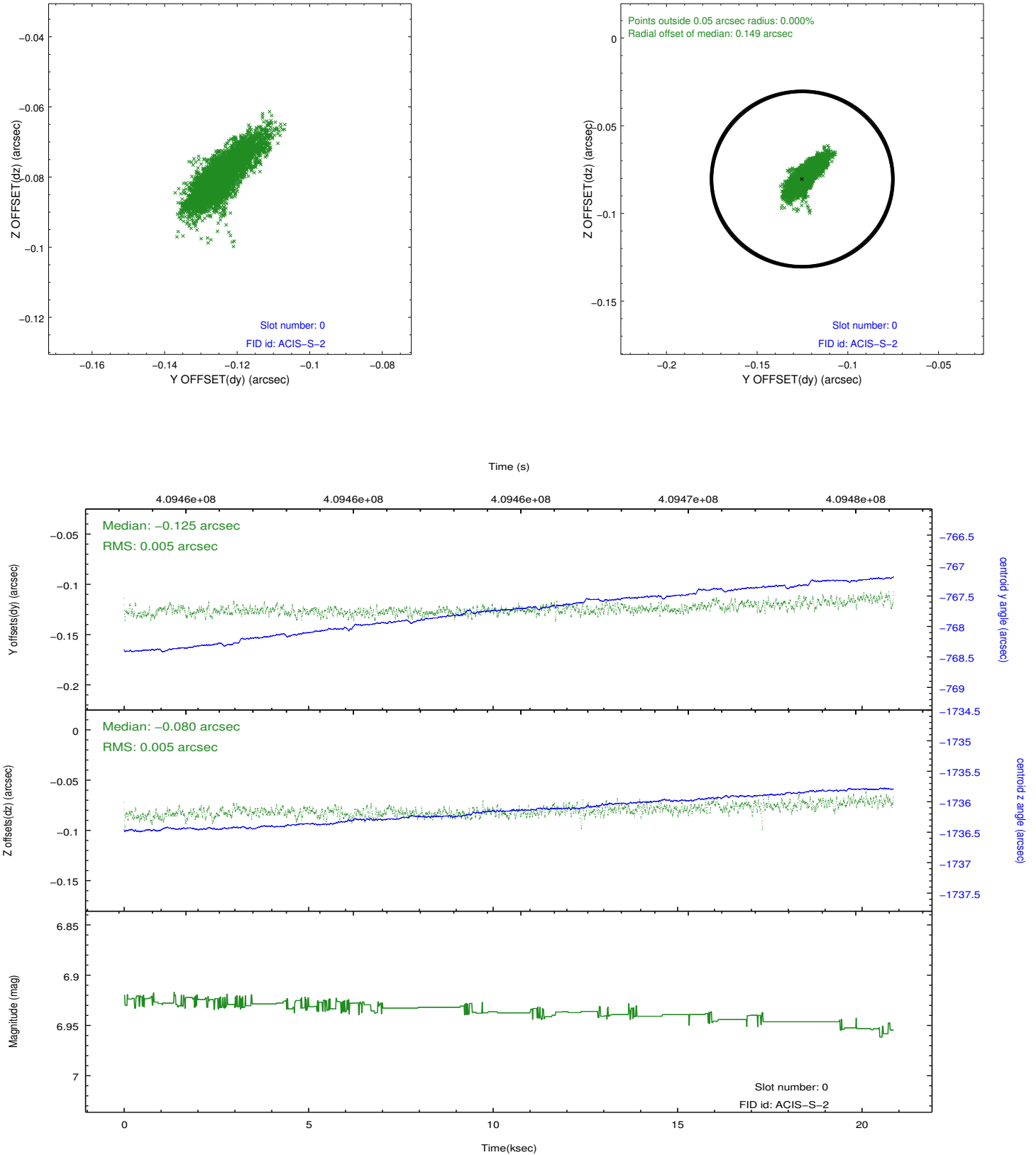


2.4.5 Slot 7

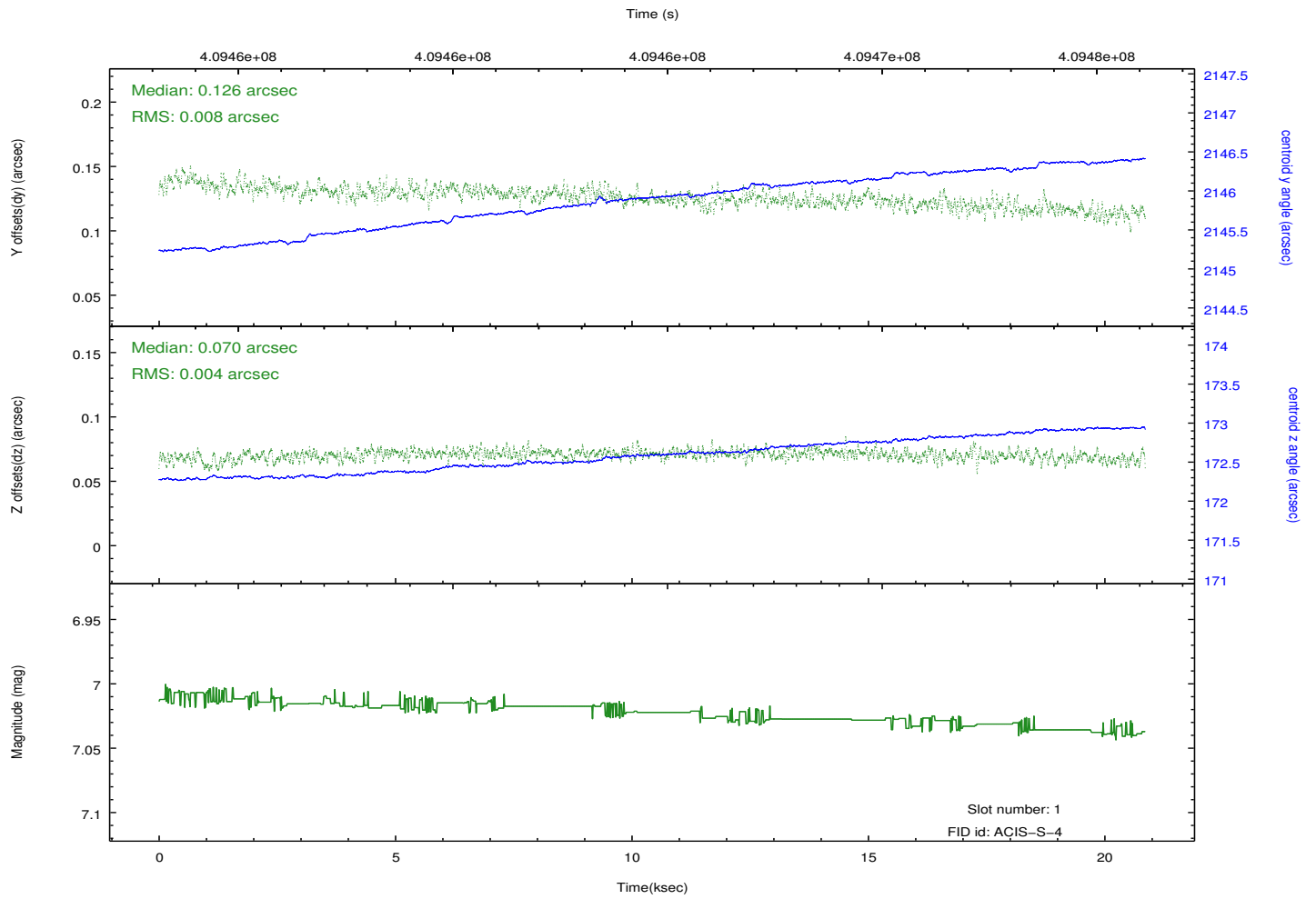
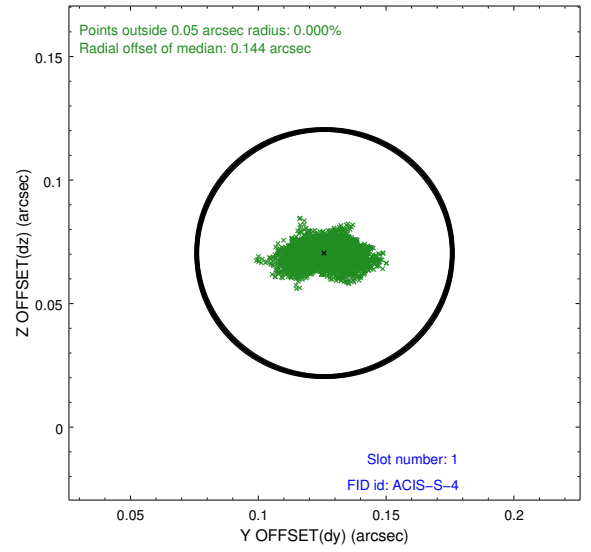
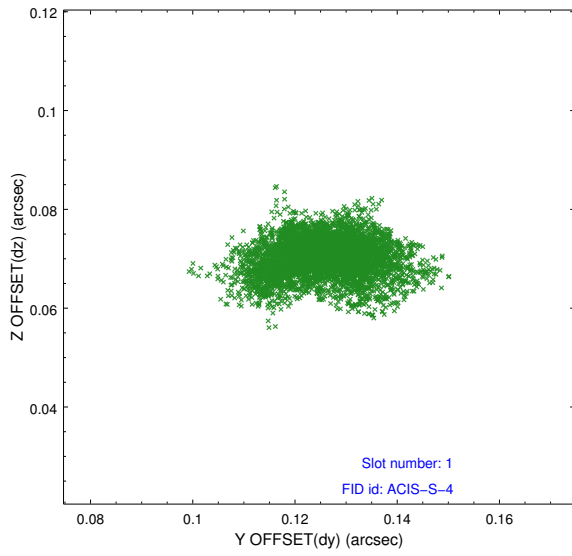


2.5 FID Slots

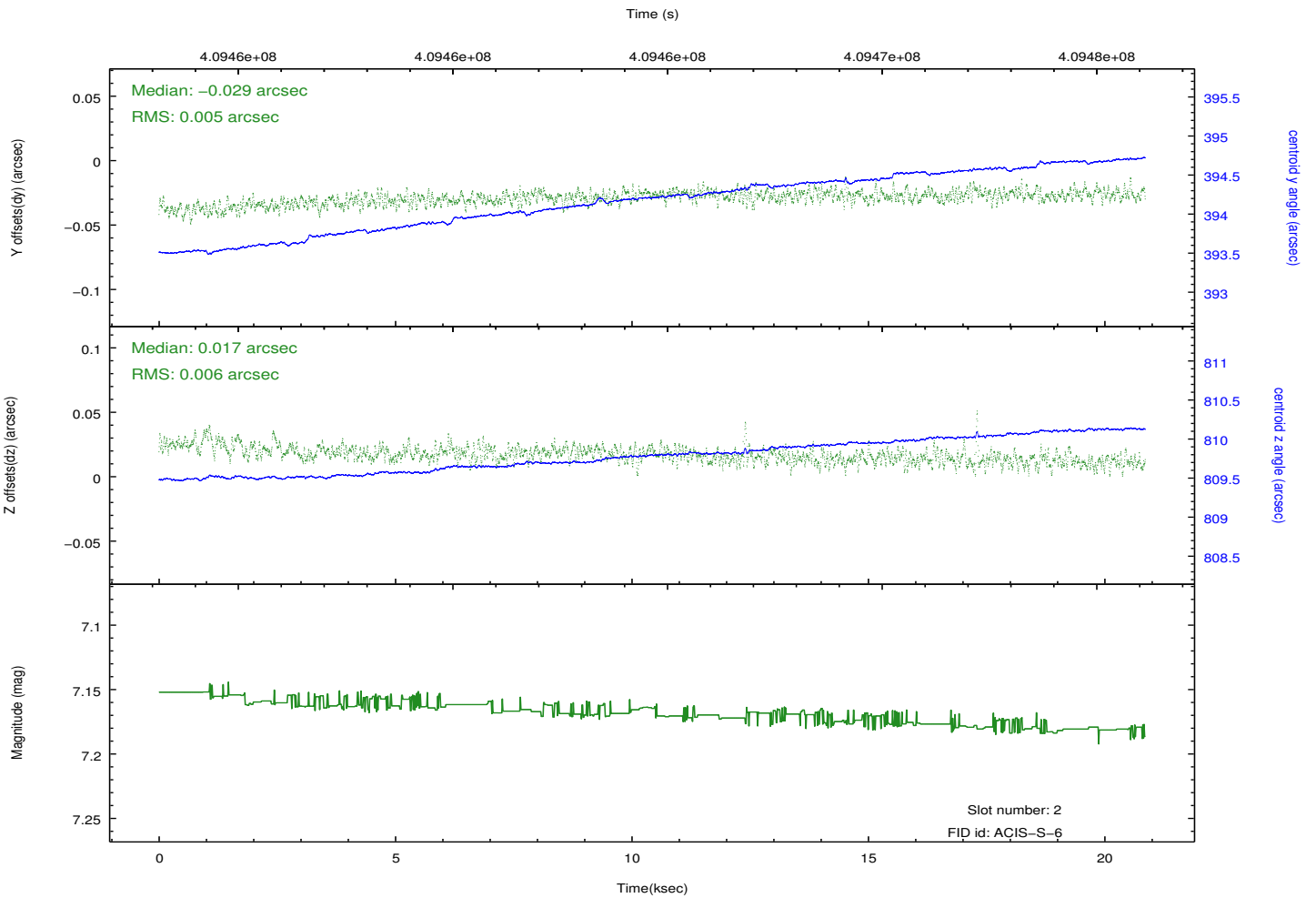
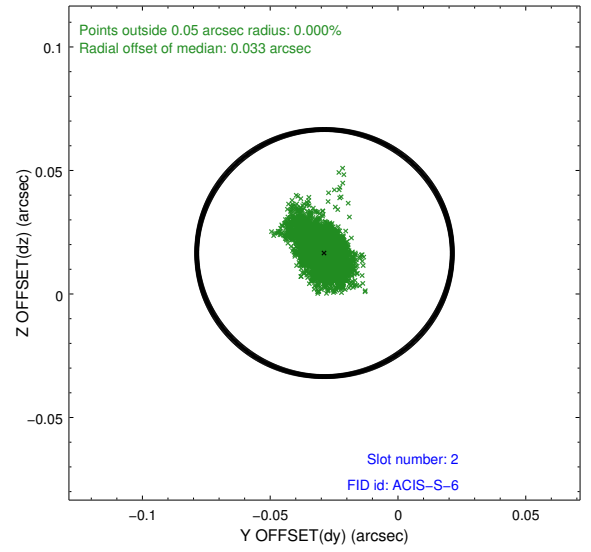
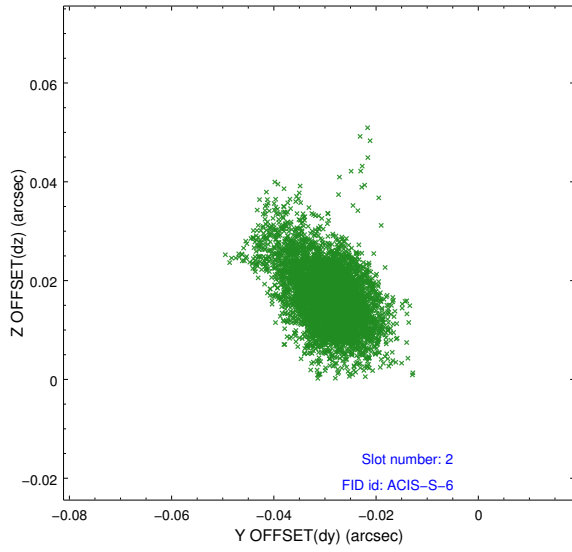
2.5.1 Slot 0



2.5.2 Slot 1



2.5.3 Slot 2



A Summary

A.1 Status

V&V Scientist	Jen Lauer
V&V Date (YYYY-MM-DD)	2012.07.17
V&V Edition	1
V&V Disposition and Status	OK
V&V Charge Time	20.037675299168

A.2 Comments