

V&V Reference Report

L2 ASCDS Version : 8.1.2

Observation 1156 - L2 Version 6
Chandra X-Ray Center

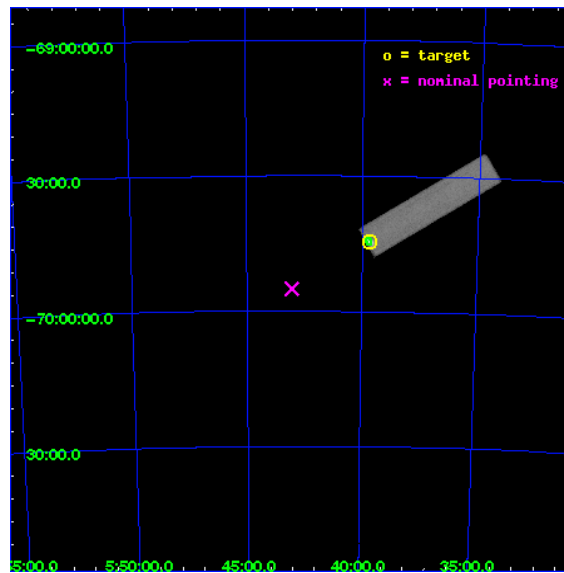
L2 Processing Date : Dec 2 2009

Contents

1	Front	2
2	OBI	3
2.1	OBI	3
2.1.1	Images	3
2.1.2	Parameters	4
2.1.3	Events	4
2.2	Compared Parameters	5
2.3	Aspect	6
2.4	Star Slots	9
2.4.1	Slot 3	9
2.4.2	Slot 4	10
2.4.3	Slot 5	11
2.4.4	Slot 6	12
2.4.5	Slot 7	13
2.5	FID Slots	14
2.5.1	Slot 0	14
2.5.2	Slot 1	15
2.5.3	Slot 2	16
3	Point Sources	17
A	Summary	18
A.1	Status	18
A.2	Comments	18

1 Front

seq_num	480106	Sequence number
obs_id	1156	Observation id
title	 	Proposal title
observer	Dr. CXC Calibration	Principal investigator
object	LMC X-1	Source name
ra_targ	84.914583	Observer's specified target RA
dec_targ	-69.743611	Observer's specified target Dec
ra_nom	85.757549262133	Nominal RA
dec_nom	-69.917980482422	Nominal Dec
roll_nom	329.5936824213	Nominal Roll
revision	6	Processing version of data
ontime	2202.9813300297	[s]
livetime	2188.1097980363	Ontime multiplied by DTCOR
l2events	111038	Number of level 2 events

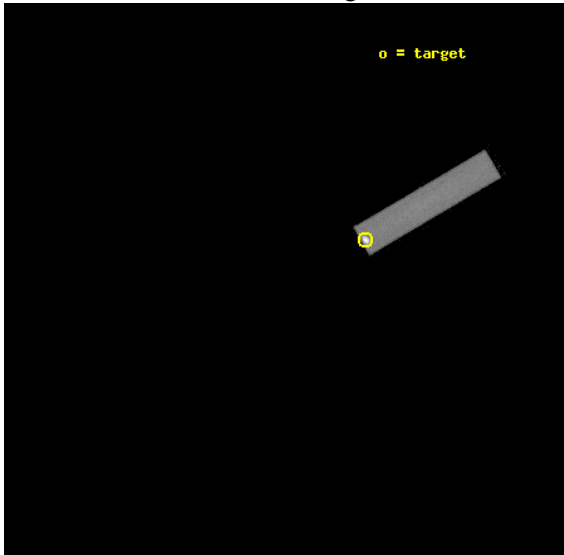


2 OBI

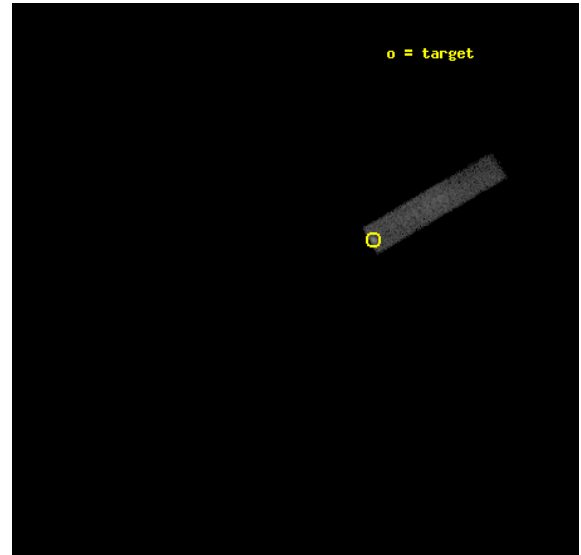
2.1 OBI

2.1.1 Images

Level 1 Image



Level 1 Bad Events



2.1.2 Parameters

obi_num	1	Obi number	sched_exp_time	2000.000000	Scheduled observation exposure time
ascdsver	8.1.2	Processing system revision	ontime	2202.9813300297	[s]
caldbver	4.1.4	 	l1events	148318	Number of level 1 events
date	2009-12-02T17:24:02	Date and time of file creation			
revision	5	Processing version of data			

2.1.3 Events

Level 1 Events

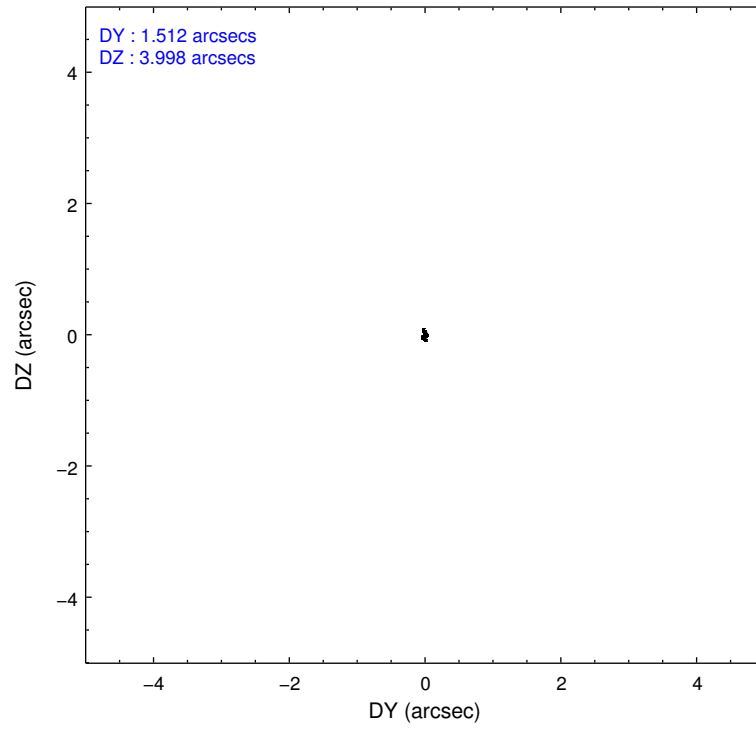
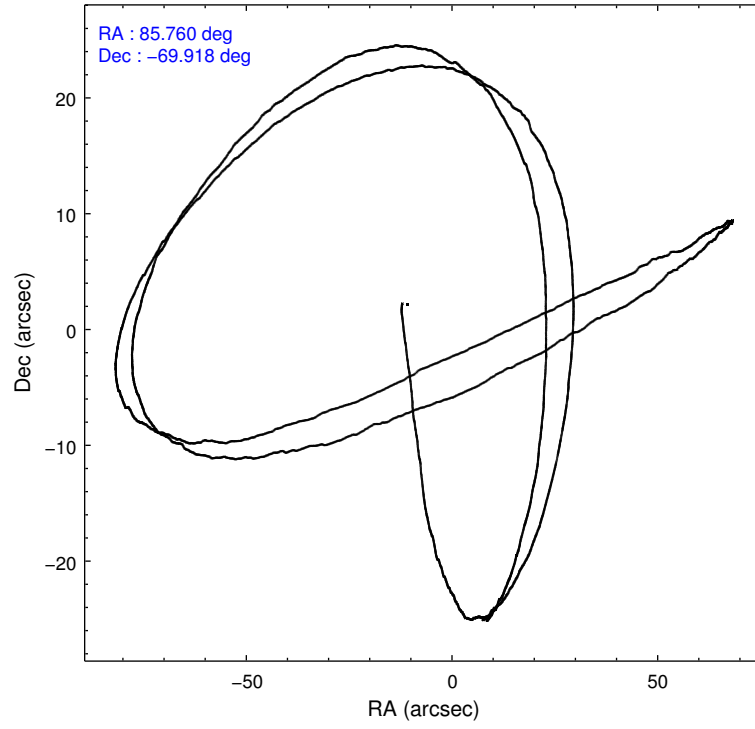
	segment 1	segment 2	segment 3
level 1 events	148275	43	0
rejected events	26696	2	0
rejected %	18%	4%	0%

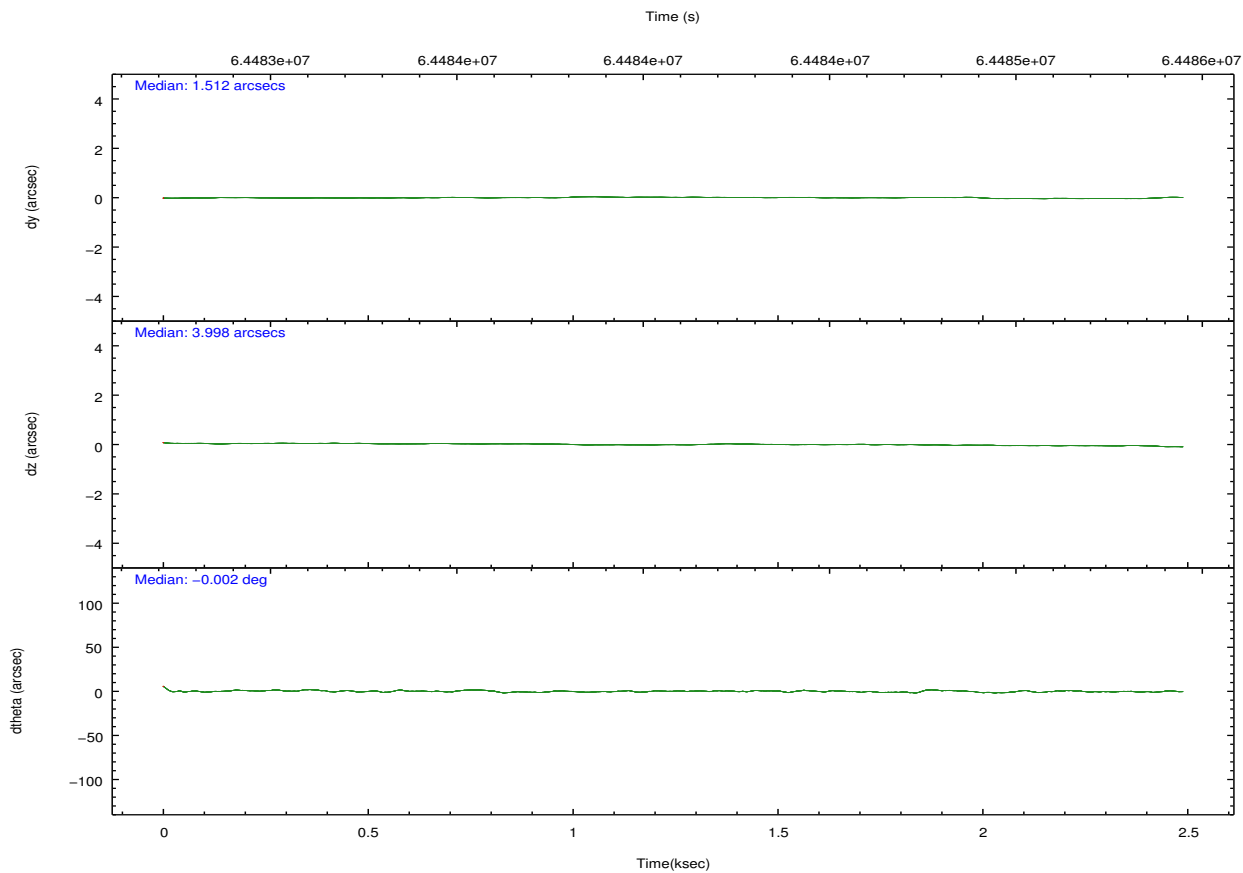
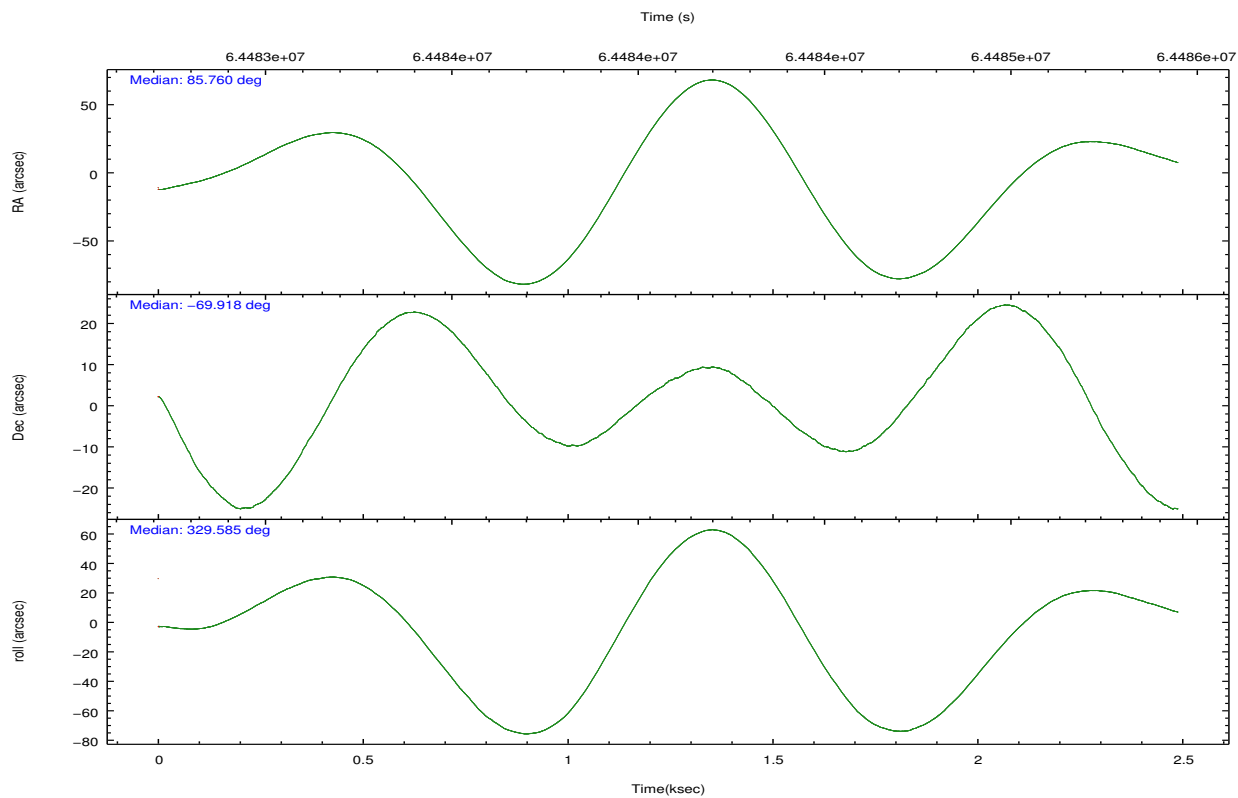
2.2 Compared Parameters

Parameter	Planned	Actual
Instrument	HRC	HRC
Detector	HRC-S	HRC-S
Grating	NONE	NONE
Data mode	OBSERVING	OBSERVING
Observation mode	POINTING	POINTING
Pointing RA	85.672605	85.75754926213291
Pointing Dec	-69.918365	-69.91798048242202
Pointing Roll	329.446572	329.593682421304
SIM focus pos (mm)	-1.528523	-1.428180813131781
SIM defocus (mm)	0.004813771043328752	0.1051558262725154
SIM translation stage pos (mm)	250.455976	250.466033080201
SIM translation stage offset (mm)	0	-0.01005468664627074
Observation start time	64483324.184000	64482657.79909
Observation start date	2000-01-17T08:01:00	2000-01-17T07:50:57
Observation end time	64485324.184000	64485458.099192
Observation end date	2000-01-17T08:34:20	2000-01-17T08:37:38

Parameter	Planned	Actual
Obspar format version number	6	6
Obspar file type	PREDICTED	ACTUAL
Obspar update status	NONE	UPDATED

2.3 Aspect



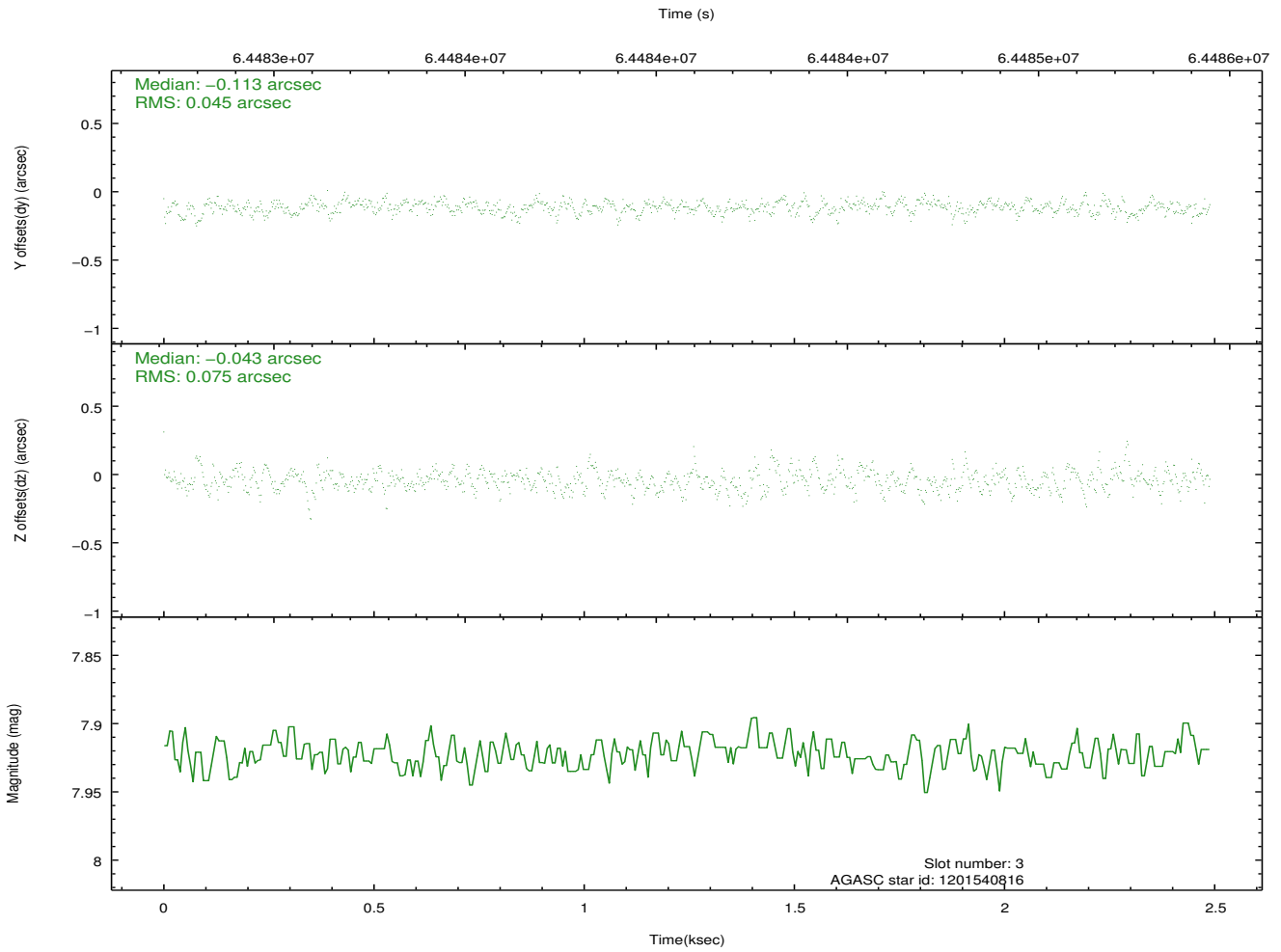
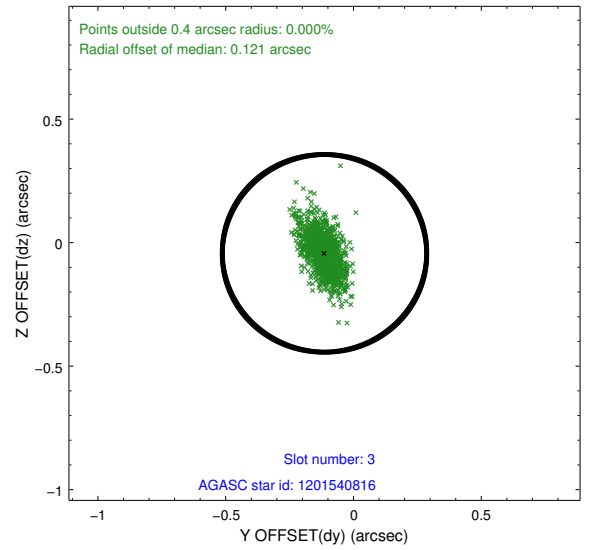
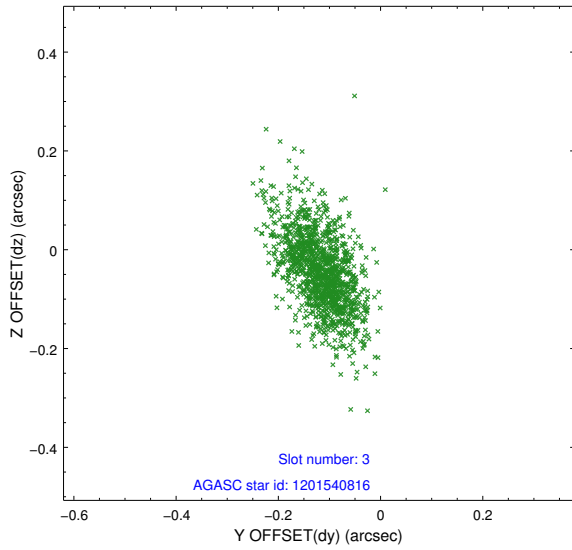


Slot Statistics

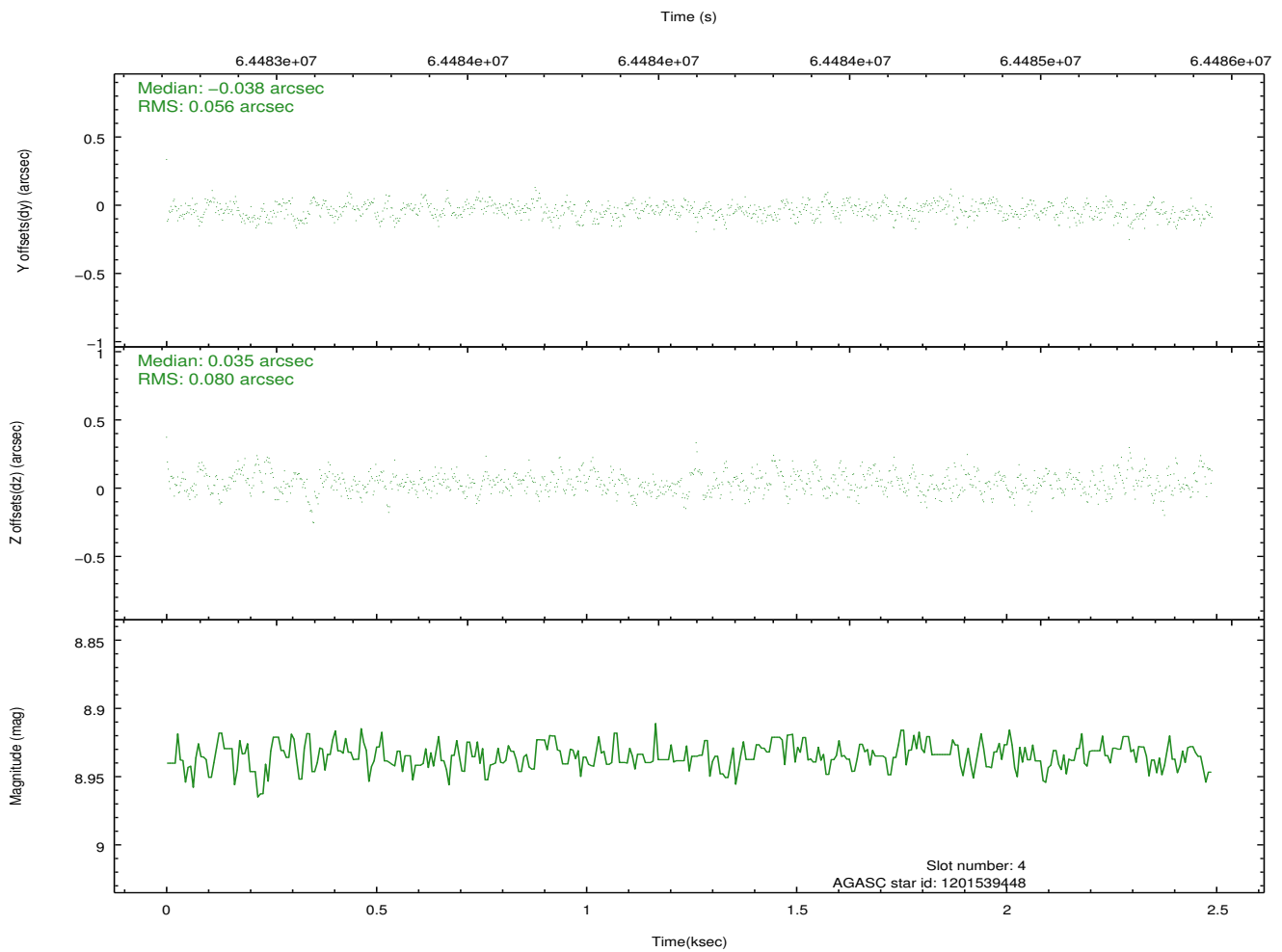
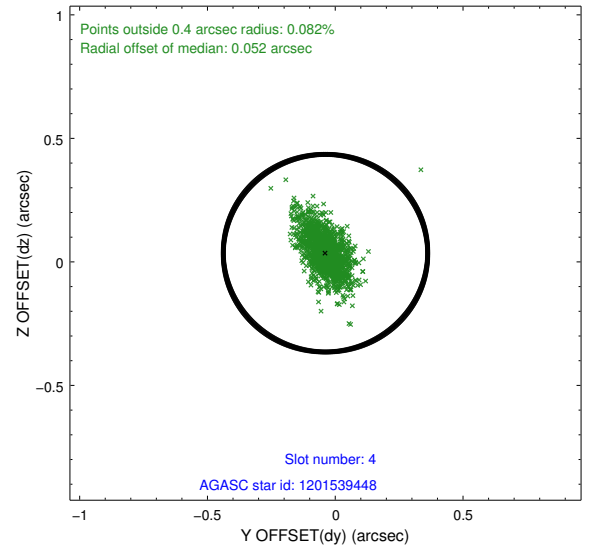
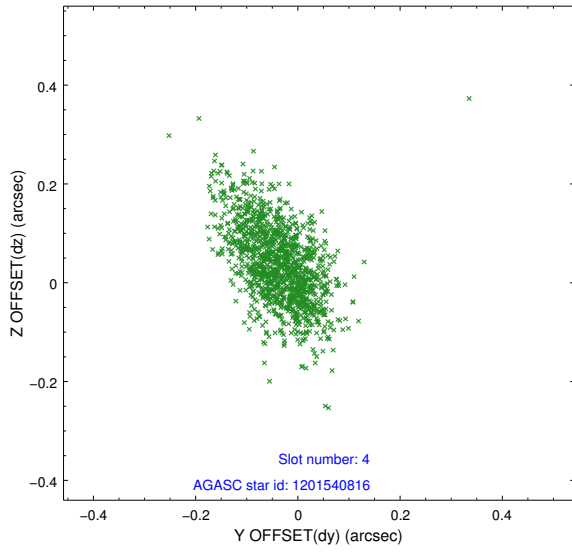
slot	status	id	mag	n_pts	med_dy	med_dz	dr1	dr2	ra	dec	mean_y	mean_z
0	FID	HRC-S-2	6.97	608	0.135	-0.099	0.008	0.014	0.000000	0.000000	1244.15	-445.10
1	FID	HRC-S-3	6.99	607	0.158	-0.098	0.006	0.013	0.000000	0.000000	-1156.15	576.39
2	FID	HRC-S-4	6.94	608	0.112	-0.099	0.008	0.014	0.000000	0.000000	1240.83	580.58
3	GUIDE	1201540816	7.92	1215	-0.113	-0.043	0.087	0.161	86.998494	-69.749817	1121.45	1346.89
4	GUIDE	1201539448	8.94	1215	-0.038	0.035	0.099	0.177	85.635707	-70.382152	810.06	-1459.34
5	GUIDE	1201542312	9.74	1212	0.012	0.042	0.117	0.203	86.031967	-70.422284	1295.68	-1344.01
6	GUIDE	1201017424	10.18	1214	0.068	-0.065	0.149	0.238	85.854985	-69.248506	-1026.14	2193.14
7	GUIDE	1201540376	9.26	1214	0.077	0.023	0.108	0.185	87.370568	-69.787305	1591.10	1456.49

2.4 Star Slots

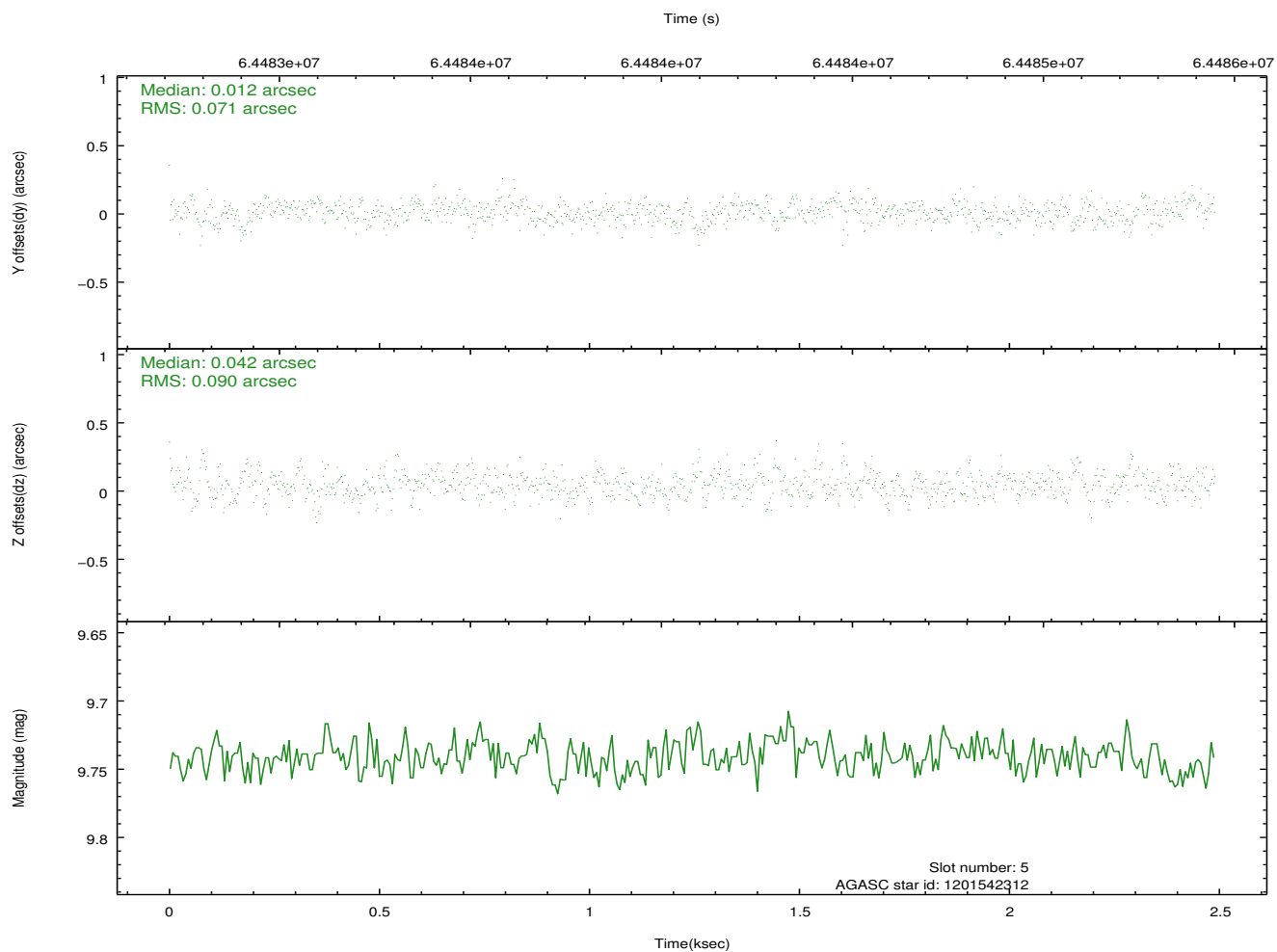
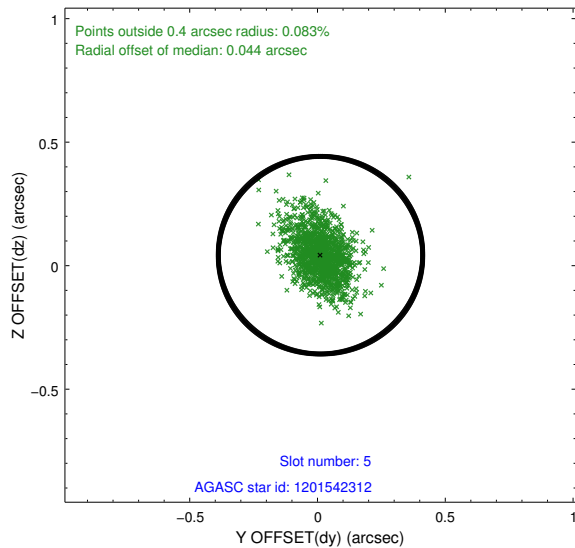
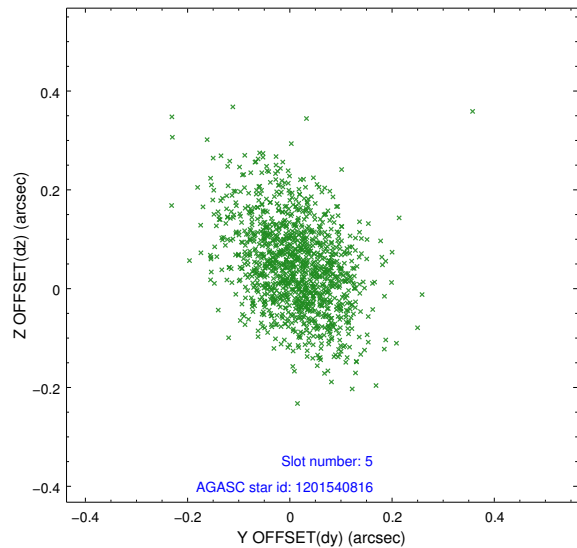
2.4.1 Slot 3



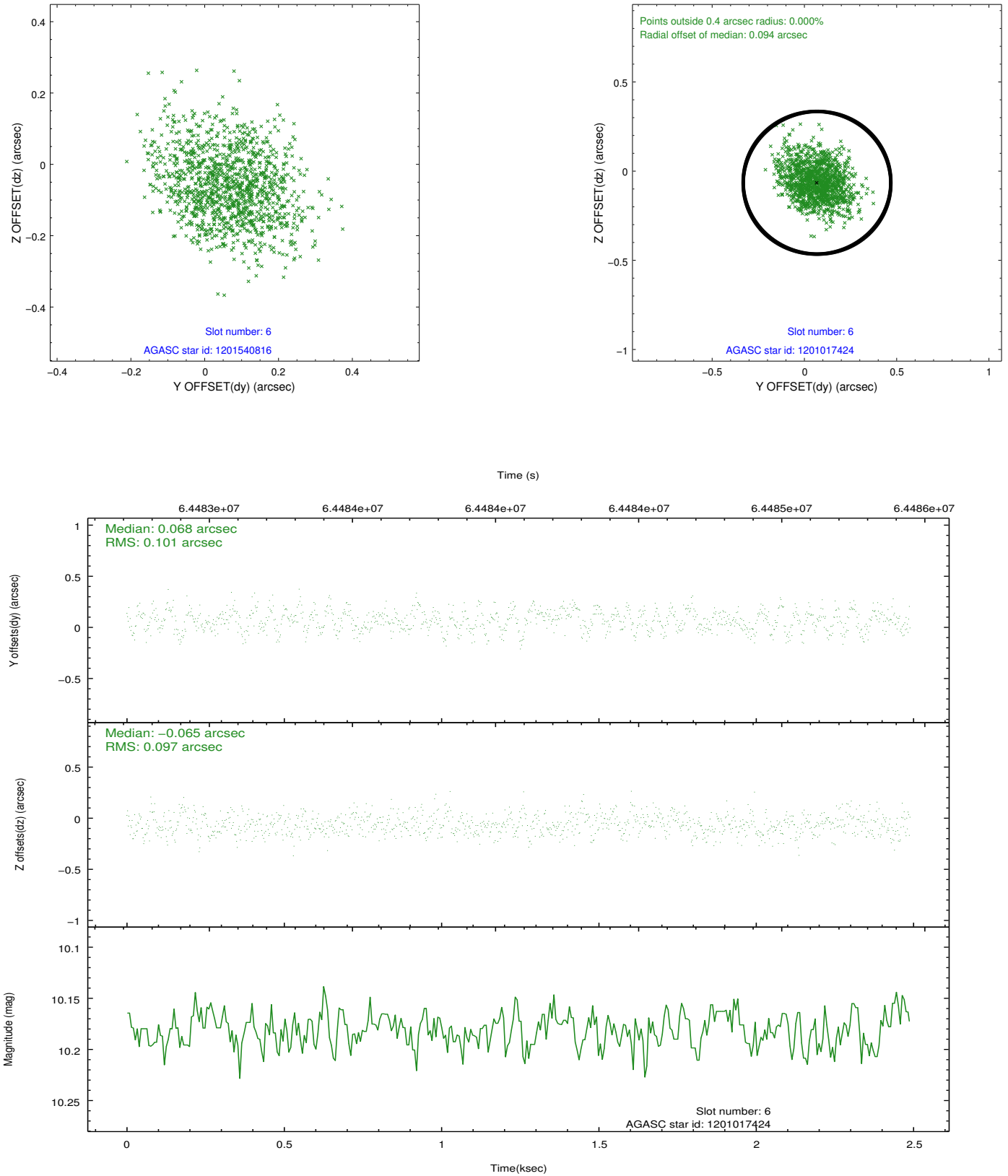
2.4.2 Slot 4



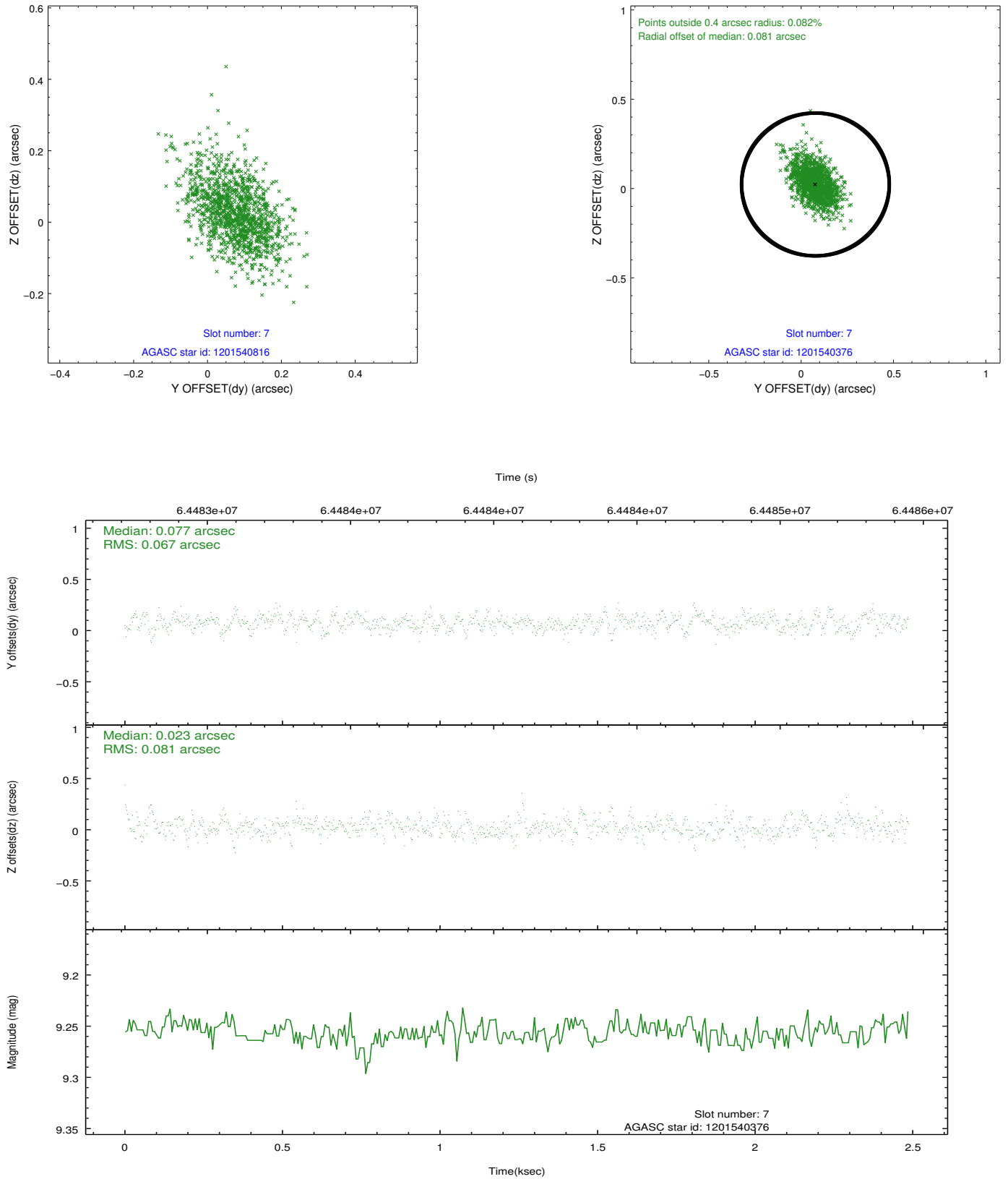
2.4.3 Slot 5



2.4.4 Slot 6

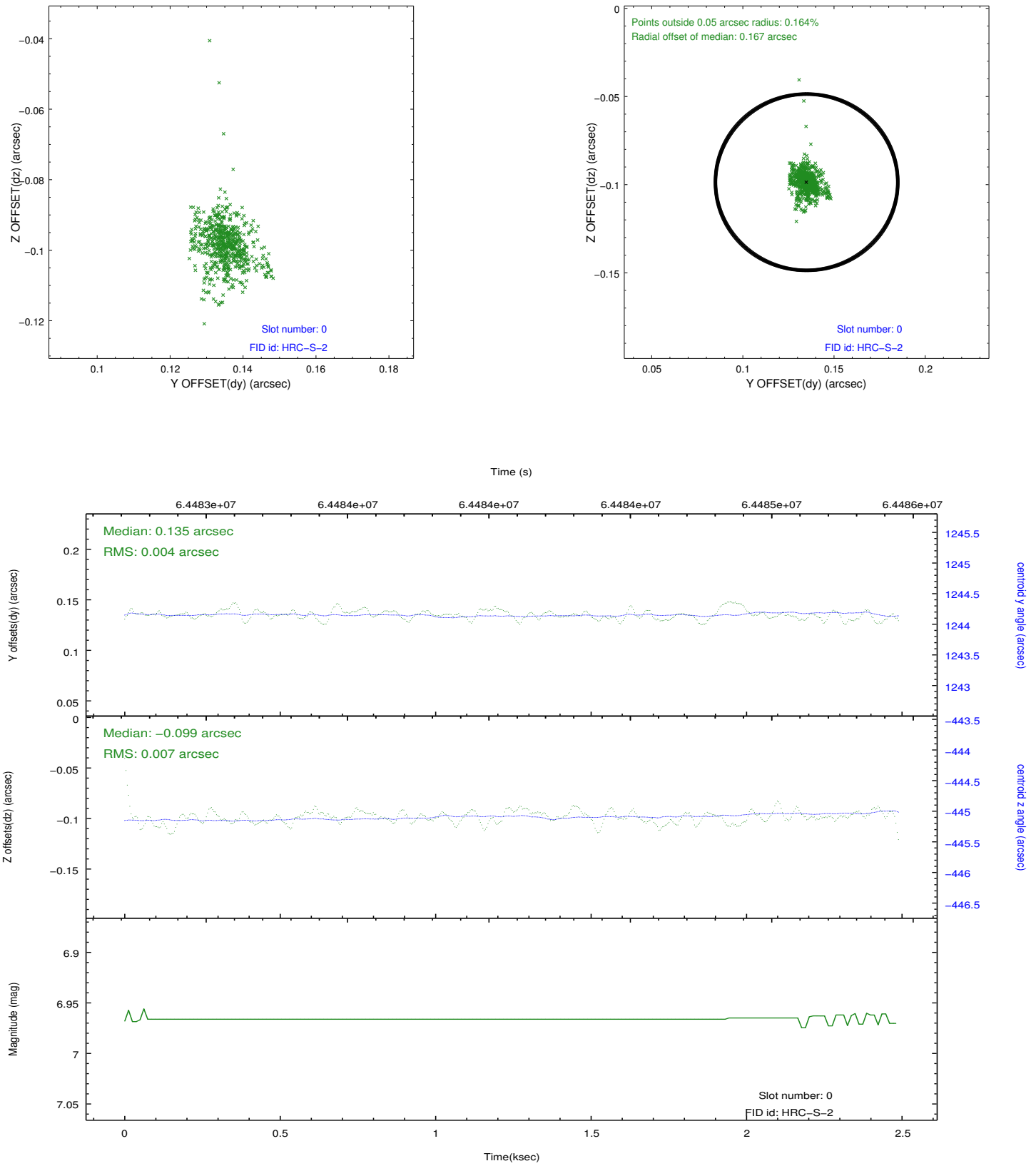


2.4.5 Slot 7

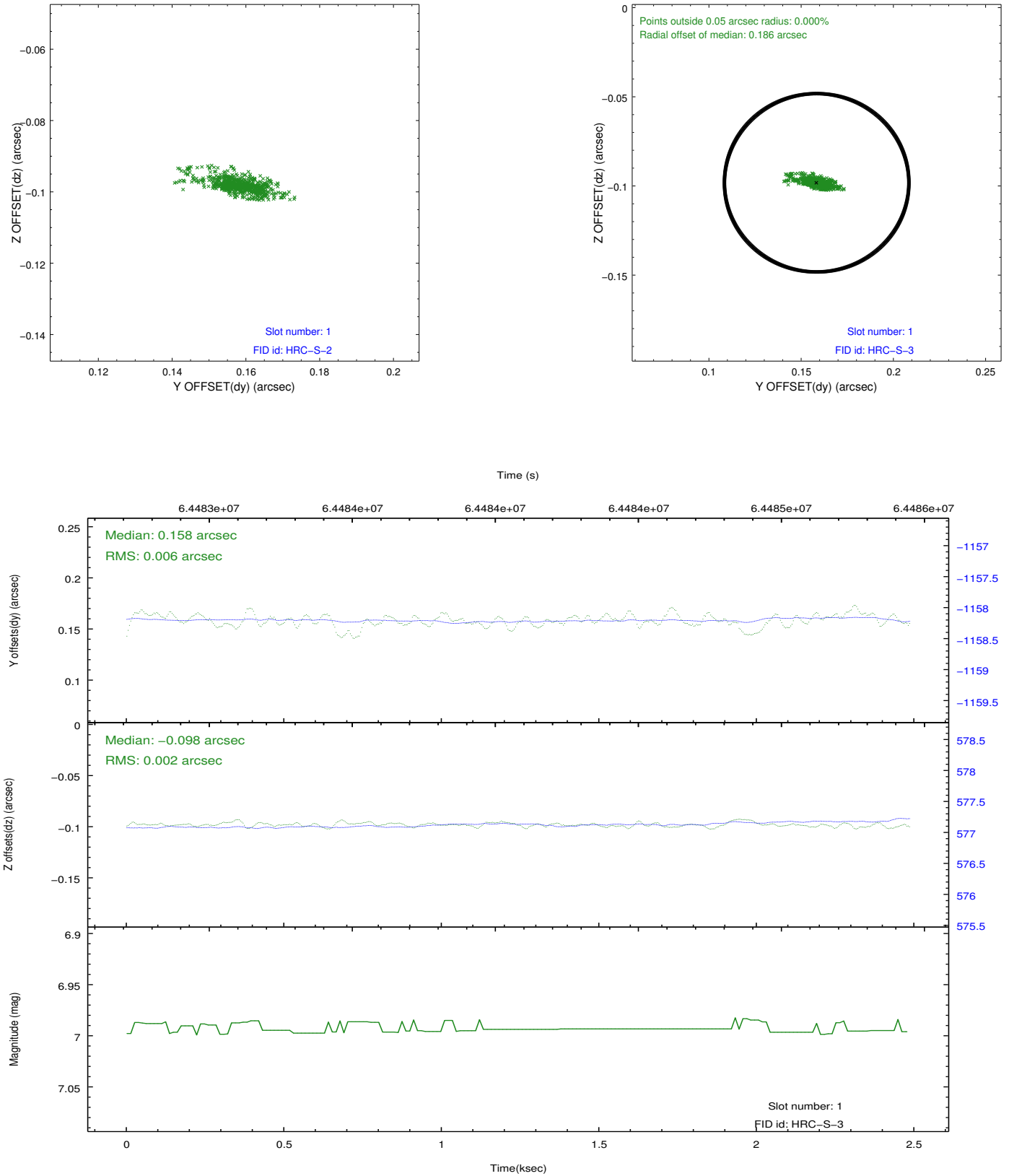


2.5 FID Slots

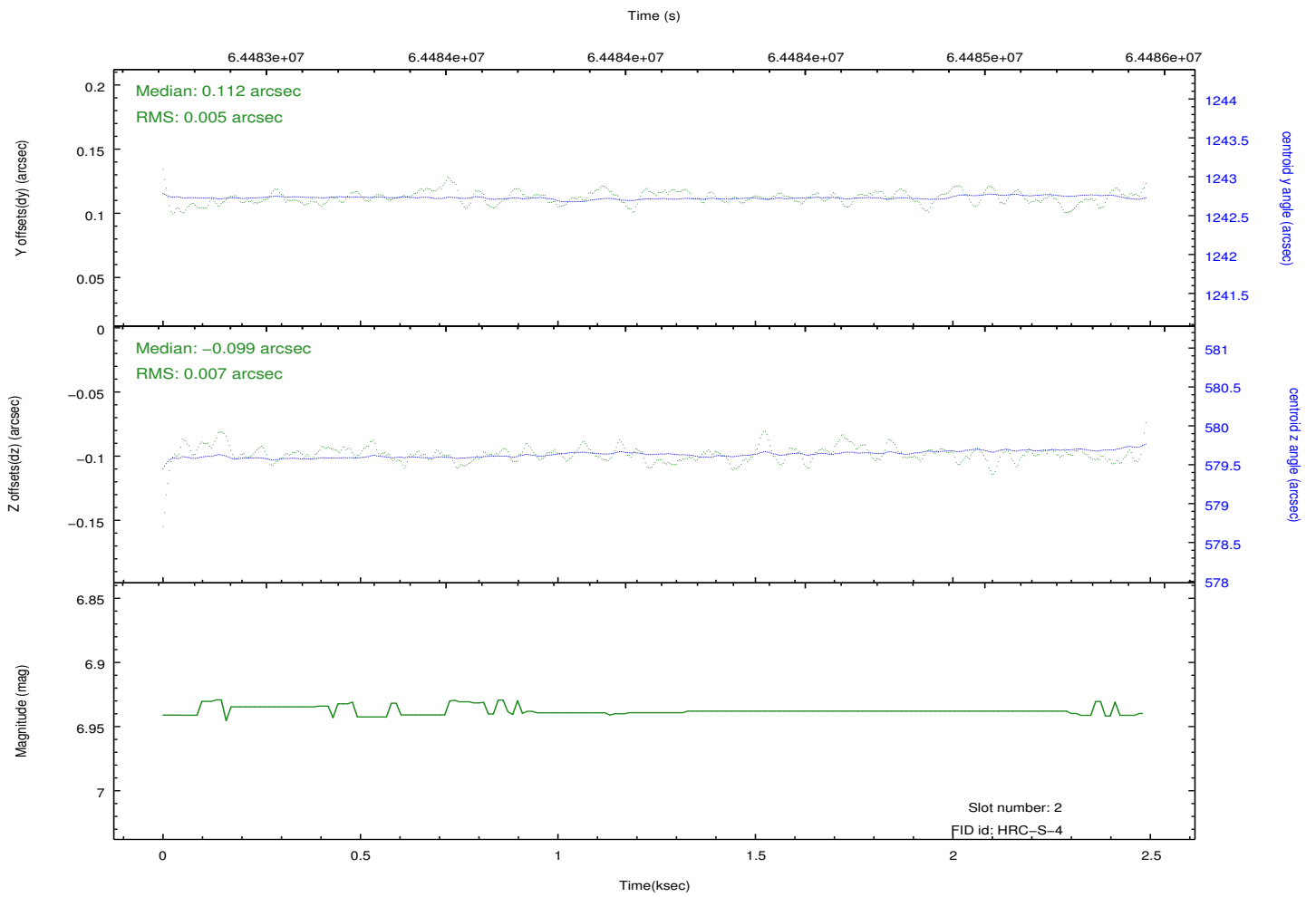
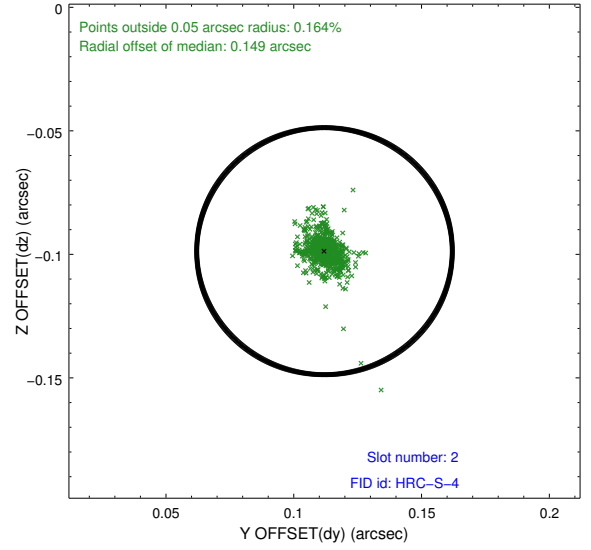
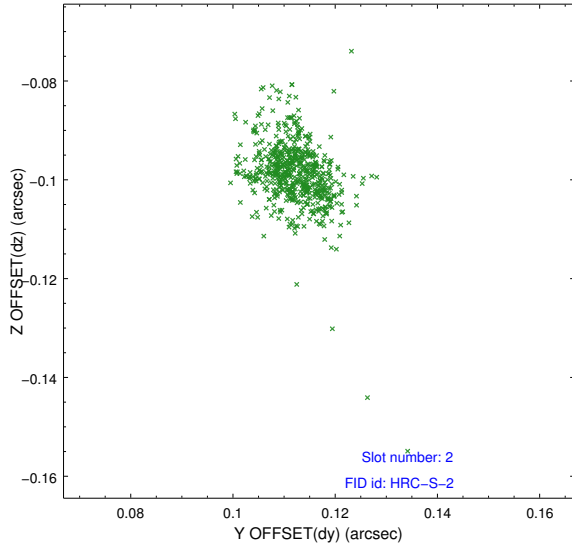
2.5.1 Slot 0



2.5.2 Slot 1



2.5.3 Slot 2



3 Point Sources

A Summary

A.1 Status

V&V Scientist	Joy Nichols
V&V Date (YYYY-MM-DD)	2009.12.03
V&V Edition	1
V&V Disposition and Status	OK
V&V Charge Time	2.202

A.2 Comments