

V&V Reference Report

L2 ASCDS Version : 8.4.5

Observation 11716 - L2 Version 2
Chandra X-Ray Center

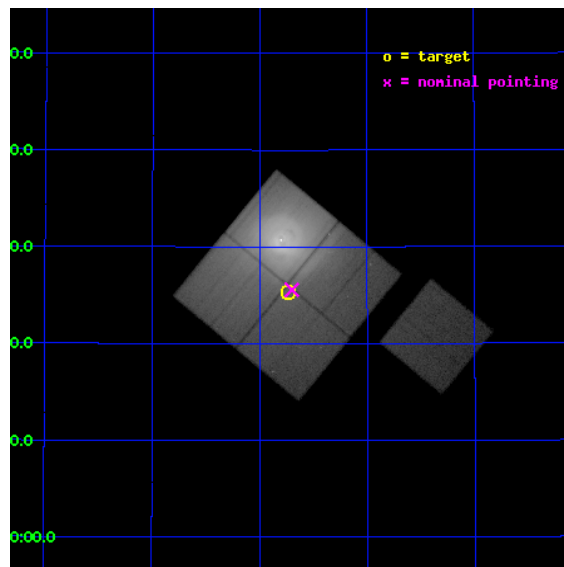
L2 Processing Date : Jun 15 2012

Contents

1	Front	2
2	OBI	3
2.1	OBI	3
2.1.1	Images	3
2.1.2	Bias	3
2.1.3	Parameters	4
2.1.4	Events	4
2.2	Compared Parameters	5
2.3	Aspect	6
2.4	Star Slots	9
2.4.1	Slot 3	9
2.4.2	Slot 4	10
2.4.3	Slot 5	11
2.4.4	Slot 6	12
2.4.5	Slot 7	13
2.5	FID Slots	14
2.5.1	Slot 0	14
2.5.2	Slot 1	15
2.5.3	Slot 2	16
A	Summary	17
A.1	Status	17
A.2	Comments	17

1 Front

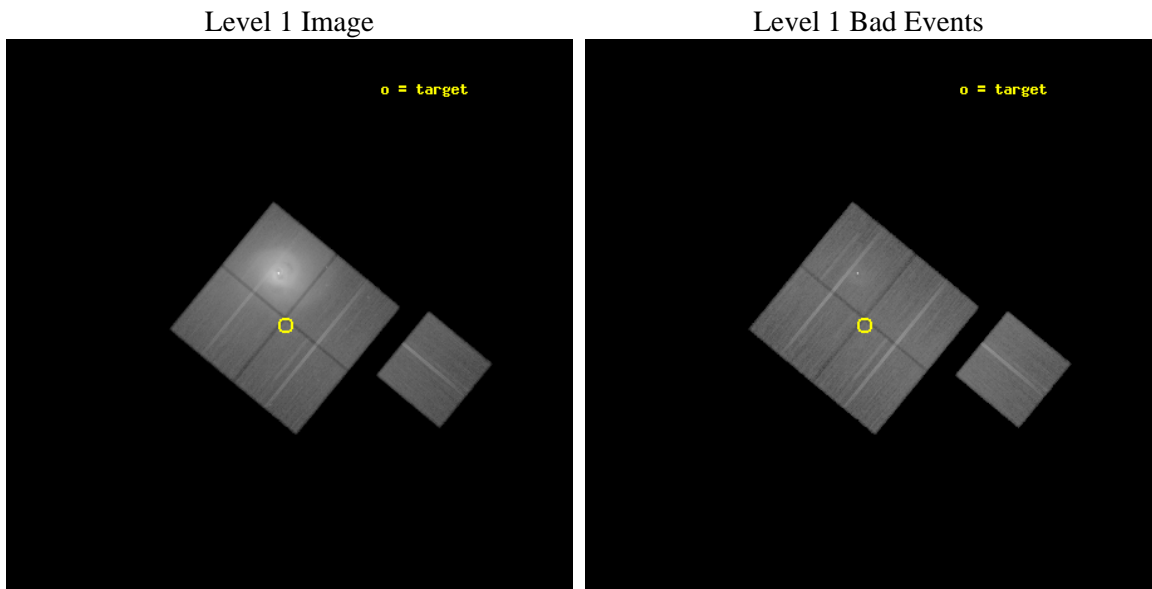
seq_num	800856	Sequence number
obs_id	11716	Observation id
title	Extending the Deep Image of the Perseus Cluster: The Outer Bubbles, Filaments and Ripples	Proposal title
observer	Professor Andrew Fabian	Principal investigator
object	Perseus cluster, Abell 426	Source name
dtcycle	0	
cycle	P	events from which exps? Prim/Second/Both
ra_targ	49.934167	Observer's specified target RA [deg]
dec_targ	41.421667	Observer's specified target Dec [deg]
ra_nom	49.925136499765	Nominal RA [deg]
dec_nom	41.426099230666	Nominal Dec [deg]
roll_nom	129.5094586064	Nominal Roll [deg]
revision	2	Processing version of data
ontime	40166.659288704	Sum of GTIs [s]
liveltime	39641.852314833	Livetime [s]
ontime0	40169.800308943	Sum of GTIs [s]
ontime1	40169.800308943	Sum of GTIs [s]
ontime2	40169.800308943	Sum of GTIs [s]
ontime3	40166.659288704	Sum of GTIs [s]
ontime6	40169.800308943	Sum of GTIs [s]
l2events	2559762	Number of level 2 events



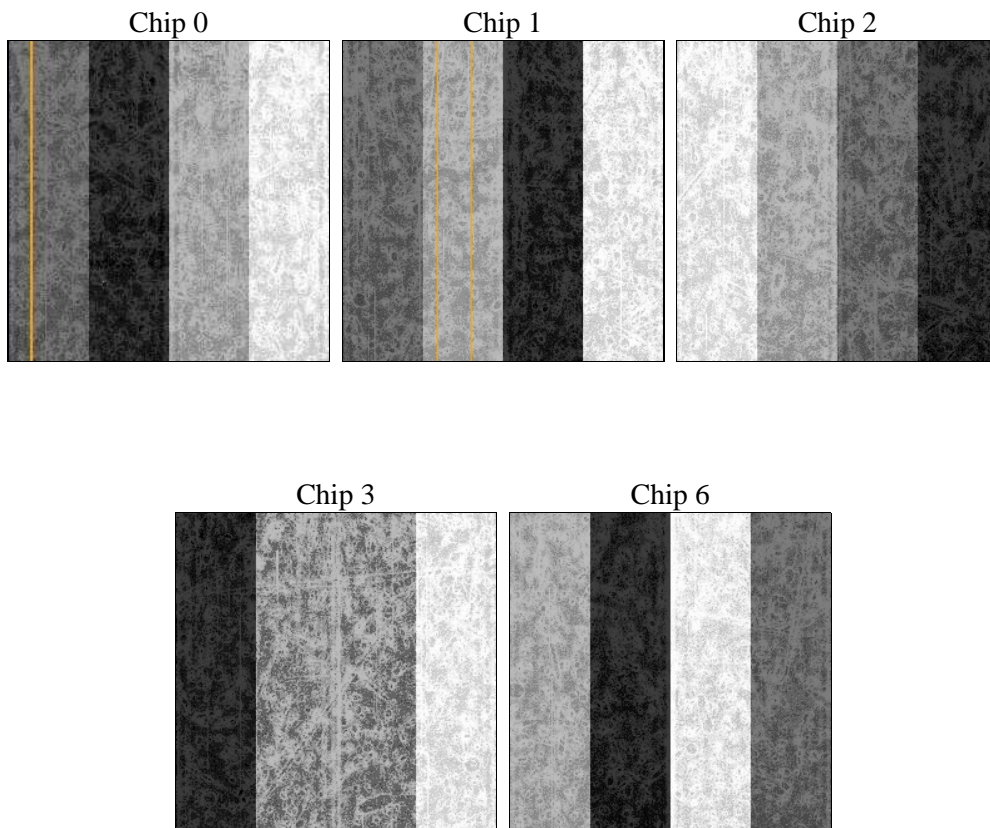
2 OBI

2.1 OBI

2.1.1 Images



2.1.2 Bias



2.1.3 Parameters

obi_num	0	Obi number	sched_exp_time	40000.000000	[s] Scheduled observation exposure time
ascdsver	8.4.5	Processing system revision	ontime	40166.659288704	Sum of GTIs [s]
caldbver	4.4.10	 	ontime0	40169.800308943	Sum of GTIs [s]
date	2012-06-15T14:45:44	Date and time of file creation	ontime1	40169.800308943	Sum of GTIs [s]
revision	2	Processing version of data	ontime2	40169.800308943	Sum of GTIs [s]
			ontime3	40166.659288704	Sum of GTIs [s]
			ontime6	40169.800308943	Sum of GTIs [s]
			l1events	4423903	Number of level 1 events

2.1.4 Events

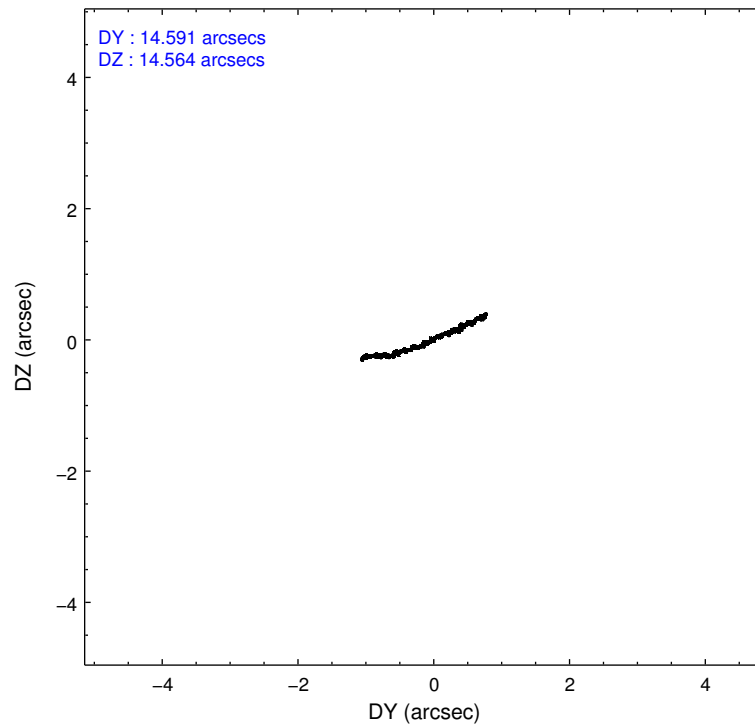
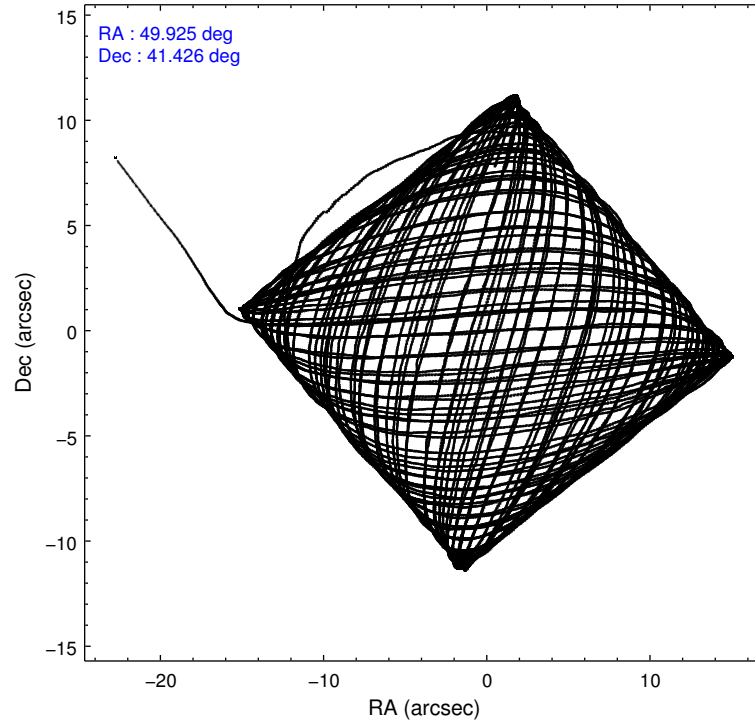
	ccd 0	ccd 1	ccd 2	ccd 3	ccd 6
level 1 events	2266152	655108	623268	479959	399416
rejected events	370284	307989	350038	327479	327150
rejected %	16%	47%	56%	68%	81%

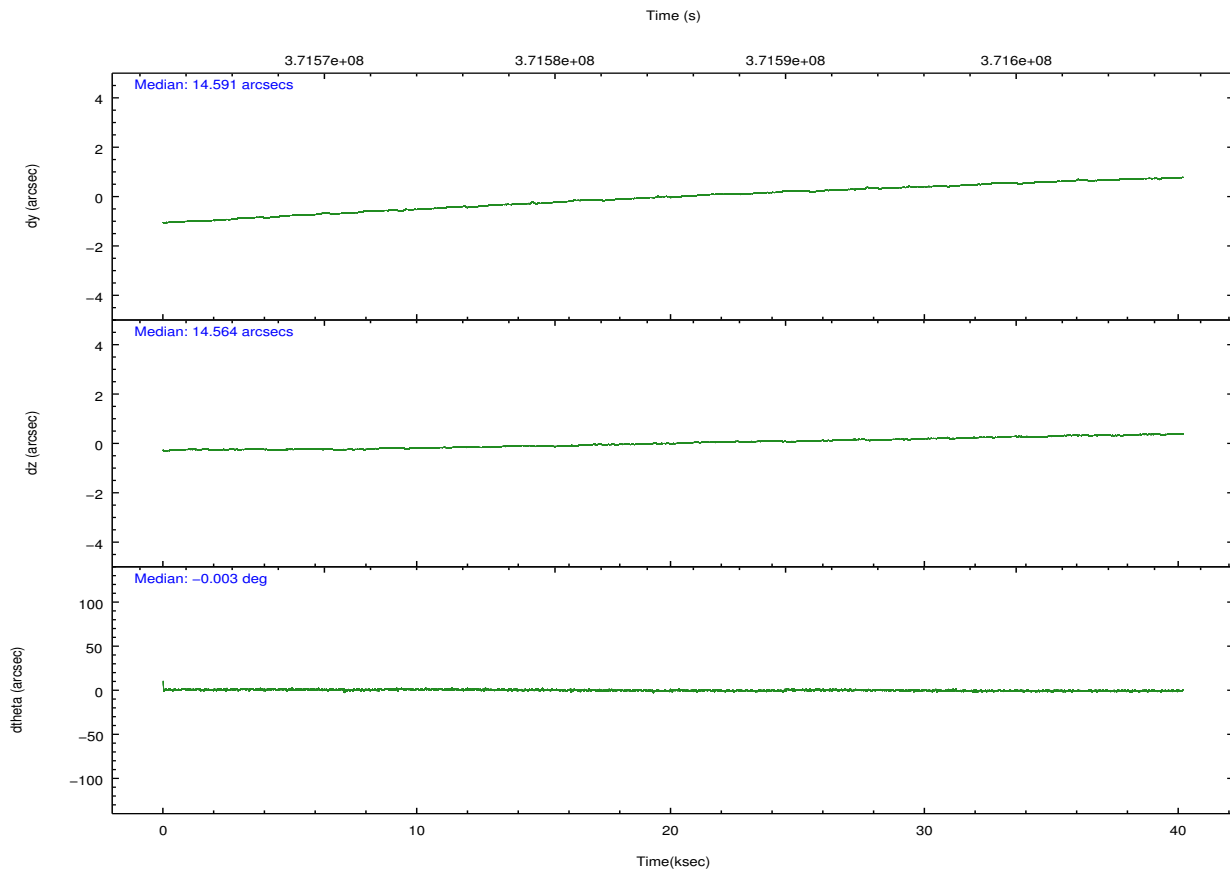
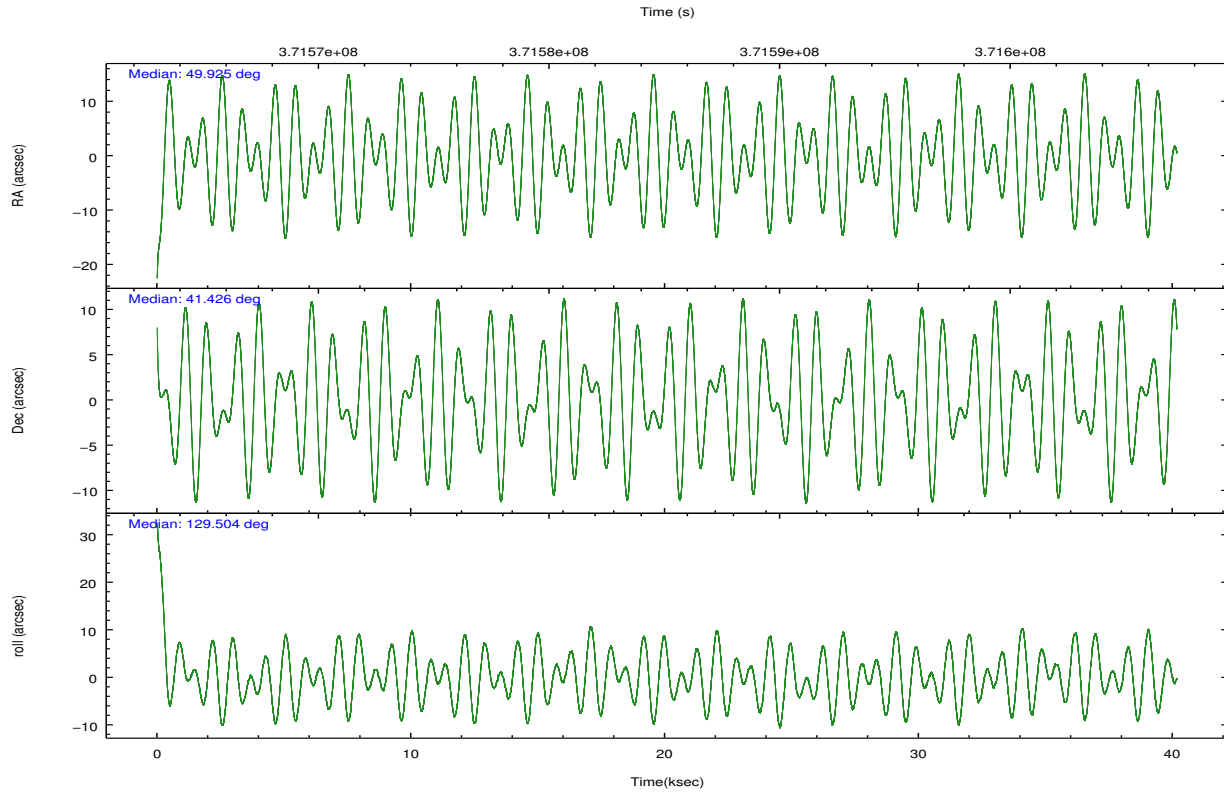
	ccd 0	ccd 1	ccd 2	ccd 3	ccd 6
grade 0 events	1517883	259865	203613	106908	41587
	66%	39%	32%	22%	10%
grade 1 events	14315	1615	1550	883	343
	0%	0%	0%	0%	0%
grade 2 events	202171	43015	33669	20093	12045
	8%	6%	5%	4%	3%
grade 3 events	63343	14167	11628	7790	5116
	2%	2%	1%	1%	1%
grade 4 events	63528	14160	11699	7919	5043
	2%	2%	1%	1%	1%
grade 5 events	24011	15705	13547	15786	14919
	1%	2%	2%	3%	3%
grade 6 events	56904	17537	13932	10666	9029
	2%	2%	2%	2%	2%
grade 7 events	323997	289044	333630	309914	311334
	14%	44%	53%	64%	77%

2.2 Compared Parameters

Parameter	Planned	Actual	Parameter	Planned	Actual
Instrument	ACIS	ACIS	Obspar format version number	7	7
Detector	ACIS-01236	ACIS-01236	Obspar file type	PREDICTED	ACTUAL
Grating	NONE	NONE	Obspar update status	NONE	UPDATED
Data mode	FAINT	FAINT	Number of optional ACIS chips dropped	0	0
Observation mode	POINTING	POINTING	On-chip summing requested	N	N
[deg] Pointing RA	49.959553	49.92513649976542	Subarray requested	NONE	NONE
[deg] Pointing Dec	41.416571	41.42609923066596	Alternating exposures requested	N	N
[deg] Pointing Roll	129.278004	129.509458606402	[s] Primary exposure time	0.000000	3.1
[mm] SIM focus pos	-0.782348	-0.7809083437167272			
[mm] SIM defocus	0	0.001439871863259334			
[mm] SIM translation stage pos	-233.592463	-233.5874344608287			
[mm] SIM translation stage offset	0	-0.005018542100998502			
[s] Observation start time (MET)	371565210.184000	371564017.13977			
Observation start date	2009-10-10T12:32:24	2009-10-10T12:13:37			
[s] Observation end time (MET)	371605210.184000	371606097.49189			
Observation end date	2009-10-10T23:39:04	2009-10-10T23:54:57			
Read mode	TIMED	TIMED			

2.3 Aspect



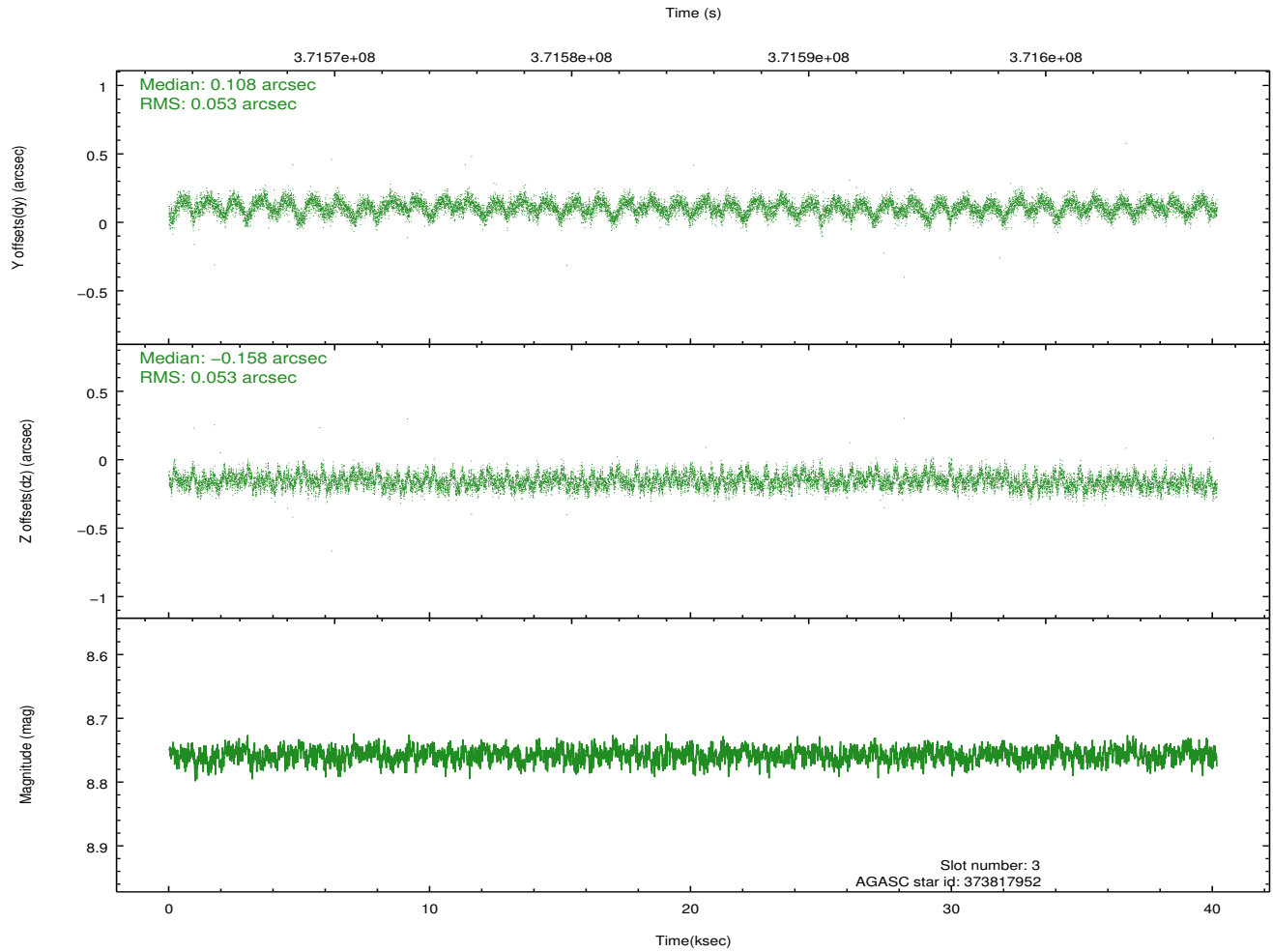
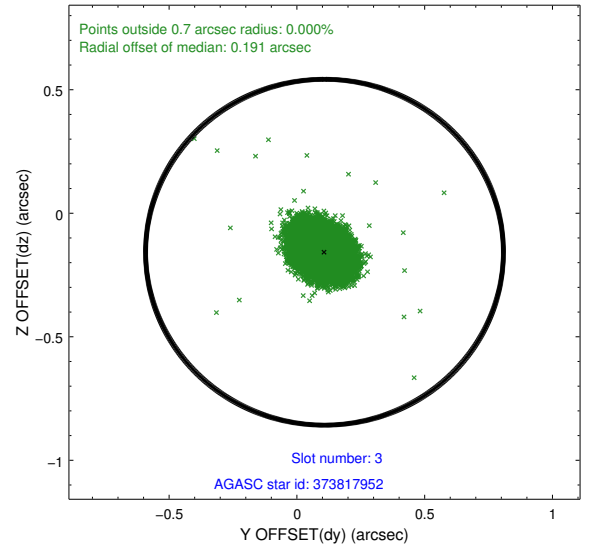
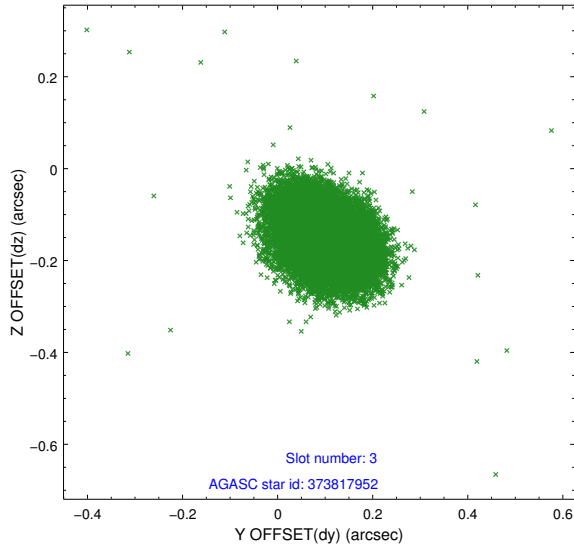


Slot Statistics

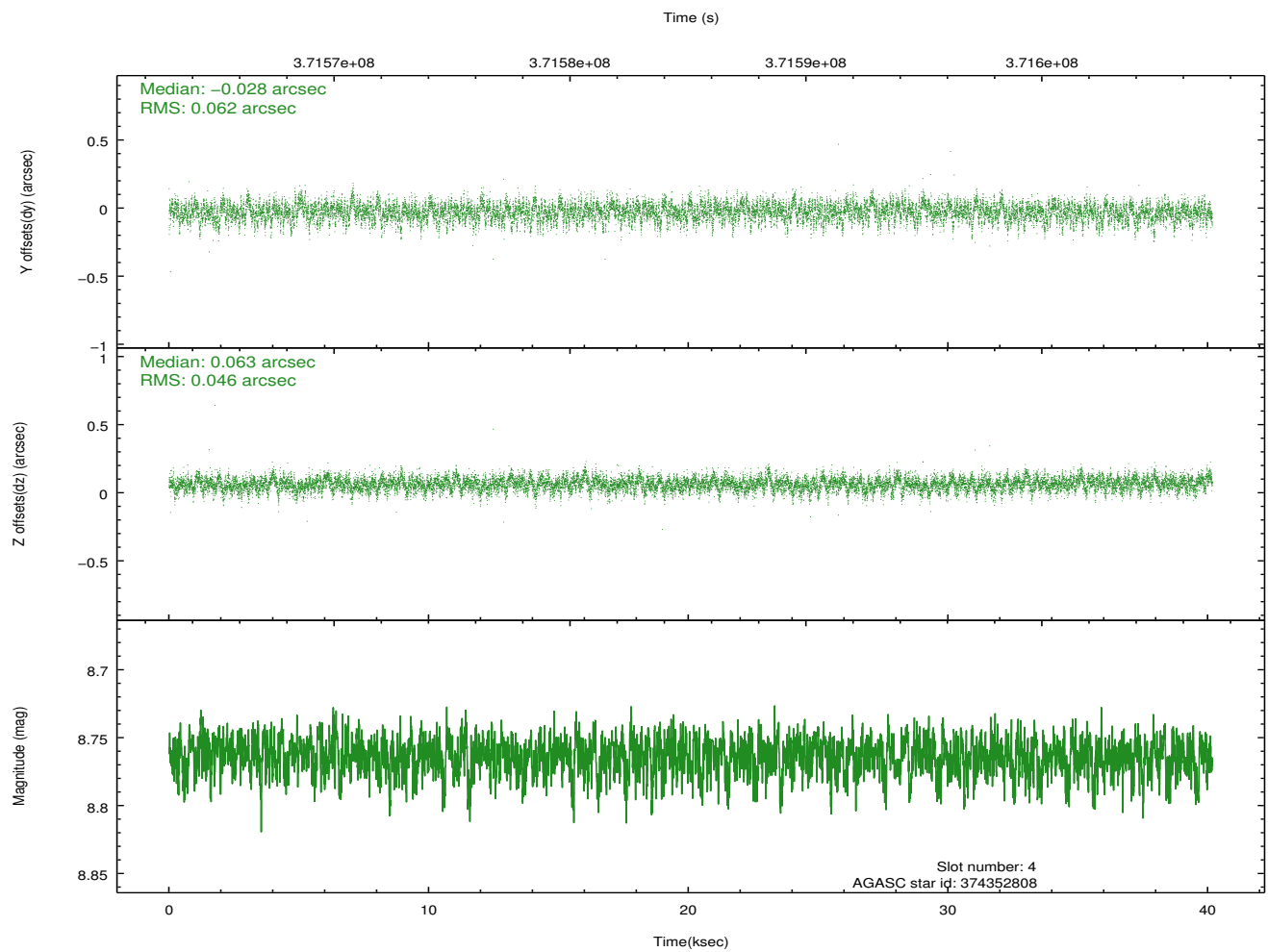
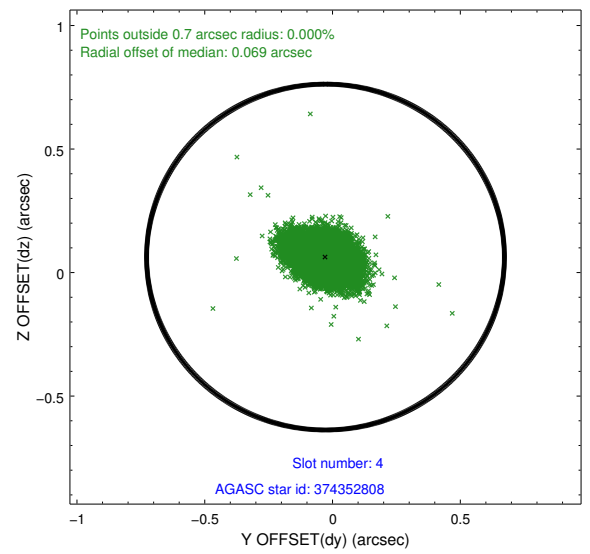
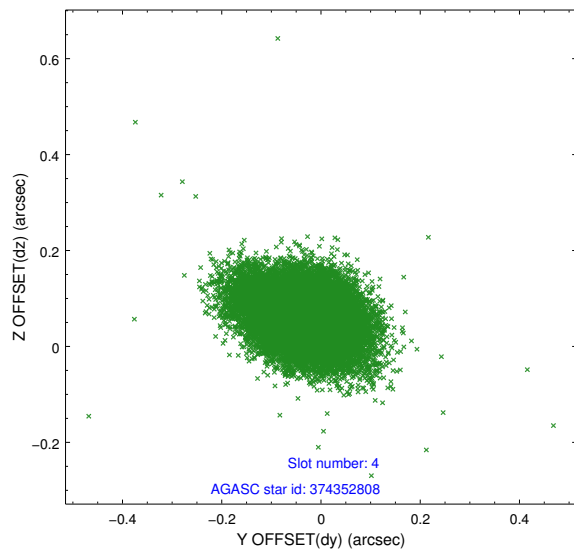
slot	status	id	mag	n_pts	med_dy	med_dz	dr1	dr2	ra	dec	mean_y	mean_z
0	FID	ACIS-I-2	6.94	9798	-0.081	-0.069	0.018	0.028	0.000000	0.000000	-769.30	-844.61
1	FID	ACIS-I-4	6.95	9798	0.199	0.068	0.033	0.044	0.000000	0.000000	2145.00	1061.73
2	FID	ACIS-I-5	7.02	9798	-0.217	0.070	0.024	0.034	0.000000	0.000000	-1823.27	1059.54
3	GUIDE	373817952	8.76	19587	0.108	-0.158	0.078	0.128	49.913424	40.978510	-1141.10	1095.36
4	GUIDE	374352808	8.76	19580	-0.028	0.063	0.080	0.137	49.969955	42.208621	2190.06	-1826.17
5	GUIDE	374357808	8.67	19591	-0.127	0.024	0.086	0.141	49.921429	42.176083	2181.37	-1652.09
6	GUIDE	376070040	8.41	19589	-0.072	0.029	0.090	0.139	50.072031	41.897206	1149.13	-1328.60
7	GUIDE	375534552	8.20	19591	0.125	0.051	0.072	0.114	50.877490	41.206927	-2147.54	-1455.01

2.4 Star Slots

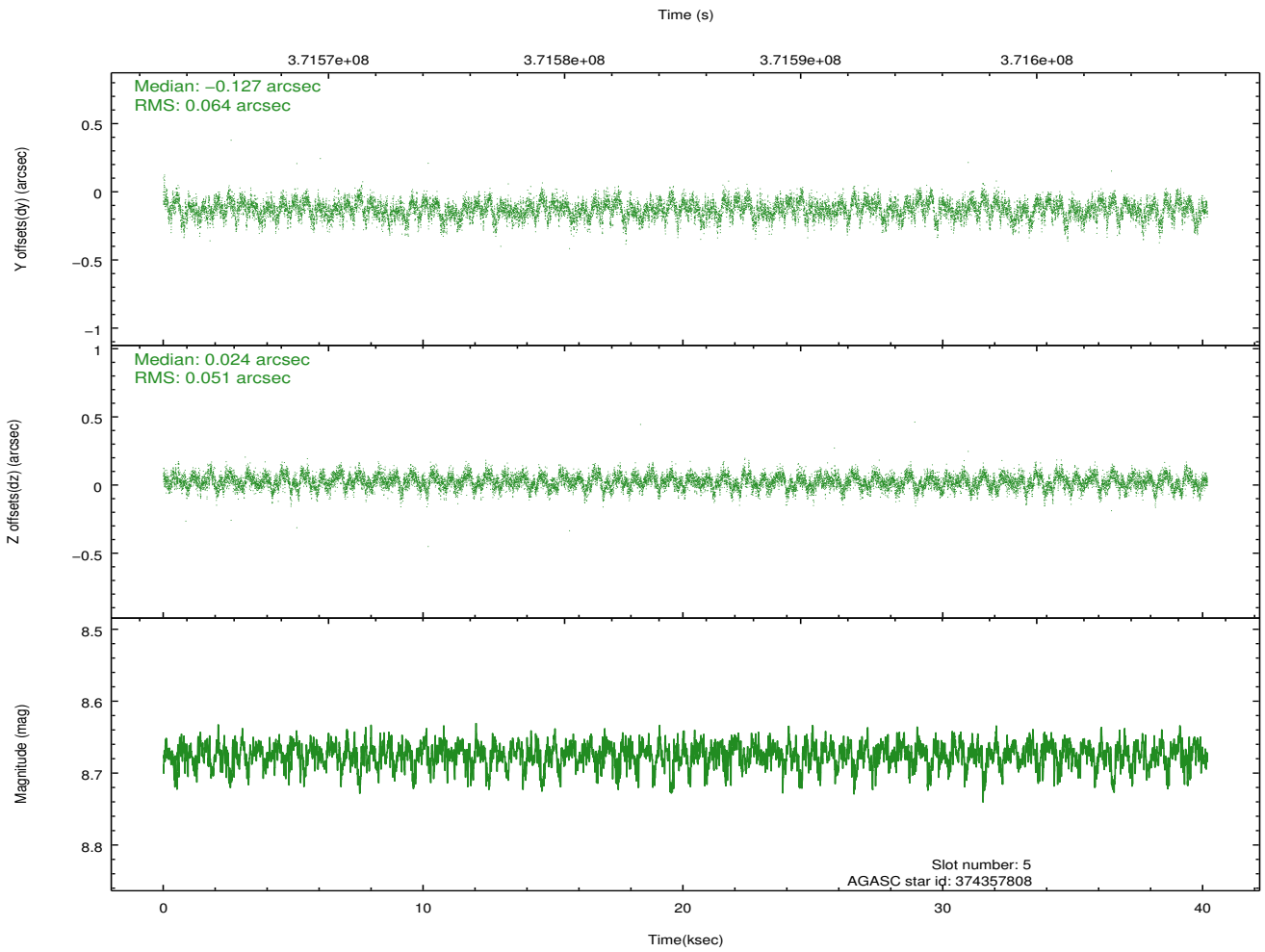
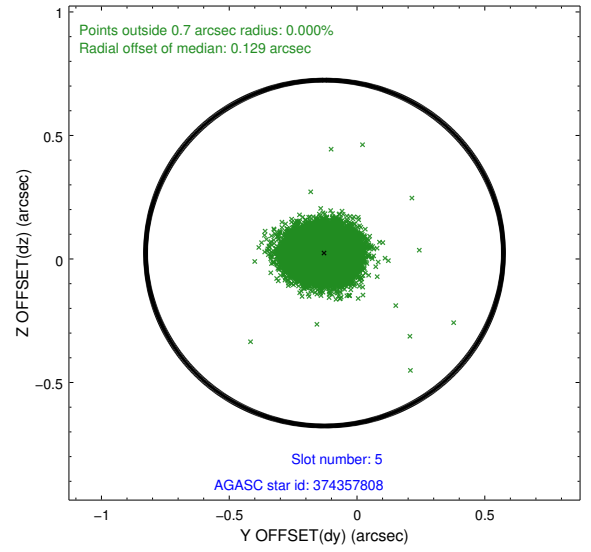
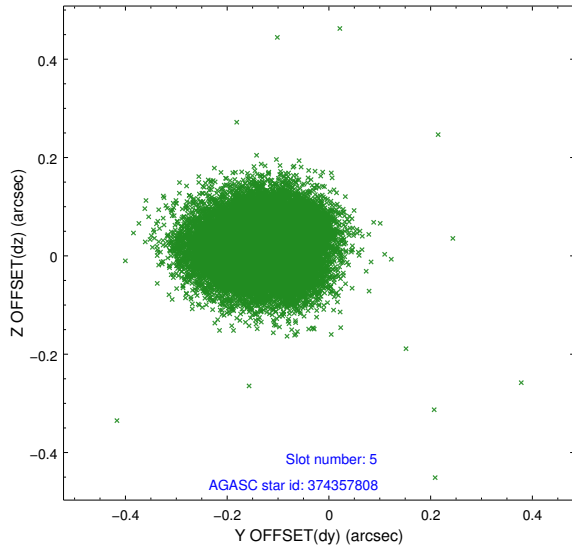
2.4.1 Slot 3



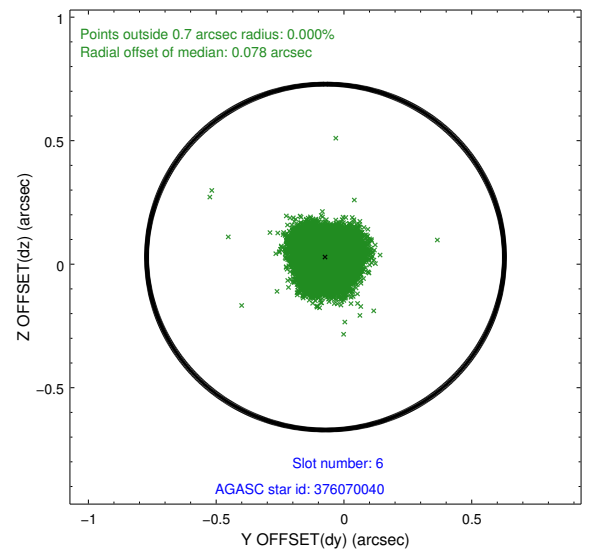
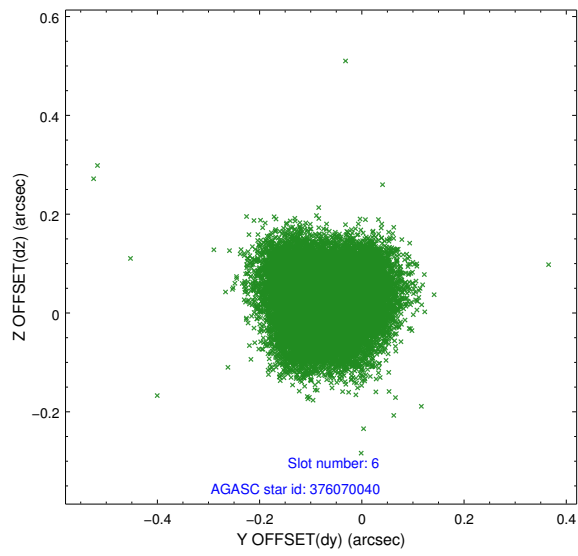
2.4.2 Slot 4



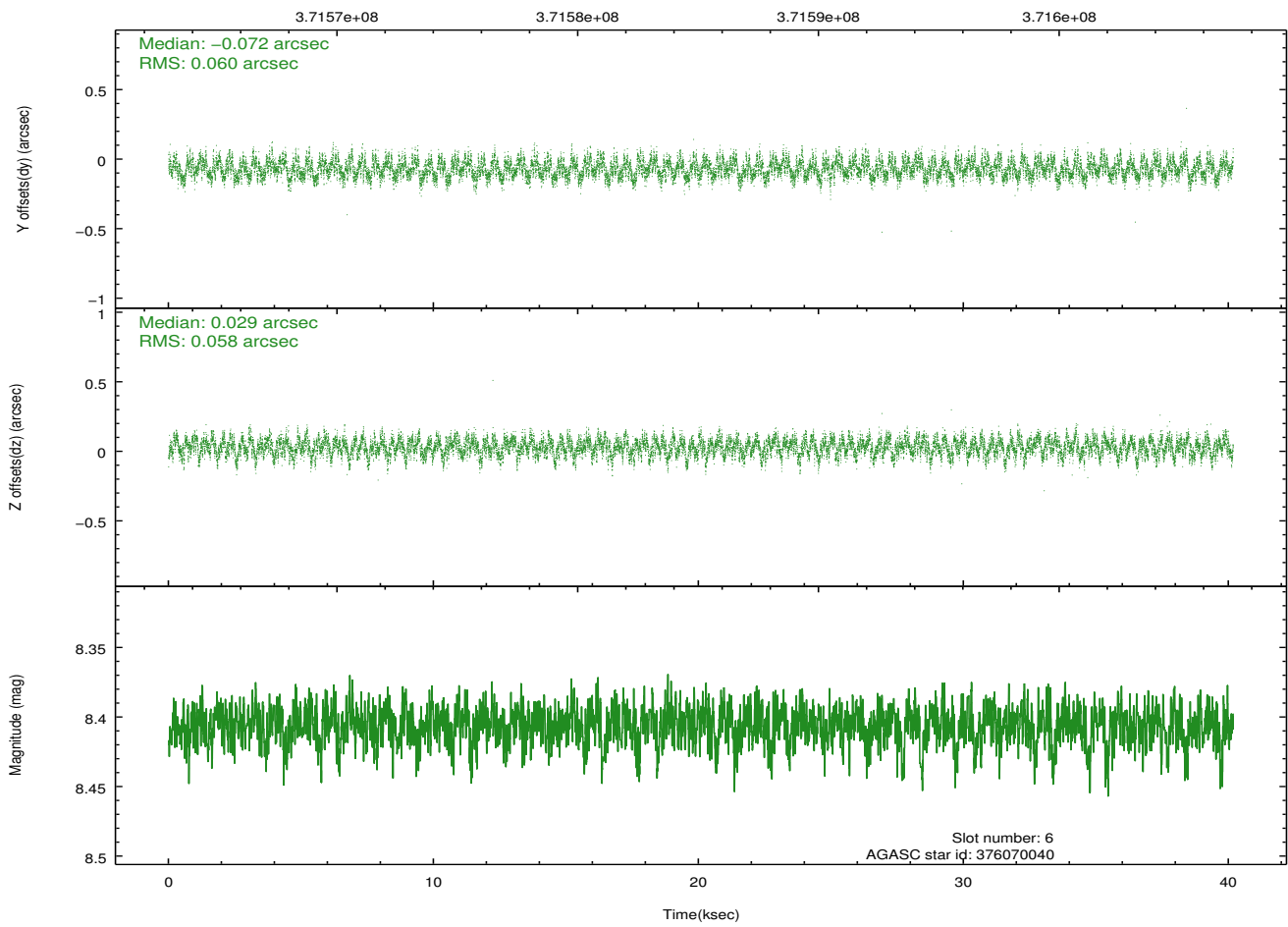
2.4.3 Slot 5



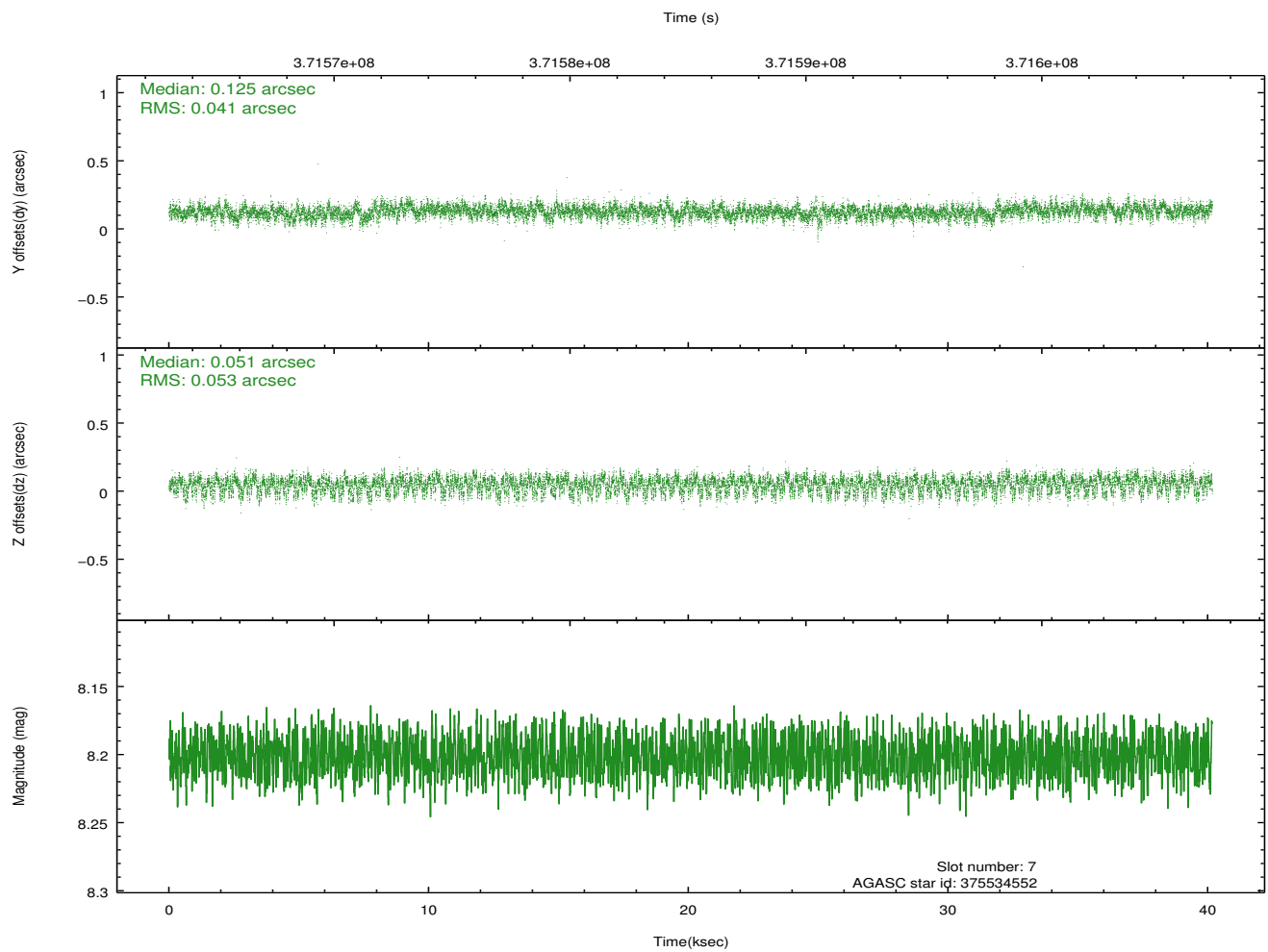
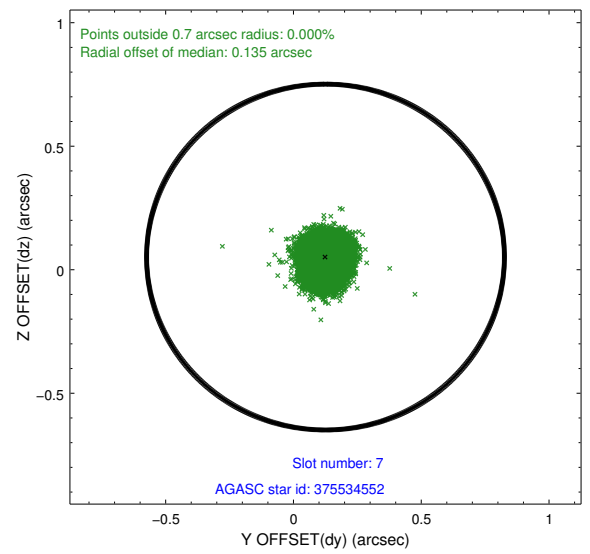
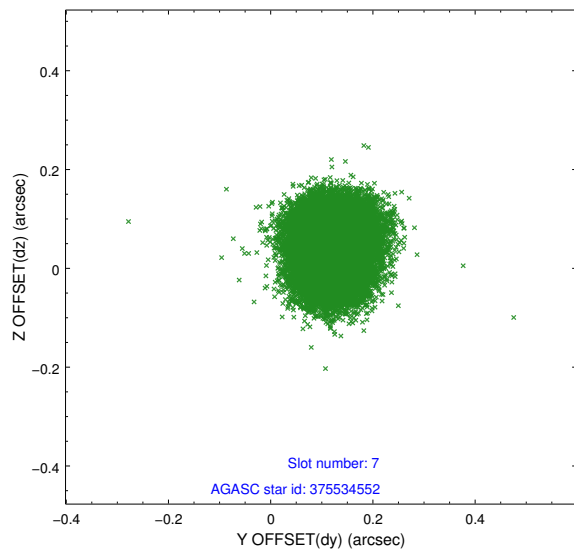
2.4.4 Slot 6



Time (s)

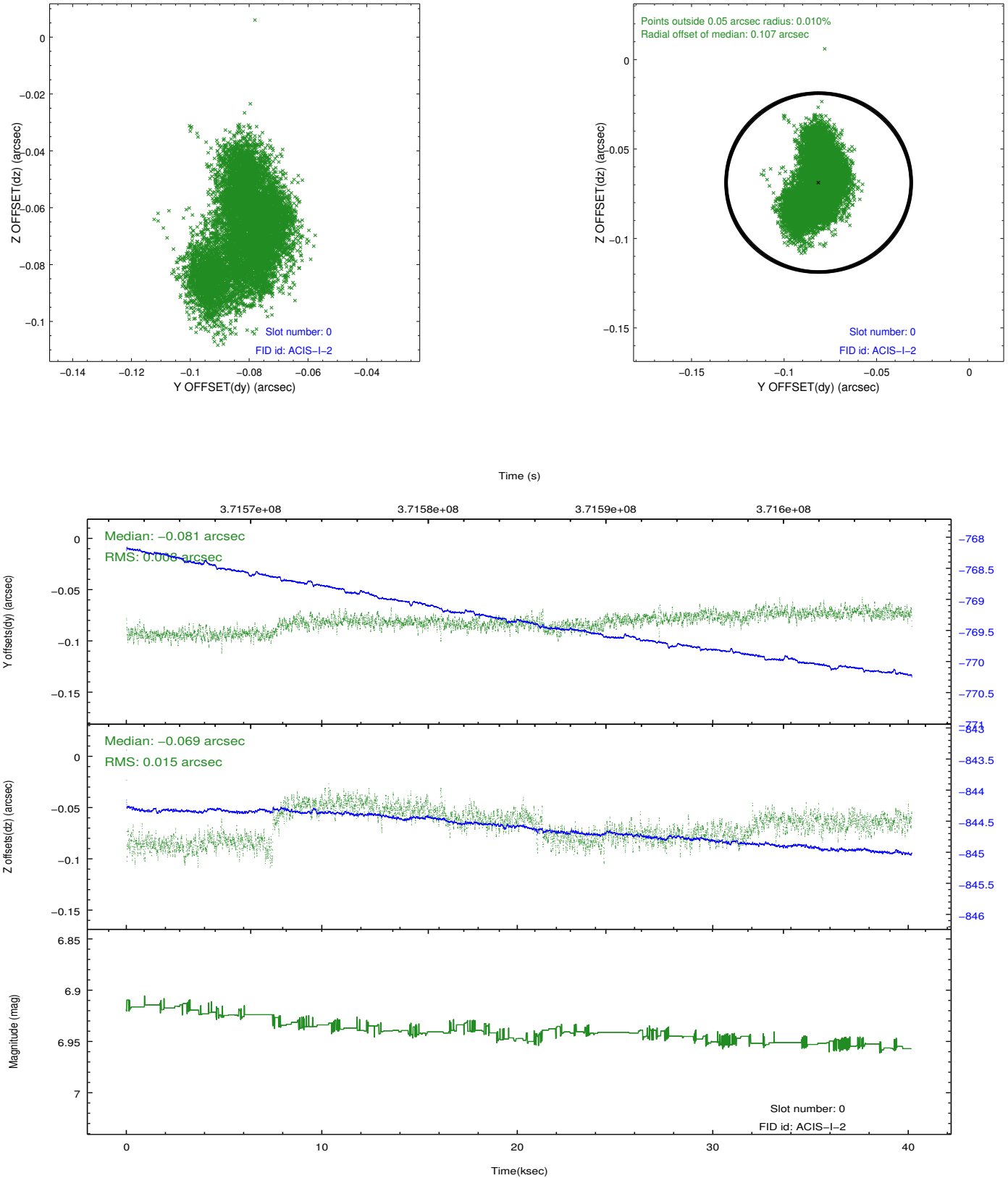


2.4.5 Slot 7

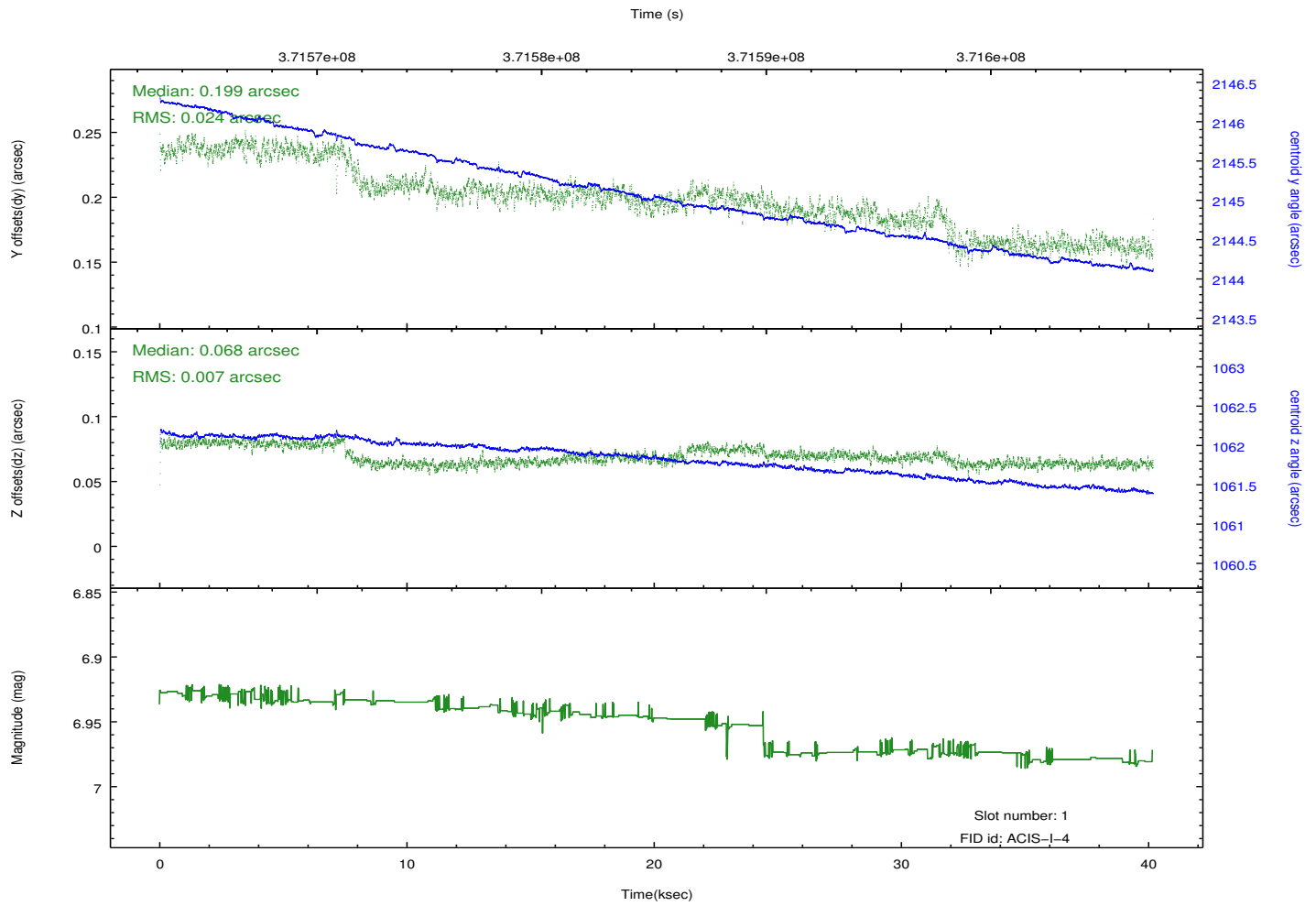
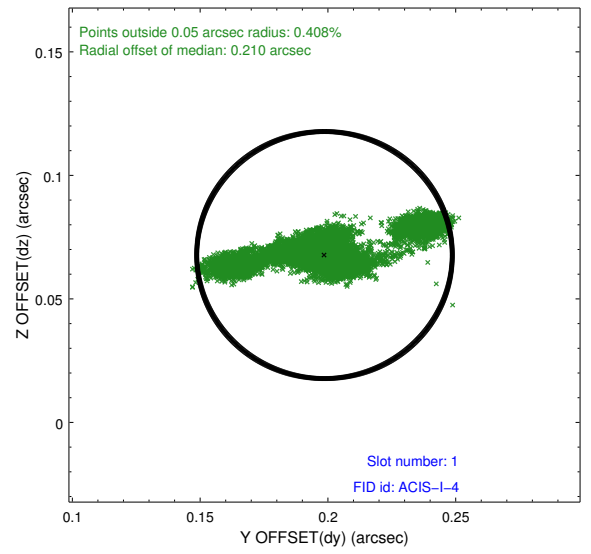
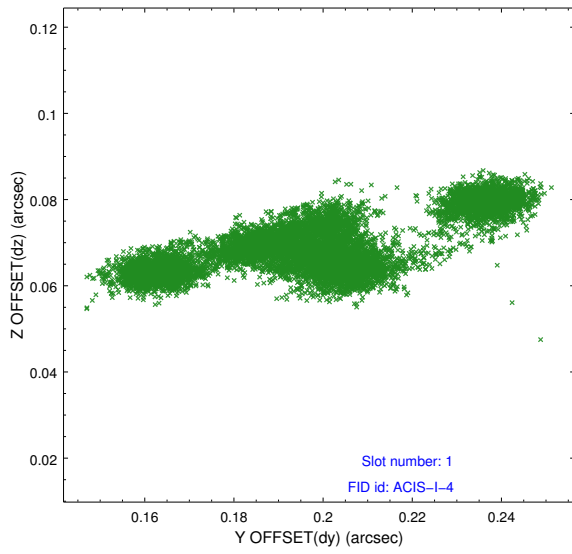


2.5 FID Slots

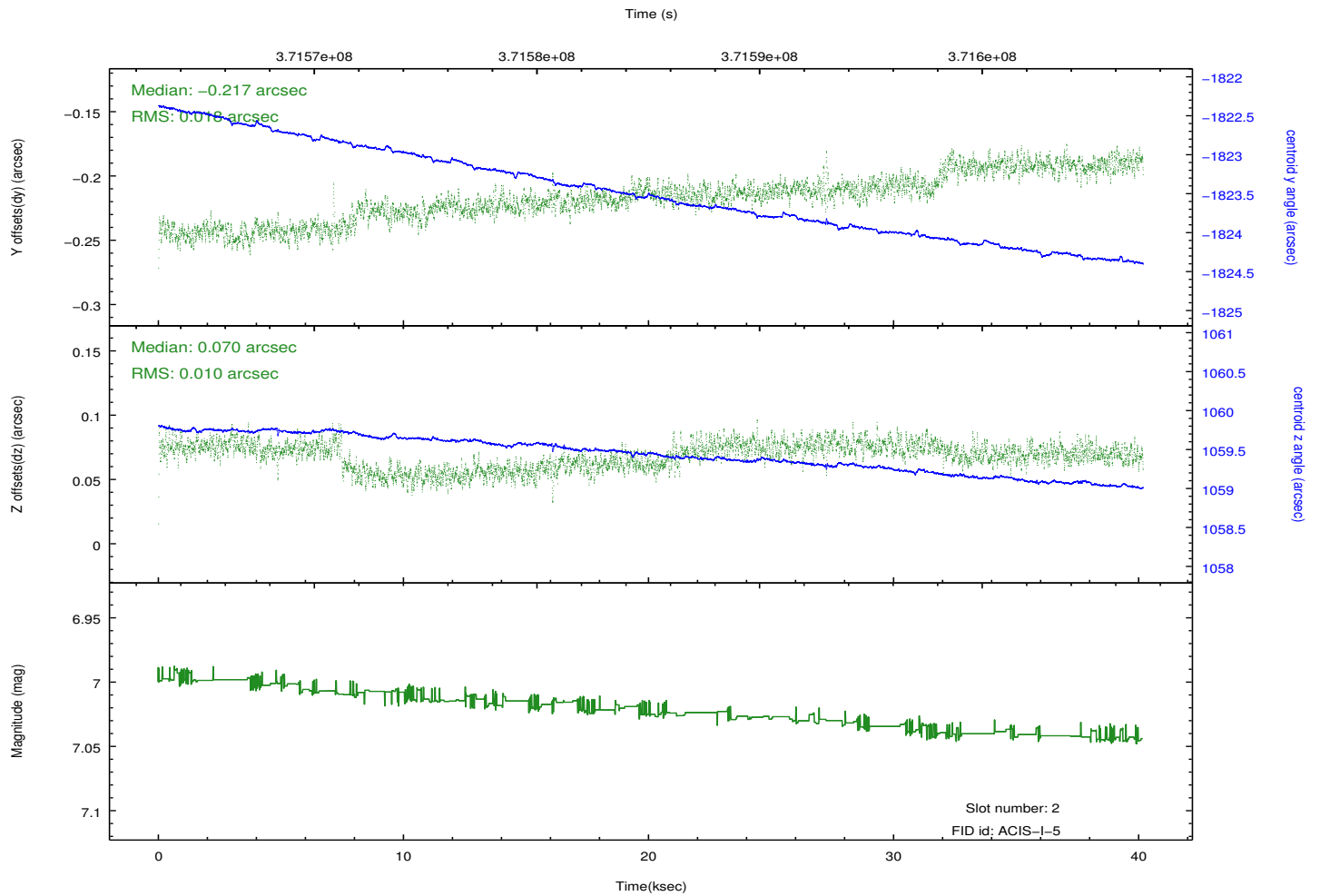
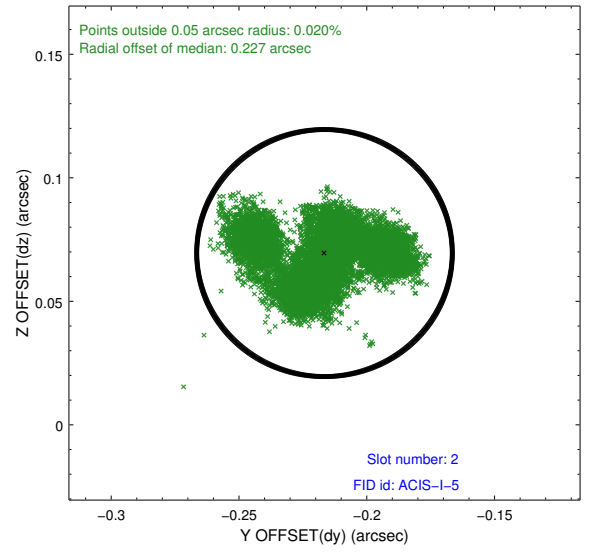
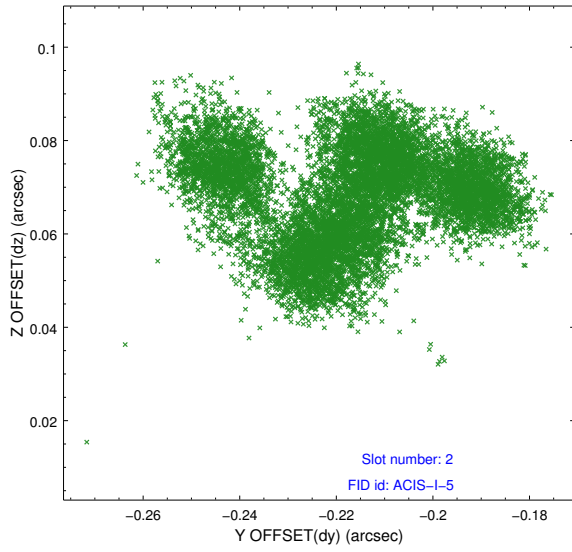
2.5.1 Slot 0



2.5.2 Slot 1



2.5.3 Slot 2



A Summary

A.1 Status

V&V Scientist	Jen Lauer
V&V Date (YYYY-MM-DD)	2012.06.20
V&V Edition	1
V&V Disposition and Status	OK
V&V Charge Time	40.166659288704

A.2 Comments