

# V&V Reference Report

## L2 ASCDS Version : 8.4.5

Observation 11726 - L2 Version 2  
Chandra X-Ray Center

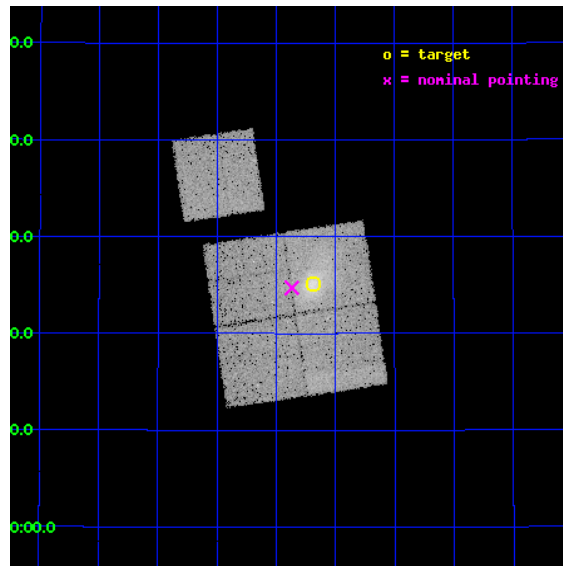
L2 Processing Date : Jun 16 2012

## Contents

<b>1</b>	<b>Front</b>	<b>2</b>
<b>2</b>	<b>OBI</b>	<b>3</b>
2.1	OBI . . . . .	3
2.1.1	Images . . . . .	3
2.1.2	Bias . . . . .	3
2.1.3	Parameters . . . . .	4
2.1.4	Events . . . . .	4
2.2	Compared Parameters . . . . .	5
2.3	Aspect . . . . .	6
2.4	Star Slots . . . . .	9
2.4.1	Slot 3 . . . . .	9
2.4.2	Slot 4 . . . . .	10
2.4.3	Slot 5 . . . . .	11
2.4.4	Slot 6 . . . . .	12
2.4.5	Slot 7 . . . . .	13
2.5	FID Slots . . . . .	14
2.5.1	Slot 0 . . . . .	14
2.5.2	Slot 1 . . . . .	15
2.5.3	Slot 2 . . . . .	16
<b>A</b>	<b>Summary</b>	<b>17</b>
A.1	Status . . . . .	17
A.2	Comments . . . . .	17

# 1 Front

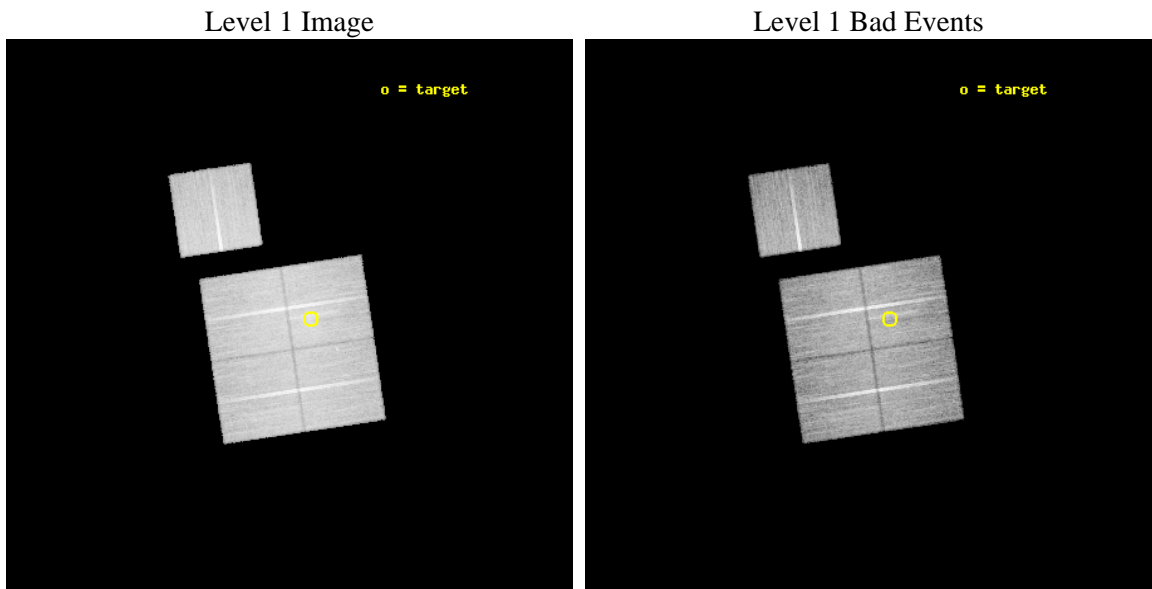
seq_num	800866	Sequence number
obs_id	11726	Observation id
title	Cosmology with a complete sample of 0.15	Proposal title
observer	Prof. Massimiliano Bonamente	Principal investigator
object	Abell 2111	Source name
dtcycle	0	&#160
cycle	P	events from which exps? Prim/Second/Both
ra_targ	234.922083	Observer's specified target RA [deg]
dec_targ	34.419444	Observer's specified target Dec [deg]
ra_nom	234.96694225767	Nominal RA [deg]
dec_nom	34.41201584957	Nominal Dec [deg]
roll_nom	351.48956313137	Nominal Roll [deg]
revision	2	Processing version of data
ontime	21176.059232473	Sum of GTIs [s]
livetime	20899.378429013	Livetime [s]
ontime0	21176.059202492	Sum of GTIs [s]
ontime1	21176.059172571	Sum of GTIs [s]
ontime2	21176.059192538	Sum of GTIs [s]
ontime3	21176.059232473	Sum of GTIs [s]
ontime6	21179.200162888	Sum of GTIs [s]
l2events	90837	Number of level 2 events



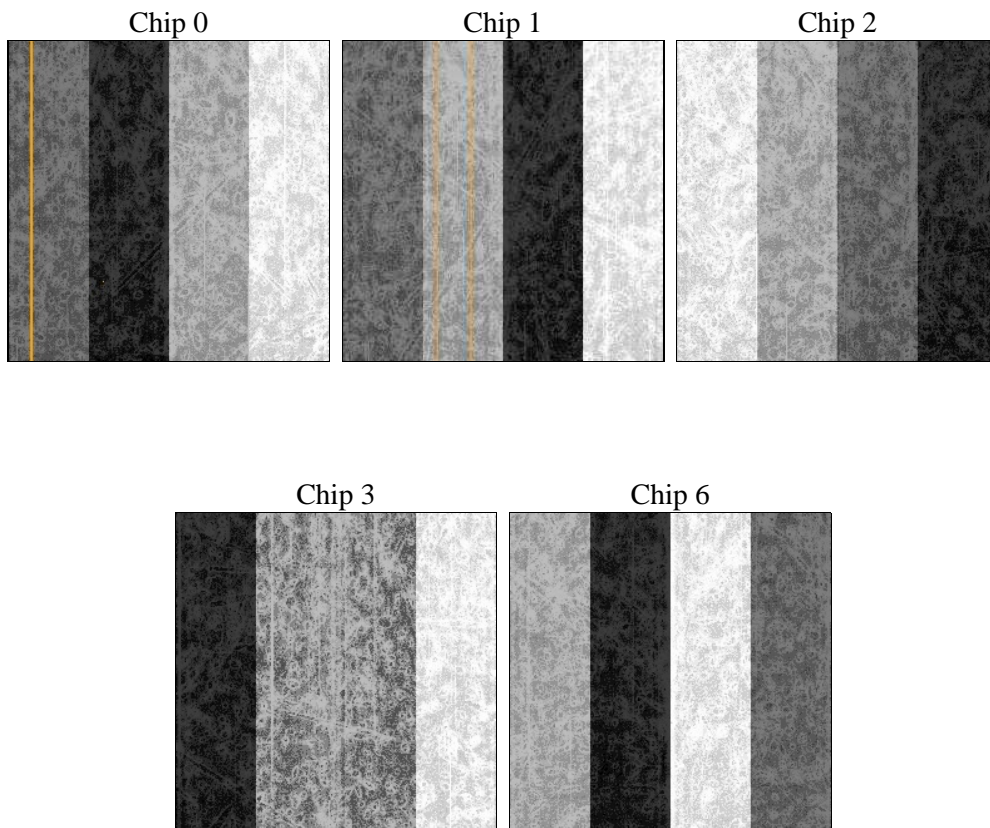
## 2 OBI

### 2.1 OBI

#### 2.1.1 Images



#### 2.1.2 Bias



### 2.1.3 Parameters

obi_num	0	Obi number	sched_exp_time	21000.000000	[s] Scheduled observation exposure time
ascdsver	8.4.5	Processing system revision	ontime	21176.059232473	Sum of GTIs [s]
caldbver	4.4.10	&#160	ontime0	21176.059202492	Sum of GTIs [s]
date	2012-06-16T15:27:46	Date and time of file creation	ontime1	21176.059172571	Sum of GTIs [s]
revision	2	Processing version of data	ontime2	21176.059192538	Sum of GTIs [s]
			ontime3	21176.059232473	Sum of GTIs [s]
			ontime6	21179.200162888	Sum of GTIs [s]
			l1events	936227	Number of level 1 events

### 2.1.4 Events

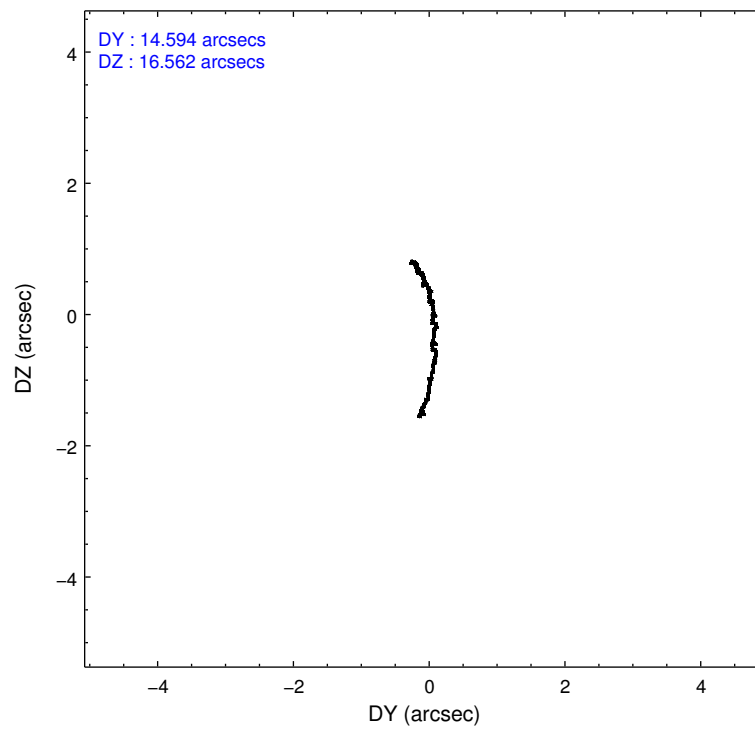
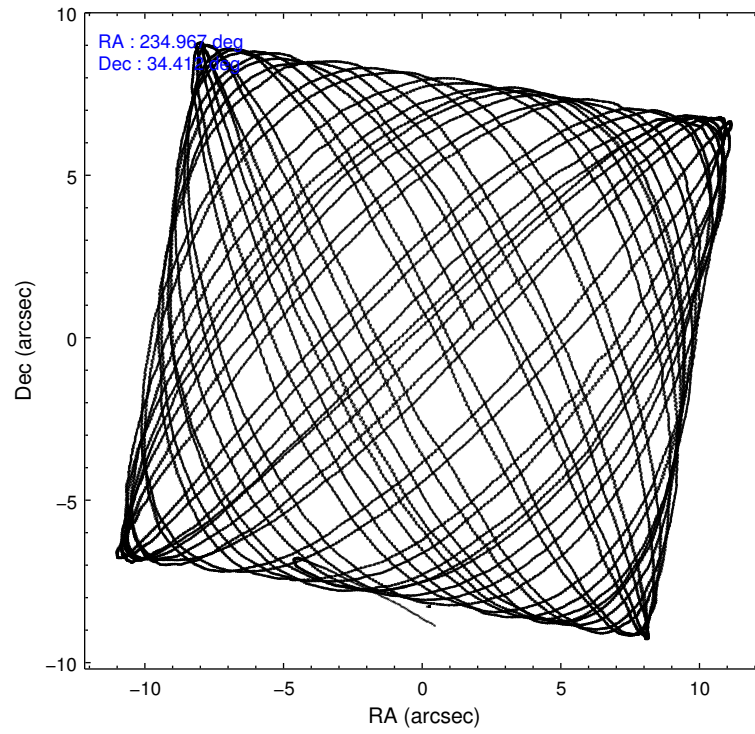
	ccd 0	ccd 1	ccd 2	ccd 3	ccd 6
level 1 events	176984	176477	196277	198430	188059
rejected events	157732	154321	177285	170344	168910
rejected %	89%	87%	90%	85%	89%

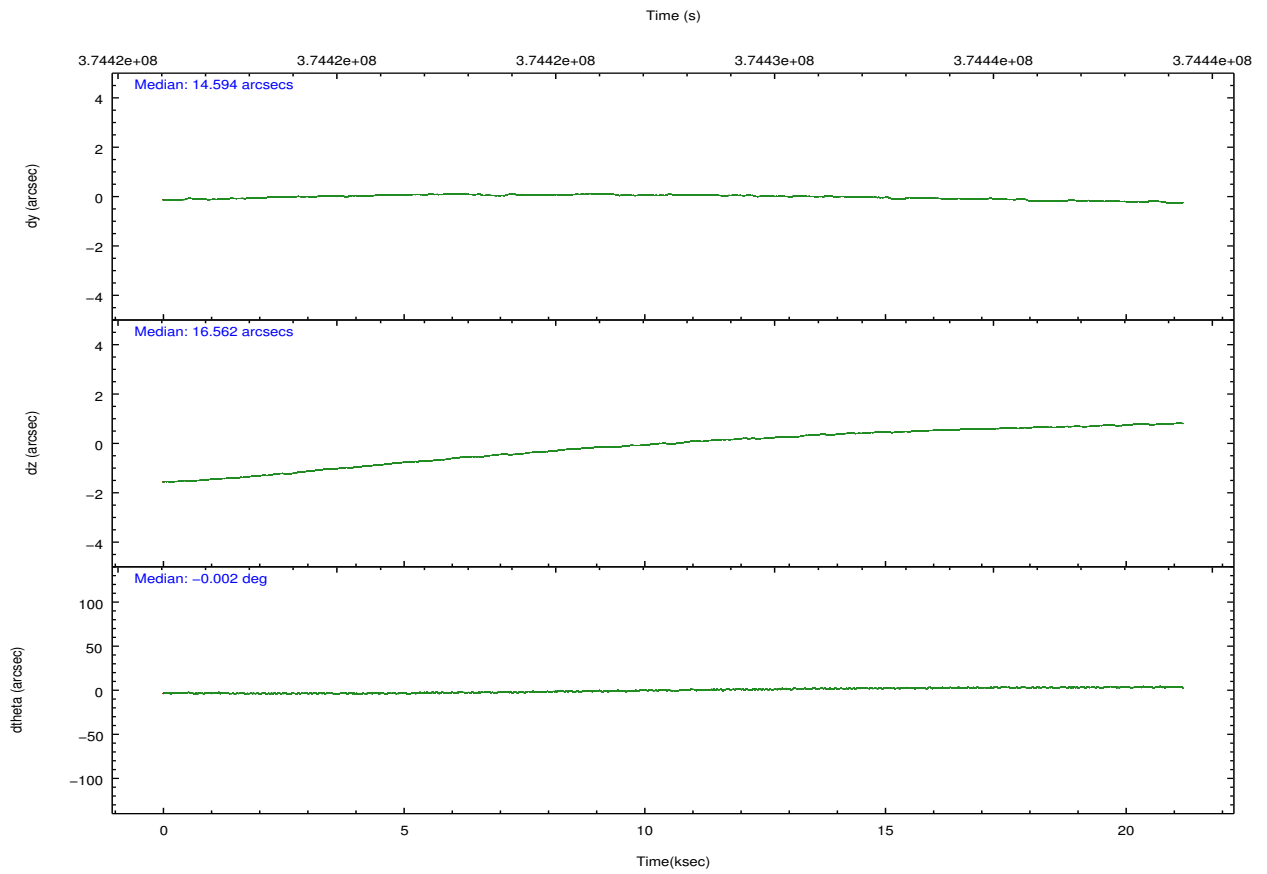
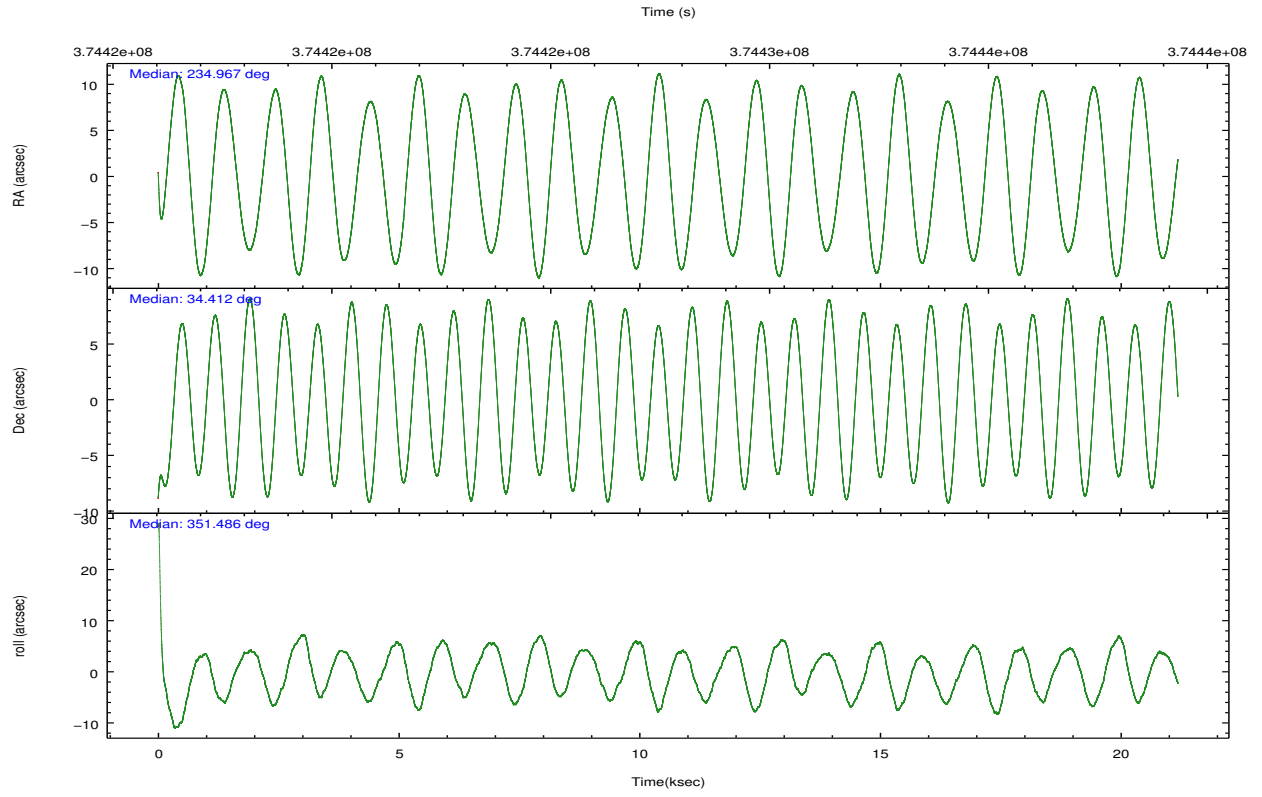
	ccd 0	ccd 1	ccd 2	ccd 3	ccd 6
grade 0 events	7009	8375	7132	14635	6710
	3%	4%	3%	7%	3%
grade 1 events	93	106	130	186	101
	0%	0%	0%	0%	0%
grade 2 events	4720	5116	4699	5040	4356
	2%	2%	2%	2%	2%
grade 3 events	2112	2291	1982	2375	2043
	1%	1%	1%	1%	1%
grade 4 events	2000	2338	2053	2321	2090
	1%	1%	1%	1%	1%
grade 5 events	6791	7342	6615	7994	7529
	3%	4%	3%	4%	4%
grade 6 events	3713	4345	3444	4037	4285
	2%	2%	1%	2%	2%
grade 7 events	150546	146564	170222	161842	160945
	85%	83%	86%	81%	85%

## 2.2 Compared Parameters

Parameter	Planned	Actual	Parameter	Planned	Actual
Instrument	ACIS	ACIS	Obspar format version number	7	7
Detector	ACIS-01236	ACIS-01236	Obspar file type	PREDICTED	ACTUAL
Grating	NONE	NONE	Obspar update status	NONE	UPDATED
Data mode	VFAINT	VFAINT	Number of optional ACIS chips dropped	0	0
Observation mode	POINTING	POINTING	On-chip summing requested	N	N
[deg] Pointing RA	234.935982	234.9669422576677	Subarray requested	NONE	NONE
[deg] Pointing Dec	34.401835	34.41201584957035	Alternating exposures requested	N	N
[deg] Pointing Roll	351.298352	351.4895631313675	[s] Primary exposure time	0.000000	3.1
[mm] SIM focus pos	-0.782348	-0.7809083437167272			
[mm] SIM defocus	0	0.001439871863259334			
[mm] SIM translation stage pos	-227.592463	-227.5958210972112			
[mm] SIM translation stage offset	-6	-5.996631905718488			
[s] Observation start time (MET)	374417267.184000	374416101.82091			
Observation start date	2009-11-12T12:46:41	2009-11-12T12:28:21			
[s] Observation end time (MET)	374438267.184000	374439008.52206			
Observation end date	2009-11-12T18:36:41	2009-11-12T18:50:08			
Read mode	TIMED	TIMED			

## 2.3 Aspect



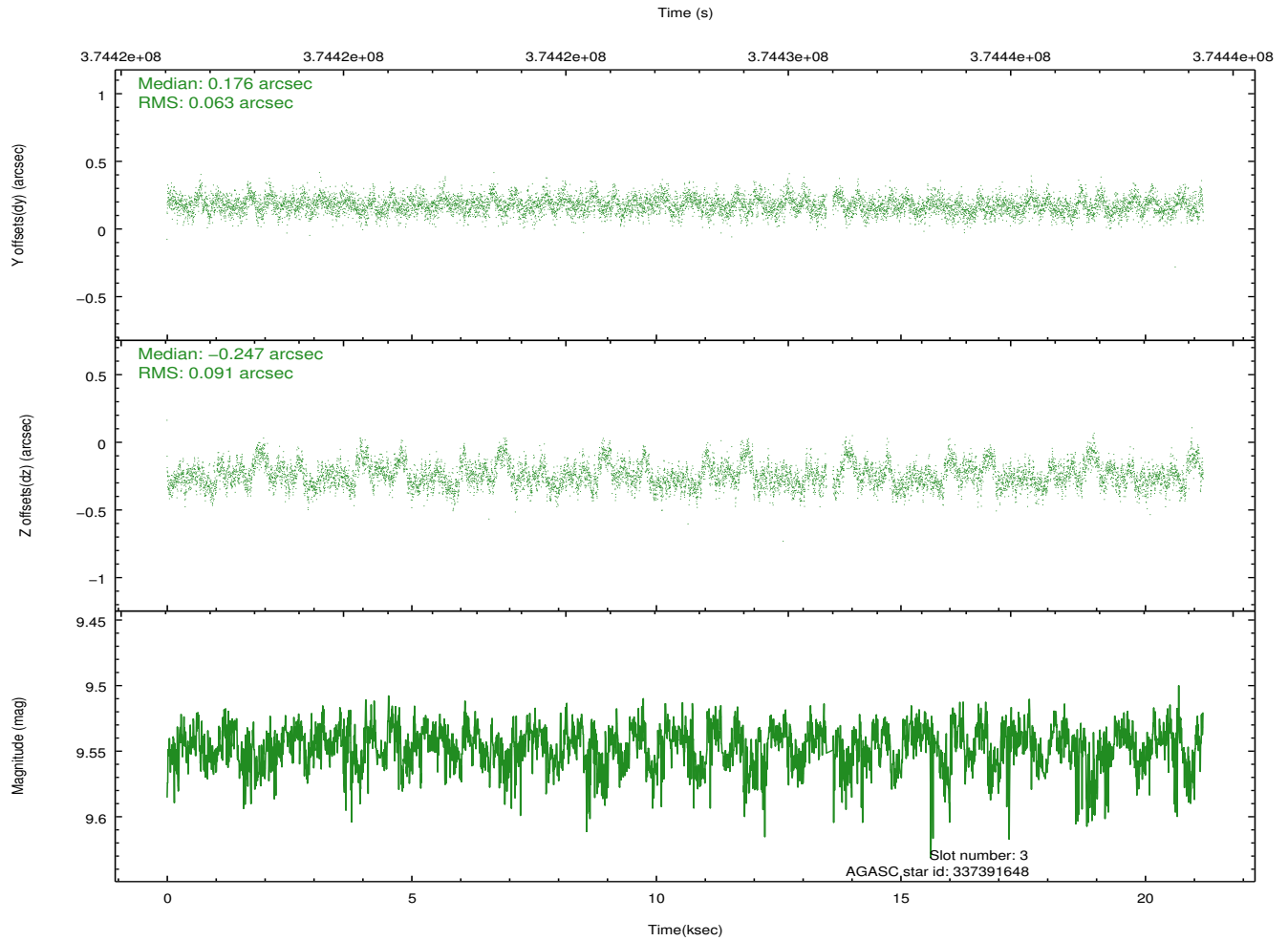
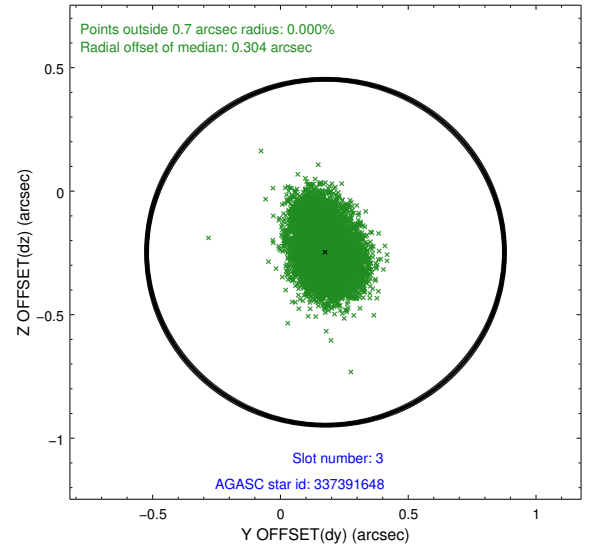
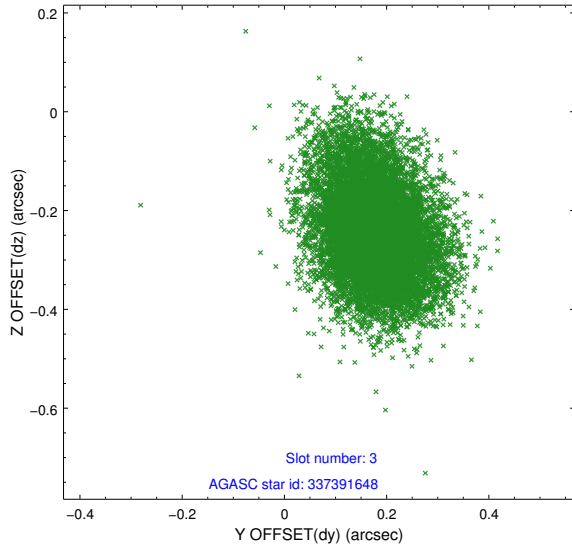


### Slot Statistics

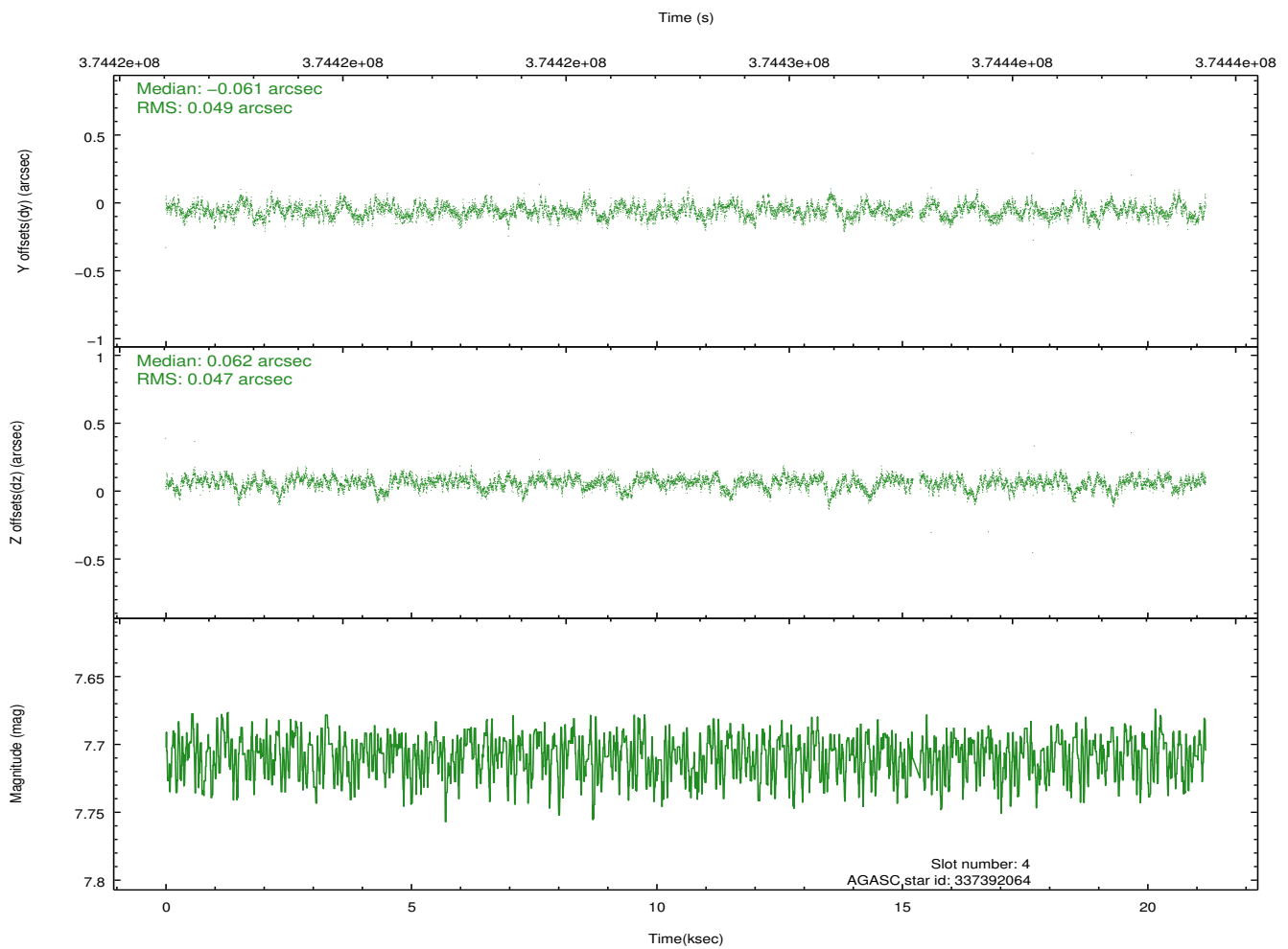
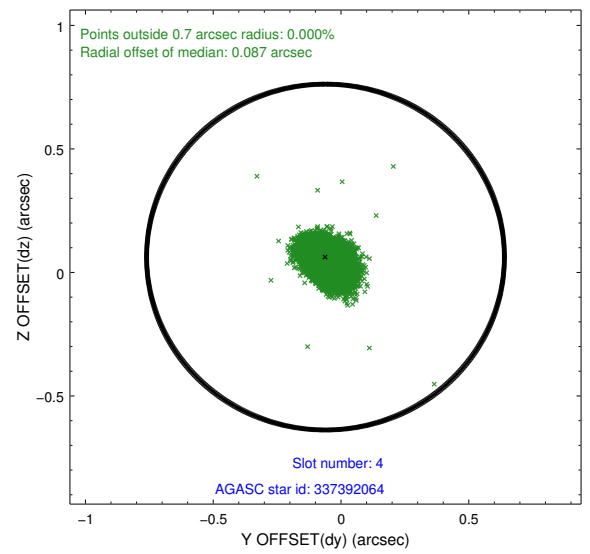
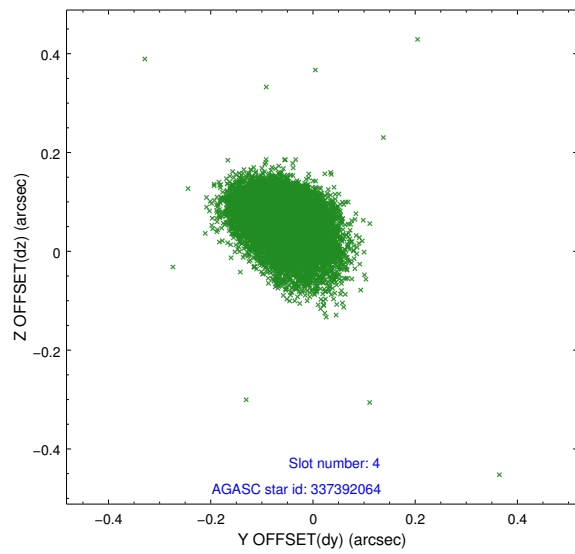
slot	status	id	mag	n_pts	med_dy	med_dz	dr1	dr2	ra	dec	mean_y	mean_z
0	FID	ACIS-I-1	7.04	5168	0.092	-0.051	0.038	0.047	0.000000	0.000000	924.89	-963.18
1	FID	ACIS-I-5	7.02	5167	-0.268	0.078	0.022	0.031	0.000000	0.000000	-1823.50	934.31
2	FID	ACIS-I-6	7.04	5168	0.084	0.043	0.017	0.029	0.000000	0.000000	390.22	1578.98
3	GUIDE	337391648	9.55	10252	0.176	-0.247	0.115	0.194	234.841389	34.465423	-311.66	183.65
4	GUIDE	337392064	7.71	10268	-0.061	0.062	0.070	0.120	235.072812	34.260305	479.73	-441.57
5	GUIDE	337393856	9.65	10306	-0.071	0.106	0.129	0.202	234.281867	33.879299	-1648.48	-2149.13
6	GUIDE	337386088	8.51	10329	-0.015	0.038	0.069	0.112	235.813318	34.812010	2338.14	1862.95
7	GUIDE	337385688	9.27	10324	-0.032	0.042	0.090	0.145	235.831423	34.881796	2351.10	2120.18

## 2.4 Star Slots

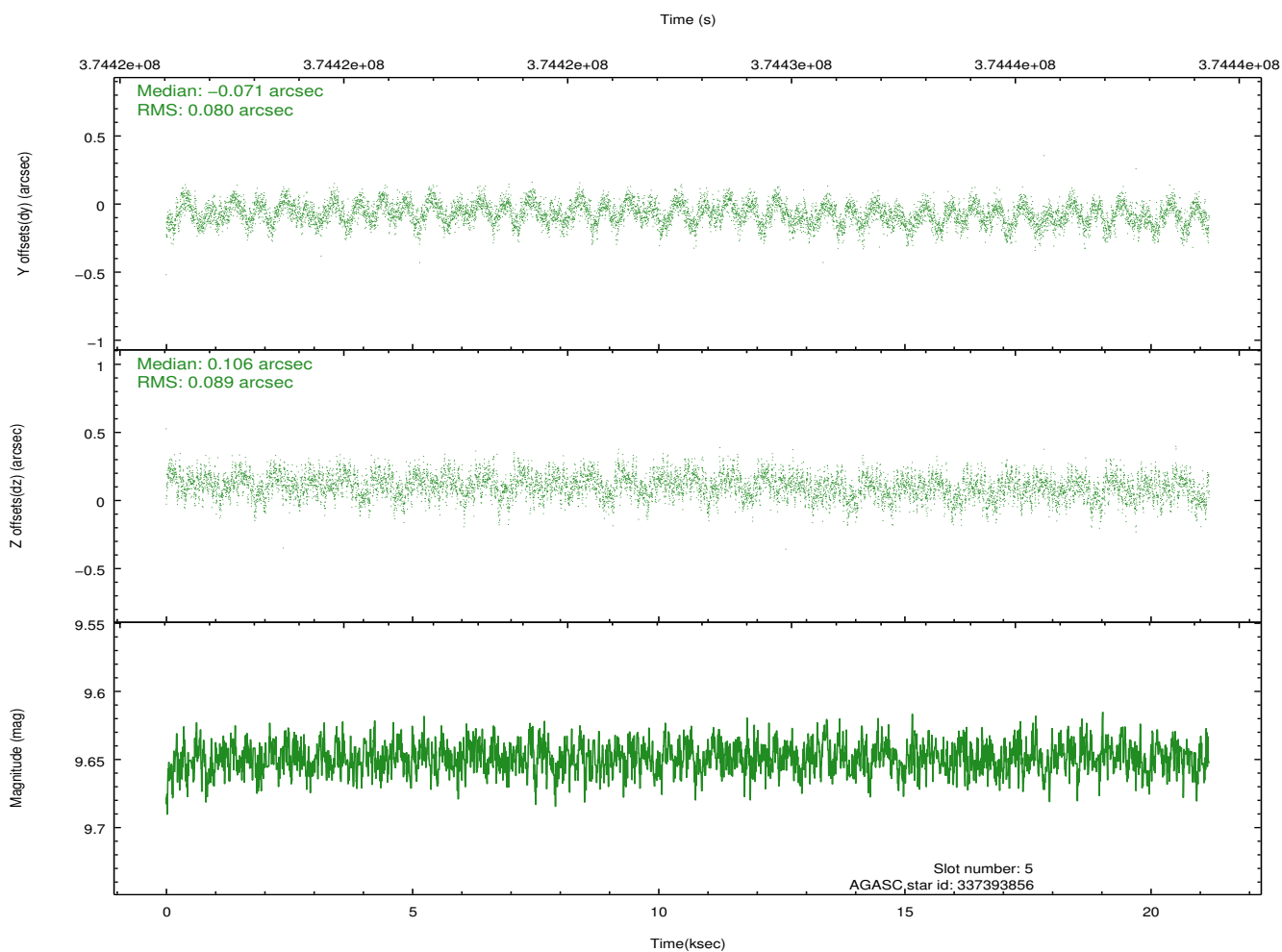
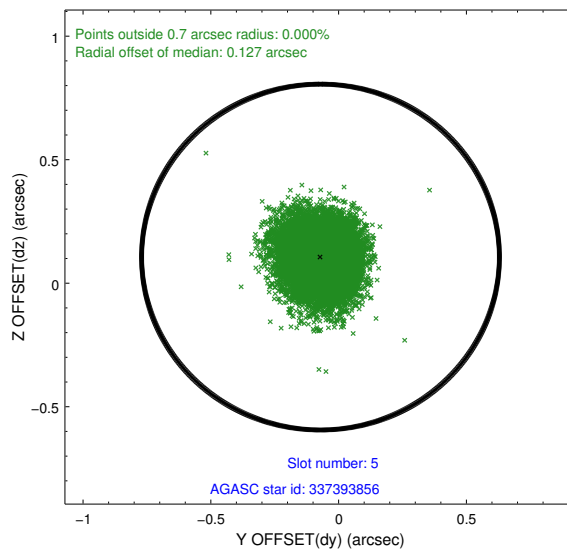
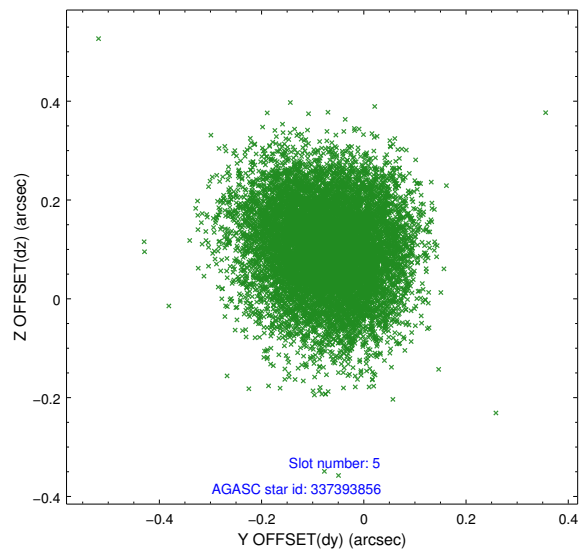
### 2.4.1 Slot 3



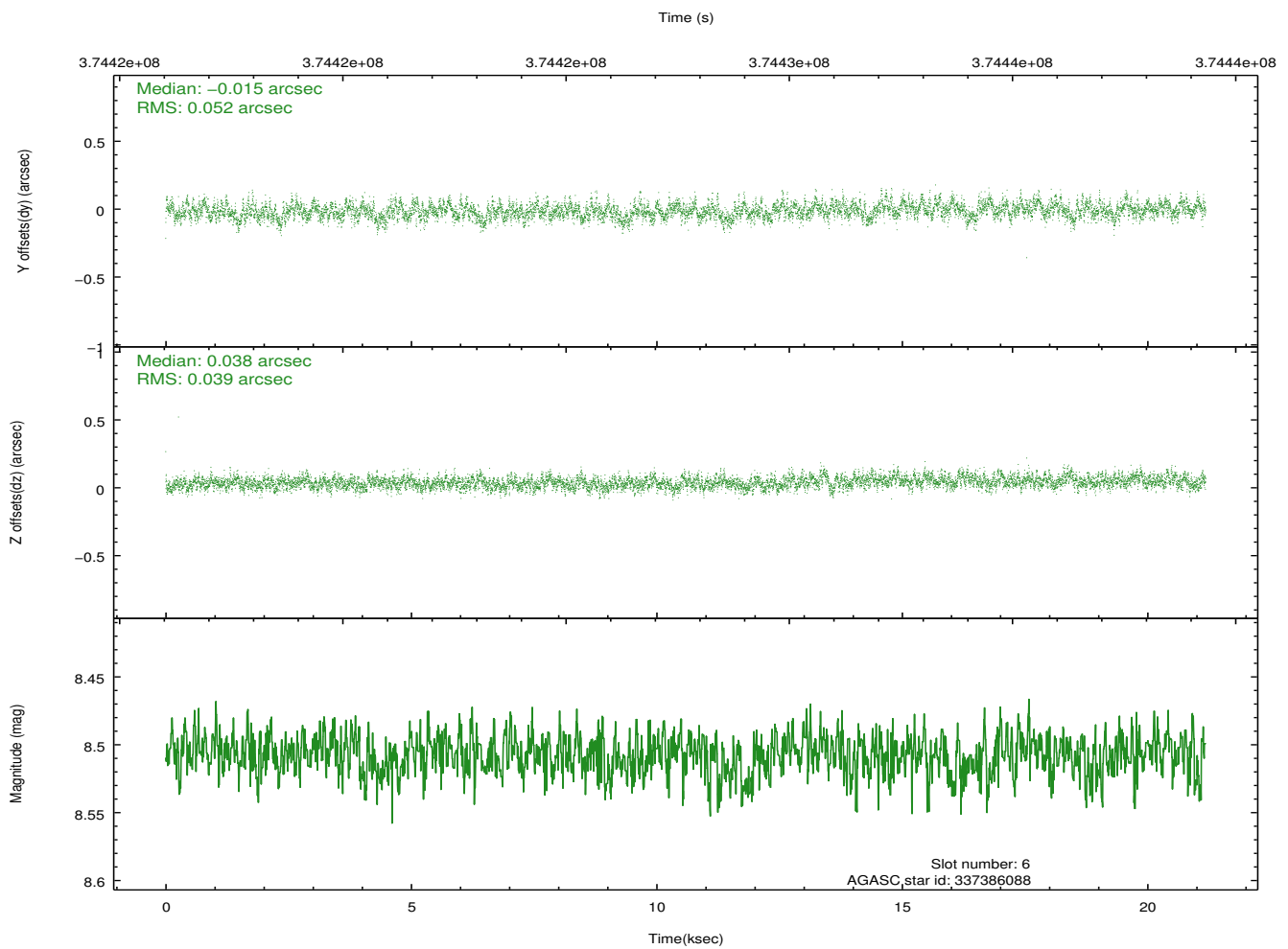
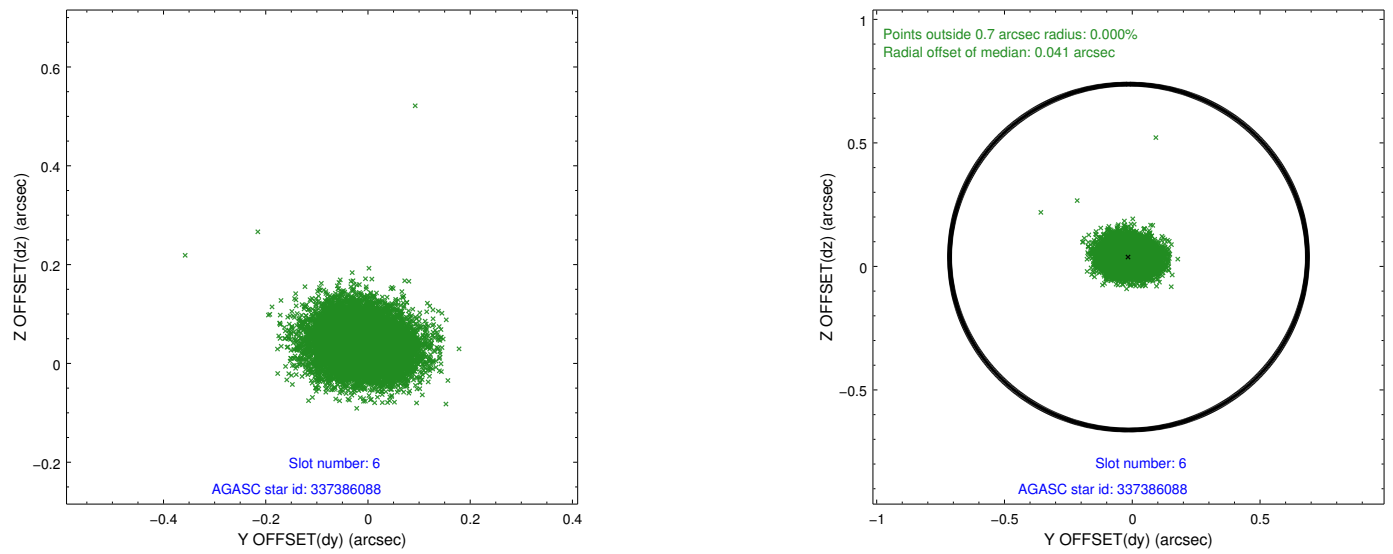
## 2.4.2 Slot 4



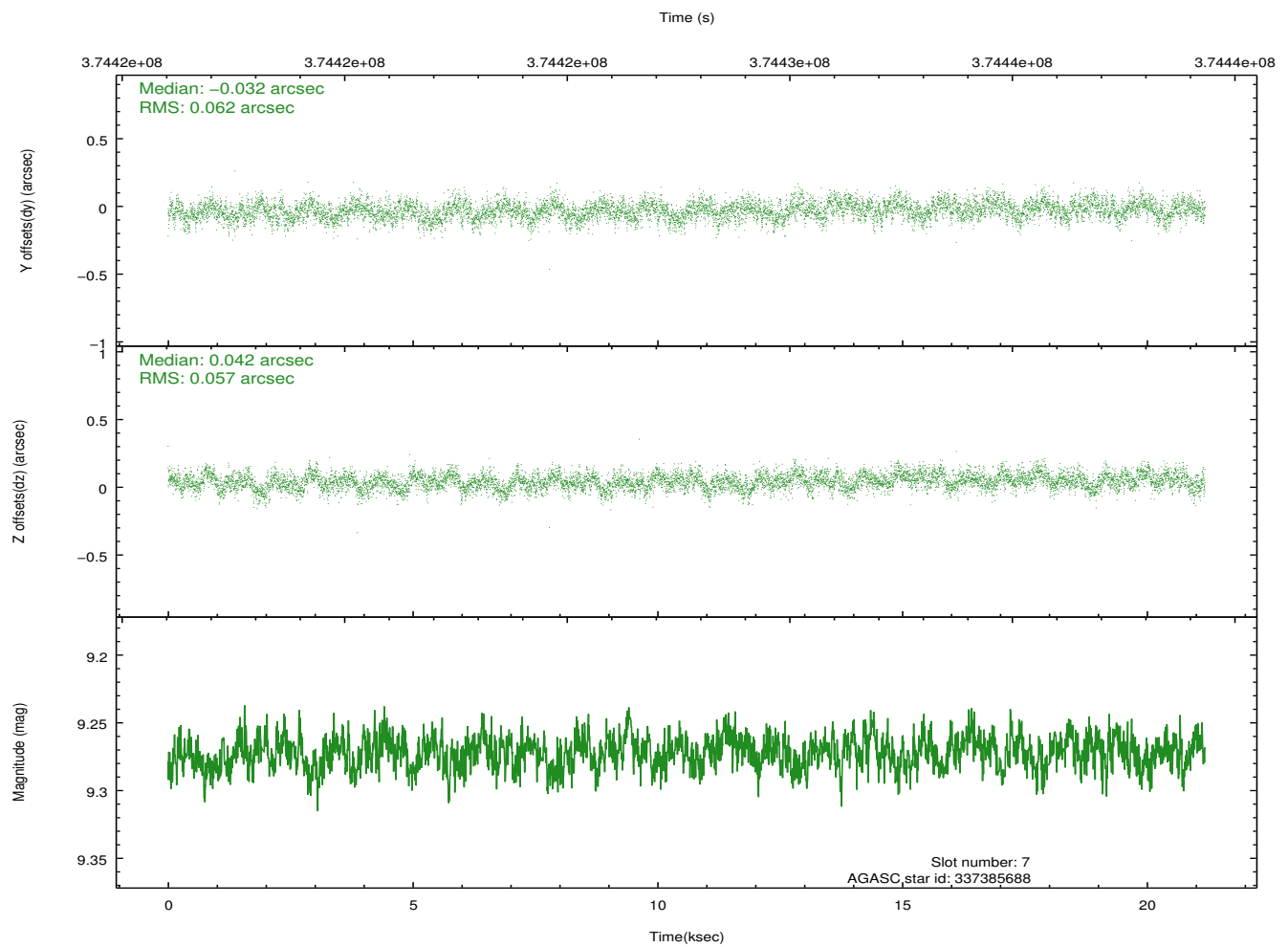
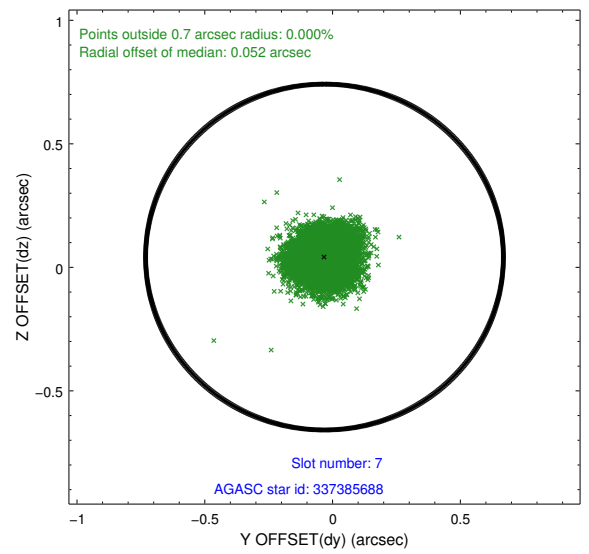
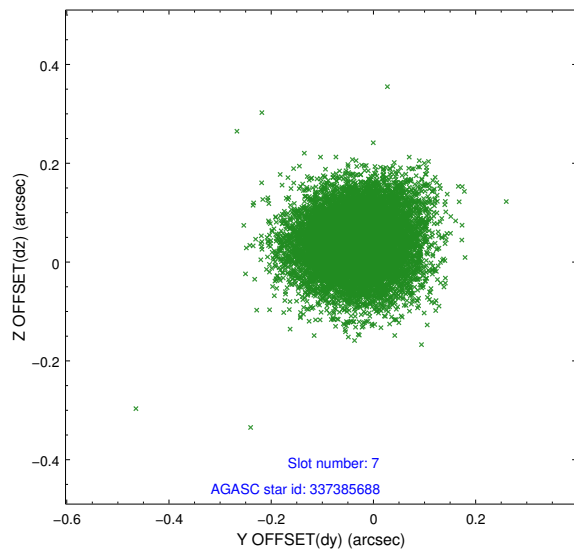
### 2.4.3 Slot 5



## 2.4.4 Slot 6

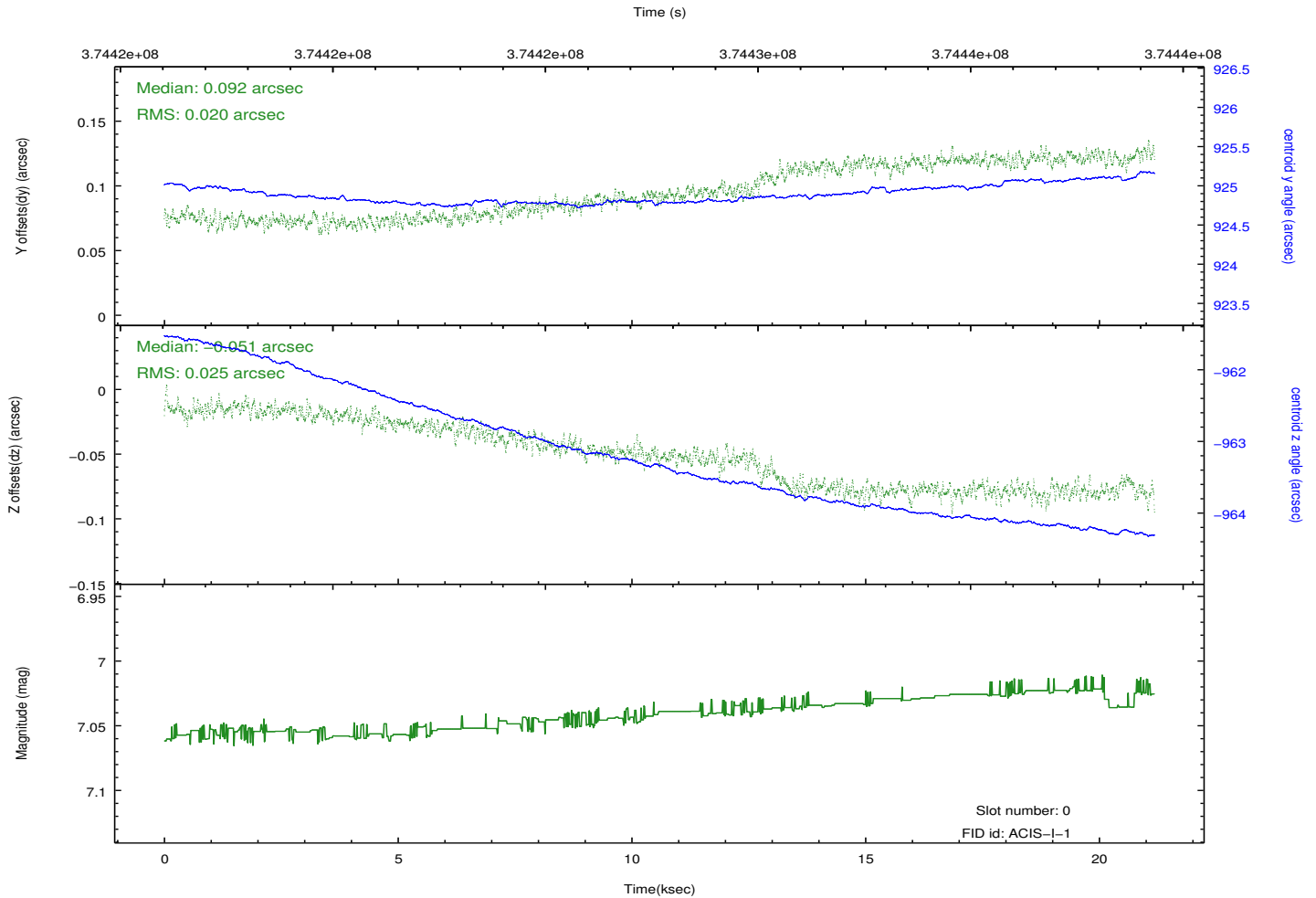
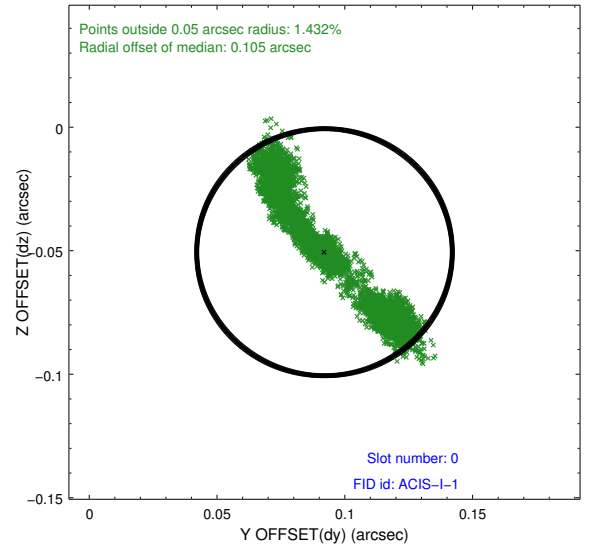
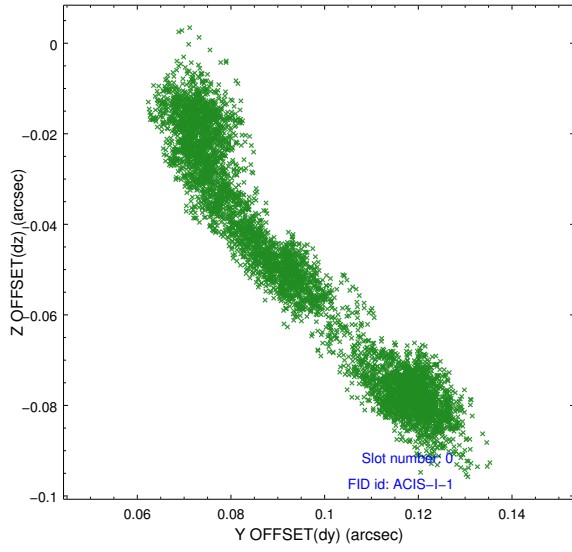


## 2.4.5 Slot 7

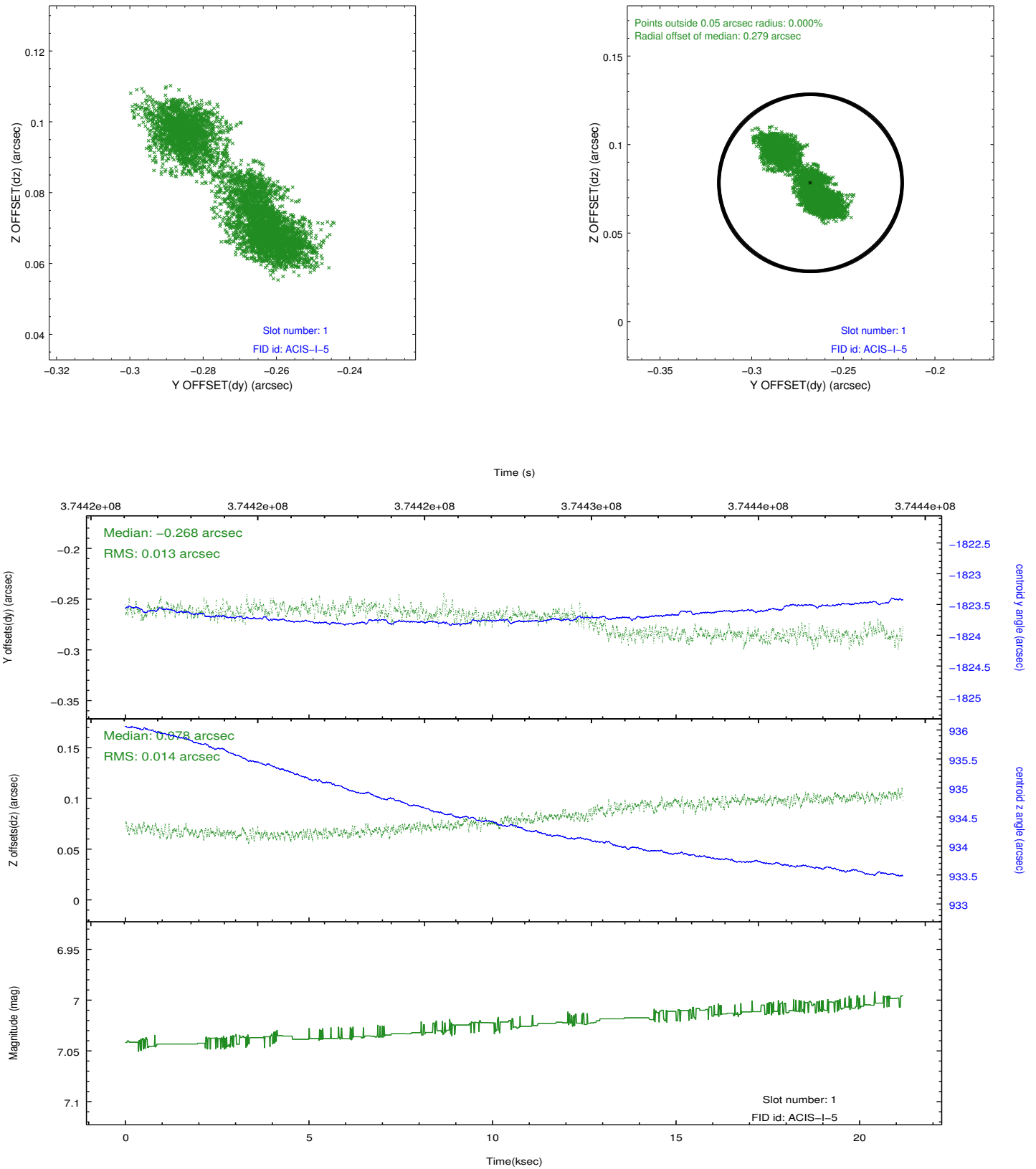


## 2.5 FID Slots

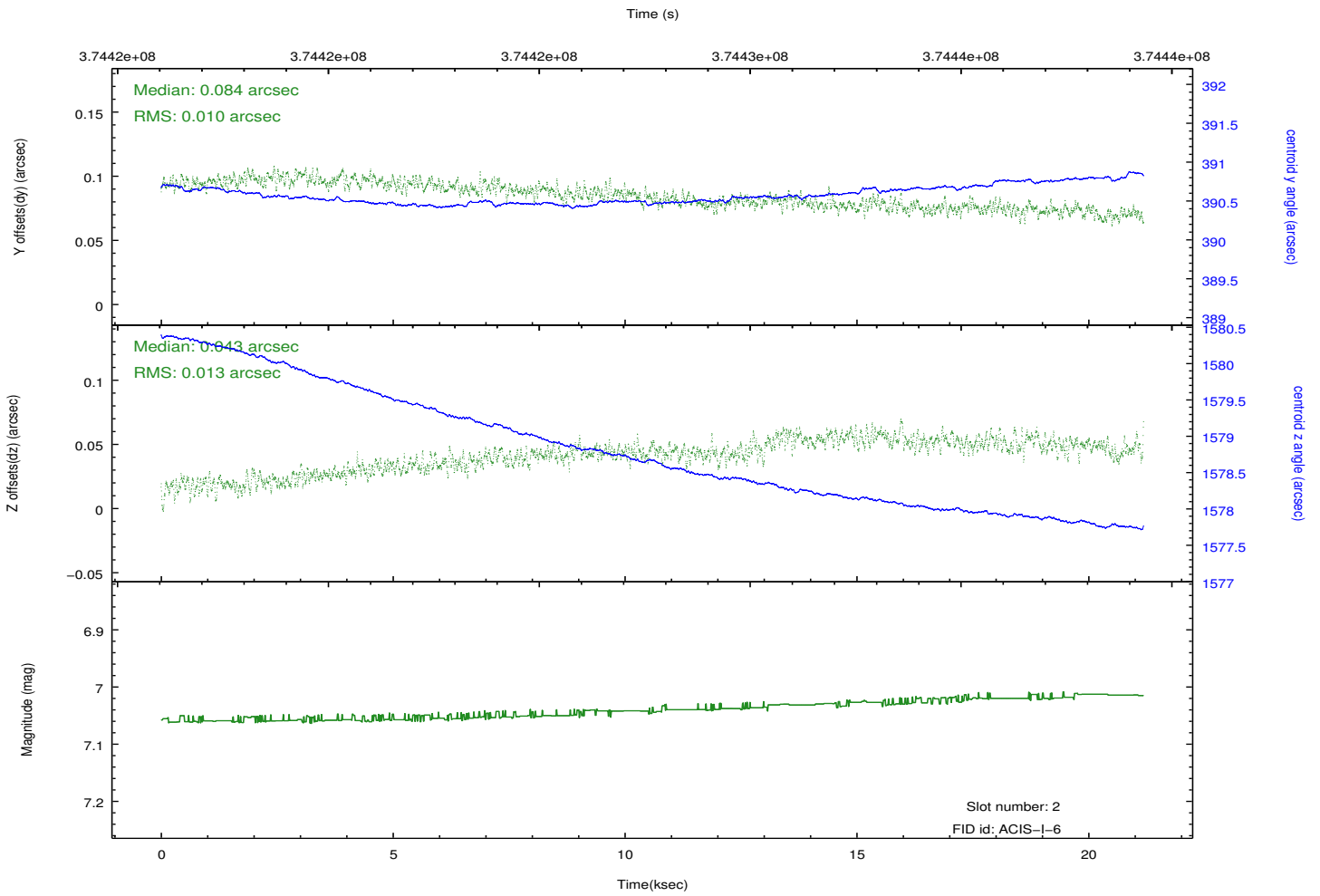
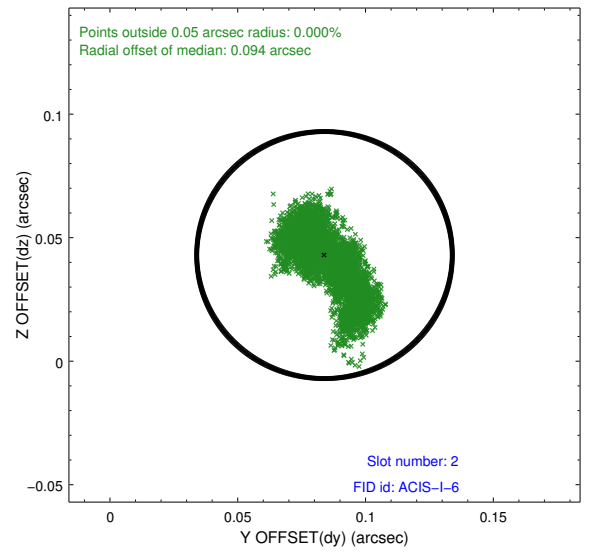
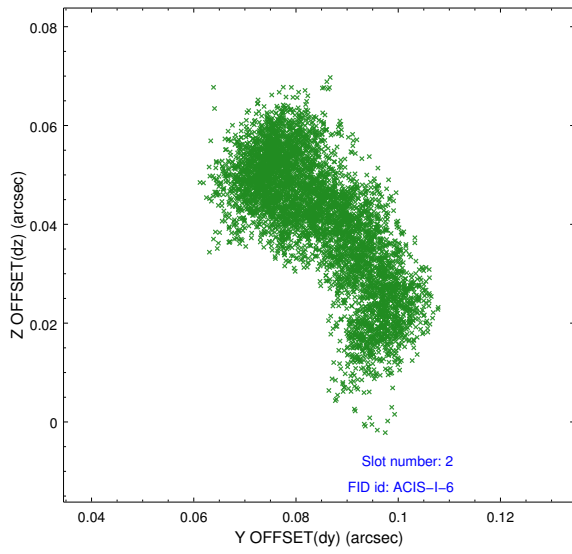
### 2.5.1 Slot 0



## 2.5.2 Slot 1



### 2.5.3 Slot 2



# A Summary

## A.1 Status

V&V Scientist	Jen Lauer
V&V Date (YYYY-MM-DD)	2012.06.20
V&V Edition	1
V&V Disposition and Status	OK
V&V Charge Time	21.176059232473

## A.2 Comments