

V&V Reference Report

L2 ASCDS Version : 8.4.5

Observation 11786 - L2 Version 2
Chandra X-Ray Center

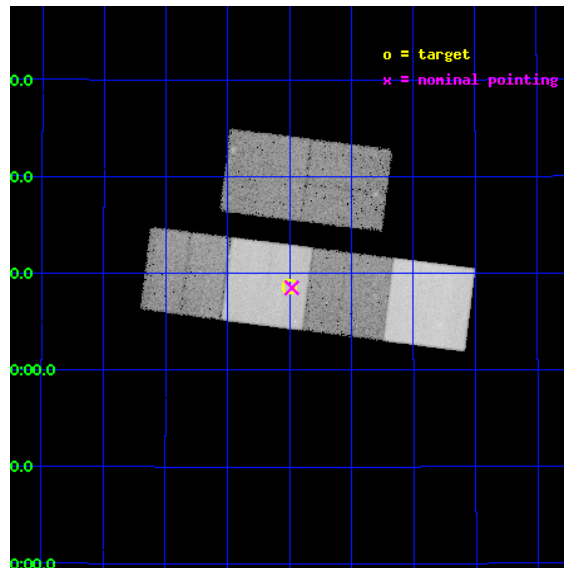
L2 Processing Date : Jun 13 2012

Contents

1	Front	2
2	OBI	3
2.1	OBI	3
2.1.1	Images	3
2.1.2	Bias	3
2.1.3	Parameters	4
2.1.4	Events	4
2.2	Compared Parameters	5
2.3	Aspect	6
2.4	Star Slots	9
2.4.1	Slot 3	9
2.4.2	Slot 4	10
2.4.3	Slot 5	11
2.4.4	Slot 6	12
2.4.5	Slot 7	13
2.5	FID Slots	14
2.5.1	Slot 0	14
2.5.2	Slot 1	15
2.5.3	Slot 2	16
A	Summary	17
A.1	Status	17
A.2	Comments	17

1 Front

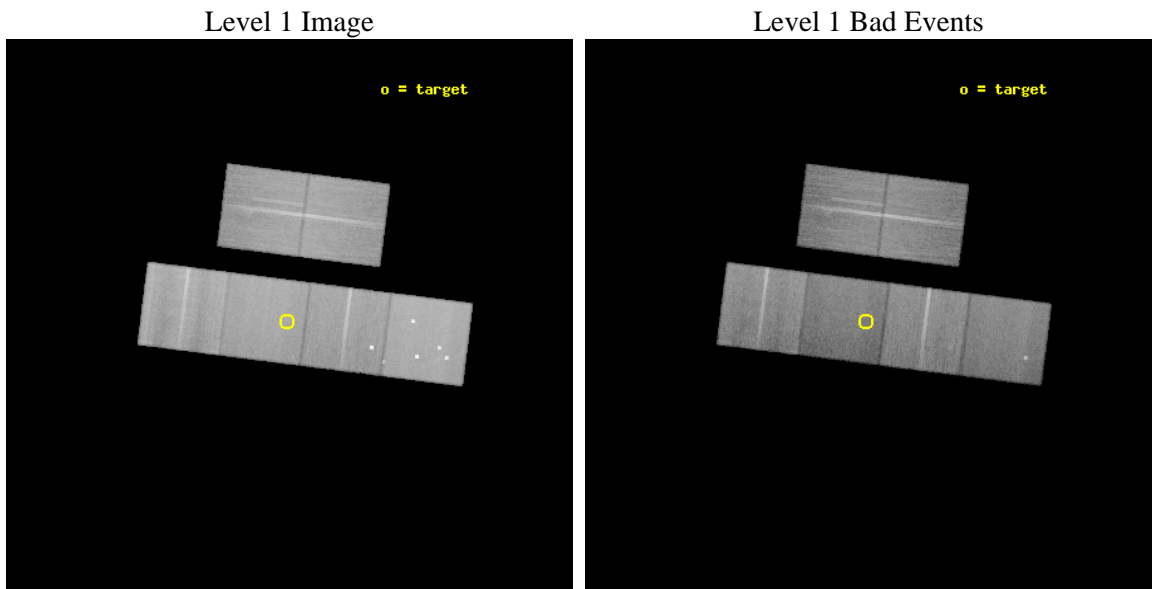
seq_num	900921	Sequence number
obs_id	11786	Observation id
title	COMBH: Chandra Observations of M-sigma Black Holes	Proposal title
observer	Dr. Kayhan Gultekin	Principal investigator
object	NGC7457	Source name
dtycycle	0	
cycle	P	events from which exps? Prim/Second/Both
ra_targ	345.249583	Observer's specified target RA [deg]
dec_targ	30.144889	Observer's specified target Dec [deg]
ra_nom	345.24520289895	Nominal RA [deg]
dec_nom	30.141852749576	Nominal Dec [deg]
roll_nom	187.17676487579	Nominal Roll [deg]
revision	2	Processing version of data
ontime	29038.604278564	Sum of GTIs [s]
livetime	28670.899986241	Livetime [s]
ontime2	29038.645318568	Sum of GTIs [s]
ontime3	29031.999137521	Sum of GTIs [s]
ontime5	29038.563238561	Sum of GTIs [s]
ontime6	29035.281178296	Sum of GTIs [s]
ontime7	29038.604278564	Sum of GTIs [s]
ontime8	29038.440118551	Sum of GTIs [s]
l2events	384659	Number of level 2 events



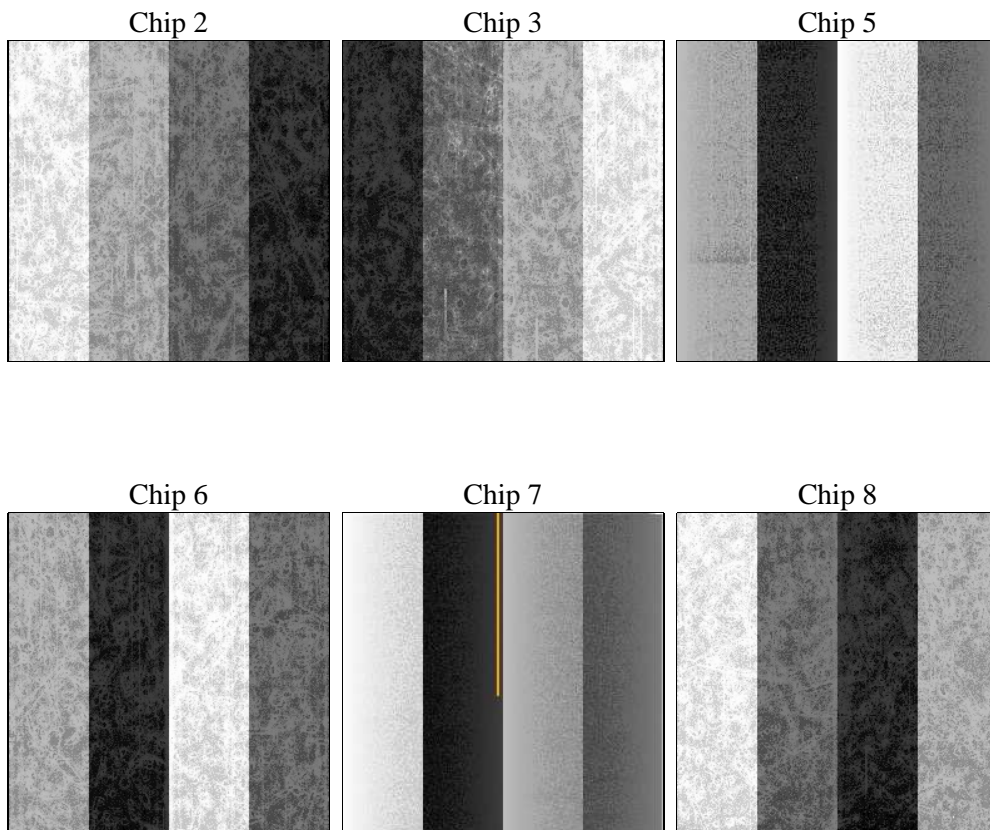
2 OBI

2.1 OBI

2.1.1 Images



2.1.2 Bias



2.1.3 Parameters

obi_num	0	Obi number	sched_exp_time	29000.000000	[s] Scheduled observation exposure time
ascdsver	8.4.5	Processing system revision	ontime	29038.604278564	Sum of GTIs [s]
caldbver	4.4.10	 	ontime2	29038.645318568	Sum of GTIs [s]
date	2012-06-13T04:25:53	Date and time of file creation	ontime3	29031.999137521	Sum of GTIs [s]
revision	2	Processing version of data	ontime5	29038.563238561	Sum of GTIs [s]
			ontime6	29035.281178296	Sum of GTIs [s]
			ontime7	29038.604278564	Sum of GTIs [s]
			ontime8	29038.440118551	Sum of GTIs [s]
			l1events	1752058	Number of level 1 events

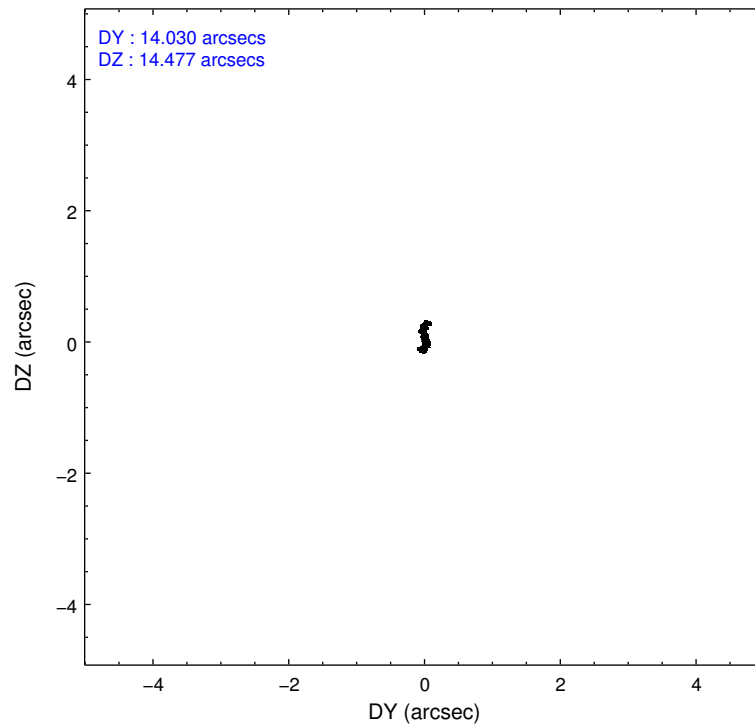
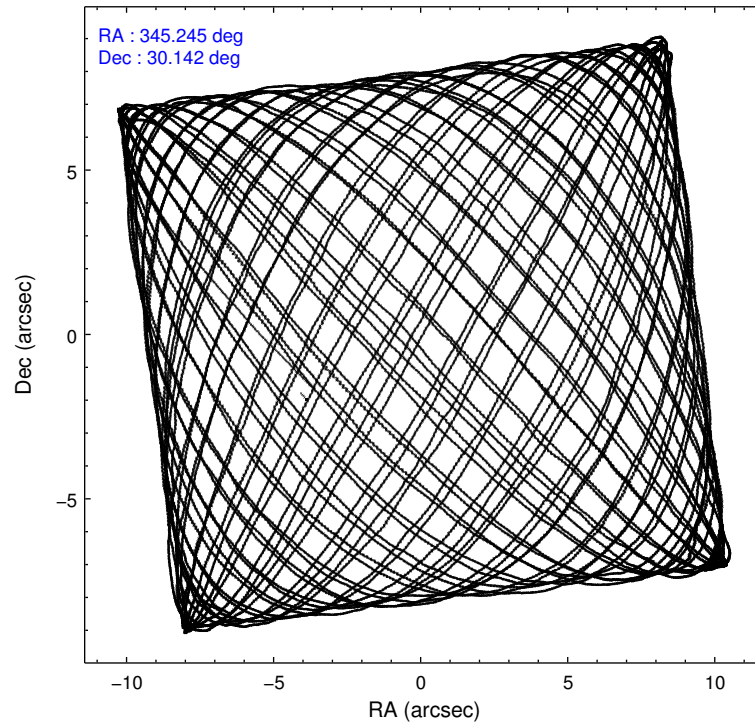
2.1.4 Events

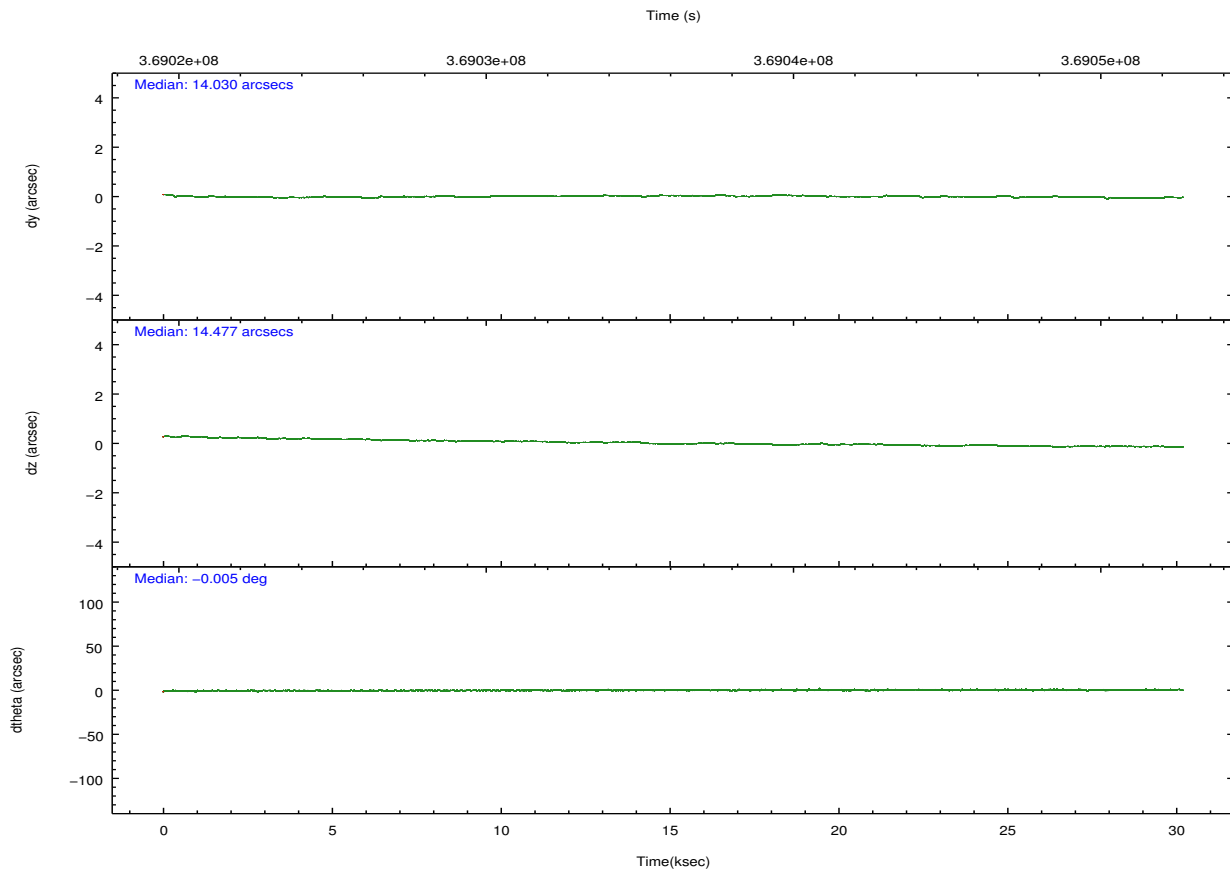
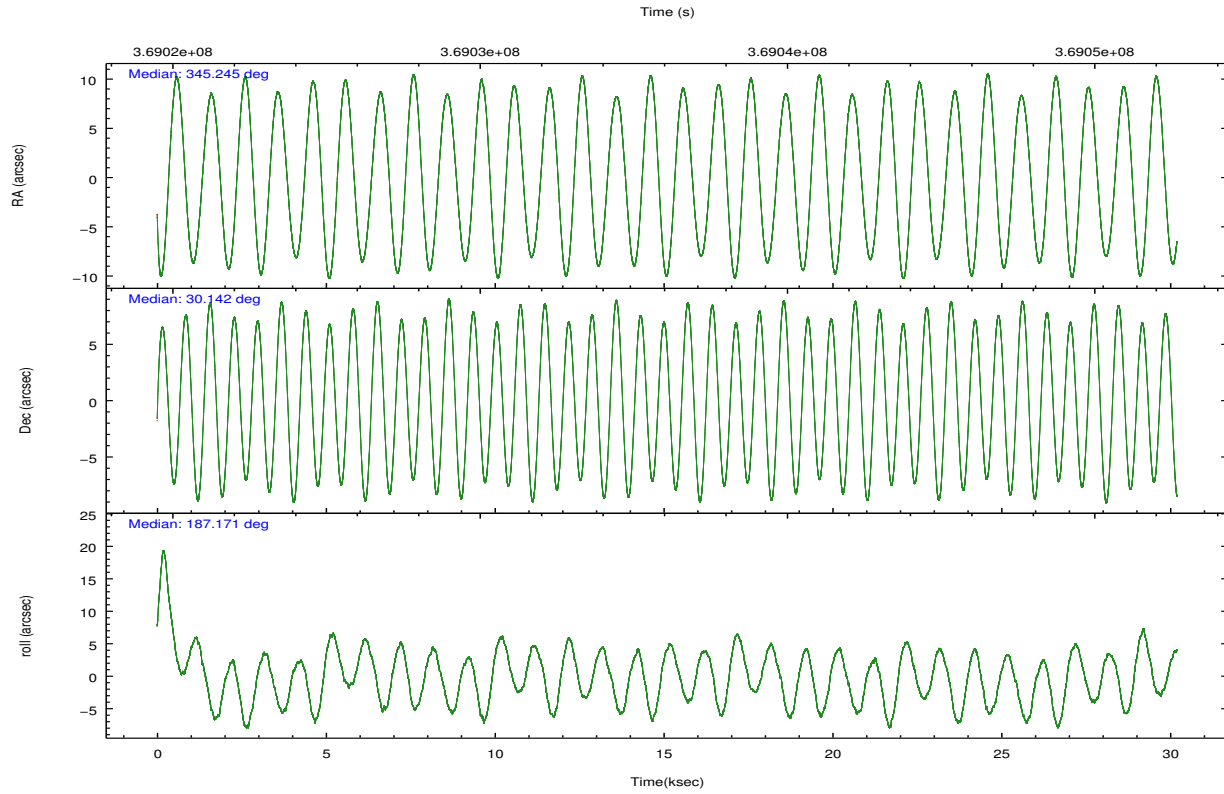
	ccd 2	ccd 3	ccd 5	ccd 6	ccd 7	ccd 8		ccd 2	ccd 3	ccd 5	ccd 6	ccd 7	ccd 8
level 1 events	258961	247066	376063	262243	289280	318445	grade 0 events	9336	8401	32582	17613	12378	22761
rejected events	233266	223439	180533	227256	157608	239339		3%	3%	8%	6%	4%	7%
rejected %	90%	90%	48%	86%	54%	75%	grade 1 events	154	146	625	192	400	276
								0%	0%	0%	0%	0%	0%
							grade 2 events	6306	5127	55933	6083	26863	18580
								2%	2%	14%	2%	9%	5%
							grade 3 events	2691	2699	6927	2789	11835	8458
								1%	1%	1%	1%	4%	2%
							grade 4 events	2615	2679	6841	2819	11739	7922
								1%	1%	1%	1%	4%	2%
							grade 5 events	8950	10213	28031	10361	30365	15436
								3%	4%	7%	3%	10%	4%
							grade 6 events	4749	4721	93267	5686	68868	21387
								1%	1%	24%	2%	23%	6%
							grade 7 events	224160	213080	151857	216700	126832	223625
								86%	86%	40%	82%	43%	70%

2.2 Compared Parameters

Parameter	Planned	Actual	Parameter	Planned	Actual
Instrument	ACIS	ACIS	Obspar format version number	7	7
Detector	ACIS-235678	ACIS-235678	Obspar file type	PREDICTED	ACTUAL
Grating	NONE	NONE	Obspar update status	NONE	UPDATED
Data mode	FAINT	FAINT	CCD I0 on	N	N
Observation mode	POINTING	POINTING	CCD I1 on	N	N
[deg] Pointing RA	345.270153	345.2452028989509	CCD I2 on	O1	Y
[deg] Pointing Dec	30.158671	30.14185274957583	CCD I3 on	O2	Y
[deg] Pointing Roll	187.007611	187.1767648757912	CCD S0 on	N	N
[mm] SIM focus pos	-0.684267	-0.6828225247311905	CCD S1 on	Y	Y
[mm] SIM defocus	0	0.001444936568705701	CCD S2 on	Y	Y
[mm] SIM translation stage pos	-190.132523	-190.1400660498719	CCD S3 on	Y	Y
[mm] SIM translation stage offset	0	0.00754346686406393	CCD S4 on	Y	Y
[s] Observation start time (MET)	369022176.184000	369020410.32447	CCD S5 on	N	N
Observation start date	2009-09-11T02:08:30	2009-09-11T01:40:10	Number of optional ACIS chips dropped	0	0
[s] Observation end time (MET)	369051176.184000	369052432.35108	On-chip summing requested	N	N
Observation end date	2009-09-11T10:11:50	2009-09-11T10:33:52	Subarray requested	NONE	NONE
Read mode	TIMED	TIMED	Alternating exposures requested	N	N
			[s] Primary exposure time	0.000000	3.2

2.3 Aspect



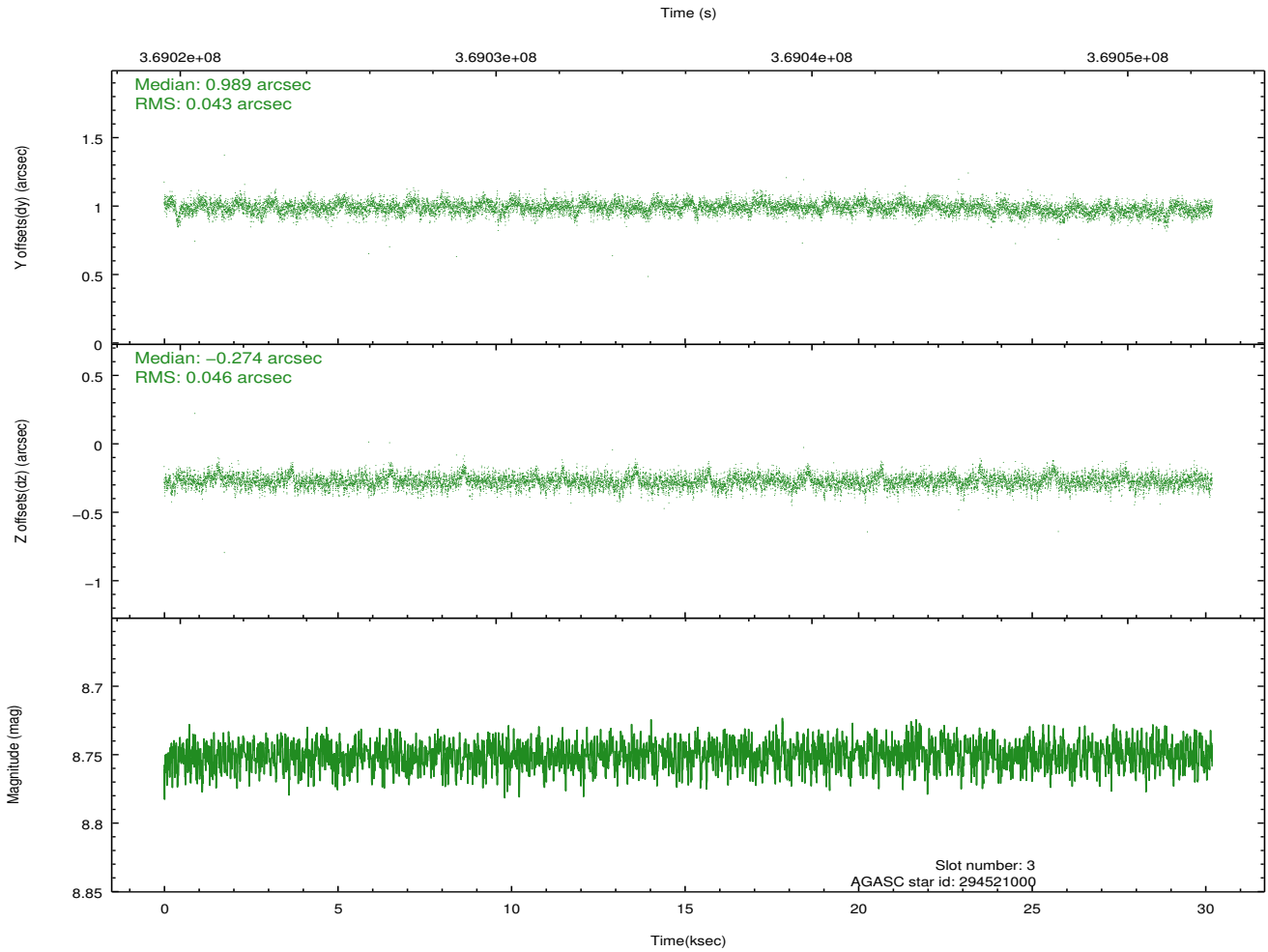
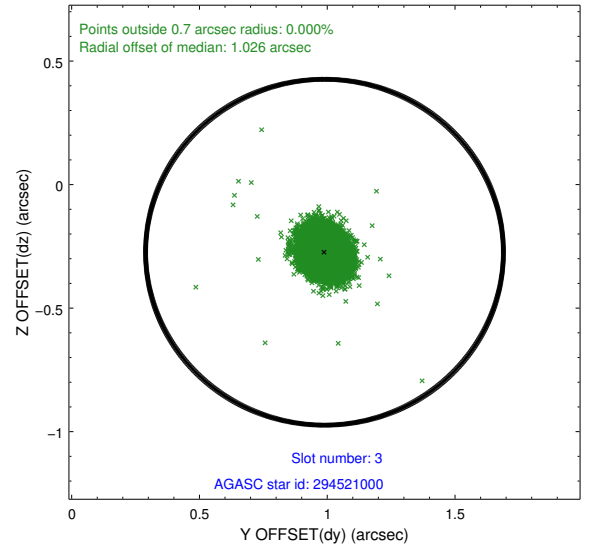
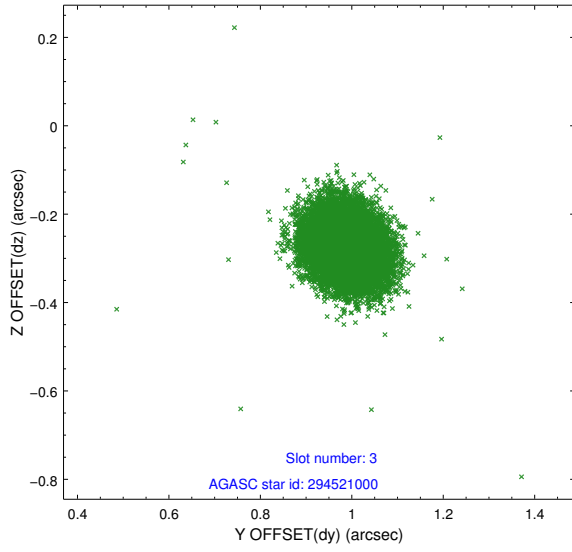


Slot Statistics

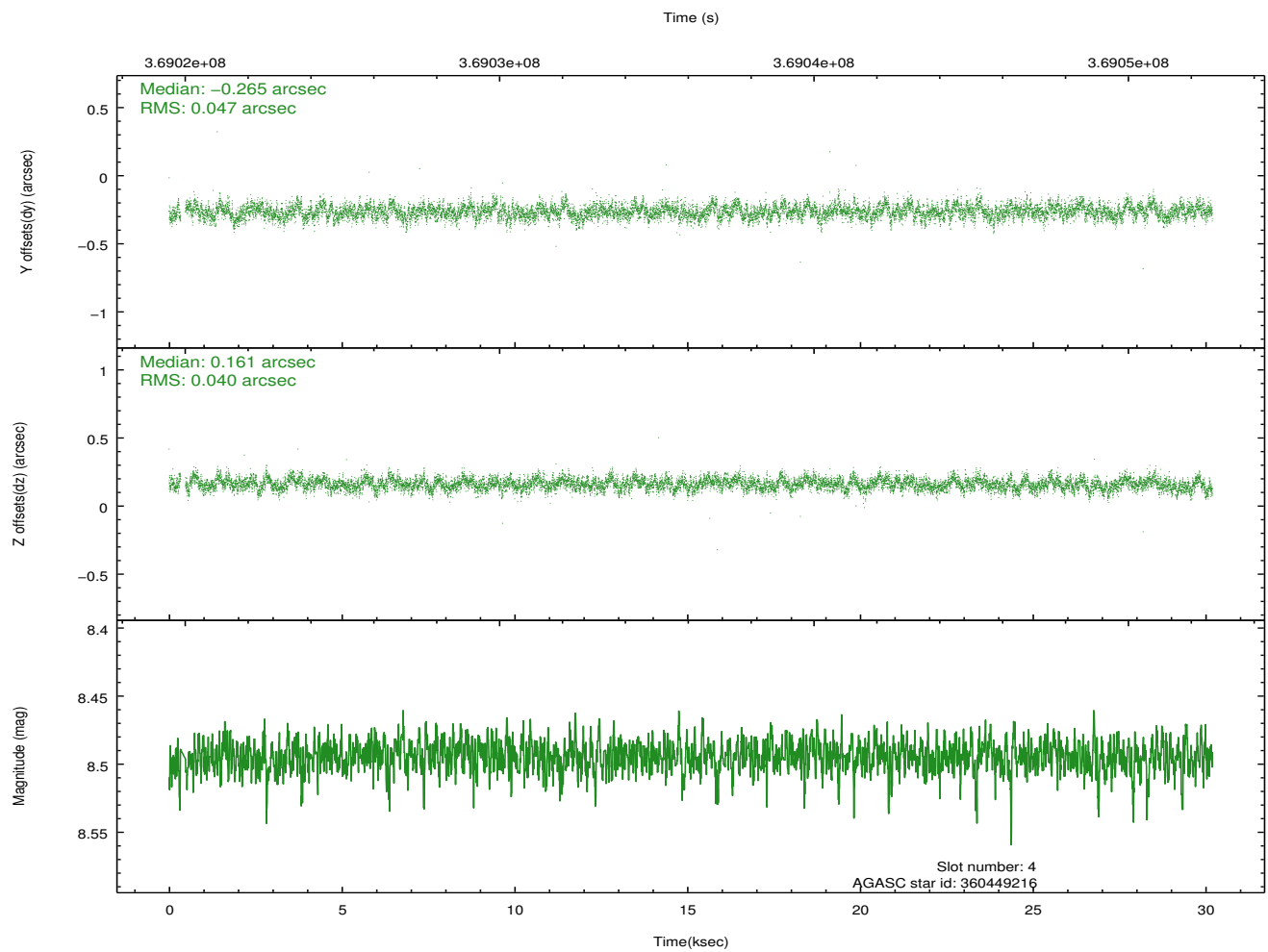
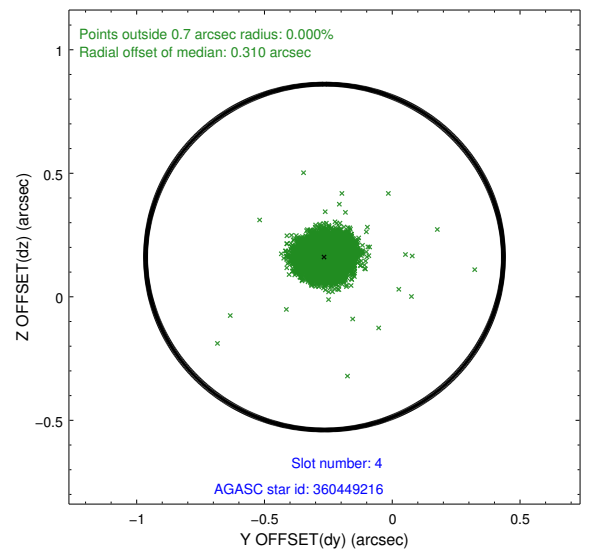
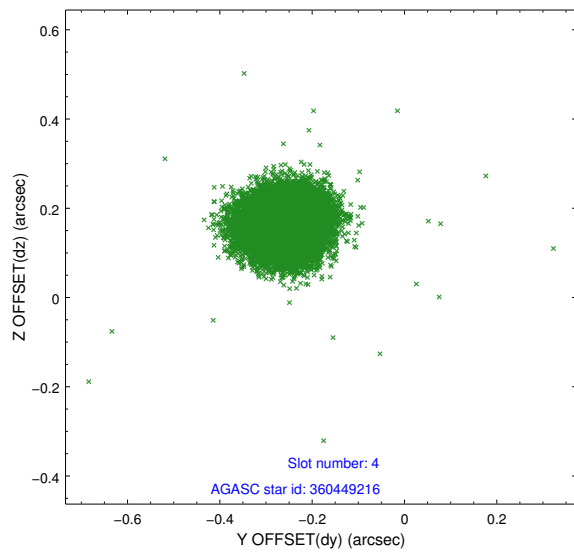
slot	status	id	mag	n_pts	med_dy	med_dz	dr1	dr2	ra	dec	mean_y	mean_z
0	FID	ACIS-S-2	6.91	7364	-0.069	-0.034	0.009	0.016	0.000000	0.000000	-767.02	-1735.91
1	FID	ACIS-S-4	7.00	7364	0.200	0.043	0.009	0.016	0.000000	0.000000	2146.47	172.60
2	FID	ACIS-S-5	7.02	7365	-0.162	-0.000	0.010	0.016	0.000000	0.000000	-1819.89	166.27
3	GUIDE	294521000	8.75	14720	0.989	-0.274	0.065	0.109	345.644032	29.805065	-1002.89	1403.74
4	GUIDE	360449216	8.49	14654	-0.265	0.161	0.065	0.105	344.607331	30.221870	2018.26	-482.65
5	GUIDE	294399304	9.12	14718	-0.360	-0.171	0.112	0.181	344.902322	29.451908	1454.68	2382.86
6	GUIDE	360463360	8.94	14718	-0.214	0.184	0.081	0.134	344.479749	30.284956	2382.64	-758.86
7	GUIDE	360456096	9.15	14716	-0.160	0.100	0.097	0.157	344.537529	30.365373	2167.49	-1023.18

2.4 Star Slots

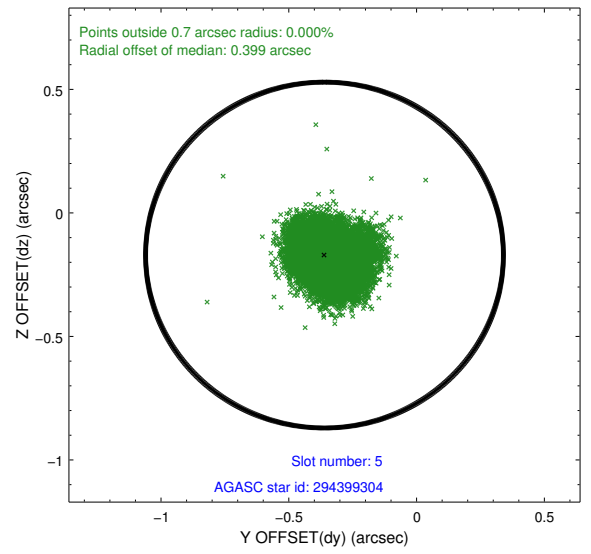
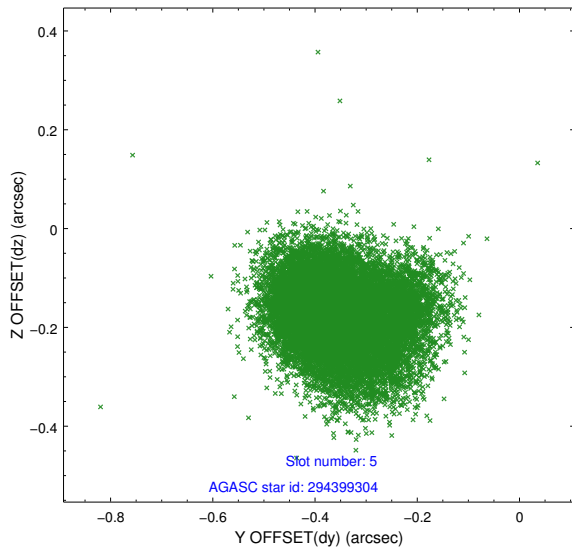
2.4.1 Slot 3



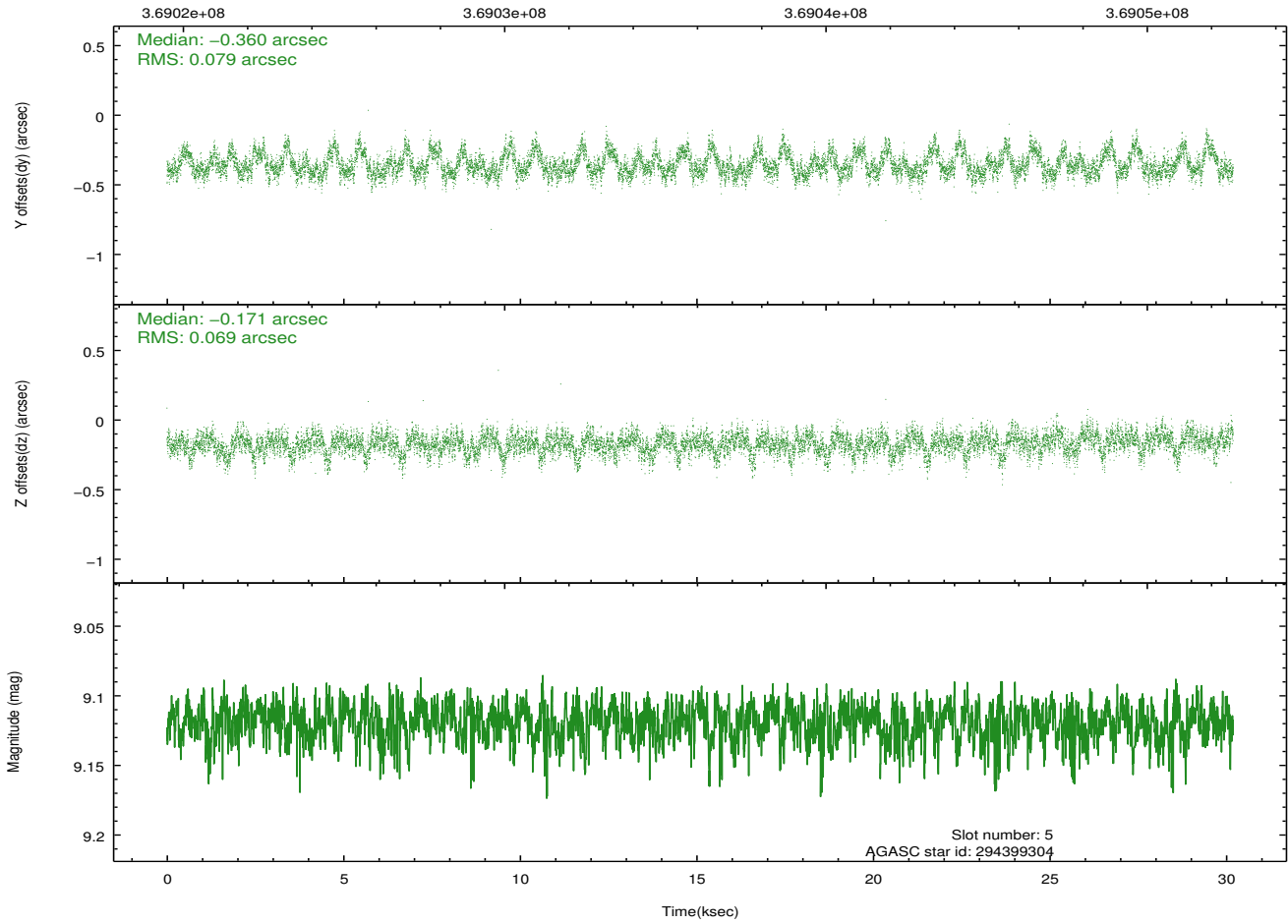
2.4.2 Slot 4



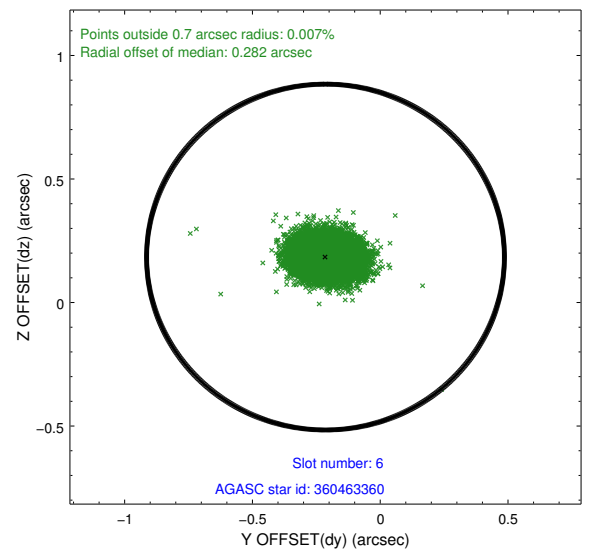
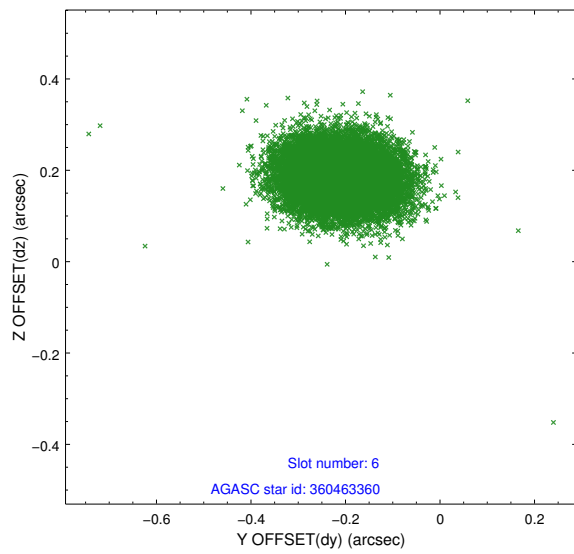
2.4.3 Slot 5



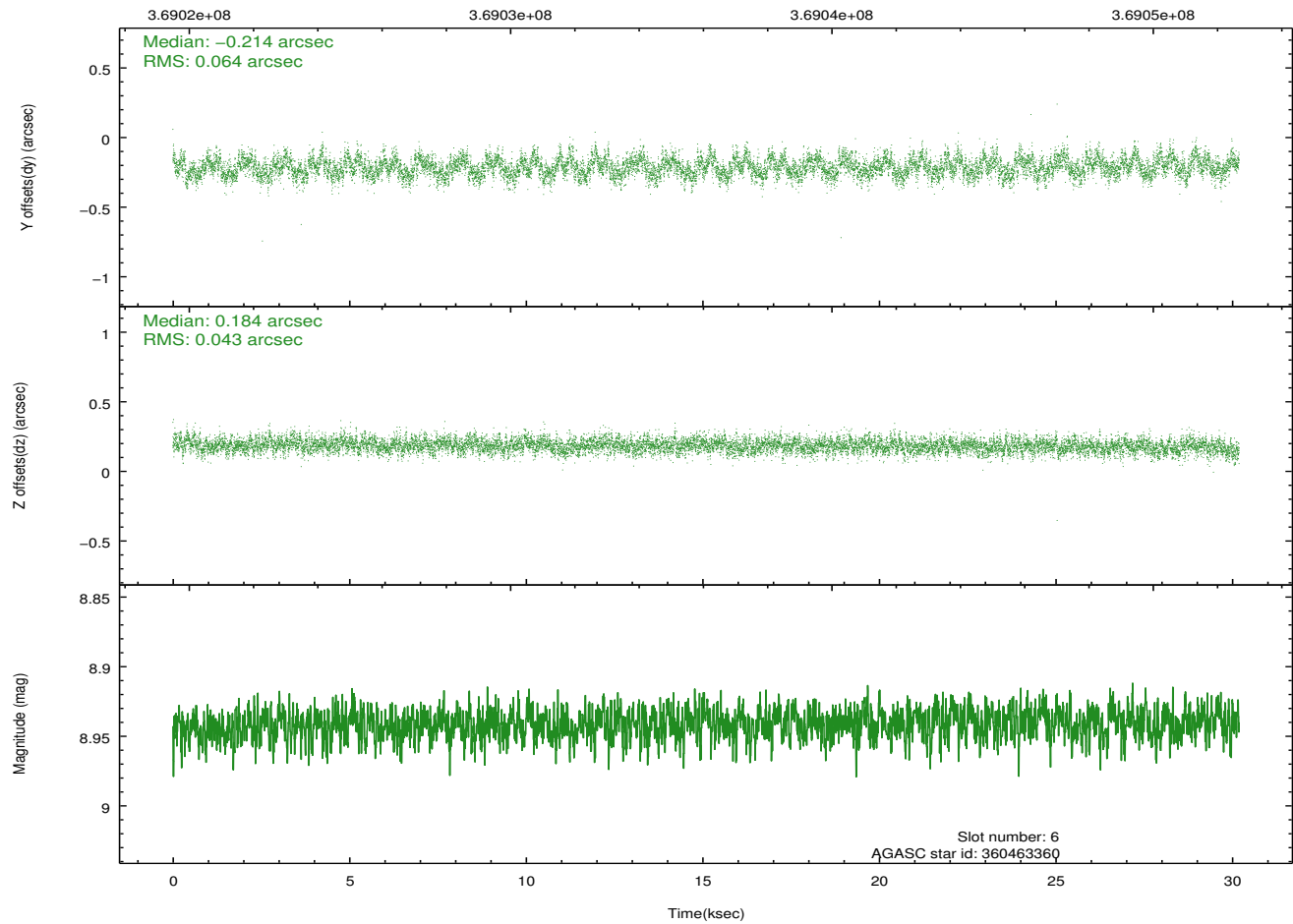
Time (s)



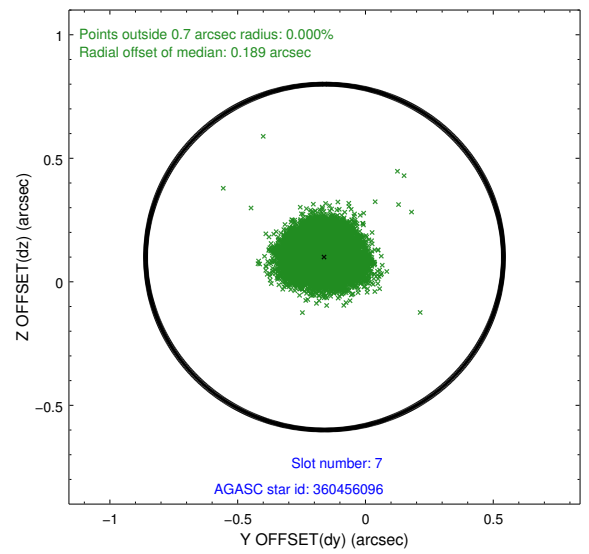
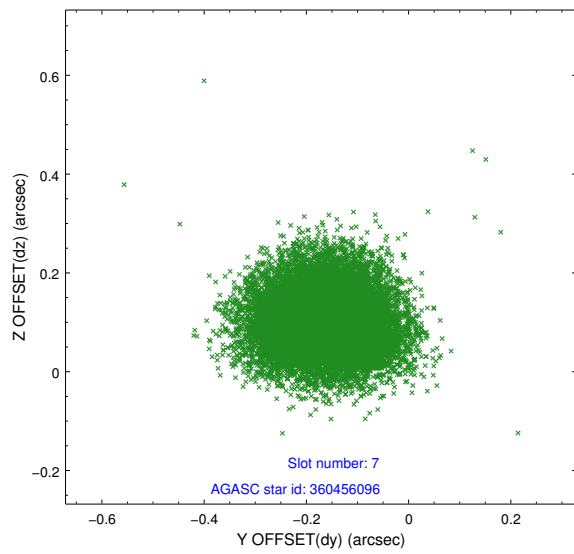
2.4.4 Slot 6



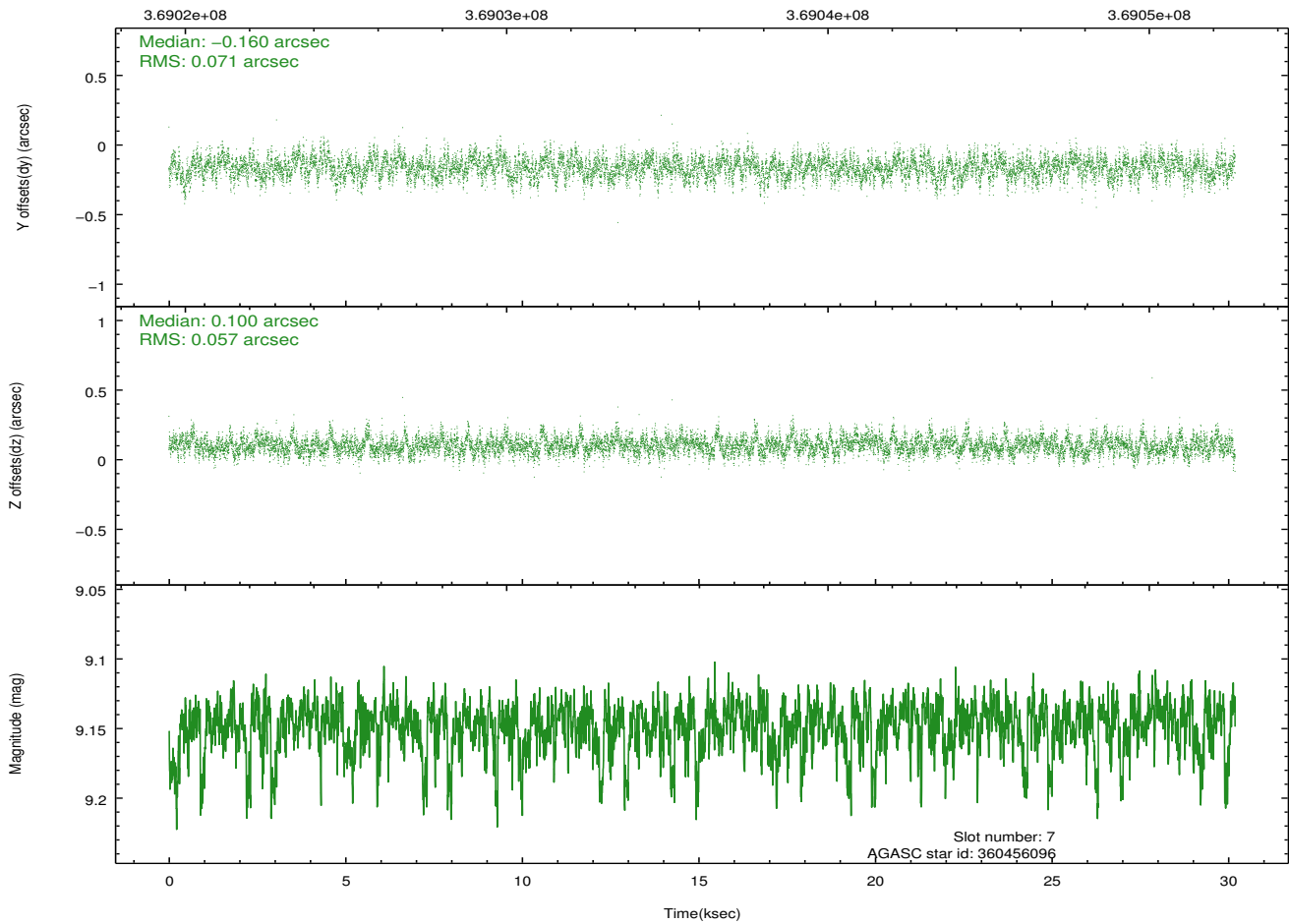
Time (s)



2.4.5 Slot 7

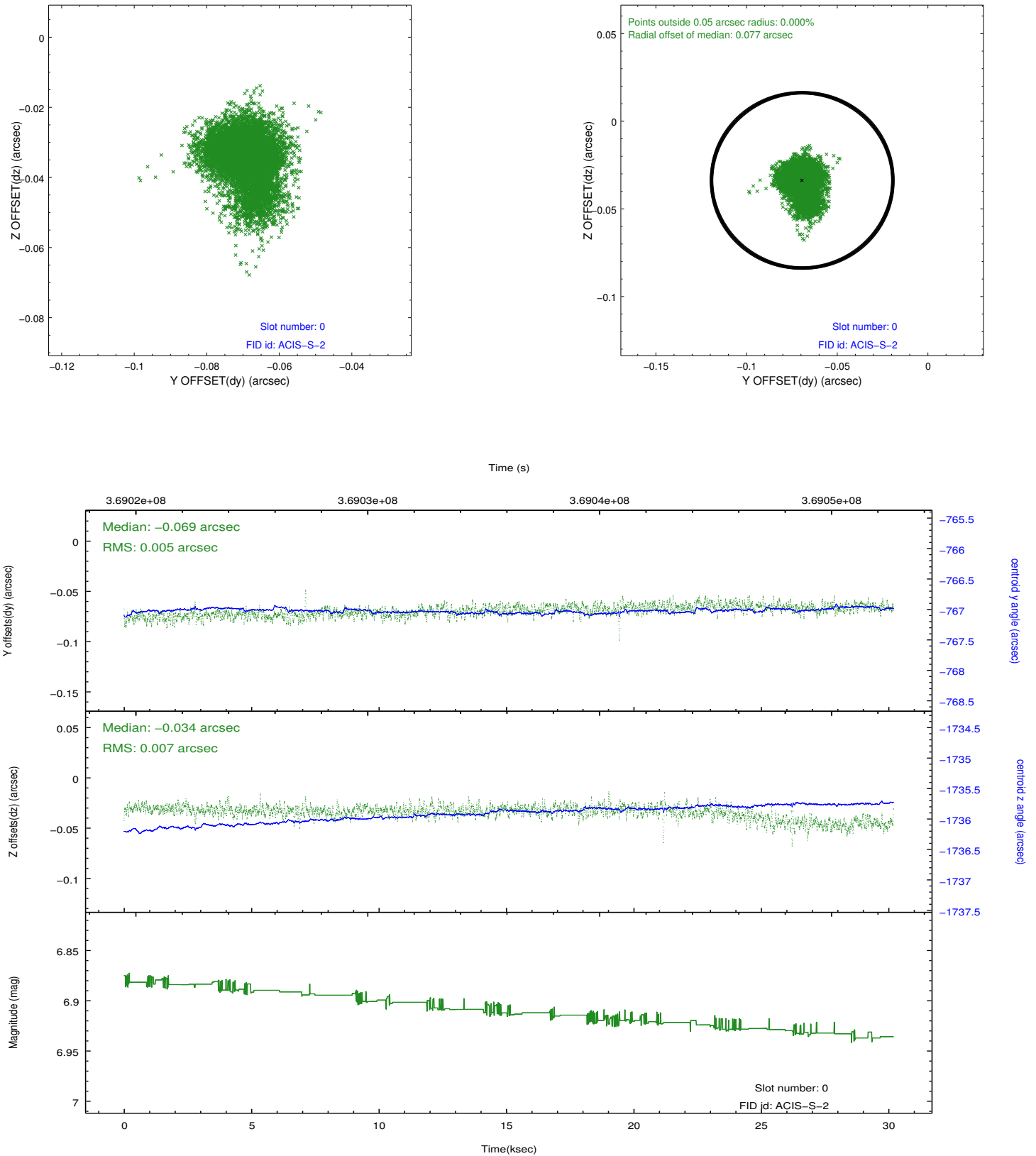


Time (s)

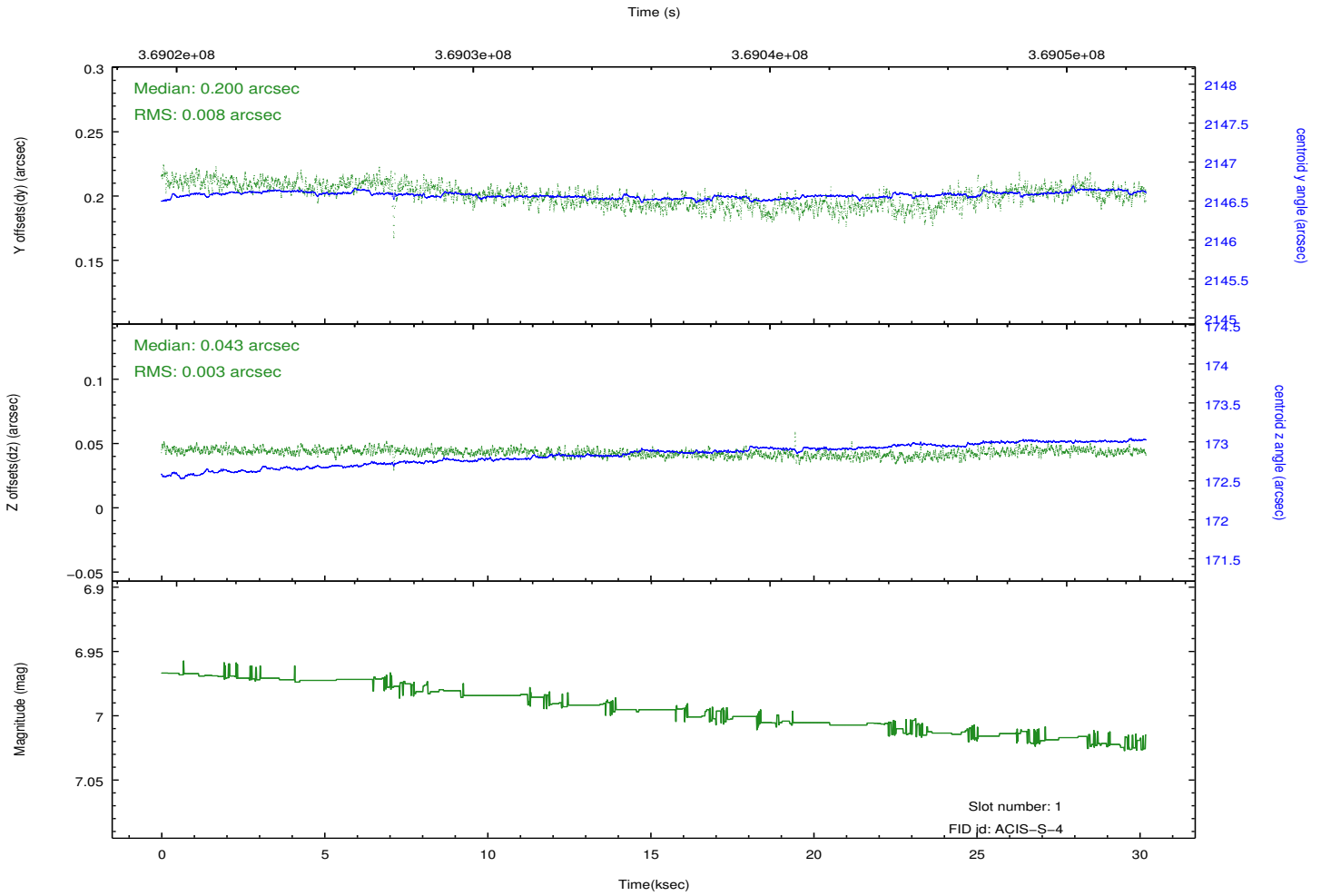
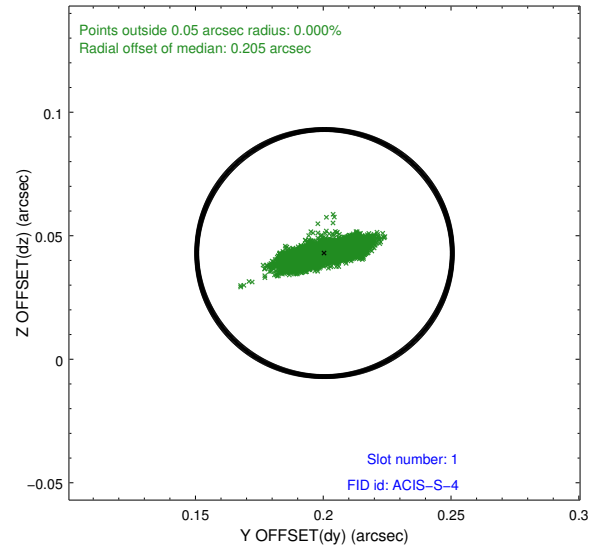
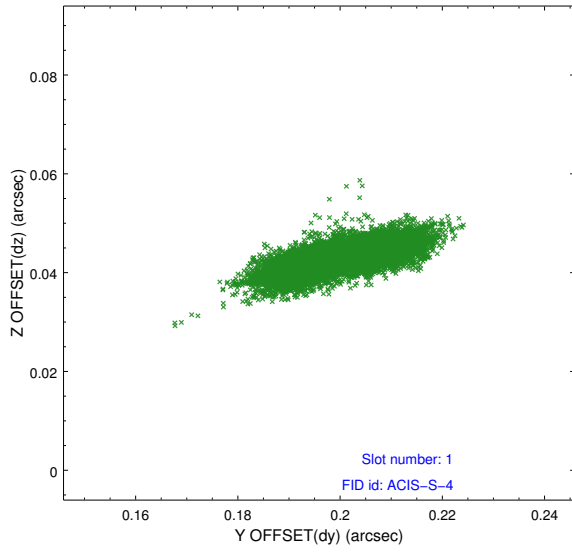


2.5 FID Slots

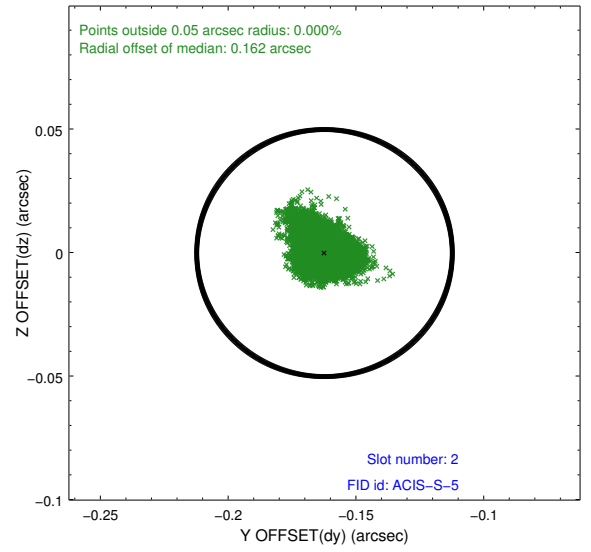
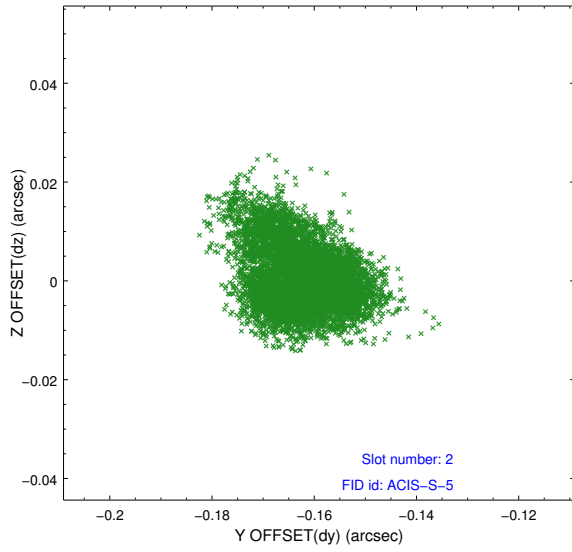
2.5.1 Slot 0



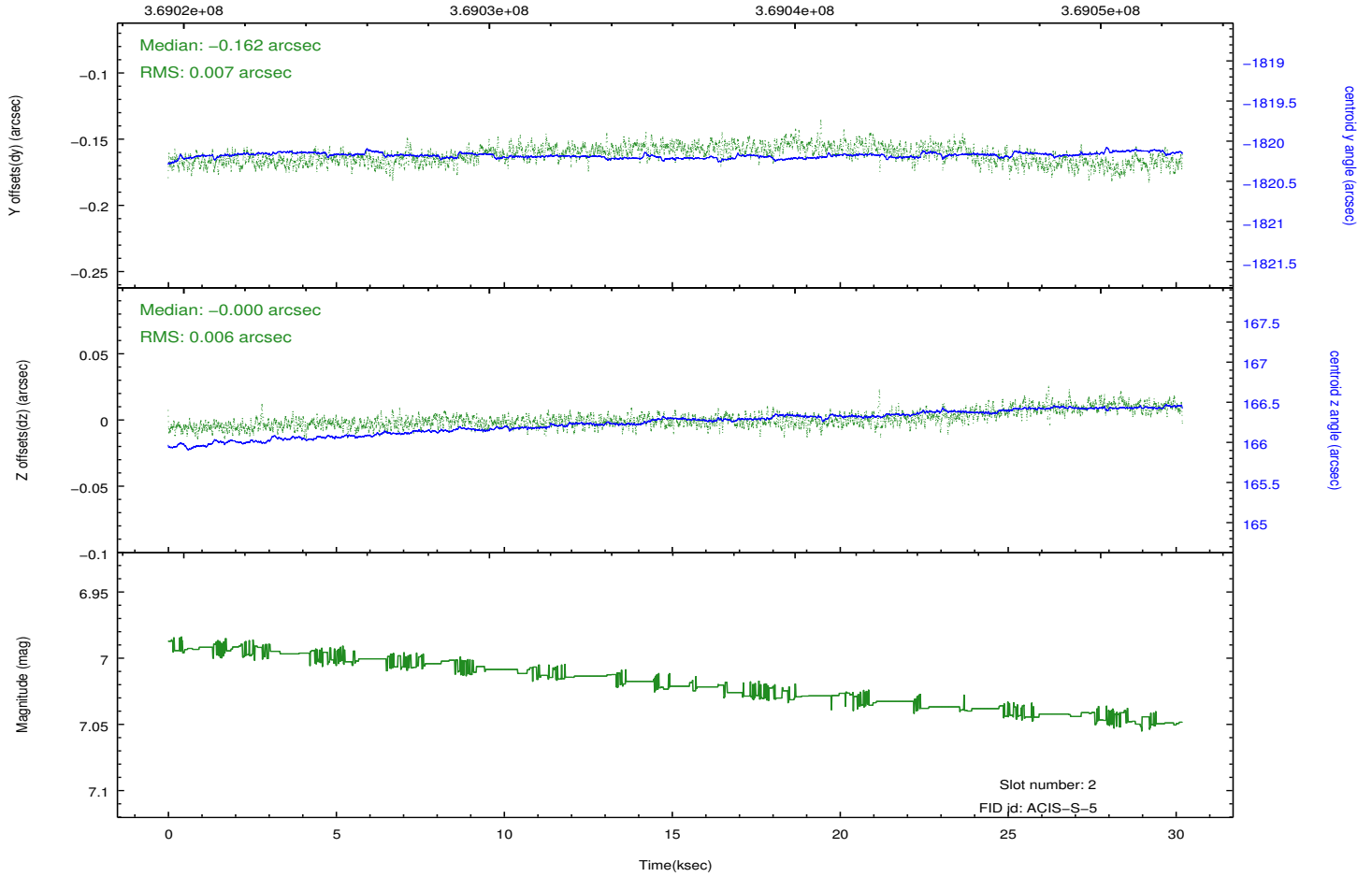
2.5.2 Slot 1



2.5.3 Slot 2



Time (s)



A Summary

A.1 Status

V&V Scientist	Jen Lauer
V&V Date (YYYY-MM-DD)	2012.06.18
V&V Edition	1
V&V Disposition and Status	OK
V&V Charge Time	29.036799891889

A.2 Comments

Joint proposal with NRAO.