

V&V Reference Report

L2 ASCDS Version : 8.4.5

Observation 11826 - L2 Version 2
Chandra X-Ray Center

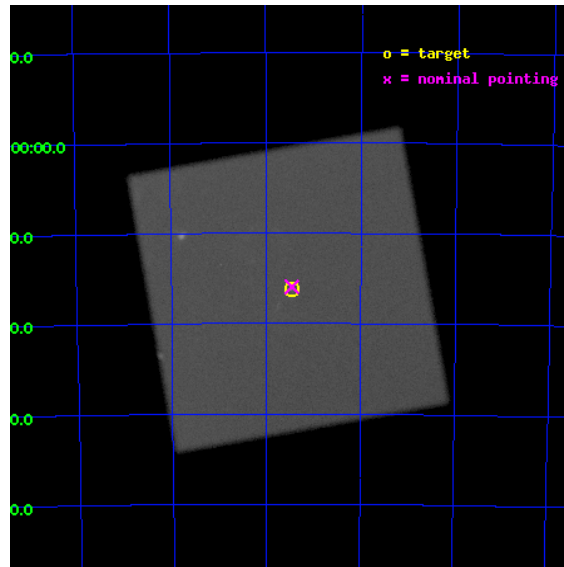
L2 Processing Date : Jul 1 2012

Contents

1	Front	2
2	OBI	3
2.1	OBI	3
2.1.1	Images	3
2.1.2	Parameters	4
2.1.3	Events	4
2.2	Compared Parameters	5
2.3	Aspect	6
2.4	Star Slots	9
2.4.1	Slot 3	9
2.4.2	Slot 4	10
2.4.3	Slot 5	11
2.4.4	Slot 6	12
2.4.5	Slot 7	13
2.5	FID Slots	14
2.5.1	Slot 0	14
2.5.2	Slot 1	15
2.5.3	Slot 2	16
A	Summary	17
A.1	Status	17
A.2	Comments	17

1 Front

seq_num	501343	Sequence number
obs_id	11826	Observation id
title	Imaging Supernova Remnant 1987A at the Highest Resolution	Proposal
observer	Dr. Stephen Murray	Principal investigator
object	SN 1987A	Source name
ra_targ	83.866667	Observer's specified target RA [deg]
dec_targ	-69.269778	Observer's specified target Dec [deg]
ra_nom	83.863957479232	Nominal RA [deg]
dec_nom	-69.265681458312	Nominal Dec [deg]
roll_nom	124.90197537075	Nominal Roll [deg]
revision	2	Processing version of data
ontime	34099.701746583	[s]
liveltime	33706.506504209	Ontime multiplied by DTCOR
l2events	2736439	Number of level 2 events

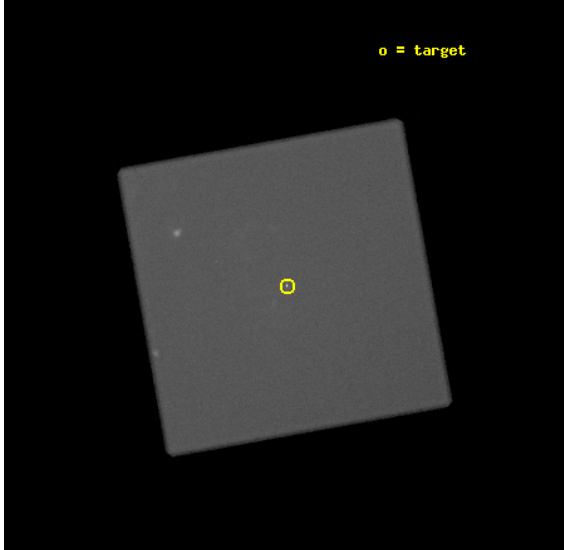


2 OBI

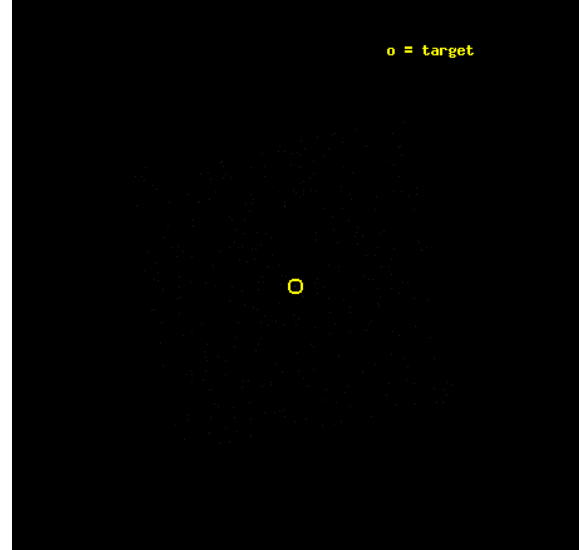
2.1 OBI

2.1.1 Images

Level 1 Image



Level 1 Bad Events



2.1.2 Parameters

obi_num	0	Obi number	sched_exp_time	34000.000000	[s] Scheduled observation exposure time
ascdsver	8.4.5	Processing system revision	ontime	34099.701746583	[s]
caldbver	4.5.0	 	l1events	3833416	Number of level 1 events
date	2012-07-01T18:53:10	Date and time of file creation			
revision	2	Processing version of data			

2.1.3 Events

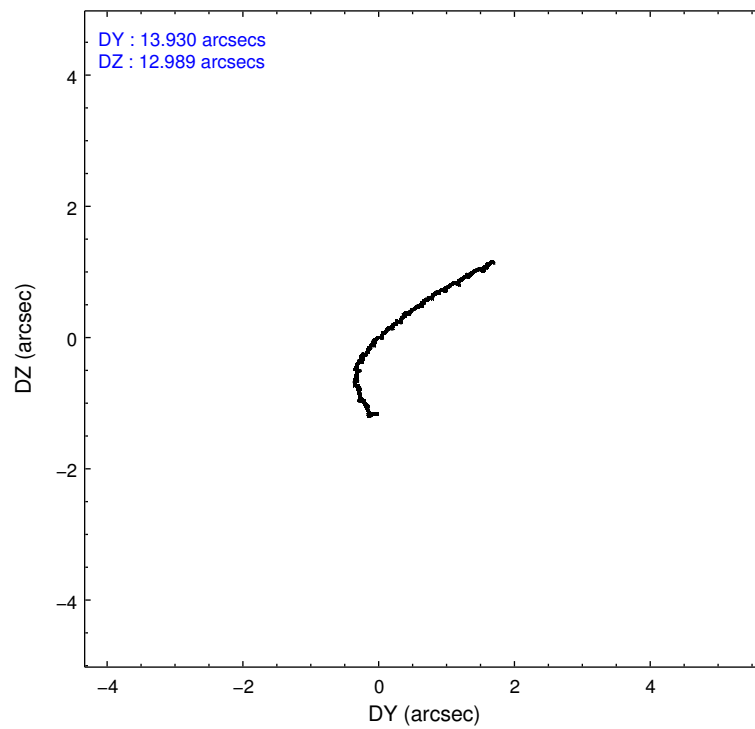
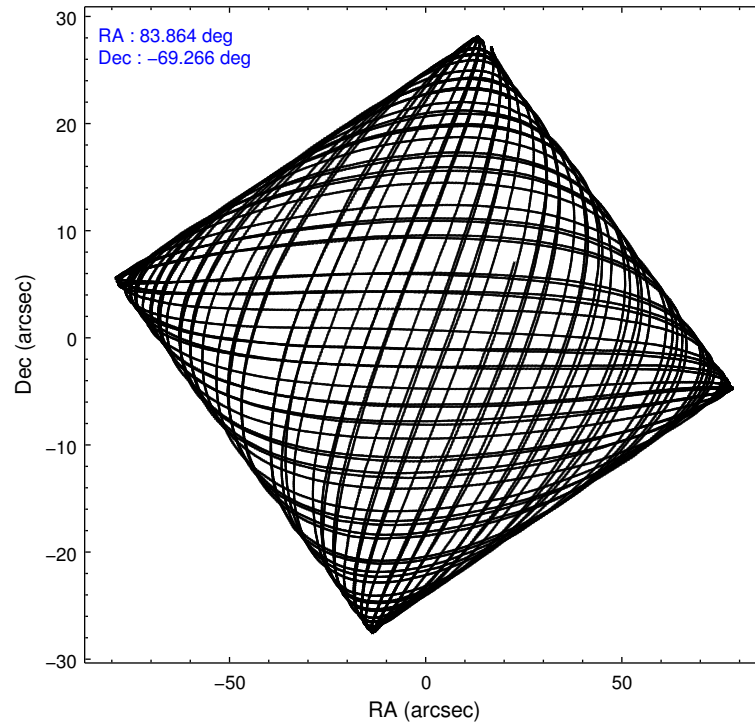
Level 1 Events

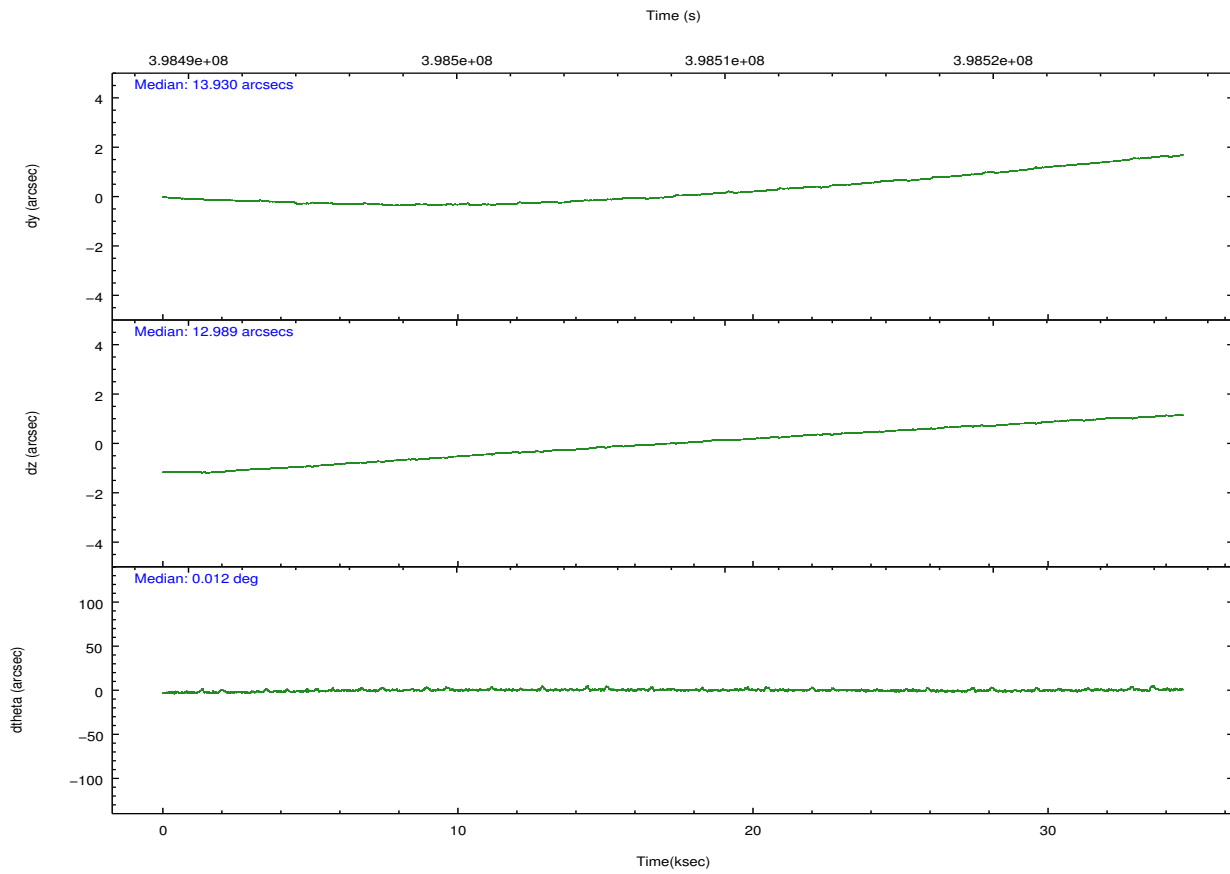
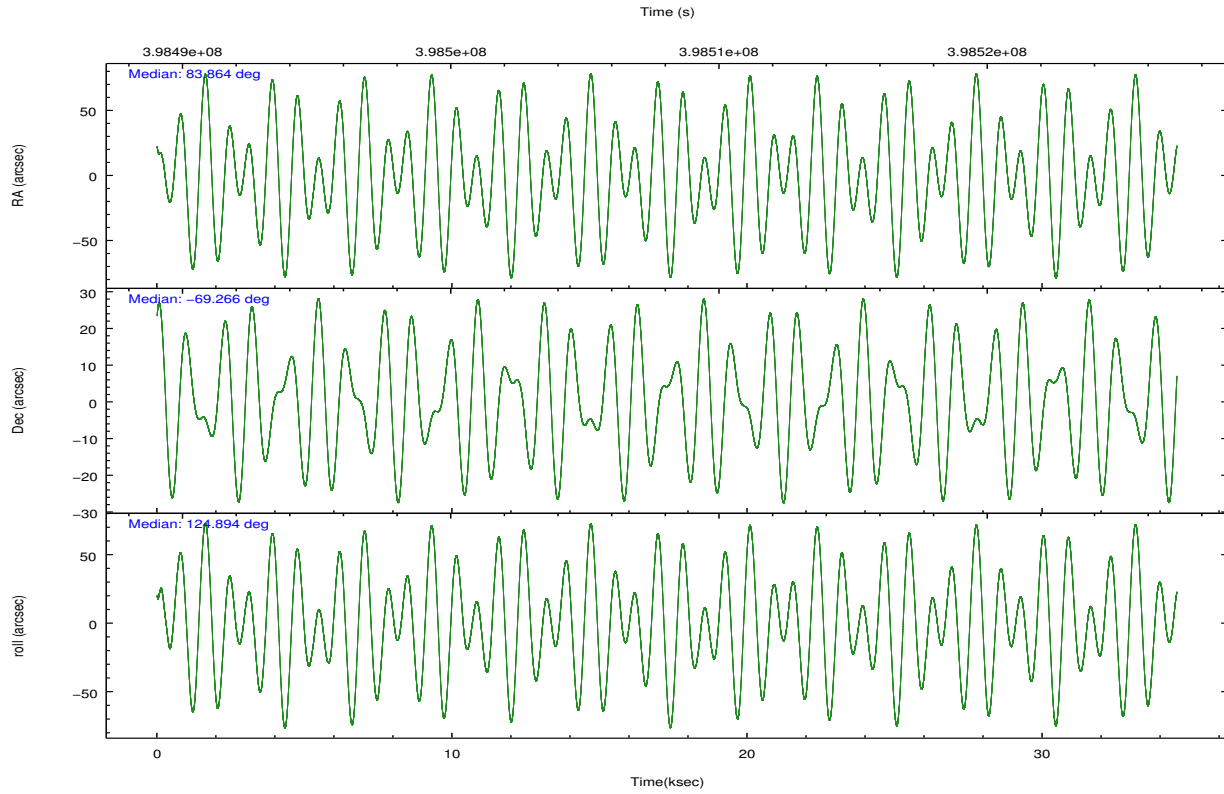
	segment 0
level 1 events	3833416
rejected events	6043
rejected %	0%

2.2 Compared Parameters

Parameter	Planned	Actual	Parameter	Planned	Actual
Instrument	HRC	HRC	Obspar format version number	7	7
Detector	HRC-I	HRC-I	Obspar file type	PREDICTED	ACTUAL
Grating	NONE	NONE	Obspar update status	NONE	UPDATED
Data mode	OBSERVING	OBSERVING			
Observation mode	POINTING	POINTING			
[deg] Pointing RA	83.934265	83.86395747923184			
[deg] Pointing Dec	-69.276622	-69.265681458312			
[deg] Pointing Roll	125.063224	124.9019753707501			
[mm] SIM focus pos	-1.040293	-1.038866356238299			
[mm] SIM defocus	0	0.001426264420575141			
[mm] SIM translation stage pos	126.985494	126.9854943052878			
[mm] SIM translation stage offset	0	-5.413686238853188e-06			
[s] Observation start time (MET)	398491355.184000	398489986.4313			
Observation start date	2010-08-18T04:01:29	2010-08-18T03:39:46			
[s] Observation end time (MET)	398525355.184000	398526793.67068			
Observation end date	2010-08-18T13:28:09	2010-08-18T13:53:13			

2.3 Aspect





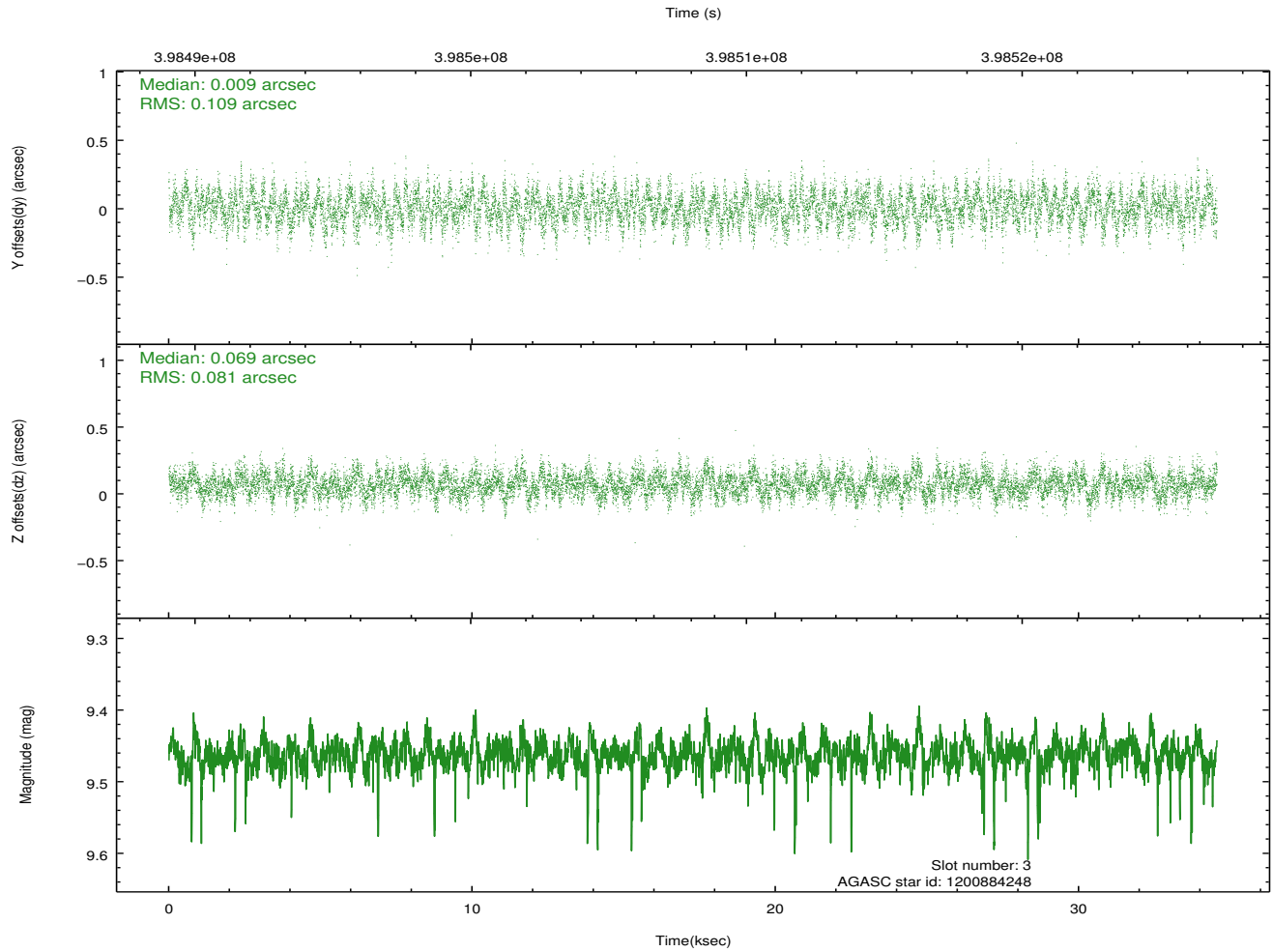
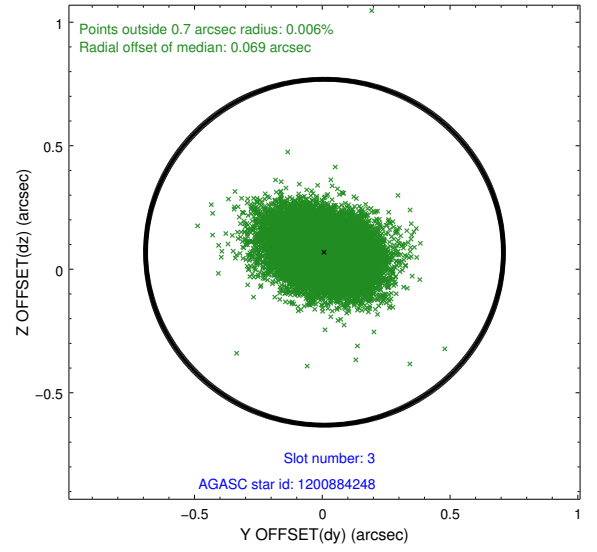
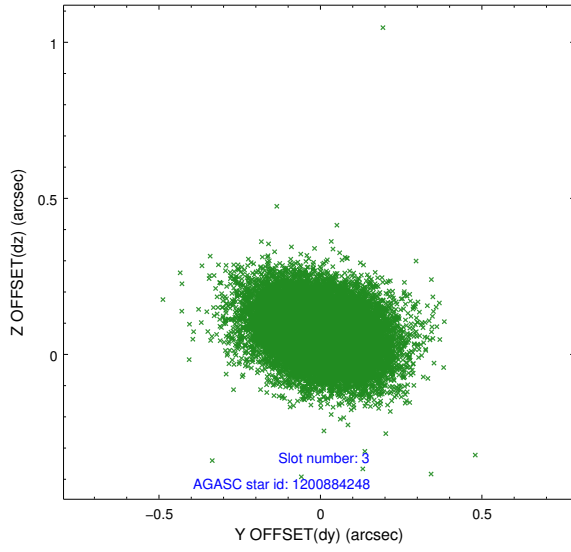
Slot Statistics

slot	status	id	mag	n_pts	med_dy	med_dz	dr1	dr2	ra	dec	mean_y	mean_z
0	FID	HRC-I-1	6.98	8429	-0.113	0.010	0.020	0.037	0.000000	0.000000	-770.19	-1300.99
1	FID	HRC-I-2	7.02	8429	0.216	-0.098	0.017	0.045	0.000000	0.000000	842.67	-1302.91
2	FID	HRC-I-4	6.99	8430	0.012	-0.007	0.018	0.031	0.000000	0.000000	1272.97	1000.89
3	GUIDE	1200884248	9.46	16797	0.009	0.069	0.143	0.234	83.880915	-68.565170	2137.45	-1413.80
4	GUIDE	1200885760	9.46	16812	-0.060	0.036	0.124	0.203	83.723637	-68.777667	1628.03	-806.67
5	GUIDE	1201017288	9.72	16709	-0.041	0.054	0.165	0.276	84.358094	-68.728983	1294.76	-1584.26
6	GUIDE	1201019200	9.46	16770	-0.053	-0.039	0.124	0.204	84.213591	-68.777384	1261.98	-1329.80
7	GUIDE	1201406992	9.27	16761	0.143	-0.110	0.134	0.231	83.682859	-69.471866	-392.87	663.91

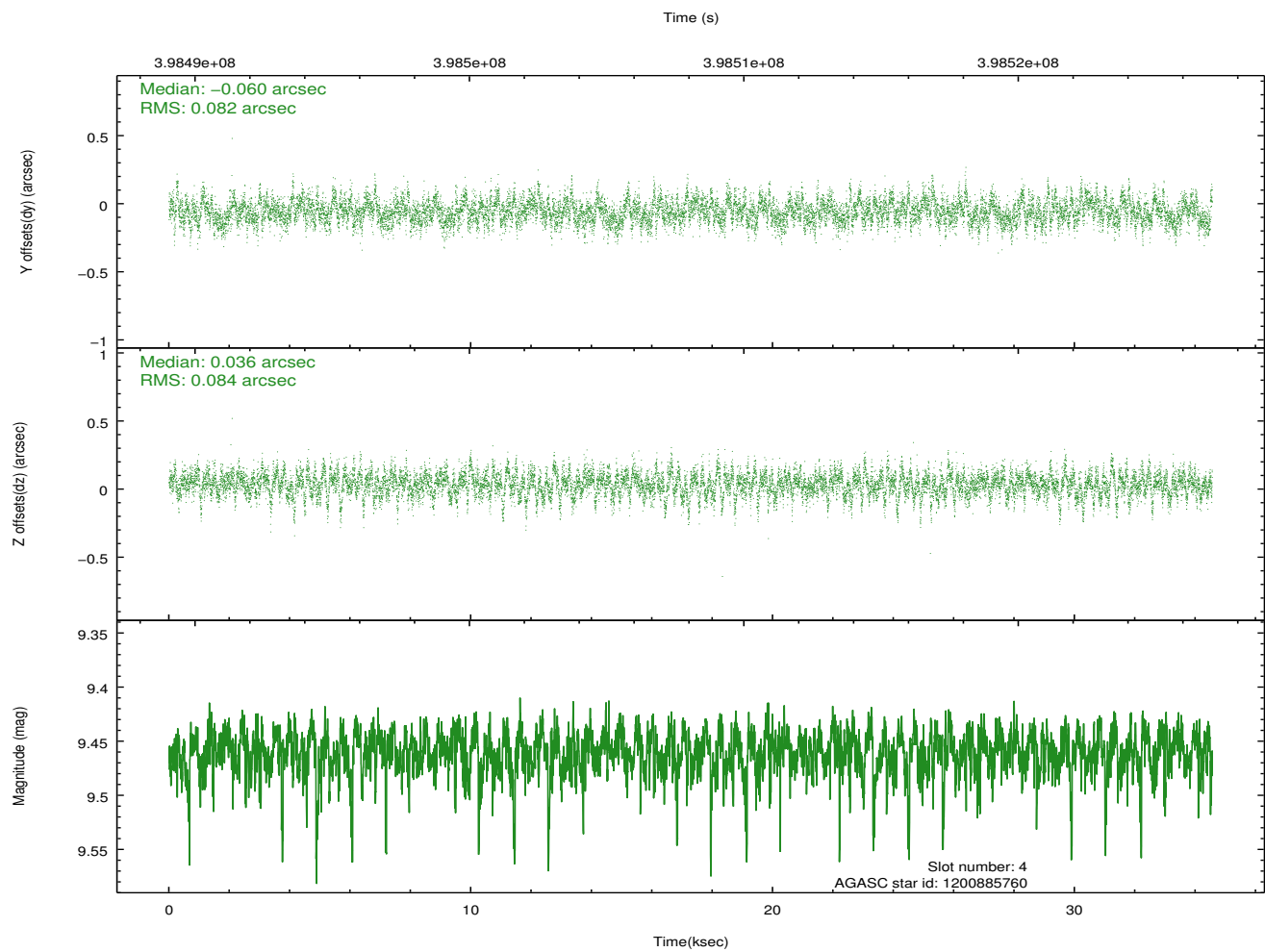
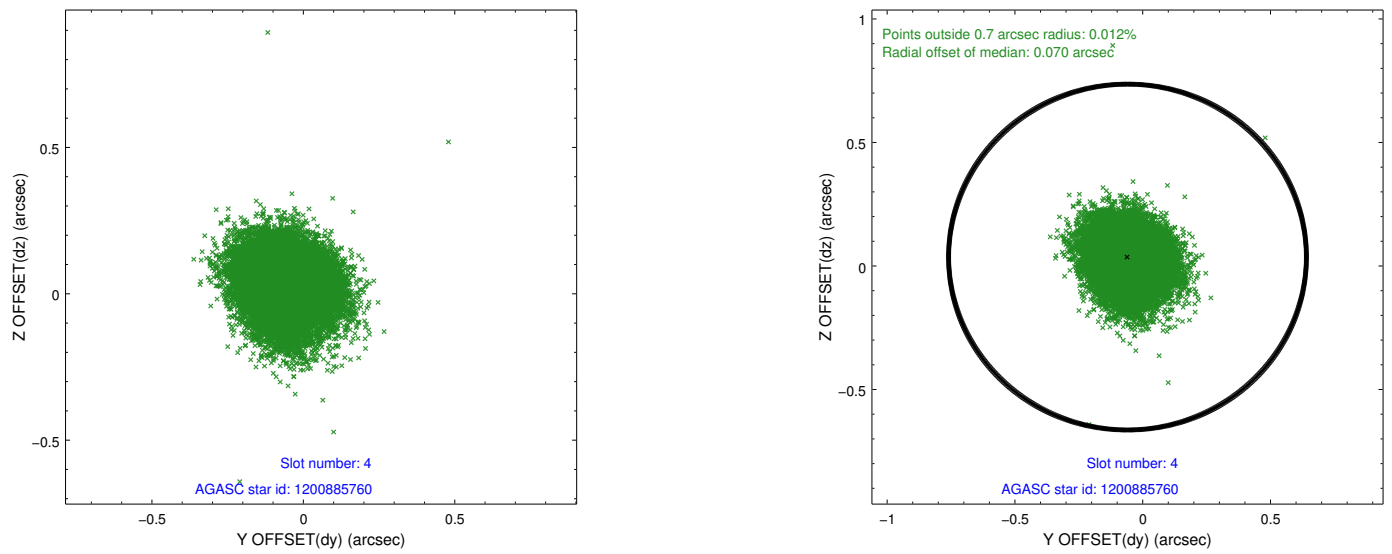
∞

2.4 Star Slots

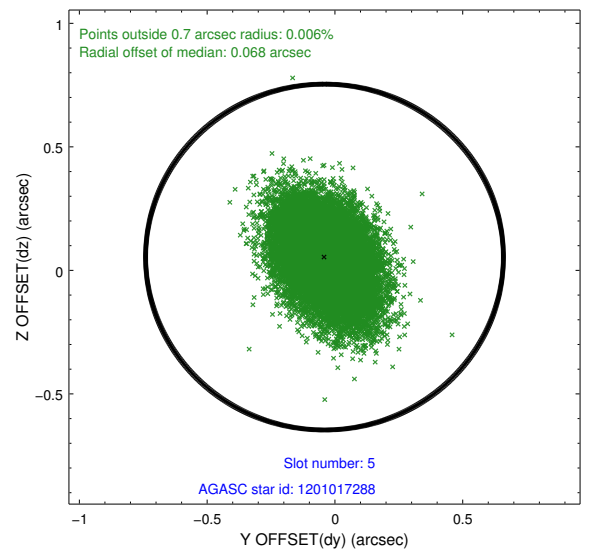
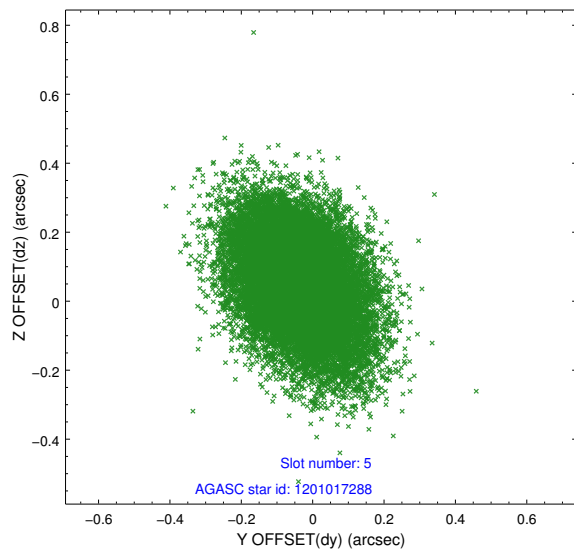
2.4.1 Slot 3



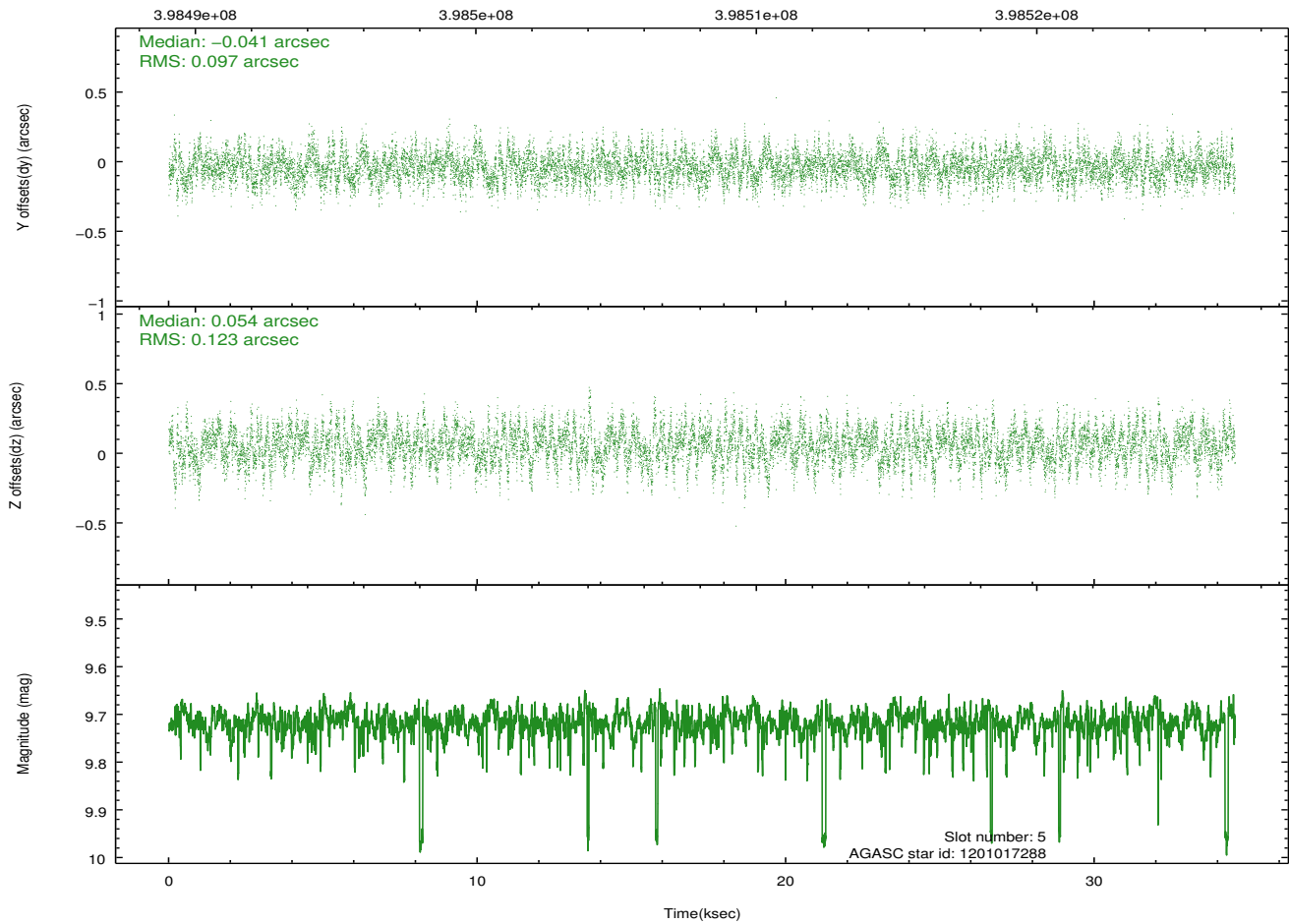
2.4.2 Slot 4



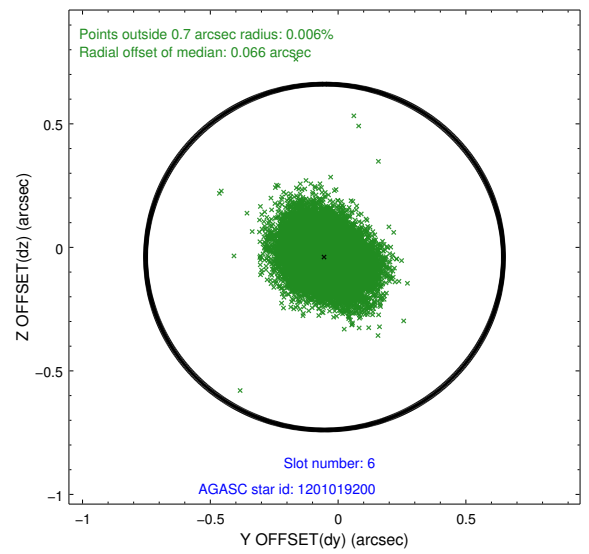
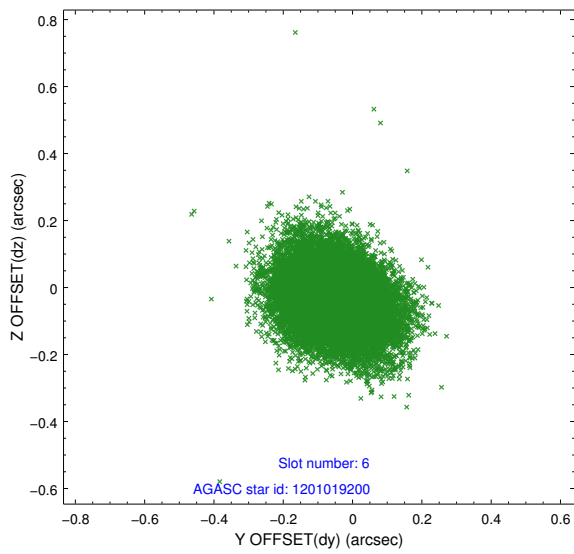
2.4.3 Slot 5



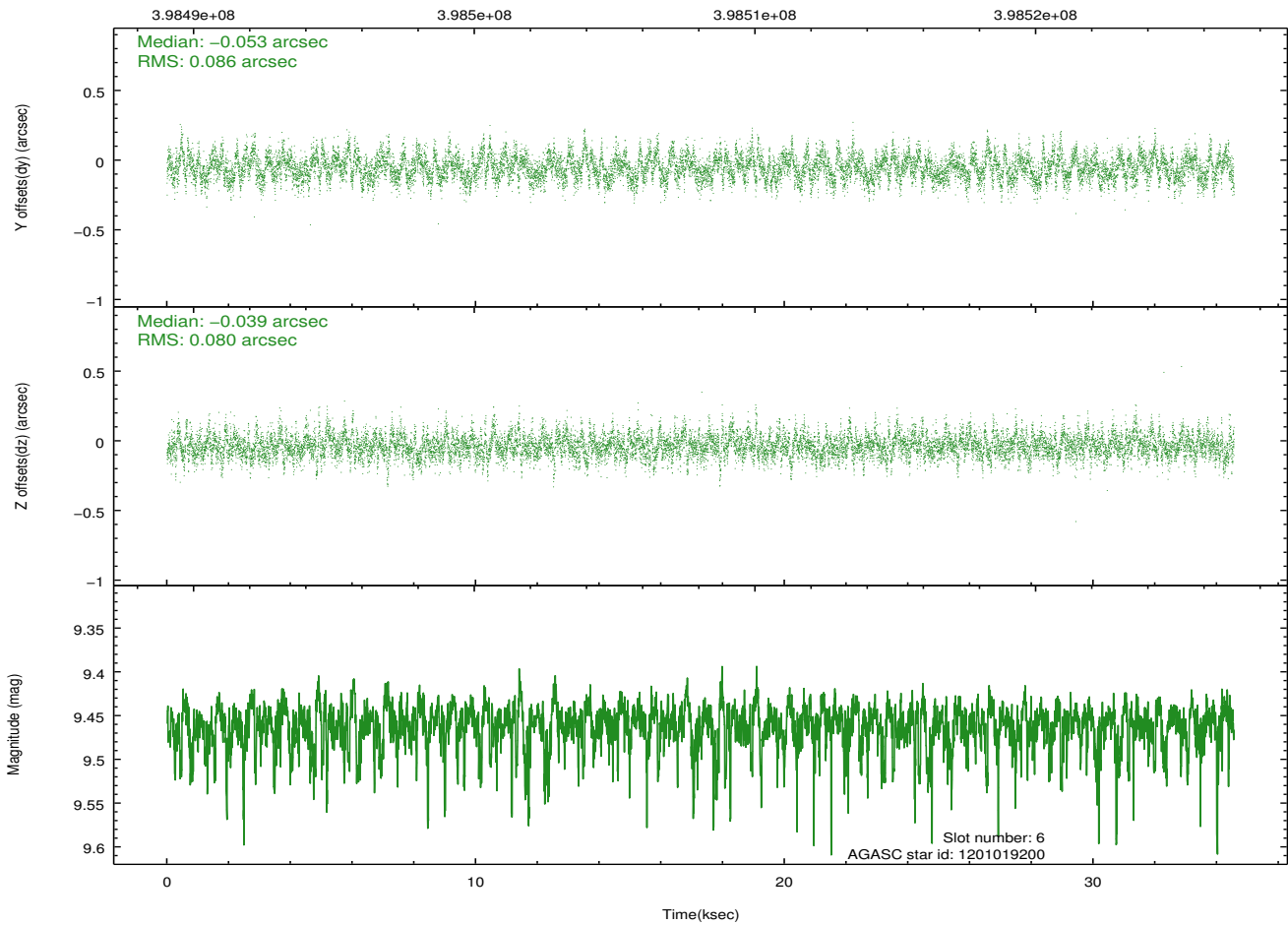
Time (s)



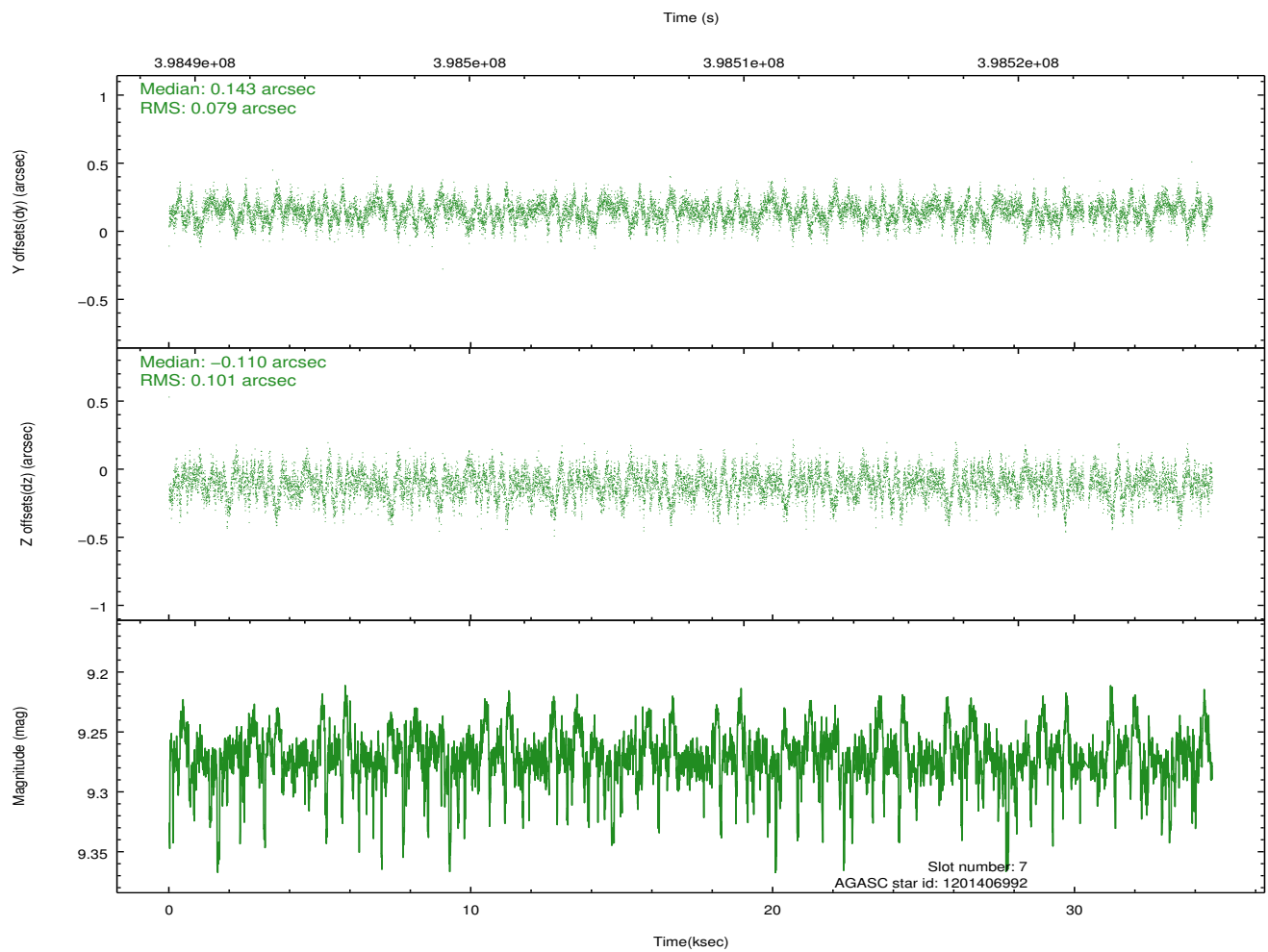
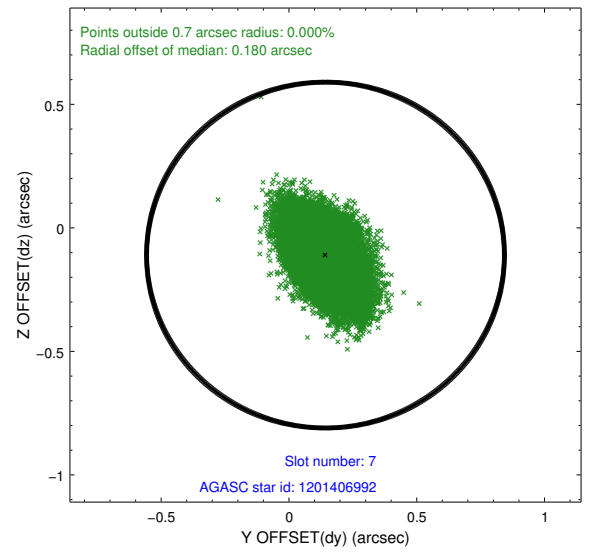
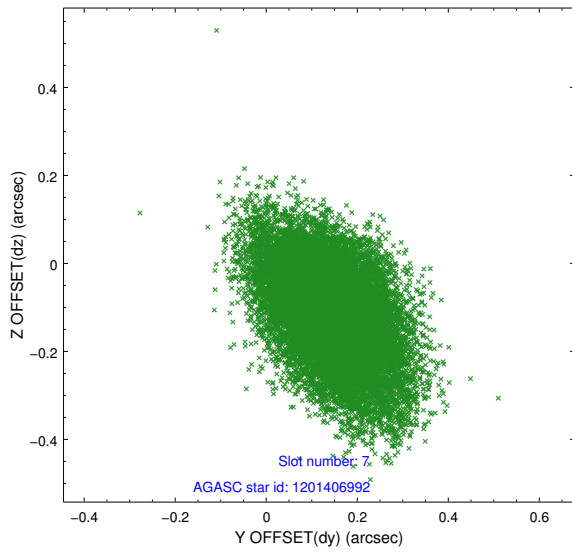
2.4.4 Slot 6



Time (s)

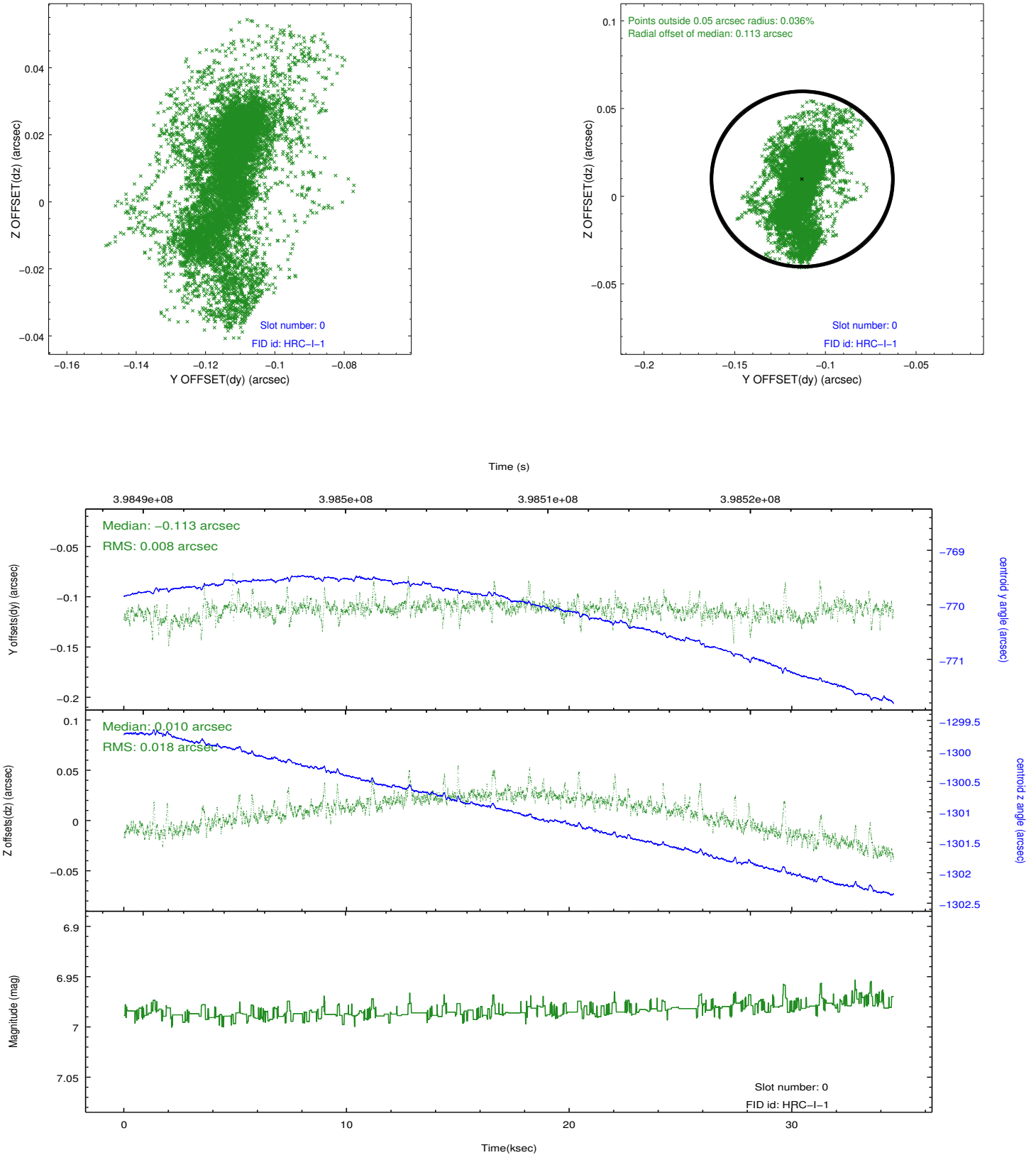


2.4.5 Slot 7

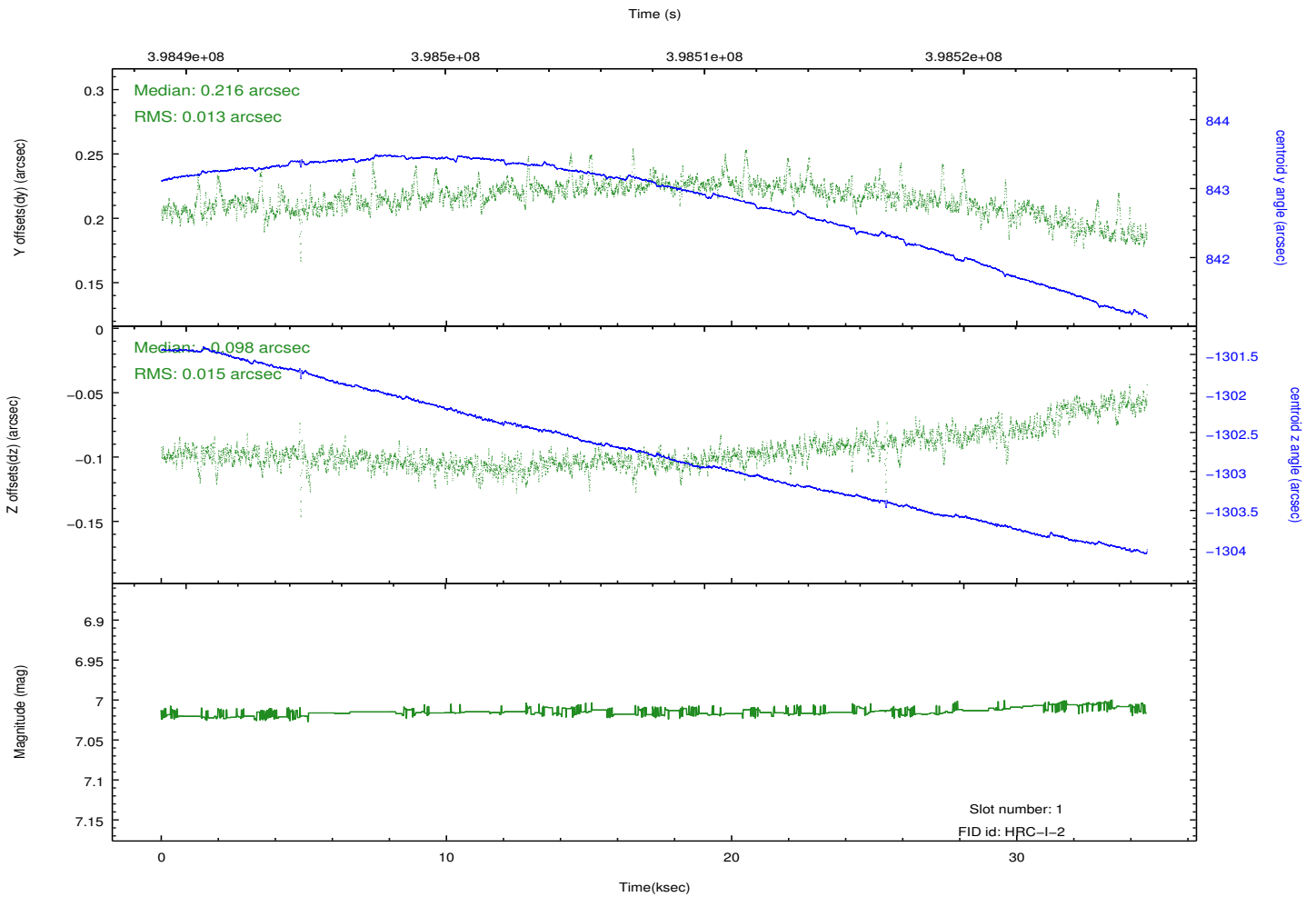
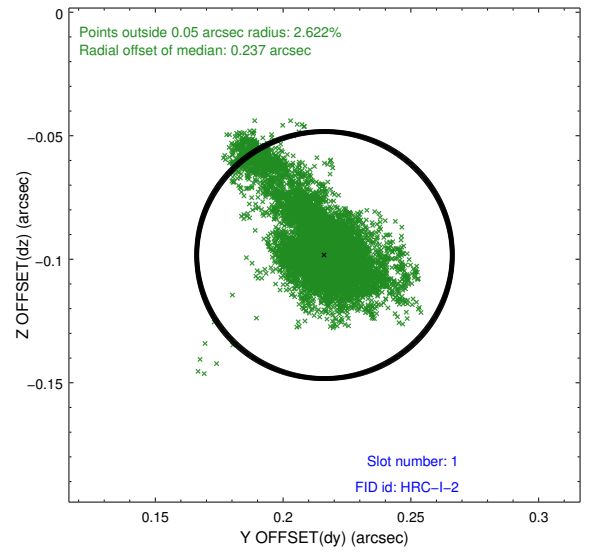
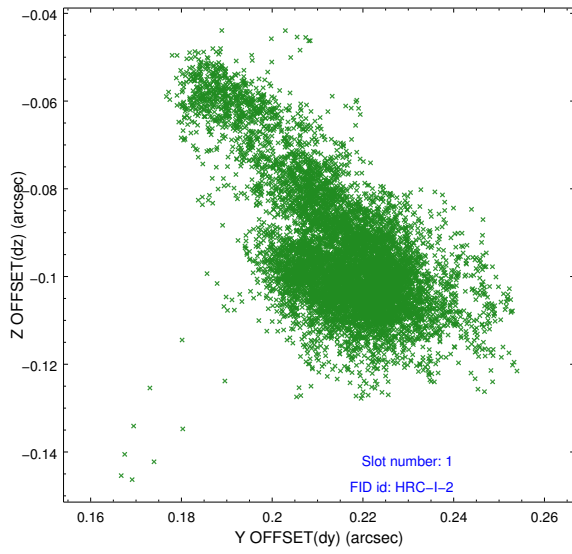


2.5 FID Slots

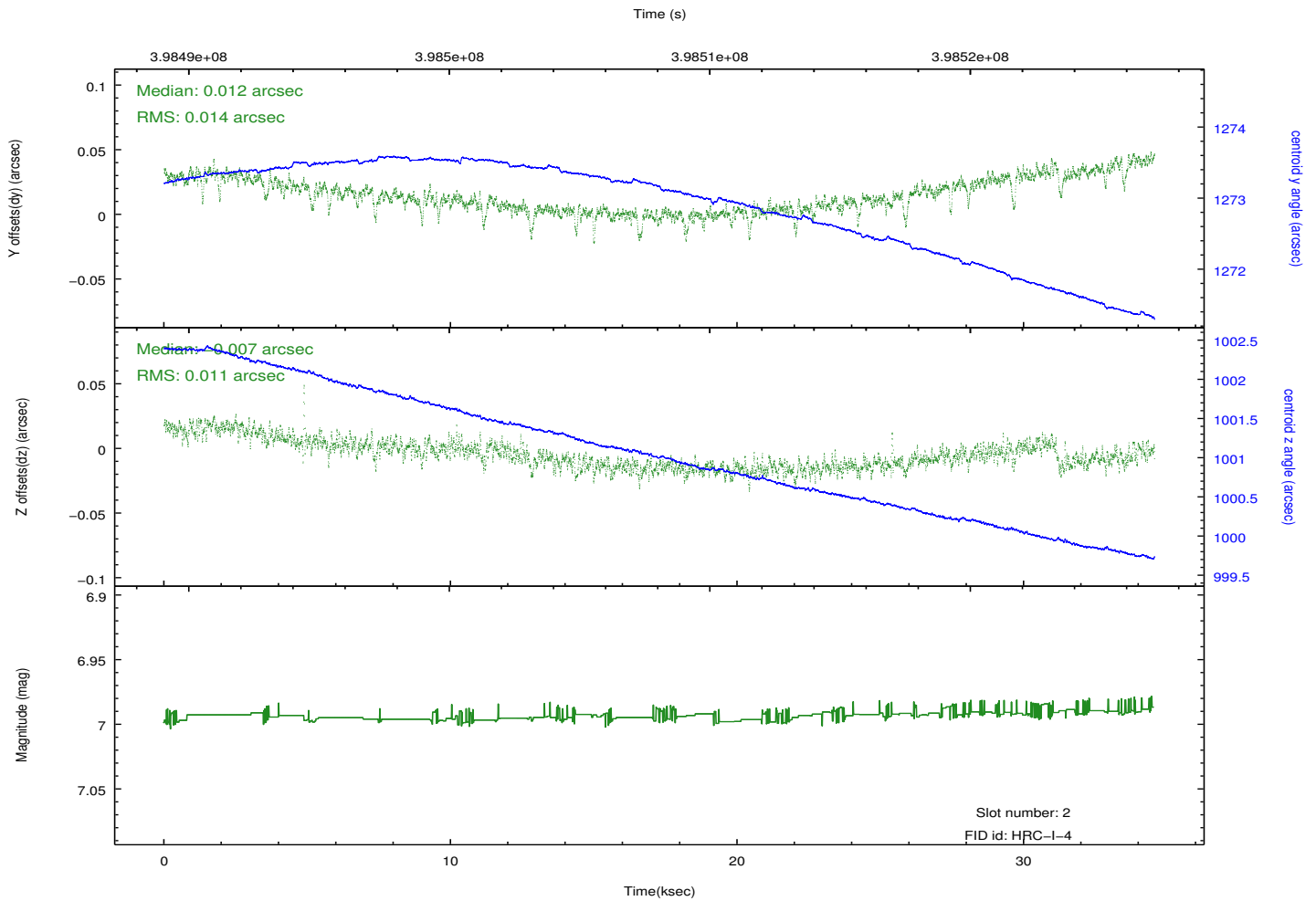
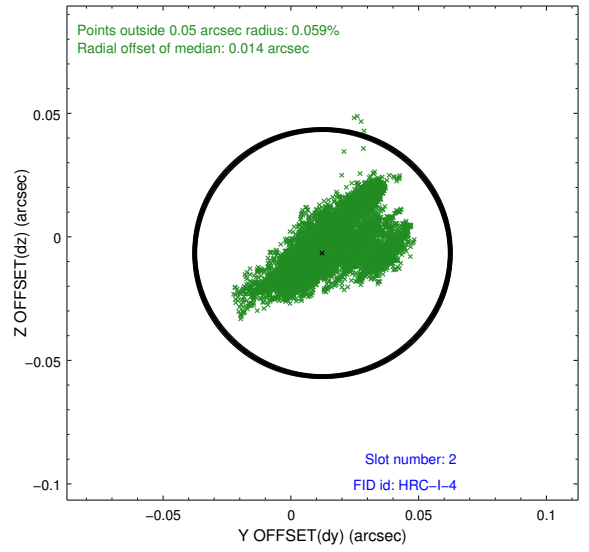
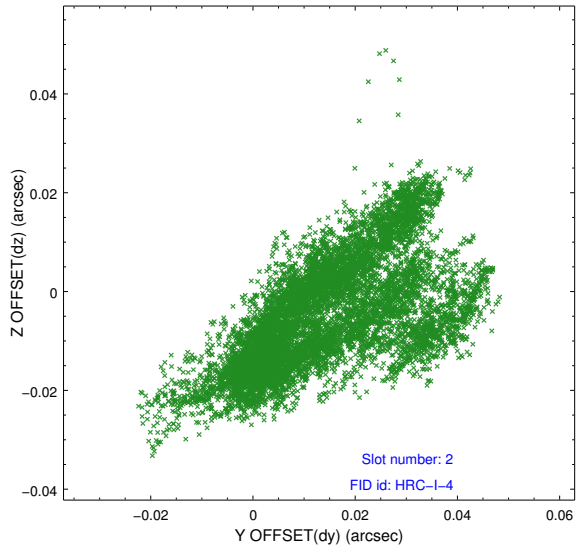
2.5.1 Slot 0



2.5.2 Slot 1



2.5.3 Slot 2



A Summary

A.1 Status

V&V Scientist	Beth Sundheim
V&V Date (YYYY-MM-DD)	2012.07.10
V&V Edition	1
V&V Disposition and Status	OK
V&V Charge Time	34.099701746583

A.2 Comments