

V&V Reference Report

L2 ASCDS Version : 8.4.5

Observation 11876 - L2 Version 2
Chandra X-Ray Center

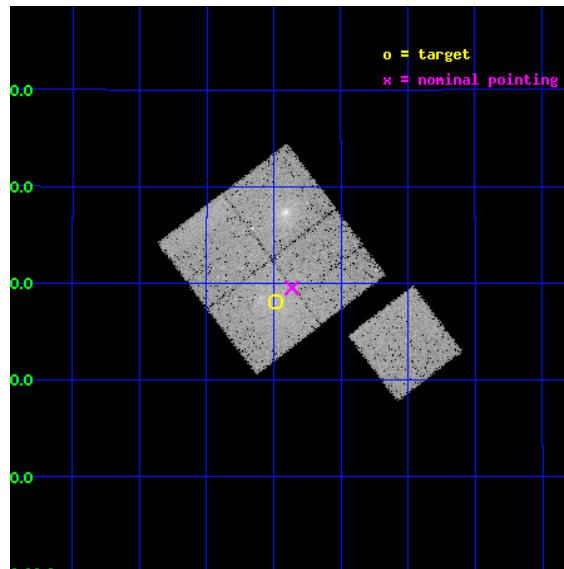
L2 Processing Date : Jun 13 2012

Contents

1	Front	2
2	OBI	3
2.1	OBI	3
2.1.1	Images	3
2.1.2	Bias	3
2.1.3	Parameters	4
2.1.4	Events	4
2.2	Compared Parameters	5
2.3	Aspect	6
2.4	Star Slots	9
2.4.1	Slot 3	9
2.4.2	Slot 4	10
2.4.3	Slot 5	11
2.4.4	Slot 6	12
2.4.5	Slot 7	13
2.5	FID Slots	14
2.5.1	Slot 0	14
2.5.2	Slot 1	15
2.5.3	Slot 2	16
A	Summary	17
A.1	Status	17
A.2	Comments	17

1 Front

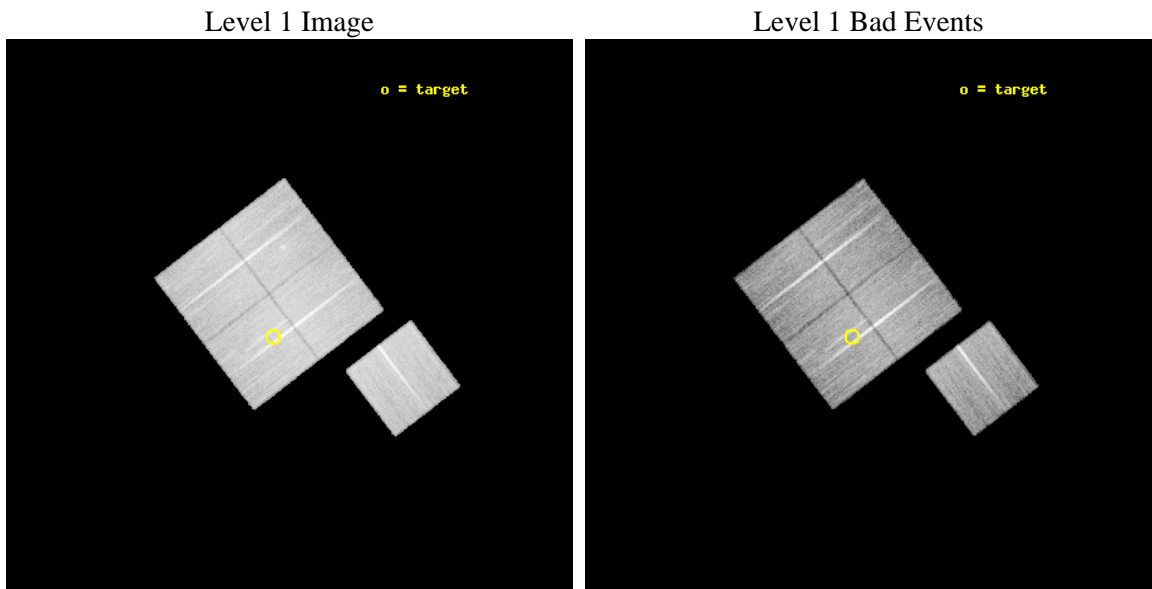
seq_num	800930	Sequence number
obs_id	11876	Observation id
title	Chandra Observations of the Merging Clusters A98 and A1750	Proposa
observer	Dr. Stephen Murray	Principal investigator
object	A98s	Source name
dtycle	0	
cycle	P	events from which exps? Prim/Second/Both
ra_targ	11.622083	Observer's specified target RA [deg]
dec_targ	20.468056	Observer's specified target Dec [deg]
ra_nom	11.591250383575	Nominal RA [deg]
dec_nom	20.492408448574	Nominal Dec [deg]
roll_nom	142.70070923111	Nominal Roll [deg]
revision	2	Processing version of data
ontime	20041.013767958	Sum of GTIs [s]
livetime	19779.1631691	Livetime [s]
ontime0	20037.749647439	Sum of GTIs [s]
ontime1	20037.790677488	Sum of GTIs [s]
ontime2	20040.972727895	Sum of GTIs [s]
ontime3	20041.013767958	Sum of GTIs [s]
ontime6	20040.849597991	Sum of GTIs [s]
l2events	84653	Number of level 2 events



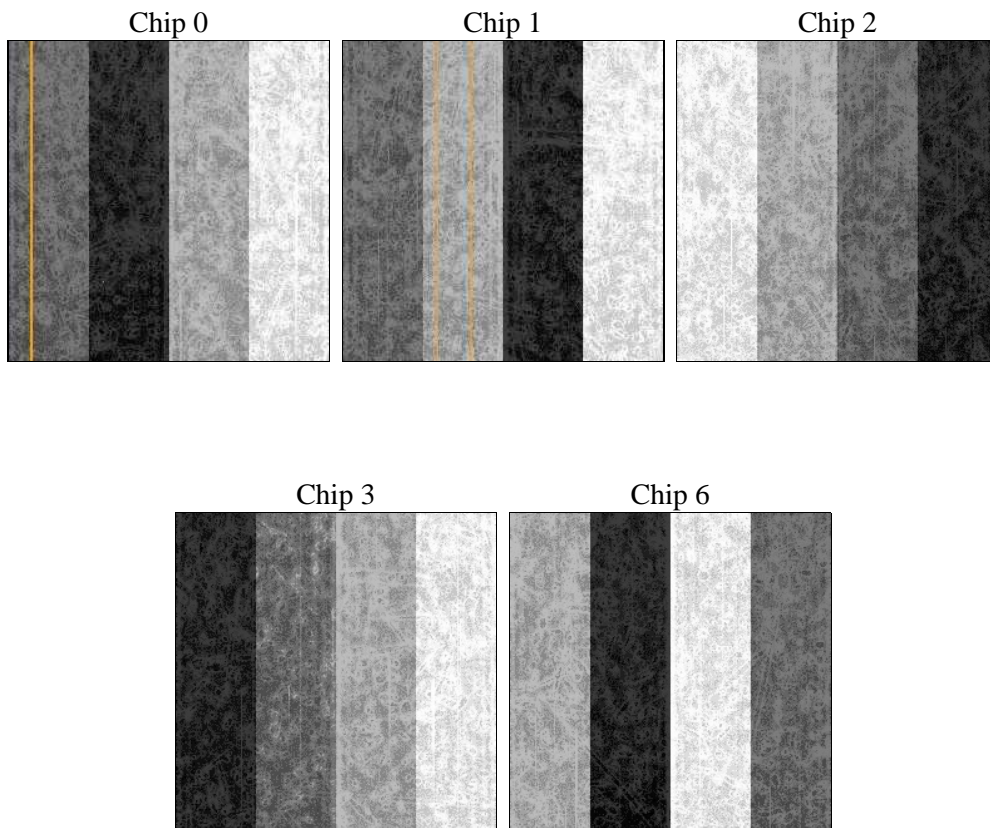
2 OBI

2.1 OBI

2.1.1 Images



2.1.2 Bias



2.1.3 Parameters

obi_num	0	Obi number	sched_exp_time	20000.000000	[s] Scheduled observation exposure time
ascdsver	8.4.5	Processing system revision	ontime	20041.013767958	Sum of GTIs [s]
caldbver	4.4.10	 	ontime0	20037.749647439	Sum of GTIs [s]
date	2012-06-13T19:27:58	Date and time of file creation	ontime1	20037.790677488	Sum of GTIs [s]
revision	2	Processing version of data	ontime2	20040.972727895	Sum of GTIs [s]
			ontime3	20041.013767958	Sum of GTIs [s]
			ontime6	20040.849597991	Sum of GTIs [s]
			l1events	866944	Number of level 1 events

2.1.4 Events

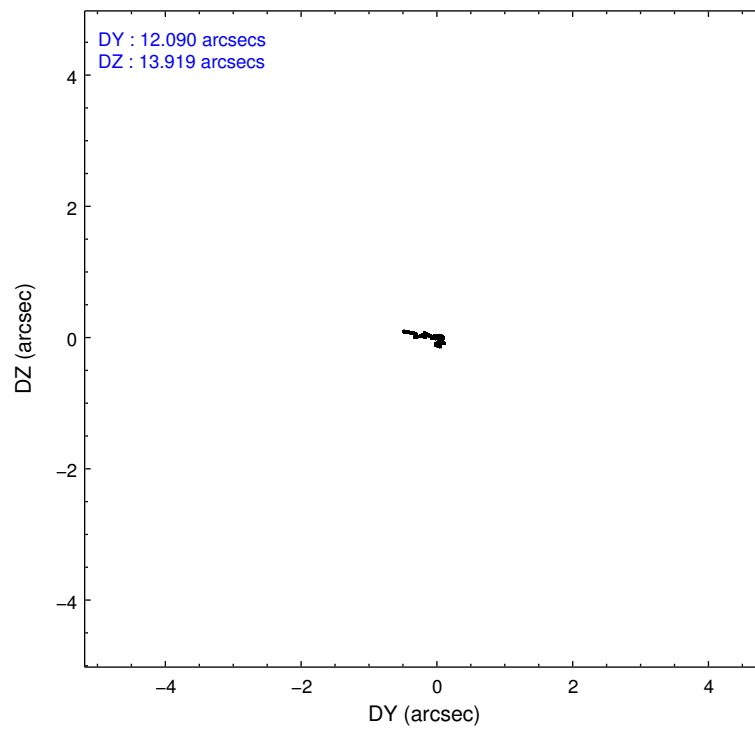
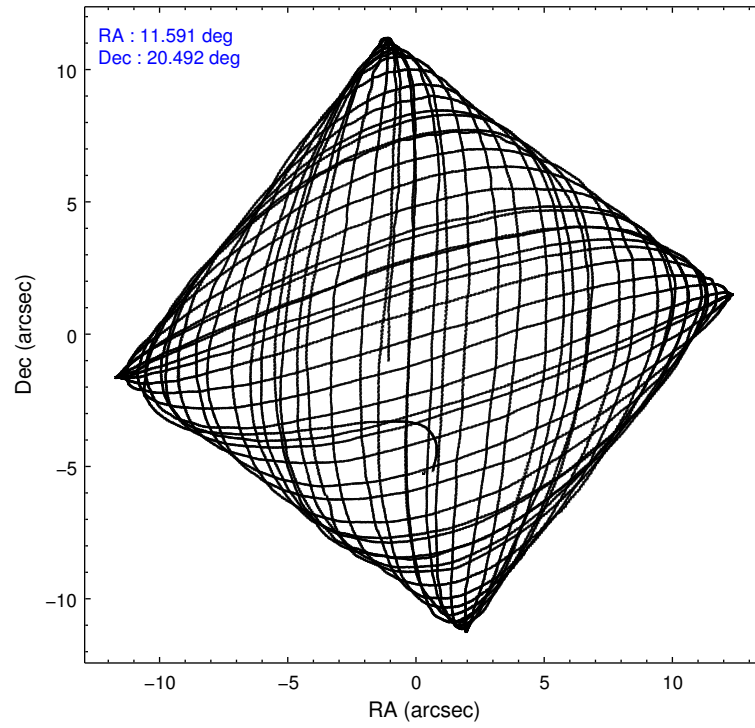
	ccd 0	ccd 1	ccd 2	ccd 3	ccd 6
level 1 events	165857	163500	185060	181677	170850
rejected events	143323	143071	166373	160811	153207
rejected %	86%	87%	89%	88%	89%

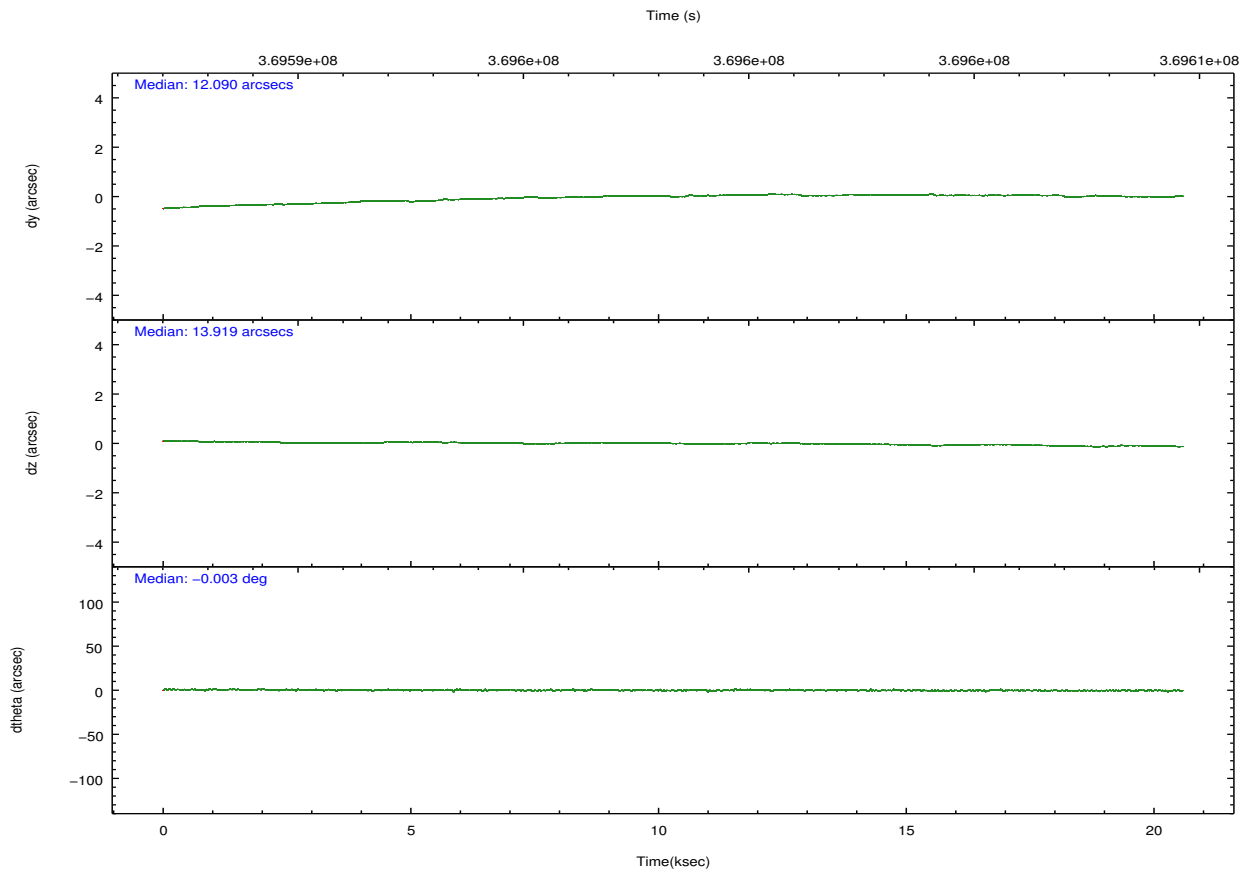
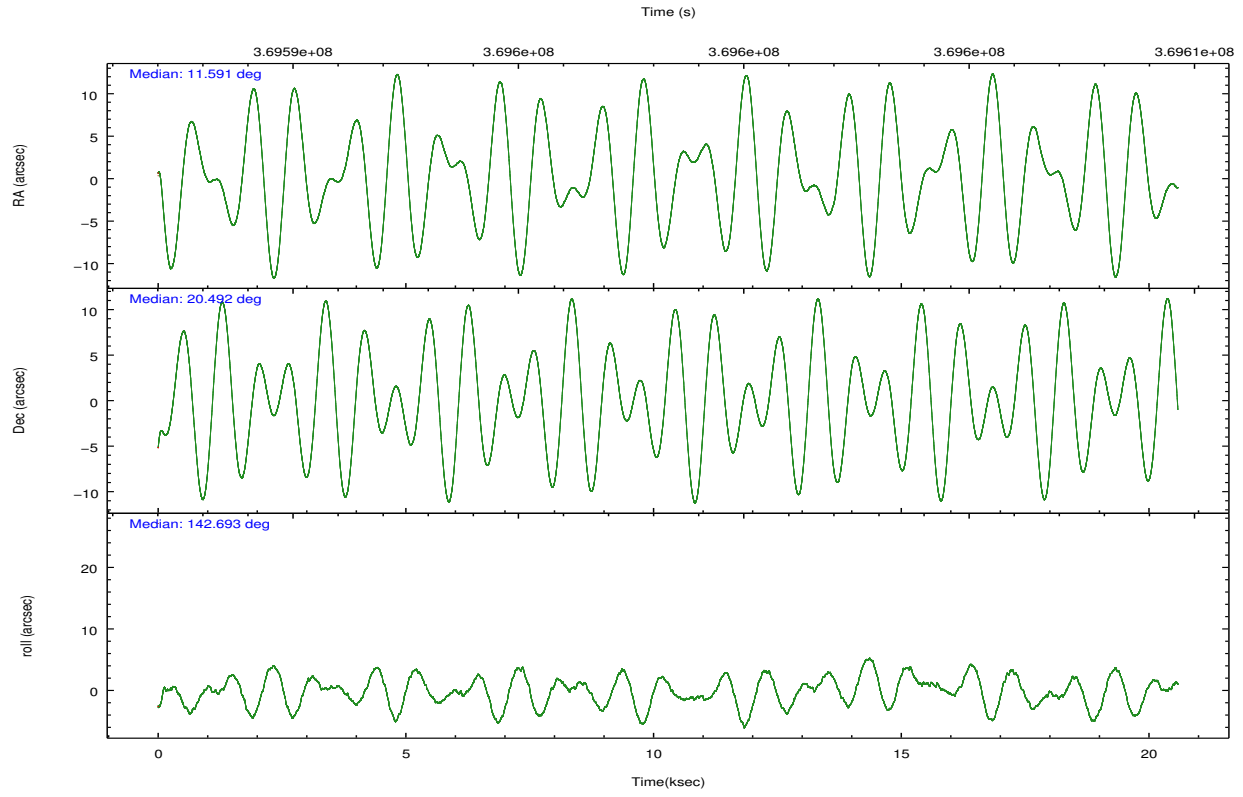
	ccd 0	ccd 1	ccd 2	ccd 3	ccd 6
grade 0 events	10243	7570	7278	9168	6260
	6%	4%	3%	5%	3%
grade 1 events	102	94	113	120	89
	0%	0%	0%	0%	0%
grade 2 events	4805	4648	4407	4181	3831
	2%	2%	2%	2%	2%
grade 3 events	1997	2155	1792	1914	1876
	1%	1%	0%	1%	1%
grade 4 events	1984	2028	1896	2004	1809
	1%	1%	1%	1%	1%
grade 5 events	6426	7003	5981	7522	7086
	3%	4%	3%	4%	4%
grade 6 events	3512	4037	3319	3608	3868
	2%	2%	1%	1%	2%
grade 7 events	136788	135965	160274	153160	146031
	82%	83%	86%	84%	85%

2.2 Compared Parameters

Parameter	Planned	Actual	Parameter	Planned	Actual
Instrument	ACIS	ACIS	Obspar format version number	7	7
Detector	ACIS-01236	ACIS-01236	Obspar file type	PREDICTED	ACTUAL
Grating	NONE	NONE	Obspar update status	NONE	UPDATED
Data mode	VFAINT	VFAINT	Number of optional ACIS chips dropped	0	0
Observation mode	POINTING	POINTING	On-chip summing requested	N	N
[deg] Pointing RA	11.620412	11.59125038357523	Subarray requested	NONE	NONE
[deg] Pointing Dec	20.489013	20.49240844857368	Alternating exposures requested	N	N
[deg] Pointing Roll	142.481817	142.7007092311139	[s] Primary exposure time	0.000000	3.1
[mm] SIM focus pos	-0.782348	-0.7809083437167272			
[mm] SIM defocus	0	0.001439871863259334			
[mm] SIM translation stage pos	-224.817463	-224.820017004289			
[mm] SIM translation stage offset	-8.775	-8.772435998640731			
[s] Observation start time (MET)	369588616.184000	369587493.14043			
Observation start date	2009-09-17T15:29:10	2009-09-17T15:11:33			
[s] Observation end time (MET)	369608616.184000	369608750.104			
Observation end date	2009-09-17T21:02:30	2009-09-17T21:05:50			
Read mode	TIMED	TIMED			

2.3 Aspect



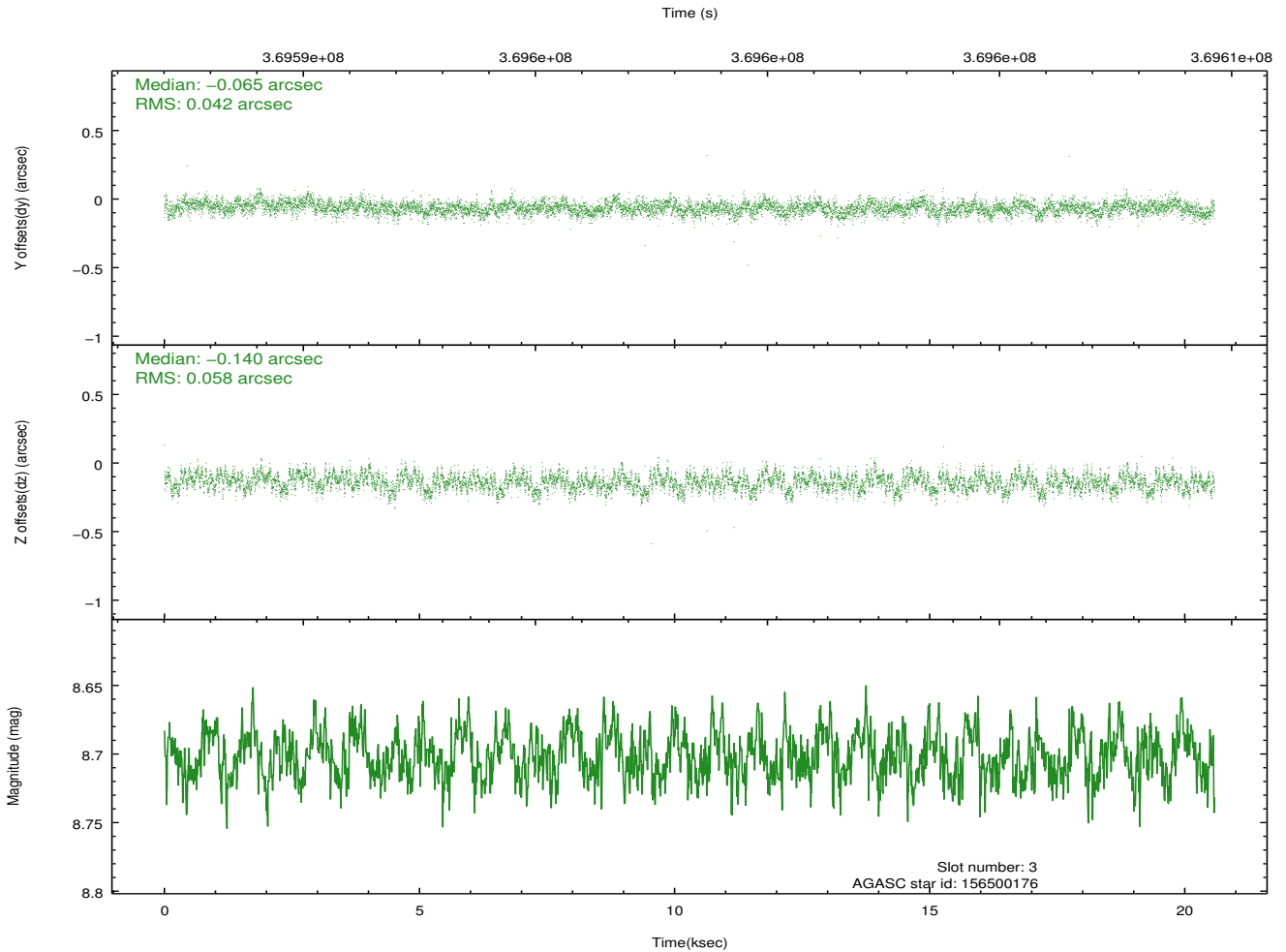
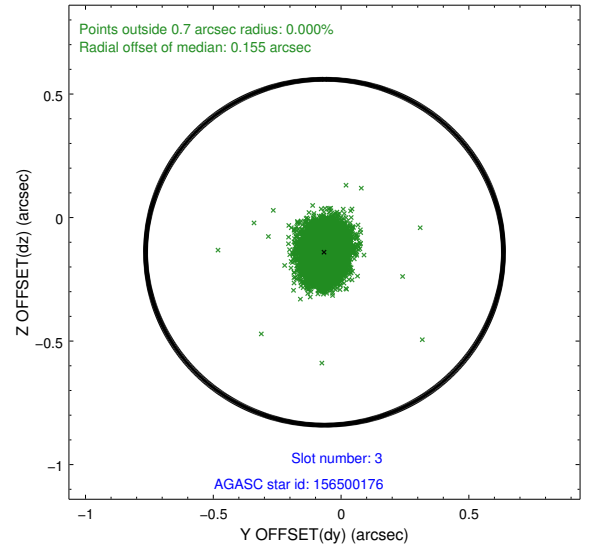
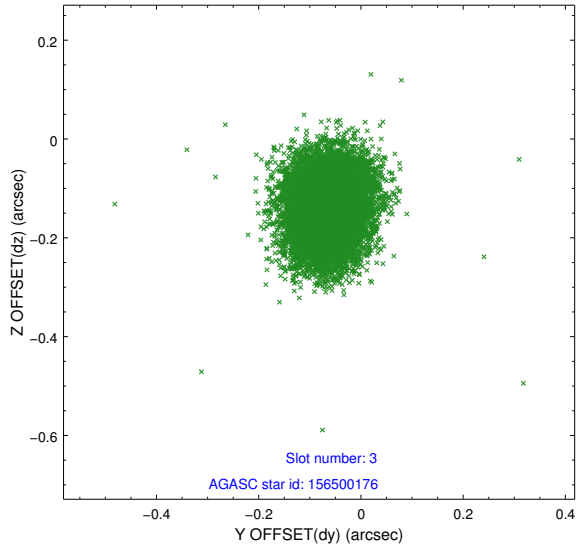


Slot Statistics

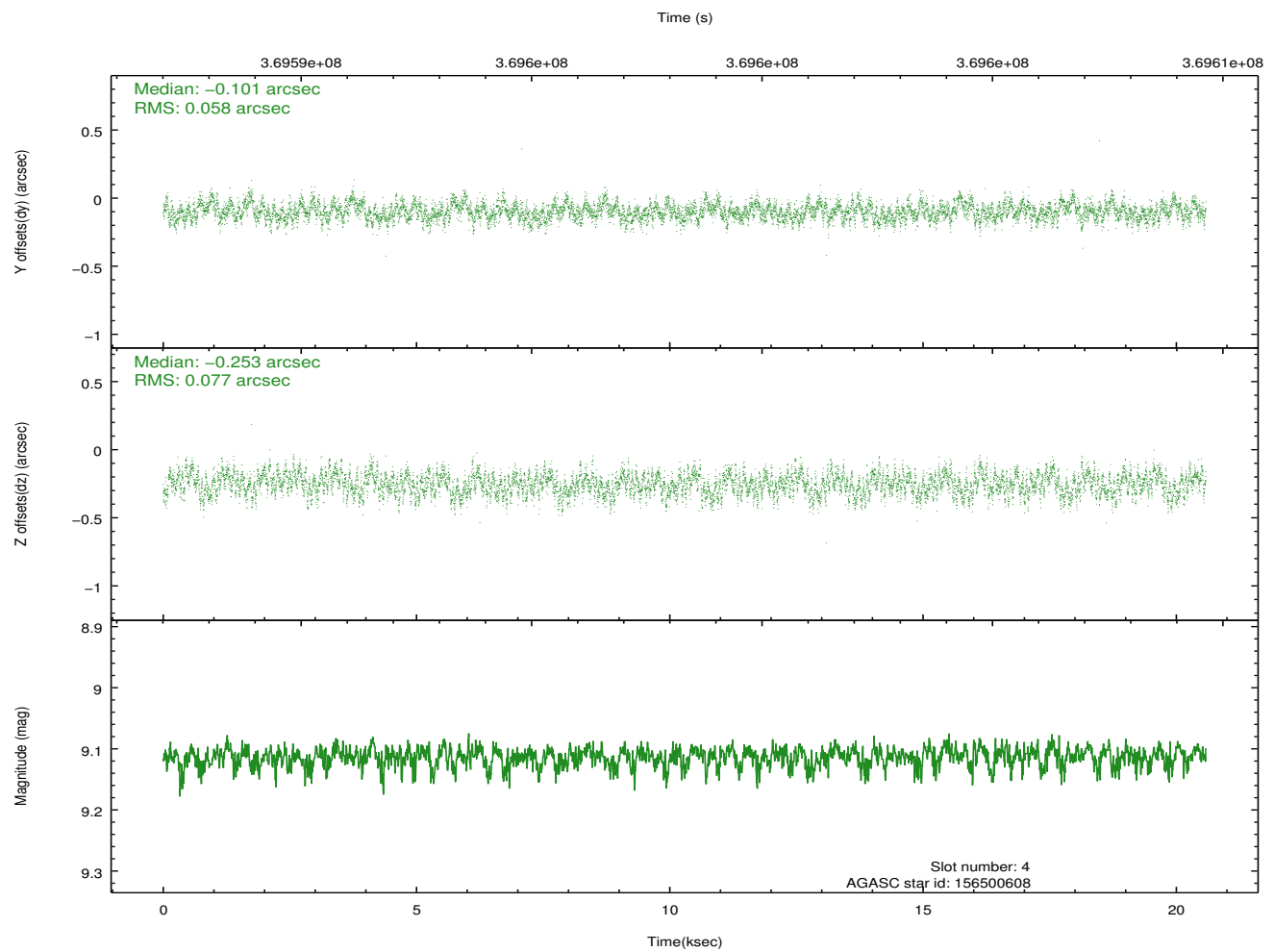
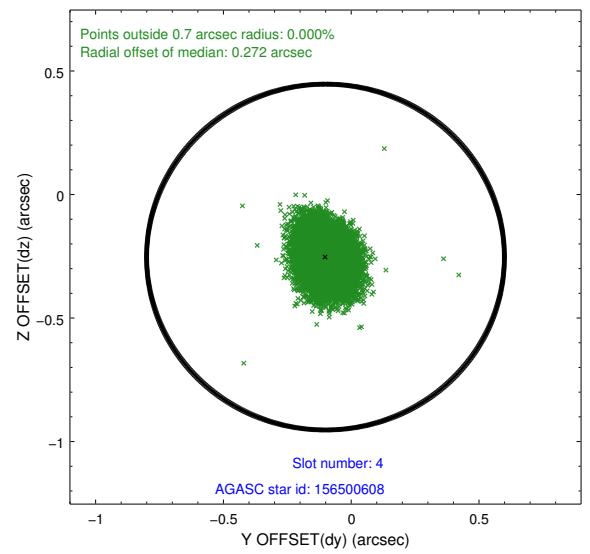
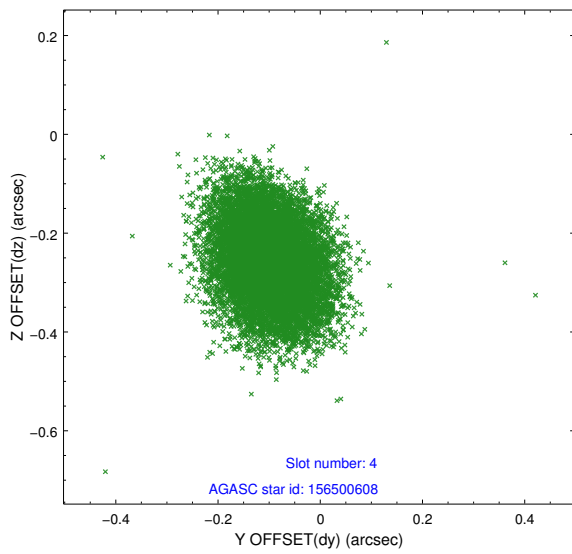
slot	status	id	mag	n_pts	med_dy	med_dz	dr1	dr2	ra	dec	mean_y	mean_z
0	FID	ACIS-I-1	7.02	5021	0.140	-0.124	0.008	0.016	0.000000	0.000000	927.52	-1017.69
1	FID	ACIS-I-5	7.03	5021	-0.262	0.118	0.008	0.018	0.000000	0.000000	-1820.94	879.86
2	FID	ACIS-I-6	7.04	5021	0.031	0.078	0.007	0.012	0.000000	0.000000	392.70	1524.58
3	GUIDE	156500176	8.70	10033	-0.065	-0.140	0.076	0.123	11.171670	20.448926	1112.23	1035.13
4	GUIDE	156500608	9.11	10036	-0.101	-0.253	0.103	0.165	11.245383	20.021682	-18.10	2105.90
5	GUIDE	156502176	8.03	10038	-0.019	0.169	0.066	0.108	11.982190	21.024044	209.85	-2268.51
6	GUIDE	156504328	9.33	10034	0.099	0.193	0.107	0.174	12.430893	20.736850	-1616.46	-2375.00
7	GUIDE	156509336	7.47	10041	0.085	0.036	0.055	0.087	12.201488	20.214746	-2156.17	-415.34

2.4 Star Slots

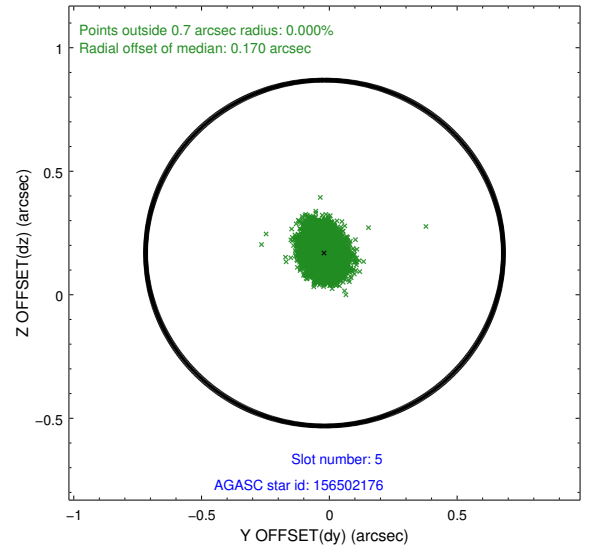
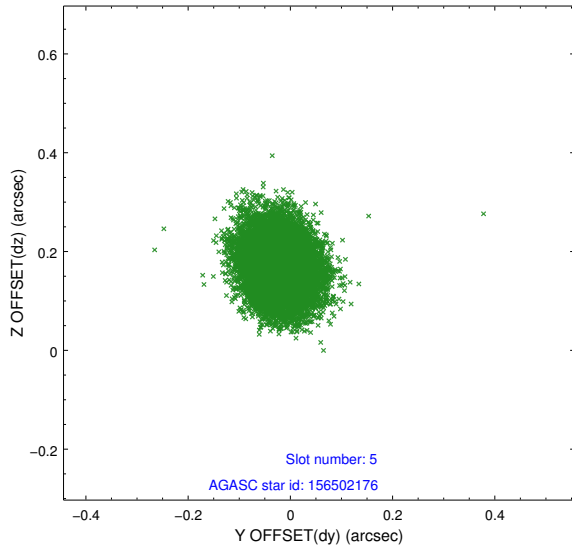
2.4.1 Slot 3



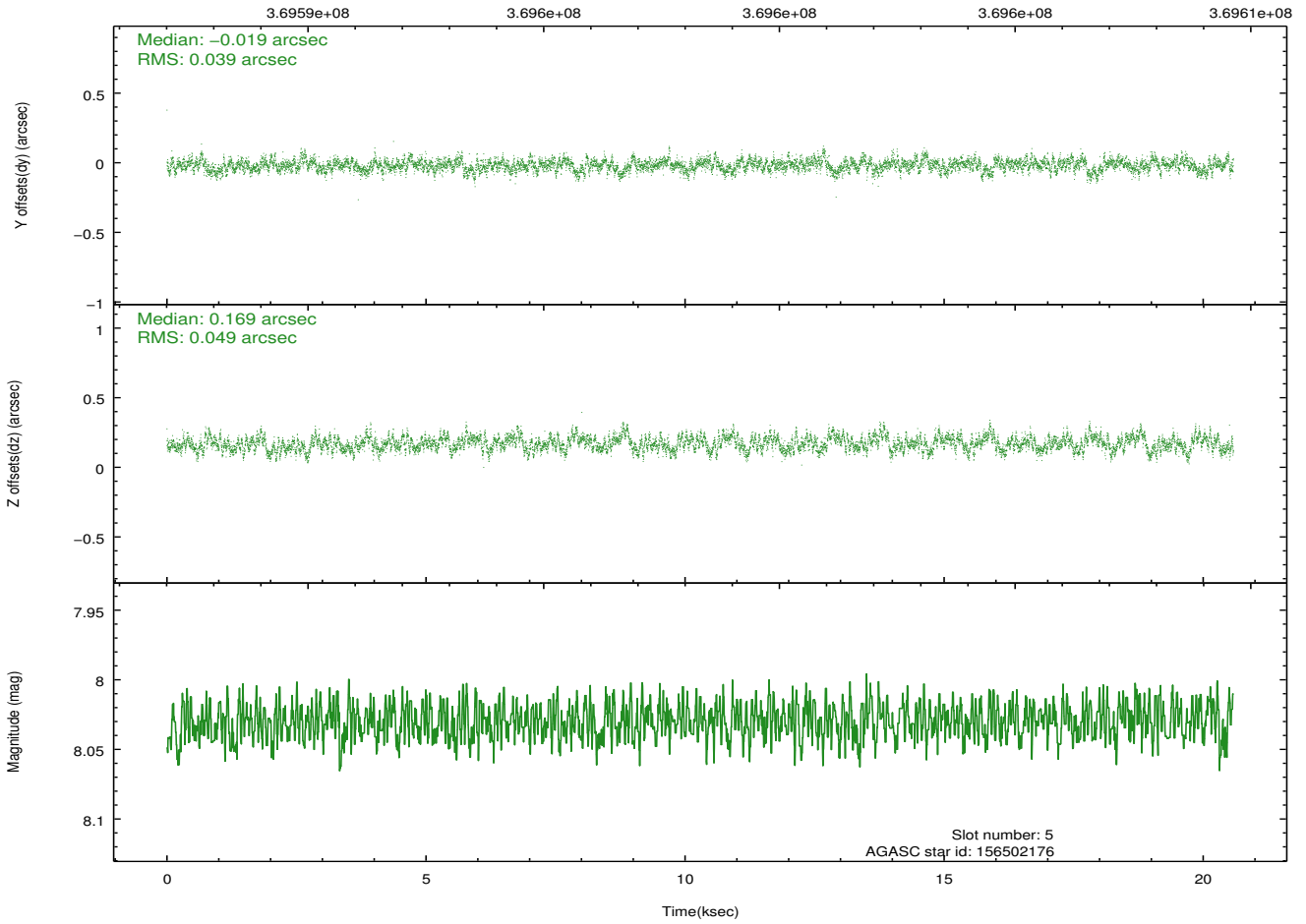
2.4.2 Slot 4



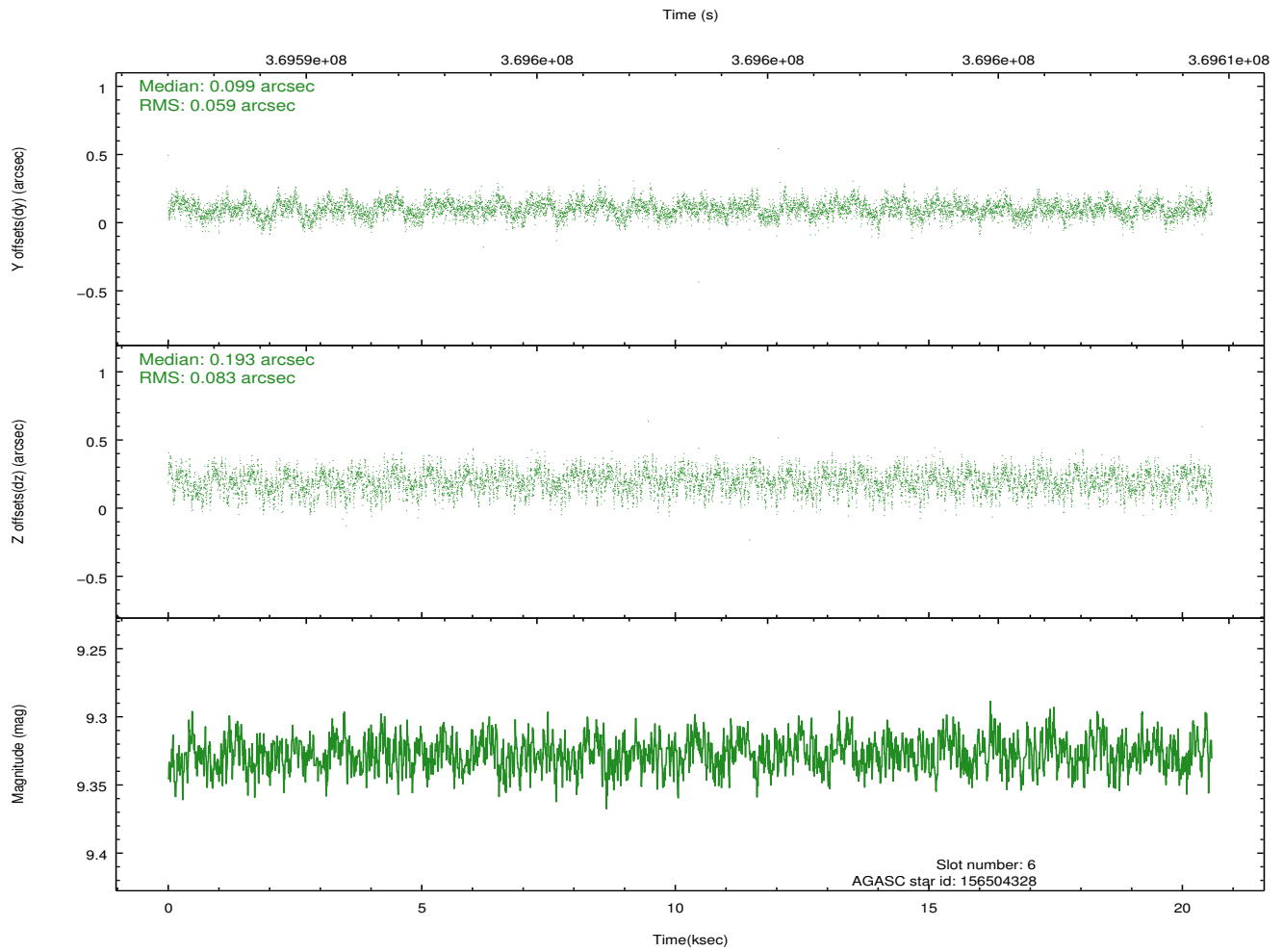
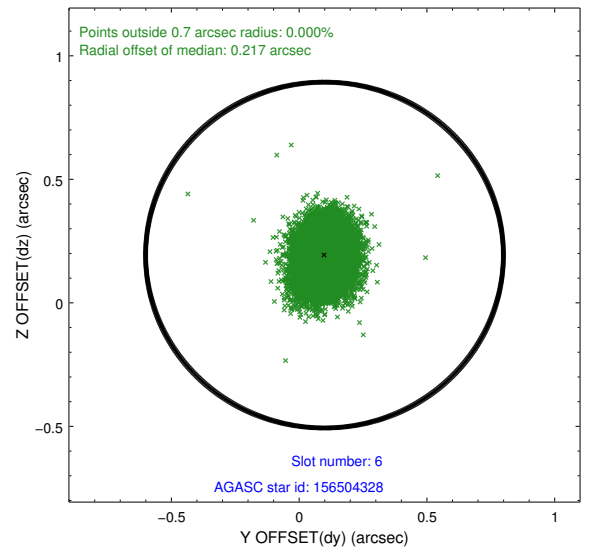
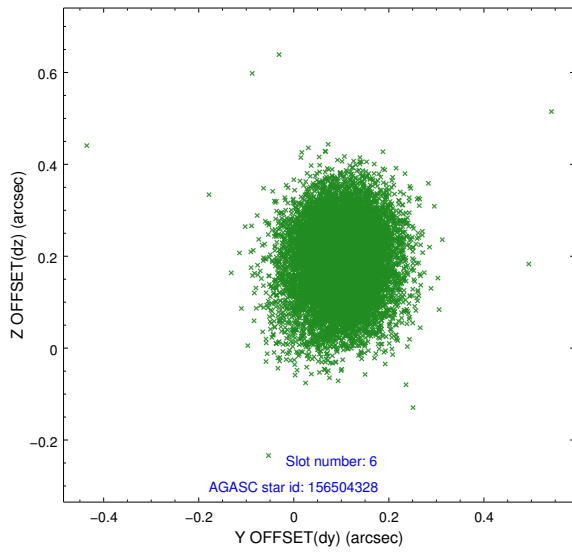
2.4.3 Slot 5



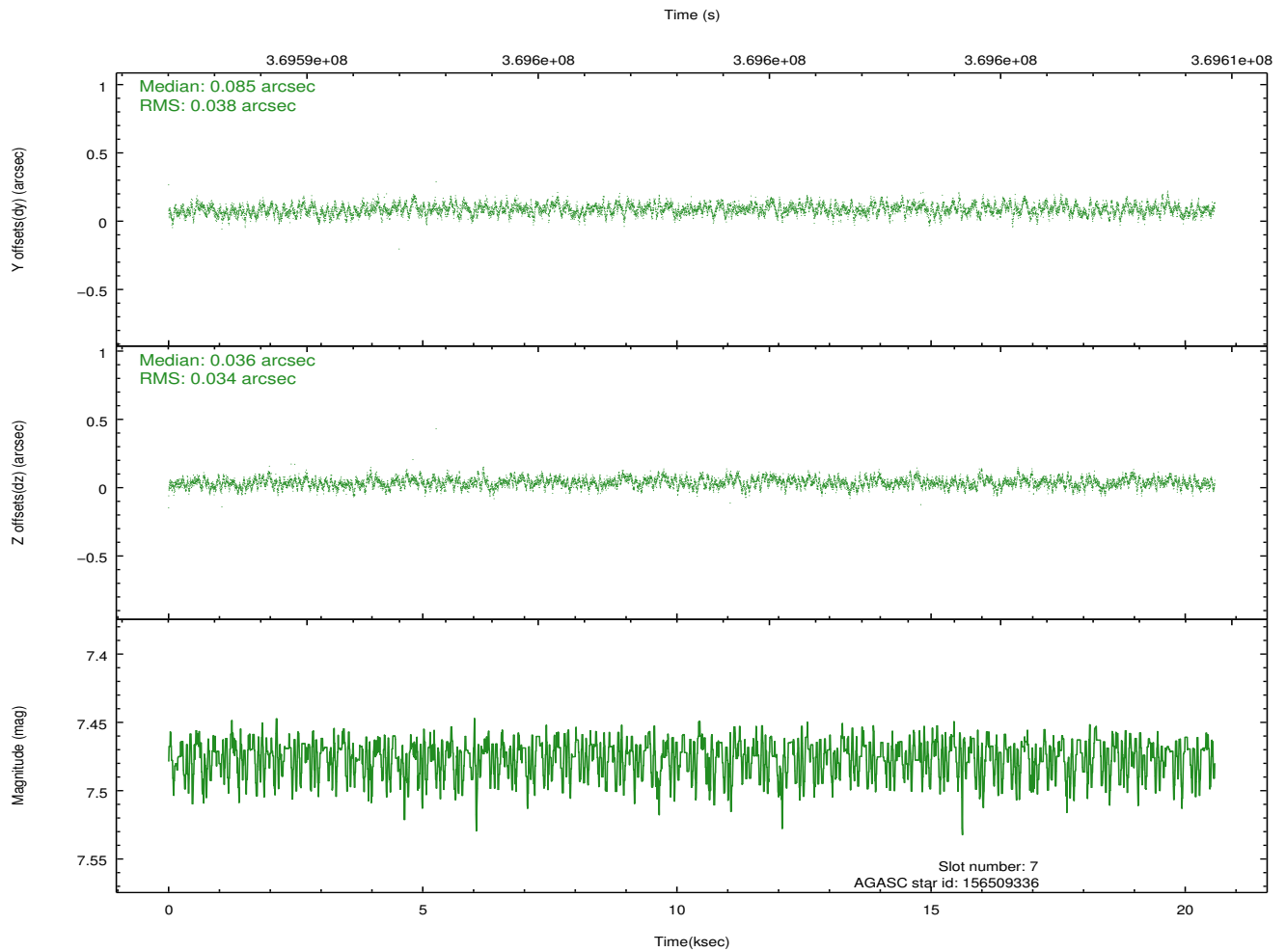
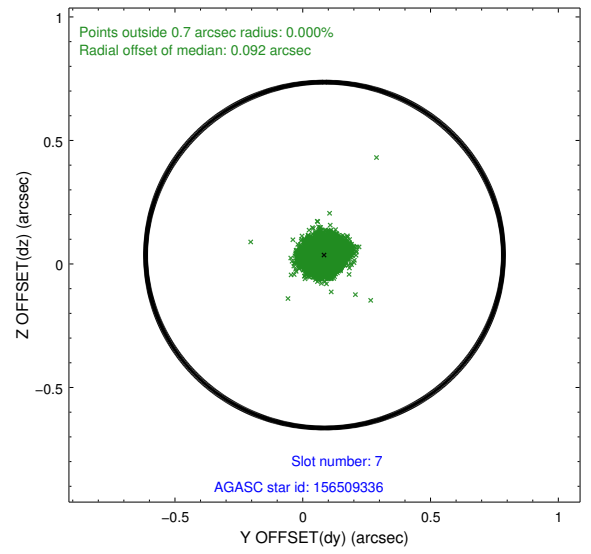
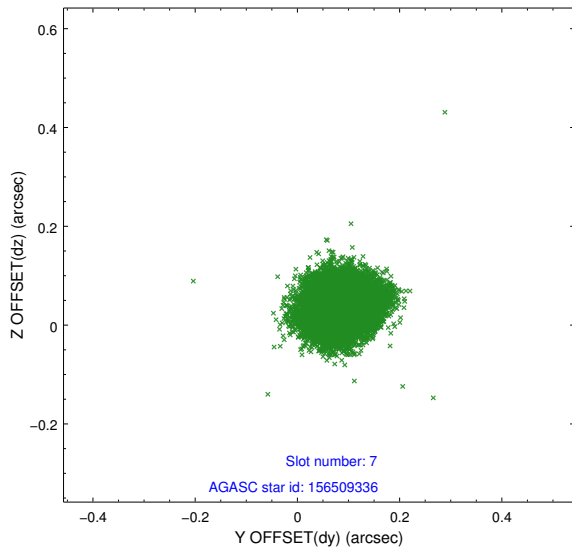
Time (s)



2.4.4 Slot 6

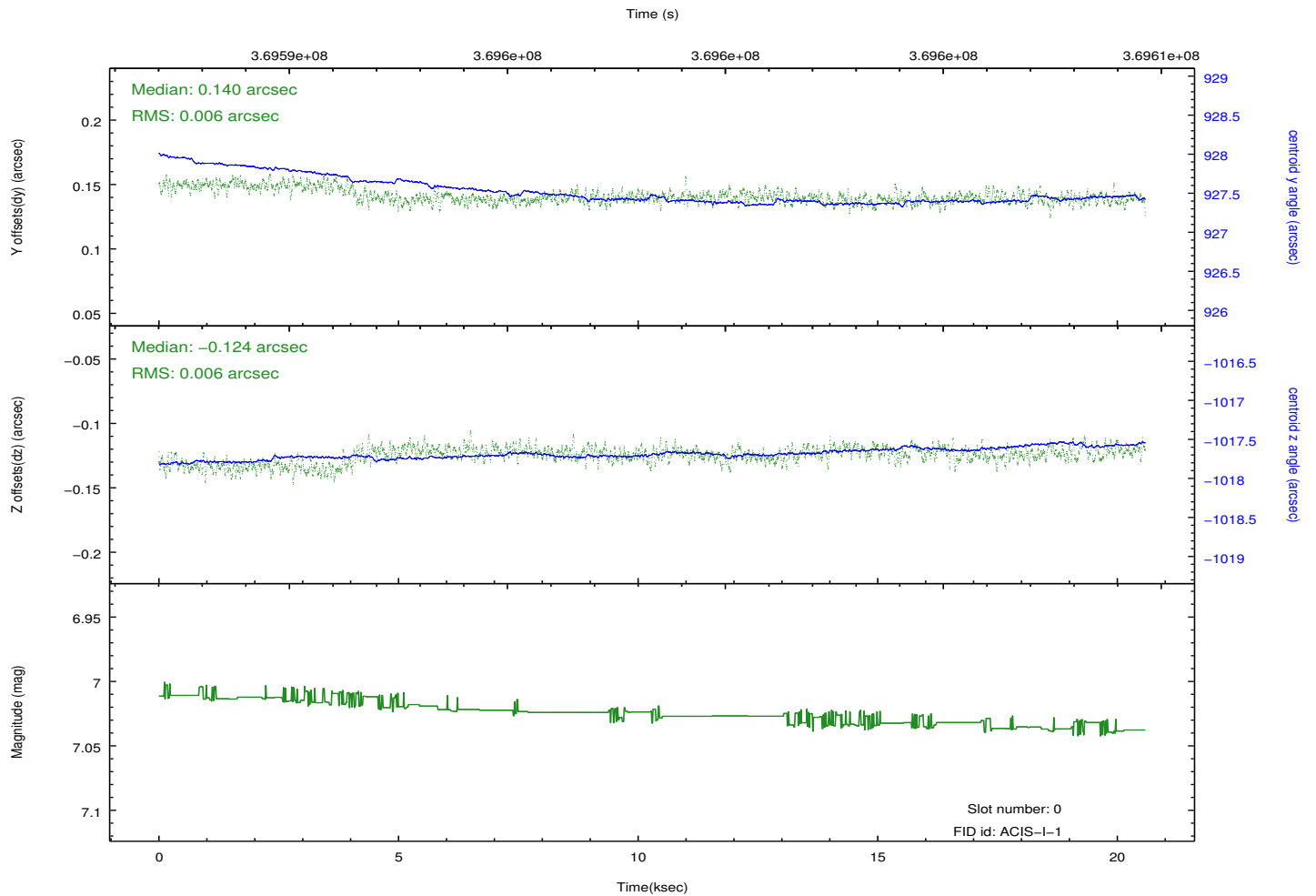
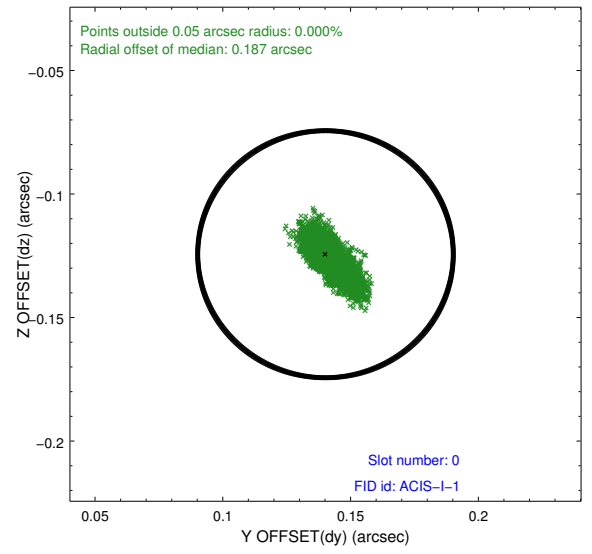
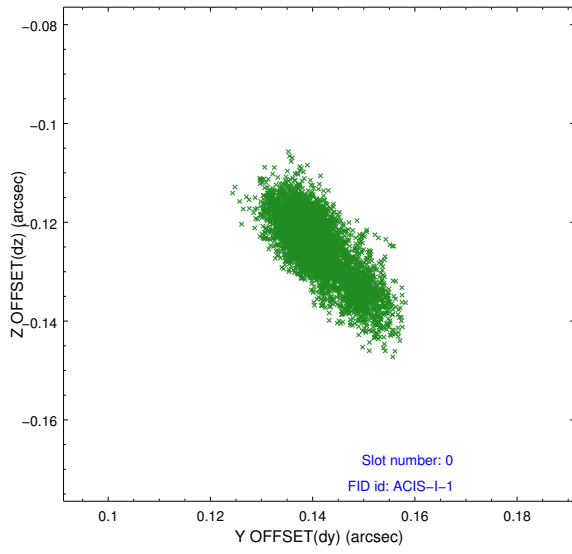


2.4.5 Slot 7

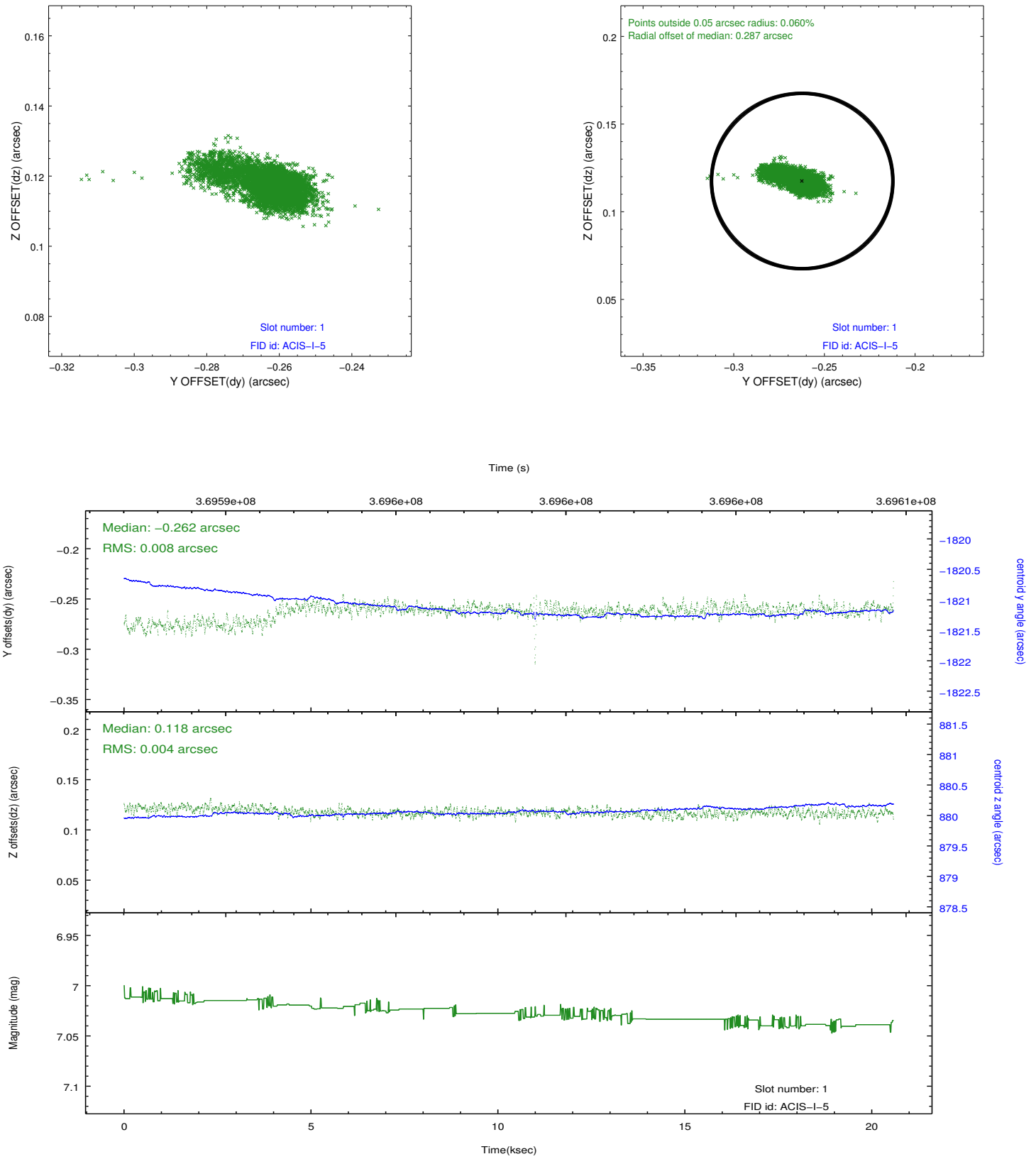


2.5 FID Slots

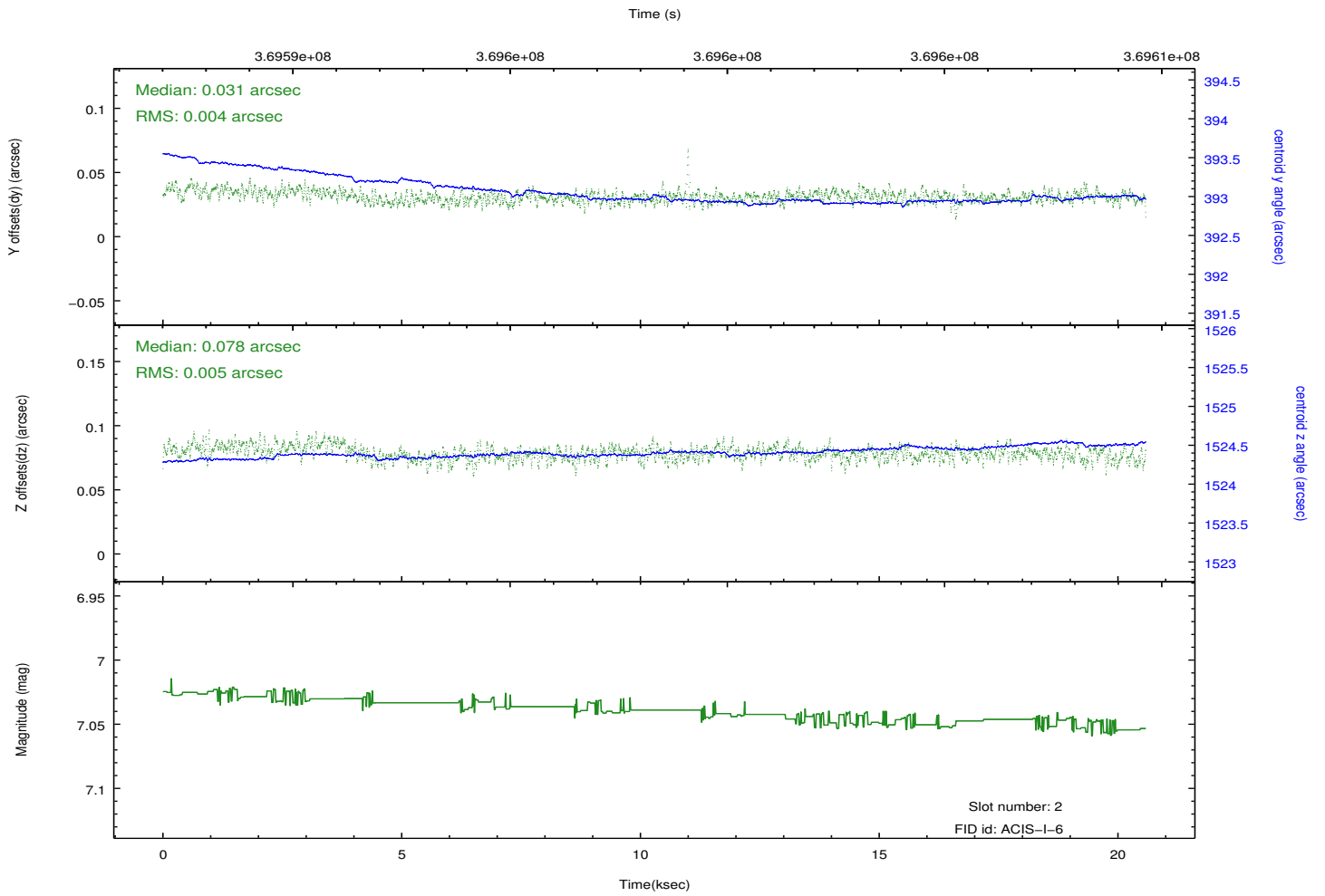
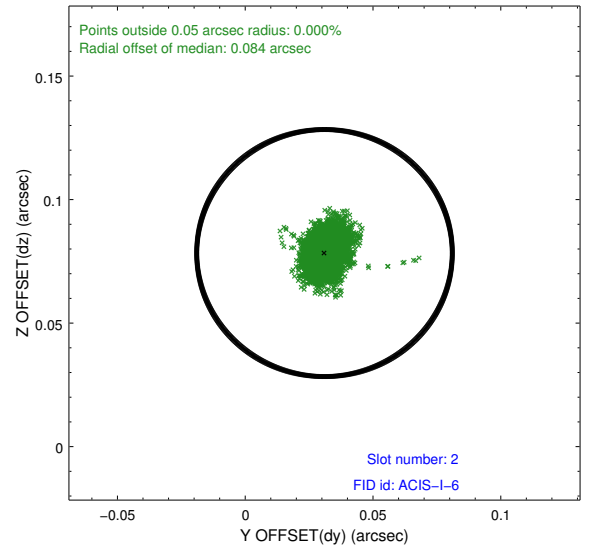
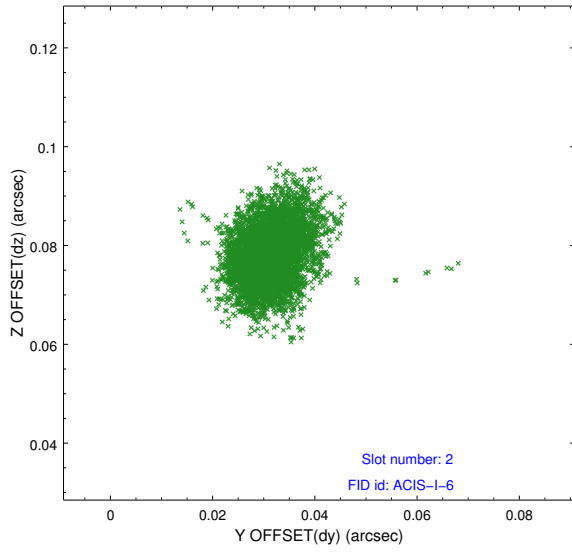
2.5.1 Slot 0



2.5.2 Slot 1



2.5.3 Slot 2



A Summary

A.1 Status

V&V Scientist	Jen Lauer
V&V Date (YYYY-MM-DD)	2012.06.18
V&V Edition	1
V&V Disposition and Status	OK
V&V Charge Time	20.041013770819

A.2 Comments