

# V&V Reference Report

## L2 ASCDS Version : 8.4.5

Observation 12006 - L2 Version 2  
Chandra X-Ray Center

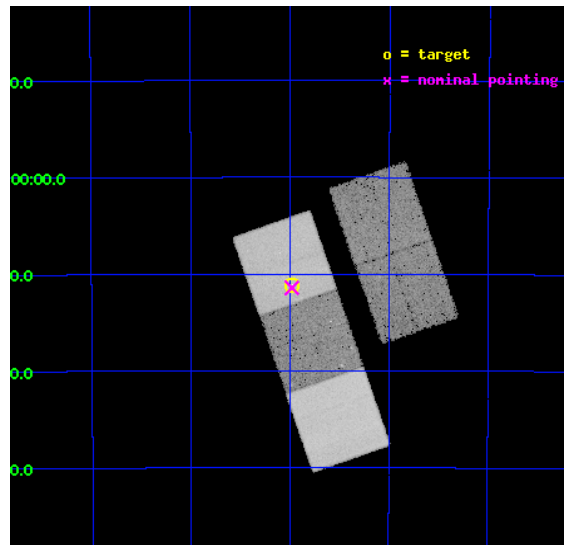
L2 Processing Date : Jun 15 2012

## Contents

<b>1</b>	<b>Front</b>	<b>2</b>
<b>2</b>	<b>OBI</b>	<b>3</b>
2.1	OBI . . . . .	3
2.1.1	Images . . . . .	3
2.1.2	Bias . . . . .	3
2.1.3	Parameters . . . . .	4
2.1.4	Events . . . . .	4
2.2	Compared Parameters . . . . .	5
2.3	Aspect . . . . .	6
2.4	Star Slots . . . . .	9
2.4.1	Slot 3 . . . . .	9
2.4.2	Slot 4 . . . . .	10
2.4.3	Slot 5 . . . . .	11
2.4.4	Slot 6 . . . . .	12
2.4.5	Slot 7 . . . . .	13
2.5	FID Slots . . . . .	14
2.5.1	Slot 0 . . . . .	14
2.5.2	Slot 1 . . . . .	15
2.5.3	Slot 2 . . . . .	16
<b>A</b>	<b>Summary</b>	<b>17</b>
A.1	Status . . . . .	17
A.2	Comments . . . . .	17

# 1 Front

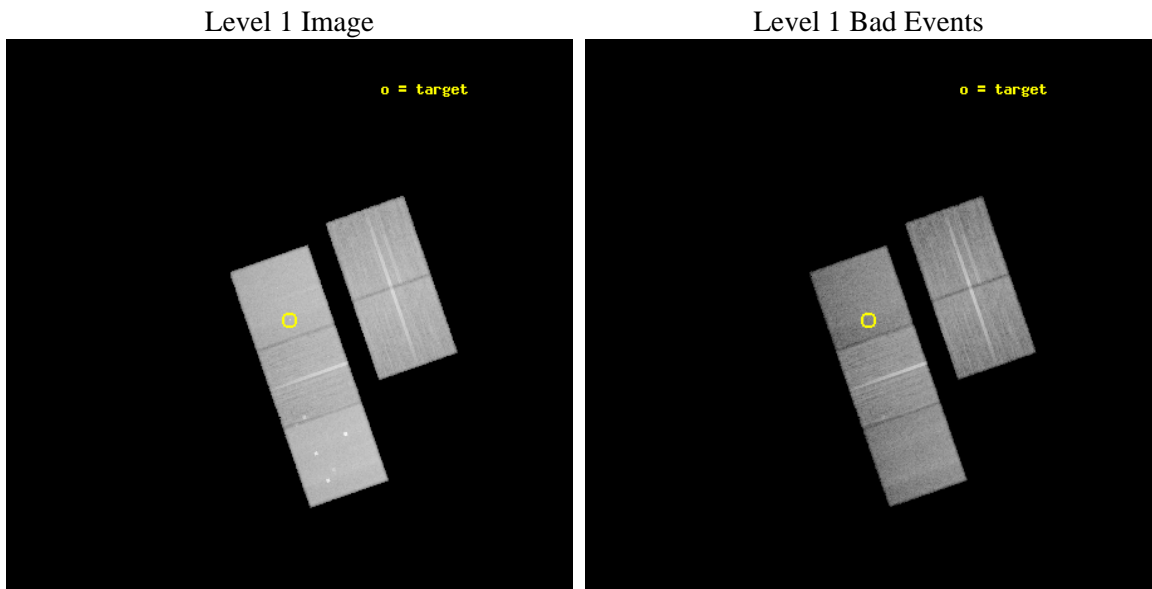
seq_num	401031	Sequence number
obs_id	12006	Observation id
title	The cooling neutron star in the super-Eddington accretor XTE J1701-462	Proposal title
observer	Dr Jeroen Homan	Principal investigator
object	XTE J1701-462	Source name
dtcycle	0	&#160
cycle	P	events from which exps? Prim/Second/Both
ra_targ	255.24375	Observer's specified target RA [deg]
dec_targ	-46.185722	Observer's specified target Dec [deg]
ra_nom	255.24527045341	Nominal RA [deg]
dec_nom	-46.190462203229	Nominal Dec [deg]
roll_nom	250.85772967858	Nominal Roll [deg]
revision	2	Processing version of data
ontime	26139.200201035	Sum of GTIs [s]
livetime	25797.672307009	Livetime [s]
ontime2	26139.200201035	Sum of GTIs [s]
ontime3	26136.059210837	Sum of GTIs [s]
ontime5	26139.200201035	Sum of GTIs [s]
ontime6	26136.059210718	Sum of GTIs [s]
ontime7	26139.200201035	Sum of GTIs [s]
l2events	325559	Number of level 2 events



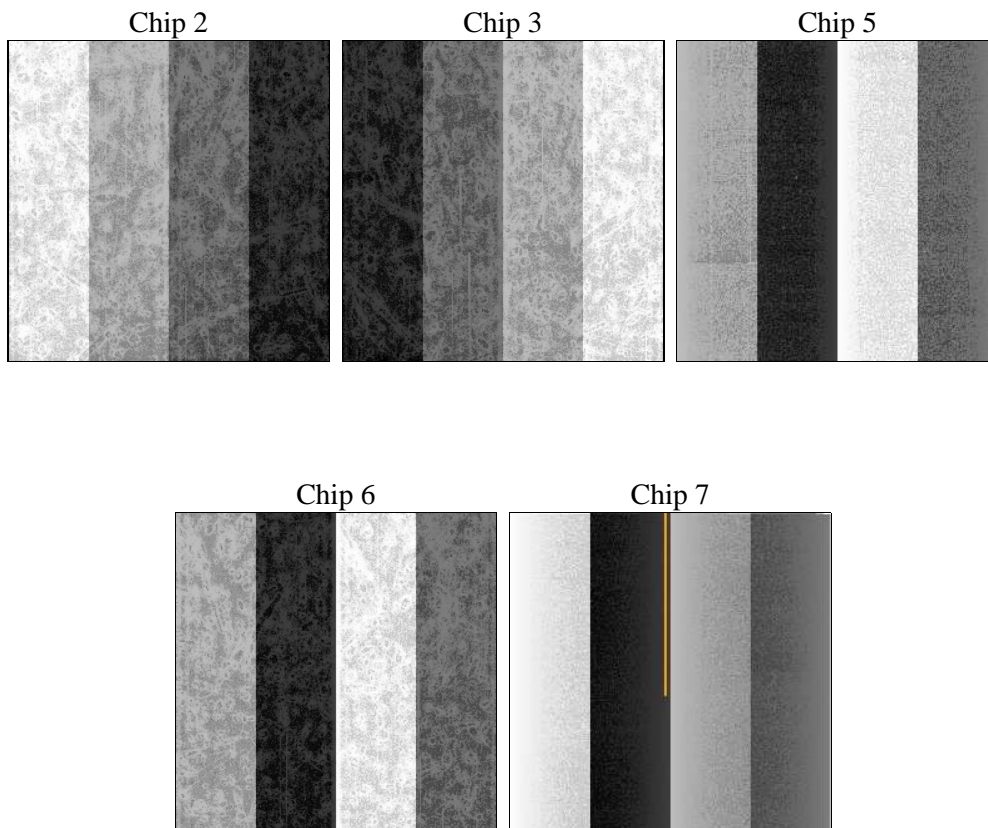
## 2 OBI

### 2.1 OBI

#### 2.1.1 Images



#### 2.1.2 Bias



### 2.1.3 Parameters

obi_num	0	Obi number	sched_exp_time	26000.000000	[s] Scheduled observation exposure time
ascdsver	8.4.5	Processing system revision	ontime	26139.200201035	Sum of GTIs [s]
caldsver	4.4.10	&#160	ontime2	26139.200201035	Sum of GTIs [s]
date	2012-06-15T12:48:44	Date and time of file creation	ontime3	26136.059210837	Sum of GTIs [s]
revision	2	Processing version of data	ontime5	26139.200201035	Sum of GTIs [s]
			ontime6	26136.059210718	Sum of GTIs [s]
			ontime7	26139.200201035	Sum of GTIs [s]
			l1events	1295127	Number of level 1 events

### 2.1.4 Events

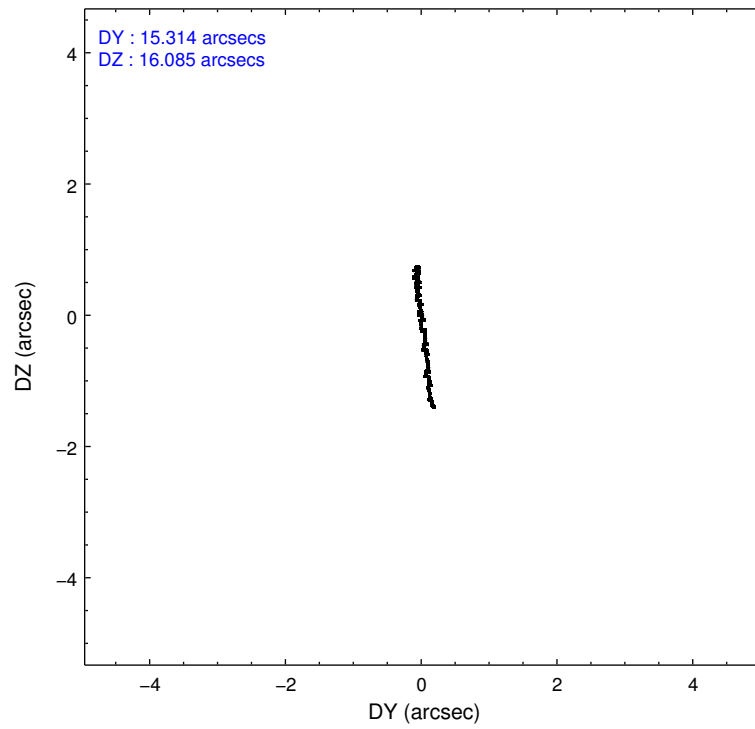
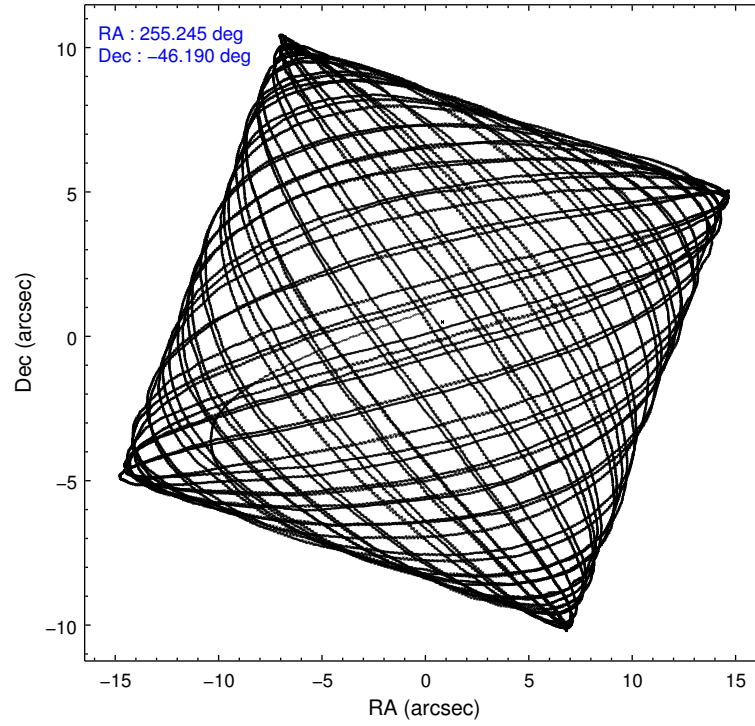
	ccd 2	ccd 3	ccd 5	ccd 6	ccd 7
level 1 events	233751	221363	334113	239229	266671
rejected events	210962	199424	170523	214119	147771
rejected %	90%	90%	51%	89%	55%

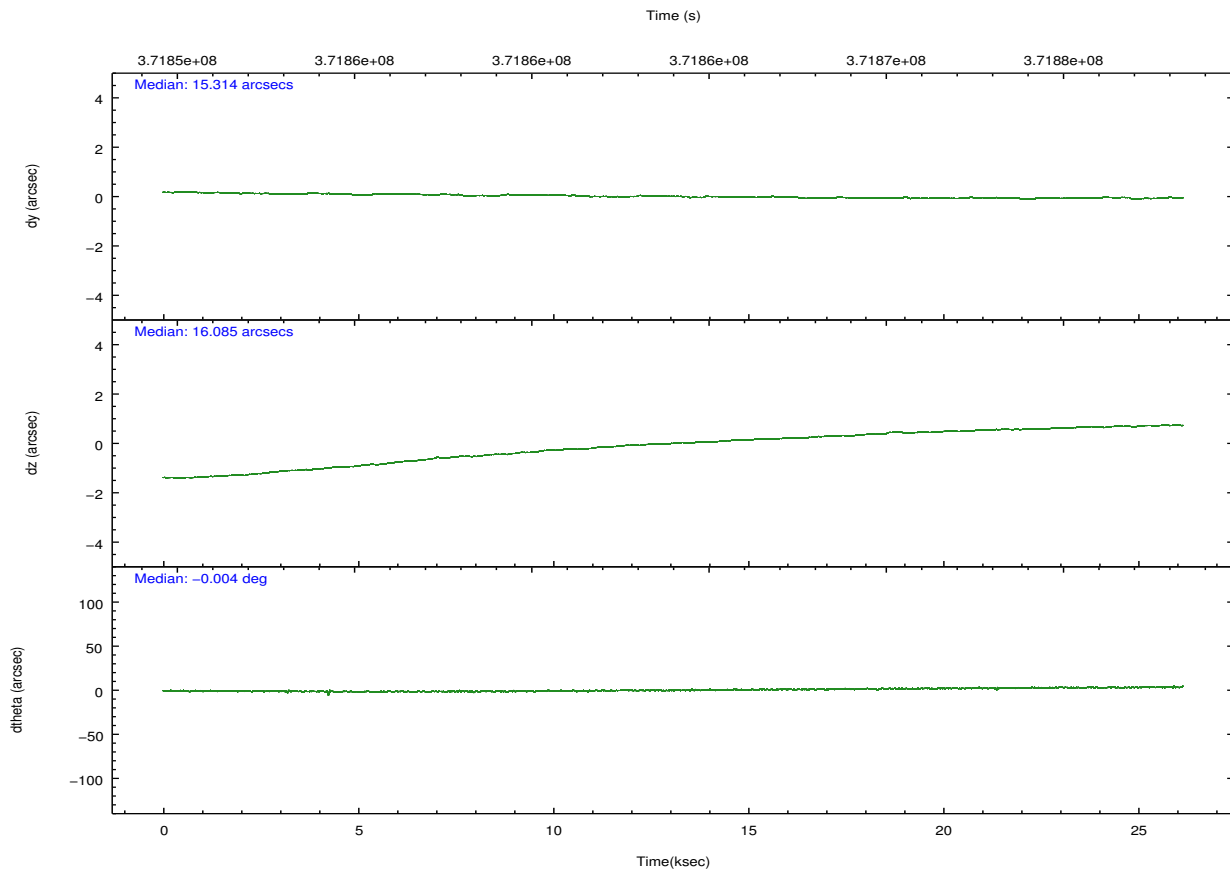
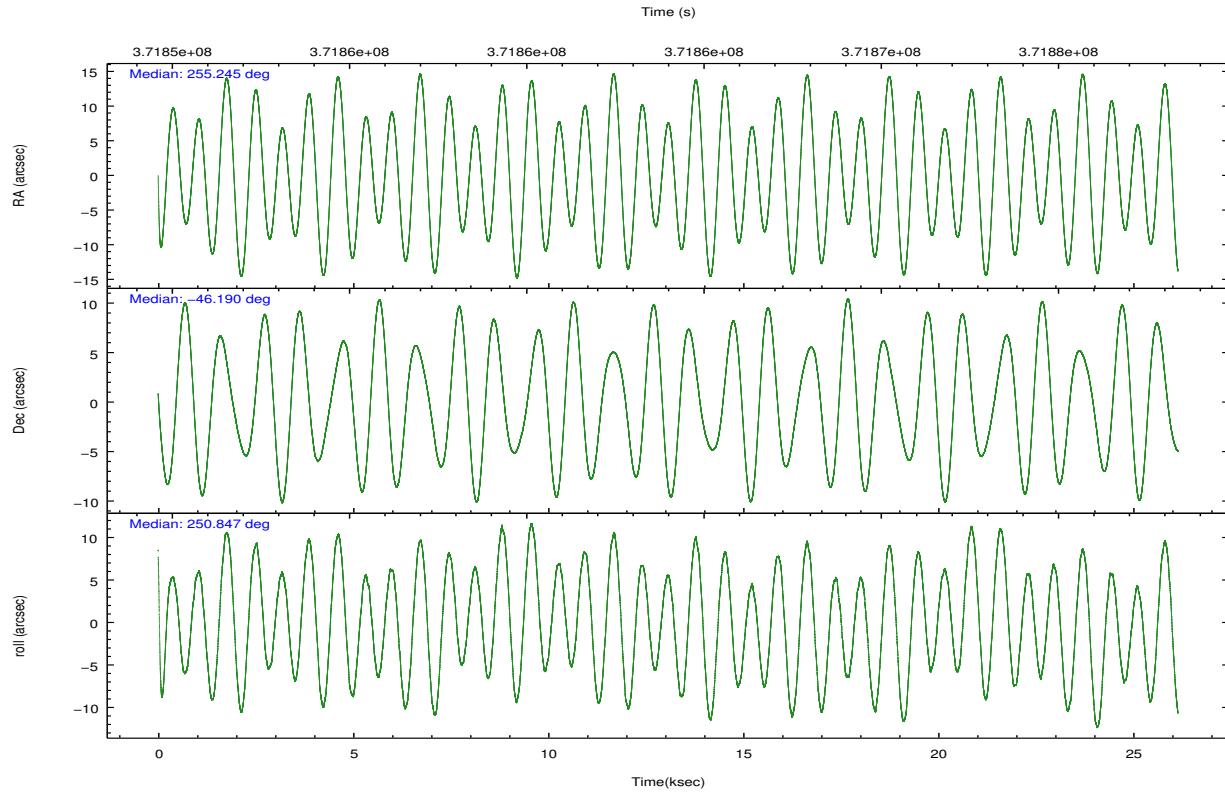
	ccd 2	ccd 3	ccd 5	ccd 6	ccd 7
grade 0 events	8414	8206	18400	8849	11180
	3%	3%	5%	3%	4%
grade 1 events	125	149	679	114	327
	0%	0%	0%	0%	0%
grade 2 events	5448	4804	49743	6110	24587
	2%	2%	14%	2%	9%
grade 3 events	2499	2465	6339	2699	10803
	1%	1%	1%	1%	4%
grade 4 events	2478	2405	6150	2549	10820
	1%	1%	1%	1%	4%
grade 5 events	7697	9512	25435	9846	27942
	3%	4%	7%	4%	10%
grade 6 events	4357	4381	85908	5348	63528
	1%	1%	25%	2%	23%
grade 7 events	202733	189441	141459	203714	117484
	86%	85%	42%	85%	44%

## 2.2 Compared Parameters

Parameter	Planned	Actual	Parameter	Planned	Actual
Instrument	ACIS	ACIS	Obspar format version number	7	7
Detector	ACIS-23567	ACIS-23567	Obspar file type	PREDICTED	ACTUAL
Grating	NONE	NONE	Obspar update status	NONE	UPDATED
Data mode	VFAINT	VFAINT	Number of optional ACIS chips dropped	0	0
Observation mode	POINTING	POINTING	On-chip summing requested	N	N
[deg] Pointing RA	255.237309	255.2452704534131	Subarray requested	NONE	NONE
[deg] Pointing Dec	-46.163680	-46.19046220322875	Alternating exposures requested	N	N
[deg] Pointing Roll	250.695356	250.8577296785799	[s] Primary exposure time	0.000000	3.1
[s] Window start time (MET)	371736066.184000	371736066.184000			
[s] Window stop time (MET)	372254466.184000	372254466.184000			
[mm] SIM focus pos	-0.684267	-0.6828225247311905			
[mm] SIM defocus	0	0.001444936568705701			
[mm] SIM translation stage pos	-190.132523	-190.1425803651734			
[mm] SIM translation stage offset	0	0.01005778216563158			
[s] Observation start time (MET)	371851042.184000	371849835.84165			
Observation start date	2009-10-13T19:56:16	2009-10-13T19:37:15			
[s] Observation end time (MET)	371877042.184000	371878005.91807			
Observation end date	2009-10-14T03:09:36	2009-10-14T03:26:45			
Read mode	TIMED	TIMED			

## 2.3 Aspect



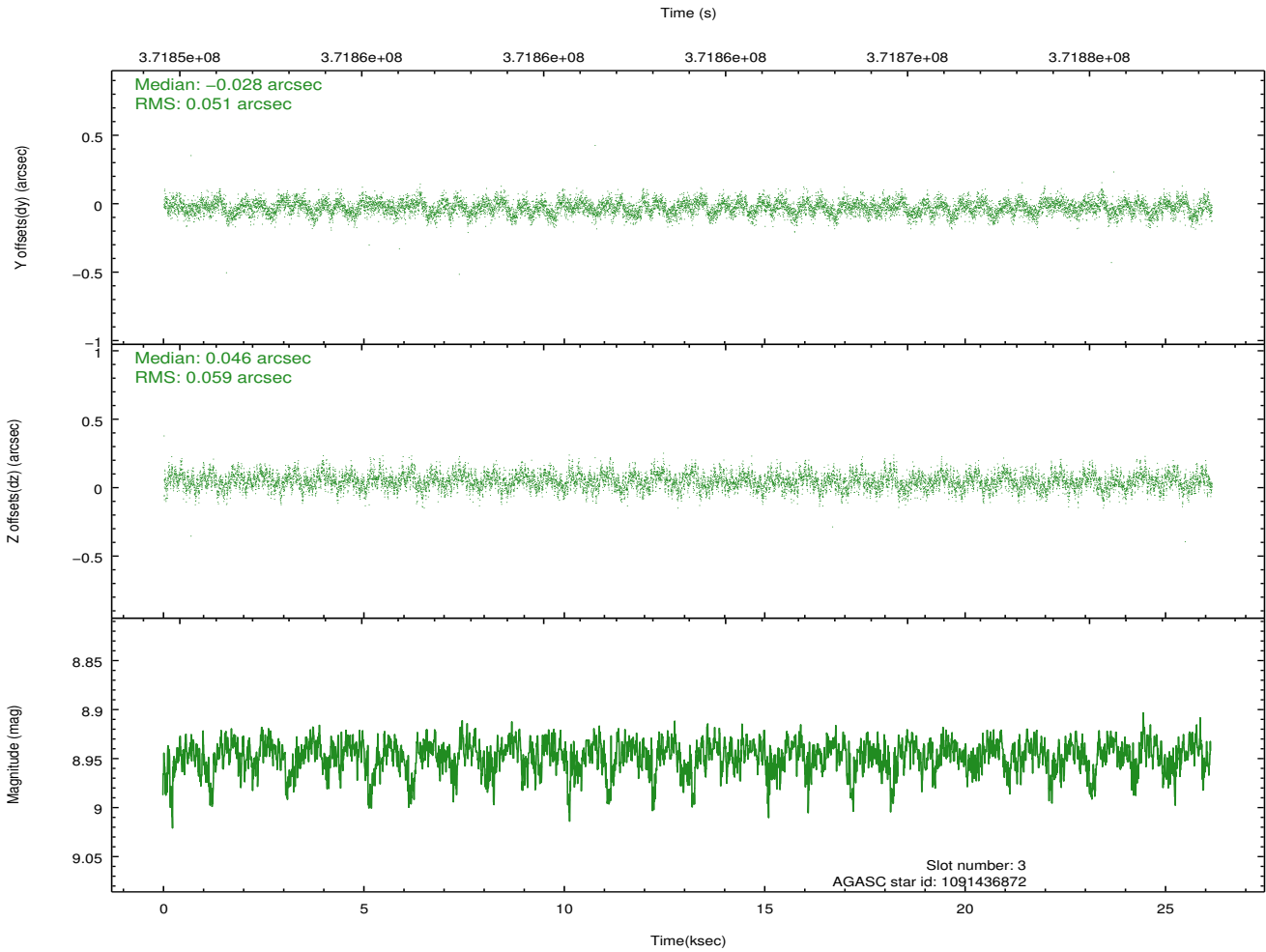
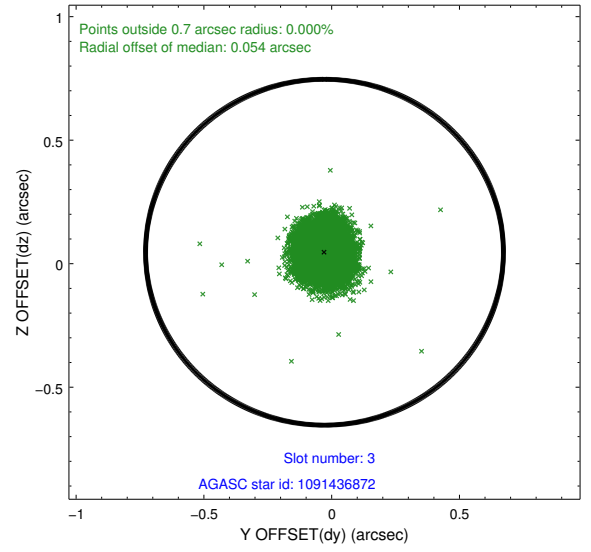
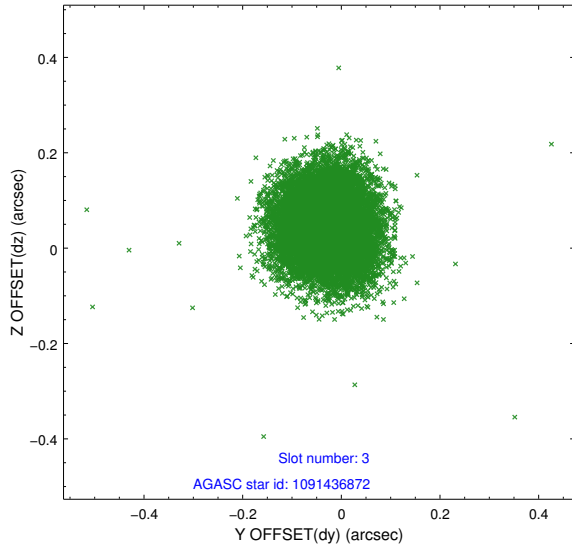


### Slot Statistics

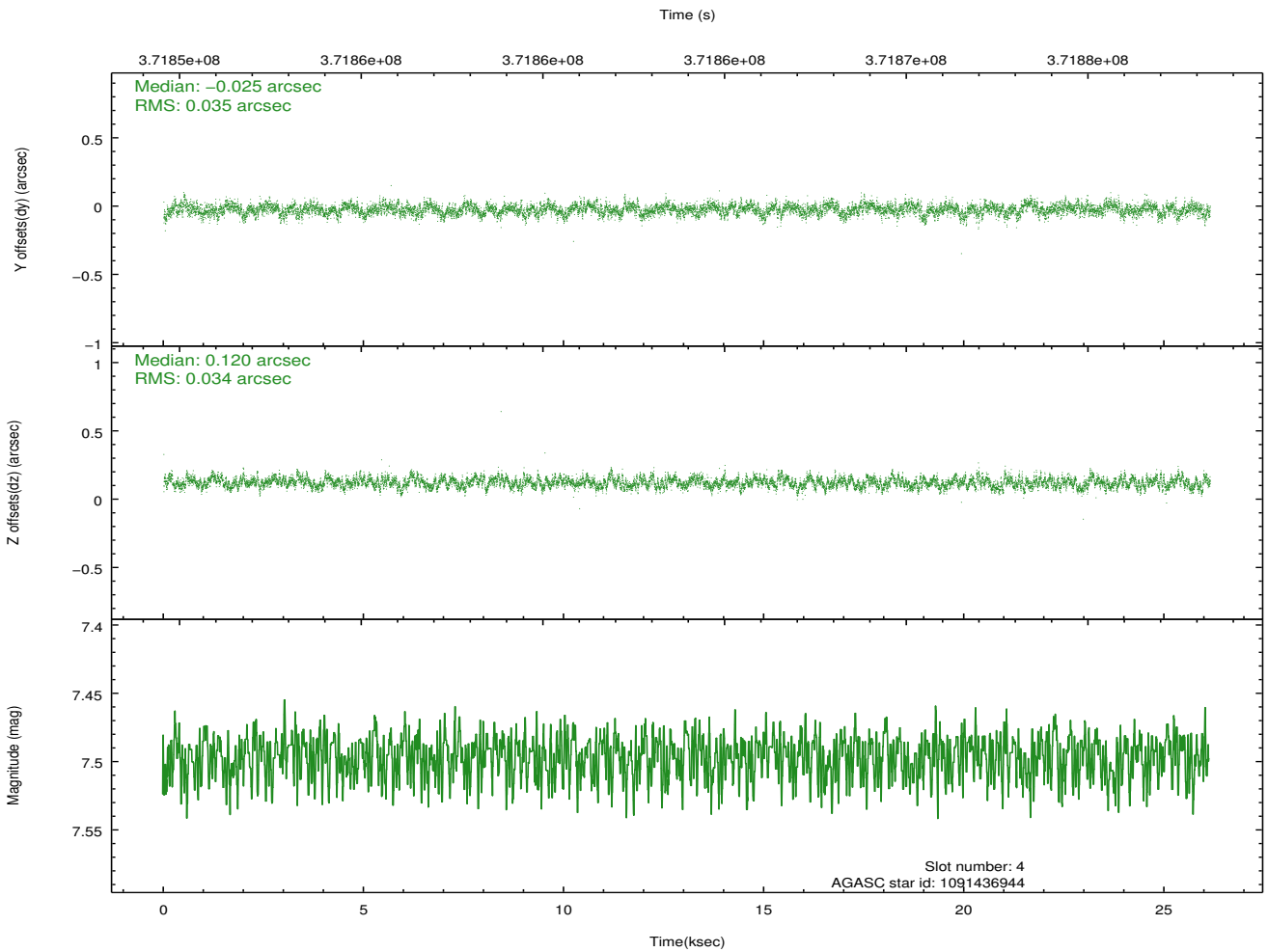
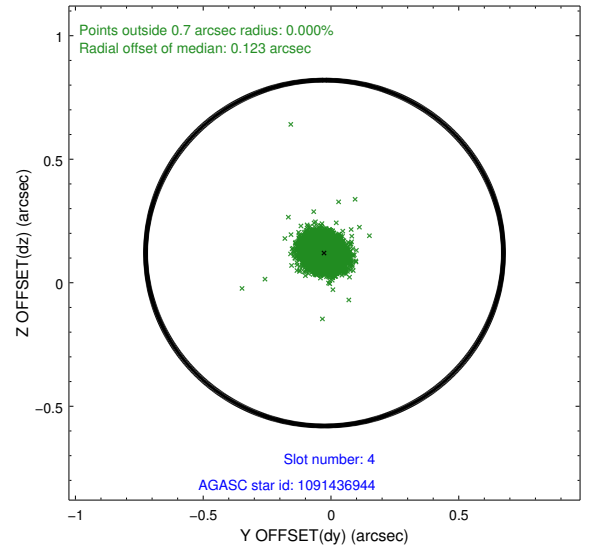
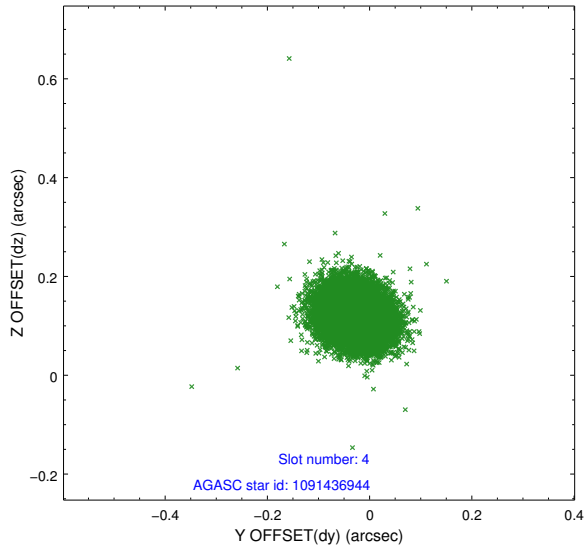
slot	status	id	mag	n_pts	med_dy	med_dz	dr1	dr2	ra	dec	mean_y	mean_z
0	FID	ACIS-S-2	6.91	6376	-0.095	-0.030	0.014	0.021	0.000000	0.000000	-768.40	-1737.32
1	FID	ACIS-S-4	6.99	6376	0.198	0.053	0.009	0.014	0.000000	0.000000	2145.12	171.13
2	FID	ACIS-S-5	7.02	6378	-0.136	-0.015	0.012	0.020	0.000000	0.000000	-1821.15	164.85
3	GUIDE	1091436872	8.95	12743	-0.028	0.046	0.082	0.134	255.728542	-46.511740	783.84	1564.47
4	GUIDE	1091436944	7.50	12753	-0.025	0.120	0.052	0.084	255.747540	-46.187588	-335.14	1230.27
5	GUIDE	1091443144	8.22	12753	-0.144	0.062	0.063	0.103	254.556494	-45.731344	-895.84	-2126.60
6	GUIDE	1091446248	8.67	12744	0.199	-0.148	0.086	0.135	254.157495	-46.281563	1306.93	-2389.06
7	GUIDE	1091450176	8.27	12747	0.002	-0.081	0.075	0.127	254.533043	-45.982352	-25.45	-1876.04

## 2.4 Star Slots

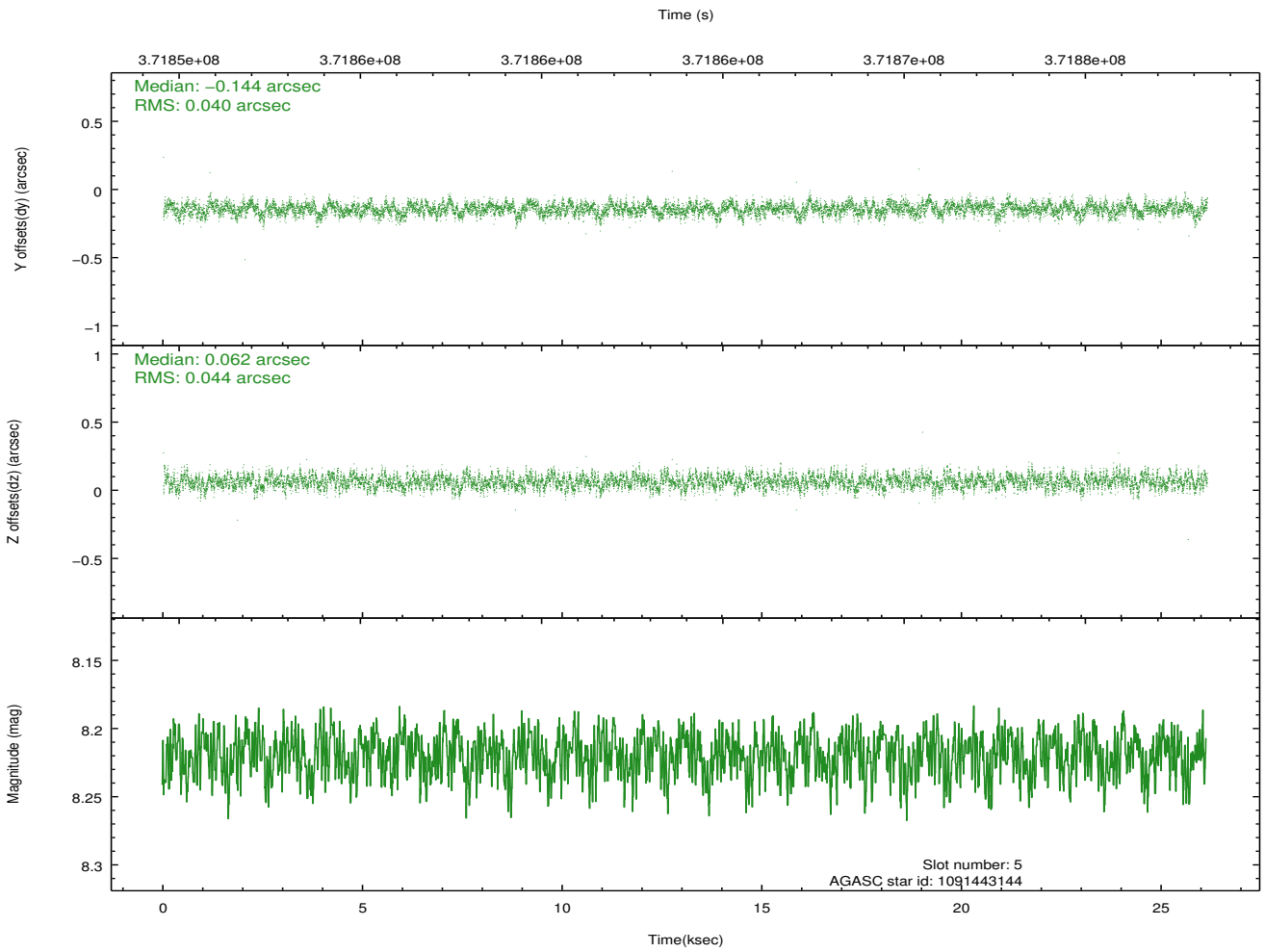
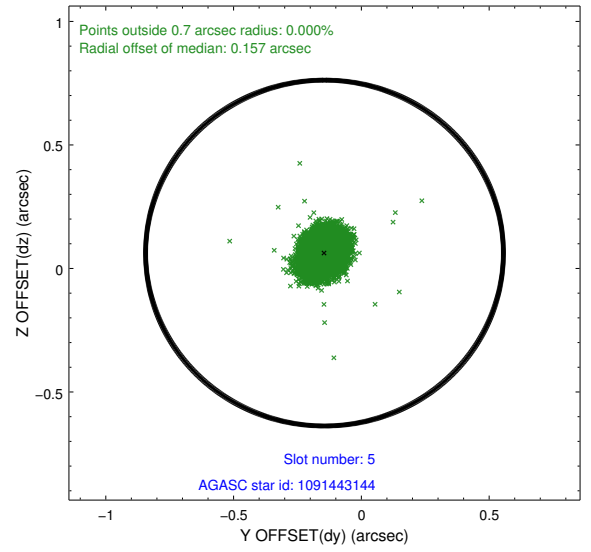
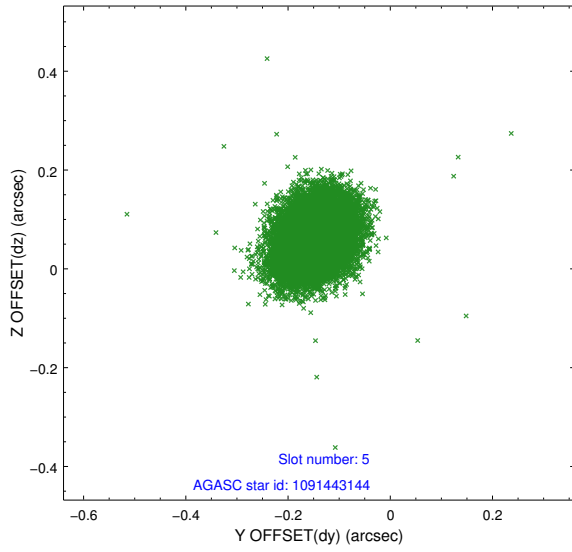
### 2.4.1 Slot 3



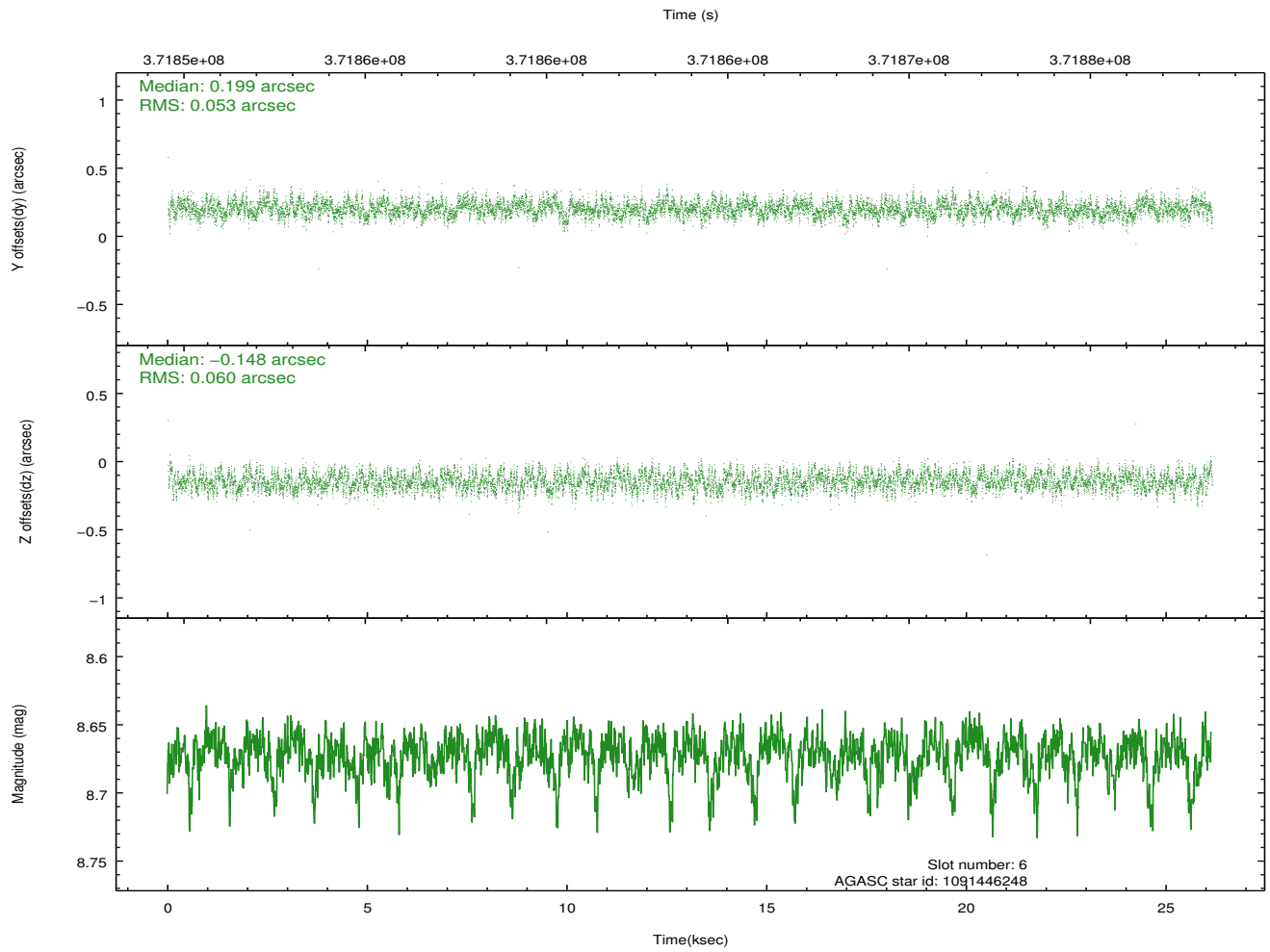
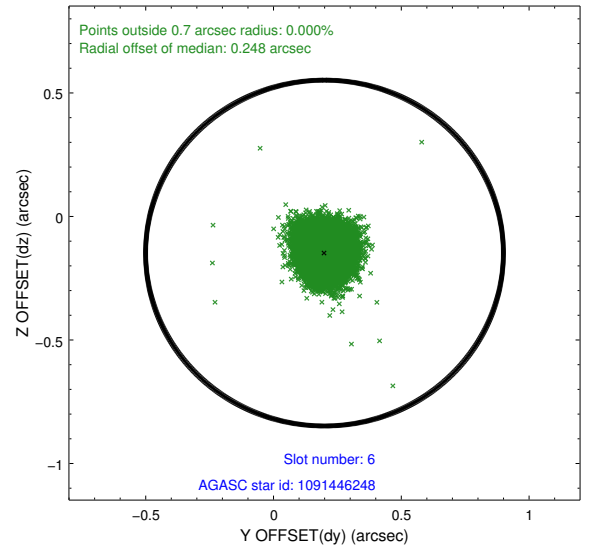
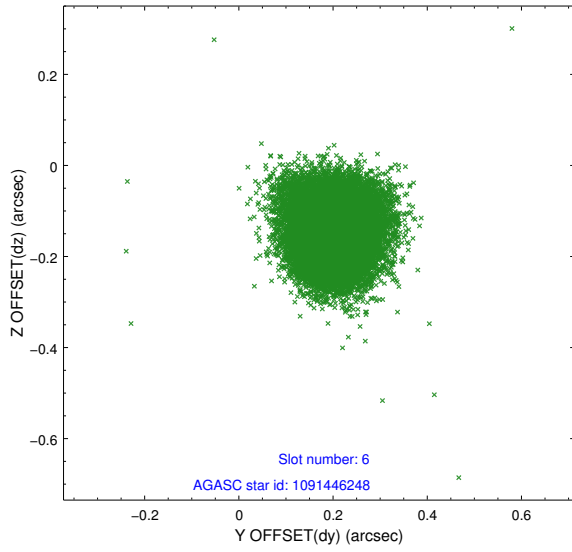
### 2.4.2 Slot 4



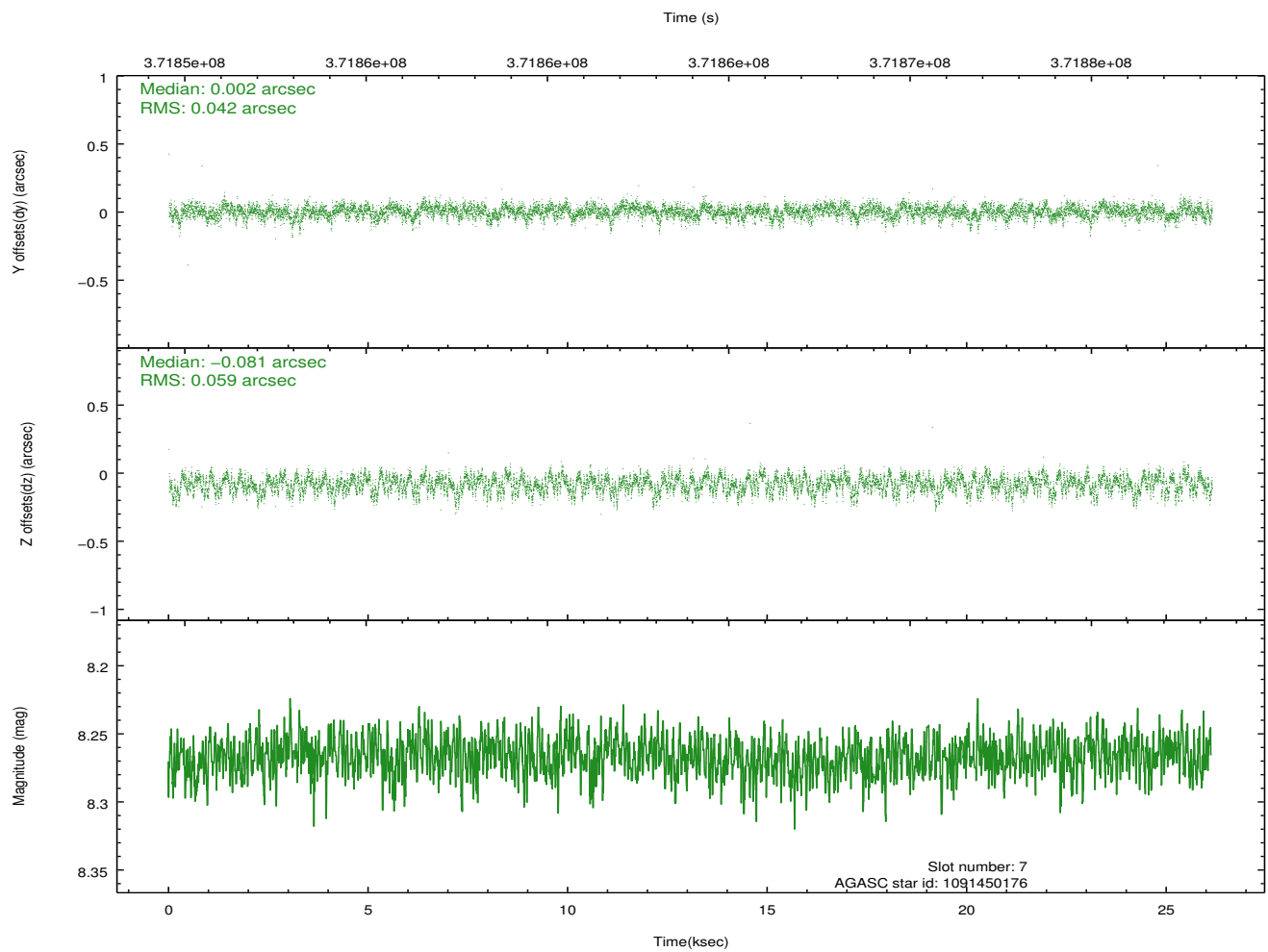
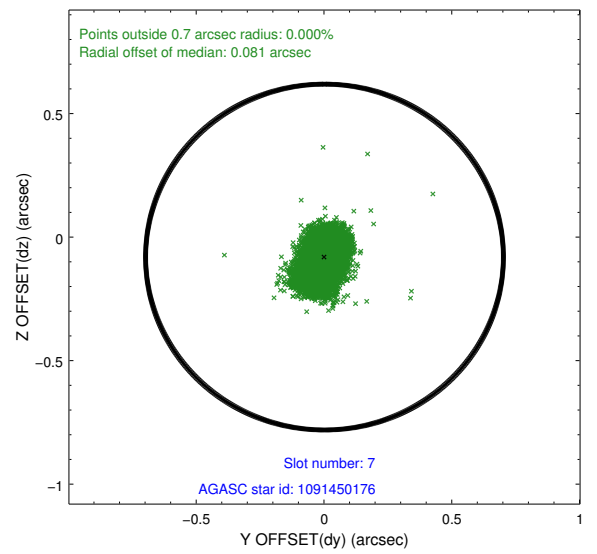
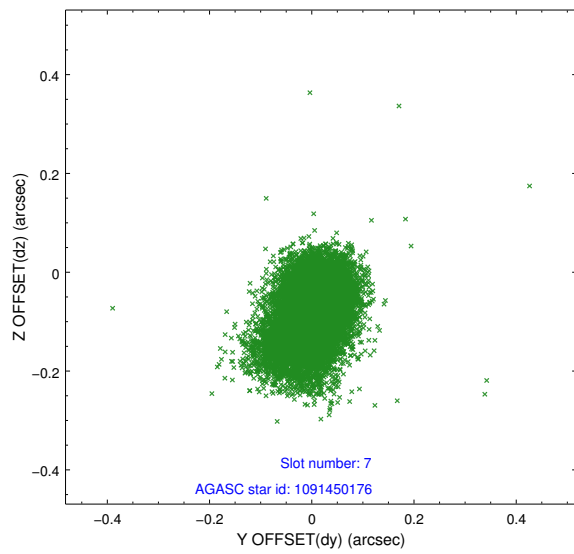
### 2.4.3 Slot 5



### 2.4.4 Slot 6

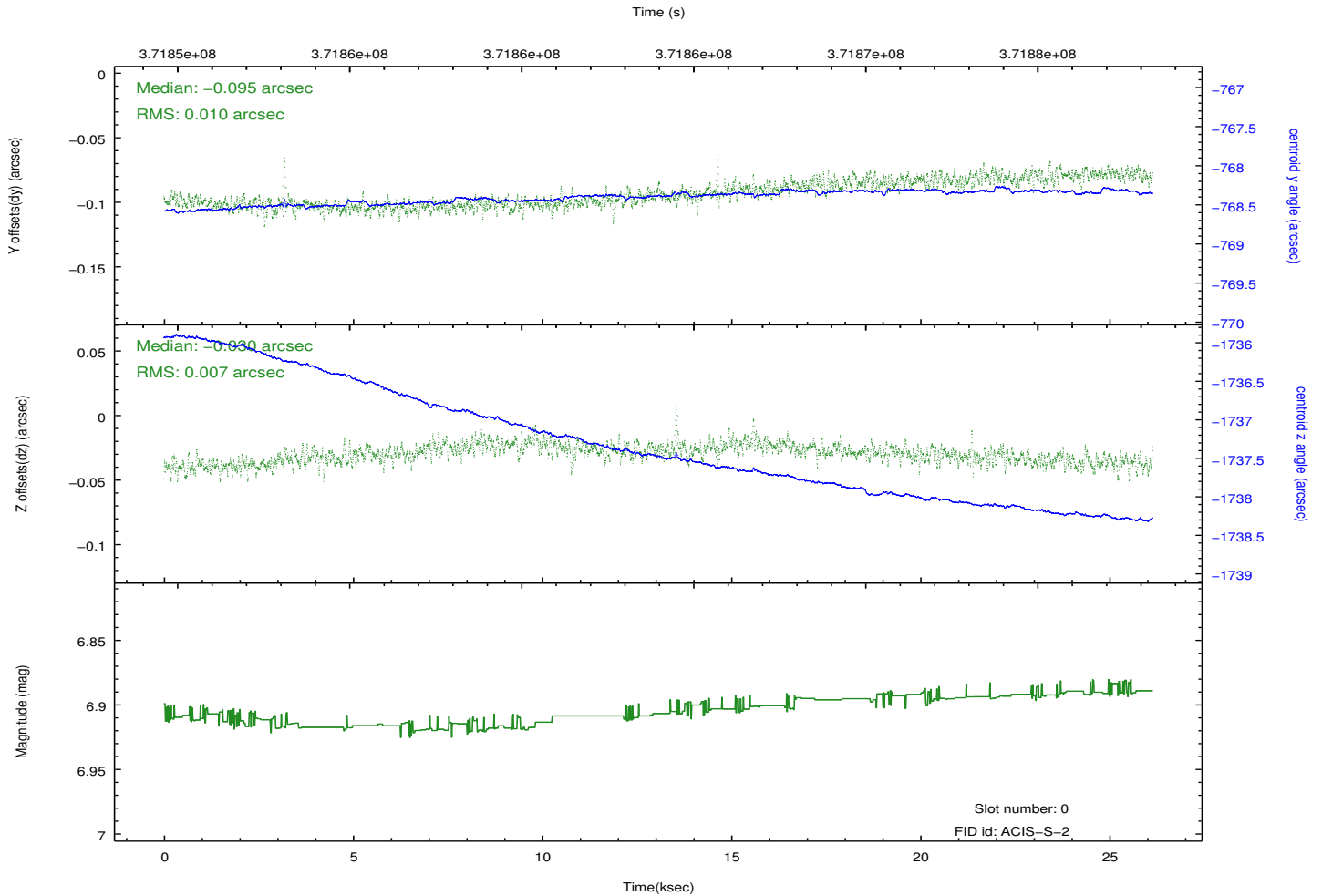
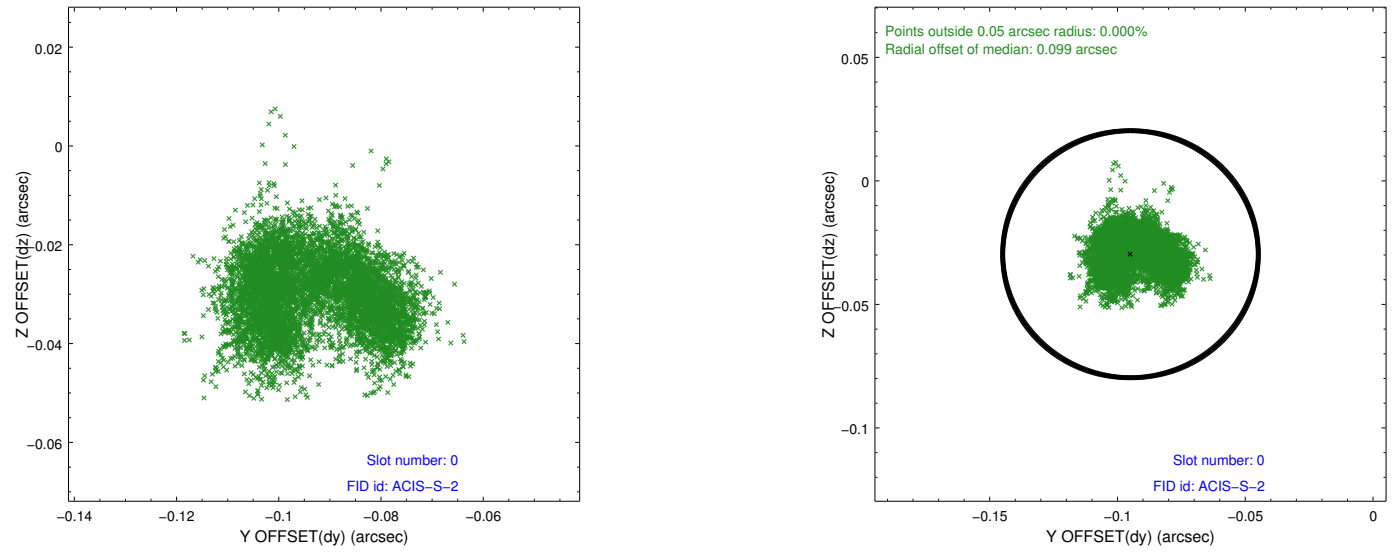


## 2.4.5 Slot 7

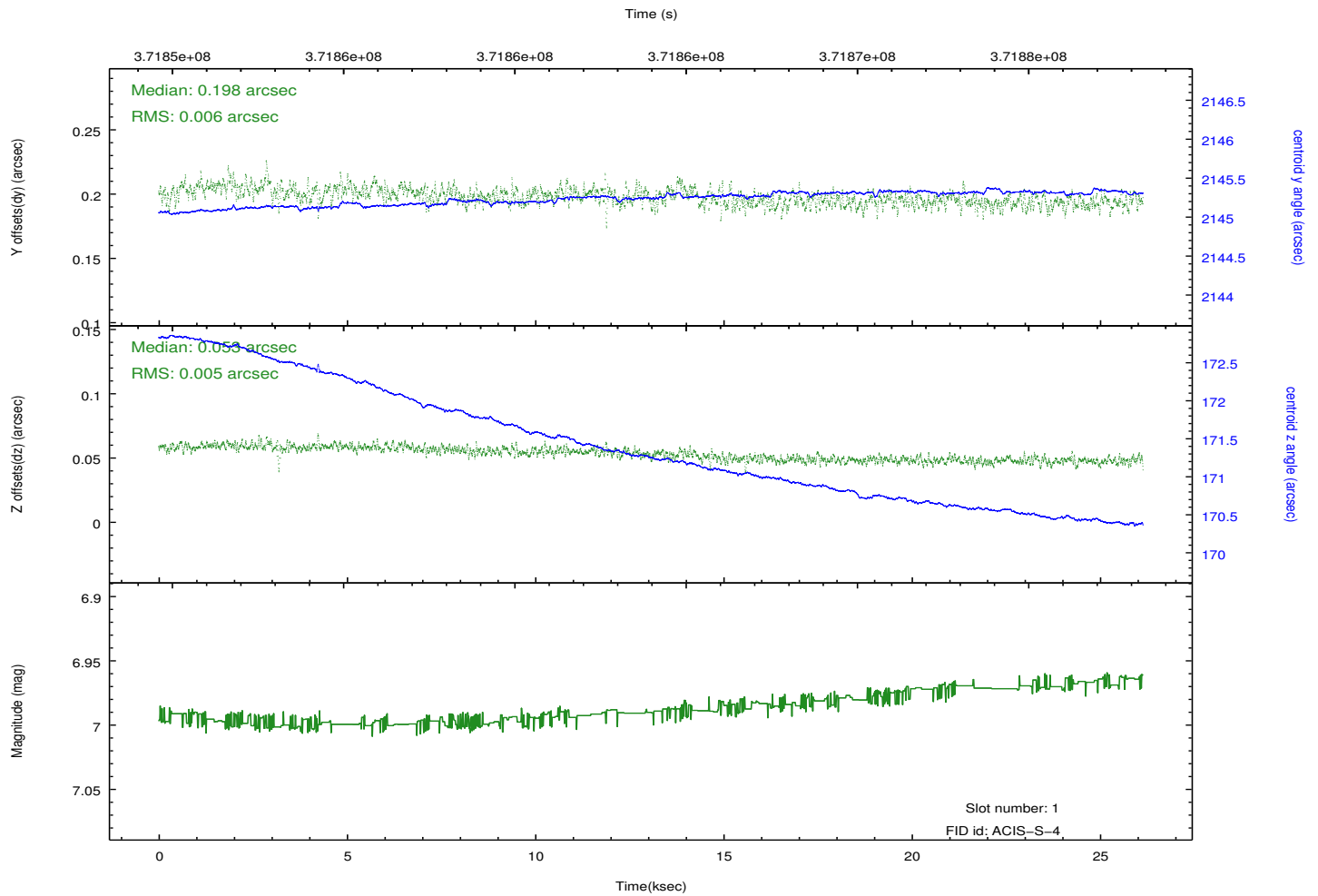
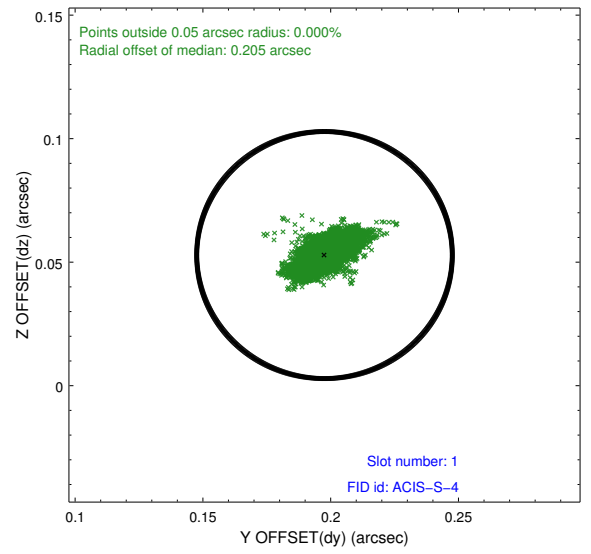
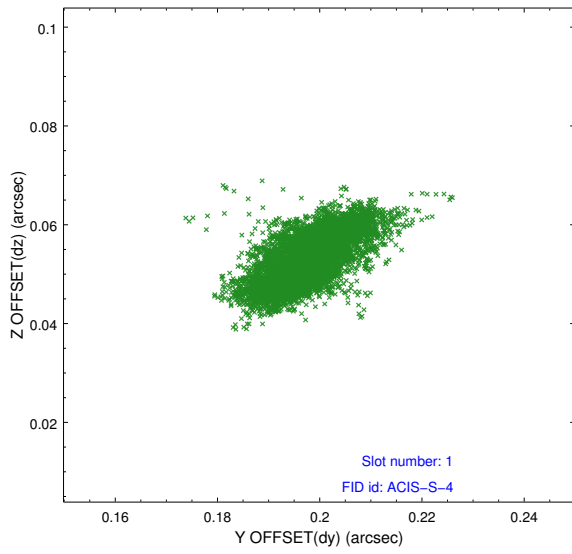


## 2.5 FID Slots

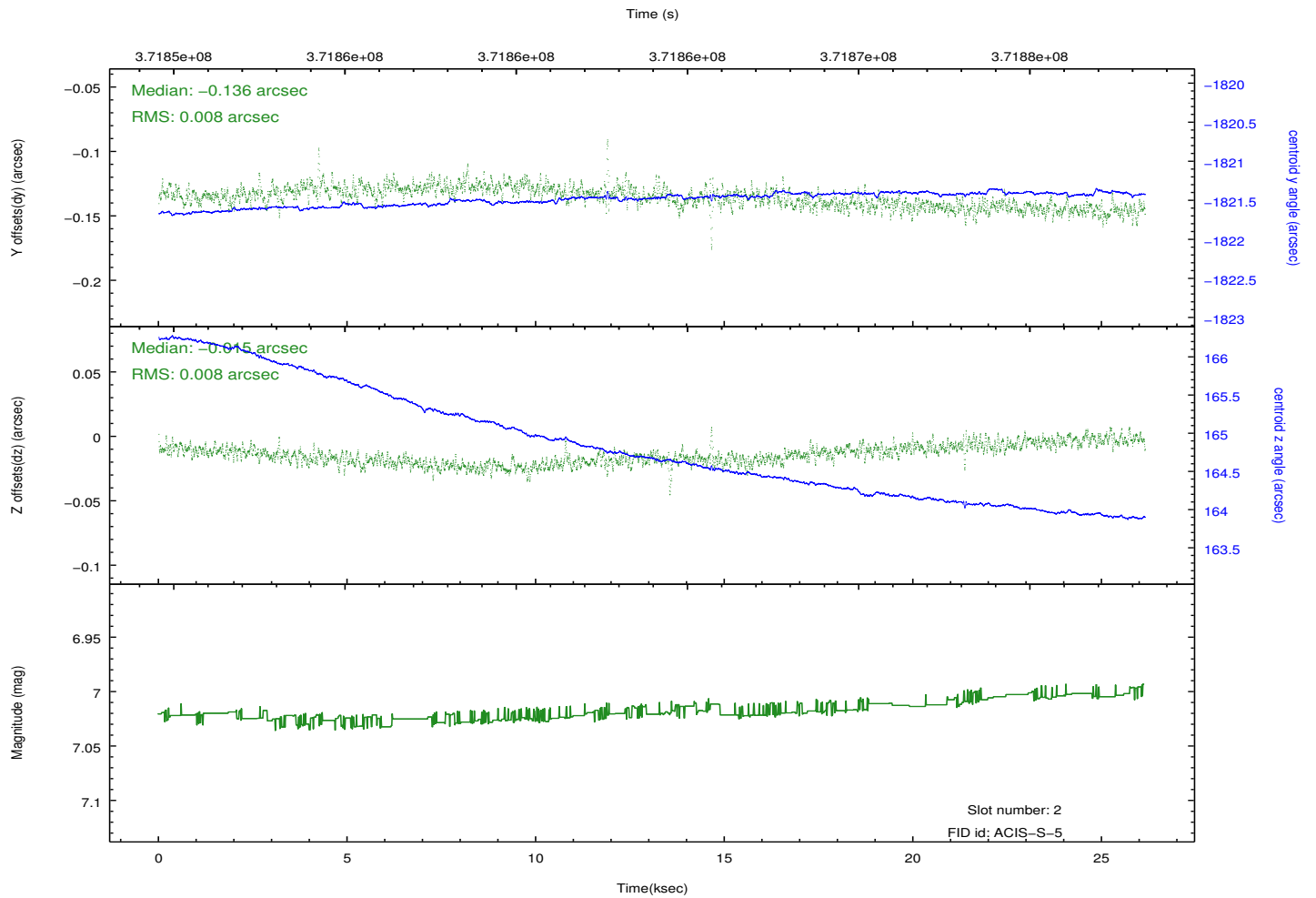
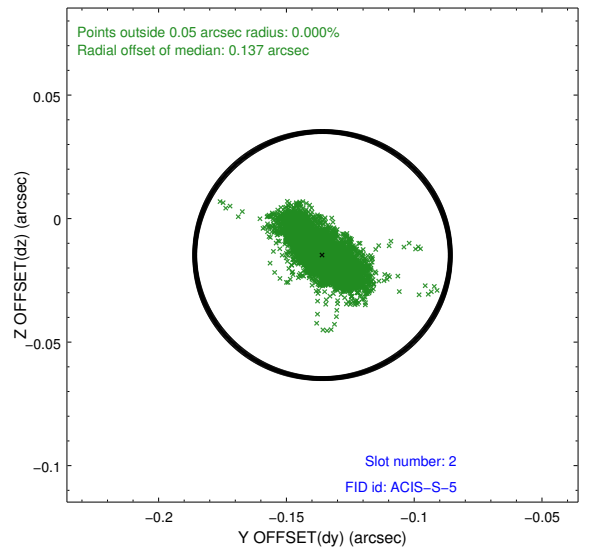
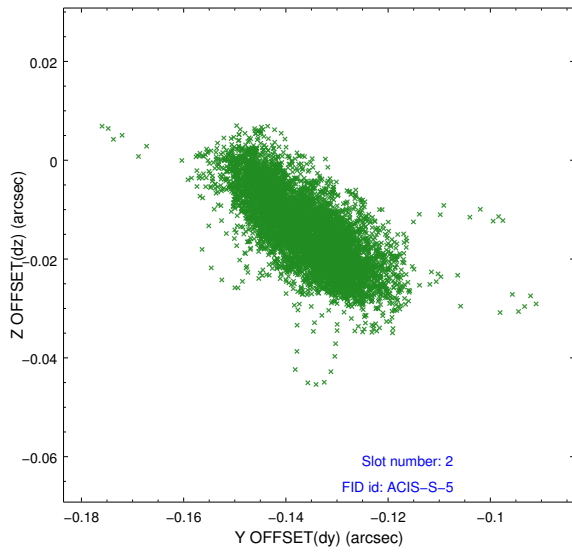
### 2.5.1 Slot 0



## 2.5.2 Slot 1



### 2.5.3 Slot 2



# A Summary

## A.1 Status

V&V Scientist	Jen Lauer
V&V Date (YYYY-MM-DD)	2012.06.19
V&V Edition	1
V&V Disposition and Status	OK
V&V Charge Time	26.139200201035

## A.2 Comments

Window constraint met.