

V&V Reference Report

L2 ASCDS Version : 8.4.5

Observation 12016 - L2 Version 2
Chandra X-Ray Center

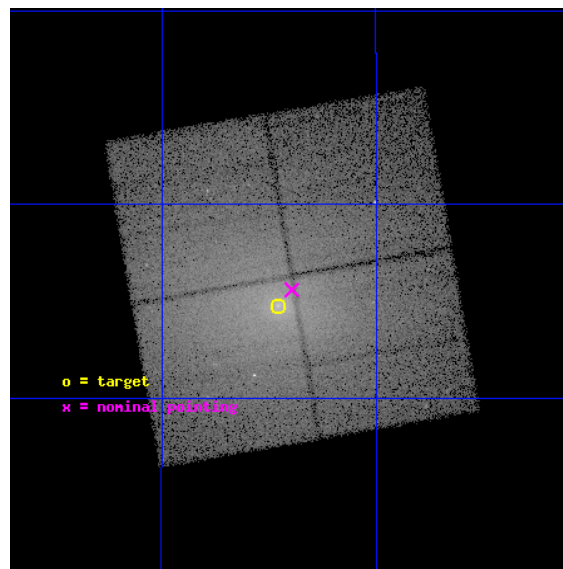
L2 Processing Date : Jun 16 2012

Contents

1	Front	2
2	OBI	3
2.1	OBI	3
2.1.1	Images	3
2.1.2	Bias	3
2.1.3	Parameters	4
2.1.4	Events	4
2.2	Compared Parameters	5
2.3	Aspect	6
2.4	Star Slots	9
2.4.1	Slot 3	9
2.4.2	Slot 4	10
2.4.3	Slot 5	11
2.4.4	Slot 6	12
2.4.5	Slot 7	13
2.5	FID Slots	14
2.5.1	Slot 0	14
2.5.2	Slot 1	15
2.5.3	Slot 2	16
A	Summary	17
A.1	Status	17
A.2	Comments	17

1 Front

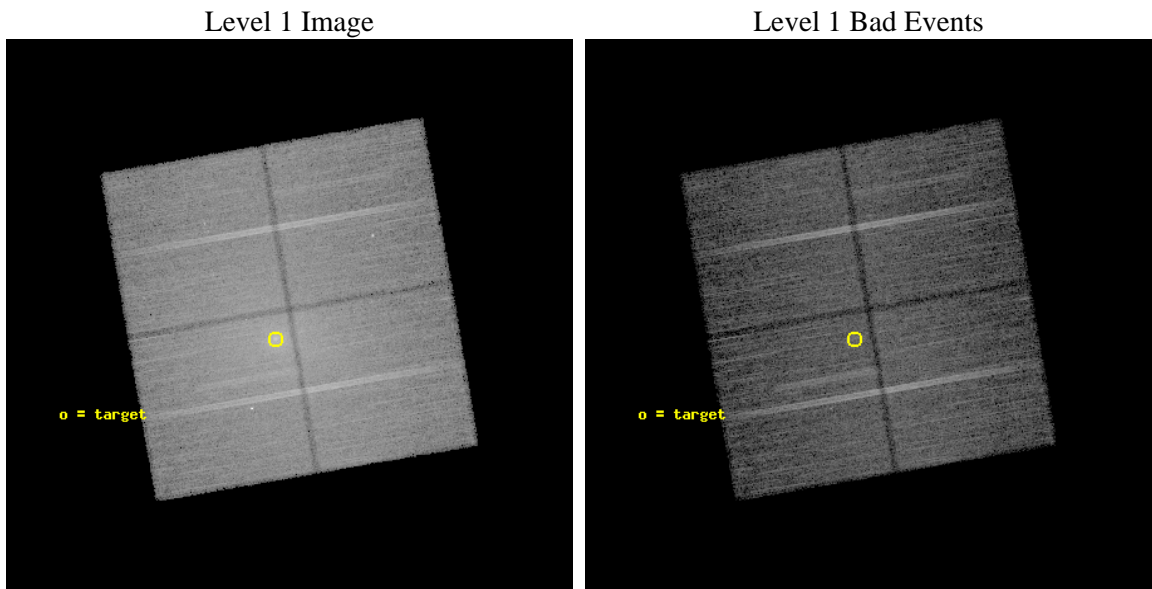
seq_num	800857	Sequence number
obs_id	12016	Observation id
title	Testing AGN feedback with AWM7	Proposal title
observer	Dr Jeremy Sanders	Principal investigator
object	AWM7	Source name
dtcycle	0	
cycle	P	events from which exps? Prim/Second/Both
ra_targ	43.614583	Observer's specified target RA [deg]
dec_targ	41.579167	Observer's specified target Dec [deg]
ra_nom	43.598411100208	Nominal RA [deg]
dec_nom	41.593208915178	Nominal Dec [deg]
roll_nom	170.21940532425	Nominal Roll [deg]
revision	2	Processing version of data
ontime	22626.859183669	Sum of GTIs [s]
livetime	22331.222610783	Livetime [s]
ontime0	22626.859173834	Sum of GTIs [s]
ontime1	22626.859183788	Sum of GTIs [s]
ontime2	22630.000174046	Sum of GTIs [s]
ontime3	22626.859183669	Sum of GTIs [s]
l2events	284581	Number of level 2 events



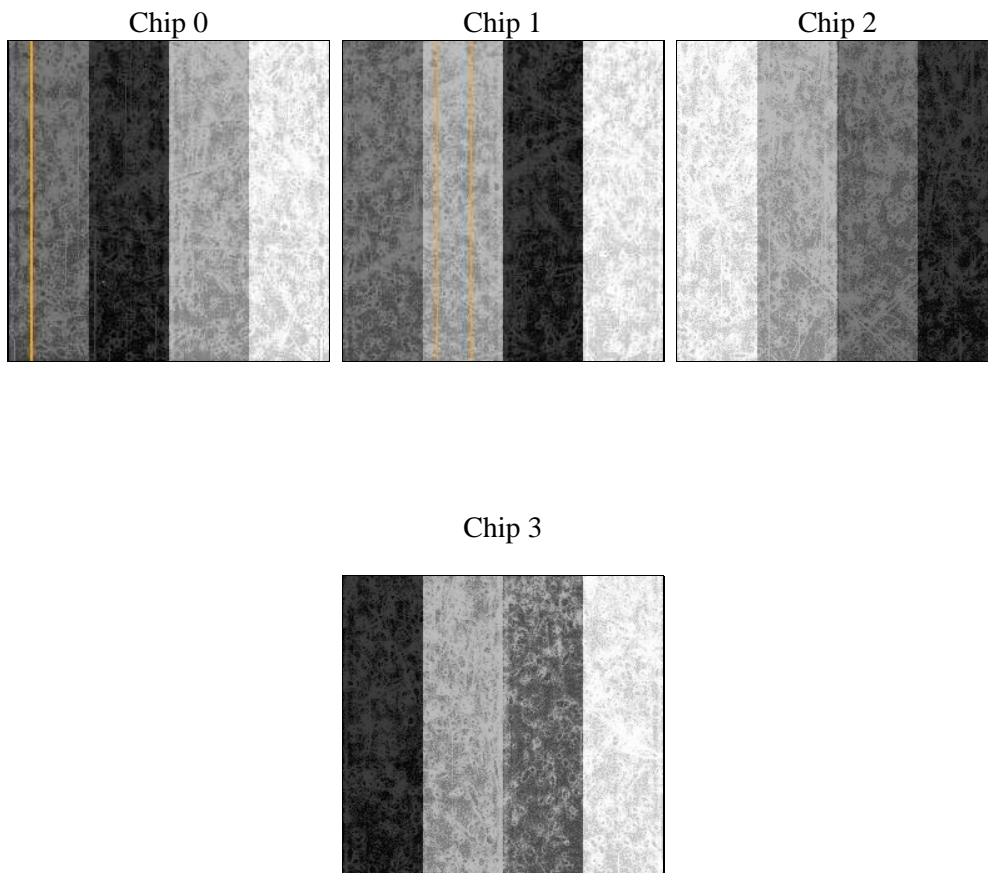
2 OBI

2.1 OBI

2.1.1 Images



2.1.2 Bias



2.1.3 Parameters

obi_num	0	Obi number	sched_exp_time	22500.000000	[s] Scheduled observation exposure time
ascdsver	8.4.5	Processing system revision	ontime	22626.859183669	Sum of GTIs [s]
caldsver	4.4.10	 	ontime0	22626.859173834	Sum of GTIs [s]
date	2012-06-16T02:14:50	Date and time of file creation	ontime1	22626.859183788	Sum of GTIs [s]
revision	2	Processing version of data	ontime2	22630.000174046	Sum of GTIs [s]
			ontime3	22626.859183669	Sum of GTIs [s]
			l1events	1030521	Number of level 1 events

2.1.4 Events

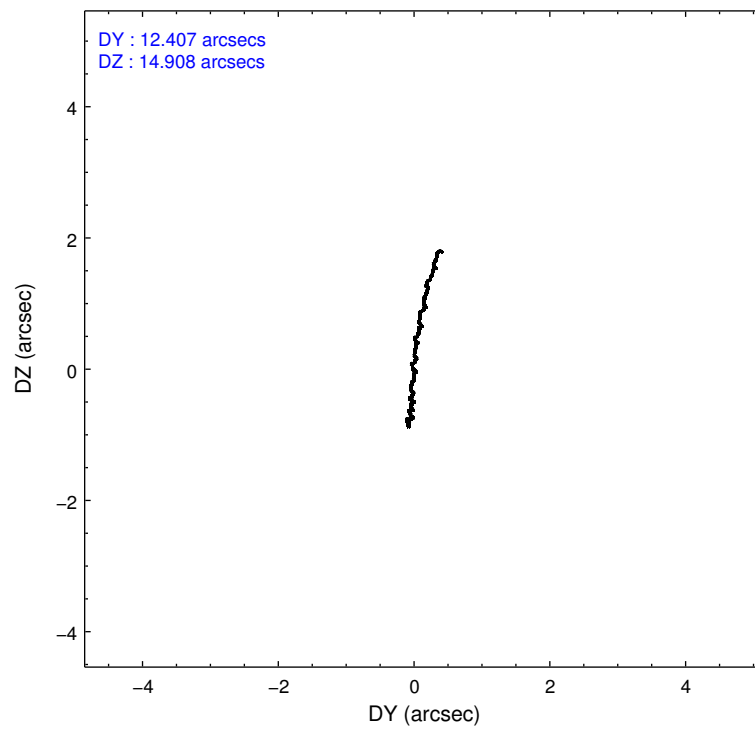
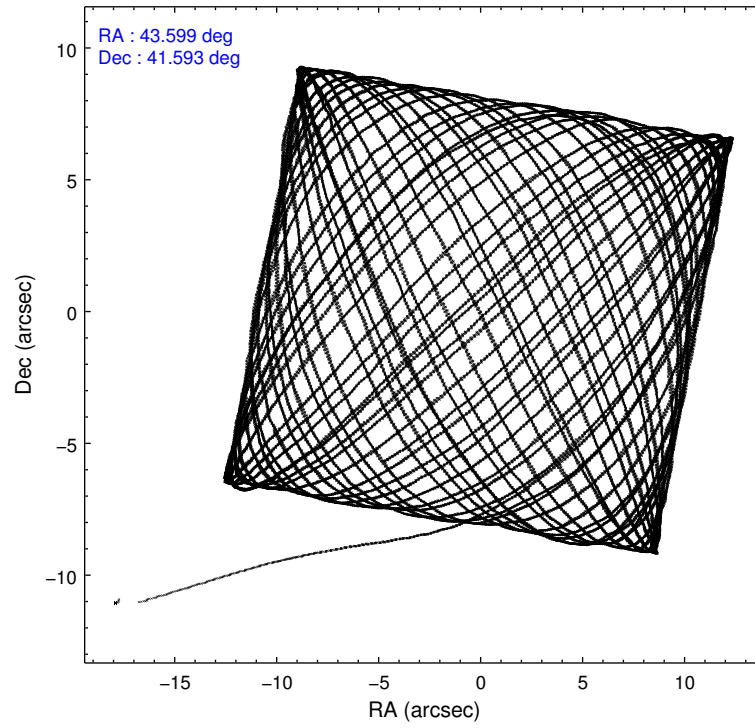
	ccd 0	ccd 1	ccd 2	ccd 3
level 1 events	218772	244412	268680	298657
rejected events	169577	169931	193357	187155
rejected %	77%	69%	71%	62%

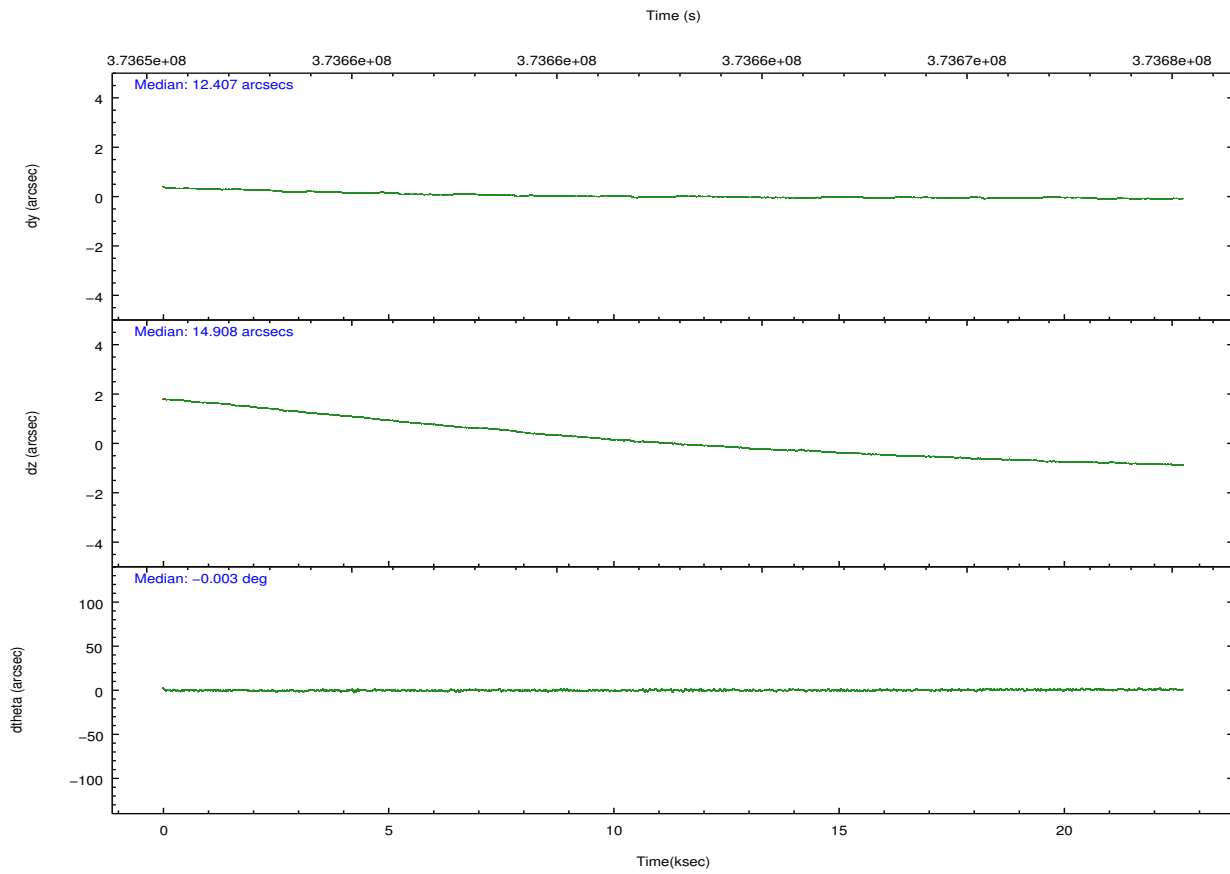
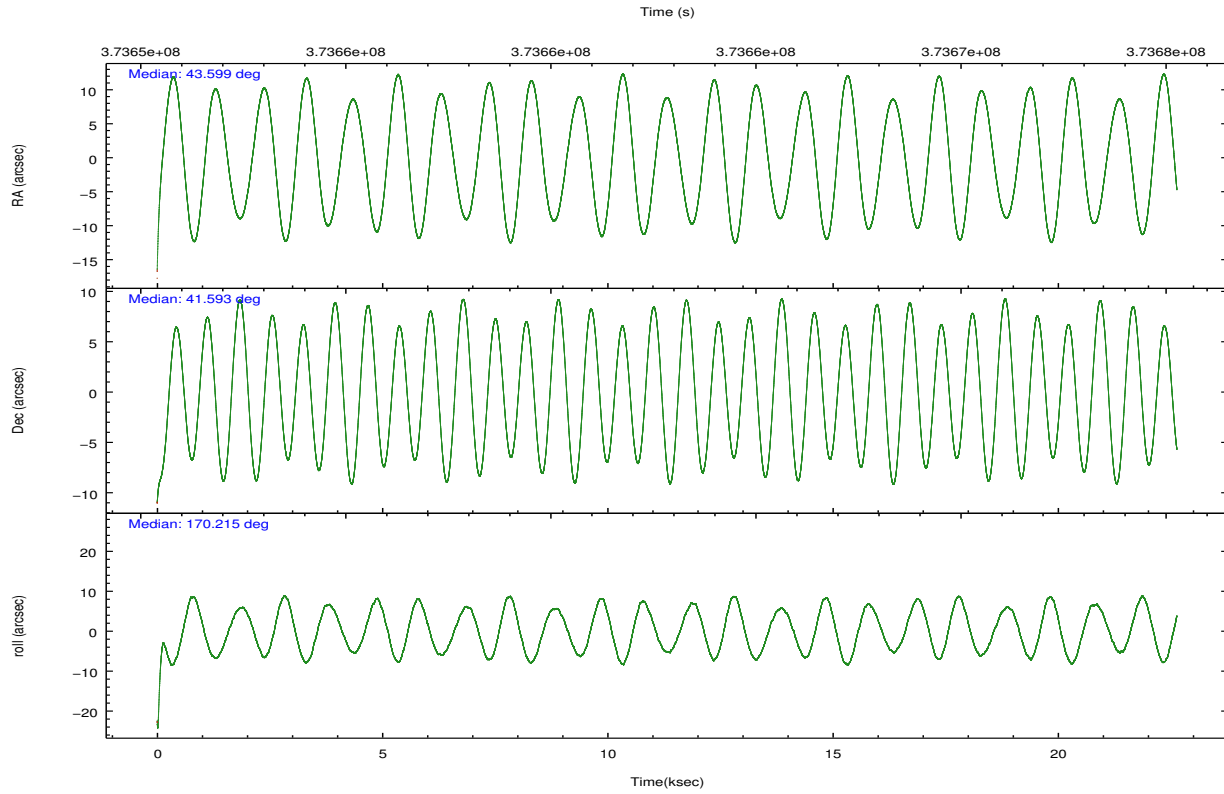
	ccd 0	ccd 1	ccd 2	ccd 3
grade 0 events	31133	51045	53368	83155
	14%	20%	19%	27%
grade 1 events	268	336	443	681
	0%	0%	0%	0%
grade 2 events	8022	10825	10334	13456
	3%	4%	3%	4%
grade 3 events	3175	3927	3829	4982
	1%	1%	1%	1%
grade 4 events	2949	3981	3851	5030
	1%	1%	1%	1%
grade 5 events	7608	8502	7223	8967
	3%	3%	2%	3%
grade 6 events	4783	5967	5080	6385
	2%	2%	1%	2%
grade 7 events	160834	159829	184552	176001
	73%	65%	68%	58%

2.2 Compared Parameters

Parameter	Planned	Actual	Parameter	Planned	Actual
Instrument	ACIS	ACIS	Obspar format version number	7	7
Detector	ACIS-0123	ACIS-0123	Obspar file type	PREDICTED	ACTUAL
Grating	NONE	NONE	Obspar update status	NONE	UPDATED
Data mode	VFAINT	VFAINT	Number of optional ACIS chips dropped	0	0
Observation mode	POINTING	POINTING	On-chip summing requested	N	N
[deg] Pointing RA	43.632830	43.59841110020795	Subarray requested	NONE	NONE
[deg] Pointing Dec	41.602825	41.5932089151779	Alternating exposures requested	N	N
[deg] Pointing Roll	169.987885	170.2194053242525	[s] Primary exposure time	0.000000	3.1
[mm] SIM focus pos	-0.782348	-0.7809083437167272			
[mm] SIM defocus	0	0.001439871863259334			
[mm] SIM translation stage pos	-233.592463	-233.5874344608287			
[mm] SIM translation stage offset	0	-0.005018542100998502			
[s] Observation start time (MET)	373651652.184000	373650369.89482			
Observation start date	2009-11-03T16:06:26	2009-11-03T15:46:09			
[s] Observation end time (MET)	373674152.184000	373674799.74605			
Observation end date	2009-11-03T22:21:26	2009-11-03T22:33:19			
Read mode	TIMED	TIMED			

2.3 Aspect



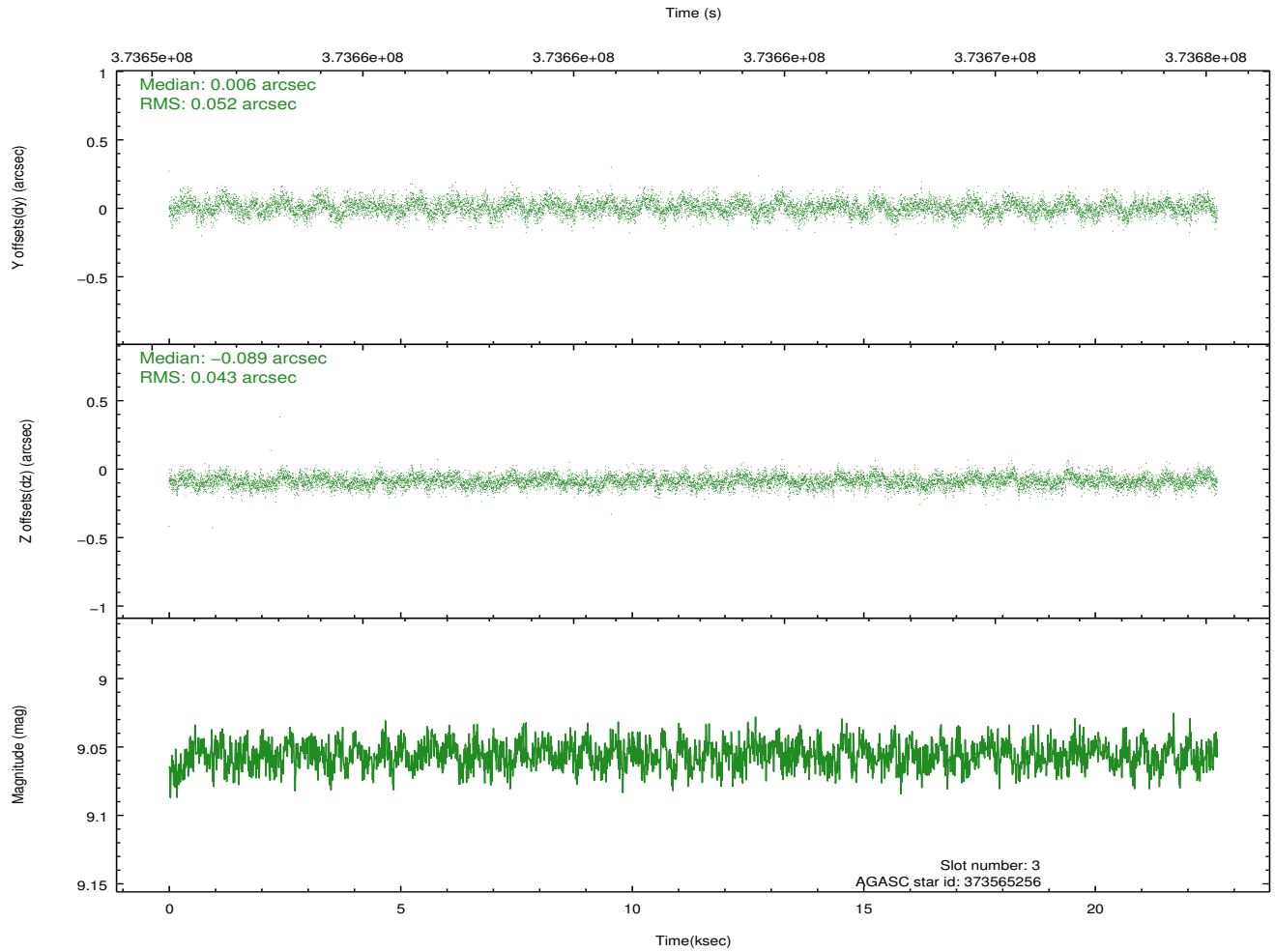
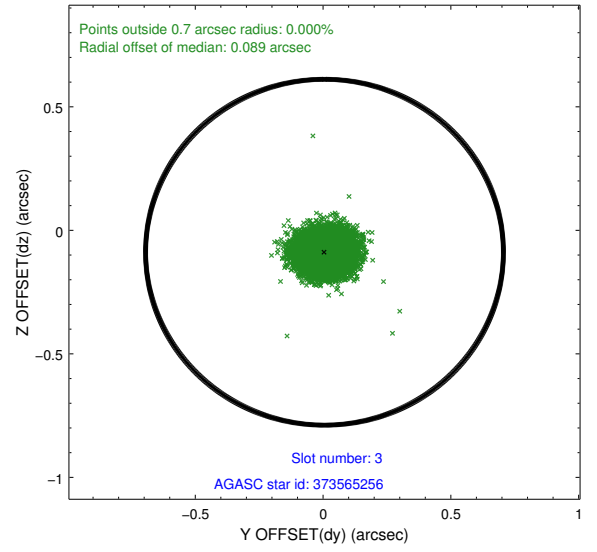
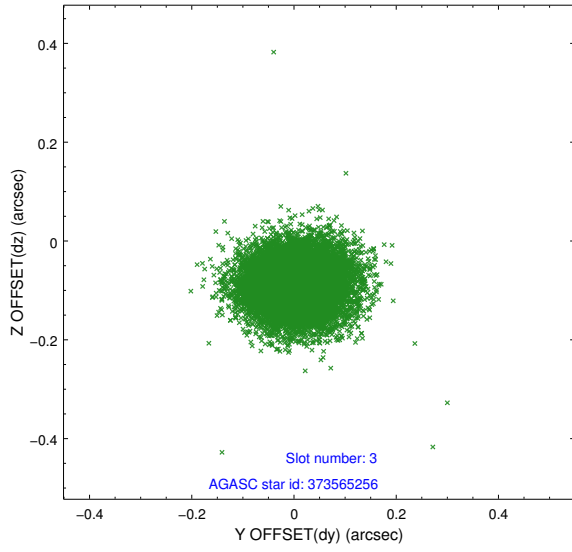


Slot Statistics

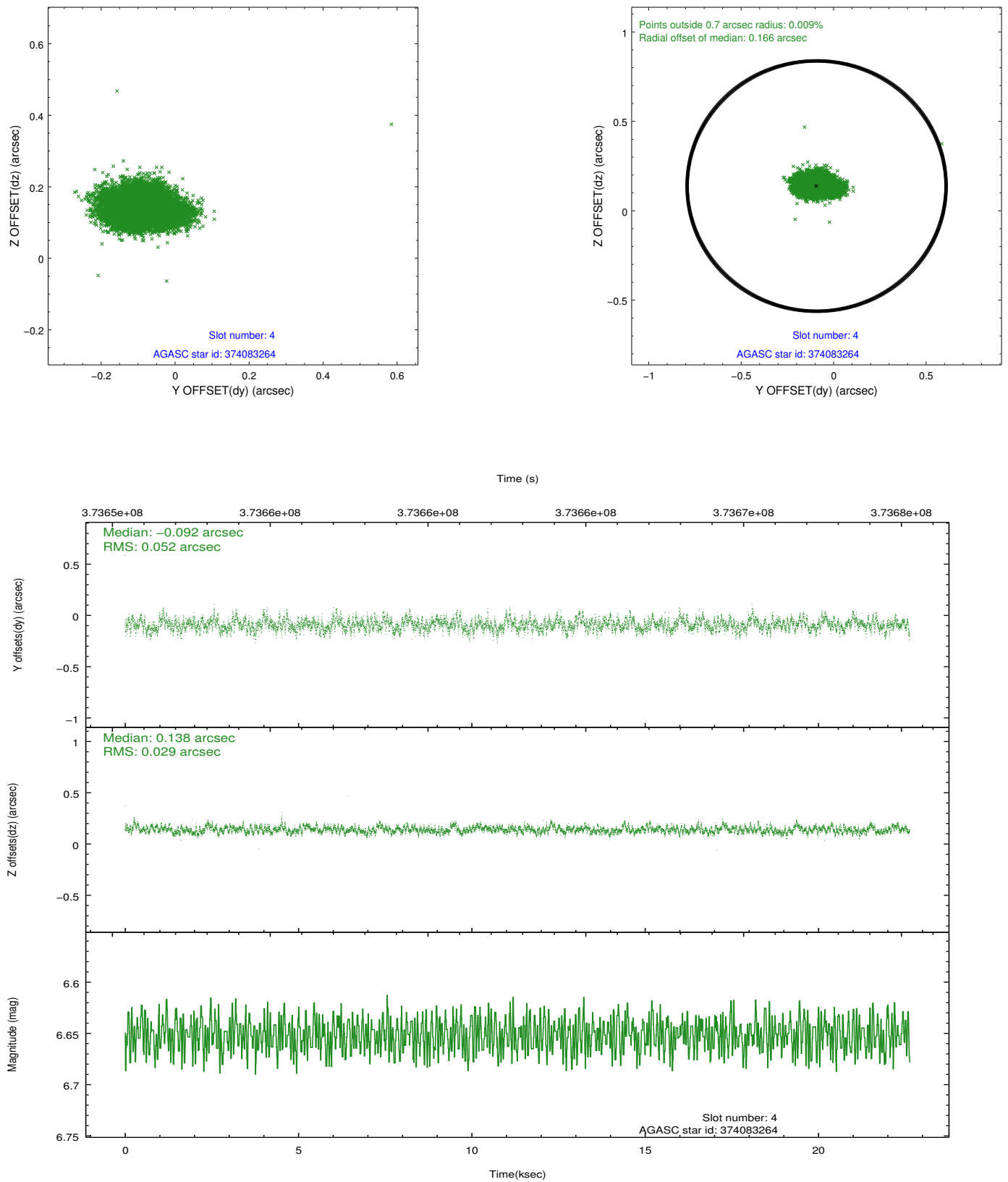
slot	status	id	mag	n_pts	med_dy	med_dz	dr1	dr2	ra	dec	mean_y	mean_z
0	FID	ACIS-I-2	6.93	5520	-0.084	-0.079	0.018	0.033	0.000000	0.000000	-767.17	-845.14
1	FID	ACIS-I-4	6.93	5520	0.192	0.072	0.011	0.019	0.000000	0.000000	2147.08	1061.14
2	FID	ACIS-I-5	7.00	5520	-0.208	0.076	0.013	0.021	0.000000	0.000000	-1820.95	1059.13
3	GUIDE	373565256	9.06	11038	0.006	-0.089	0.071	0.117	44.105113	41.168282	-1531.42	1314.71
4	GUIDE	374083264	6.65	11043	-0.092	0.138	0.062	0.107	43.093662	42.020961	1682.85	-1235.45
5	GUIDE	374087680	8.99	11035	-0.024	0.002	0.099	0.152	43.266373	41.841880	1118.22	-678.29
6	GUIDE	373560576	8.90	11034	0.068	0.003	0.076	0.123	44.009880	41.184081	-1267.77	1305.32
7	GUIDE	374084672	9.20	11034	0.040	-0.059	0.096	0.156	42.731967	41.662055	2425.56	199.34

2.4 Star Slots

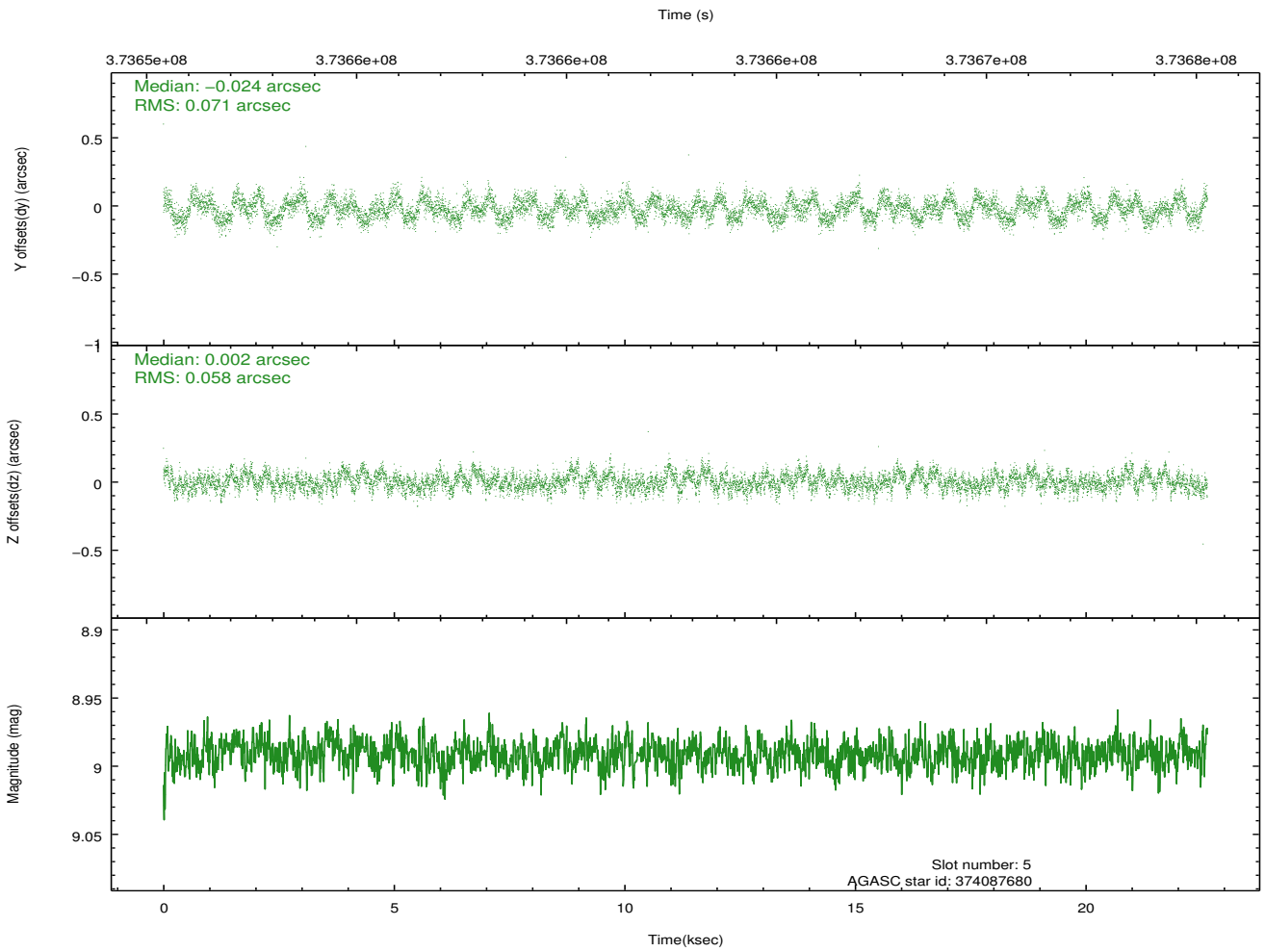
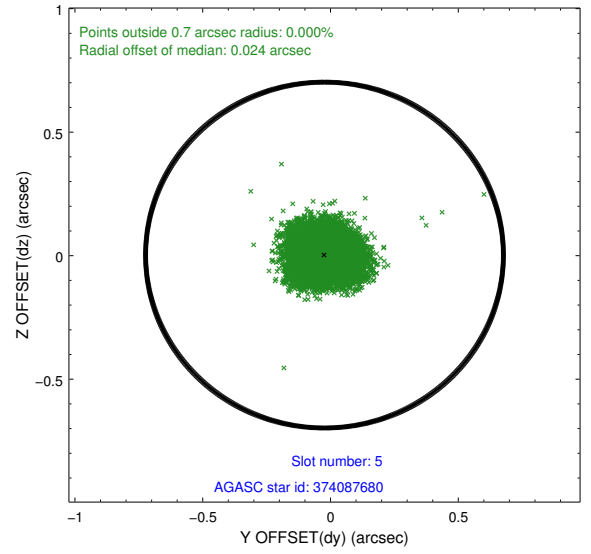
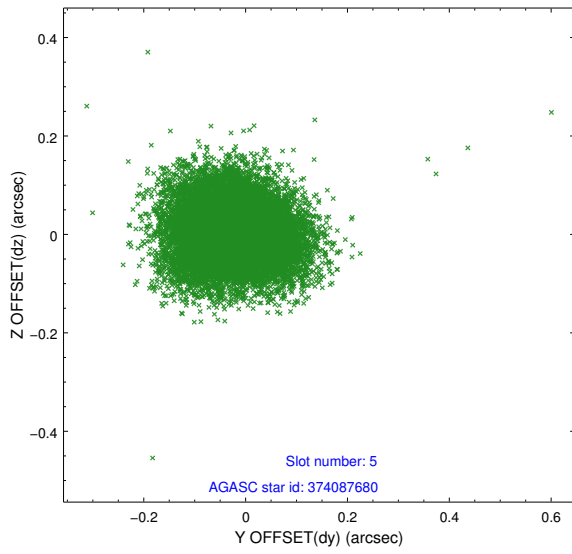
2.4.1 Slot 3



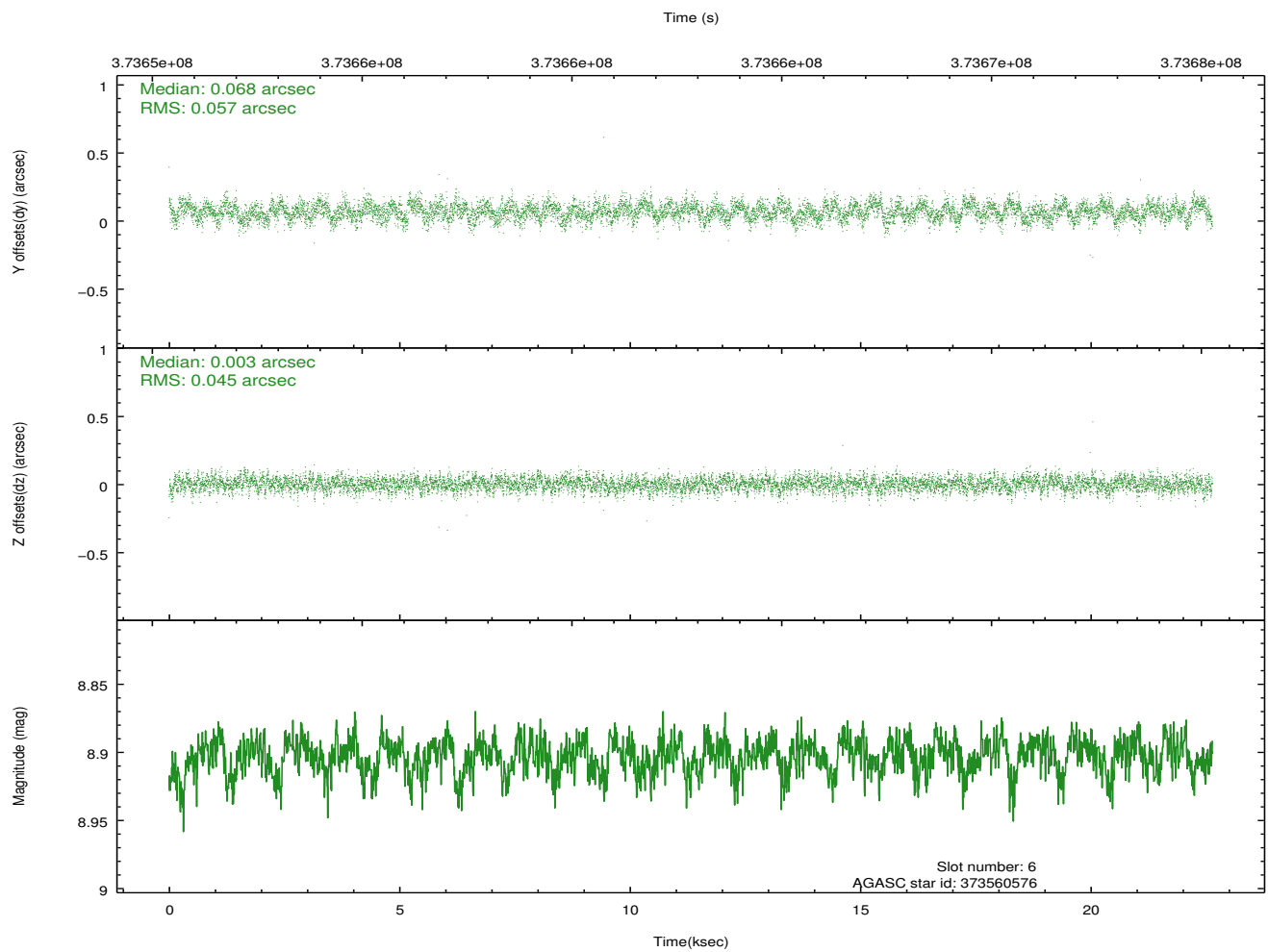
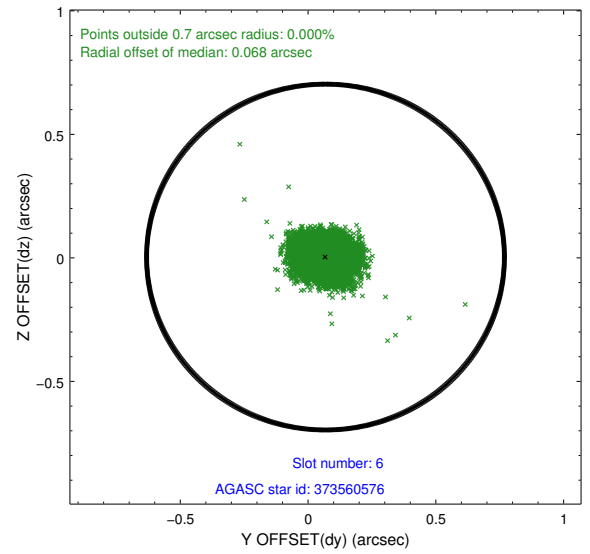
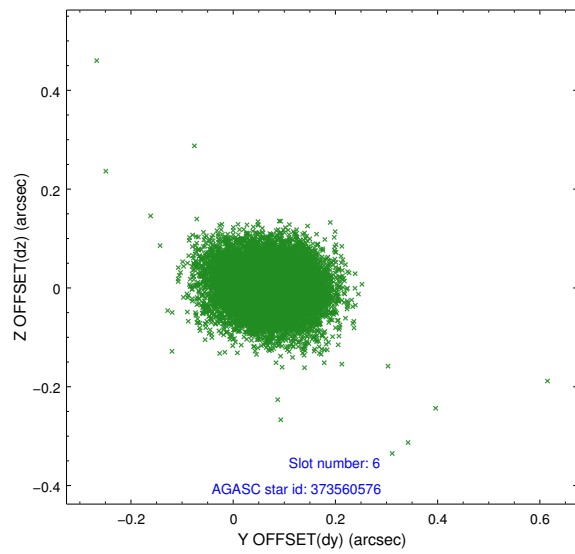
2.4.2 Slot 4



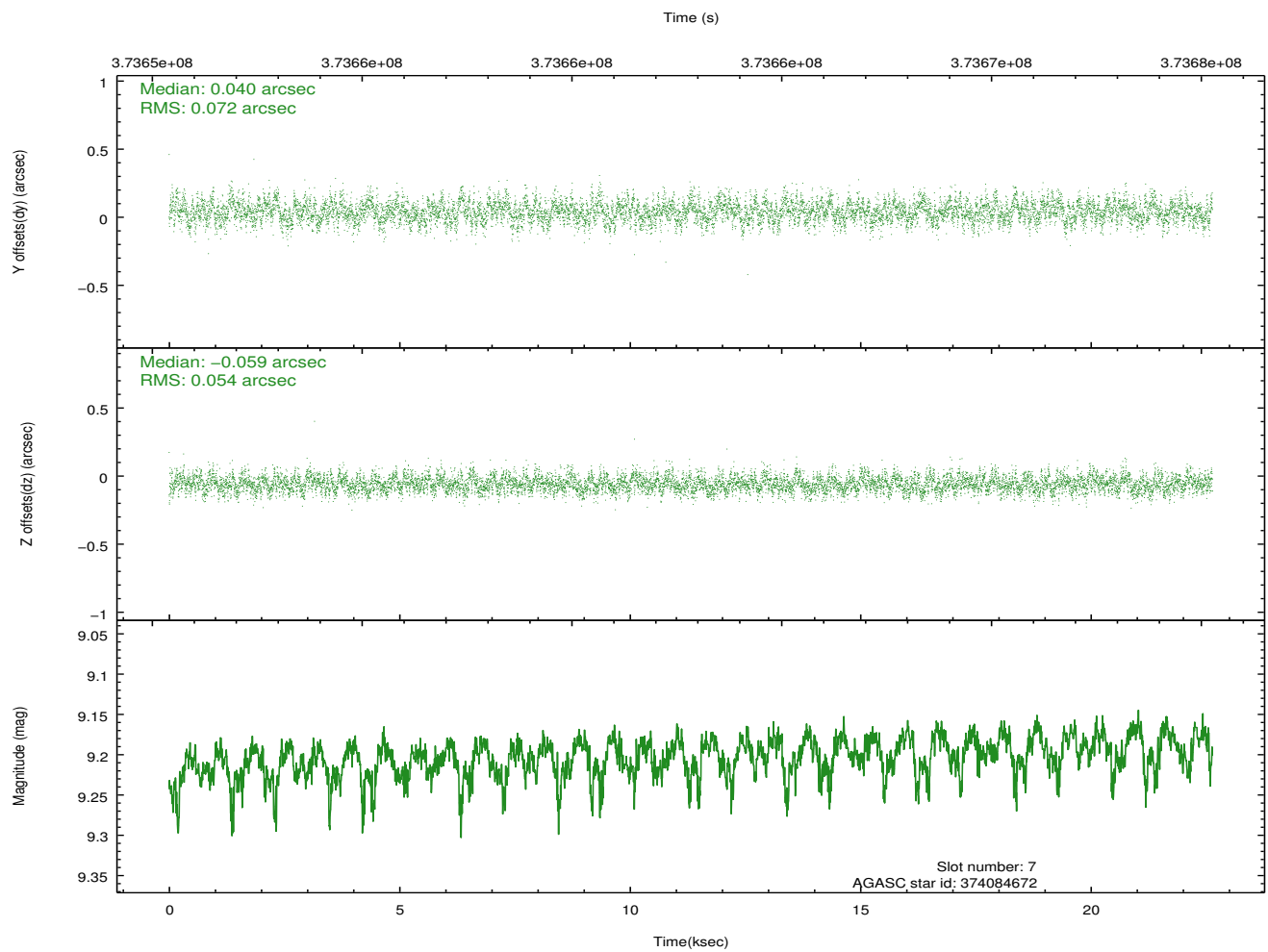
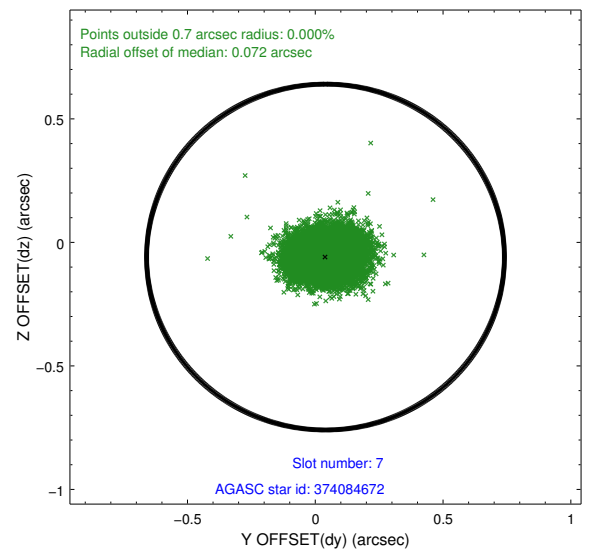
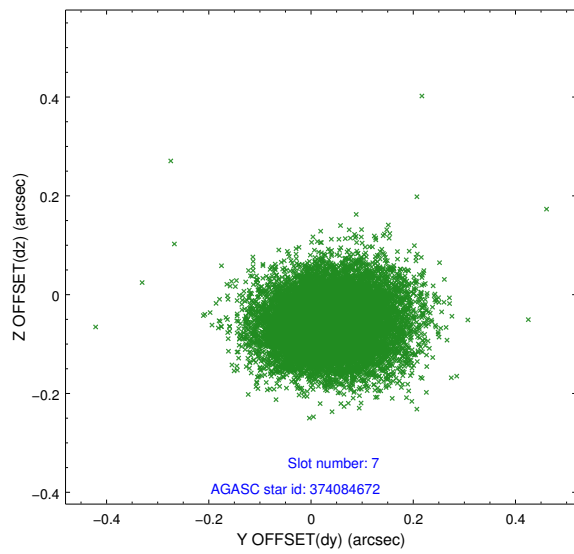
2.4.3 Slot 5



2.4.4 Slot 6

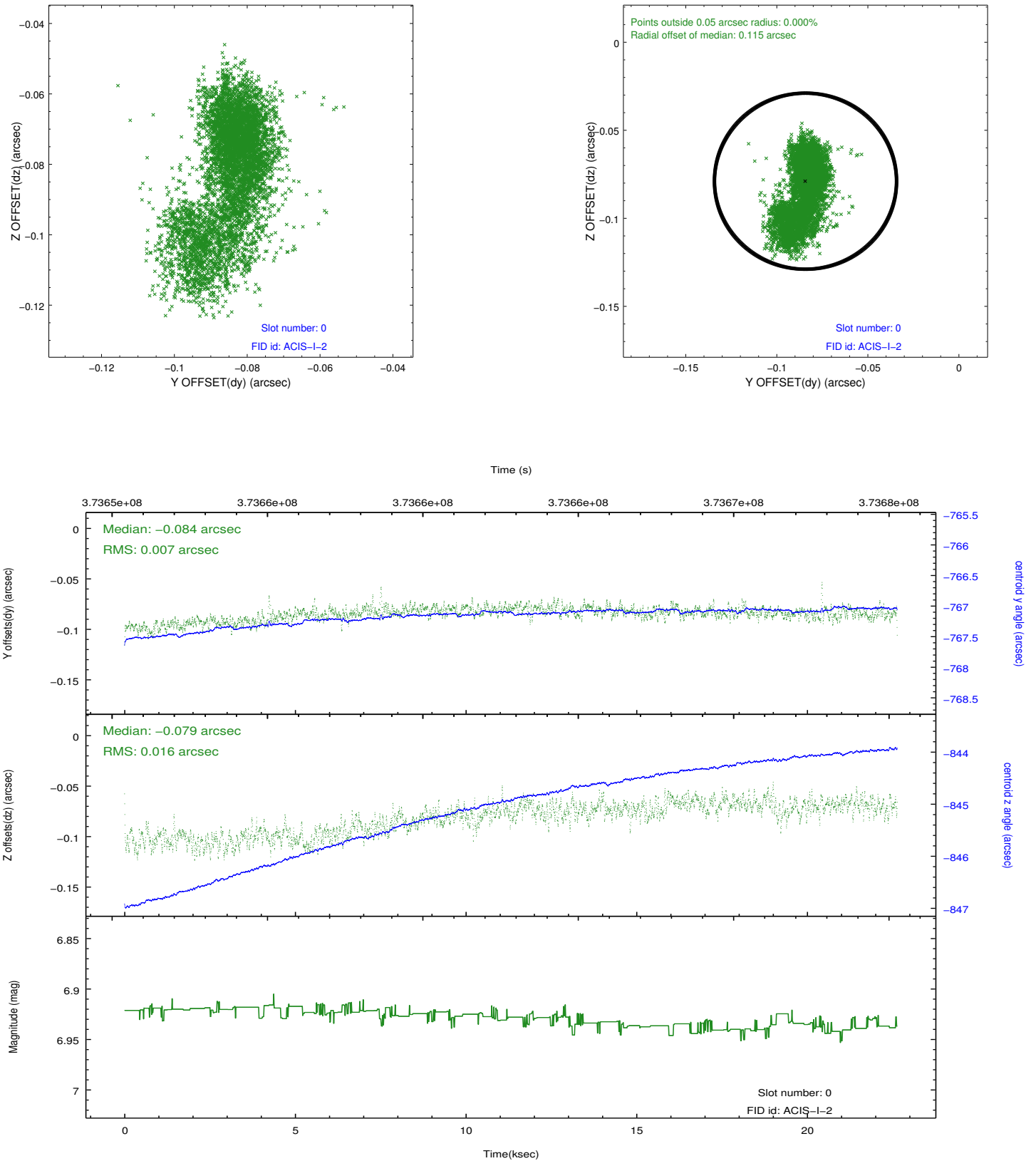


2.4.5 Slot 7

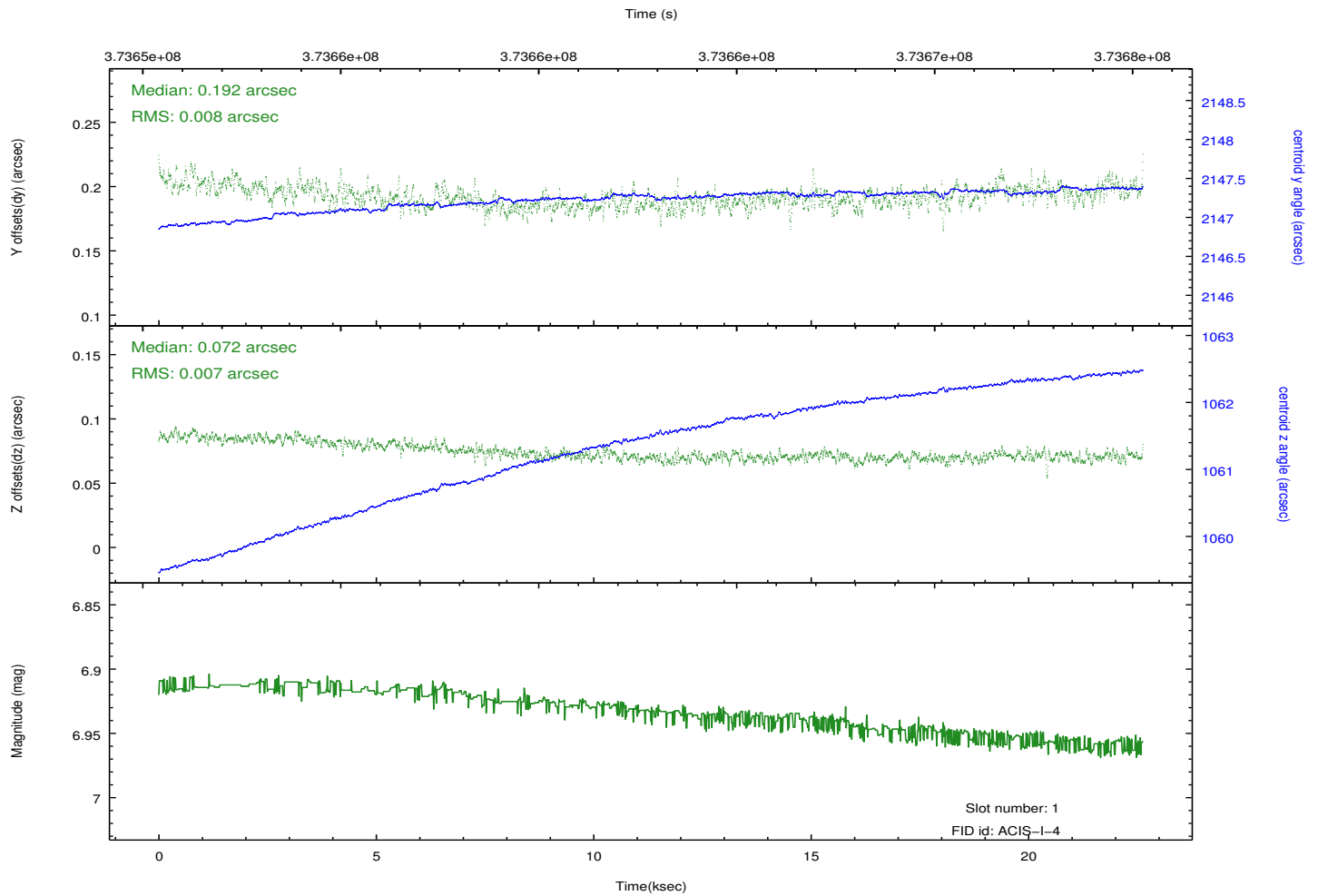
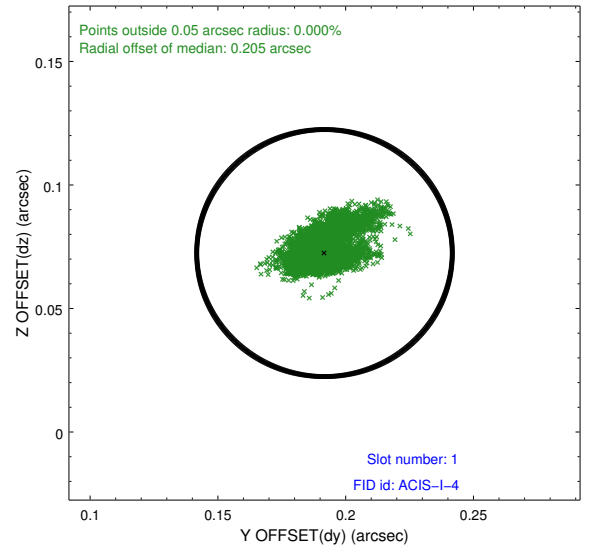
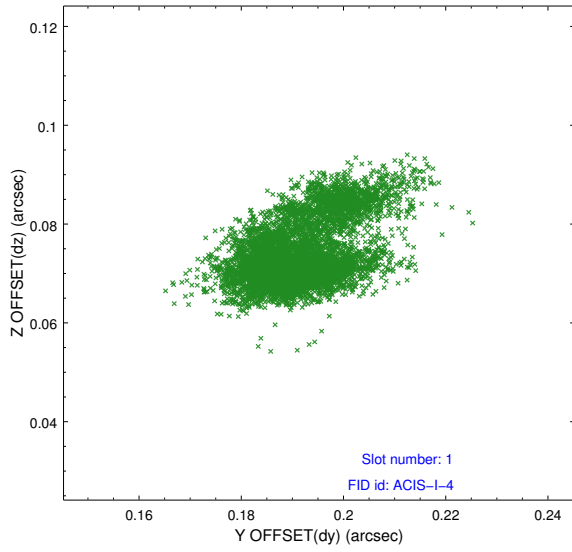


2.5 FID Slots

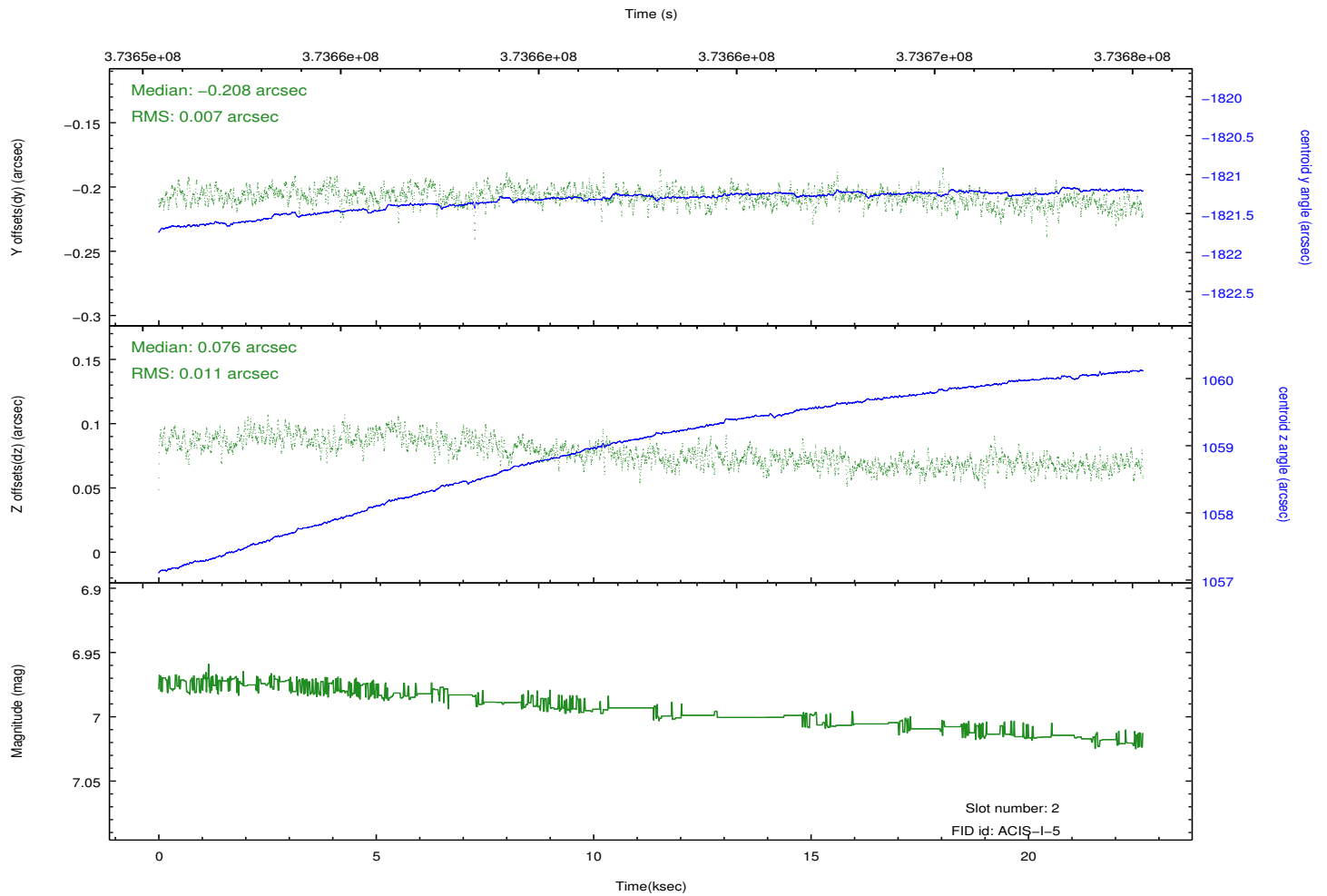
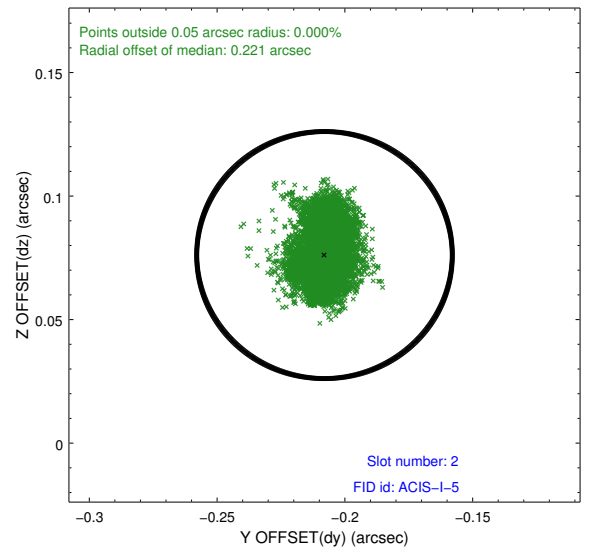
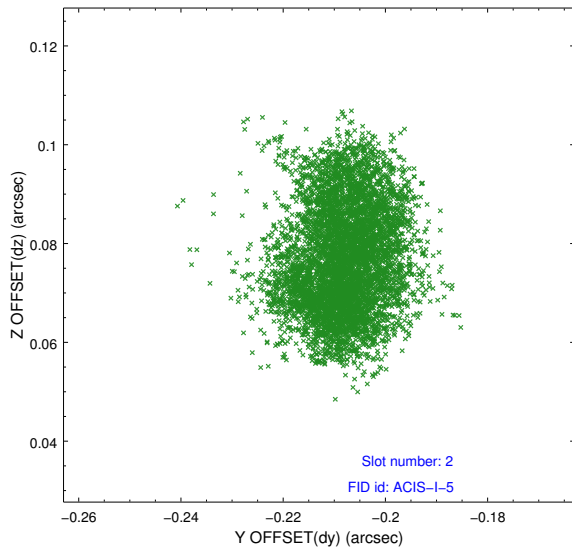
2.5.1 Slot 0



2.5.2 Slot 1



2.5.3 Slot 2



A Summary

A.1 Status

V&V Scientist	Beth Sundheim
V&V Date (YYYY-MM-DD)	2012.06.20
V&V Edition	1
V&V Disposition and Status	OK
V&V Charge Time	22.626859183669

A.2 Comments

Joint proposal with NRAO.