

V&V Reference Report

L2 ASCDS Version : 8.4.5

Observation 12096 - L2 Version 2
Chandra X-Ray Center

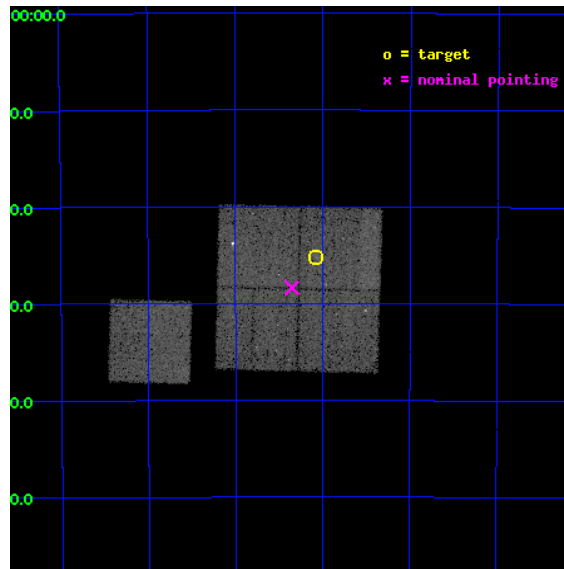
L2 Processing Date : Jun 21 2012

Contents

1	Front	2
2	OBI	3
2.1	OBI	3
2.1.1	Images	3
2.1.2	Bias	3
2.1.3	Parameters	4
2.1.4	Events	4
2.2	Compared Parameters	5
2.3	Aspect	6
2.4	Star Slots	9
2.4.1	Slot 3	9
2.4.2	Slot 4	10
2.4.3	Slot 5	11
2.4.4	Slot 6	12
2.4.5	Slot 7	13
2.5	FID Slots	14
2.5.1	Slot 0	14
2.5.2	Slot 1	15
2.5.3	Slot 2	16
A	Summary	17
A.1	Status	17
A.2	Comments	17

1 Front

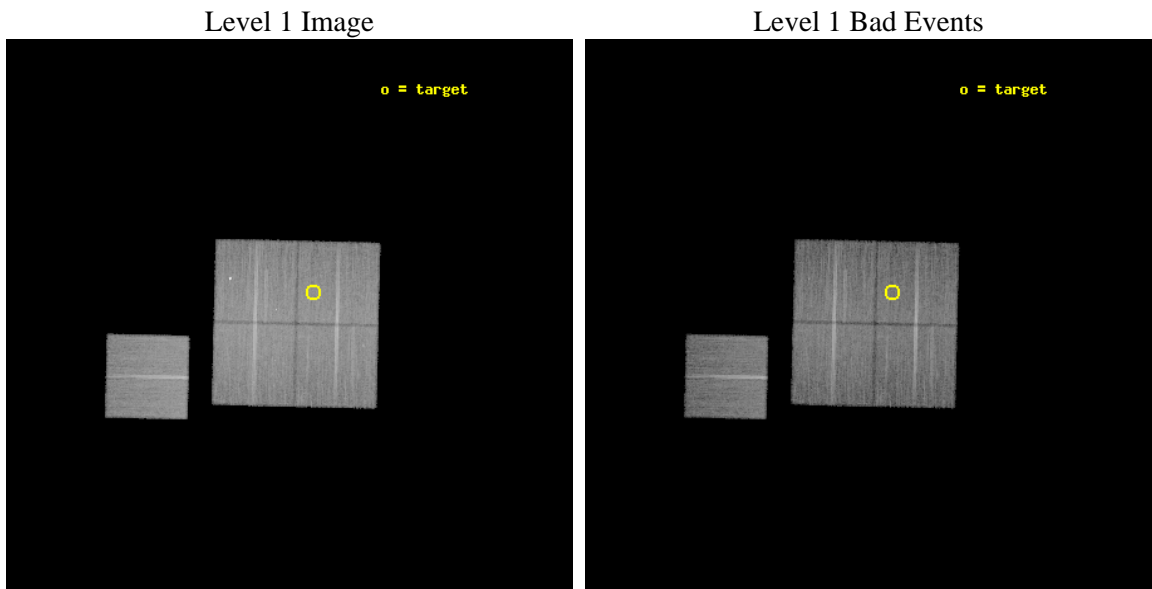
seq_num	800921	Sequence number
obs_id	12096	Observation id
title	CHandra Extended Cluster Cosmology Sample (CHECCS)	Proposal title
observer	Dr. Stephen Murray	Principal investigator
object	XMMUJ0236-5225	Source name
dtycle	0	
cycle	P	events from which exps? Prim/Second/Both
ra_targ	39.02125	Observer's specified target RA [deg]
dec_targ	-52.419444	Observer's specified target Dec [deg]
ra_nom	39.088478609881	Nominal RA [deg]
dec_nom	-52.473014954663	Nominal Dec [deg]
roll_nom	271.36196557278	Nominal Roll [deg]
revision	2	Processing version of data
ontime	22140.200170279	Sum of GTIs [s]
livetime	21850.922155676	Livetime [s]
ontime0	22140.200170279	Sum of GTIs [s]
ontime1	22140.200170279	Sum of GTIs [s]
ontime2	22140.200170279	Sum of GTIs [s]
ontime3	22130.777219355	Sum of GTIs [s]
ontime6	22130.777219415	Sum of GTIs [s]
l2events	86708	Number of level 2 events



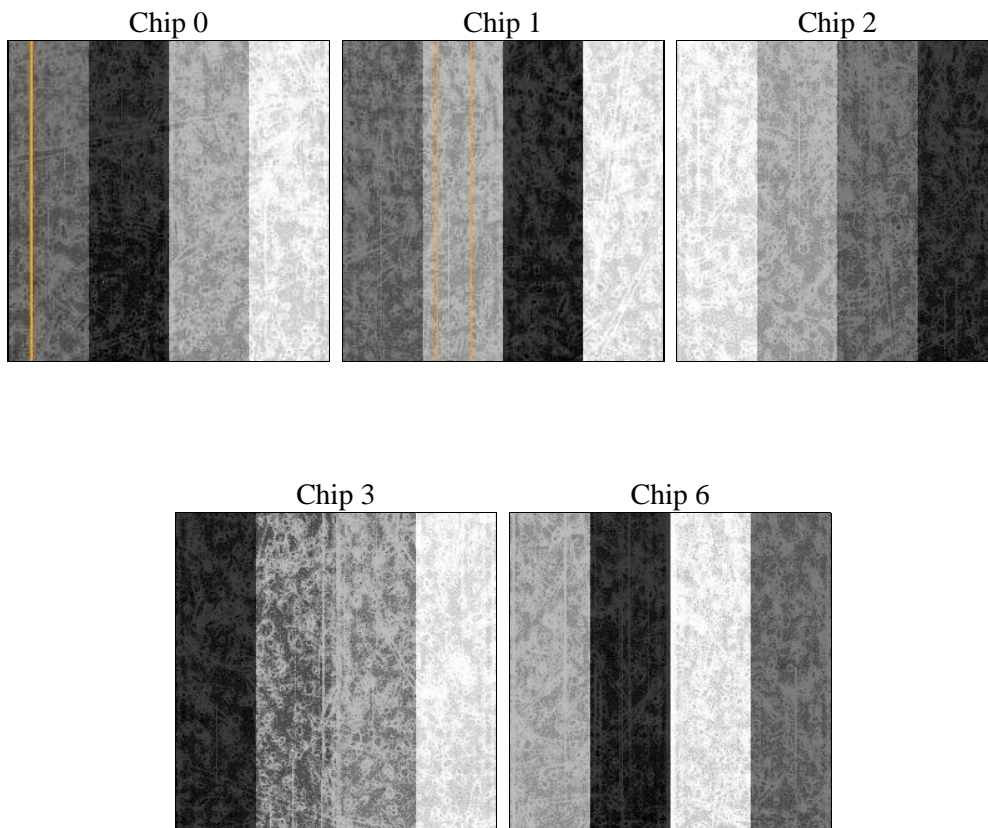
2 OBI

2.1 OBI

2.1.1 Images



2.1.2 Bias



2.1.3 Parameters

obi_num	0	Obi number	sched_exp_time	22030.000000	[s] Scheduled observation exposure time
ascdsver	8.4.5	Processing system revision	ontime	22140.200170279	Sum of GTIs [s]
caldbver	4.4.10	 	ontime0	22140.200170279	Sum of GTIs [s]
date	2012-06-21T01:11:24	Date and time of file creation	ontime1	22140.200170279	Sum of GTIs [s]
revision	2	Processing version of data	ontime2	22140.200170279	Sum of GTIs [s]
			ontime3	22130.777219355	Sum of GTIs [s]
			ontime6	22130.777219415	Sum of GTIs [s]
			l1events	961414	Number of level 1 events

2.1.4 Events

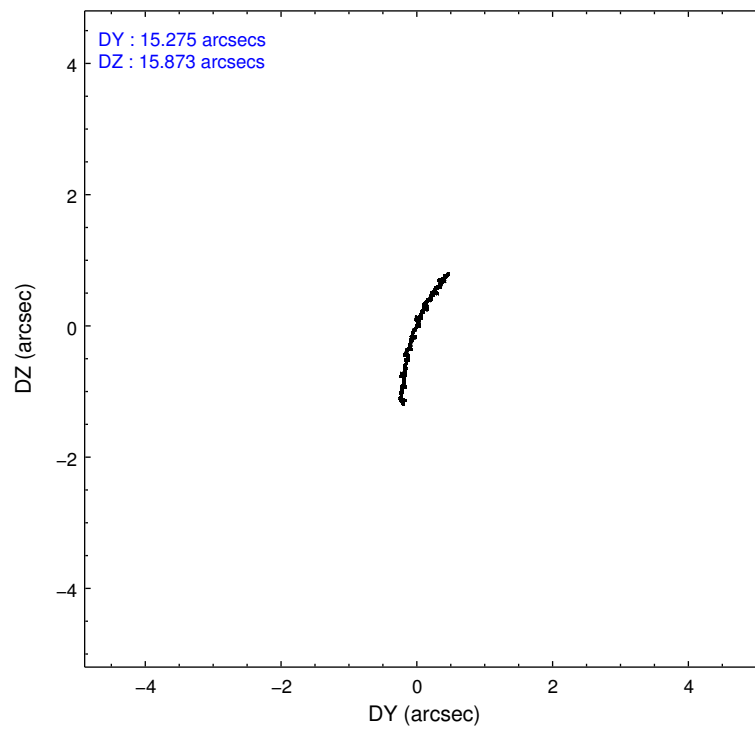
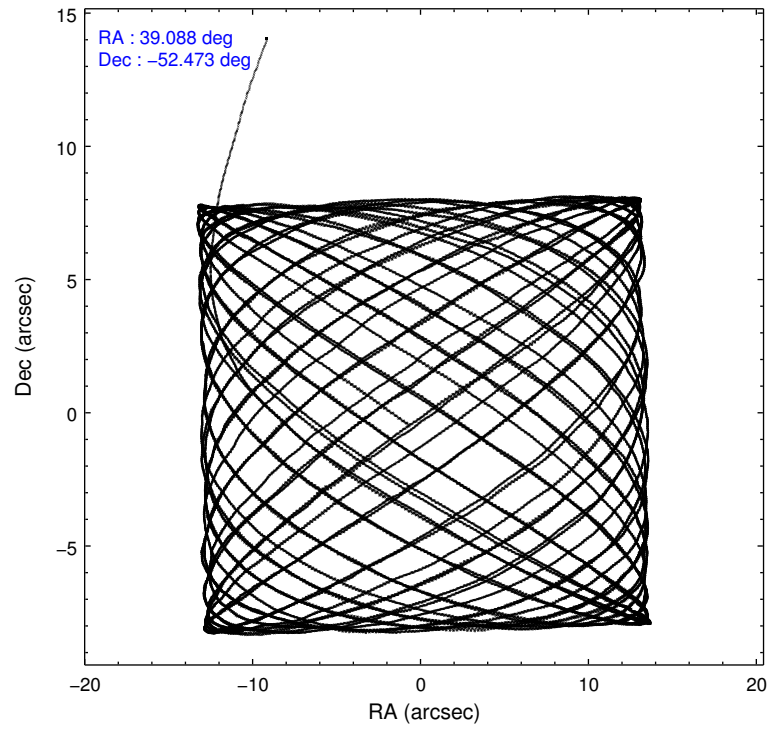
	ccd 0	ccd 1	ccd 2	ccd 3	ccd 6
level 1 events	182112	184668	200791	199107	194736
rejected events	162773	162570	181250	176373	174963
rejected %	89%	88%	90%	88%	89%

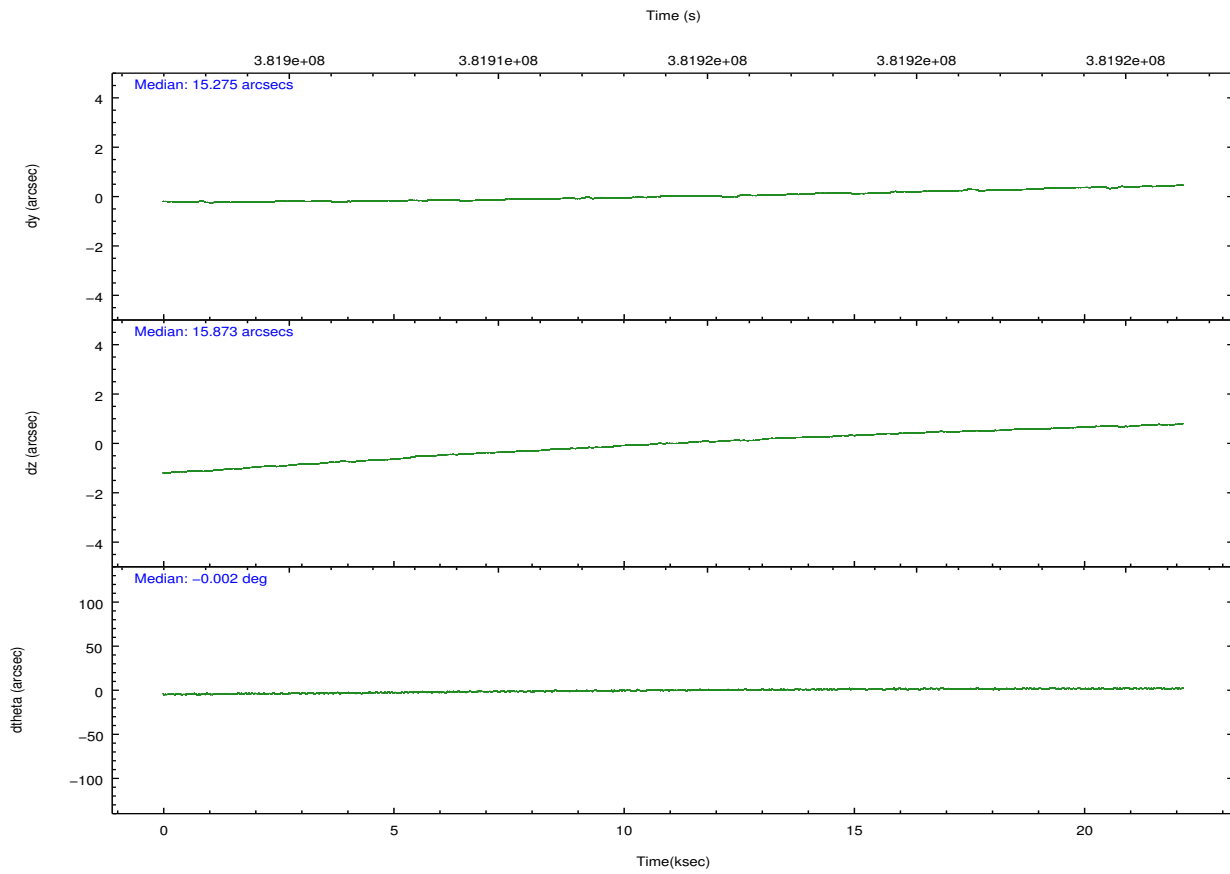
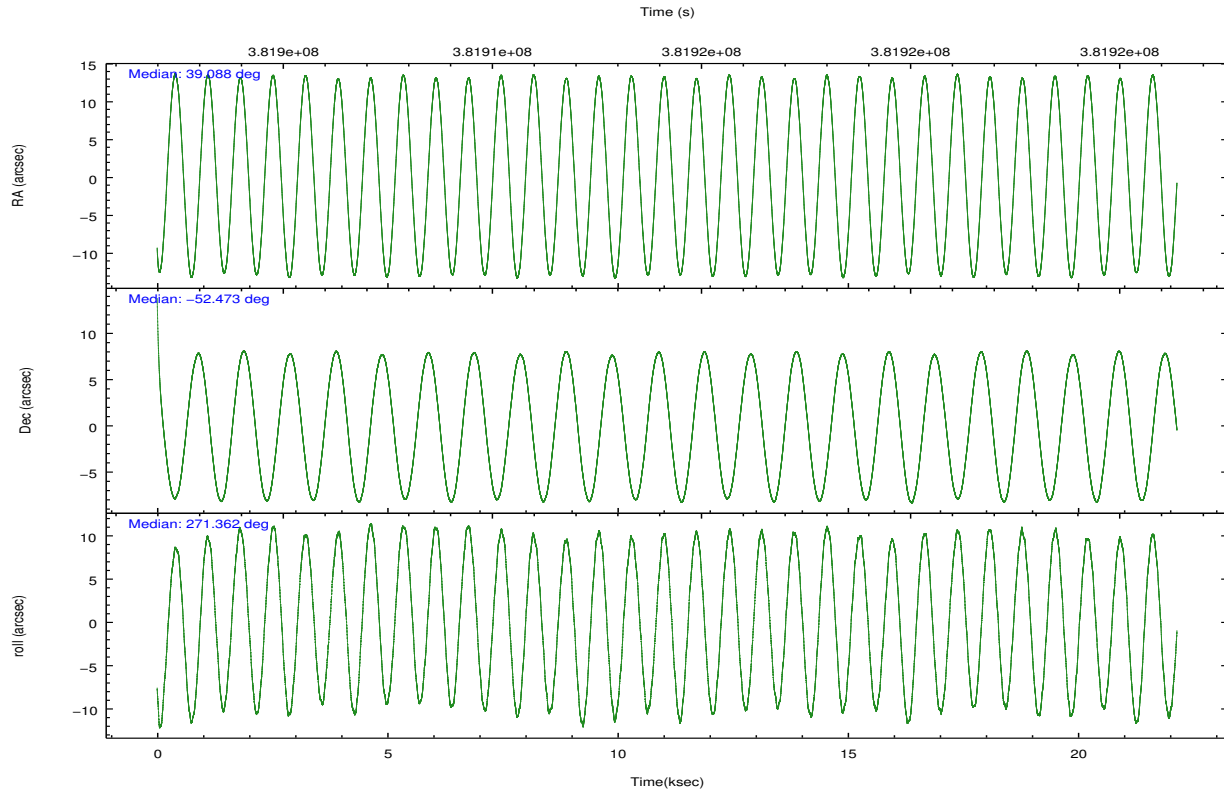
	ccd 0	ccd 1	ccd 2	ccd 3	ccd 6
grade 0 events	7179	8372	7590	10484	7334
	3%	4%	3%	5%	3%
grade 1 events	115	105	110	178	96
	0%	0%	0%	0%	0%
grade 2 events	5052	5470	5060	4888	4669
	2%	2%	2%	2%	2%
grade 3 events	2275	2536	2105	2312	2236
	1%	1%	1%	1%	1%
grade 4 events	2094	2396	2189	2226	2226
	1%	1%	1%	1%	1%
grade 5 events	7406	8234	7185	8503	8265
	4%	4%	3%	4%	4%
grade 6 events	3978	4643	3868	4039	4508
	2%	2%	1%	2%	2%
grade 7 events	154013	152912	172684	166477	165402
	84%	82%	86%	83%	84%

2.2 Compared Parameters

Parameter	Planned	Actual	Parameter	Planned	Actual
Instrument	ACIS	ACIS	Obspar format version number	7	7
Detector	ACIS-01236	ACIS-01236	Obspar file type	PREDICTED	ACTUAL
Grating	NONE	NONE	Obspar update status	NONE	UPDATED
Data mode	VFAINT	VFAINT	Number of optional ACIS chips dropped	0	0
Observation mode	POINTING	POINTING	On-chip summing requested	N	N
[deg] Pointing RA	39.064871	39.08847860988067	Subarray requested	NONE	NONE
[deg] Pointing Dec	-52.449609	-52.47301495466267	Alternating exposures requested	N	N
[deg] Pointing Roll	271.134557	271.361965572778	[s] Primary exposure time	0.000000	3.1
[mm] SIM focus pos	-0.782348	-0.7809083437167272			
[mm] SIM defocus	0	0.001439871863259334			
[mm] SIM translation stage pos	-233.592463	-233.5874344608287			
[mm] SIM translation stage offset	0	-0.005018542100998502			
[s] Observation start time (MET)	381903210.184000	381901570.08669			
Observation start date	2010-02-07T04:12:24	2010-02-07T03:46:10			
[s] Observation end time (MET)	381925240.184000	381926136.77543			
Observation end date	2010-02-07T10:19:34	2010-02-07T10:35:36			
Read mode	TIMED	TIMED			

2.3 Aspect



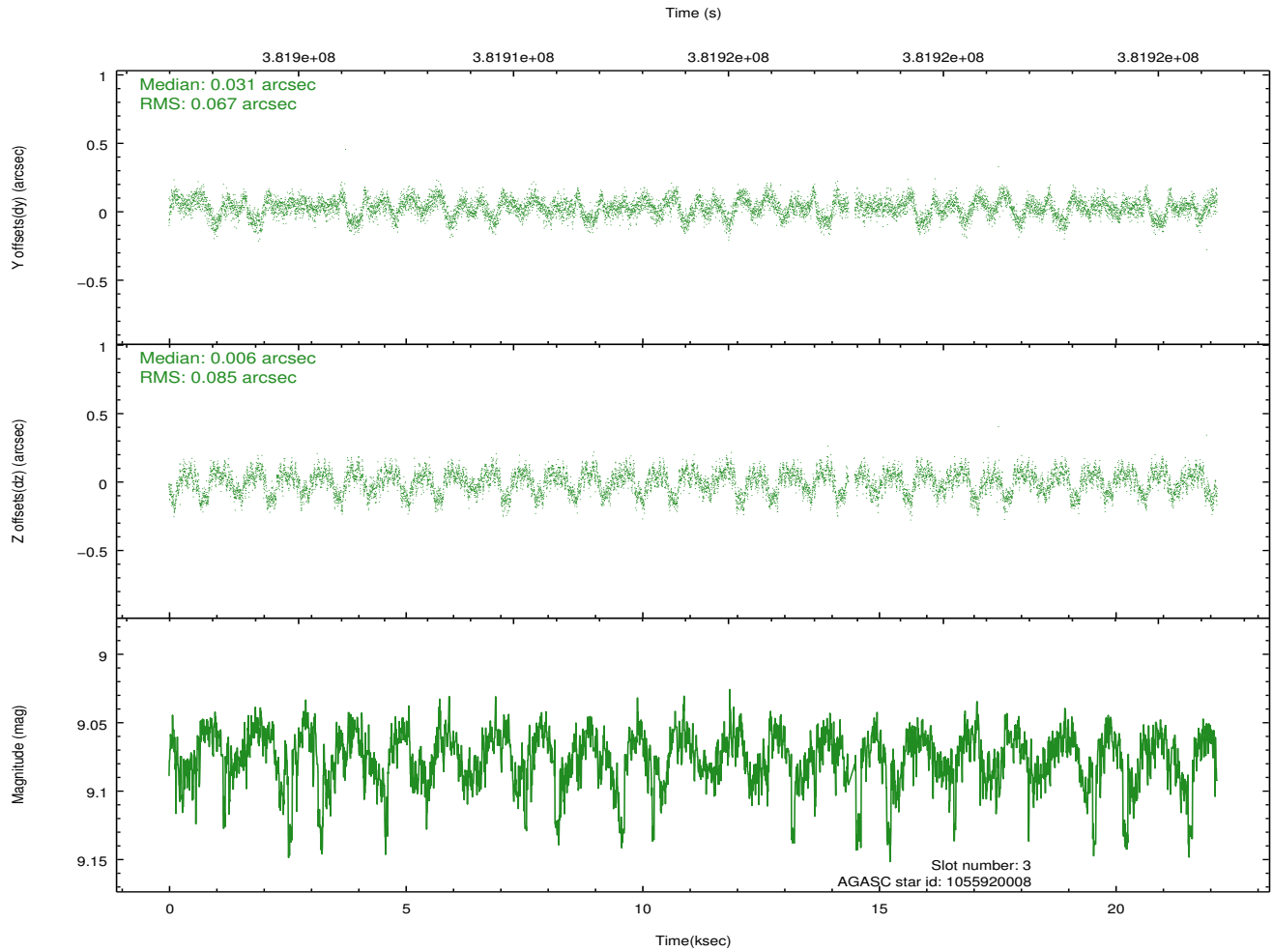
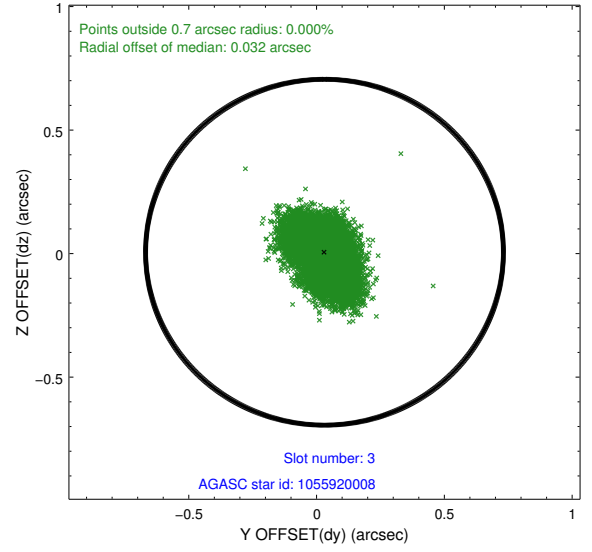
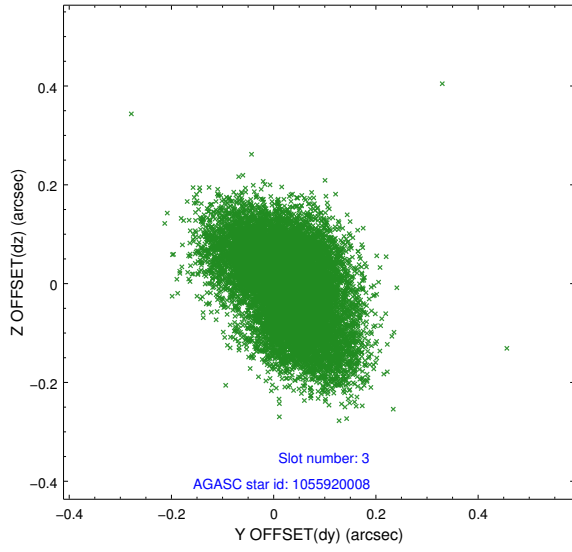


Slot Statistics

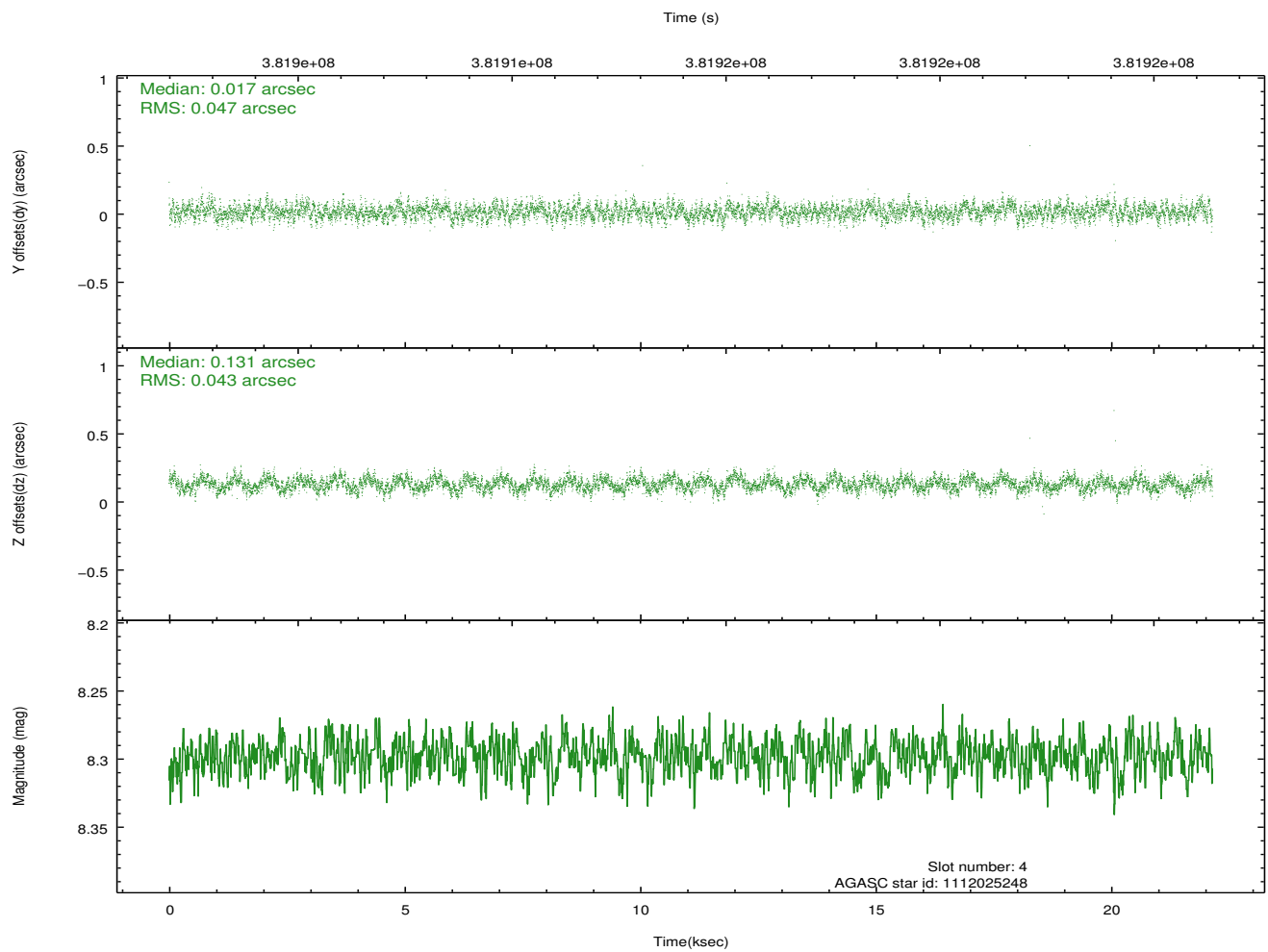
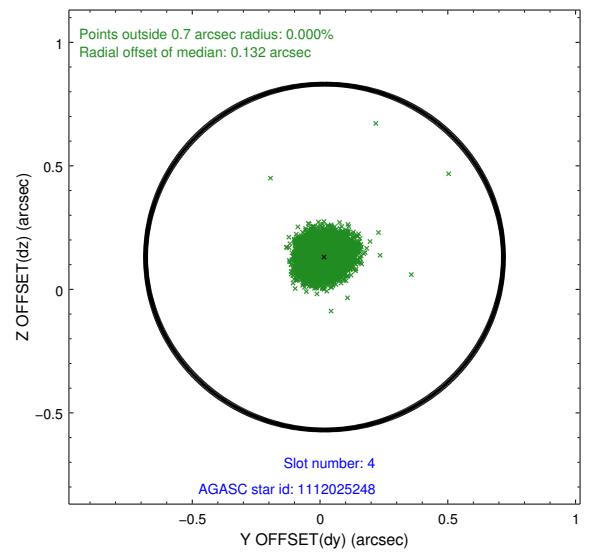
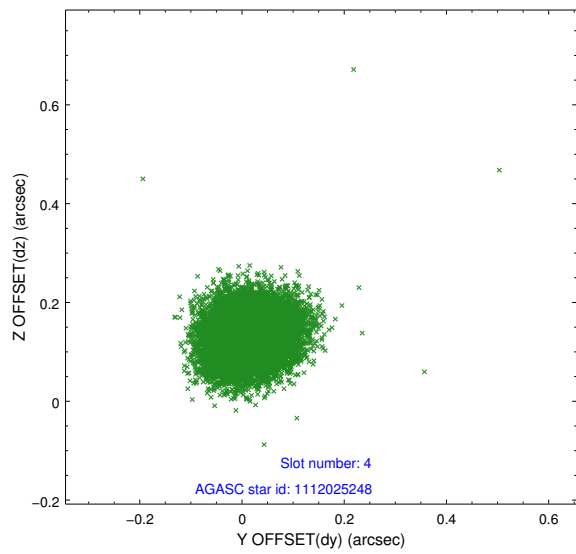
slot	status	id	mag	n_pts	med_dy	med_dz	dr1	dr2	ra	dec	mean_y	mean_z
0	FID	ACIS-I-1	7.05	5402	0.048	-0.030	0.020	0.055	0.000000	0.000000	924.18	-839.44
1	FID	ACIS-I-5	7.05	5402	-0.207	0.049	0.014	0.022	0.000000	0.000000	-1824.09	1058.05
2	FID	ACIS-I-6	7.06	5402	0.069	0.047	0.015	0.033	0.000000	0.000000	389.59	1702.71
3	GUIDE	1055920008	9.07	10727	0.031	0.006	0.115	0.186	39.596271	-52.346490	-343.36	1175.72
4	GUIDE	1112025248	8.30	10801	0.017	0.131	0.068	0.108	39.007472	-53.046025	2144.73	-165.88
5	GUIDE	1112026128	8.90	10793	0.032	0.032	0.076	0.126	38.912146	-52.876527	1531.14	-361.86
6	GUIDE	1112026392	7.03	10804	-0.099	-0.200	0.068	0.113	39.781517	-52.934809	1784.79	1520.54
7	GUIDE	1055917704	8.69	10795	0.018	0.048	0.072	0.115	38.591744	-51.795371	-2372.22	-1006.25

2.4 Star Slots

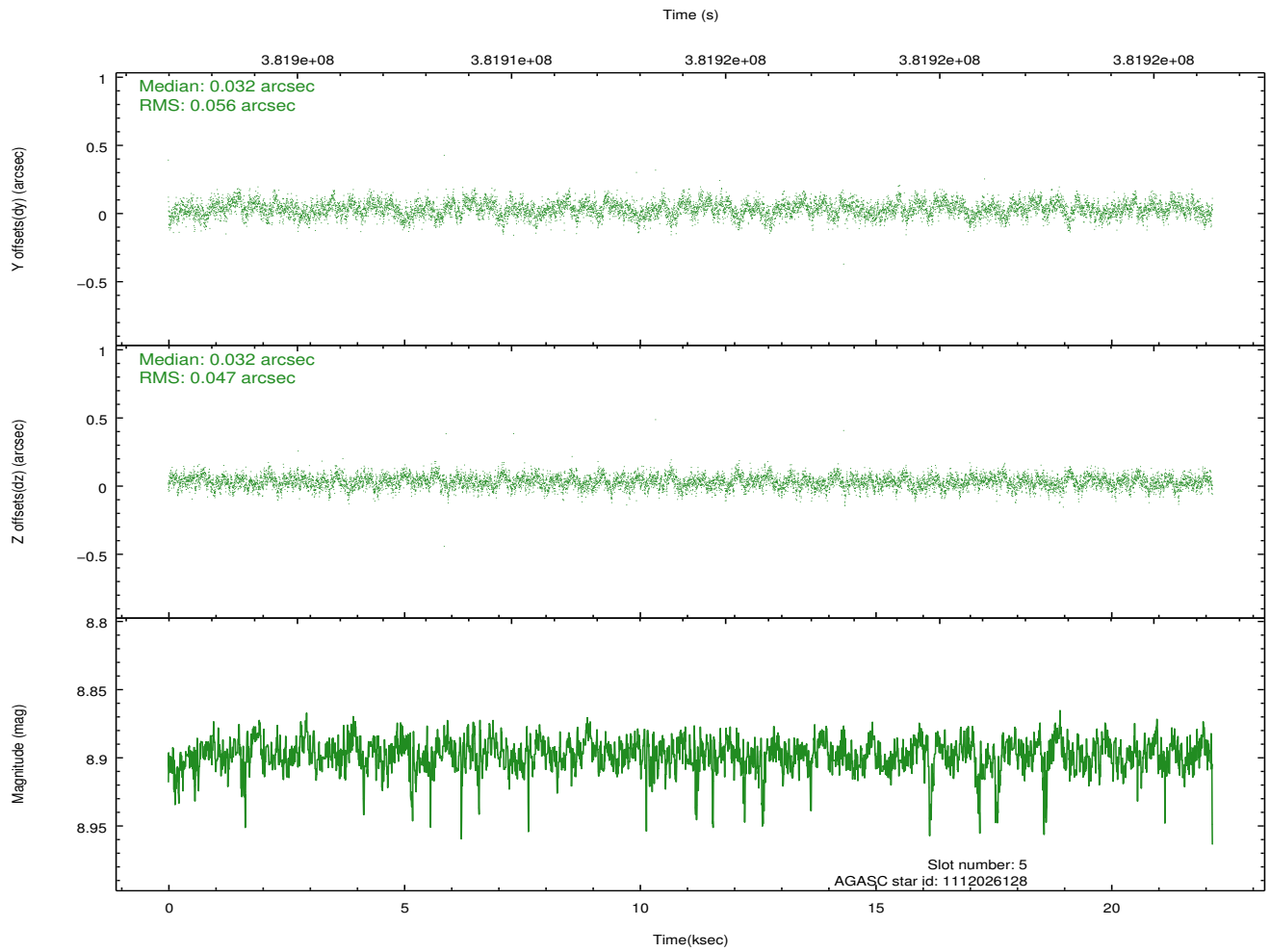
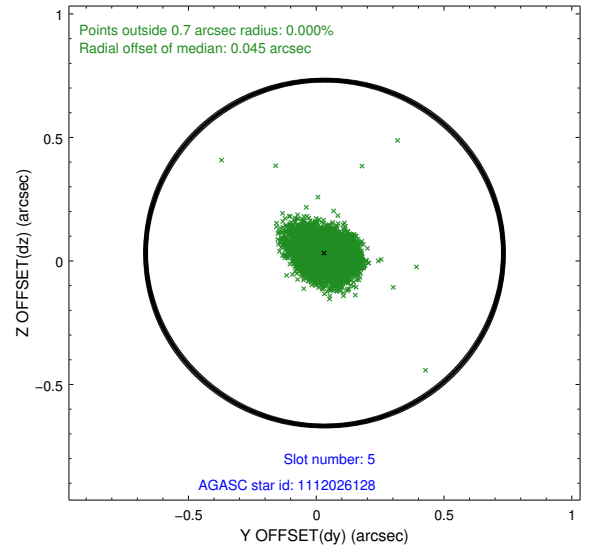
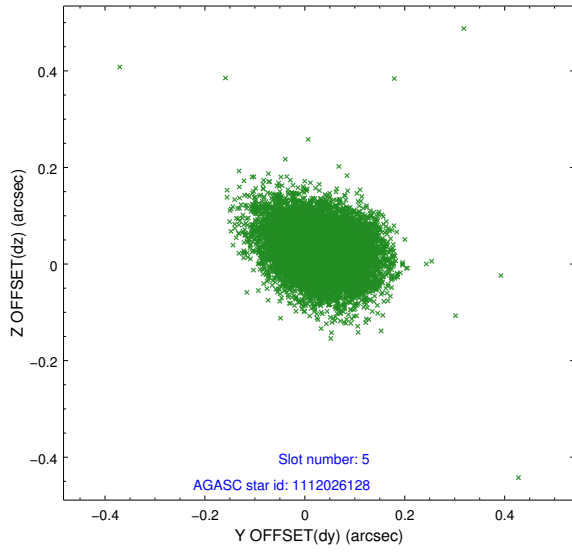
2.4.1 Slot 3



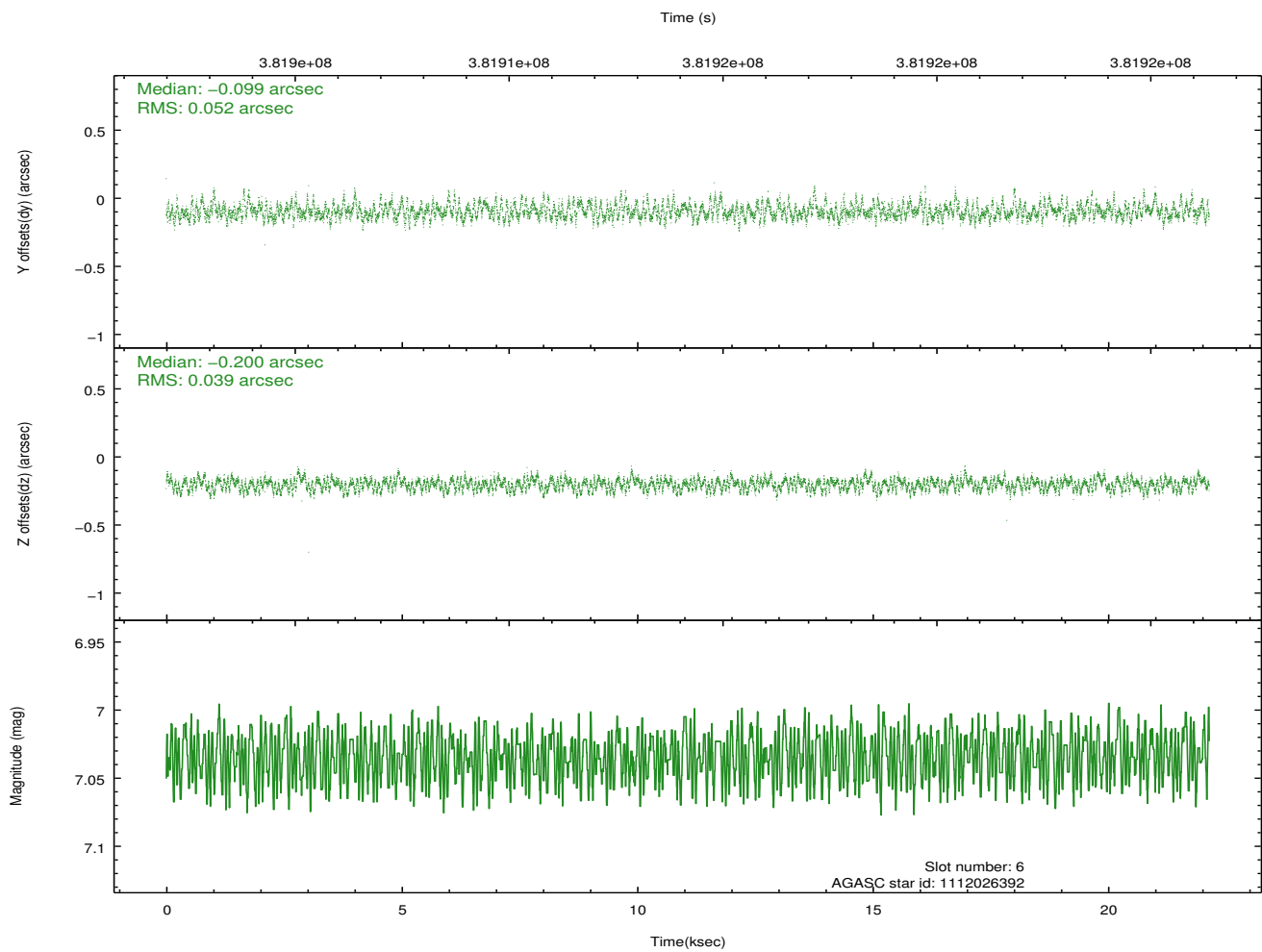
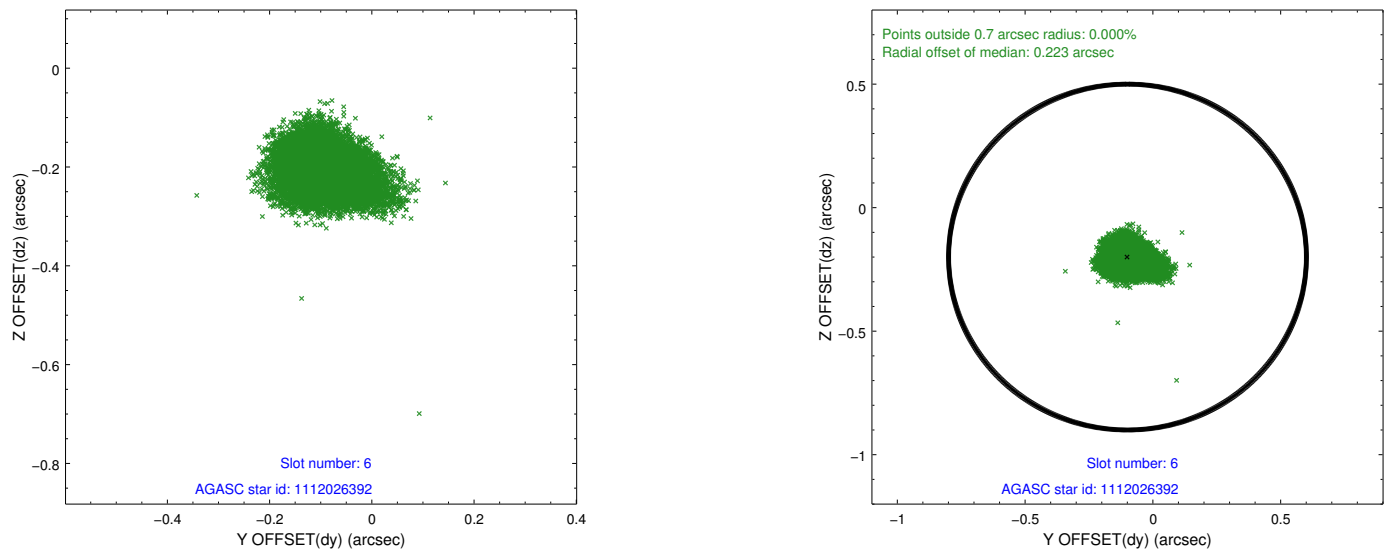
2.4.2 Slot 4



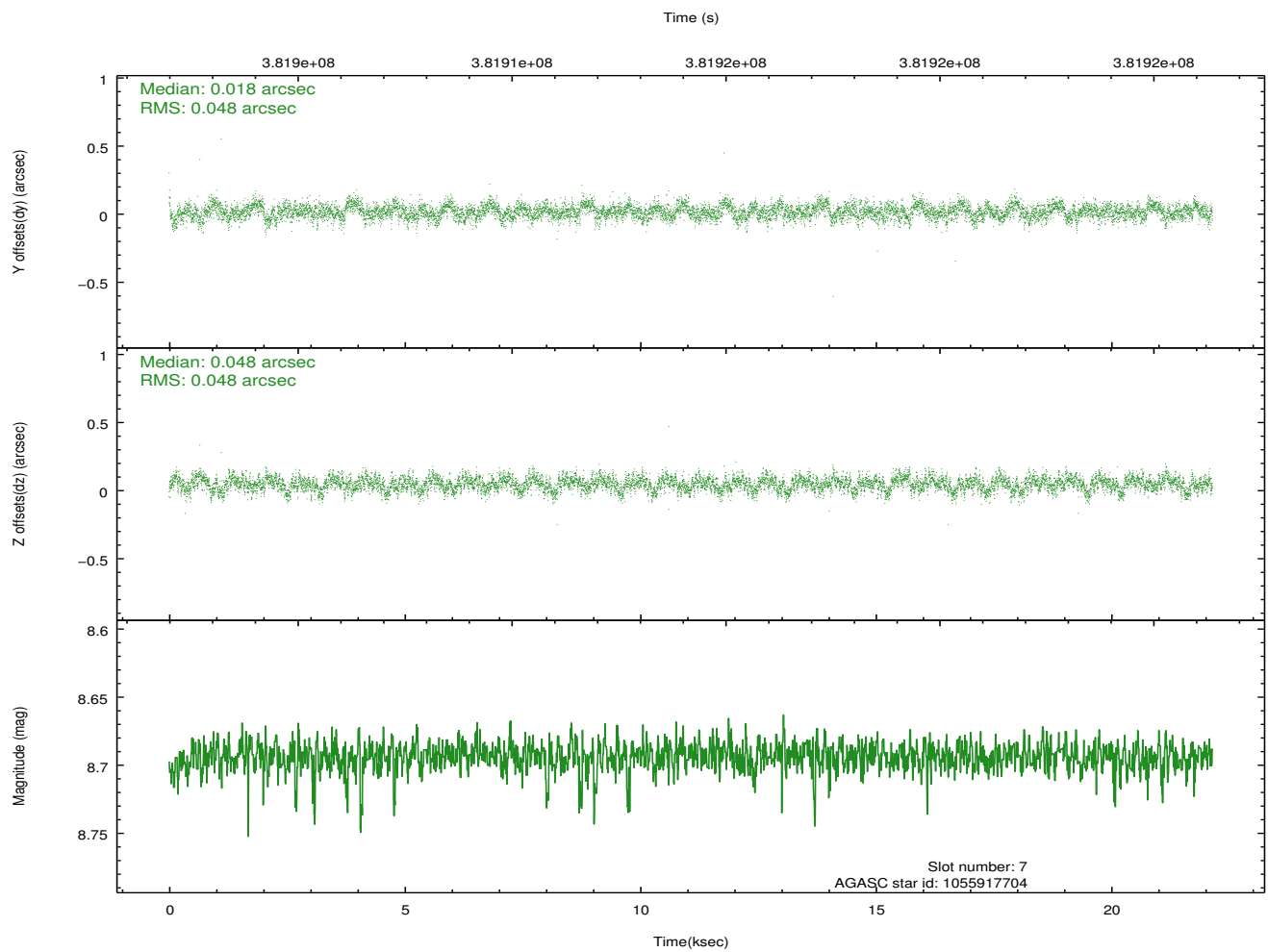
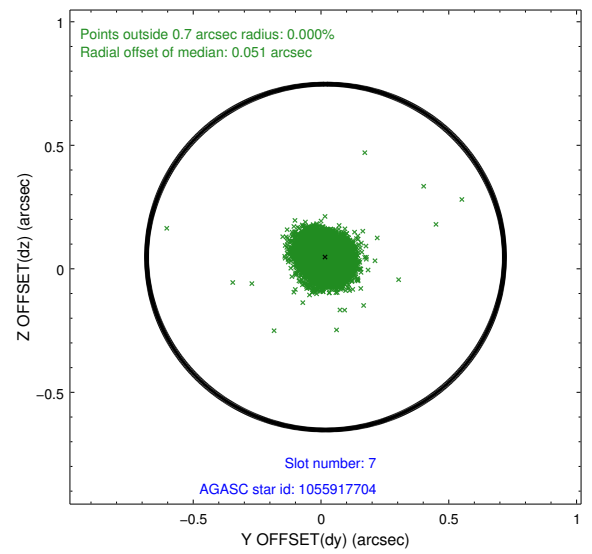
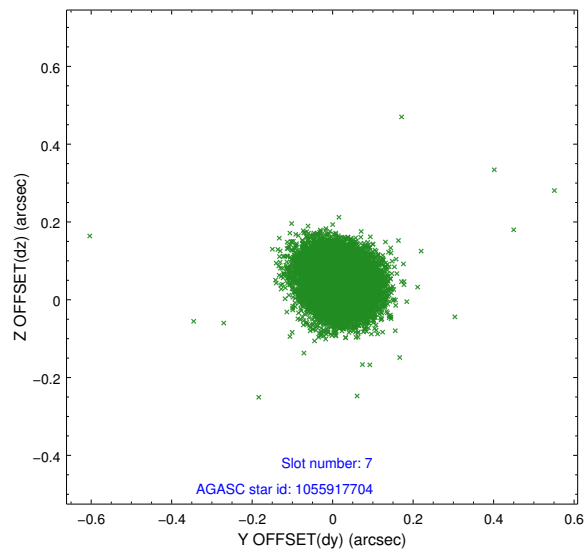
2.4.3 Slot 5



2.4.4 Slot 6

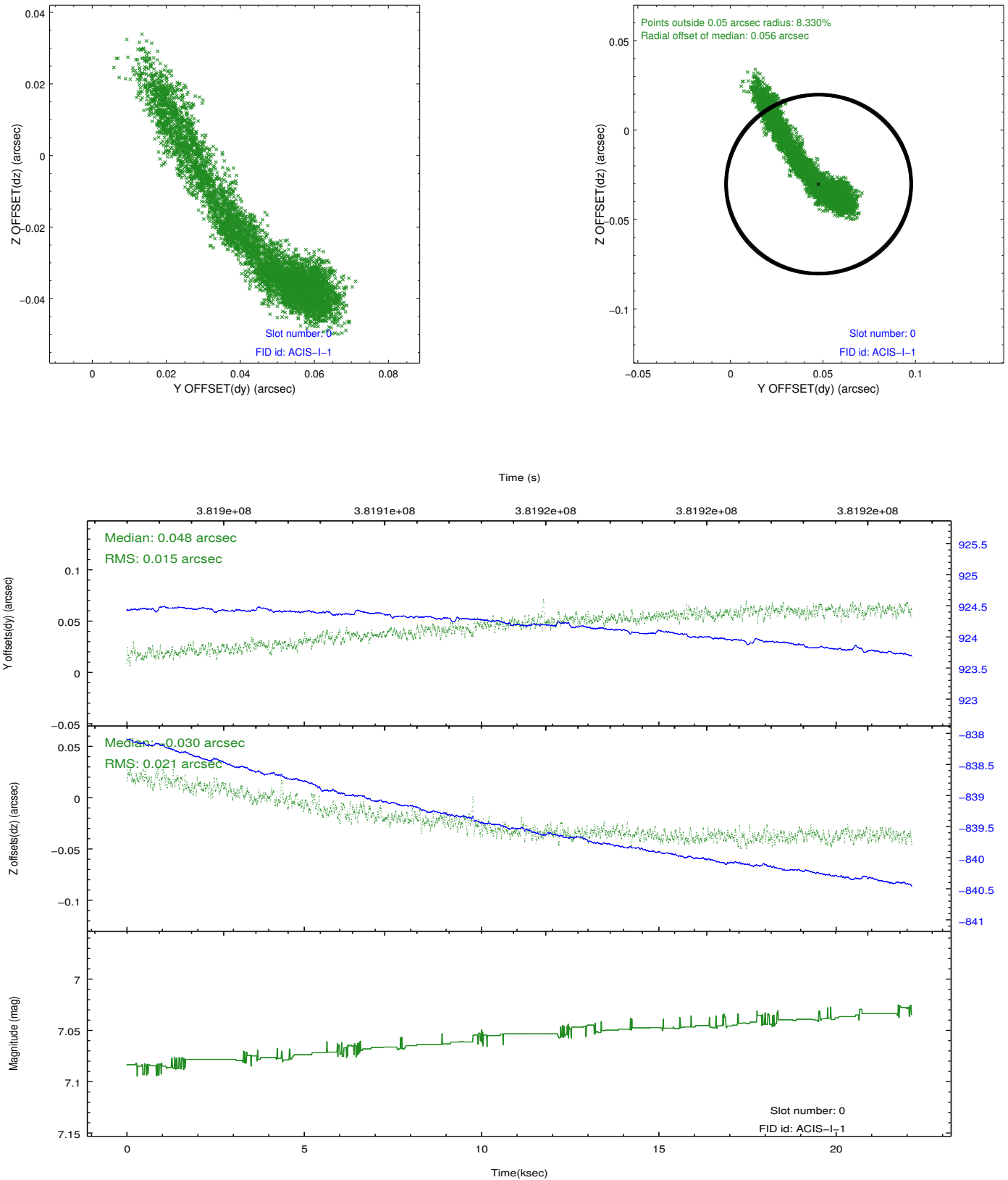


2.4.5 Slot 7

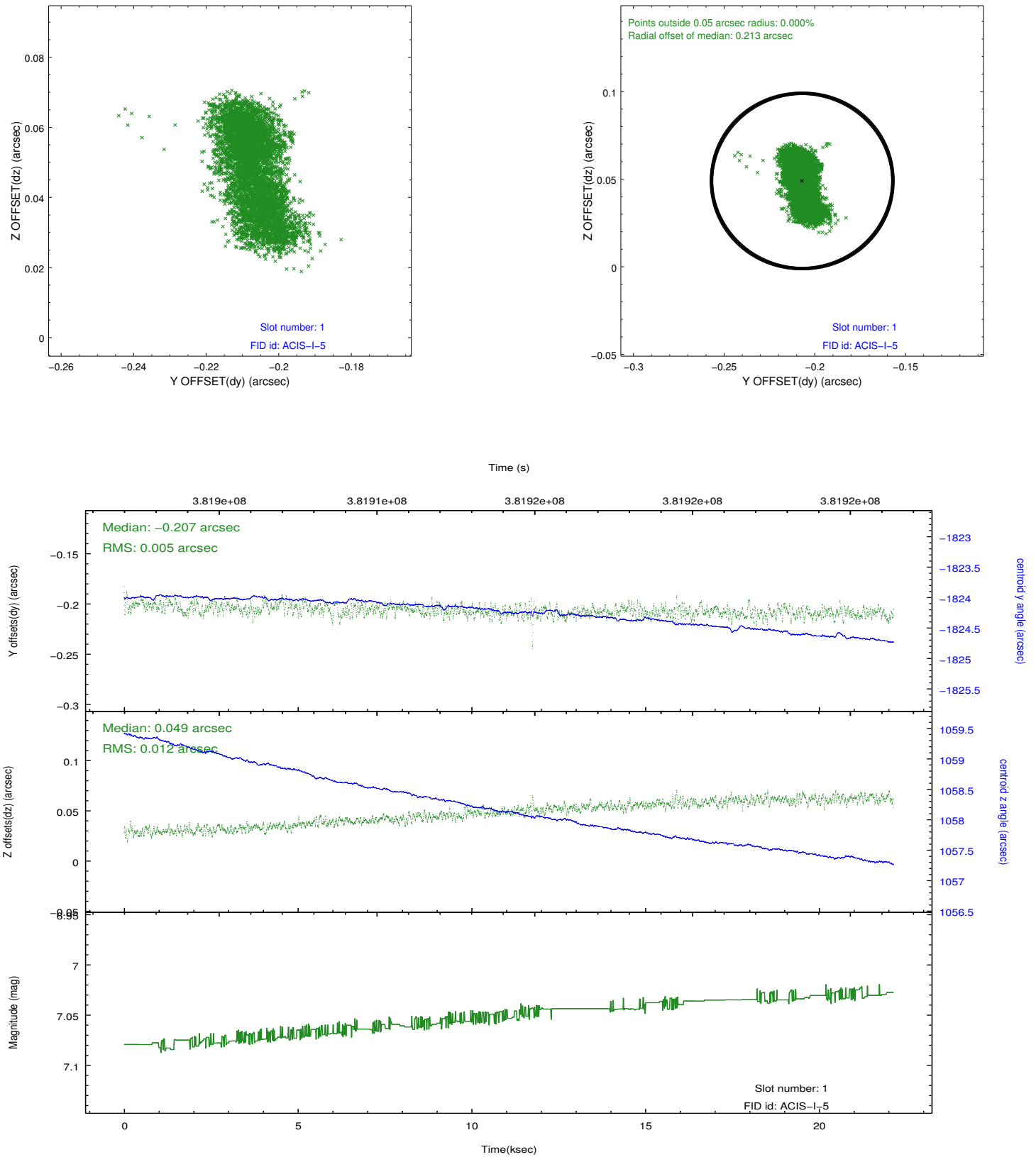


2.5 FID Slots

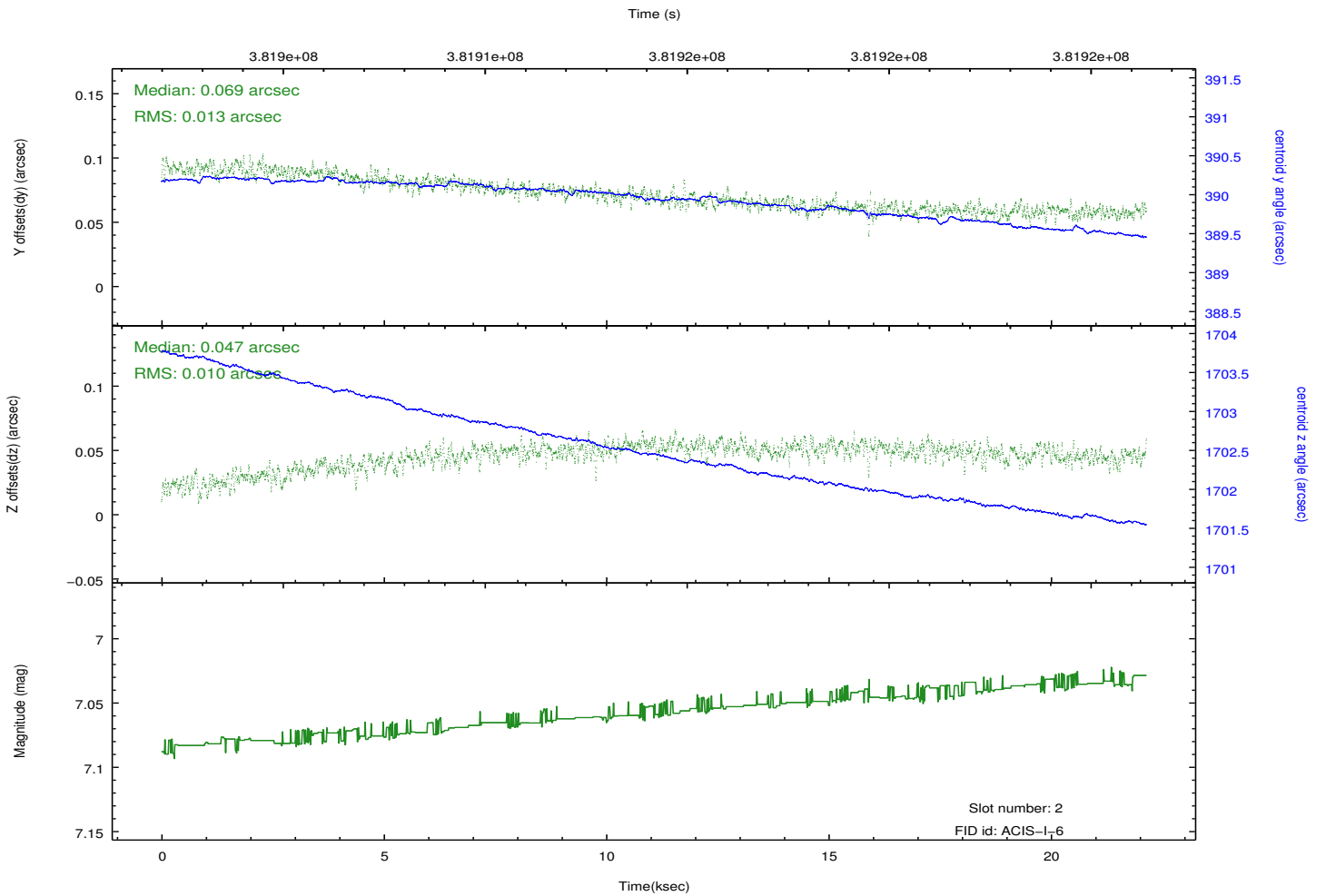
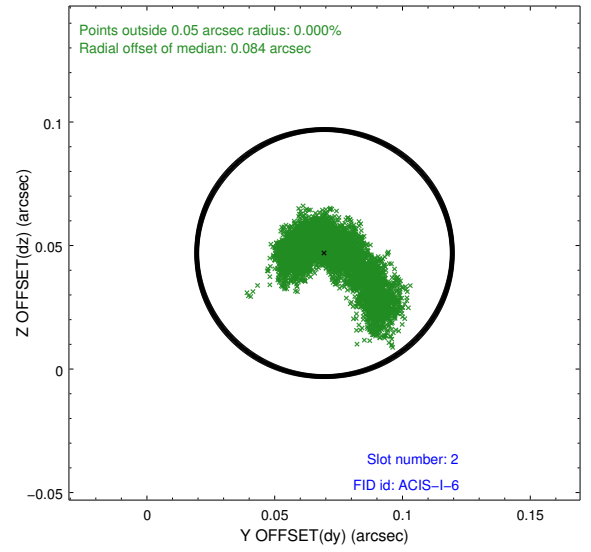
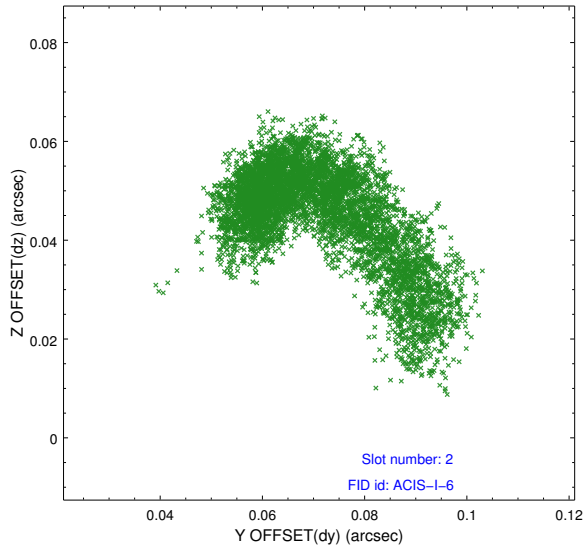
2.5.1 Slot 0



2.5.2 Slot 1



2.5.3 Slot 2



A Summary

A.1 Status

V&V Scientist	Jen Lauer
V&V Date (YYYY-MM-DD)	2012.06.27
V&V Edition	1
V&V Disposition and Status	OK
V&V Charge Time	22.140200170279

A.2 Comments