

V&V Reference Report

L2 ASCDS Version : 8.4.5

Observation 12306 - L2 Version 2
Chandra X-Ray Center

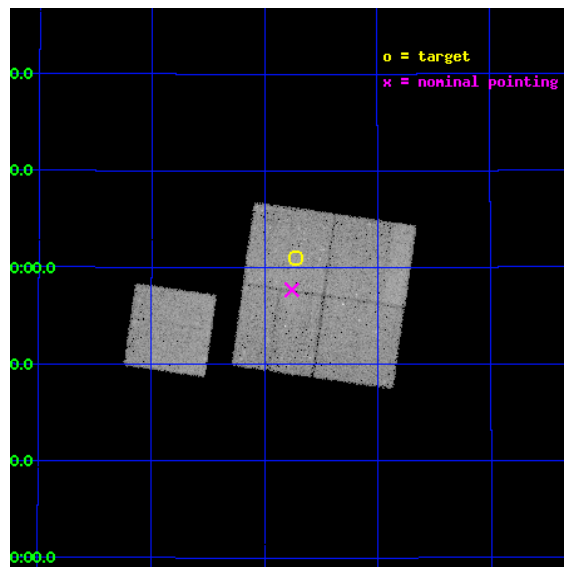
L2 Processing Date : Jul 1 2012

Contents

1	Front	2
2	OBI	3
2.1	OBI	3
2.1.1	Images	3
2.1.2	Bias	3
2.1.3	Parameters	4
2.1.4	Events	4
2.2	Compared Parameters	5
2.3	Aspect	6
2.4	Star Slots	9
2.4.1	Slot 3	9
2.4.2	Slot 4	10
2.4.3	Slot 5	11
2.4.4	Slot 6	12
2.4.5	Slot 7	13
2.5	FID Slots	14
2.5.1	Slot 0	14
2.5.2	Slot 1	15
2.5.3	Slot 2	16
A	Summary	17
A.1	Status	17
A.2	Comments	17

1 Front

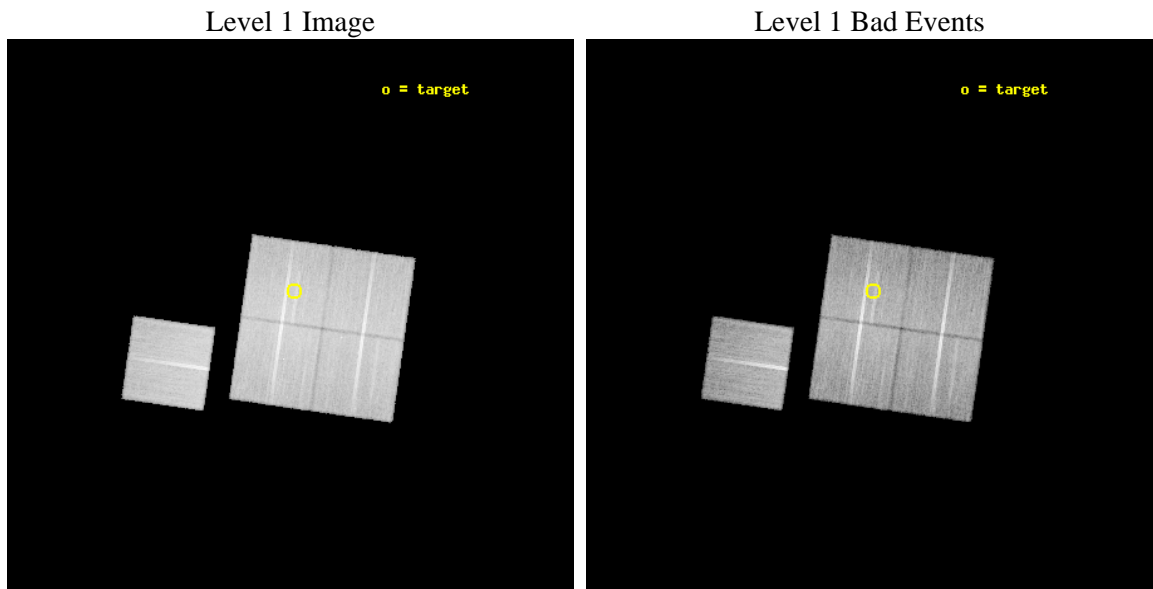
seq_num	801011	Sequence number
obs_id	12306	Observation id
title	The X-ray Properties of Weak-Lensing Selected Galaxy Clusters	Prop
observer	MR Paul Giles	Principal investigator
object	SLJ1337.7+3800	Source name
dtcycle	0	
cycle	P	events from which exps? Prim/Second/Both
ra_targ	204.432083	Observer's specified target RA [deg]
dec_targ	38.015833	Observer's specified target Dec [deg]
ra_nom	204.43944730412	Nominal RA [deg]
dec_nom	37.961729244521	Nominal Dec [deg]
roll_nom	278.16333646007	Nominal Roll [deg]
revision	2	Processing version of data
ontime	34037.775364399	Sum of GTIs [s]
livetime	33593.046771017	Livetime [s]
ontime0	34050.216155469	Sum of GTIs [s]
ontime1	34047.116225183	Sum of GTIs [s]
ontime2	34047.157245219	Sum of GTIs [s]
ontime3	34037.775364399	Sum of GTIs [s]
ontime6	34034.470273614	Sum of GTIs [s]
l2events	116913	Number of level 2 events



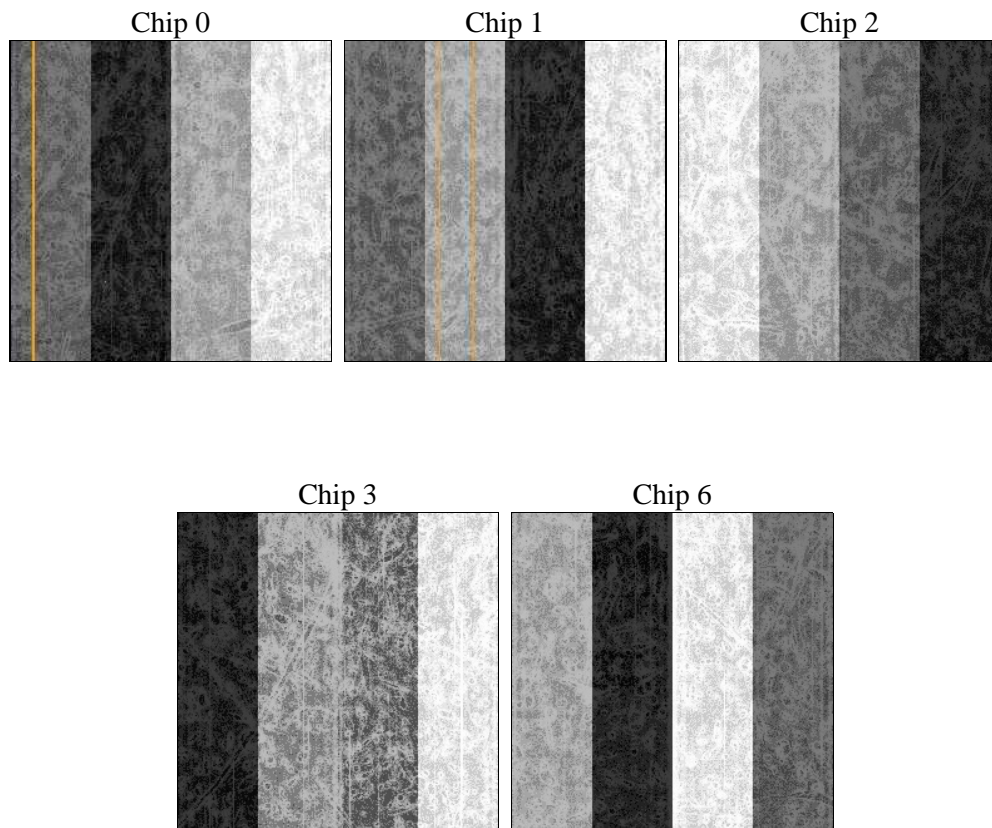
2 OBI

2.1 OBI

2.1.1 Images



2.1.2 Bias



2.1.3 Parameters

obi_num	0	Obi number	sched_exp_time	34000.000000	[s] Scheduled observation exposure time
ascdsver	8.4.5	Processing system revision	ontime	34037.775364399	Sum of GTIs [s]
caldbver	4.5.0	 	ontime0	34050.216155469	Sum of GTIs [s]
date	2012-07-01T17:20:01	Date and time of file creation	ontime1	34047.116225183	Sum of GTIs [s]
revision	2	Processing version of data	ontime2	34047.157245219	Sum of GTIs [s]
			ontime3	34037.775364399	Sum of GTIs [s]
			ontime6	34034.470273614	Sum of GTIs [s]
			l1events	1234048	Number of level 1 events

2.1.4 Events

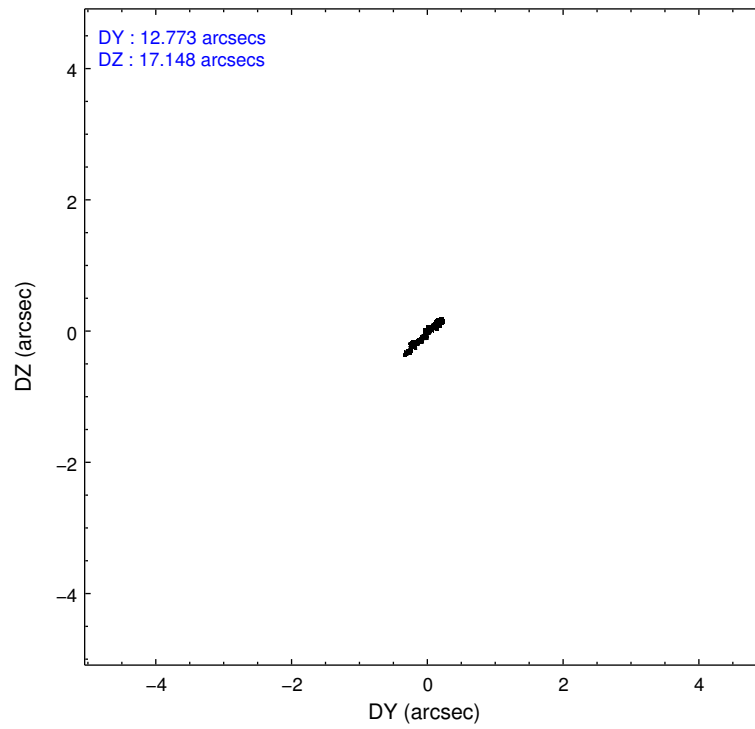
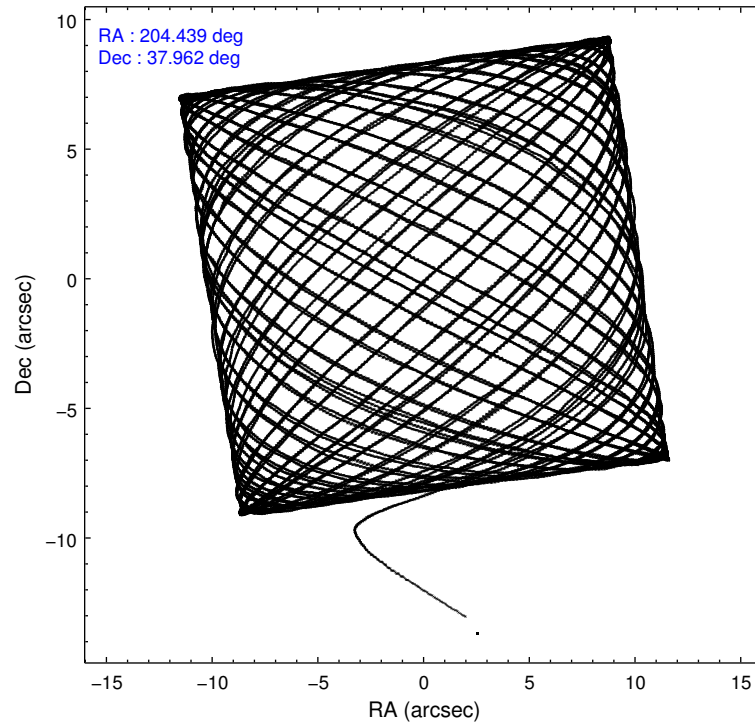
	ccd 0	ccd 1	ccd 2	ccd 3	ccd 6
level 1 events	231505	236946	256975	254118	254504
rejected events	203923	206375	229393	227464	226437
rejected %	88%	87%	89%	89%	88%

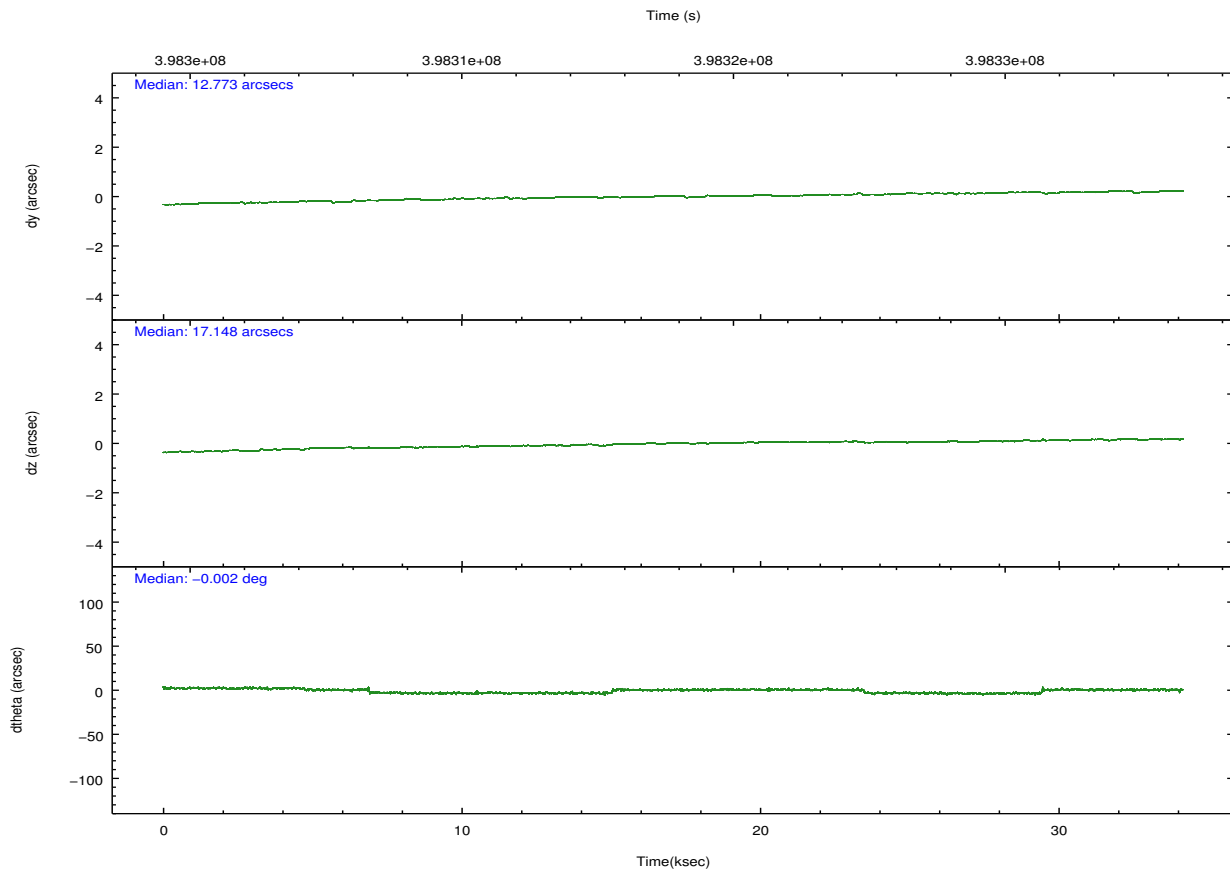
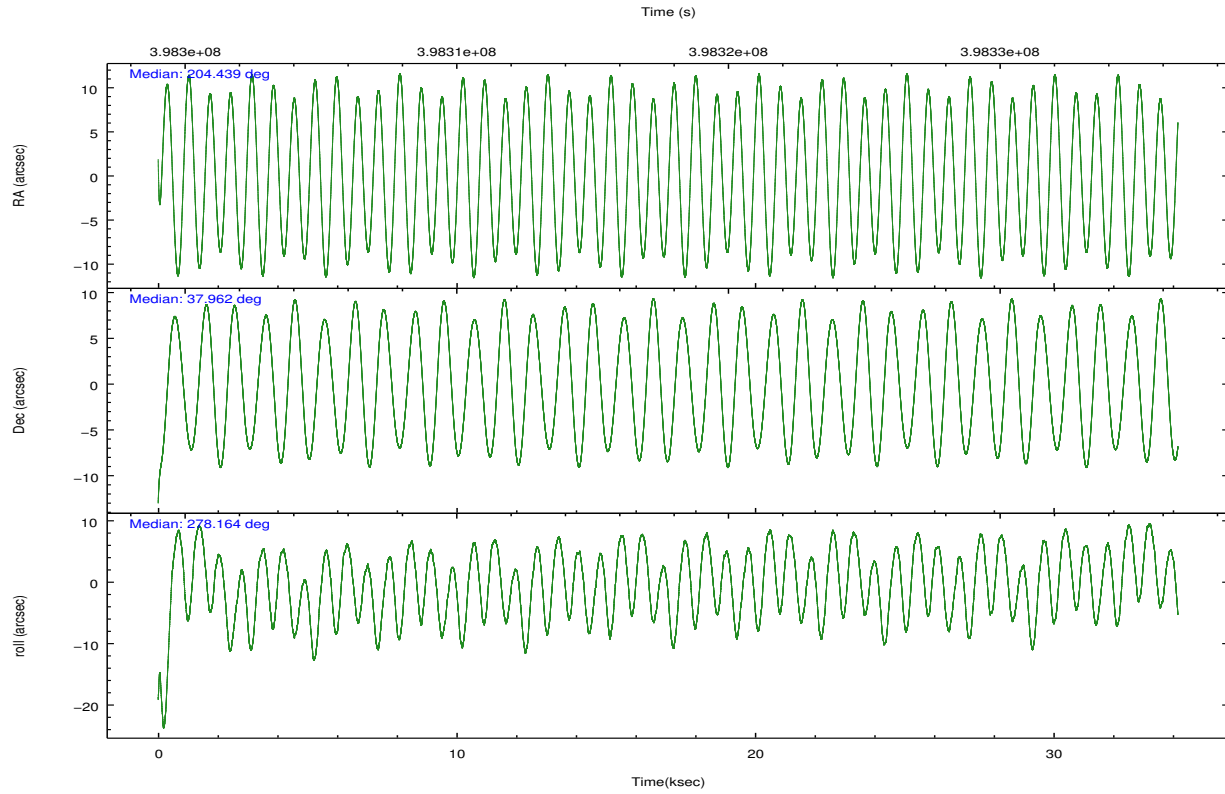
	ccd 0	ccd 1	ccd 2	ccd 3	ccd 6
grade 0 events	9496	10526	10097	9480	9540
	4%	4%	3%	3%	3%
grade 1 events	161	115	161	146	124
	0%	0%	0%	0%	0%
grade 2 events	6822	7207	6669	6049	6469
	2%	3%	2%	2%	2%
grade 3 events	2962	3255	2881	2856	2928
	1%	1%	1%	1%	1%
grade 4 events	2762	3179	2851	2783	3034
	1%	1%	1%	1%	1%
grade 5 events	9905	10863	9723	11582	11246
	4%	4%	3%	4%	4%
grade 6 events	5541	6407	5085	5487	6099
	2%	2%	1%	2%	2%
grade 7 events	193856	195394	219508	215735	215064
	83%	82%	85%	84%	84%

2.2 Compared Parameters

Parameter	Planned	Actual	Parameter	Planned	Actual
Instrument	ACIS	ACIS	Obspar format version number	7	7
Detector	ACIS-01236	ACIS-01236	Obspar file type	PREDICTED	ACTUAL
Grating	NONE	NONE	Obspar update status	NONE	UPDATED
Data mode	VFAINT	VFAINT	Number of optional ACIS chips dropped	0	0
Observation mode	POINTING	POINTING	On-chip summing requested	N	N
[deg] Pointing RA	204.417781	204.4394473041219	Subarray requested	NONE	NONE
[deg] Pointing Dec	37.983294	37.96172924452109	Alternating exposures requested	N	N
[deg] Pointing Roll	277.967984	278.1633364600657	[s] Primary exposure time	0.000000	3.1
[mm] SIM focus pos	-0.782348	-0.7809083437167272			
[mm] SIM defocus	0	0.001439871863259334			
[mm] SIM translation stage pos	-225.792463	-225.7829997647864			
[mm] SIM translation stage offset	-7.8	-7.809453238143249			
[s] Observation start time (MET)	398300853.184000	398299337.44653			
Observation start date	2010-08-15T23:06:27	2010-08-15T22:42:17			
[s] Observation end time (MET)	398334853.184000	398335483.04838			
Observation end date	2010-08-16T08:33:07	2010-08-16T08:44:43			
Read mode	TIMED	TIMED			

2.3 Aspect



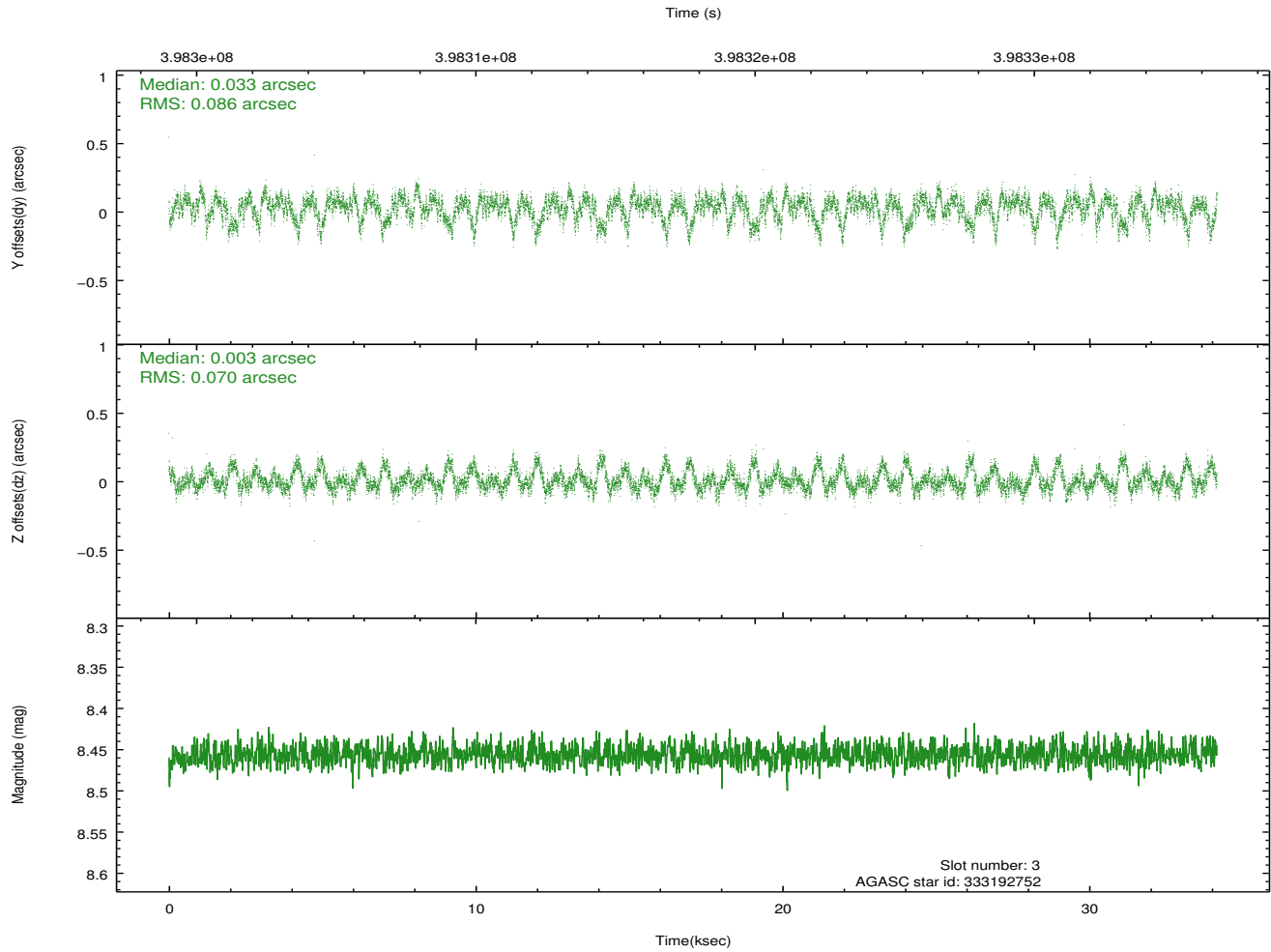
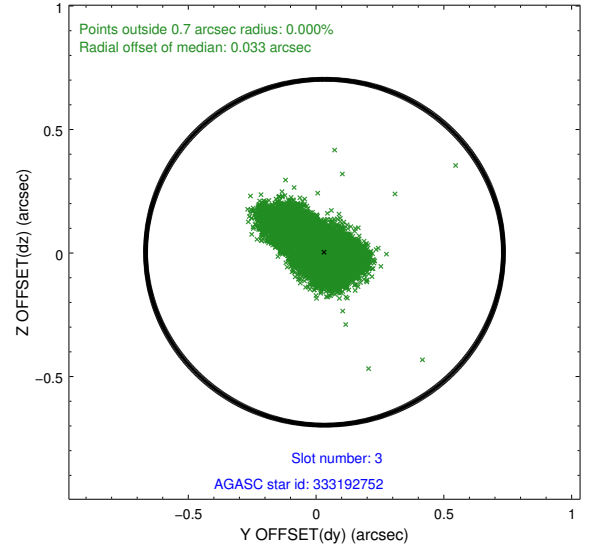
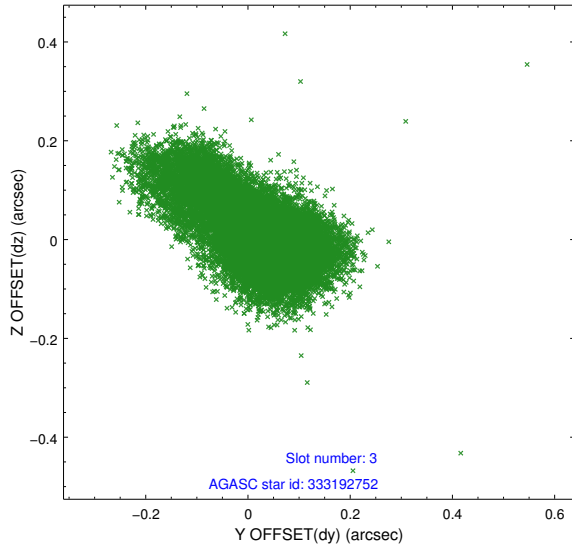


Slot Statistics

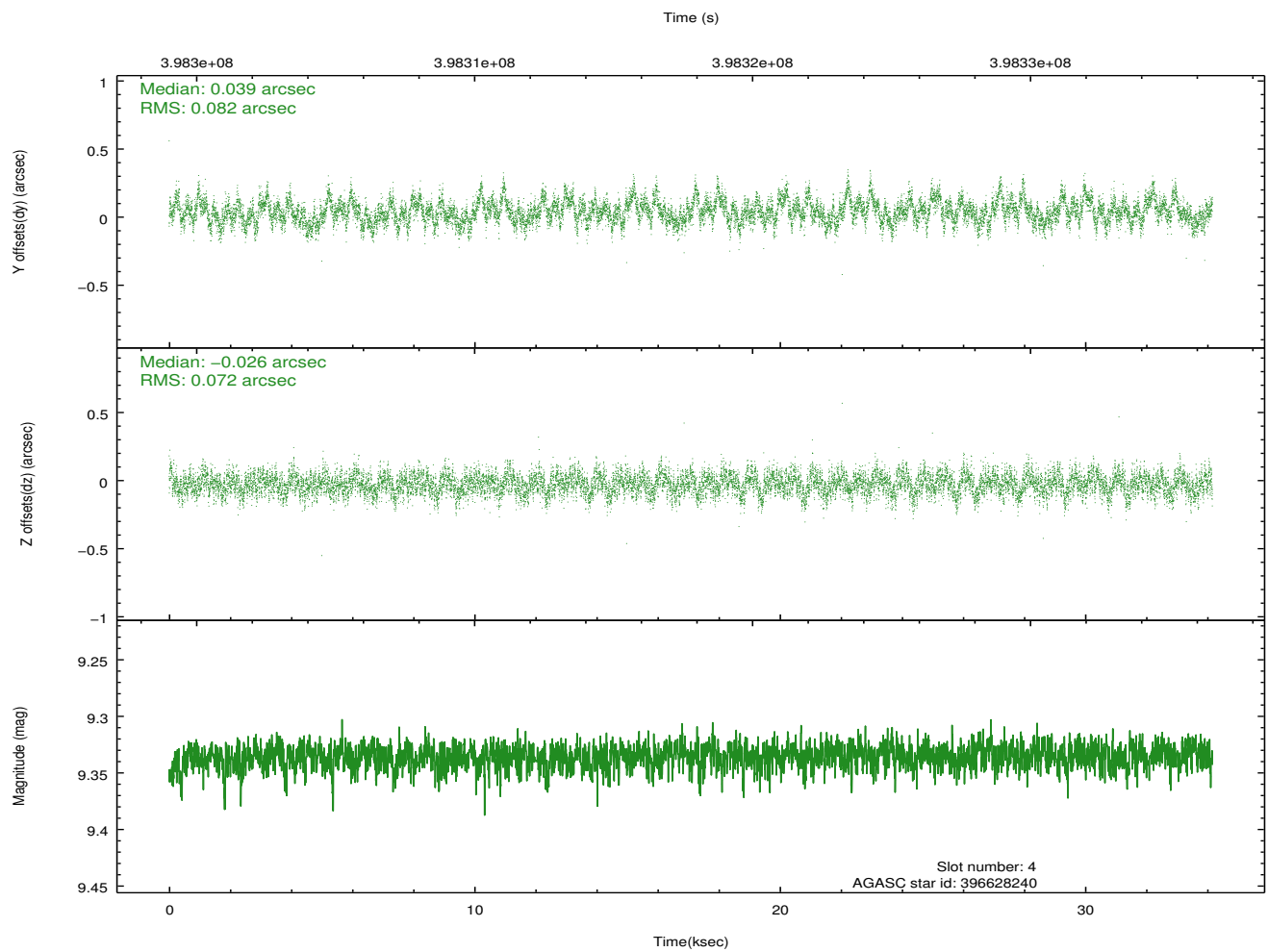
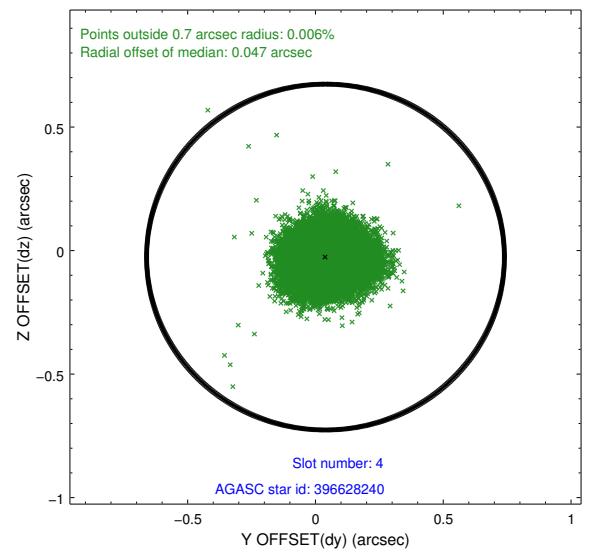
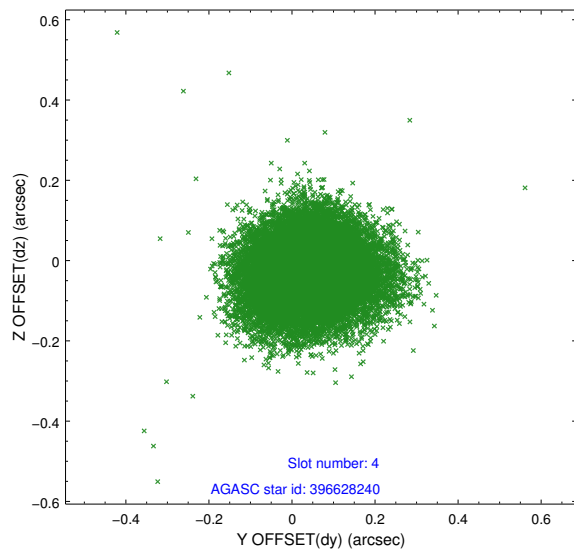
slot	status	id	mag	n_pts	med_dy	med_dz	dr1	dr2	ra	dec	mean_y	mean_z
0	FID	ACIS-I-2	6.96	8332	-0.123	-0.047	0.019	0.037	0.000000	0.000000	-768.09	-1006.45
1	FID	ACIS-I-4	6.91	8333	0.140	0.081	0.014	0.022	0.000000	0.000000	2146.18	899.75
2	FID	ACIS-I-5	6.98	8333	-0.123	0.035	0.021	0.033	0.000000	0.000000	-1821.45	896.62
3	GUIDE	333192752	8.46	16661	0.033	0.003	0.107	0.216	203.839277	37.405848	1825.13	-1925.58
4	GUIDE	396628240	9.34	16646	0.039	-0.026	0.117	0.188	203.780849	38.306087	-1405.52	-1619.87
5	GUIDE	396631480	8.02	16661	-0.182	0.077	0.079	0.142	203.891262	37.702710	788.74	-1624.37
6	GUIDE	396632440	9.95	16635	-0.069	0.076	0.214	0.341	204.051808	37.688452	905.96	-1178.62
7	GUIDE	333189448	9.77	16634	0.188	-0.137	0.144	0.243	203.800371	37.269844	2294.22	-2106.76

2.4 Star Slots

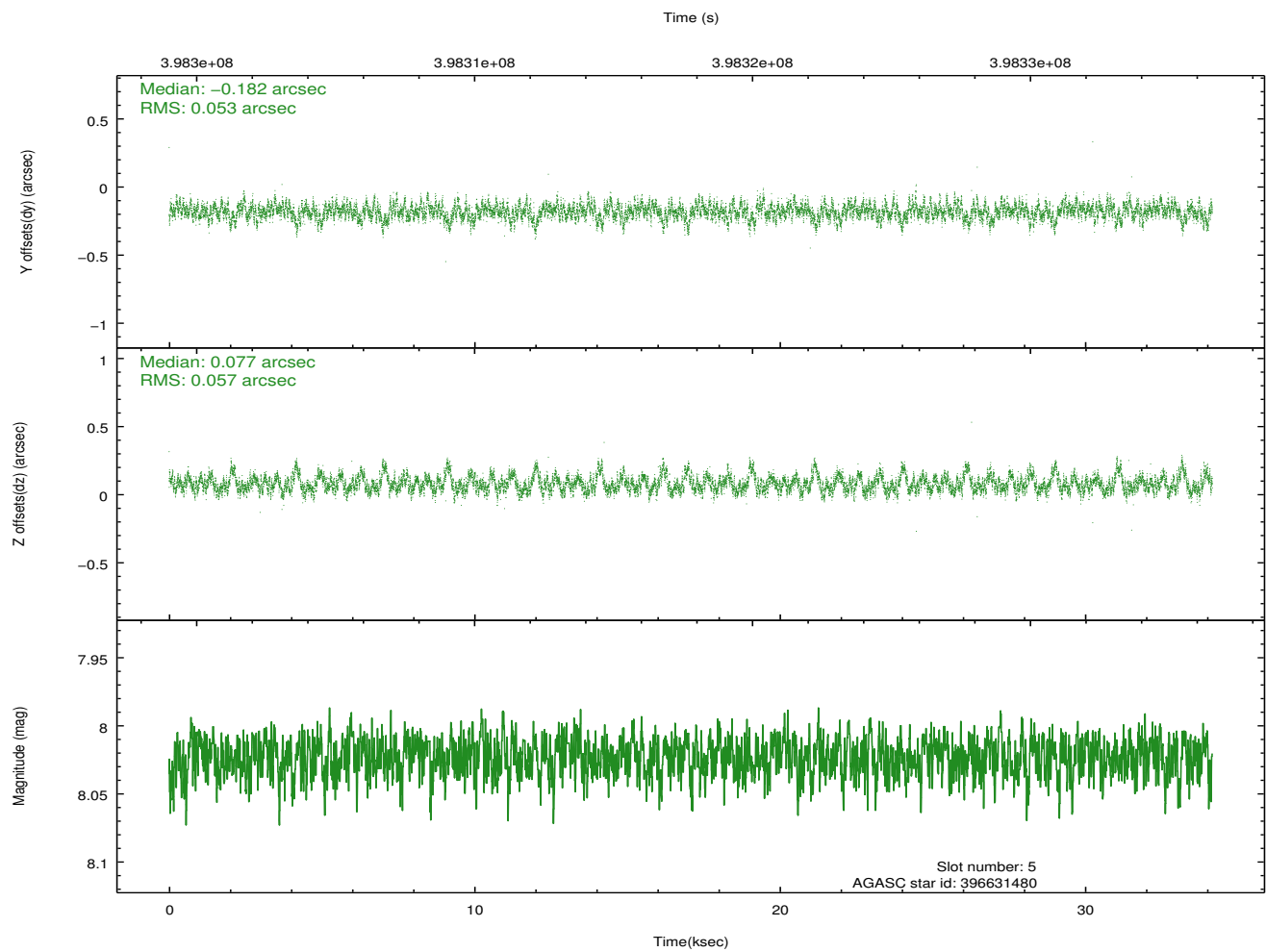
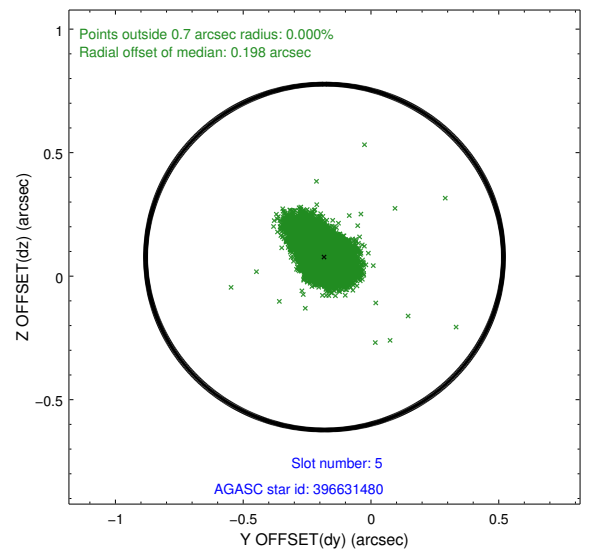
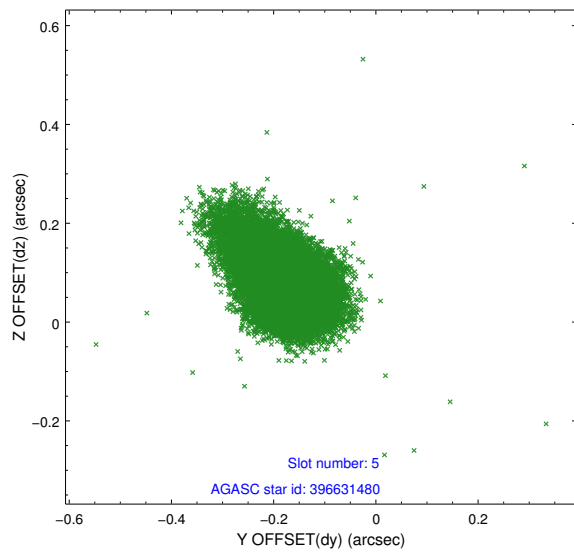
2.4.1 Slot 3



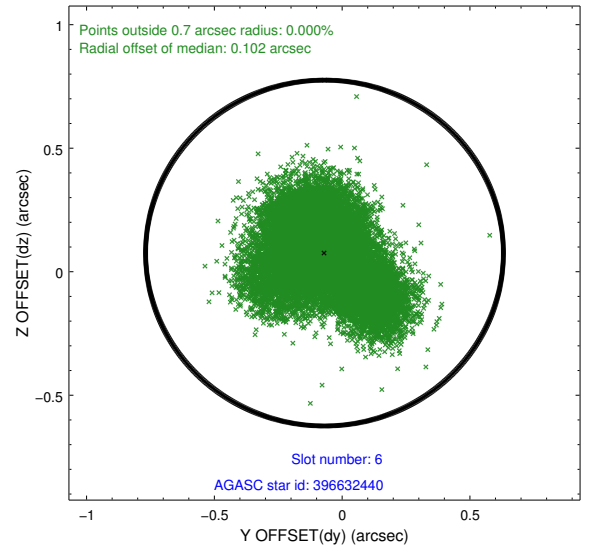
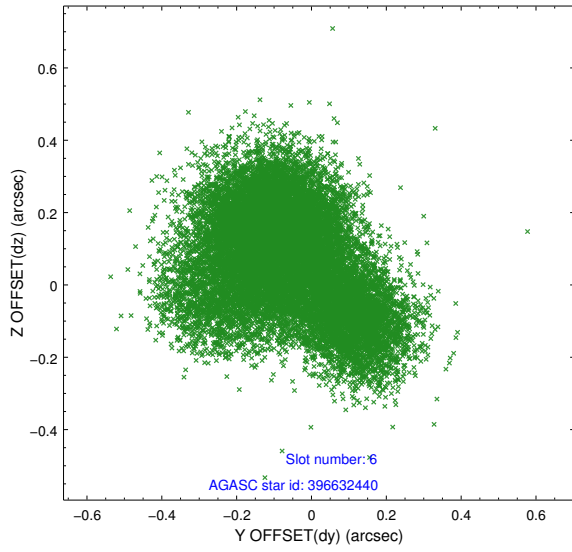
2.4.2 Slot 4



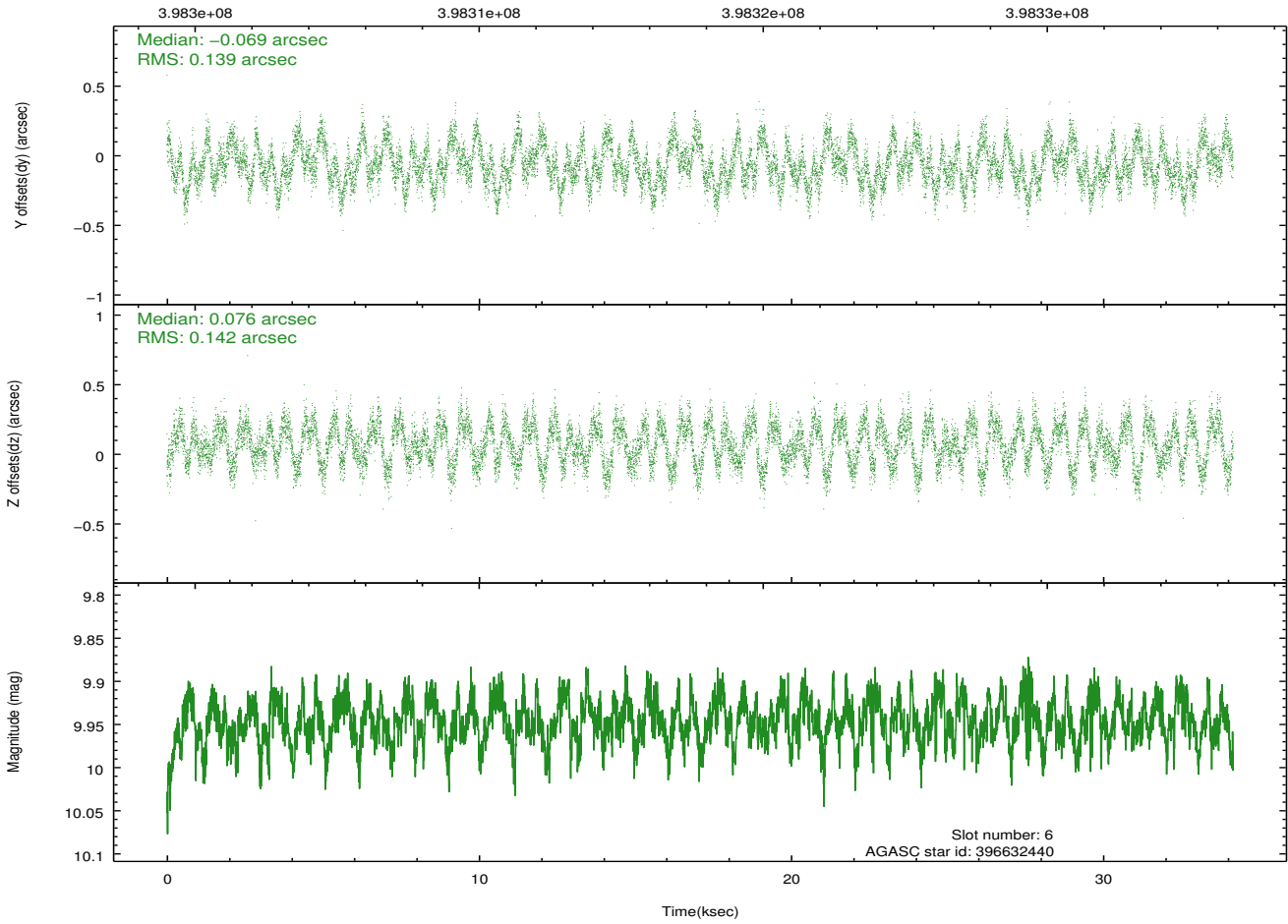
2.4.3 Slot 5



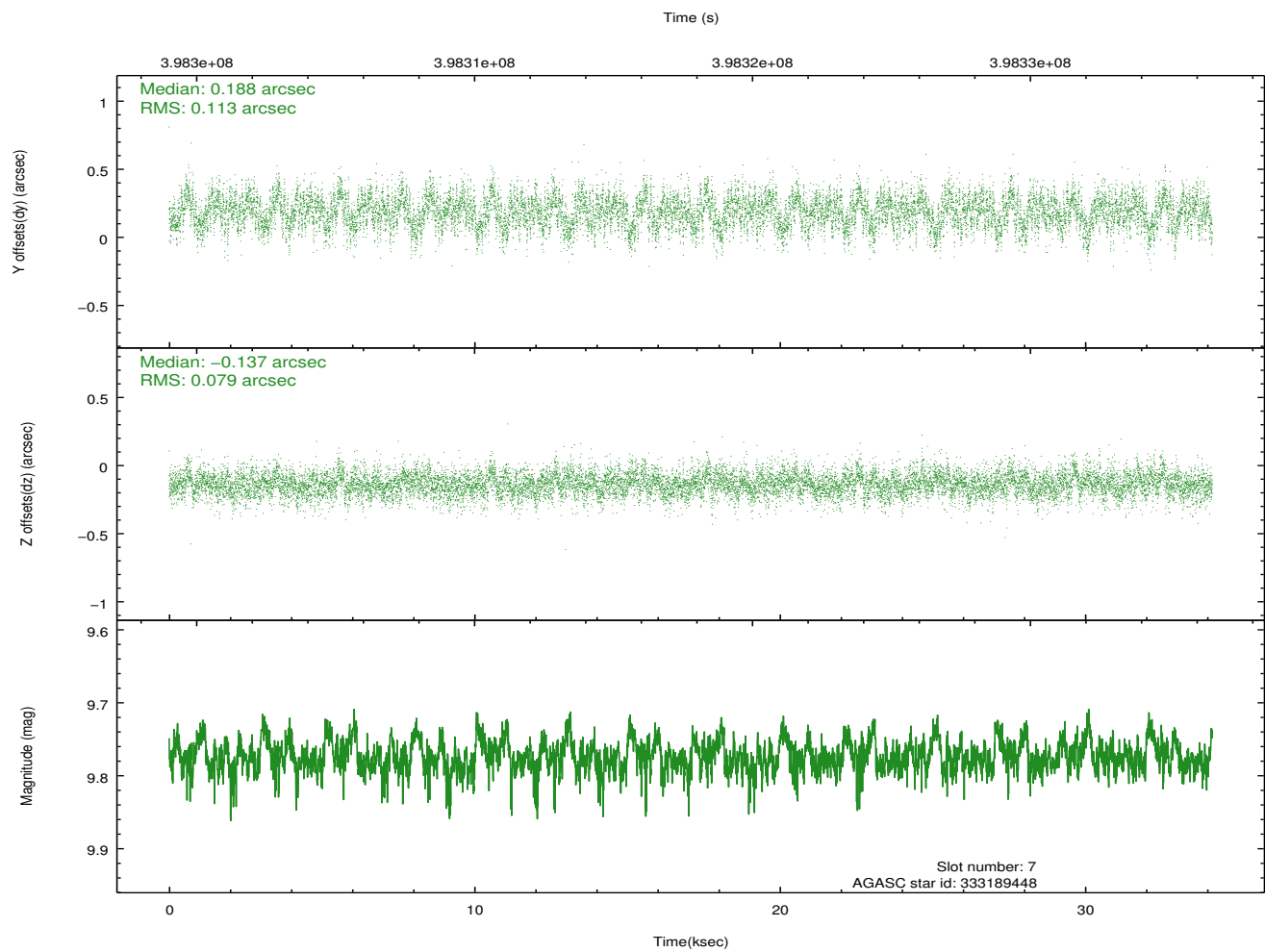
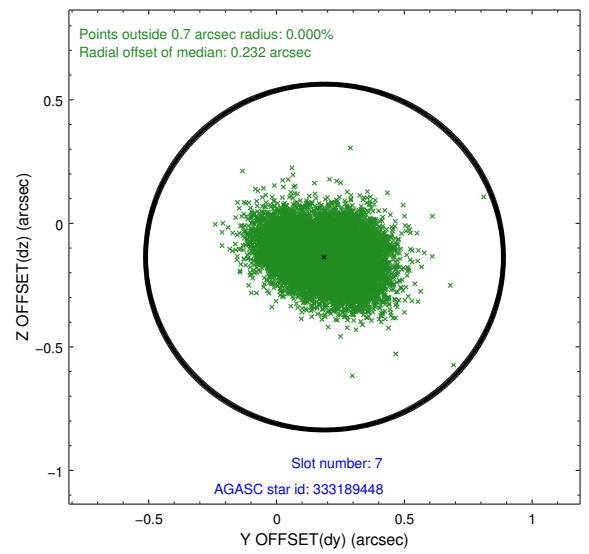
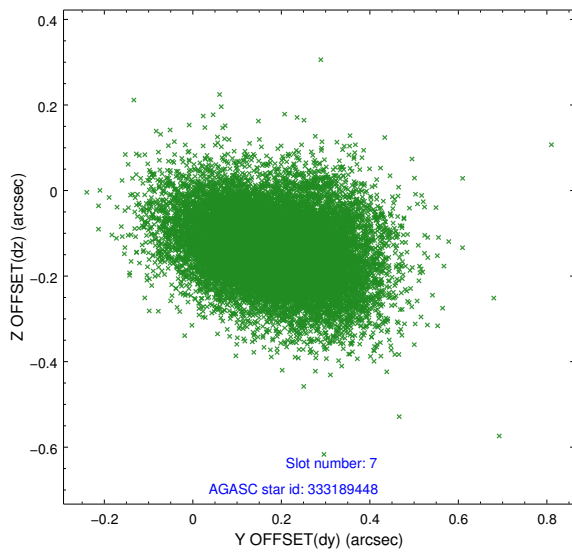
2.4.4 Slot 6



Time (s)

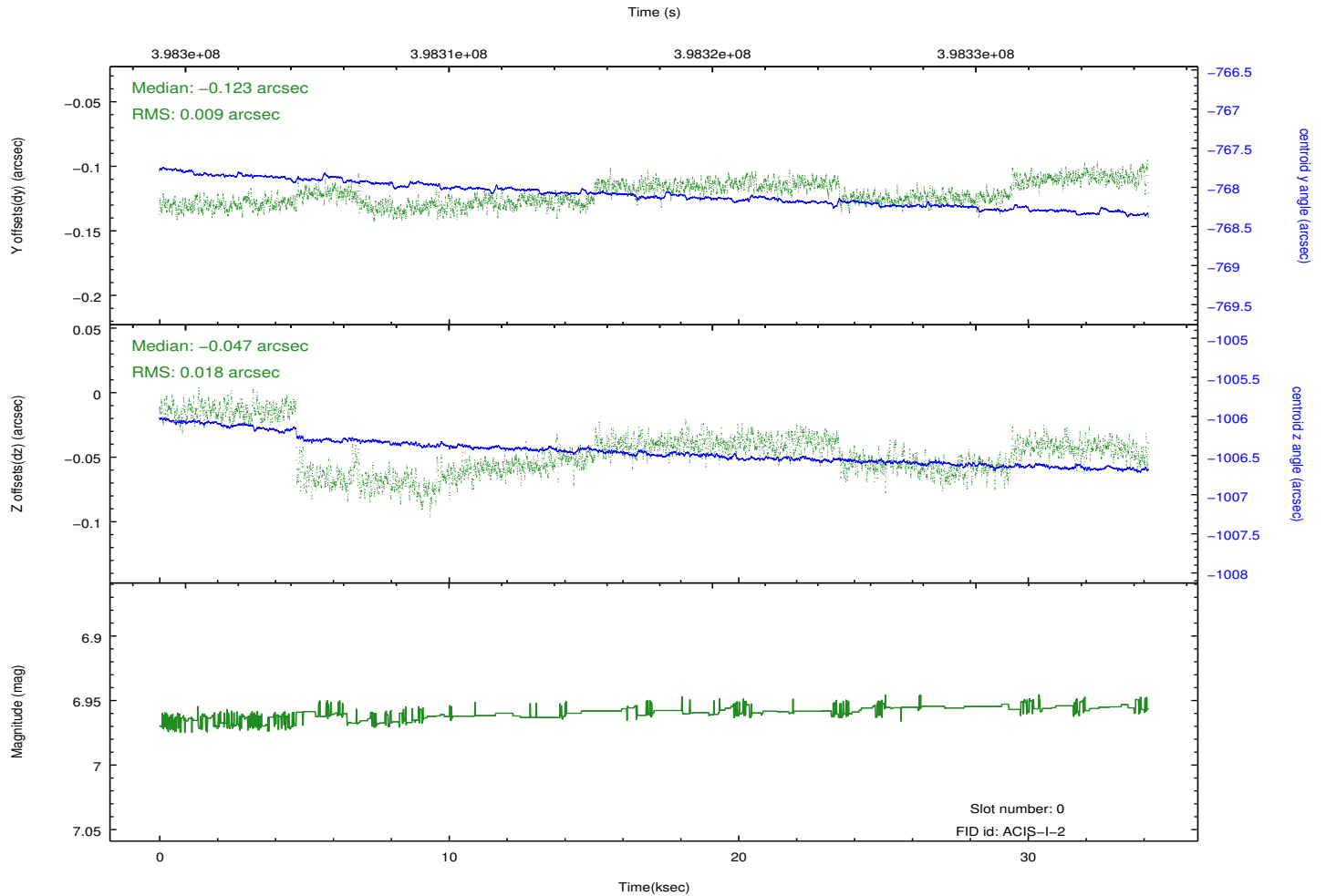
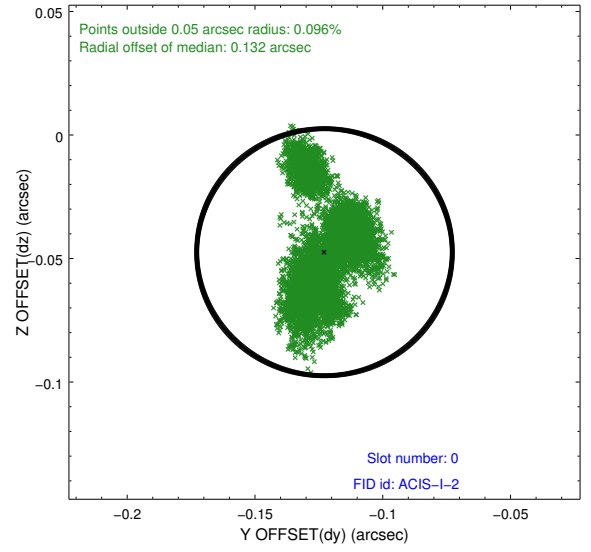
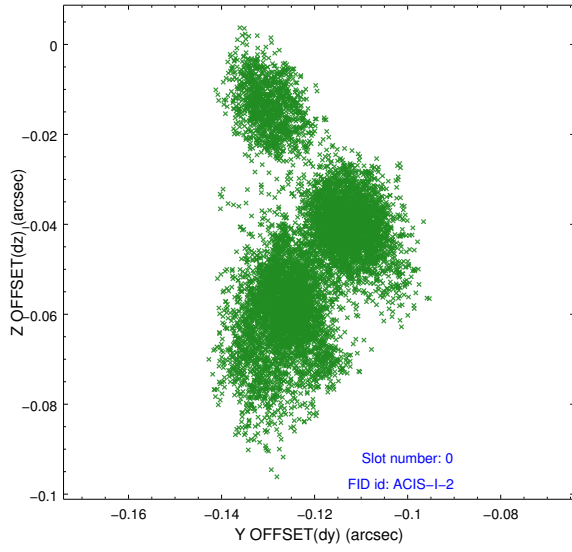


2.4.5 Slot 7

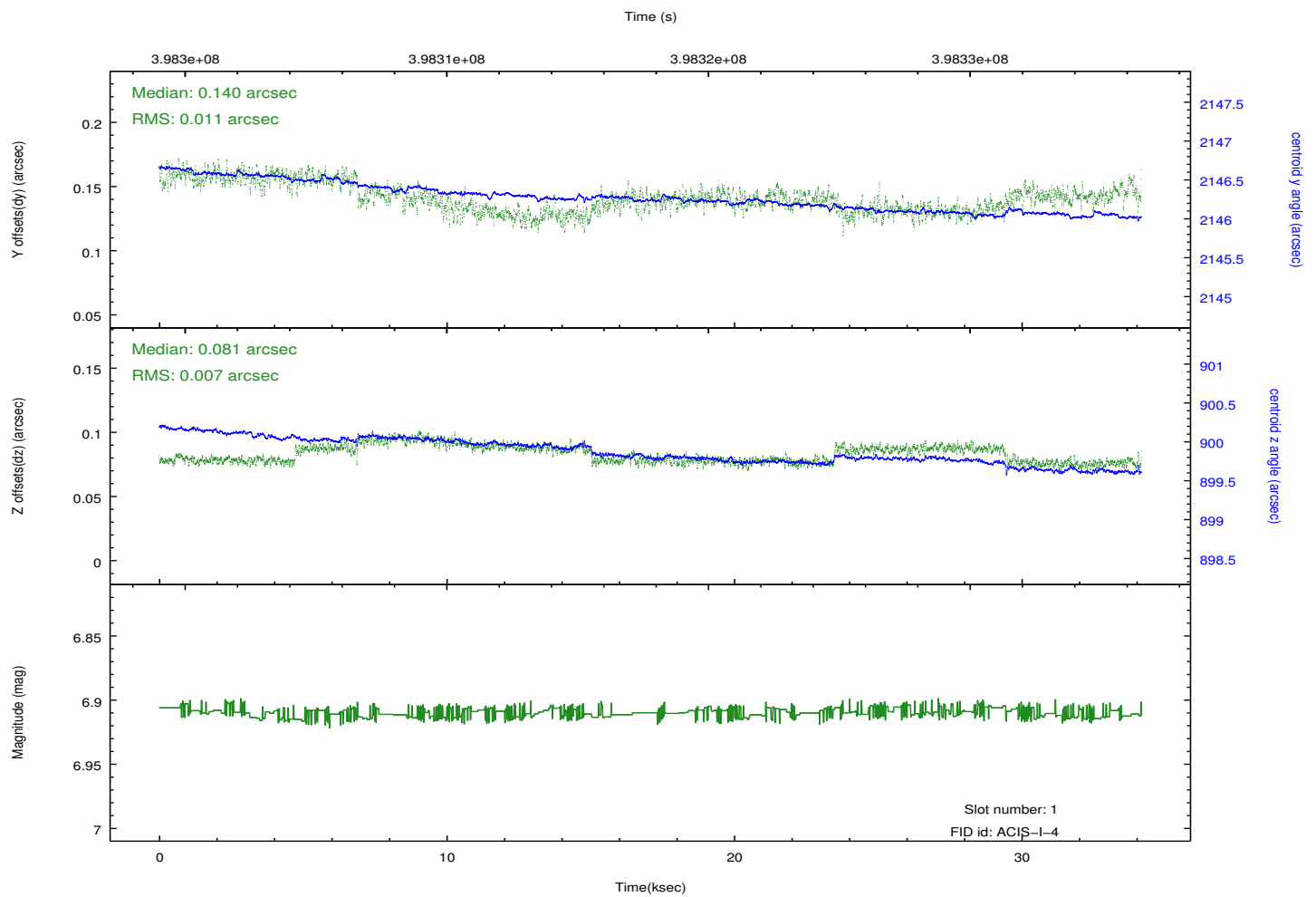
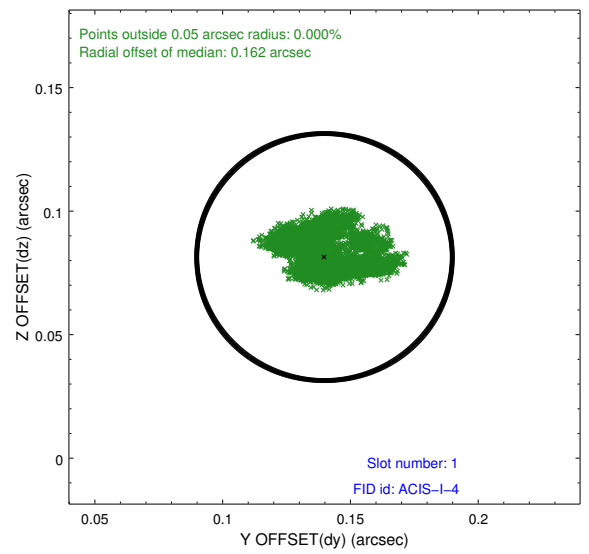
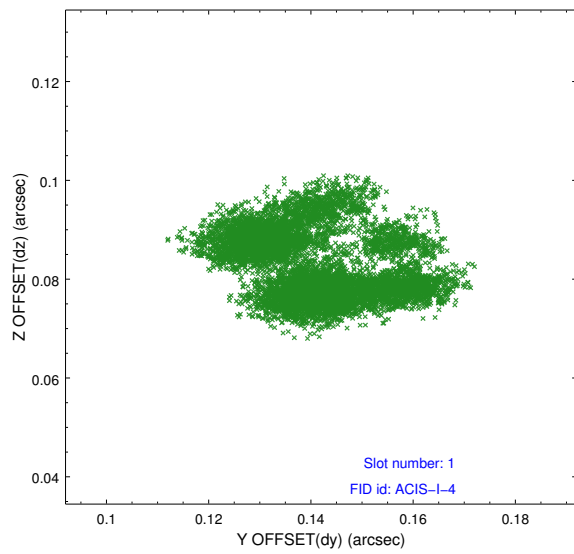


2.5 FID Slots

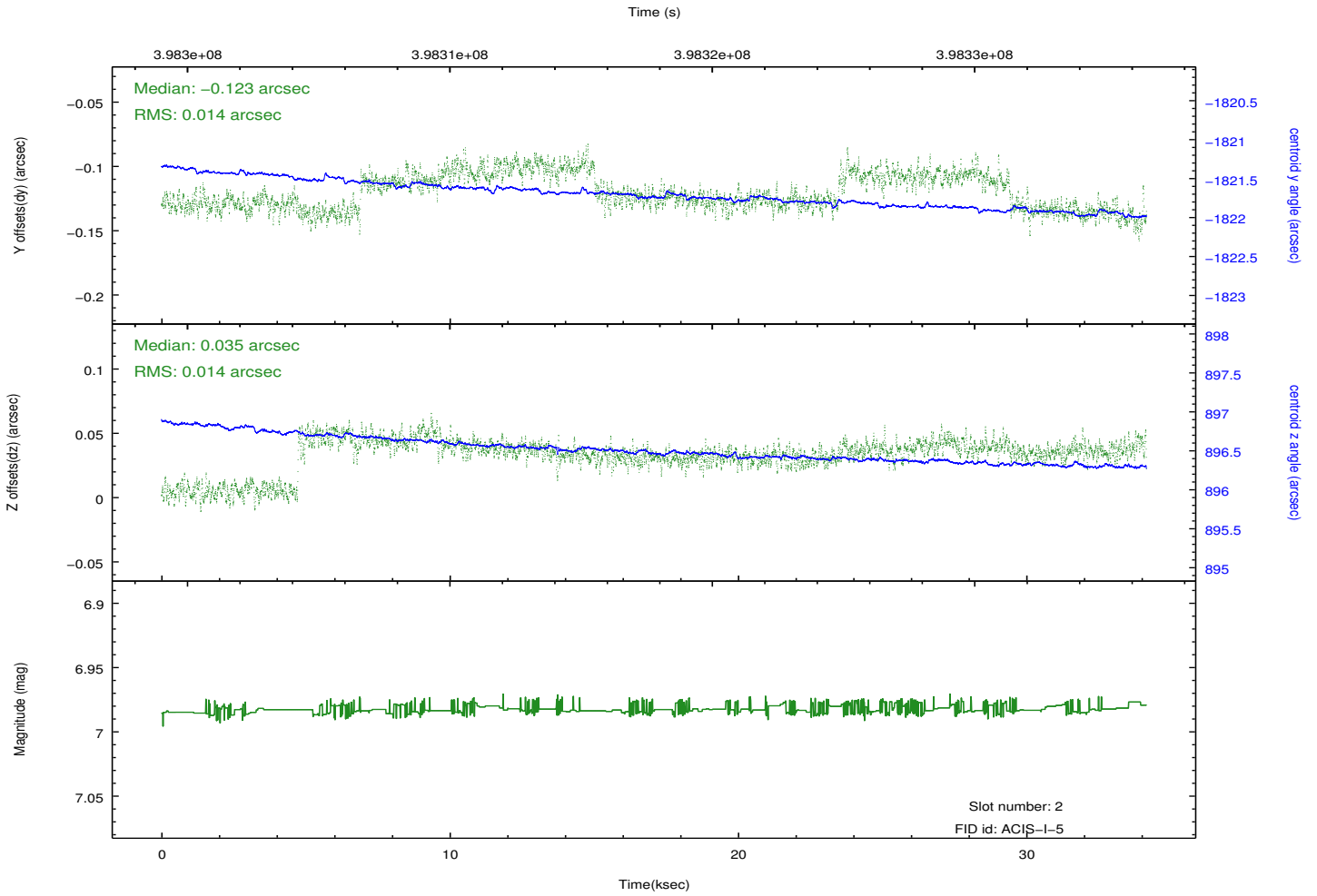
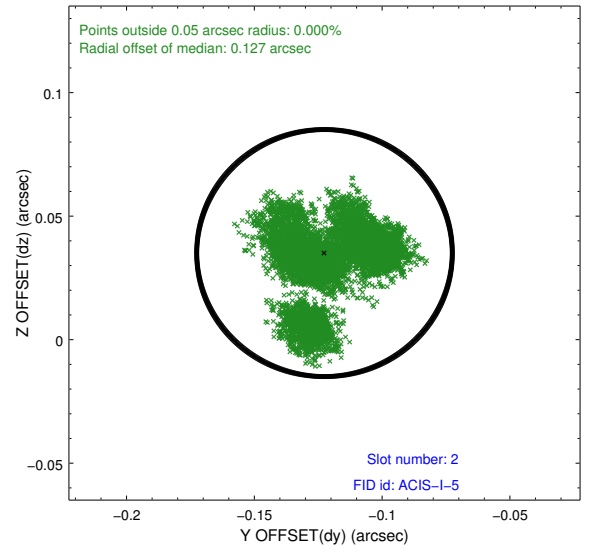
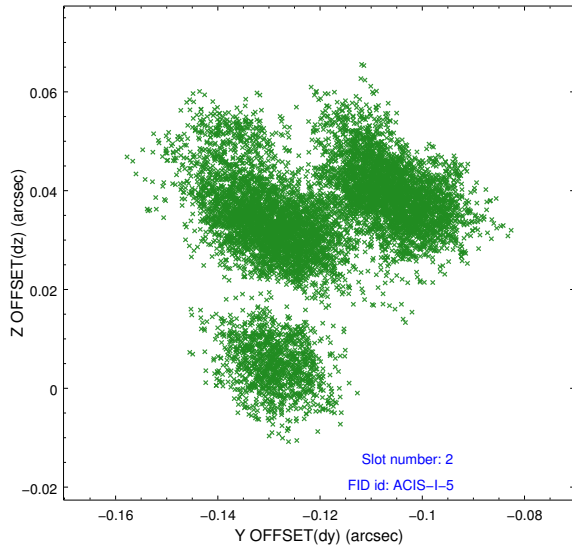
2.5.1 Slot 0



2.5.2 Slot 1



2.5.3 Slot 2



A Summary

A.1 Status

V&V Scientist	Beth Sundheim
V&V Date (YYYY-MM-DD)	2012.07.10
V&V Edition	1
V&V Disposition and Status	OK
V&V Charge Time	34.037775364459

A.2 Comments