

V&V Reference Report

L2 ASCDS Version : 8.4.3

Observation 12316 - L2 Version 2
Chandra X-Ray Center

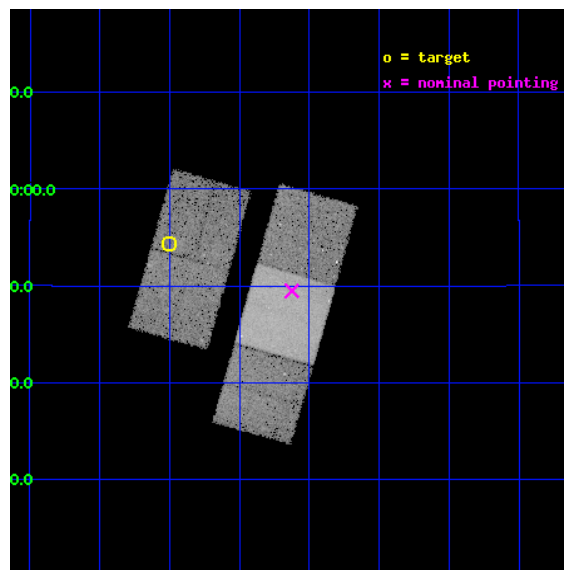
L2 Processing Date : Feb 24 2012

Contents

1	Front	2
2	OBI	3
2.1	OBI	3
2.1.1	Images	3
2.1.2	Bias	3
2.1.3	Parameters	4
2.1.4	Events	4
2.2	Compared Parameters	5
2.3	Aspect	6
2.4	Star Slots	9
2.4.1	Slot 3	9
2.4.2	Slot 4	10
2.4.3	Slot 5	11
2.4.4	Slot 6	12
2.4.5	Slot 7	13
2.5	FID Slots	14
2.5.1	Slot 0	14
2.5.2	Slot 1	15
2.5.3	Slot 2	16
A	Summary	17
A.1	Status	17
A.2	Comments	17

1 Front

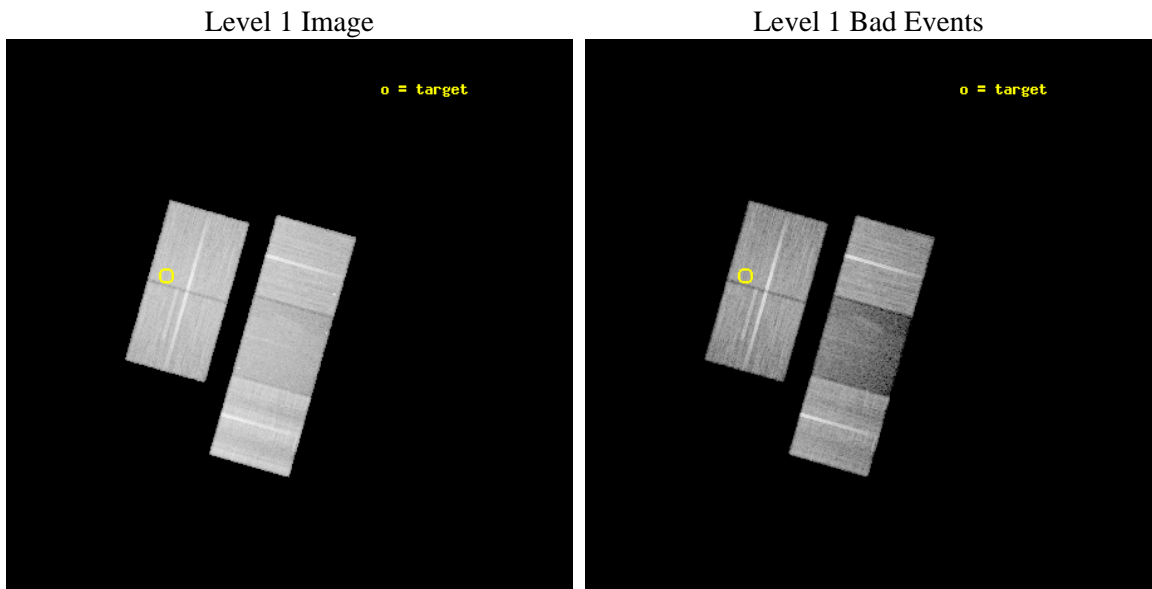
seq_num	100073	Sequence number
obs_id	12316	Observation id
title	Effects of Coronal Mass Ejection (CME) propagation on planetary aurorae: the Chandra view	Proposal title
observer	Prof. Graziella Branduardi-Raymont	Principal investigator
object	Jupiter	Source name
dtcycle	0	
cycle	P	events from which exps? Prim/Second/Both
ra_targ	36.499875	Observer's specified target RA [deg]
dec_targ	12.905556	Observer's specified target Dec [deg]
ra_nom	36.281106396229	Nominal RA [deg]
dec_nom	12.824855842742	Nominal Dec [deg]
roll_nom	105.86271751975	Nominal Roll [deg]
revision	2	Processing version of data
ontime	40129.418258011	Sum of GTIs [s]
livetime	39605.097865622	Livetime [s]
ontime2	40129.418258011	Sum of GTIs [s]
ontime3	40135.700308681	Sum of GTIs [s]
ontime6	40135.700308681	Sum of GTIs [s]
ontime7	40135.700308681	Sum of GTIs [s]
ontime8	40129.418257952	Sum of GTIs [s]
l2events	138160	Number of level 2 events



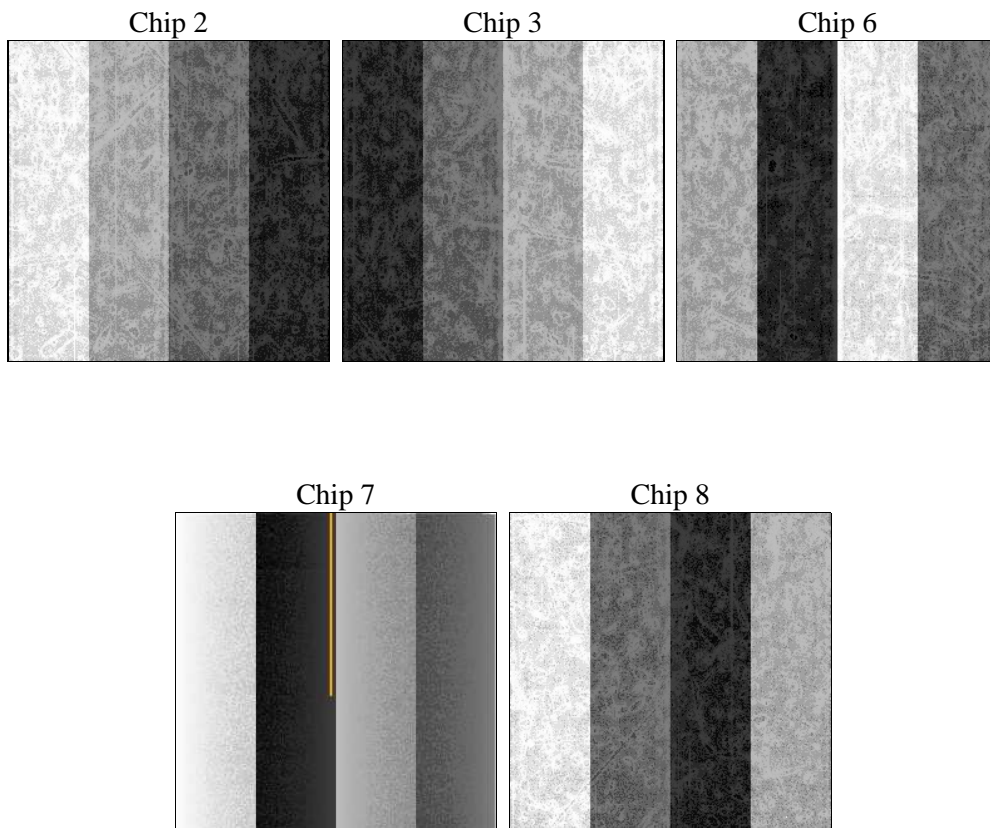
2 OBI

2.1 OBI

2.1.1 Images



2.1.2 Bias



2.1.3 Parameters

obi_num	0	Obi number	sched_exp_time	40000.000000	[s] Scheduled observation exposure time
ascdsver	8.4.3	Processing system revision	ontime	40129.418258011	Sum of GTIs [s]
caldbver	4.4.8	 	ontime2	40129.418258011	Sum of GTIs [s]
date	2012-02-24T05:01:36	Date and time of file creation	ontime3	40135.700308681	Sum of GTIs [s]
revision	2	Processing version of data	ontime6	40135.700308681	Sum of GTIs [s]
			ontime7	40135.700308681	Sum of GTIs [s]
			ontime8	40129.418257952	Sum of GTIs [s]
			l1events	955806	Number of level 1 events

2.1.4 Events

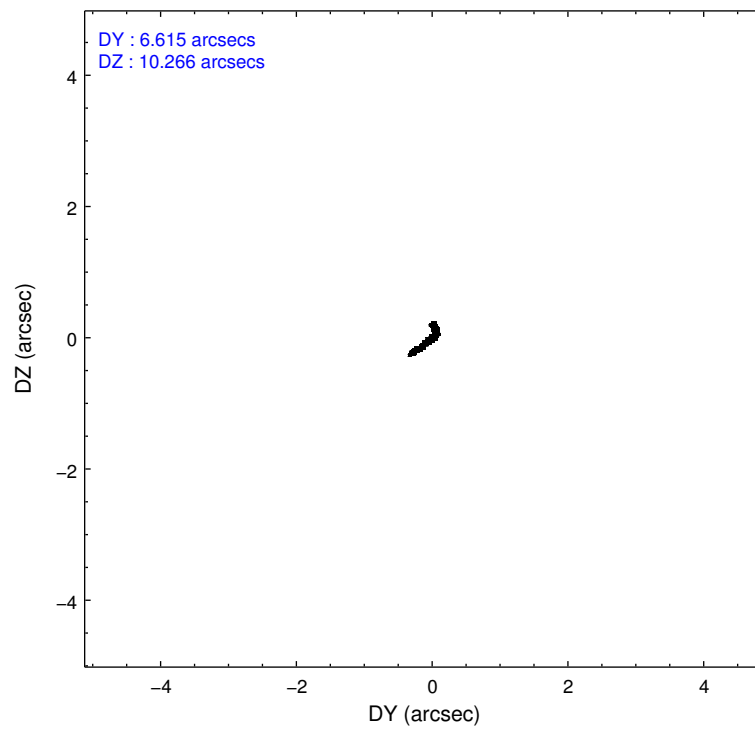
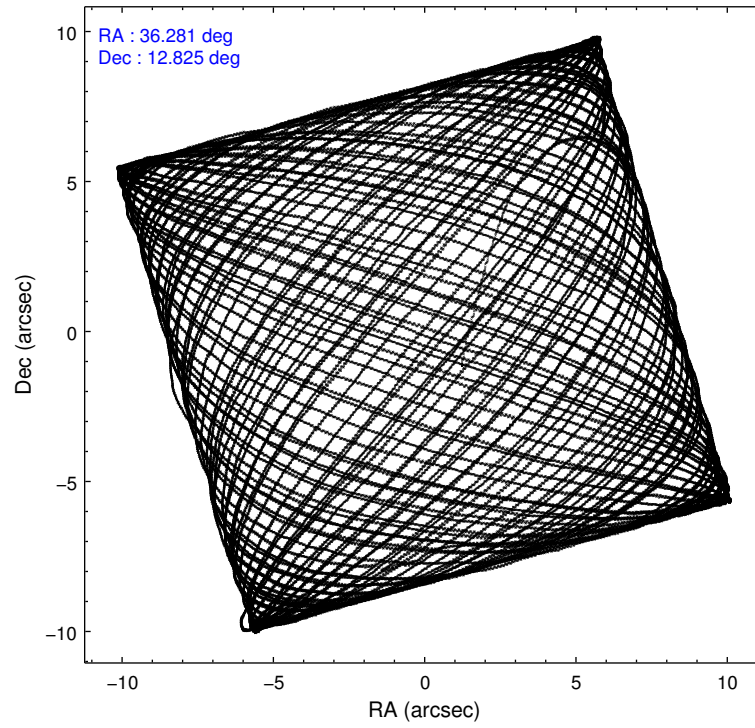
	ccd 2	ccd 3	ccd 6	ccd 7	ccd 8
level 1 events	191876	185289	194289	138676	245676
rejected events	173179	166838	173642	65789	174457
rejected %	90%	90%	89%	47%	71%

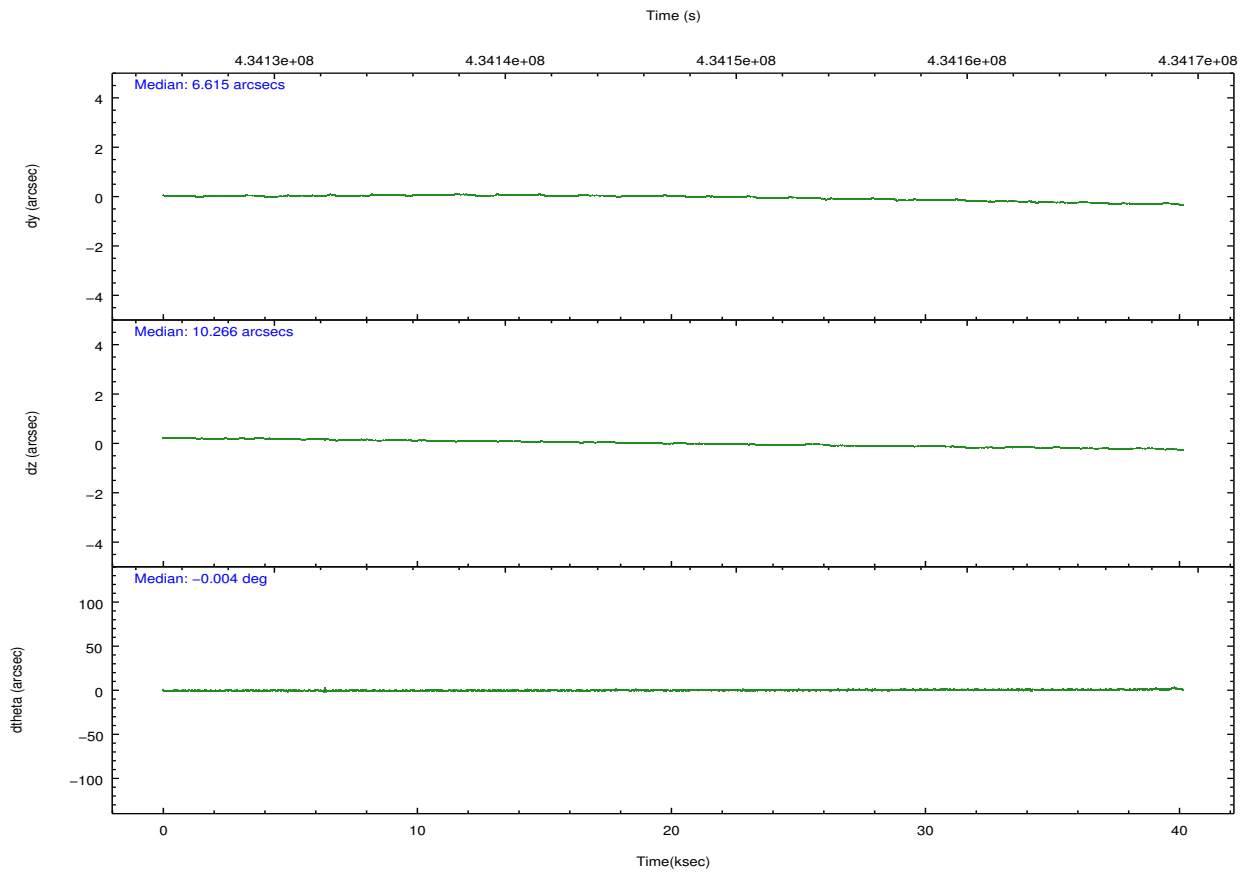
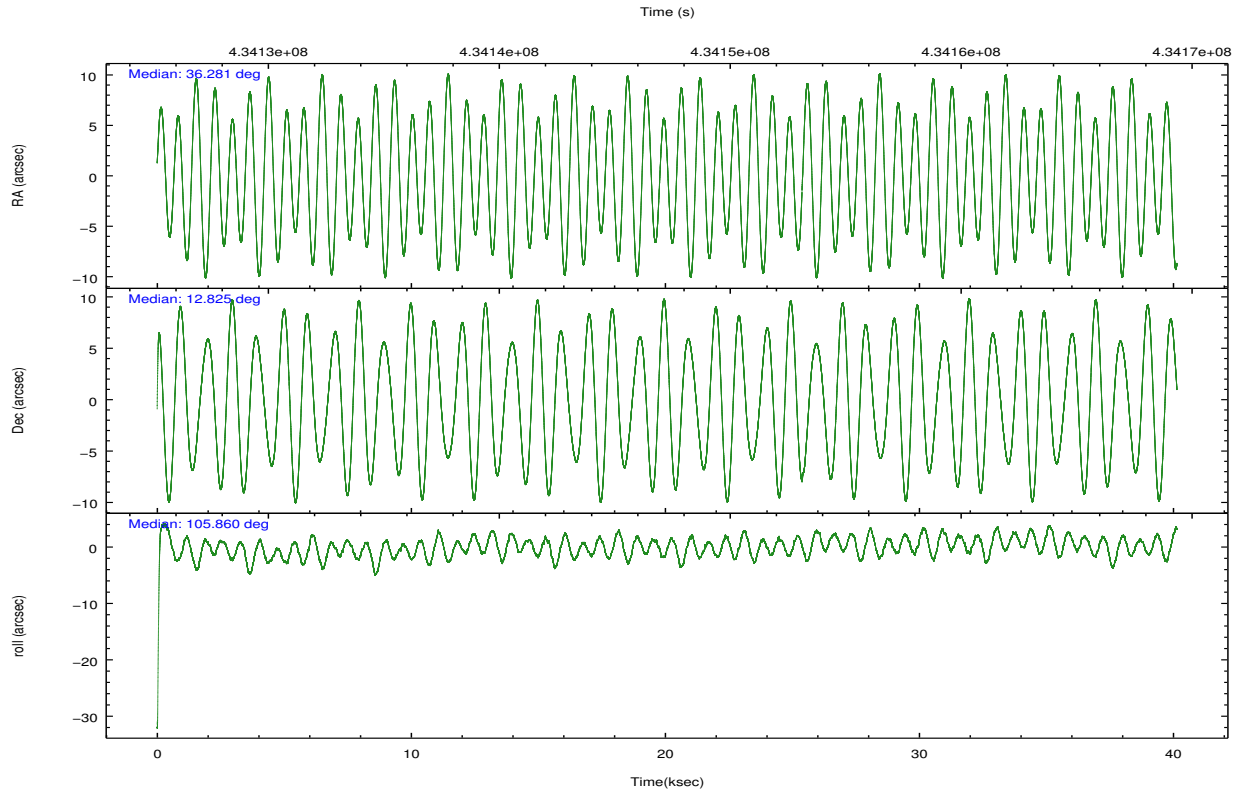
	ccd 2	ccd 3	ccd 6	ccd 7	ccd 8
grade 0 events	7524	7595	8497	8052	20287
	3%	4%	4%	5%	8%
grade 1 events	98	106	97	277	216
	0%	0%	0%	0%	0%
grade 2 events	4526	4040	4655	17594	17166
	2%	2%	2%	12%	6%
grade 3 events	1918	2000	2019	6304	7693
	0%	1%	1%	4%	3%
grade 4 events	1983	1949	2048	6157	7232
	1%	1%	1%	4%	2%
grade 5 events	4153	5157	4975	14269	8454
	2%	2%	2%	10%	3%
grade 6 events	2846	2963	3525	35122	19160
	1%	1%	1%	25%	7%
grade 7 events	168828	161479	168473	50901	165468
	87%	87%	86%	36%	67%

2.2 Compared Parameters

Parameter	Planned	Actual	Parameter	Planned	Actual
Instrument	ACIS	ACIS	Obspar format version number	7	7
Detector	ACIS-23678	ACIS-23678	Obspar file type	PREDICTED	ACTUAL
Grating	NONE	NONE	Obspar update status	NONE	UPDATED
Data mode	VFAINT	VFAINT	Number of optional ACIS chips dropped	0	0
Observation mode	POINTING	POINTING	On-chip summing requested	N	N
[deg] Pointing RA	36.301497	36.28110639622904	Subarray requested	NONE	NONE
[deg] Pointing Dec	12.806079	12.82485584274172	Alternating exposures requested	N	N
[deg] Pointing Roll	105.701580	105.8627175197488	[s] Primary exposure time	0.000000	3.1
[mm] SIM focus pos	-0.684267	-0.6828225247311905			
[mm] SIM defocus	0	0.001444936568705701			
[mm] SIM translation stage pos	-190.132523	-190.1400660498719			
[mm] SIM translation stage offset	0	0.00754346686406393			
[s] Observation start time (MET)	434127335.184000	434126054.2563			
Observation start date	2011-10-04T14:54:29	2011-10-04T14:34:14			
[s] Observation end time (MET)	434167335.184000	434168365.74602			
Observation end date	2011-10-05T02:01:09	2011-10-05T02:19:25			
Read mode	TIMED	TIMED			

2.3 Aspect



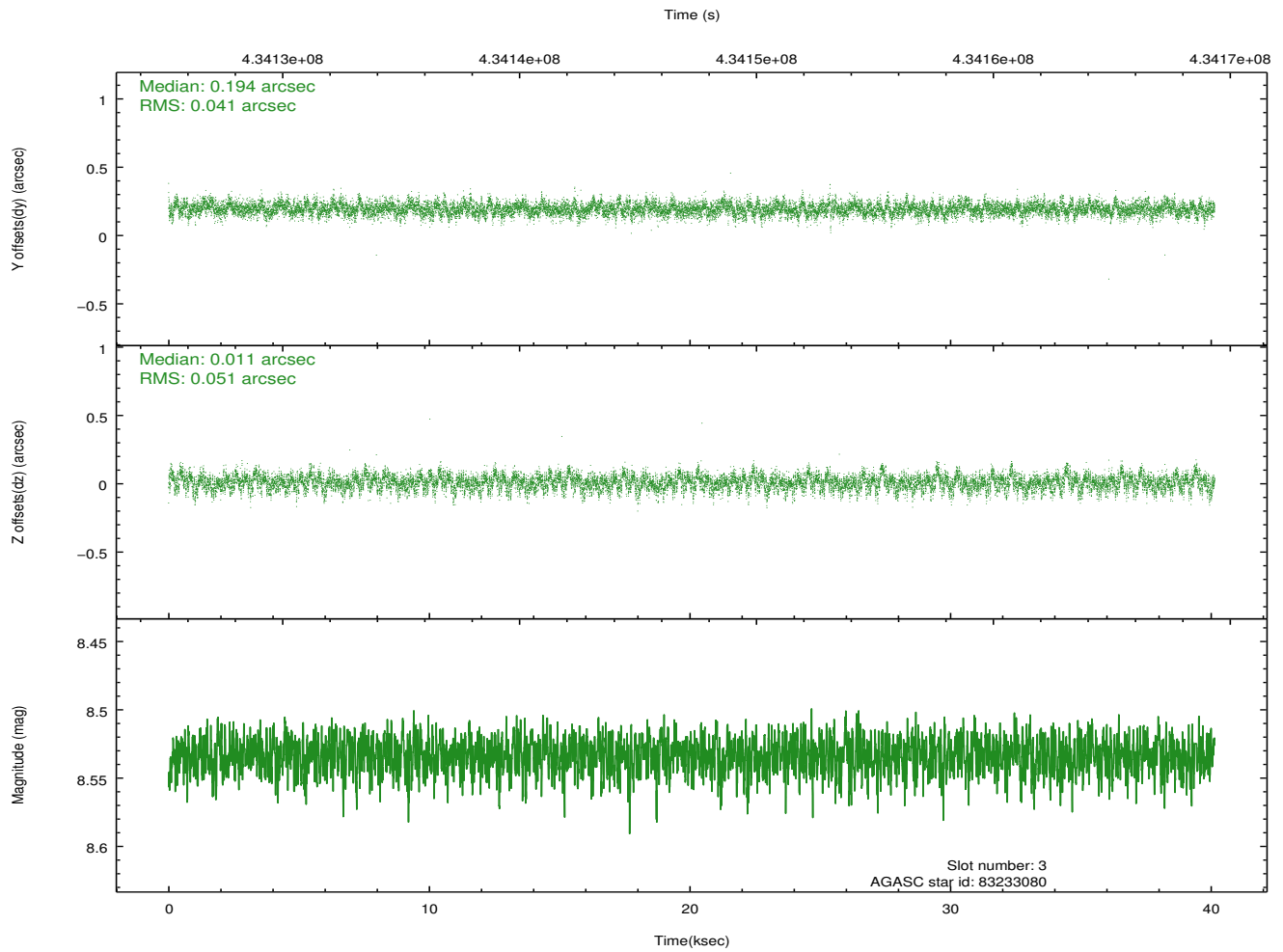
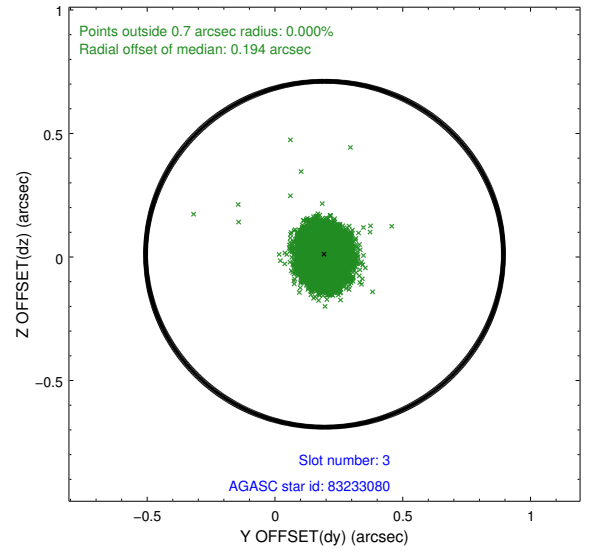
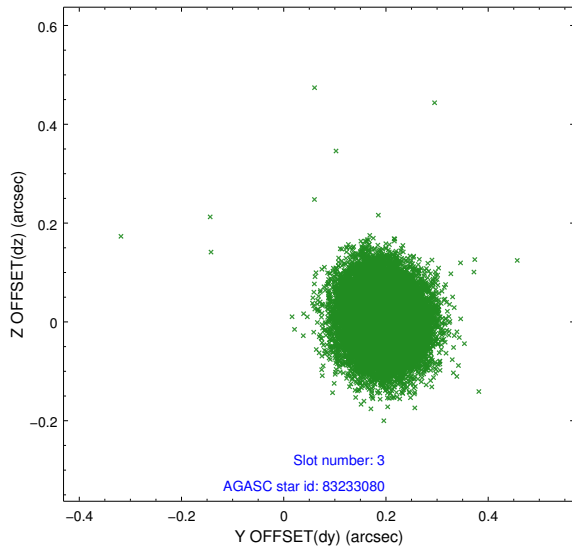


Slot Statistics

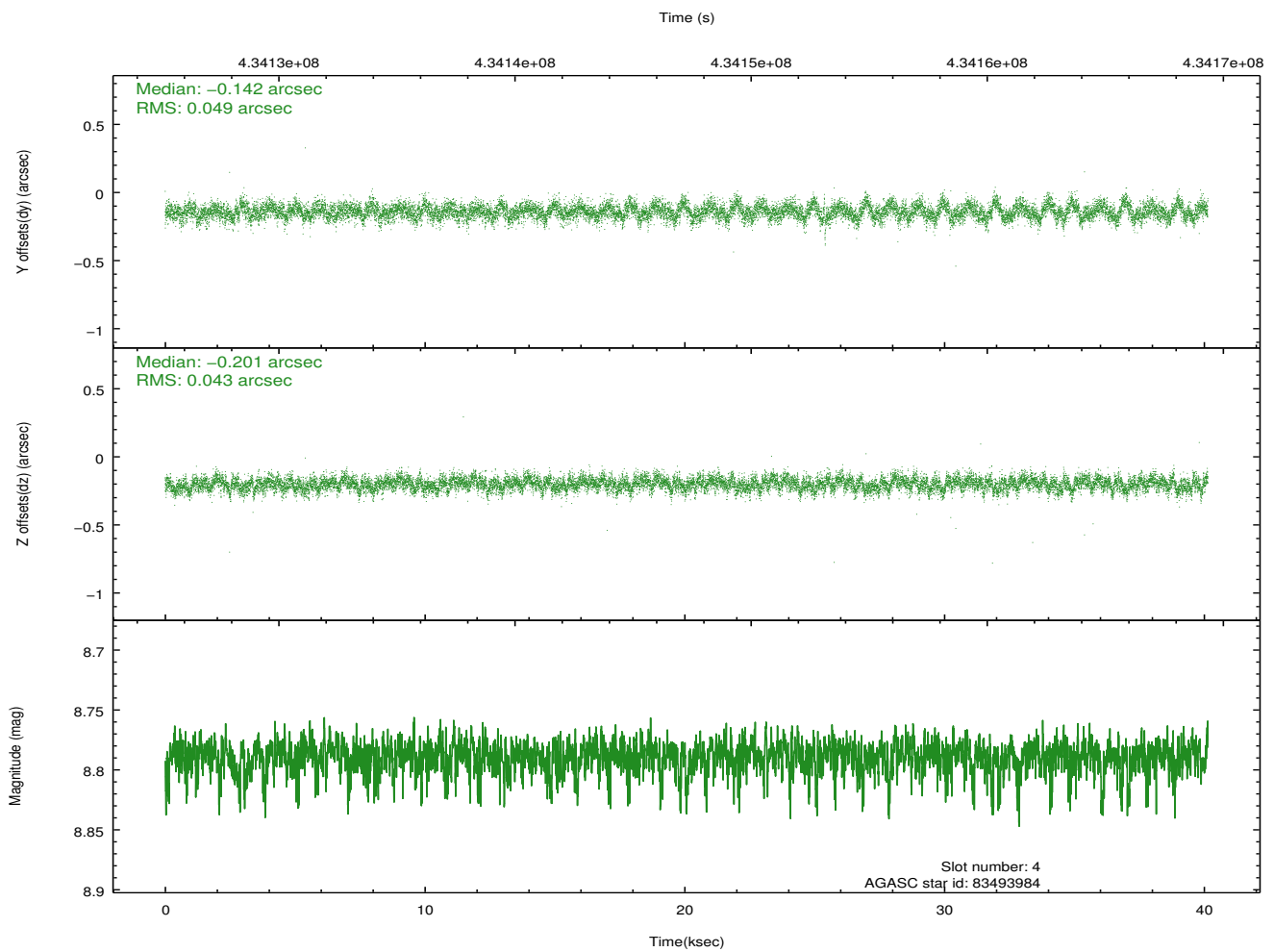
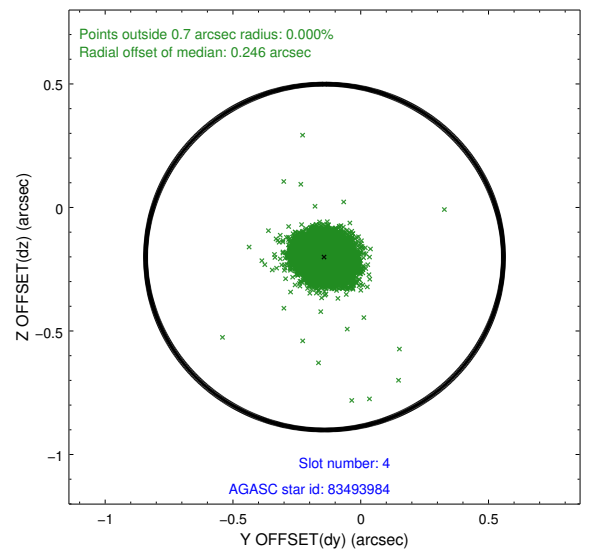
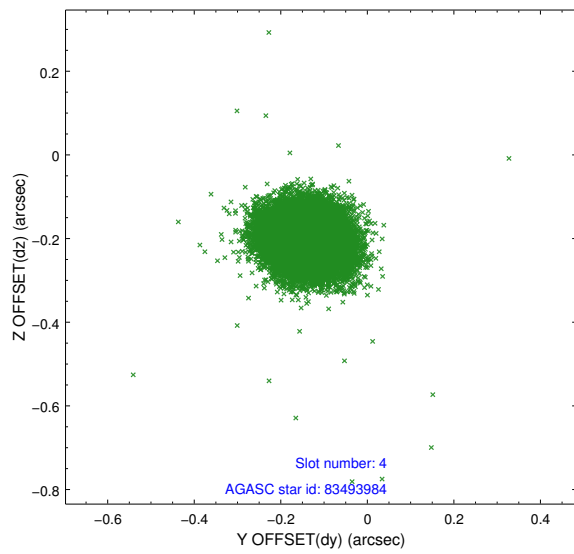
slot	status	id	mag	n_pts	med_dy	med_dz	dr1	dr2	ra	dec	mean_y	mean_z
0	FID	ACIS-S-2	6.97	9791	-0.115	-0.088	0.006	0.011	0.000000	0.000000	-759.43	-1731.60
1	FID	ACIS-S-4	7.06	9790	0.133	0.048	0.007	0.011	0.000000	0.000000	2154.10	176.99
2	FID	ACIS-S-6	7.20	9790	-0.046	0.048	0.008	0.013	0.000000	0.000000	402.66	814.41
3	GUIDE	83233080	8.53	19573	0.194	0.011	0.069	0.113	36.957124	12.454444	-1839.26	-1876.94
4	GUIDE	83493984	8.79	19574	-0.142	-0.201	0.069	0.111	35.548684	13.181335	2018.17	2173.46
5	GUIDE	83625344	8.43	19557	-0.120	0.186	0.073	0.116	36.960389	12.957487	-97.62	-2373.25
6	GUIDE	83631240	9.07	19531	0.173	0.034	0.099	0.154	36.288290	13.402411	2079.93	-536.87
7	GUIDE	83631872	9.10	19563	-0.106	-0.029	0.074	0.122	36.320406	13.345695	1852.54	-589.35

2.4 Star Slots

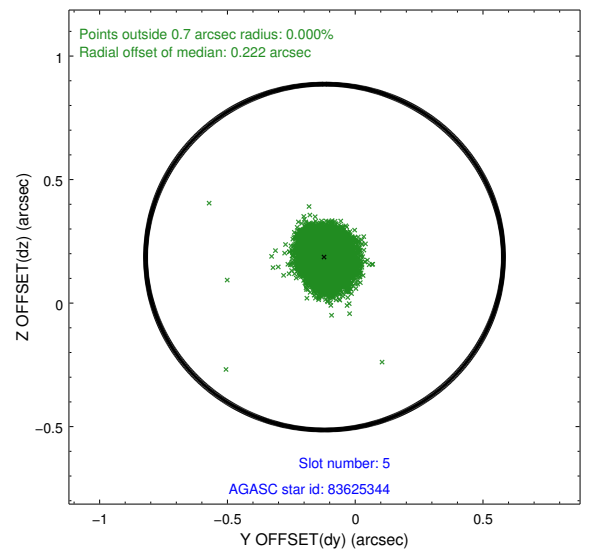
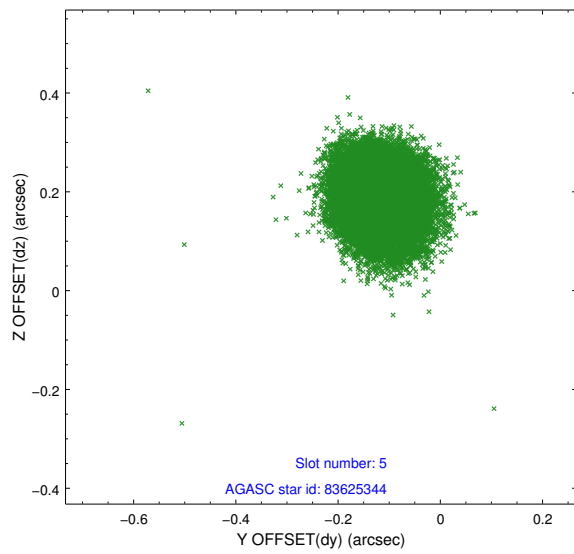
2.4.1 Slot 3



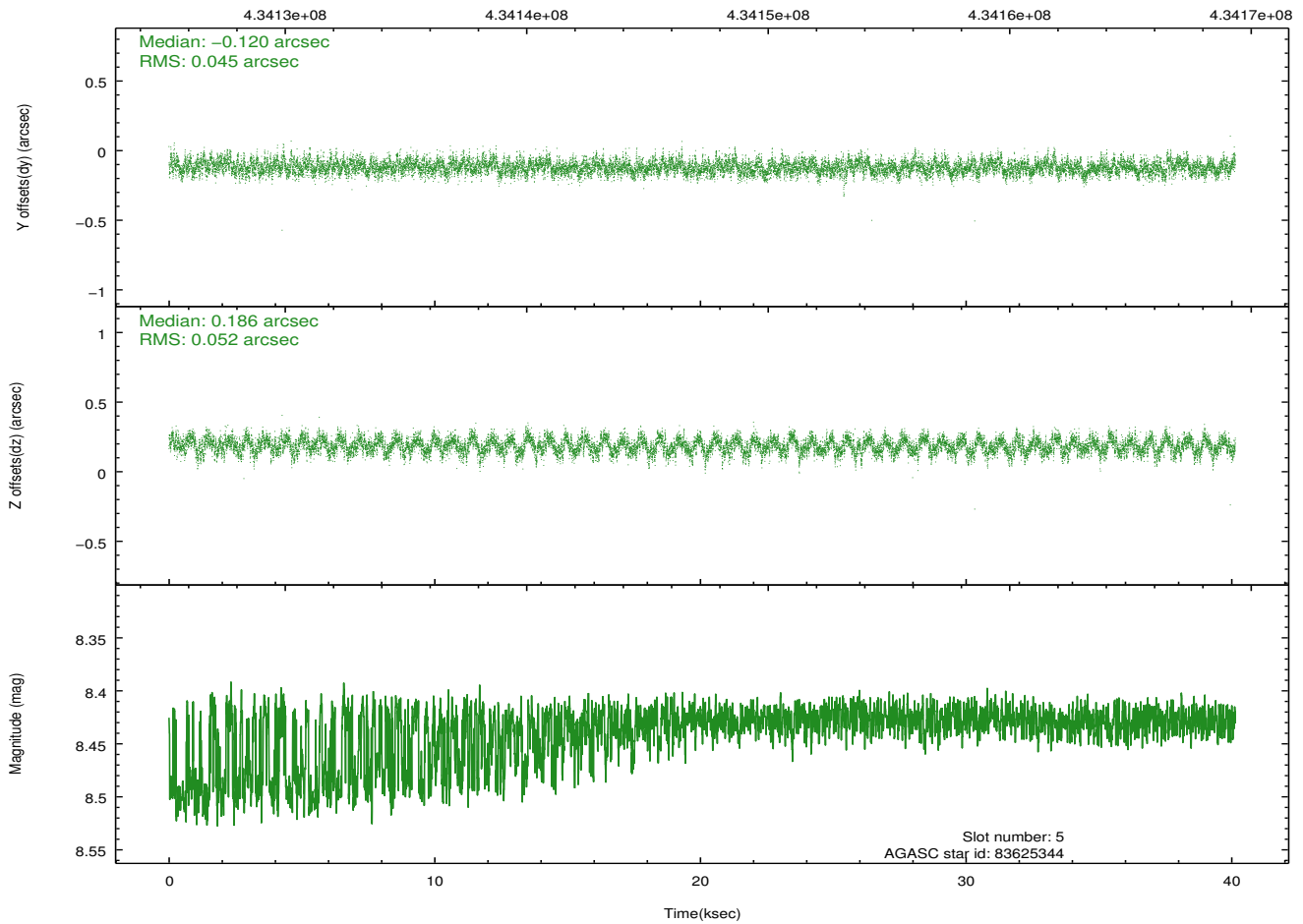
2.4.2 Slot 4



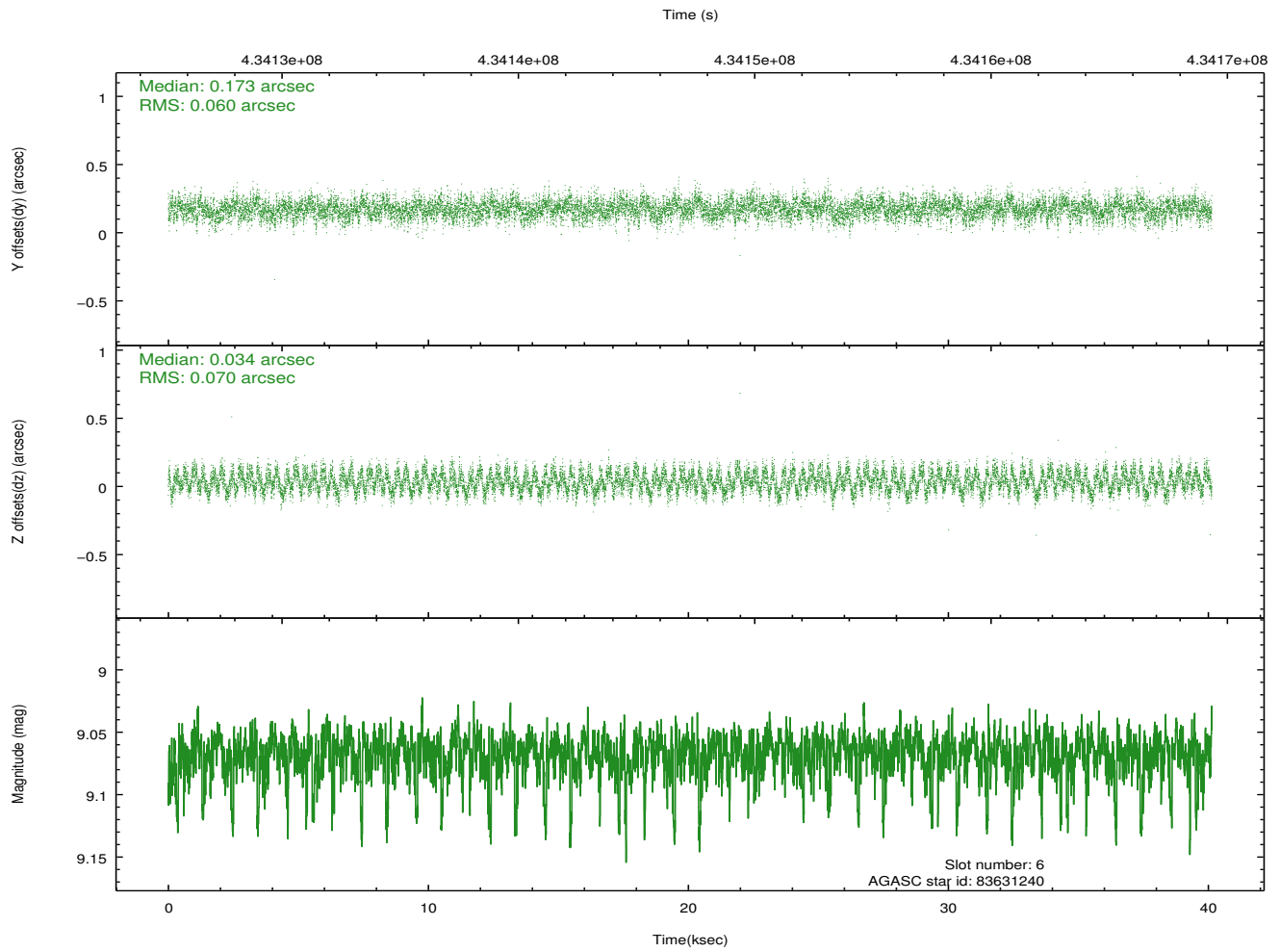
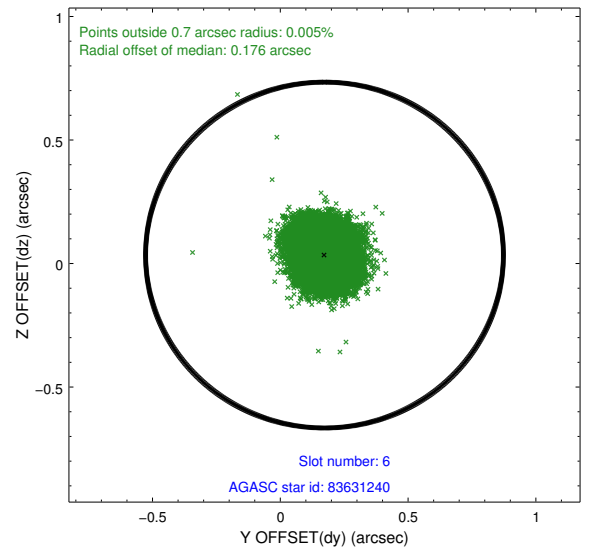
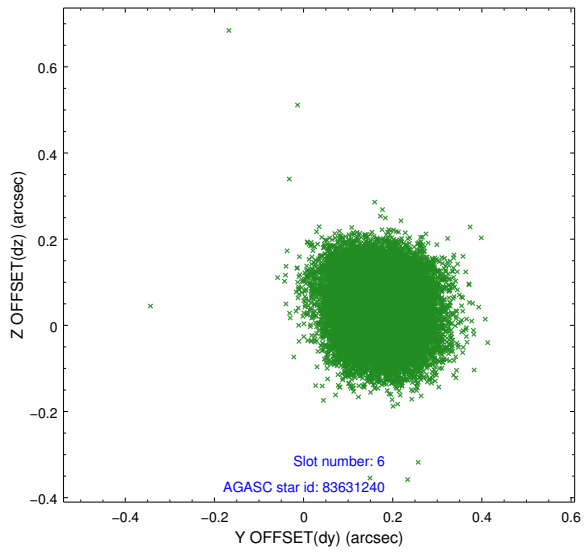
2.4.3 Slot 5



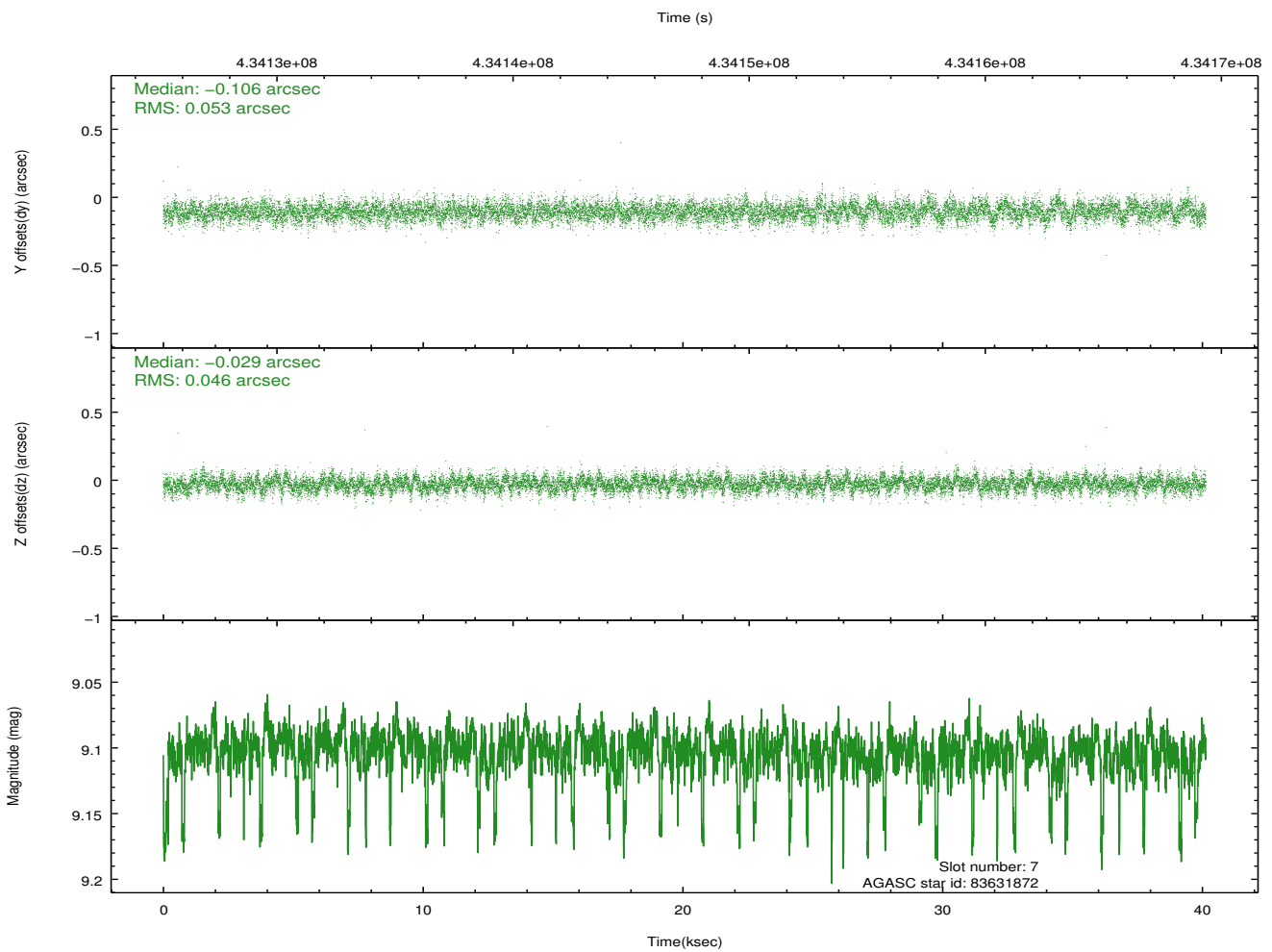
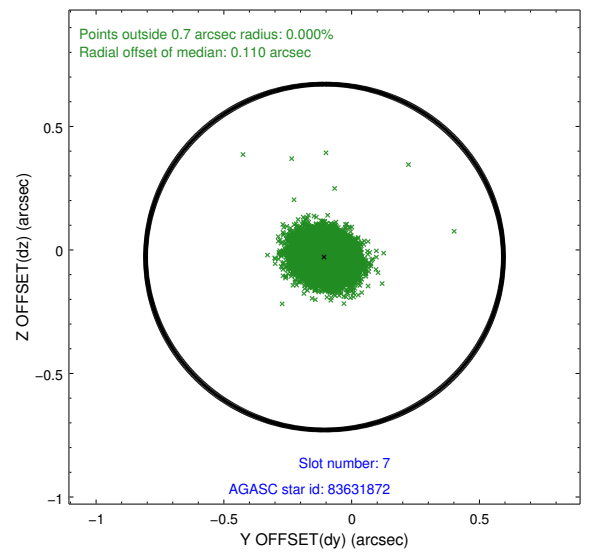
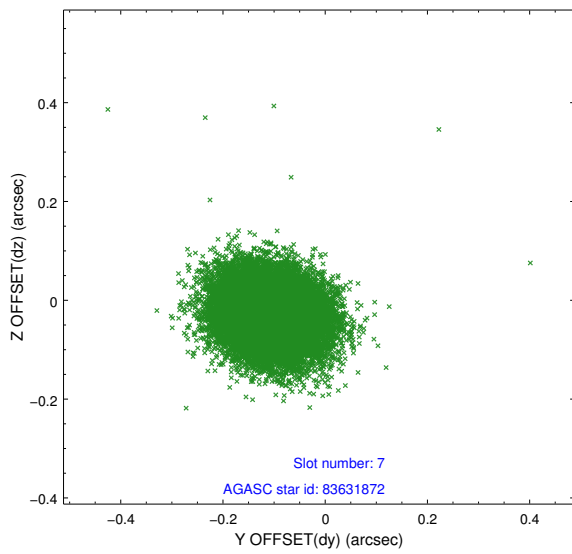
Time (s)



2.4.4 Slot 6

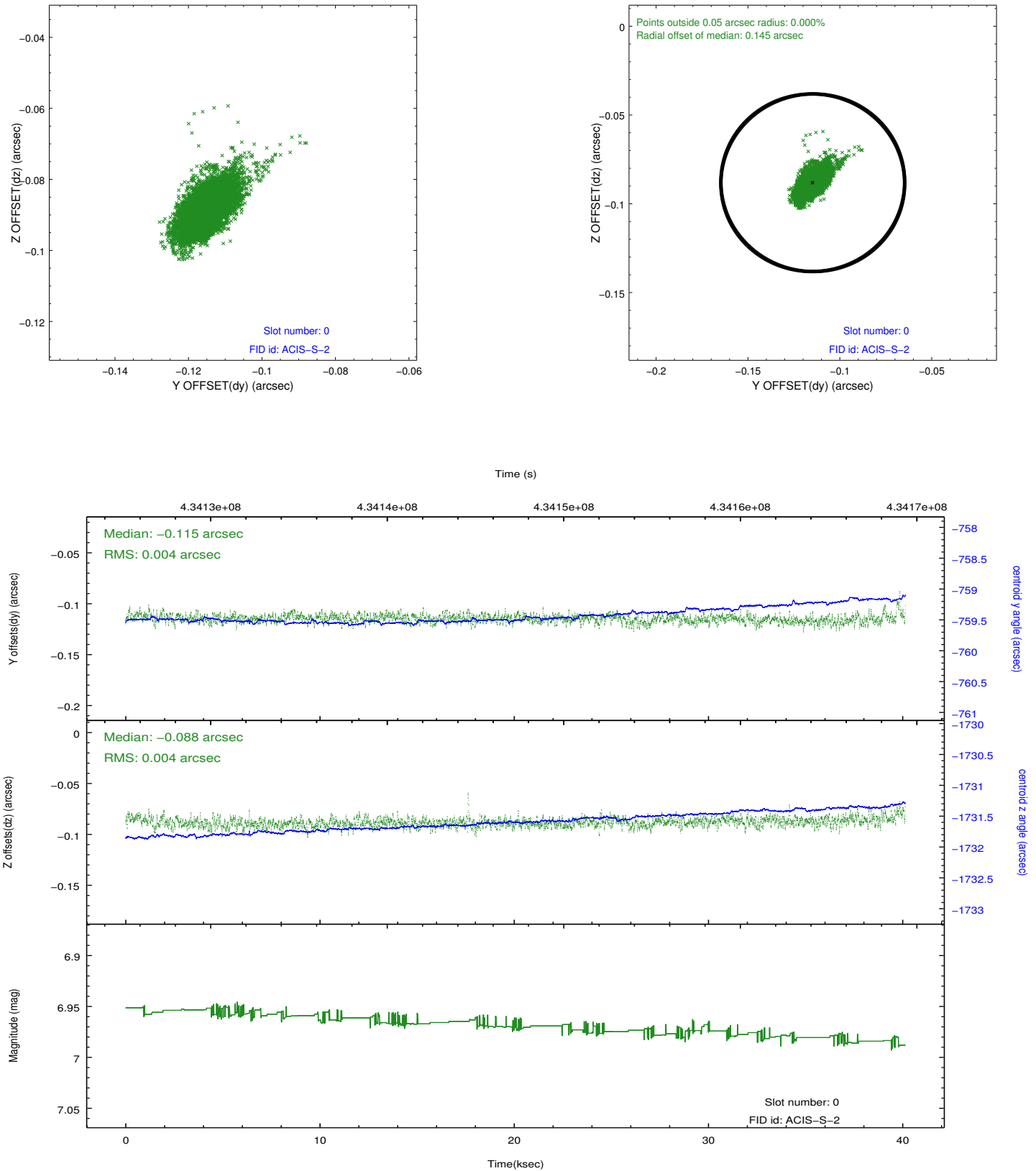


2.4.5 Slot 7

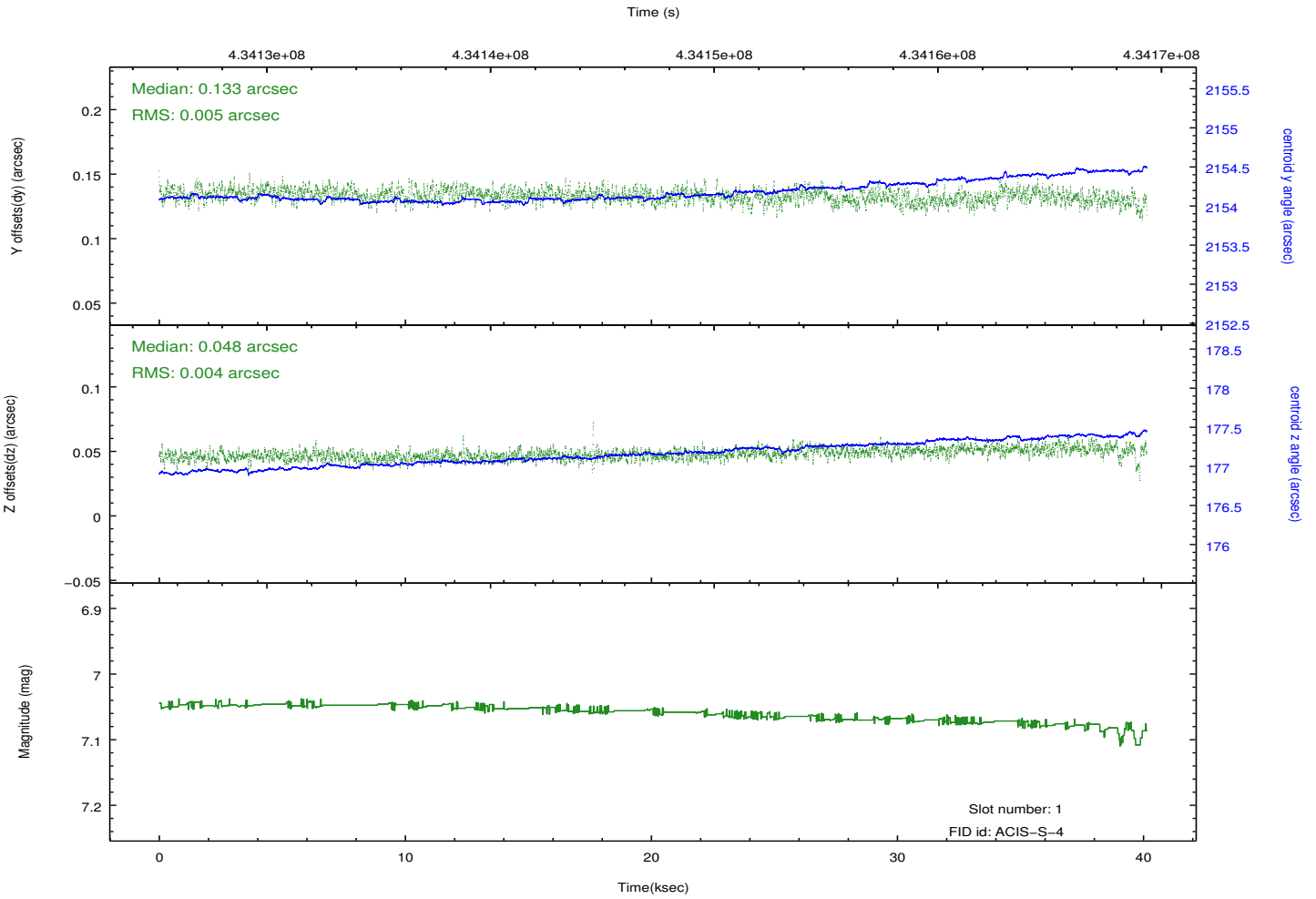
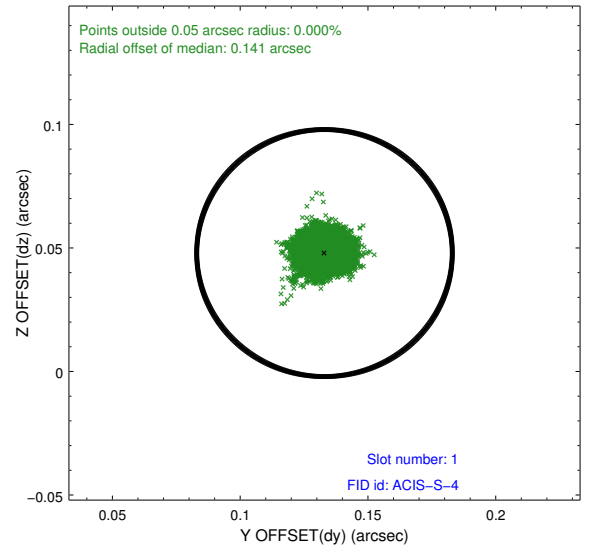
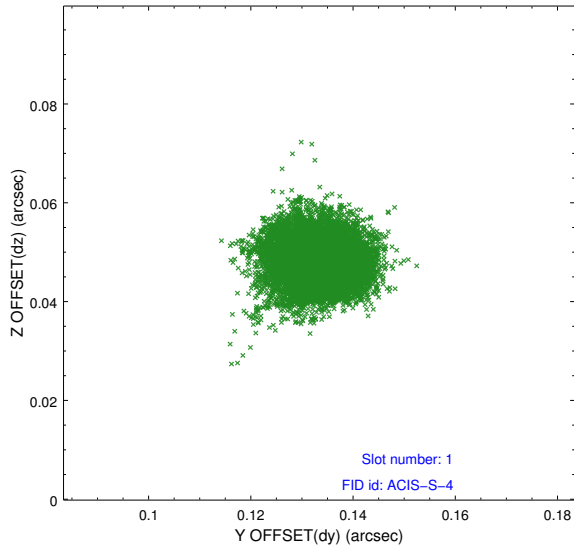


2.5 FID Slots

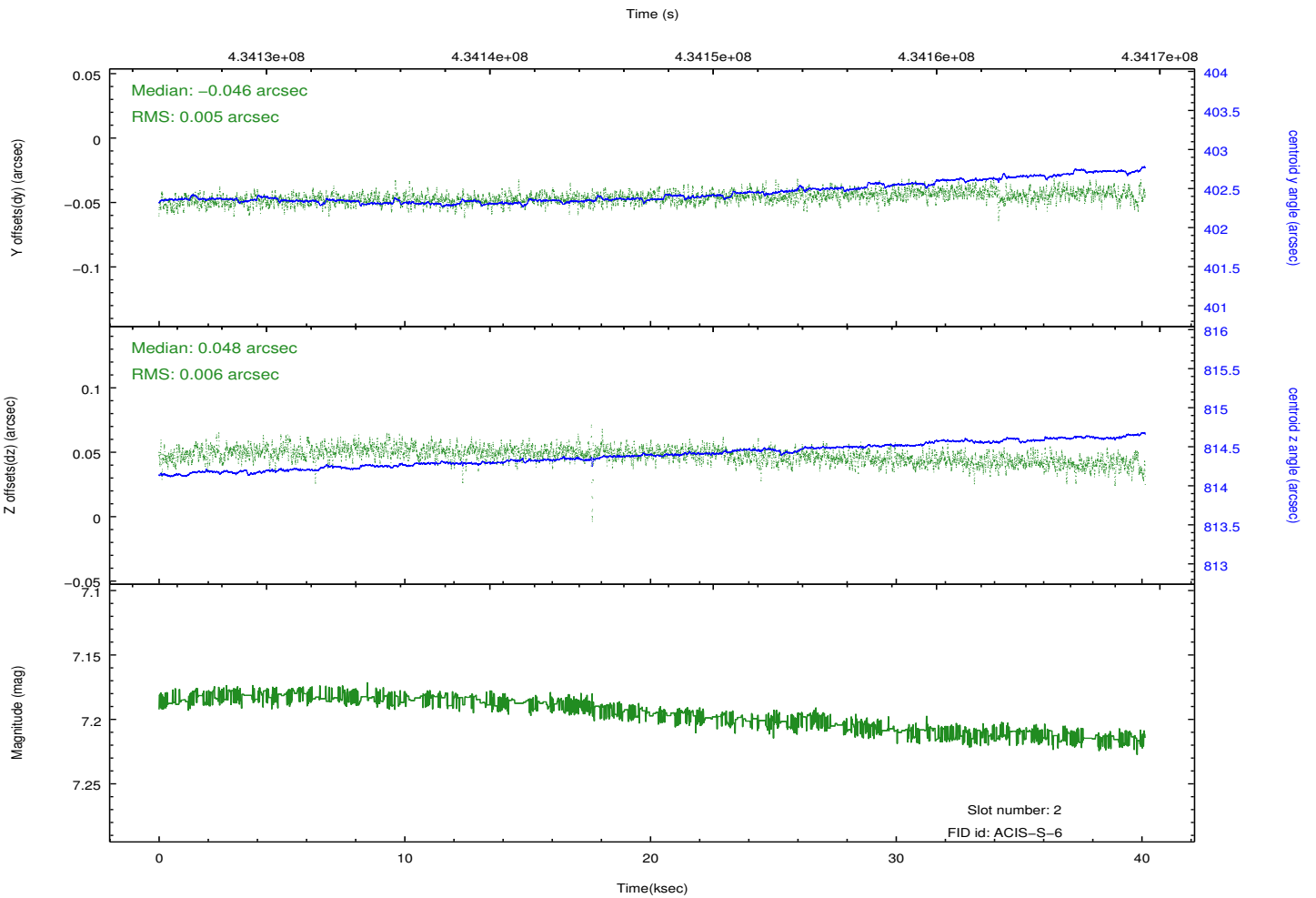
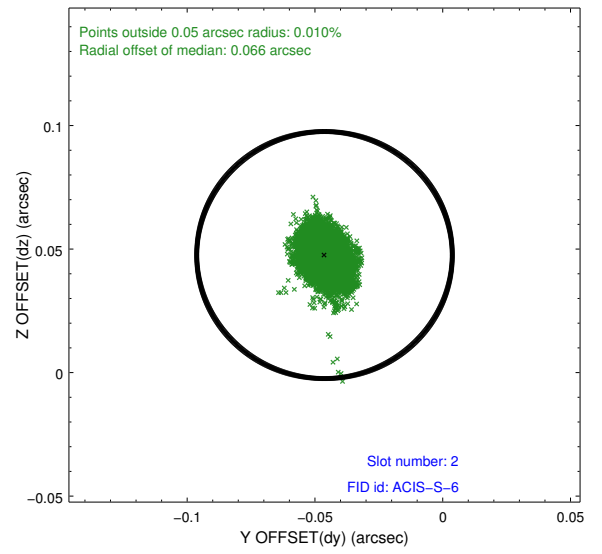
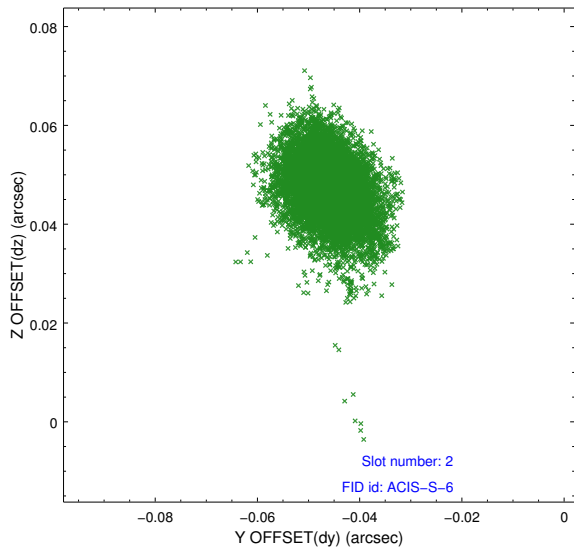
2.5.1 Slot 0



2.5.2 Slot 1



2.5.3 Slot 2



A Summary

A.1 Status

V&V Scientist	Jen Lauer
V&V Date (YYYY-MM-DD)	2012.02.24
V&V Edition	1
V&V Disposition and Status	OK
V&V Charge Time	40.129418258011

A.2 Comments