

V&V Reference Report

L2 ASCDS Version : 8.1.2

Observation 1236 - L2 Version 3
Chandra X-Ray Center

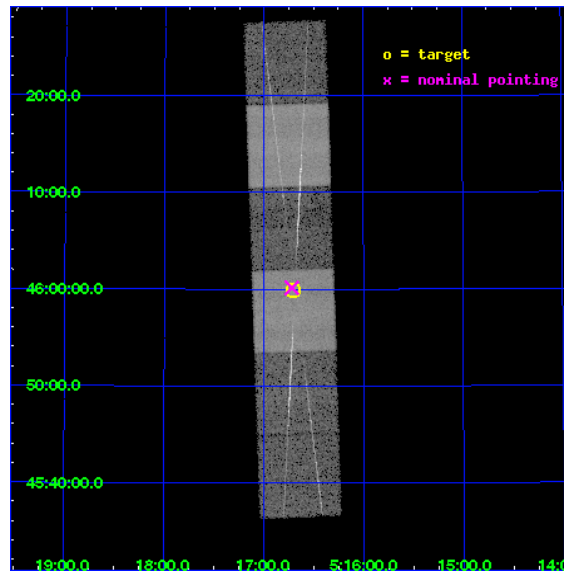
L2 Processing Date : Dec 17 2009

Contents

1	Front	2
2	OBI	3
2.1	OBI	3
2.1.1	Images	3
2.1.2	Bias	3
2.1.3	Parameters	4
2.1.4	Events	4
2.2	Compared Parameters	5
2.3	Aspect	6
2.4	Star Slots	9
2.4.1	Slot 3	9
2.4.2	Slot 4	10
2.4.3	Slot 5	11
2.4.4	Slot 6	12
2.4.5	Slot 7	13
2.5	FID Slots	14
2.5.1	Slot 0	14
2.5.2	Slot 1	15
2.5.3	Slot 2	16
3	Gratings	17
3.1	HEG Arm	17
3.2	MEG Arm	19
A	Summary	21
A.1	Status	21
A.2	Comments	21

1 Front

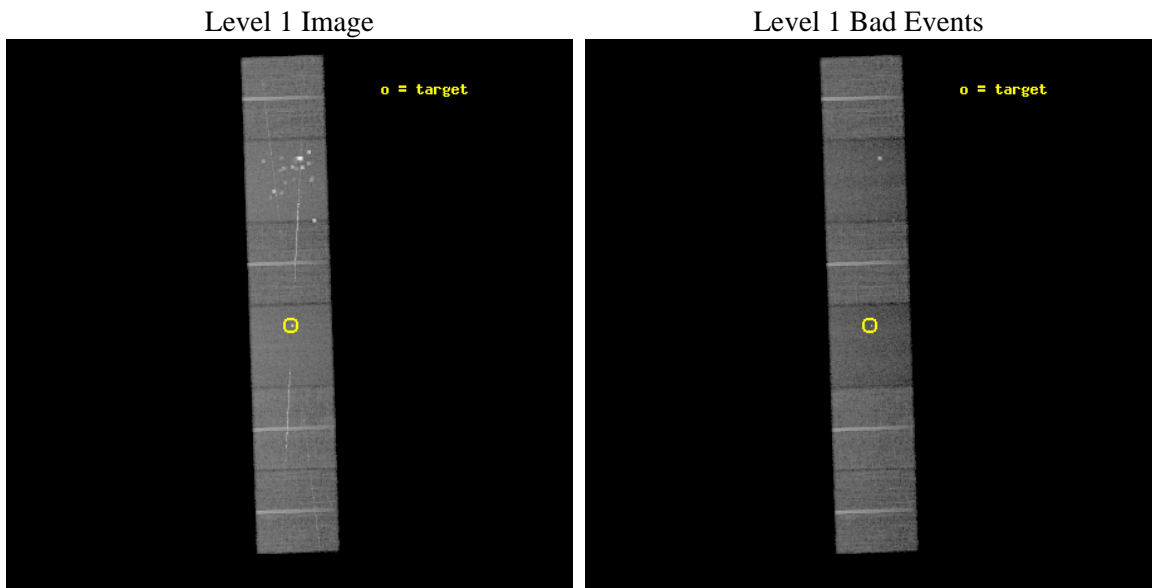
seq_num	280186	Sequence number
obs_id	1236	Observation id
title	 	Proposal title
observer	Dr. CXC Calibration	Principal investigator
object	CAPELLA	Source name
dtcycle	0	
cycle	P	events from which exps? Prim/Second/Both
ra_targ	79.17625	Observer's specified target RA
dec_targ	45.997889	Observer's specified target Dec
ra_nom	79.179640112914	Nominal RA
dec_nom	46.002592063919	Nominal Dec
roll_nom	88.104256977393	Nominal Roll
revision	3	Processing version of data
ontime	14757.246451758	Sum of GTIs [s]
livetime	14570.381311439	Livetime [s]
ontime4	14757.164401688	Sum of GTIs [s]
ontime5	14757.205441684	Sum of GTIs [s]
ontime6	14757.041281685	Sum of GTIs [s]
ontime7	14757.246451758	Sum of GTIs [s]
ontime8	14757.123361684	Sum of GTIs [s]
ontime9	14757.082321689	Sum of GTIs [s]
l2events	216418	Number of level 2 events



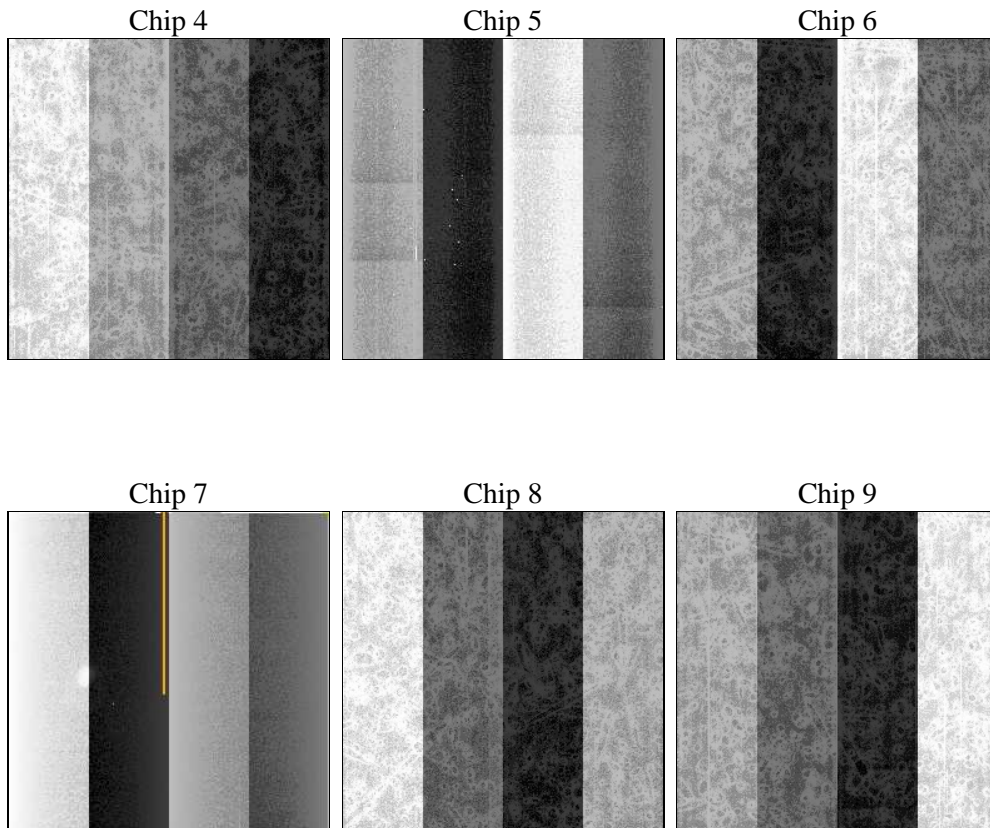
2 OBI

2.1 OBI

2.1.1 Images



2.1.2 Bias



2.1.3 Parameters

obi_num	1	Obi number	sched_exp_time	15000.000000	Scheduled observation exposure time
ascdsver	8.1.2	ASCDS version number	ontime	14757.246451758	Sum of GTIs [s]
caldbver	4.1.4	 	ontime4	14757.164401688	Sum of GTIs [s]
date	2009-12-17T11:46:50	Date and time of file creation	ontime5	14757.205441684	Sum of GTIs [s]
revision	3	Processing version of data	ontime6	14757.041281685	Sum of GTIs [s]
			ontime7	14757.246451758	Sum of GTIs [s]
			ontime8	14757.123361684	Sum of GTIs [s]
			ontime9	14757.082321689	Sum of GTIs [s]
			l1events	1061475	Number of level 1 events

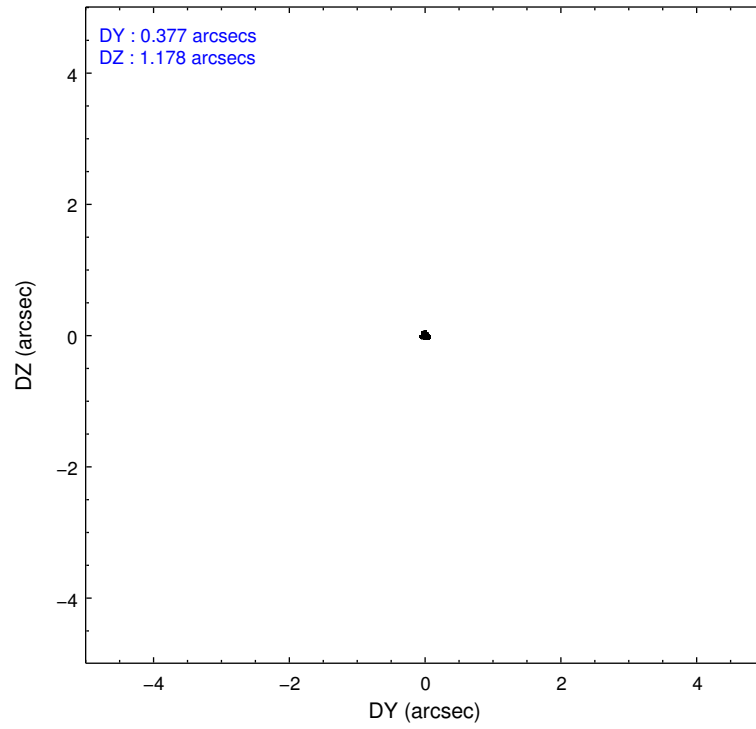
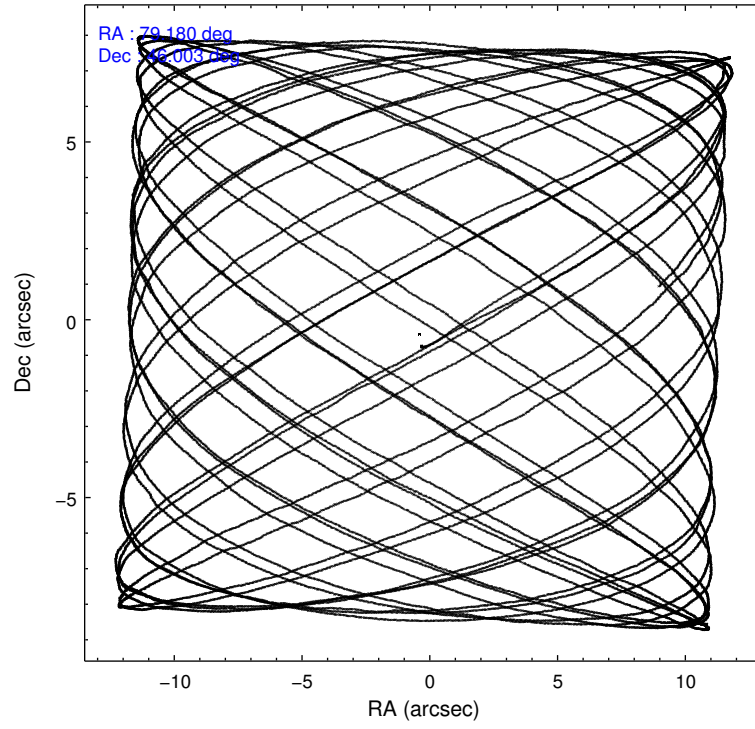
2.1.4 Events

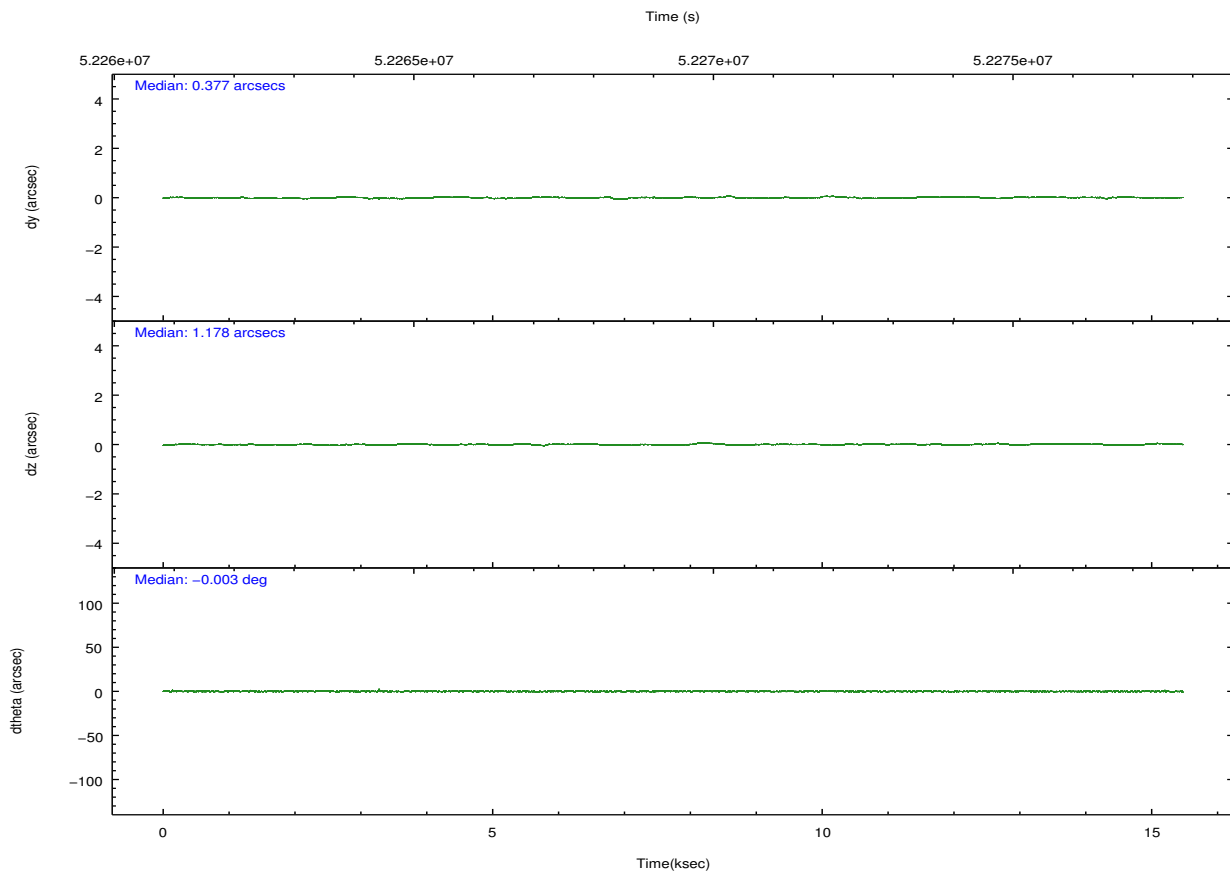
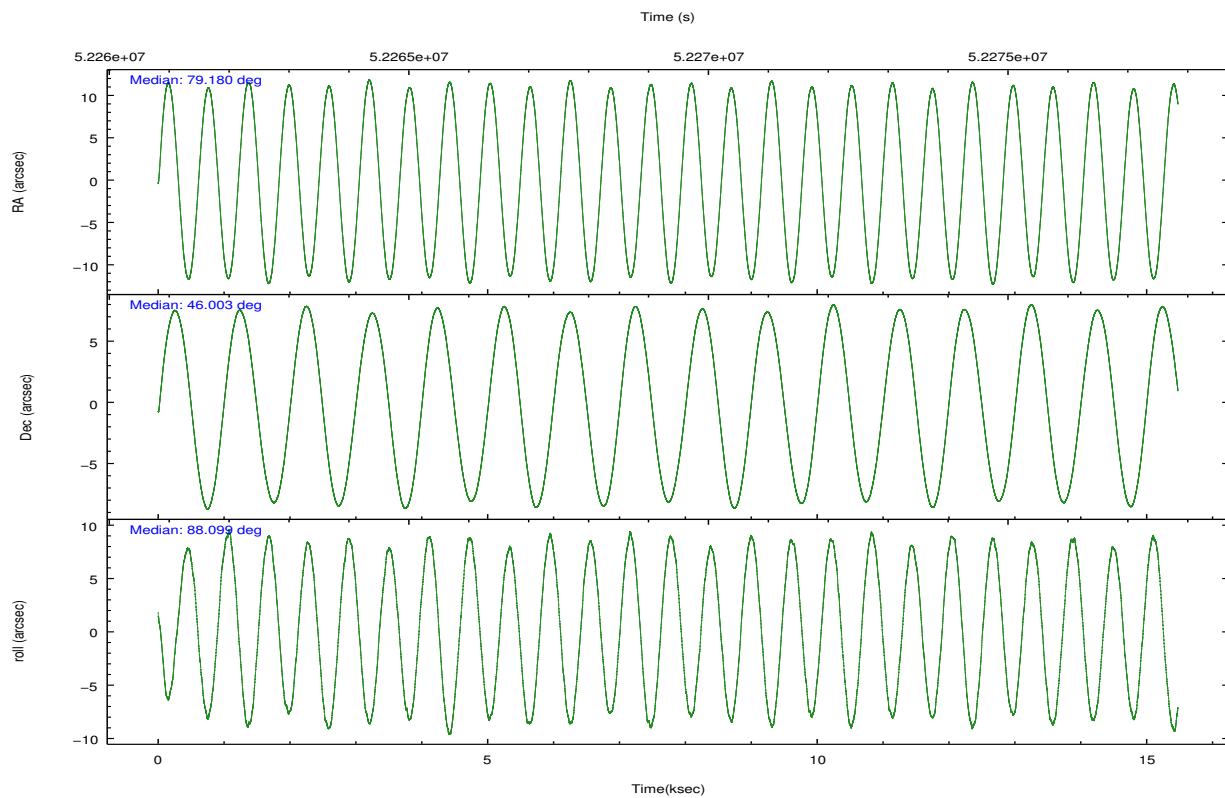
	ccd 4	ccd 5	ccd 6	ccd 7	ccd 8	ccd 9		ccd 4	ccd 5	ccd 6	ccd 7	ccd 8	ccd 9
level 1 events	161346	231896	160311	163267	193002	151653	grade 0 events	5699	44233	10939	5295	16787	6263
rejected events	145951	100082	138193	95975	154919	135163		3%	19%	6%	3%	8%	4%
rejected %	90%	43%	86%	58%	80%	89%	grade 1 events	48	994	78	188	129	46
								0%	0%	0%	0%	0%	0%
							grade 2 events	4670	26737	5162	11088	9354	4457
								2%	11%	3%	6%	4%	2%
							grade 3 events	1124	7038	1375	6945	2464	1222
								0%	3%	0%	4%	1%	0%
							grade 4 events	1116	6599	1301	5724	2270	1196
								0%	2%	0%	3%	1%	0%
							grade 5 events	2895	8550	3714	10894	4766	3929
								1%	3%	2%	6%	2%	2%
							grade 6 events	2790	47264	3350	38270	7241	3358
								1%	20%	2%	23%	3%	2%
							grade 7 events	143004	90481	134392	84863	149991	131182
								88%	39%	83%	51%	77%	86%

2.2 Compared Parameters

Parameter	Planned	Actual	Parameter	Planned	Actual
Instrument	ACIS	ACIS	Obspar format version number	6	6
Detector	ACIS-456789	ACIS-456789	Obspar file type	PREDICTED	ACTUAL
Grating	HETG	HETG	Obspar update status	NONE	UPDATED
Data mode	FAINT	FAINT	Number of optional ACIS chips dropped	0	0
Observation mode	POINTING	POINTING	On-chip summing requested	N	N
Pointing RA	79.197788	79.1796401129141	Subarray requested	NONE	NONE
Pointing Dec	45.978008	46.00259206391875	Alternating exposures requested	N	N
Pointing Roll	87.934574	88.10425697739301	Primary exposure time	0.000000	3.2
SIM focus pos (mm)	-0.884267	-0.9302499541415544			
SIM defocus (mm)	-0.2	-0.2459824928416582			
SIM translation stage pos (mm)	-190.132523	-190.1425803651734			
SIM translation stage offset (mm)	0	0.01005778216563158			
Observation start time	52262064.184000	52261397.340133			
Observation start date	1999-08-28T21:13:20	1999-08-28T21:03:17			
Observation end time	52277064.184000	52277197.203201			
Observation end date	1999-08-29T01:23:20	1999-08-29T01:26:37			
Read mode	TIMED	TIMED			

2.3 Aspect



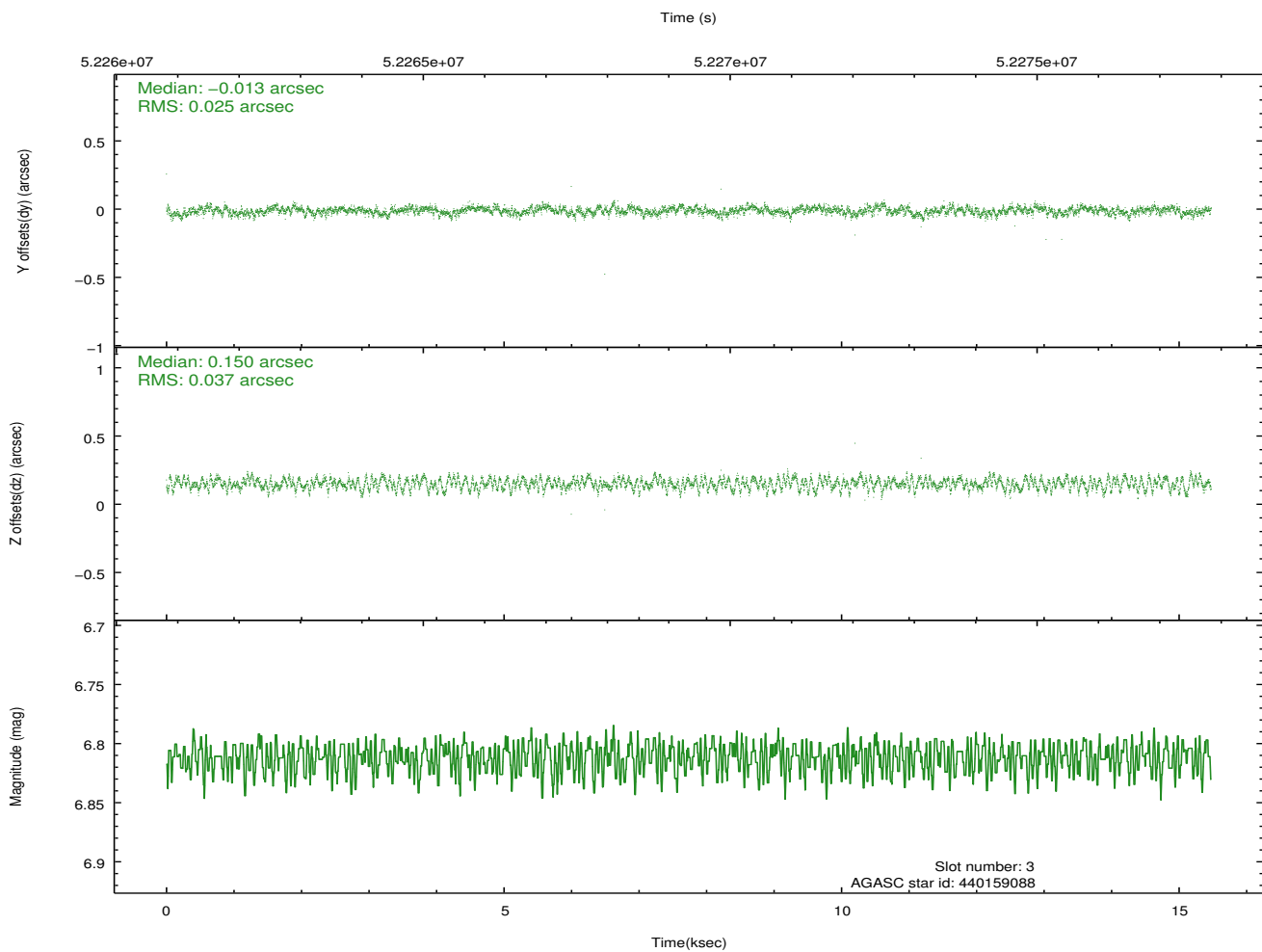
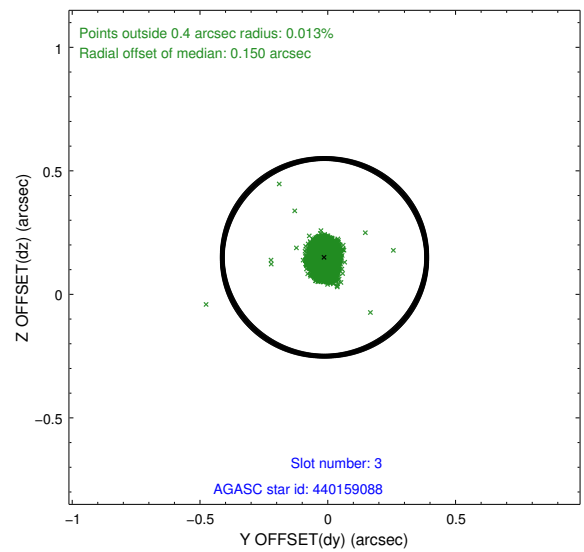
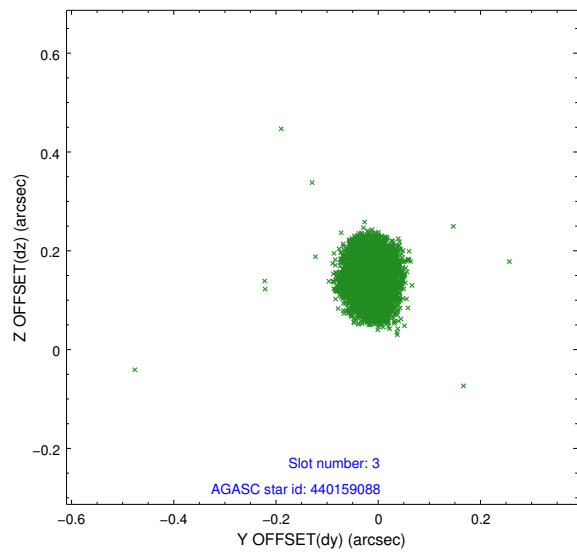


Slot Statistics

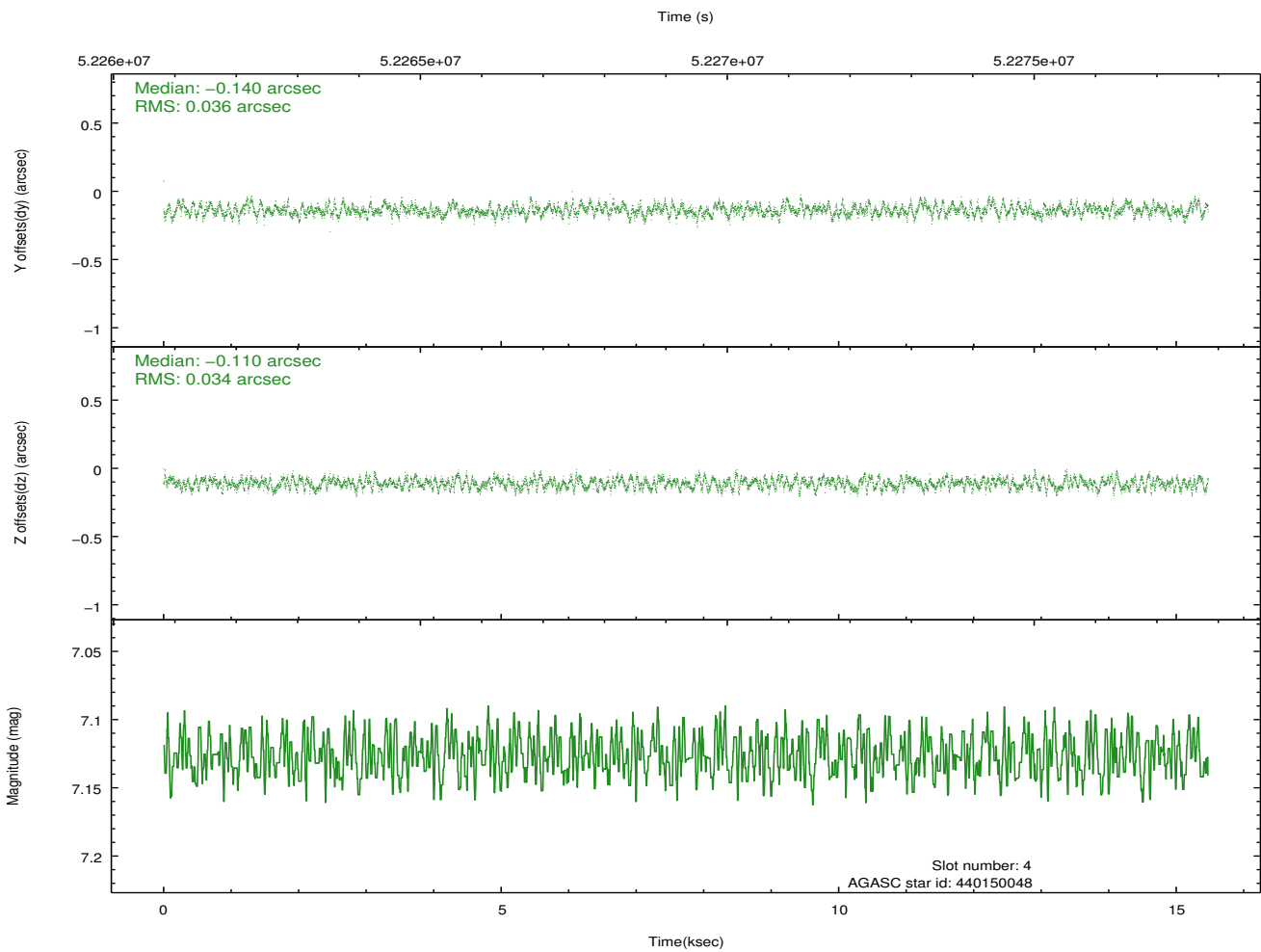
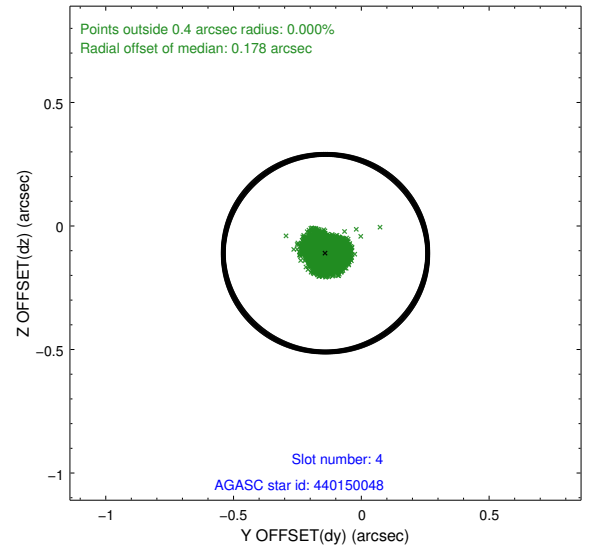
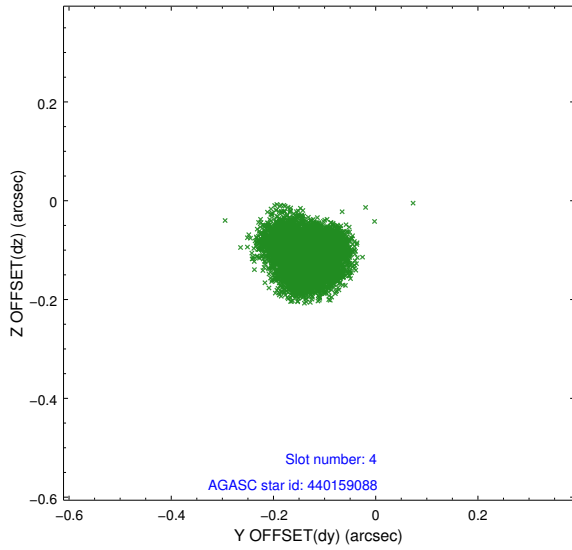
slot	status	id	mag	n_pts	med_dy	med_dz	dr1	dr2	ra	dec	mean_y	mean_z
0	FID	ACIS-S-2	7.12	7550	-0.018	0.003	0.006	0.011	0.000000	0.000000	-752.98	-1722.07
1	FID	ACIS-S-4	7.22	7550	0.080	0.008	0.006	0.011	0.000000	0.000000	2160.33	186.25
2	FID	ACIS-S-5	7.25	7550	-0.092	-0.002	0.007	0.011	0.000000	0.000000	-1805.75	180.06
3	GUIDE	440159088	6.81	7550	-0.013	0.150	0.048	0.076	79.453034	46.128063	563.17	-616.58
4	GUIDE	440150048	7.13	7549	-0.140	-0.110	0.054	0.083	79.112838	46.416060	1567.70	267.63
5	GUIDE	440149808	8.47	7547	-0.056	-0.007	0.056	0.091	78.873930	46.405955	1511.66	859.31
6	GUIDE	438460832	8.98	7549	0.100	-0.217	0.098	0.153	78.414614	45.554782	-1584.69	1918.32
7	GUIDE	440145944	9.09	7544	0.104	0.188	0.087	0.131	80.083717	45.428844	-1883.32	-2307.24

2.4 Star Slots

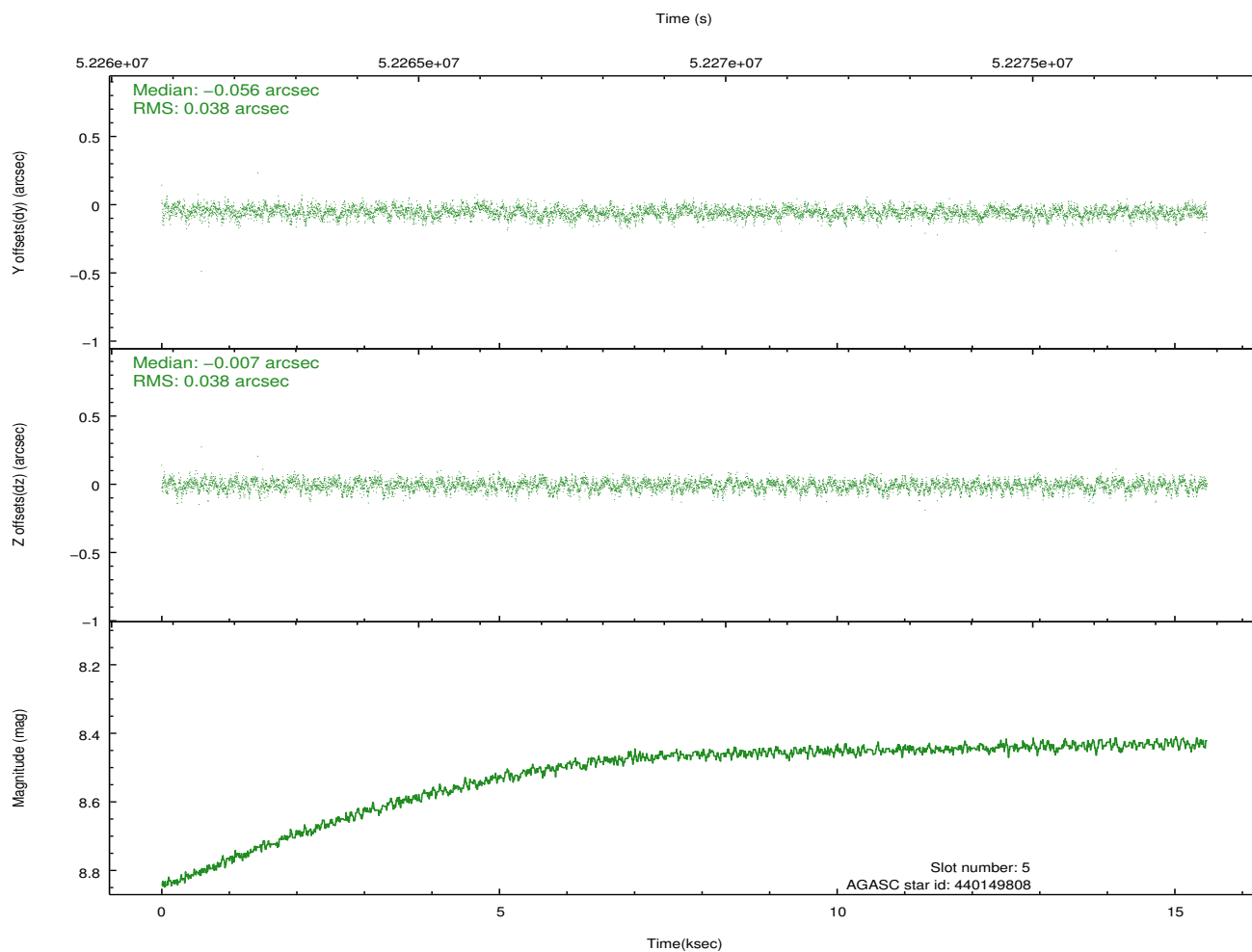
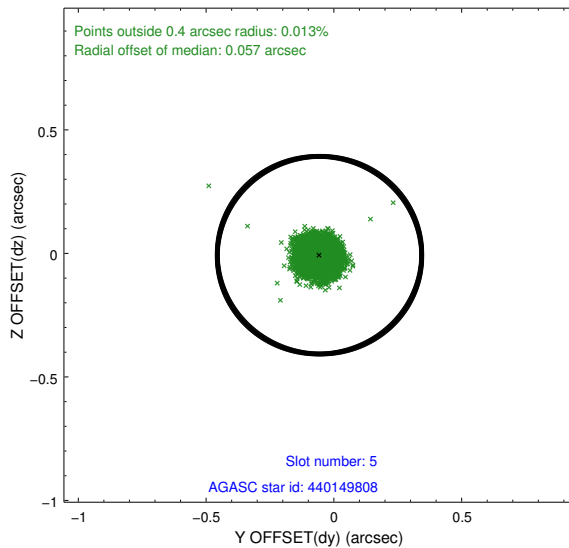
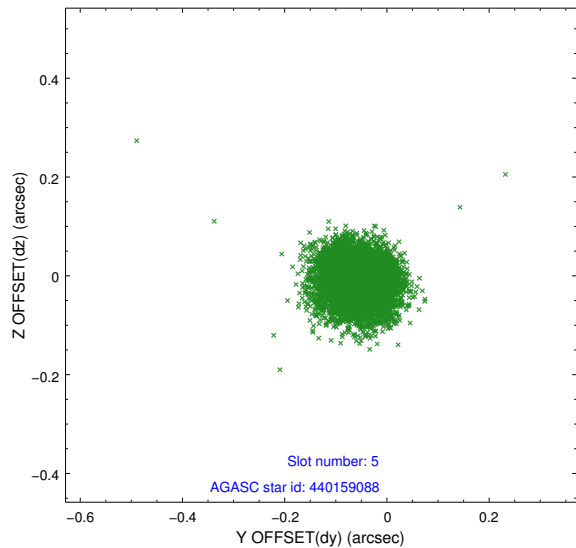
2.4.1 Slot 3



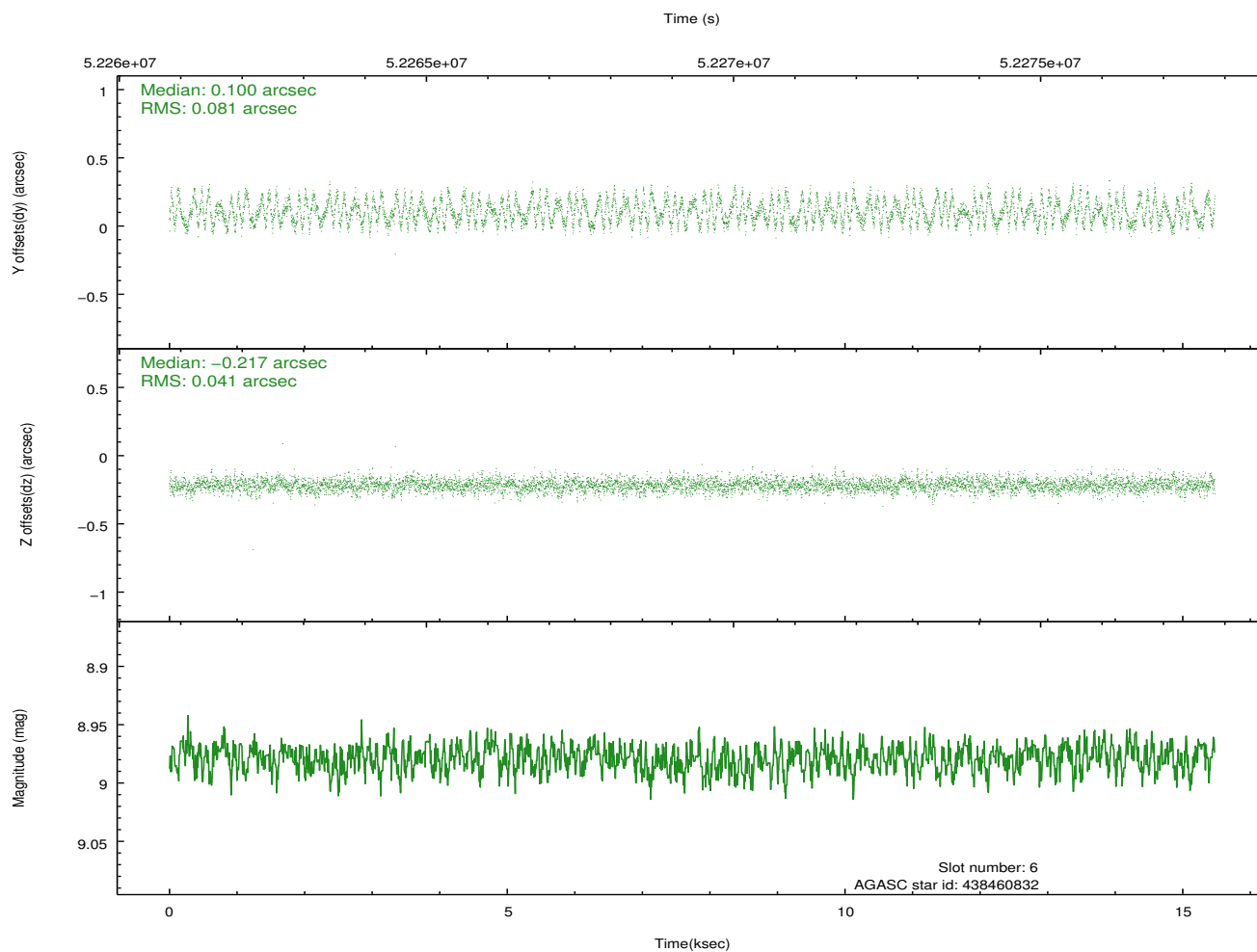
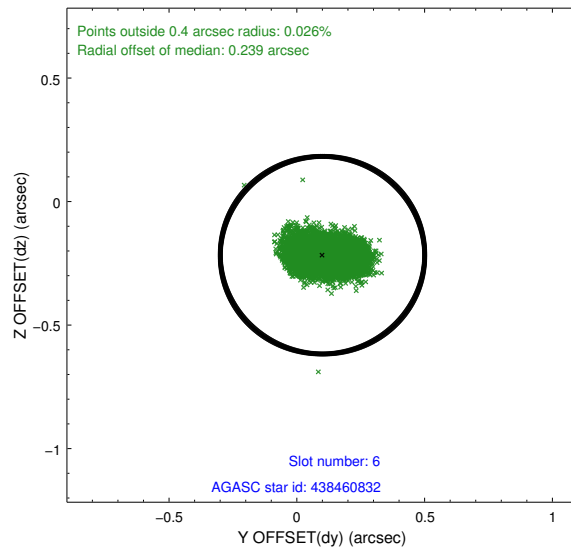
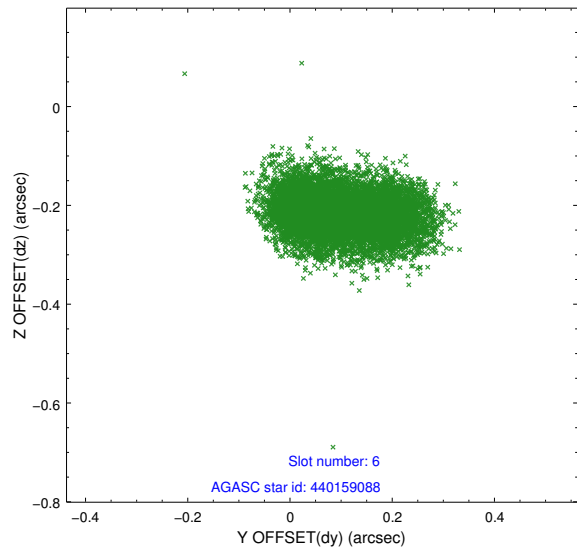
2.4.2 Slot 4



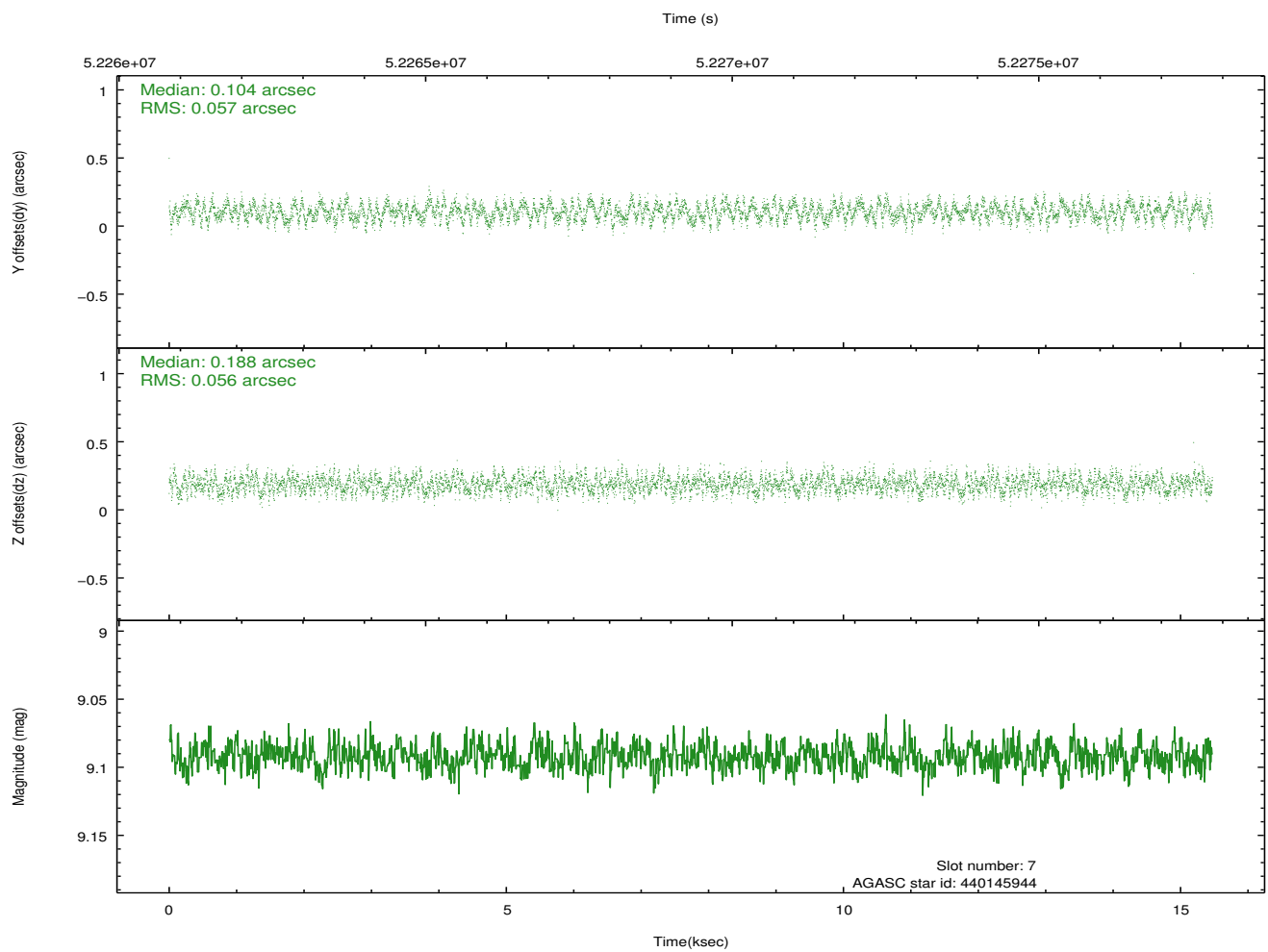
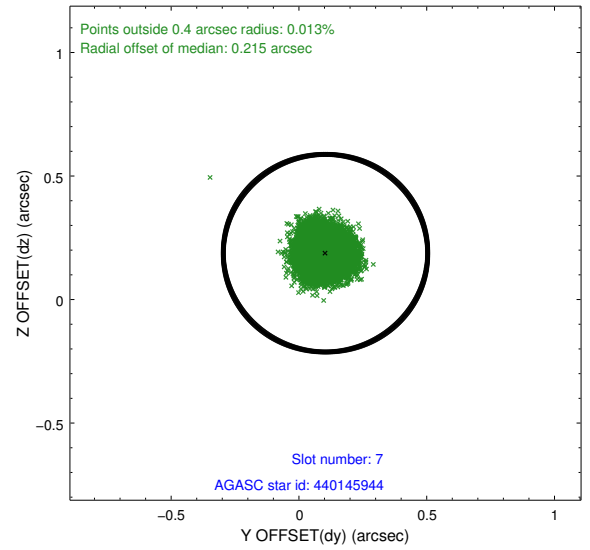
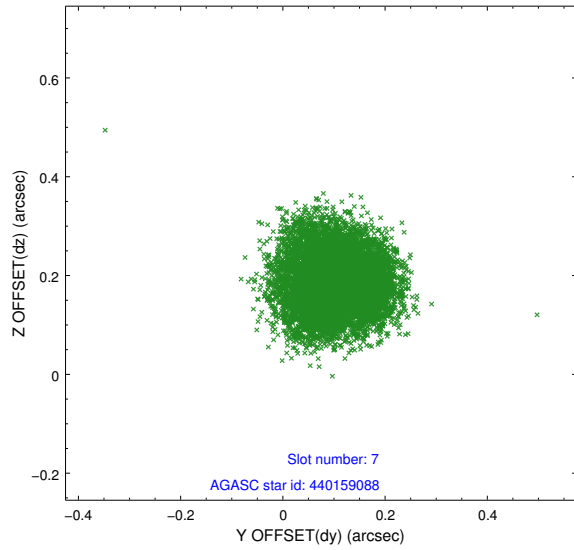
2.4.3 Slot 5



2.4.4 Slot 6

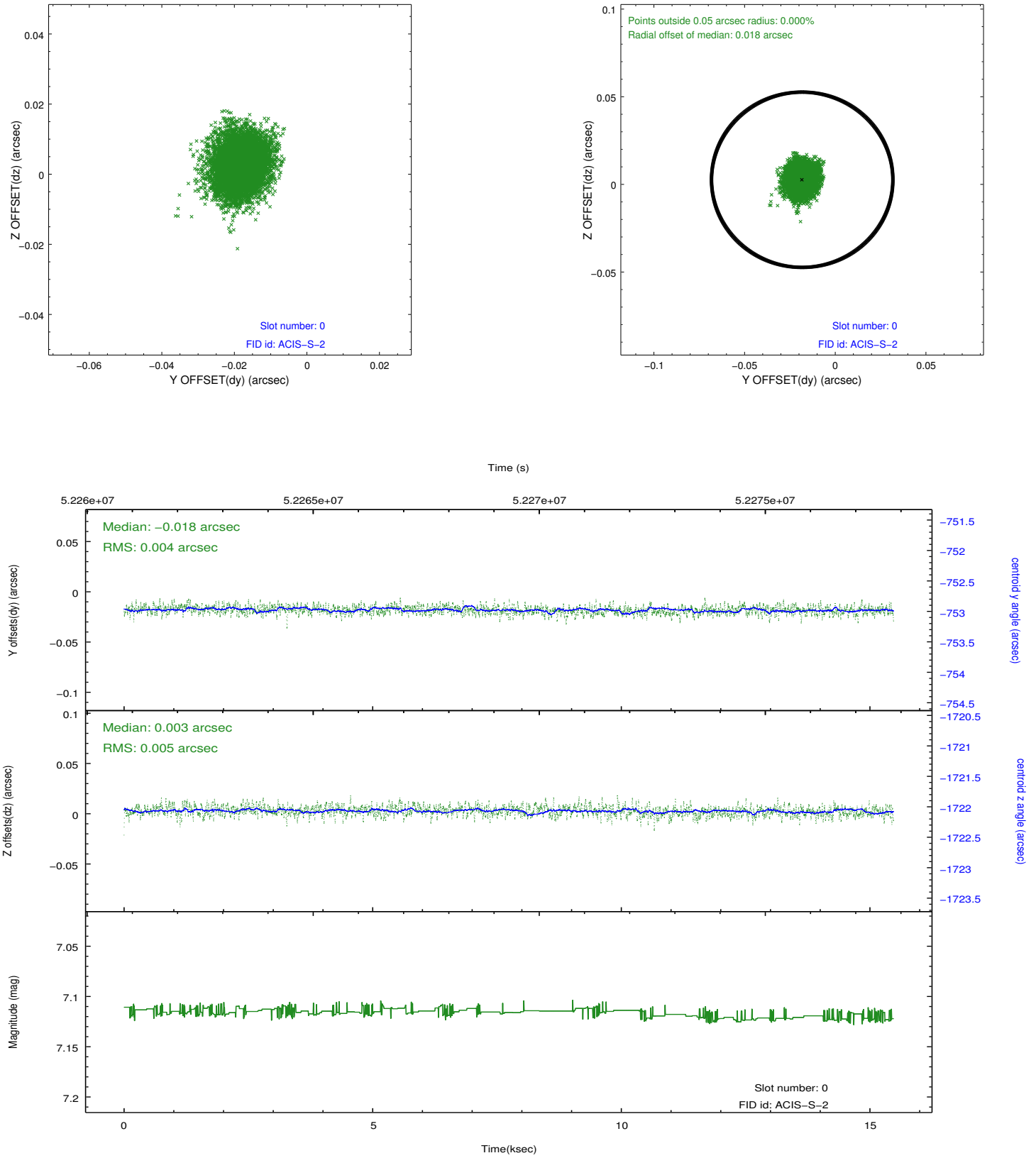


2.4.5 Slot 7

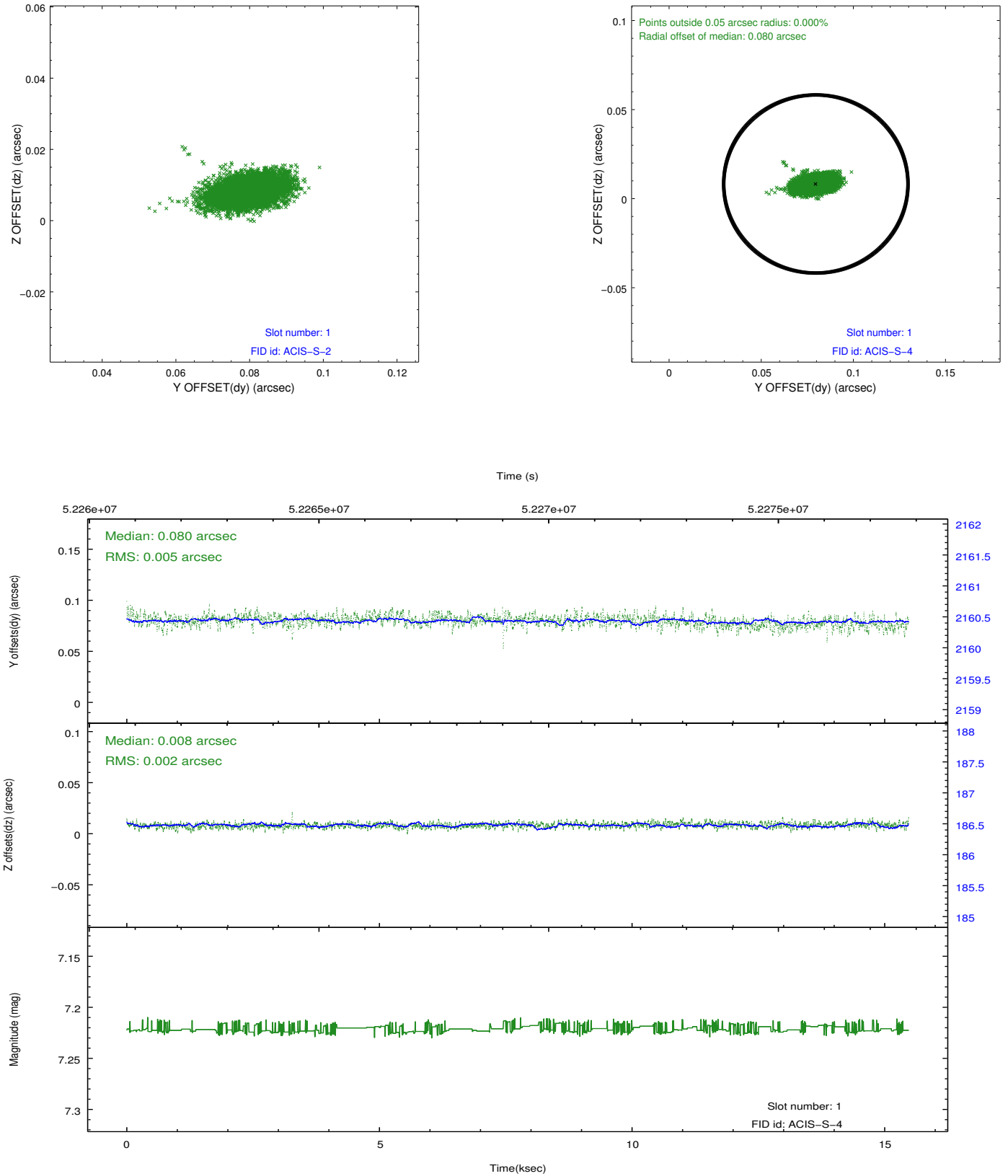


2.5 FID Slots

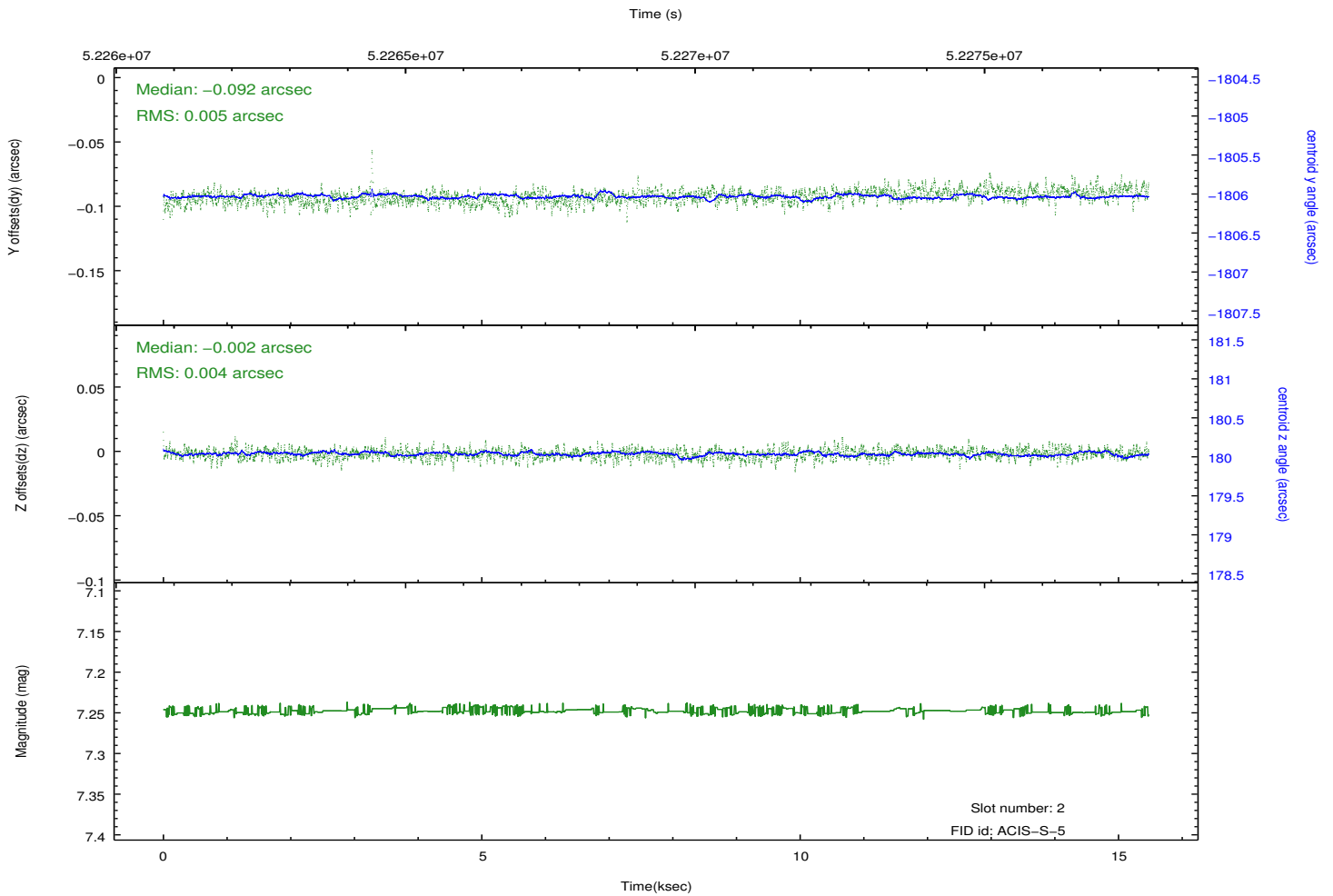
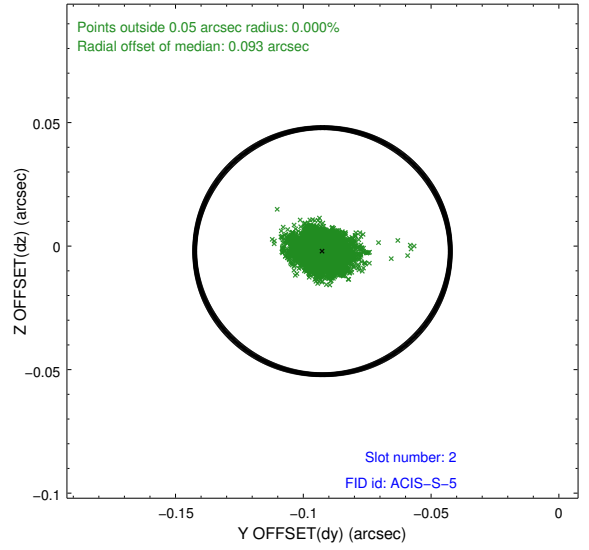
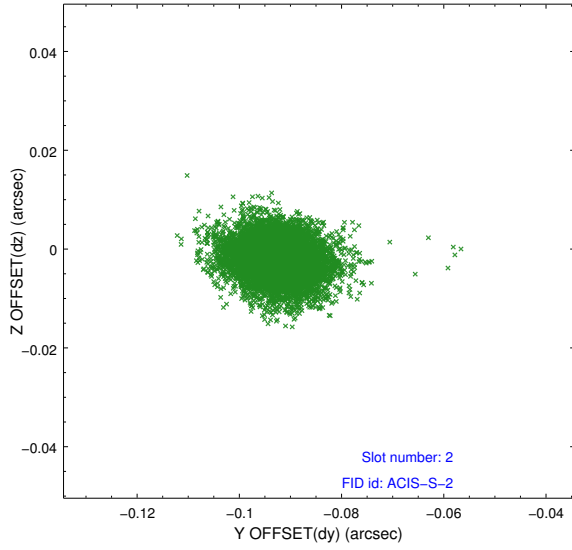
2.5.1 Slot 0



2.5.2 Slot 1

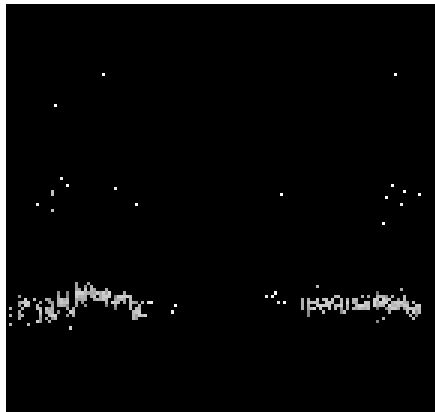


2.5.3 Slot 2

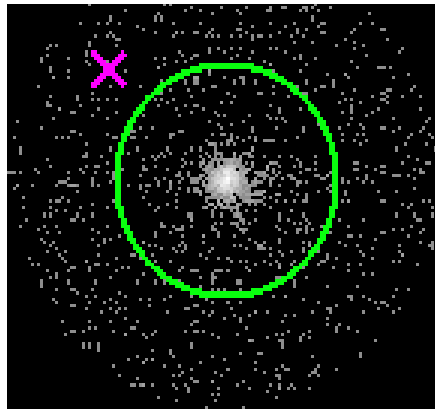


3 Gratings

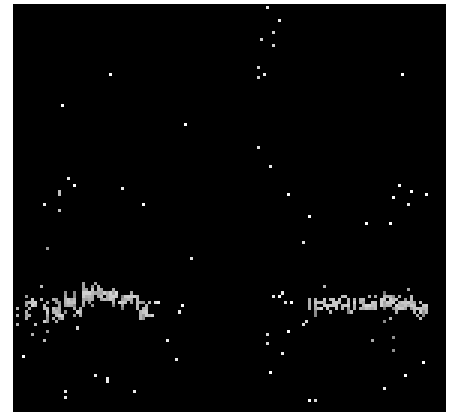
3.1 HEG Arm



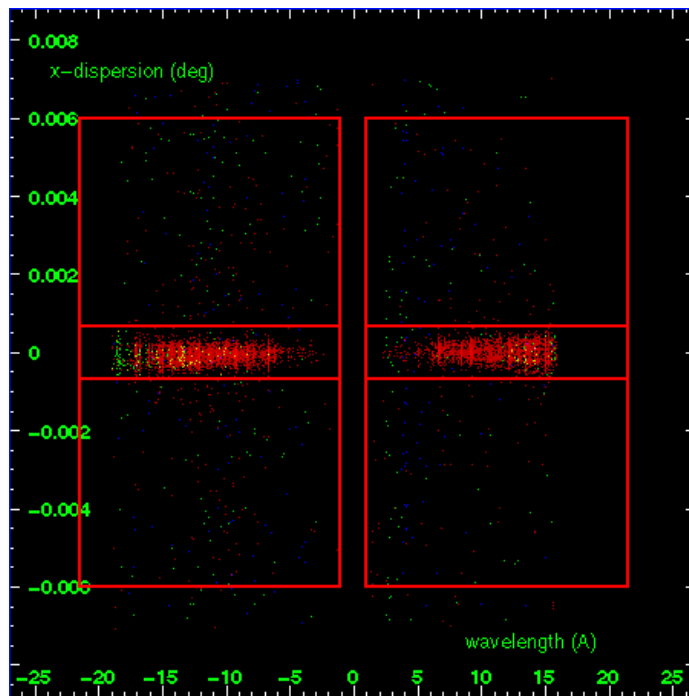
HEG Order Sort 123



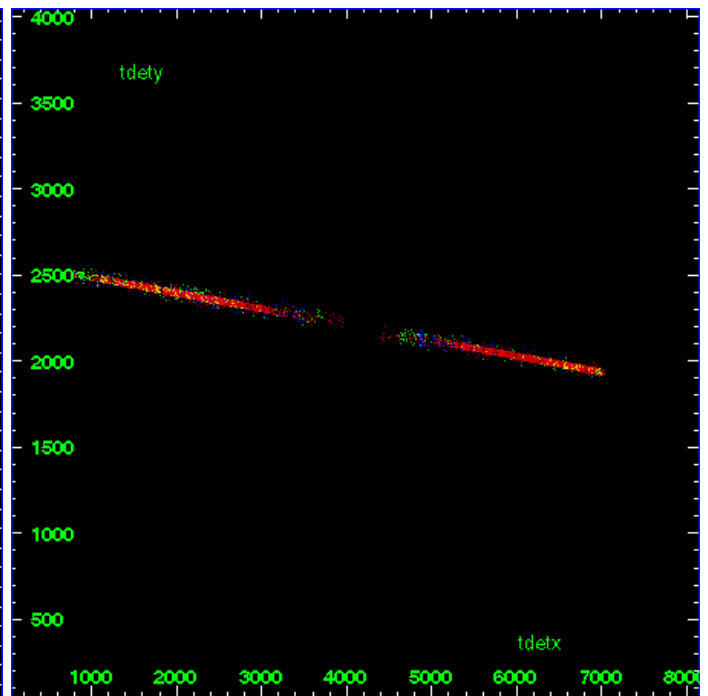
HEG Zero Order



HEG Order Sort ALL

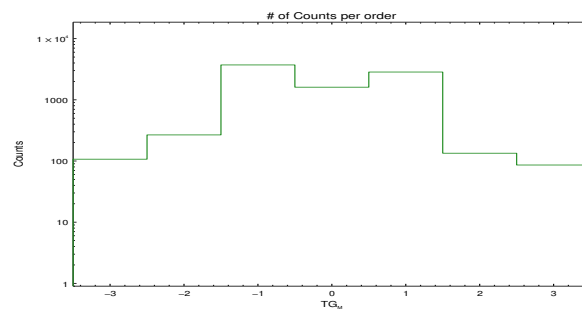


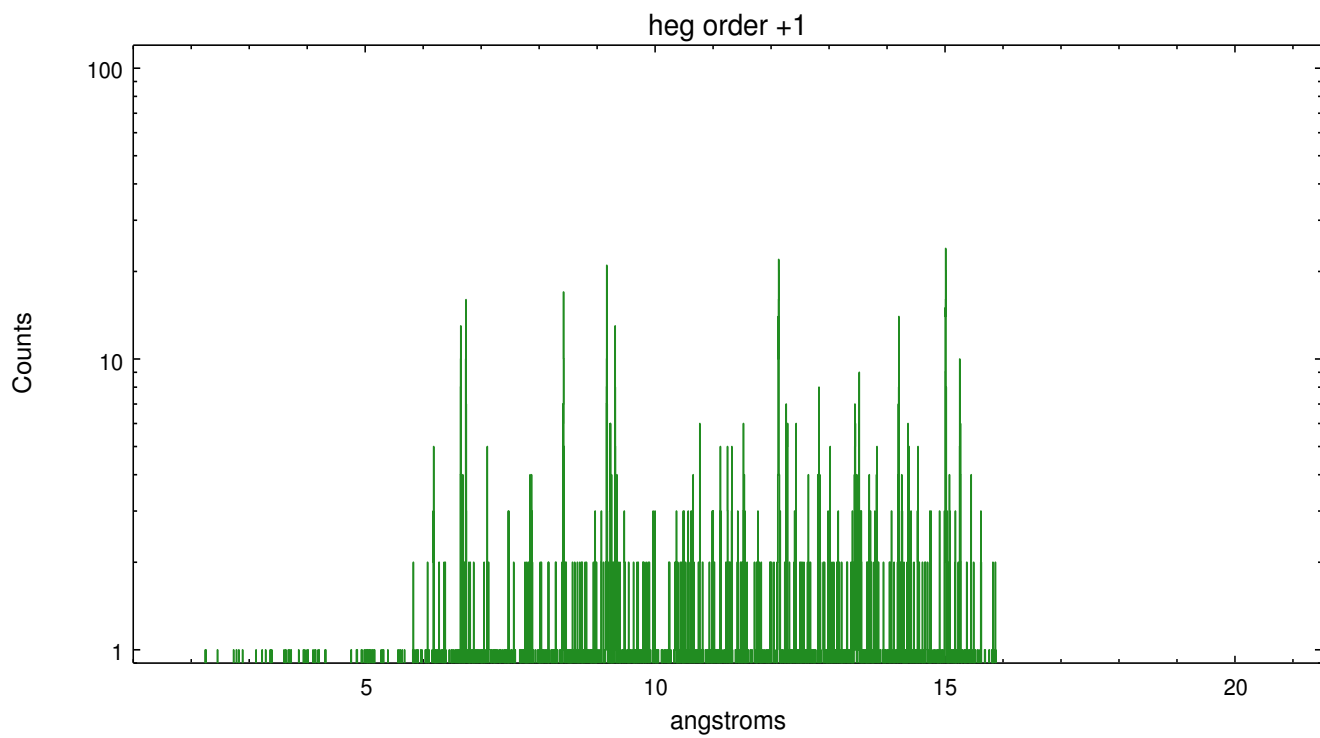
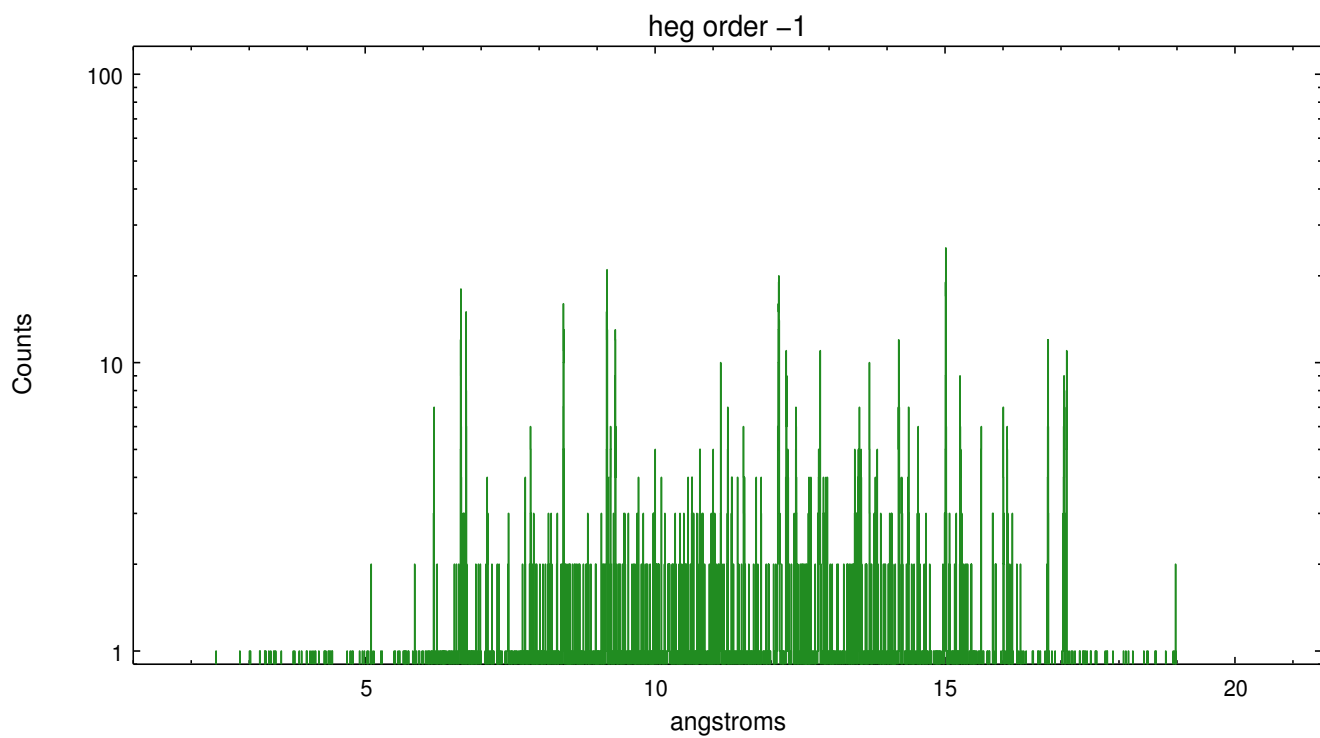
Spot Image HEG



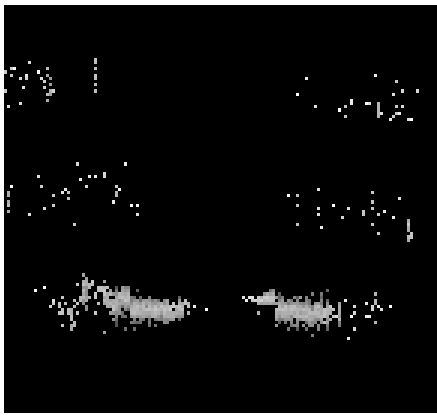
Full Detector HEG

	order	order	order	order	order	order	order
	-3	-2	-1	0	1	2	3
Events	107	267	3718	1608	2846	134	86

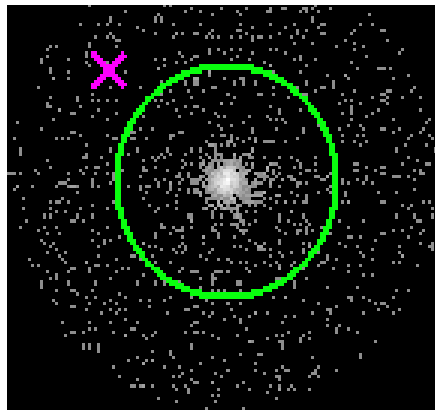




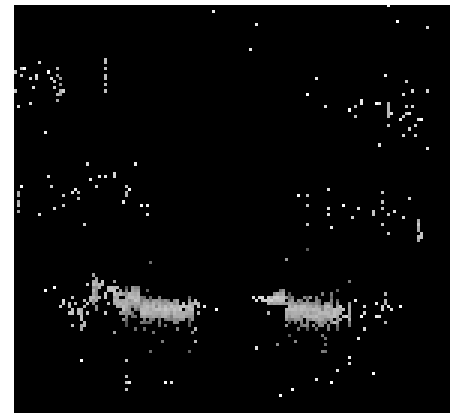
3.2 MEG Arm



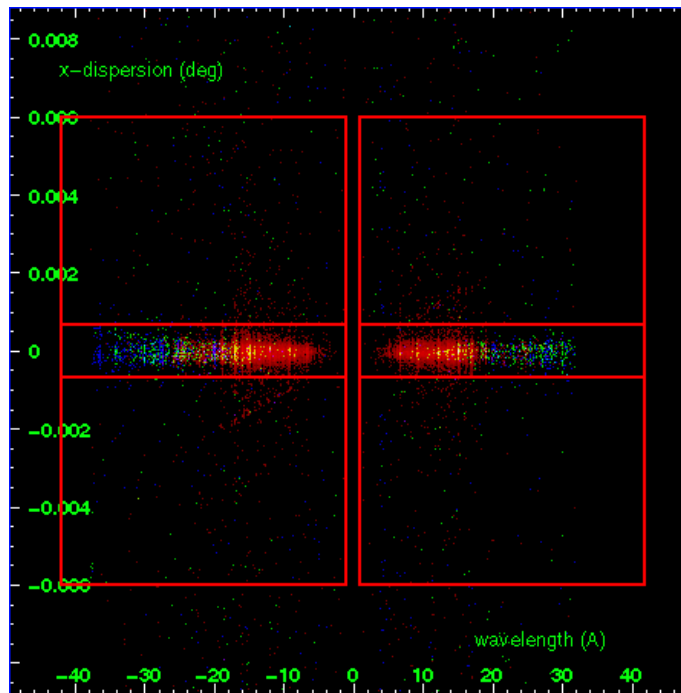
MEG Order Sort 123



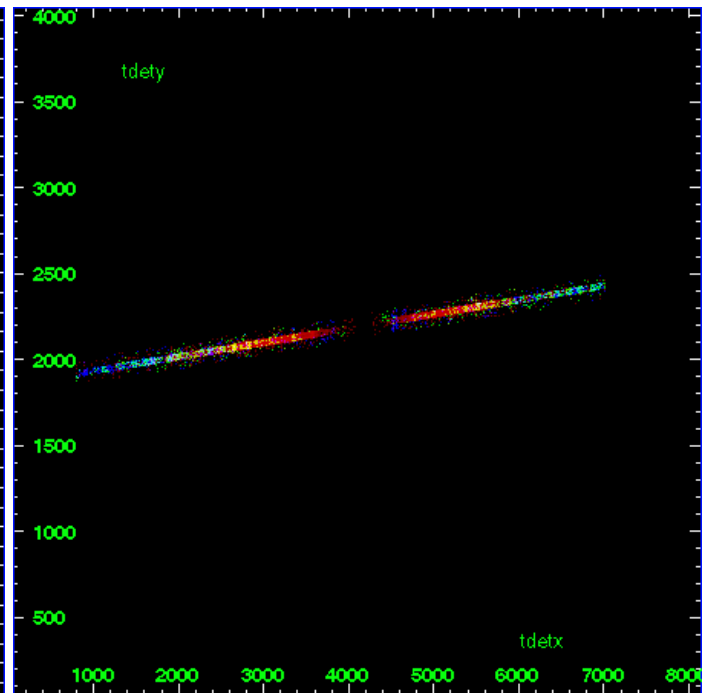
MEG Zero Order



MEG Order Sort ALL

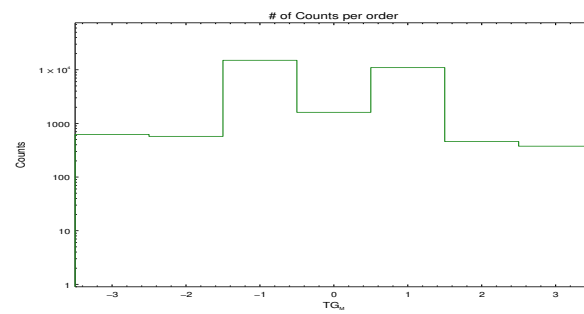


Spot Image MEG

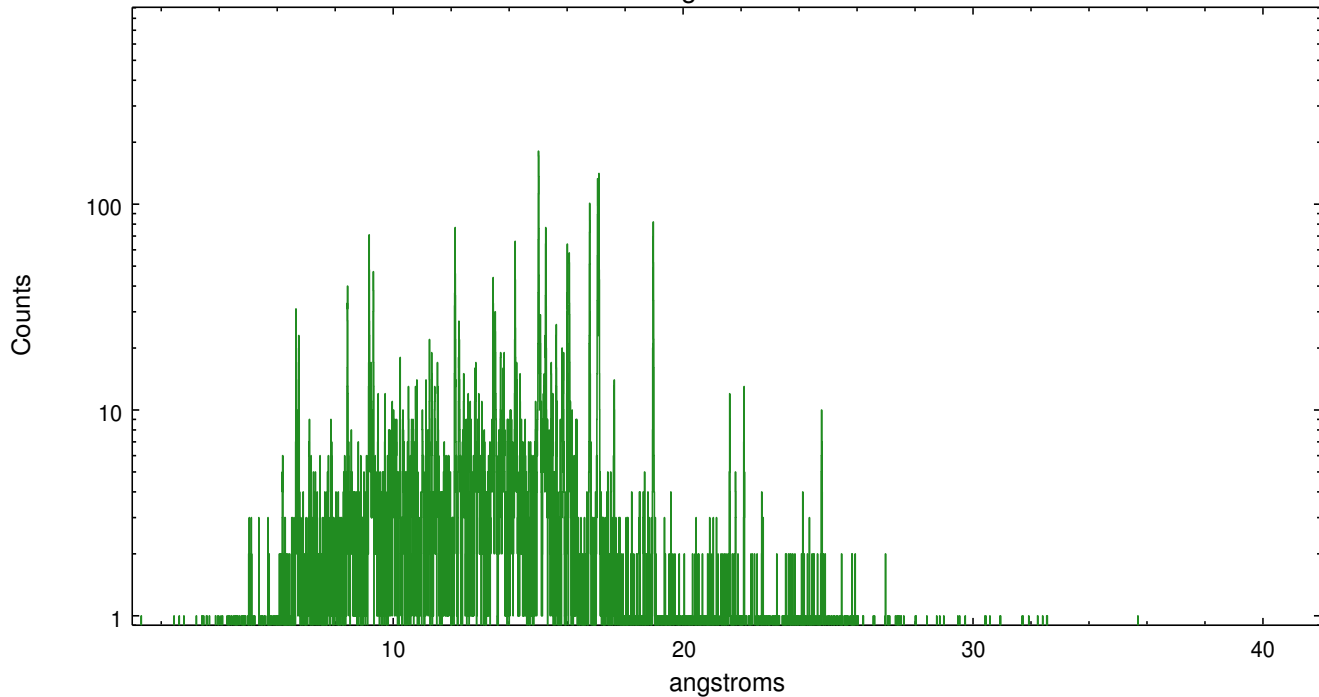


Full Detector MEG

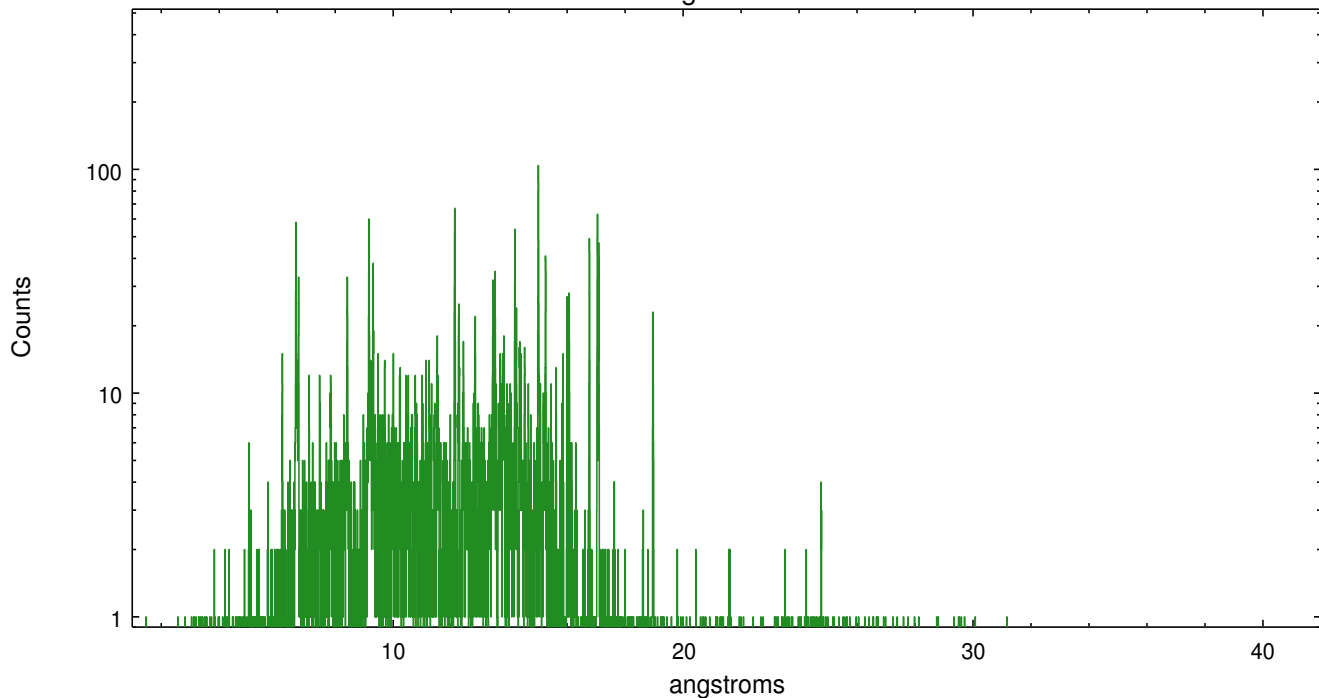
	order -3	order -2	order -1	order 0	order 1	order 2	order 3
Events	622	573	15007	1608	10965	459	376



meg order -1



meg order +1



A Summary

A.1 Status

V&V Scientist	David Huenemoerder
V&V Date (YYYY-MM-DD)	2010.03.26
V&V Edition	1
V&V Disposition and Status	OK
V&V Charge Time	14.758

A.2 Comments