

V&V Reference Report

L2 ASCDS Version : 8.4.3

Observation 12516 - L2 Version 3
Chandra X-Ray Center

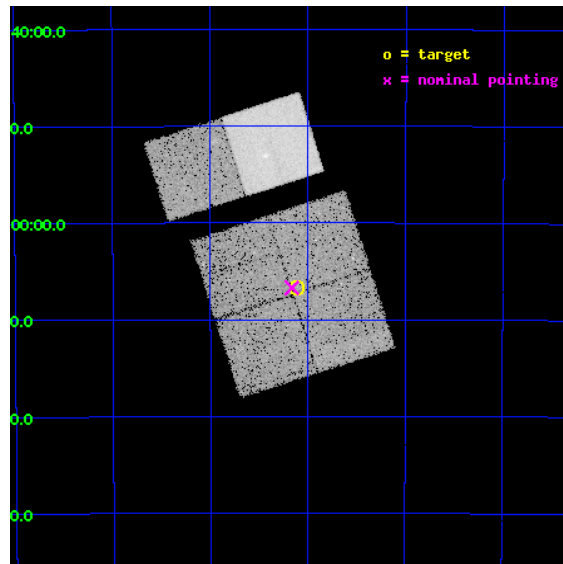
L2 Processing Date : Feb 12 2012

Contents

1	Front	2
2	OBI	3
2.1	OBI	3
2.1.1	Images	3
2.1.2	Bias	3
2.1.3	Parameters	4
2.1.4	Events	4
2.2	Compared Parameters	5
2.3	Aspect	6
2.4	Star Slots	9
2.4.1	Slot 3	9
2.4.2	Slot 4	10
2.4.3	Slot 5	11
2.4.4	Slot 6	12
2.4.5	Slot 7	13
2.5	FID Slots	14
2.5.1	Slot 0	14
2.5.2	Slot 1	15
2.5.3	Slot 2	16
A	Summary	17
A.1	Status	17
A.2	Comments	17

1 Front

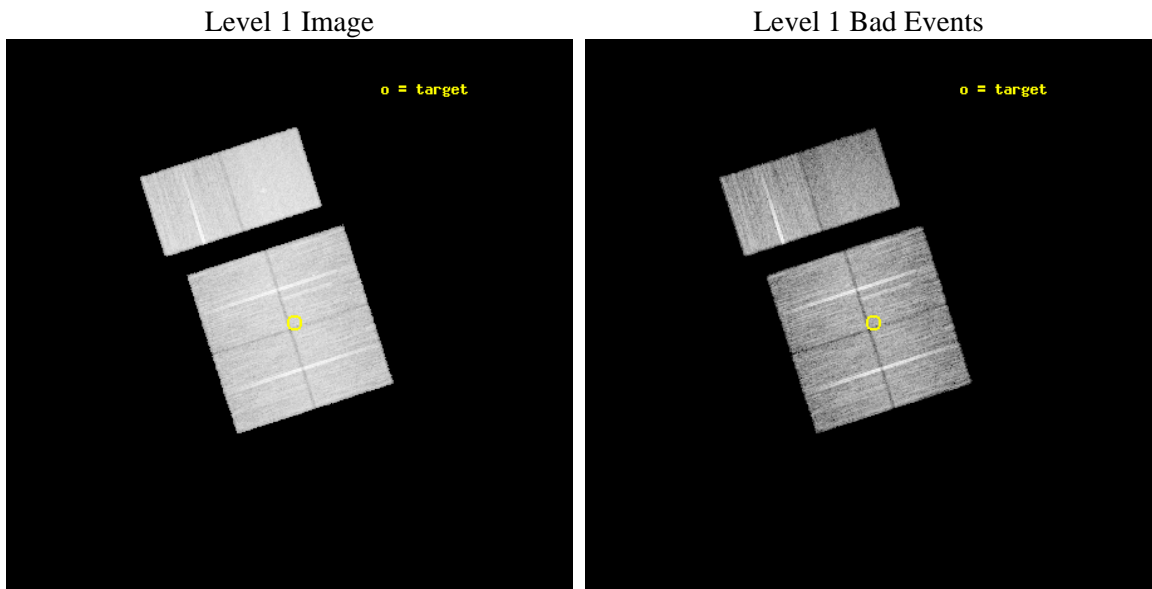
seq_num	401257	Sequence number
obs_id	12516	Observation id
title	Census of the Normal Spiral Arm Region	Proposal title
observer	Dr. John Tomsick	Principal investigator
object	Norma Region	Source name
dtycle	0	
cycle	P	events from which exps? Prim/Second/Both
ra_targ	249.778963	Observer's specified target RA [deg]
dec_targ	-47.1118	Observer's specified target Dec [deg]
ra_nom	249.79083814336	Nominal RA [deg]
dec_nom	-47.11187440358	Nominal Dec [deg]
roll_nom	342.21738611537	Nominal Roll [deg]
revision	3	Processing version of data
ontime	19756.79992646	Sum of GTIs [s]
livetime	19506.627429674	Livetime [s]
ontime0	19756.79992646	Sum of GTIs [s]
ontime1	19756.79992646	Sum of GTIs [s]
ontime2	19753.558876276	Sum of GTIs [s]
ontime3	19756.79992646	Sum of GTIs [s]
ontime6	19756.79992646	Sum of GTIs [s]
ontime7	19756.79992646	Sum of GTIs [s]
l2events	133227	Number of level 2 events



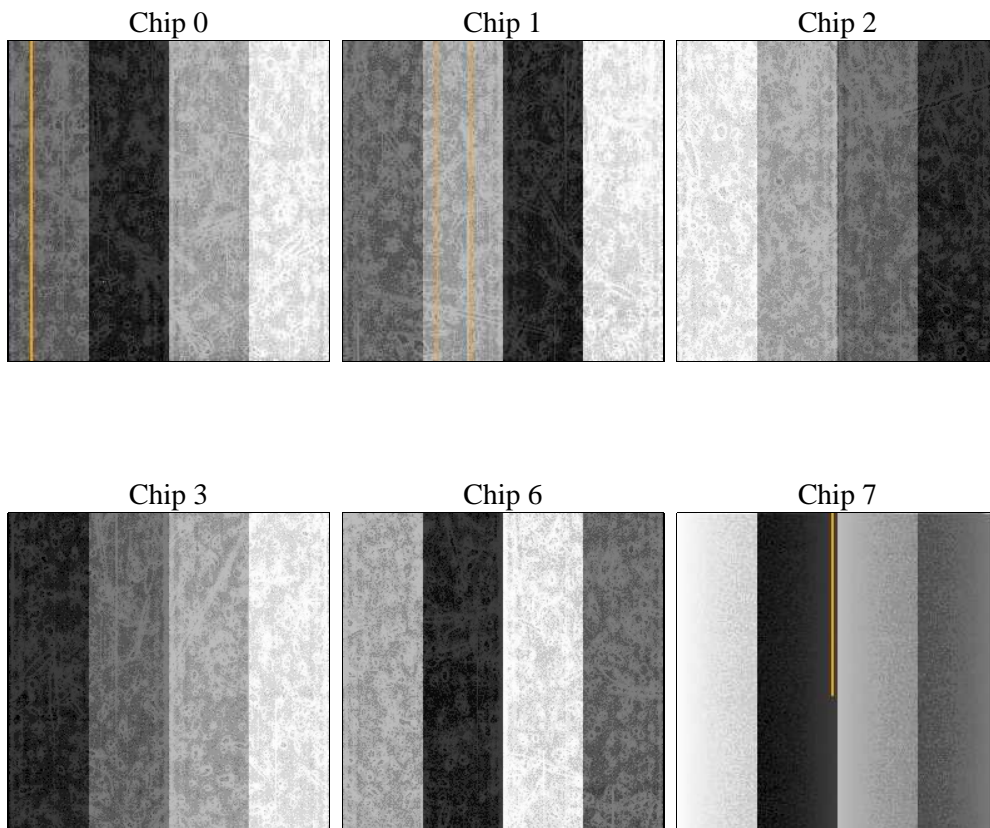
2 OBI

2.1 OBI

2.1.1 Images



2.1.2 Bias



2.1.3 Parameters

obi_num	1	Obi number	sched_exp_time	20000.000000	[s] Scheduled observation exposure time
ascdsver	8.4.3	Processing system revision	ontime	19756.79992646	Sum of GTIs [s]
caldsver	4.4.7	 	ontime0	19756.79992646	Sum of GTIs [s]
date	2012-02-12T11:09:10	Date and time of file creation	ontime1	19756.79992646	Sum of GTIs [s]
revision	3	Processing version of data	ontime2	19753.558876276	Sum of GTIs [s]
			ontime3	19756.79992646	Sum of GTIs [s]
			ontime6	19756.79992646	Sum of GTIs [s]
			ontime7	19756.79992646	Sum of GTIs [s]
			l1events	758176	Number of level 1 events

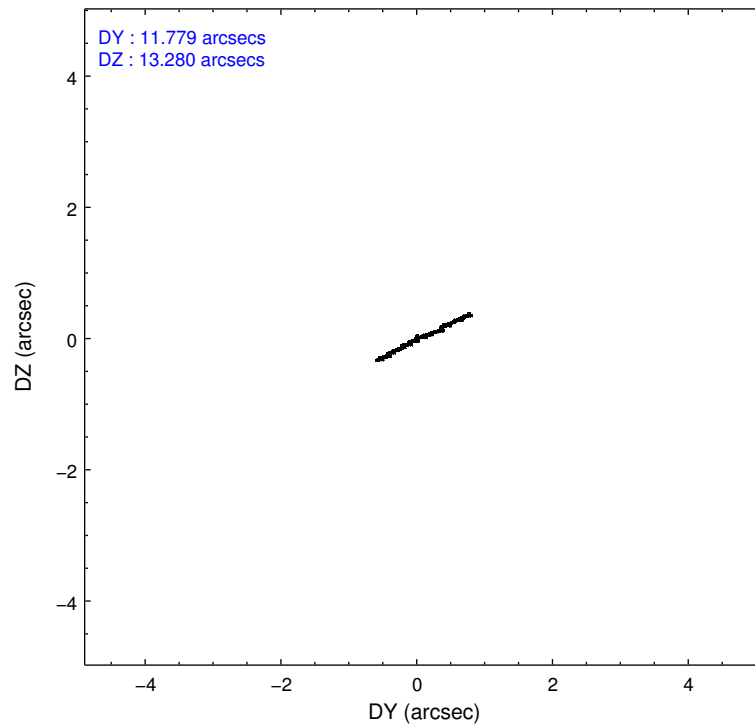
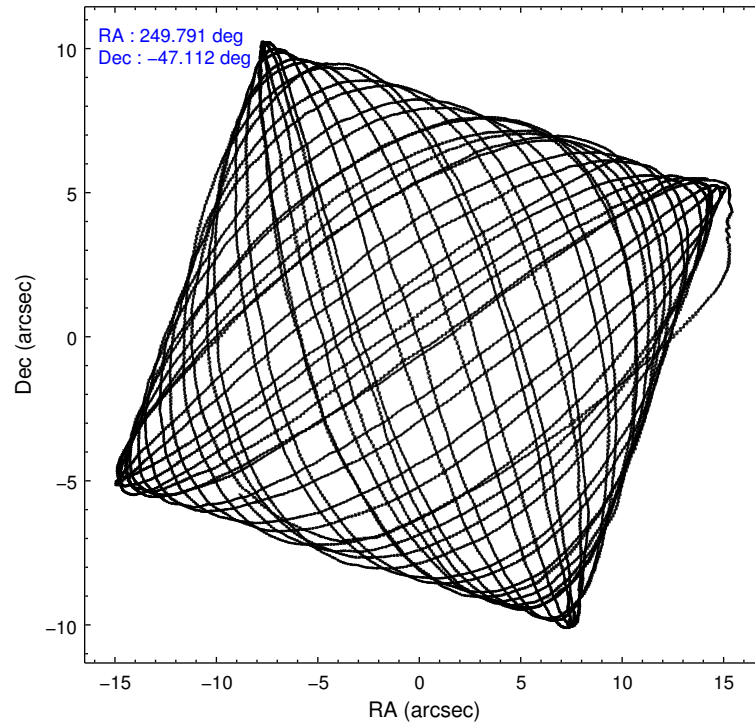
2.1.4 Events

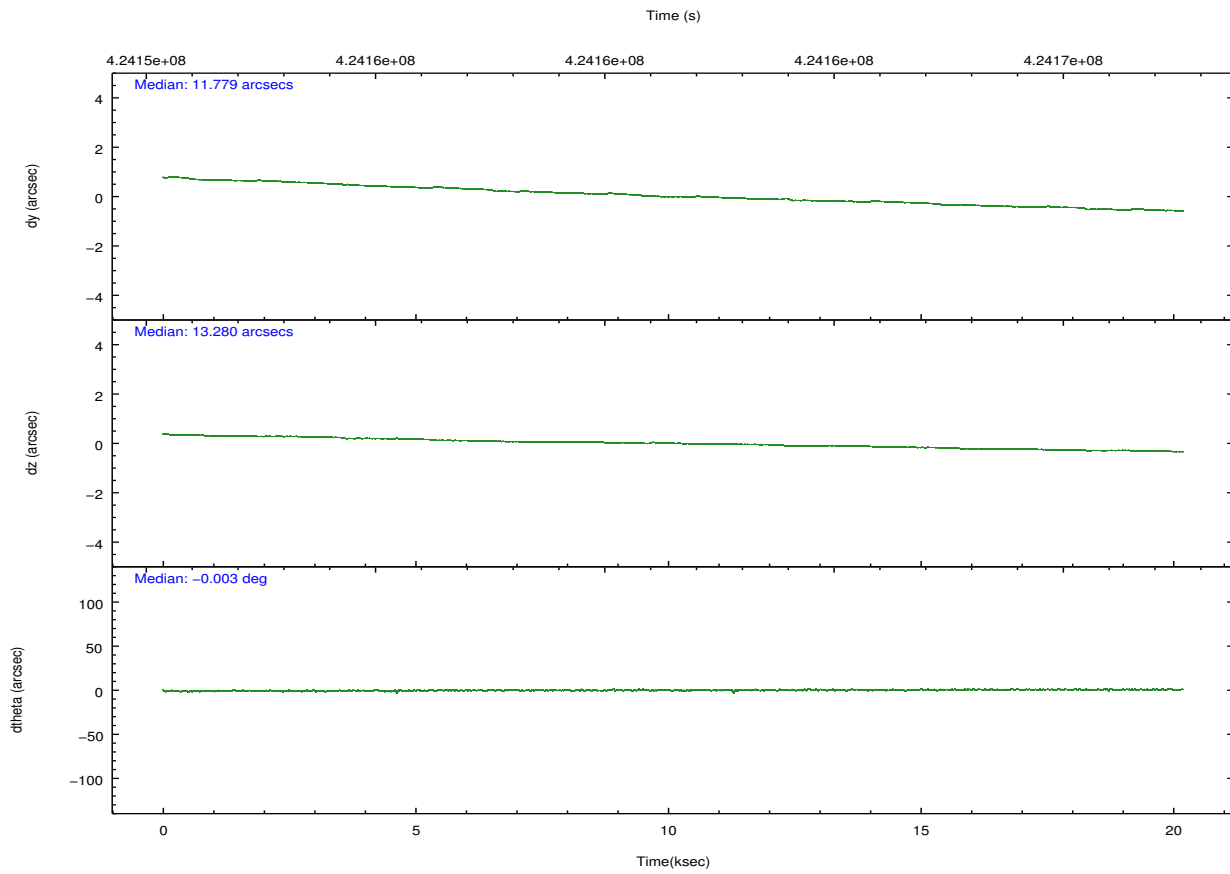
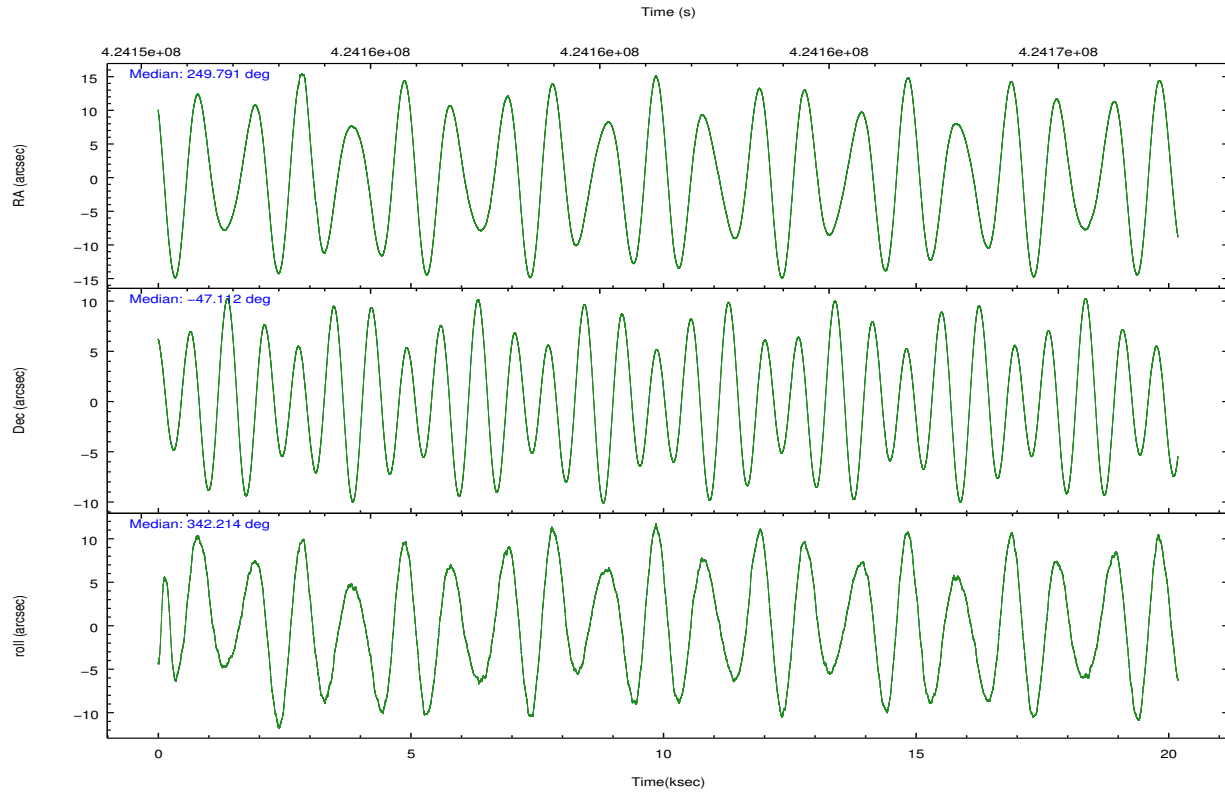
	ccd 0	ccd 1	ccd 2	ccd 3	ccd 6	ccd 7		ccd 0	ccd 1	ccd 2	ccd 3	ccd 6	ccd 7
level 1 events	112716	115210	123822	121106	129131	156191	grade 0 events	5625	6084	5432	5757	5775	6577
rejected events	97939	99305	109691	106541	113644	85391		4%	5%	4%	4%	4%	4%
rejected %	86%	86%	88%	87%	88%	54%	grade 1 events	70	65	66	72	67	167
								0%	0%	0%	0%	0%	0%
							grade 2 events	3434	3491	3251	3042	3431	14546
								3%	3%	2%	2%	2%	9%
							grade 3 events	1417	1521	1365	1463	1464	6075
								1%	1%	1%	1%	1%	3%
							grade 4 events	1393	1502	1431	1429	1476	6071
								1%	1%	1%	1%	1%	3%
							grade 5 events	4976	5474	4751	5801	5813	15762
								4%	4%	3%	4%	4%	10%
							grade 6 events	2916	3315	2654	2882	3346	37550
								2%	2%	2%	2%	2%	24%
							grade 7 events	92885	93758	104872	100660	107759	69443
								82%	81%	84%	83%	83%	44%

2.2 Compared Parameters

Parameter	Planned	Actual	Parameter	Planned	Actual
Instrument	ACIS	ACIS	Obspar format version number	7	7
Detector	ACIS-012367	ACIS-012367	Obspar file type	PREDICTED	ACTUAL
Grating	NONE	NONE	Obspar update status	NONE	UPDATED
Data mode	VFAINT	VFAINT	CCD I0 on	Y	Y
Observation mode	POINTING	POINTING	CCD I1 on	Y	Y
[deg] Pointing RA	249.751378	249.7908381433561	CCD I2 on	Y	Y
[deg] Pointing Dec	-47.117792	-47.11187440357971	CCD I3 on	Y	Y
[deg] Pointing Roll	341.979784	342.2173861153719	CCD S0 on	N	N
[mm] SIM focus pos	-0.782348	-0.7809083437167272	CCD S1 on	N	N
[mm] SIM defocus	0	0.001439871863259334	CCD S2 on	O2	Y
[mm] SIM translation stage pos	-233.592463	-233.5874344608287	CCD S3 on	O1	Y
[mm] SIM translation stage offset	0	-0.005018542100998502	CCD S4 on	N	N
[s] Observation start time (MET)	424151574.184000	424151198.44424	CCD S5 on	N	N
Observation start date	2011-06-11T03:51:48	2011-06-11T03:46:38	Number of optional ACIS chips dropped	0	0
[s] Observation end time (MET)	424171574.184000	424171708.69531	On-chip summing requested	N	N
Observation end date	2011-06-11T09:25:08	2011-06-11T09:28:28	Subarray requested	NONE	NONE
Read mode	TIMED	TIMED	Alternating exposures requested	N	N
			[s] Primary exposure time	0.000000	3.2

2.3 Aspect





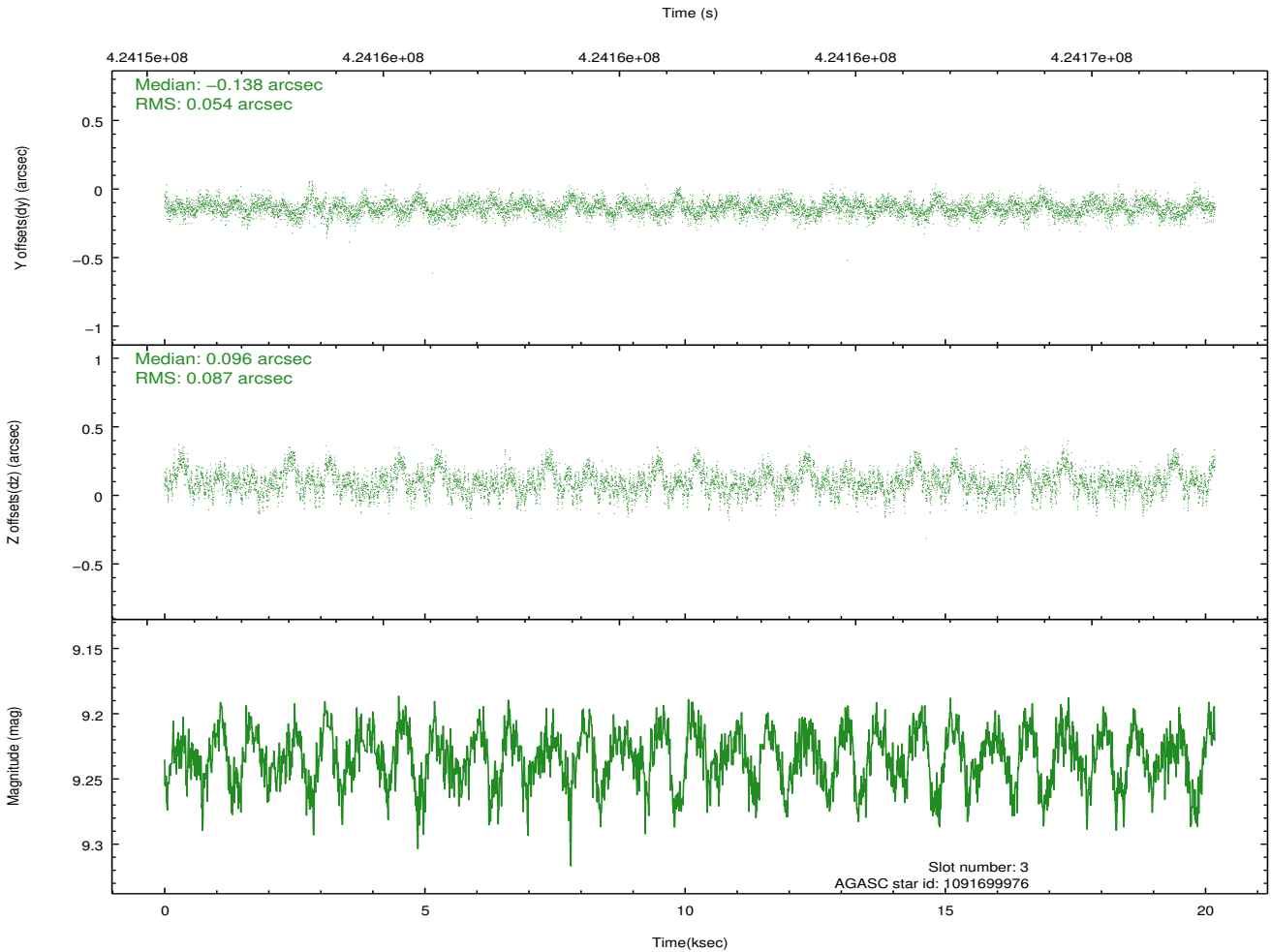
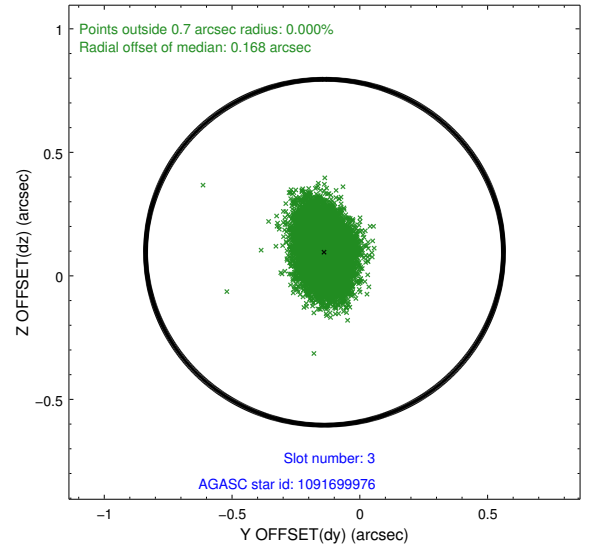
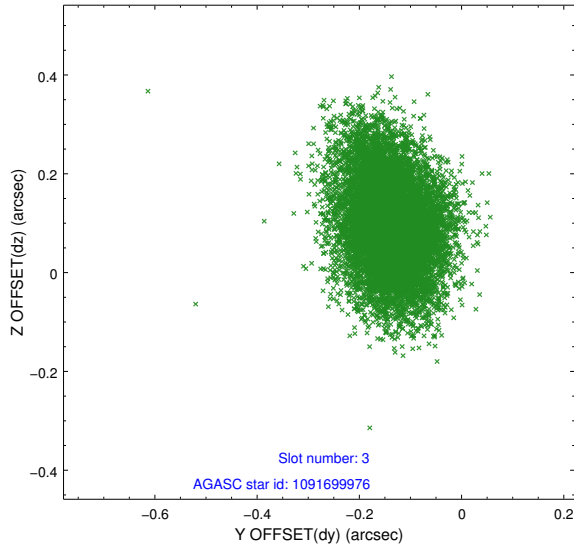
Slot Statistics

slot	status	id	mag	n_pts	med_dy	med_dz	dr1	dr2	ra	dec	mean_y	mean_z
0	FID	ACIS-I-1	7.15	4924	0.052	0.000	0.010	0.022	0.000000	0.000000	927.78	-836.82
1	FID	ACIS-I-5	7.14	4924	-0.203	0.063	0.009	0.015	0.000000	0.000000	-1820.50	1060.61
2	FID	ACIS-I-6	7.15	4924	0.061	0.006	0.008	0.014	0.000000	0.000000	393.11	1705.29
3	GUIDE	1091699976	9.23	9844	-0.138	0.096	0.106	0.183	249.617486	-47.776281	425.93	-2354.31
4	GUIDE	1091704824	9.13	9842	0.235	-0.037	0.117	0.181	249.173141	-47.336759	-1095.16	-1191.01
5	GUIDE	1091705016	7.82	9845	-0.132	-0.017	0.064	0.105	249.888030	-47.558250	806.70	-1405.21
6	GUIDE	1091709408	9.18	9785	0.113	-0.091	0.108	0.185	249.304466	-47.312562	-818.69	-1007.19
7	GUIDE	1091709800	9.17	9841	-0.083	0.044	0.098	0.166	249.801955	-47.310212	332.74	-621.57

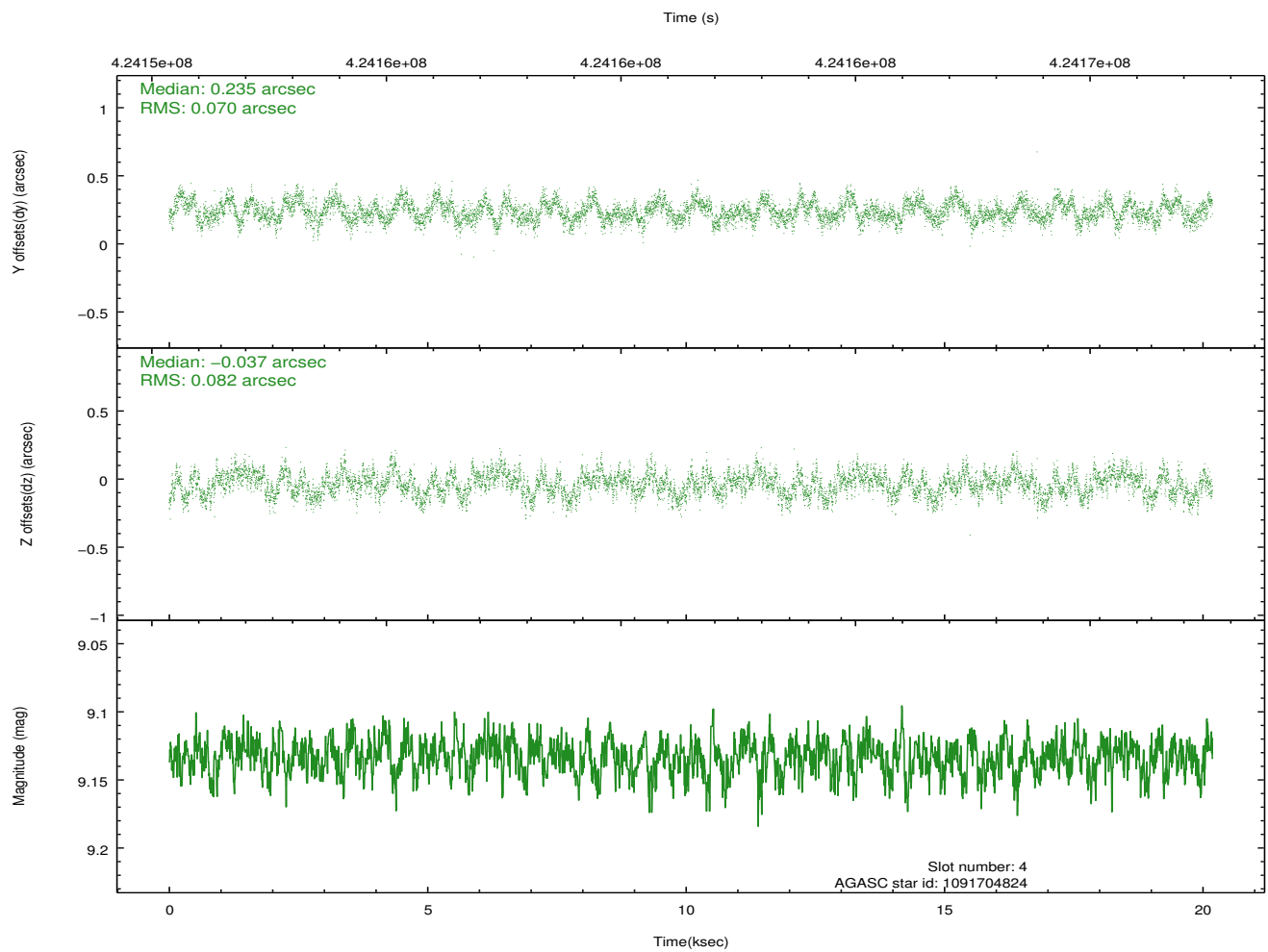
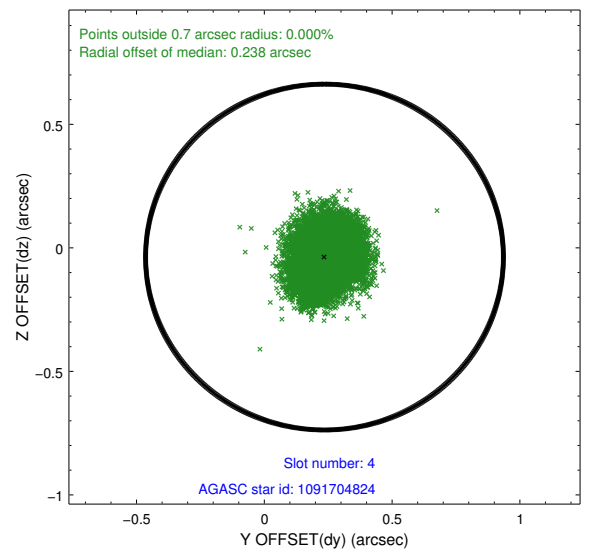
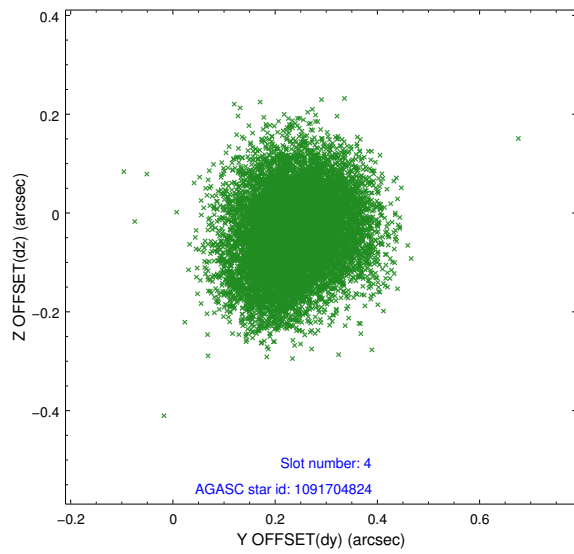
∞

2.4 Star Slots

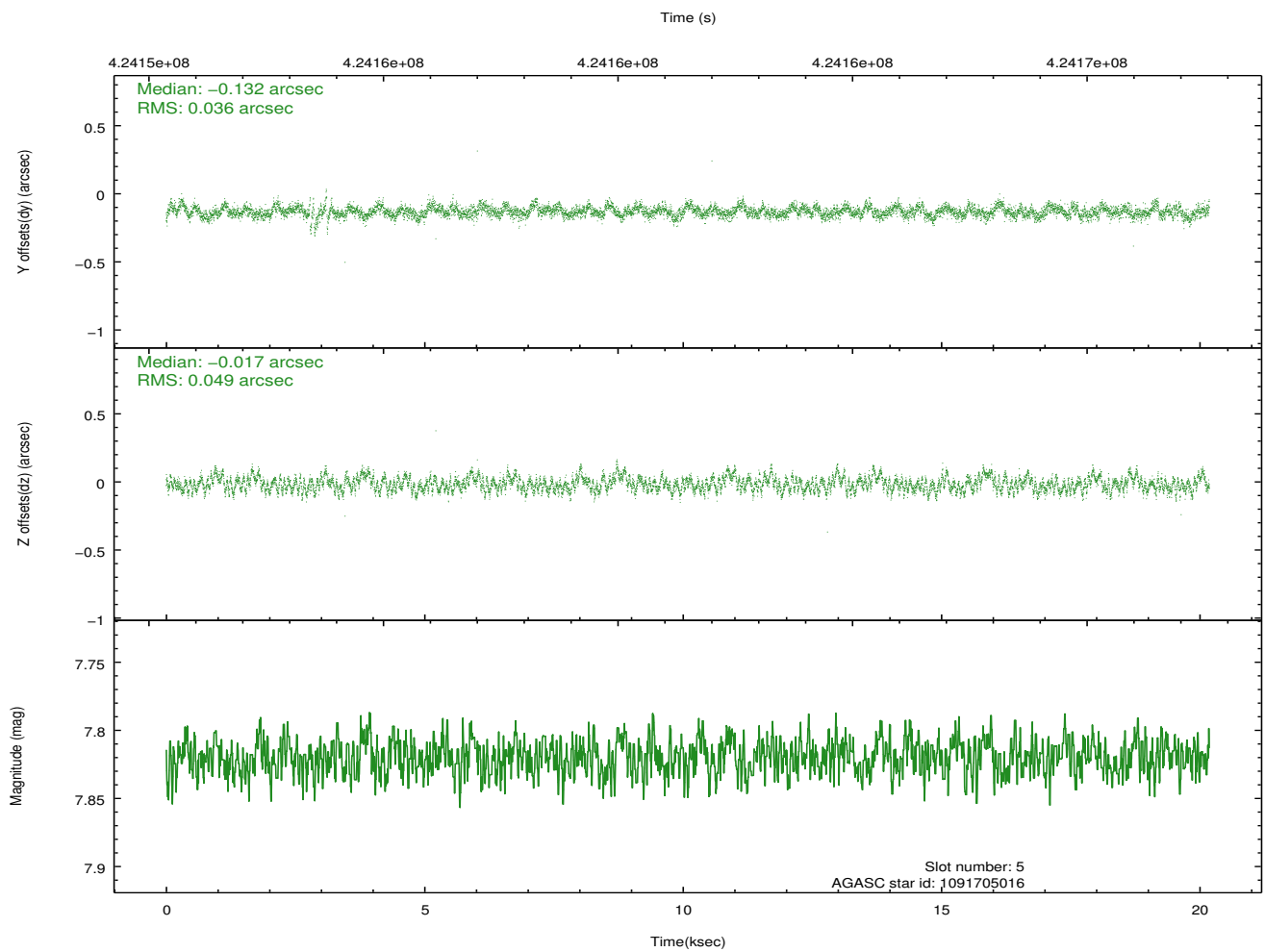
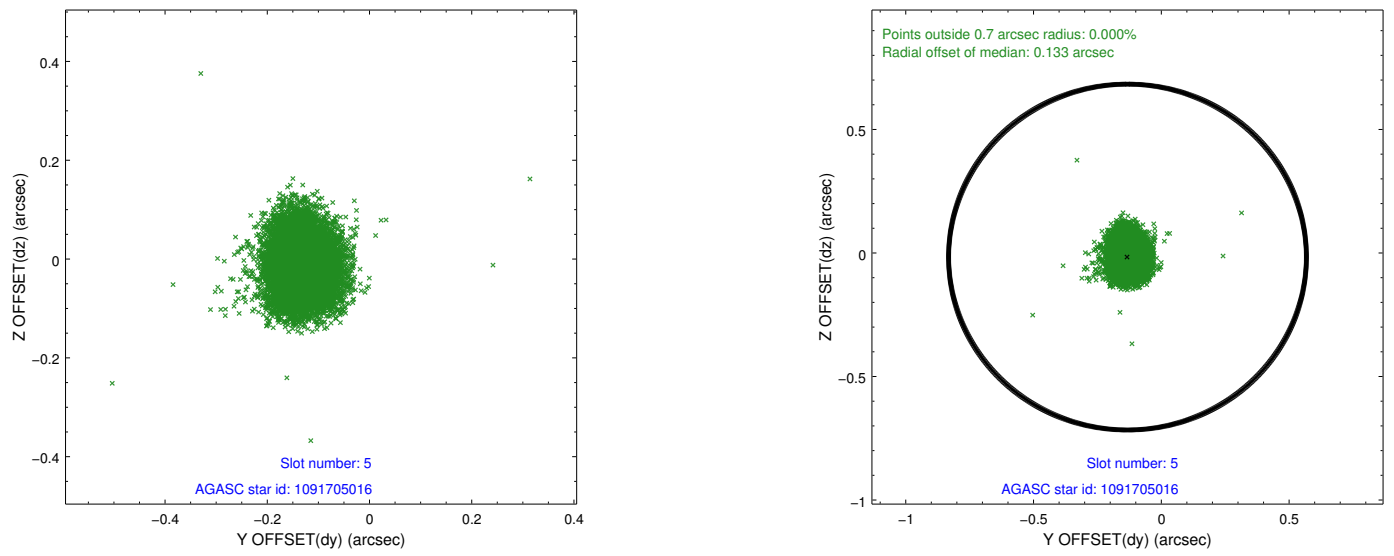
2.4.1 Slot 3



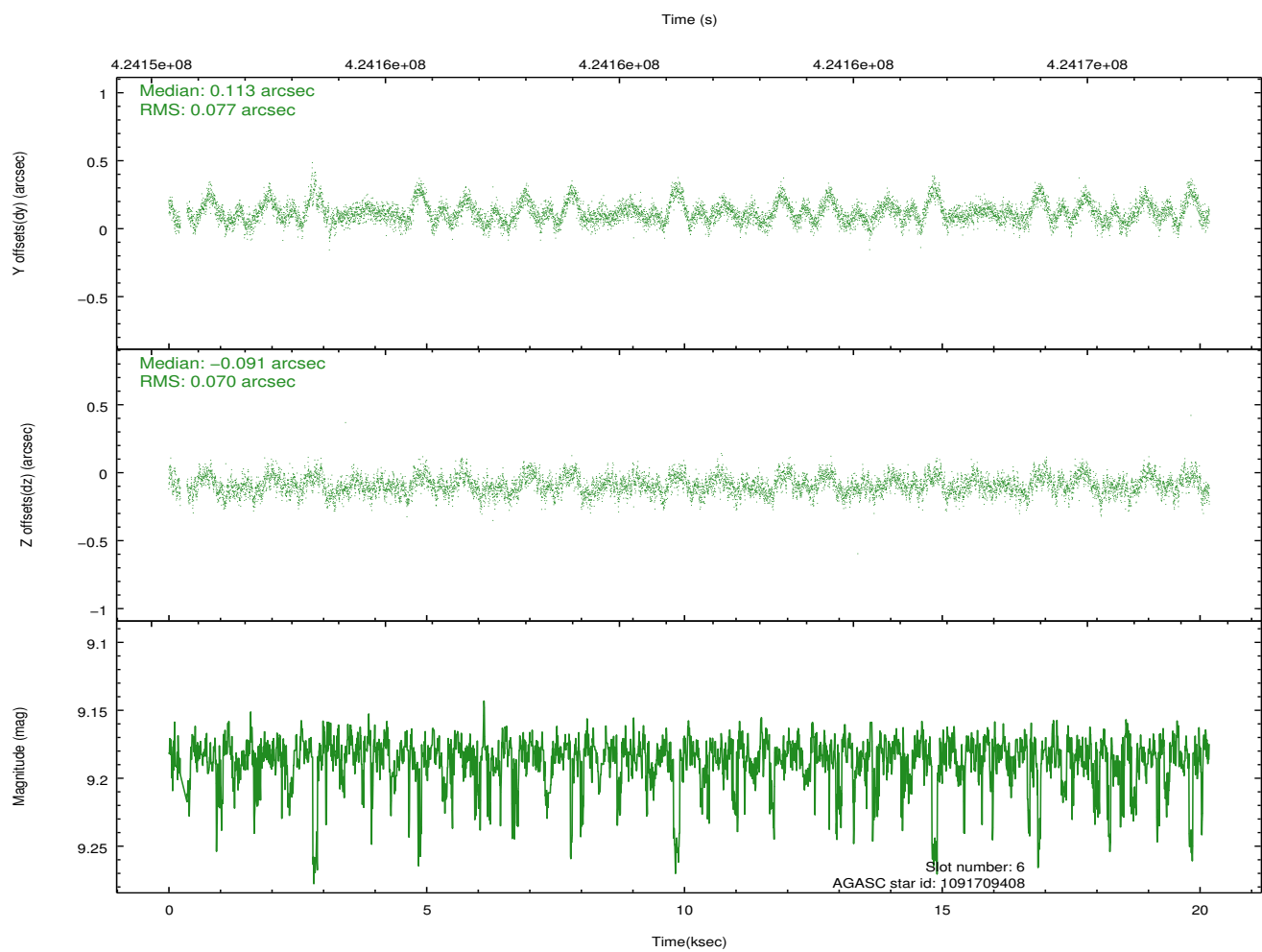
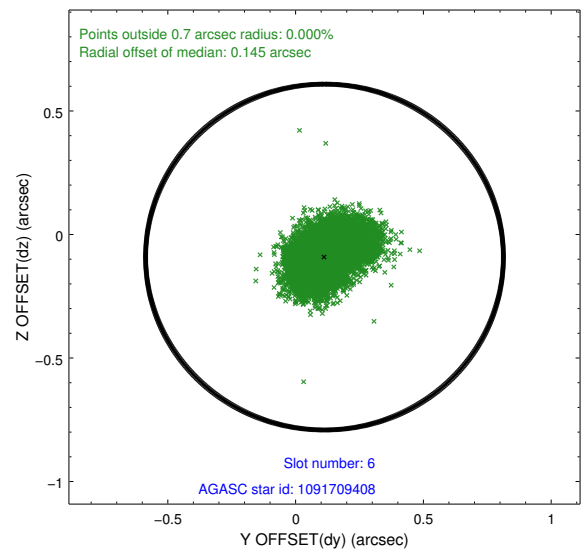
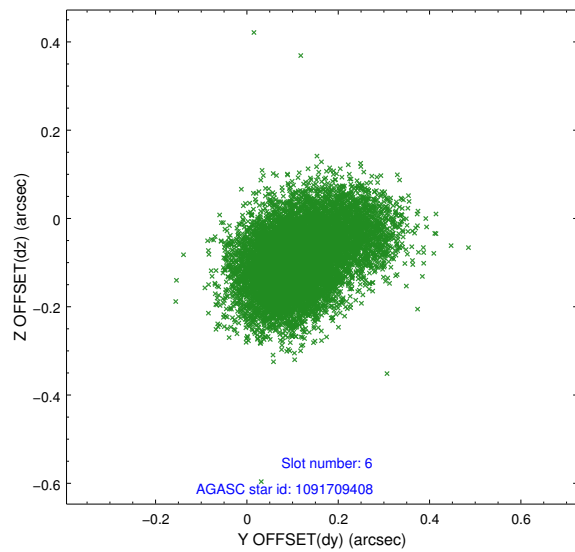
2.4.2 Slot 4



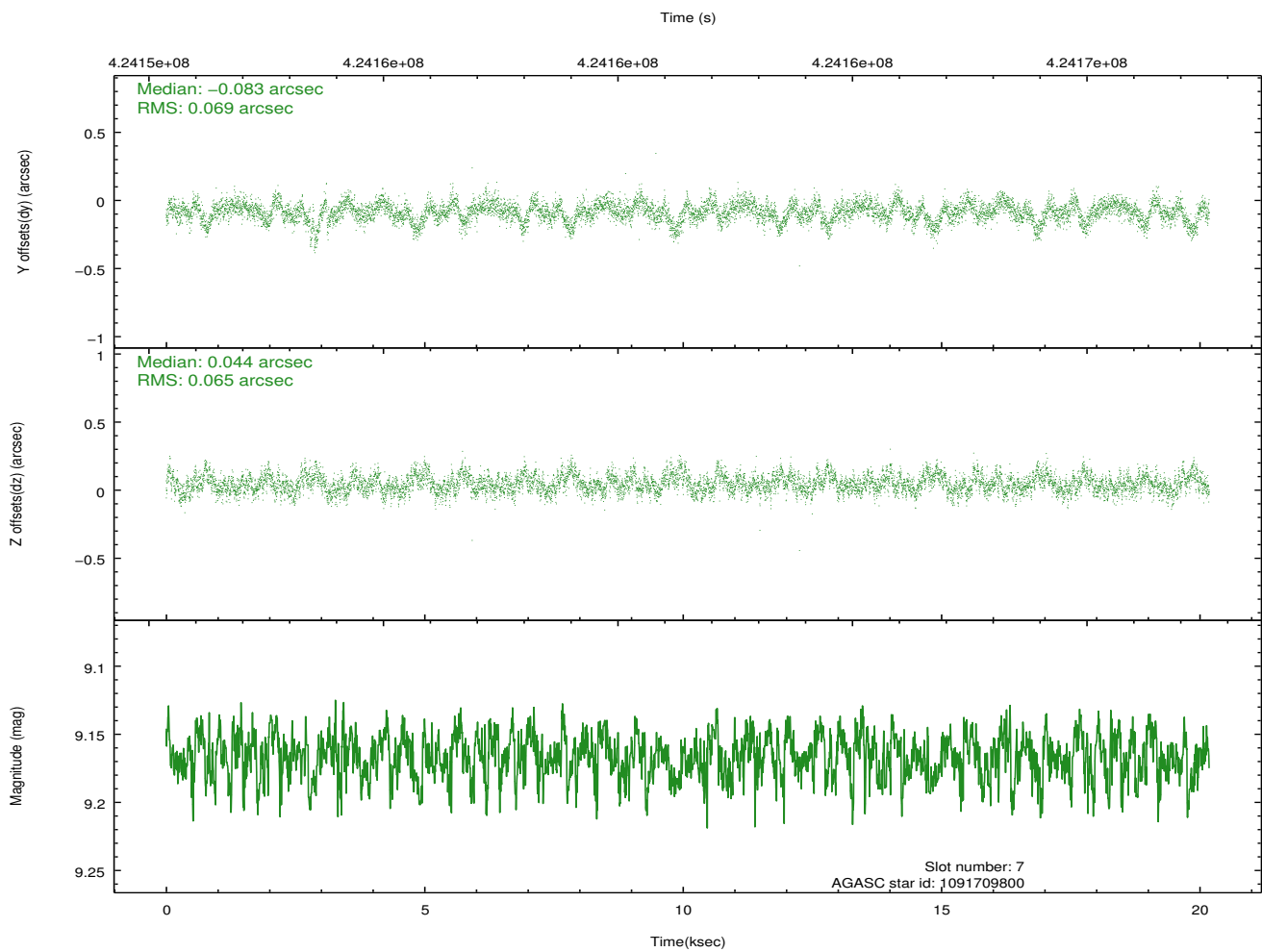
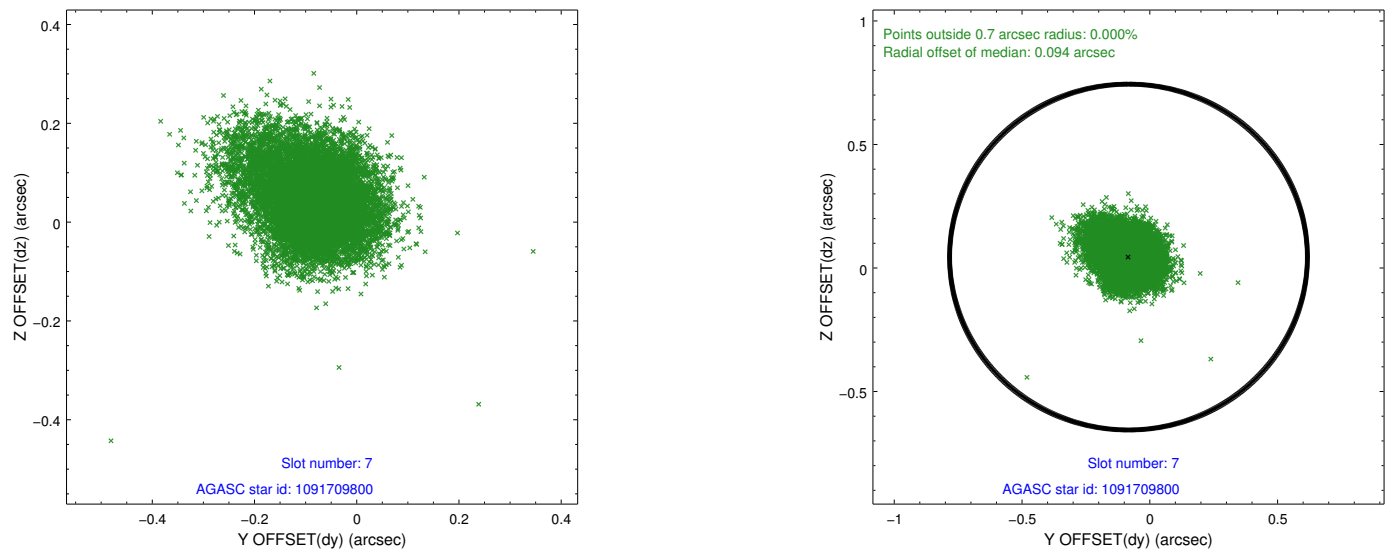
2.4.3 Slot 5



2.4.4 Slot 6

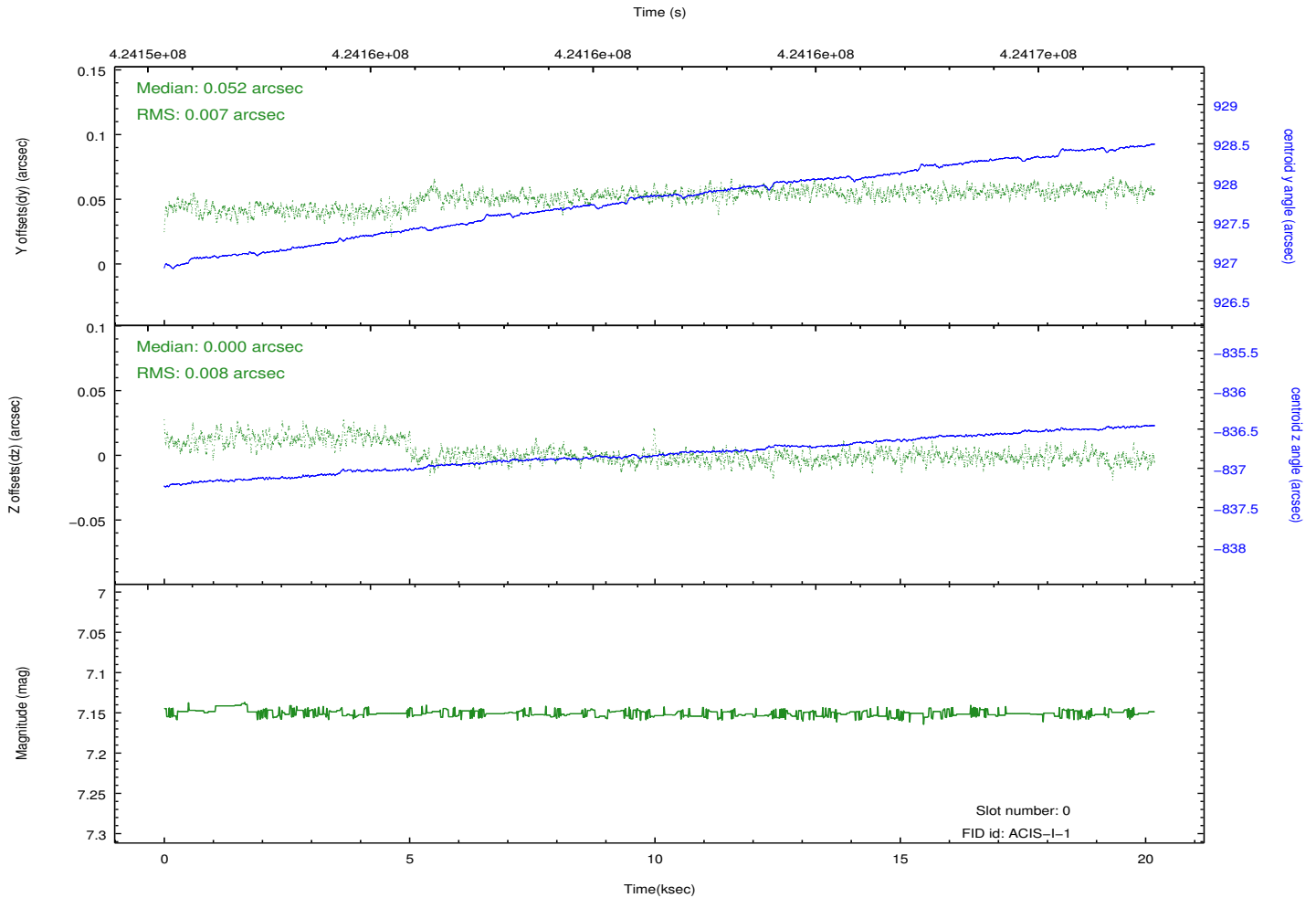
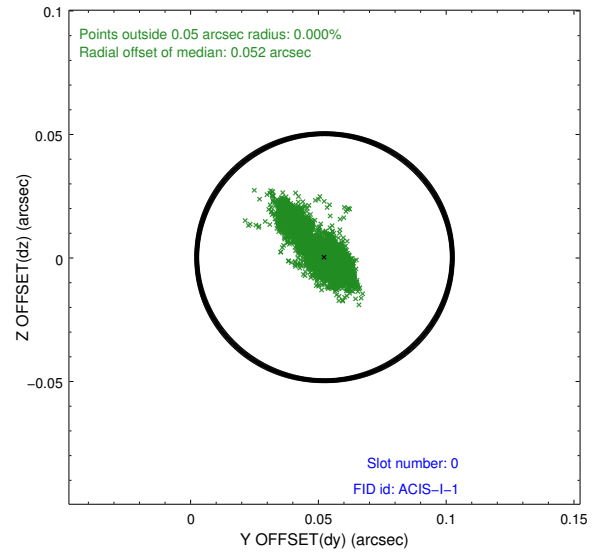
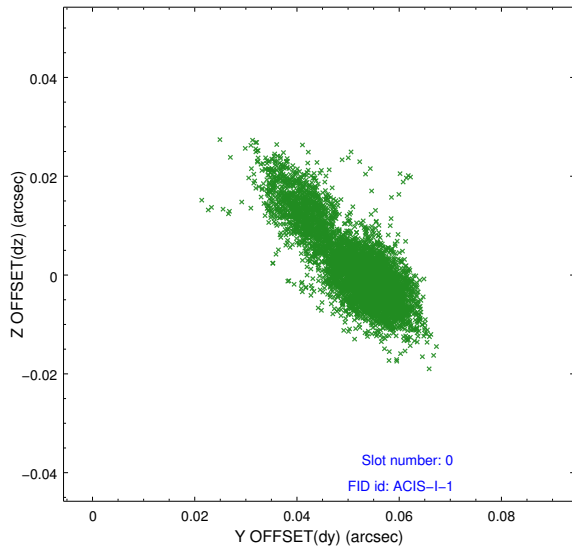


2.4.5 Slot 7

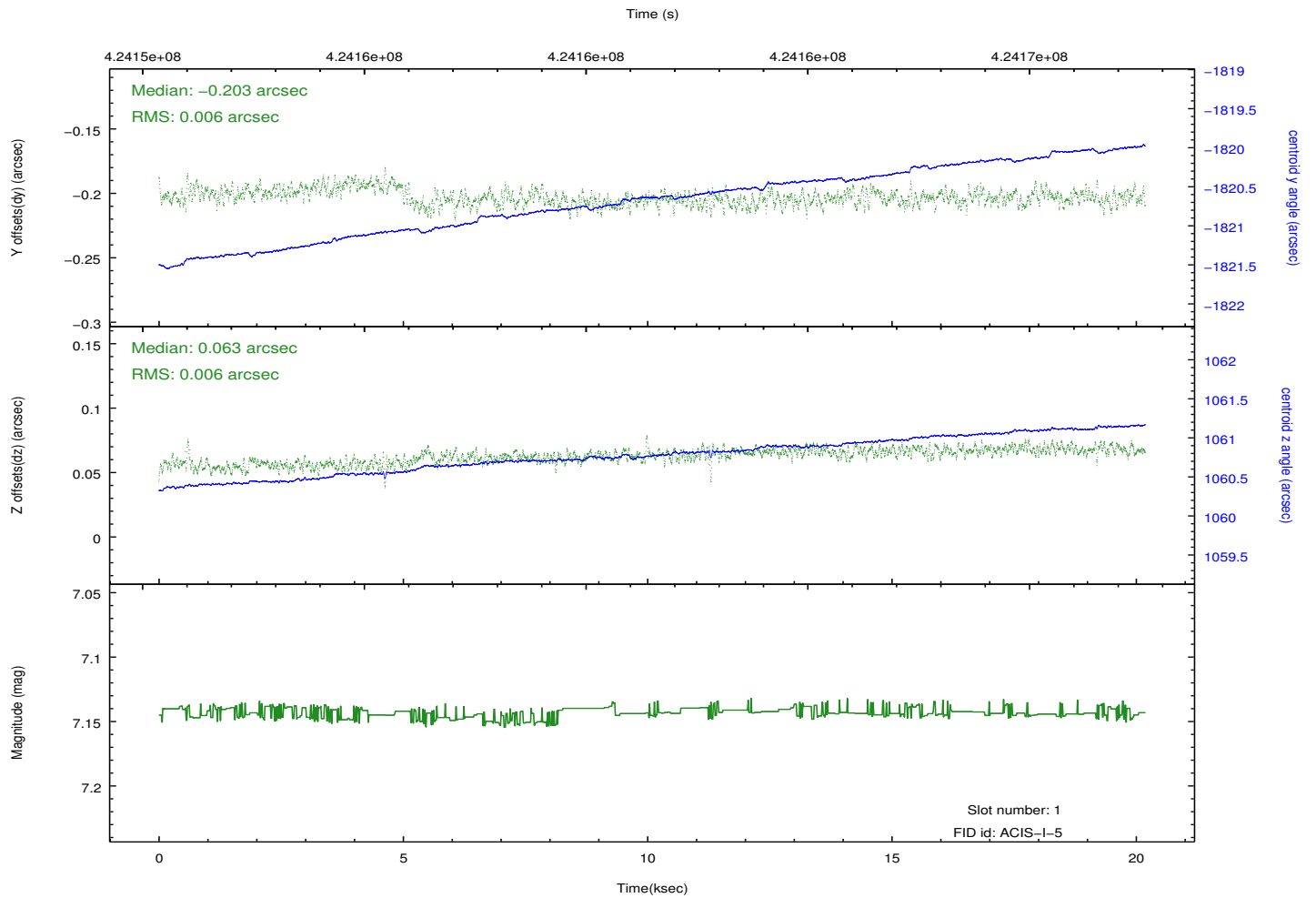
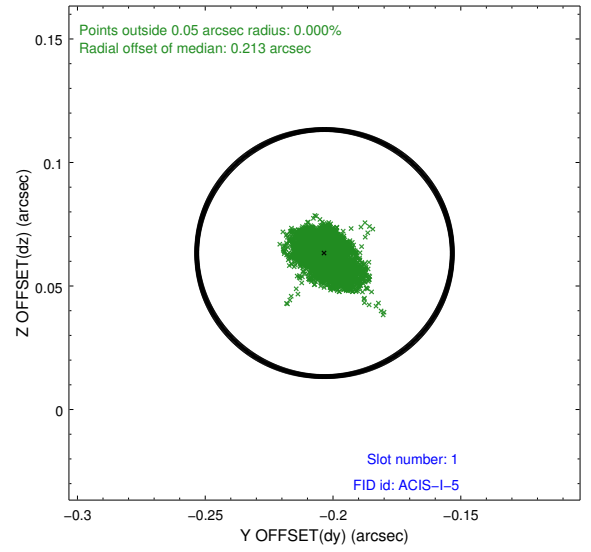
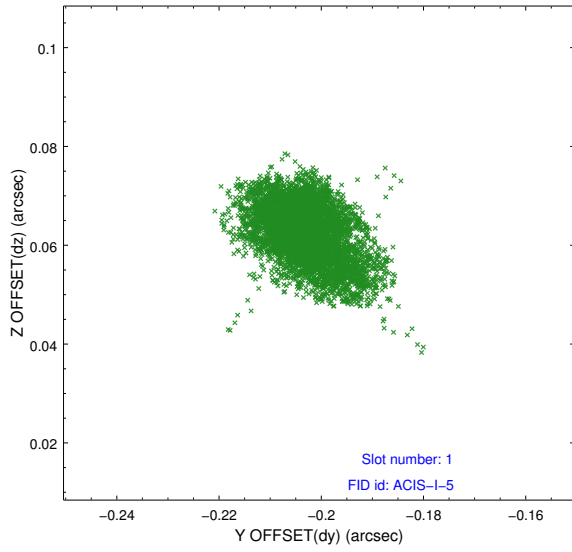


2.5 FID Slots

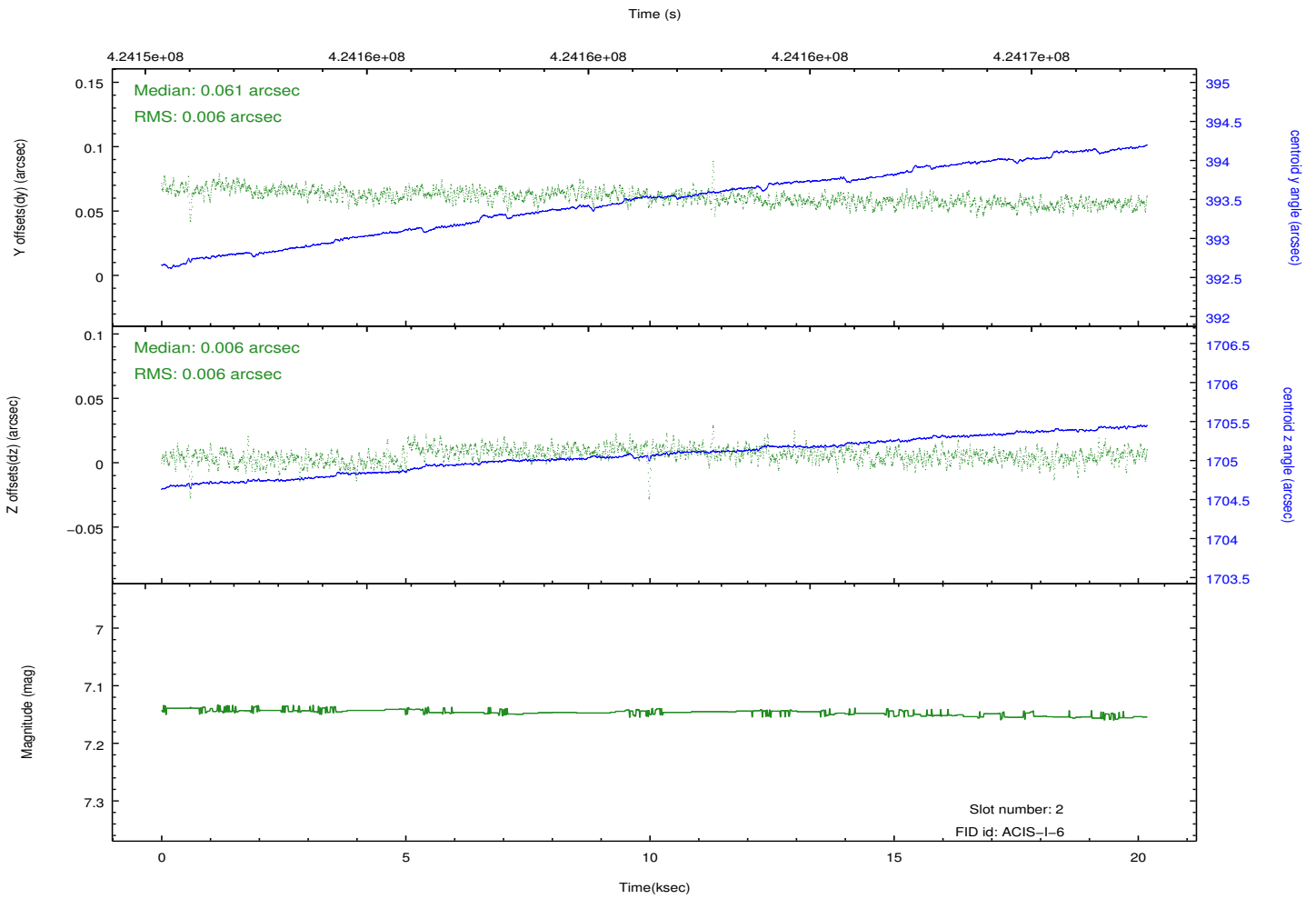
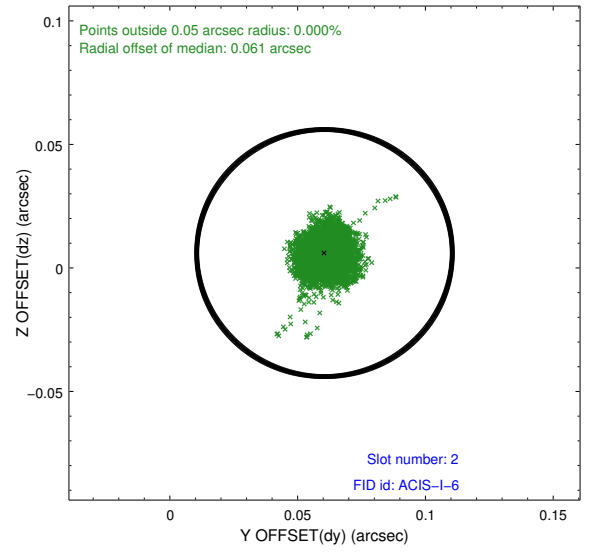
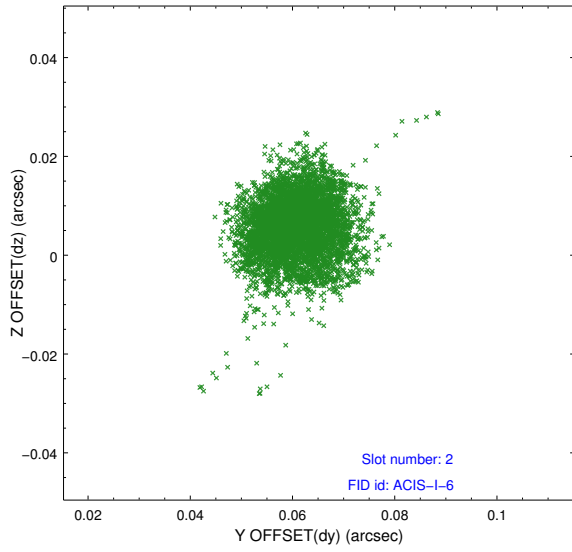
2.5.1 Slot 0



2.5.2 Slot 1



2.5.3 Slot 2



A Summary

A.1 Status

V&V Scientist	Jen Lauer
V&V Date (YYYY-MM-DD)	2012.02.14
V&V Edition	1
V&V Disposition and Status	OK
V&V Charge Time	19.75679992646

A.2 Comments

Joint proposal: NOAO