

V&V Reference Report

L2 ASCDS Version : 8.4.3

Observation 12546 - L2 Version 2
Chandra X-Ray Center

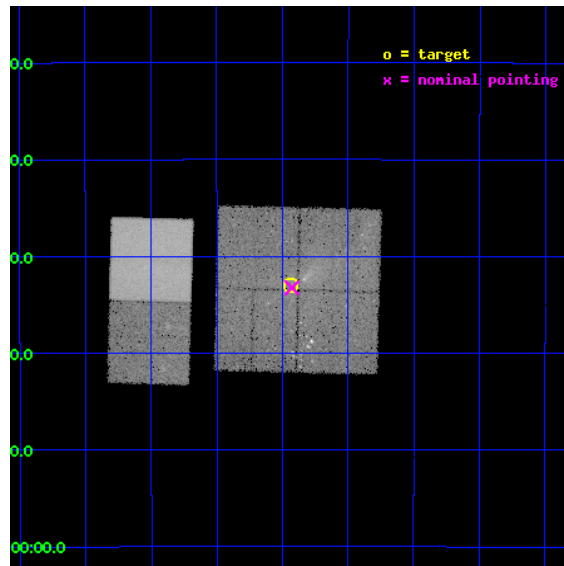
L2 Processing Date : Feb 18 2012

Contents

1	Front	2
2	OBI	3
2.1	OBI	3
2.1.1	Images	3
2.1.2	Bias	3
2.1.3	Parameters	4
2.1.4	Events	4
2.2	Compared Parameters	5
2.3	Aspect	6
2.4	Star Slots	9
2.4.1	Slot 3	9
2.4.2	Slot 4	10
2.4.3	Slot 5	11
2.4.4	Slot 6	12
2.4.5	Slot 7	13
2.5	FID Slots	14
2.5.1	Slot 0	14
2.5.2	Slot 1	15
2.5.3	Slot 2	16
A	Summary	17
A.1	Status	17
A.2	Comments	17

1 Front

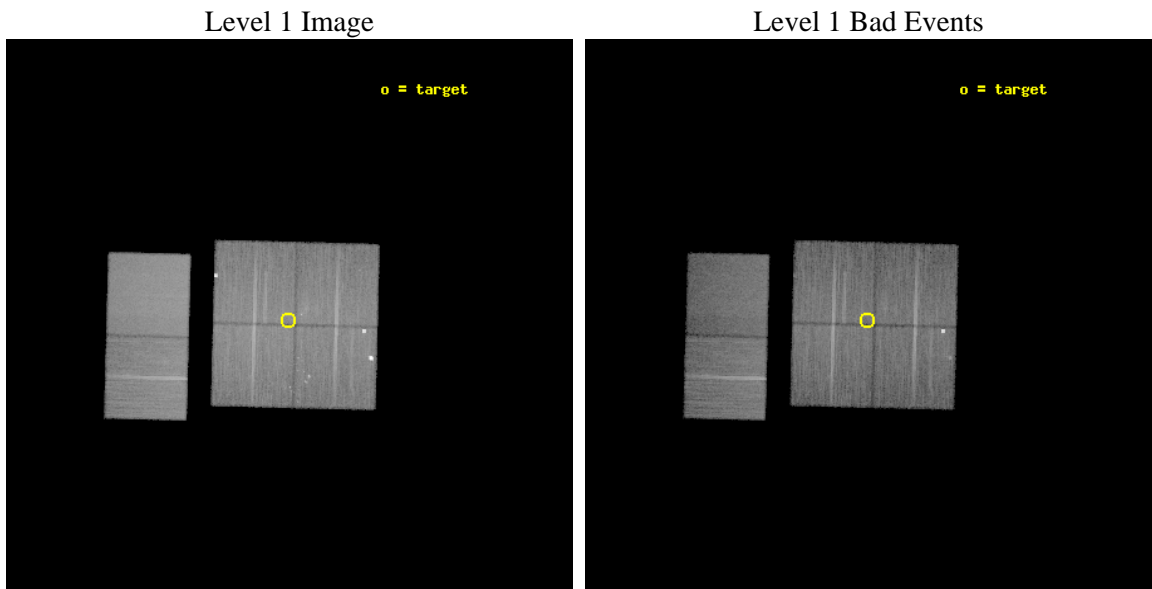
seq_num	501379	Sequence number
obs_id	12546	Observation id
title	A Survey of PWNe around Narrow-Pulse Gamma-ray Pulsars	Proposal ti
observer	Prof. Roger Romani	Principal investigator
object	J1809-2332	Source name
dtycycle	0	
cycle	P	events from which exps? Prim/Second/Both
ra_targ	272.483917	Observer's specified target RA [deg]
dec_targ	-23.55	Observer's specified target Dec [deg]
ra_nom	272.48211539126	Nominal RA [deg]
dec_nom	-23.554407247651	Nominal Dec [deg]
roll_nom	271.44711240757	Nominal Roll [deg]
revision	2	Processing version of data
ontime	30056.762652755	Sum of GTIs [s]
livetime	29676.165826036	Livetime [s]
ontime0	30043.675291419	Sum of GTIs [s]
ontime1	30053.439512432	Sum of GTIs [s]
ontime2	30053.480542302	Sum of GTIs [s]
ontime3	30056.762652755	Sum of GTIs [s]
ontime6	30056.844732761	Sum of GTIs [s]
ontime7	30056.803692758	Sum of GTIs [s]
l2events	223737	Number of level 2 events



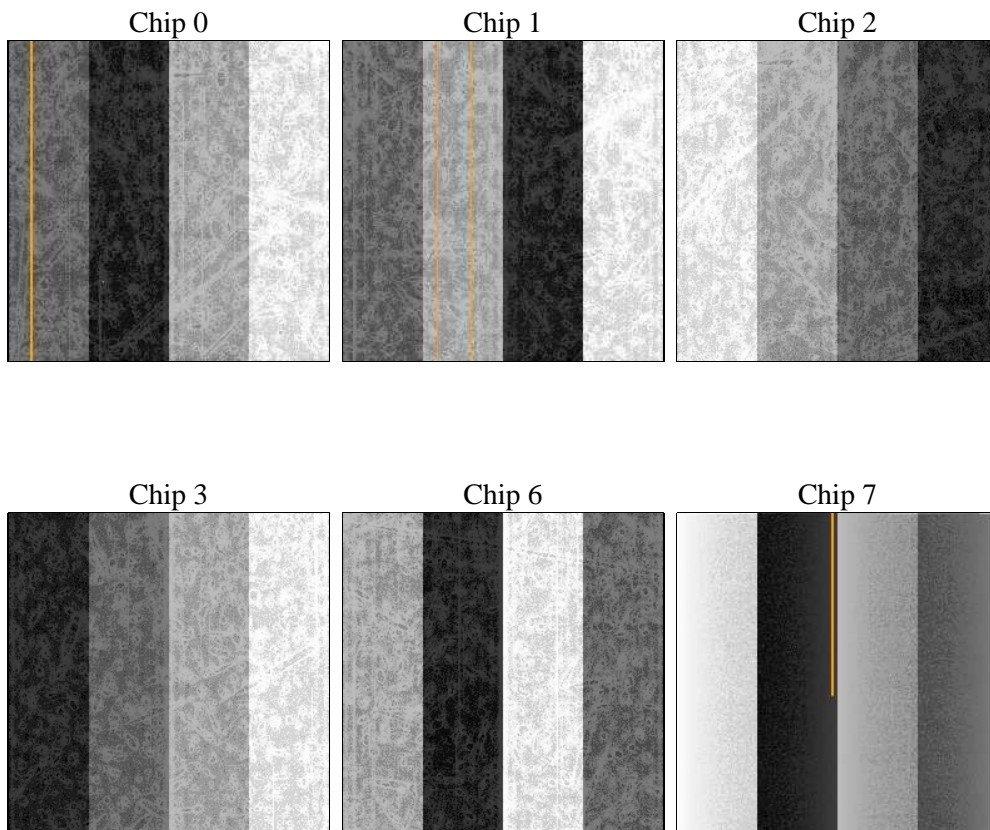
2 OBI

2.1 OBI

2.1.1 Images



2.1.2 Bias



2.1.3 Parameters

obi_num	0	Obi number	sched_exp_time	30000.000000	[s] Scheduled observation exposure time
ascdsver	8.4.3	Processing system revision	ontime	30056.762652755	Sum of GTIs [s]
caldbver	4.4.8	 	ontime0	30043.675291419	Sum of GTIs [s]
date	2012-02-18T18:31:44	Date and time of file creation	ontime1	30053.439512432	Sum of GTIs [s]
revision	2	Processing version of data	ontime2	30053.480542302	Sum of GTIs [s]
			ontime3	30056.762652755	Sum of GTIs [s]
			ontime6	30056.844732761	Sum of GTIs [s]
			ontime7	30056.803692758	Sum of GTIs [s]
			l1events	1236669	Number of level 1 events

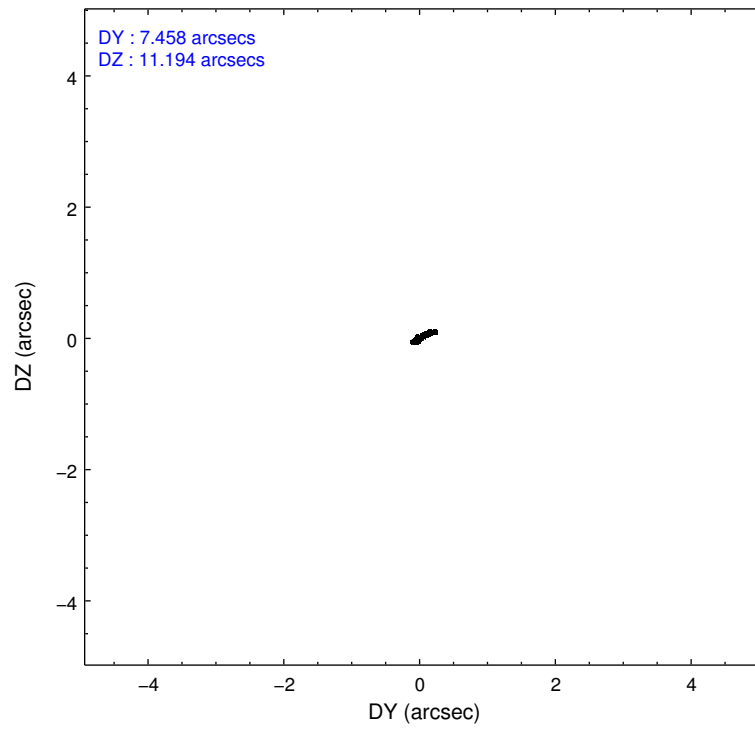
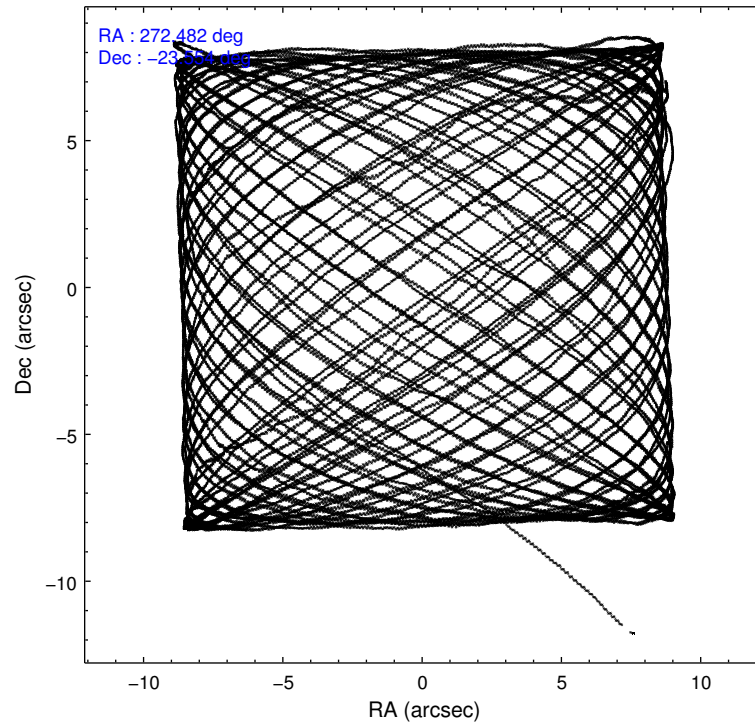
2.1.4 Events

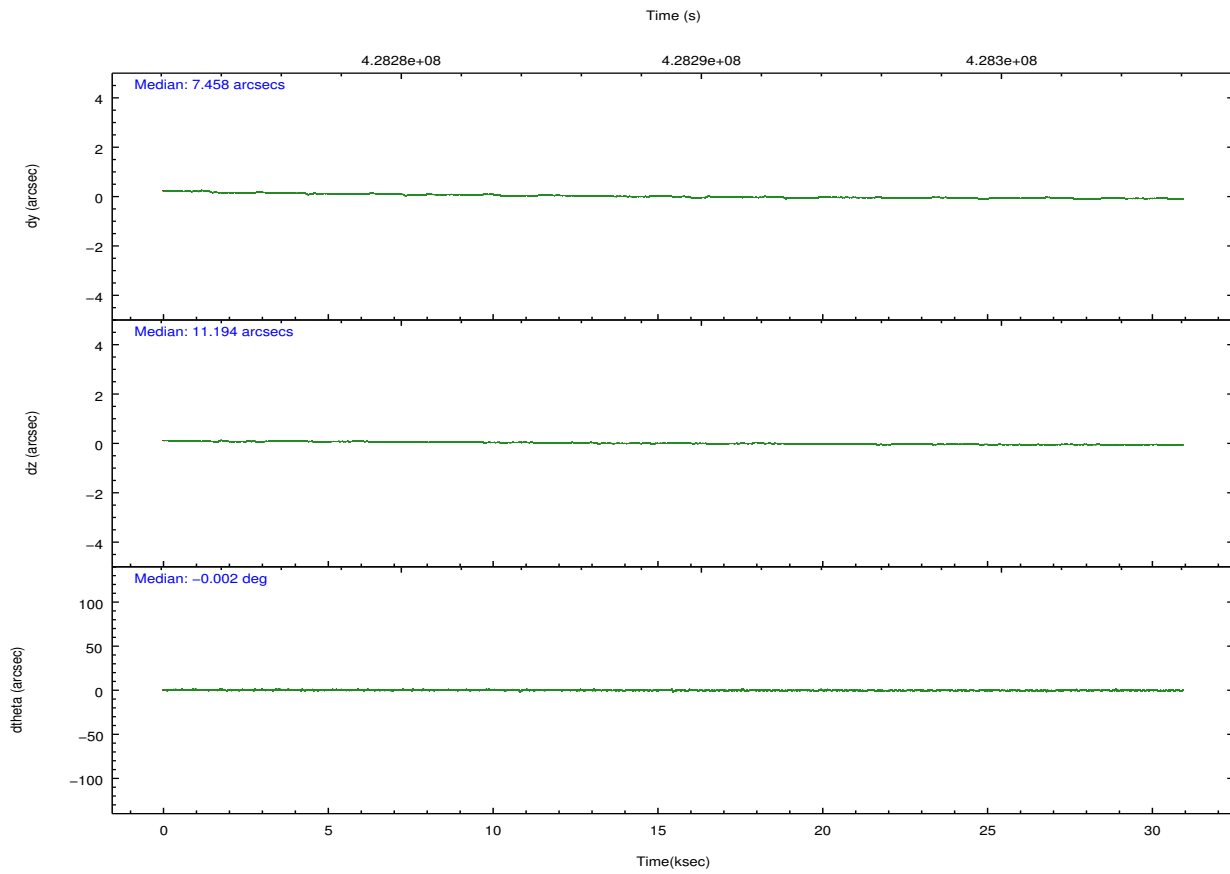
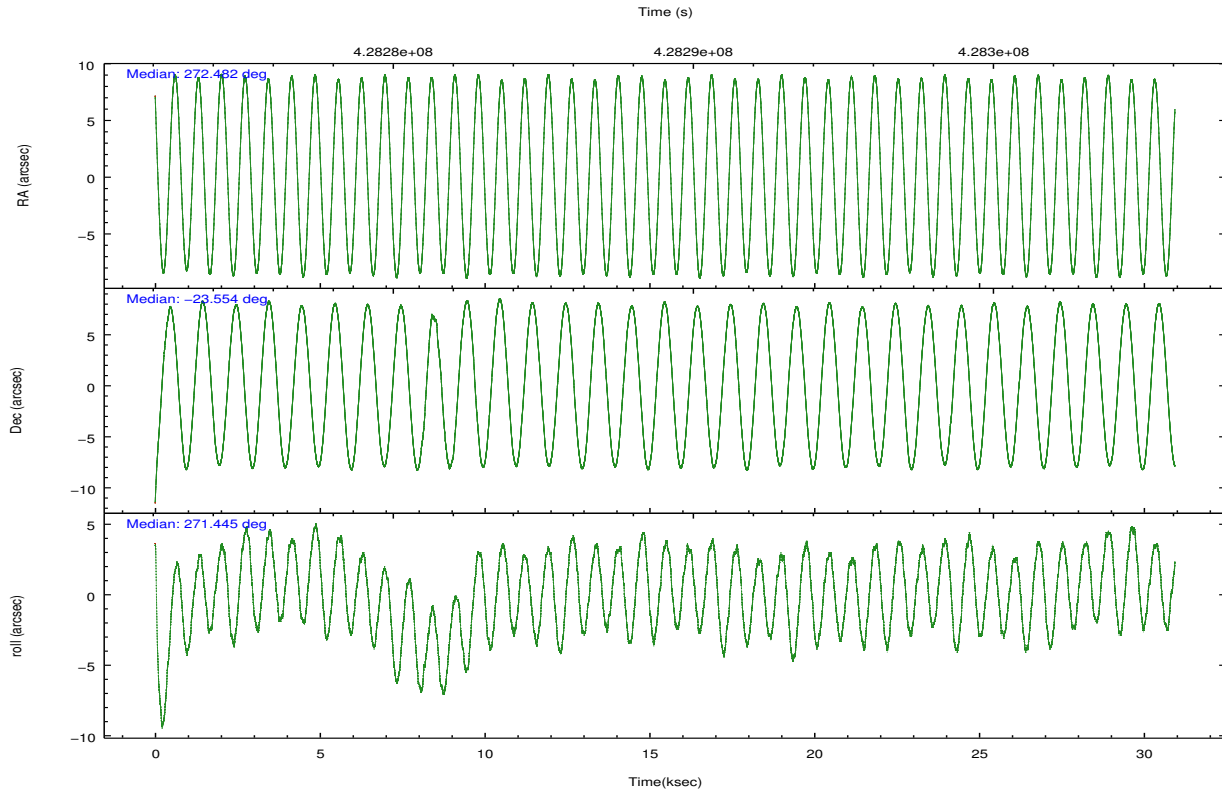
	ccd 0	ccd 1	ccd 2	ccd 3	ccd 6	ccd 7		ccd 0	ccd 1	ccd 2	ccd 3	ccd 6	ccd 7
level 1 events	207209	184719	195964	199739	202758	246280	grade 0 events	30557	14784	11822	18993	9220	10311
rejected events	161282	153226	169852	167001	178320	135929		14%	8%	6%	9%	4%	4%
rejected %	77%	82%	86%	83%	87%	55%	grade 1 events	9150	102	138	163	151	266
								4%	0%	0%	0%	0%	0%
							grade 2 events	6025	6083	5373	4750	5303	22606
								2%	3%	2%	2%	2%	9%
							grade 3 events	2624	2649	2353	2283	2364	9670
								1%	1%	1%	1%	1%	3%
							grade 4 events	2319	2602	2364	2320	2269	9299
								1%	1%	1%	1%	1%	3%
							grade 5 events	8404	8624	7738	9145	9389	24705
								4%	4%	3%	4%	4%	10%
							grade 6 events	4407	5378	4203	4395	5287	58477
								2%	2%	2%	2%	2%	23%
							grade 7 events	143723	144497	161973	157690	168775	110946
								69%	78%	82%	78%	83%	45%

2.2 Compared Parameters

Parameter	Planned	Actual	Parameter	Planned	Actual
Instrument	ACIS	ACIS	Obspar format version number	7	7
Detector	ACIS-012367	ACIS-012367	Obspar file type	PREDICTED	ACTUAL
Grating	NONE	NONE	Obspar update status	NONE	UPDATED
Data mode	VFAINT	VFAINT	CCD I0 on	Y	Y
Observation mode	POINTING	POINTING	CCD I1 on	Y	Y
[deg] Pointing RA	272.466381	272.4821153912619	CCD I2 on	Y	Y
[deg] Pointing Dec	-23.531013	-23.55440724765126	CCD I3 on	Y	Y
[deg] Pointing Roll	271.232138	271.447112407573	CCD S0 on	N	N
[mm] SIM focus pos	-0.782348	-0.7809083437167272	CCD S1 on	N	N
[mm] SIM defocus	0	0.001439871863259334	CCD S2 on	O1	Y
[mm] SIM translation stage pos	-233.592463	-233.5874344608287	CCD S3 on	O2	Y
[mm] SIM translation stage offset	0	-0.005018542100998502	CCD S4 on	N	N
[s] Observation start time (MET)	428274525.184000	428273143.53699	CCD S5 on	N	N
Observation start date	2011-07-28T21:07:39	2011-07-28T20:45:43	Number of optional ACIS chips dropped	0	0
[s] Observation end time (MET)	428304525.184000	428304859.08865	On-chip summing requested	N	N
Observation end date	2011-07-29T05:27:39	2011-07-29T05:34:19	Subarray requested	NONE	NONE
Read mode	TIMED	TIMED	Alternating exposures requested	N	N
			[s] Primary exposure time	0.000000	3.2

2.3 Aspect



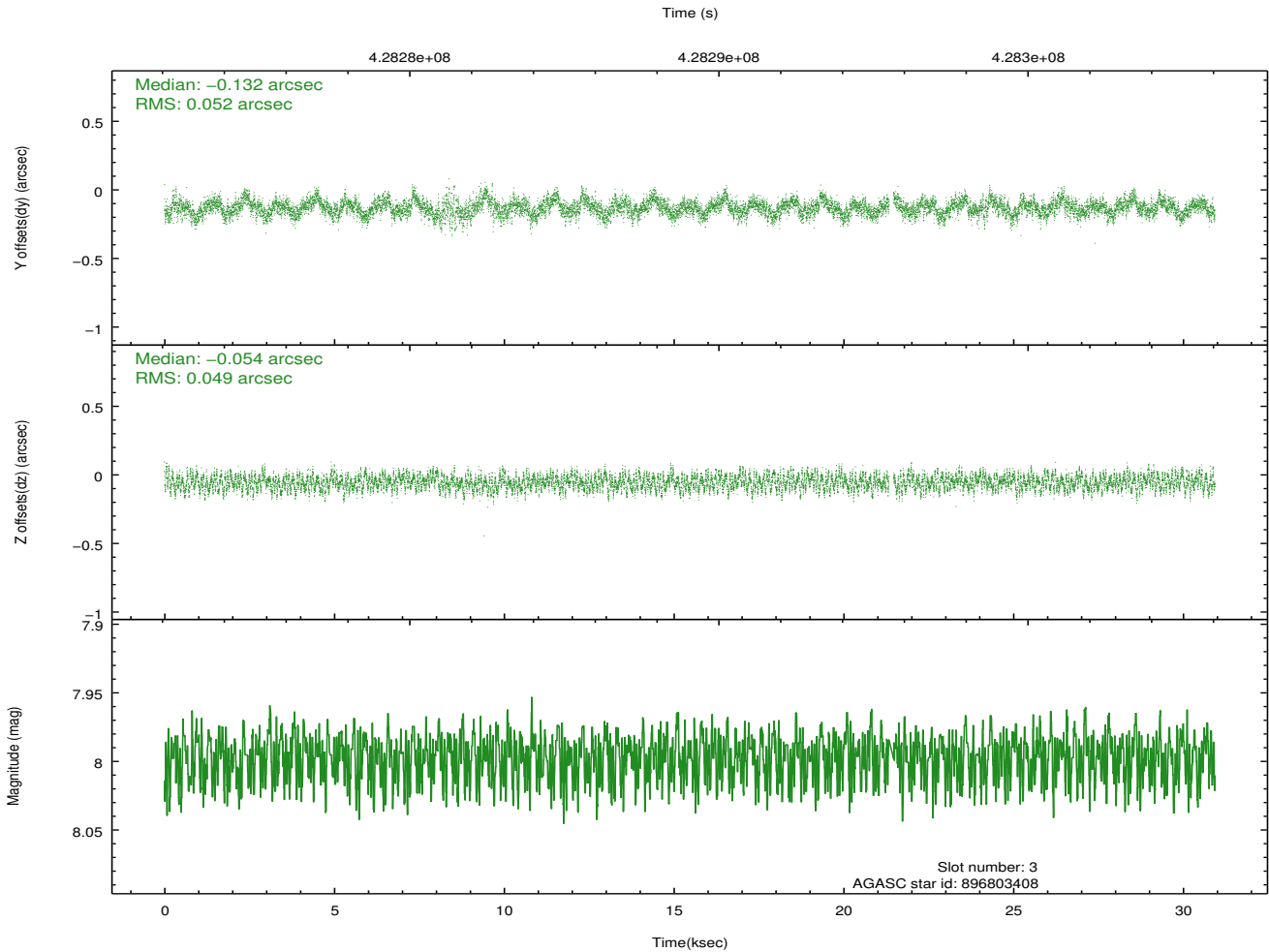
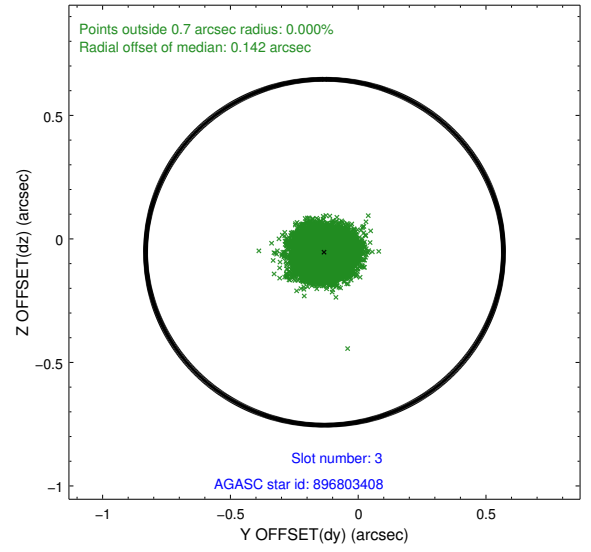
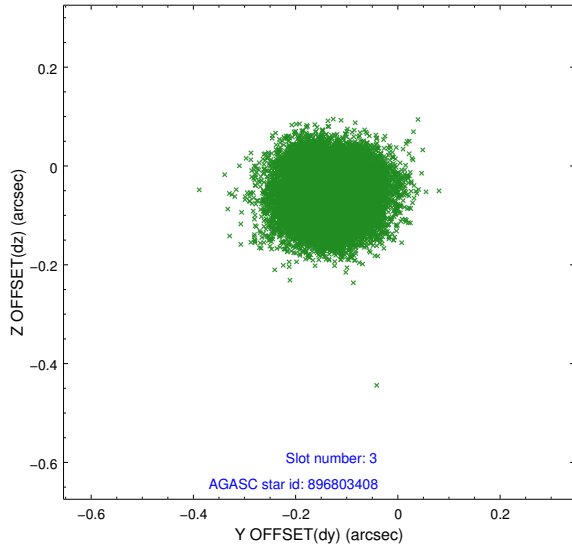


Slot Statistics

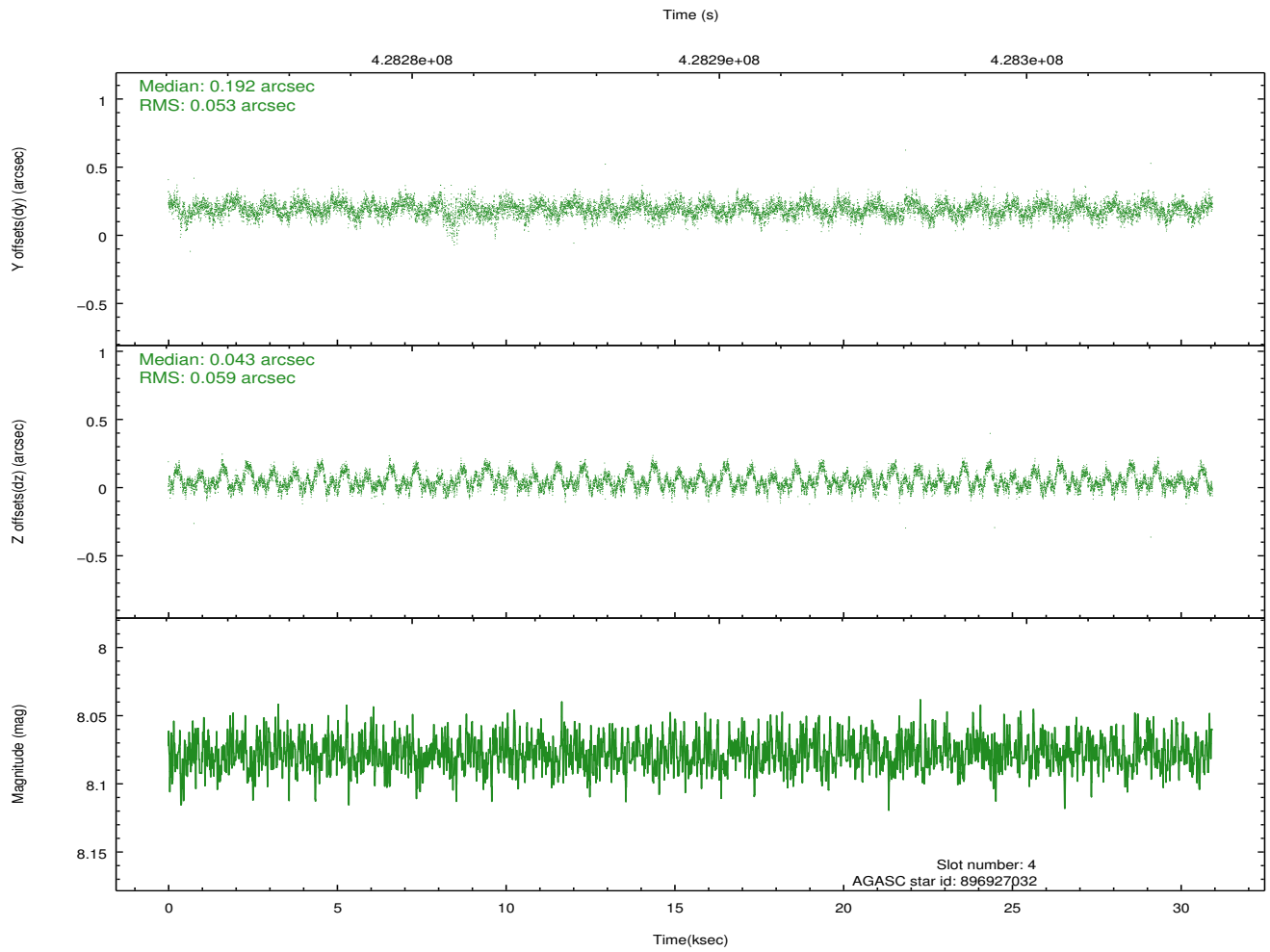
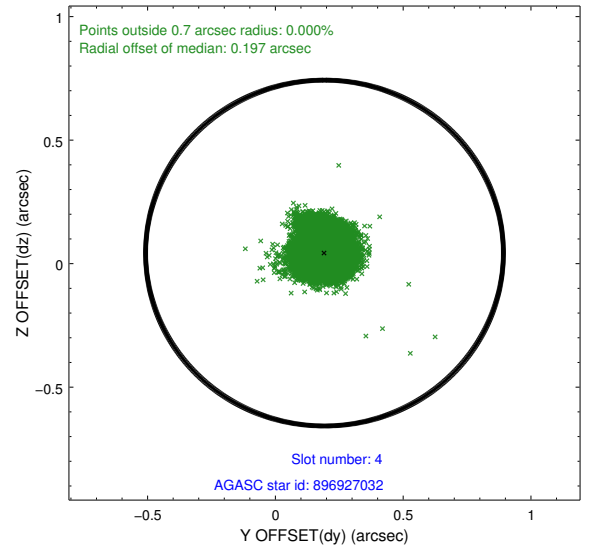
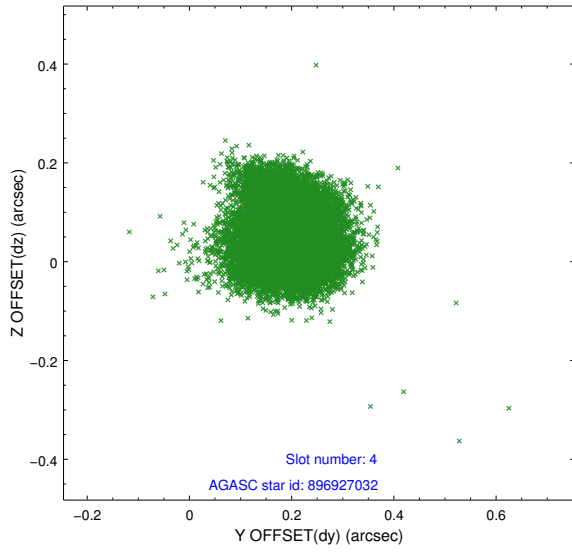
slot	status	id	mag	n_pts	med_dy	med_dz	dr1	dr2	ra	dec	mean_y	mean_z
0	FID	ACIS-I-1	7.16	7546	0.118	-0.115	0.007	0.013	0.000000	0.000000	932.31	-834.82
1	FID	ACIS-I-5	7.15	7546	-0.251	0.097	0.007	0.012	0.000000	0.000000	-1816.13	1062.84
2	FID	ACIS-I-6	7.15	7545	0.042	0.088	0.007	0.012	0.000000	0.000000	397.70	1707.42
3	GUIDE	896803408	8.00	15021	-0.132	-0.054	0.078	0.121	271.939176	-23.105136	-1566.69	-1712.46
4	GUIDE	896927032	8.08	15083	0.192	0.043	0.085	0.135	272.416089	-23.926857	1421.73	-195.93
5	GUIDE	896930040	7.68	15089	0.162	0.068	0.069	0.116	272.323751	-23.988402	1637.10	-504.14
6	GUIDE	896939984	7.67	15089	-0.073	-0.022	0.070	0.111	272.784593	-23.351112	-623.28	1065.50
7	GUIDE	896805472	8.41	15088	-0.152	-0.042	0.066	0.105	271.805496	-23.065848	-1715.99	-2152.50

2.4 Star Slots

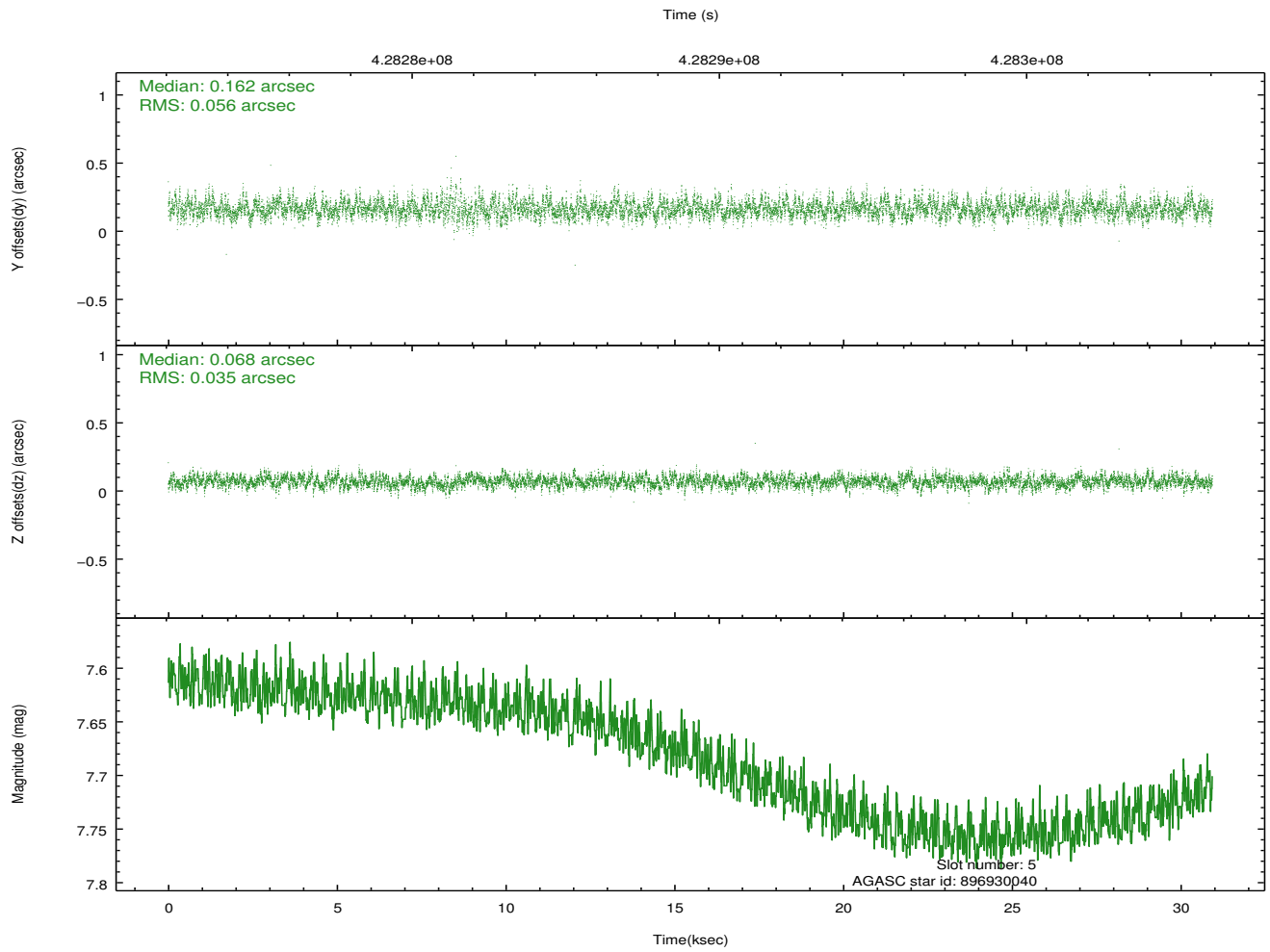
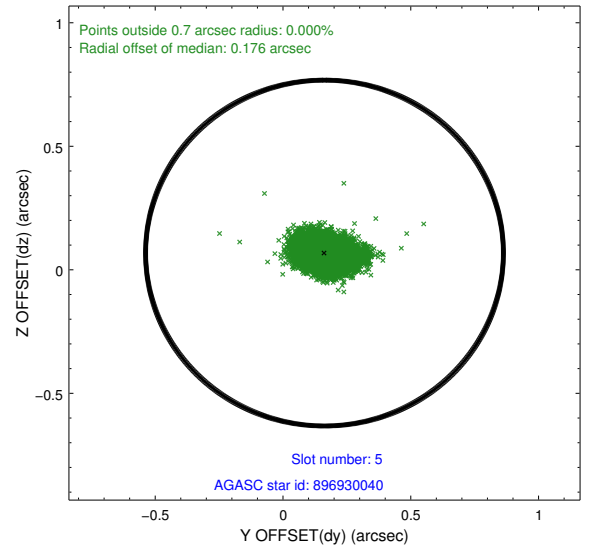
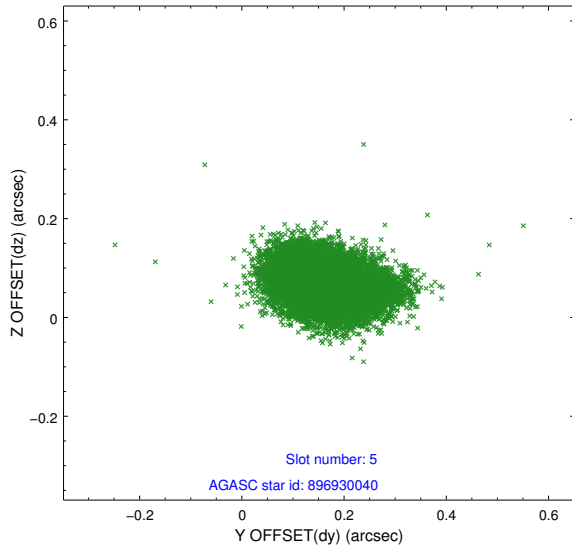
2.4.1 Slot 3



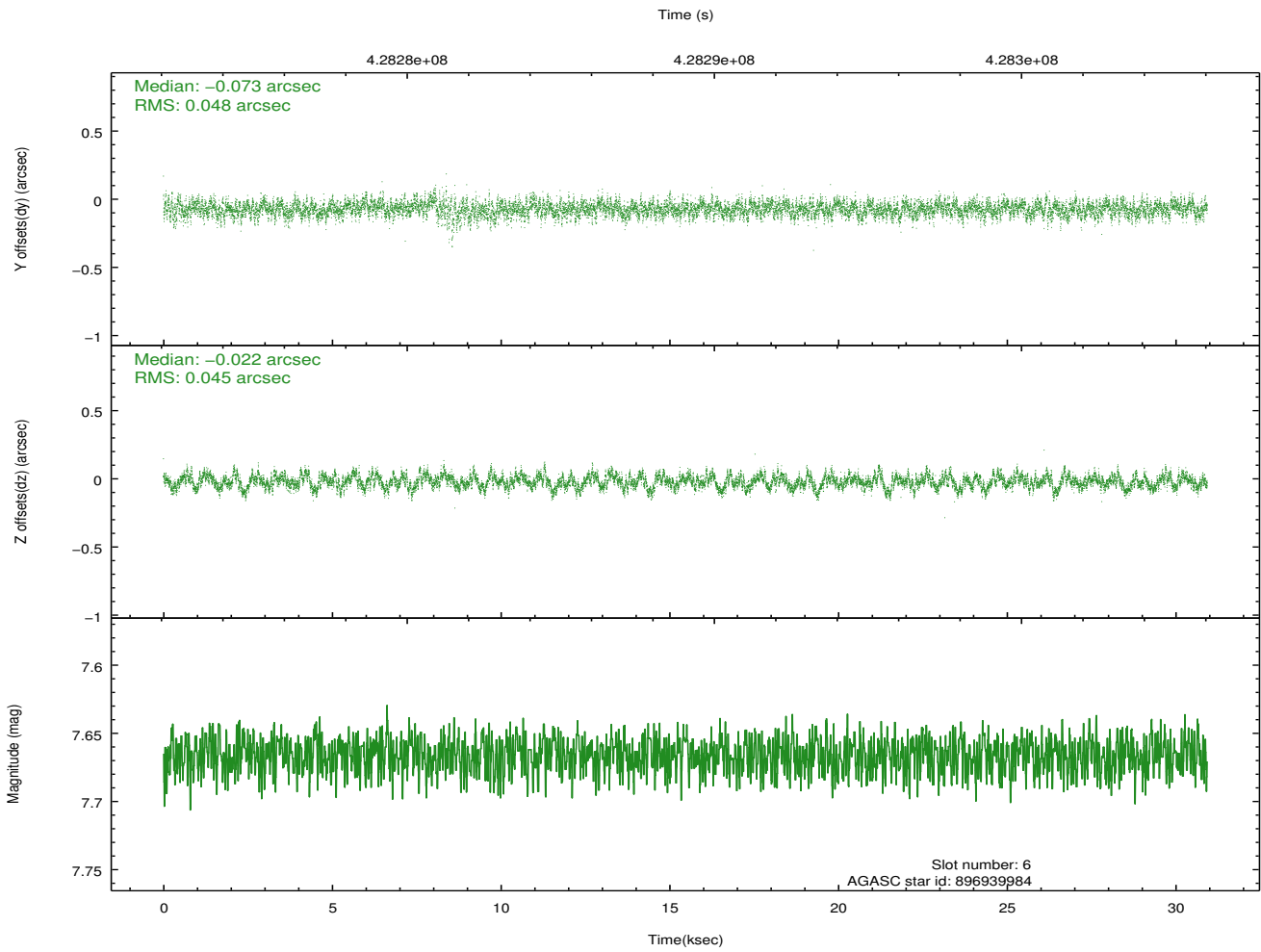
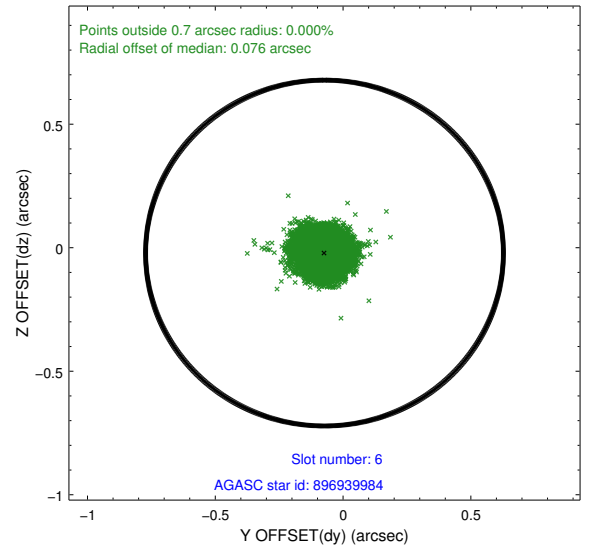
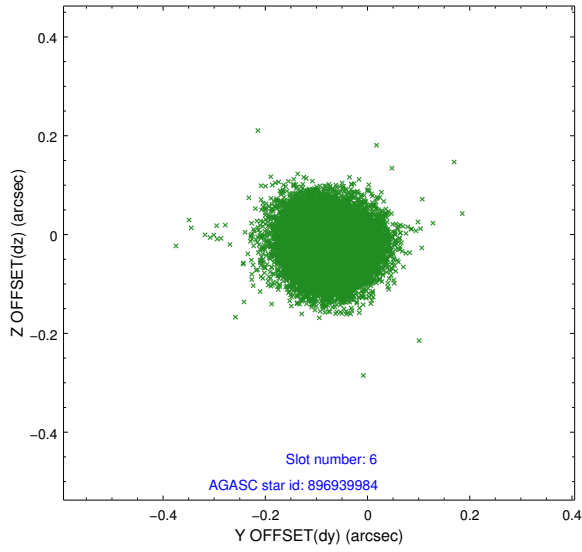
2.4.2 Slot 4



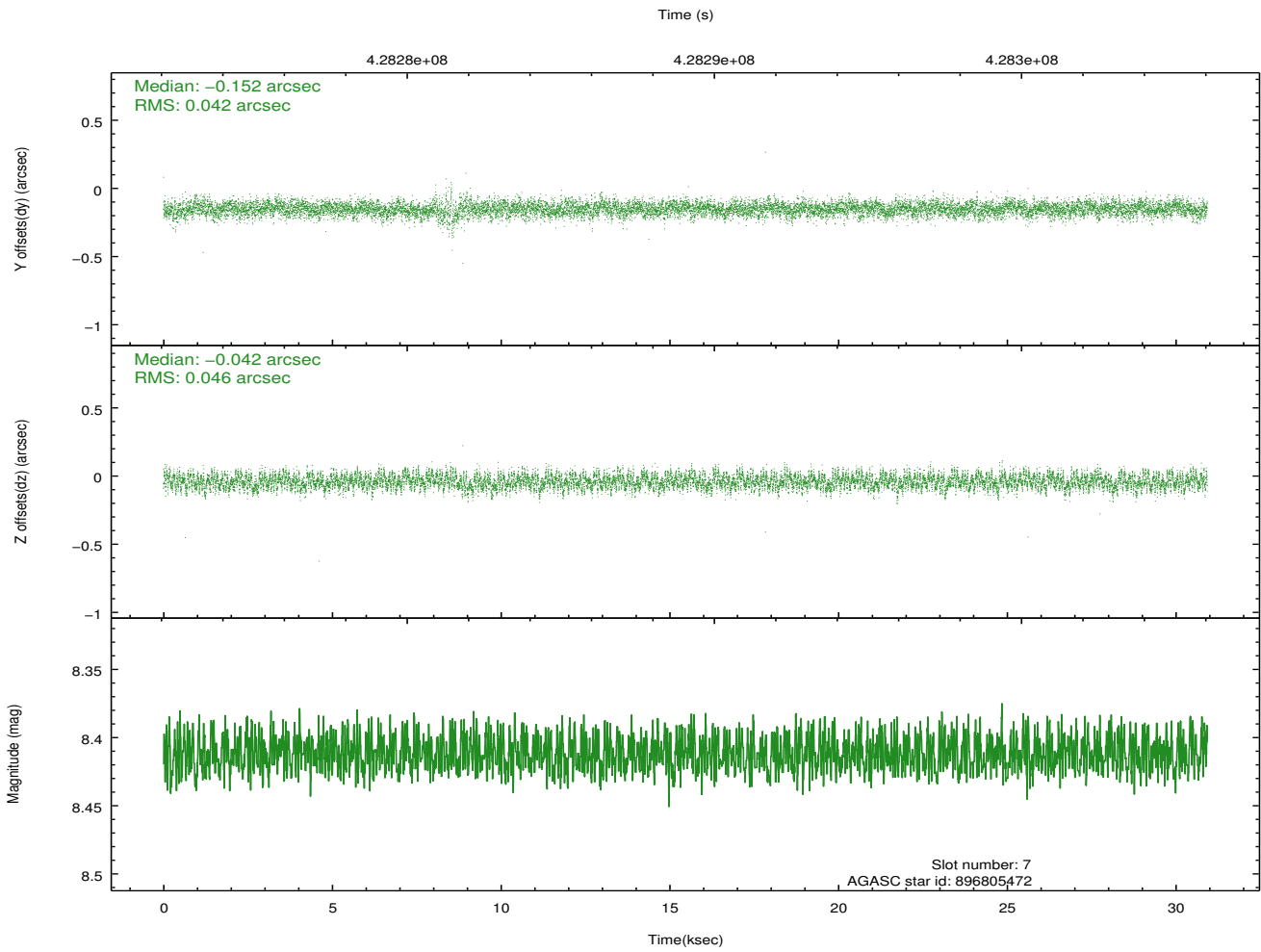
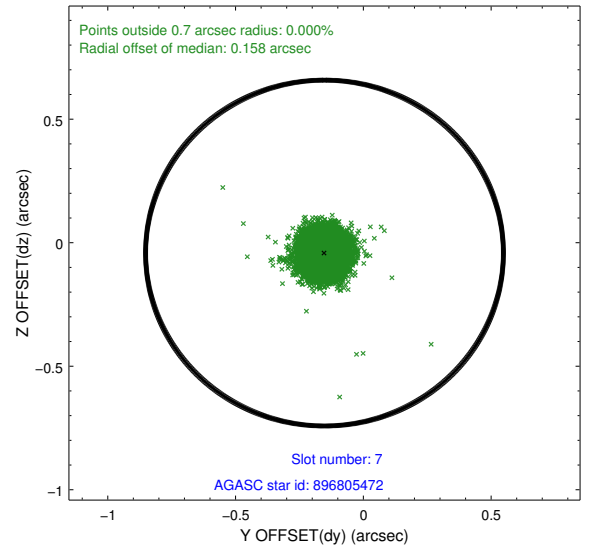
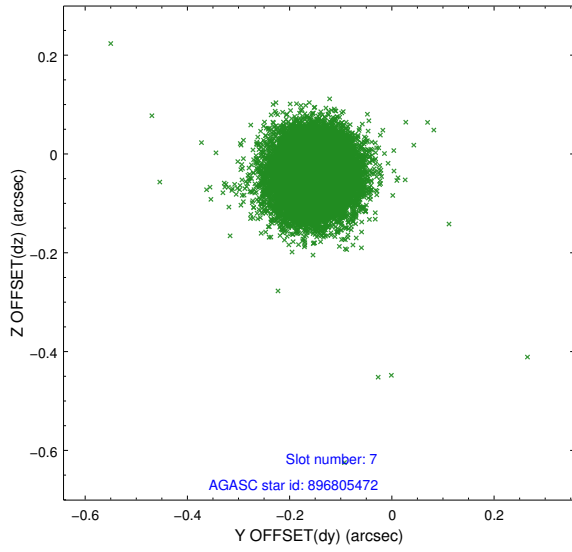
2.4.3 Slot 5



2.4.4 Slot 6

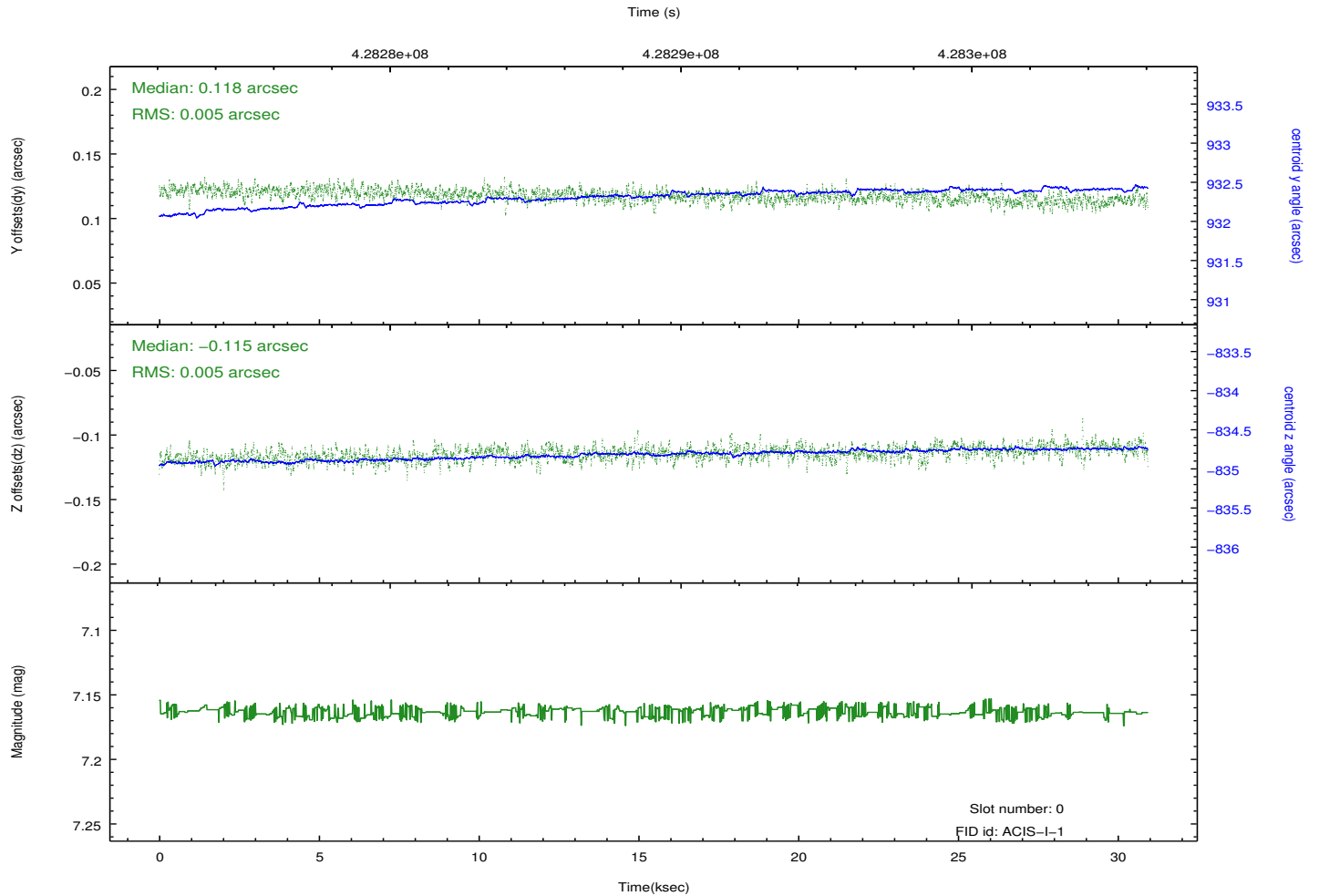
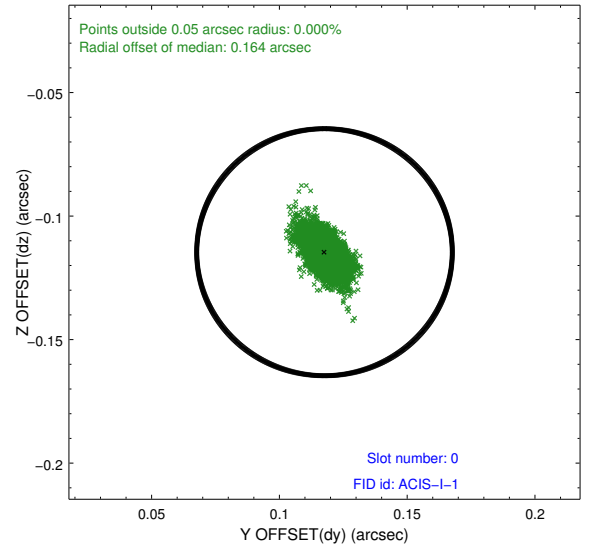
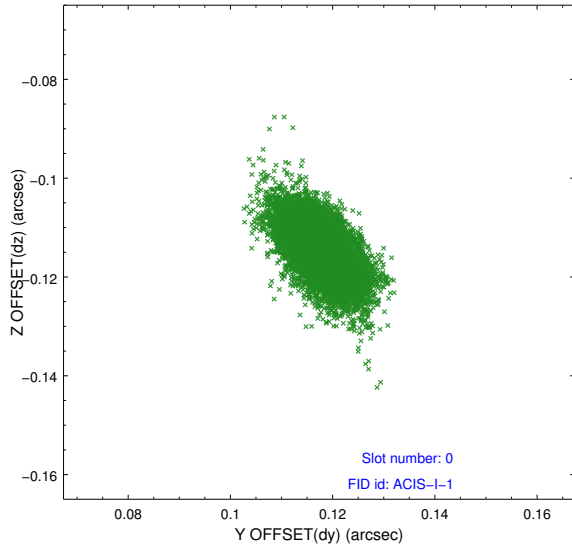


2.4.5 Slot 7

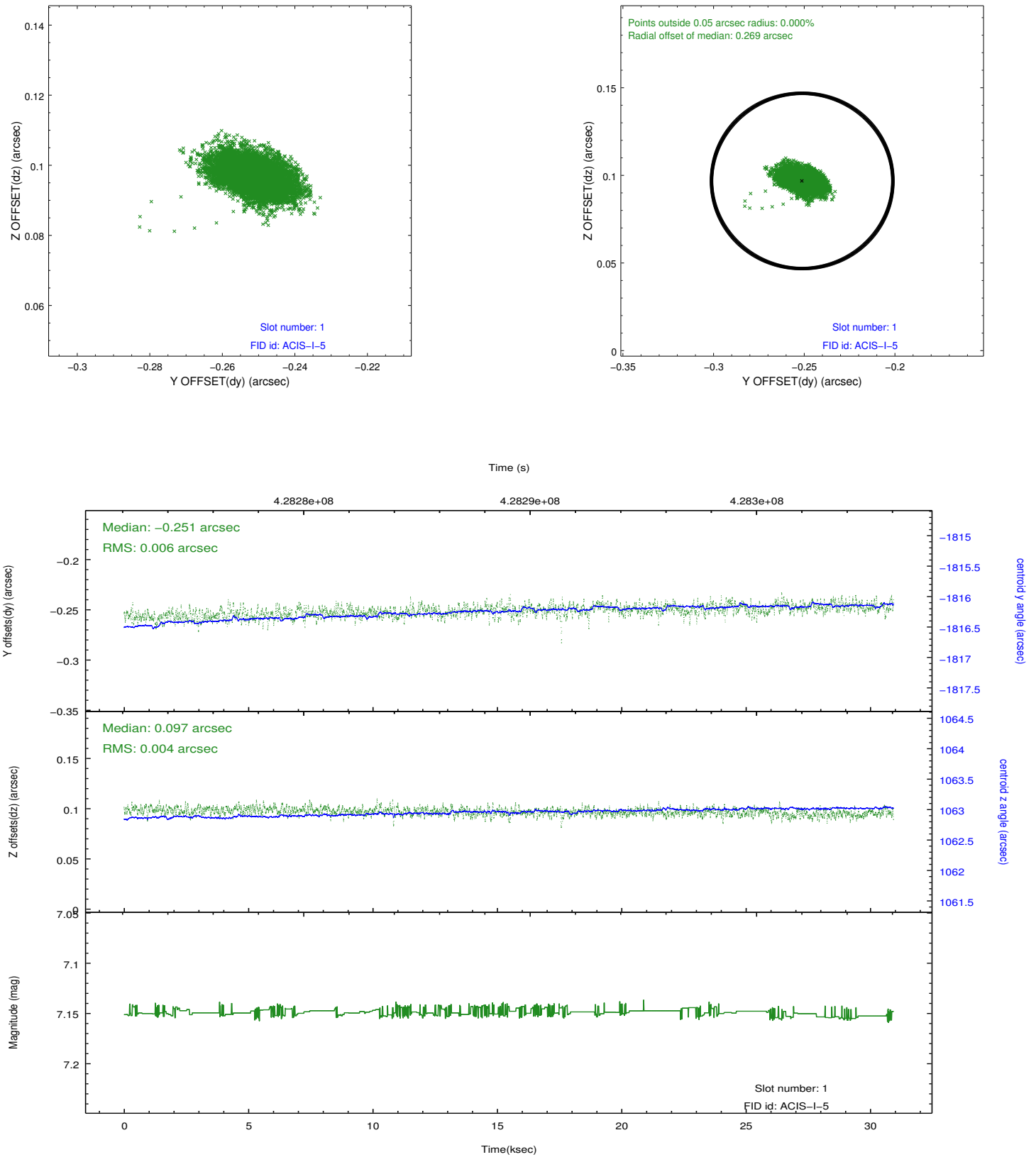


2.5 FID Slots

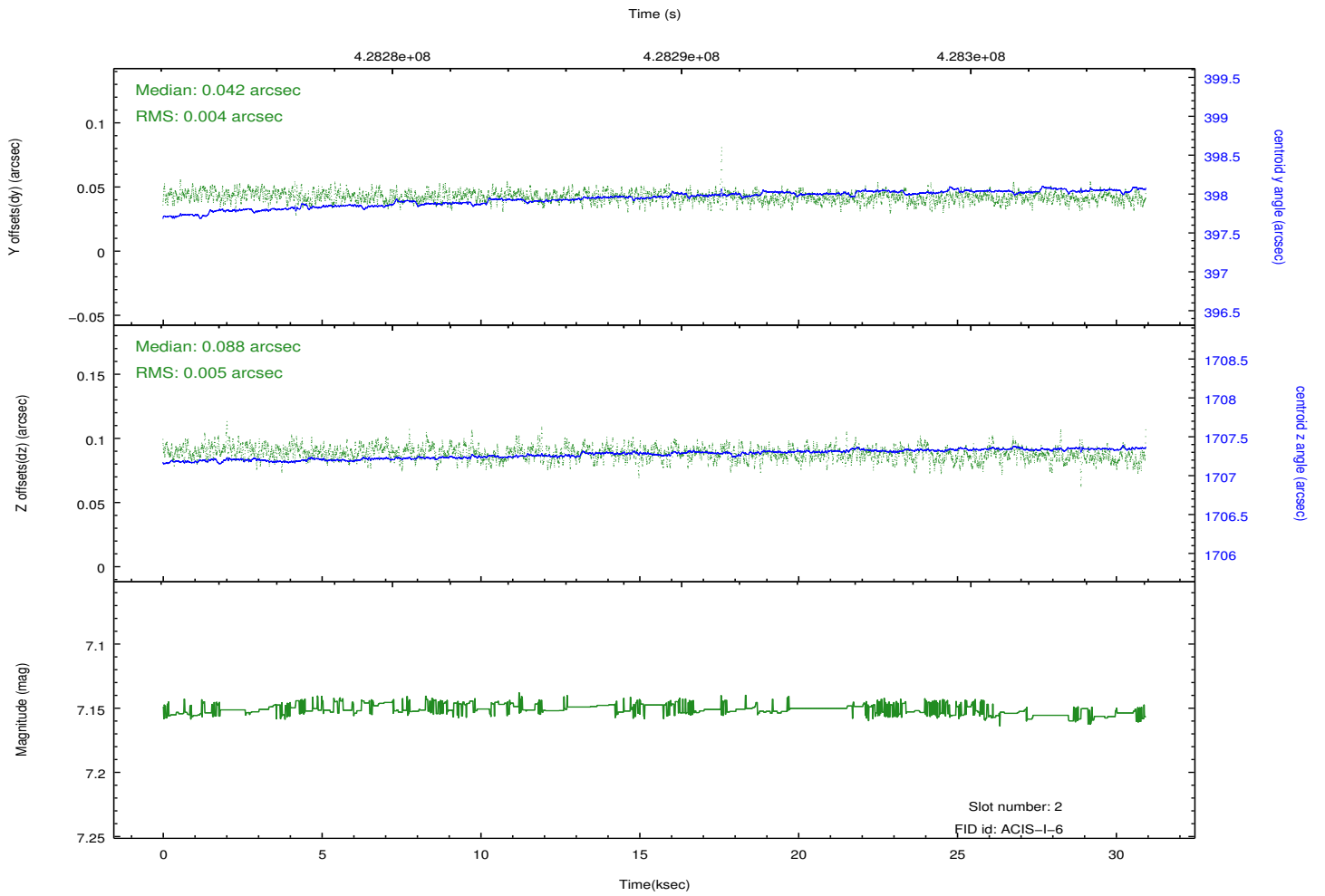
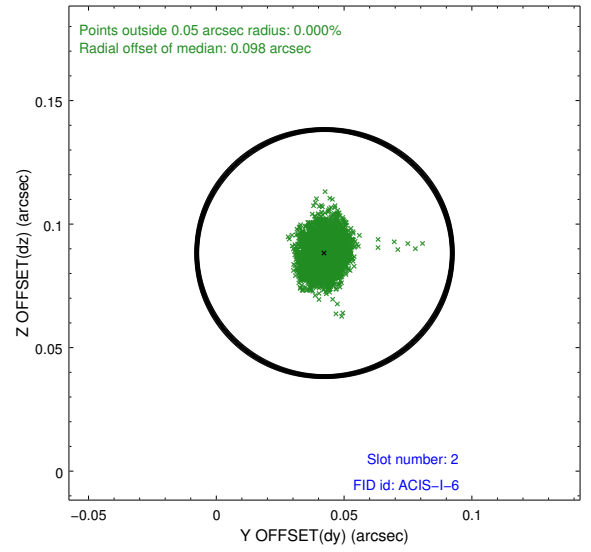
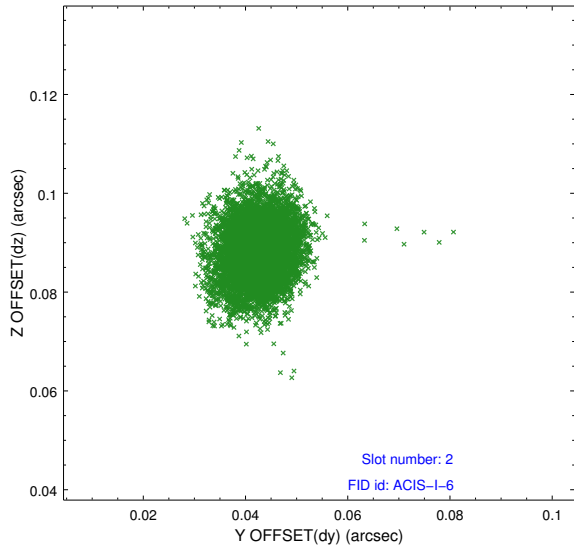
2.5.1 Slot 0



2.5.2 Slot 1



2.5.3 Slot 2



A Summary

A.1 Status

V&V Scientist	Jen Lauer
V&V Date (YYYY-MM-DD)	2012.02.21
V&V Edition	1
V&V Disposition and Status	OK
V&V Charge Time	30.056762665749

A.2 Comments

Preferred roll constraint is 265 +/- 5 degrees. Actual roll is 271.45 degrees.