

V&V Reference Report

L2 ASCDS Version : 8.4.3

Observation 12556 - L2 Version 2
Chandra X-Ray Center

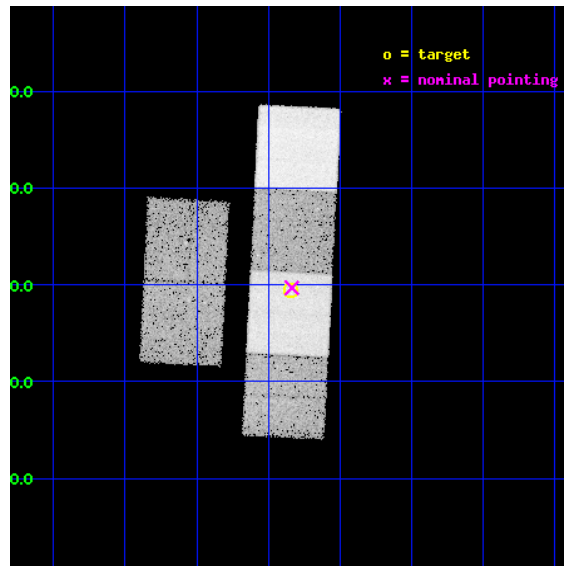
L2 Processing Date : Feb 6 2012

Contents

1	Front	2
2	OBI	3
2.1	OBI	3
2.1.1	Images	3
2.1.2	Bias	3
2.1.3	Parameters	4
2.1.4	Events	4
2.2	Compared Parameters	5
2.3	Aspect	6
2.4	Star Slots	9
2.4.1	Slot 3	9
2.4.2	Slot 4	10
2.4.3	Slot 5	11
2.4.4	Slot 6	12
2.4.5	Slot 7	13
2.5	FID Slots	14
2.5.1	Slot 0	14
2.5.2	Slot 1	15
2.5.3	Slot 2	16
A	Summary	17
A.1	Status	17
A.2	Comments	17

1 Front

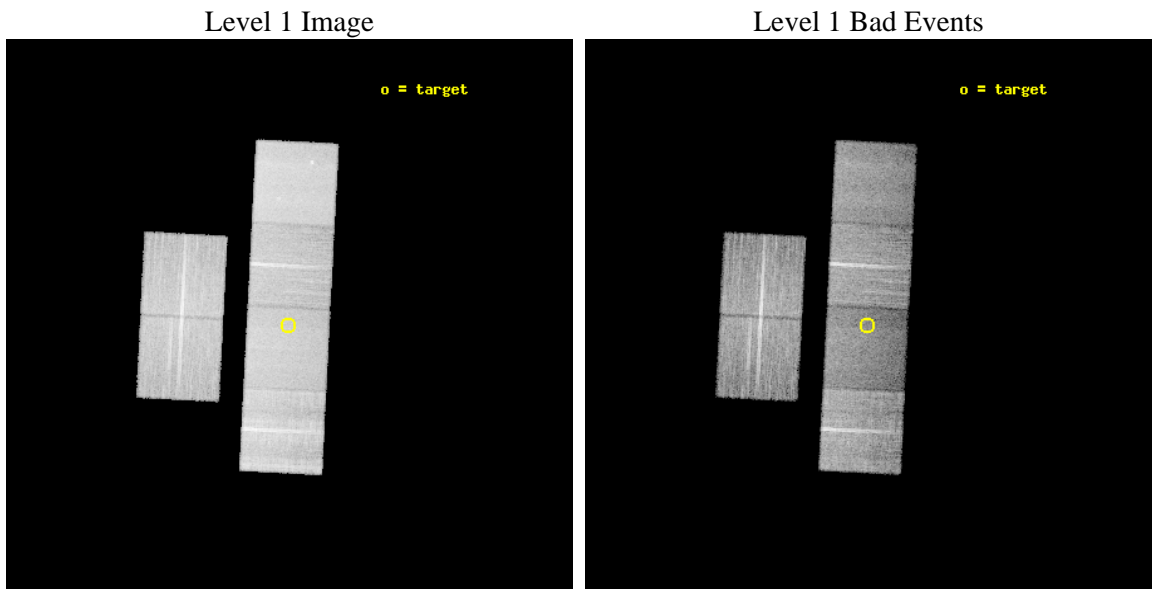
seq_num	501389	Sequence number
obs_id	12556	Observation id
title	PSRJ 1832+0029: a unique target for pulsar emission physics	Propos
observer	Prof Duncan Lorimer	Principal investigator
object	J1832+0032	Source name
dtcycle	0	
cycle	P	events from which exps? Prim/Second/Both
ra_targ	278.211667	Observer's specified target RA [deg]
dec_targ	0.490889	Observer's specified target Dec [deg]
ra_nom	278.2089091822	Nominal RA [deg]
dec_nom	0.4948798787722	Nominal Dec [deg]
roll_nom	92.926441281462	Nominal Roll [deg]
revision	2	Processing version of data
ontime	23046.399914205	Sum of GTIs [s]
livetime	22754.572521615	Livetime [s]
ontime2	23043.15891397	Sum of GTIs [s]
ontime3	23046.399914205	Sum of GTIs [s]
ontime5	23046.399914205	Sum of GTIs [s]
ontime6	23046.399914205	Sum of GTIs [s]
ontime7	23046.399914205	Sum of GTIs [s]
ontime8	23043.159053326	Sum of GTIs [s]
l2events	227617	Number of level 2 events



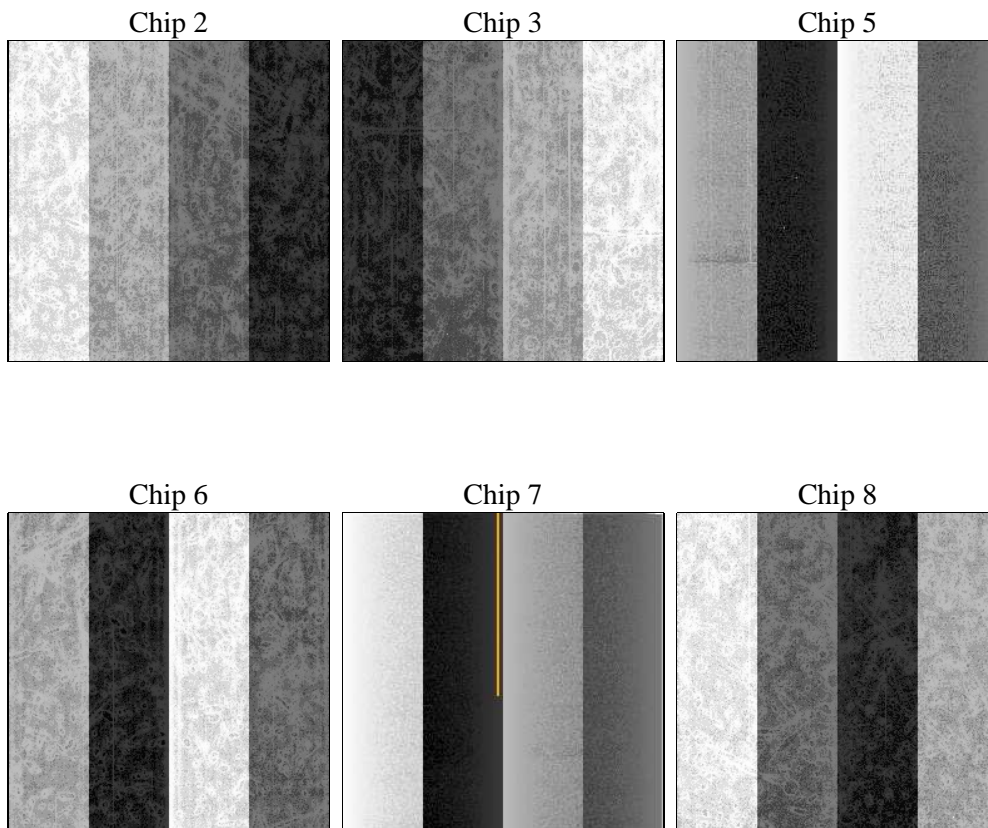
2 OBI

2.1 OBI

2.1.1 Images



2.1.2 Bias



2.1.3 Parameters

obi_num	0	Obi number	sched_exp_time	23000.000000	[s] Scheduled observation exposure time
ascdsver	8.4.3	Processing system revision	ontime	23046.399914205	Sum of GTIs [s]
caldbver	4.4.7	 	ontime2	23043.15891397	Sum of GTIs [s]
date	2012-02-06T22:20:52	Date and time of file creation	ontime3	23046.399914205	Sum of GTIs [s]
revision	2	Processing version of data	ontime5	23046.399914205	Sum of GTIs [s]
			ontime6	23046.399914205	Sum of GTIs [s]
			ontime7	23046.399914205	Sum of GTIs [s]
			ontime8	23043.159053326	Sum of GTIs [s]
			l1events	963900	Number of level 1 events

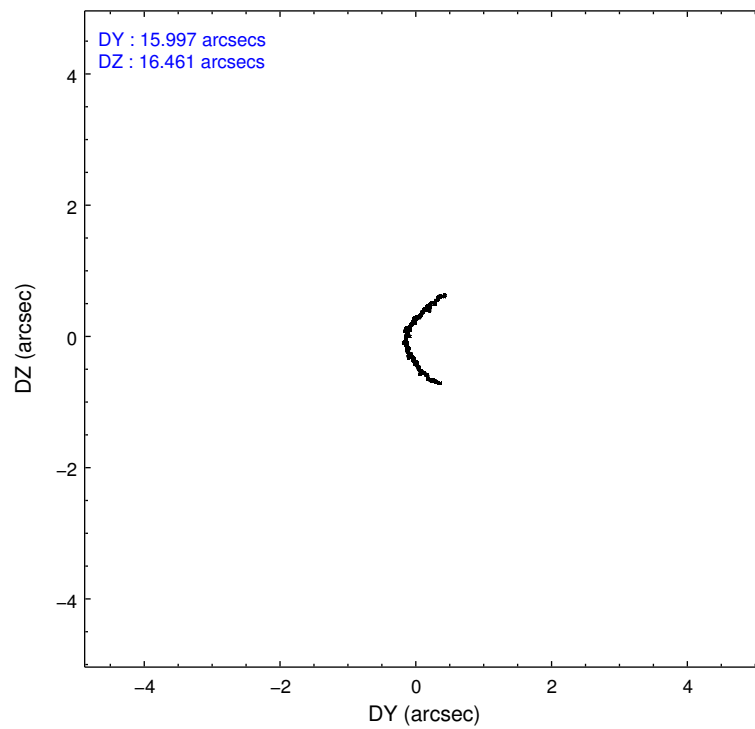
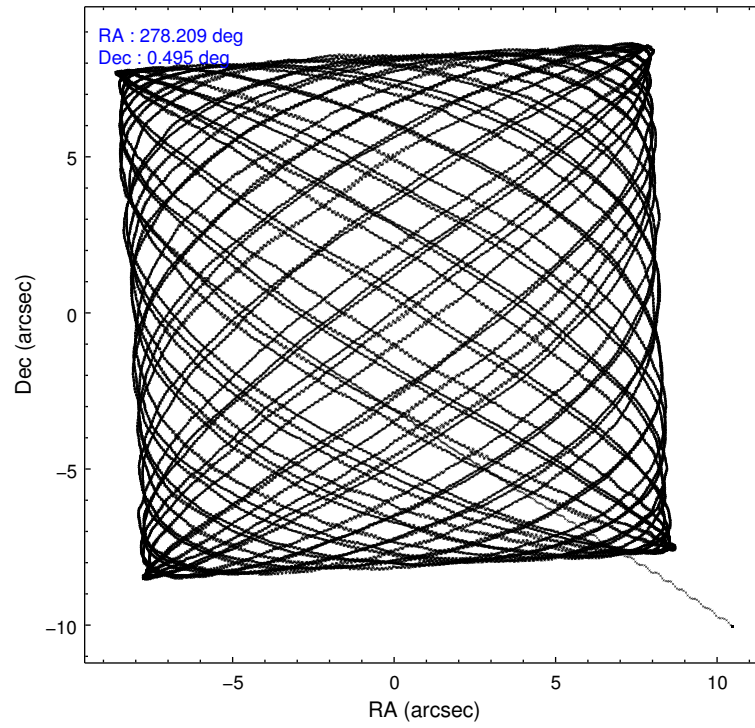
2.1.4 Events

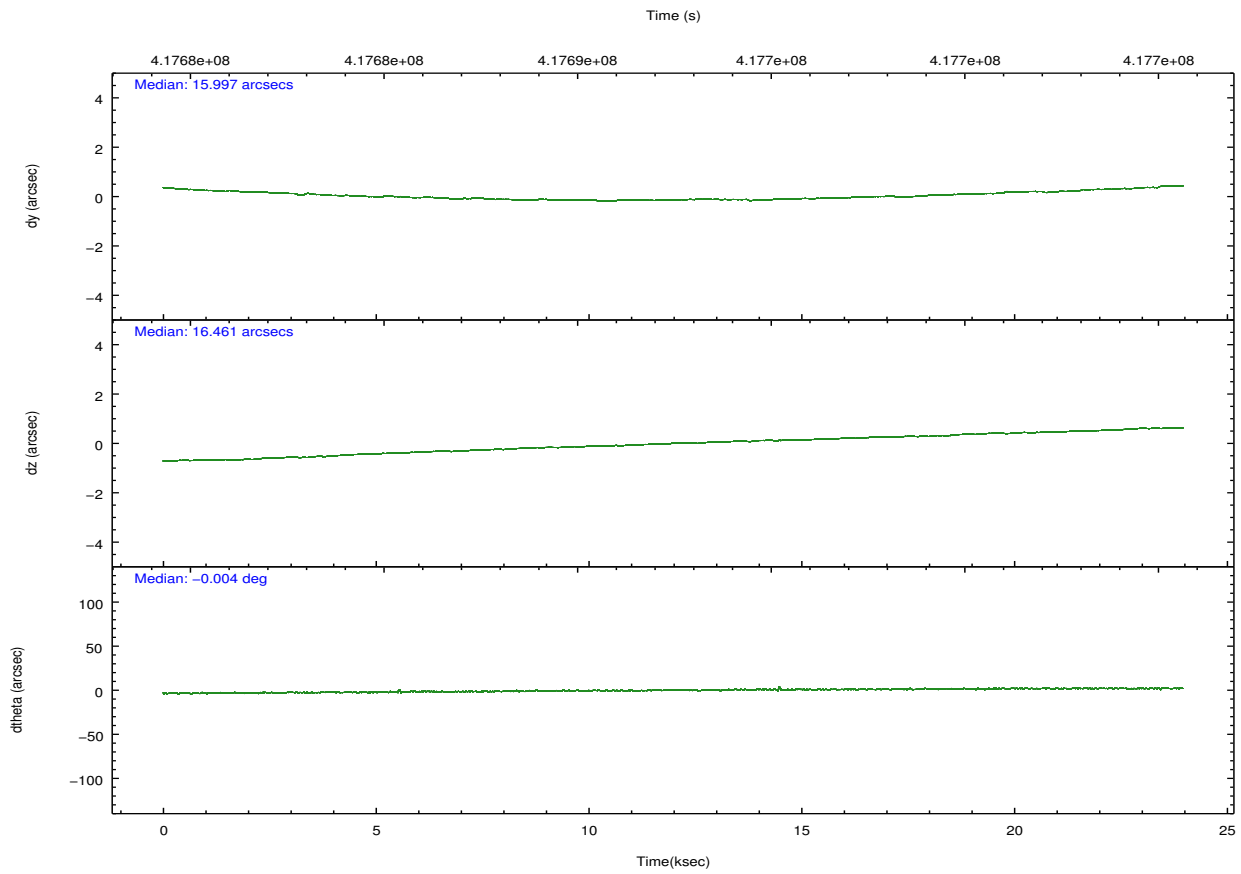
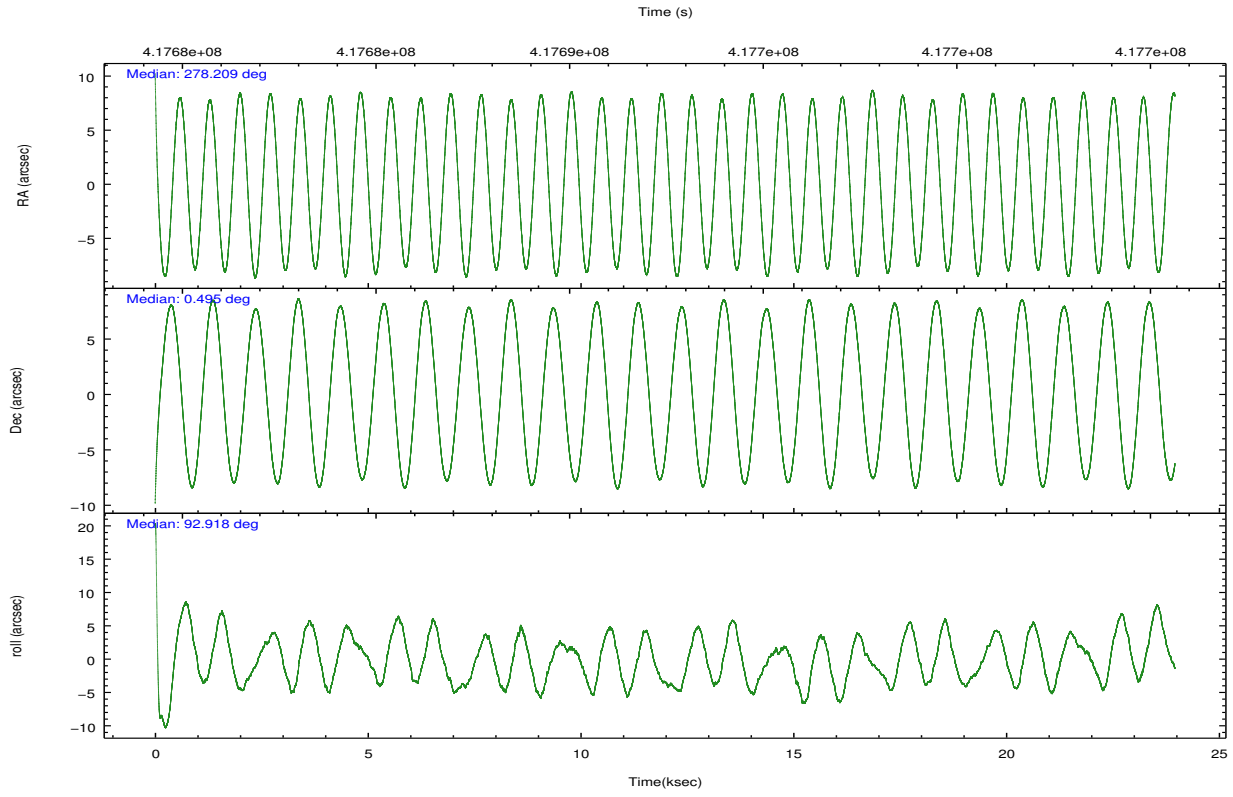
	ccd 2	ccd 3	ccd 5	ccd 6	ccd 7	ccd 8		ccd 2	ccd 3	ccd 5	ccd 6	ccd 7	ccd 8
level 1 events	147569	136834	198996	141811	154692	183998	grade 0 events	5489	5328	7301	5655	7479	13553
rejected events	132216	122094	96595	125724	79649	134521		3%	3%	3%	3%	4%	7%
rejected %	89%	89%	48%	88%	51%	73%	grade 1 events	106	87	380	64	247	140
								0%	0%	0%	0%	0%	0%
							grade 2 events	3871	3306	32354	3684	16019	11877
								2%	2%	16%	2%	10%	6%
							grade 3 events	1599	1648	4242	1682	6855	5422
								1%	1%	2%	1%	4%	2%
							grade 4 events	1559	1609	4149	1722	6669	4991
								1%	1%	2%	1%	4%	2%
							grade 5 events	4901	5729	16260	5638	16577	8594
								3%	4%	8%	3%	10%	4%
							grade 6 events	2837	2858	54385	3349	38046	13650
								1%	2%	27%	2%	24%	7%
							grade 7 events	127207	116269	79925	120017	62800	125771
								86%	84%	40%	84%	40%	68%

2.2 Compared Parameters

Parameter	Planned	Actual	Parameter	Planned	Actual
Instrument	ACIS	ACIS	Obspar format version number	7	7
Detector	ACIS-235678	ACIS-235678	Obspar file type	PREDICTED	ACTUAL
Grating	NONE	NONE	Obspar update status	NONE	UPDATED
Data mode	VFAINT	VFAINT	CCD I0 on	N	N
Observation mode	POINTING	POINTING	CCD I1 on	N	N
[deg] Pointing RA	278.224091	278.2089091822017	CCD I2 on	Y	Y
[deg] Pointing Dec	0.472139	0.4948798787721957	CCD I3 on	Y	Y
[deg] Pointing Roll	92.769668	92.92644128146205	CCD S0 on	N	N
[mm] SIM focus pos	-0.684267	-0.6828225247311905	CCD S1 on	O1	Y
[mm] SIM defocus	0	0.001444936568705701	CCD S2 on	Y	Y
[mm] SIM translation stage pos	-190.132523	-190.1400660498719	CCD S3 on	Y	Y
[mm] SIM translation stage offset	0	0.00754346686406393	CCD S4 on	O2	Y
[s] Observation start time (MET)	417681434.184000	417679534.14572	CCD S5 on	N	N
Observation start date	2011-03-28T06:36:08	2011-03-28T06:05:34	Number of optional ACIS chips dropped	0	0
[s] Observation end time (MET)	417704434.184000	417705135.05955	On-chip summing requested	N	N
Observation end date	2011-03-28T12:59:28	2011-03-28T13:12:15	Subarray requested	NONE	NONE
Read mode	TIMED	TIMED	Alternating exposures requested	N	N
			[s] Primary exposure time	0.000000	3.2

2.3 Aspect



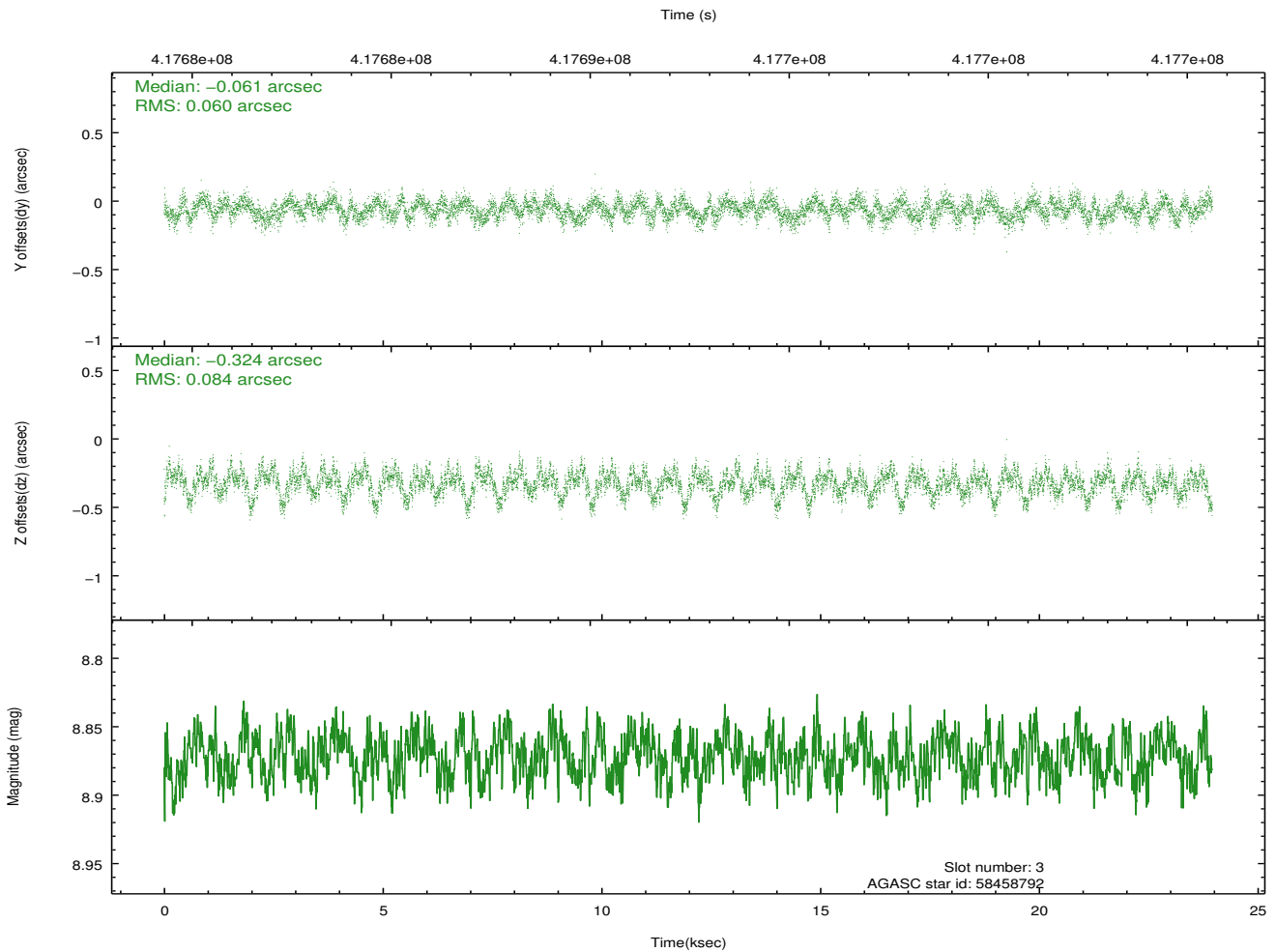
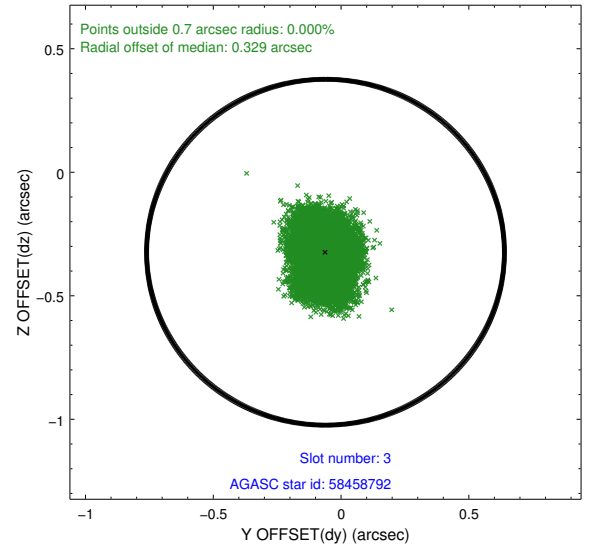
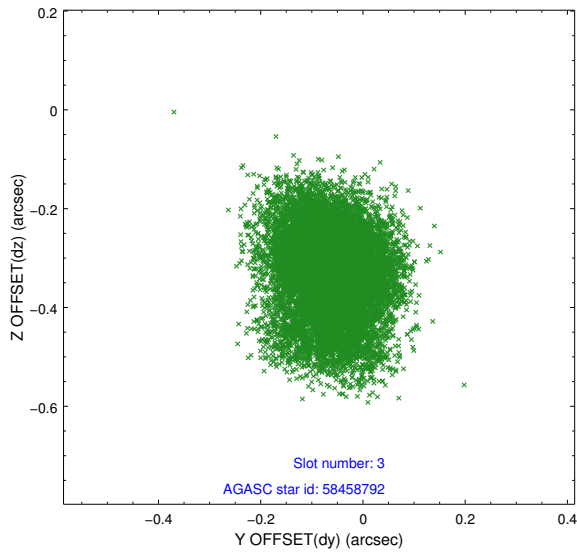


Slot Statistics

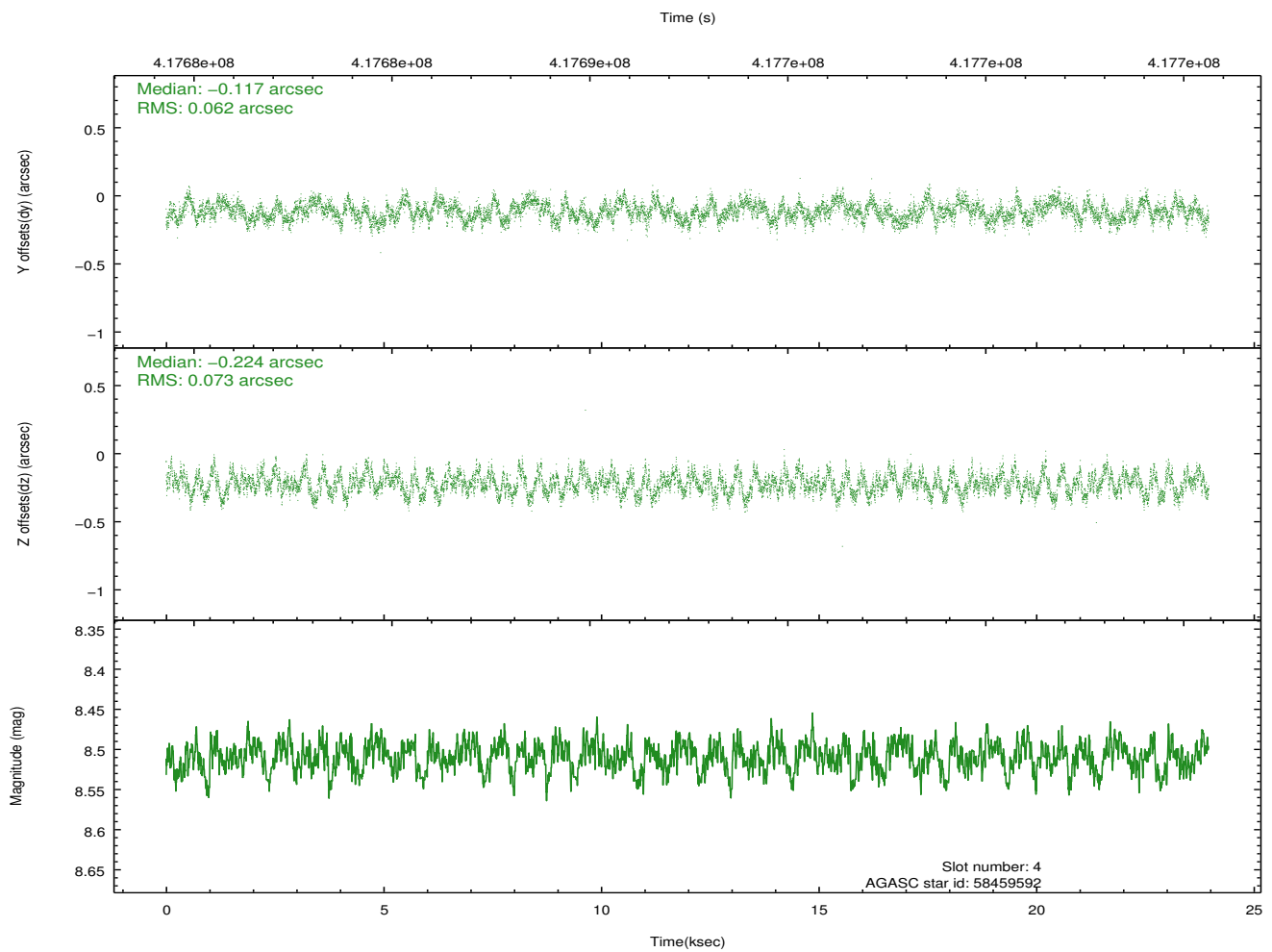
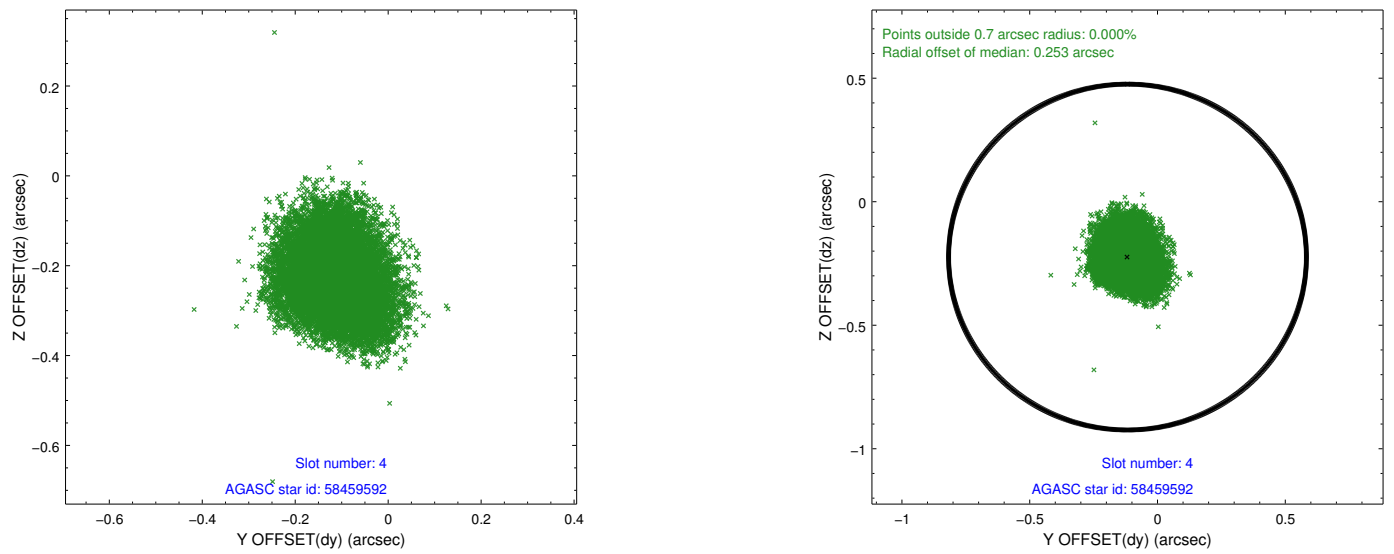
slot	status	id	mag	n_pts	med_dy	med_dz	dr1	dr2	ra	dec	mean_y	mean_z
0	FID	ACIS-S-2	6.93	5845	-0.092	-0.017	0.013	0.023	0.000000	0.000000	-769.14	-1737.86
1	FID	ACIS-S-4	7.01	5845	0.171	0.049	0.008	0.015	0.000000	0.000000	2144.35	170.53
2	FID	ACIS-S-5	7.04	5844	-0.111	-0.023	0.012	0.021	0.000000	0.000000	-1821.82	164.30
3	GUIDE	58458792	8.87	11679	-0.061	-0.324	0.110	0.181	278.171500	0.577532	388.29	170.70
4	GUIDE	58459592	8.51	11687	-0.117	-0.224	0.104	0.161	277.654166	0.379940	-232.44	2065.30
5	GUIDE	58459752	9.71	11678	-0.062	0.309	0.184	0.288	278.755576	0.676218	641.43	-1945.41
6	GUIDE	58460224	8.88	11684	0.043	-0.111	0.102	0.165	277.730600	0.429564	-67.03	1781.57
7	GUIDE	58461392	10.02	11651	0.192	0.354	0.159	0.254	278.854913	0.020871	-1731.65	-2189.41

2.4 Star Slots

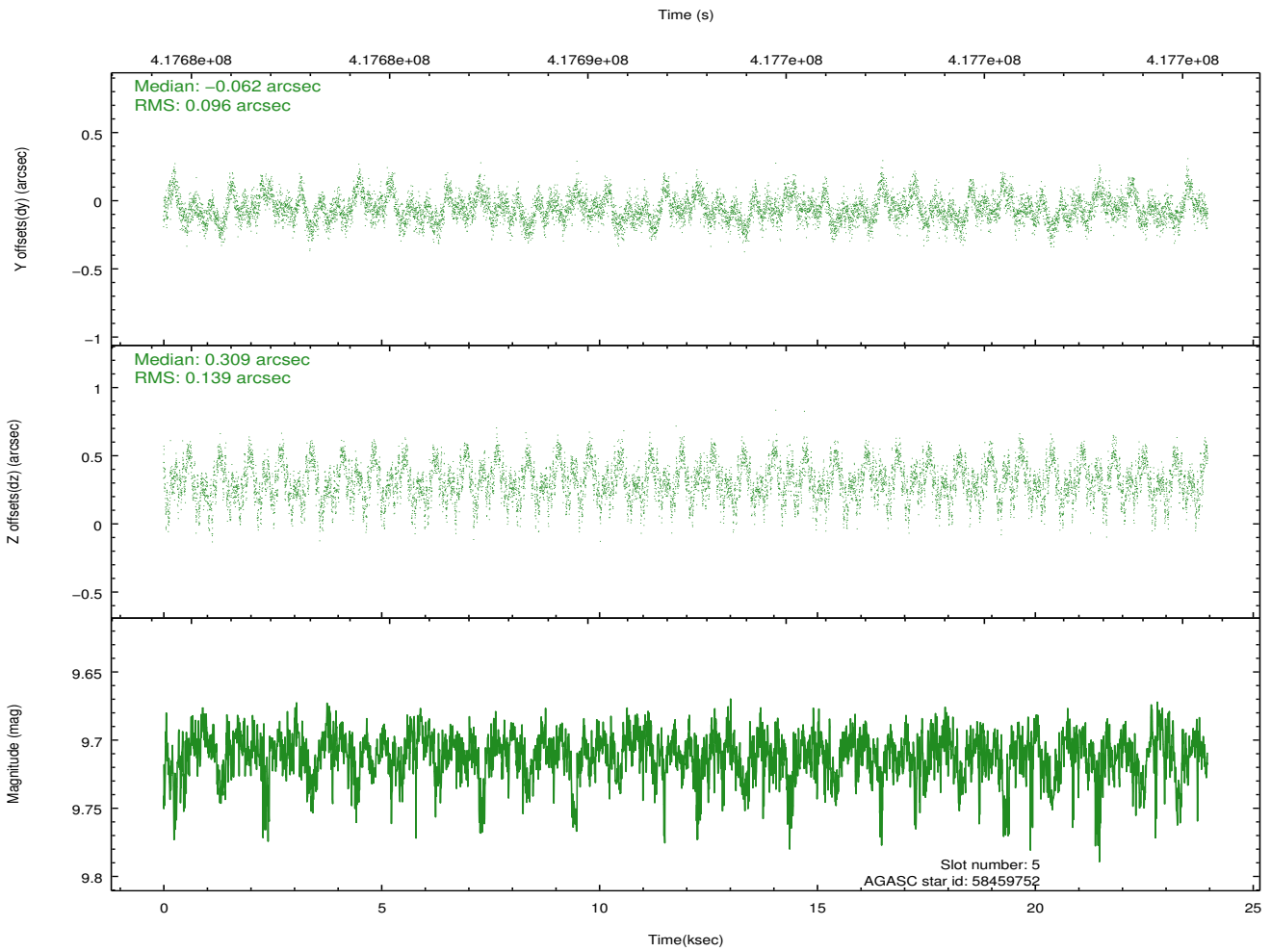
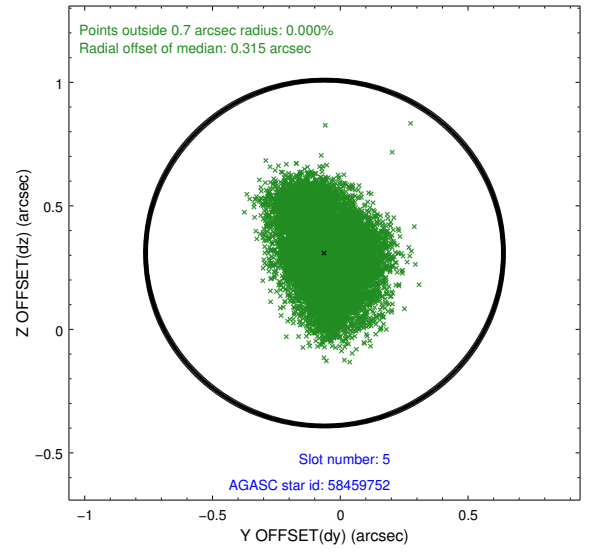
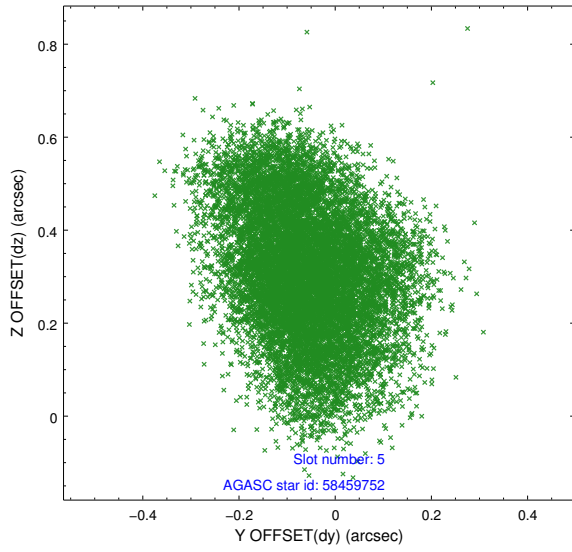
2.4.1 Slot 3



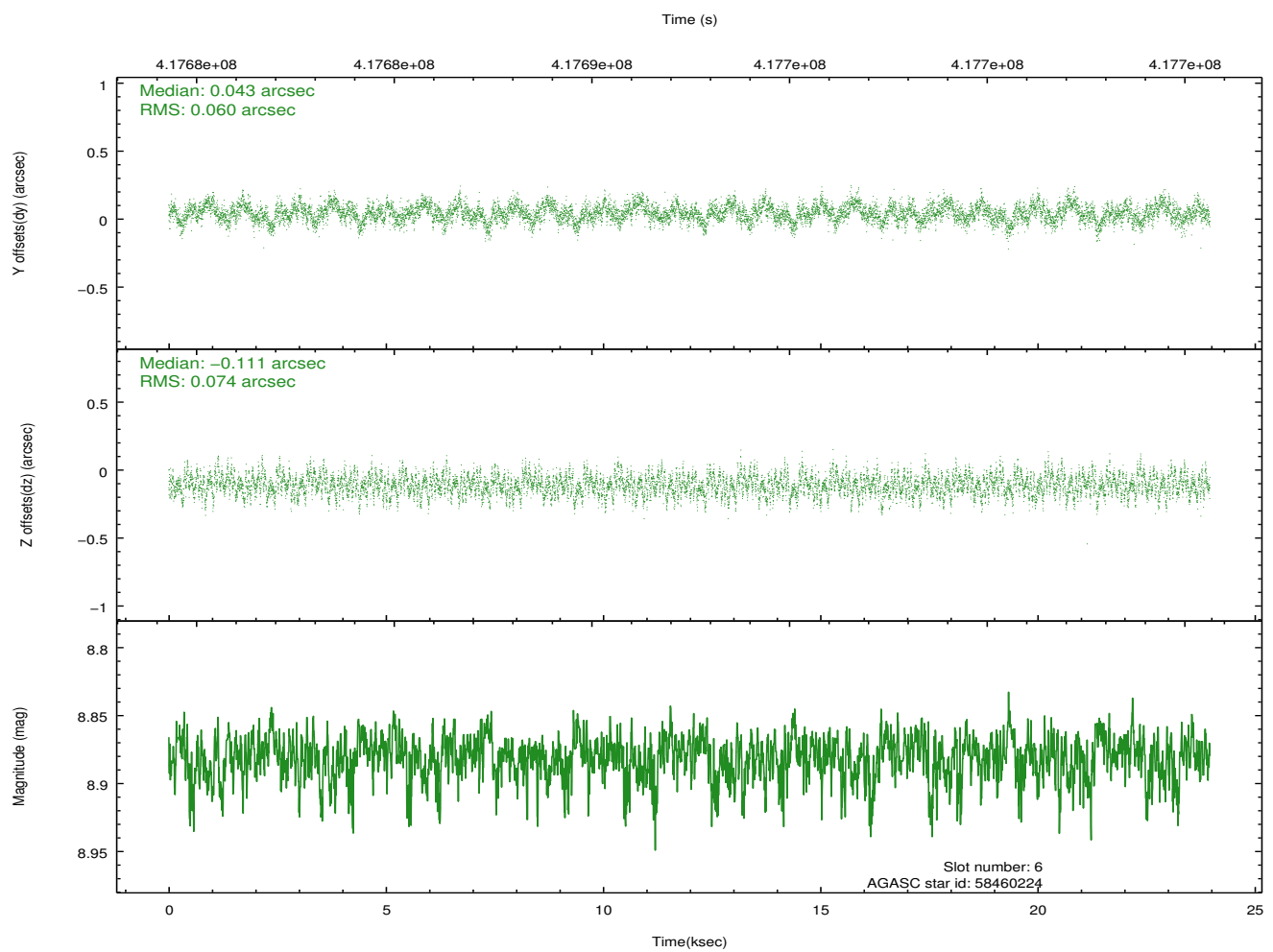
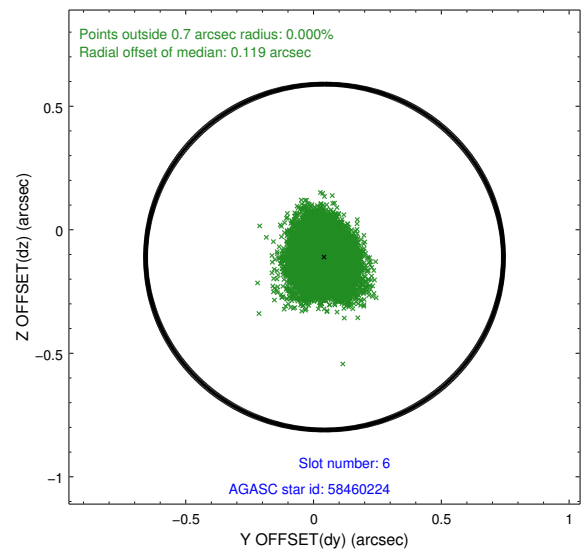
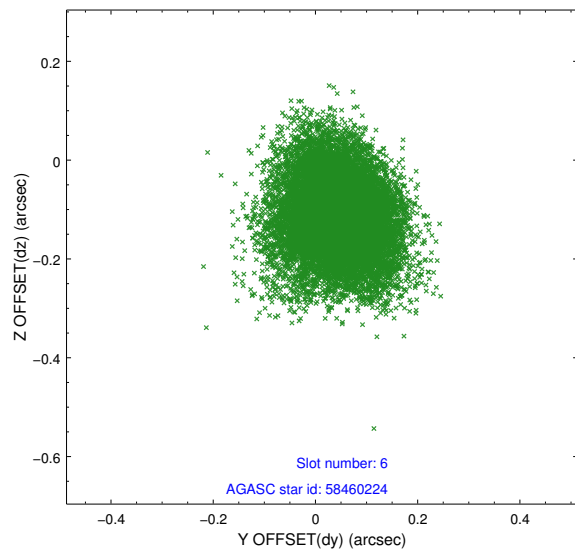
2.4.2 Slot 4



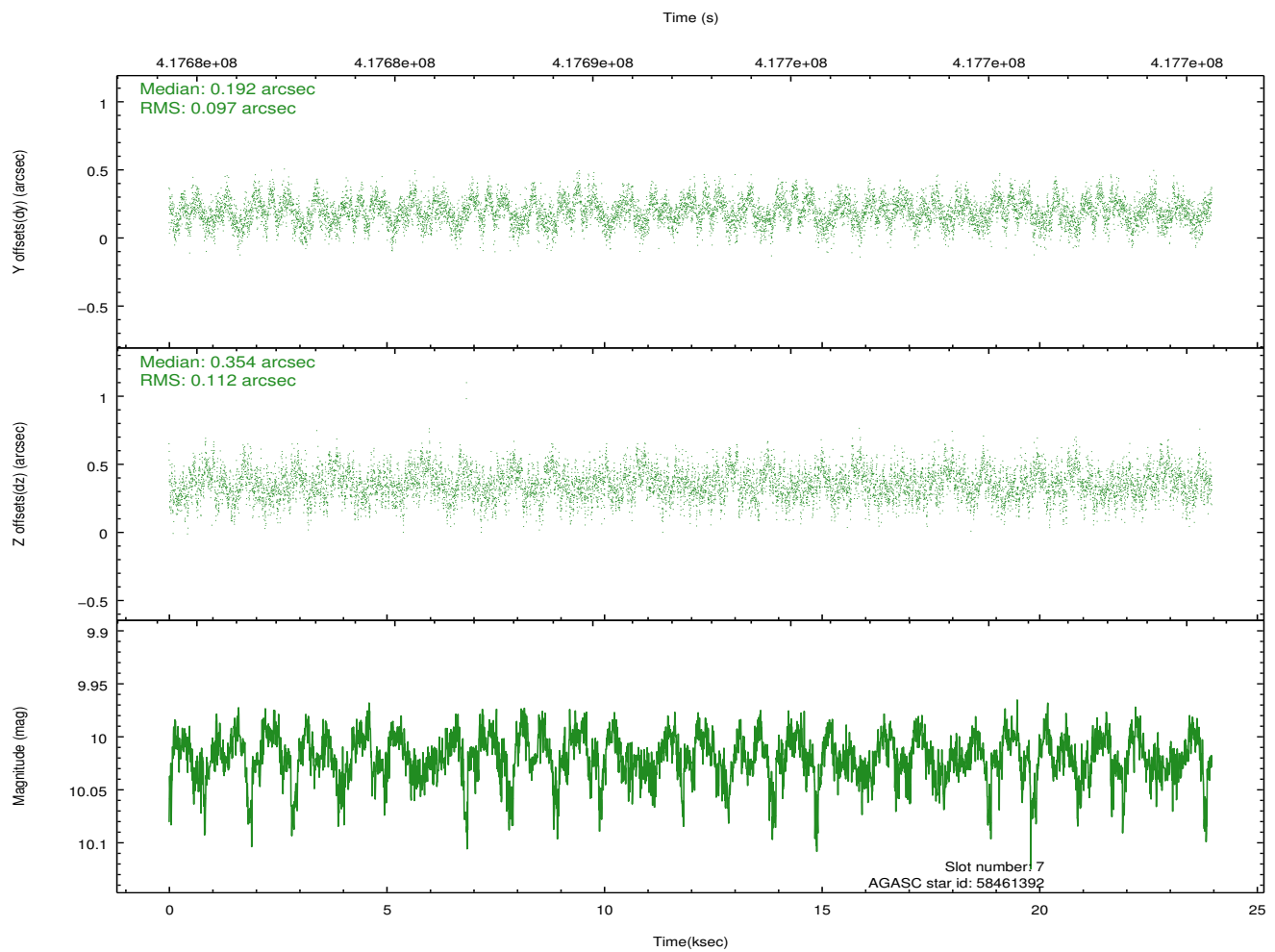
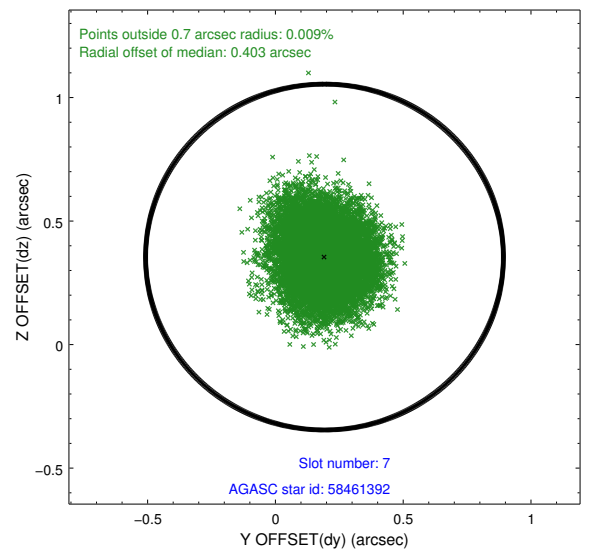
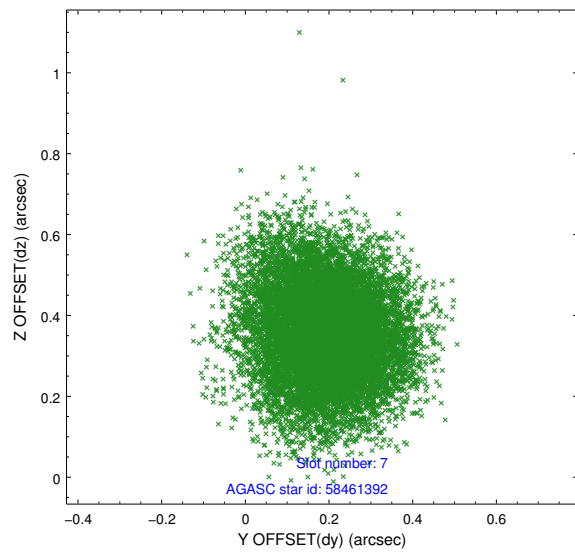
2.4.3 Slot 5



2.4.4 Slot 6

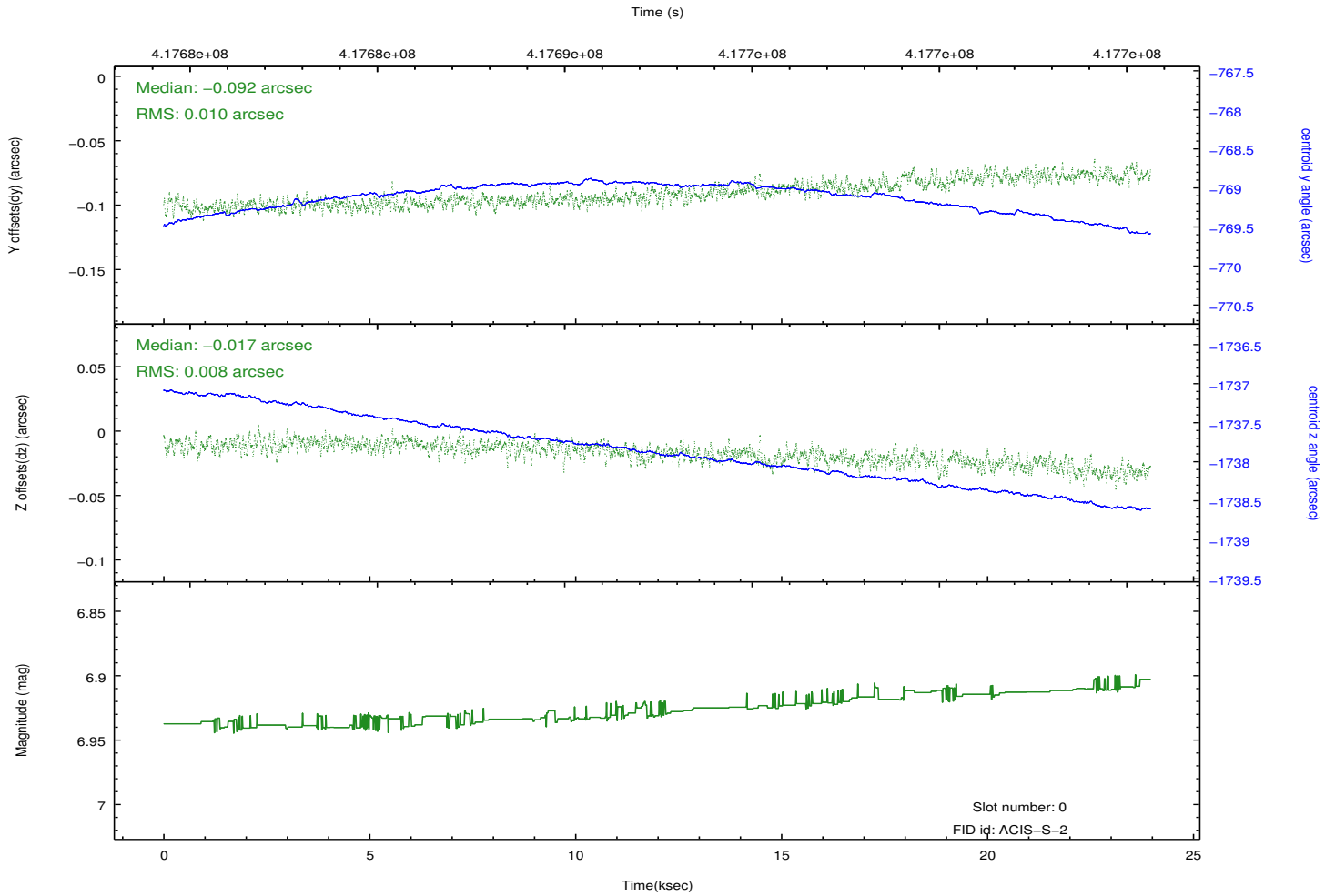
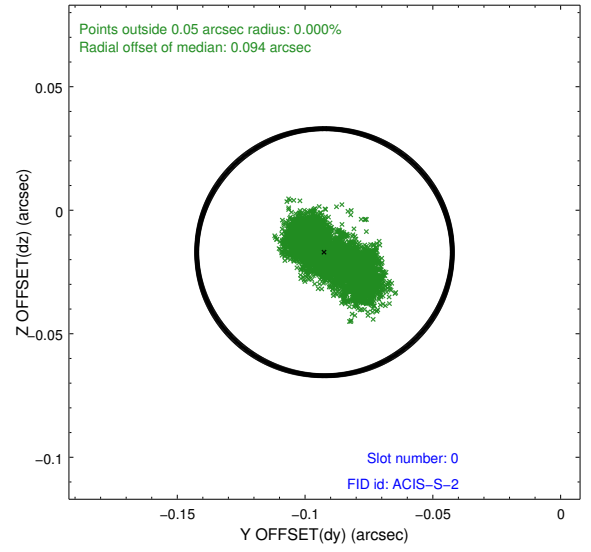
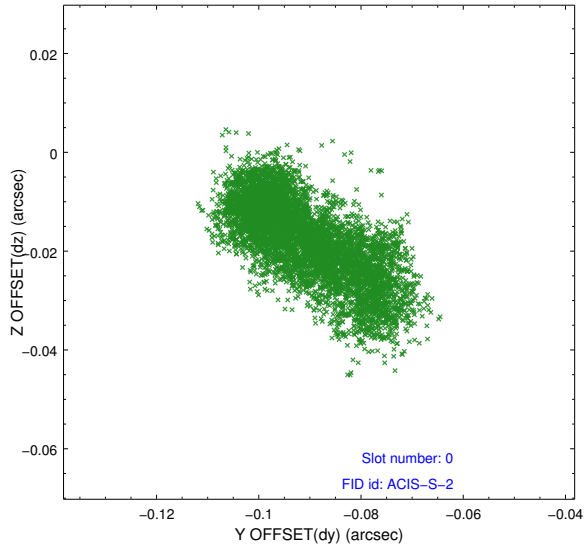


2.4.5 Slot 7

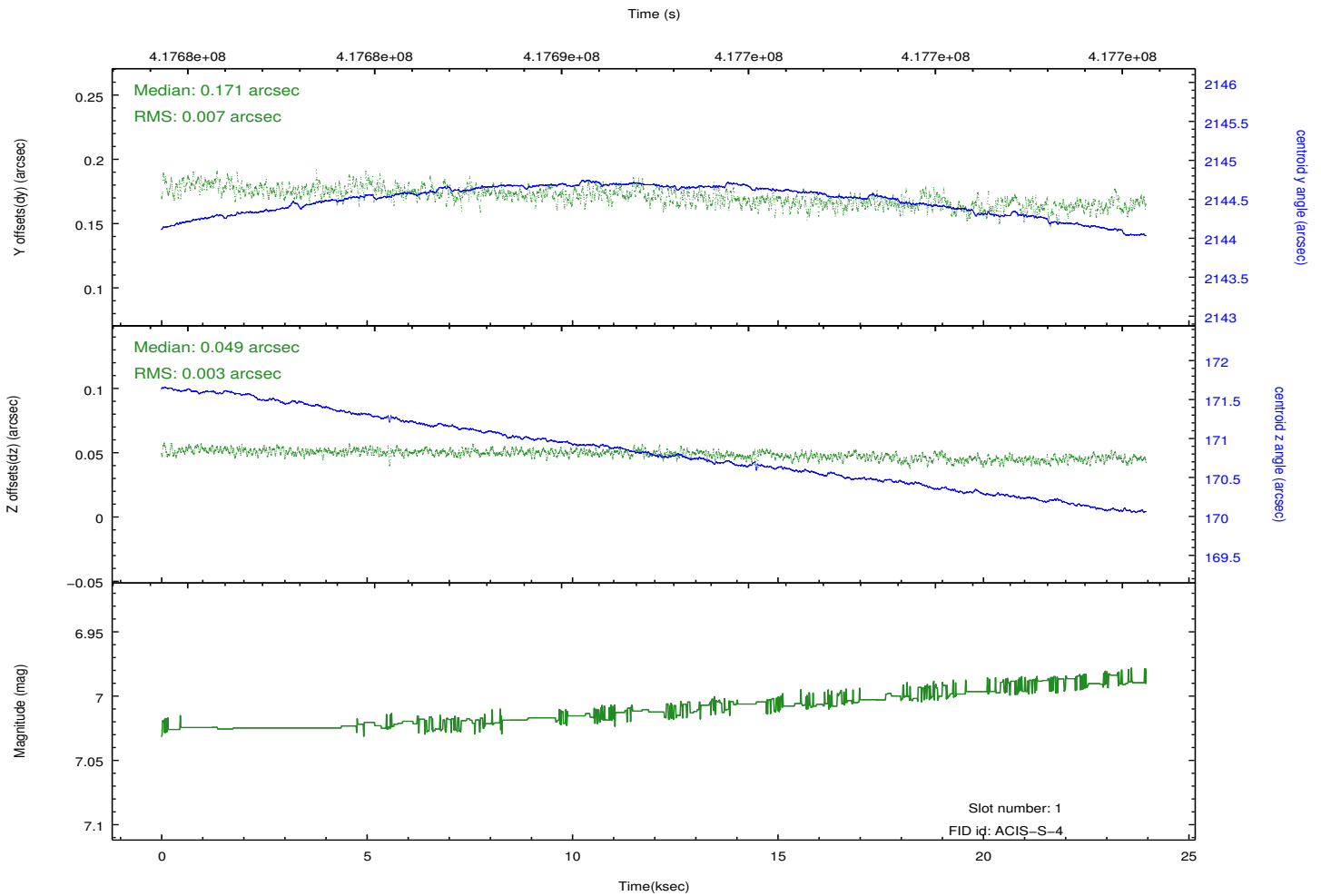
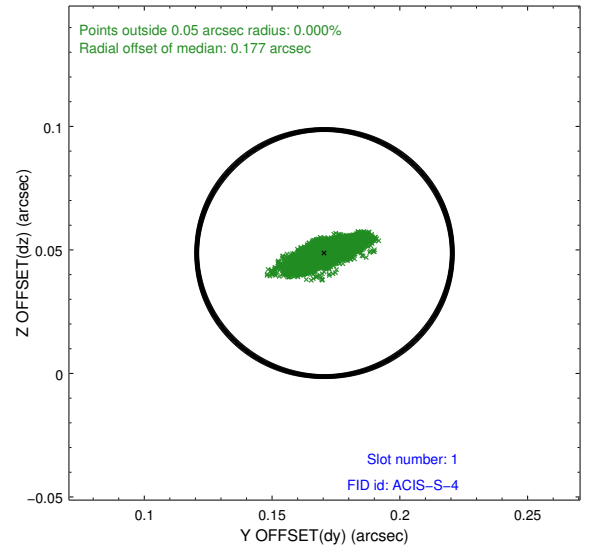
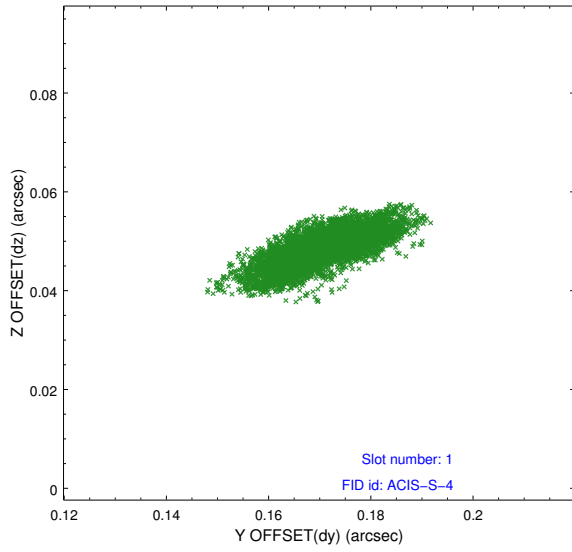


2.5 FID Slots

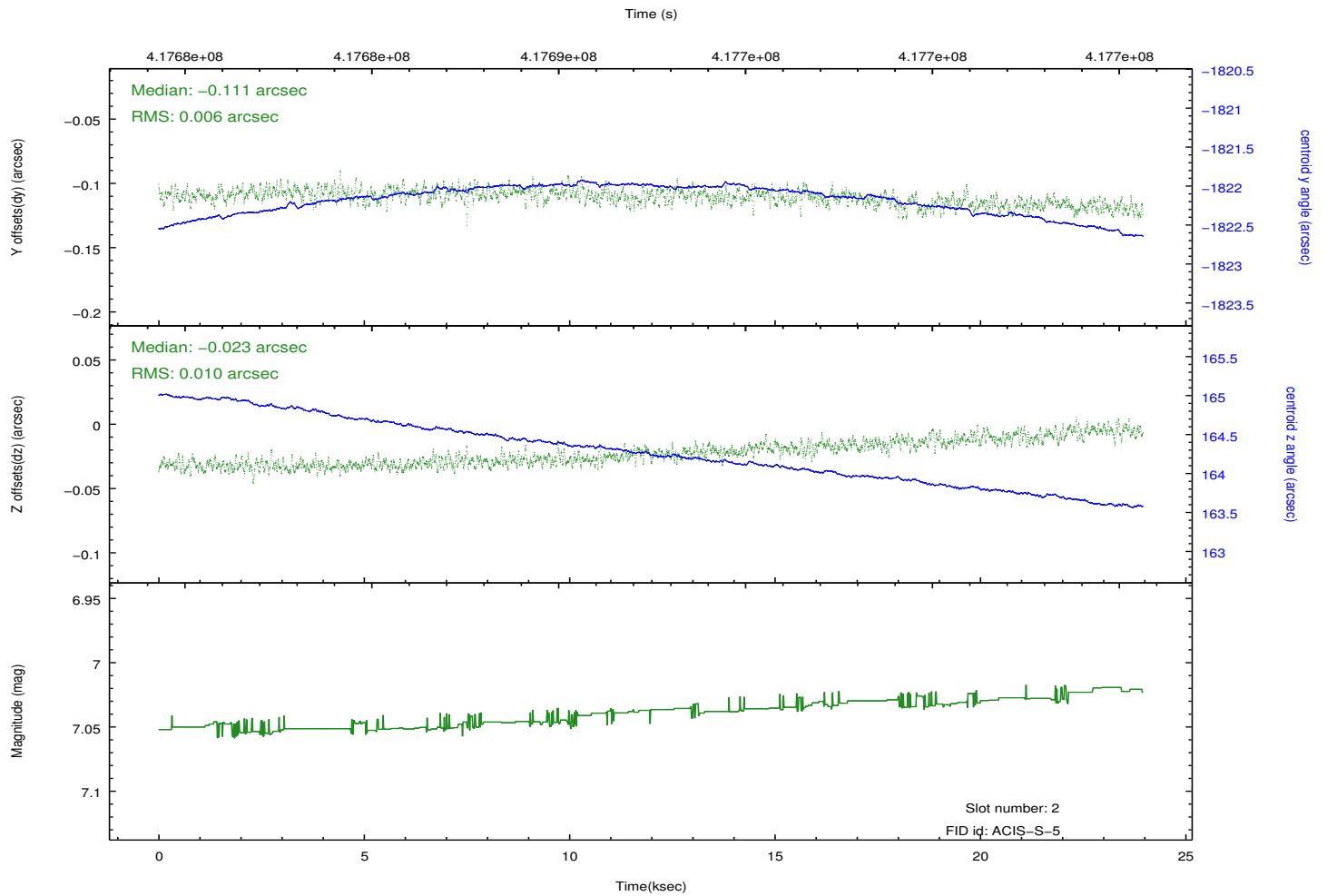
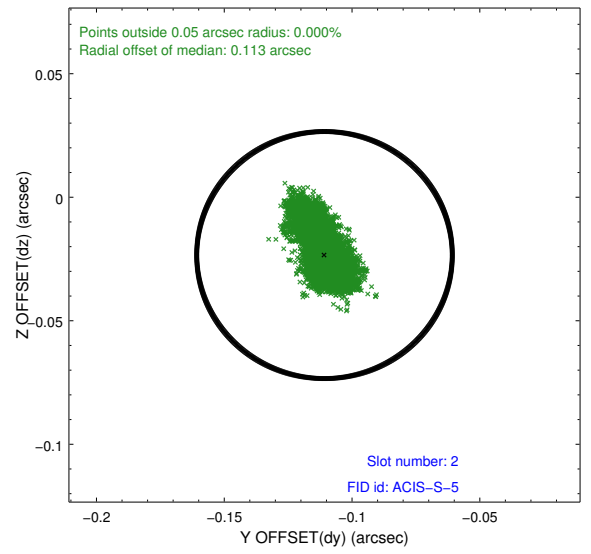
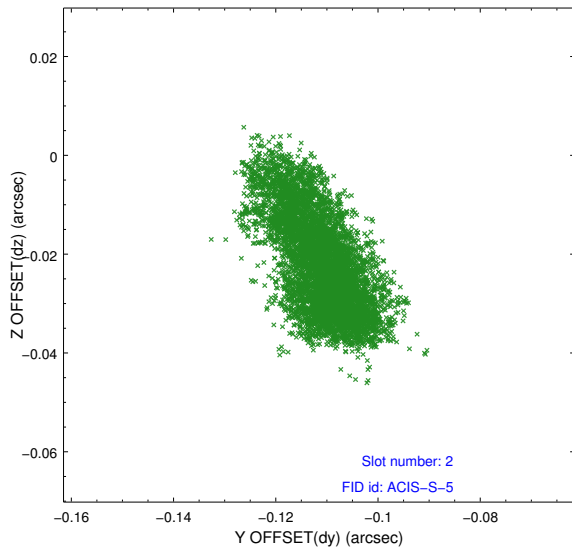
2.5.1 Slot 0



2.5.2 Slot 1



2.5.3 Slot 2



A Summary

A.1 Status

V&V Scientist	Jen Lauer
V&V Date (YYYY-MM-DD)	2012.02.09
V&V Edition	1
V&V Disposition and Status	OK
V&V Charge Time	23.046399914205

A.2 Comments

The data for this observation have been processed using the 'EDSER' sub-pixel event-repositioning algorithm of Li et al. (2004, ApJ, 610, 1204). Small-scale features should become sharper for sources near the aim point. The improvement will be less noticeable for off-axis sources where the size of the point-spread function is comparable to or larger than the size of an ACIS pixel. To take full advantage of the improvement, images should be binned on spatial scales smaller than the size of an ACIS pixel. Note that, at present, the point-spread function has not been calibrated for data to which the EDSEr algorithm has been applied. If dither was disabled for the observation, then the algorithm can introduce artificial aliasing effects on spatial scales smaller than a pixel. If you would prefer to use no sub-pixel adjustment or to apply a coordinate randomization, then use `acis_process_events` to reprocess the data with the parameter `pix_adj=NONE` or `RANDOMIZE`, respectively.

=====

Source apparently located at ra= 18:32:50.45, dec= +00:29:05.4.