

V&V Reference Report

L2 ASCDS Version : 8.4.5

Observation 126 - L2 Version 4
Chandra X-Ray Center

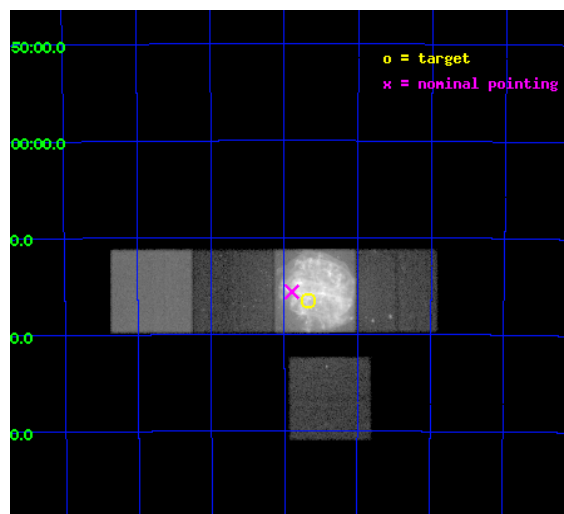
L2 Processing Date : Aug 24 2012

Contents

1	Front	2
2	OBI	3
2.1	OBI	3
2.1.1	Images	3
2.1.2	Bias	3
2.1.3	Parameters	4
2.1.4	Events	4
2.2	Compared Parameters	5
2.3	Aspect	6
2.4	Star Slots	9
2.4.1	Slot 3	9
2.4.2	Slot 4	10
2.4.3	Slot 5	11
2.4.4	Slot 6	12
2.4.5	Slot 7	13
2.5	FID Slots	14
2.5.1	Slot 0	14
2.5.2	Slot 1	15
2.5.3	Slot 2	16
A	Summary	17
A.1	Status	17
A.2	Comments	17

1 Front

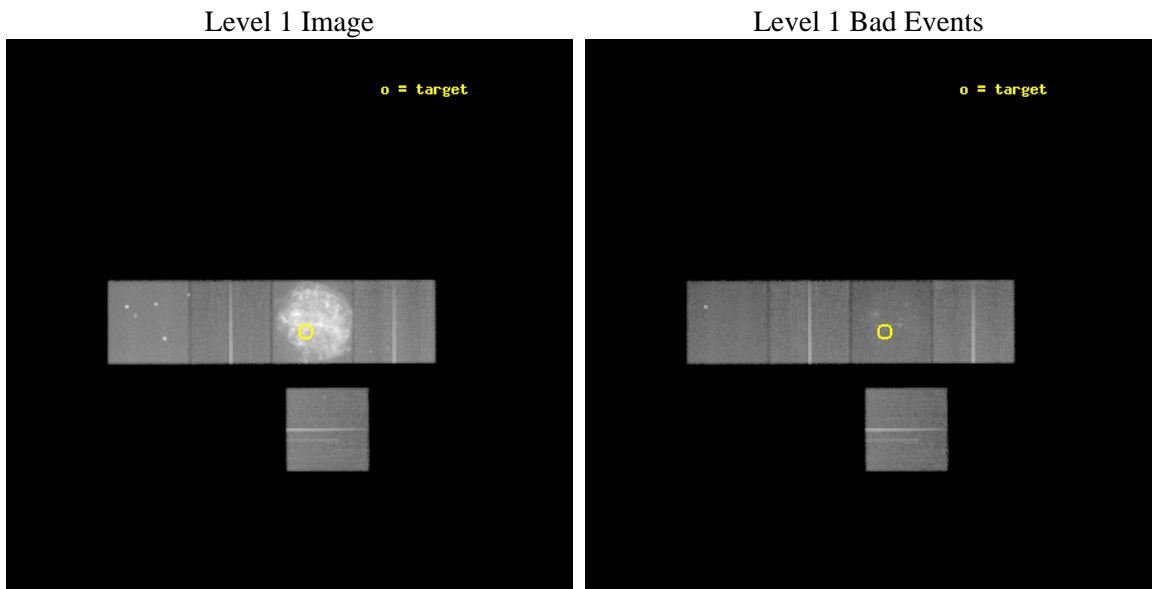
seq_num	500013	Sequence number
obs_id	126	Observation id
title	G292.0+1.8: A REMARKABLE OXYGEN-RICH SUPERNOVA REMNANT	Proposal ti
observer	Professor Gordon Garmire	Principal investigator
object	SNR 292.0+01.8	Source name
dtcycle	0	
cycle	P	events from which exps? Prim/Second/Both
ra_targ	171.16667	Observer's specified target RA [deg]
dec_targ	-59.275	Observer's specified target Dec [deg]
ra_nom	171.22437444279	Nominal RA [deg]
dec_nom	-59.260353728939	Nominal Dec [deg]
roll_nom	359.80608949856	Nominal Roll [deg]
revision	4	Processing version of data
ontime	44166.318100721	Sum of GTIs [s]
lifetime	43607.057587165	Lifetime [s]
ontime3	44169.559060946	Sum of GTIs [s]
ontime5	44172.800041124	Sum of GTIs [s]
ontime6	44166.318100721	Sum of GTIs [s]
ontime7	44166.318100721	Sum of GTIs [s]
ontime8	44169.559060946	Sum of GTIs [s]
l2events	3395036	Number of level 2 events



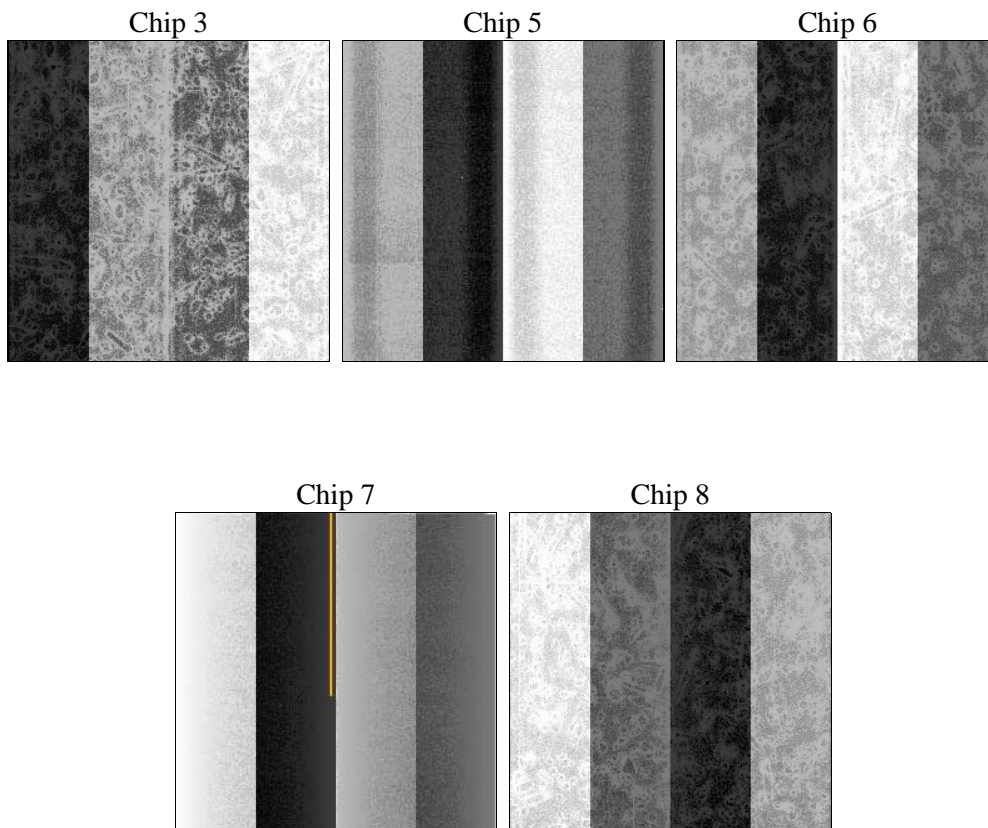
2 OBI

2.1 OBI

2.1.1 Images



2.1.2 Bias



2.1.3 Parameters

obi_num	0	Obi number	sched_exp_time	45000.000000	[s] Scheduled observation exposure time
ascdsver	8.4.5	Processing system revision	ontime	44166.318100721	Sum of GTIs [s]
caldbver	4.5.1.1	 	ontime3	44169.559060946	Sum of GTIs [s]
date	2012-08-24T06:24:04	Date and time of file creation	ontime5	44172.800041124	Sum of GTIs [s]
revision	4	Processing version of data	ontime6	44166.318100721	Sum of GTIs [s]
			ontime7	44166.318100721	Sum of GTIs [s]
			ontime8	44169.559060946	Sum of GTIs [s]
			l1events	4871230	Number of level 1 events

2.1.4 Events

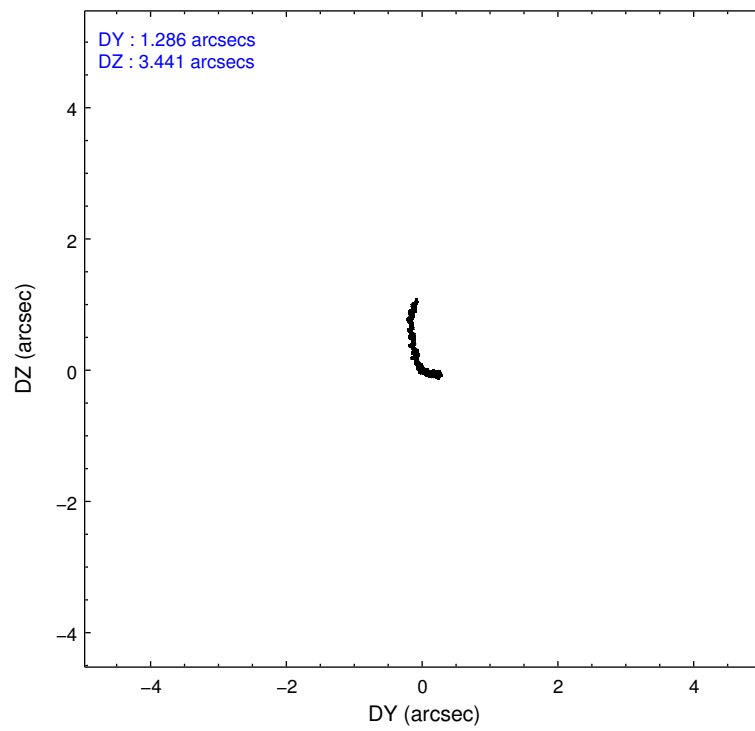
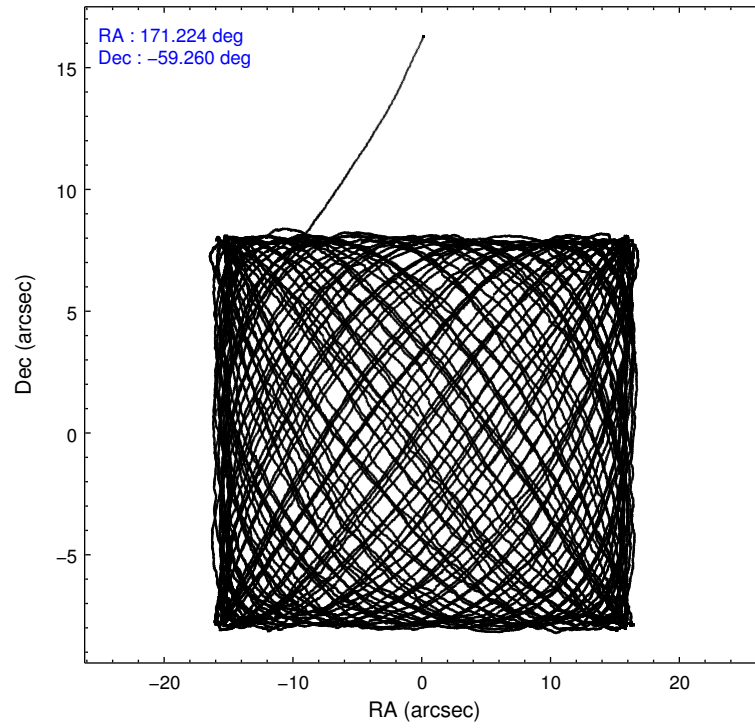
	ccd 3	ccd 5	ccd 6	ccd 7	ccd 8
level 1 events	326186	433095	345622	3348026	418301
rejected events	286573	222636	295154	239251	322954
rejected %	87%	51%	85%	7%	77%

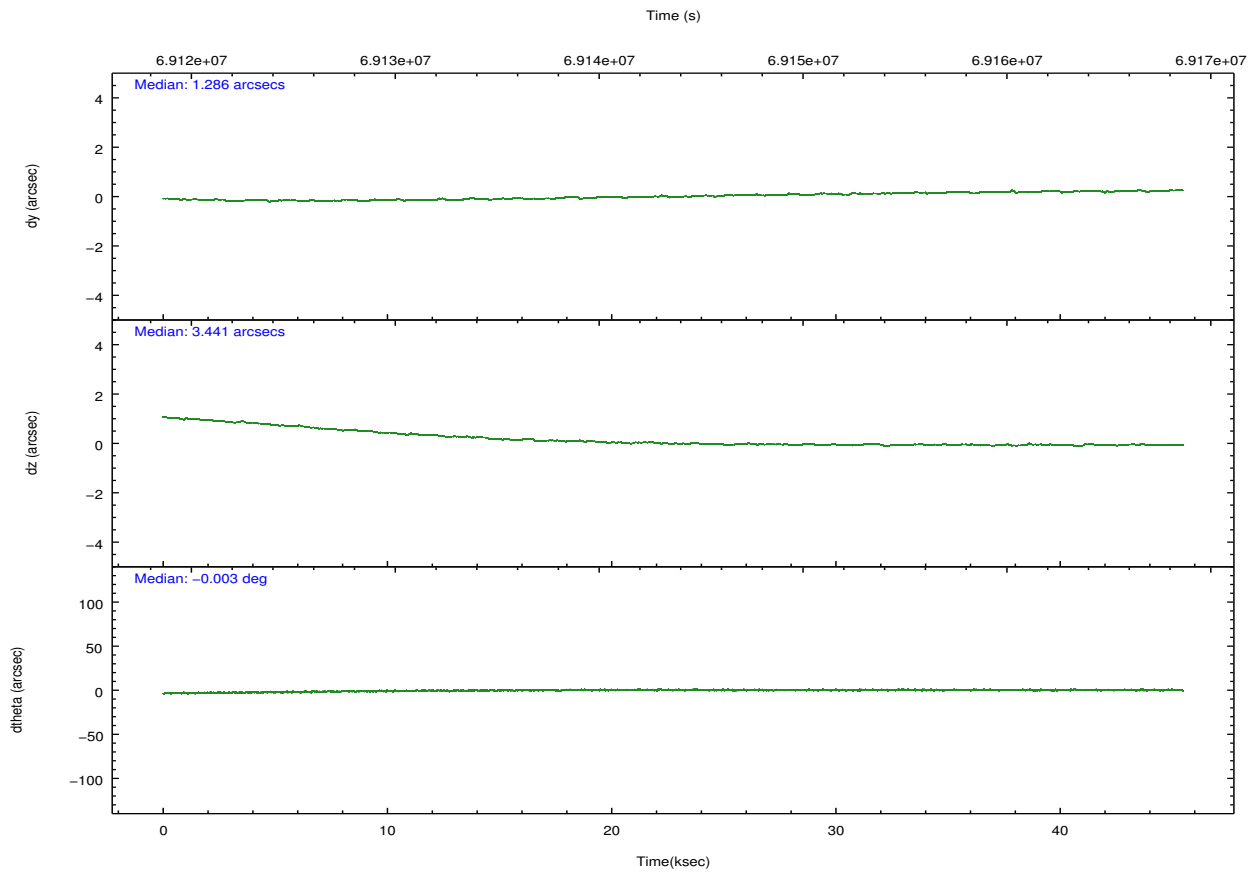
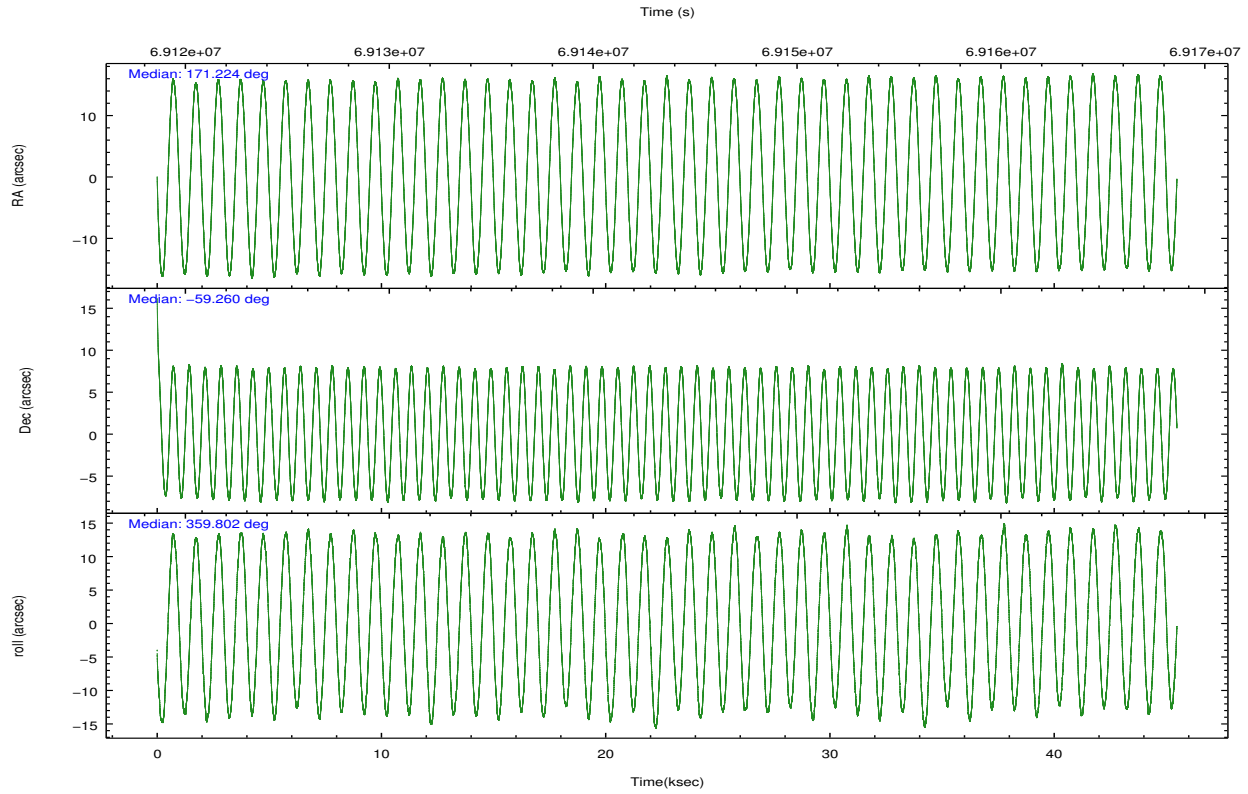
	ccd 3	ccd 5	ccd 6	ccd 7	ccd 8
grade 0 events	20300	33073	28498	998747	42129
	6%	7%	8%	29%	10%
grade 1 events	162	482	216	2380	316
	0%	0%	0%	0%	0%
grade 2 events	6831	60507	7774	827447	17638
	2%	13%	2%	24%	4%
grade 3 events	3479	9566	3776	373494	8102
	1%	2%	1%	11%	1%
grade 4 events	3432	9133	3806	369866	7622
	1%	2%	1%	11%	1%
grade 5 events	10448	33857	11874	55011	15123
	3%	7%	3%	1%	3%
grade 6 events	5572	98194	6625	539577	19858
	1%	22%	1%	16%	4%
grade 7 events	275962	188283	283053	181504	307513
	84%	43%	81%	5%	73%

2.2 Compared Parameters

Parameter	Planned	Actual	Parameter	Planned	Actual
Instrument	ACIS	ACIS	Obspar format version number	7	7
Detector	ACIS-35678	ACIS-35678	Obspar file type	PREDICTED	ACTUAL
Grating	NONE	NONE	Obspar update status	NONE	UPDATED
Data mode	FAINT	FAINT	Number of optional ACIS chips dropped	0	0
Observation mode	POINTING	POINTING	On-chip summing requested	N	N
[deg] Pointing RA	171.177767	171.2243744427933	Subarray requested	NONE	NONE
[deg] Pointing Dec	-59.274049	-59.26035372893855	Alternating exposures requested	N	N
[deg] Pointing Roll	359.609405	359.8060894985566	[s] Primary exposure time	0.000000	3.2
[mm] SIM focus pos	-0.684267	-0.6828225247311905			
[mm] SIM defocus	0	0.001444936568705701			
[mm] SIM translation stage pos	-190.132523	-190.1400660498719			
[mm] SIM translation stage offset	0	0.00754346686406393			
[s] Observation start time (MET)	69121362.184000	69120346.88448299			
Observation start date	2000-03-11T00:21:38	2000-03-11T00:05:46			
[s] Observation end time (MET)	69166362.184000	69168106.761228			
Observation end date	2000-03-11T12:51:38	2000-03-11T13:21:46			
Read mode	TIMED	TIMED			

2.3 Aspect



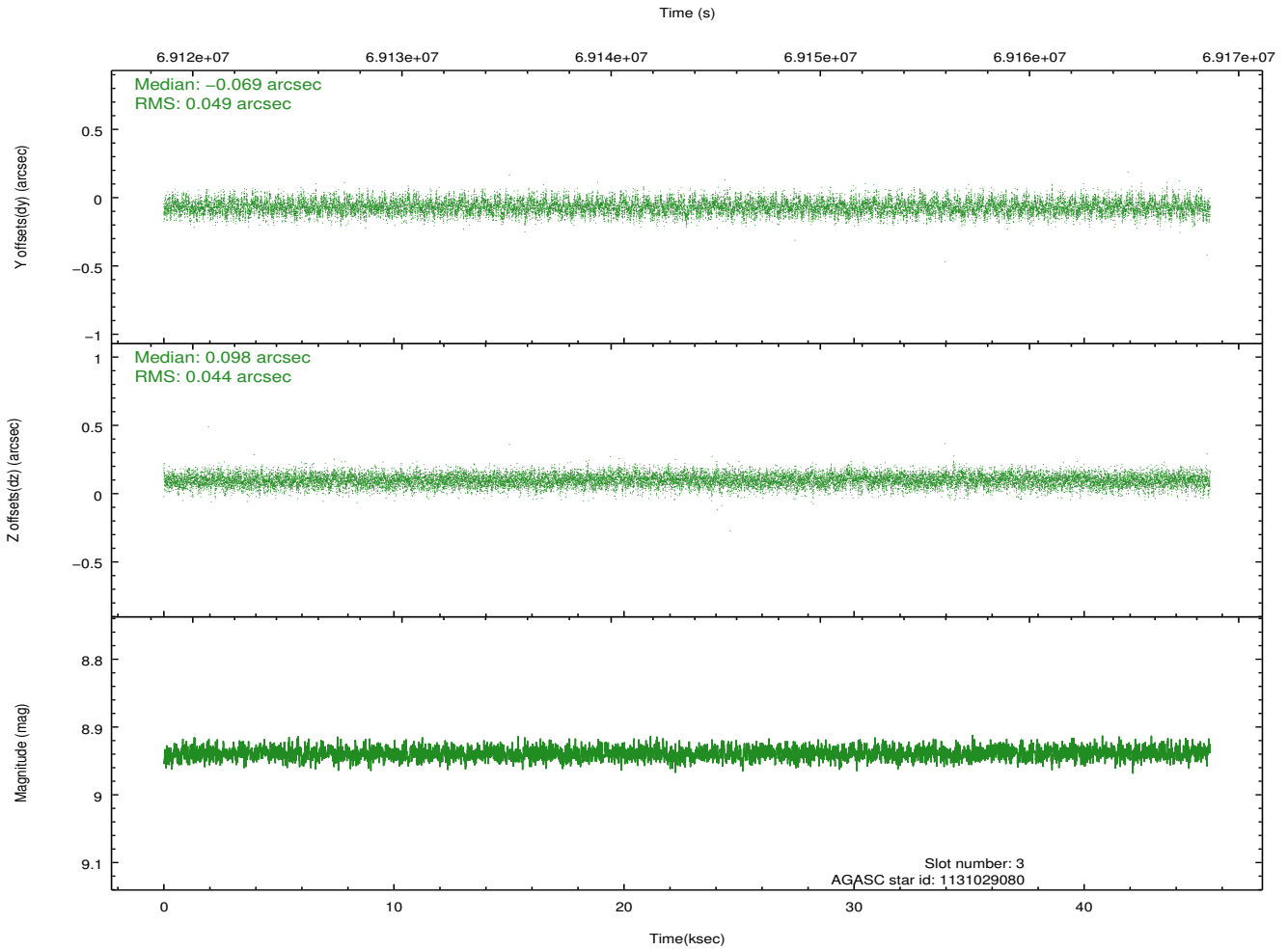
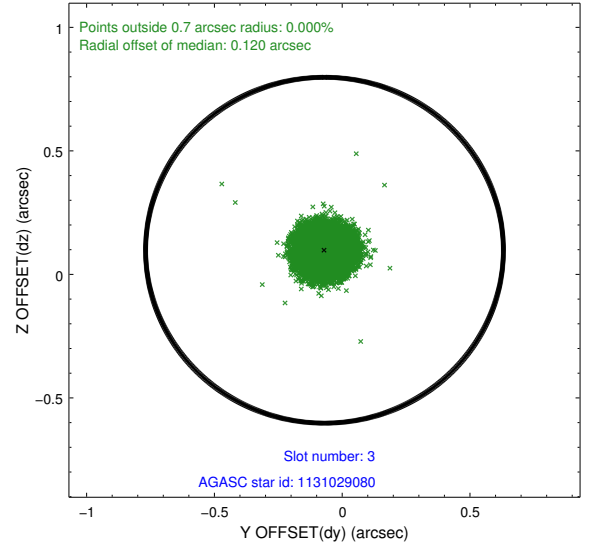
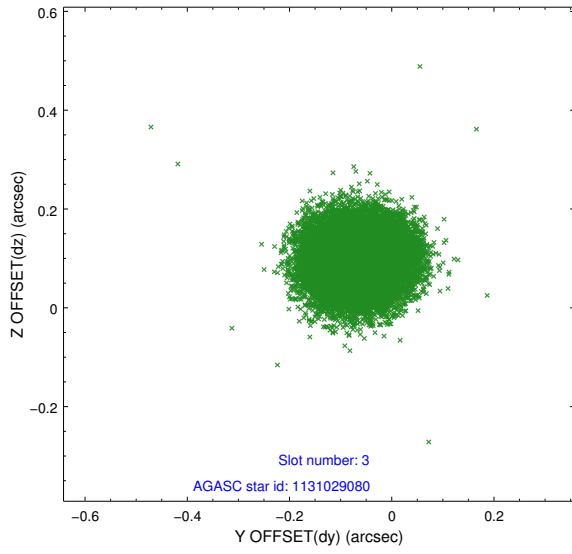


Slot Statistics

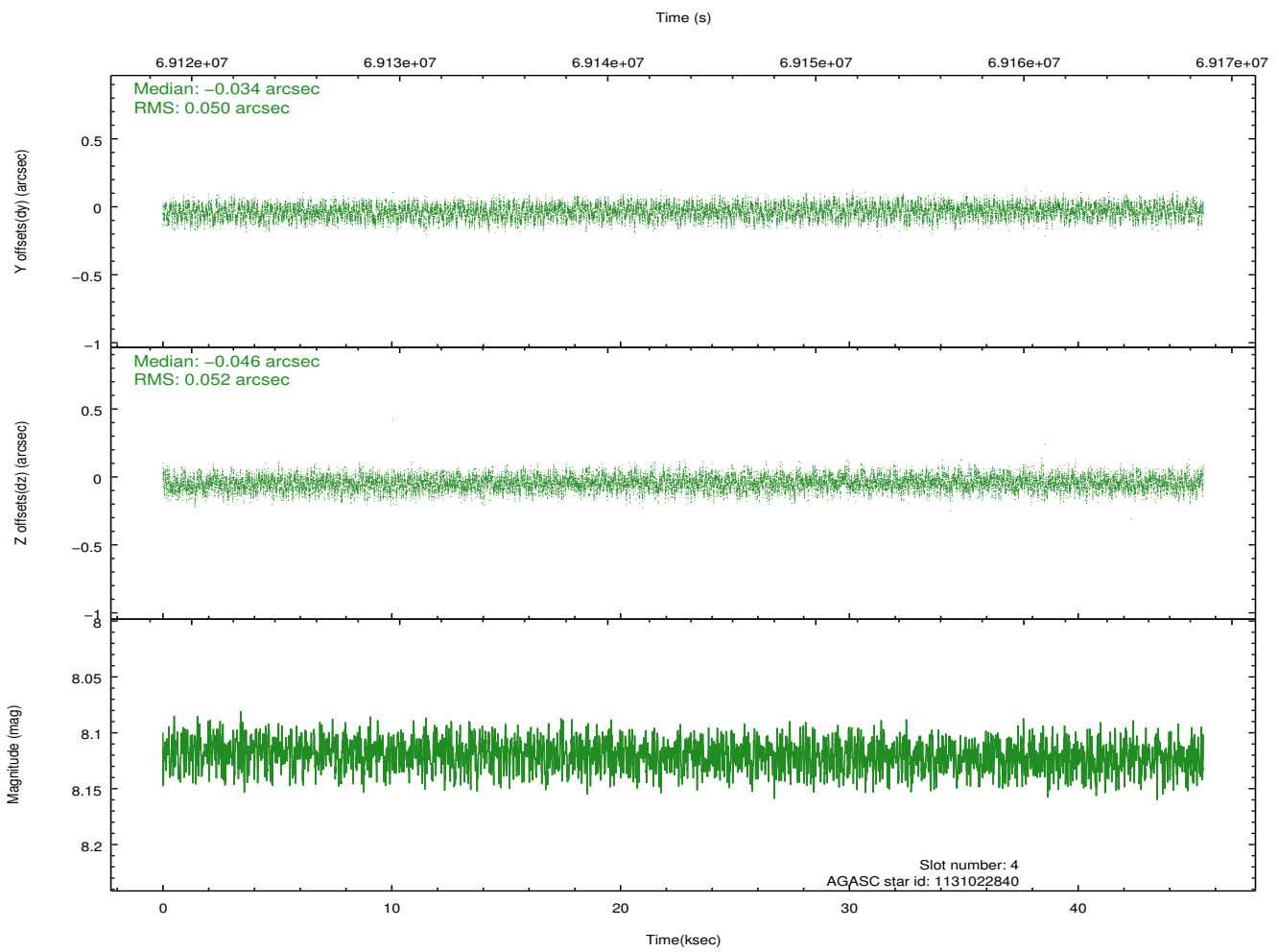
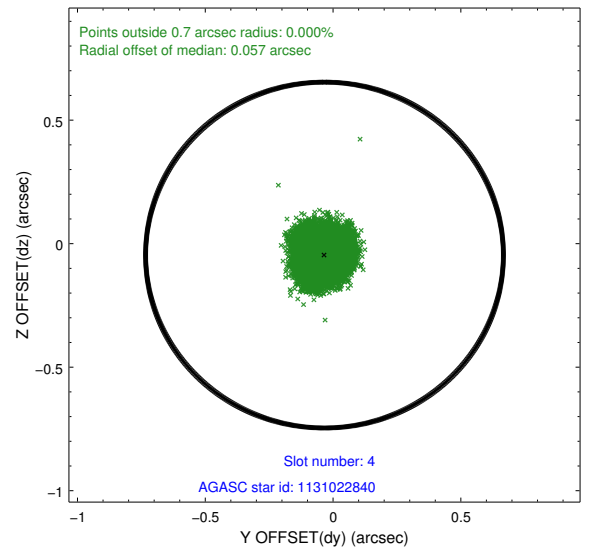
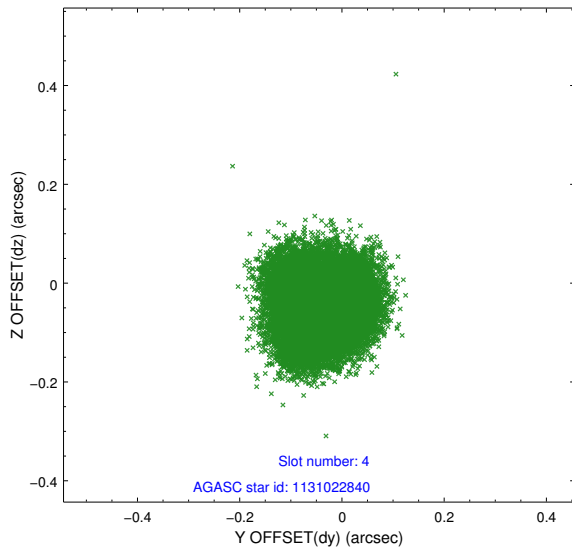
slot	status	id	mag	n_pts	med_dy	med_dz	dr1	dr2	ra	dec	mean_y	mean_z
0	FID	ACIS-S-2	7.11	11090	-0.006	-0.014	0.008	0.016	0.000000	0.000000	-753.95	-1724.69
1	FID	ACIS-S-4	7.21	11088	-0.001	0.007	0.006	0.012	0.000000	0.000000	2159.38	183.75
2	FID	ACIS-S-5	7.23	11089	-0.023	0.016	0.008	0.015	0.000000	0.000000	-1806.77	177.51
3	GUIDE	1131029080	8.94	22178	-0.069	0.098	0.070	0.113	171.812391	-59.641198	1163.70	-1319.44
4	GUIDE	1131022840	8.12	22177	-0.034	-0.046	0.078	0.120	171.962816	-58.680484	1454.36	2137.93
5	GUIDE	1131026392	8.76	22175	0.113	0.079	0.066	0.107	170.009630	-59.570346	-2122.16	-1100.16
6	GUIDE	1131022600	9.26	22166	0.017	-0.034	0.092	0.146	172.023713	-58.610166	1569.69	2390.51
7	GUIDE	1131031128	9.75	22165	-0.024	-0.092	0.112	0.188	170.344500	-59.795707	-1496.11	-1898.08

2.4 Star Slots

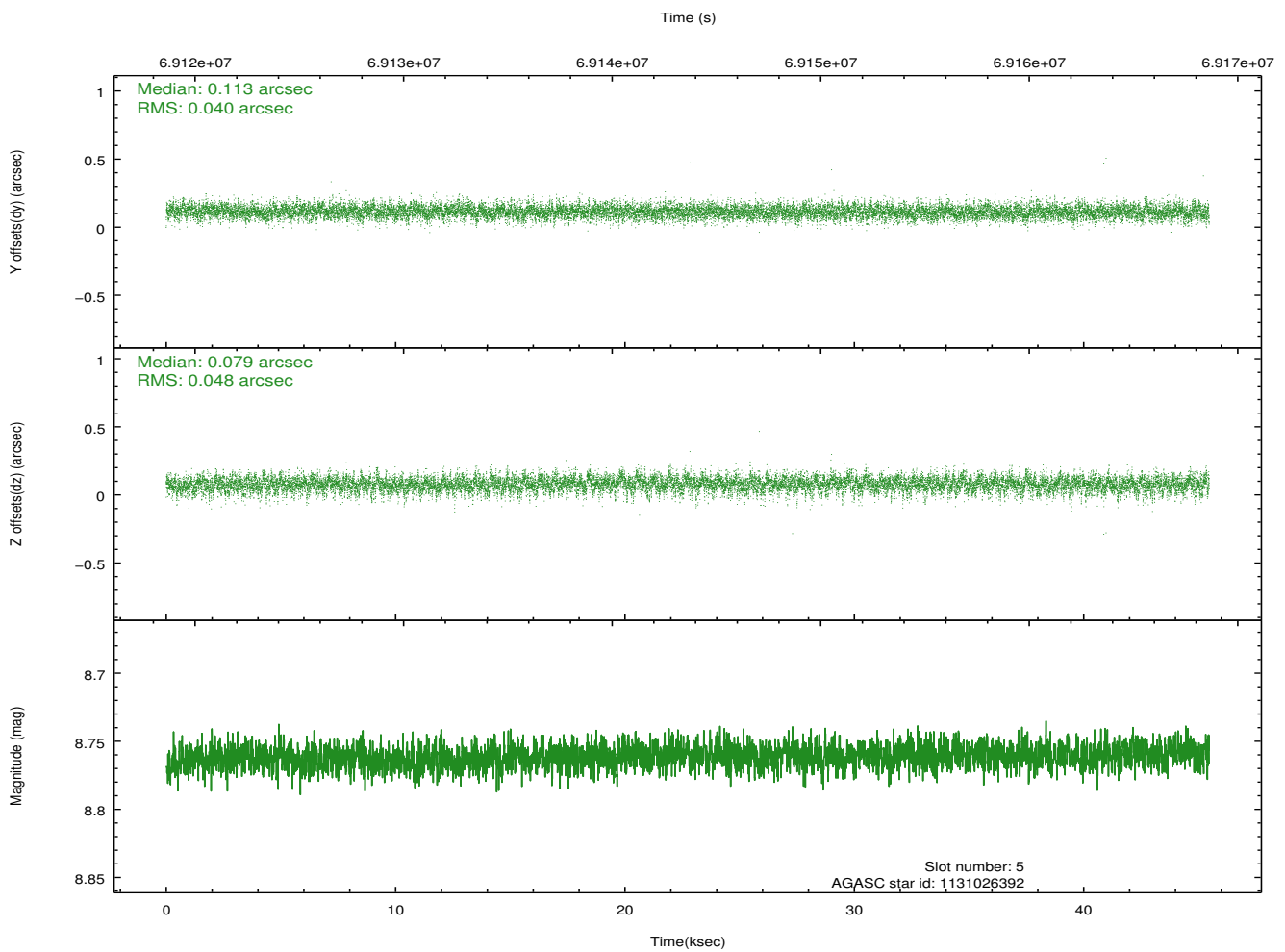
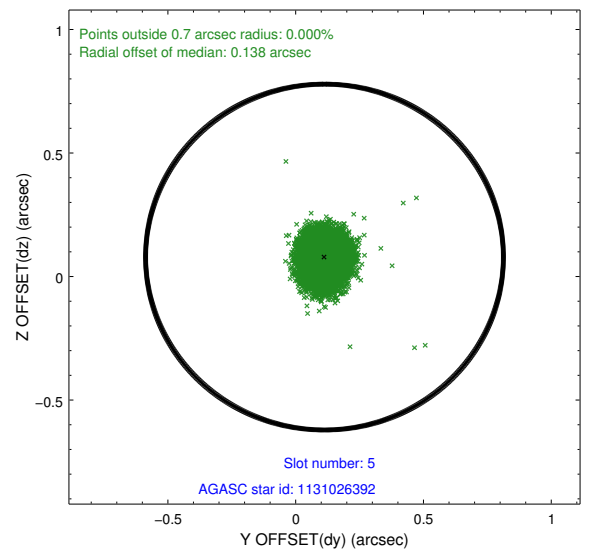
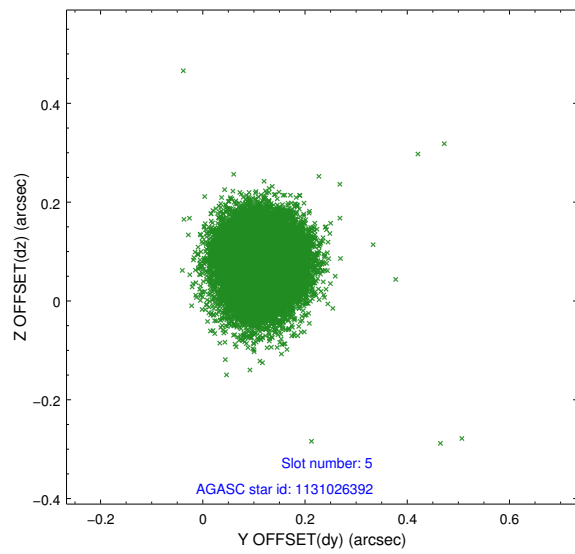
2.4.1 Slot 3



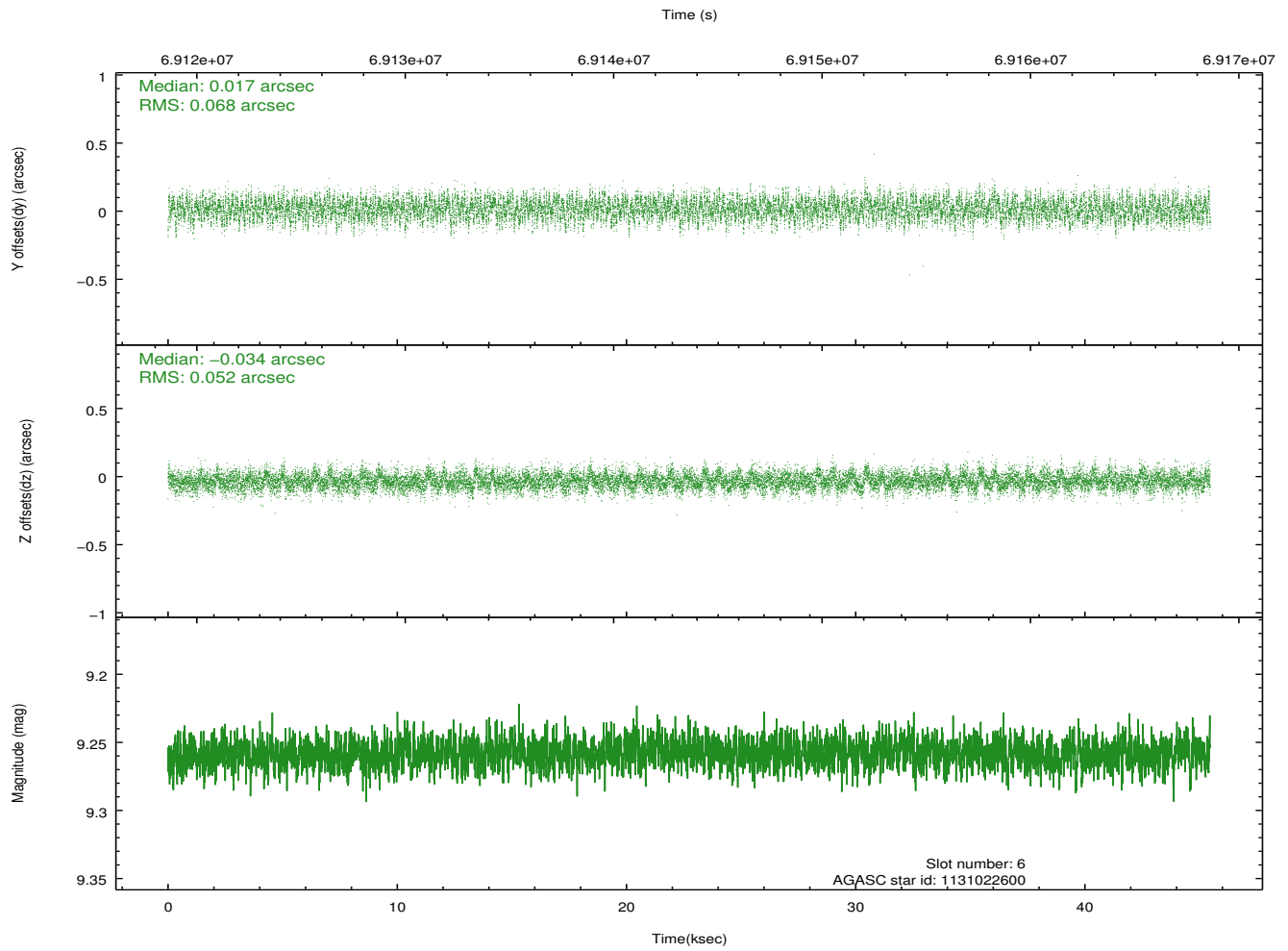
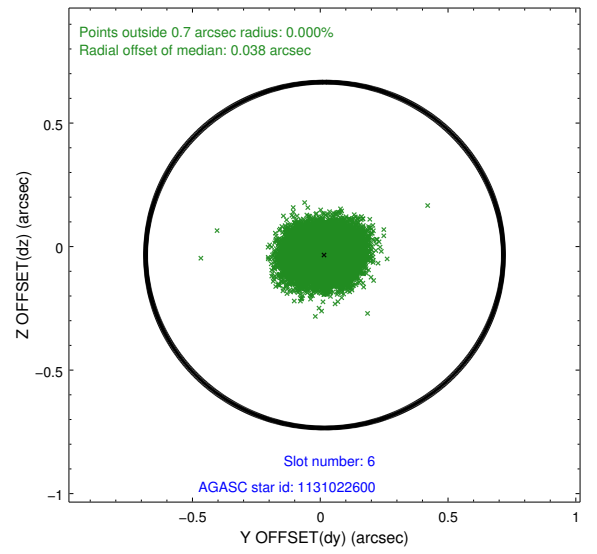
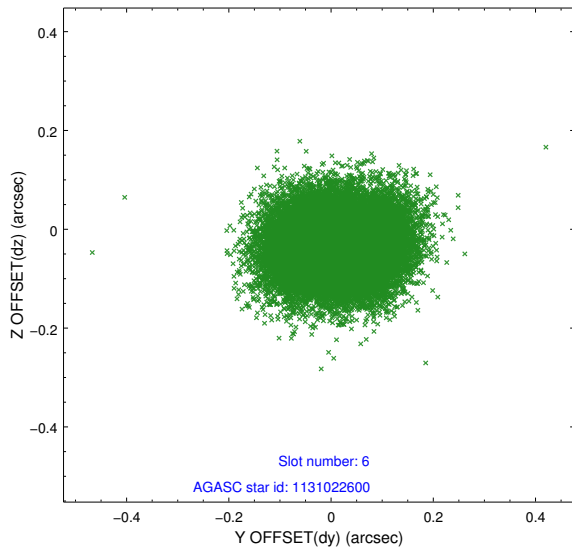
2.4.2 Slot 4



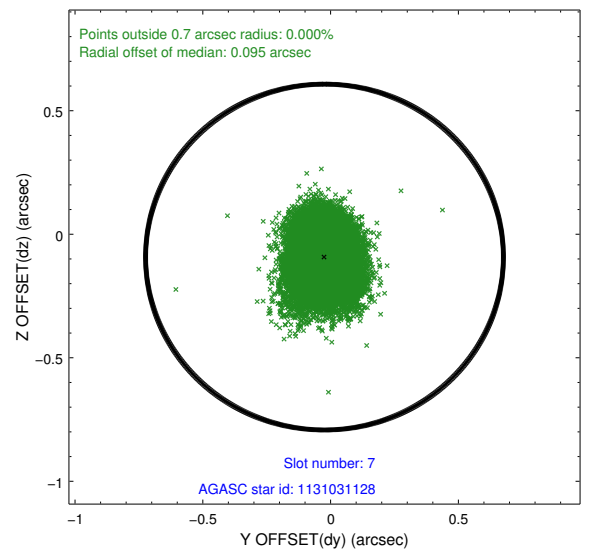
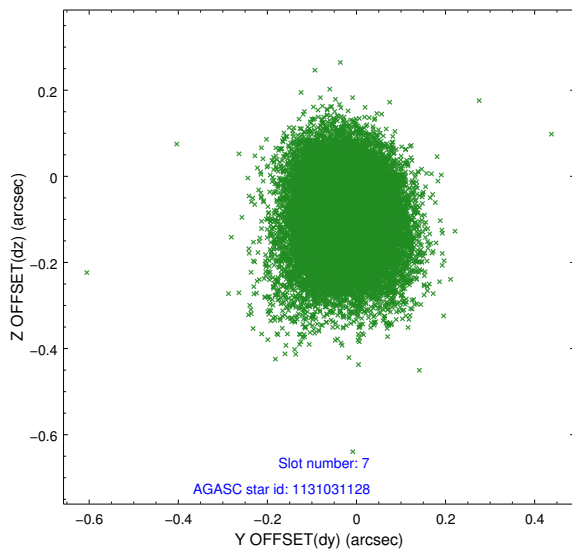
2.4.3 Slot 5



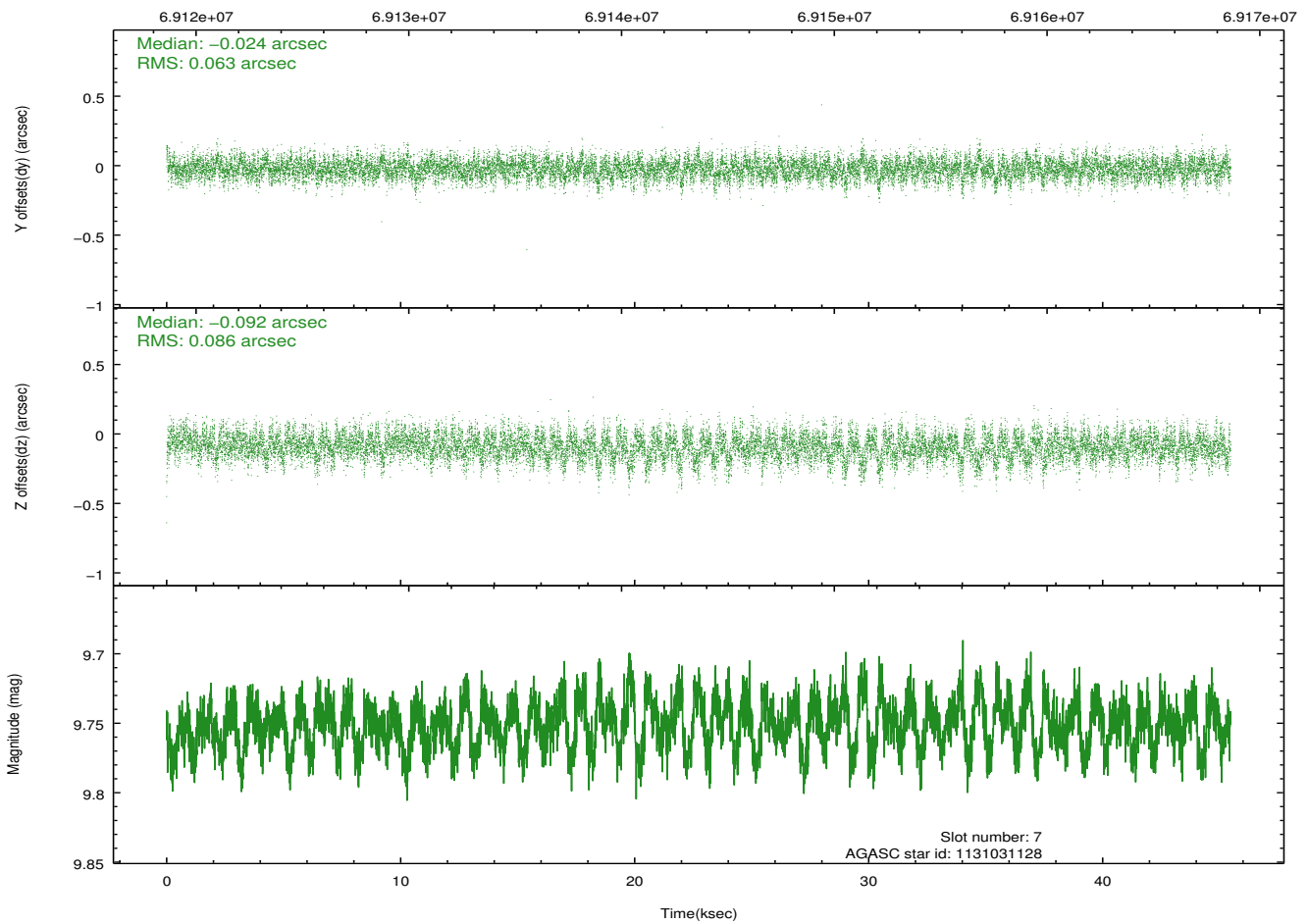
2.4.4 Slot 6



2.4.5 Slot 7

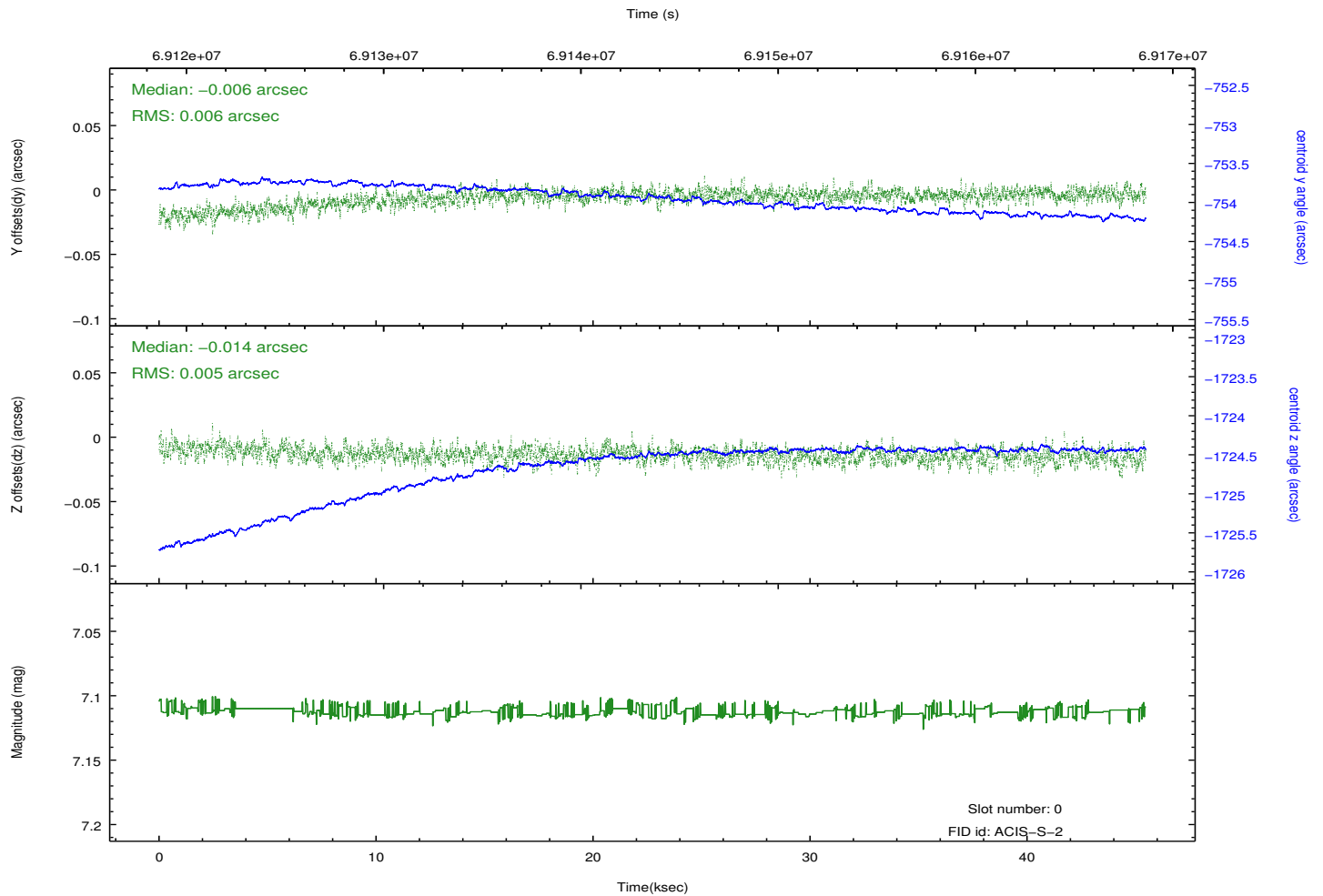
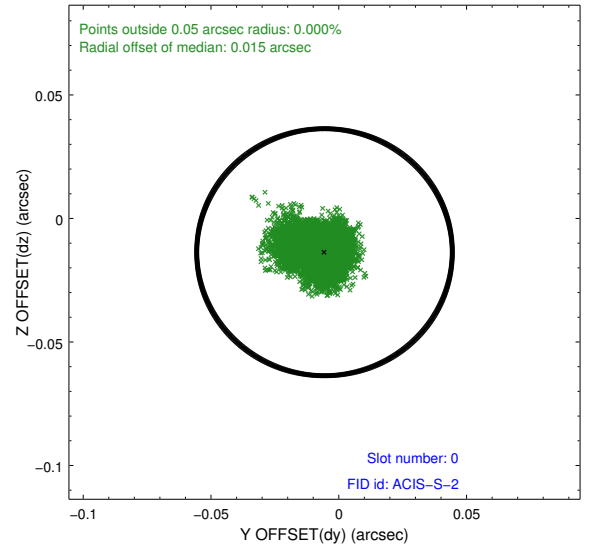
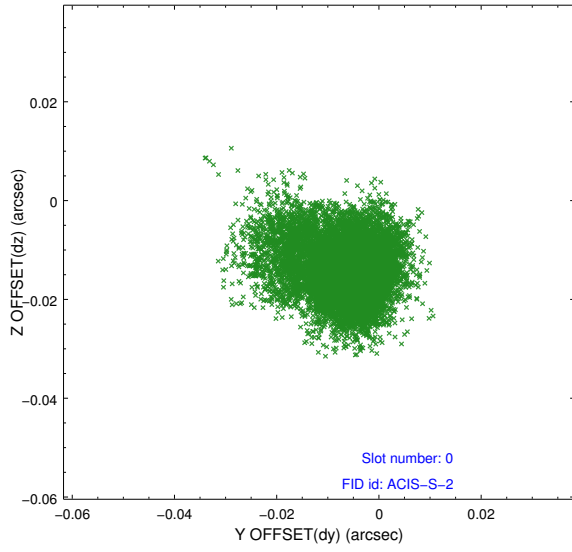


Time (s)

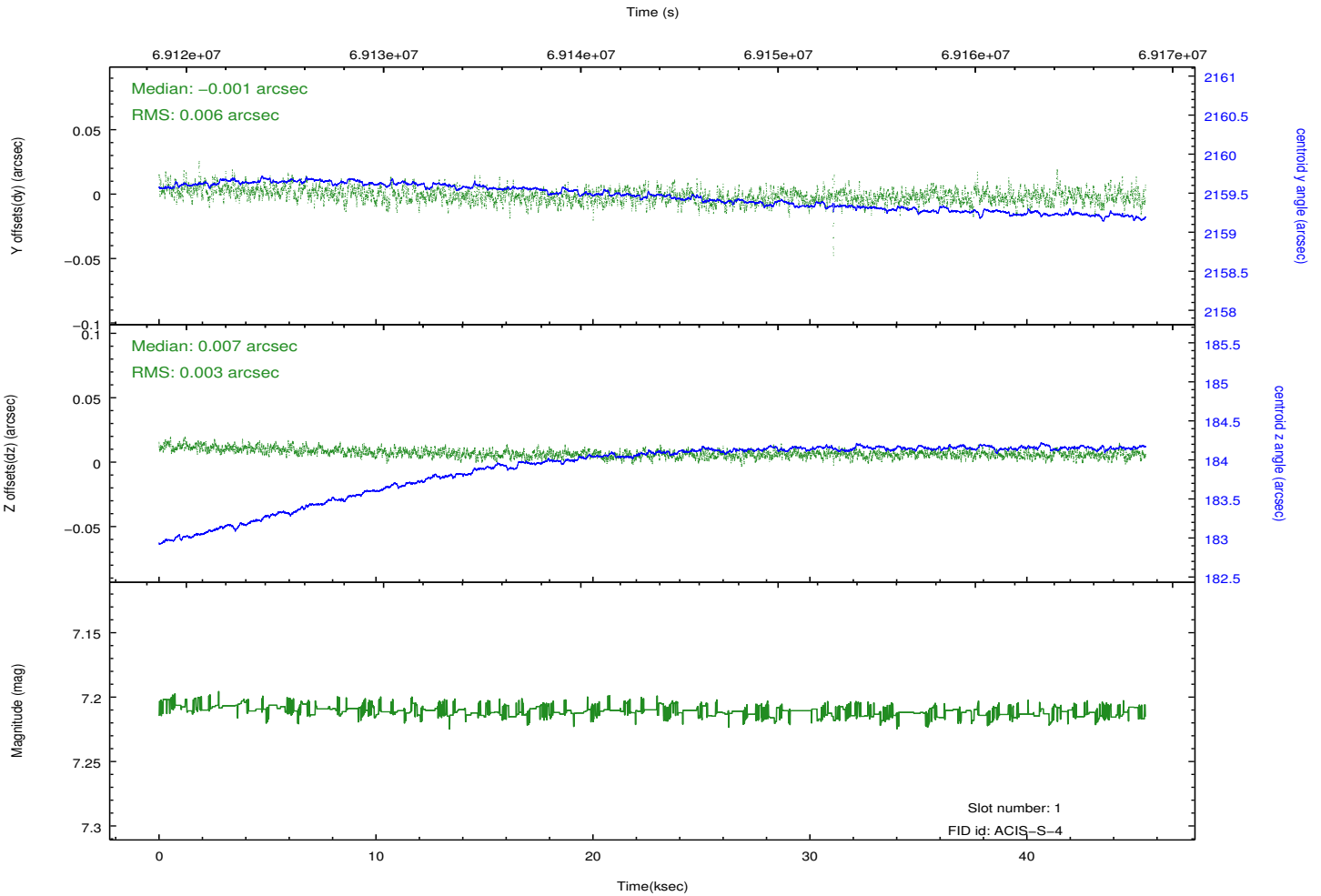
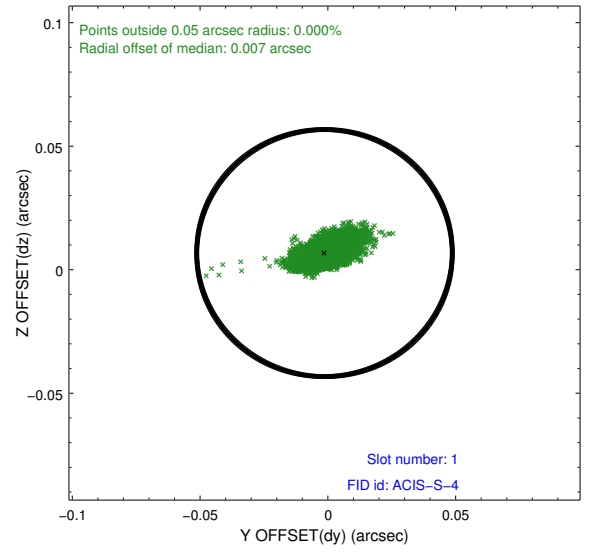
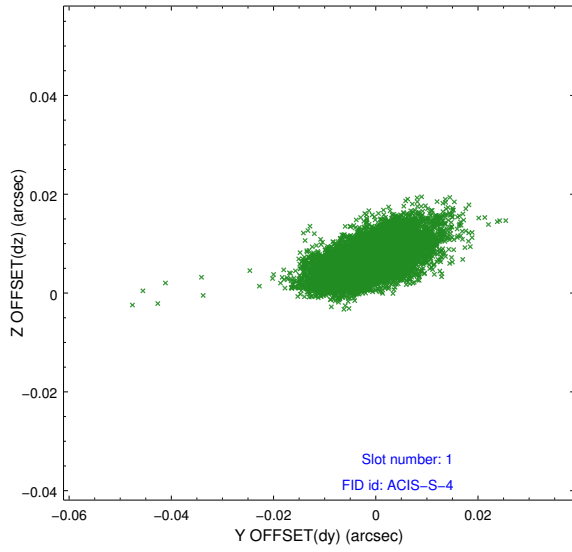


2.5 FID Slots

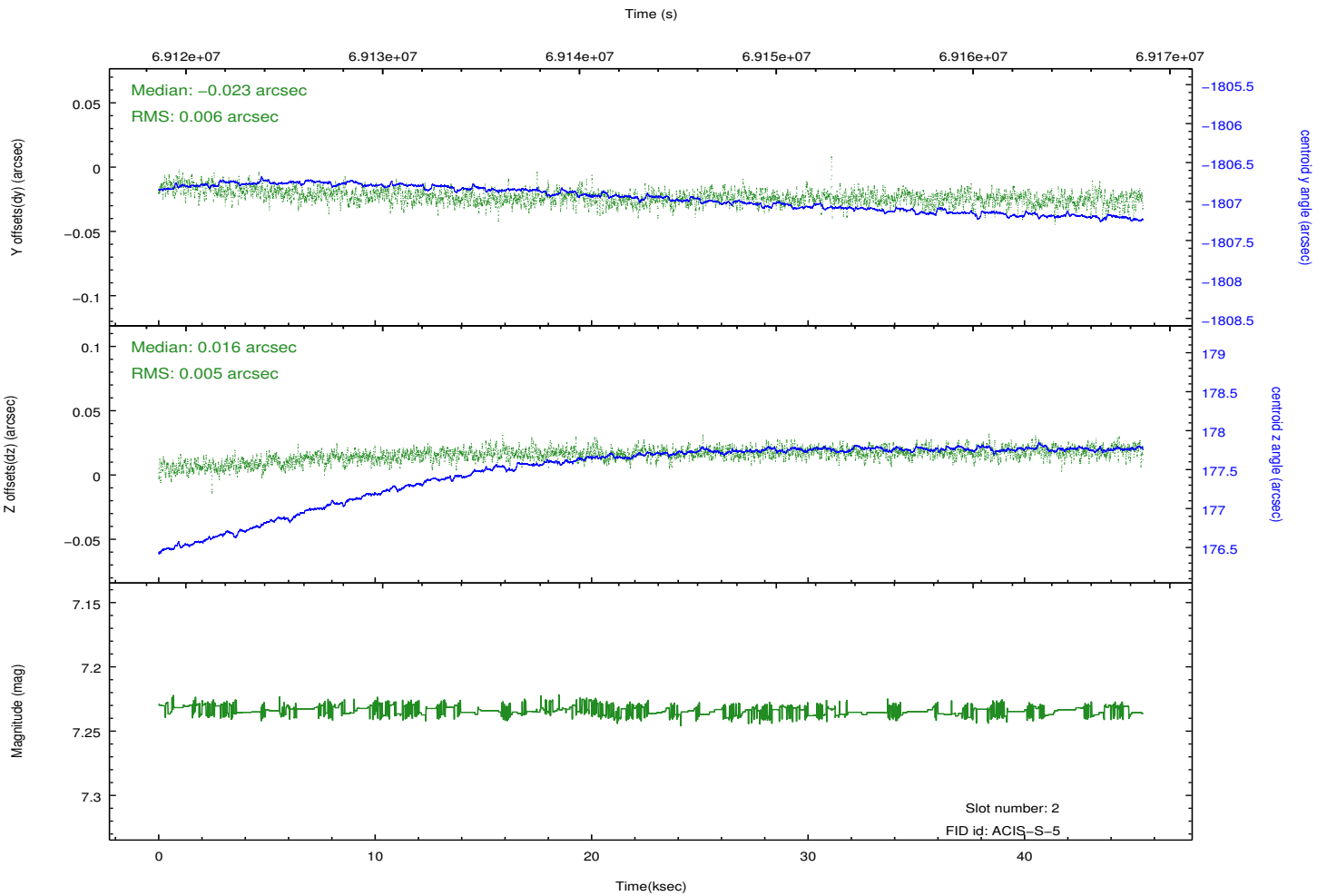
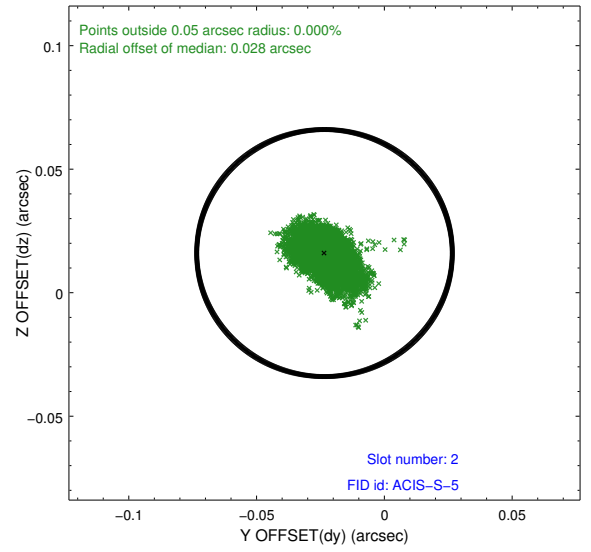
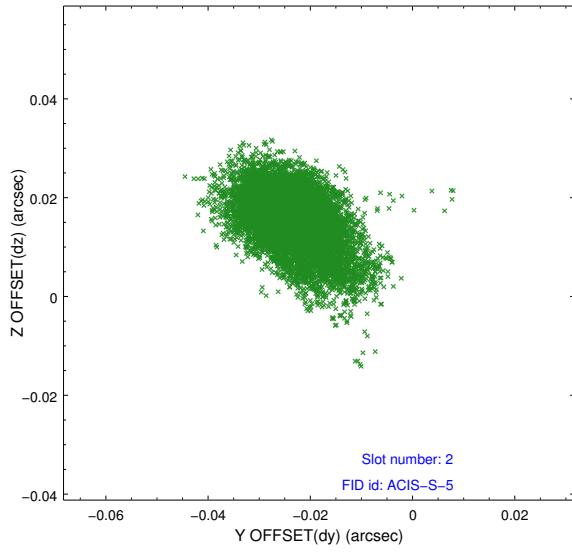
2.5.1 Slot 0



2.5.2 Slot 1



2.5.3 Slot 2



A Summary

A.1 Status

V&V Scientist	Jen Lauer
V&V Date (YYYY-MM-DD)	2012.08.27
V&V Edition	1
V&V Disposition and Status	OK
V&V Charge Time	44.169

A.2 Comments