

V&V Reference Report

L2 ASCDS Version : 8.4.3

Observation 12806 - L2 Version 1
Chandra X-Ray Center

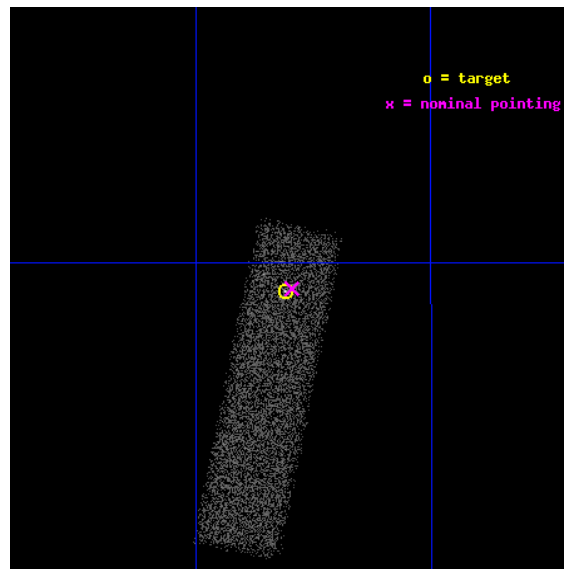
L2 Processing Date : Jan 12 2012

Contents

1	Front	2
2	OBI	3
2.1	OBI	3
2.1.1	Images	3
2.1.2	Bias	3
2.1.3	Parameters	4
2.1.4	Events	4
2.2	Compared Parameters	5
2.3	Aspect	6
2.4	Star Slots	9
2.4.1	Slot 3	9
2.4.2	Slot 4	10
2.4.3	Slot 5	11
2.4.4	Slot 6	12
2.4.5	Slot 7	13
2.5	FID Slots	14
2.5.1	Slot 0	14
2.5.2	Slot 1	15
2.5.3	Slot 2	16
A	Summary	17
A.1	Status	17
A.2	Comments	17

1 Front

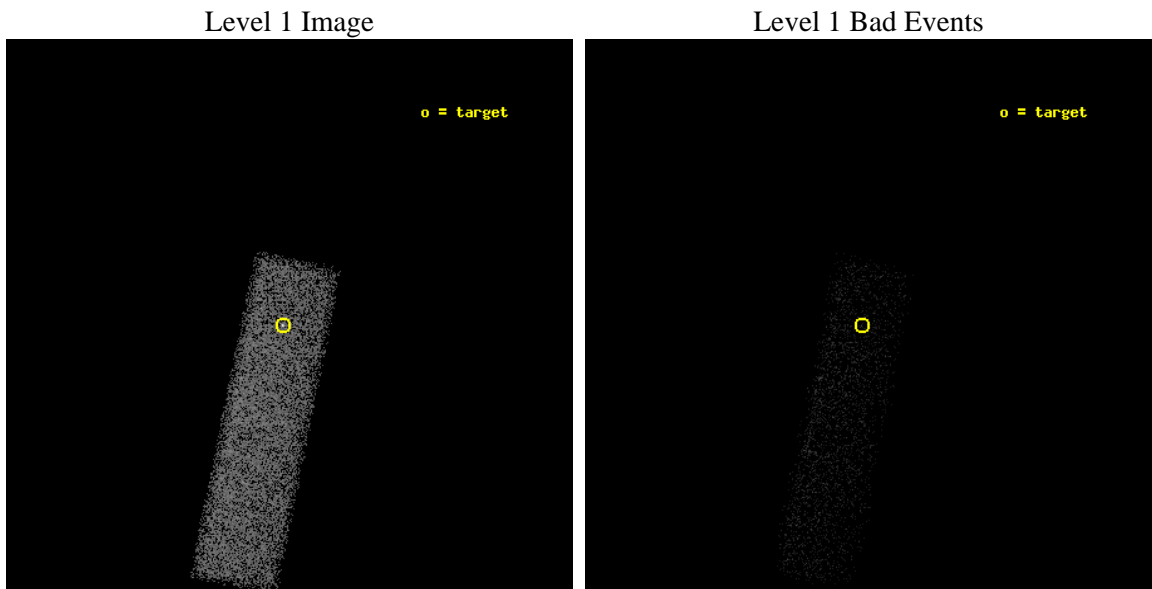
seq_num	702442	Sequence number
obs_id	12806	Observation id
title	Exploring the X-ray Properties of the Highest-Luminosity Double-Peaked Emitters	Proposal title
observer	Bin Luo	Principal investigator
object	SDSS J095948.59+344915.7	Source name
dtcycle	0	
cycle	P	events from which exps? Prim/Second/Both
ra_targ	149.9525	Observer's specified target RA [deg]
dec_targ	34.821028	Observer's specified target Dec [deg]
ra_nom	149.94904045203	Nominal RA [deg]
dec_nom	34.822084887599	Nominal Dec [deg]
roll_nom	101.45734031708	Nominal Roll [deg]
revision	1	Processing version of data
ontime	11026.400164366	Sum of GTIs [s]
livetime	10488.347916262	Livetime [s]
ontime7	11026.400164366	Sum of GTIs [s]
l2events	11666	Number of level 2 events



2 OBI

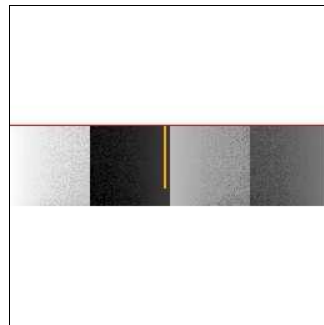
2.1 OBI

2.1.1 Images



2.1.2 Bias

Chip 7



2.1.3 Parameters

obi_num	0	Obi number	sched_exp_time	11000.000000	[s] Scheduled observation exposure time
ascdsver	8.4.3	Processing system revision	ontime	11026.400164366	Sum of GTIs [s]
caldbver	4.4.7	 	ontime7	11026.400164366	Sum of GTIs [s]
date	2012-01-12T08:41:16	Date and time of file creation	l1events	24070	Number of level 1 events
revision	1	Processing version of data			

2.1.4 Events

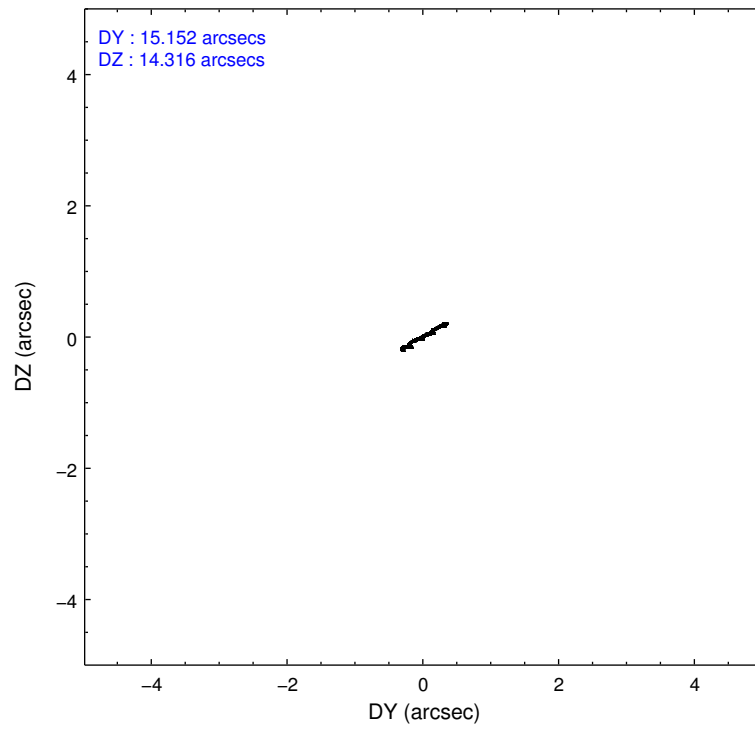
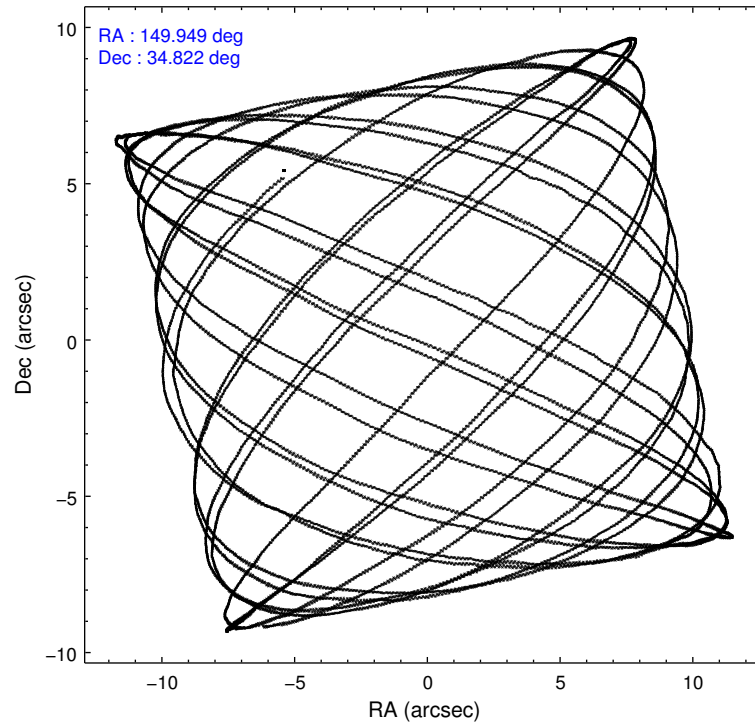
	ccd 7
level 1 events	24070
rejected events	12044
rejected %	50%

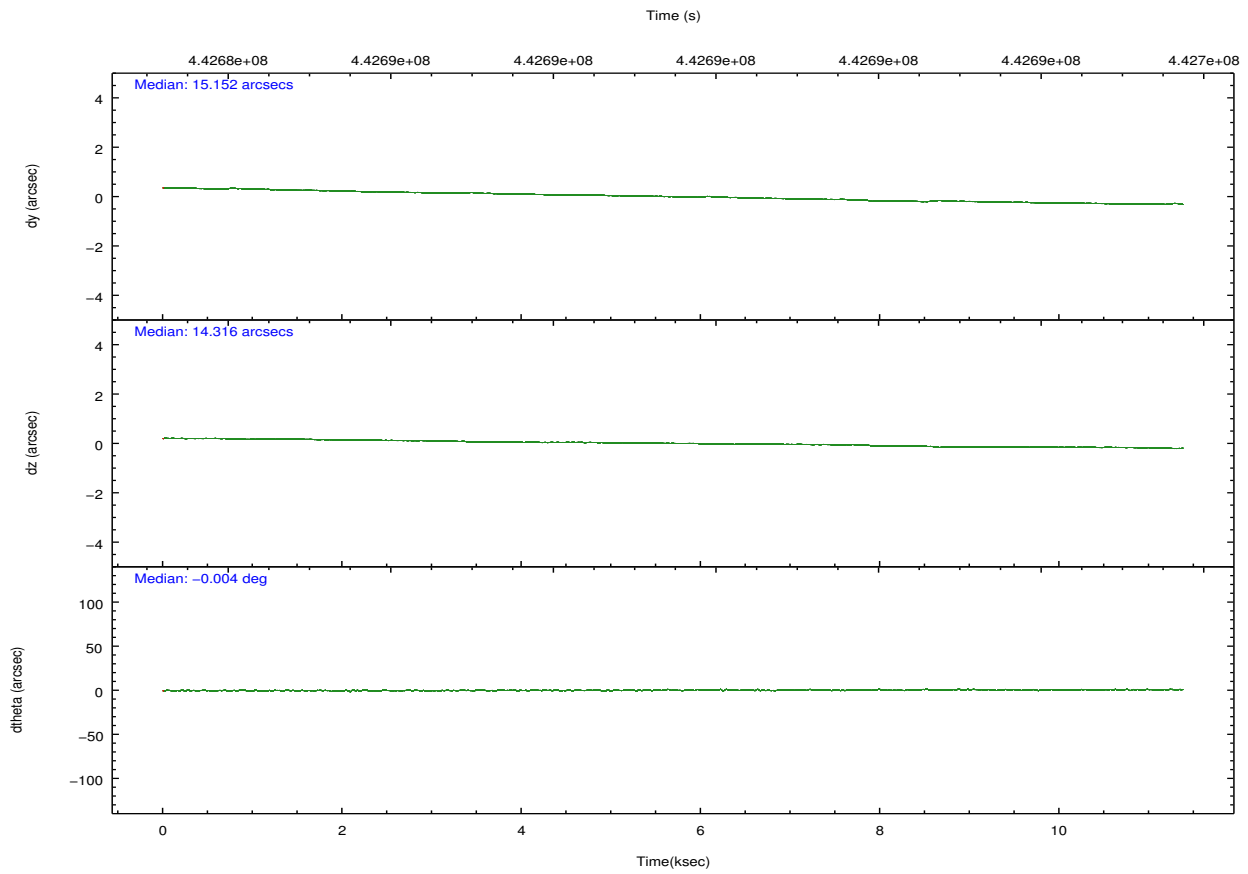
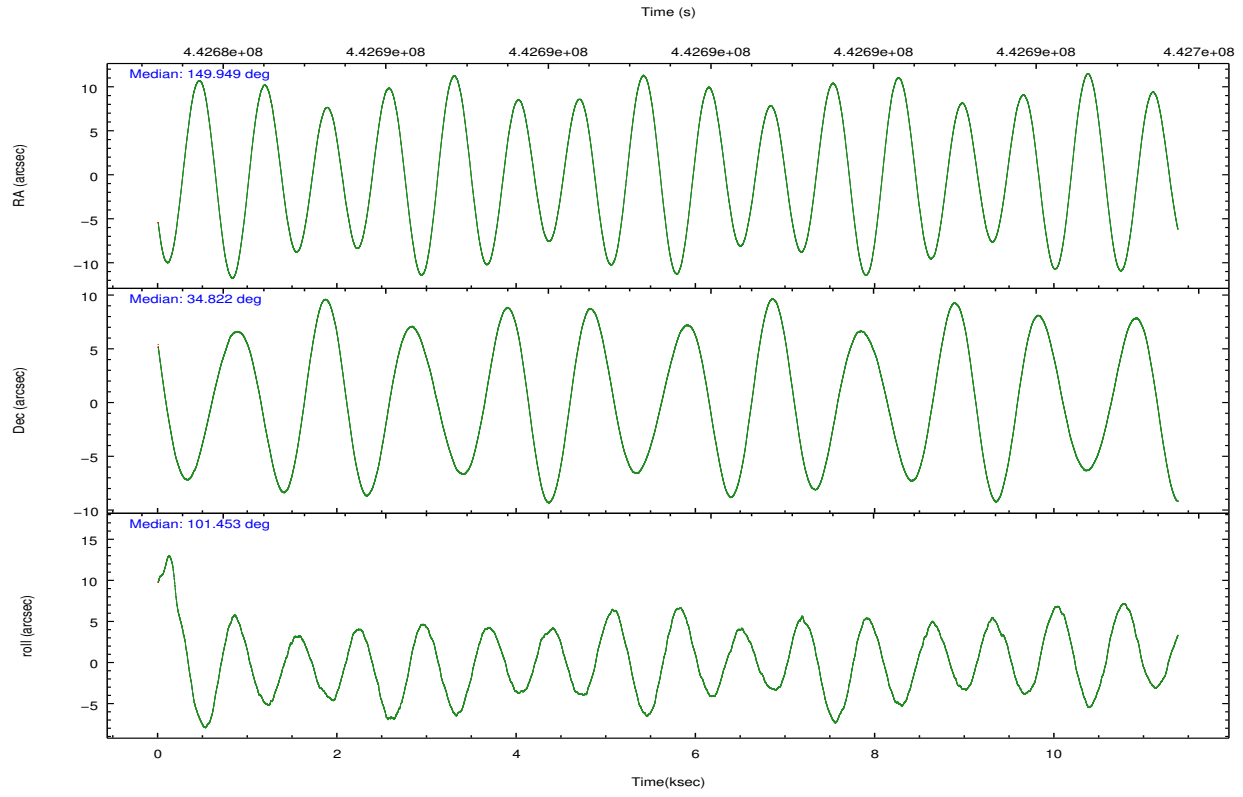
	ccd 7
grade 0 events	1386
	5%
grade 1 events	30
	0%
grade 2 events	2458
	10%
grade 3 events	1361
	5%
grade 4 events	1350
	5%
grade 5 events	2484
	10%
grade 6 events	5471
	22%
grade 7 events	9530
	39%

2.2 Compared Parameters

Parameter	Planned	Actual	Parameter	Planned	Actual
Instrument	ACIS	ACIS	Obspar format version number	7	7
Detector	ACIS-7	ACIS-7	Obspar file type	PREDICTED	ACTUAL
Grating	NONE	NONE	Obspar update status	NONE	UPDATED
Data mode	FAINT	FAINT	Number of optional ACIS chips dropped	0	0
Observation mode	POINTING	POINTING	On-chip summing requested	N	N
[deg] Pointing RA	149.971444	149.9490404520309	Subarray requested	CUSTOM	1/4
[deg] Pointing Dec	34.801862	34.82208488759854	Subarray start row	385	385
[deg] Pointing Roll	101.287916	101.457340317083	Subarray row count	256	256
[mm] SIM focus pos	-0.684267	-0.6828225247311905	Alternating exposures requested	N	N
[mm] SIM defocus	0	0.001444936568705701	[s] Primary exposure time	0.000000	0.8
[mm] SIM translation stage pos	-190.132523	-190.1400660498719			
[mm] SIM translation stage offset	0	0.00754346686406393			
[s] Observation start time (MET)	442684161.184000	442683507.86947			
Observation start date	2012-01-11T15:48:15	2012-01-11T15:38:27			
[s] Observation end time (MET)	442695161.184000	442695654.12011			
Observation end date	2012-01-11T18:51:35	2012-01-11T19:00:54			
Read mode	TIMED	TIMED			

2.3 Aspect



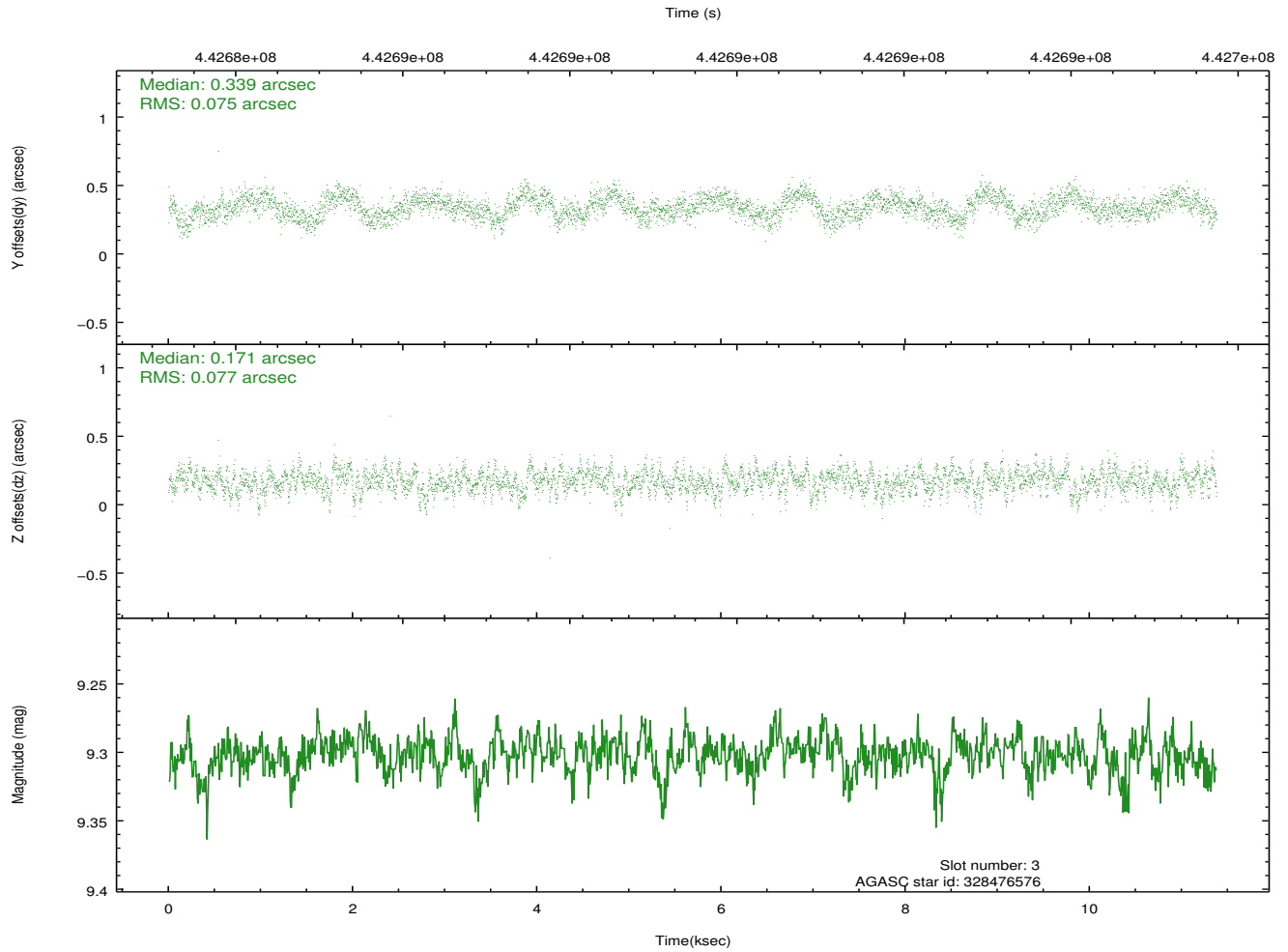
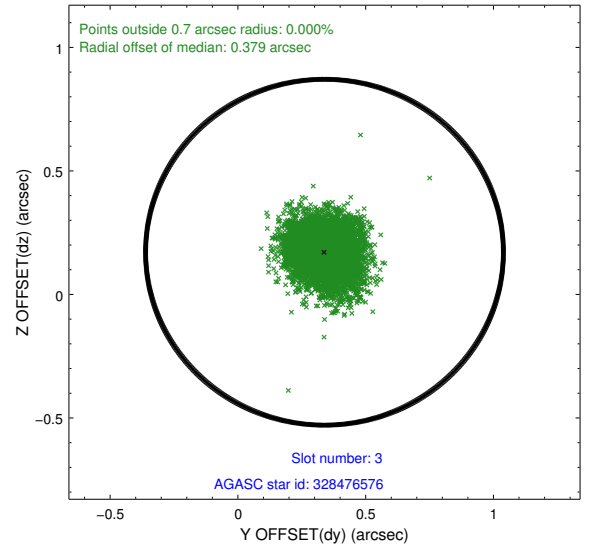
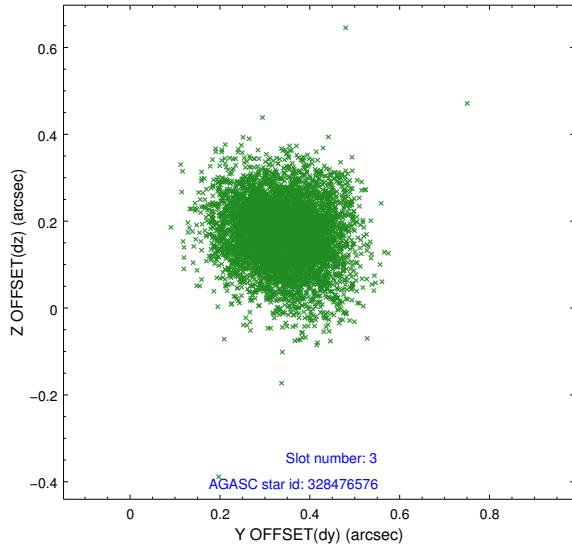


Slot Statistics

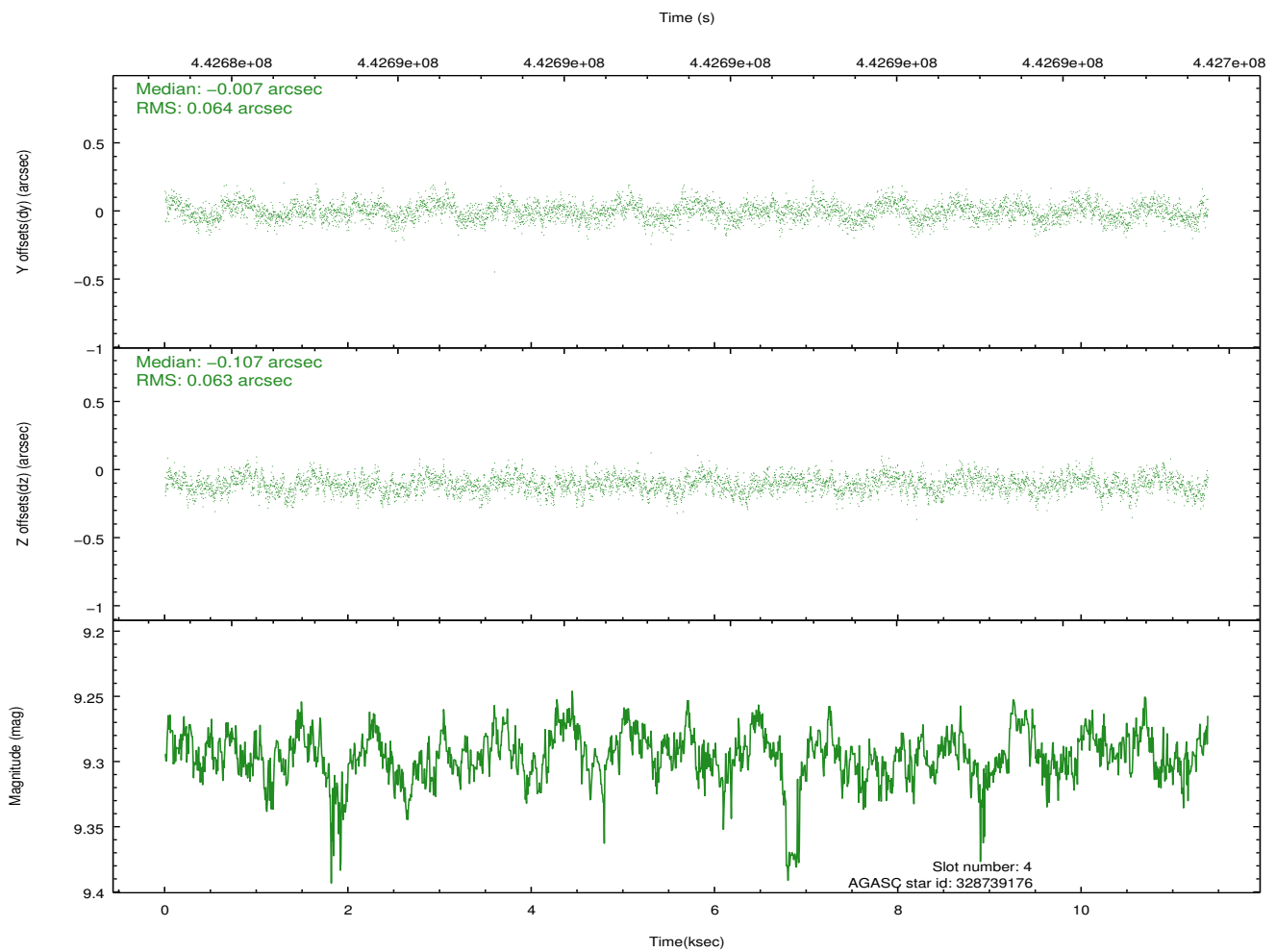
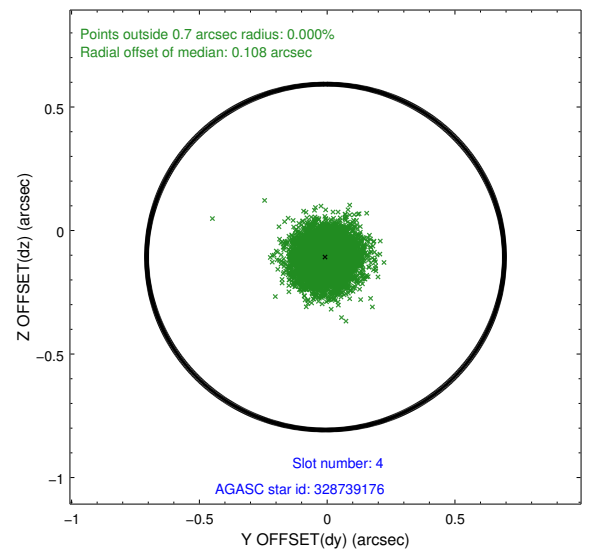
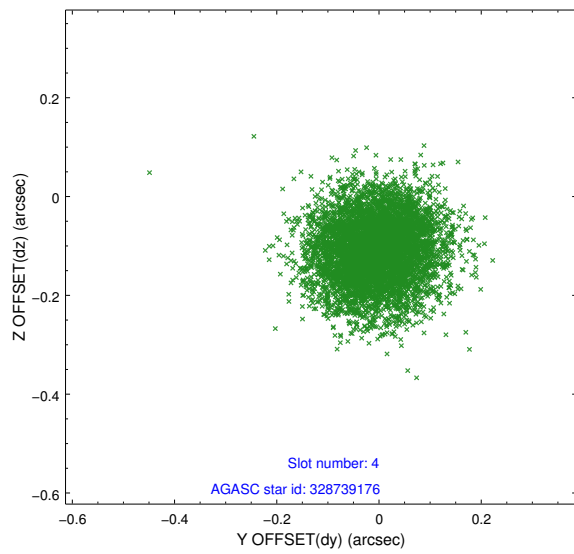
slot	status	id	mag	n_pts	med_dy	med_dz	dr1	dr2	ra	dec	mean_y	mean_z
0	FID	ACIS-S-2	7.00	2776	-0.120	-0.034	0.010	0.015	0.000000	0.000000	-768.25	-1735.70
1	FID	ACIS-S-4	7.09	2776	0.250	0.067	0.006	0.010	0.000000	0.000000	2145.20	172.39
2	FID	ACIS-S-5	7.12	2776	-0.163	-0.024	0.010	0.017	0.000000	0.000000	-1820.55	166.51
3	GUIDE	328476576	9.30	5547	0.339	0.171	0.114	0.183	150.315227	34.640046	-768.43	-884.47
4	GUIDE	328739176	9.30	5541	-0.007	-0.107	0.098	0.154	149.355944	35.164878	1641.64	1519.33
5	GUIDE	328739528	7.96	5547	-0.062	-0.159	0.111	0.167	149.087611	35.326838	2372.57	2175.18
6	GUIDE	328740200	6.47	5551	-0.185	-0.092	0.089	0.136	149.456529	35.124527	1440.15	1259.07
7	GUIDE	328860336	9.57	5541	-0.088	0.201	0.126	0.215	150.014848	35.089939	992.46	-327.91

2.4 Star Slots

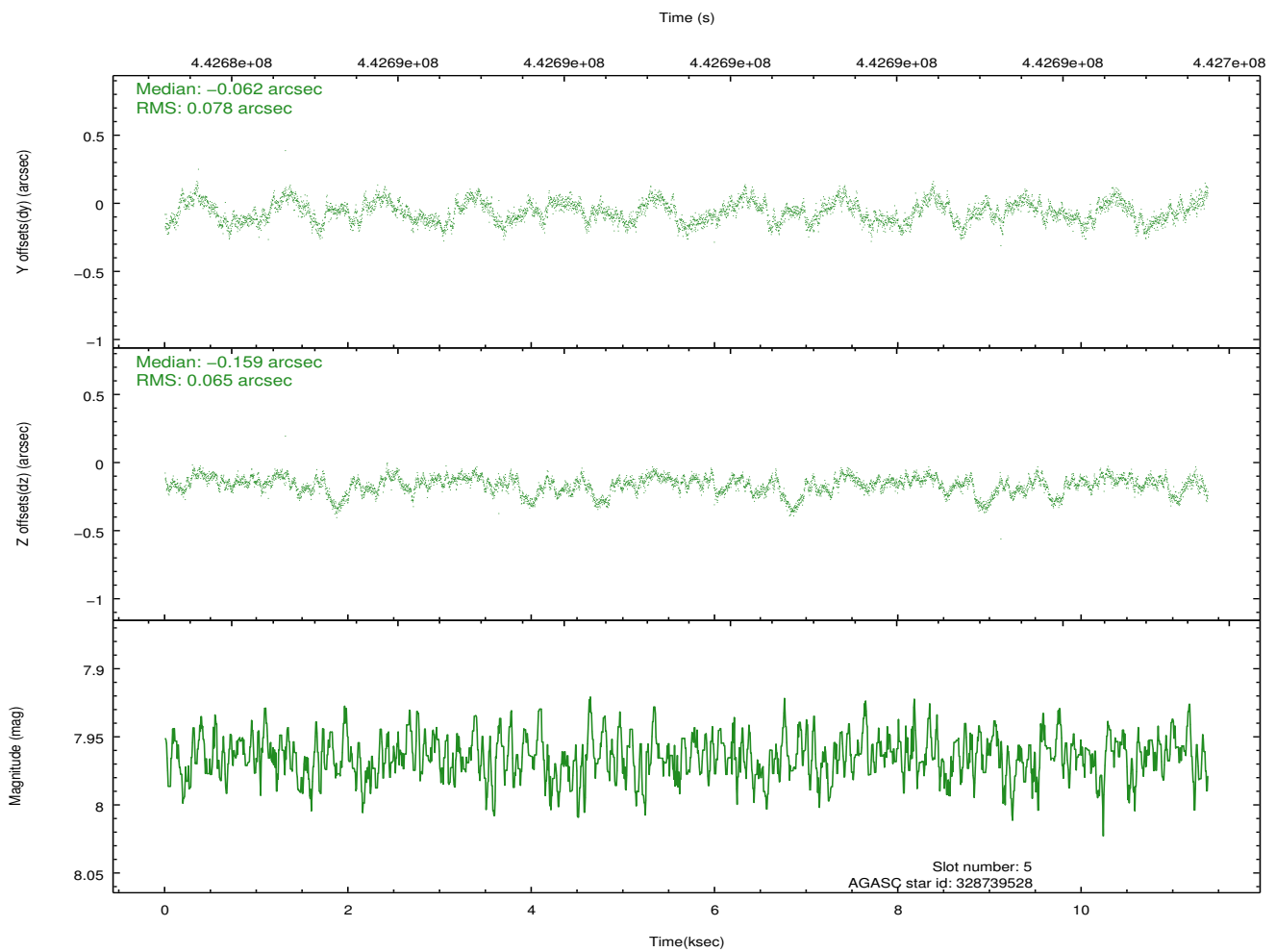
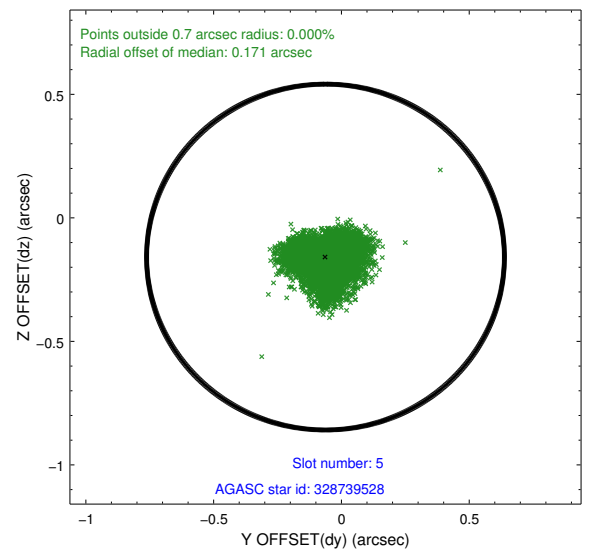
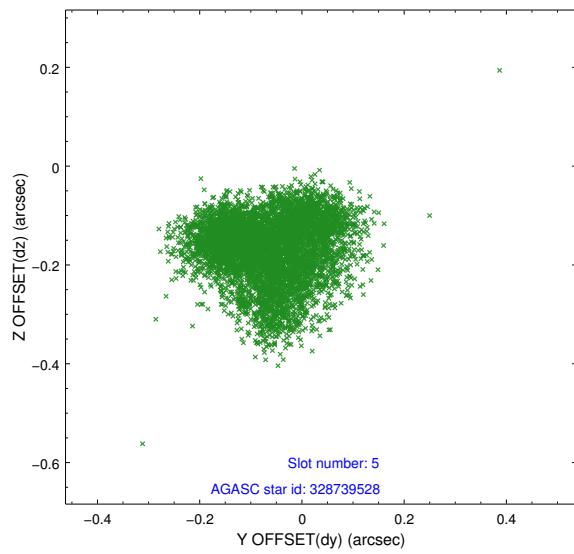
2.4.1 Slot 3



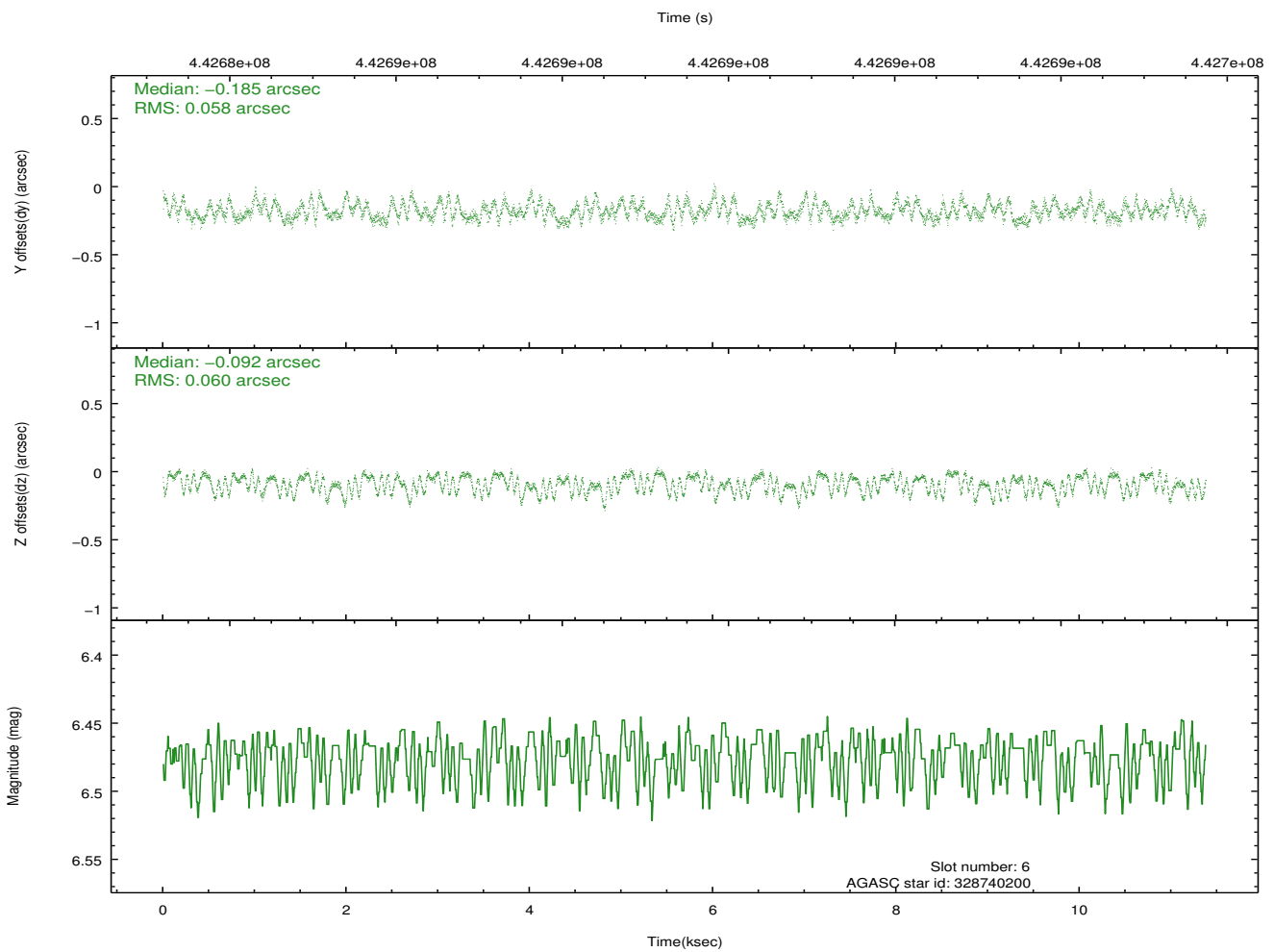
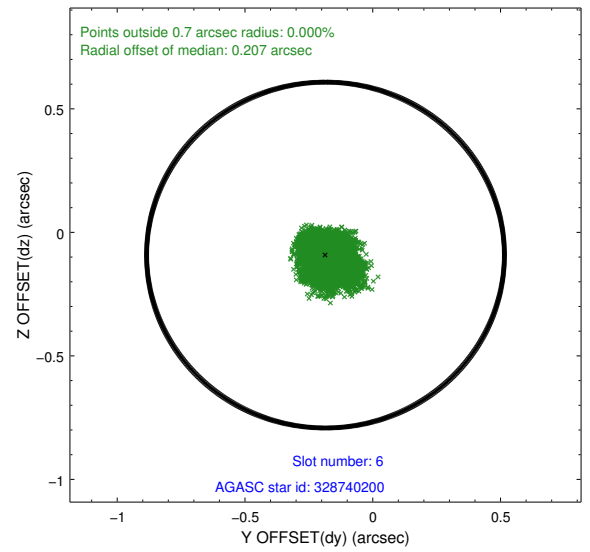
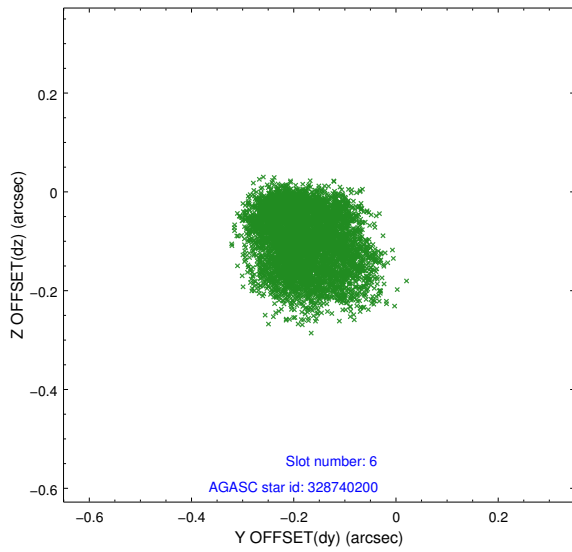
2.4.2 Slot 4



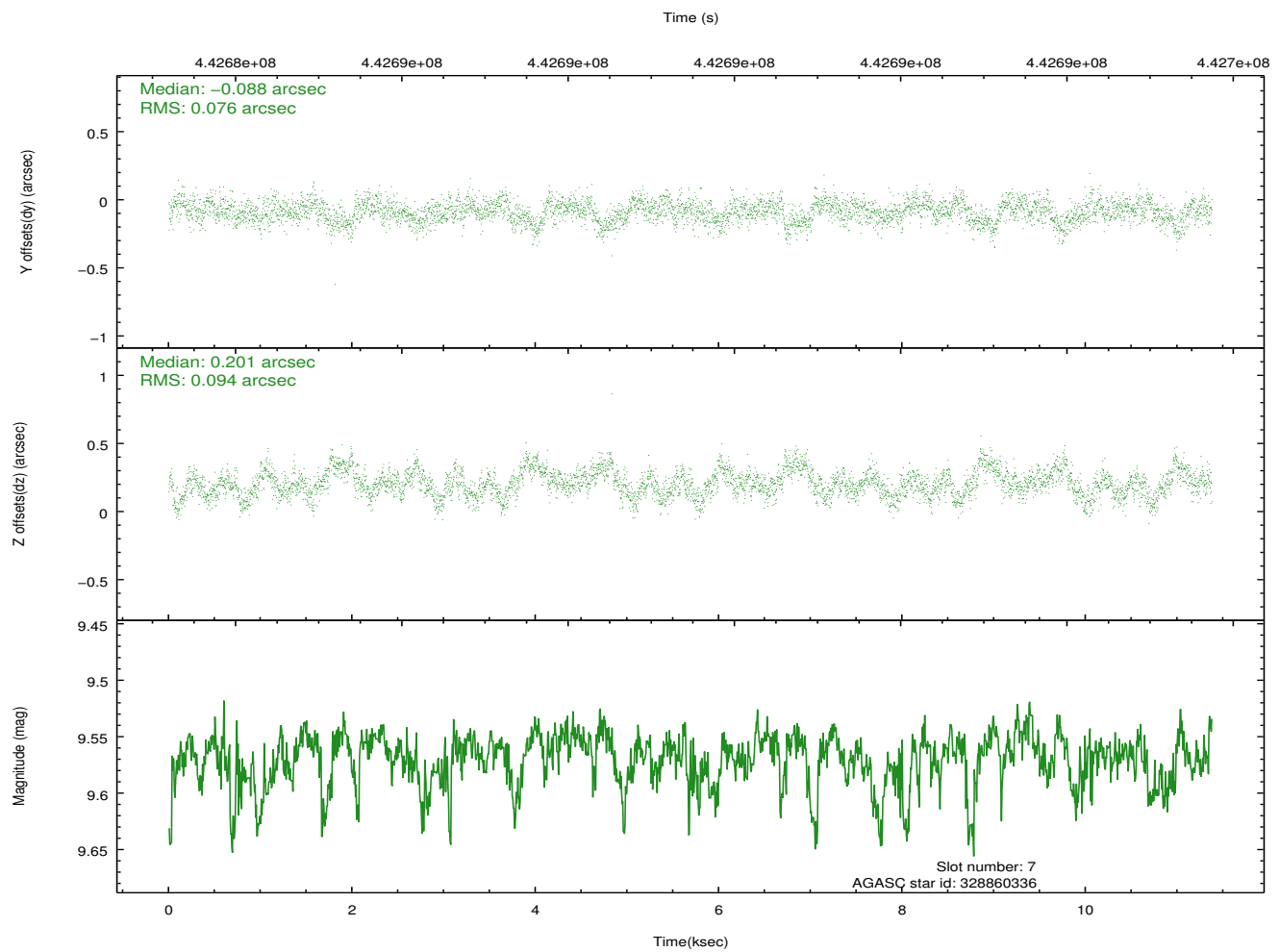
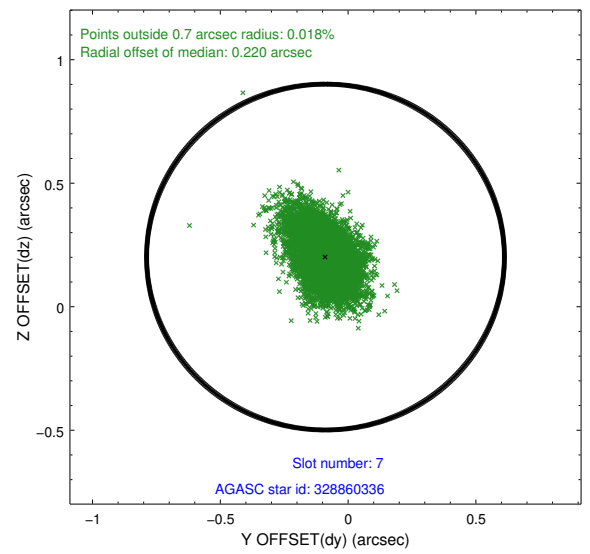
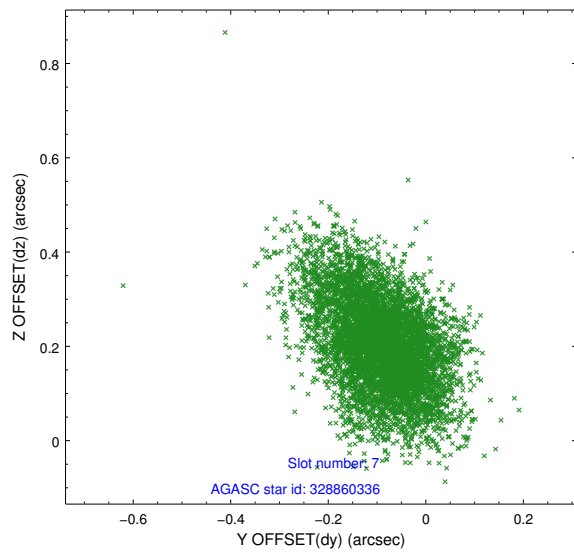
2.4.3 Slot 5



2.4.4 Slot 6

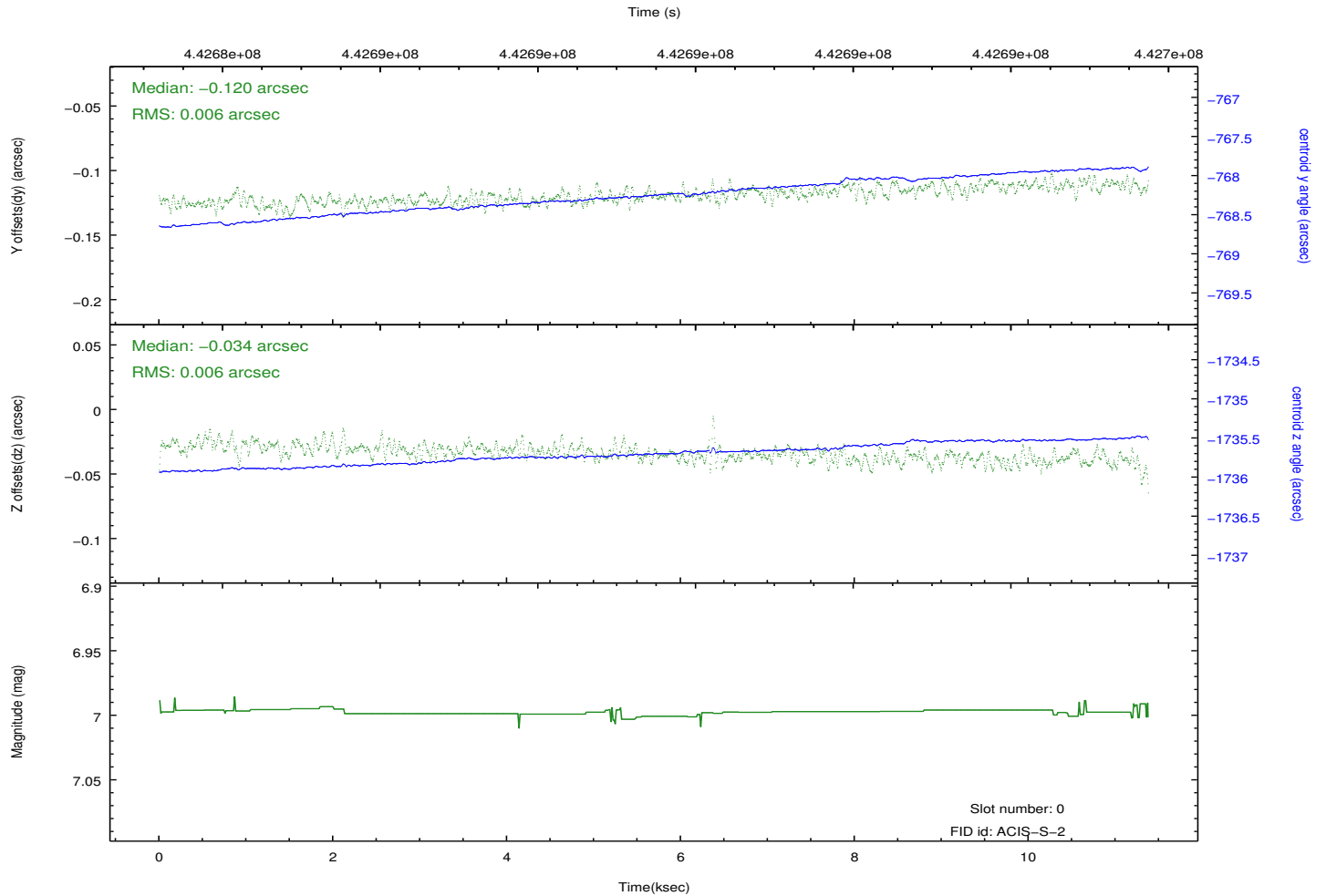
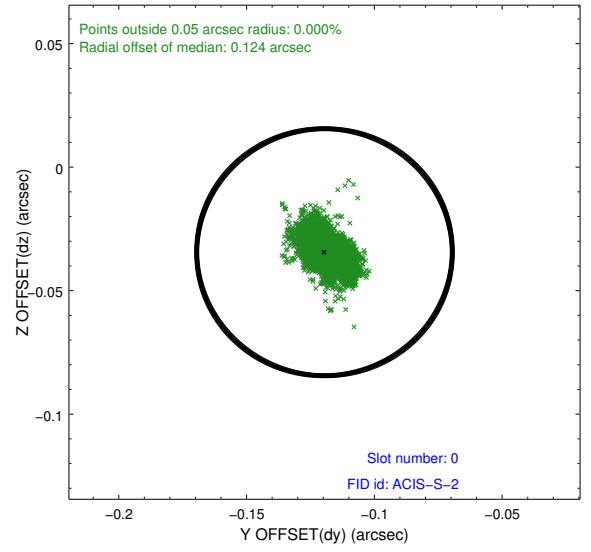
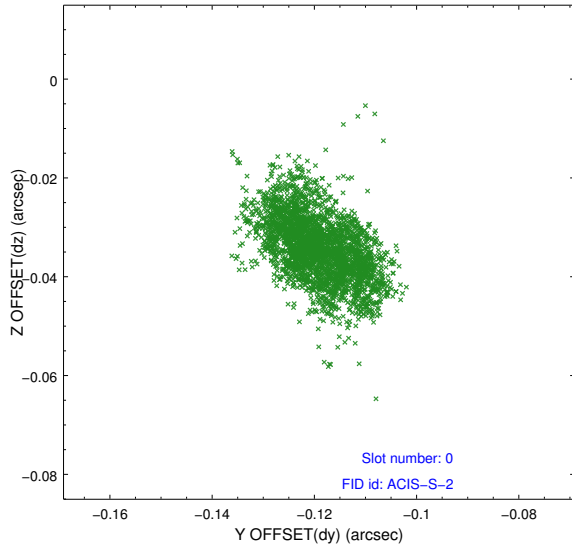


2.4.5 Slot 7

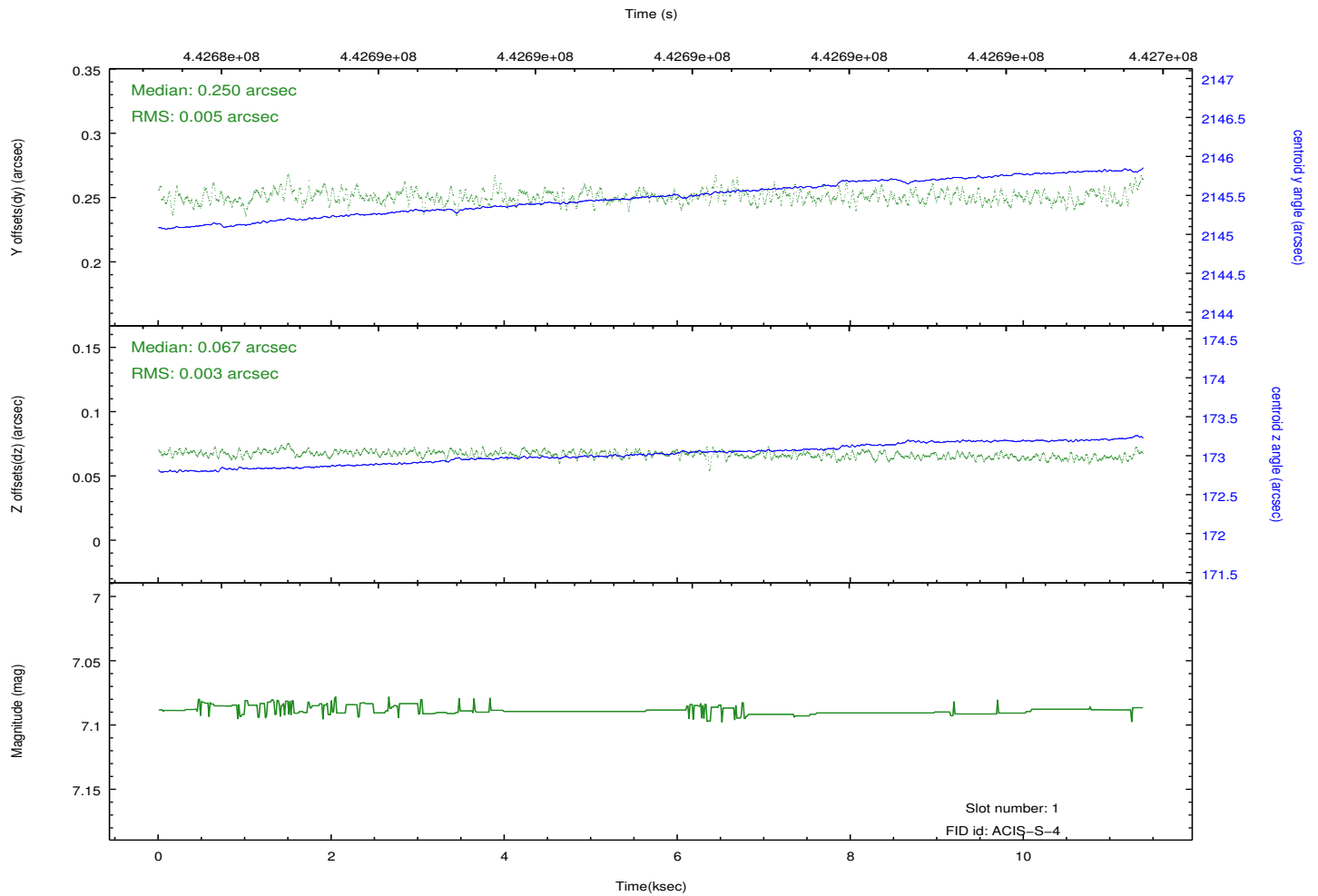
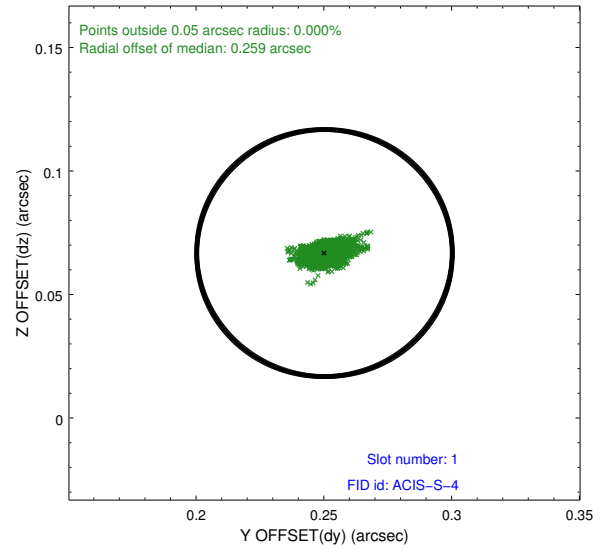
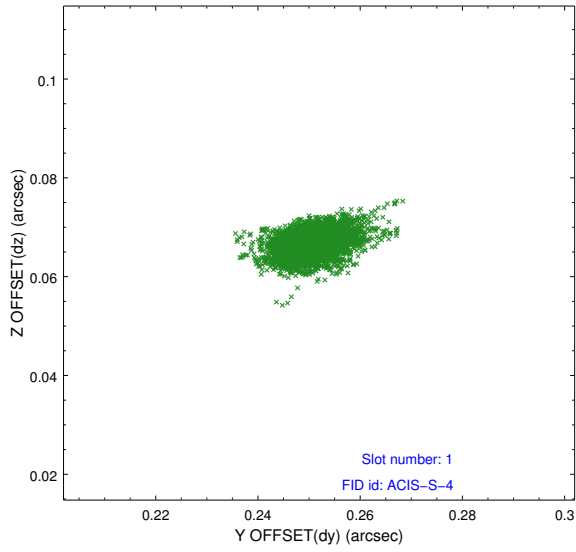


2.5 FID Slots

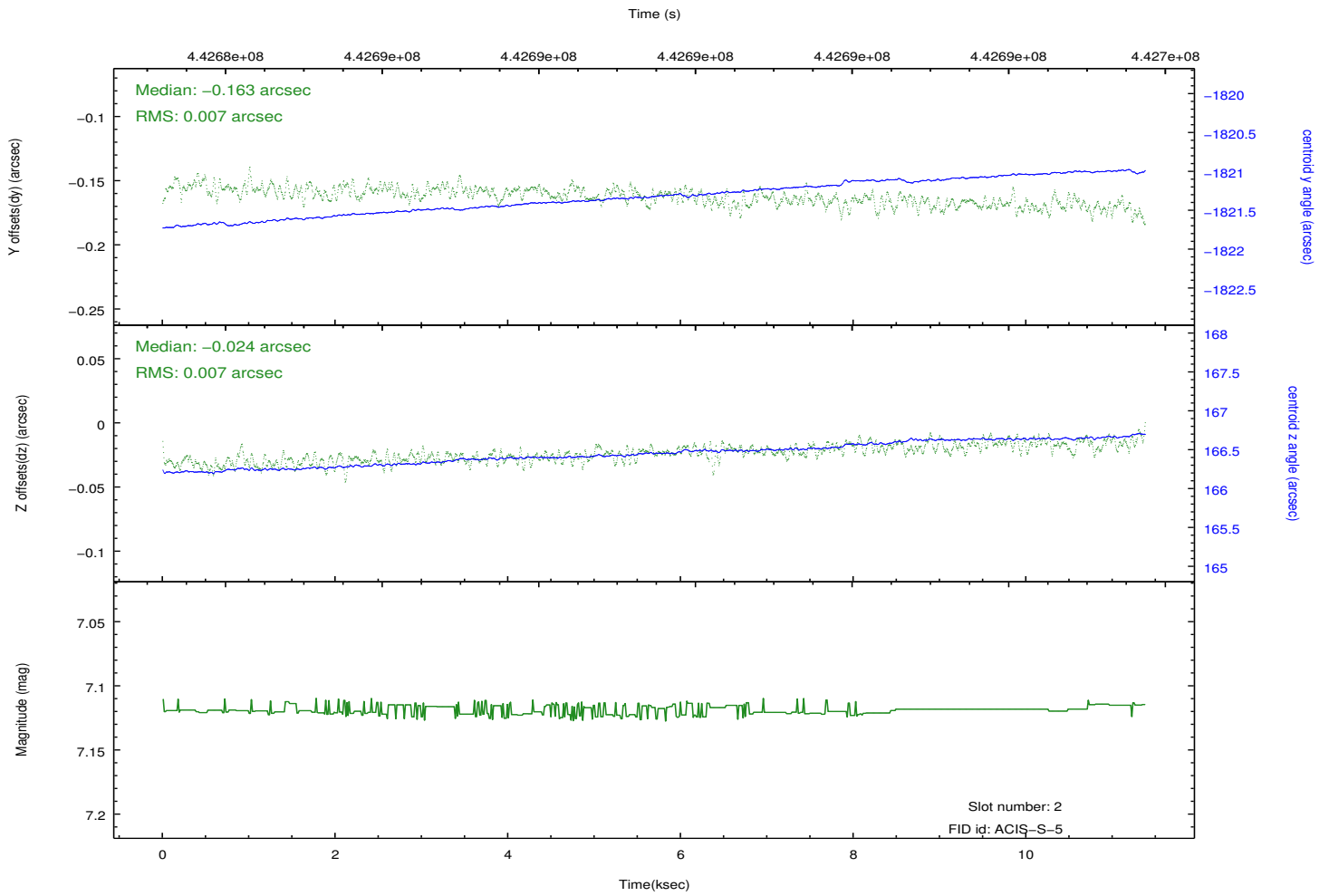
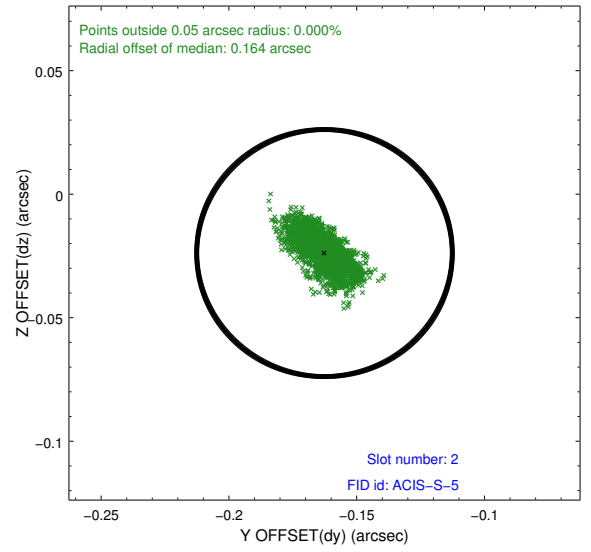
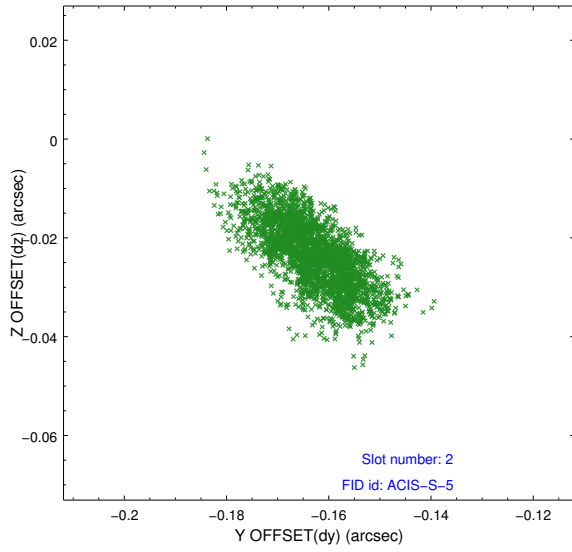
2.5.1 Slot 0



2.5.2 Slot 1



2.5.3 Slot 2



A Summary

A.1 Status

V&V Scientist	Jen Lauer
V&V Date (YYYY-MM-DD)	2012.01.12
V&V Edition	1
V&V Disposition and Status	OK
V&V Charge Time	11.026400164366

A.2 Comments