

V&V Reference Report

L2 ASCDS Version : 8.4.5

Observation 13126 - L2 Version 2
Chandra X-Ray Center

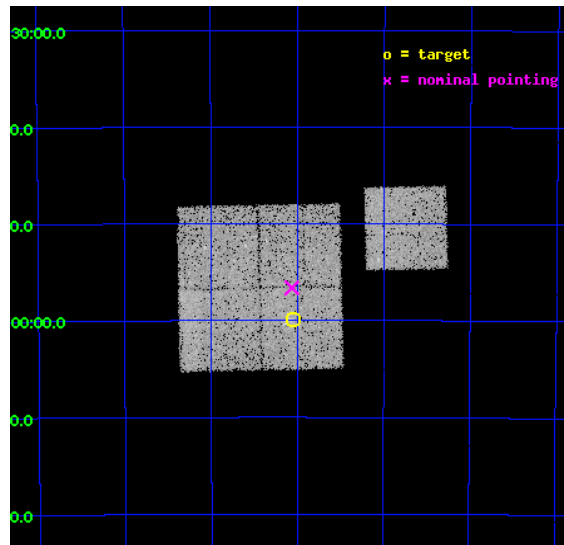
L2 Processing Date : Jul 3 2012

Contents

1	Front	2
2	OBI	3
2.1	OBI	3
2.1.1	Images	3
2.1.2	Bias	3
2.1.3	Parameters	4
2.1.4	Events	4
2.2	Compared Parameters	5
2.3	Aspect	6
2.4	Star Slots	9
2.4.1	Slot 3	9
2.4.2	Slot 4	10
2.4.3	Slot 5	11
2.4.4	Slot 6	12
2.4.5	Slot 7	13
2.5	FID Slots	14
2.5.1	Slot 0	14
2.5.2	Slot 1	15
2.5.3	Slot 2	16
A	Summary	17
A.1	Status	17
A.2	Comments	17

1 Front

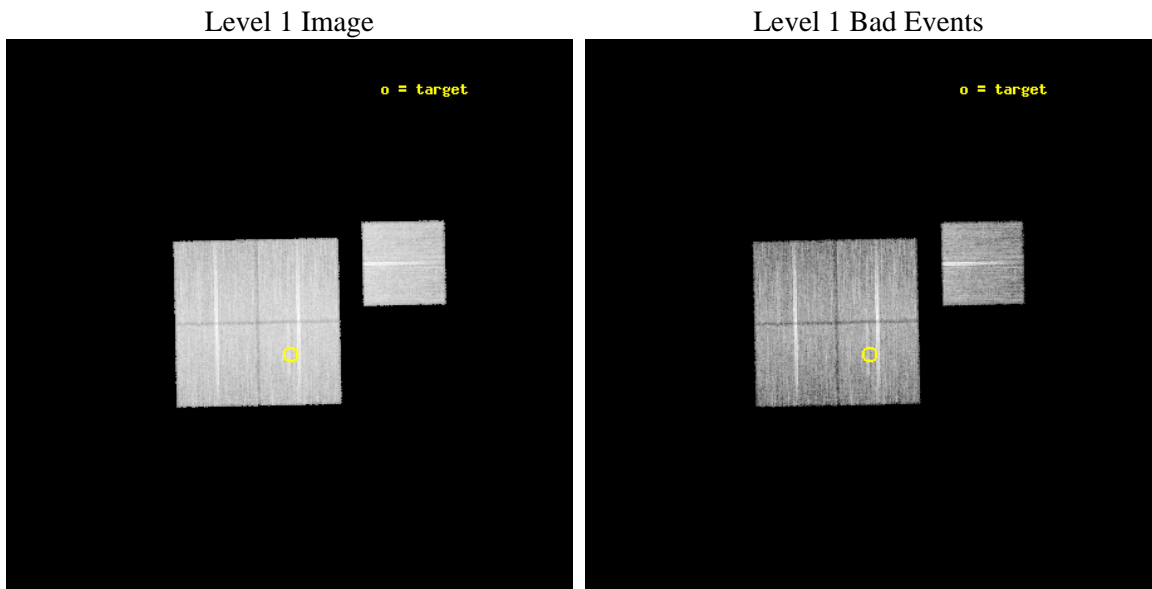
seq_num	800887	Sequence number
obs_id	13126	Observation id
title	Chandra Observations of a Complete Sample of SZE Selected Galaxy Clusters	Proposal title
observer	Dr Joseph Mohr	Principal investigator
object	SPT-CL 0528-5300	Source name
dtcycle	0	
cycle	P	events from which exps? Prim/Second/Both
ra_targ	82.010833	Observer's specified target RA [deg]
dec_targ	-52.998	Observer's specified target Dec [deg]
ra_nom	82.015928882807	Nominal RA [deg]
dec_nom	-52.943713958825	Nominal Dec [deg]
roll_nom	88.812765226706	Nominal Roll [deg]
revision	2	Processing version of data
ontime	18552.797975242	Sum of GTIs [s]
livetime	18310.392011324	Livetime [s]
ontime0	18552.674855232	Sum of GTIs [s]
ontime1	18552.715895236	Sum of GTIs [s]
ontime2	18552.756935239	Sum of GTIs [s]
ontime3	18552.797975242	Sum of GTIs [s]
ontime6	18552.633815229	Sum of GTIs [s]
l2events	62630	Number of level 2 events



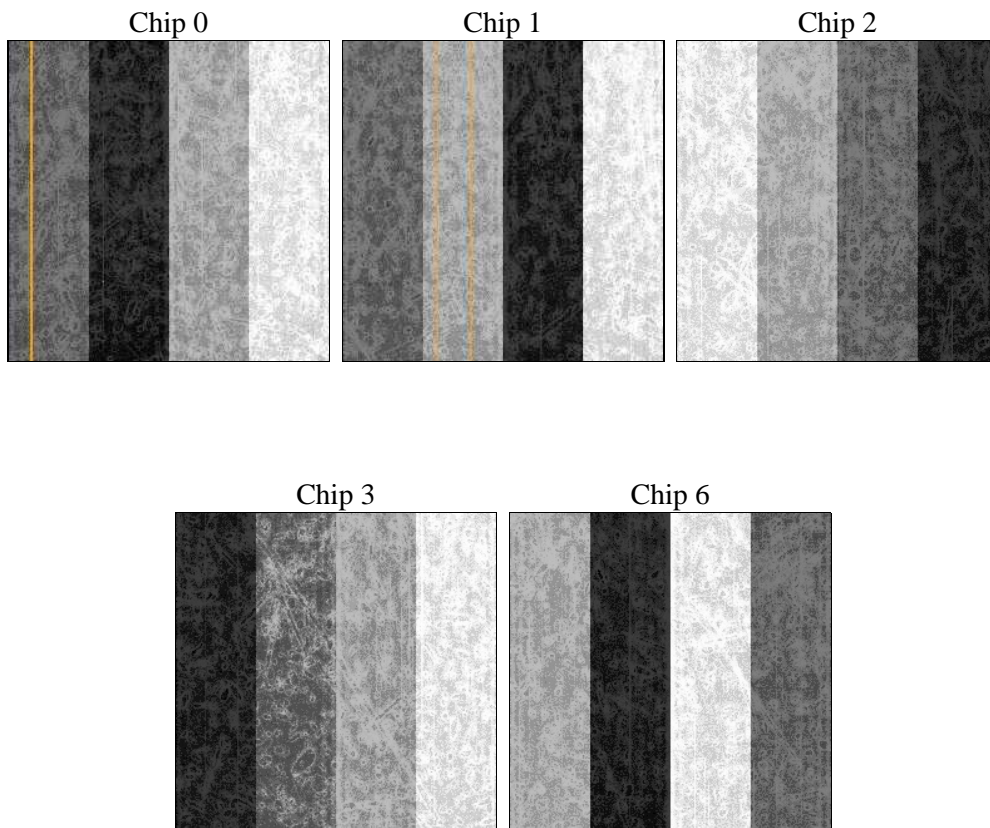
2 OBI

2.1 OBI

2.1.1 Images



2.1.2 Bias



2.1.3 Parameters

obi_num	0	Obi number	sched_exp_time	18500.000000	[s] Scheduled observation exposure time
ascdsver	8.4.5	Processing system revision	ontime	18552.797975242	Sum of GTIs [s]
caldbver	4.5.0	 	ontime0	18552.674855232	Sum of GTIs [s]
date	2012-07-03T08:57:34	Date and time of file creation	ontime1	18552.715895236	Sum of GTIs [s]
revision	2	Processing version of data	ontime2	18552.756935239	Sum of GTIs [s]
			ontime3	18552.797975242	Sum of GTIs [s]
			ontime6	18552.633815229	Sum of GTIs [s]
			l1events	646245	Number of level 1 events

2.1.4 Events

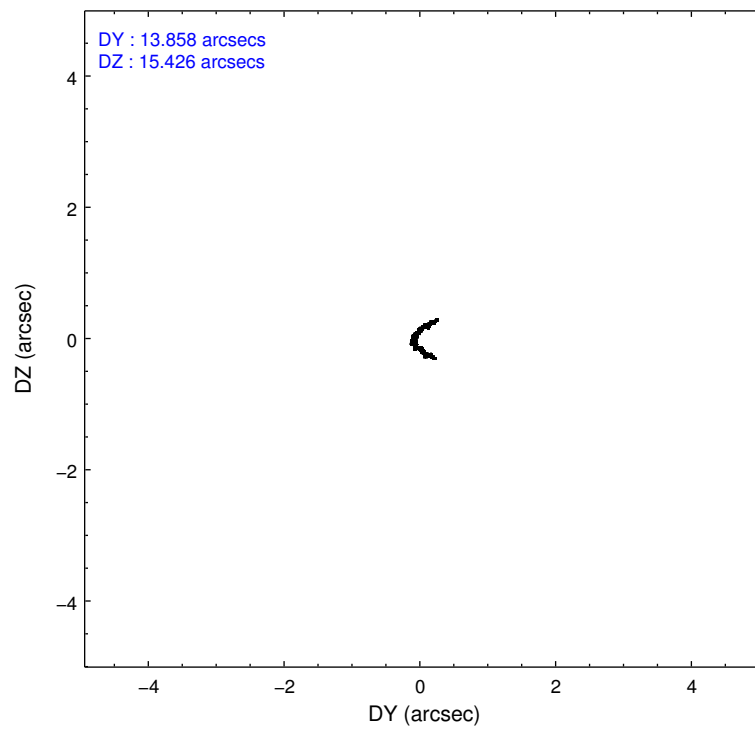
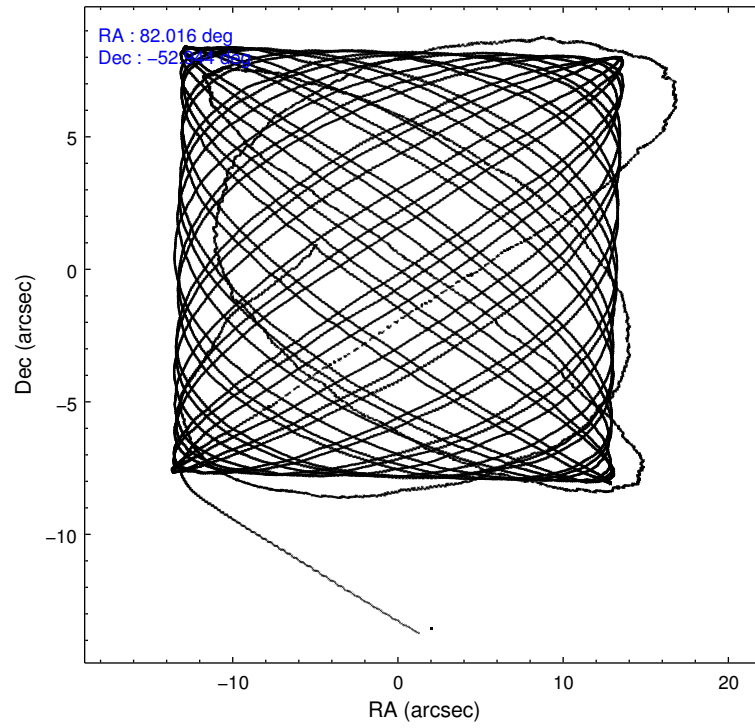
	ccd 0	ccd 1	ccd 2	ccd 3	ccd 6
level 1 events	122473	121696	138264	131492	132320
rejected events	107648	105534	123456	117319	117252
rejected %	87%	86%	89%	89%	88%

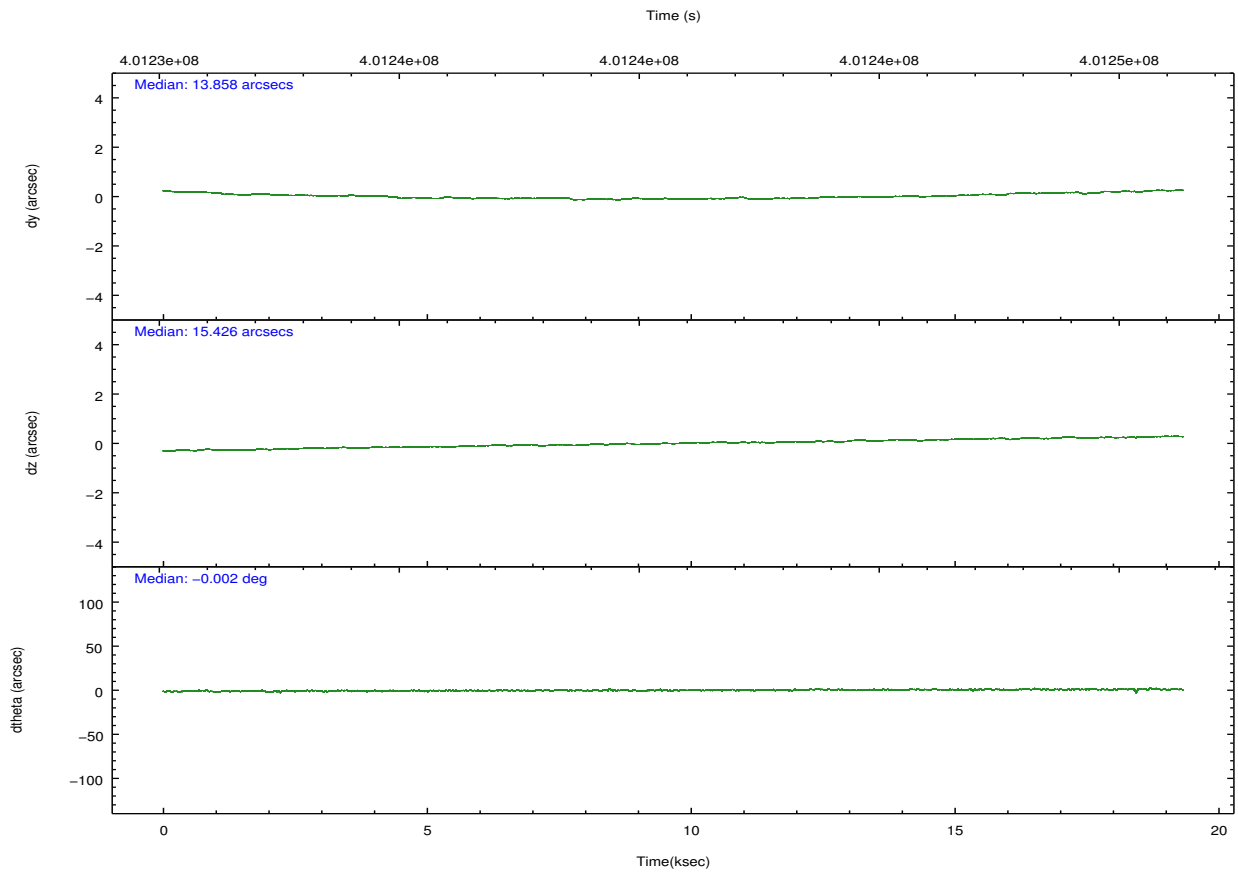
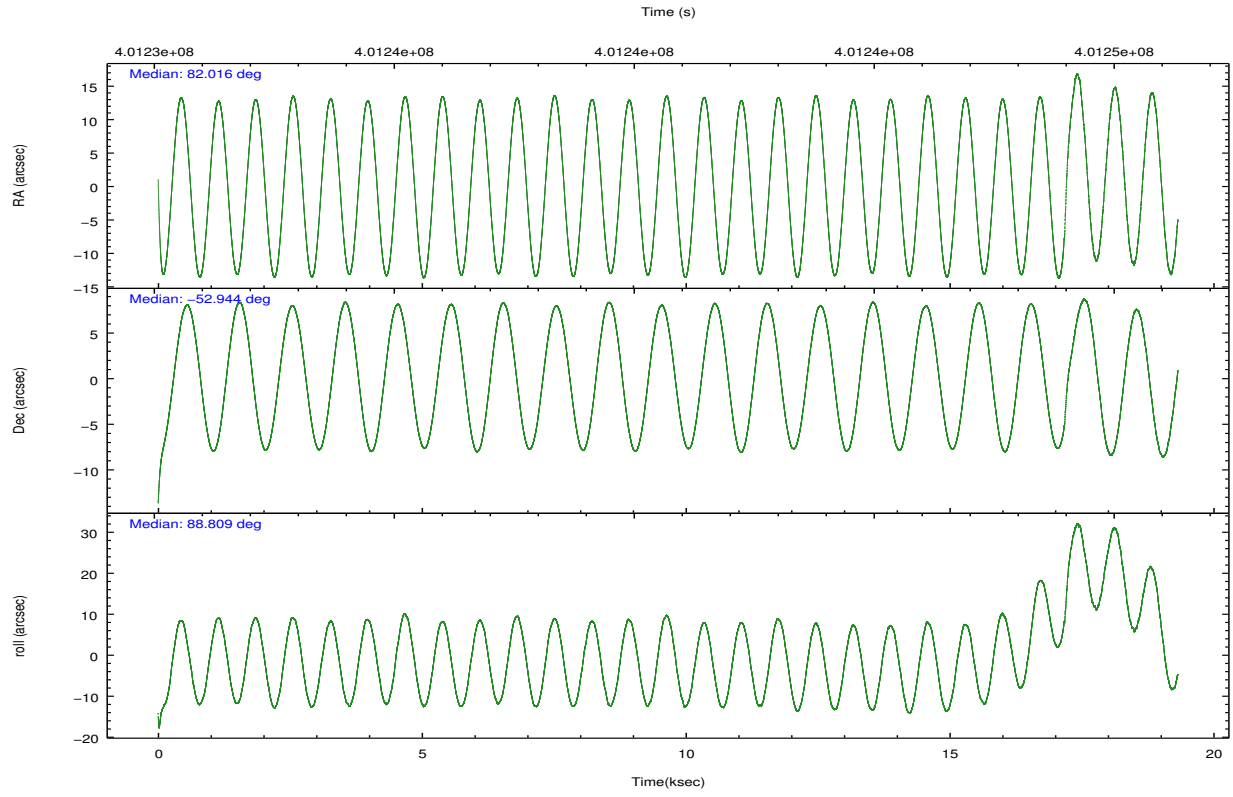
	ccd 0	ccd 1	ccd 2	ccd 3	ccd 6
grade 0 events	5200	5799	5308	5117	5169
	4%	4%	3%	3%	3%
grade 1 events	68	62	100	91	64
	0%	0%	0%	0%	0%
grade 2 events	3627	3745	3777	3126	3391
	2%	3%	2%	2%	2%
grade 3 events	1607	1636	1468	1538	1615
	1%	1%	1%	1%	1%
grade 4 events	1475	1661	1545	1515	1597
	1%	1%	1%	1%	1%
grade 5 events	5486	5883	5151	6309	5976
	4%	4%	3%	4%	4%
grade 6 events	2921	3325	2714	2880	3297
	2%	2%	1%	2%	2%
grade 7 events	102089	99585	118201	110916	111211
	83%	81%	85%	84%	84%

2.2 Compared Parameters

Parameter	Planned	Actual	Parameter	Planned	Actual
Instrument	ACIS	ACIS	Obspar format version number	7	7
Detector	ACIS-01236	ACIS-01236	Obspar file type	PREDICTED	ACTUAL
Grating	NONE	NONE	Obspar update status	NONE	UPDATED
Data mode	VFAINT	VFAINT	CCD I0 on	Y	Y
Observation mode	POINTING	POINTING	CCD I1 on	Y	Y
[deg] Pointing RA	82.038087	82.01592888280658	CCD I2 on	Y	Y
[deg] Pointing Dec	-52.967711	-52.94371395882474	CCD I3 on	Y	Y
[deg] Pointing Roll	88.621757	88.81276522670569	CCD S0 on	N	N
[mm] SIM focus pos	-0.782348	-0.7809083437167272	CCD S1 on	N	N
[mm] SIM defocus	0	0.001439871863259334	CCD S2 on	O1	Y
[mm] SIM translation stage pos	-225.840463	-225.8433433320239	CCD S3 on	N	N
[mm] SIM translation stage offset	-7.752	-7.749109670905796	CCD S4 on	N	N
[s] Observation start time (MET)	401231856.184000	401230224.1343	CCD S5 on	N	N
Observation start date	2010-09-18T21:16:30	2010-09-18T20:50:24	Number of optional ACIS chips dropped	0	0
[s] Observation end time (MET)	401250356.184000	401250760.01035	On-chip summing requested	N	N
Observation end date	2010-09-19T02:24:50	2010-09-19T02:32:40	Subarray requested	NONE	NONE
Read mode	TIMED	TIMED	Alternating exposures requested	N	N
			[s] Primary exposure time	0.000000	3.1

2.3 Aspect



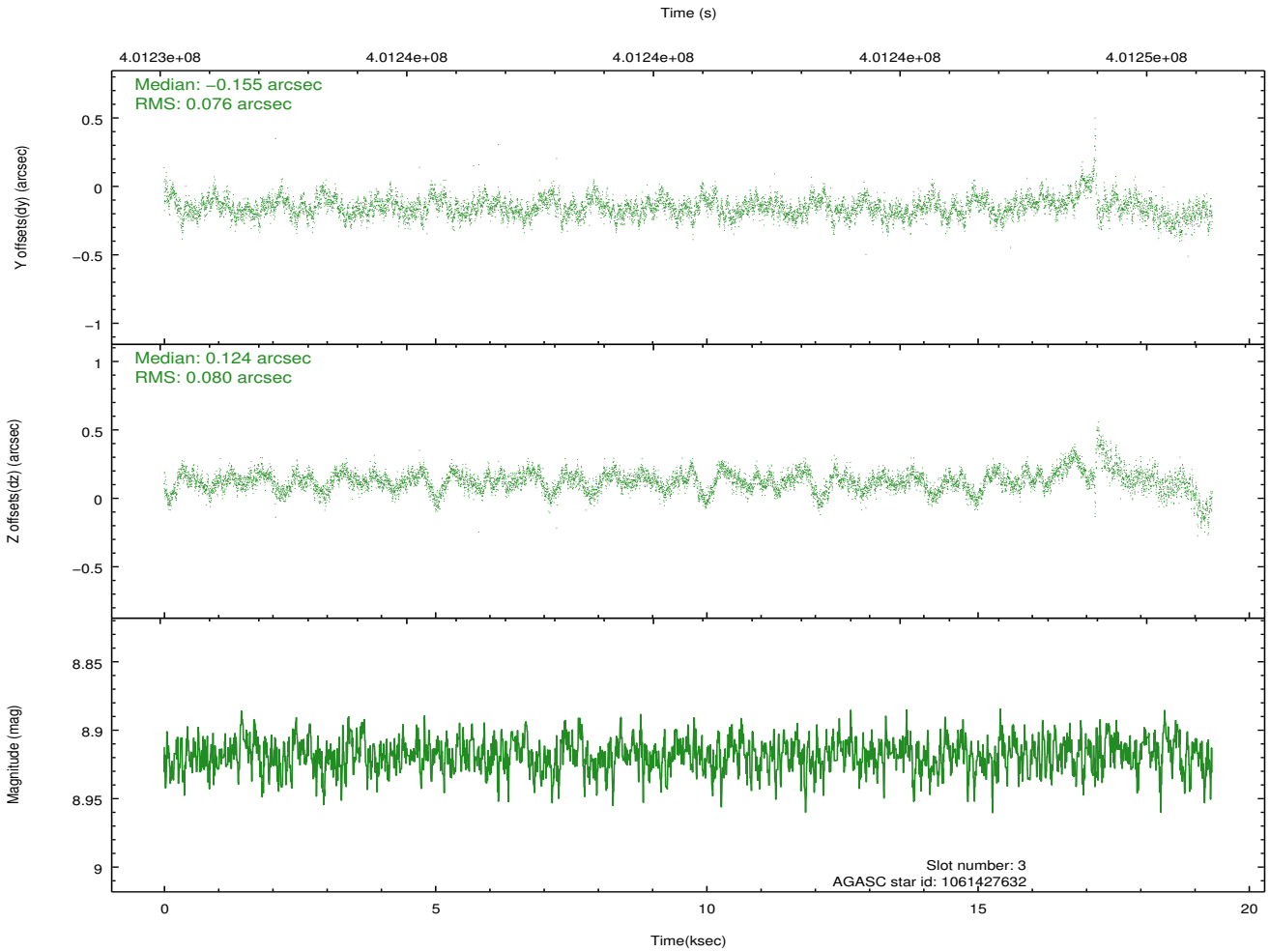
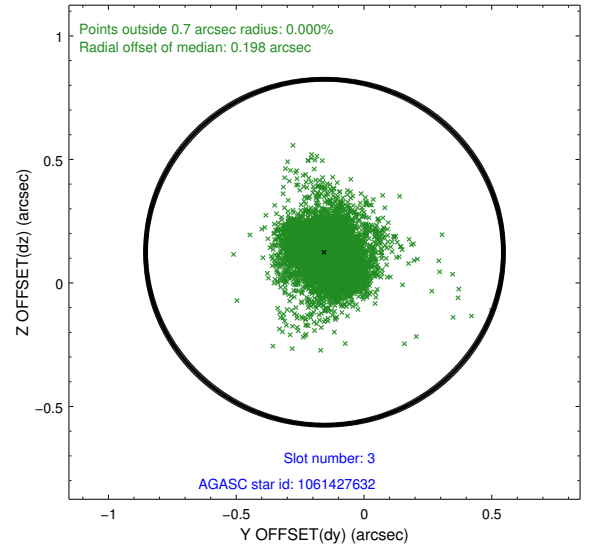
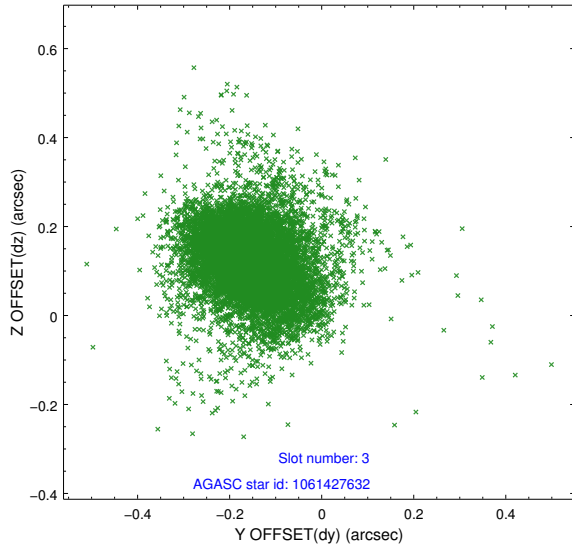


Slot Statistics

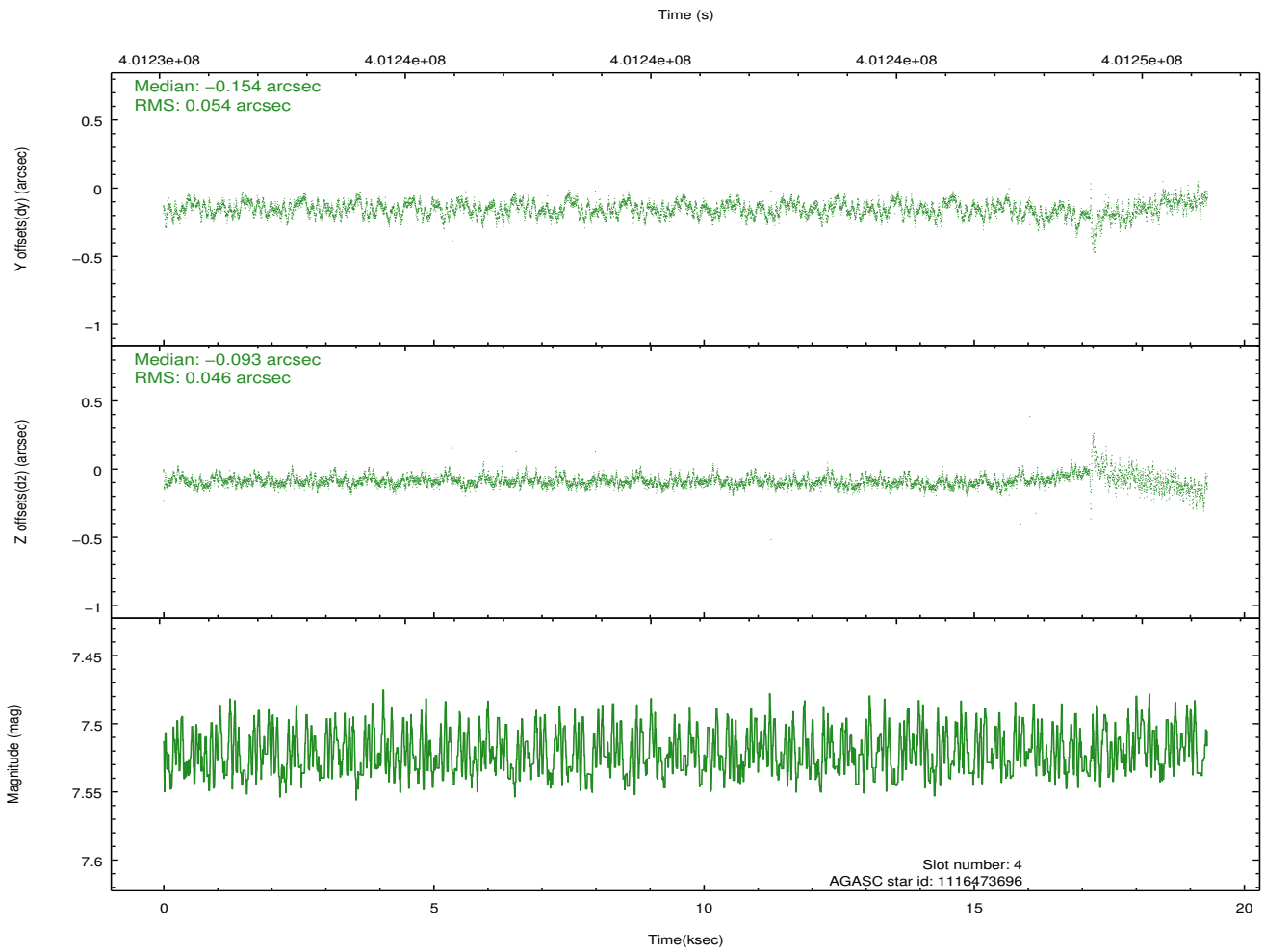
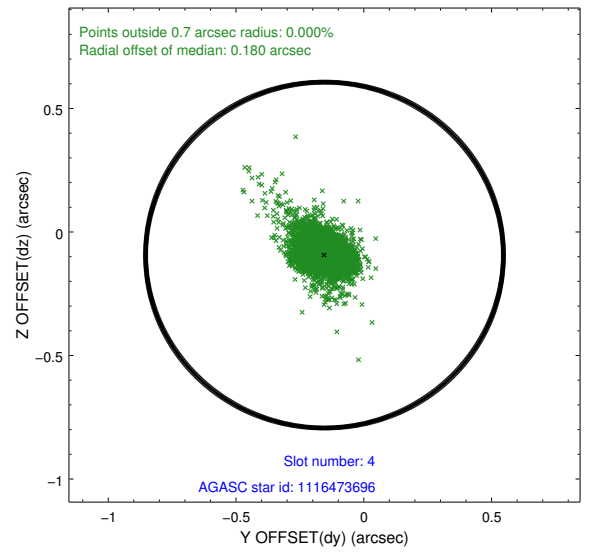
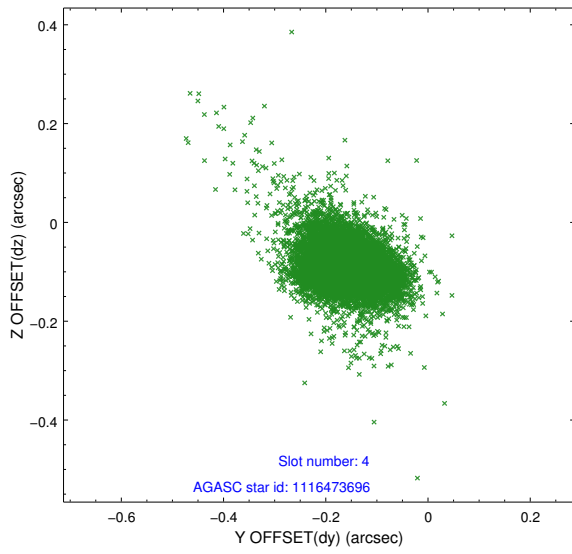
slot	status	id	mag	n_pts	med_dy	med_dz	dr1	dr2	ra	dec	mean_y	mean_z
0	FID	ACIS-I-1	7.01	4712	0.121	-0.096	0.010	0.017	0.000000	0.000000	925.60	-998.20
1	FID	ACIS-I-5	7.00	4713	-0.302	0.091	0.010	0.017	0.000000	0.000000	-1822.84	899.32
2	FID	ACIS-I-6	7.02	4712	0.087	0.075	0.009	0.017	0.000000	0.000000	390.87	1544.05
3	GUIDE	1061427632	8.92	9416	-0.155	0.124	0.109	0.199	82.581997	-52.440638	1921.77	-1147.42
4	GUIDE	1116473696	7.52	9422	-0.154	-0.093	0.069	0.120	81.306955	-52.676900	1000.42	1620.46
5	GUIDE	1116477608	8.19	9423	-0.034	0.078	0.069	0.122	82.436900	-53.265653	-1053.66	-884.04
6	GUIDE	1116479144	8.04	9424	-0.118	-0.124	0.095	0.166	81.040684	-53.428803	-1725.98	2098.29
7	GUIDE	1116480536	8.45	9424	0.453	0.007	0.091	0.157	81.460168	-53.582672	-2247.40	1181.75

2.4 Star Slots

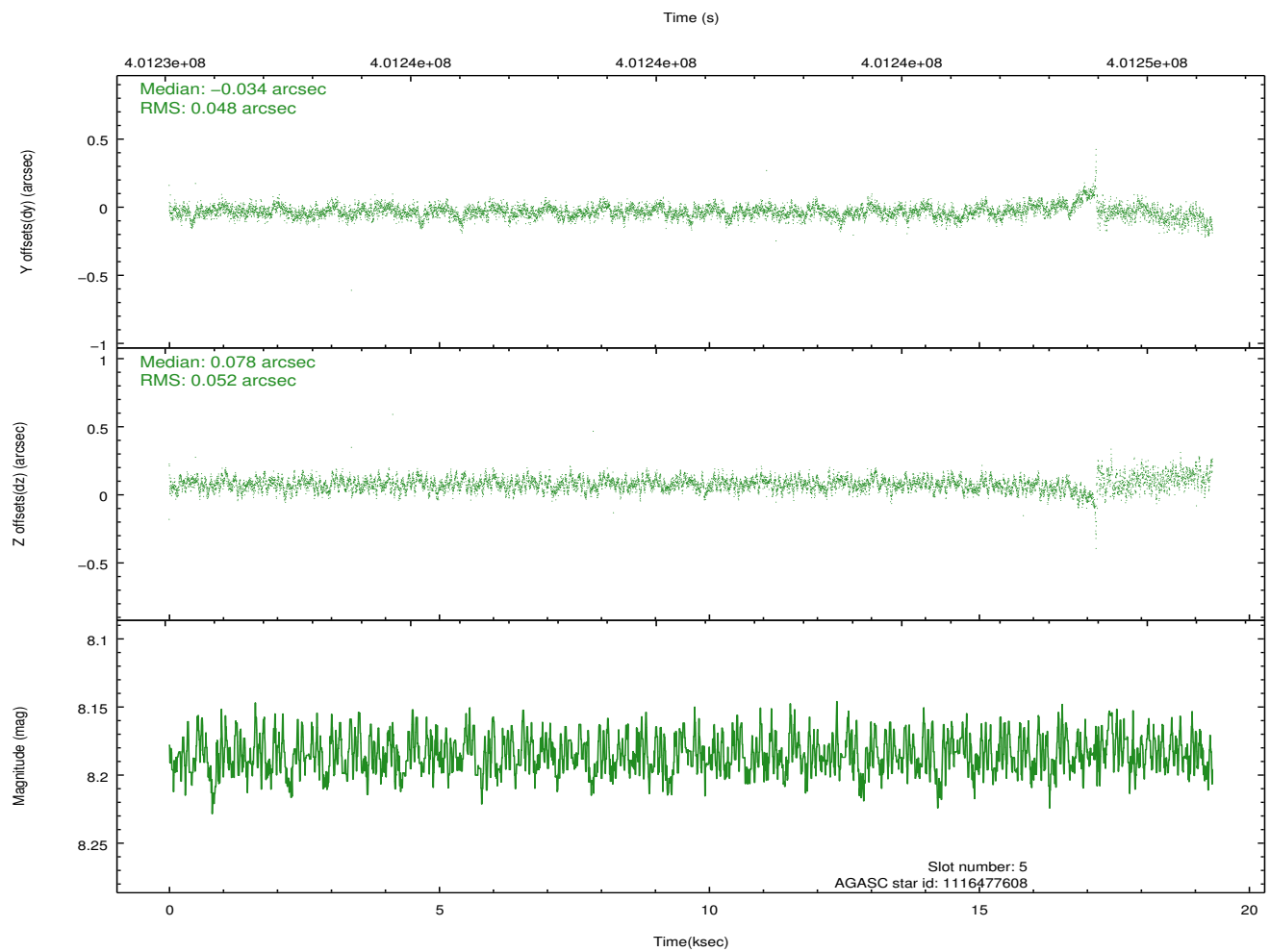
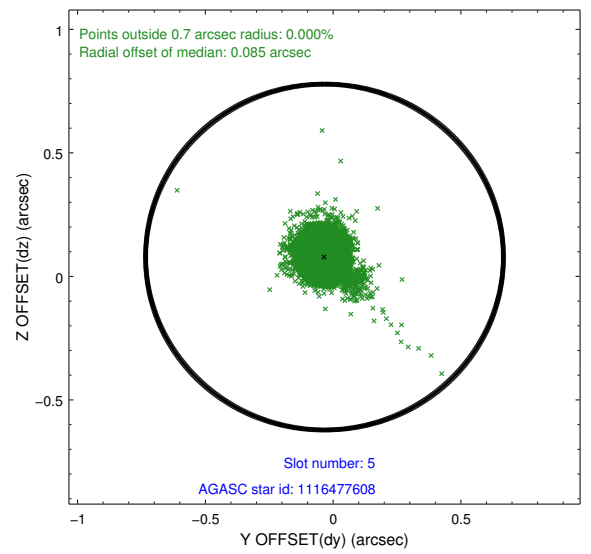
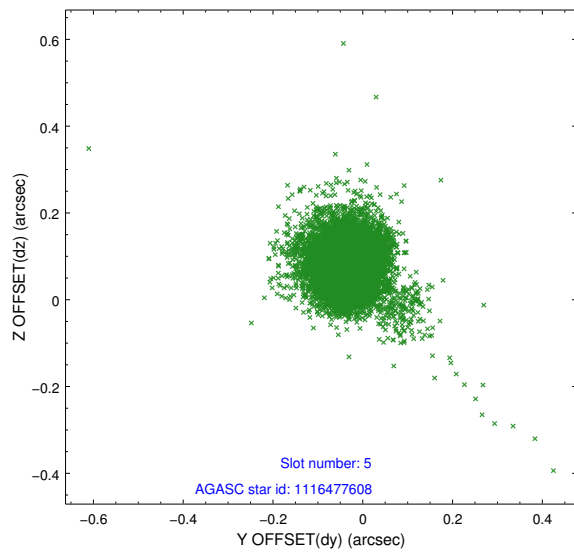
2.4.1 Slot 3



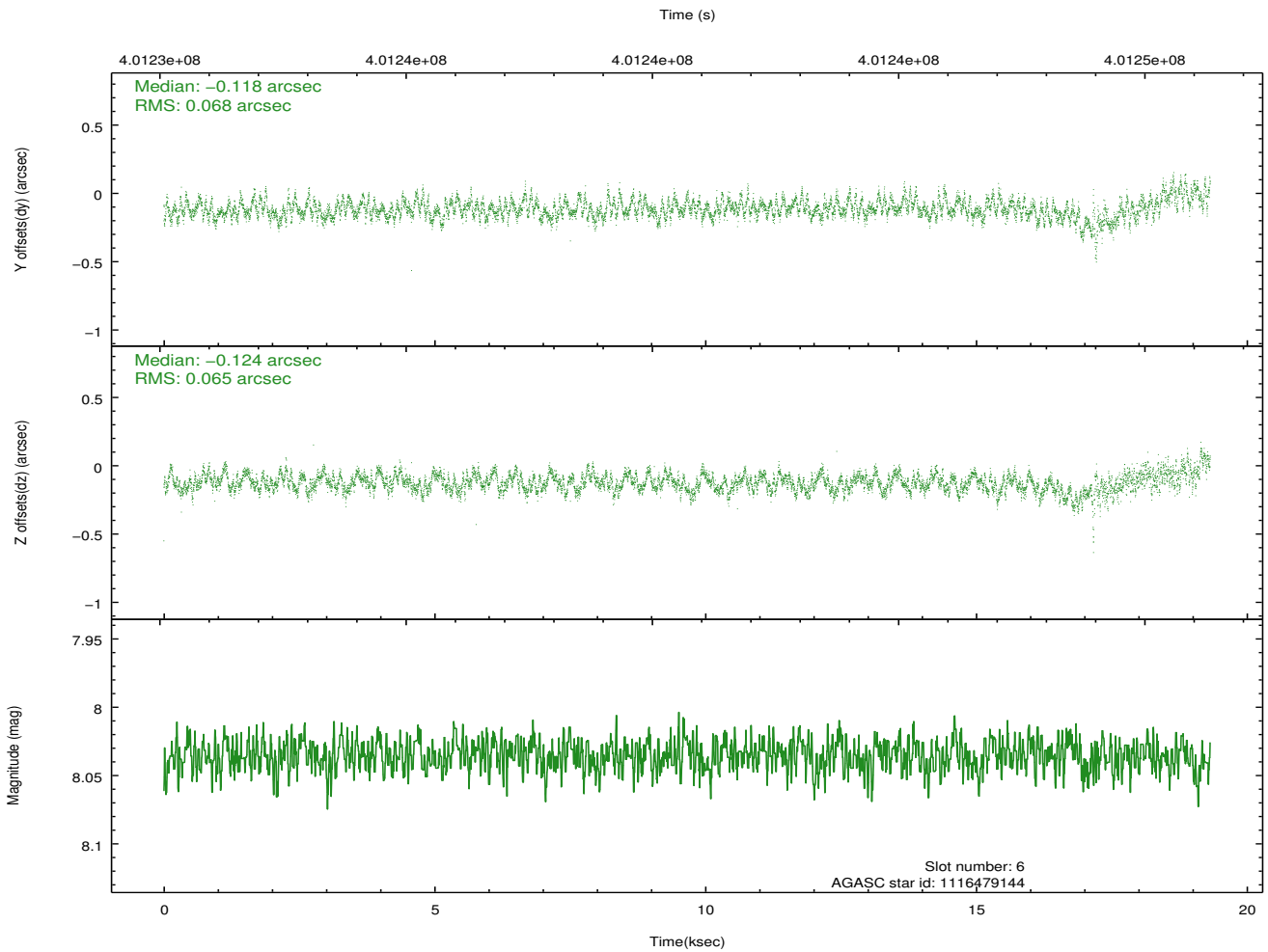
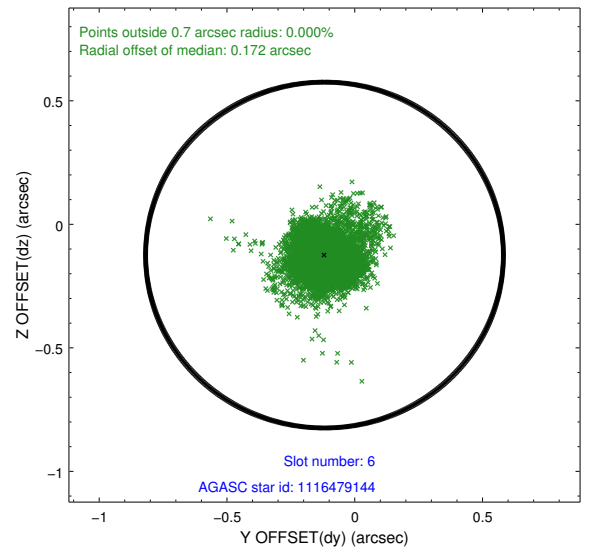
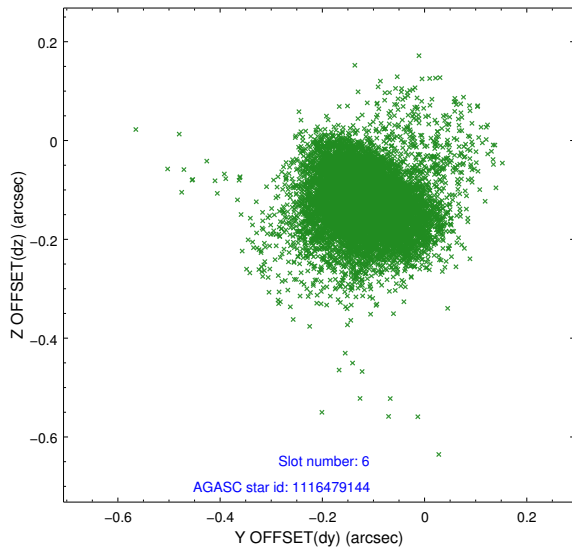
2.4.2 Slot 4



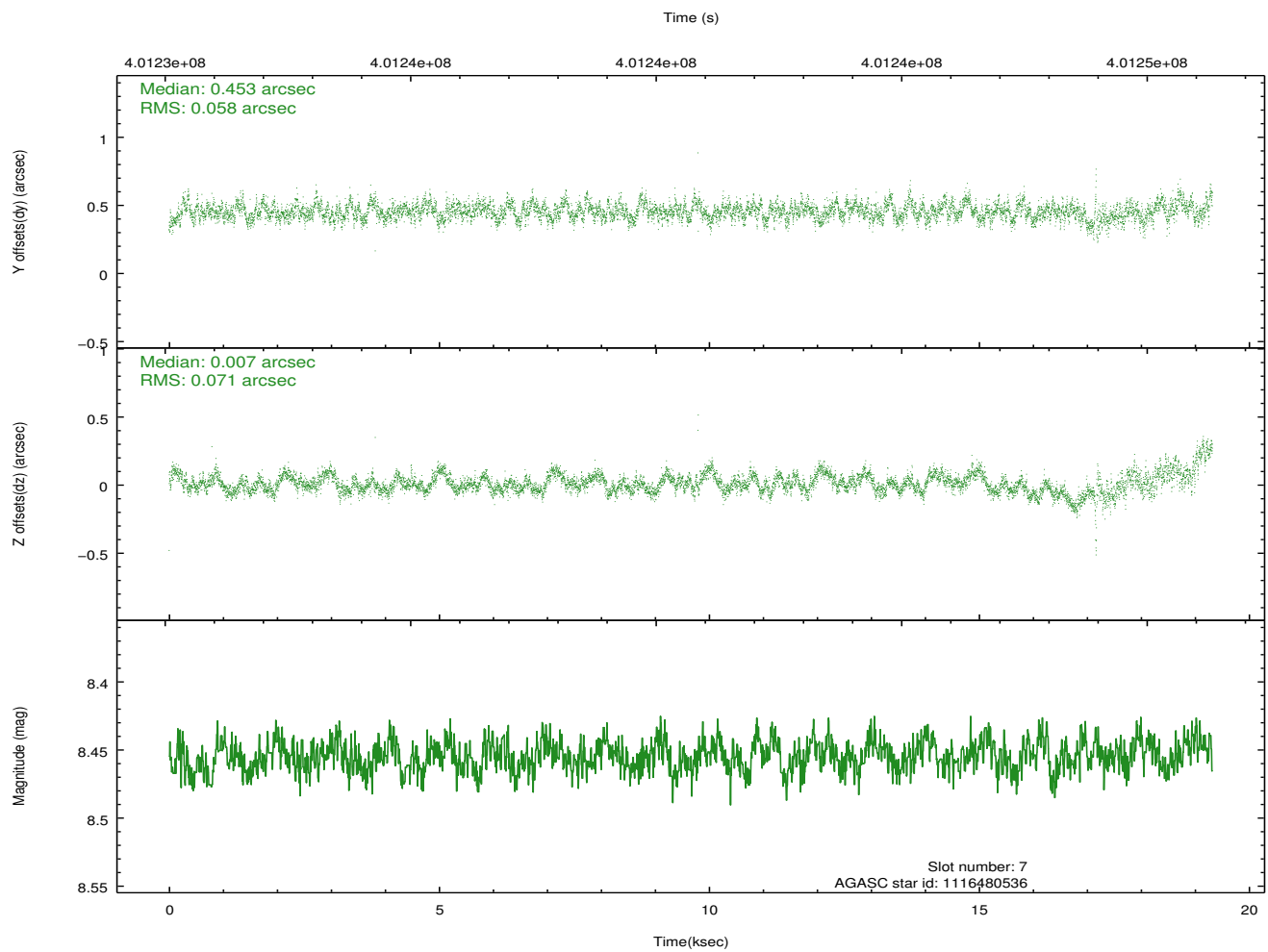
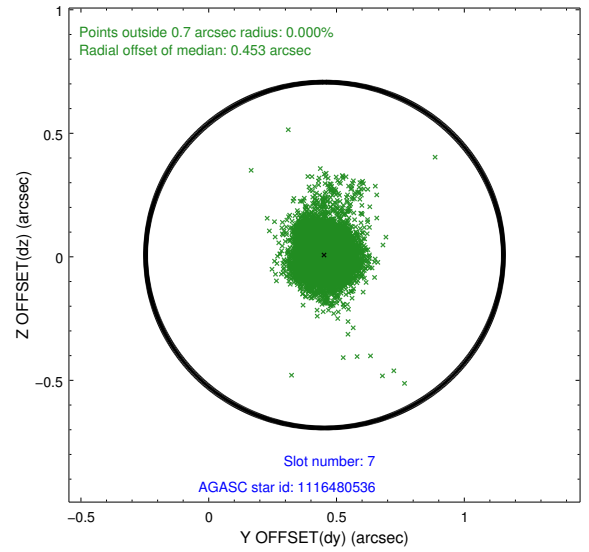
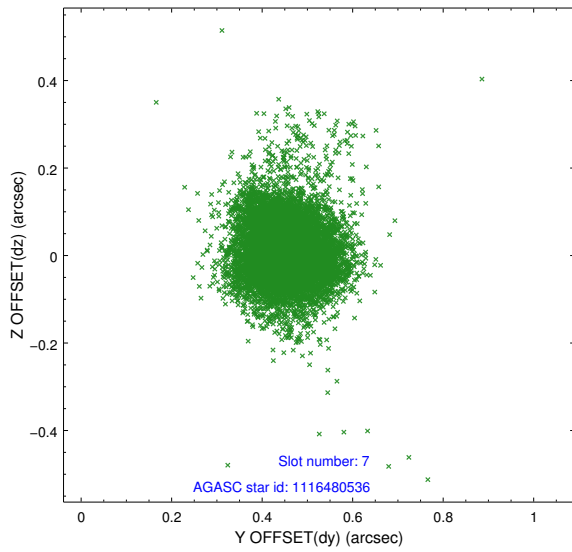
2.4.3 Slot 5



2.4.4 Slot 6

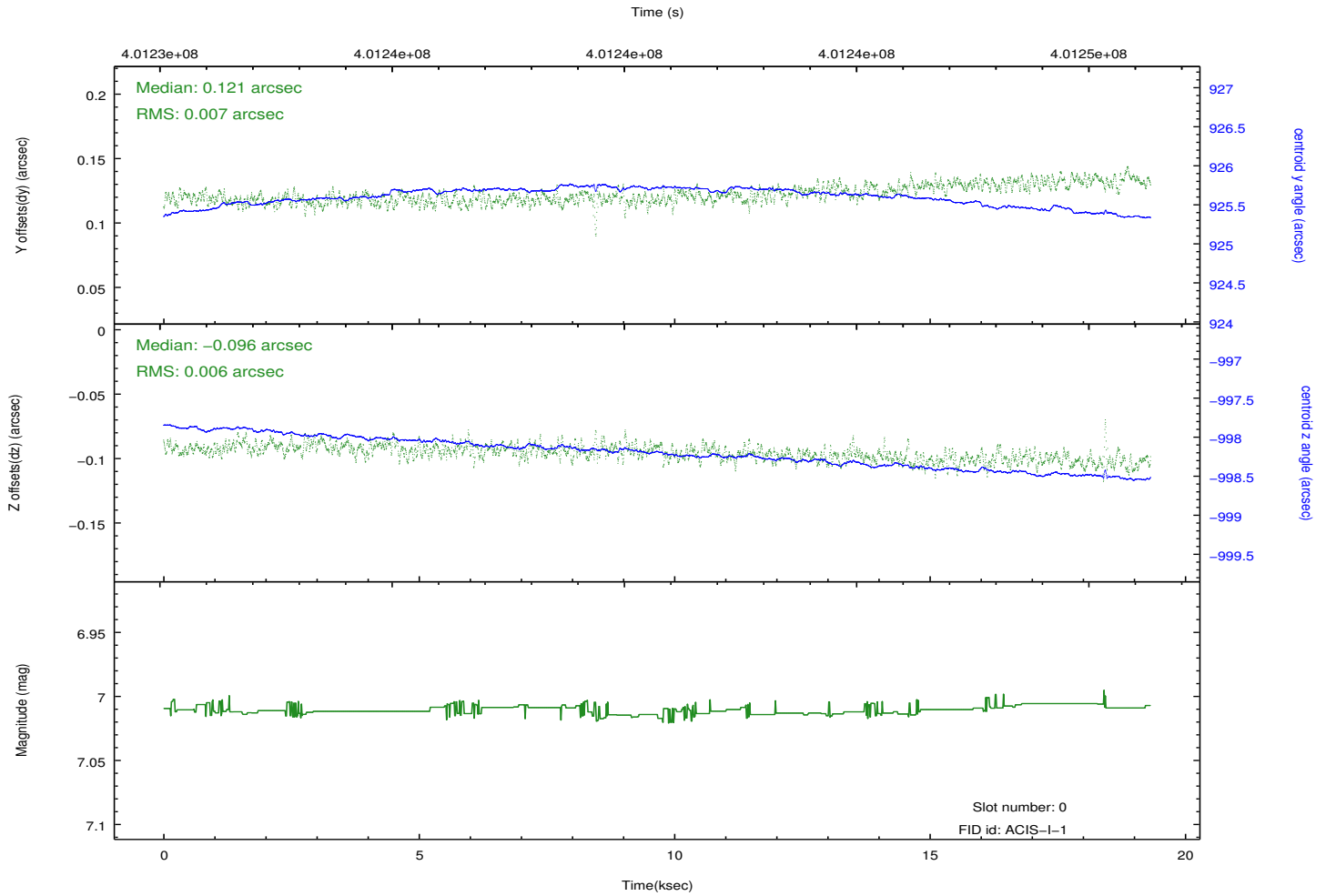
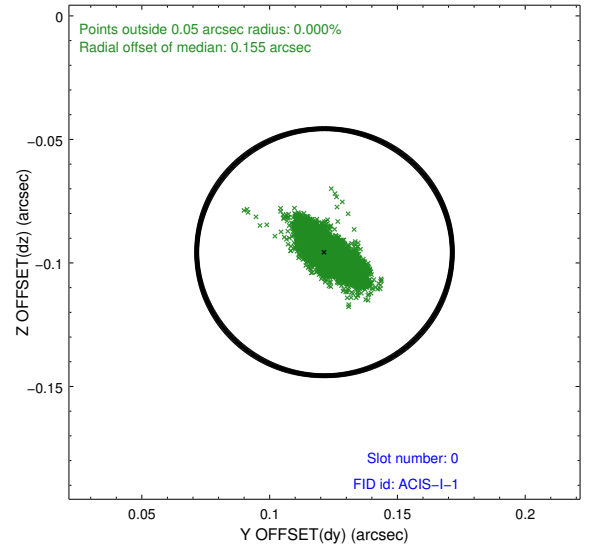
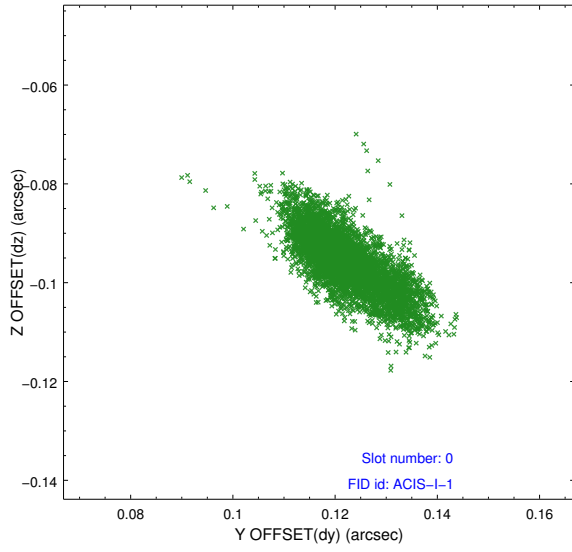


2.4.5 Slot 7

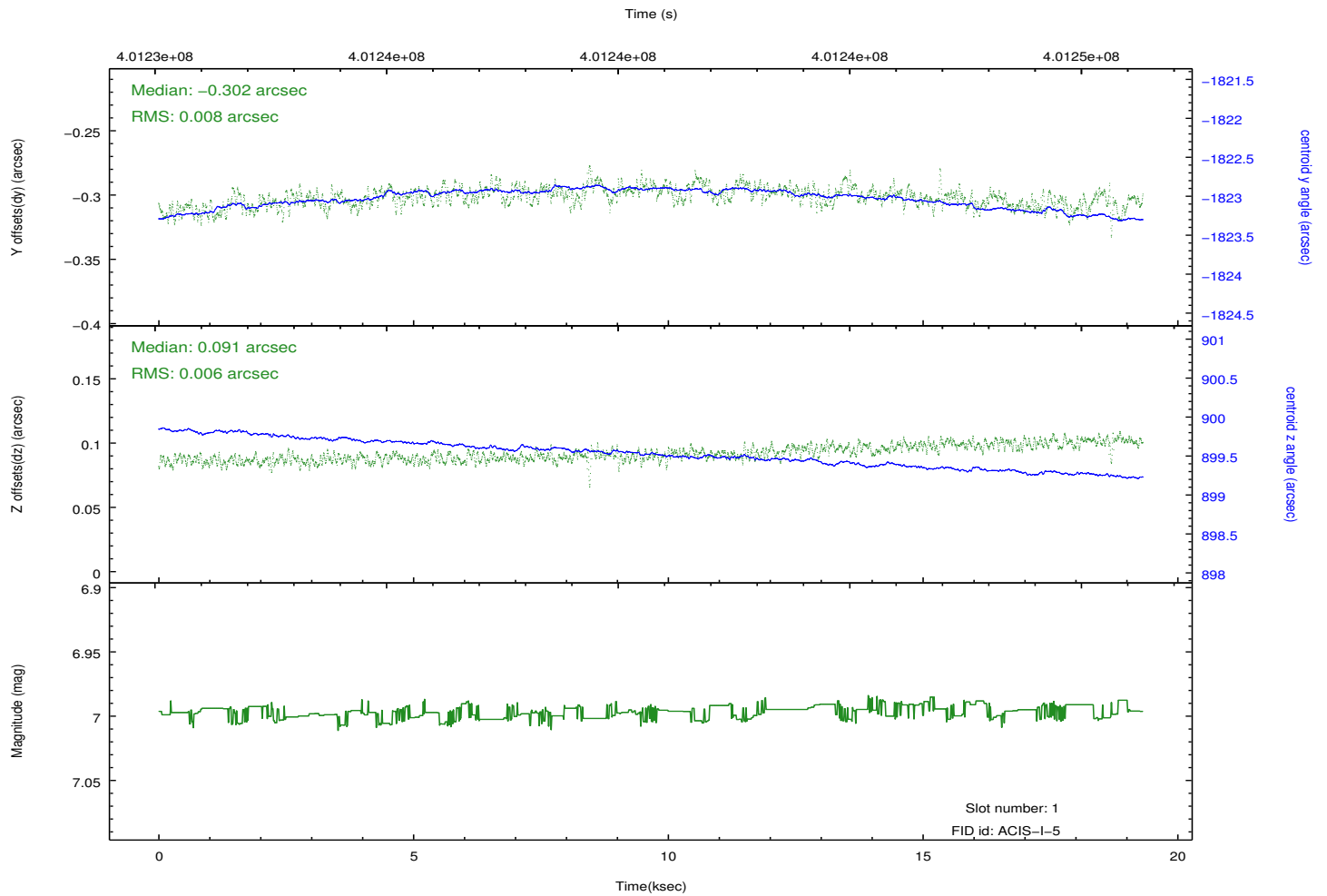
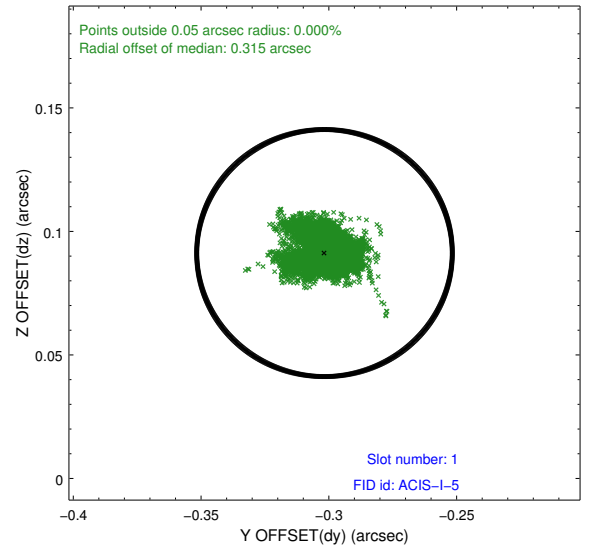
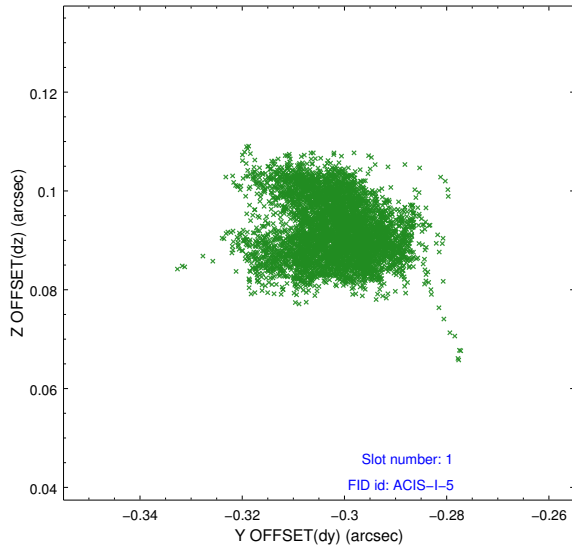


2.5 FID Slots

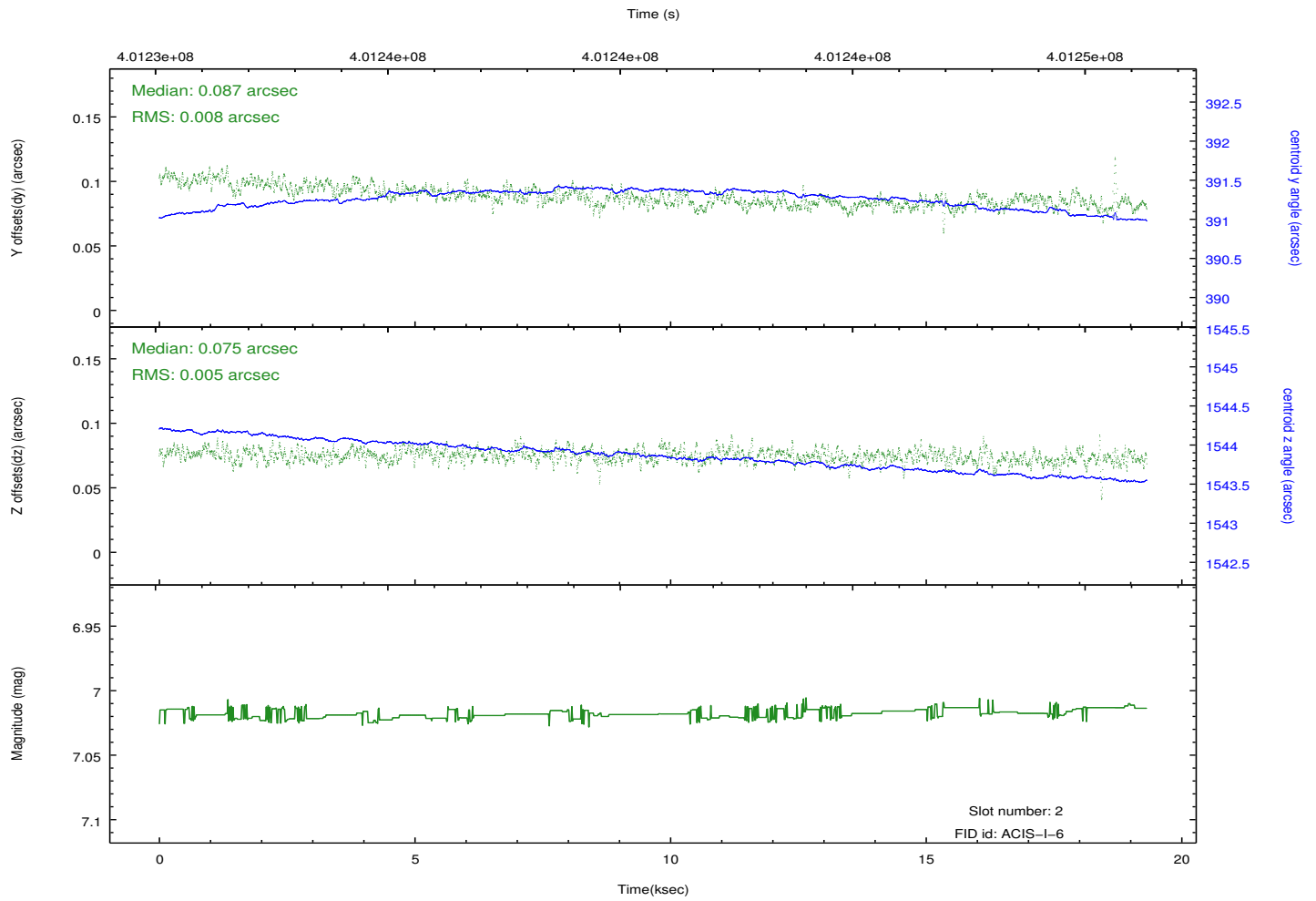
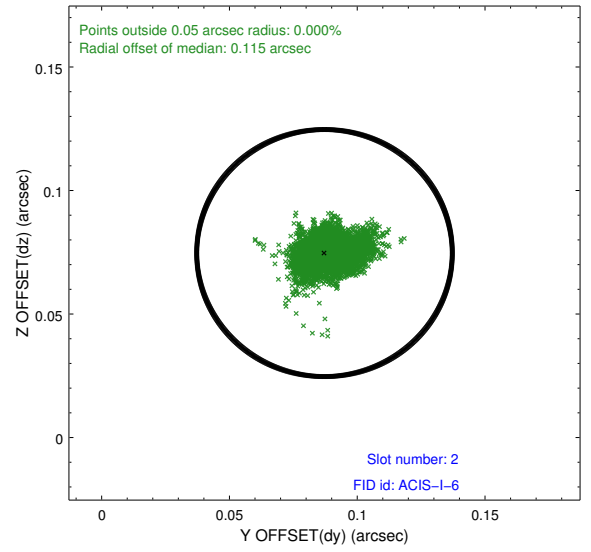
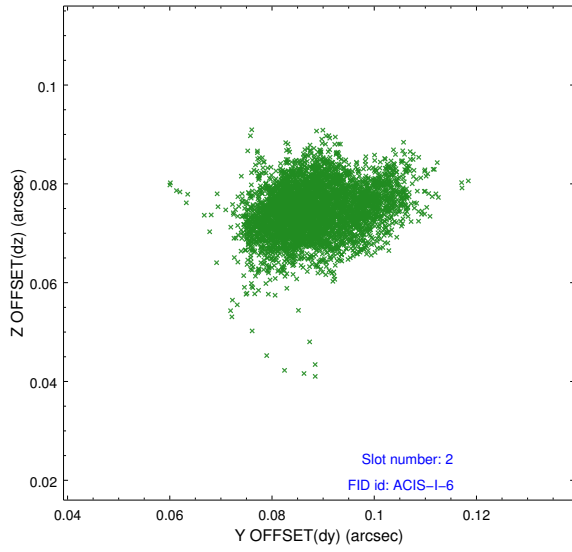
2.5.1 Slot 0



2.5.2 Slot 1



2.5.3 Slot 2



A Summary

A.1 Status

V&V Scientist	Jen Lauer
V&V Date (YYYY-MM-DD)	2012.07.11
V&V Edition	1
V&V Disposition and Status	OK
V&V Charge Time	18.552797970593

A.2 Comments