

# V&V Reference Report

## L2 ASCDS Version : 8.4.3

Observation 13396 - L2 Version 2  
Chandra X-Ray Center

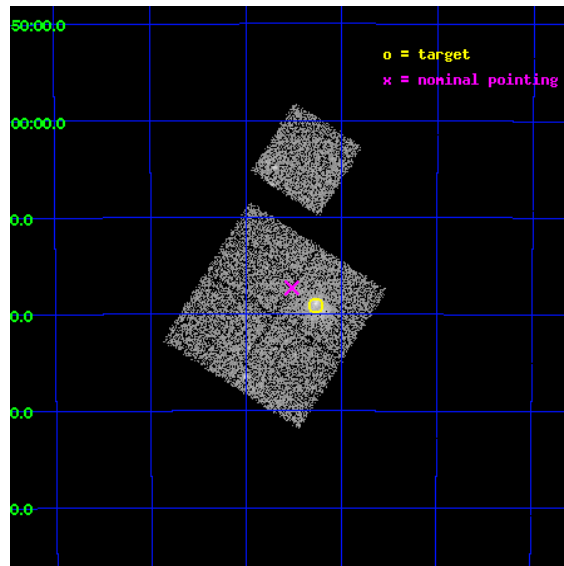
L2 Processing Date : Mar 2 2012

## Contents

<b>1</b>	<b>Front</b>	<b>2</b>
<b>2</b>	<b>OBI</b>	<b>3</b>
2.1	OBI . . . . .	3
2.1.1	Images . . . . .	3
2.1.2	Bias . . . . .	3
2.1.3	Parameters . . . . .	4
2.1.4	Events . . . . .	4
2.2	Compared Parameters . . . . .	5
2.3	Aspect . . . . .	6
2.4	Star Slots . . . . .	9
2.4.1	Slot 3 . . . . .	9
2.4.2	Slot 4 . . . . .	10
2.4.3	Slot 5 . . . . .	11
2.4.4	Slot 6 . . . . .	12
2.4.5	Slot 7 . . . . .	13
2.5	FID Slots . . . . .	14
2.5.1	Slot 0 . . . . .	14
2.5.2	Slot 1 . . . . .	15
2.5.3	Slot 2 . . . . .	16
<b>A</b>	<b>Summary</b>	<b>17</b>
A.1	Status . . . . .	17
A.2	Comments . . . . .	17

# 1 Front

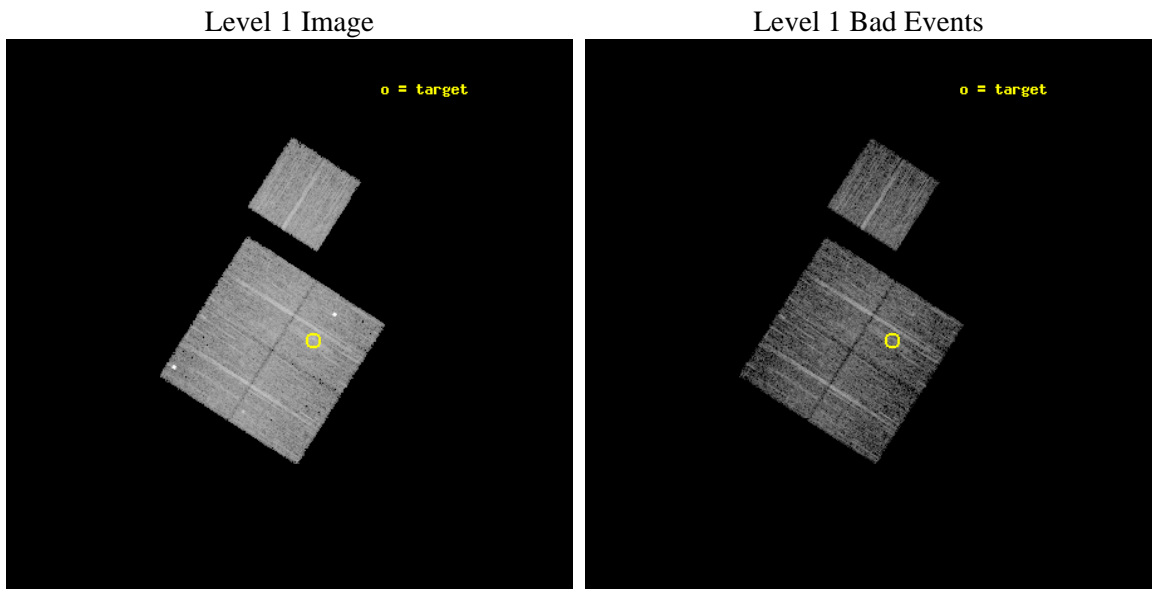
seq_num	801083	Sequence number
obs_id	13396	Observation id
title	Chandra Observations of a Sample of High Redshift SZE Galaxy Clusters	Proposal title
observer	Dr Stephen Murray	Principal investigator
object	SPT-CLJ0411-4819	Source name
dtycycle	0	&#160
cycle	P	events from which exps? Prim/Second/Both
ra_targ	62.81625	Observer's specified target RA [deg]
dec_targ	-48.318111	Observer's specified target Dec [deg]
ra_nom	62.88011488604	Nominal RA [deg]
dec_nom	-48.288320970977	Nominal Dec [deg]
roll_nom	32.529292479461	Nominal Roll [deg]
revision	2	Processing version of data
ontime	8058.9045470357	Sum of GTIs [s]
livetime	7953.6090262495	Livetime [s]
ontime0	8058.7814270258	Sum of GTIs [s]
ontime1	8058.8224670291	Sum of GTIs [s]
ontime2	8058.8635070324	Sum of GTIs [s]
ontime3	8058.9045470357	Sum of GTIs [s]
ontime6	8058.7403870225	Sum of GTIs [s]
l2events	25991	Number of level 2 events



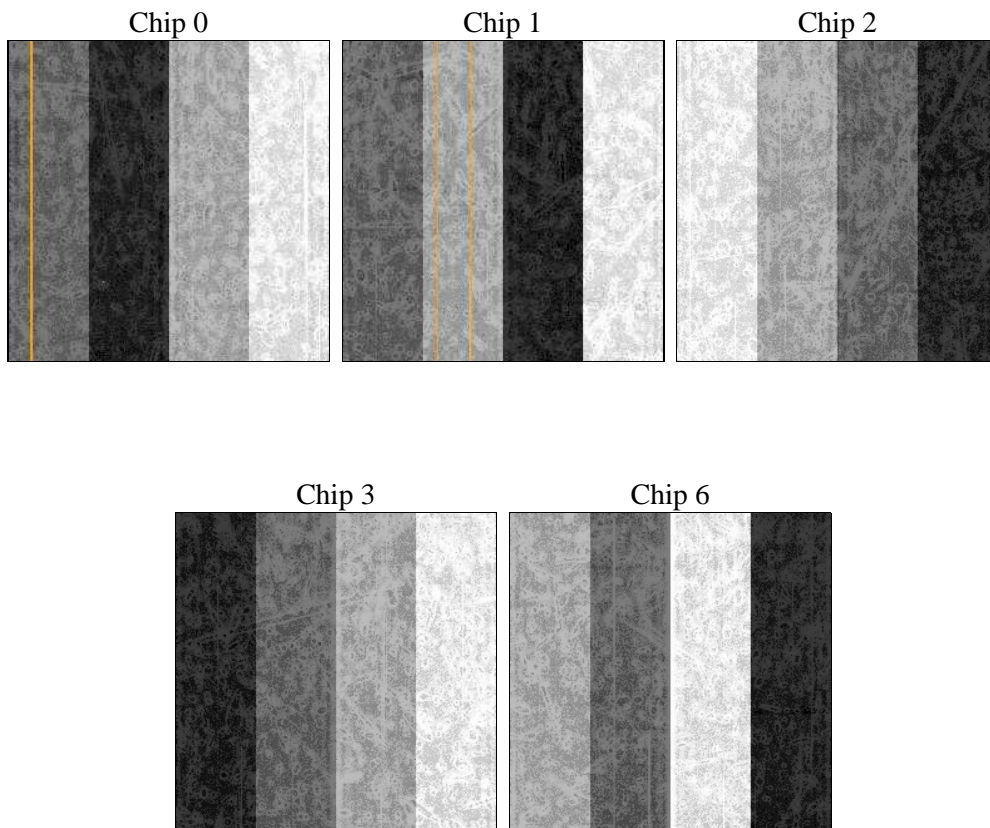
## 2 OBI

### 2.1 OBI

#### 2.1.1 Images



#### 2.1.2 Bias



### 2.1.3 Parameters

obi_num	0	Obi number	sched_exp_time	8000.000000	[s] Scheduled observation exposure time
ascdsver	8.4.3.1	Processing system revision	ontime	8058.9045470357	Sum of GTIs [s]
caldbver	4.4.8	&#160	ontime0	8058.7814270258	Sum of GTIs [s]
date	2012-03-02T14:43:17	Date and time of file creation	ontime1	8058.8224670291	Sum of GTIs [s]
revision	2	Processing version of data	ontime2	8058.8635070324	Sum of GTIs [s]
			ontime3	8058.9045470357	Sum of GTIs [s]
			ontime6	8058.7403870225	Sum of GTIs [s]
			l1events	246832	Number of level 1 events

### 2.1.4 Events

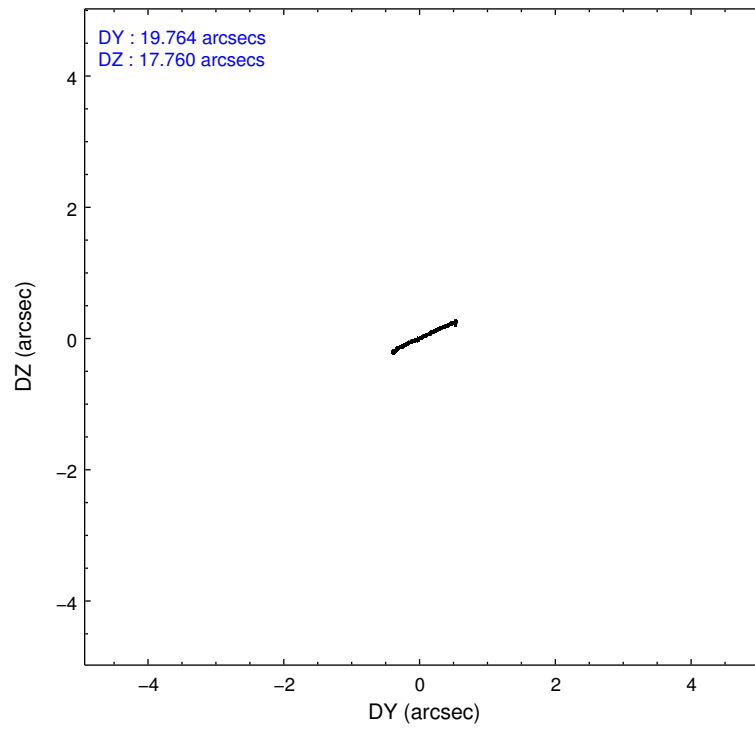
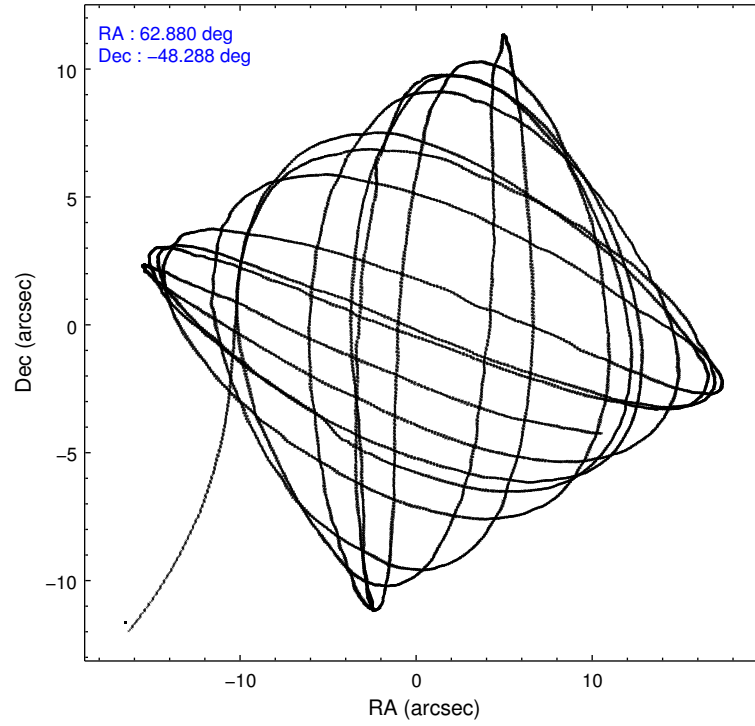
	ccd 0	ccd 1	ccd 2	ccd 3	ccd 6
level 1 events	46623	46225	51193	52360	50431
rejected events	38479	39871	45625	42957	44482
rejected %	82%	86%	89%	82%	88%

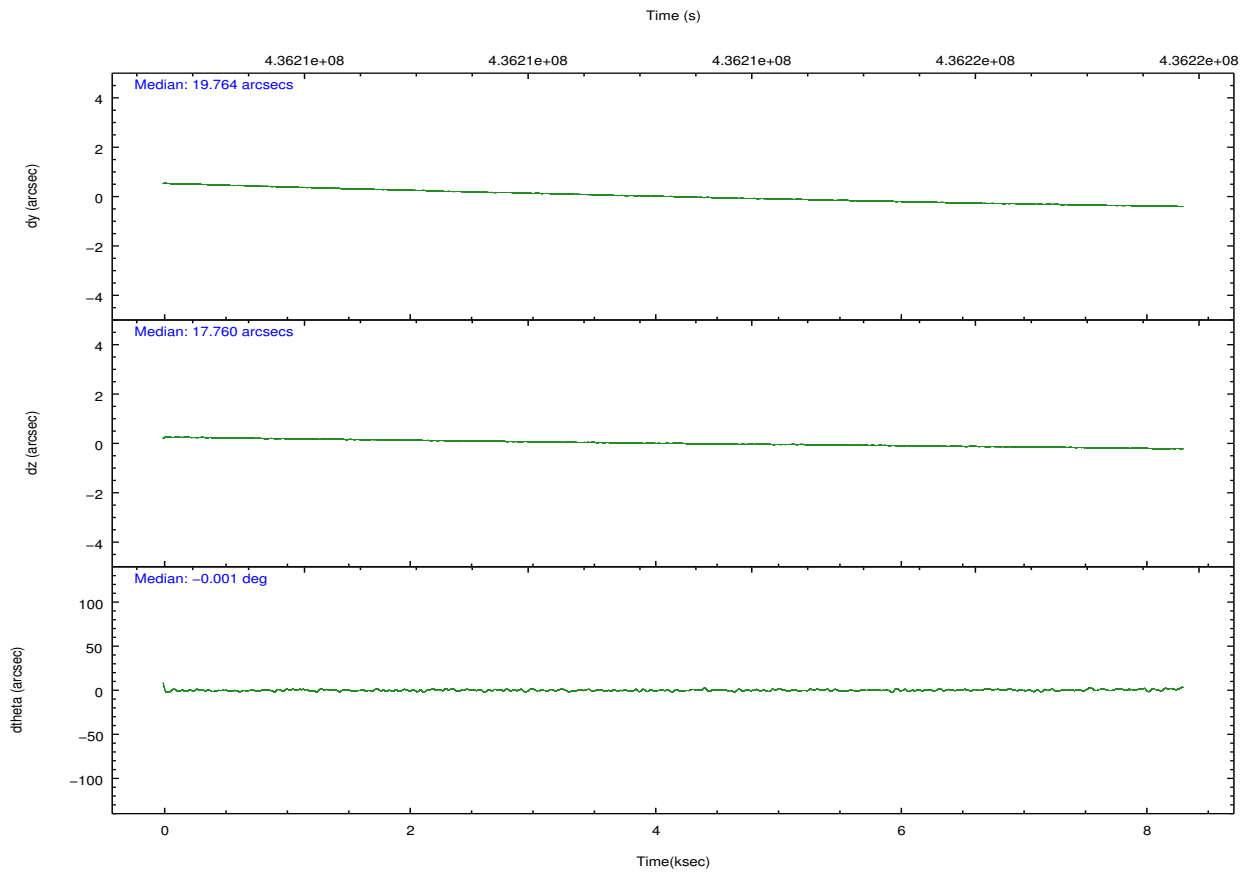
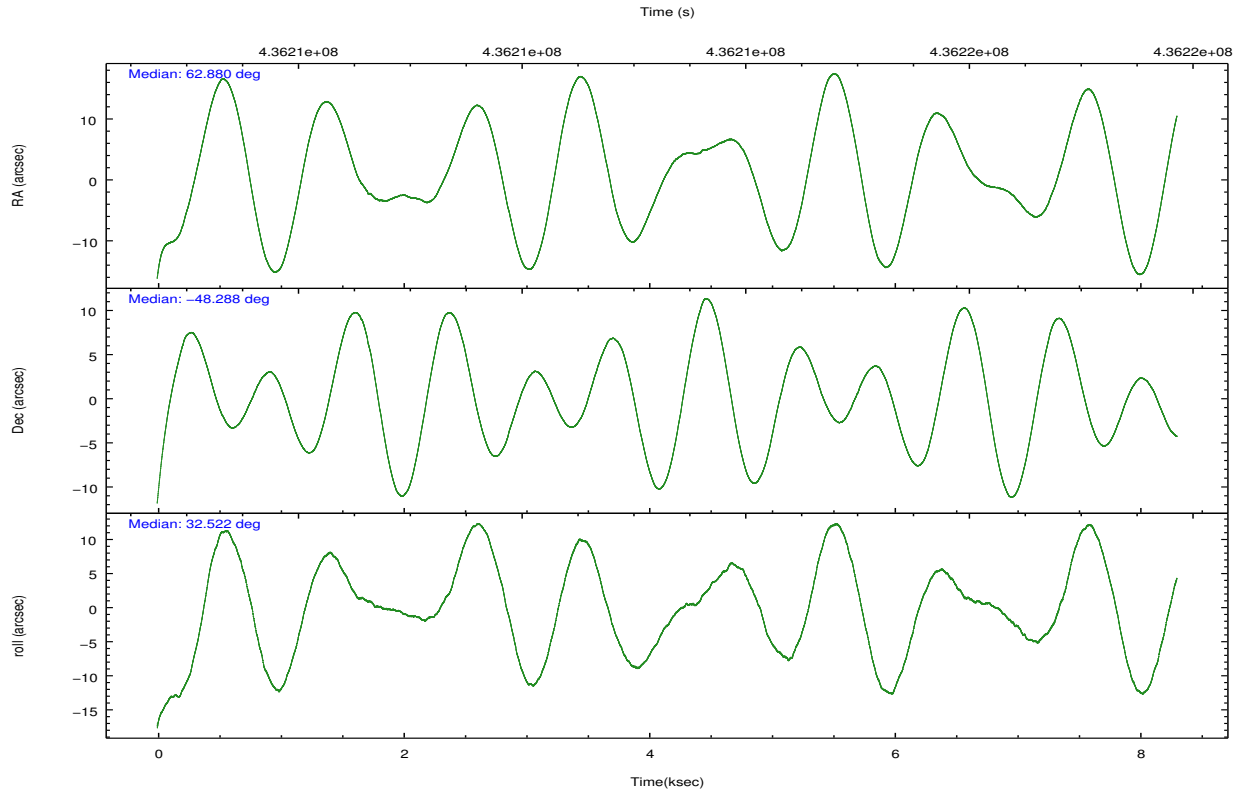
	ccd 0	ccd 1	ccd 2	ccd 3	ccd 6
grade 0 events	4411	2349	1906	5551	2093
	9%	5%	3%	10%	4%
grade 1 events	37	25	29	58	20
	0%	0%	0%	0%	0%
grade 2 events	1387	1492	1423	1382	1309
	2%	3%	2%	2%	2%
grade 3 events	596	629	578	654	627
	1%	1%	1%	1%	1%
grade 4 events	568	608	576	673	583
	1%	1%	1%	1%	1%
grade 5 events	2259	2253	2047	2406	2349
	4%	4%	3%	4%	4%
grade 6 events	1186	1278	1087	1146	1340
	2%	2%	2%	2%	2%
grade 7 events	36179	37591	43547	40490	42110
	77%	81%	85%	77%	83%

## 2.2 Compared Parameters

Parameter	Planned	Actual	Parameter	Planned	Actual
Instrument	ACIS	ACIS	Obspar format version number	7	7
Detector	ACIS-01236	ACIS-01236	Obspar file type	PREDICTED	ACTUAL
Grating	NONE	NONE	Obspar update status	NONE	UPDATED
Data mode	VFAINT	VFAINT	CCD I0 on	Y	Y
Observation mode	POINTING	POINTING	CCD I1 on	Y	Y
[deg] Pointing RA	62.861300	62.88011488603955	CCD I2 on	Y	Y
[deg] Pointing Dec	-48.312787	-48.2883209709773	CCD I3 on	Y	Y
[deg] Pointing Roll	32.306548	32.52929247946087	CCD S0 on	N	N
[mm] SIM focus pos	-0.782348	-0.7809083437167272	CCD S1 on	N	N
[mm] SIM defocus	0	0.001439871863259334	CCD S2 on	O1	Y
[mm] SIM translation stage pos	-225.840463	-225.8433433320239	CCD S3 on	N	N
[mm] SIM translation stage offset	-7.752	-7.749109670905796	CCD S4 on	N	N
[s] Observation start time (MET)	436209447.184000	436208455.94046	CCD S5 on	N	N
Observation start date	2011-10-28T17:16:21	2011-10-28T17:00:55	Number of optional ACIS chips dropped	0	0
[s] Observation end time (MET)	436217447.184000	436218431.24099	On-chip summing requested	N	N
Observation end date	2011-10-28T19:29:41	2011-10-28T19:47:11	Subarray requested	NONE	NONE
Read mode	TIMED	TIMED	Alternating exposures requested	N	N
			[s] Primary exposure time	0.000000	3.1

## 2.3 Aspect



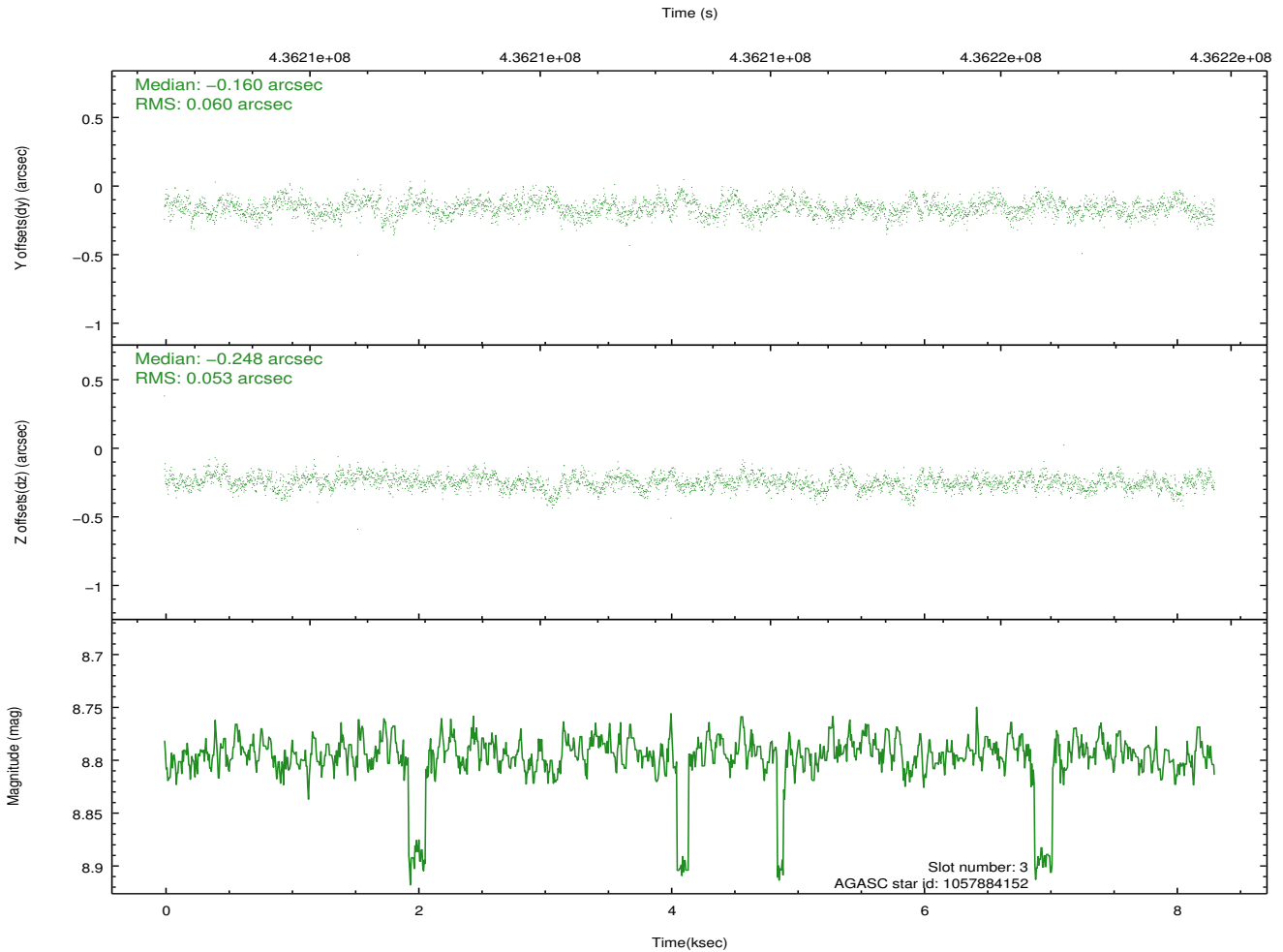
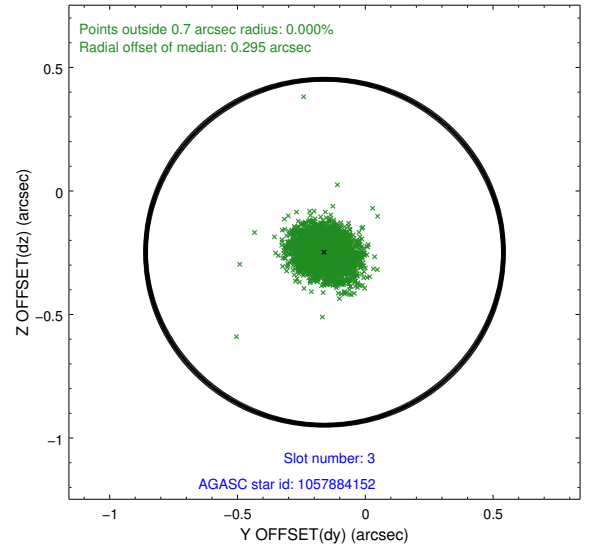
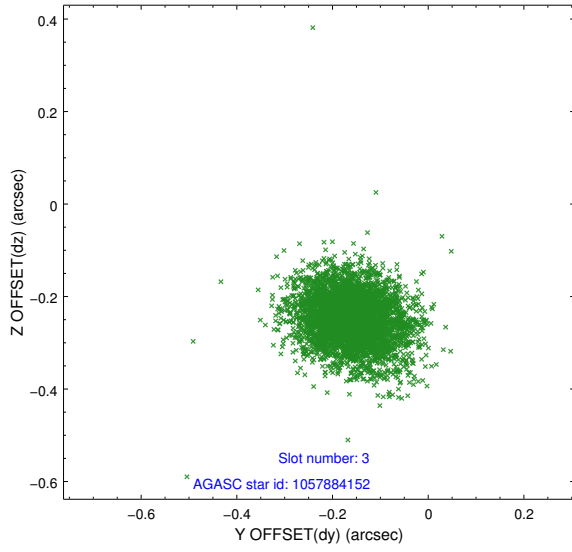


### Slot Statistics

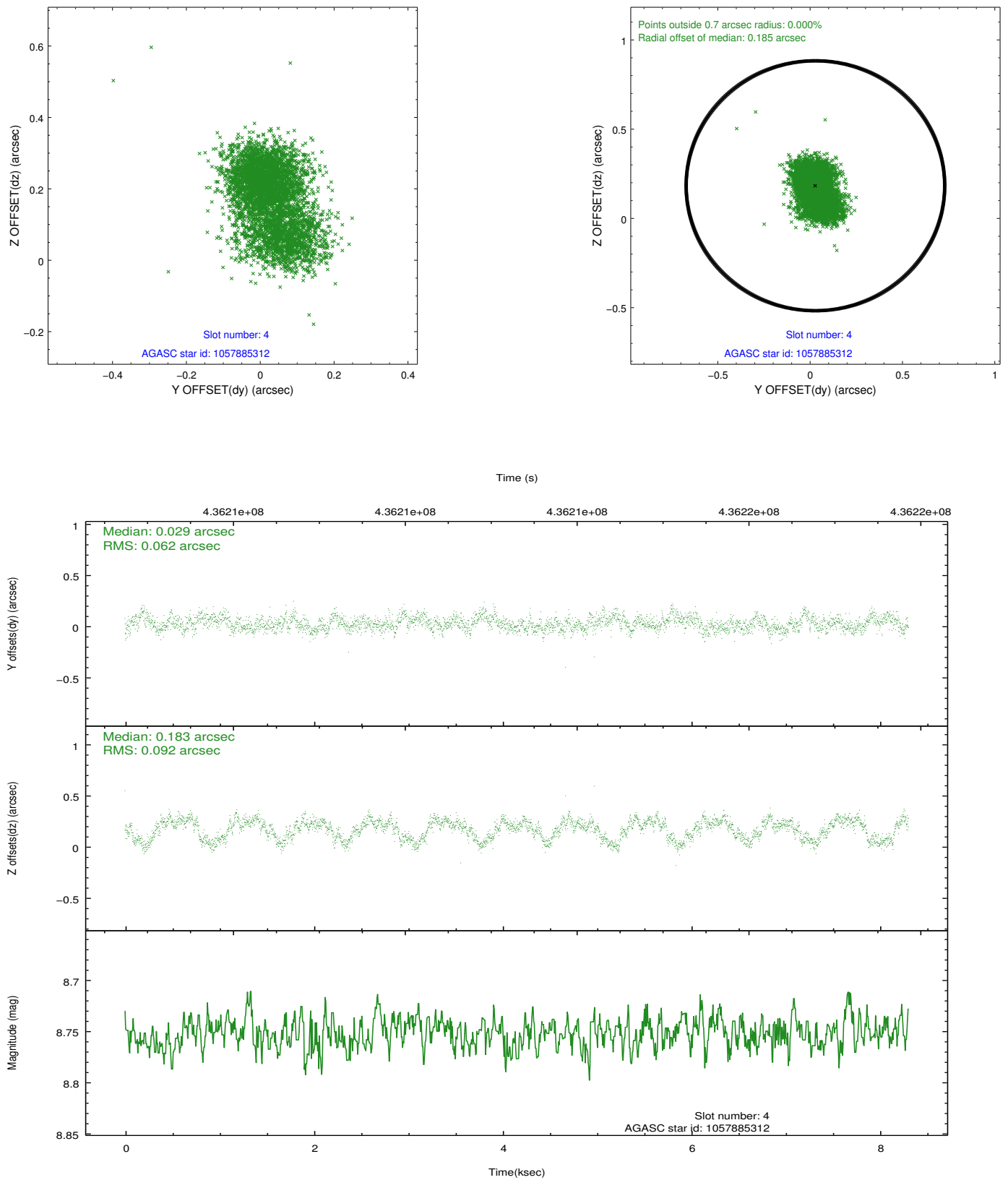
slot	status	id	mag	n_pts	med_dy	med_dz	dr1	dr2	ra	dec	mean_y	mean_z
0	FID	ACIS-I-1	7.09	2026	0.147	-0.101	0.011	0.017	0.000000	0.000000	919.54	-1000.62
1	FID	ACIS-I-2	7.04	2026	-0.345	-0.017	0.010	0.015	0.000000	0.000000	-775.08	-1006.35
2	FID	ACIS-I-4	6.98	2026	0.101	0.185	0.006	0.010	0.000000	0.000000	2138.65	900.01
3	GUIDE	1057884152	8.80	4040	-0.160	-0.248	0.085	0.138	63.182267	-47.565713	2096.15	1855.08
4	GUIDE	1057885312	8.75	4051	0.029	0.183	0.119	0.190	63.453714	-48.106999	1597.66	-138.81
5	GUIDE	1057891656	8.66	4051	0.051	0.295	0.100	0.158	63.028923	-48.976842	-942.08	-2232.55
6	GUIDE	1057892856	7.75	4052	-0.118	-0.014	0.069	0.108	62.048221	-48.345716	-1713.18	929.85
7	GUIDE	1058021376	8.43	4051	0.192	-0.209	0.134	0.244	64.219752	-48.515728	2332.89	-2372.72

## 2.4 Star Slots

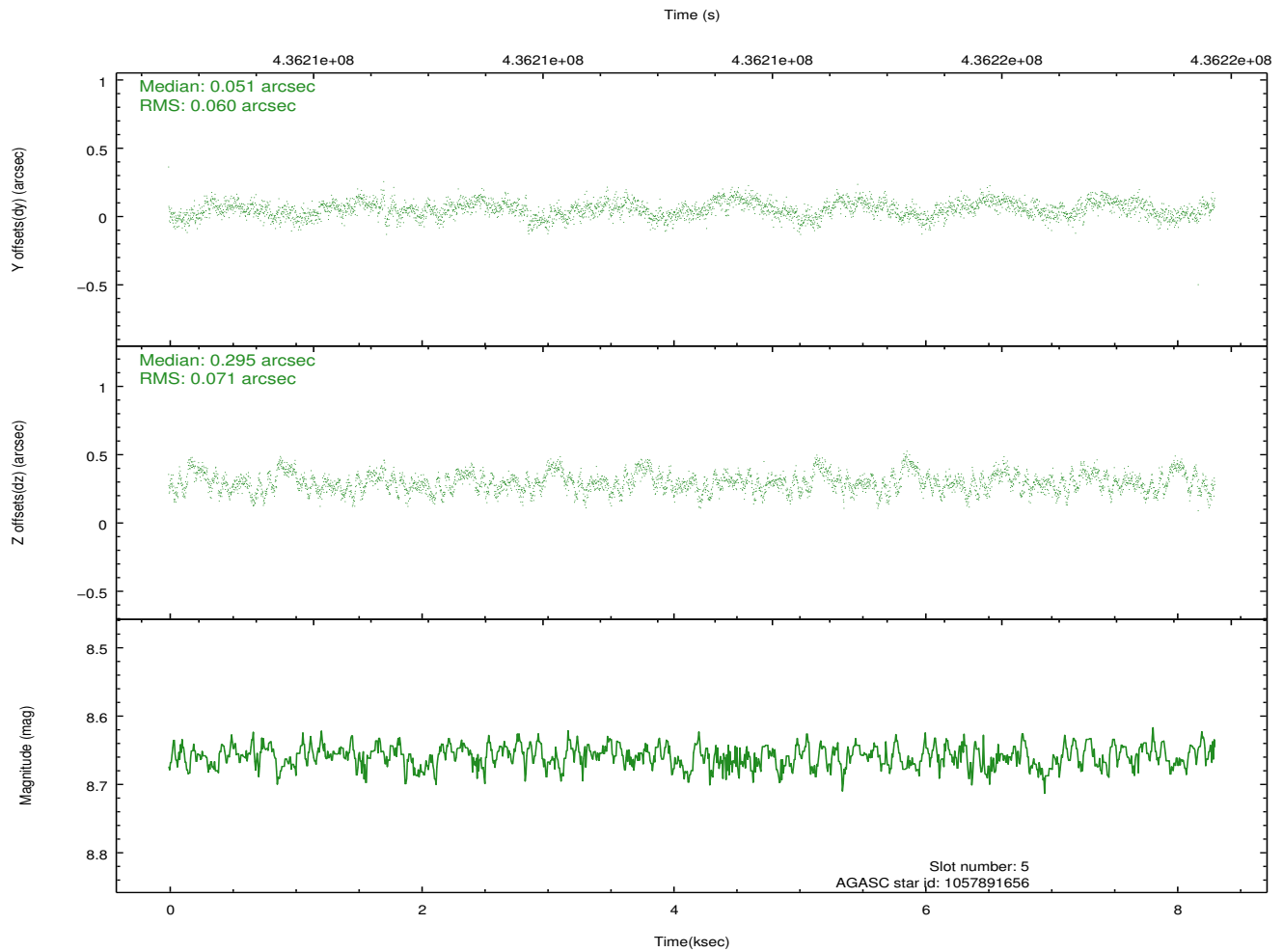
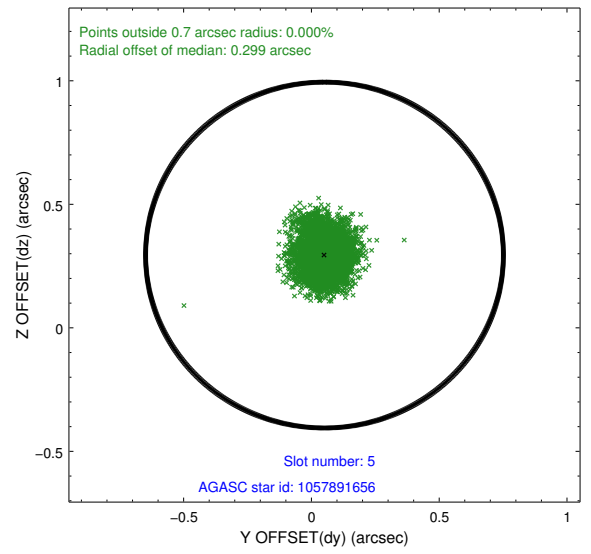
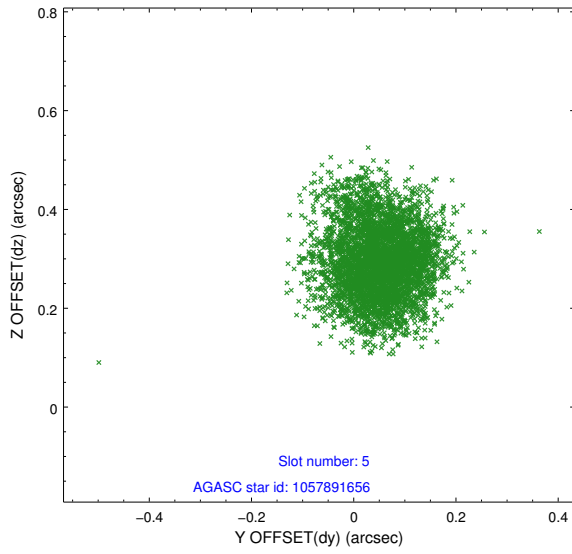
### 2.4.1 Slot 3



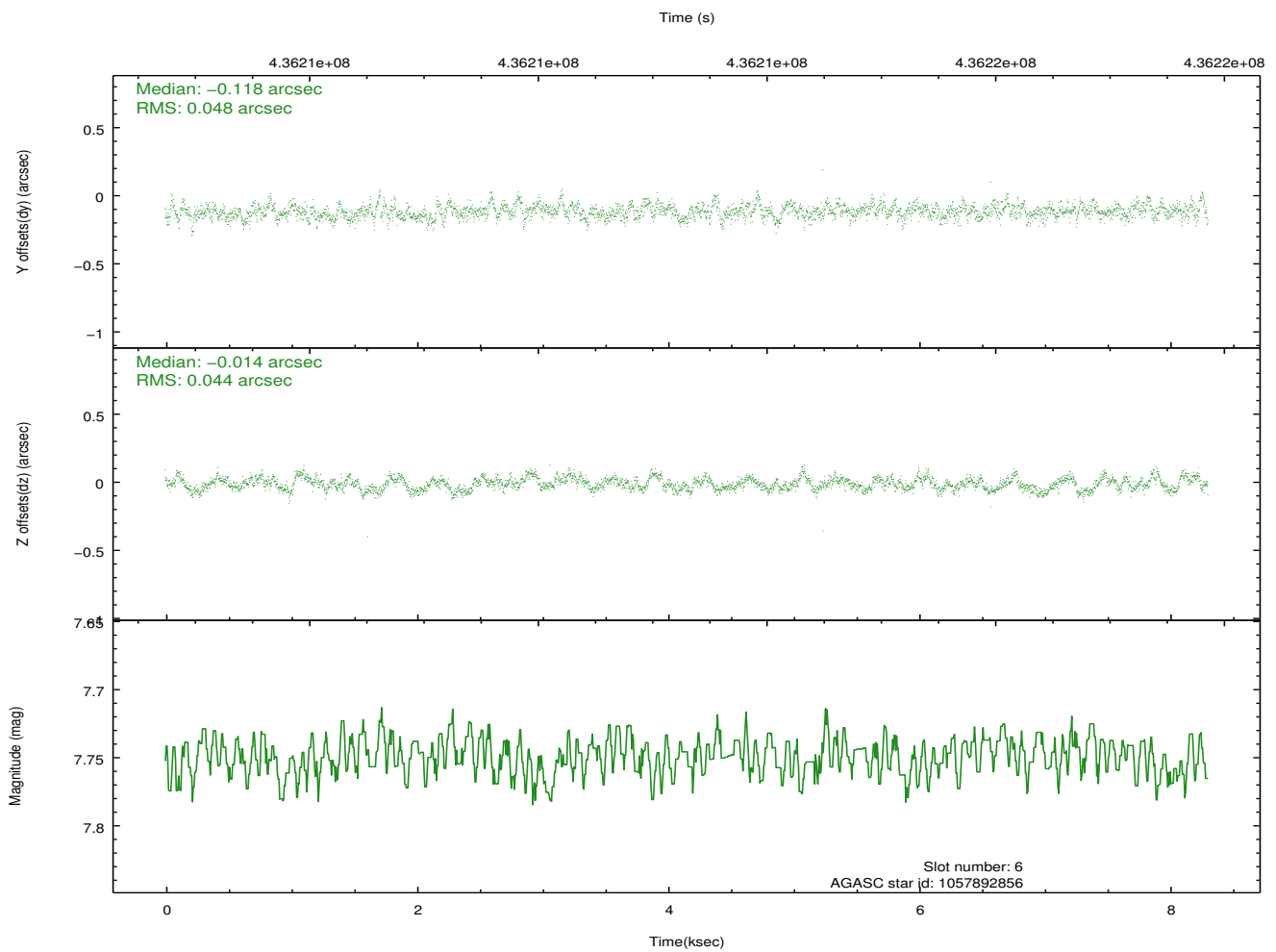
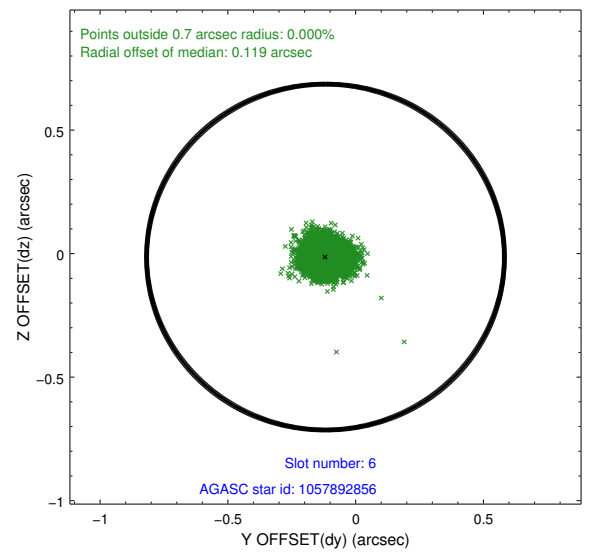
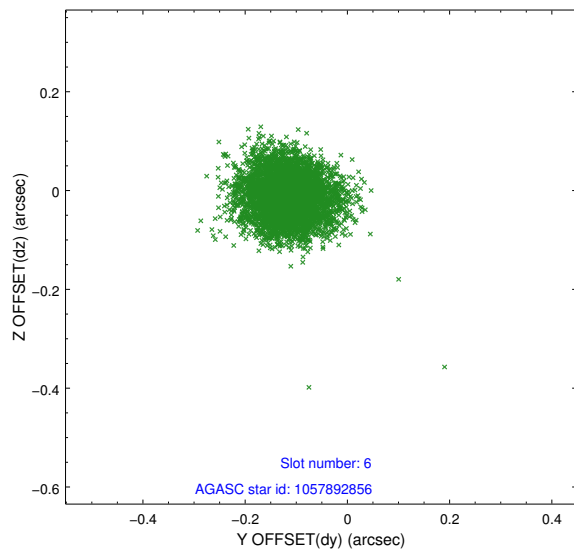
## 2.4.2 Slot 4



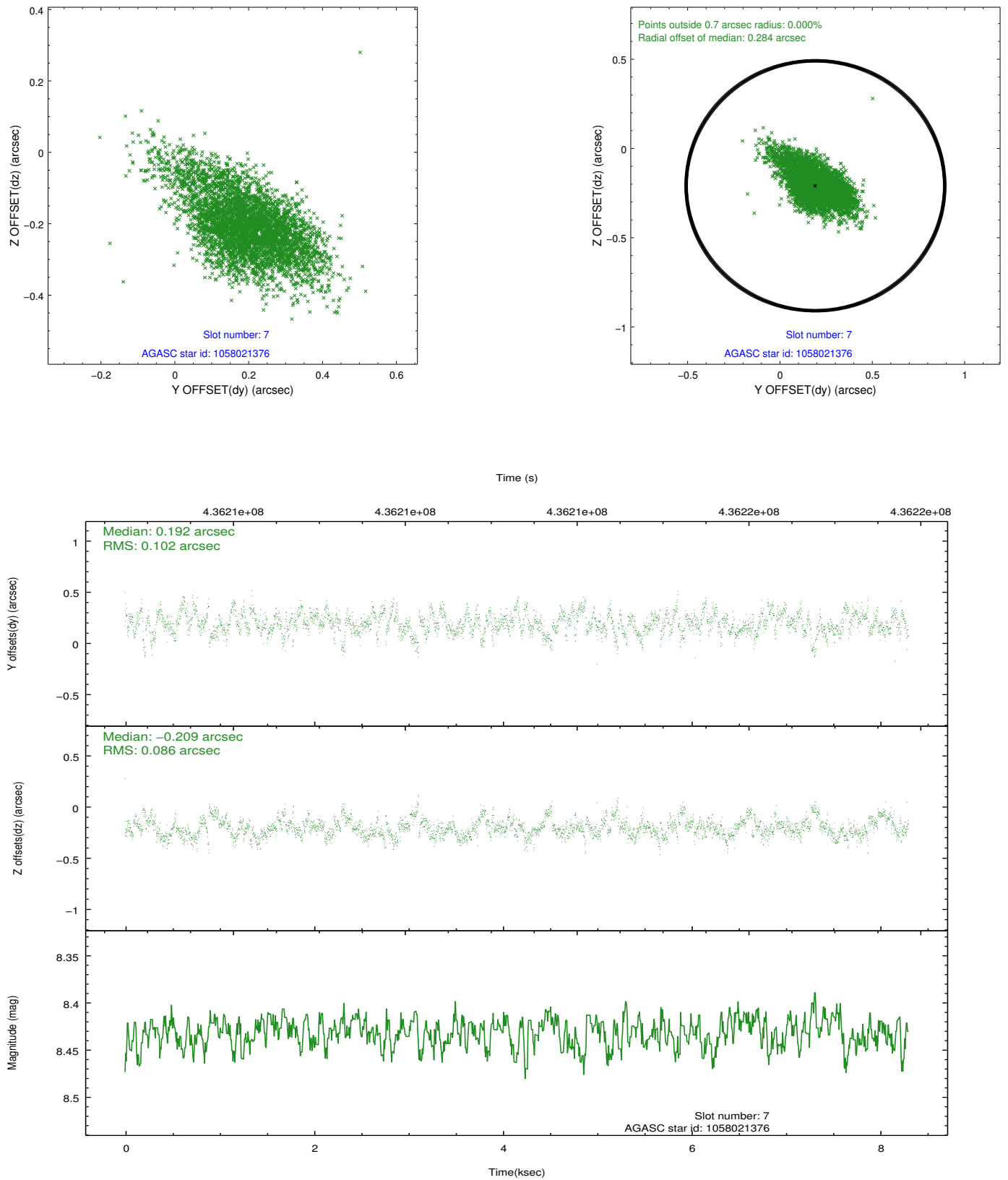
### 2.4.3 Slot 5



## 2.4.4 Slot 6

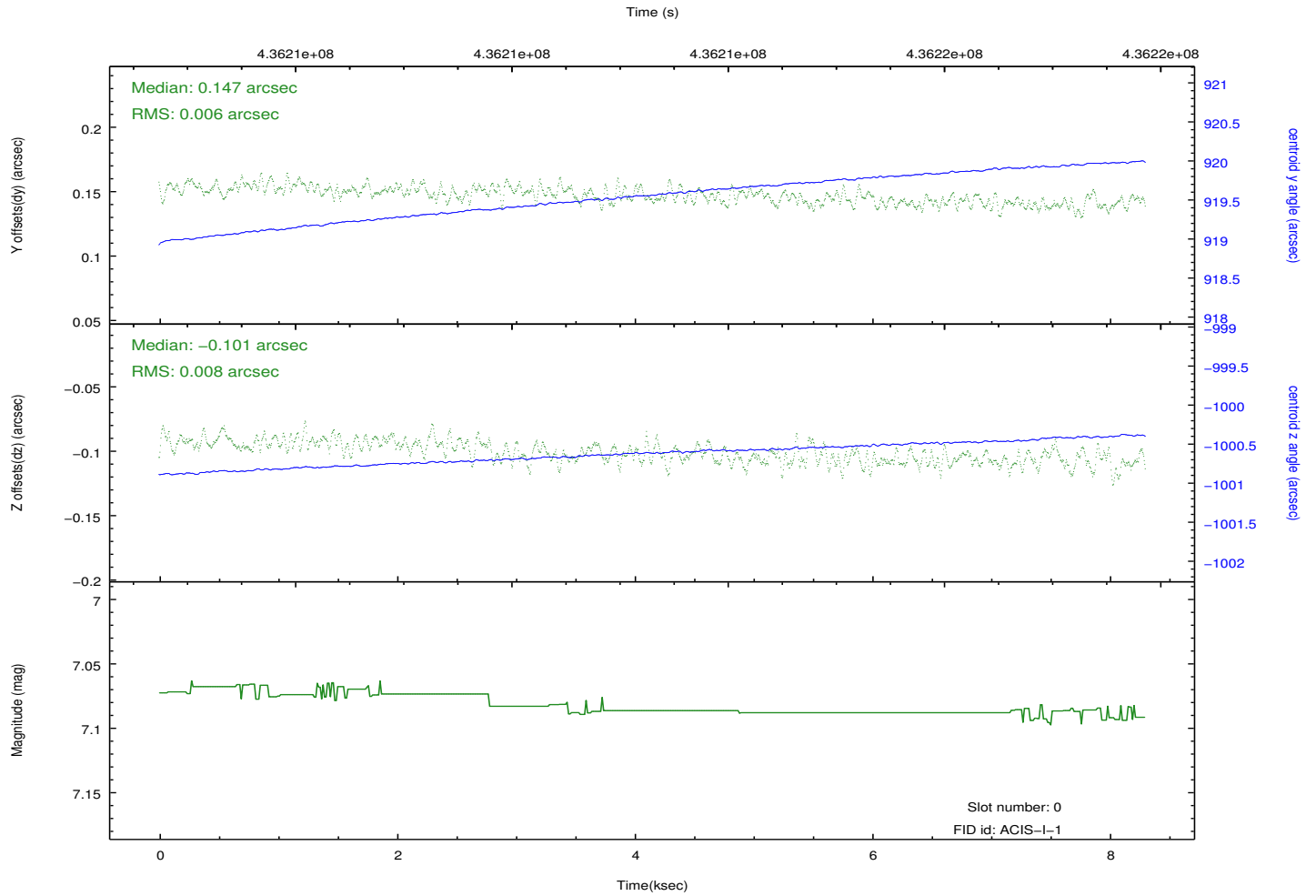
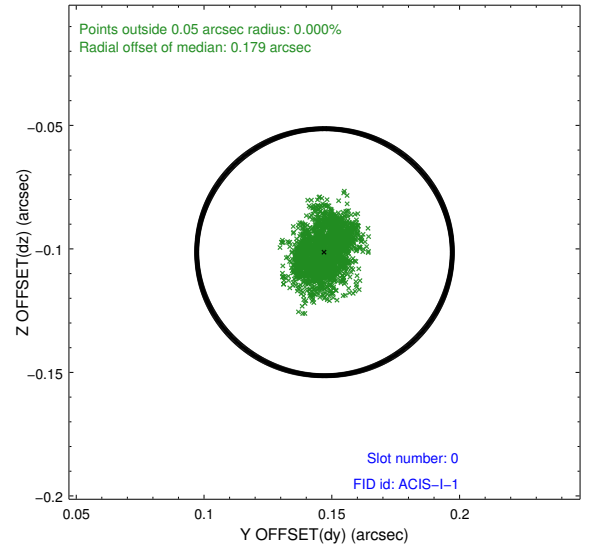
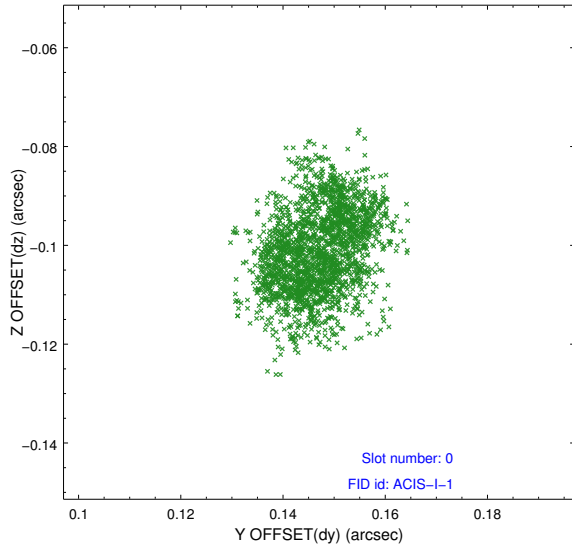


## 2.4.5 Slot 7

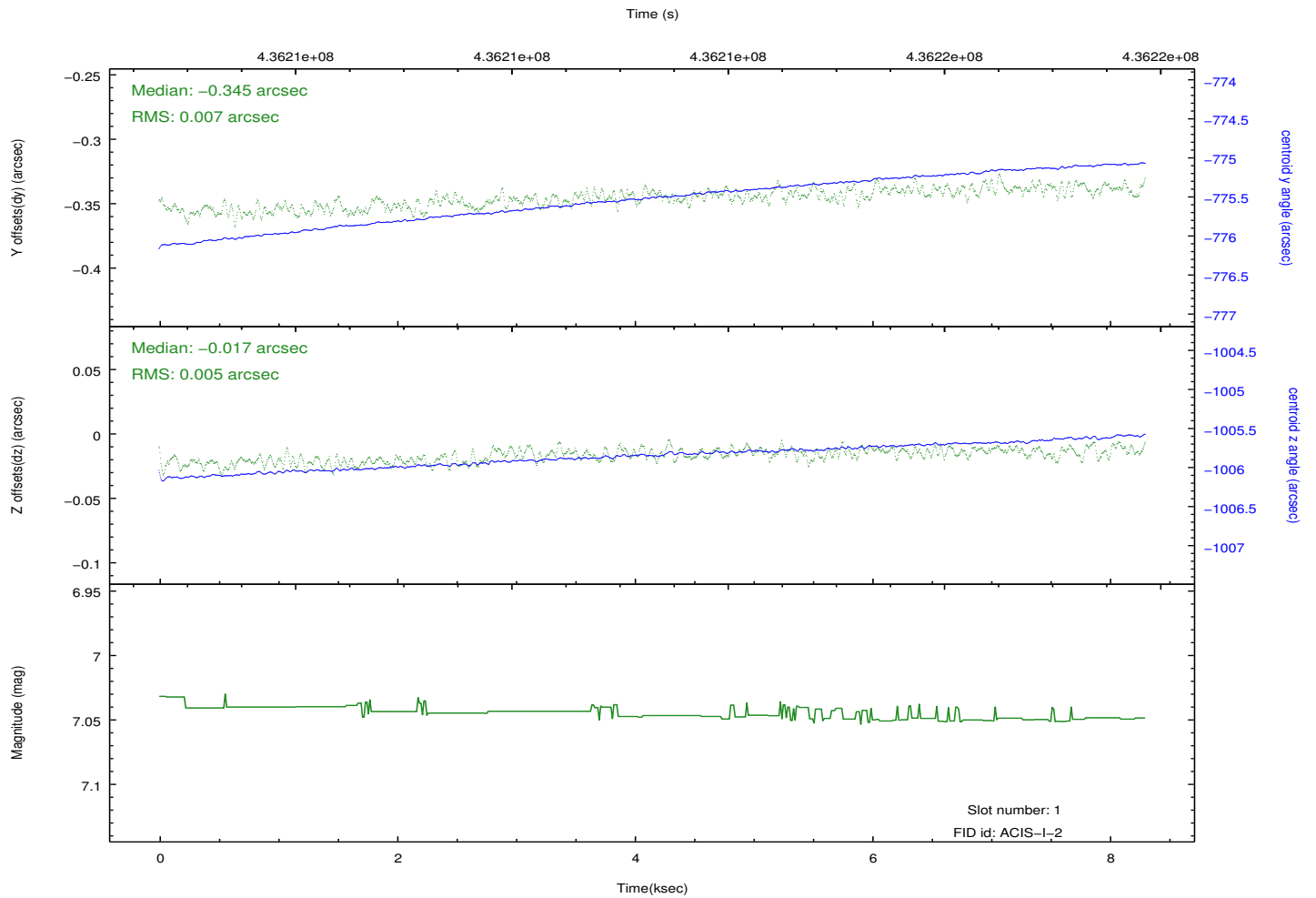
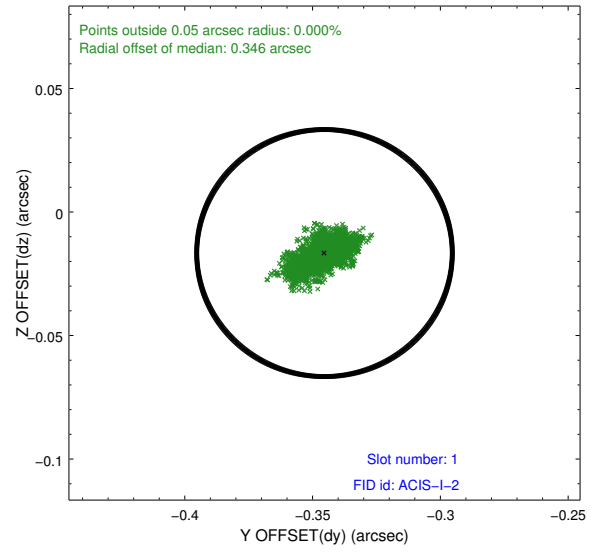
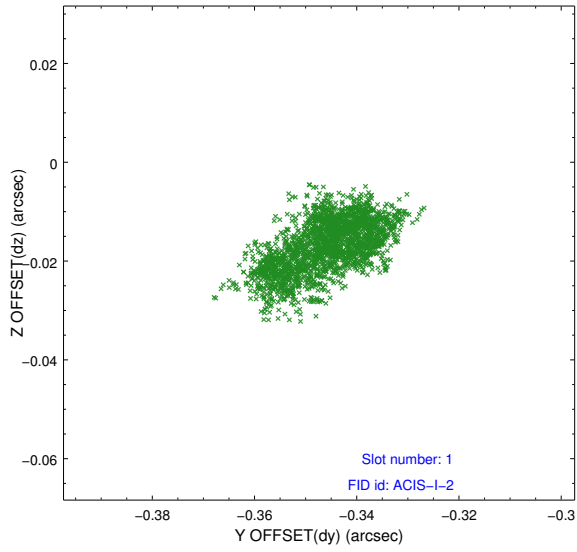


## 2.5 FID Slots

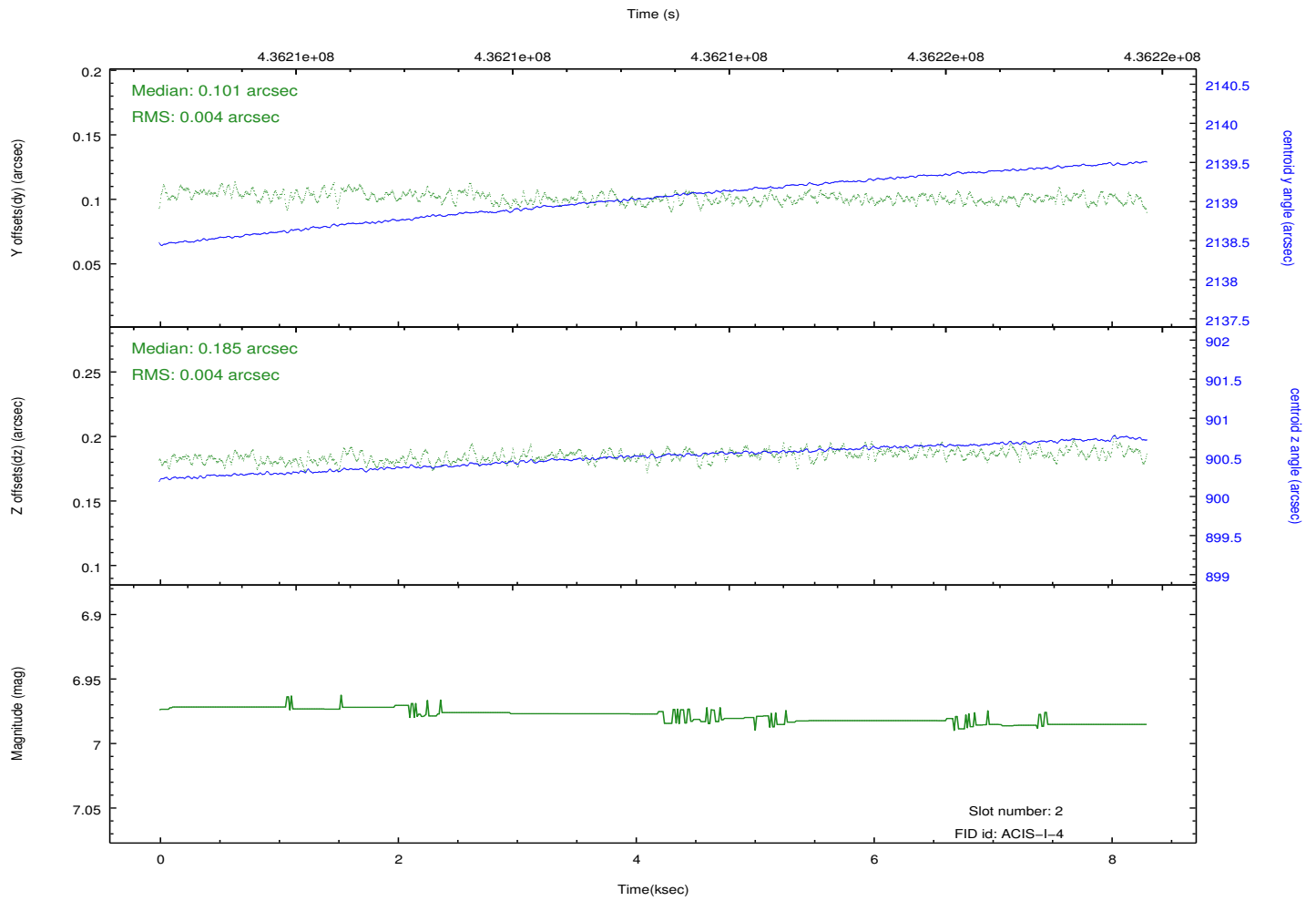
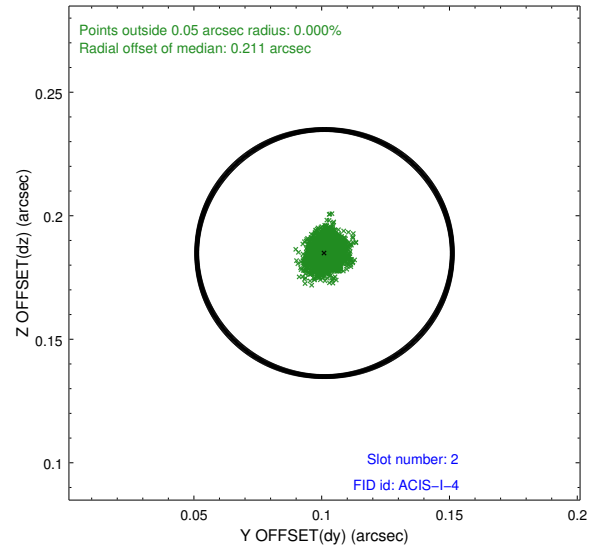
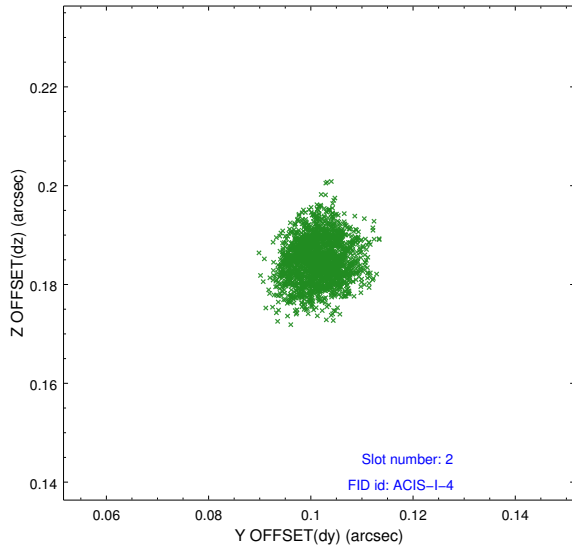
### 2.5.1 Slot 0



## 2.5.2 Slot 1



### 2.5.3 Slot 2



# A Summary

## A.1 Status

V&V Scientist	Jen Lauer
V&V Date (YYYY-MM-DD)	2012.03.02
V&V Edition	1
V&V Disposition and Status	OK
V&V Charge Time	8.0589045501351

## A.2 Comments