

V&V Reference Report

L2 ASCDS Version : 8.4.3

Observation 13676 - L2 Version 1
Chandra X-Ray Center

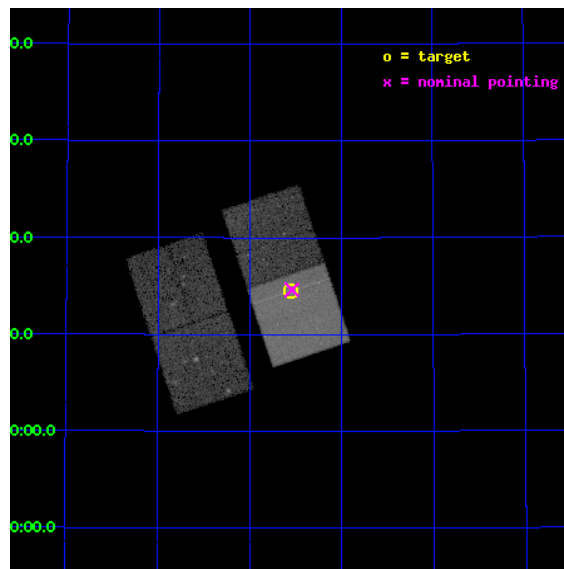
L2 Processing Date : Mar 19 2012

Contents

1	Front	2
2	OBI	3
2.1	OBI	3
2.1.1	Images	3
2.1.2	Bias	3
2.1.3	Parameters	4
2.1.4	Events	4
2.2	Compared Parameters	5
2.3	Aspect	6
2.4	Star Slots	9
2.4.1	Slot 3	9
2.4.2	Slot 4	10
2.4.3	Slot 5	11
2.4.4	Slot 6	12
2.4.5	Slot 7	13
2.5	FID Slots	14
2.5.1	Slot 0	14
2.5.2	Slot 1	15
2.5.3	Slot 2	16
A	Summary	17
A.1	Status	17
A.2	Comments	17

1 Front

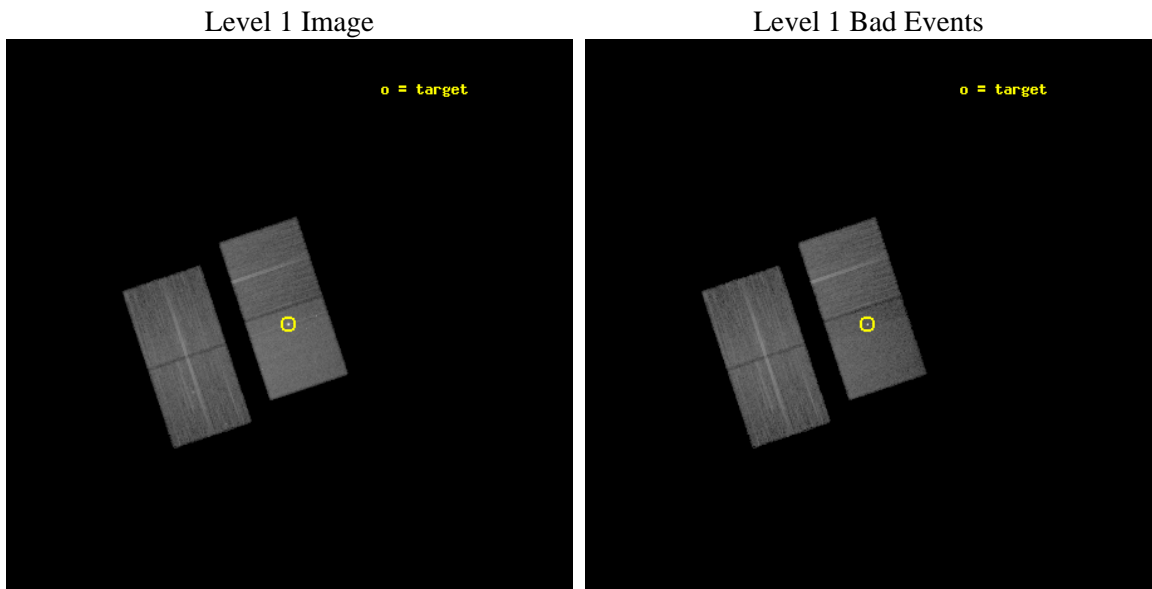
seq_num	300307	Sequence number
obs_id	13676	Observation id
title	Dynamical Evolution of the Recent Jet in CH Cyg	Proposal title
observer	DR. MARGARITA KAROVSKA	Principal investigator
object	CH Cyg	Source name
dtycycle	0	
cycle	P	events from which exps? Prim/Second/Both
ra_targ	291.137917	Observer's specified target RA [deg]
dec_targ	50.241417	Observer's specified target Dec [deg]
ra_nom	291.13494279566	Nominal RA [deg]
dec_nom	50.243747541008	Nominal Dec [deg]
roll_nom	71.653110354267	Nominal Roll [deg]
revision	1	Processing version of data
ontime	30078.956939042	Sum of GTIs [s]
liveltime	29685.953222827	Livetime [s]
ontime2	30078.833819032	Sum of GTIs [s]
ontime3	30078.874859035	Sum of GTIs [s]
ontime6	30078.915899038	Sum of GTIs [s]
ontime7	30078.956939042	Sum of GTIs [s]
l2events	150598	Number of level 2 events



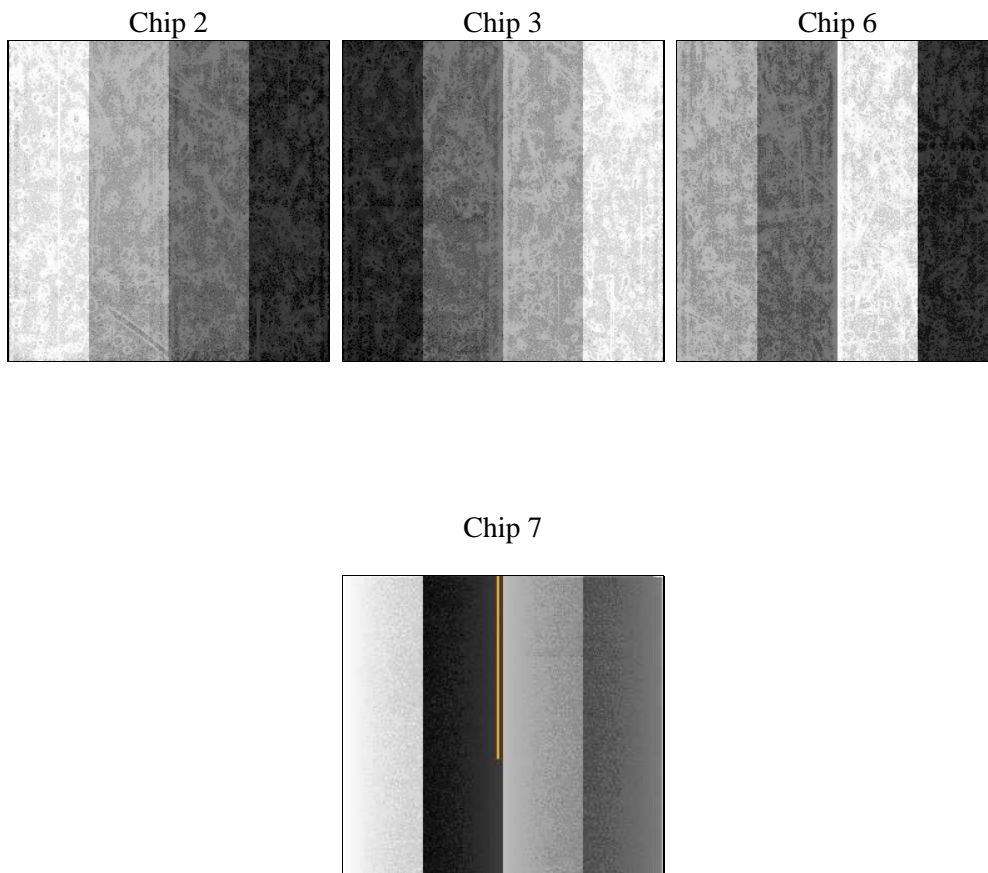
2 OBI

2.1 OBI

2.1.1 Images



2.1.2 Bias



2.1.3 Parameters

obi_num	1	Obi number	sched_exp_time	30000.904000	[s] Scheduled observation exposure time
ascdsver	8.4.3	Processing system revision	ontime	30078.956939042	Sum of GTIs [s]
caldsver	4.4.8	 	ontime2	30078.833819032	Sum of GTIs [s]
date	2012-03-19T05:07:18	Date and time of file creation	ontime3	30078.874859035	Sum of GTIs [s]
revision	1	Processing version of data	ontime6	30078.915899038	Sum of GTIs [s]
			ontime7	30078.956939042	Sum of GTIs [s]
			l1events	700952	Number of level 1 events

2.1.4 Events

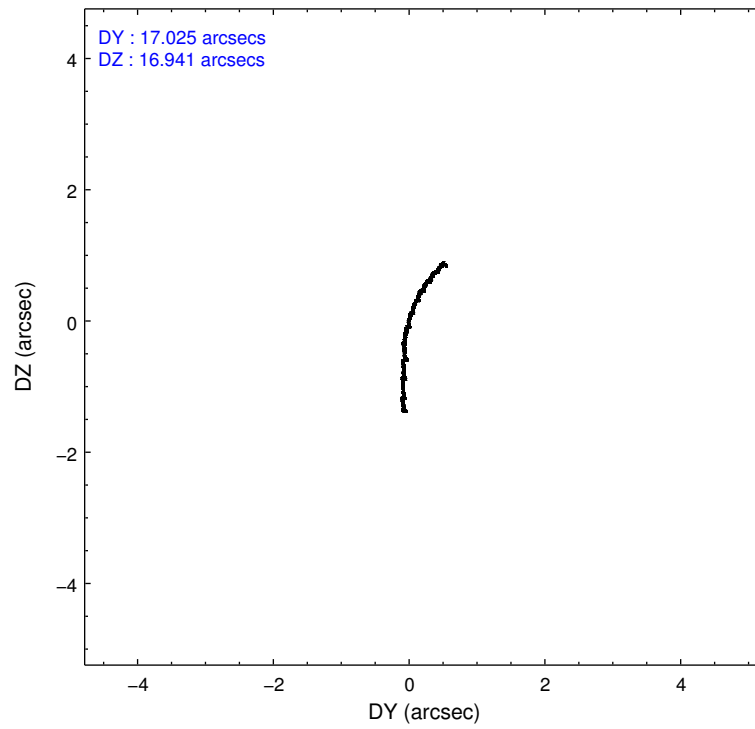
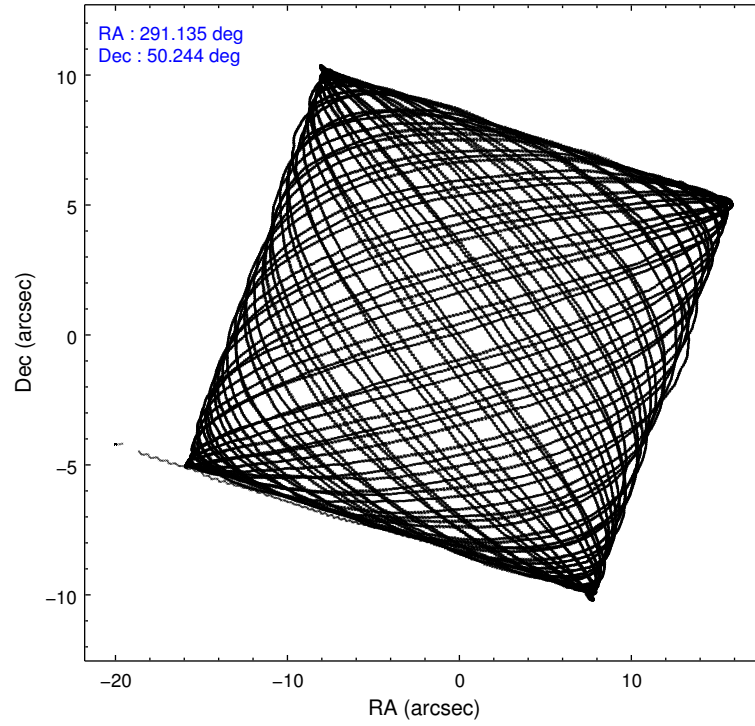
	ccd 2	ccd 3	ccd 6	ccd 7
level 1 events	156591	153021	160919	230421
rejected events	137900	134931	140895	126598
rejected %	88%	88%	87%	54%

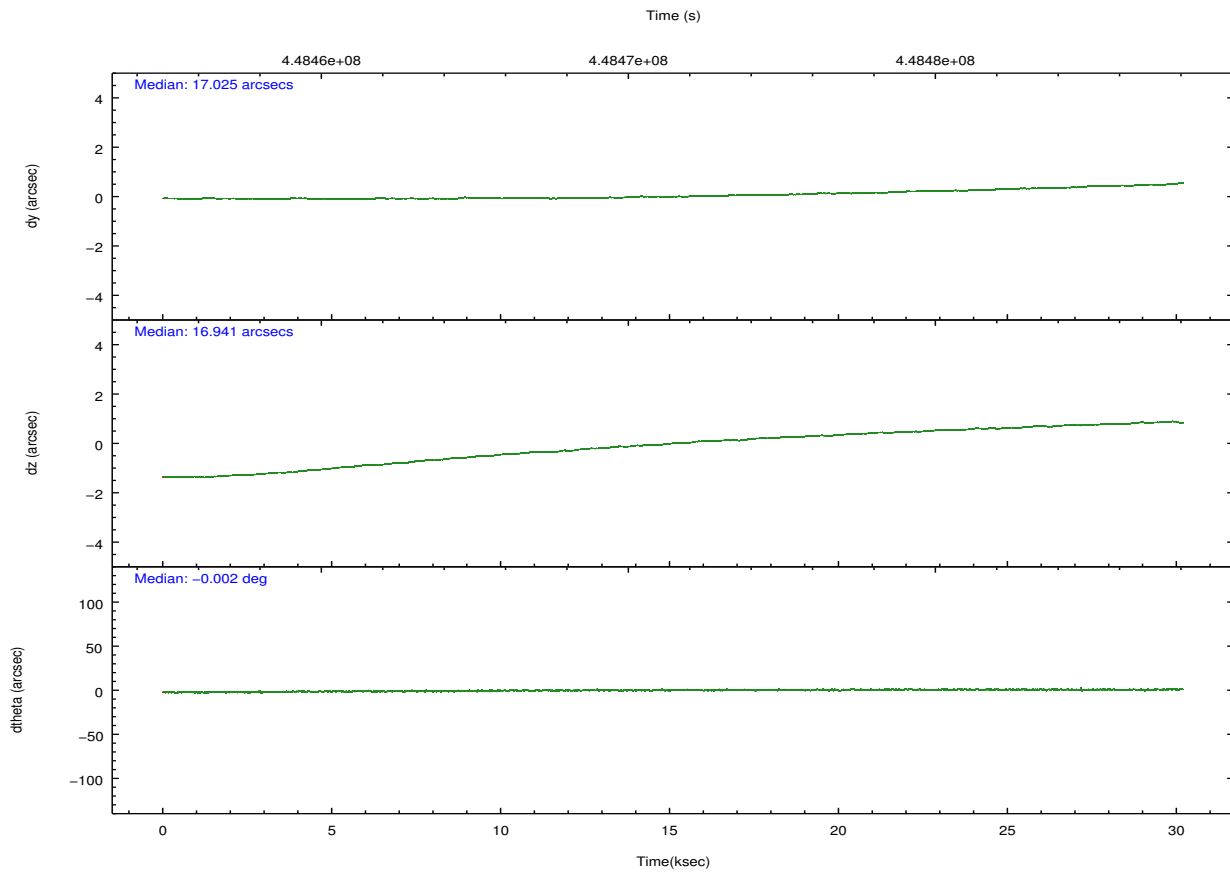
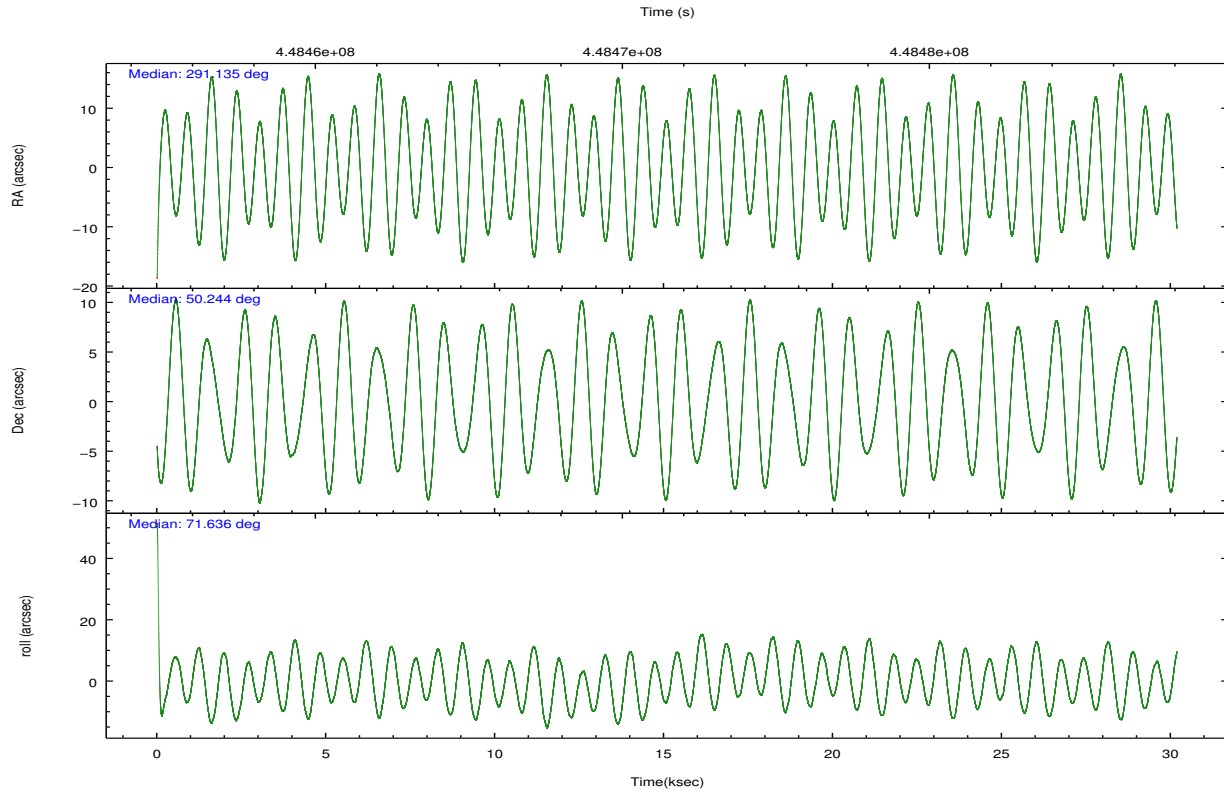
	ccd 2	ccd 3	ccd 6	ccd 7
grade 0 events	6685	6632	7016	11017
	4%	4%	4%	4%
grade 1 events	89	94	85	519
	0%	0%	0%	0%
grade 2 events	4454	3939	4435	21399
	2%	2%	2%	9%
grade 3 events	1906	1932	2047	9127
	1%	1%	1%	3%
grade 4 events	1902	1905	2013	8986
	1%	1%	1%	3%
grade 5 events	6737	8106	8099	22882
	4%	5%	5%	9%
grade 6 events	3749	3686	4518	53321
	2%	2%	2%	23%
grade 7 events	131069	126727	132706	103170
	83%	82%	82%	44%

2.2 Compared Parameters

Parameter	Planned	Actual	Parameter	Planned	Actual
Instrument	ACIS	ACIS	Obspar format version number	7	7
Detector	ACIS-2367	ACIS-2367	Obspar file type	PREDICTED	ACTUAL
Grating	NONE	NONE	Obspar update status	NONE	UPDATED
Data mode	FAINT	FAINT	Number of optional ACIS chips dropped	0	0
Observation mode	POINTING	POINTING	On-chip summing requested	N	N
[deg] Pointing RA	291.144122	291.1349427956571	Subarray requested	NONE	NONE
[deg] Pointing Dec	50.217063	50.24374754100763	Alternating exposures requested	N	N
[deg] Pointing Roll	71.489414	71.65311035426679	[s] Primary exposure time	0.000000	3.1
[mm] SIM focus pos	-0.684267	-0.6828225247311905			
[mm] SIM defocus	0	0.001444936568705701			
[mm] SIM translation stage pos	-190.132523	-190.1400660498719			
[mm] SIM translation stage offset	0	0.00754346686406393			
[s] Observation start time (MET)	448456546.184000	448455449.73753			
Observation start date	2012-03-18T11:14:40	2012-03-18T10:57:29			
[s] Observation end time (MET)	448486547.184000	448486773.22669			
Observation end date	2012-03-18T19:34:41	2012-03-18T19:39:33			
Read mode	TIMED	TIMED			

2.3 Aspect



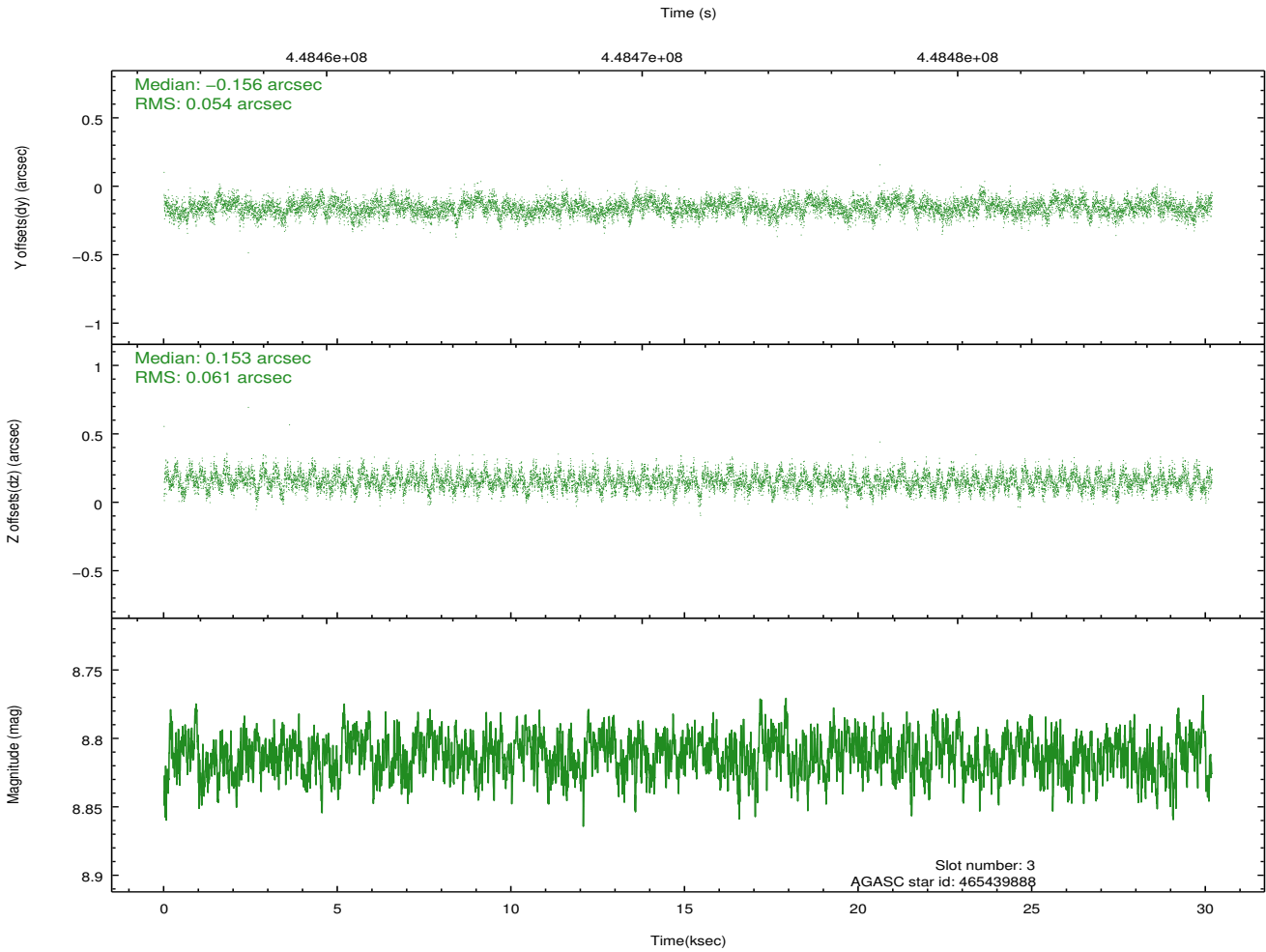
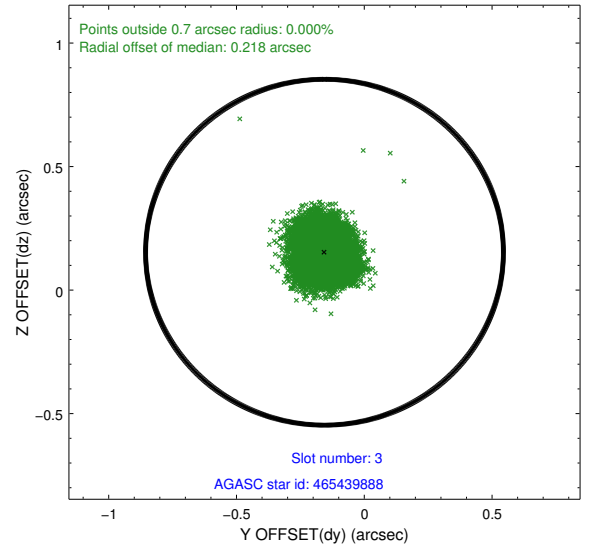
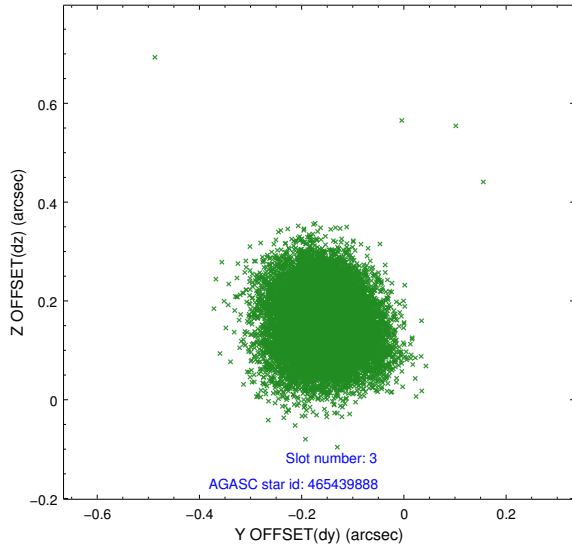


Slot Statistics

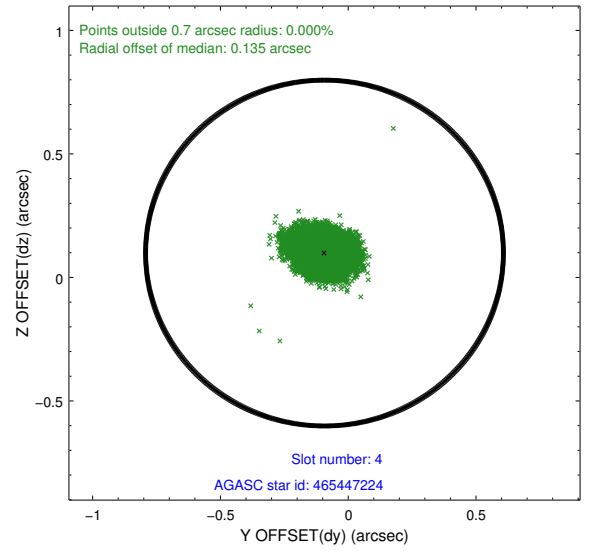
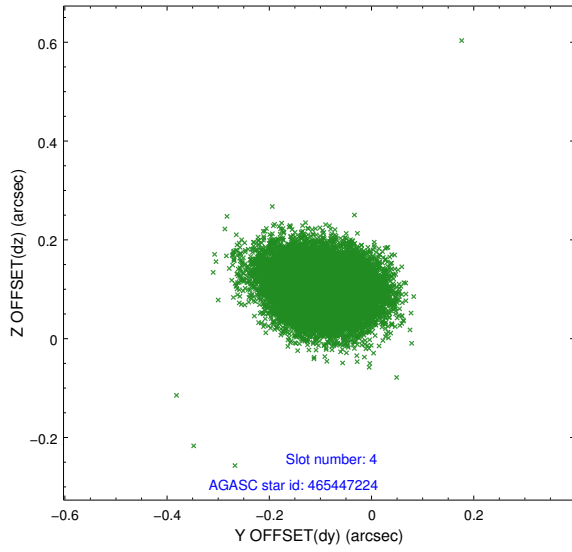
slot	status	id	mag	n_pts	med_dy	med_dz	dr1	dr2	ra	dec	mean_y	mean_z
0	FID	ACIS-S-2	6.91	7362	-0.117	-0.074	0.007	0.014	0.000000	0.000000	-770.31	-1738.29
1	FID	ACIS-S-4	6.99	7362	0.167	0.049	0.007	0.012	0.000000	0.000000	2143.28	170.14
2	FID	ACIS-S-6	7.12	7361	-0.078	0.033	0.008	0.013	0.000000	0.000000	391.89	807.66
3	GUIDE	465439888	8.81	14719	-0.156	0.153	0.088	0.140	291.753626	50.234695	511.55	-1308.19
4	GUIDE	465447224	8.27	14723	-0.093	0.099	0.074	0.121	291.830226	50.402668	1140.77	-1277.80
5	GUIDE	465456704	7.03	14724	0.183	-0.028	0.094	0.173	290.849115	50.271291	-28.68	706.20
6	GUIDE	465439824	6.83	14724	-0.014	-0.391	0.094	0.144	290.131117	50.340225	-303.34	2352.51
7	GUIDE	465447232	8.95	14689	0.070	0.168	0.111	0.173	291.671863	50.155078	179.71	-1223.14

2.4 Star Slots

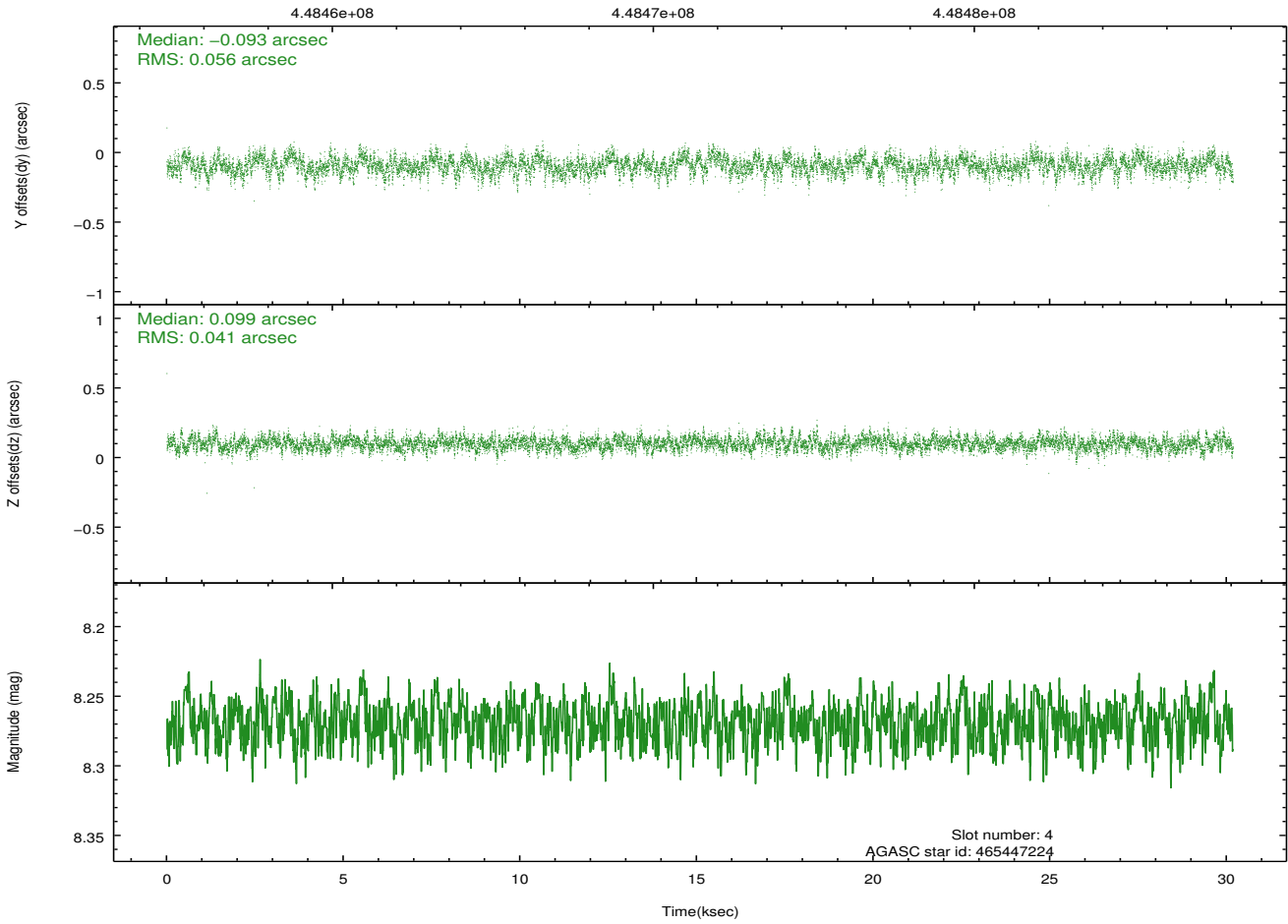
2.4.1 Slot 3



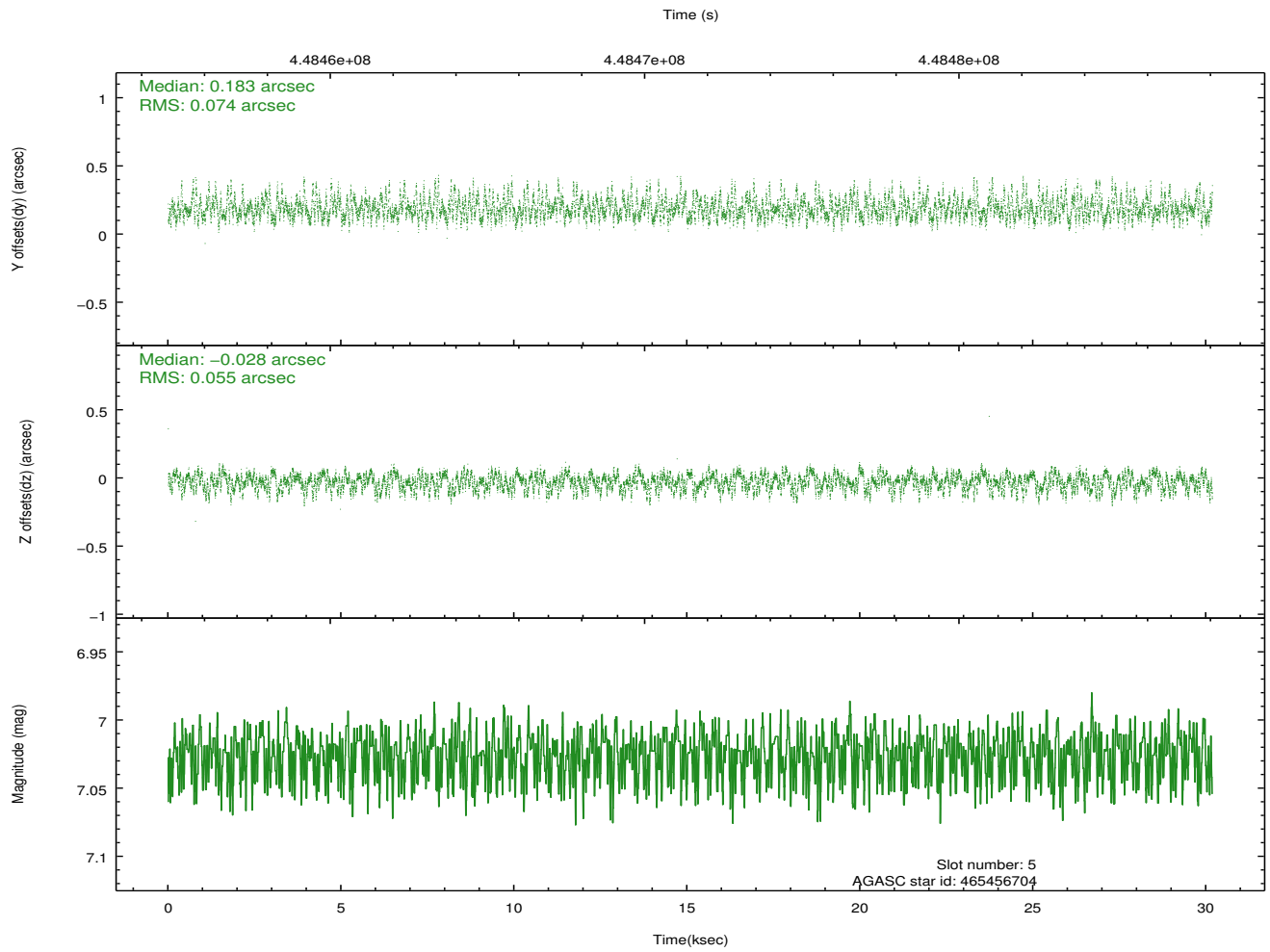
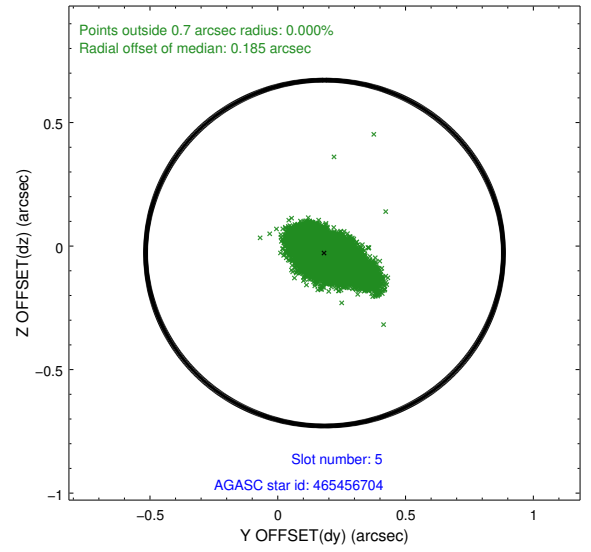
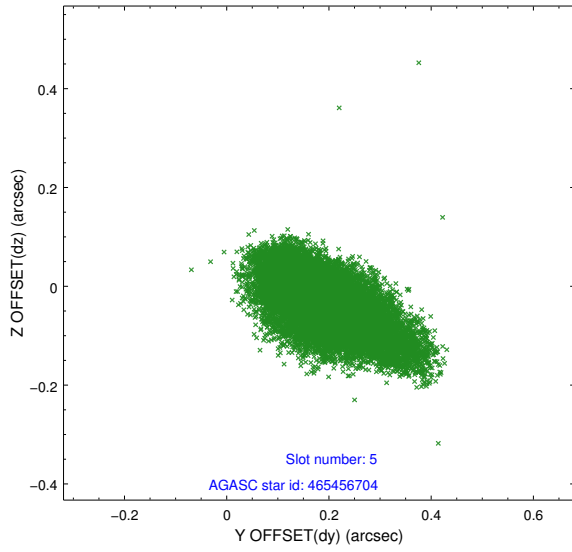
2.4.2 Slot 4



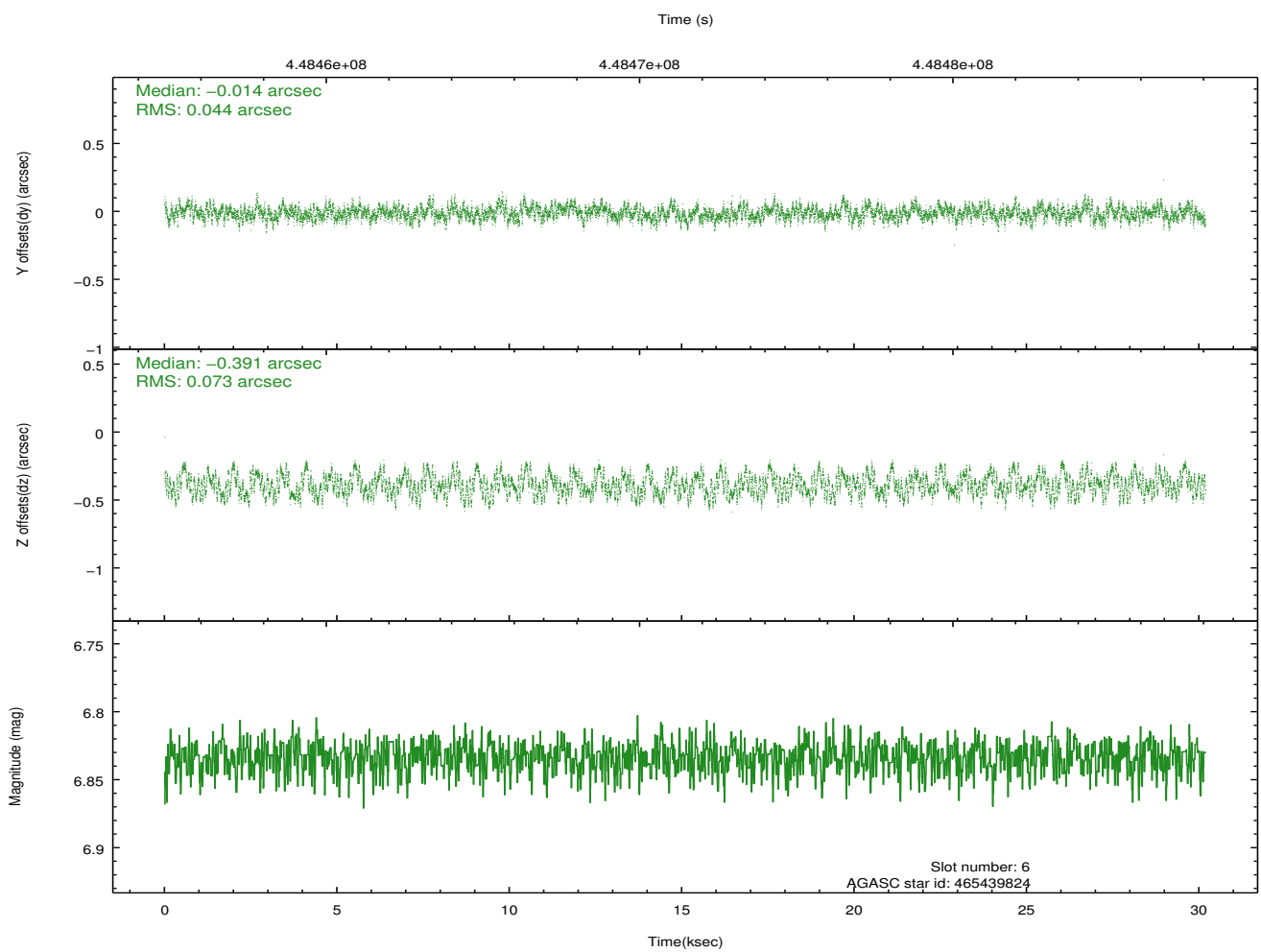
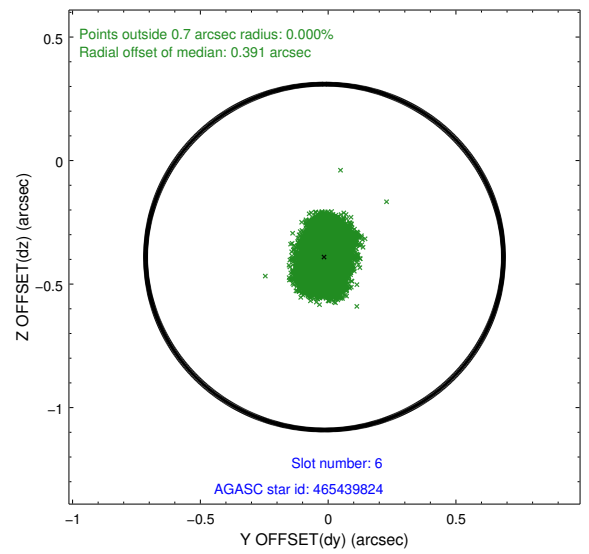
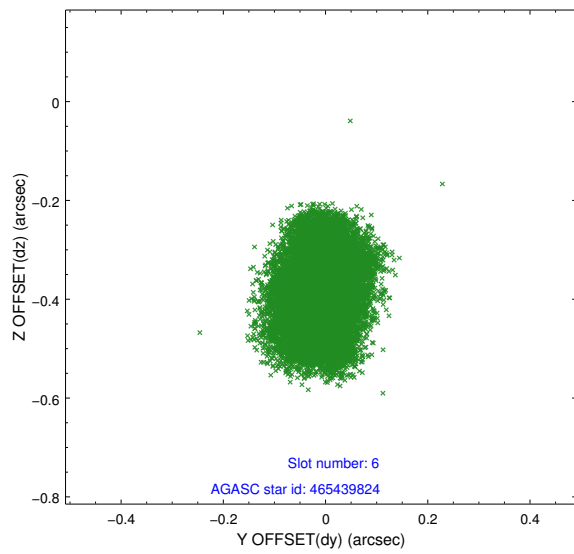
Time (s)



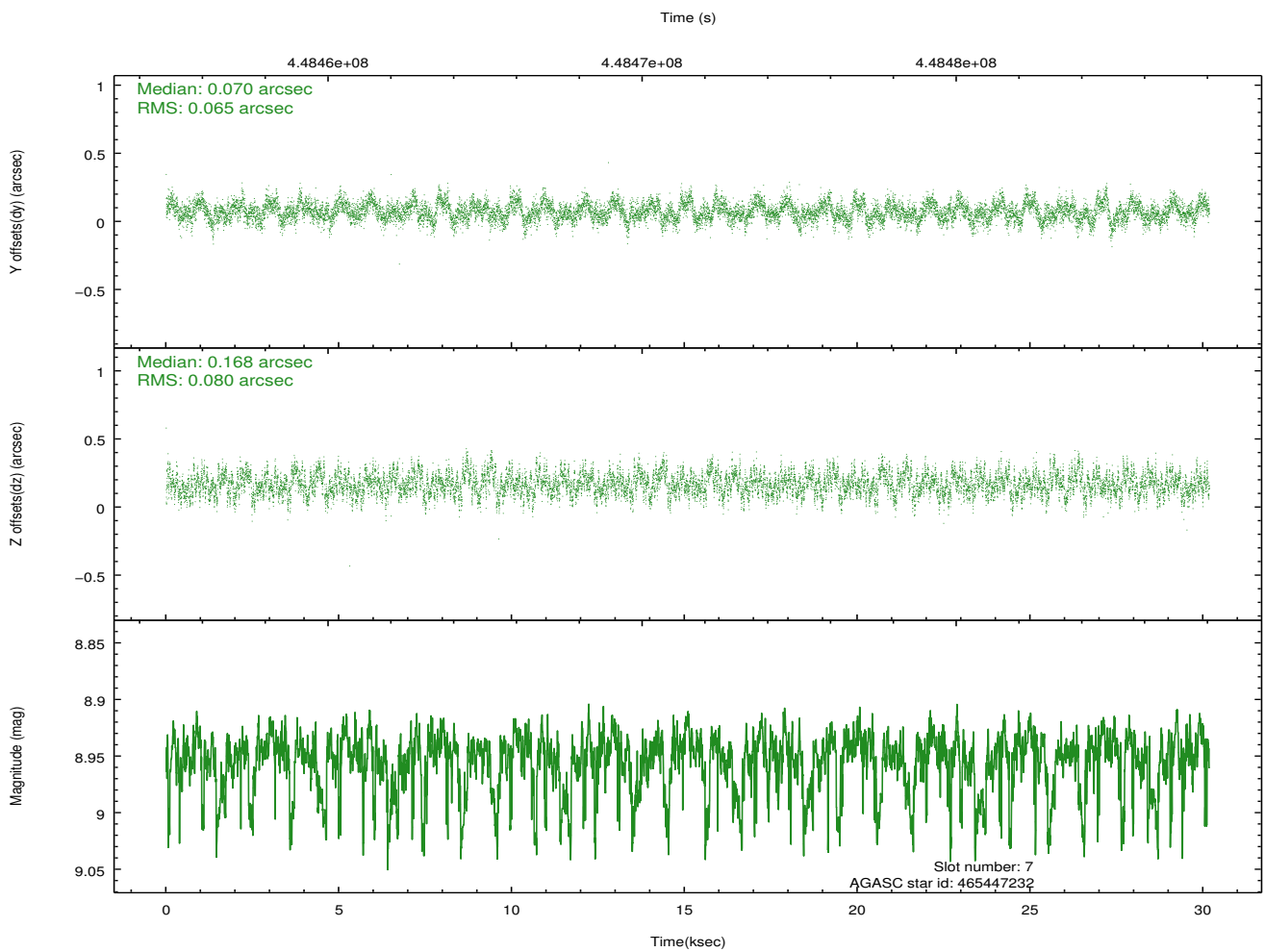
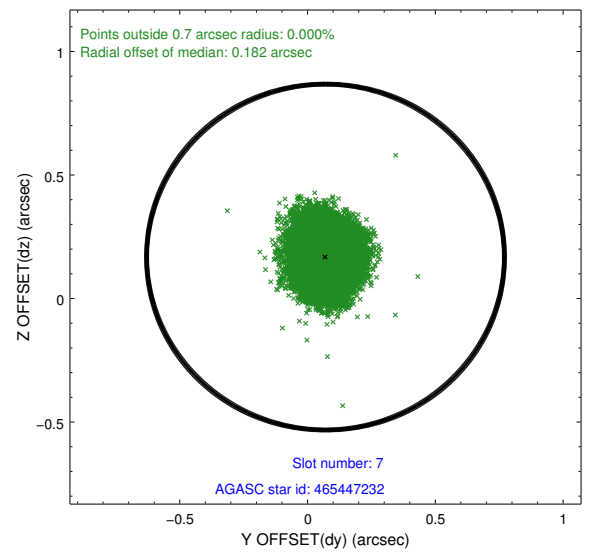
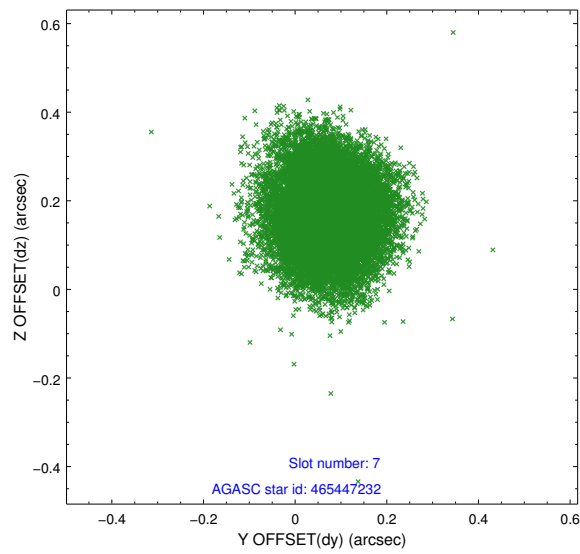
2.4.3 Slot 5



2.4.4 Slot 6

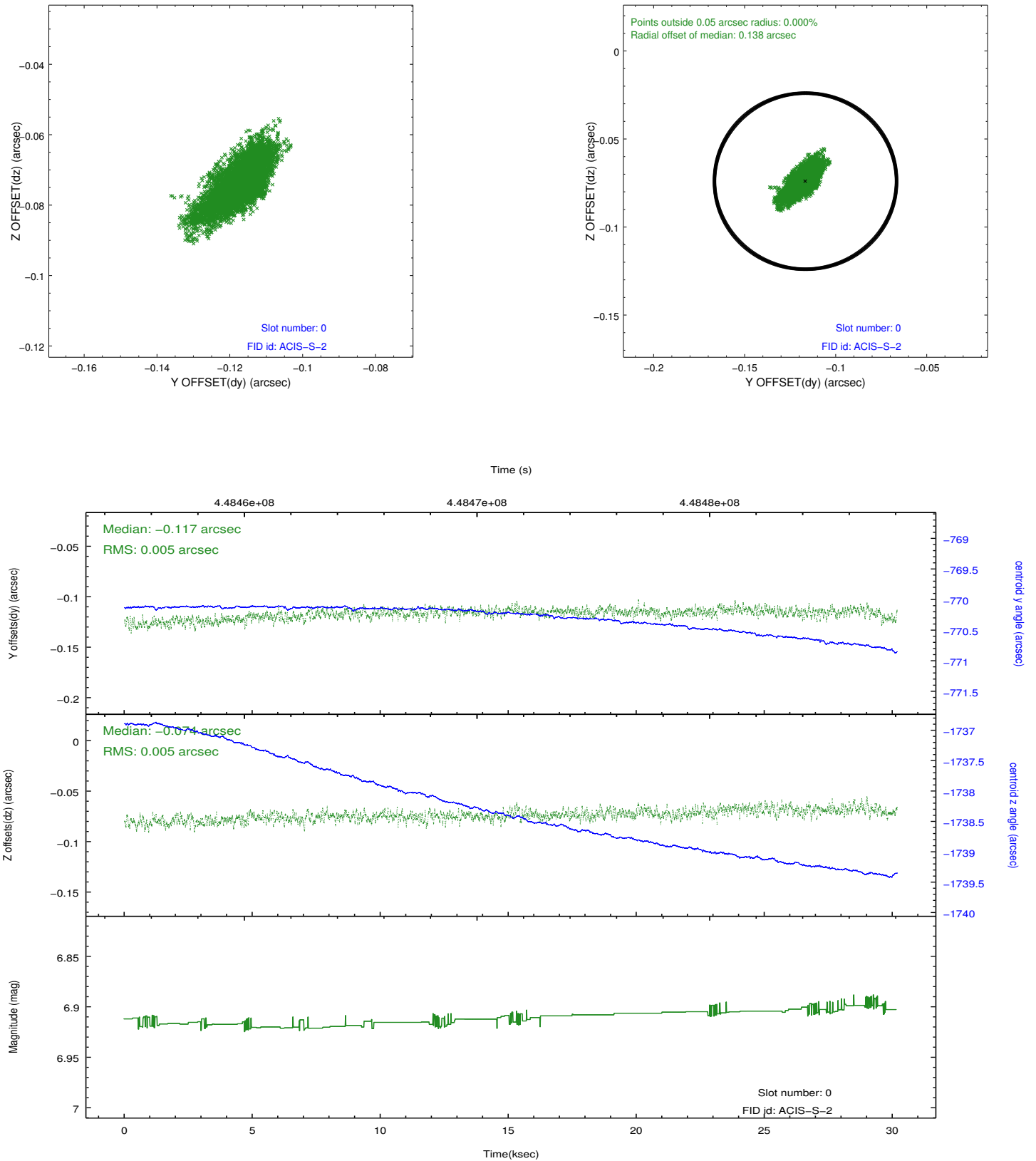


2.4.5 Slot 7

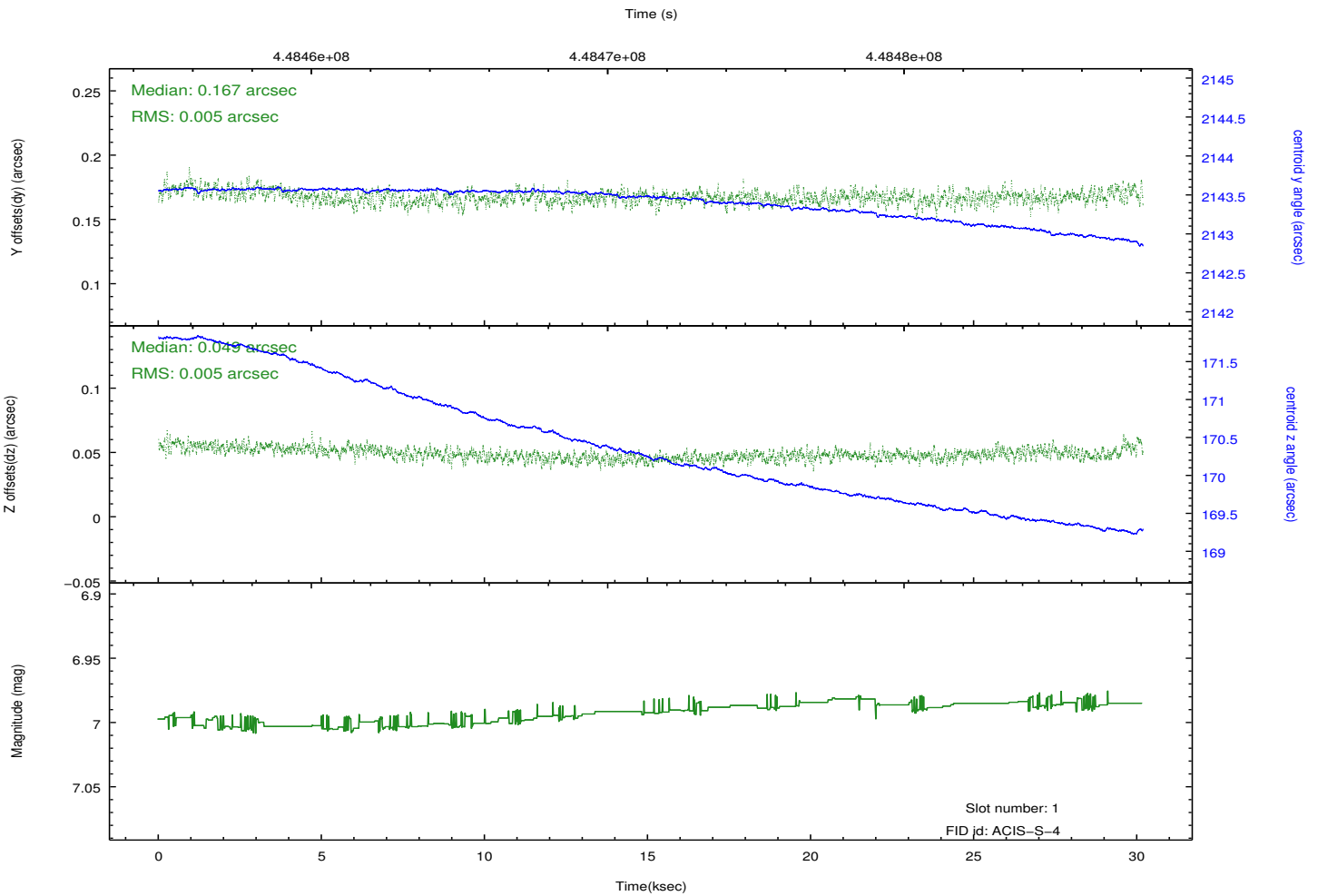
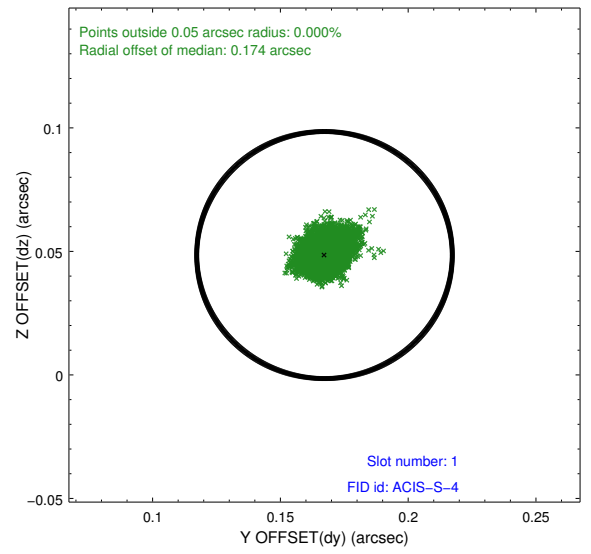
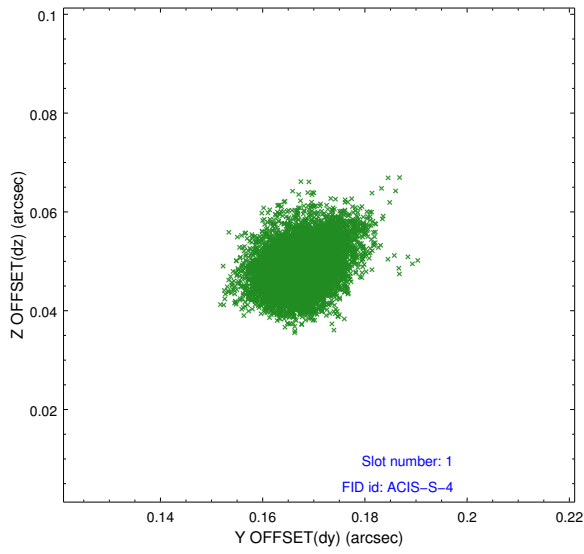


2.5 FID Slots

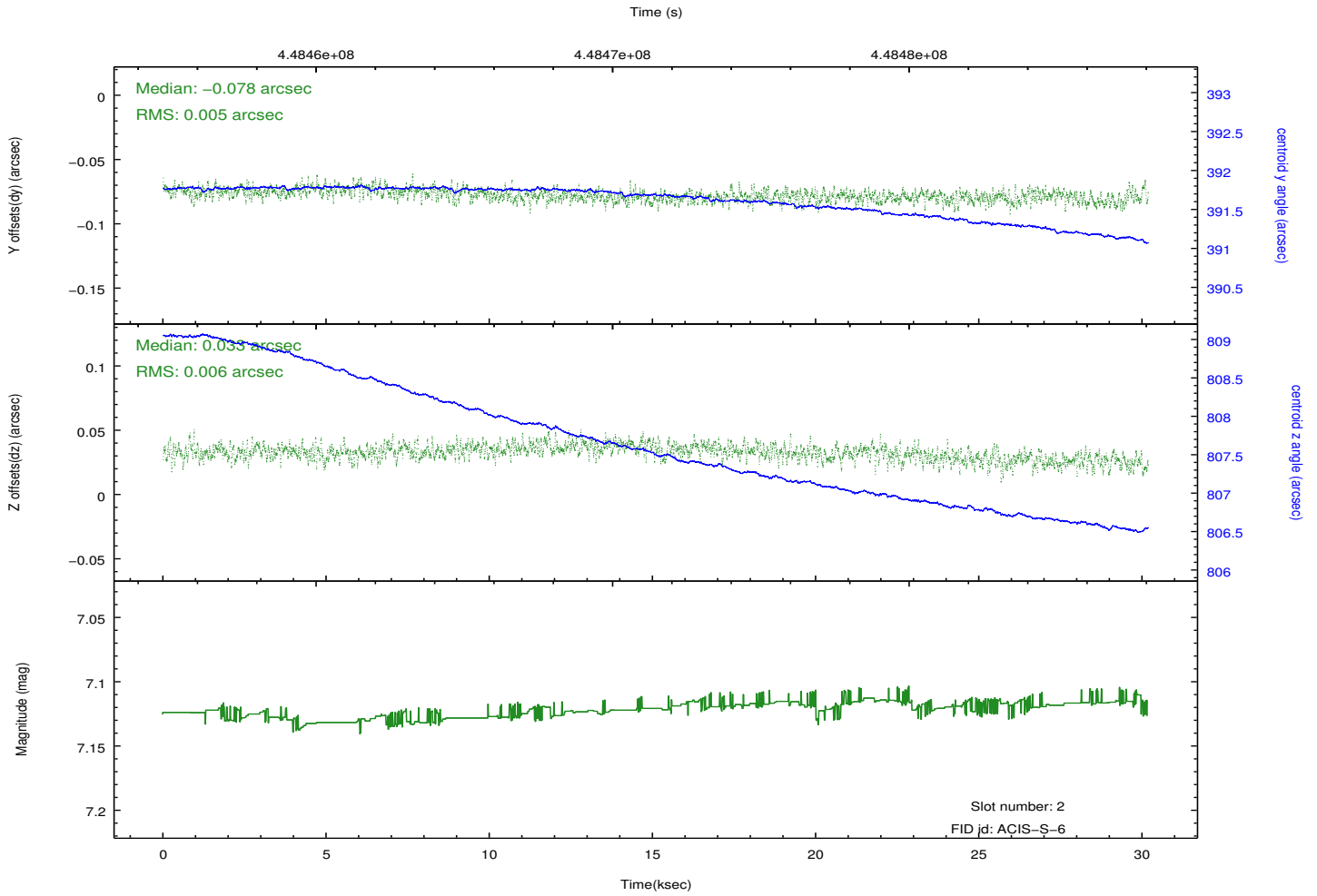
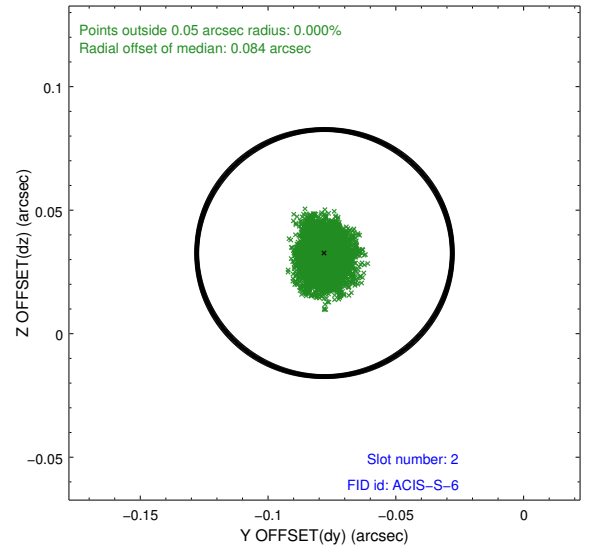
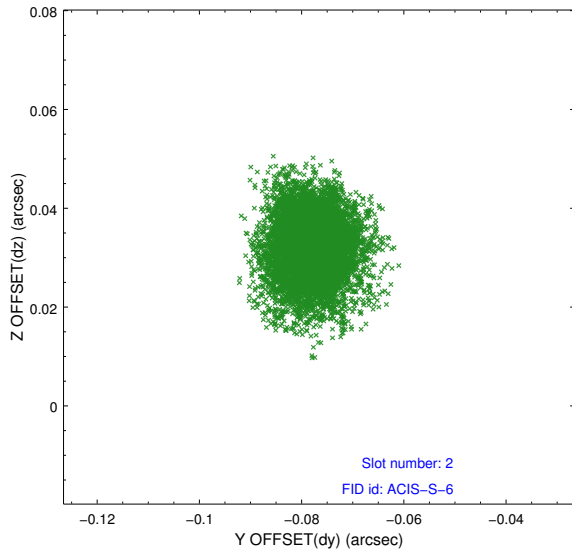
2.5.1 Slot 0



2.5.2 Slot 1



2.5.3 Slot 2



A Summary

A.1 Status

V&V Scientist	Jen Lauer
V&V Date (YYYY-MM-DD)	2012.03.19
V&V Edition	1
V&V Disposition and Status	OK
V&V Charge Time	30.078956939042

A.2 Comments

Joint Proposal: HST