

V&V Reference Report

L2 ASCDS Version : 8.4.3

Observation 13746 - L2 Version 1
Chandra X-Ray Center

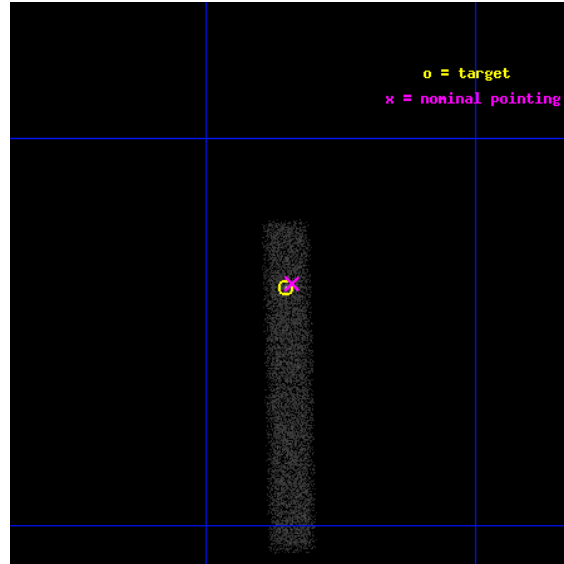
L2 Processing Date : Feb 19 2012

Contents

1	Front	2
2	OBI	3
2.1	OBI	3
2.1.1	Images	3
2.1.2	Bias	3
2.1.3	Parameters	4
2.1.4	Events	4
2.2	Compared Parameters	5
2.3	Aspect	6
2.4	Star Slots	9
2.4.1	Slot 3	9
2.4.2	Slot 4	10
2.4.3	Slot 5	11
2.4.4	Slot 6	12
2.4.5	Slot 7	13
2.5	FID Slots	14
2.5.1	Slot 0	14
2.5.2	Slot 1	15
2.5.3	Slot 2	16
A	Summary	17
A.1	Status	17
A.2	Comments	17

1 Front

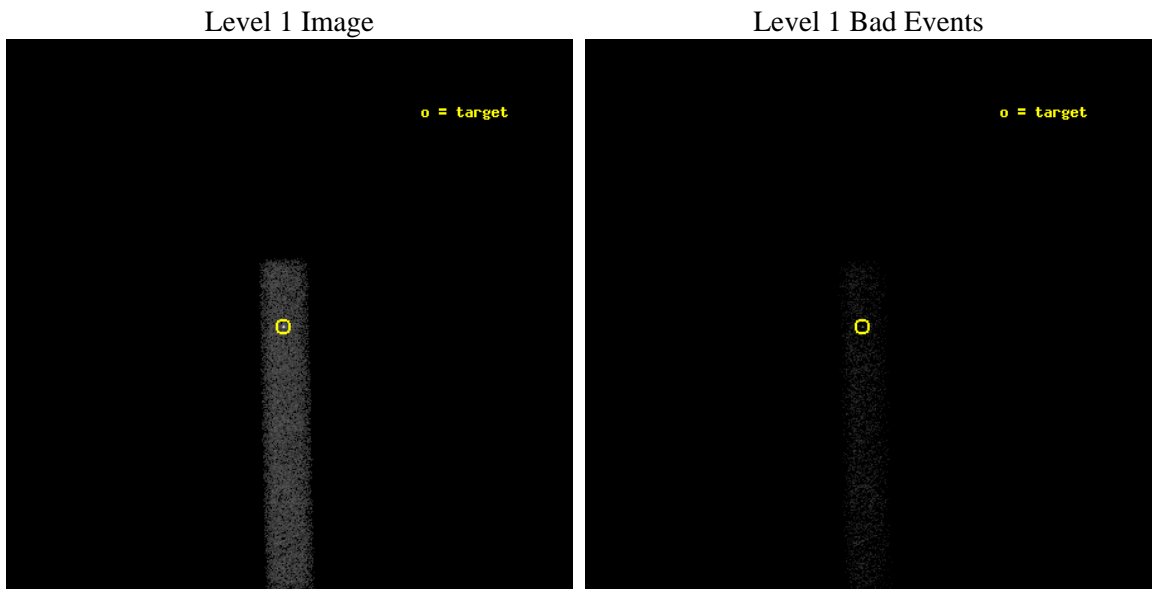
seq_num	501579	Sequence number
obs_id	13746	Observation id
title	Unveiling the nature of cyclic behavior in the period evolution of the Anomalous X ray Pulsar XTE j1810-197	Proposal title
observer	Dr. Federico Bernardini	Principal investigator
object	XTE J1810-197	Source name
dtcycle	0	
cycle	P	events from which exps? Prim/Second/Both
ra_targ	272.462917	Observer's specified target RA [deg]
dec_targ	-19.731083	Observer's specified target Dec [deg]
ra_nom	272.4602456514	Nominal RA [deg]
dec_nom	-19.729413592111	Nominal Dec [deg]
roll_nom	88.780275816155	Nominal Roll [deg]
revision	1	Processing version of data
ontime	20069.998803735	Sum of GTIs [s]
livetime	18202.429533589	Livetime [s]
ontime7	20069.998803735	Sum of GTIs [s]
l2events	13820	Number of level 2 events



2 OBI

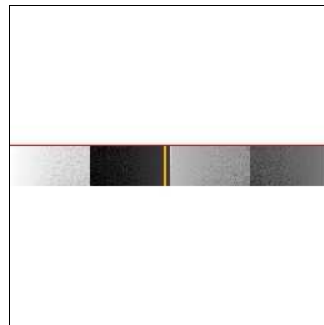
2.1 OBI

2.1.1 Images



2.1.2 Bias

Chip 7



2.1.3 Parameters

obi_num	0	Obi number	sched_exp_time	20000.000000	[s] Scheduled observation exposure time
ascdsver	8.4.3	Processing system revision	ontime	20069.998803735	Sum of GTIs [s]
caldbver	4.4.8	 	ontime7	20069.998803735	Sum of GTIs [s]
date	2012-02-19T23:02:51	Date and time of file creation	l1events	24870	Number of level 1 events
revision	1	Processing version of data			

2.1.4 Events

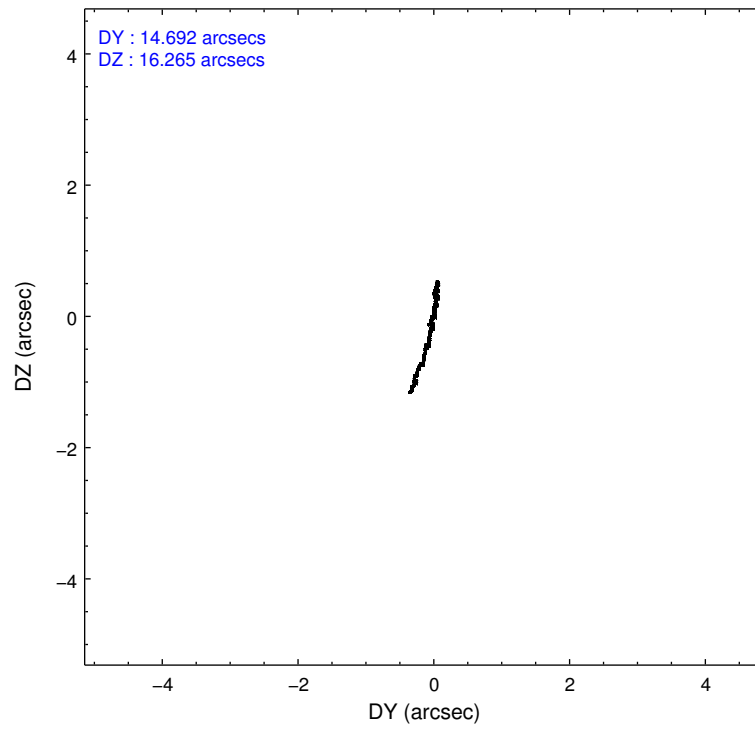
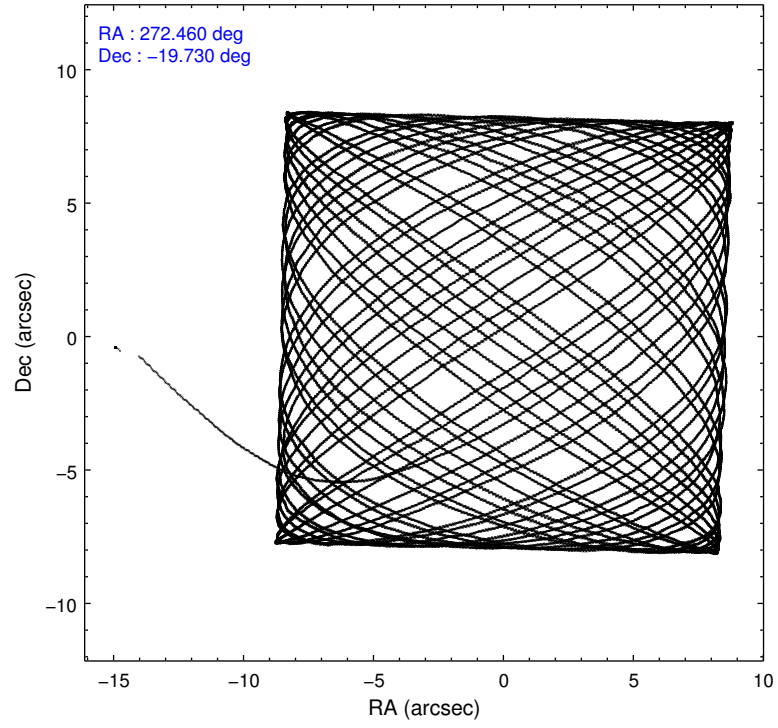
	ccd 7
level 1 events	24870
rejected events	10600
rejected %	42%

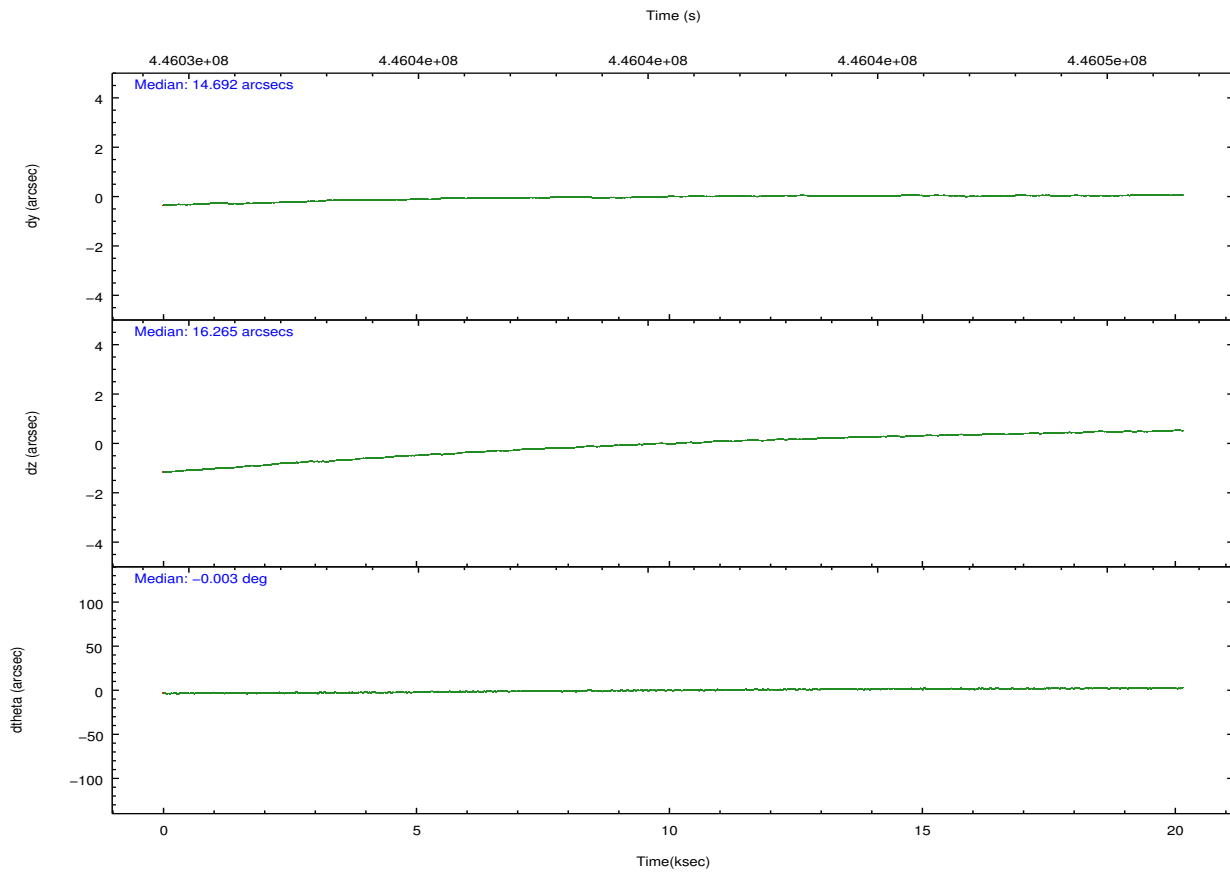
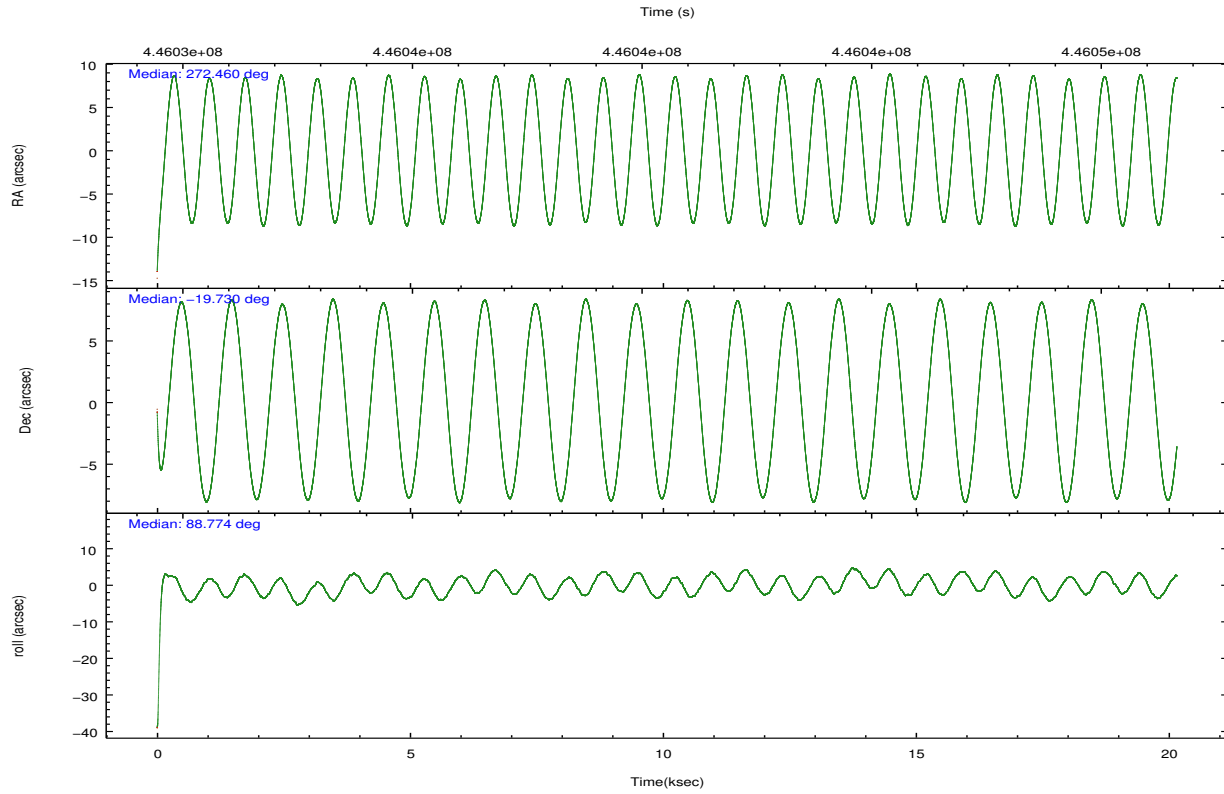
	ccd 7
grade 0 events	2147
	8%
grade 1 events	42
	0%
grade 2 events	3073
	12%
grade 3 events	1861
	7%
grade 4 events	1807
	7%
grade 5 events	2132
	8%
grade 6 events	5383
	21%
grade 7 events	8425
	33%

2.2 Compared Parameters

Parameter	Planned	Actual	Parameter	Planned	Actual
Instrument	ACIS	ACIS	Obspar format version number	7	7
Detector	ACIS-7	ACIS-7	Obspar file type	PREDICTED	ACTUAL
Grating	NONE	NONE	Obspar update status	NONE	UPDATED
Data mode	VFAINT	VFAINT	Number of optional ACIS chips dropped	0	0
Observation mode	POINTING	POINTING	On-chip summing requested	N	N
[deg] Pointing RA	272.474574	272.4602456513963	Subarray requested	CUSTOM	1/8
[deg] Pointing Dec	-19.753190	-19.72941359211052	Subarray start row	449	449
[deg] Pointing Roll	88.628512	88.78027581615459	Subarray row count	128	128
[s] Window start time (MET)	444441666.184000	444441666.184000	Alternating exposures requested	N	N
[s] Window stop time (MET)	446860806.184000	446860806.184000	[s] Primary exposure time	0.000000	0.4
[mm] SIM focus pos	-0.684267	-0.6828225247311905			
[mm] SIM defocus	0	0.001444936568705701			
[mm] SIM translation stage pos	-190.132523	-190.1400660498719			
[mm] SIM translation stage offset	0	0.00754346686406393			
[s] Observation start time (MET)	446030615.184000	446029340.7215			
Observation start date	2012-02-19T09:22:29	2012-02-19T09:02:20			
[s] Observation end time (MET)	446050615.184000	446051877.9102			
Observation end date	2012-02-19T14:55:49	2012-02-19T15:17:57			
Read mode	TIMED	TIMED			

2.3 Aspect





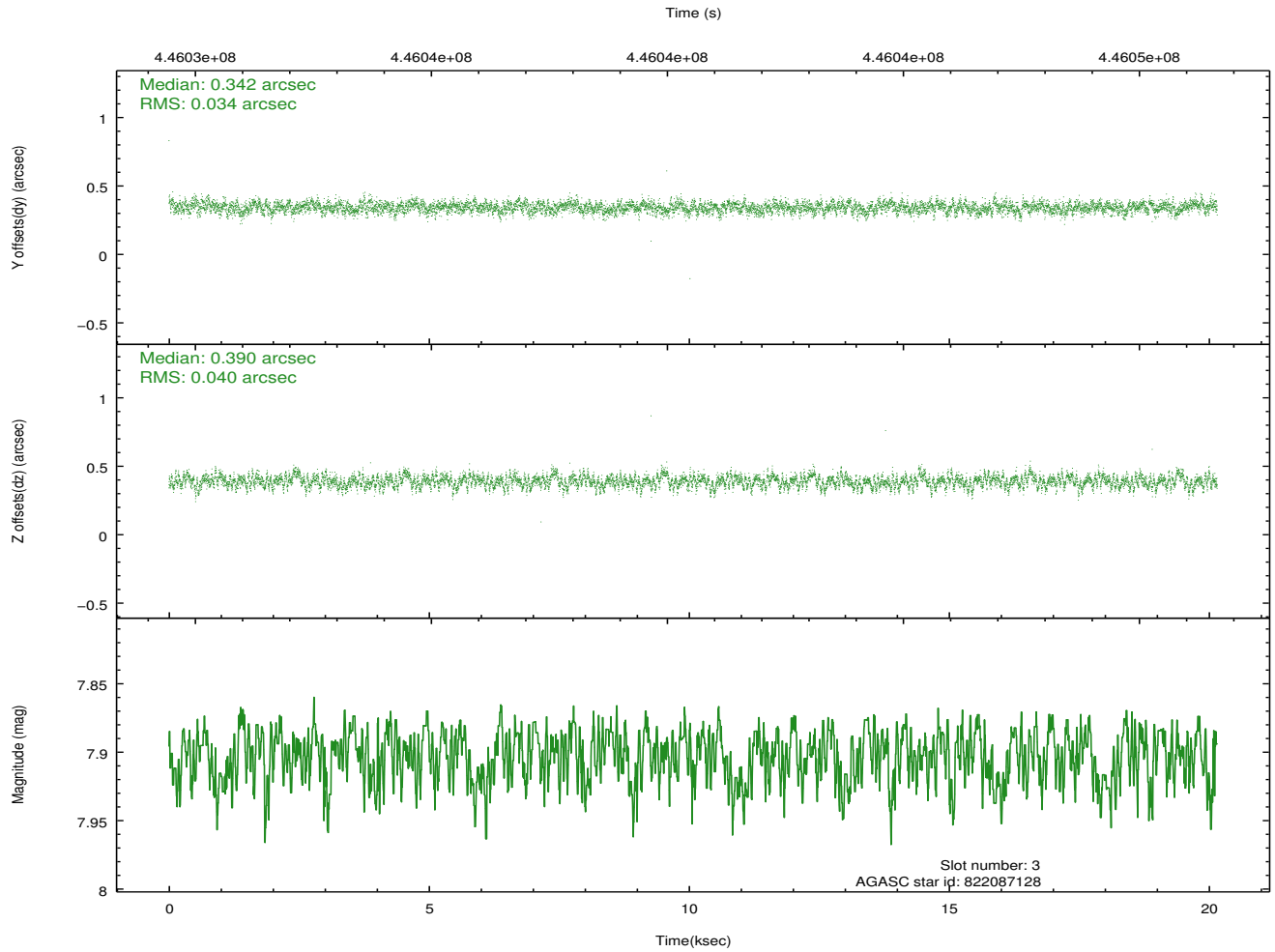
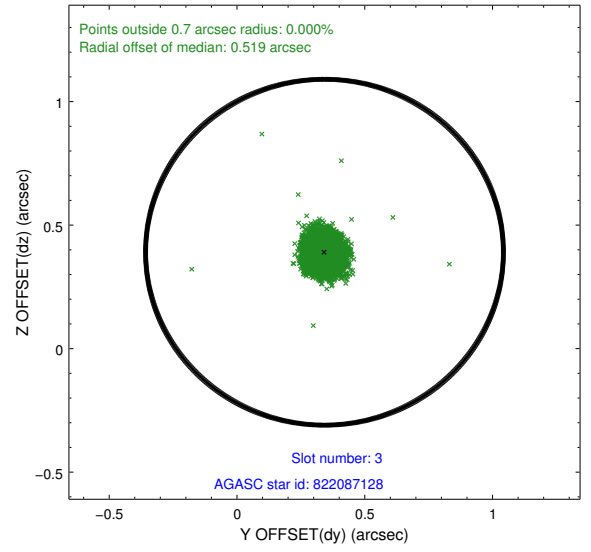
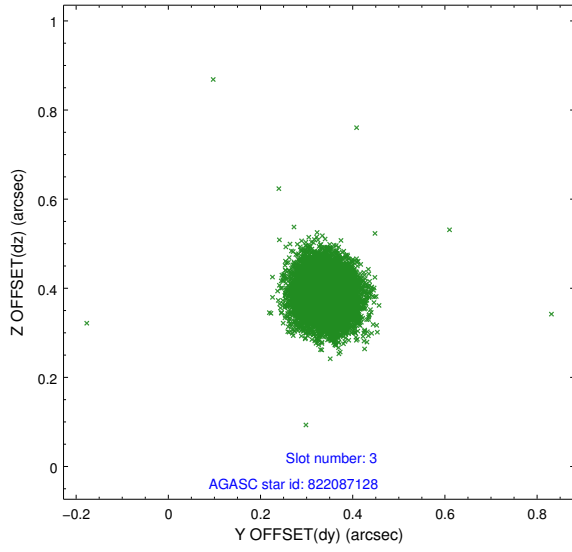
Slot Statistics

slot	status	id	mag	n_pts	med_dy	med_dz	dr1	dr2	ra	dec	mean_y	mean_z
0	FID	ACIS-S-2	6.88	4917	-0.092	-0.003	0.010	0.016	0.000000	0.000000	-767.71	-1737.56
1	FID	ACIS-S-4	6.96	4917	0.225	0.046	0.009	0.015	0.000000	0.000000	2145.82	170.74
2	FID	ACIS-S-5	6.99	4917	-0.165	-0.034	0.010	0.015	0.000000	0.000000	-1820.37	164.59
3	GUIDE	822087128	7.90	9832	0.342	0.390	0.055	0.089	272.956072	-20.371006	-2186.18	-1677.65
4	GUIDE	822088144	9.00	9829	-0.125	0.128	0.098	0.153	272.849323	-19.208046	1991.14	-1226.47
5	GUIDE	822102416	7.50	9833	0.124	-0.166	0.057	0.093	272.173216	-20.087156	-1226.74	989.50
6	GUIDE	820401112	7.88	9830	-0.351	-0.484	0.080	0.123	271.884761	-19.293988	1600.86	2042.93
7	GUIDE	822096760	8.06	9829	0.006	0.138	0.060	0.098	272.830526	-19.438690	1160.13	-1180.42

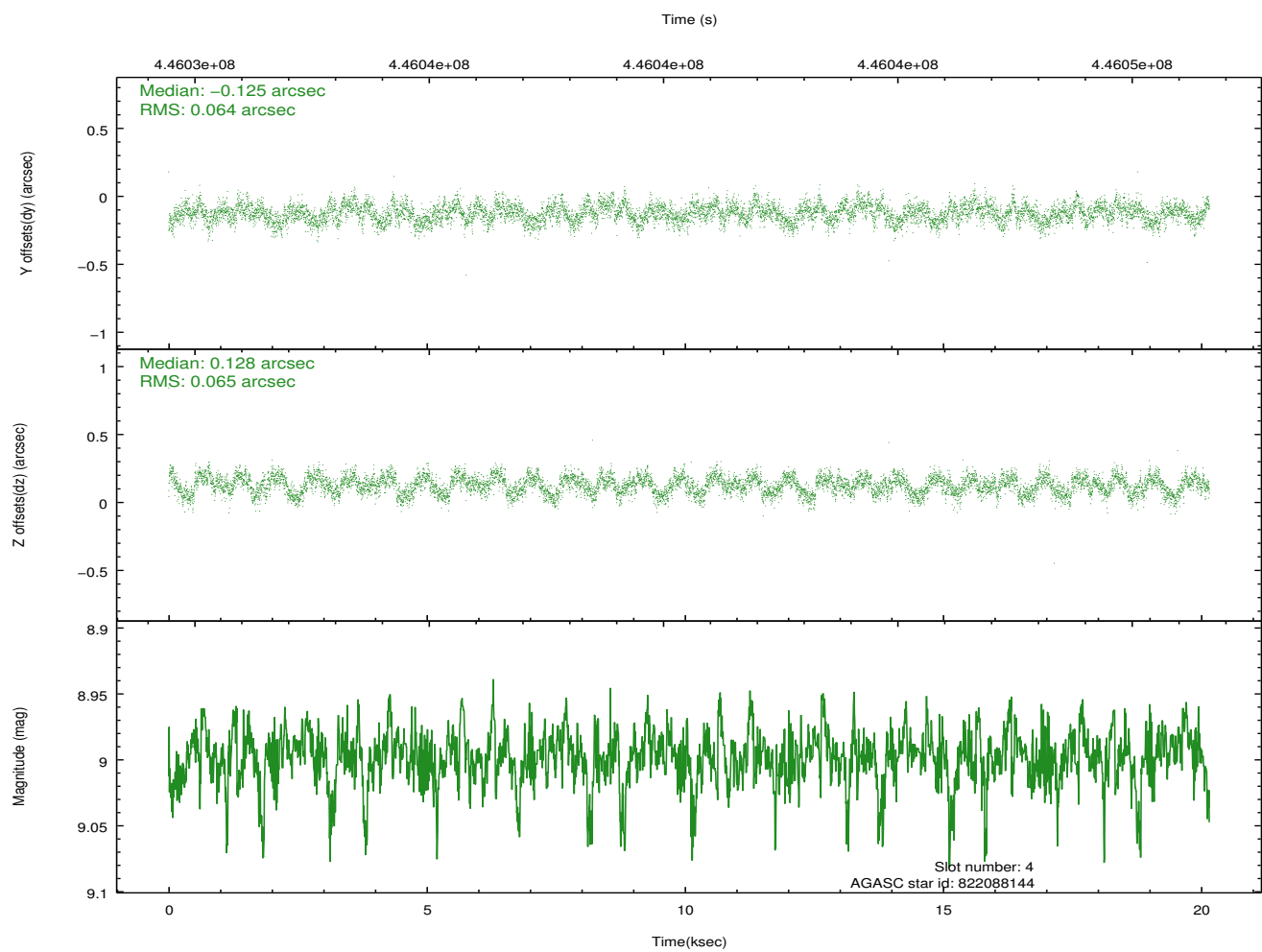
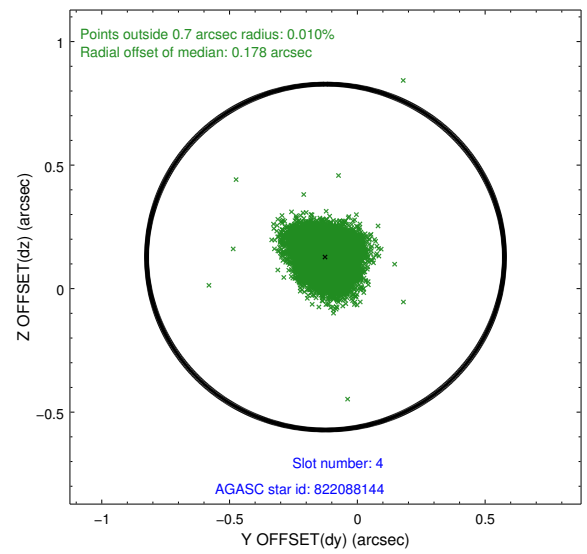
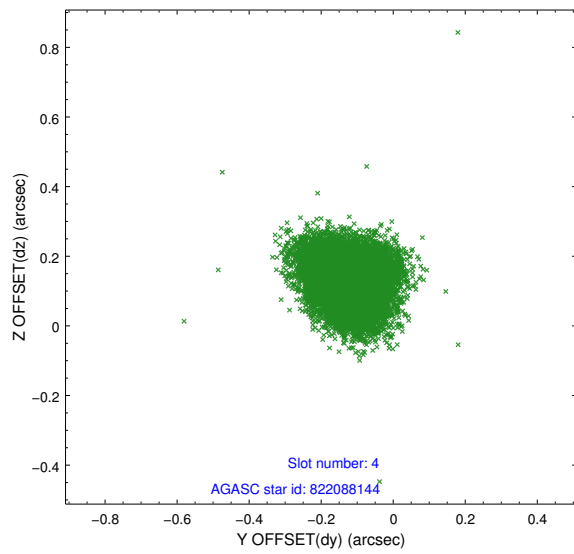
∞

2.4 Star Slots

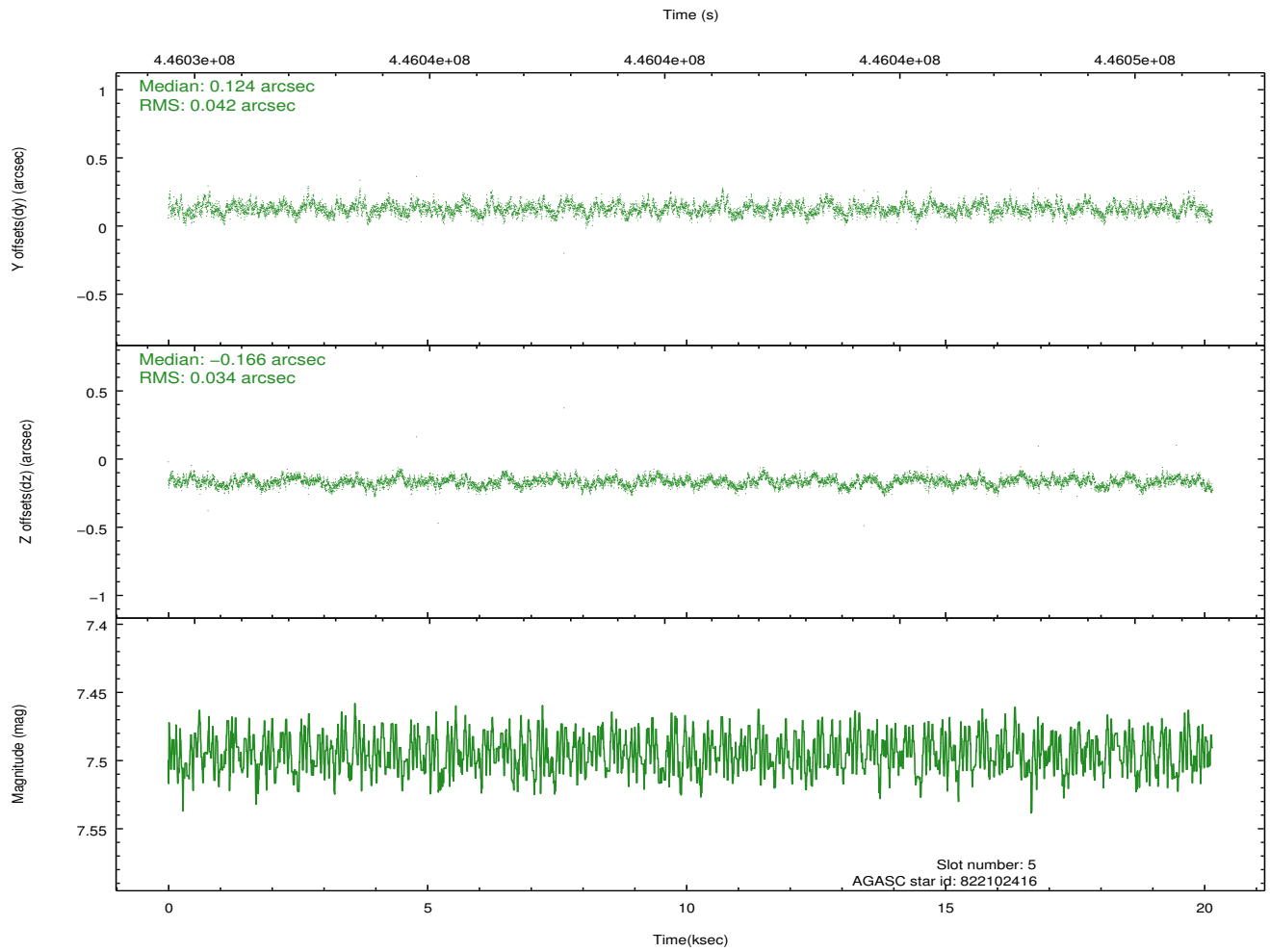
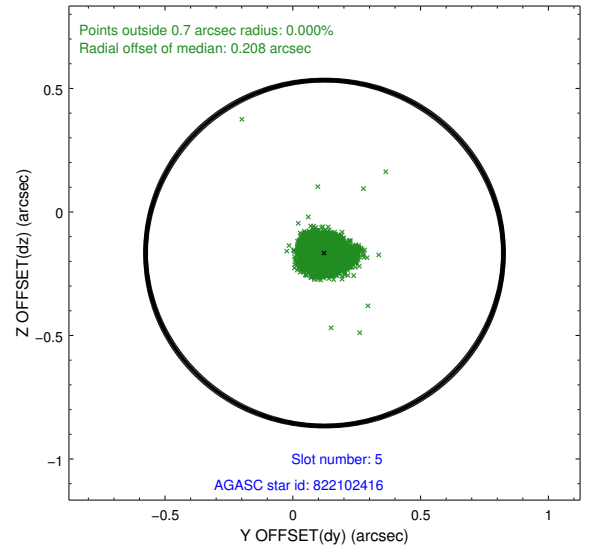
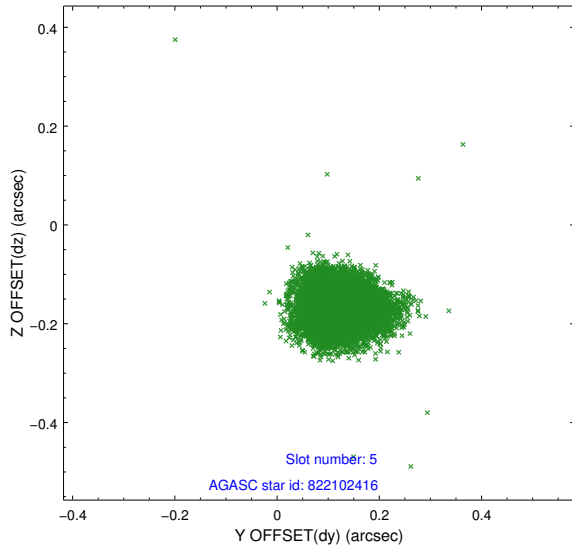
2.4.1 Slot 3



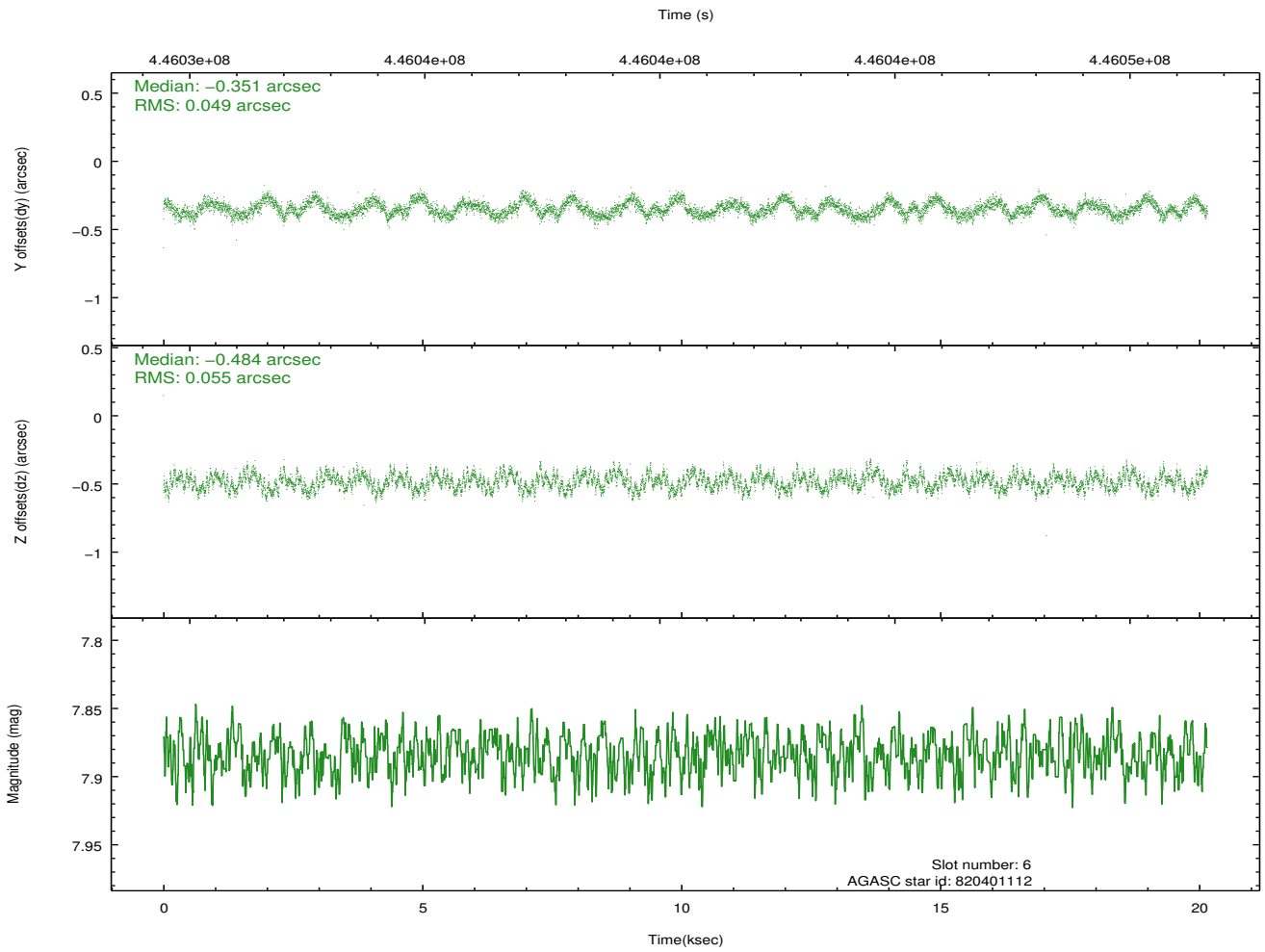
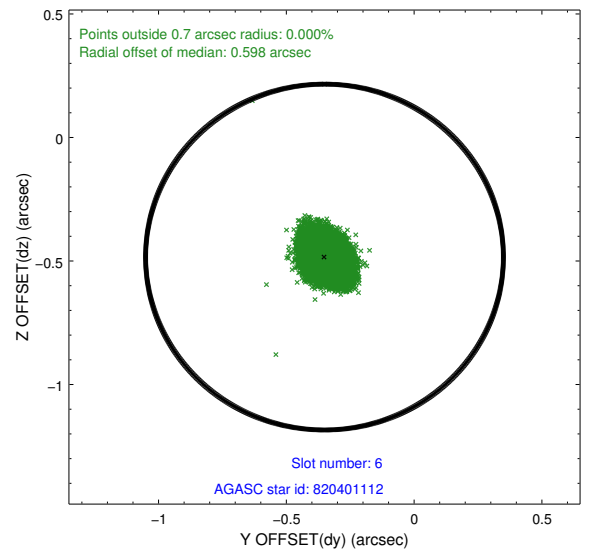
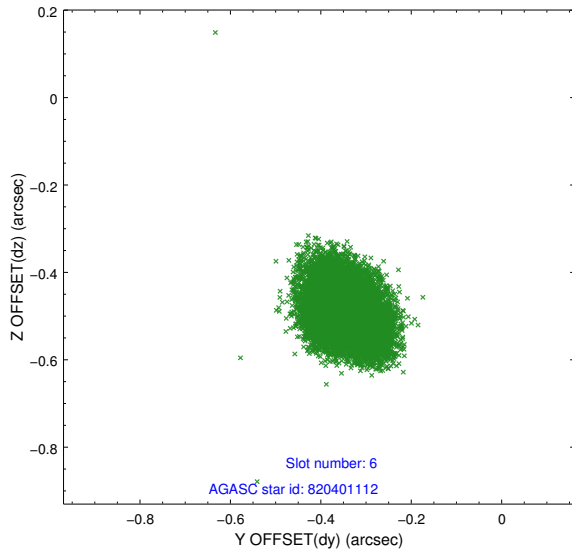
2.4.2 Slot 4



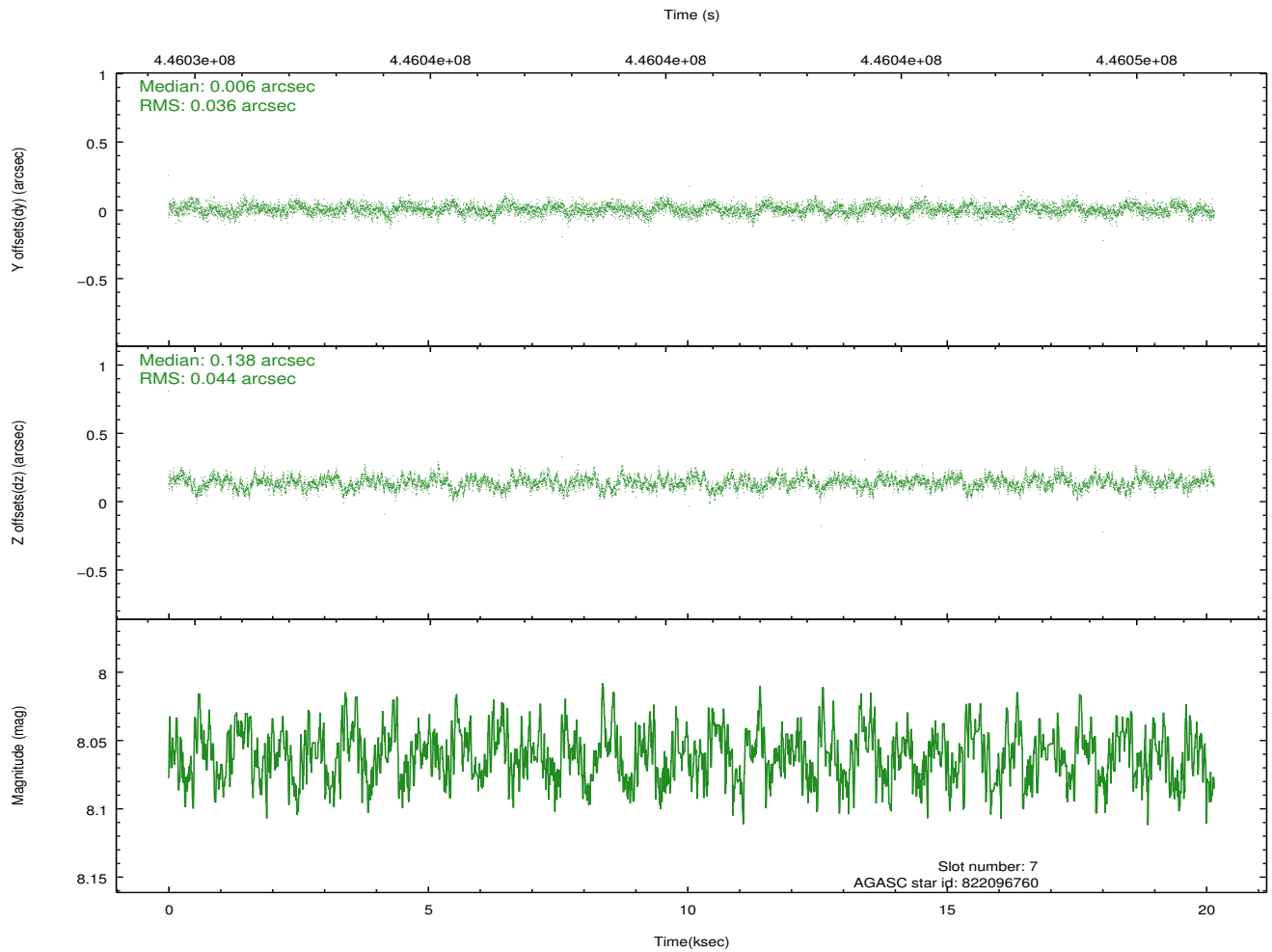
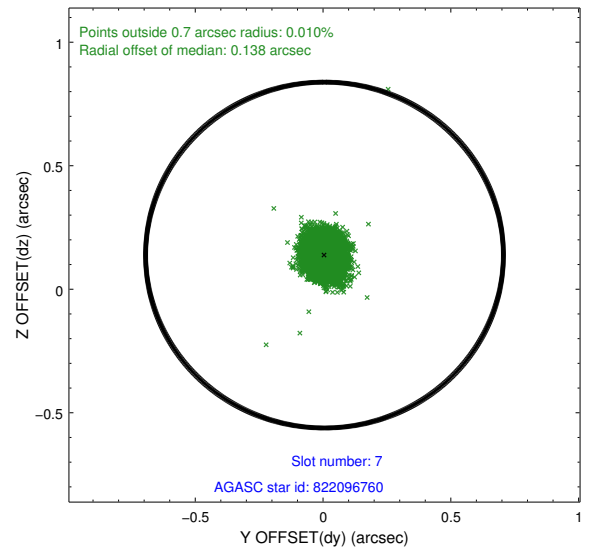
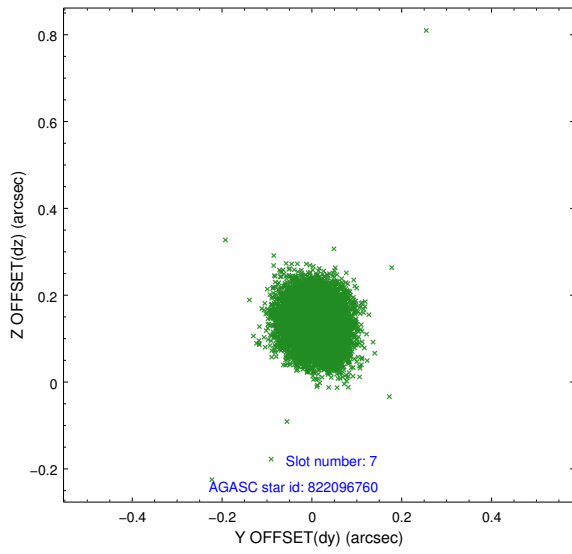
2.4.3 Slot 5



2.4.4 Slot 6

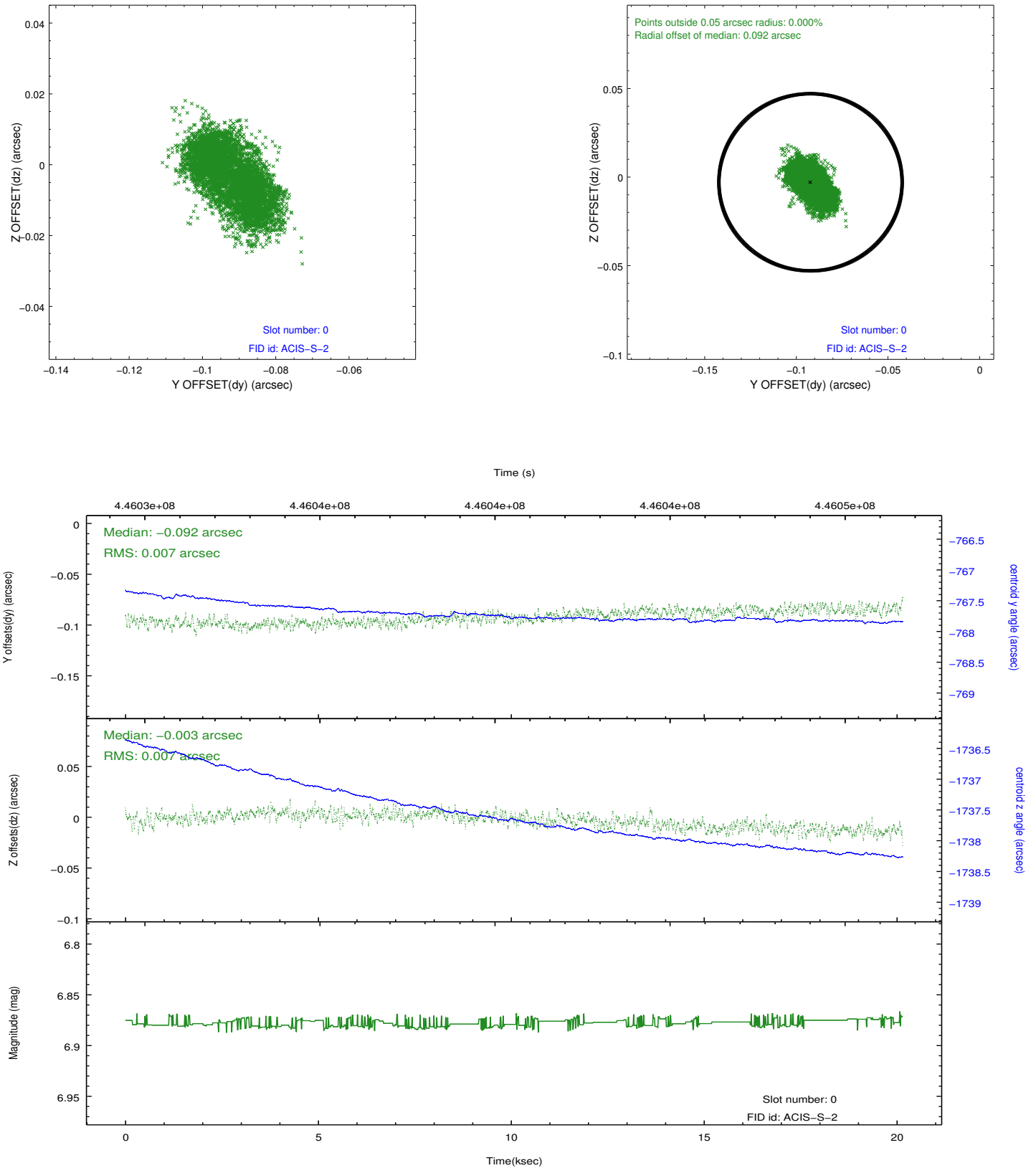


2.4.5 Slot 7

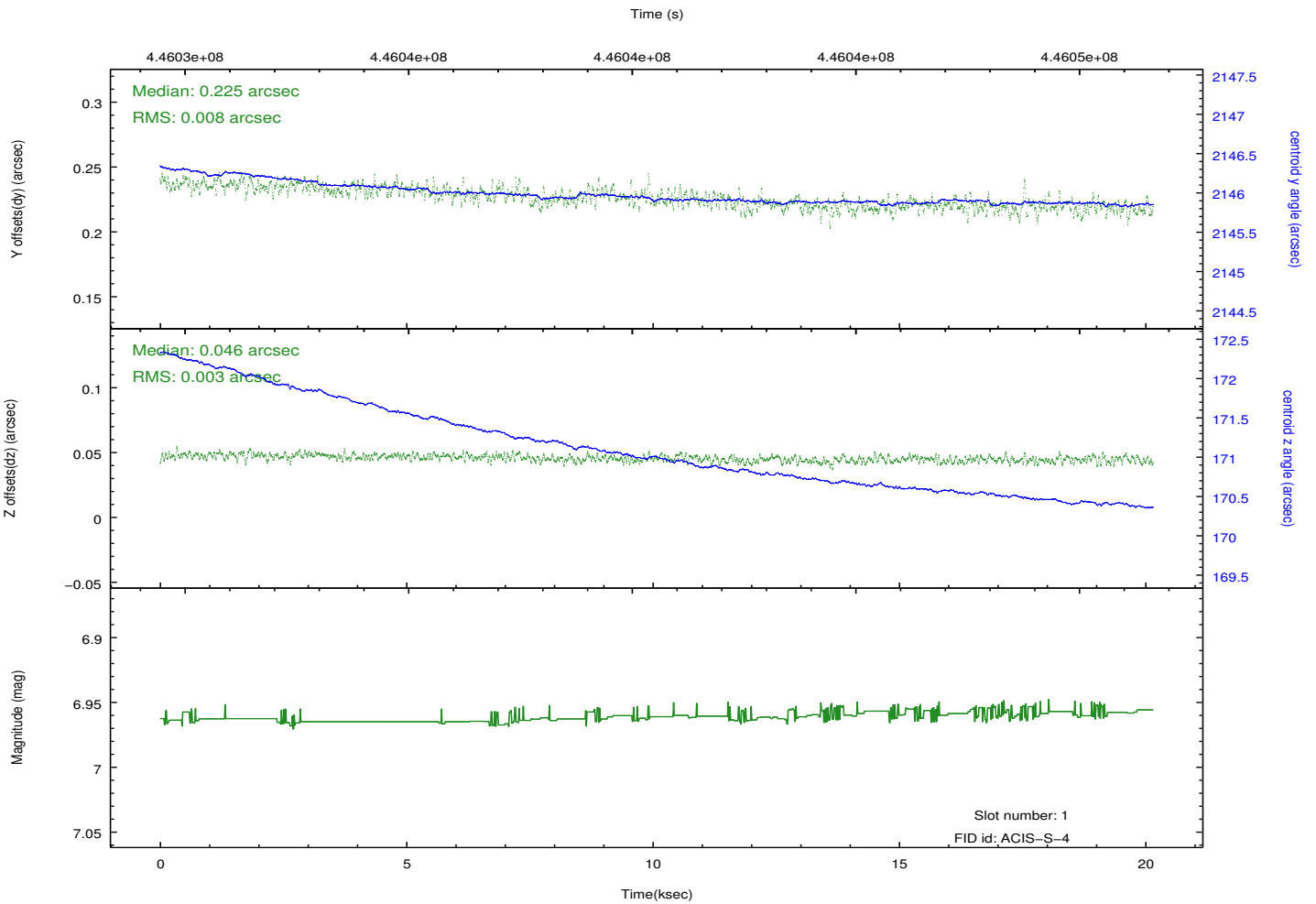
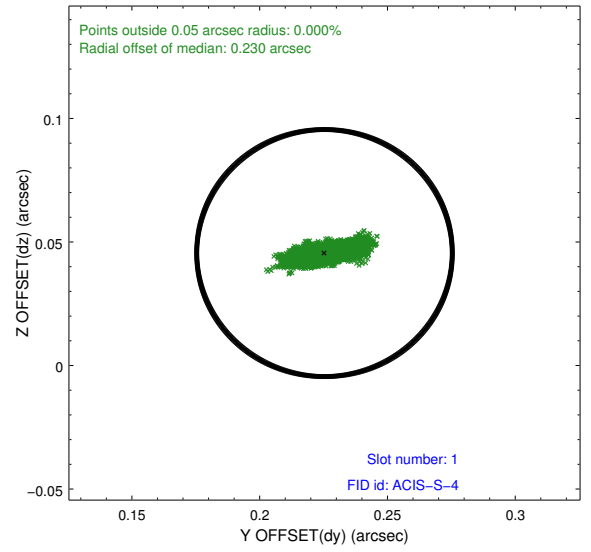
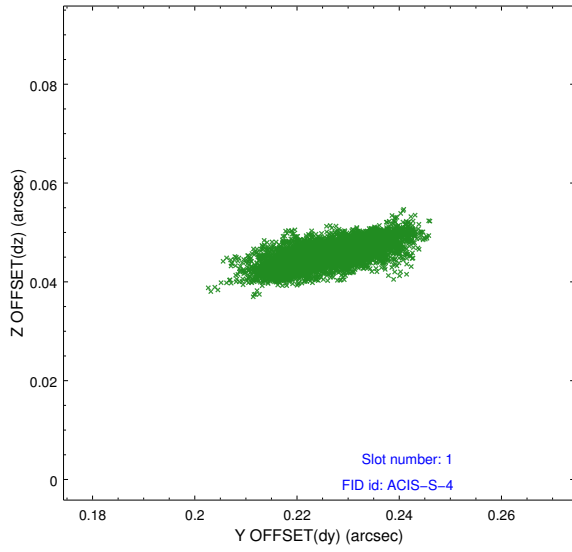


2.5 FID Slots

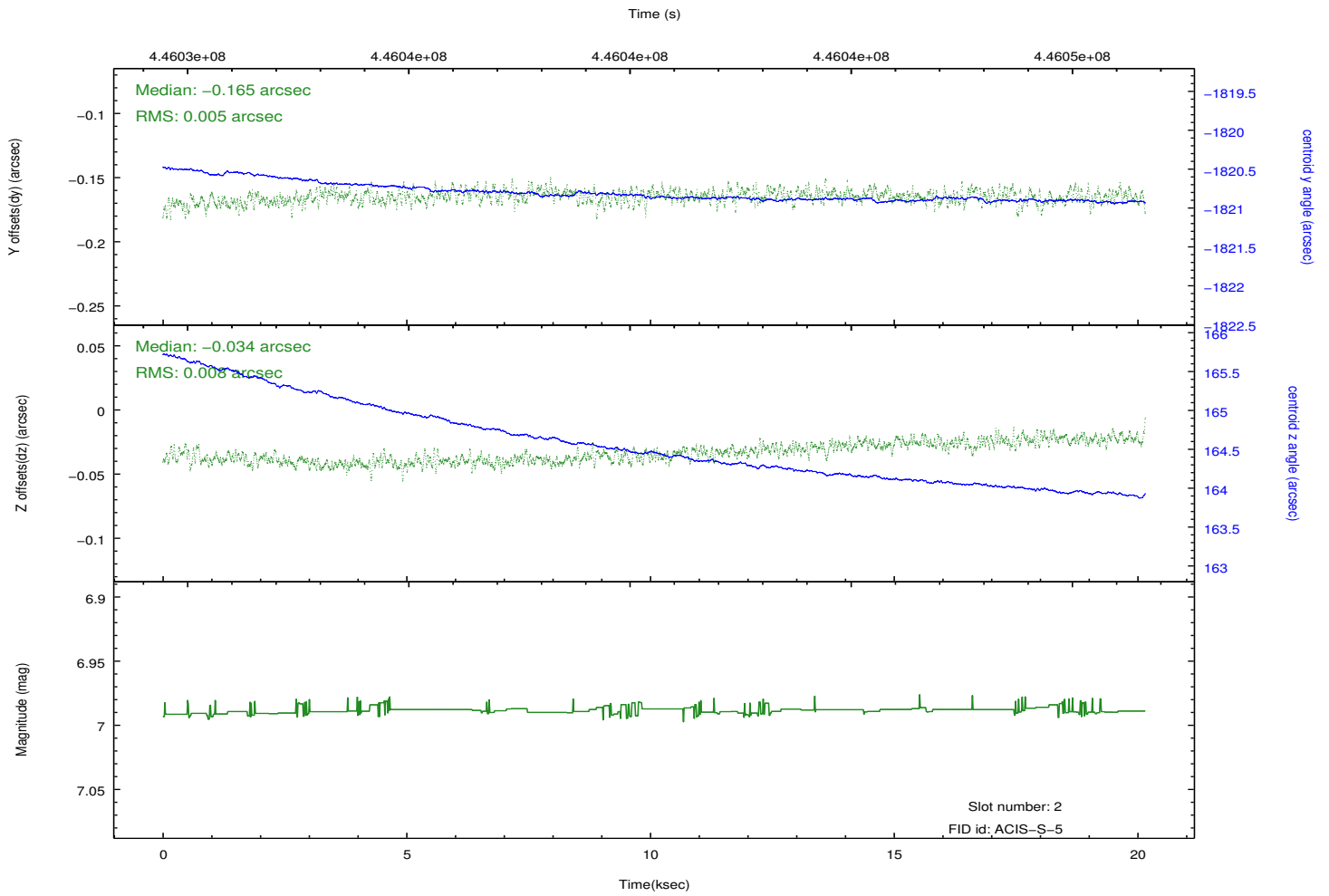
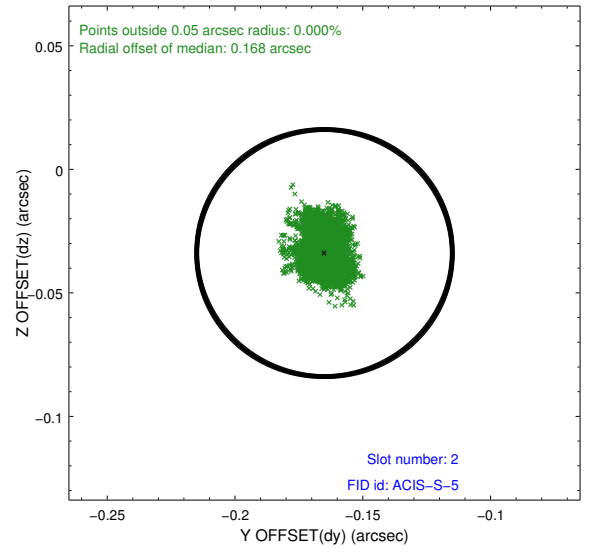
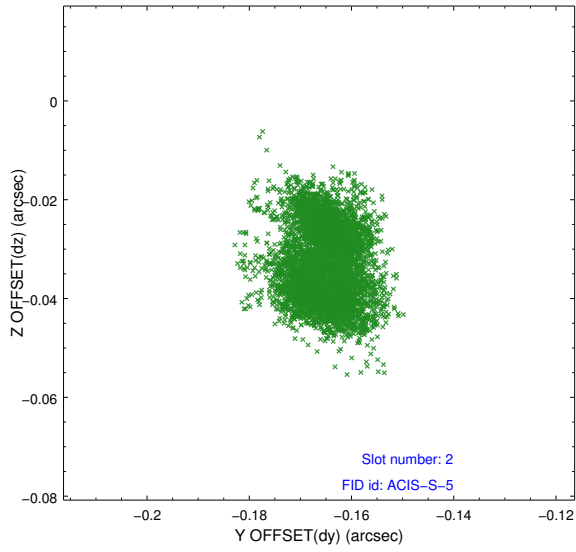
2.5.1 Slot 0



2.5.2 Slot 1



2.5.3 Slot 2



A Summary

A.1 Status

V&V Scientist	Jen Lauer
V&V Date (YYYY-MM-DD)	2012.02.21
V&V Edition	1
V&V Disposition and Status	OK
V&V Charge Time	20.069998803735

A.2 Comments

Window constraint met.