

V&V Reference Report

L2 ASCDS Version : 8.4.5

Observation 13826 - L2 Version 1
Chandra X-Ray Center

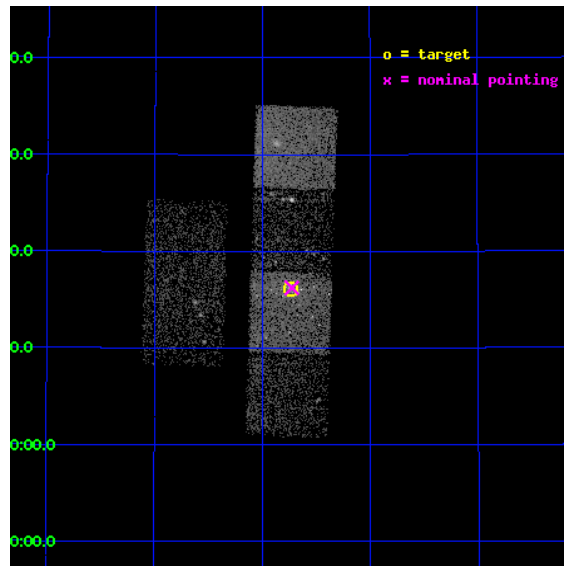
L2 Processing Date : Jun 7 2012

Contents

1	Front	2
2	OBI Primary	3
2.1	OBI	3
2.1.1	Images	3
2.1.2	Bias	3
2.1.3	Parameters	4
2.1.4	Events	4
2.2	Compared Parameters	5
2.3	Aspect	6
2.4	Star Slots	9
2.4.1	Slot 3	9
2.4.2	Slot 4	10
2.4.3	Slot 5	11
2.4.4	Slot 6	12
2.4.5	Slot 7	13
2.5	FID Slots	14
2.5.1	Slot 0	14
2.5.2	Slot 1	15
2.5.3	Slot 2	16
3	OBI Secondary	17
3.1	OBI	17
3.1.1	Images	17
3.1.2	Bias	17
3.1.3	Parameters	18
3.1.4	Events	18
A	Summary	19
A.1	Status	19
A.2	Comments	19

1 Front

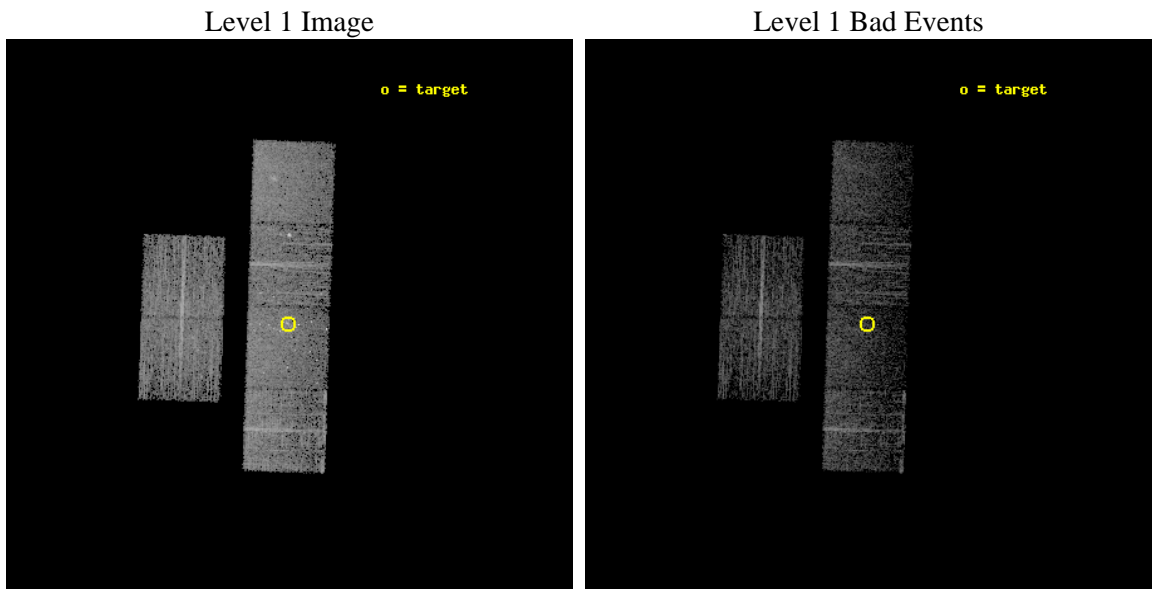
seq_num	601000	Sequence number
obs_id	13826	Observation id
title	M31*: A Resolved Low-Luminosity Accretion Flow Around a Murmuring Monster	Proposal title
observer	Dr. Michael Garcia	Principal investigator
object	M31*	Source name
dtcycle	0	
cycle	P	events are from which exps? P[primary] S[econdar
ra_targ	10.685	Observer's specified target RA [deg]
dec_targ	41.268972	Observer's specified target Dec [deg]
ra_nom	10.681546730093	Nominal RA [deg]
dec_nom	41.270509075956	Nominal Dec [deg]
roll_nom	91.903785865787	Nominal Roll [deg]
revision	1	Processing version of data
ontime	8728.1869049668	Sum of GTIs [s]
livetime	1374.0271564429	Livetime [s]
ontime2	8728.1869248748	Sum of GTIs [s]
ontime3	8728.1869049668	Sum of GTIs [s]
ontime5	8728.1869049668	Sum of GTIs [s]
ontime6	8728.1869049668	Sum of GTIs [s]
ontime7	8728.1869049668	Sum of GTIs [s]
ontime8	8728.1869049668	Sum of GTIs [s]
l2events	30108	Number of level 2 events



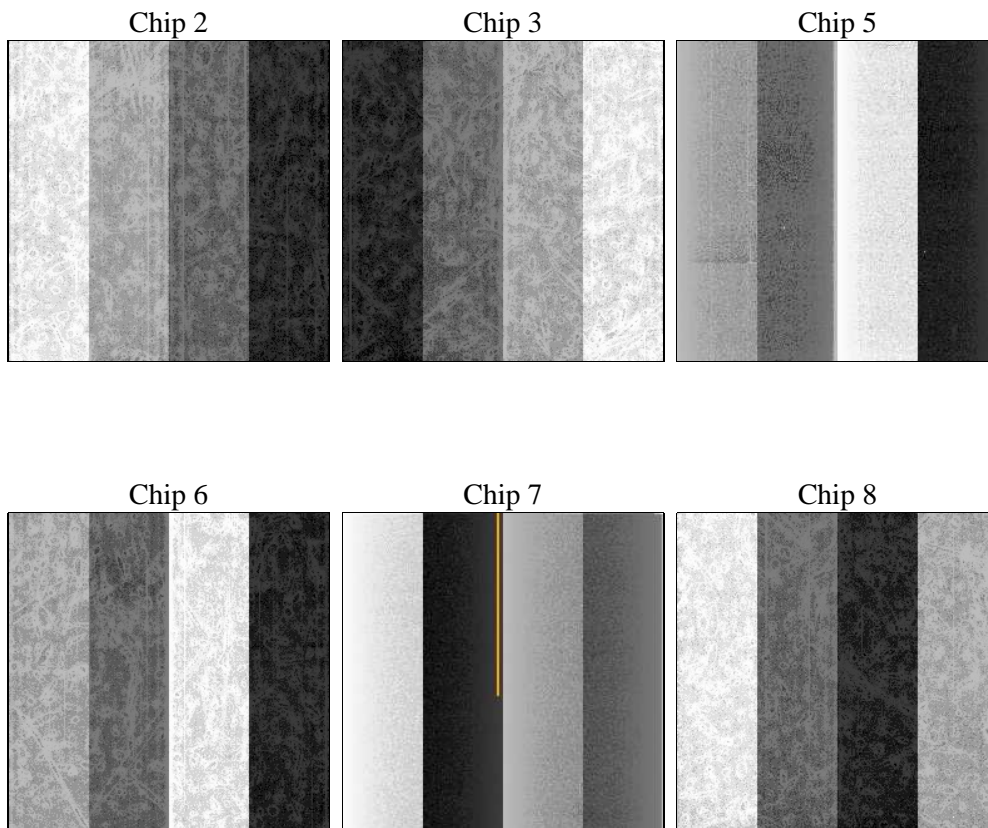
2 OBI Primary

2.1 OBI

2.1.1 Images



2.1.2 Bias



2.1.3 Parameters

obi_num	0	Obi number	sched_exp_time	46000.000000	[s] Scheduled observation exposure time
ascdsver	8.4.5	Processing system revision	ontime	8728.1869049668	Sum of GTIs [s]
caldbver	4.4.10	 	ontime2	8728.1869248748	Sum of GTIs [s]
date	2012-06-07T18:02:09	Date and time of file creation	ontime3	8728.1869049668	Sum of GTIs [s]
revision	1	Processing version of data	ontime5	8728.1869049668	Sum of GTIs [s]
			ontime6	8728.1869049668	Sum of GTIs [s]
			ontime7	8728.1869049668	Sum of GTIs [s]
			ontime8	8728.1869049668	Sum of GTIs [s]
			l1events	160447	Number of level 1 events

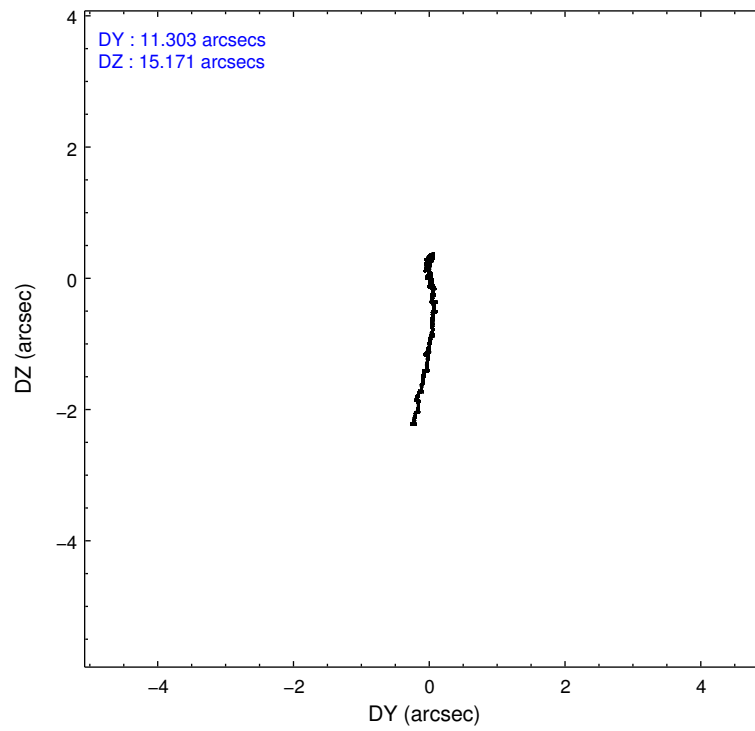
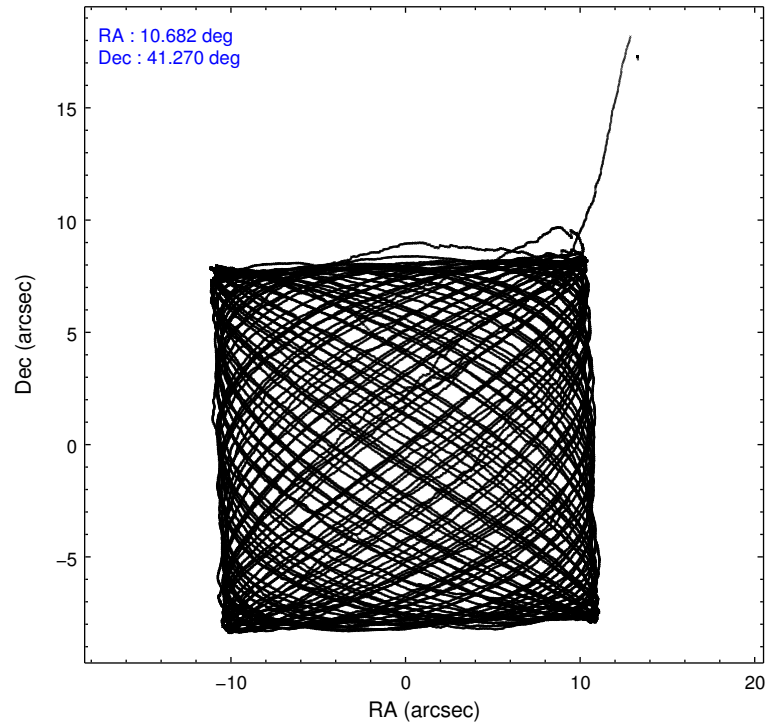
2.1.4 Events

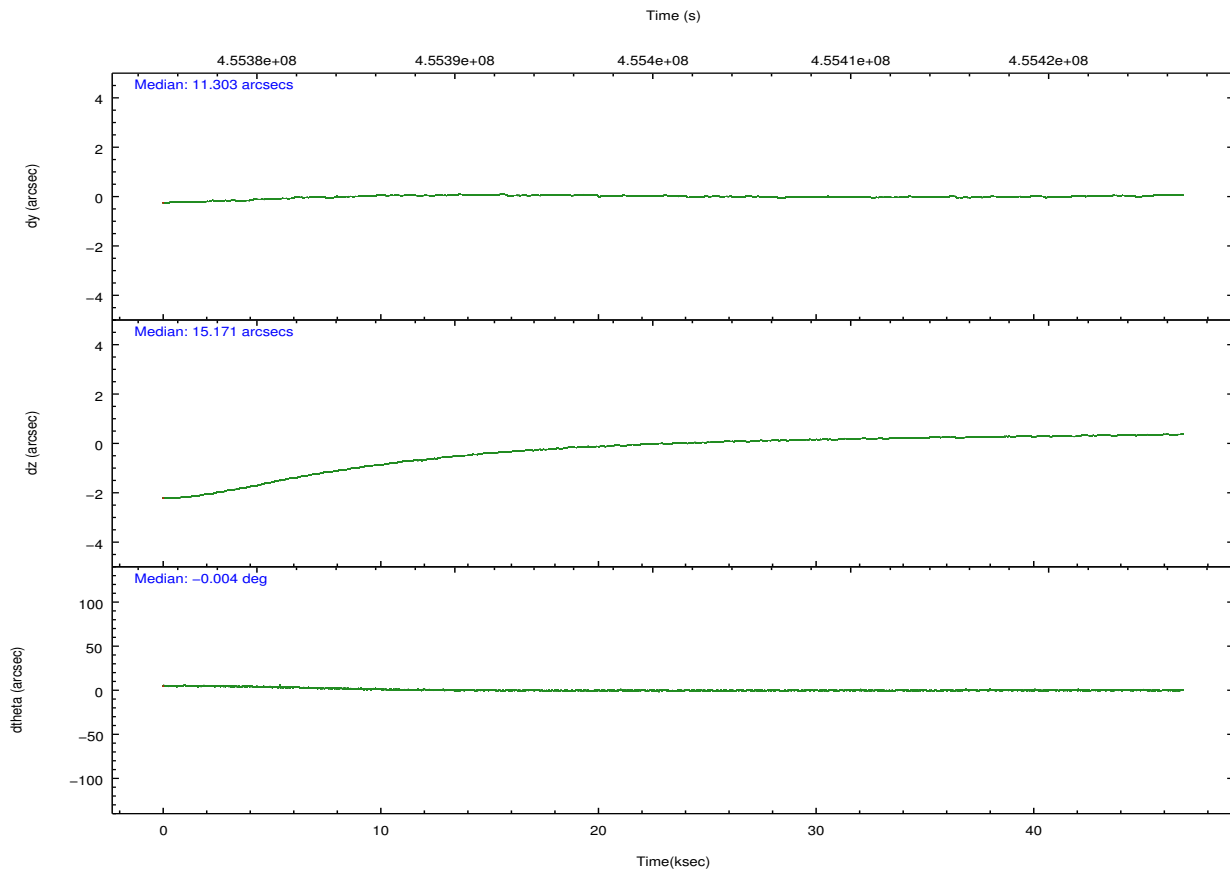
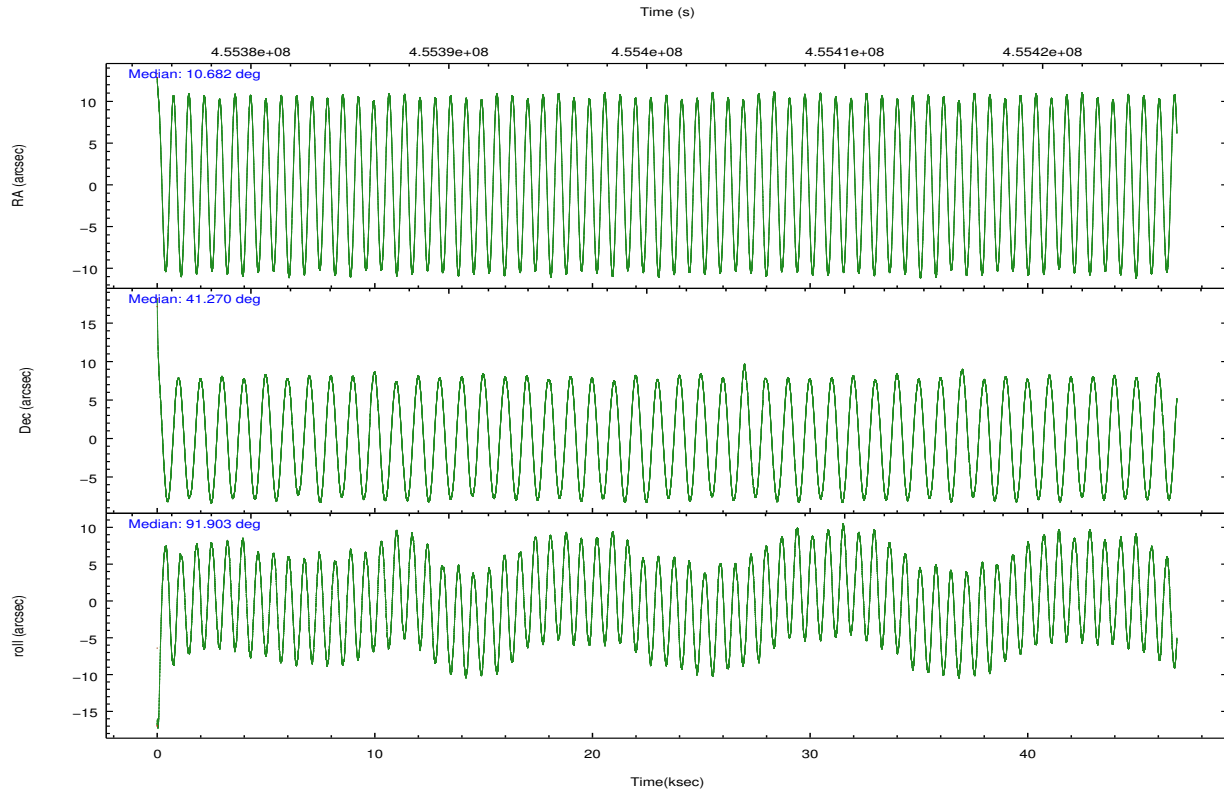
	ccd 2	ccd 3	ccd 5	ccd 6	ccd 7	ccd 8		ccd 2	ccd 3	ccd 5	ccd 6	ccd 7	ccd 8
level 1 events	25113	24484	27863	24979	28520	29488	grade 0 events	583	603	759	1616	1947	1407
rejected events	22995	22428	17138	21546	17051	24109		2%	2%	2%	6%	6%	4%
rejected %	91%	91%	61%	86%	59%	81%	grade 1 events	11	11	32	13	32	20
								0%	0%	0%	0%	0%	0%
							grade 2 events	551	520	3098	669	2811	1312
								2%	2%	11%	2%	9%	4%
							grade 3 events	289	253	480	313	1145	572
								1%	1%	1%	1%	4%	1%
							grade 4 events	261	230	471	277	1103	532
								1%	0%	1%	1%	3%	1%
							grade 5 events	922	956	2220	1022	2226	1390
								3%	3%	7%	4%	7%	4%
							grade 6 events	435	451	5922	559	4473	1562
								1%	1%	21%	2%	15%	5%
							grade 7 events	22061	21460	14881	20510	14783	22693
								87%	87%	53%	82%	51%	76%

2.2 Compared Parameters

Parameter	Planned	Actual	Parameter	Planned	Actual
Instrument	ACIS	ACIS	Obspar format version number	7	7
Detector	ACIS-235678	ACIS-235678	Obspar file type	PREDICTED	ACTUAL
Grating	NONE	NONE	Obspar update status	NONE	UPDATED
Data mode	FAINT	FAINT	CCD I0 on	N	N
Observation mode	POINTING	POINTING	CCD I1 on	N	N
[deg] Pointing RA	10.701170	10.68154673009309	CCD I2 on	Y	Y
[deg] Pointing Dec	41.247505	41.27050907595604	CCD I3 on	Y	Y
[deg] Pointing Roll	91.734221	91.90378586578666	CCD S0 on	N	N
[mm] SIM focus pos	-0.684267	-0.6828225247311905	CCD S1 on	O2	Y
[mm] SIM defocus	0	0.001444936568705701	CCD S2 on	Y	Y
[mm] SIM translation stage pos	-190.132523	-190.1400660498719	CCD S3 on	Y	Y
[mm] SIM translation stage offset	0	0.00754346686406393	CCD S4 on	O1	Y
[s] Observation start time (MET)	455378455.184000	455376523.2638	CCD S5 on	N	N
Observation start date	2012-06-06T13:59:49	2012-06-06T13:28:43	Number of optional ACIS chips dropped	0	0
[s] Observation end time (MET)	455424455.184000	455425358.36639	On-chip summing requested	N	N
Observation end date	2012-06-07T02:46:29	2012-06-07T03:02:38	Subarray requested	NONE	NONE
Read mode	TIMED	TIMED	Alternating exposures requested	Y	Y
			[s] Primary exposure time	0.600000	0.6
			[s] Secondary exposure time	0.000000	3.2
			Duty cycle	5	5

2.3 Aspect



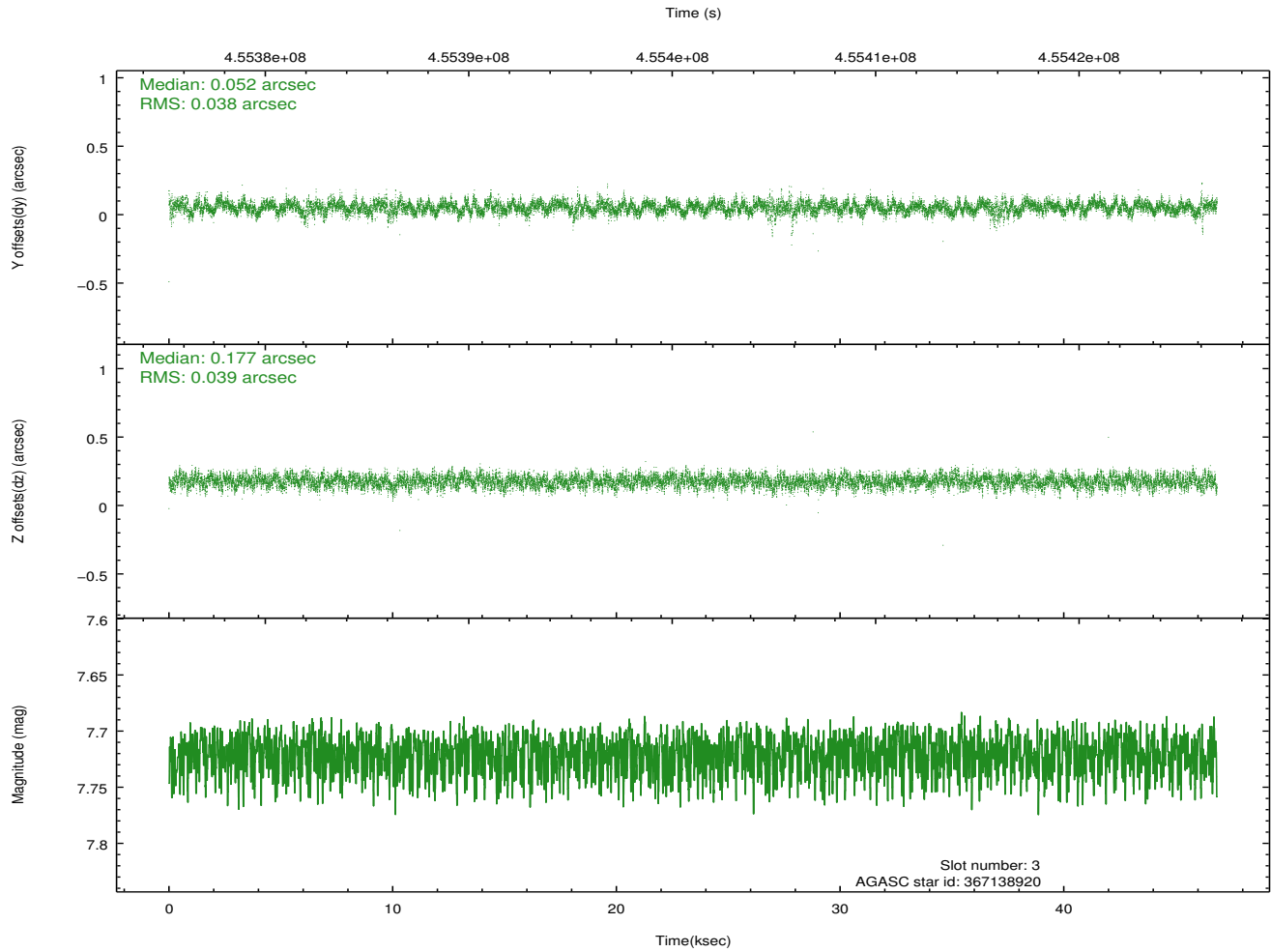
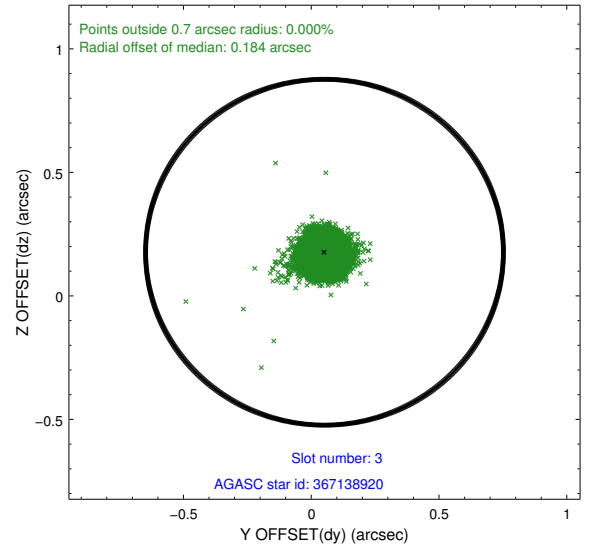
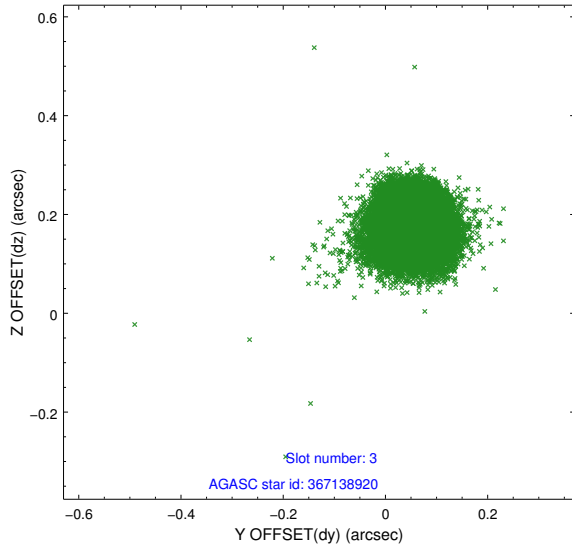


Slot Statistics

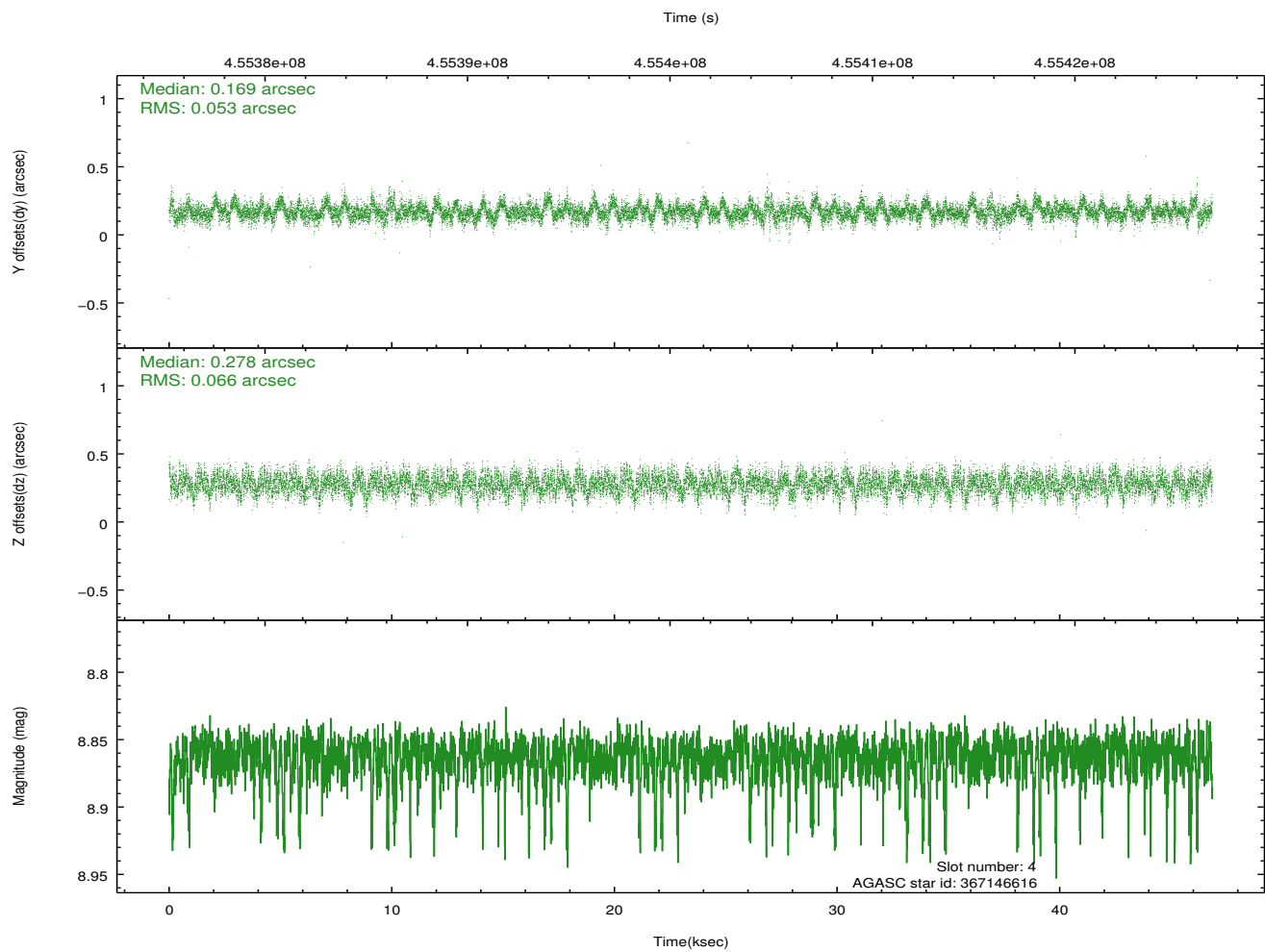
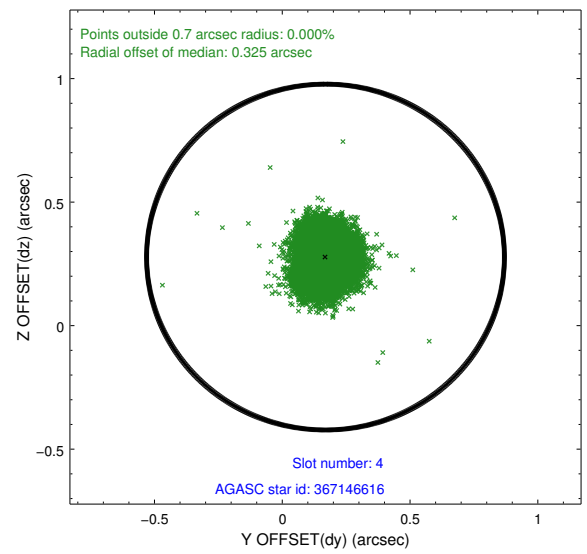
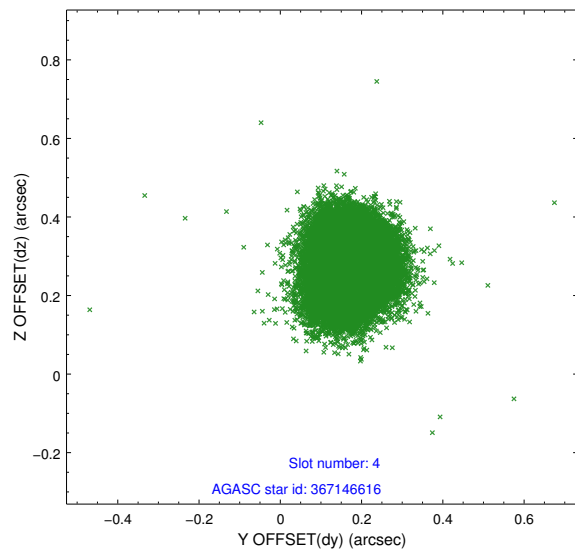
slot	status	id	mag	n_pts	med_dy	med_dz	dr1	dr2	ra	dec	mean_y	mean_z
0	FID	ACIS-S-2	6.89	11429	-0.074	-0.025	0.015	0.034	0.000000	0.000000	-764.23	-1736.25
1	FID	ACIS-S-4	6.98	11429	0.196	0.043	0.009	0.017	0.000000	0.000000	2149.32	172.31
2	FID	ACIS-S-5	7.00	11428	-0.155	-0.010	0.013	0.033	0.000000	0.000000	-1817.17	165.92
3	GUIDE	367138920	7.72	22855	0.052	0.177	0.057	0.093	11.513485	40.808909	-1635.22	-2165.58
4	GUIDE	367146616	8.86	22832	0.169	0.278	0.089	0.144	11.418645	41.190163	-256.61	-1936.30
5	GUIDE	367148872	7.21	22852	0.004	-0.232	0.076	0.131	10.505940	40.688258	-1996.03	593.78
6	GUIDE	367663272	9.29	22840	-0.088	-0.346	0.107	0.175	10.656279	41.699429	1629.64	72.42
7	GUIDE	367674552	8.85	22758	-0.139	0.123	0.078	0.127	11.016238	41.570845	1139.58	-883.18

2.4 Star Slots

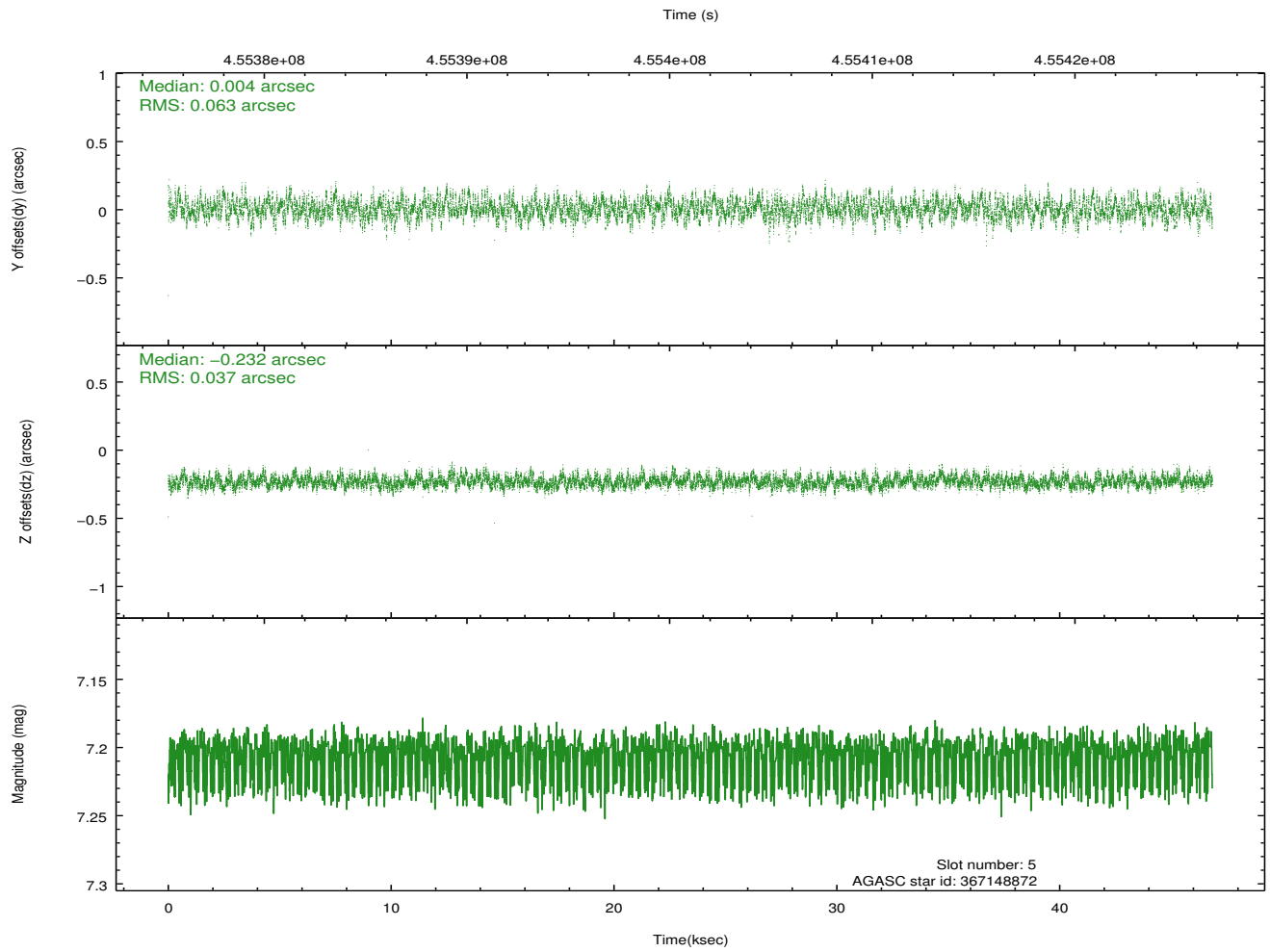
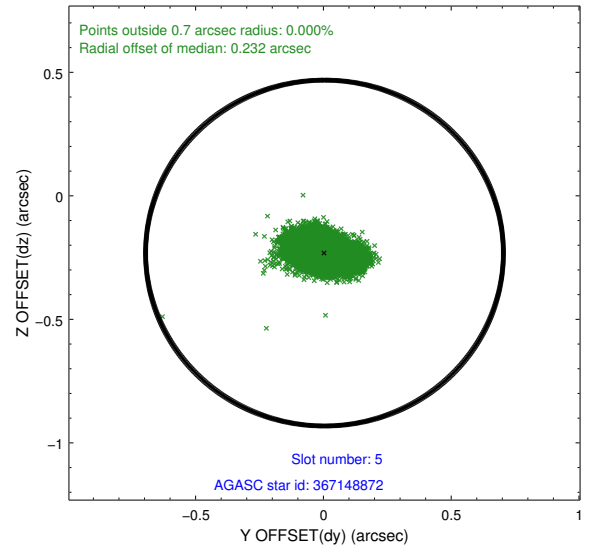
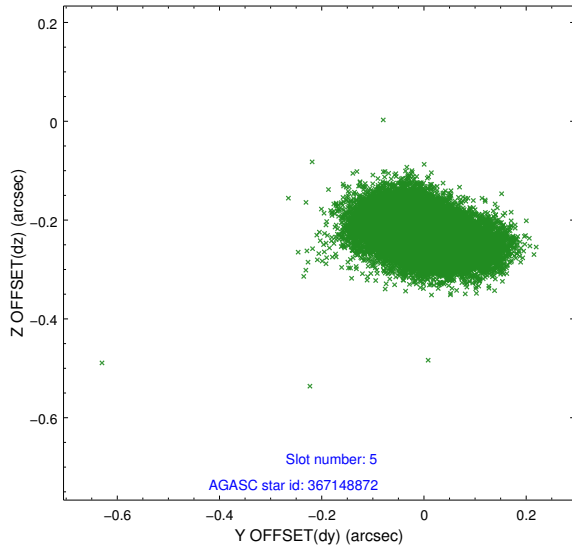
2.4.1 Slot 3



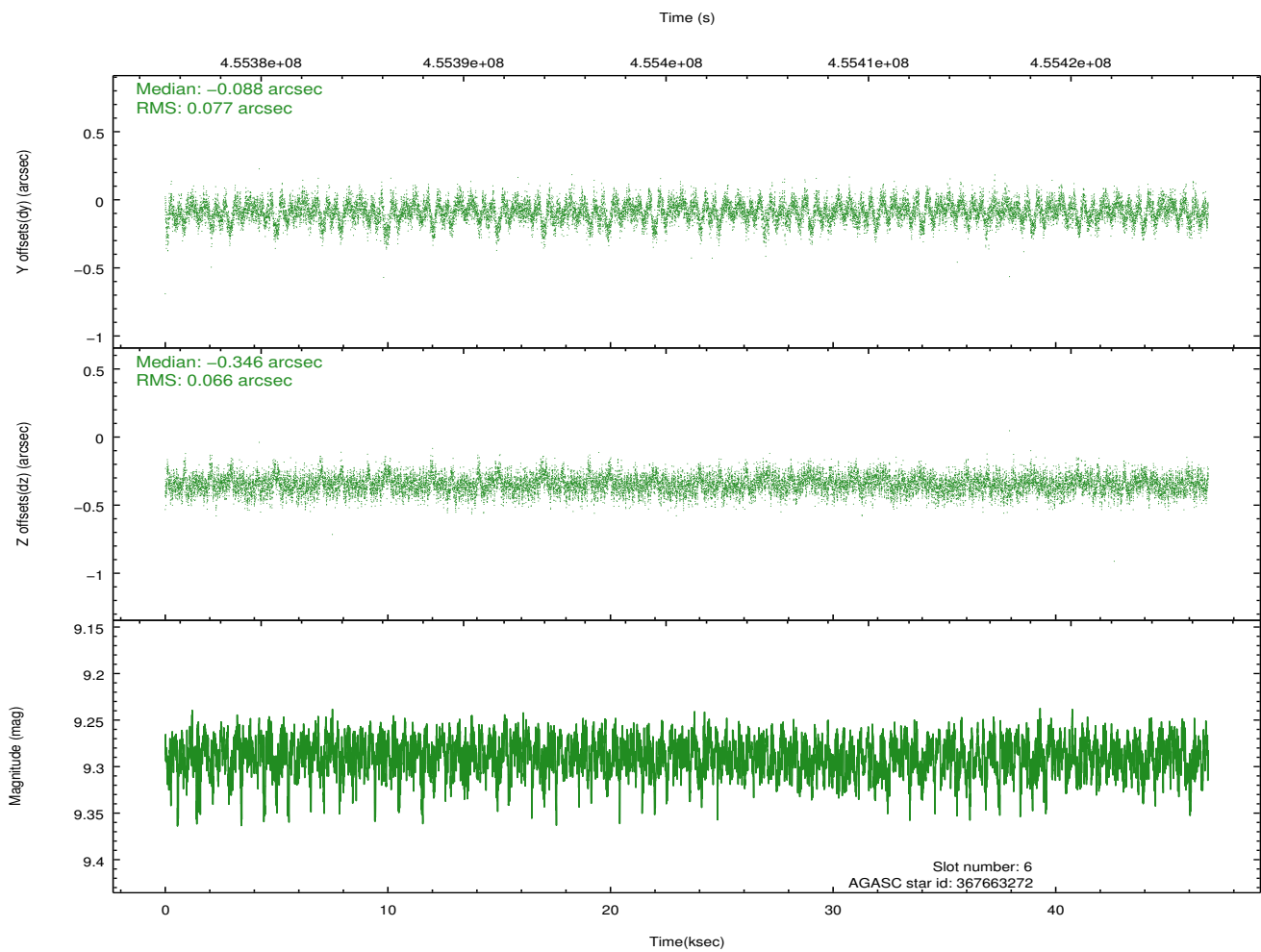
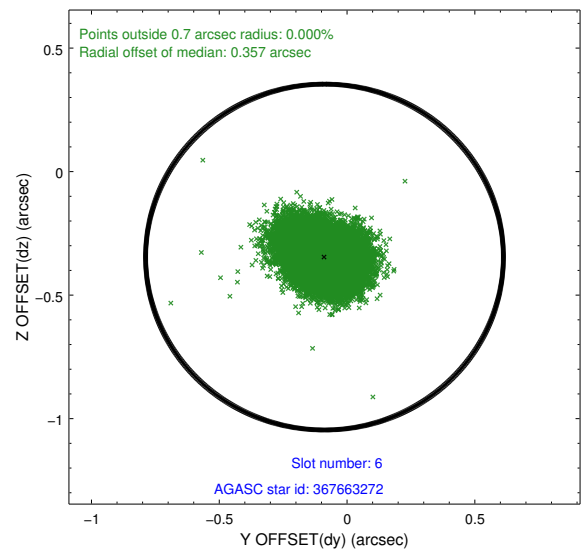
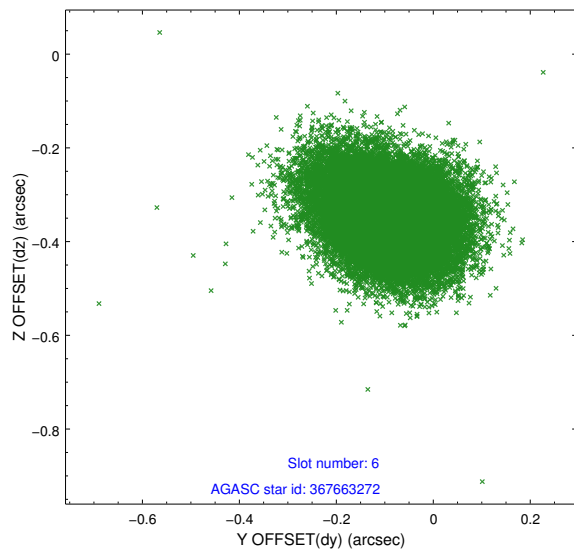
2.4.2 Slot 4



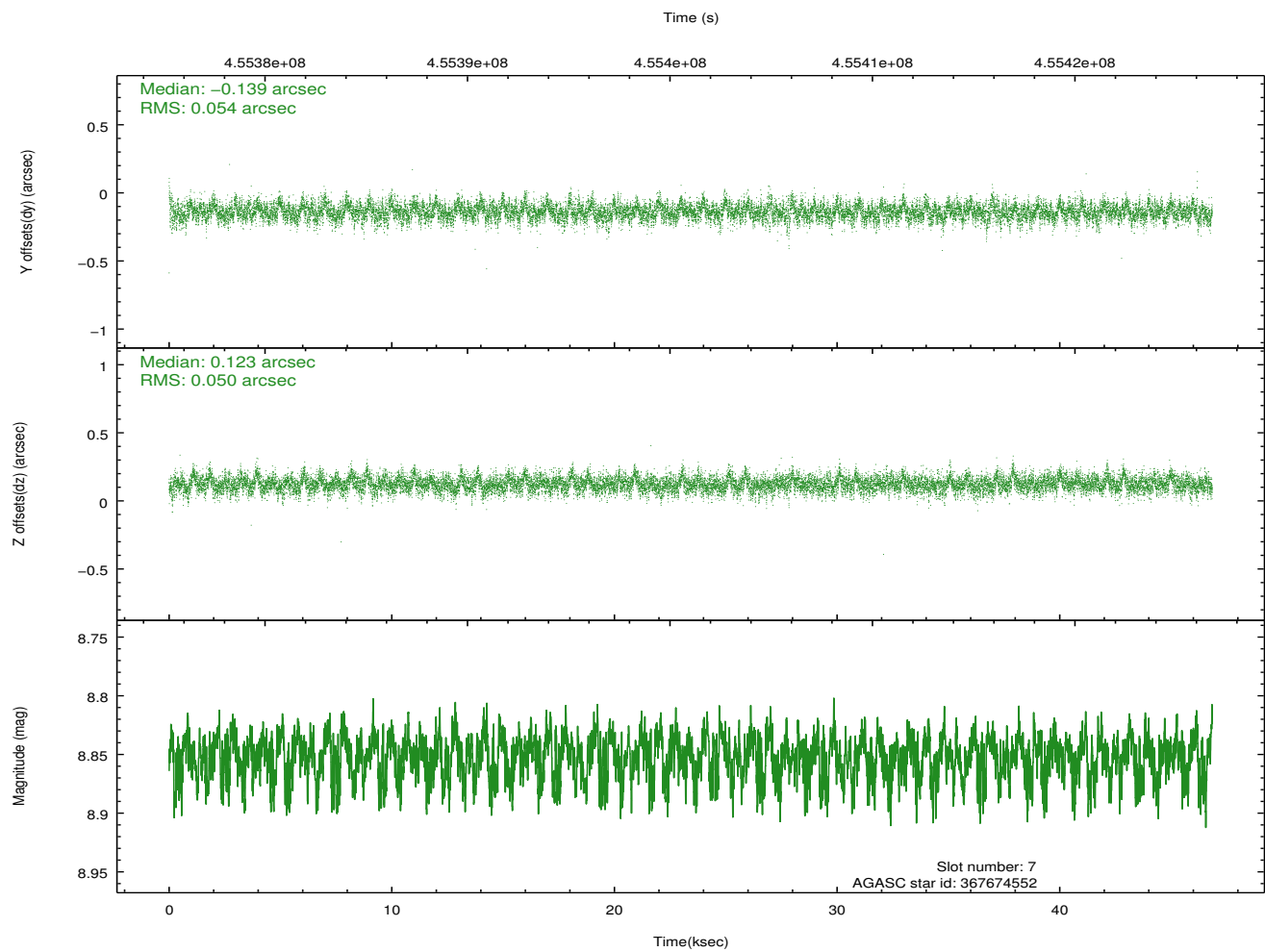
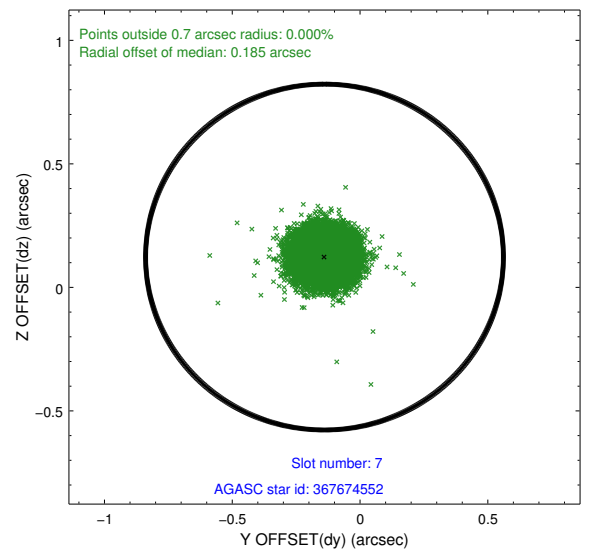
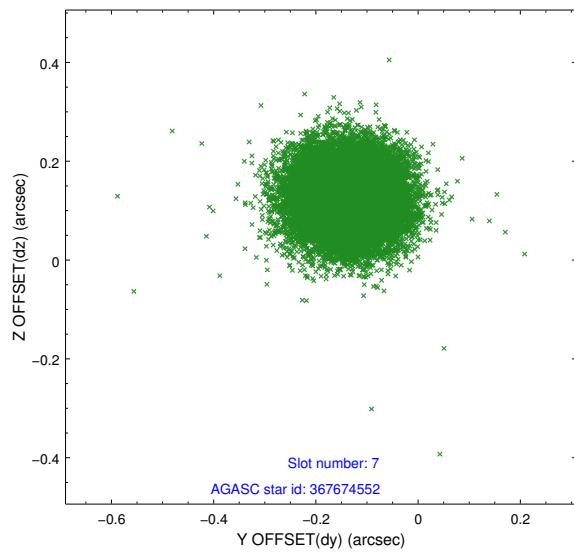
2.4.3 Slot 5



2.4.4 Slot 6

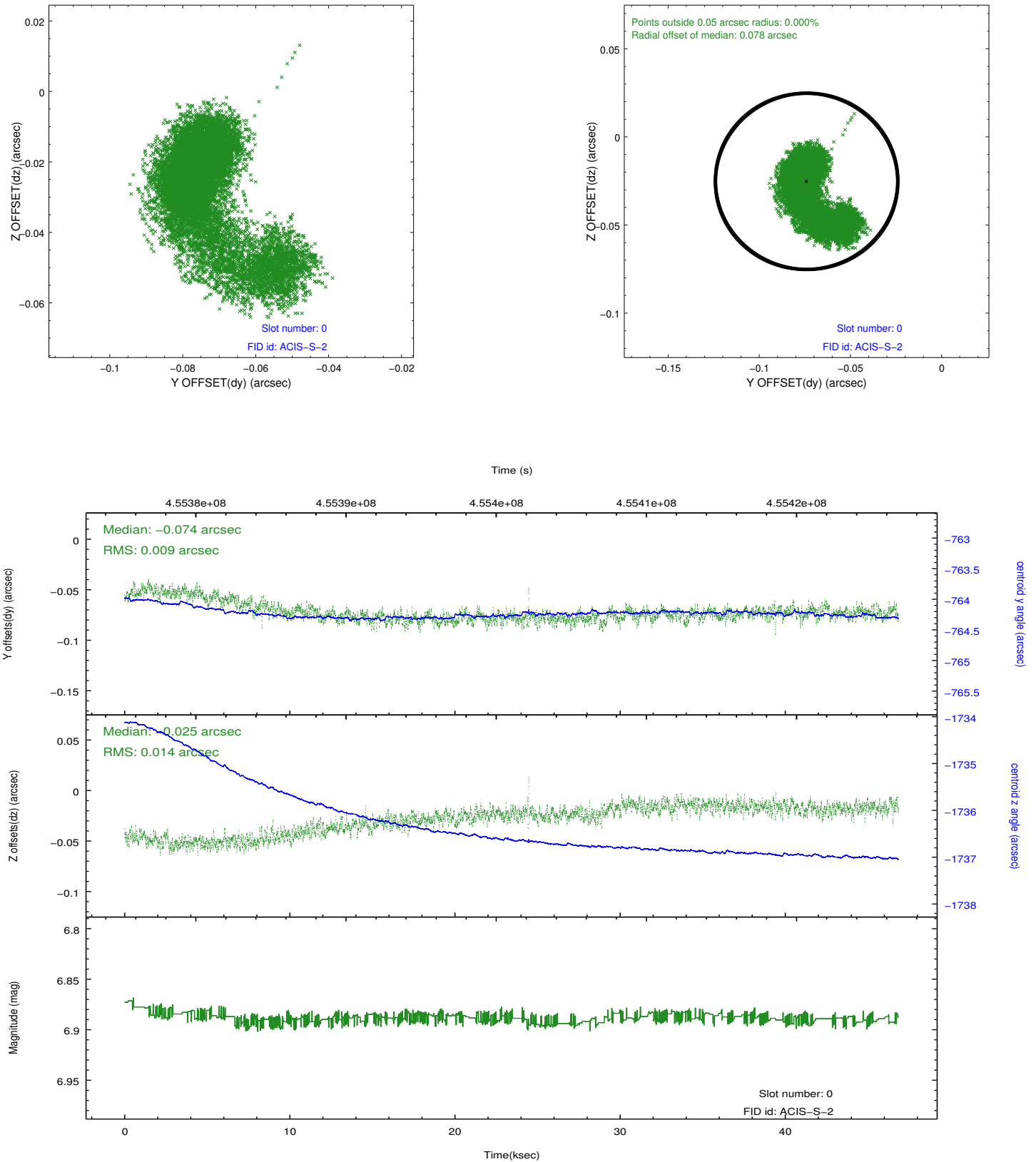


2.4.5 Slot 7

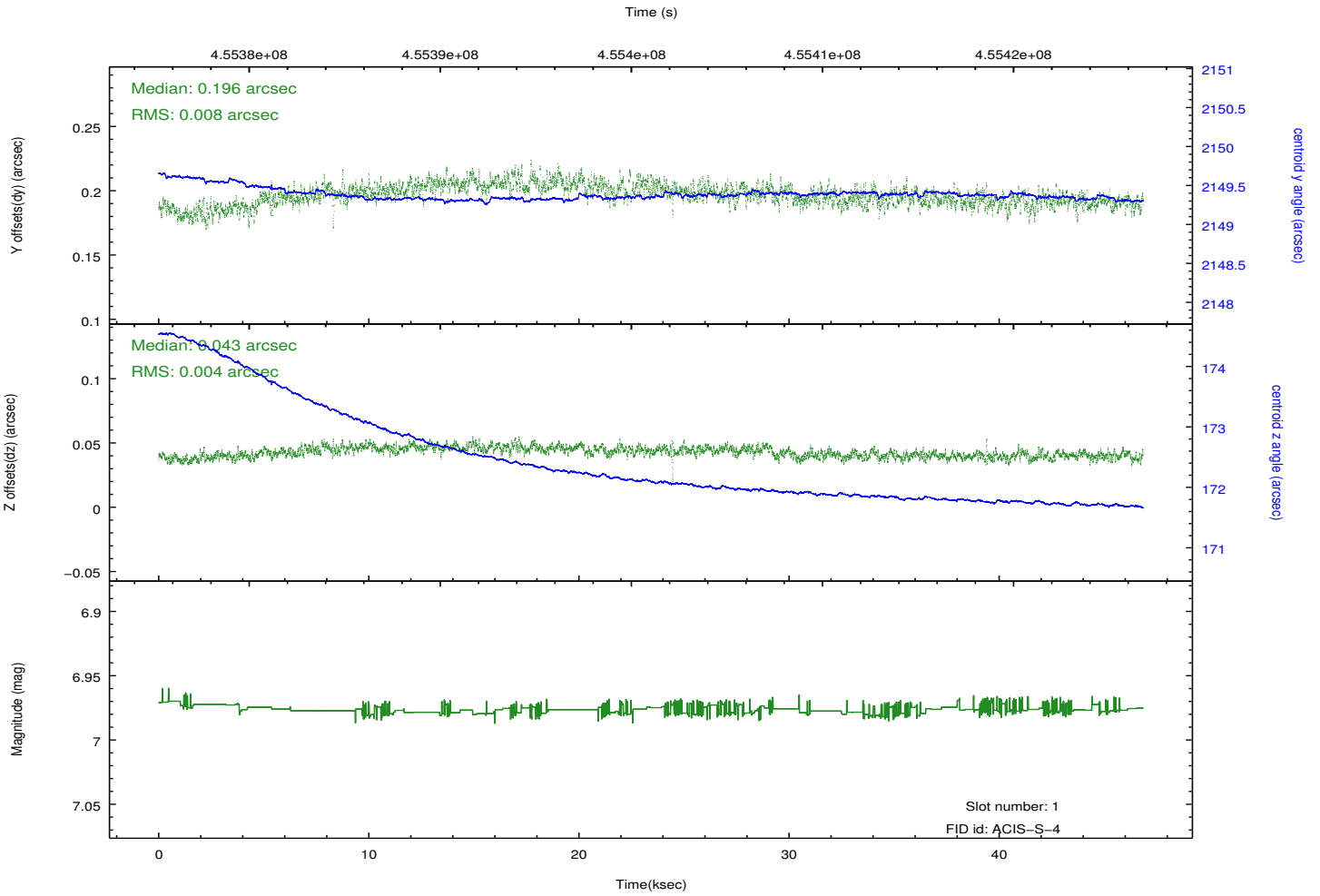
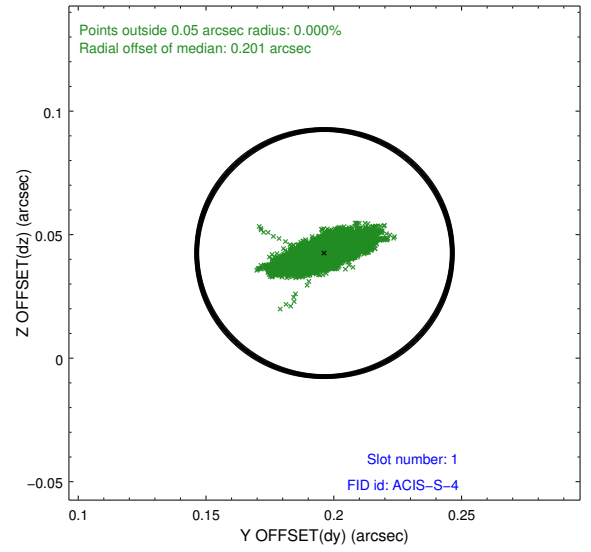
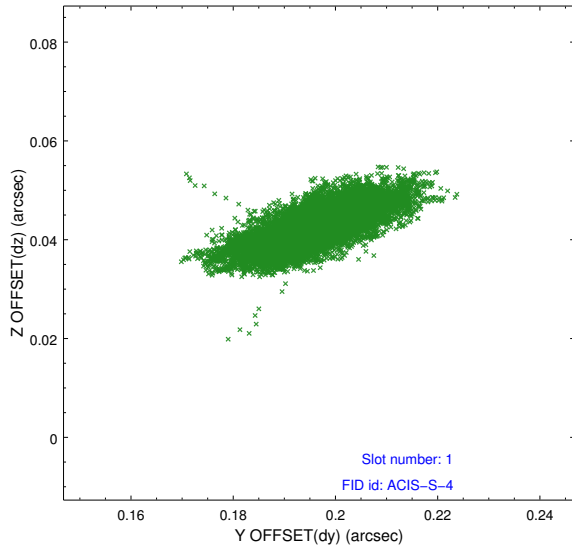


2.5 FID Slots

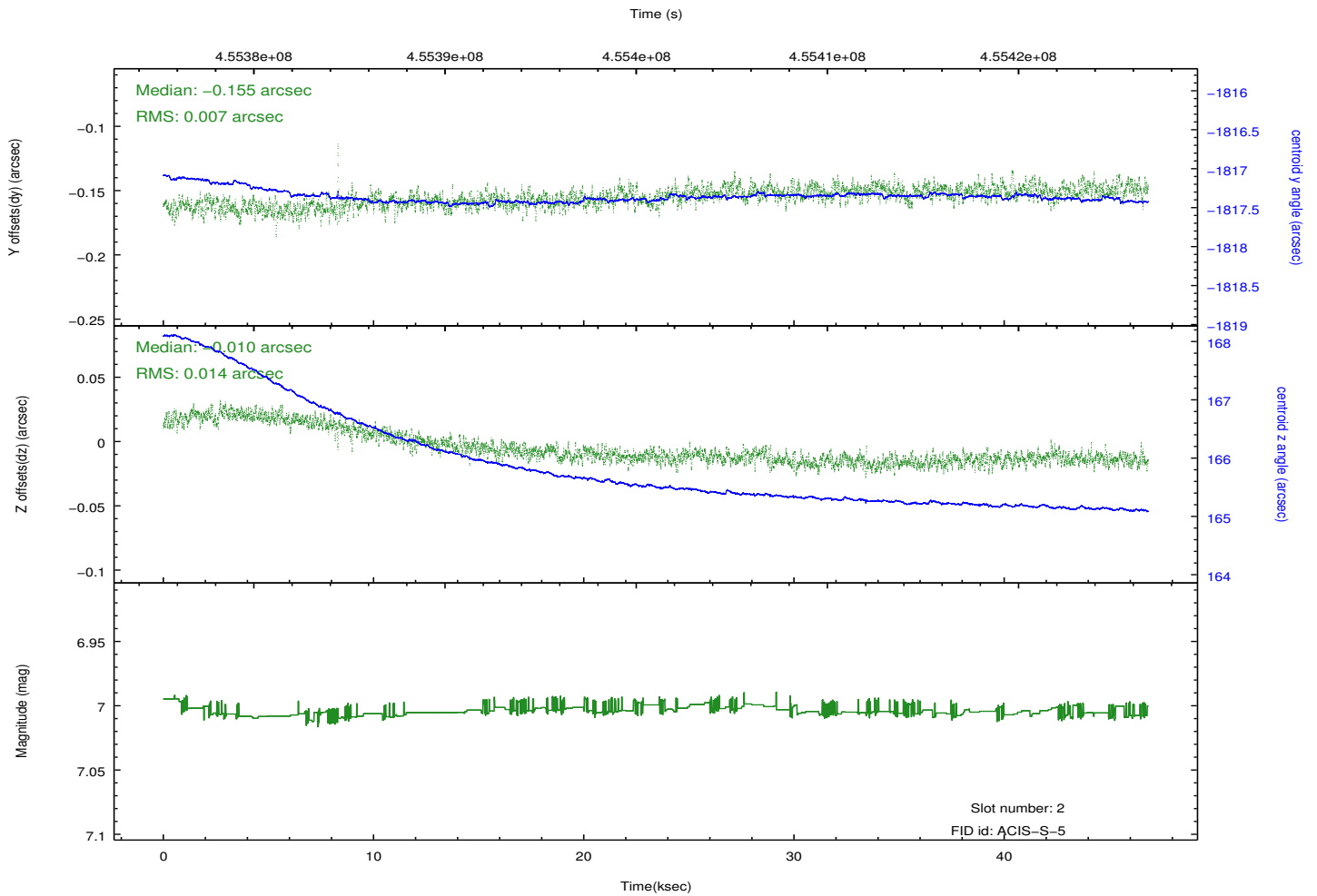
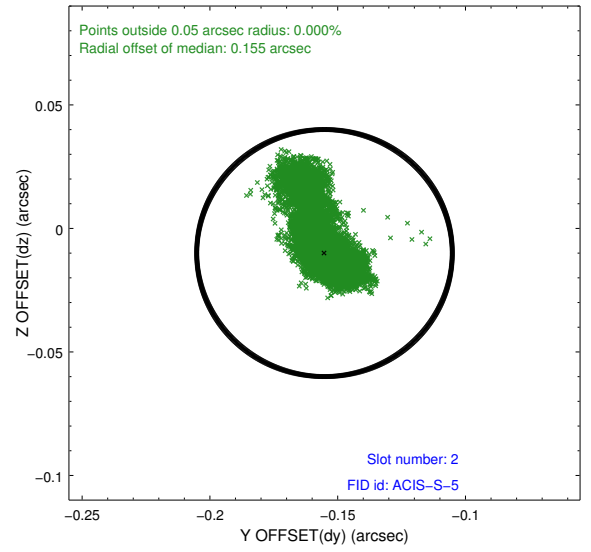
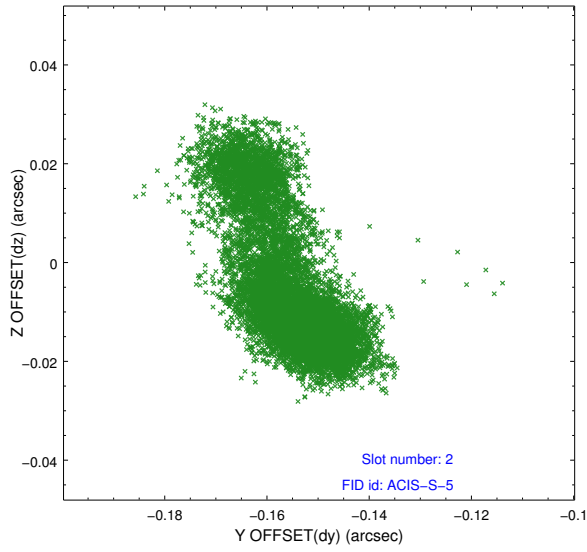
2.5.1 Slot 0



2.5.2 Slot 1



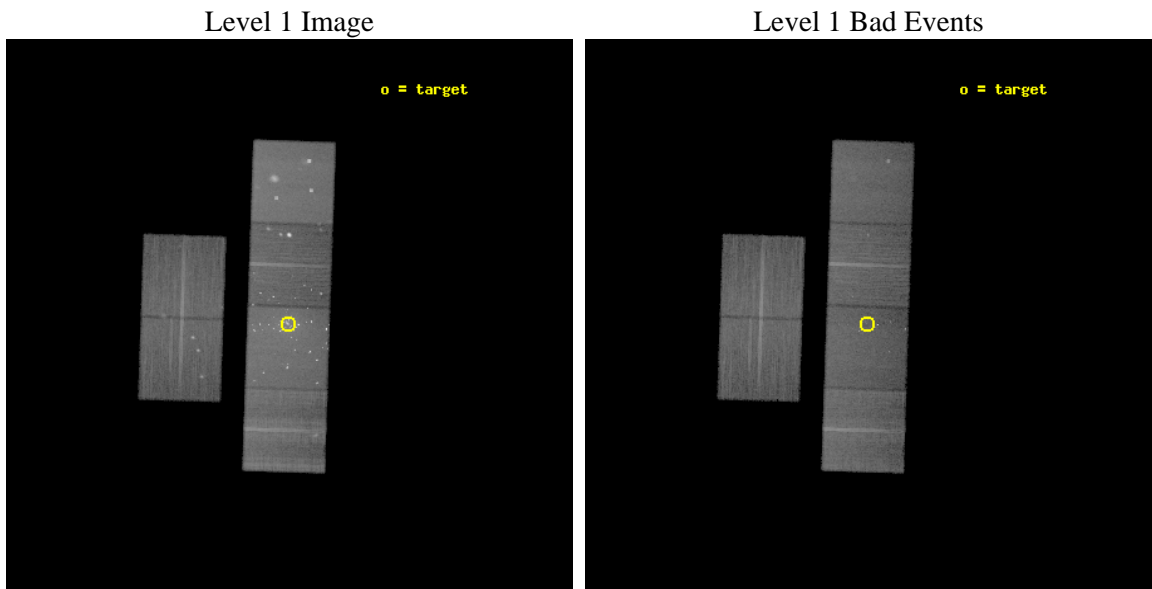
2.5.3 Slot 2



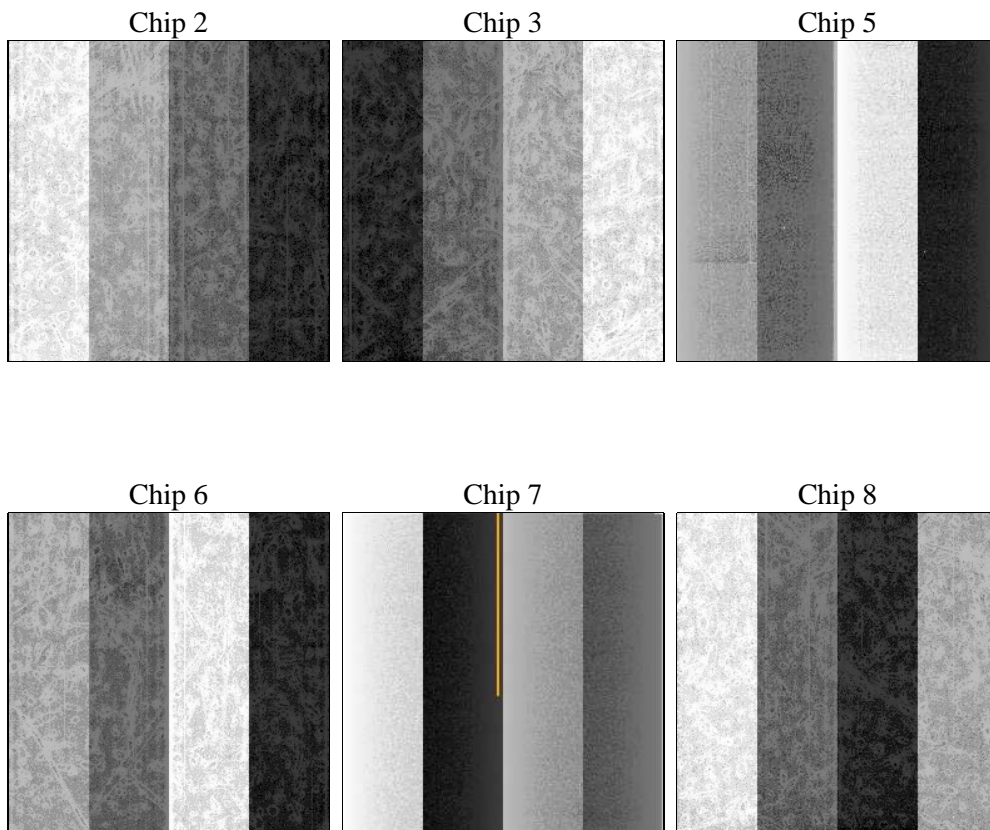
3 OBI Secondary

3.1 OBI

3.1.1 Images



3.1.2 Bias



3.1.3 Parameters

obi_num	0	Obi number	sched_exp_time	46000.000000	[s] Scheduled observation exposure time
ascdsver	8.4.5	Processing system revision	ontime	37145.938914657	Sum of GTIs [s]
caldbver	4.4.10	 	ontime2	37145.937946737	Sum of GTIs [s]
date	2012-06-07T18:05:03	Date and time of file creation	ontime3	37145.938535988	Sum of GTIs [s]
revision	1	Processing version of data	ontime5	37145.938445985	Sum of GTIs [s]
			ontime6	37145.93844676	Sum of GTIs [s]
			ontime7	37145.938914657	Sum of GTIs [s]
			ontime8	37145.938118577	Sum of GTIs [s]
			l1events	1646783	Number of level 1 events

3.1.4 Events

	ccd 2	ccd 3	ccd 5	ccd 6	ccd 7	ccd 8		ccd 2	ccd 3	ccd 5	ccd 6	ccd 7	ccd 8
level 1 events	205250	199775	357283	235922	376608	271945	grade 0 events	10389	11730	28725	37313	38263	23183
rejected events	179522	172867	169081	175842	156219	196450		5%	5%	8%	15%	10%	8%
rejected %	87%	86%	47%	74%	41%	72%	grade 1 events	147	130	1436	340	750	215
								0%	0%	0%	0%	0%	0%
							grade 2 events	5967	5280	56092	9230	50761	17334
								2%	2%	15%	3%	13%	6%
							grade 3 events	2426	2531	7396	3558	21761	7853
								1%	1%	2%	1%	5%	2%
							grade 4 events	2345	2595	7129	3629	21633	7267
								1%	1%	1%	1%	5%	2%
							grade 5 events	8873	10185	25656	10243	30384	14777
								4%	5%	7%	4%	8%	5%
							grade 6 events	4602	4775	88876	6353	87988	19863
								2%	2%	24%	2%	23%	7%
							grade 7 events	170501	162549	141973	165256	125068	181453
								83%	81%	39%	70%	33%	66%

A Summary

A.1 Status

V&V Scientist	Joy Nichols
V&V Date (YYYY-MM-DD)	2012.06.08
V&V Edition	1
V&V Disposition and Status	OK
V&V Charge Time	45.8741258196238

A.2 Comments