

V&V Reference Report

L2 ASCDS Version : 8.1.1

Observation 1386 - L2 Version 3
Chandra X-Ray Center

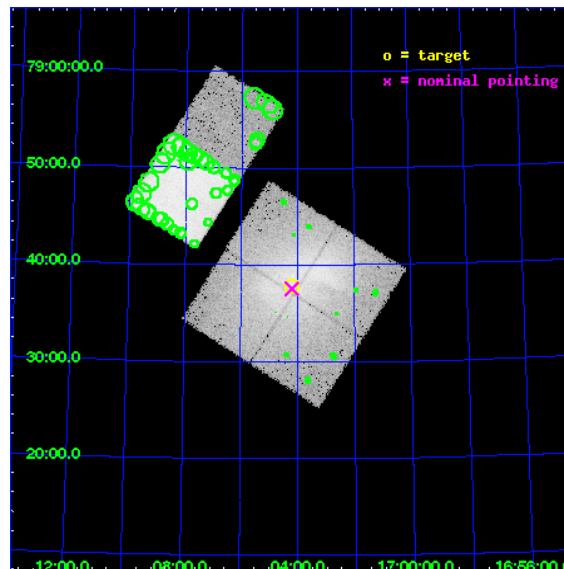
L2 Processing Date : Nov 19 2009

Contents

1	Front	2
2	OBI	3
2.1	OBI	3
2.1.1	Images	3
2.1.2	Bias	3
2.1.3	Parameters	4
2.1.4	Events	4
2.2	Compared Parameters	5
2.3	Aspect	6
2.4	Star Slots	9
2.4.1	Slot 3	9
2.4.2	Slot 4	10
2.4.3	Slot 5	11
2.4.4	Slot 6	12
2.4.5	Slot 7	13
2.5	FID Slots	14
2.5.1	Slot 0	14
2.5.2	Slot 1	15
2.5.3	Slot 2	16
3	Point Sources	17
A	Summary	18
A.1	Status	18
A.2	Comments	18

1 Front

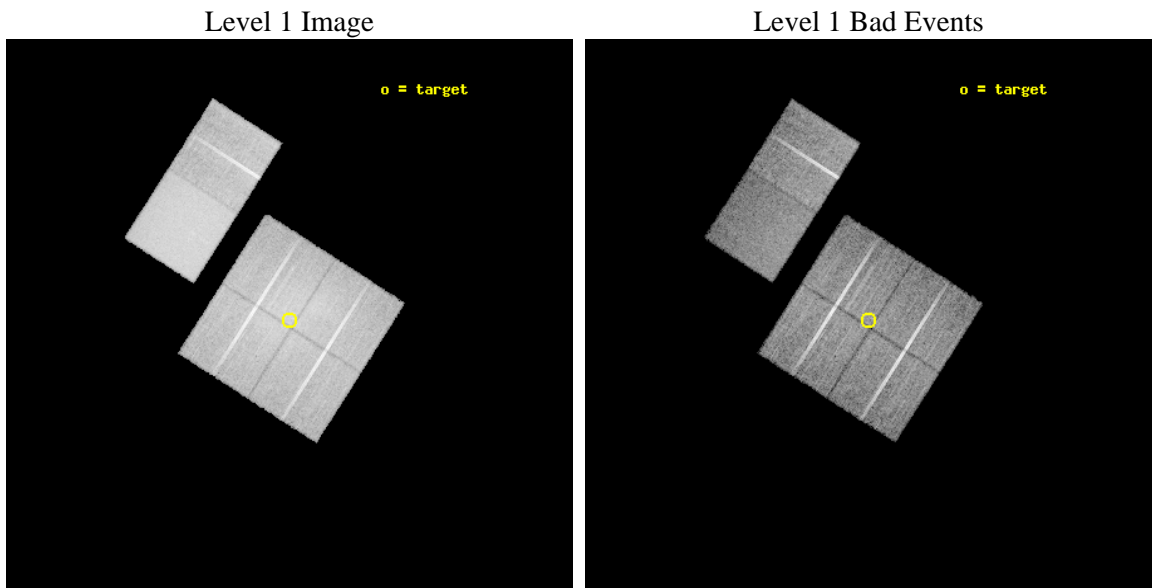
seq_num	880336	Sequence number
obs_id	1386	Observation id
title	MASS DISTRIBUTIONS OF RELAXED CLUSTERS	Proposal title
observer	Dr Steve Murray	Principal investigator
object	A2256	Source name
dtcycle	0	
cycle	P	events from which exps? Prim/Second/Both
ra_targ	256.04479	Observer's specified target RA
dec_targ	78.631	Observer's specified target Dec
ra_nom	256.0491580103	Nominal RA
dec_nom	78.625765648009	Nominal Dec
roll_nom	302.64804538805	Nominal Roll
revision	3	Processing version of data
ontime	12534.027481832	Sum of GTIs [s]
livetime	12375.314078771	Livetime [s]
ontime0	12537.391562045	Sum of GTIs [s]
ontime1	12537.350522049	Sum of GTIs [s]
ontime2	12534.068551756	Sum of GTIs [s]
ontime3	12534.027481832	Sum of GTIs [s]
ontime7	12534.19164183	Sum of GTIs [s]
ontime8	12537.227402046	Sum of GTIs [s]
l2events	279446	Number of level 2 events



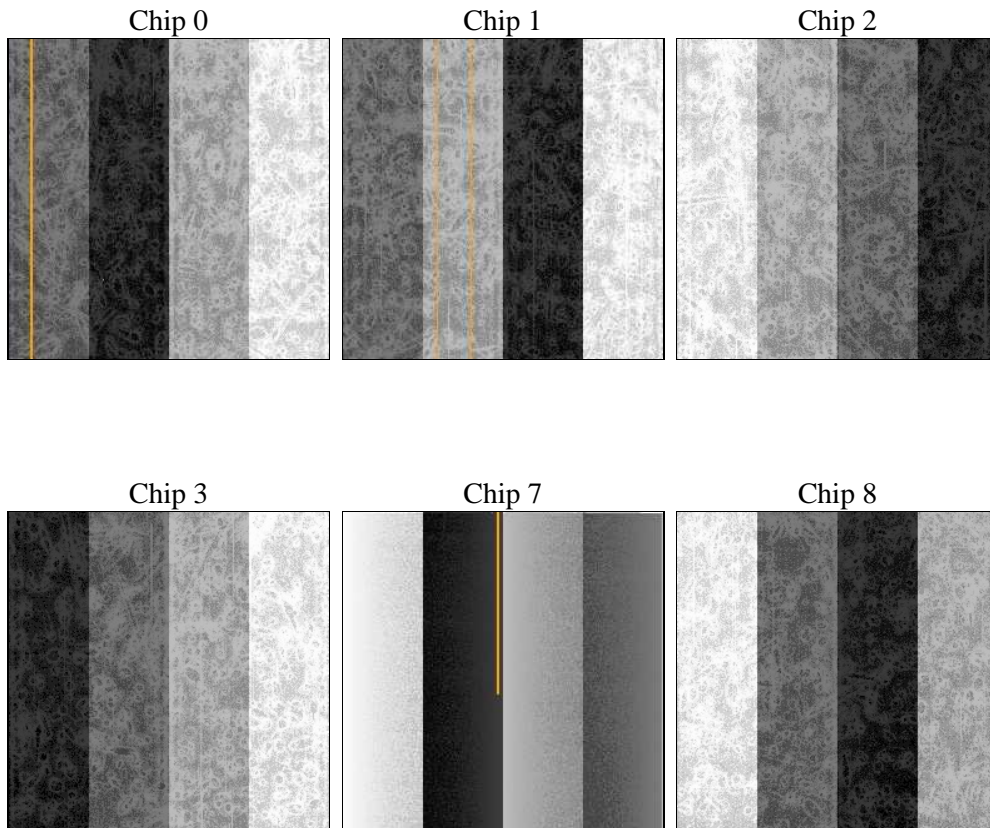
2 OBI

2.1 OBI

2.1.1 Images



2.1.2 Bias



2.1.3 Parameters

obi_num	0	Obi number	sched_exp_time	13500.000000	Scheduled observation exposure time
ascdsver	8.1.1	ASCDS version number	ontime	12534.027481832	Sum of GTIs [s]
caldbver	4.1.4	 	ontime0	12537.391562045	Sum of GTIs [s]
date	2009-11-19T16:41:05	Date and time of file creation	ontime1	12537.350522049	Sum of GTIs [s]
revision	3	Processing version of data	ontime2	12534.068551756	Sum of GTIs [s]
			ontime3	12534.027481832	Sum of GTIs [s]
			ontime7	12534.19164183	Sum of GTIs [s]
			ontime8	12537.227402046	Sum of GTIs [s]
			l1events	916470	Number of level 1 events

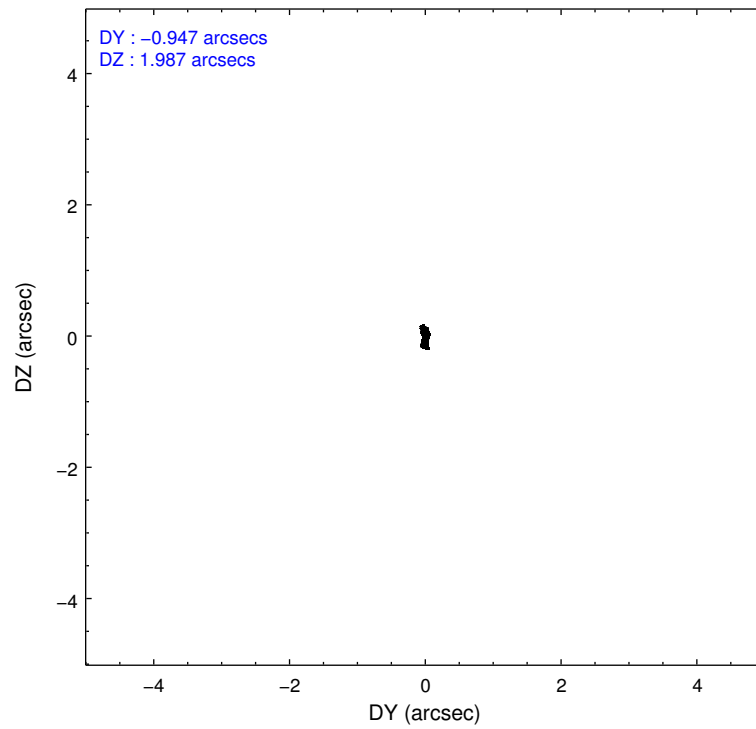
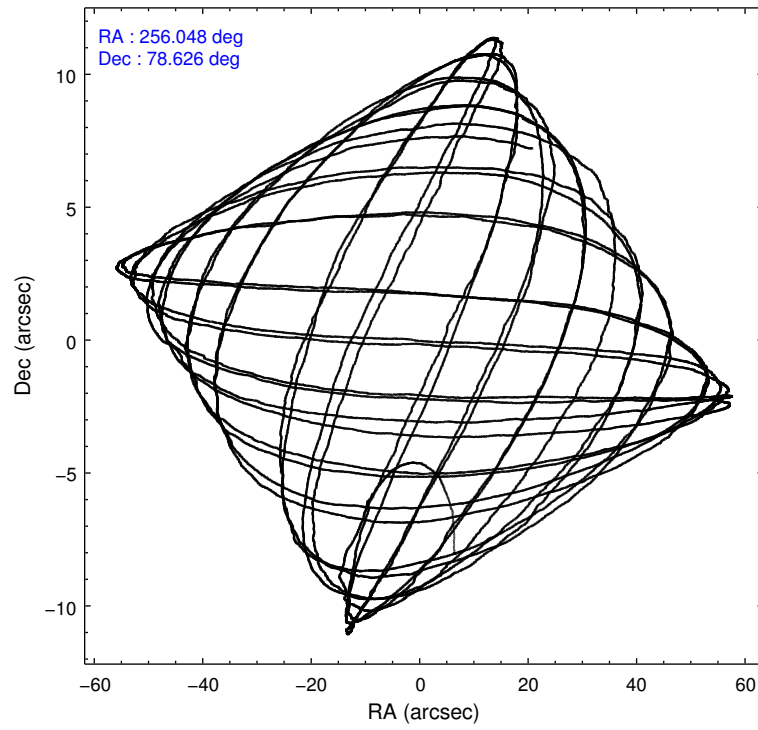
2.1.4 Events

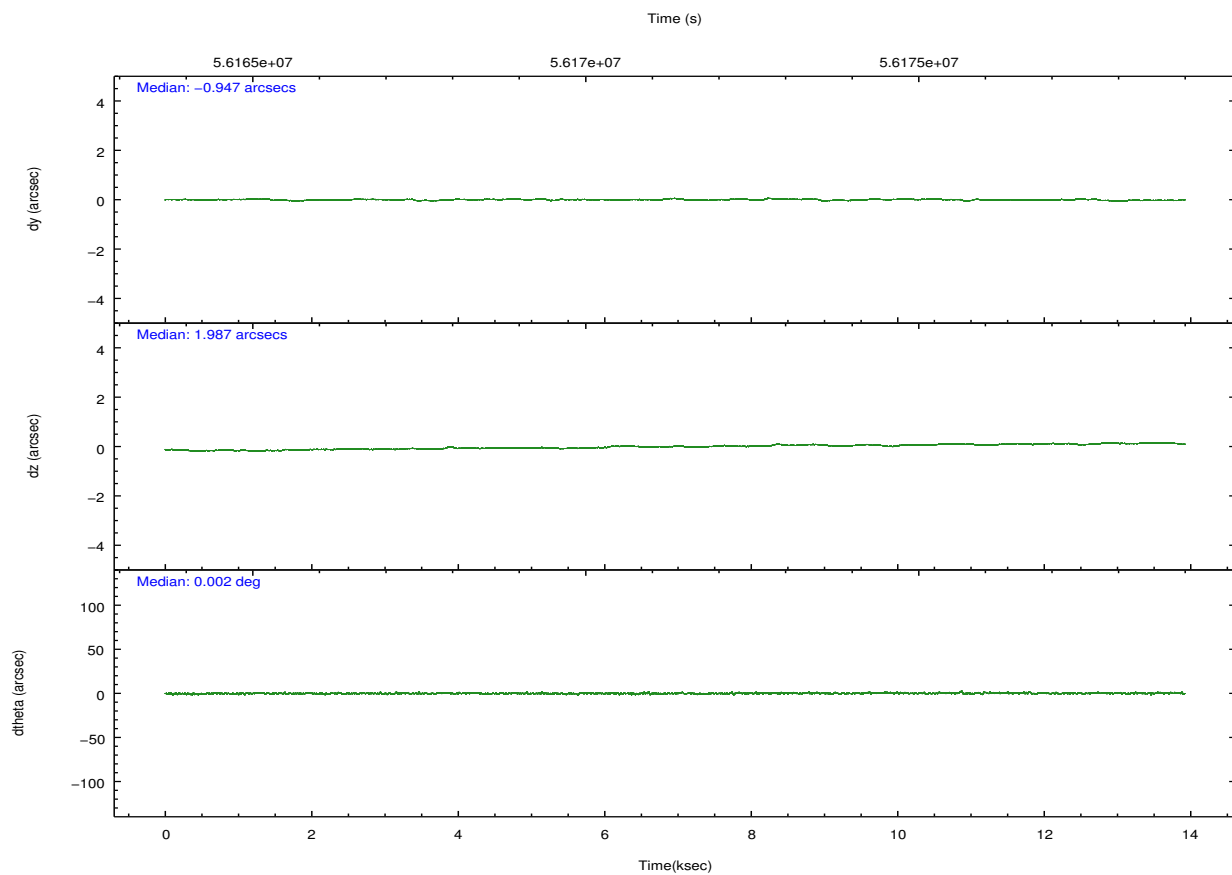
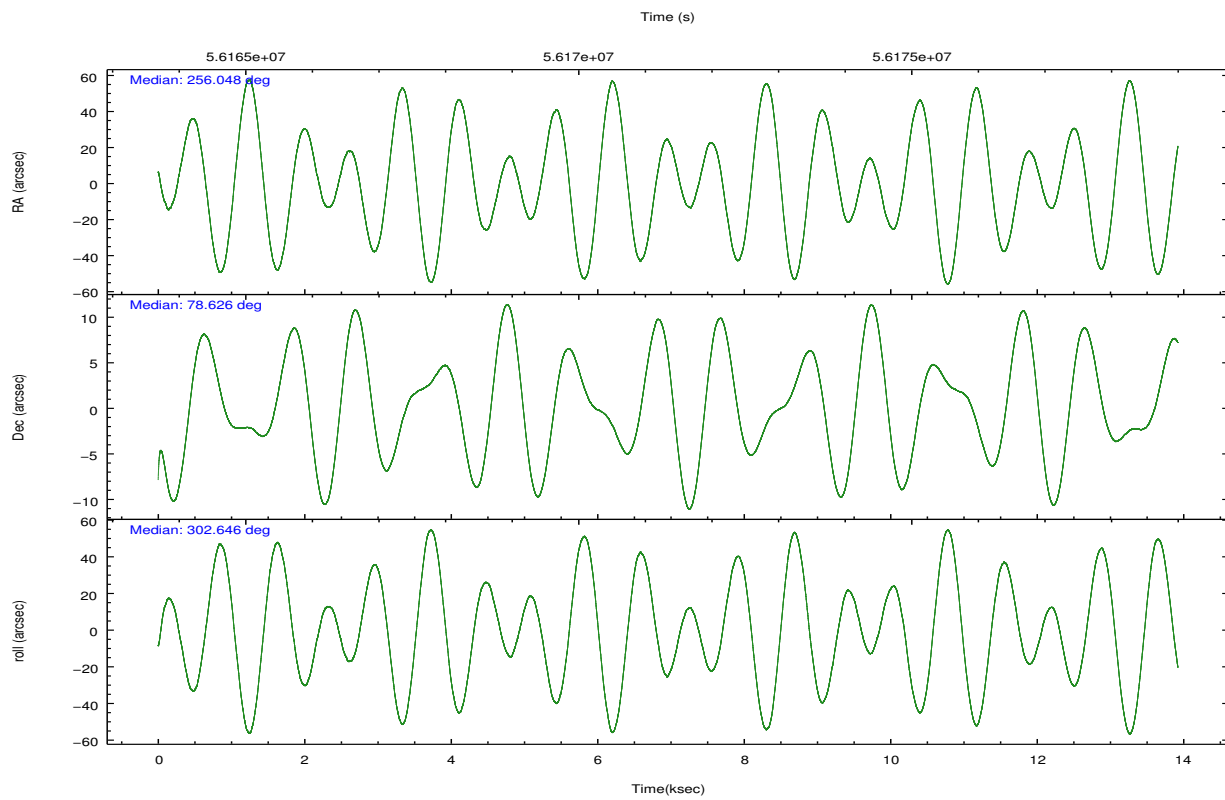
	ccd 0	ccd 1	ccd 2	ccd 3	ccd 7	ccd 8		ccd 0	ccd 1	ccd 2	ccd 3	ccd 7	ccd 8
level 1 events	127490	143366	145823	145386	213578	140827	grade 0 events	12961	24770	15666	20203	14057	6455
rejected events	100890	100729	112721	105292	84551	114968		10%	17%	10%	13%	6%	4%
rejected %	79%	70%	77%	72%	39%	81%	grade 1 events	68	79	48	56	69	44
								0%	0%	0%	0%	0%	0%
							grade 2 events	8350	10801	11923	13742	26044	8835
								6%	7%	8%	9%	12%	6%
							grade 3 events	1104	1677	1096	1285	9018	2026
								0%	1%	0%	0%	4%	1%
							grade 4 events	1097	1589	1140	1222	8365	1791
								0%	1%	0%	0%	3%	1%
							grade 5 events	2417	2527	2010	2344	8309	3156
								1%	1%	1%	1%	3%	2%
							grade 6 events	3107	3828	3303	3672	71813	6770
								2%	2%	2%	2%	33%	4%
							grade 7 events	98386	98095	110637	102862	75903	111750
								77%	68%	75%	70%	35%	79%

2.2 Compared Parameters

Parameter	Planned	Actual	Parameter	Planned	Actual
Instrument	ACIS	ACIS	Obspar format version number	6	6
Detector	ACIS-012378	ACIS-012378	Obspar file type	PREDICTED	ACTUAL
Grating	NONE	NONE	Obspar update status	NONE	UPDATED
Data mode	FAINT	FAINT	Number of optional ACIS chips dropped	0	0
Observation mode	POINTING	POINTING	On-chip summing requested	N	N
Pointing RA	255.925014	256.0491580103039	Subarray requested	NONE	NONE
Pointing Dec	78.638921	78.62576564800949	Alternating exposures requested	N	N
Pointing Roll	302.561069	302.6480453880493	Primary exposure time	0.000000	3.2
SIM focus pos (mm)	-0.782348	-0.7809083437167272			
SIM defocus (mm)	0	0.001439871863259334			
SIM translation stage pos (mm)	-233.592463	-233.5874344608287			
SIM translation stage offset (mm)	0	-0.005018542100998502			
Observation start time	56164802.184000	56163191.698213			
Observation start date	1999-10-13T01:18:58	1999-10-13T00:53:11			
Observation end time	56178302.184000	56179007.448782			
Observation end date	1999-10-13T05:03:58	1999-10-13T05:16:47			
Read mode	TIMED	TIMED			

2.3 Aspect



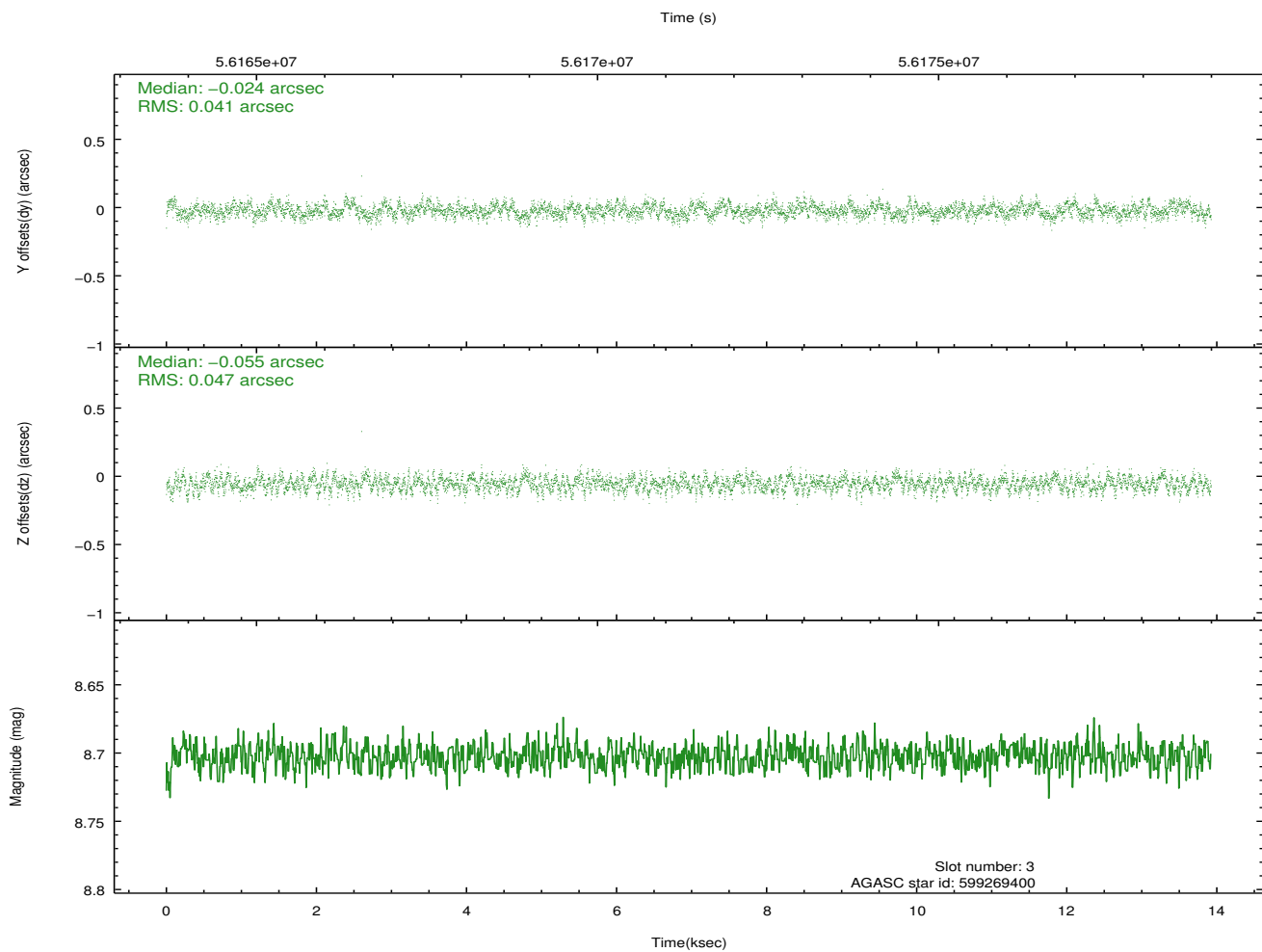
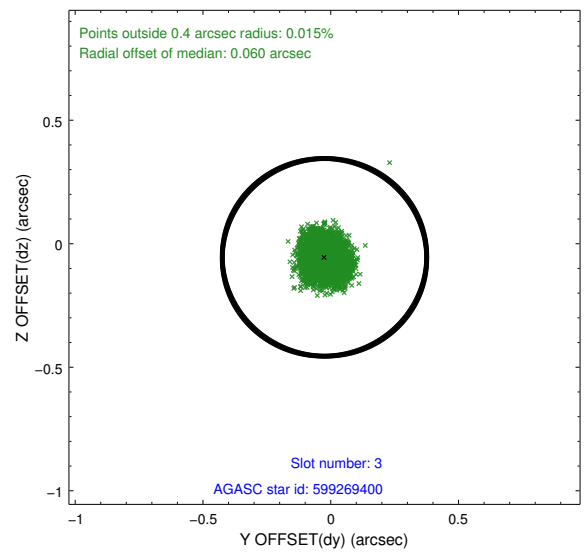
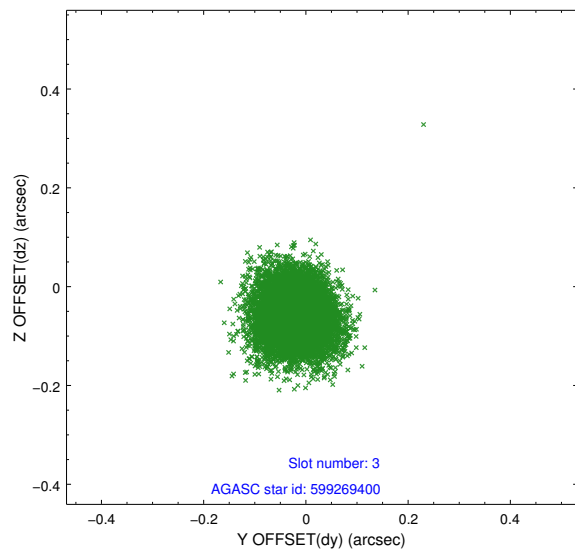


Slot Statistics

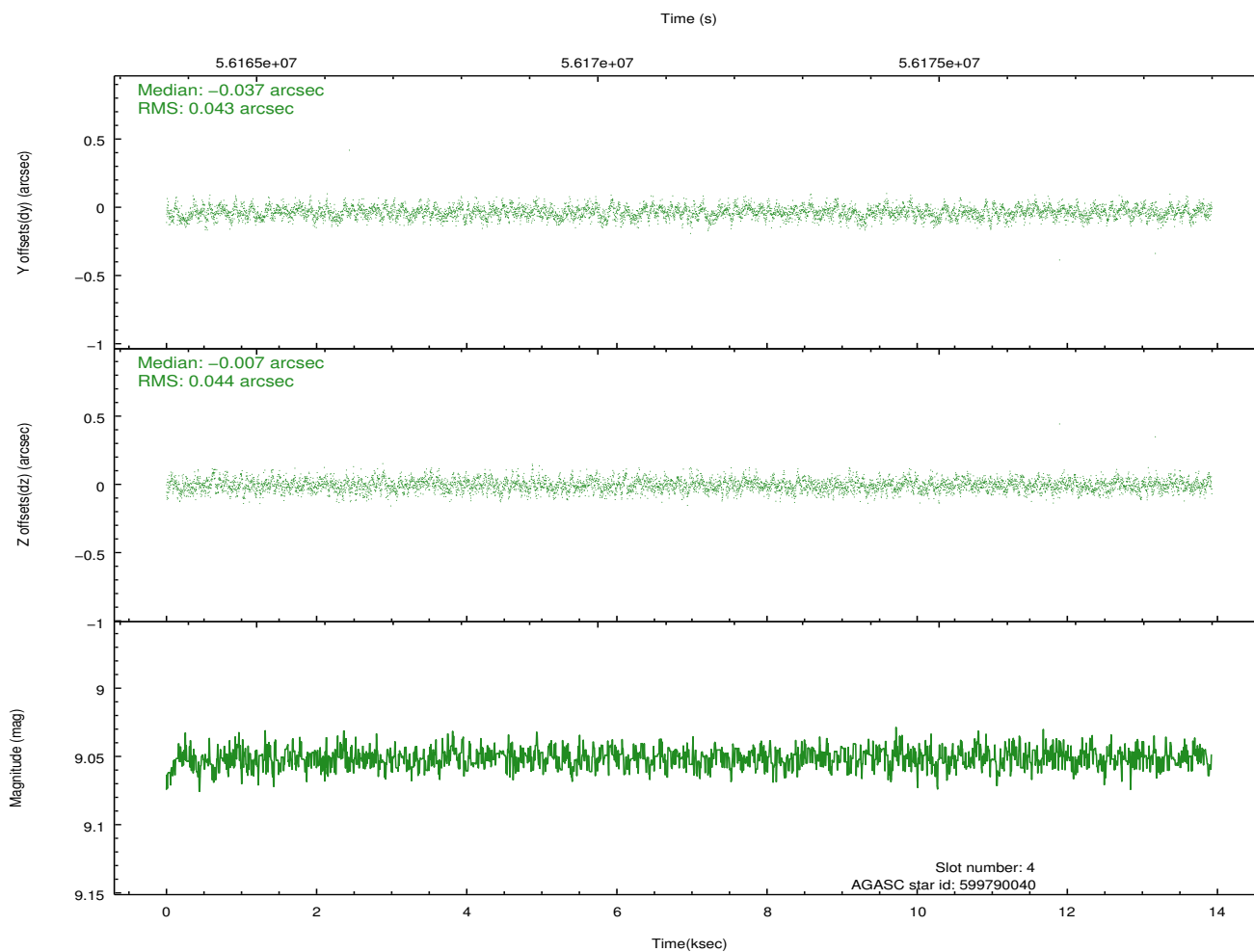
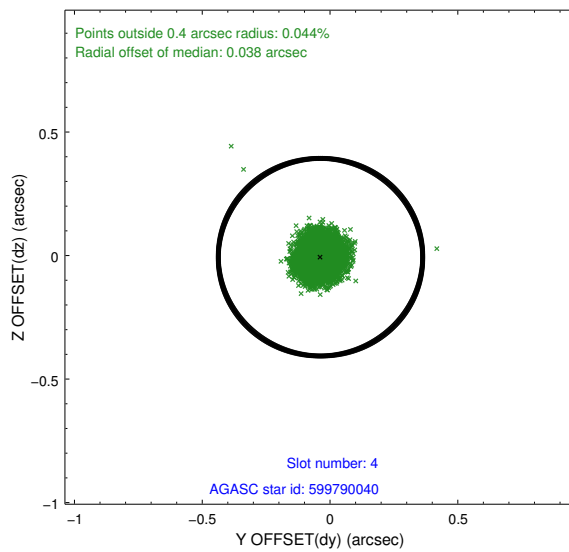
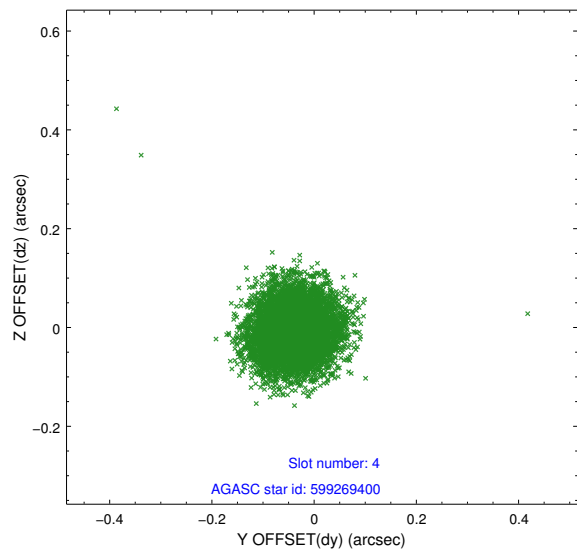
slot	status	id	mag	n_pts	med_dy	med_dz	dr1	dr2	ra	dec	mean_y	mean_z
0	FID	ACIS-I-2	7.20	6792	-0.047	0.048	0.009	0.015	0.000000	0.000000	-753.43	-831.50
1	FID	ACIS-I-4	7.22	6790	0.101	0.021	0.006	0.011	0.000000	0.000000	2160.87	1074.40
2	FID	ACIS-I-5	7.23	6792	-0.155	-0.000	0.009	0.014	0.000000	0.000000	-1807.11	1072.61
3	GUIDE	599269400	8.70	6789	-0.024	-0.055	0.067	0.106	254.398050	78.499006	-177.50	-1186.39
4	GUIDE	599790040	9.05	6789	-0.037	-0.007	0.066	0.105	252.479590	78.878159	-2072.47	-1513.50
5	GUIDE	599789480	8.83	6790	-0.025	-0.044	0.071	0.114	253.845424	78.947438	-1730.37	-597.55
6	GUIDE	599263768	9.69	6788	-0.058	-0.077	0.087	0.141	258.248120	78.312570	1872.86	813.97
7	GUIDE	599399032	9.83	6784	0.149	0.185	0.116	0.185	260.577377	78.393779	2442.64	2435.35

2.4 Star Slots

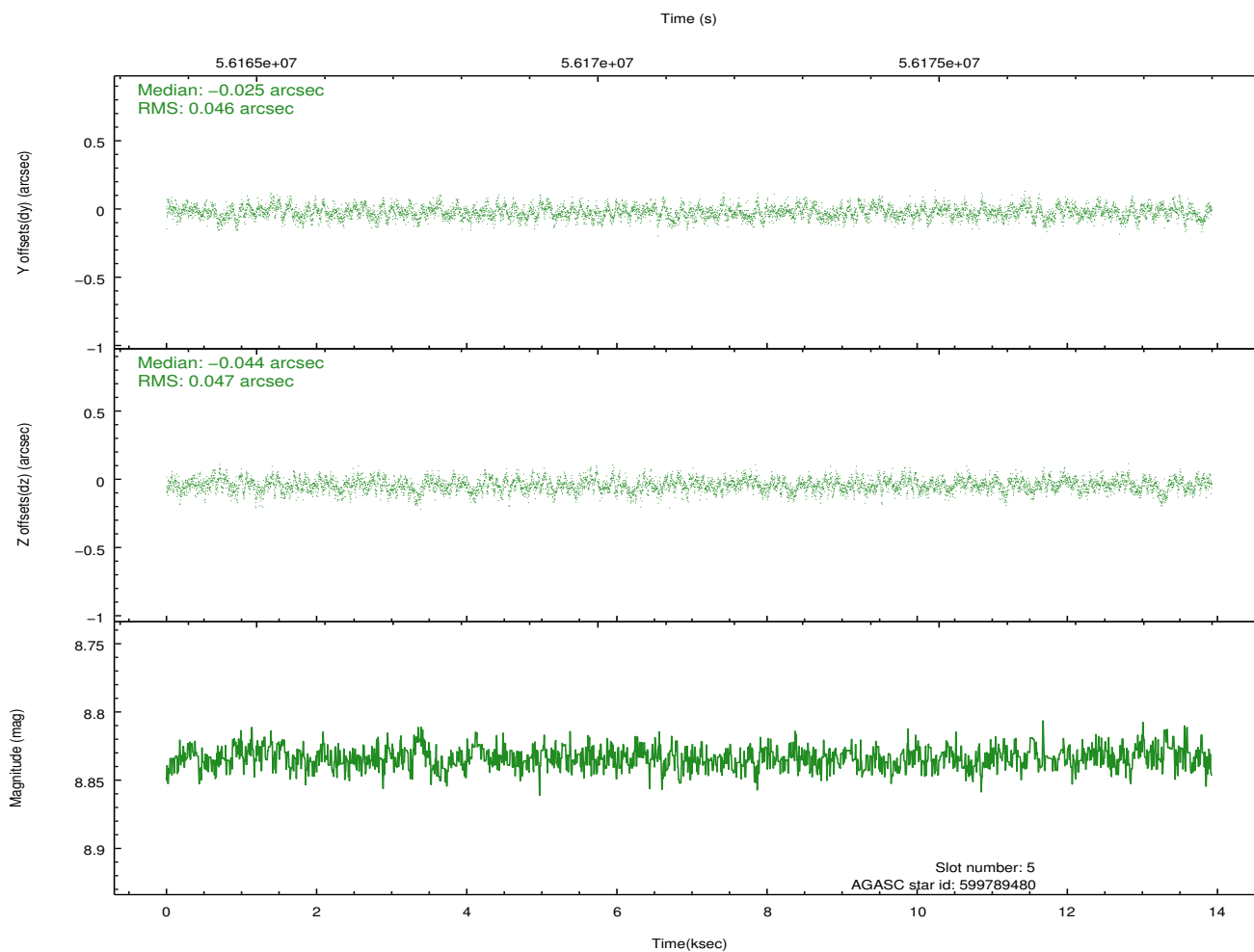
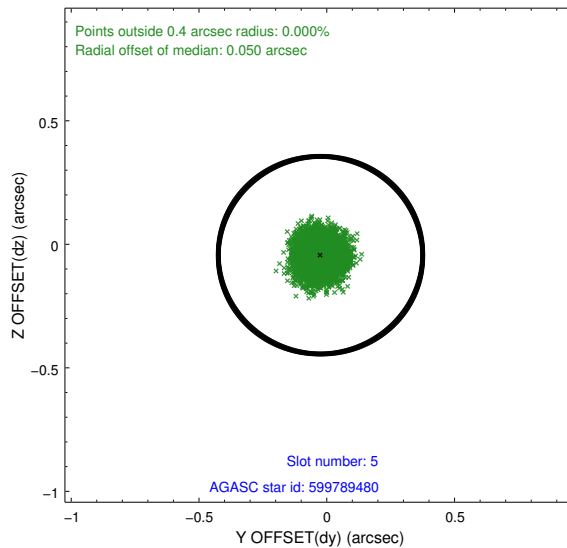
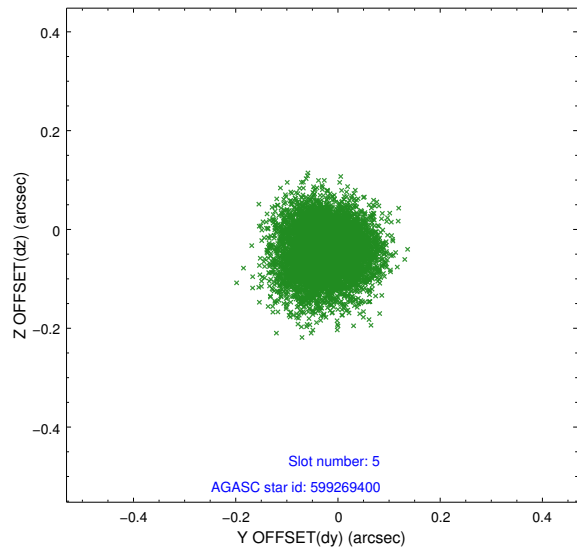
2.4.1 Slot 3



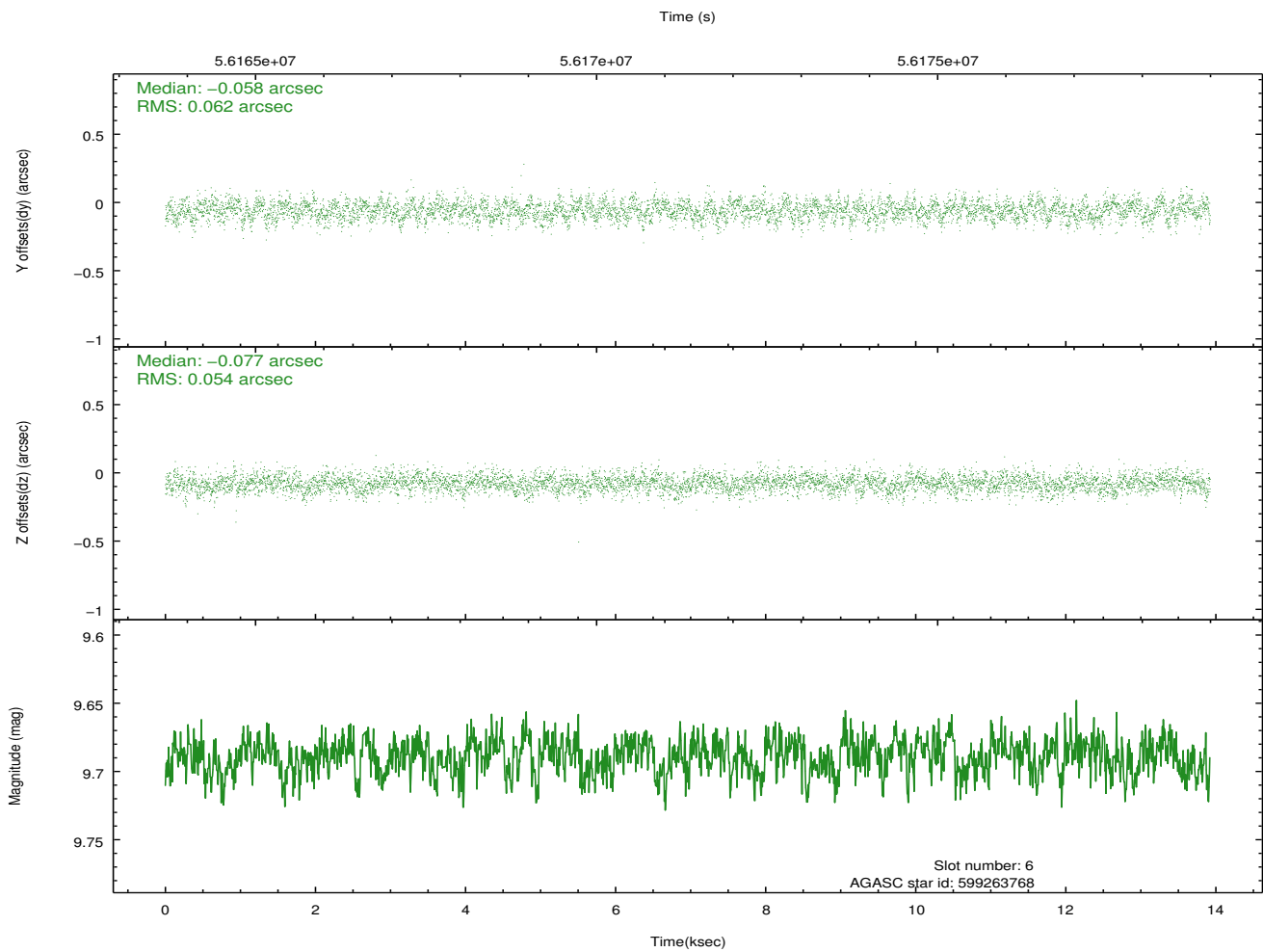
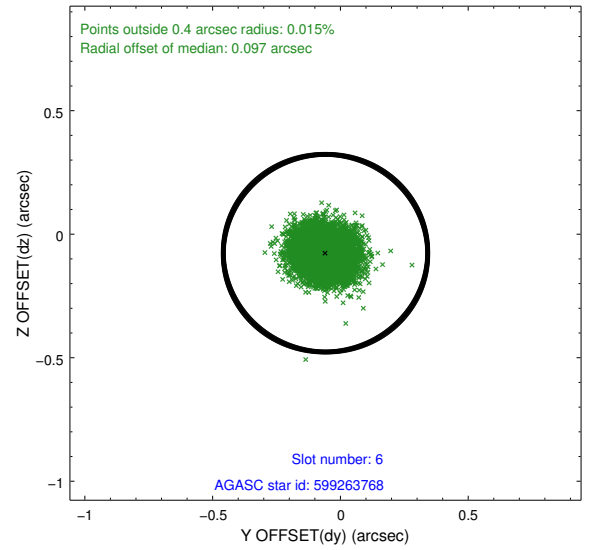
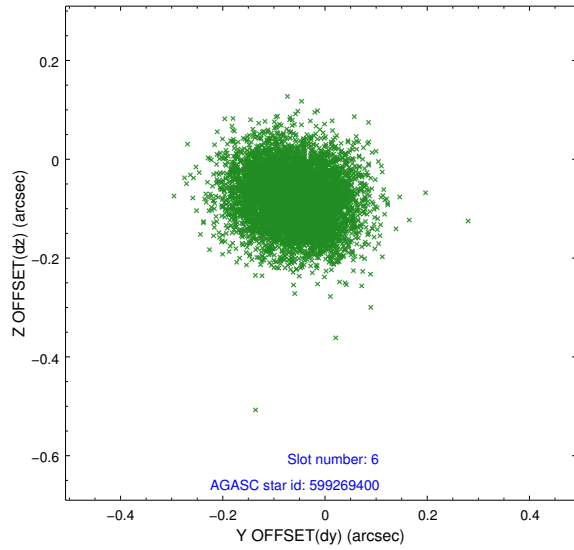
2.4.2 Slot 4



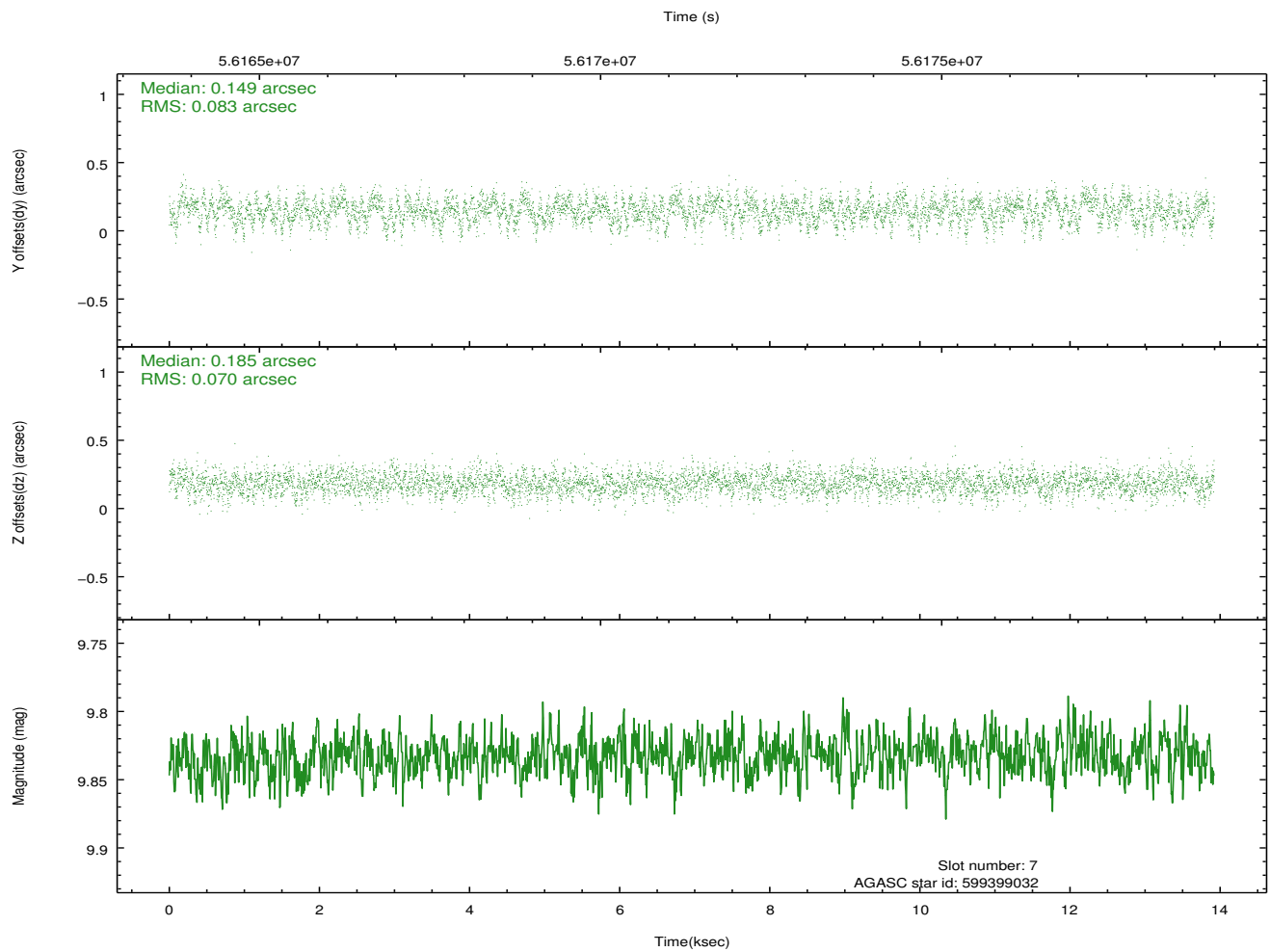
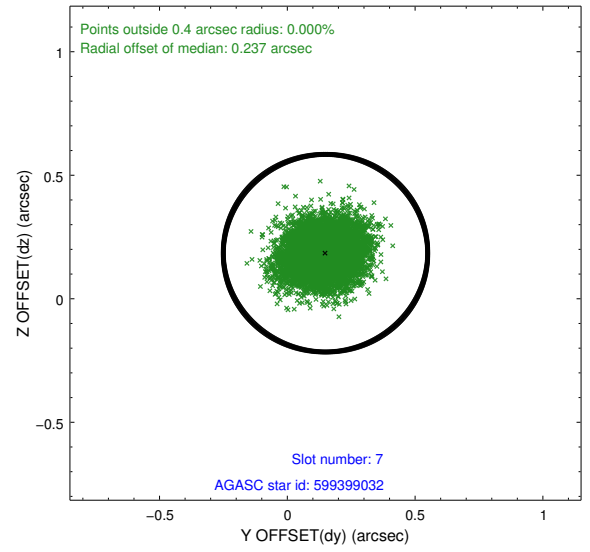
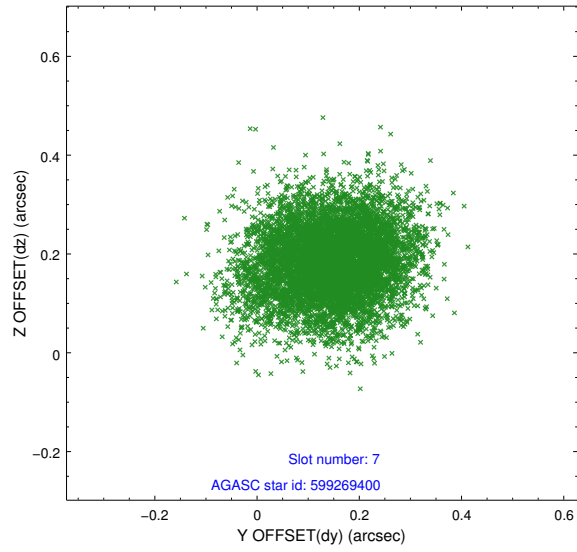
2.4.3 Slot 5



2.4.4 Slot 6

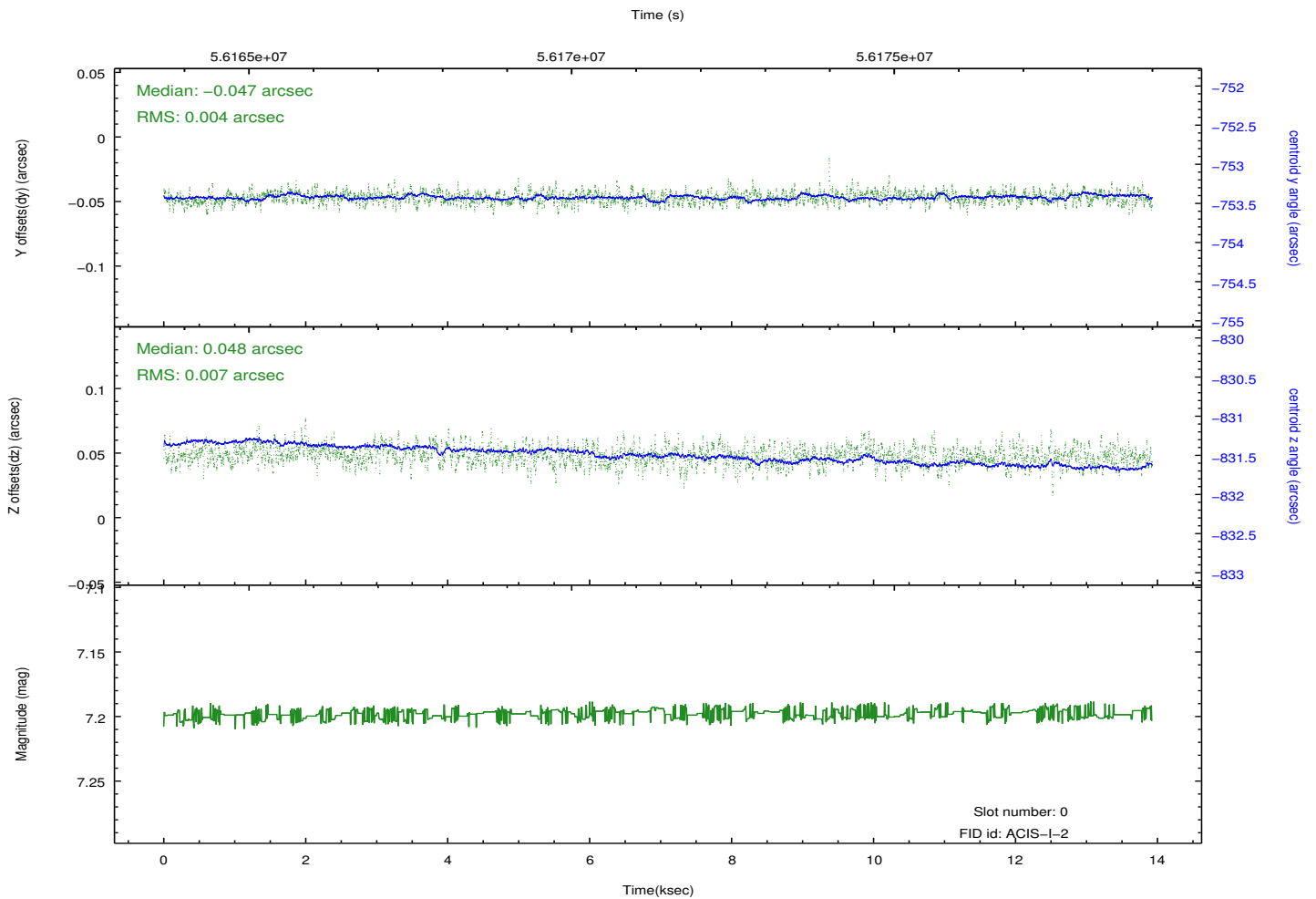
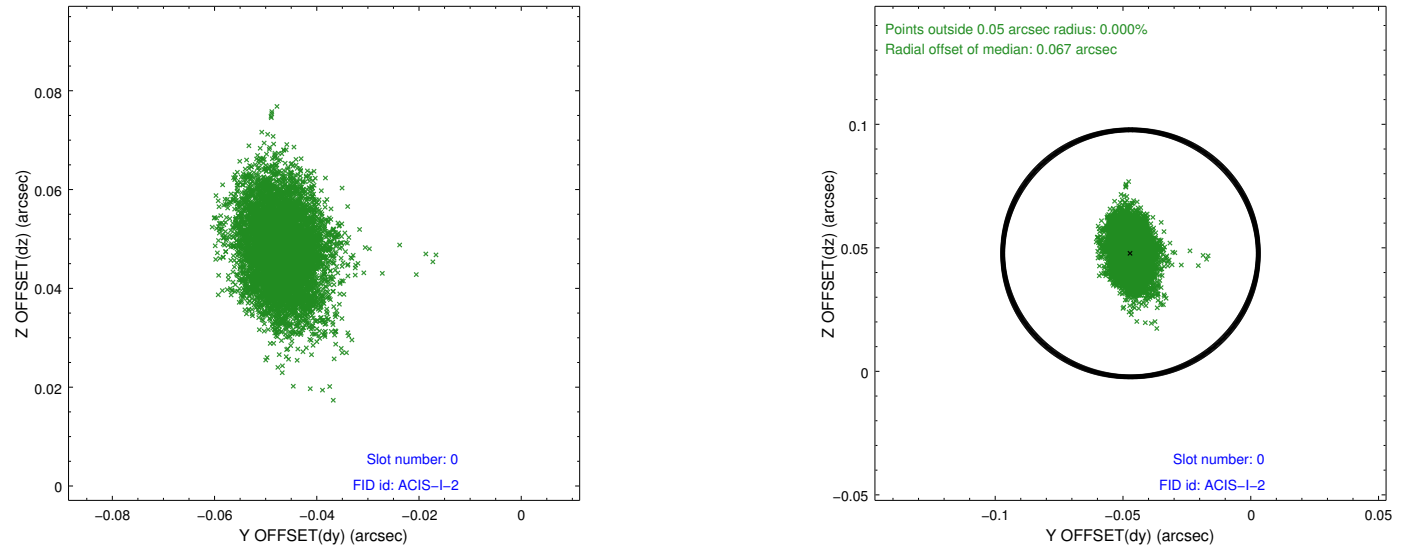


2.4.5 Slot 7

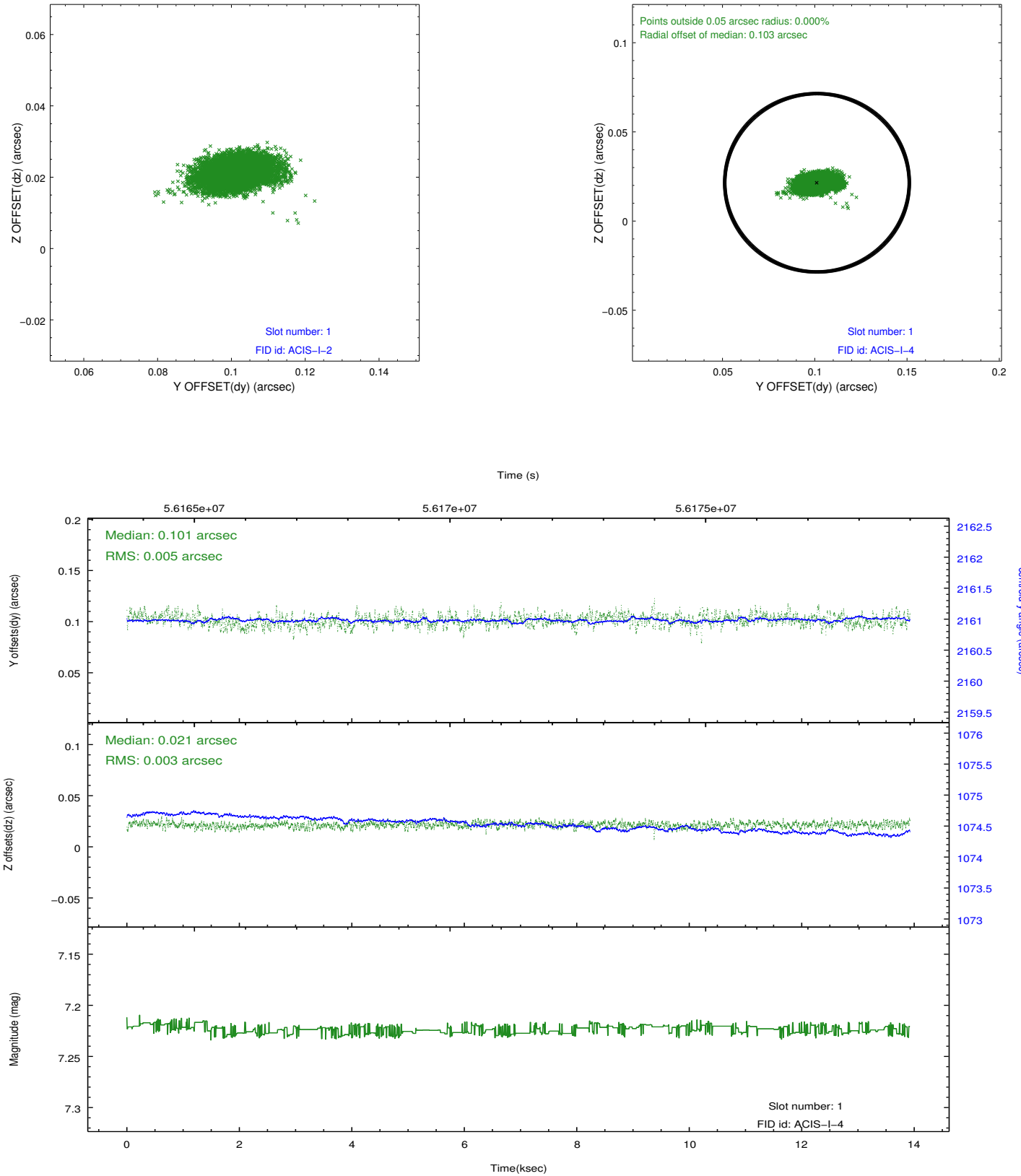


2.5 FID Slots

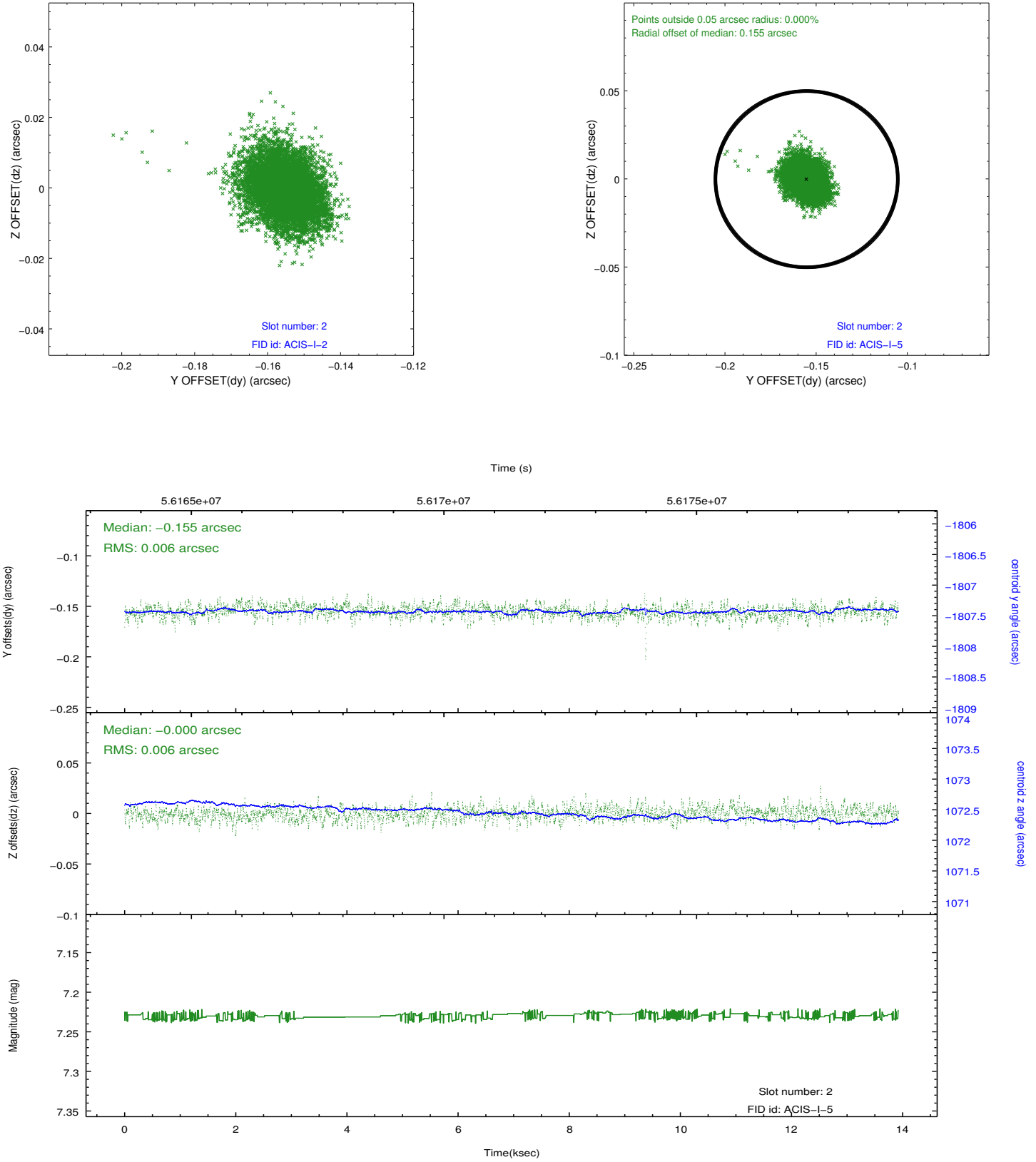
2.5.1 Slot 0



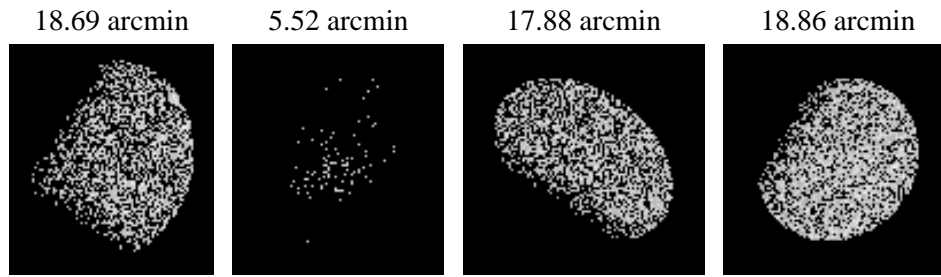
2.5.2 Slot 1



2.5.3 Slot 2



3 Point Sources



A Summary

A.1 Status

V&V Scientist	Joy Nichols
V&V Date (YYYY-MM-DD)	2010.03.05
V&V Edition	1
V&V Disposition and Status	OK
V&V Charge Time	12.534

A.2 Comments

The focal plane temperature is approximately -110 C during this observation. This reprocessing of the data applies no CTI correction because none is available for this temperature at present.

The ACIS CTI correction has not been calibrated at this temperature, because it was early in the mission, and ACIS had not yet been lowered to the standard -119.7 C. Both front and back illuminated chips are affected. However a T_GAIN correction has been applied to the BI chips (ACIS-5 and ACIS-7) data included here.

The ACIS spectral response calibration is less accurate at these warmer temperatures than it is at -119.7 C. Users whose science objectives depend on the most accurate spectral response (ie: fitting line-rich spectra) may notice an effect. Users whose science objectives do not depend on the most accurate spectral response should not notice an effect.