

V&V Reference Report

L2 ASCDS Version : 8.4.5

Observation 13926 - L2 Version 1
Chandra X-Ray Center

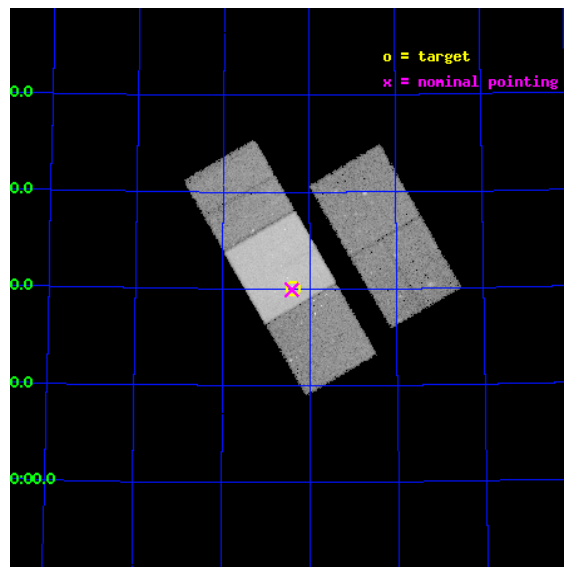
L2 Processing Date : Sep 11 2012

Contents

1	Front	2
2	OBI	3
2.1	OBI	3
2.1.1	Images	3
2.1.2	Bias	3
2.1.3	Parameters	4
2.1.4	Events	4
2.2	Compared Parameters	5
2.3	Aspect	6
2.4	Star Slots	9
2.4.1	Slot 3	9
2.4.2	Slot 4	10
2.4.3	Slot 5	11
2.4.4	Slot 6	12
2.4.5	Slot 7	13
2.5	FID Slots	14
2.5.1	Slot 0	14
2.5.2	Slot 1	15
2.5.3	Slot 2	16
A	Summary	17
A.1	Status	17
A.2	Comments	17

1 Front

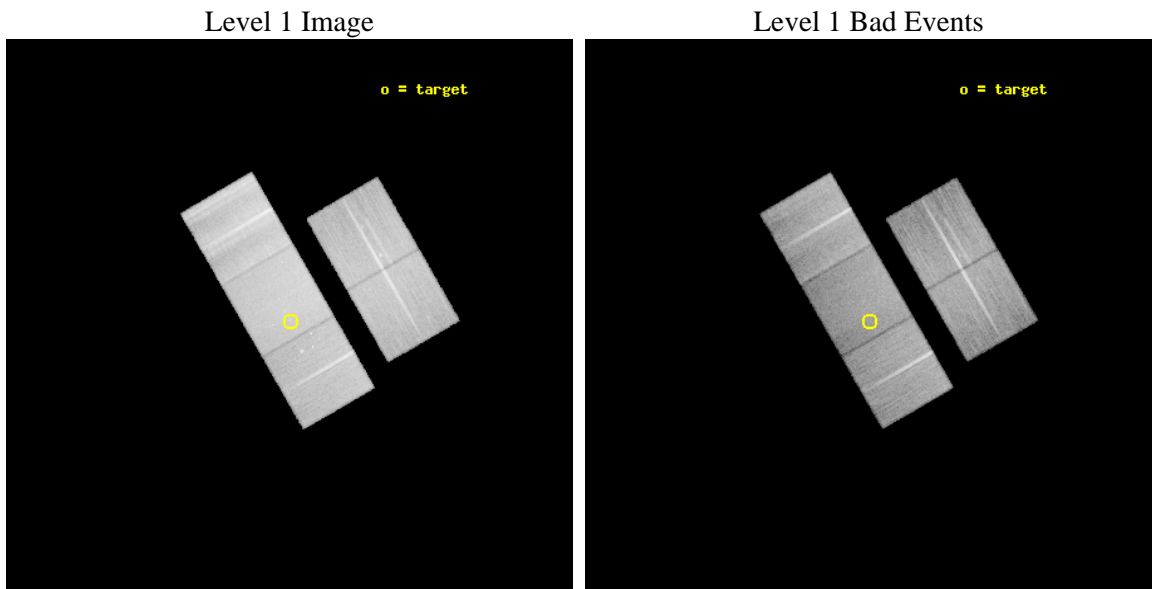
seq_num	702650	Sequence number
obs_id	13926	Observation id
title	Inverse-Compton Emission from the Lobes of Powerful High-Redshift Radio Galaxies	Proposal title
observer	Dr. Dharam Lal	Principal investigator
object	4C +72.26	Source name
dtcycle	0	
cycle	P	events from which exps? Prim/Second/Both
ra_targ	287.0975	Observer's specified target RA [deg]
dec_targ	72.334694	Observer's specified target Dec [deg]
ra_nom	287.10207333333	Nominal RA [deg]
dec_nom	72.332014337227	Nominal Dec [deg]
roll_nom	239.99316319823	Nominal Roll [deg]
revision	1	Processing version of data
ontime	48966.808812201	Sum of GTIs [s]
livetime	48327.021406229	Livetime [s]
ontime2	48963.503621817	Sum of GTIs [s]
ontime3	48966.726732194	Sum of GTIs [s]
ontime6	48960.485761821	Sum of GTIs [s]
ontime7	48966.808812201	Sum of GTIs [s]
ontime8	48960.403701723	Sum of GTIs [s]
l2events	256408	Number of level 2 events



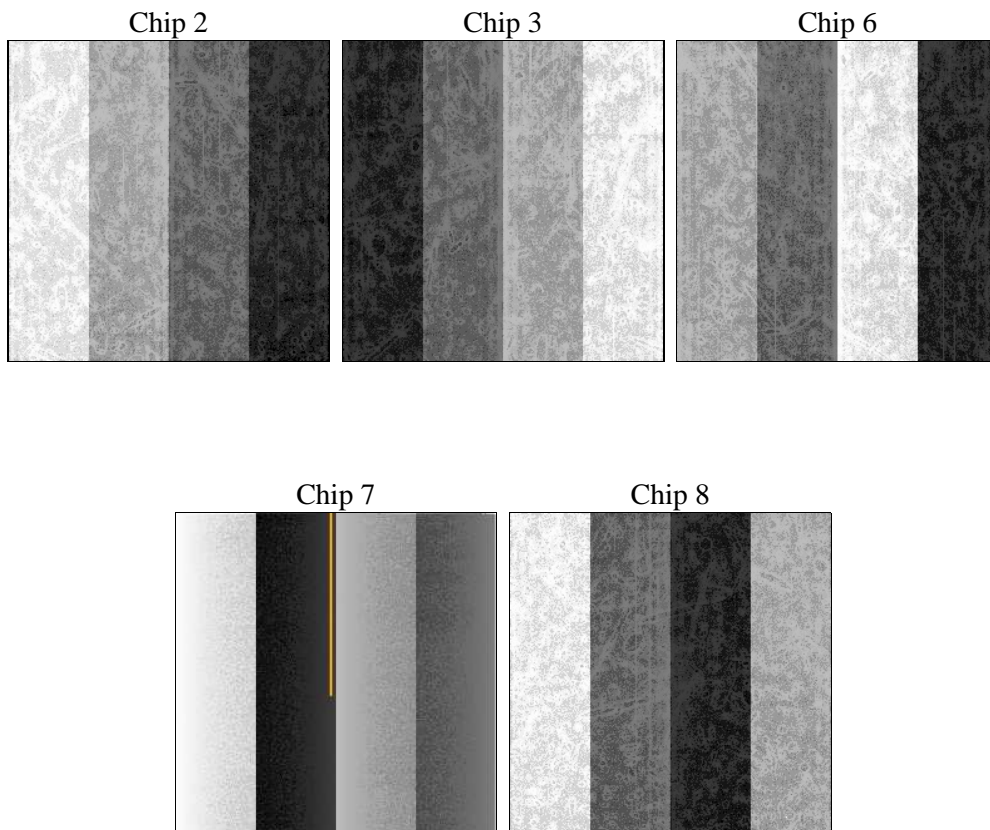
2 OBI

2.1 OBI

2.1.1 Images



2.1.2 Bias



2.1.3 Parameters

obi_num	1	Obi number	sched_exp_time	48900.000000	[s] Scheduled observation exposure time
ascdsver	8.4.5	Processing system revision	ontime	48966.808812201	Sum of GTIs [s]
caldbver	4.5.1.1	 	ontime2	48963.503621817	Sum of GTIs [s]
date	2012-09-11T03:01:26	Date and time of file creation	ontime3	48966.726732194	Sum of GTIs [s]
revision	1	Processing version of data	ontime6	48960.485761821	Sum of GTIs [s]
			ontime7	48966.808812201	Sum of GTIs [s]
			ontime8	48960.403701723	Sum of GTIs [s]
			l1events	1467569	Number of level 1 events

2.1.4 Events

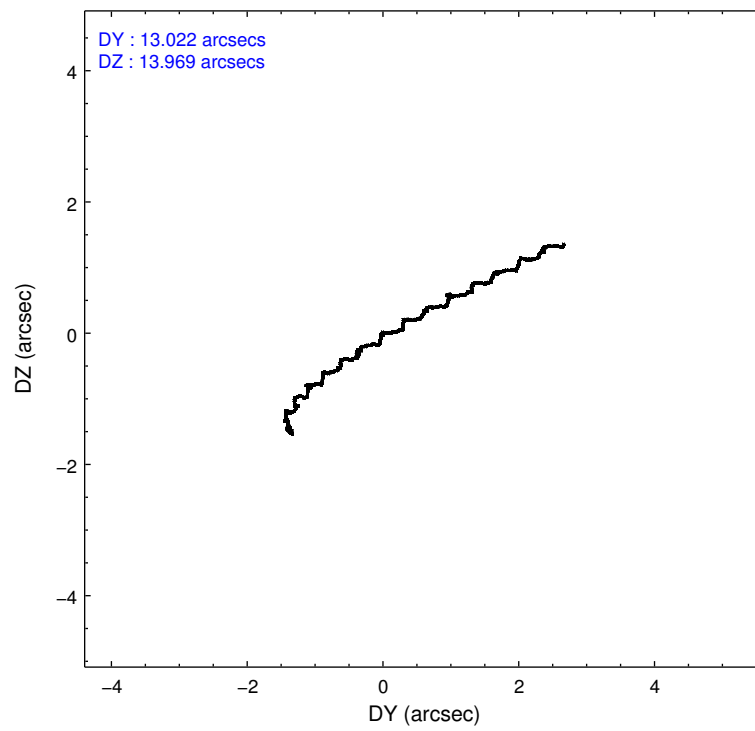
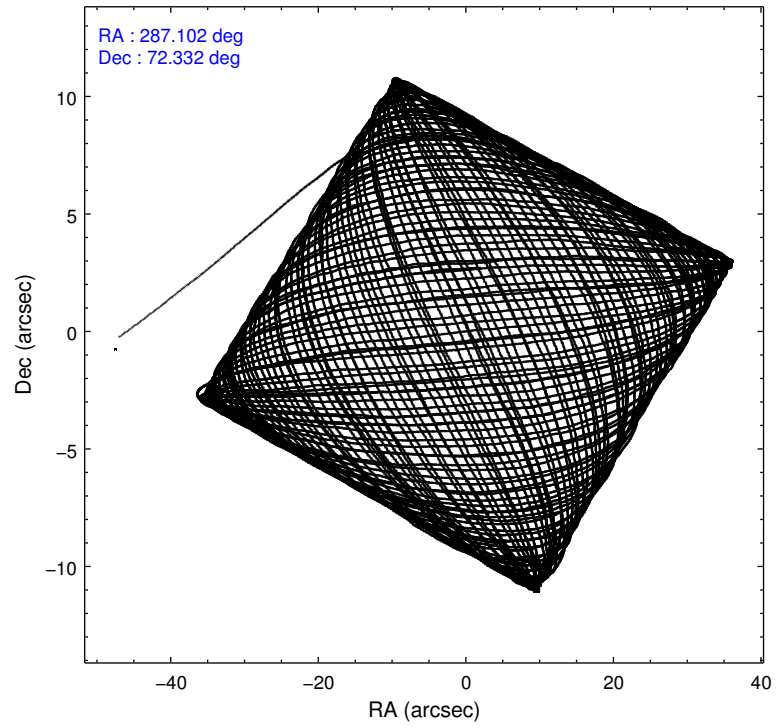
	ccd 2	ccd 3	ccd 6	ccd 7	ccd 8
level 1 events	250782	251913	258823	343405	362646
rejected events	221060	223169	225682	192639	255578
rejected %	88%	88%	87%	56%	70%

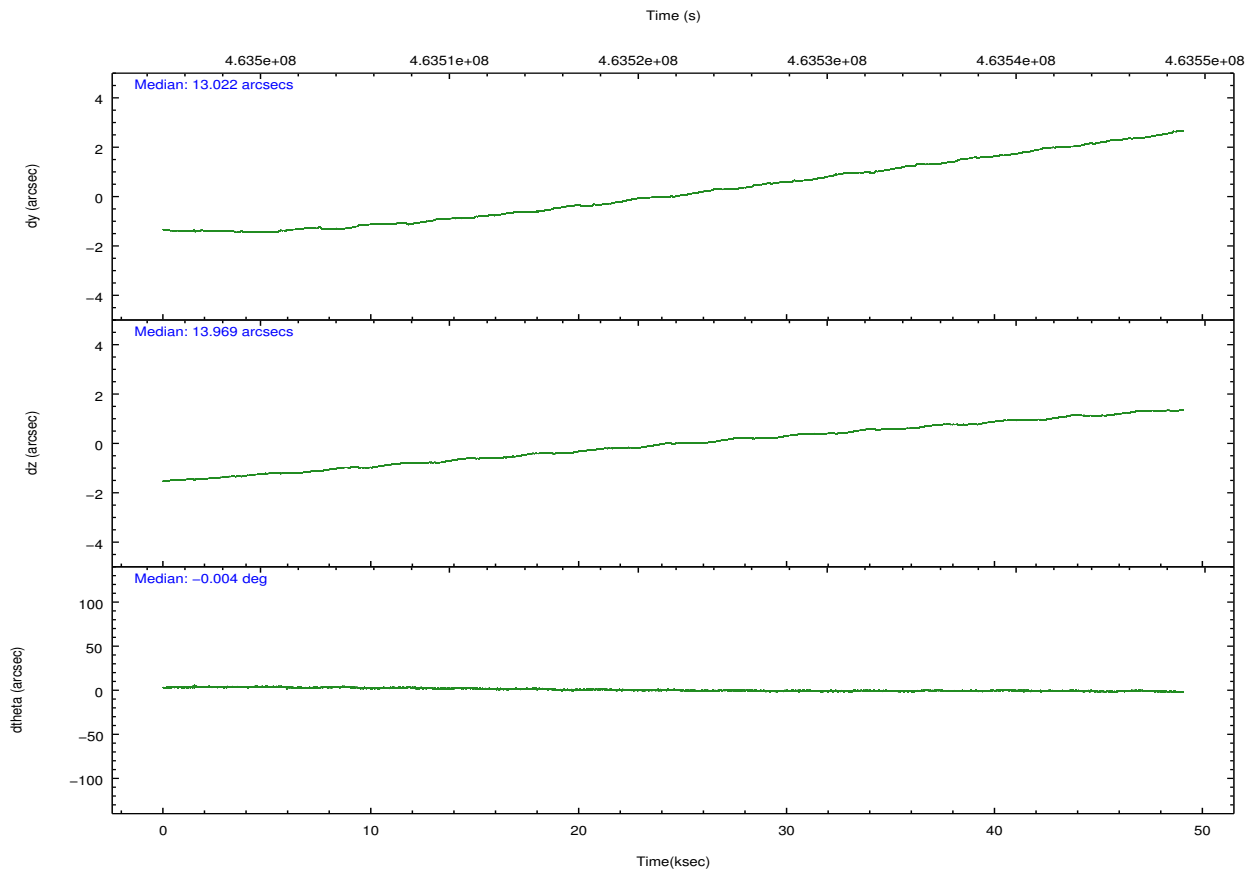
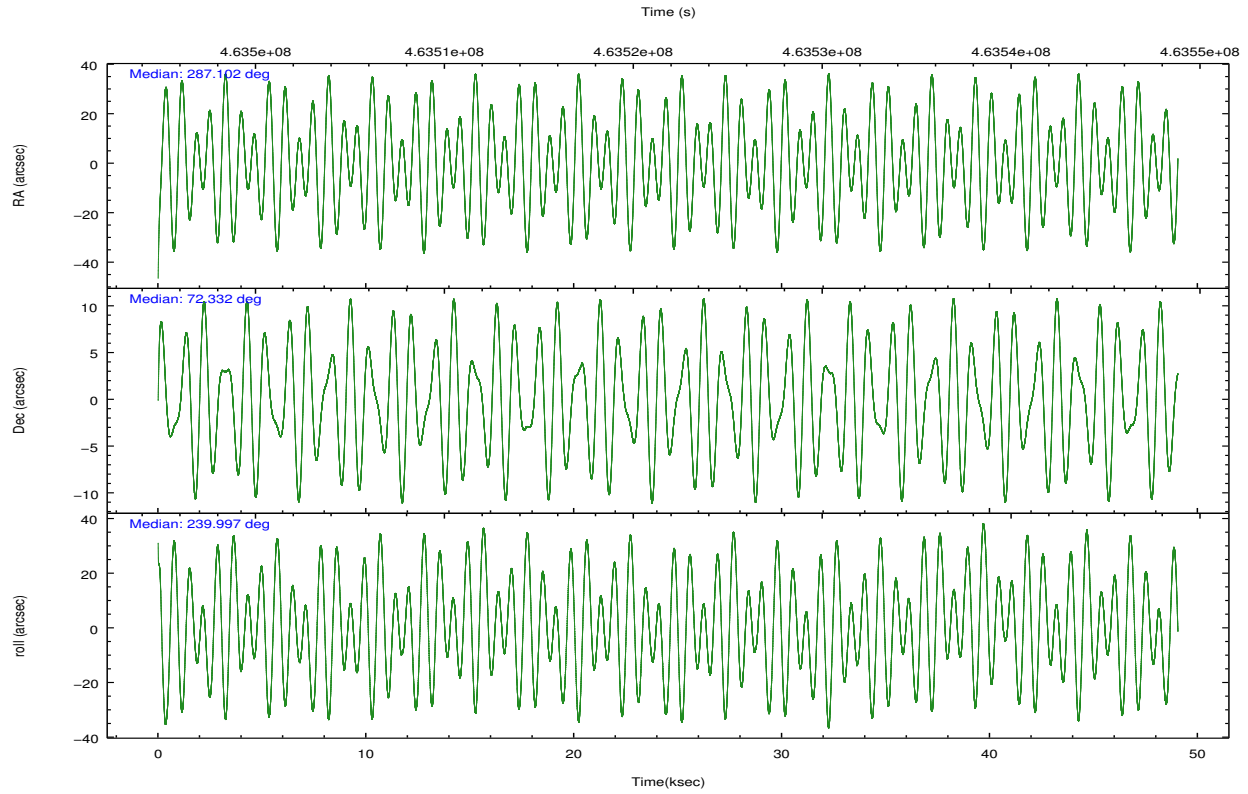
	ccd 2	ccd 3	ccd 6	ccd 7	ccd 8
grade 0 events	10880	9982	12380	13302	33120
	4%	3%	4%	3%	9%
grade 1 events	166	165	185	378	299
	0%	0%	0%	0%	0%
grade 2 events	7096	6647	7331	30805	22635
	2%	2%	2%	8%	6%
grade 3 events	2972	3069	3167	12987	12818
	1%	1%	1%	3%	3%
grade 4 events	3011	3003	3131	12960	12229
	1%	1%	1%	3%	3%
grade 5 events	11005	13269	13314	35280	19270
	4%	5%	5%	10%	5%
grade 6 events	5764	6046	7140	80728	26337
	2%	2%	2%	23%	7%
grade 7 events	209888	209732	212175	156965	235938
	83%	83%	81%	45%	65%

2.2 Compared Parameters

Parameter	Planned	Actual	Parameter	Planned	Actual
Instrument	ACIS	ACIS	Obspar format version number	7	7
Detector	ACIS-23678	ACIS-23678	Obspar file type	PREDICTED	ACTUAL
Grating	NONE	NONE	Obspar update status	NONE	UPDATED
Data mode	VFAINT	VFAINT	CCD I0 on	N	N
Observation mode	POINTING	POINTING	CCD I1 on	N	N
[deg] Pointing RA	287.100899	287.1020733333334	CCD I2 on	O1	Y
[deg] Pointing Dec	72.359360	72.33201433722701	CCD I3 on	O2	Y
[deg] Pointing Roll	239.837662	239.9931631982326	CCD S0 on	N	N
[mm] SIM focus pos	-0.684267	-0.6828225247311905	CCD S1 on	N	N
[mm] SIM defocus	0	0.001444936568705701	CCD S2 on	Y	Y
[mm] SIM translation stage pos	-190.132523	-190.1400660498719	CCD S3 on	Y	Y
[mm] SIM translation stage offset	0	0.00754346686406393	CCD S4 on	Y	Y
[s] Observation start time (MET)	463497478.184000	463496250.82238	CCD S5 on	N	N
Observation start date	2012-09-08T13:16:51	2012-09-08T12:57:30	Number of optional ACIS chips dropped	0	0
[s] Observation end time (MET)	463546378.184000	463546930.9251	On-chip summing requested	N	N
Observation end date	2012-09-09T02:51:51	2012-09-09T03:02:10	Subarray requested	NONE	NONE
Read mode	TIMED	TIMED	Alternating exposures requested	N	N
			[s] Primary exposure time	0.000000	3.1

2.3 Aspect



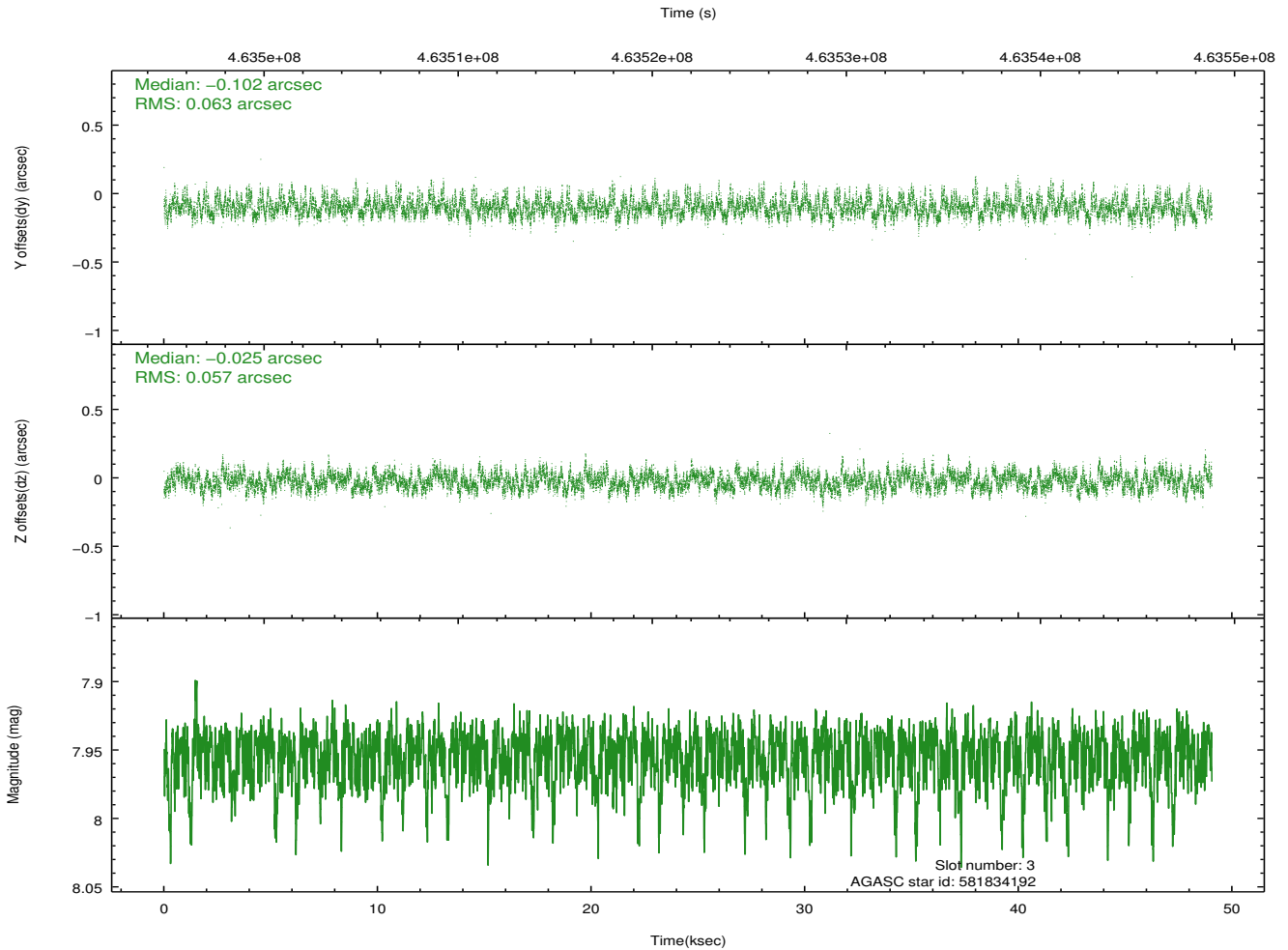
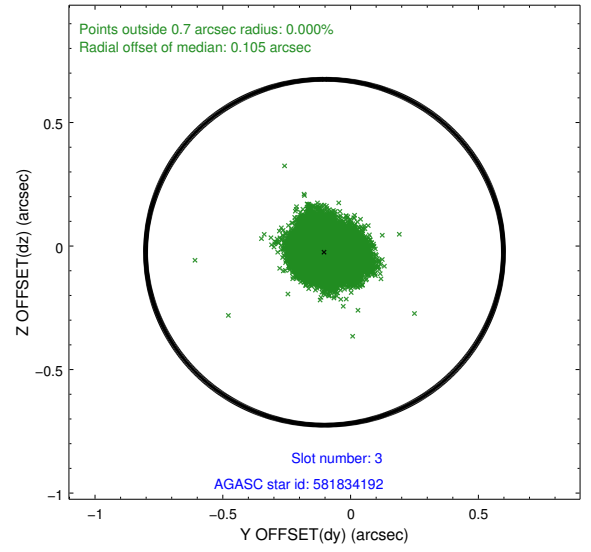
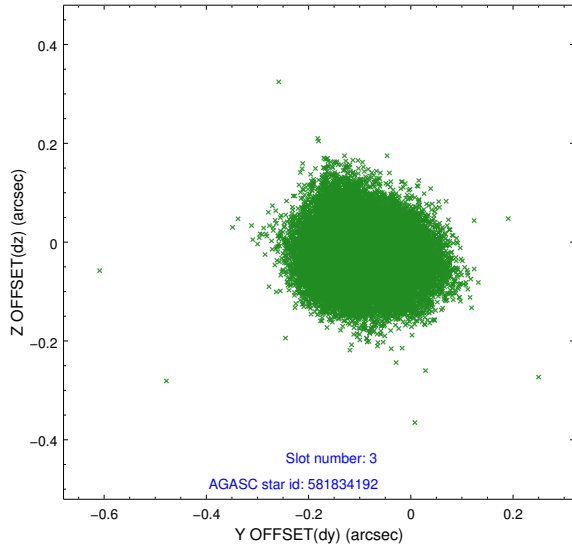


Slot Statistics

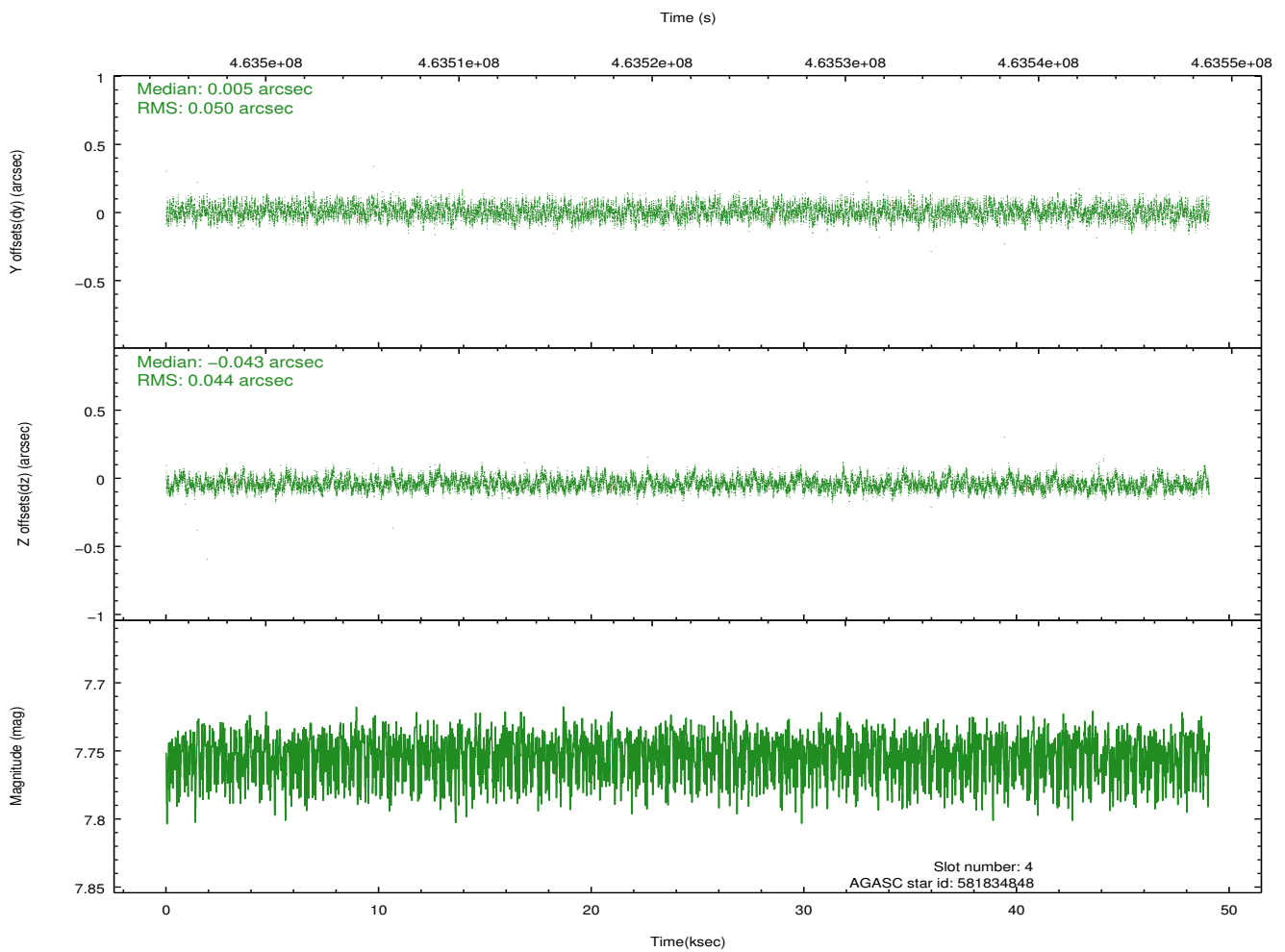
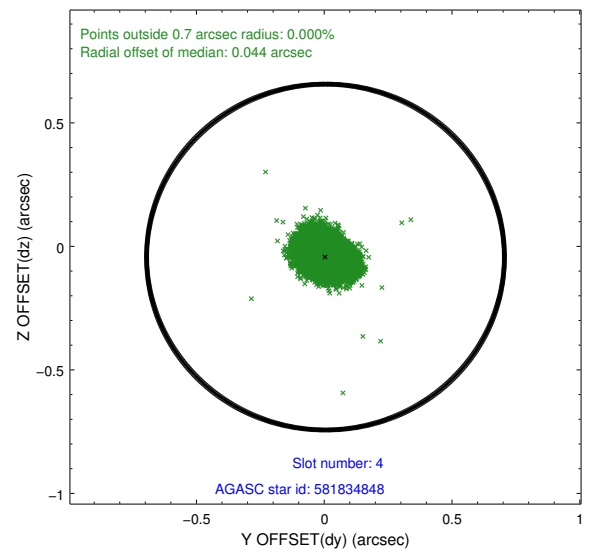
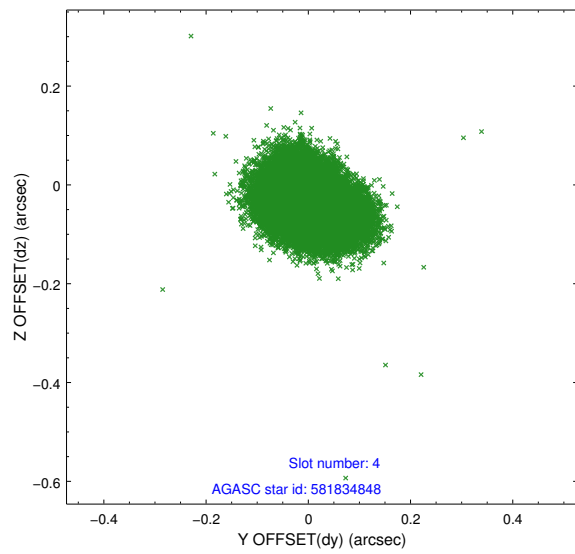
slot	status	id	mag	n_pts	med_dy	med_dz	dr1	dr2	ra	dec	mean_y	mean_z
0	FID	ACIS-S-2	6.99	11960	-0.057	-0.047	0.035	0.079	0.000000	0.000000	-766.22	-1735.31
1	FID	ACIS-S-4	7.08	11953	0.214	0.041	0.052	0.077	0.000000	0.000000	2147.36	173.28
2	FID	ACIS-S-5	7.12	11957	-0.174	0.017	0.040	0.058	0.000000	0.000000	-1819.19	166.89
3	GUIDE	581834192	7.95	23903	-0.102	-0.025	0.091	0.144	286.985382	72.267064	351.02	57.58
4	GUIDE	581834848	7.75	23895	0.005	-0.043	0.072	0.111	287.456564	72.243308	164.37	547.16
5	GUIDE	581836384	8.84	23849	-0.007	-0.001	0.092	0.143	287.591126	72.108969	505.22	920.83
6	GUIDE	583538280	9.41	23787	-0.075	-0.085	0.122	0.203	288.289252	72.902006	-2331.50	99.69
7	GUIDE	581828856	9.61	23901	0.177	0.161	0.100	0.161	287.499647	73.017483	-2260.03	-828.08

2.4 Star Slots

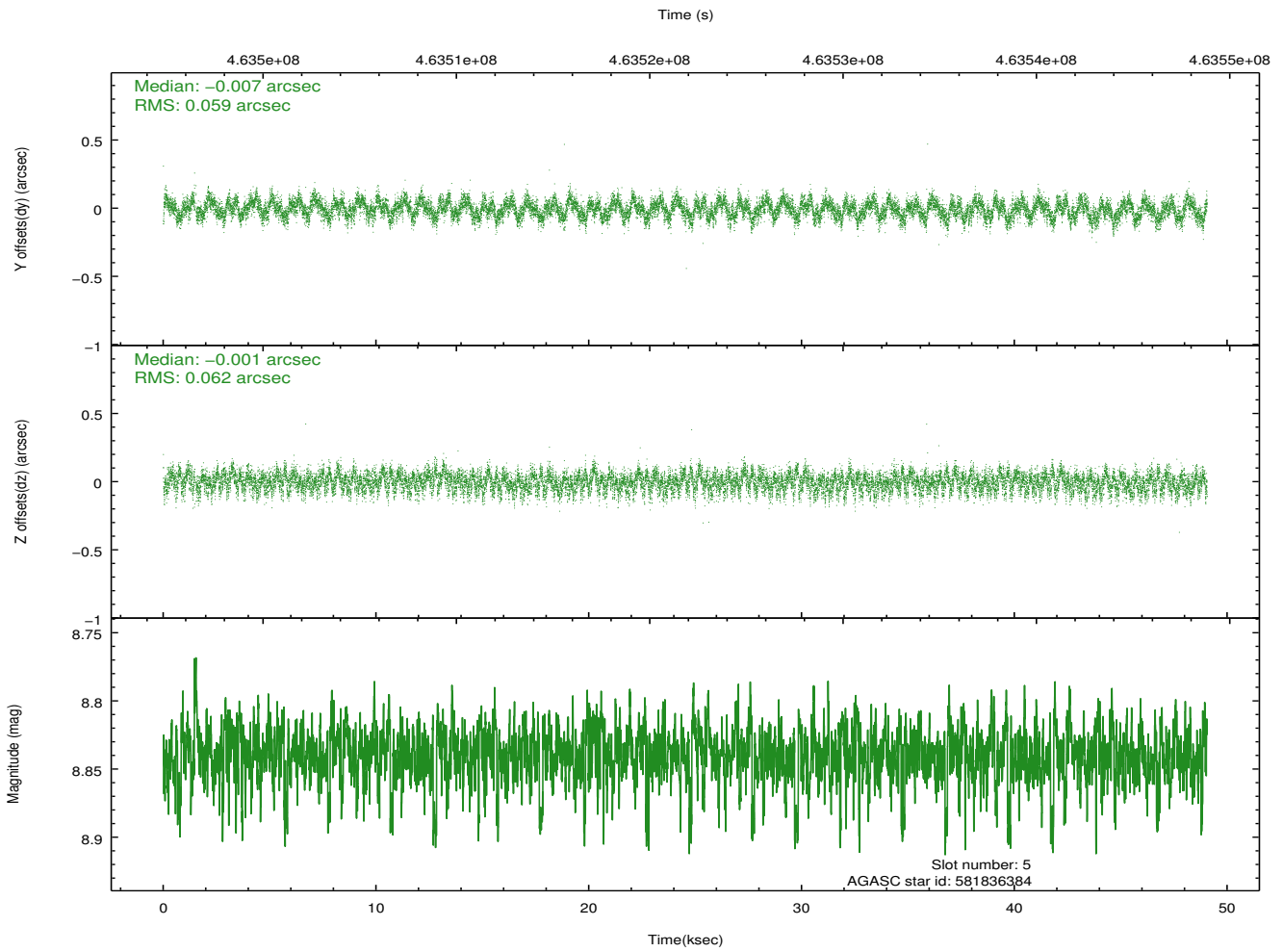
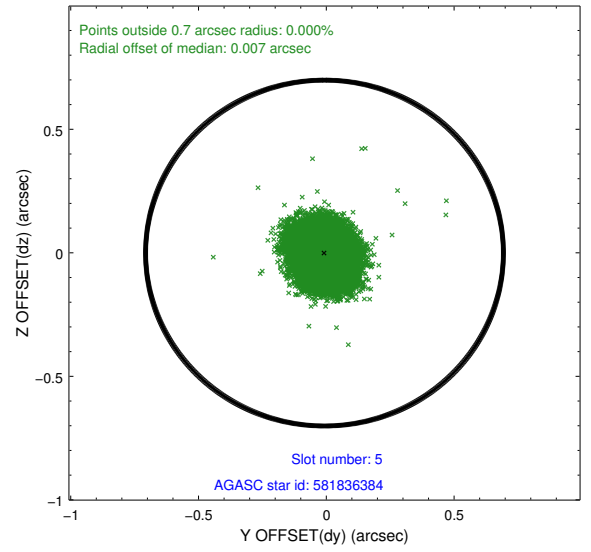
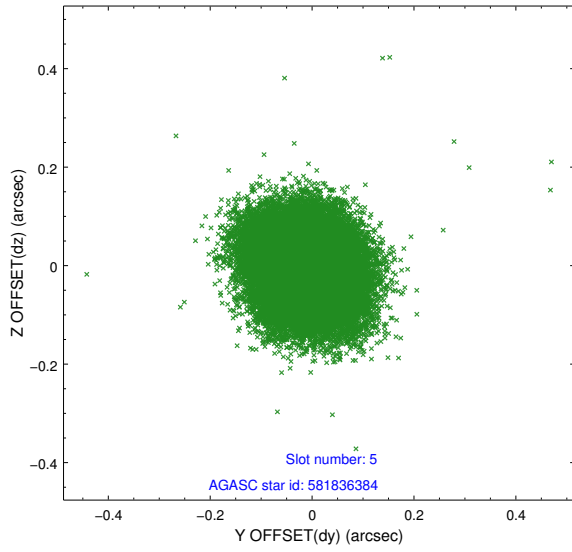
2.4.1 Slot 3



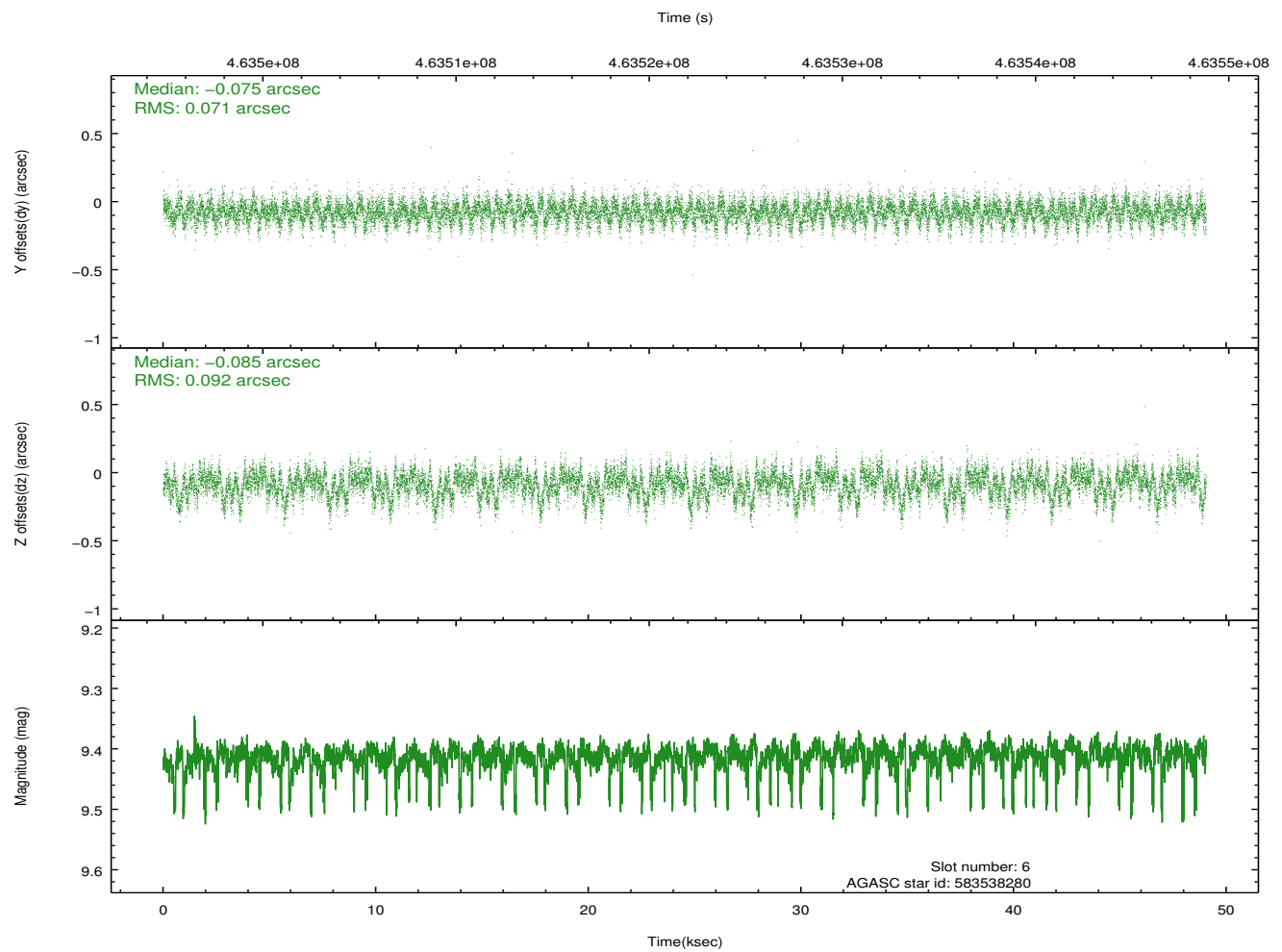
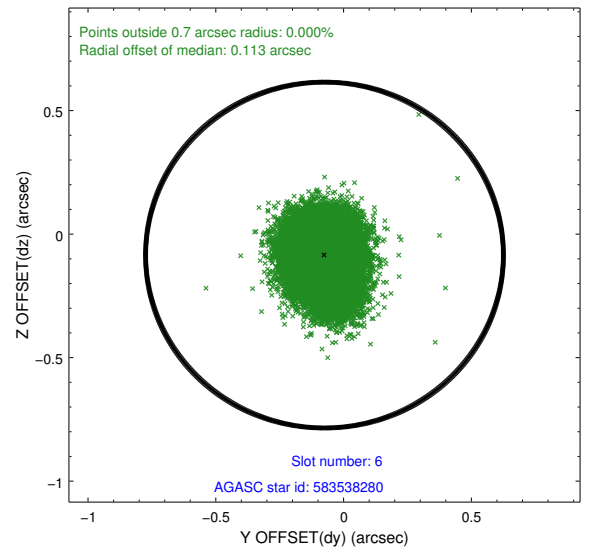
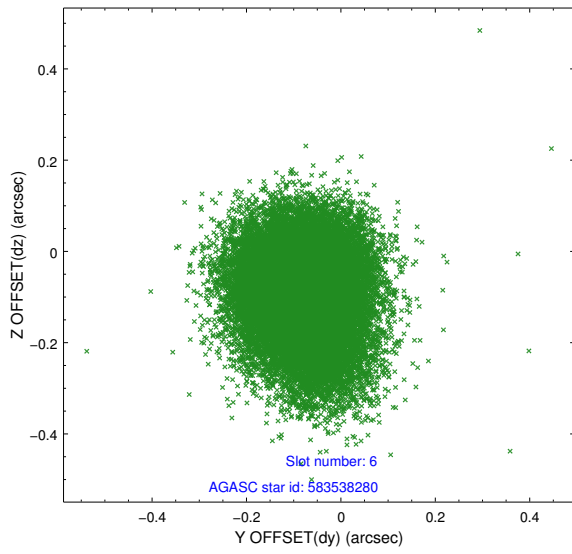
2.4.2 Slot 4



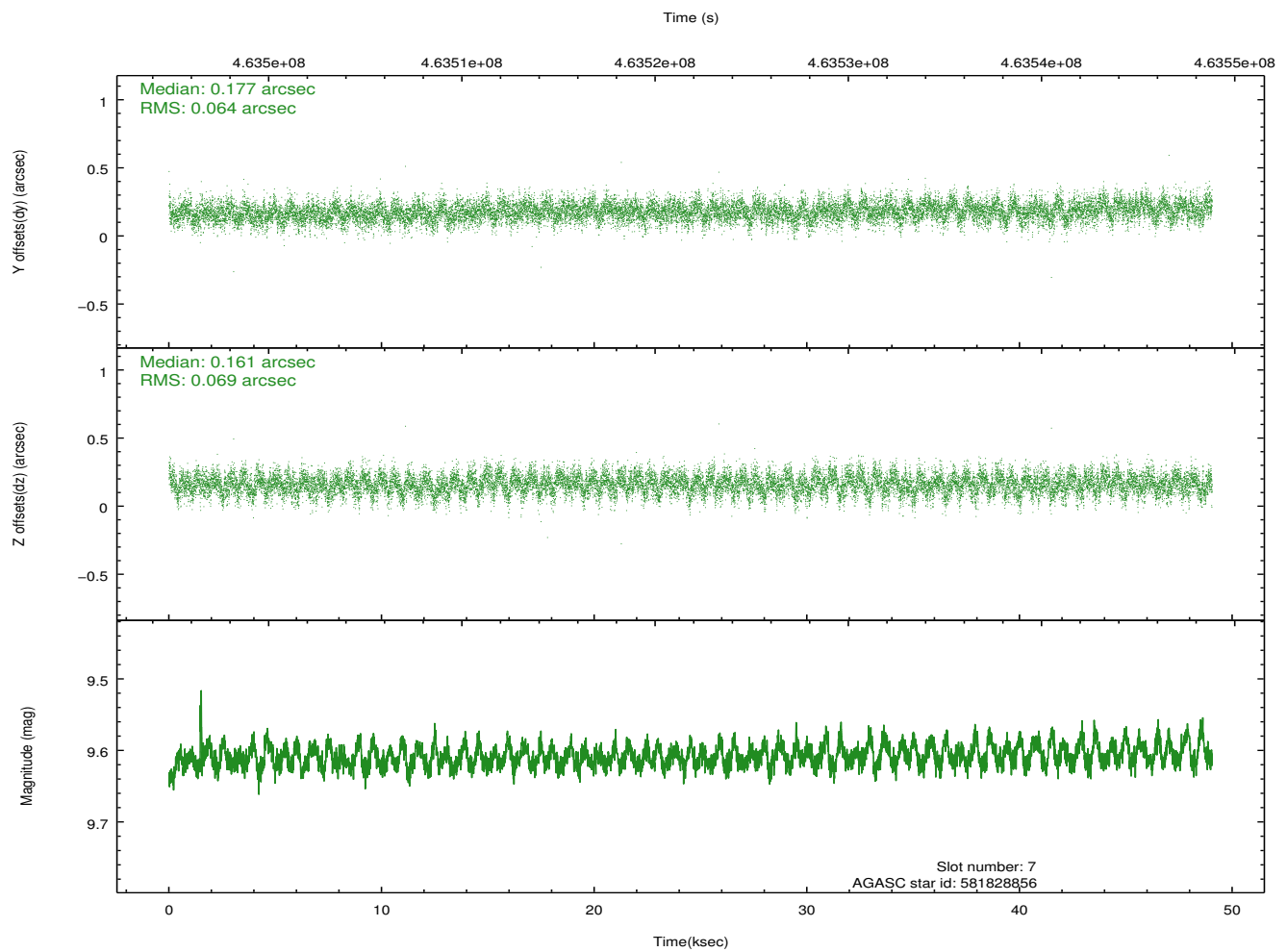
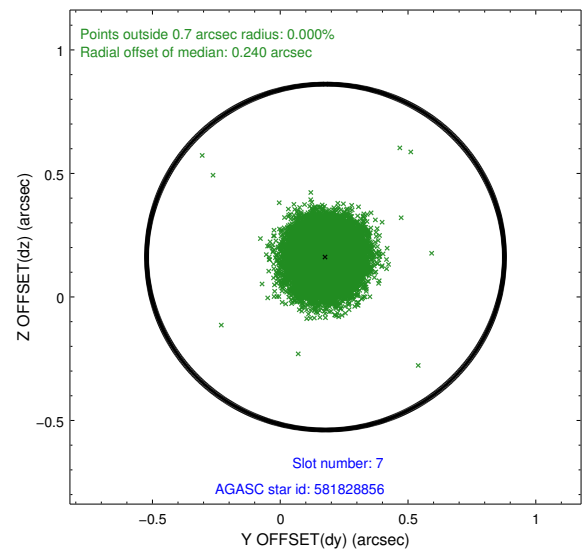
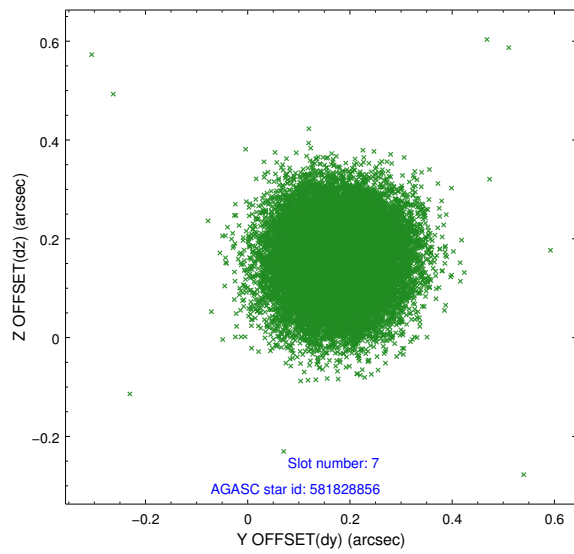
2.4.3 Slot 5



2.4.4 Slot 6

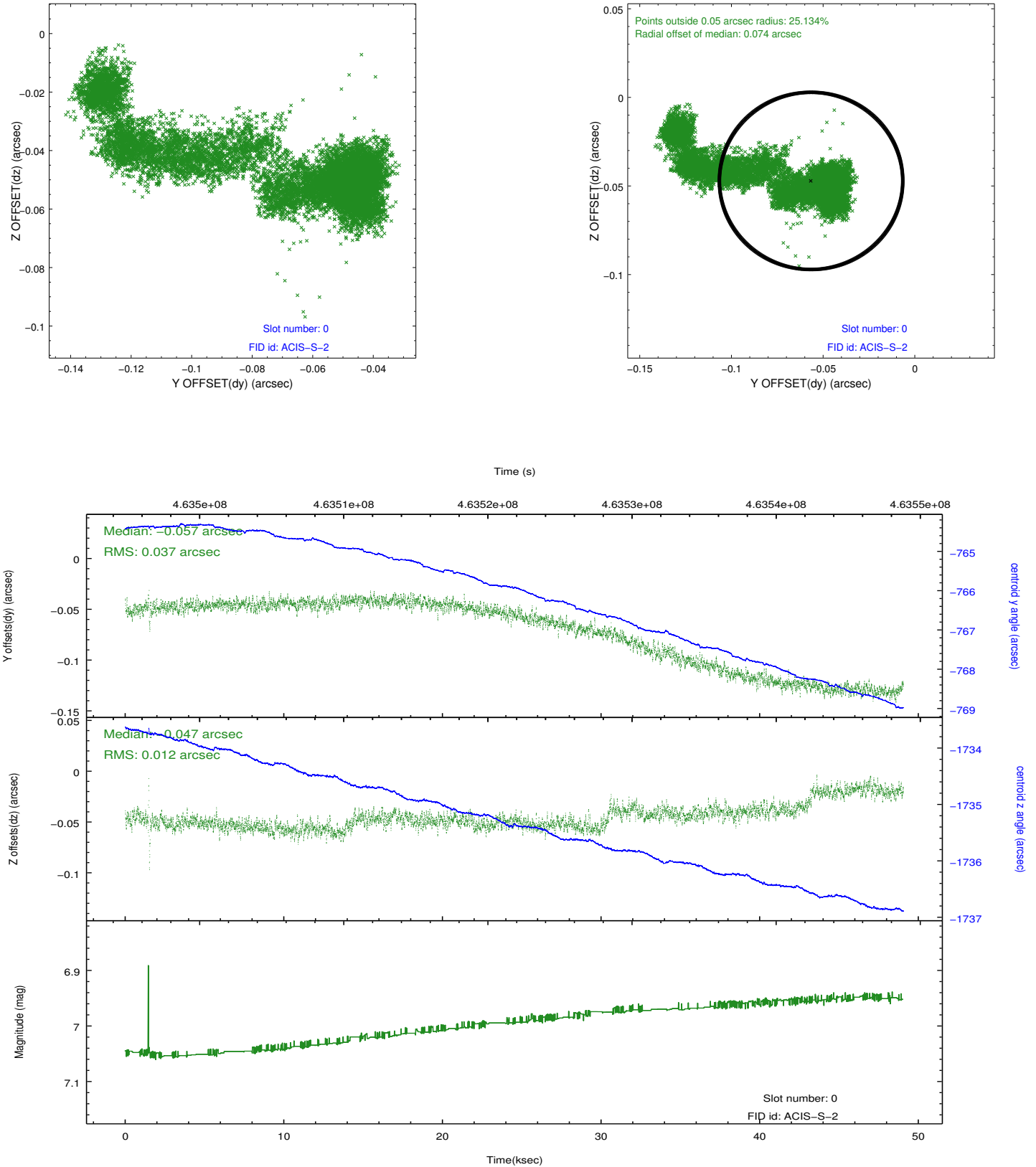


2.4.5 Slot 7

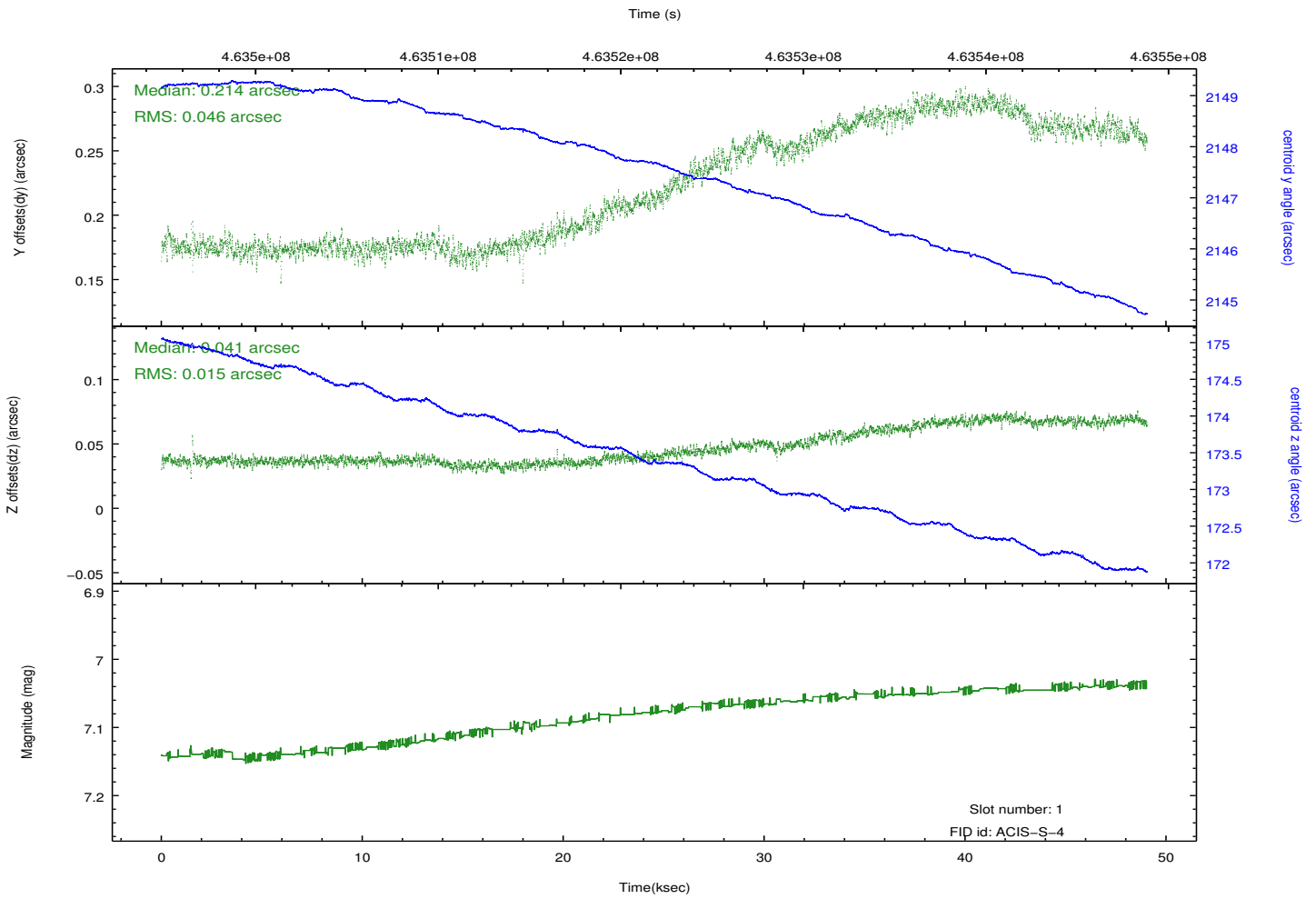
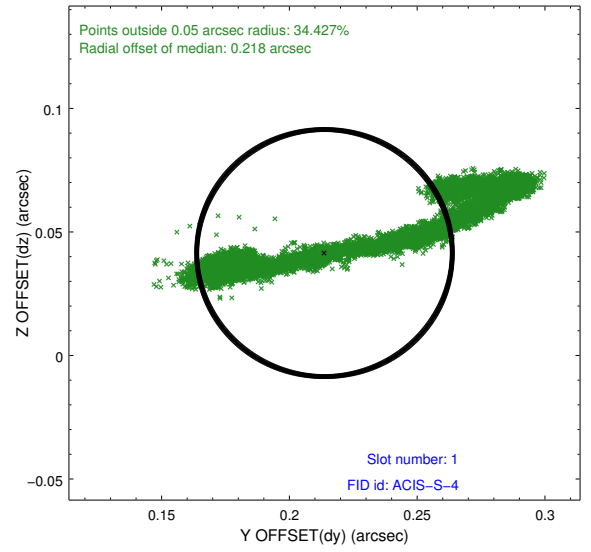
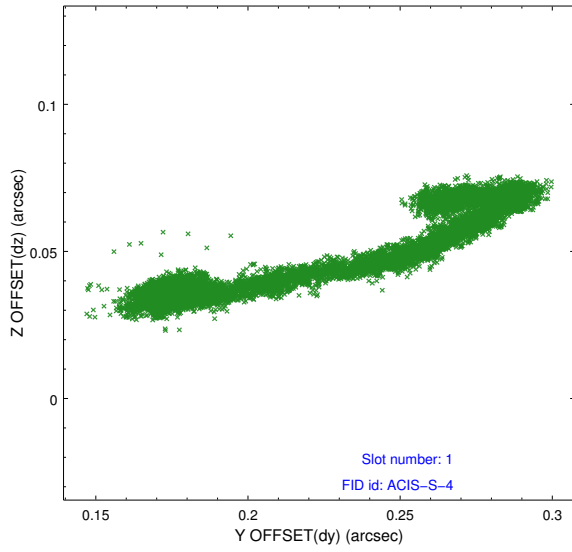


2.5 FID Slots

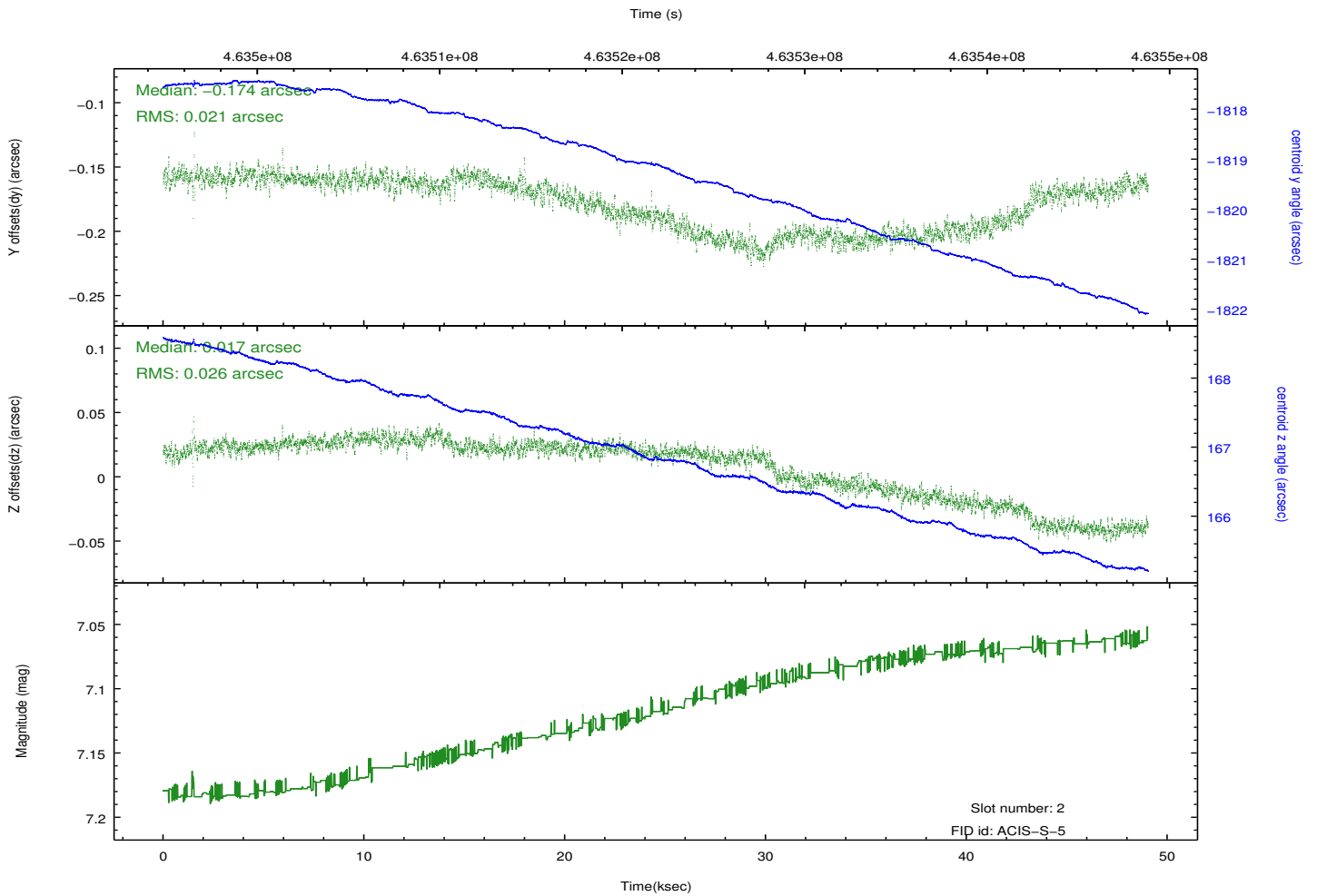
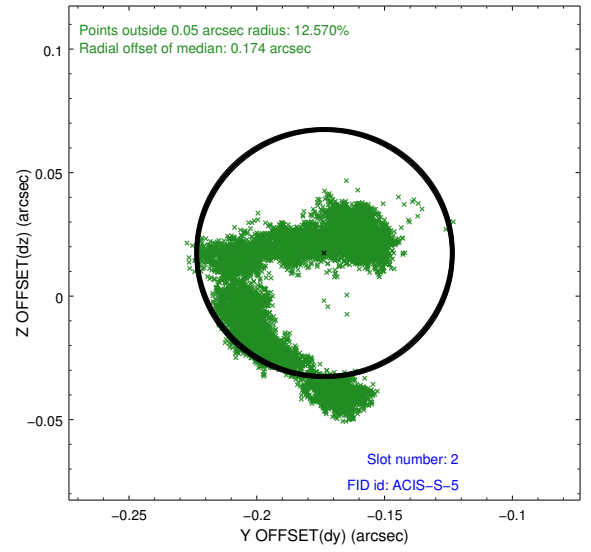
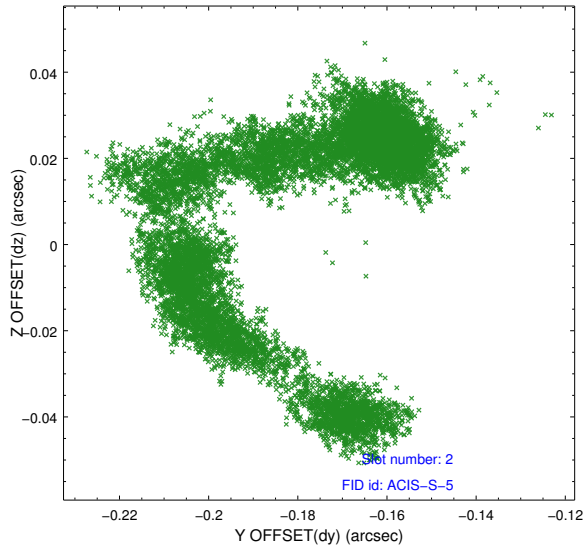
2.5.1 Slot 0



2.5.2 Slot 1



2.5.3 Slot 2



A Summary

A.1 Status

V&V Scientist	Joy Nichols
V&V Date (YYYY-MM-DD)	2012.09.13
V&V Edition	1
V&V Disposition and Status	OK
V&V Charge Time	48.966808812201

A.2 Comments