

V&V Reference Report

L2 ASCDS Version : 8.1.1

Observation 1406 - L2 Version 5
Chandra X-Ray Center

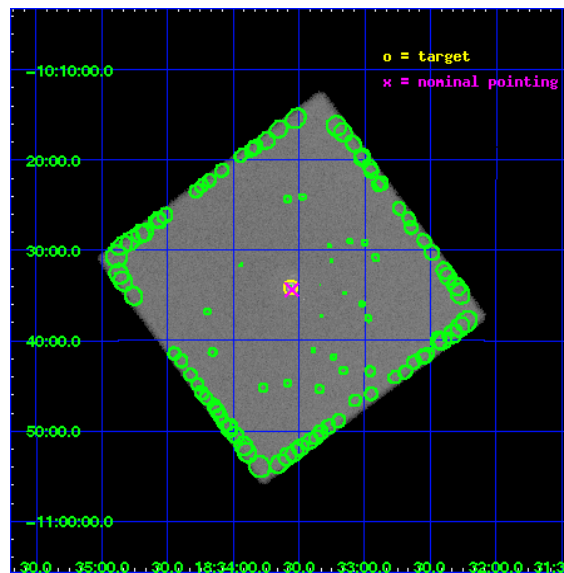
L2 Processing Date : Nov 20 2009

Contents

1	Front	2
2	OBI	3
2.1	OBI	3
2.1.1	Images	3
2.1.2	Parameters	4
2.1.3	Events	4
2.2	Compared Parameters	5
2.3	Aspect	6
2.4	Star Slots	9
2.4.1	Slot 3	9
2.4.2	Slot 4	10
2.4.3	Slot 5	11
2.4.4	Slot 6	12
2.5	FID Slots	13
2.5.1	Slot 0	13
2.5.2	Slot 1	14
2.5.3	Slot 2	15
3	Point Sources	16
A	Summary	17
A.1	Status	17
A.2	Comments	17

1 Front

seq_num	580356	Sequence number
obs_id	1406	Observation id
title	HRC RESPONSE TO CONTINUUM SOURCE.	Proposal title
observer	Dr. CXC Calibration	Principal investigator
object	G21.5-0.9 [HRC-I, Offsets=0,0,0]	Source name
ra_targ	278.389583	Observer's specified target RA
dec_targ	-10.568528	Observer's specified target Dec
ra_nom	278.38834080789	Nominal RA
dec_nom	-10.573182809647	Nominal Dec
roll_nom	278.62951974442	Nominal Roll
revision	5	Processing version of data
ontime	30163.95733773	[s]
livetime	29961.924893704	Ontime multiplied by DTCOR
l2events	961714	Number of level 2 events

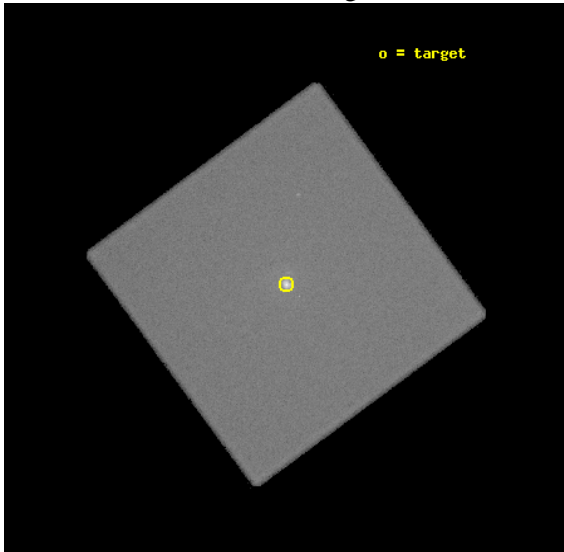


2 OBI

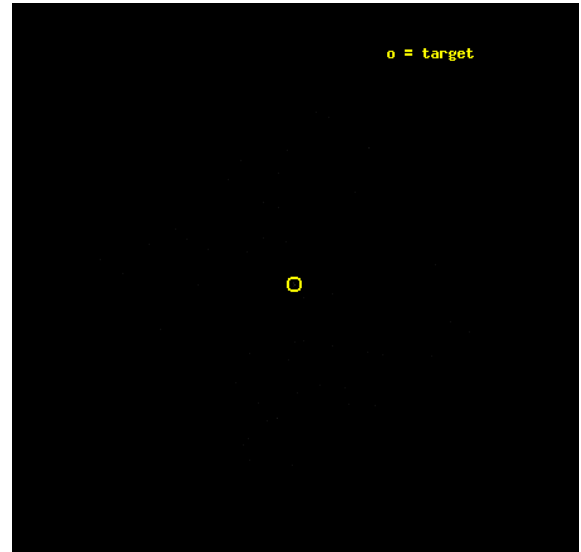
2.1 OBI

2.1.1 Images

Level 1 Image



Level 1 Bad Events



2.1.2 Parameters

obi_num	0	Obi number	sched_exp_time	30000.000000	Scheduled observation exposure time
ascdsver	8.1.1	Processing system revision	ontime	30163.95733773	[s]
caldbver	4.1.4	 	ll events	1461967	Number of level 1 events
date	2009-11-20T15:37:55	Date and time of file creation			
revision	4	Processing version of data			

2.1.3 Events

Level 1 Events

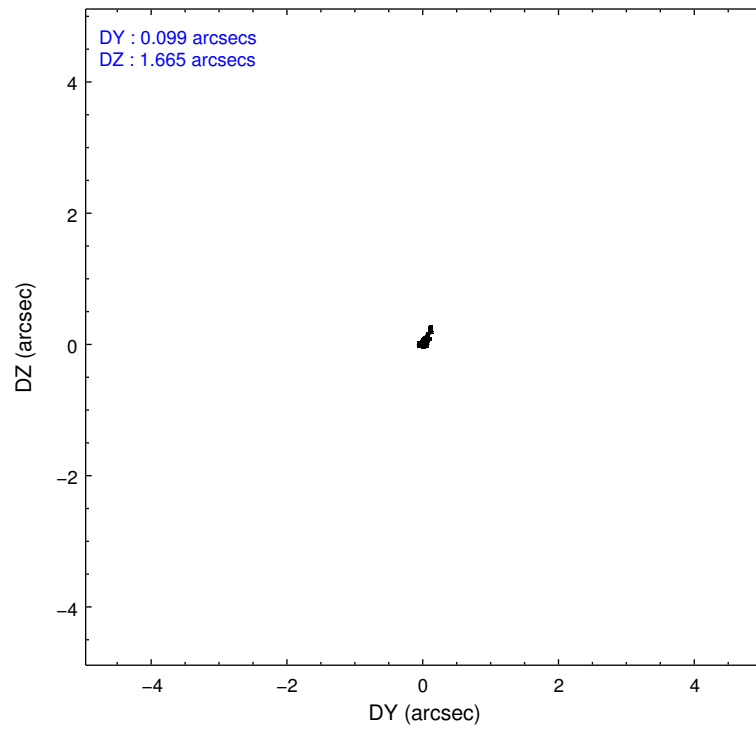
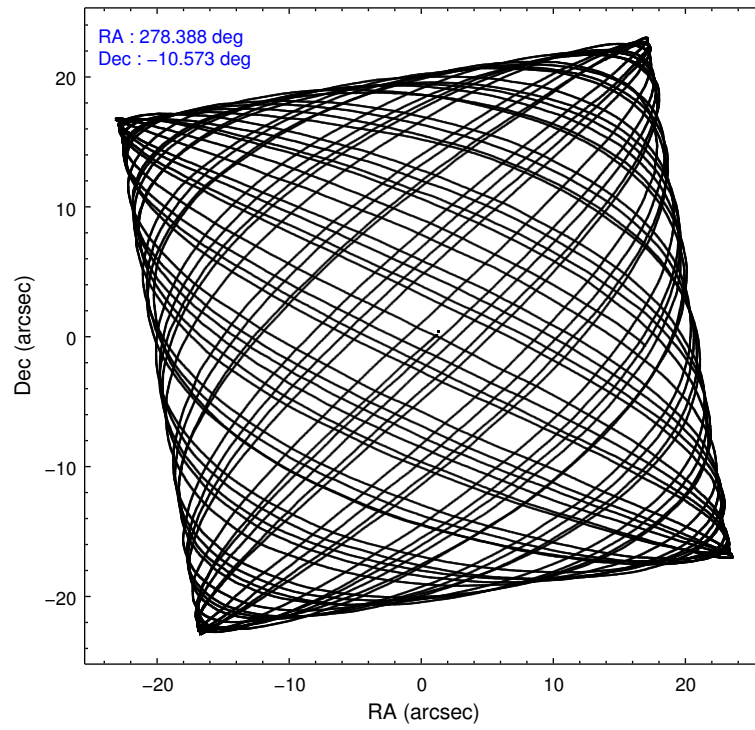
	segment 0
level 1 events	1461967
rejected events	2323
rejected %	0%

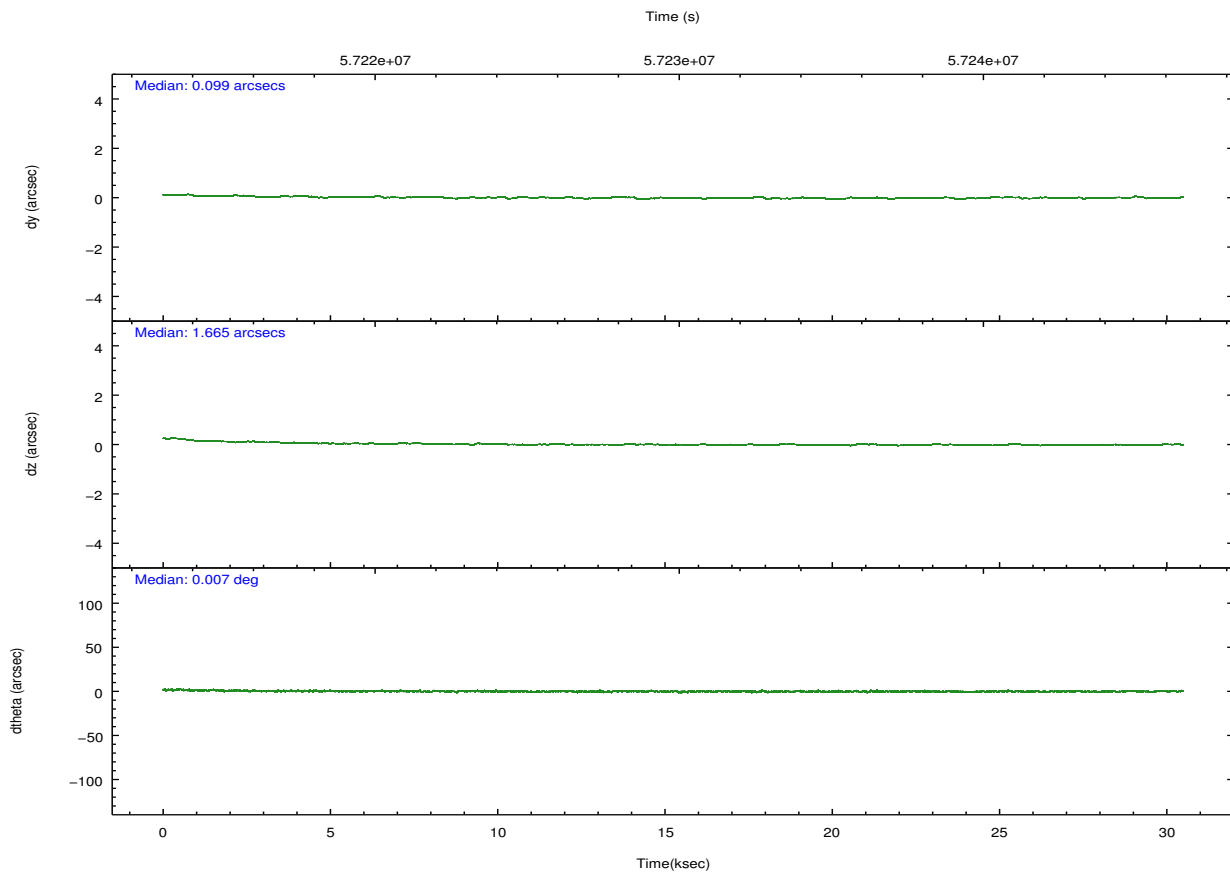
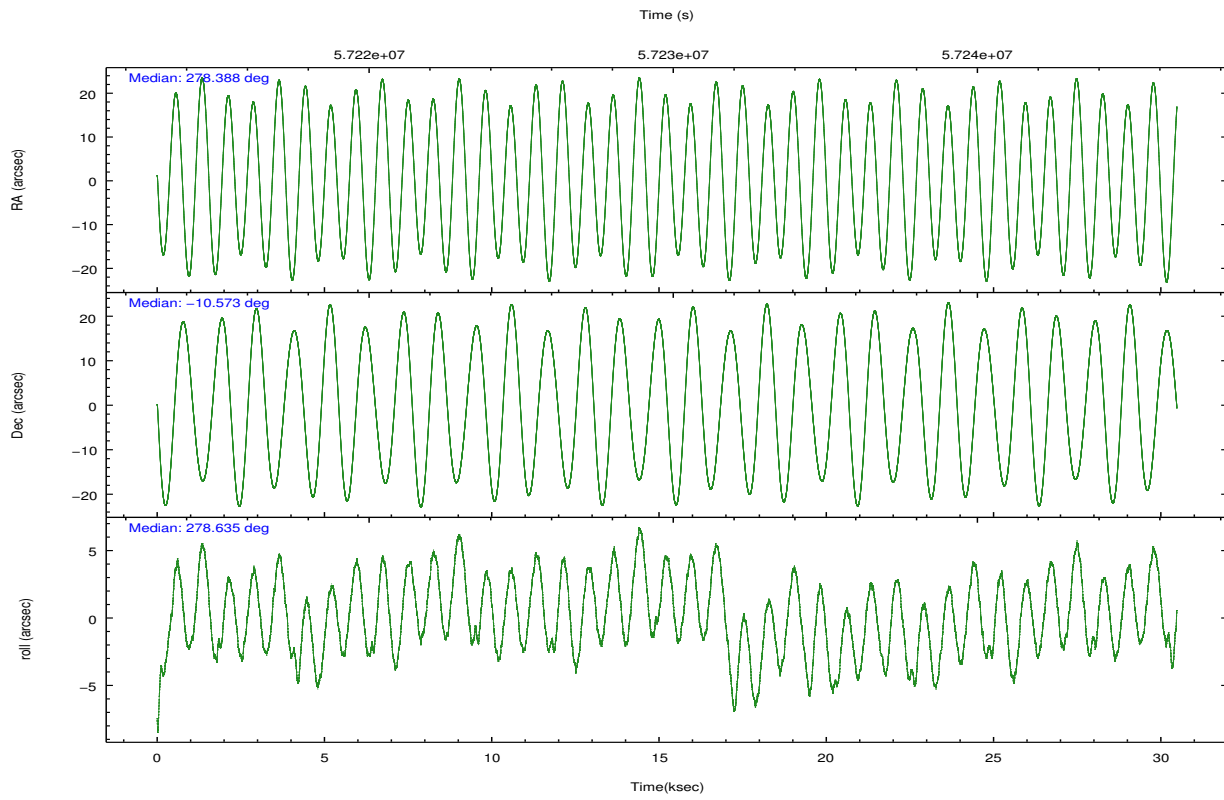
2.2 Compared Parameters

Parameter	Planned	Actual
Instrument	HRC	HRC
Detector	HRC-I	HRC-I
Grating	NONE	NONE
Data mode	OBSERVING	OBSERVING
Observation mode	POINTING	POINTING
Pointing RA	278.370849	278.388340807885
Pointing Dec	-10.551788	-10.57318280964709
Pointing Roll	278.721804	278.6295197444157
SIM focus pos (mm)	-1.040293	-1.038866356238299
SIM defocus (mm)	0	0.001426264420575141
SIM translation stage pos (mm)	126.985494	126.9854943052878
SIM translation stage offset (mm)	0	-5.413686238853188e-06
Observation start time	57215038.184000	57214344.611085
Observation start date	1999-10-25T05:02:54	1999-10-25T04:52:24
Observation end time	57245038.184000	57245937.674725
Observation end date	1999-10-25T13:22:54	1999-10-25T13:38:57

Parameter	Planned	Actual
Obspar format version number	6	6
Obspar file type	PREDICTED	ACTUAL
Obspar update status	NONE	UPDATED

2.3 Aspect



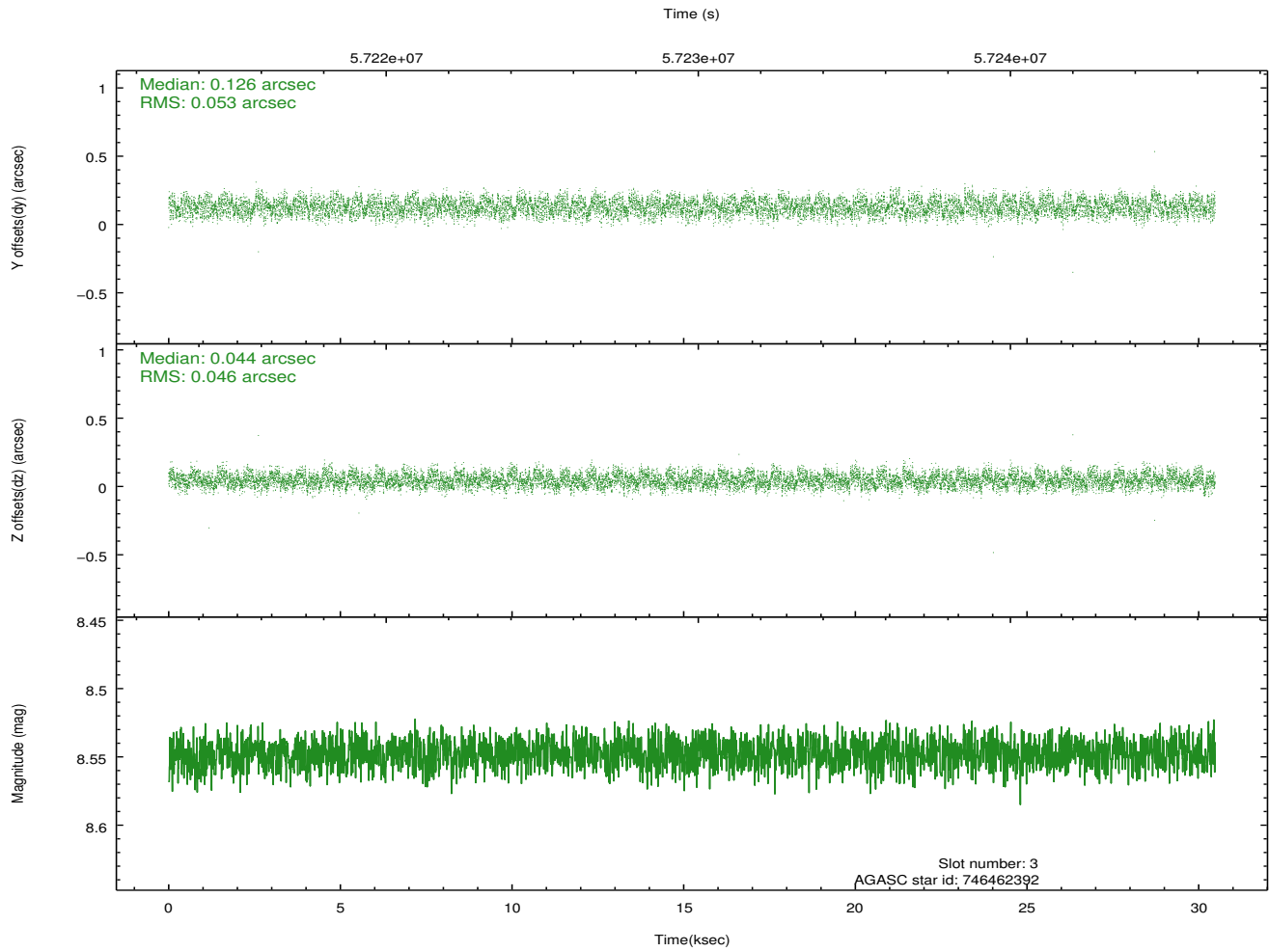
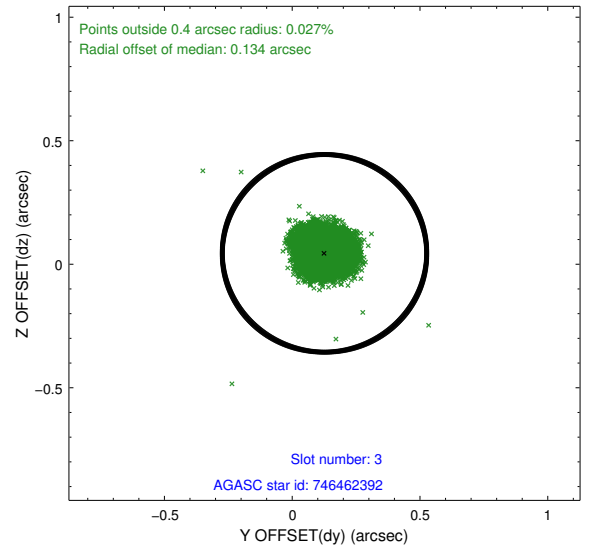
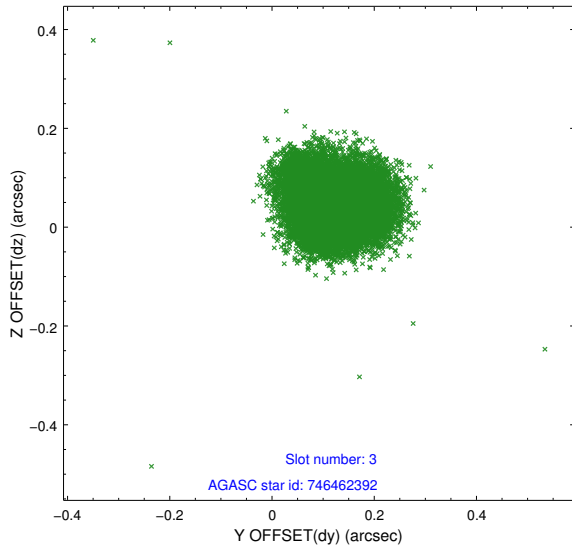


Slot Statistics

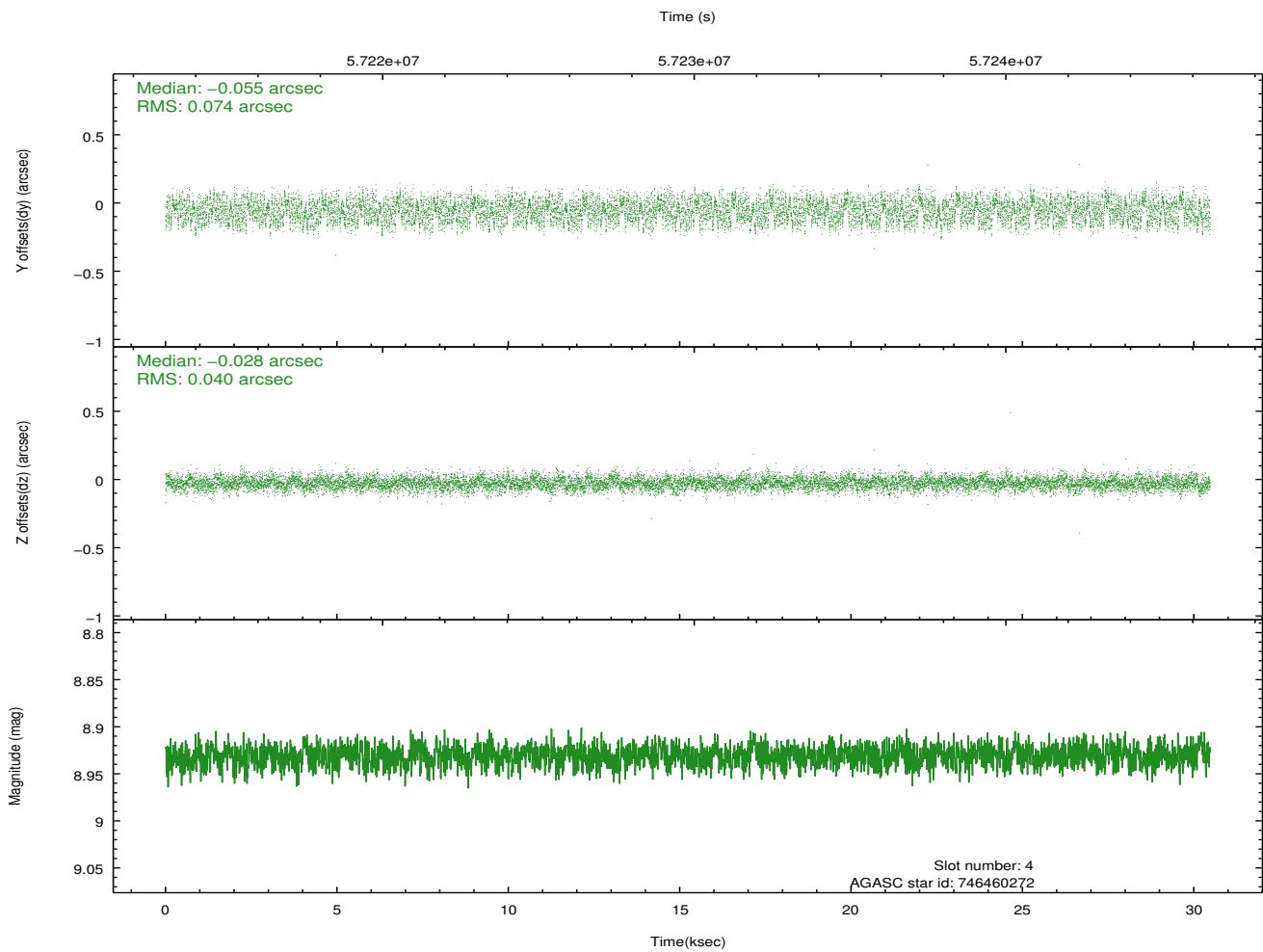
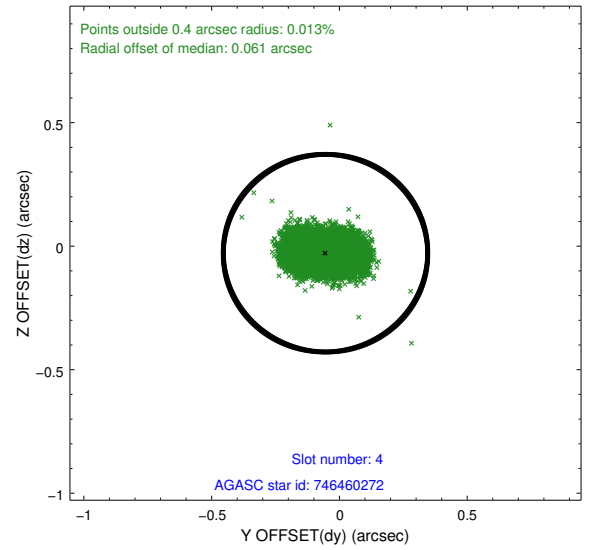
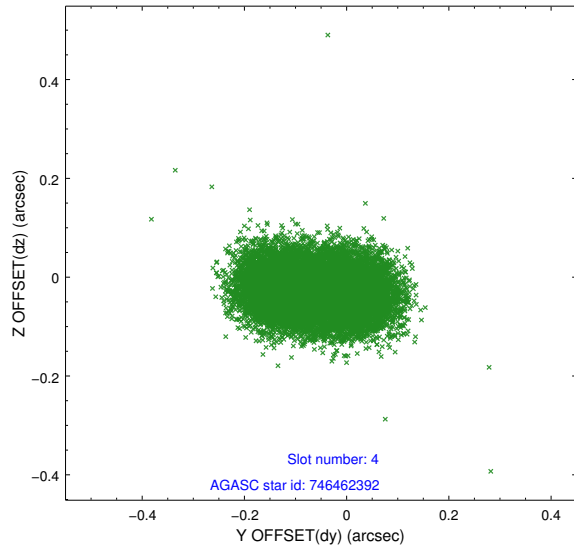
slot	status	id	mag	n_pts	med_dy	med_dz	dr1	dr2	ra	dec	mean_y	mean_z
0	FID	HRC-I-2	7.02	14870	0.061	-0.041	0.006	0.011	0.000000	0.000000	857.24	-1291.01
1	FID	HRC-I-3	7.06	14868	0.028	-0.007	0.006	0.010	0.000000	0.000000	-1183.94	1015.00
2	FID	HRC-I-4	7.00	14868	0.030	-0.039	0.007	0.012	0.000000	0.000000	1287.21	1012.81
3	GUIDE	746462392	8.55	14866	0.126	0.044	0.075	0.116	279.038421	-10.890715	1565.87	2147.93
4	GUIDE	746460272	8.93	14865	-0.055	-0.028	0.091	0.143	278.847488	-10.152127	-1165.46	1888.47
5	GUIDE	746460328	9.82	14821	-0.077	0.011	0.133	0.213	278.603974	-9.898096	-2201.43	1175.09
6	GUIDE	746461728	9.79	14767	0.007	-0.023	0.106	0.169	278.986921	-10.530755	257.12	2167.28
7	UNUSED		0.00	0	0.000	0.000	0.000	0.000	0.000000	0.000000	0.00	0.00

2.4 Star Slots

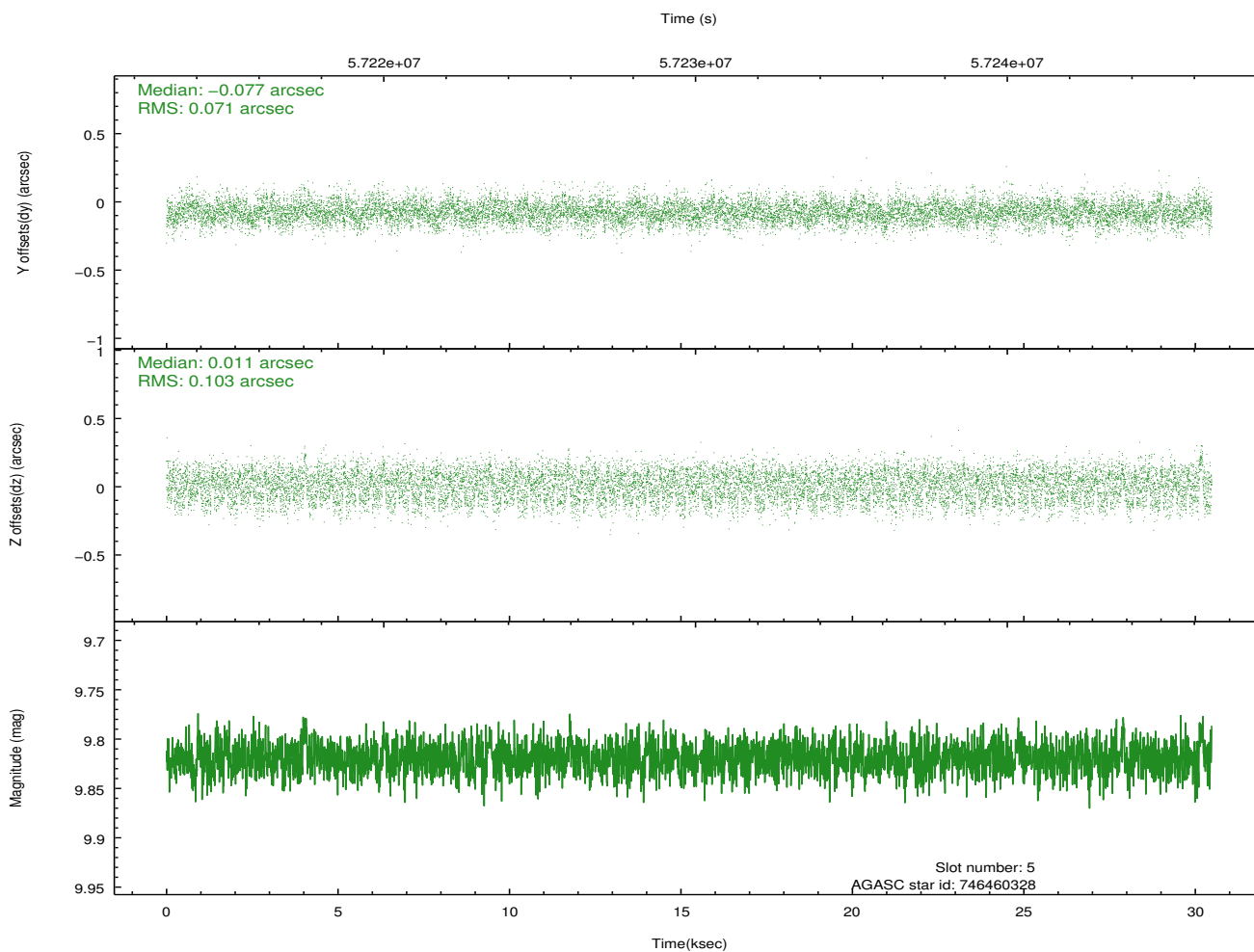
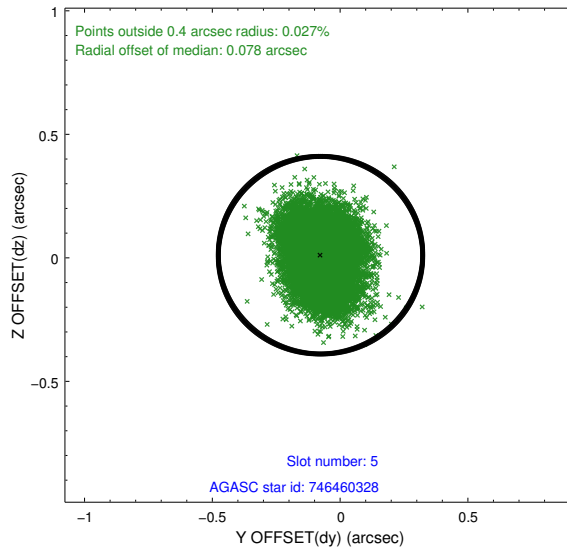
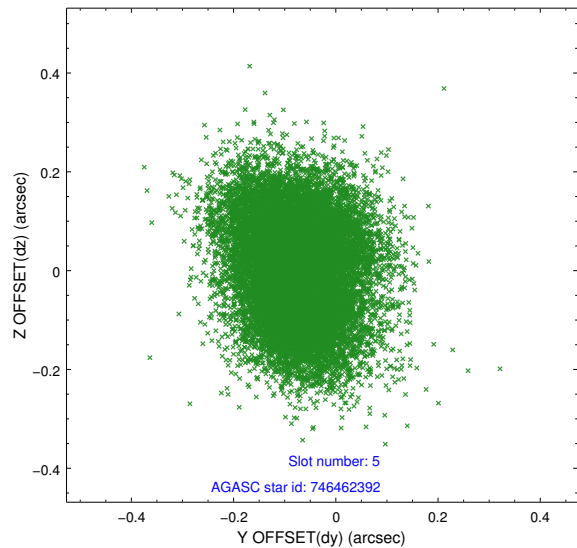
2.4.1 Slot 3



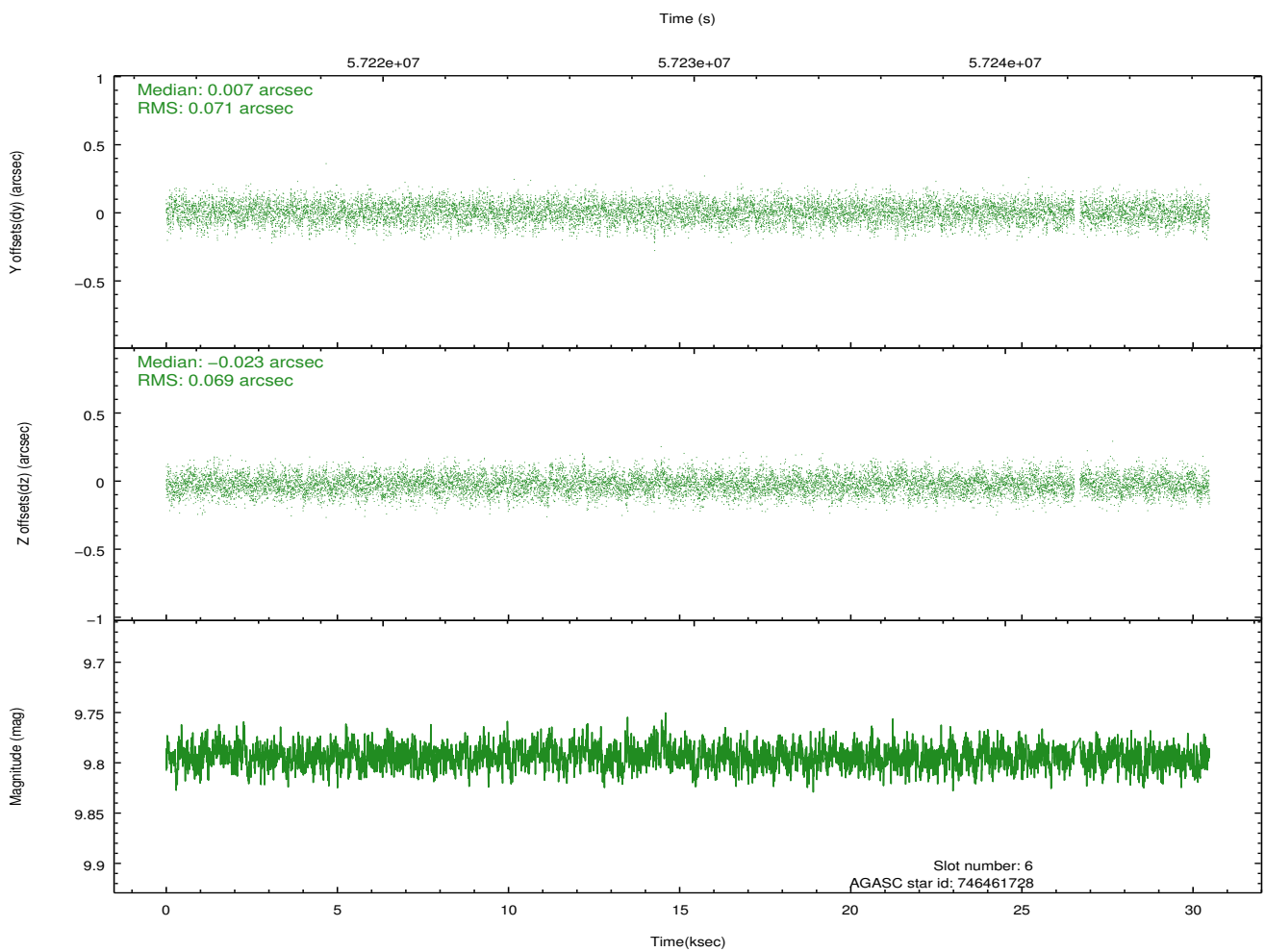
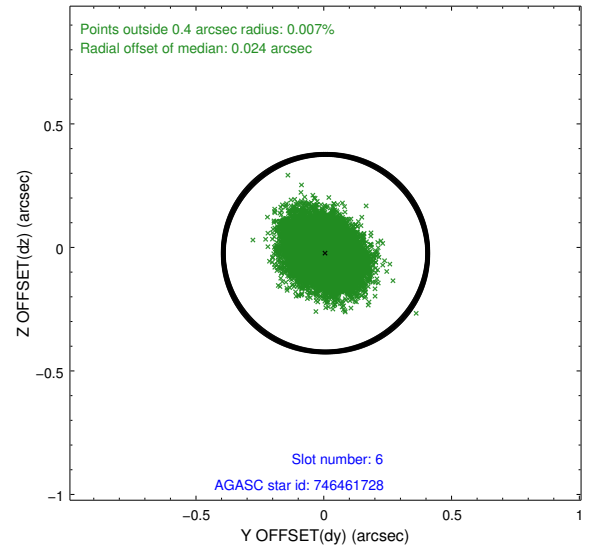
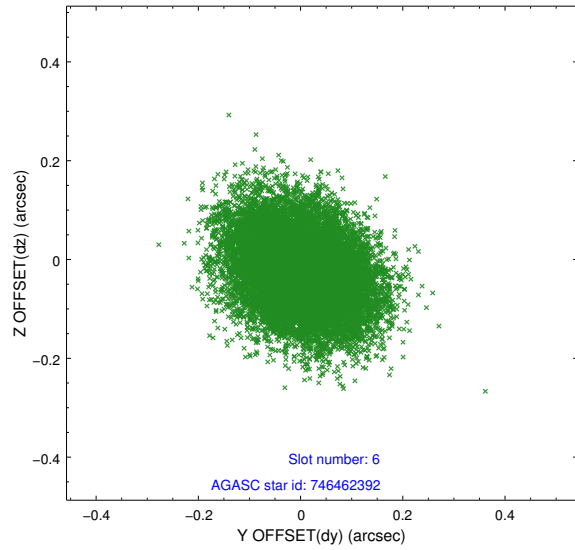
2.4.2 Slot 4



2.4.3 Slot 5

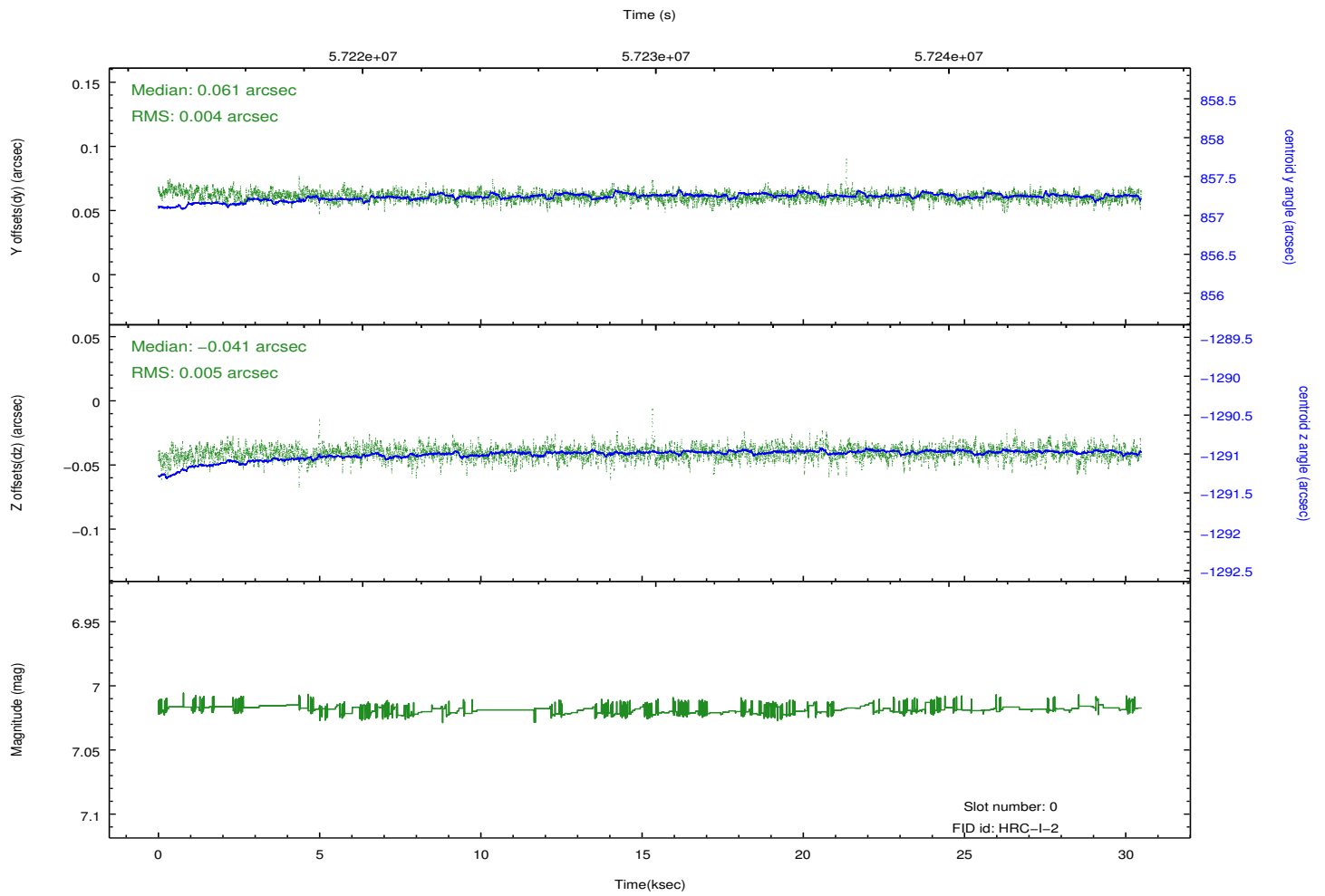
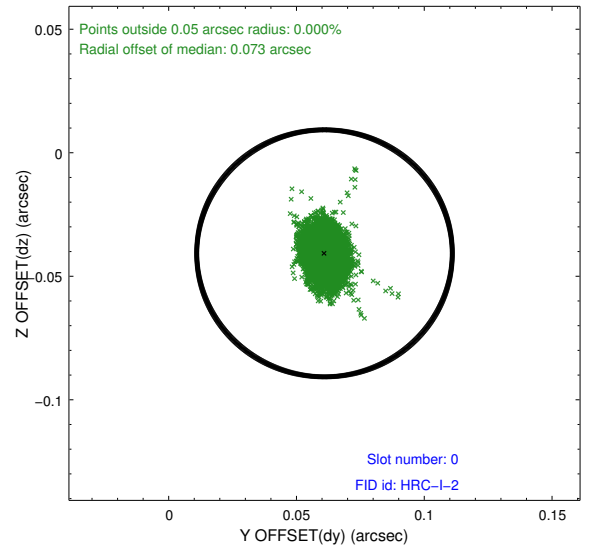
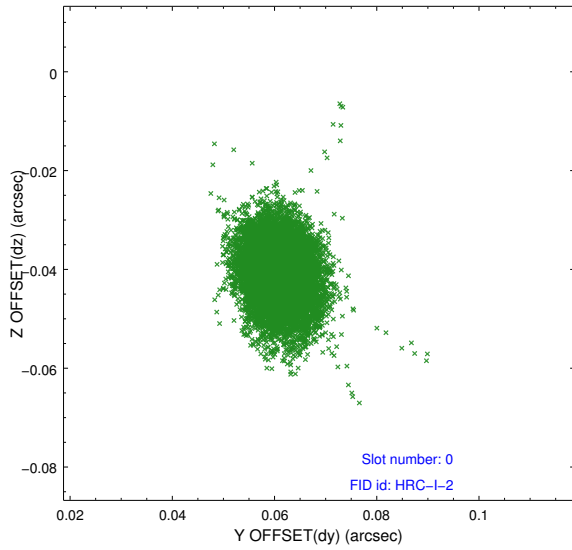


2.4.4 Slot 6

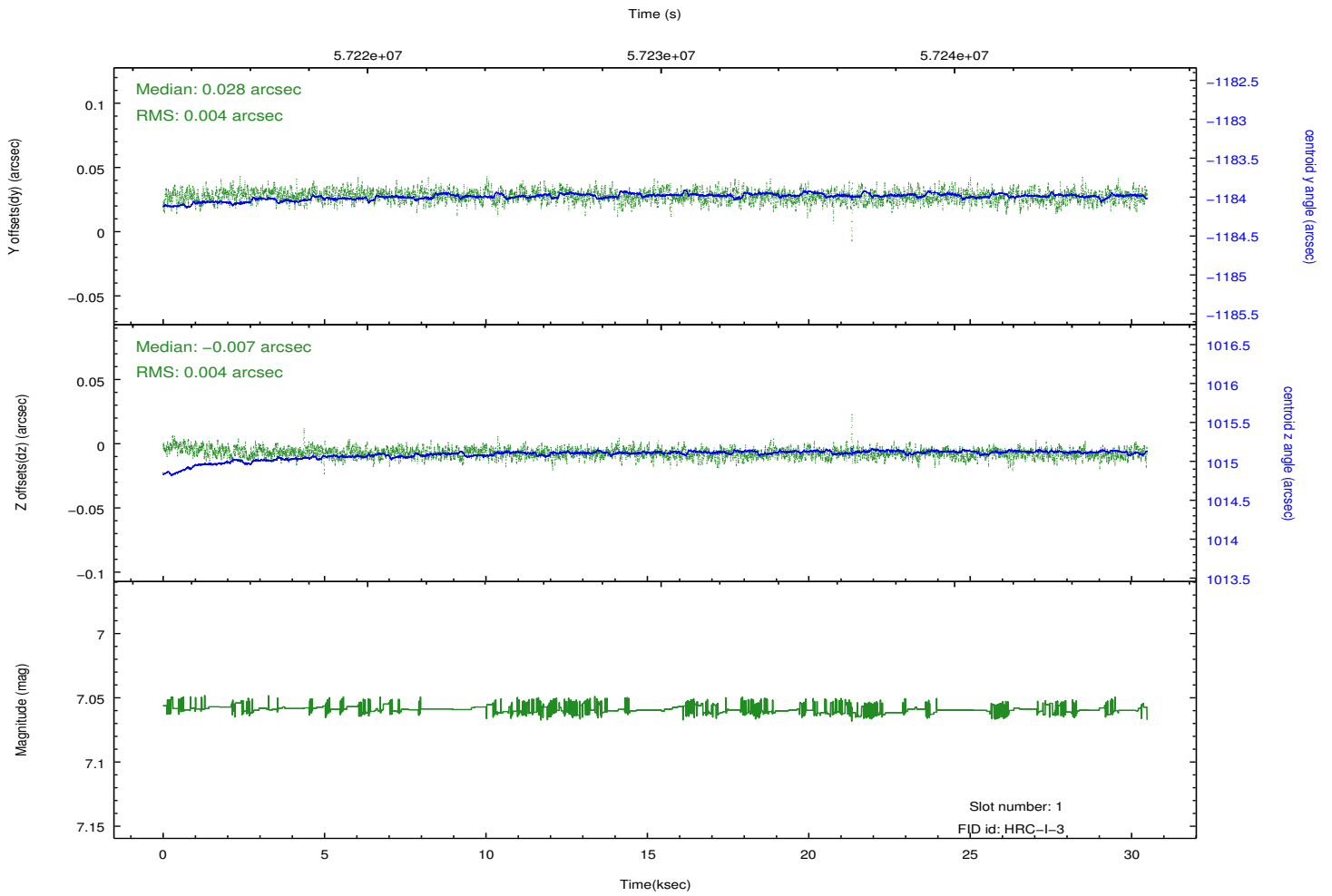
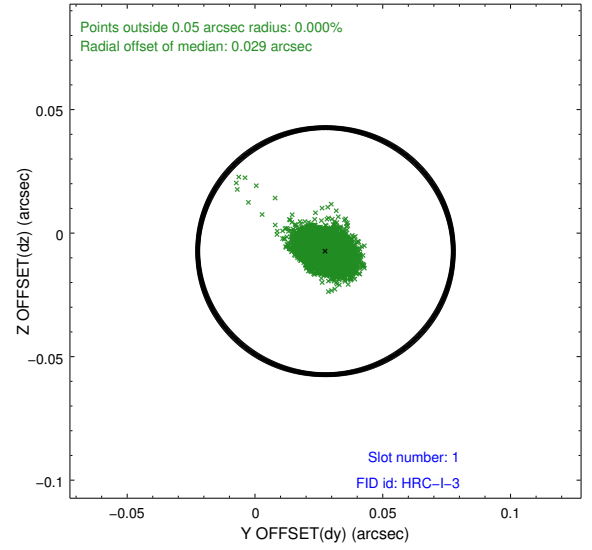
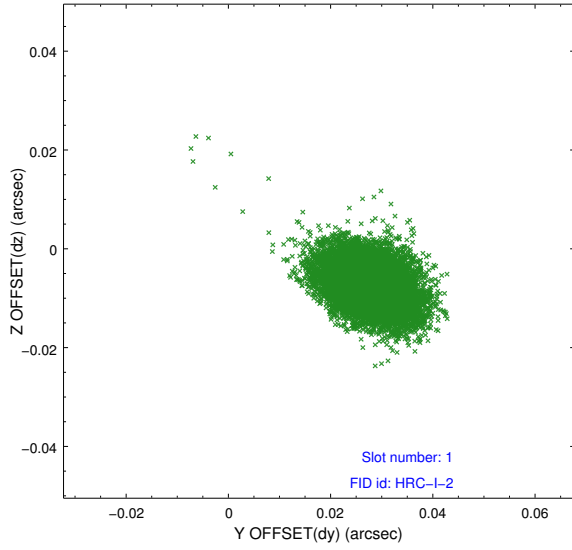


2.5 FID Slots

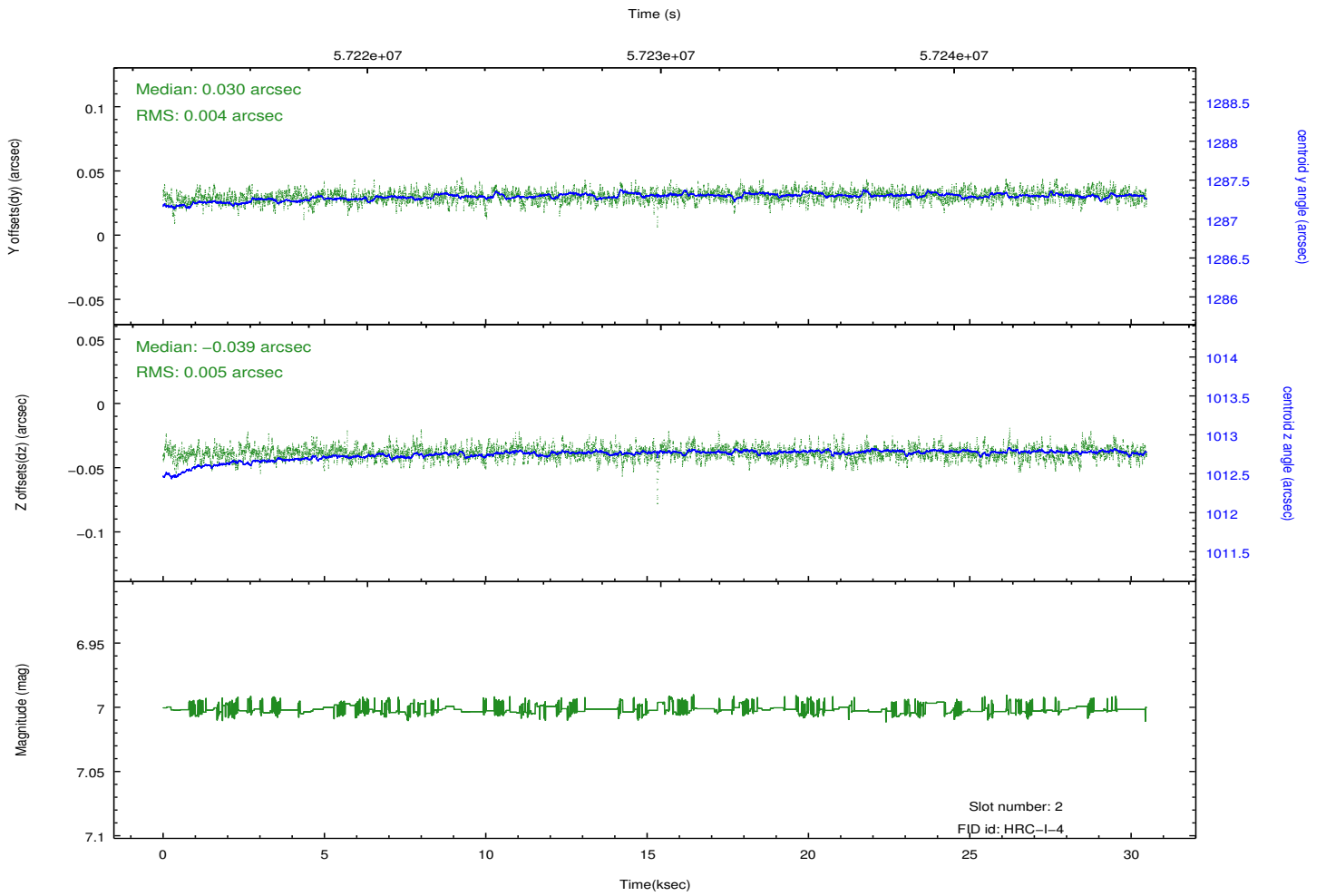
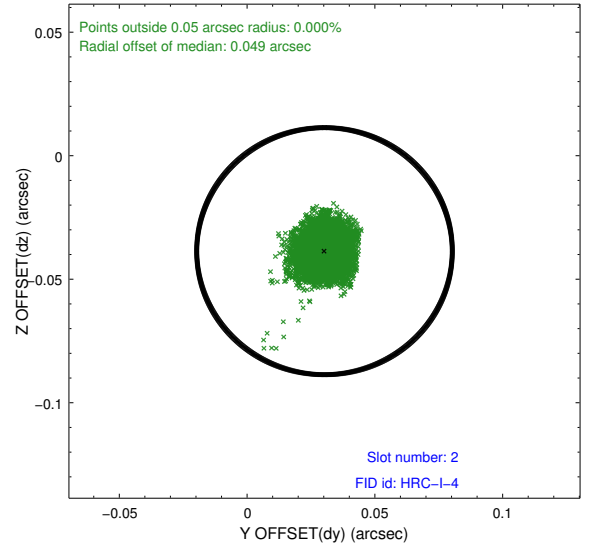
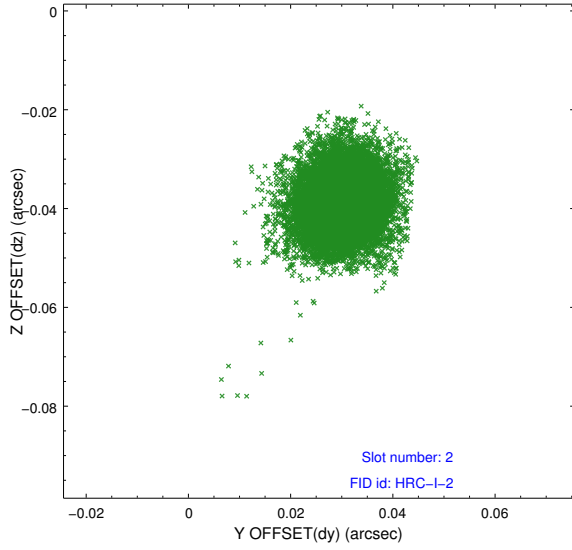
2.5.1 Slot 0



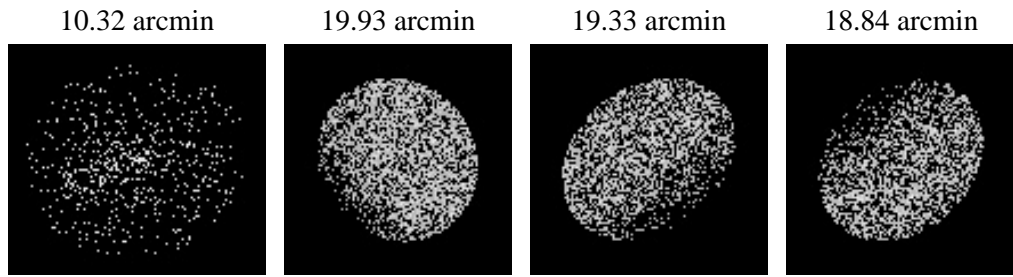
2.5.2 Slot 1



2.5.3 Slot 2



3 Point Sources



A Summary

A.1 Status

V&V Scientist	Joy Nichols
V&V Date (YYYY-MM-DD)	2009.11.23
V&V Edition	1
V&V Disposition and Status	OK
V&V Charge Time	30.151

A.2 Comments

Off-axis point spread function analysis.=====

The guide star in slot 7 was removed from the aspect solution due to poor data quality. The aspect solution is not expected to be degraded by removing one guide star from the solution.