

V&V Reference Report

L2 ASCDS Version : 8.4.5

Observation 14236 - L2 Version 1
Chandra X-Ray Center

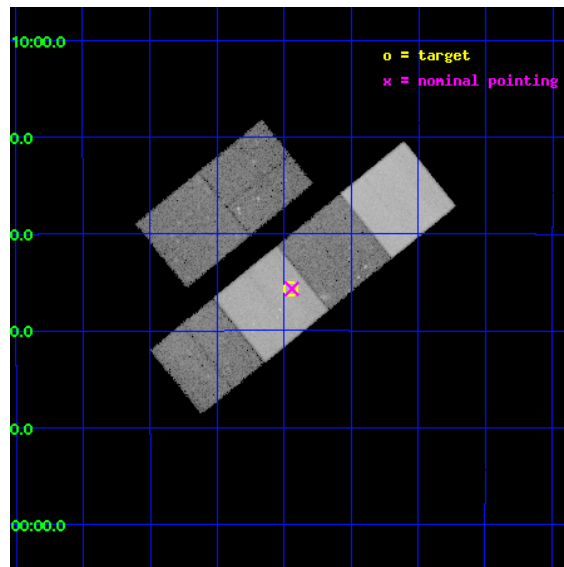
L2 Processing Date : Jun 14 2012

Contents

1	Front	2
2	OBI	3
2.1	OBI	3
2.1.1	Images	3
2.1.2	Bias	3
2.1.3	Parameters	4
2.1.4	Events	4
2.2	Compared Parameters	5
2.3	Aspect	6
2.4	Star Slots	9
2.4.1	Slot 3	9
2.4.2	Slot 4	10
2.4.3	Slot 5	11
2.4.4	Slot 6	12
2.4.5	Slot 7	13
2.5	FID Slots	14
2.5.1	Slot 0	14
2.5.2	Slot 1	15
2.5.3	Slot 2	16
A	Summary	17
A.1	Status	17
A.2	Comments	17

1 Front

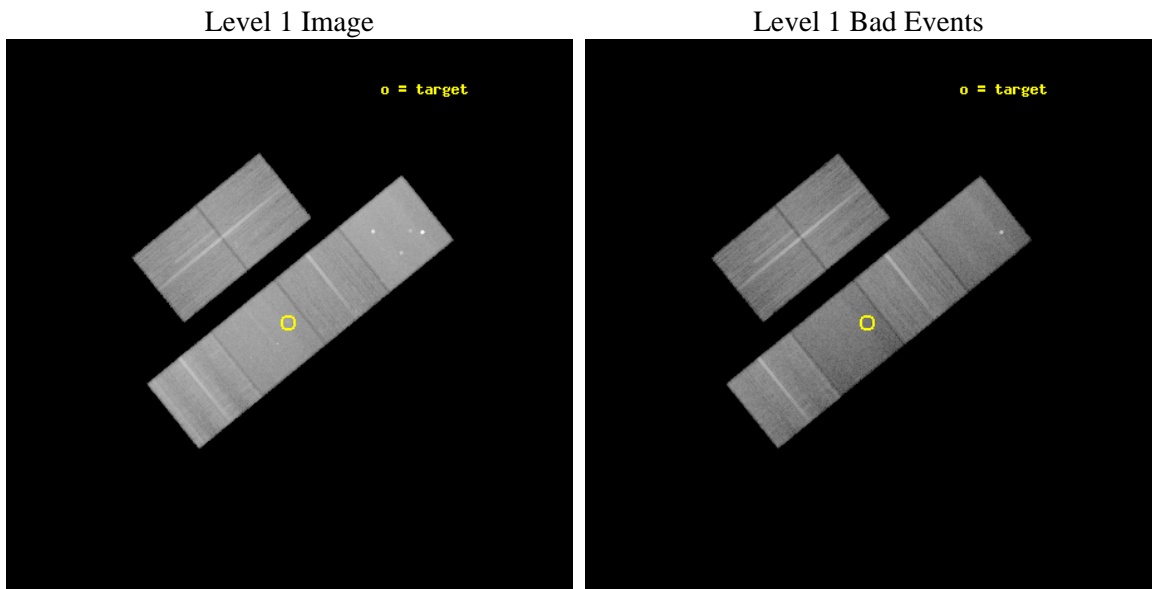
seq_num	801206	Sequence number
obs_id	14236	Observation id
title	A new unusual cluster of galaxies	Proposal title
observer	Professor Gordon Garmire	Principal investigator
object	CXO031027-203537	Source name
dtcycle	0	
cycle	P	events from which exps? Prim/Second/Both
ra_targ	47.61375	Observer's specified target RA [deg]
dec_targ	-20.593667	Observer's specified target Dec [deg]
ra_nom	47.610683494319	Nominal RA [deg]
dec_nom	-20.594618515233	Nominal Dec [deg]
roll_nom	140.9472625745	Nominal Roll [deg]
revision	1	Processing version of data
ontime	49481.599815726	Sum of GTIs [s]
liveltime	48855.034004617	Livetime [s]
ontime2	49481.599815726	Sum of GTIs [s]
ontime3	49481.599815726	Sum of GTIs [s]
ontime5	49481.599815726	Sum of GTIs [s]
ontime6	49475.117944717	Sum of GTIs [s]
ontime7	49481.599815726	Sum of GTIs [s]
ontime8	49481.599815726	Sum of GTIs [s]
l2events	439712	Number of level 2 events



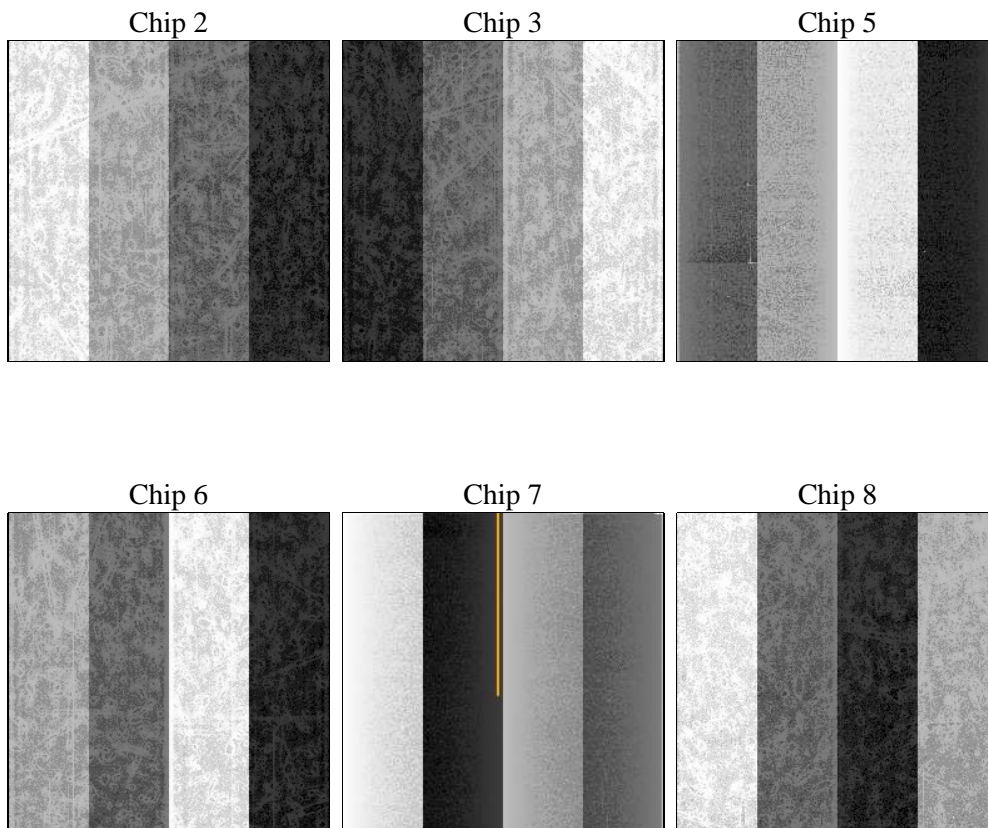
2 OBI

2.1 OBI

2.1.1 Images



2.1.2 Bias



2.1.3 Parameters

obi_num	0	Obi number	sched_exp_time	49514.886000	[s] Scheduled observation exposure time
ascdsver	8.4.5	Processing system revision	ontime	49481.599815726	Sum of GTIs [s]
caldbver	4.4.10	 	ontime2	49481.599815726	Sum of GTIs [s]
date	2012-06-14T14:33:24	Date and time of file creation	ontime3	49481.599815726	Sum of GTIs [s]
revision	1	Processing version of data	ontime5	49481.599815726	Sum of GTIs [s]
			ontime6	49475.117944717	Sum of GTIs [s]
			ontime7	49481.599815726	Sum of GTIs [s]
			ontime8	49481.599815726	Sum of GTIs [s]
			l1events	1833663	Number of level 1 events

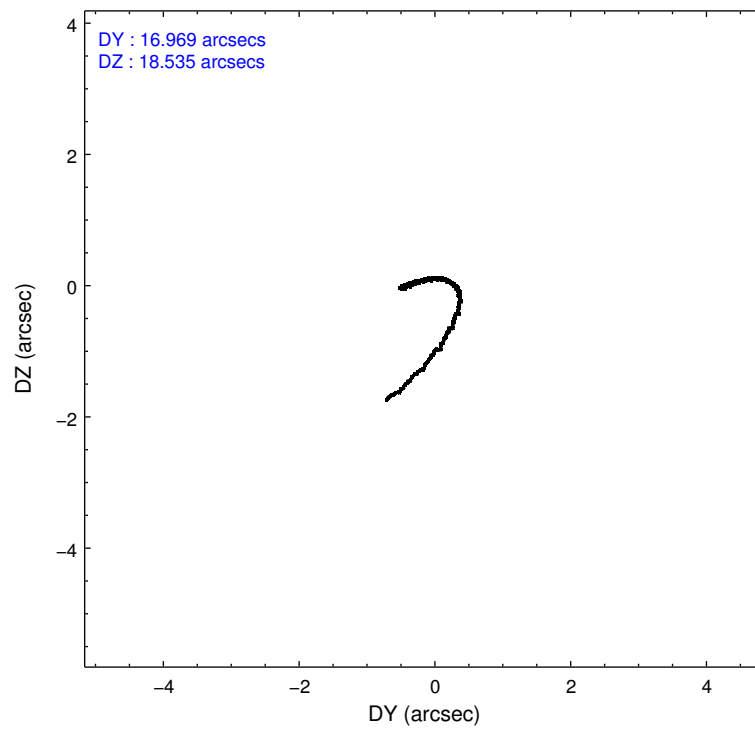
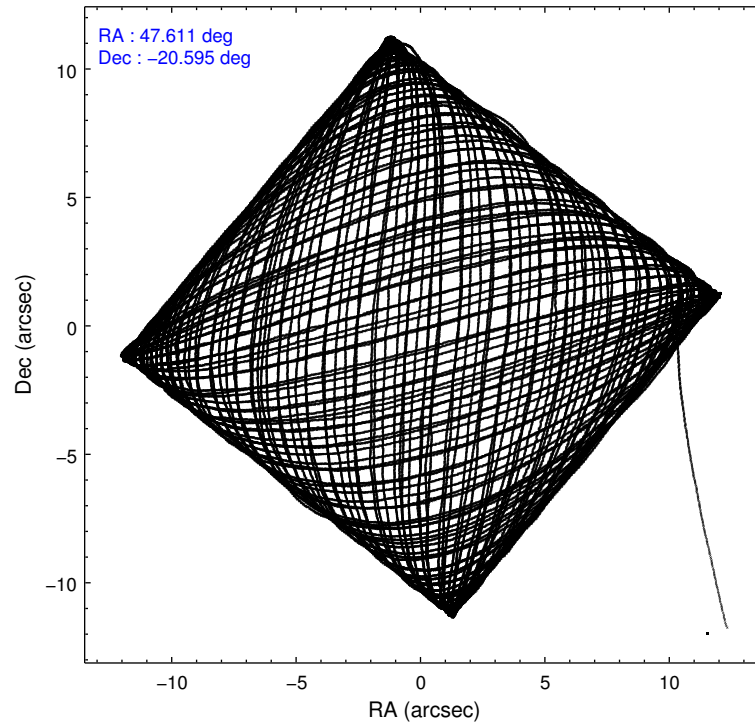
2.1.4 Events

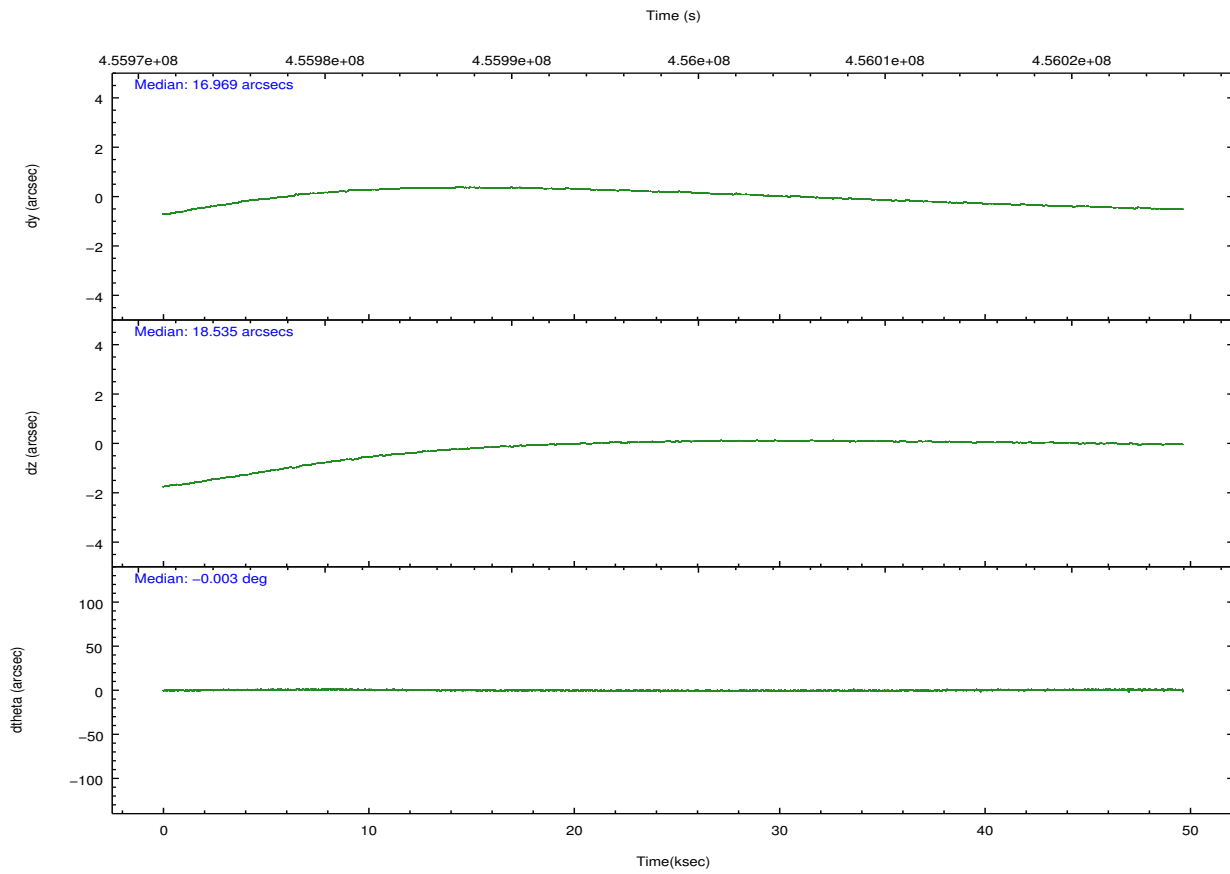
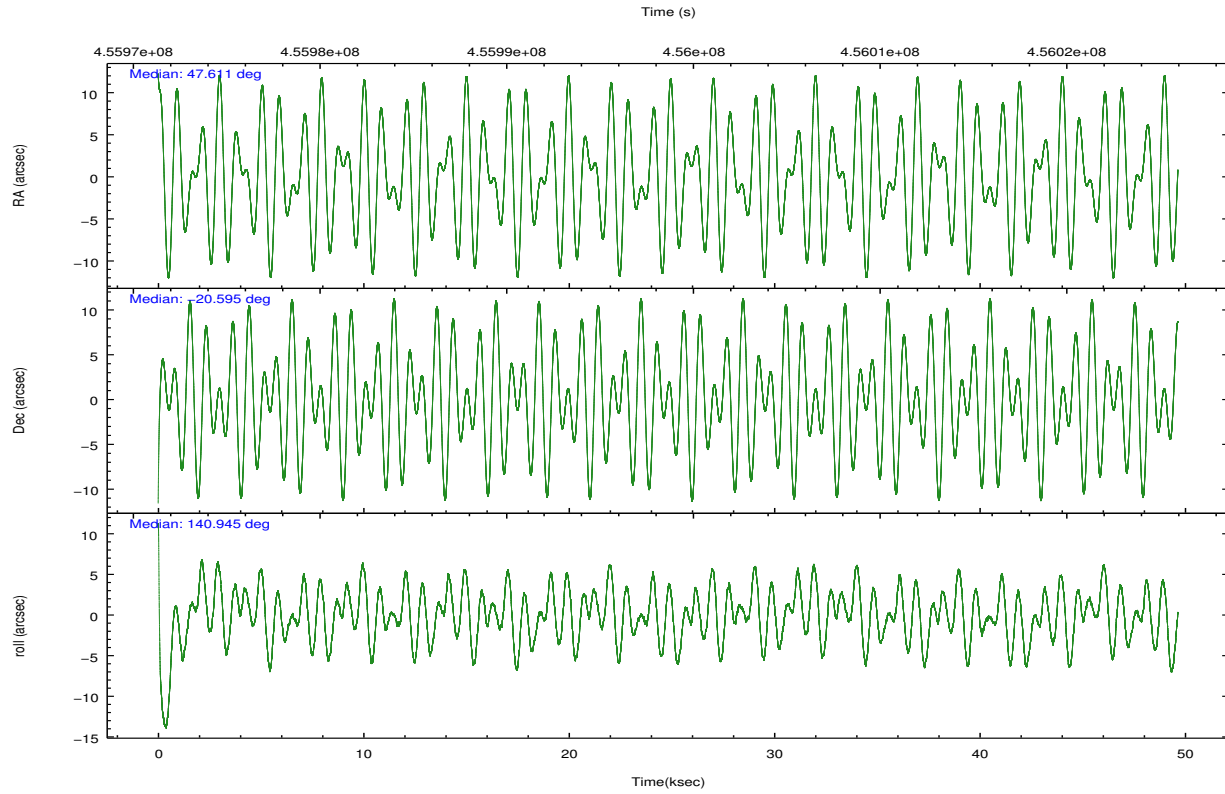
	ccd 2	ccd 3	ccd 5	ccd 6	ccd 7	ccd 8		ccd 2	ccd 3	ccd 5	ccd 6	ccd 7	ccd 8
level 1 events	270928	252789	403018	264145	302900	339883	grade 0 events	11081	10317	25976	11882	14777	26060
rejected events	240996	224382	188312	232095	156381	245226		4%	4%	6%	4%	4%	7%
rejected %	88%	88%	46%	87%	51%	72%	grade 1 events	147	174	3087	154	436	303
								0%	0%	0%	0%	0%	0%
							grade 2 events	7432	6363	67871	7198	31503	22909
								2%	2%	16%	2%	10%	6%
							grade 3 events	2881	3060	8113	3148	13138	10080
								1%	1%	2%	1%	4%	2%
							grade 4 events	3007	3062	7732	3162	12949	9342
								1%	1%	1%	1%	4%	2%
							grade 5 events	9566	11338	30380	11329	32042	16891
								3%	4%	7%	4%	10%	4%
							grade 6 events	5532	5611	105052	6665	74170	26298
								2%	2%	26%	2%	24%	7%
							grade 7 events	231282	212864	154807	220607	123885	228000
								85%	84%	38%	83%	40%	67%

2.2 Compared Parameters

Parameter	Planned	Actual	Parameter	Planned	Actual
Instrument	ACIS	ACIS	Obspar format version number	7	7
Detector	ACIS-235678	ACIS-235678	Obspar file type	PREDICTED	ACTUAL
Grating	NONE	NONE	Obspar update status	NONE	UPDATED
Data mode	VFAINT	VFAINT	CCD I0 on	N	N
Observation mode	POINTING	POINTING	CCD I1 on	N	N
[deg] Pointing RA	47.639592	47.61068349431945	CCD I2 on	Y	Y
[deg] Pointing Dec	-20.598562	-20.59461851523283	CCD I3 on	Y	Y
[deg] Pointing Roll	140.800799	140.9472625744964	CCD S0 on	N	N
[mm] SIM focus pos	-0.684267	-0.6828225247311905	CCD S1 on	O1	Y
[mm] SIM defocus	0	0.001444936568705701	CCD S2 on	Y	Y
[mm] SIM translation stage pos	-190.132523	-190.1400660498719	CCD S3 on	Y	Y
[mm] SIM translation stage offset	0	0.00754346686406393	CCD S4 on	O2	Y
[s] Observation start time (MET)	455973941.184000	455972636.13303	CCD S5 on	N	N
Observation start date	2012-06-13T11:24:35	2012-06-13T11:03:56	Number of optional ACIS chips dropped	0	0
[s] Observation end time (MET)	456023456.184000	456023681.64825	On-chip summing requested	N	N
Observation end date	2012-06-14T01:09:50	2012-06-14T01:14:41	Subarray requested	NONE	NONE
Read mode	TIMED	TIMED	Alternating exposures requested	N	N
			[s] Primary exposure time	0.000000	3.2

2.3 Aspect



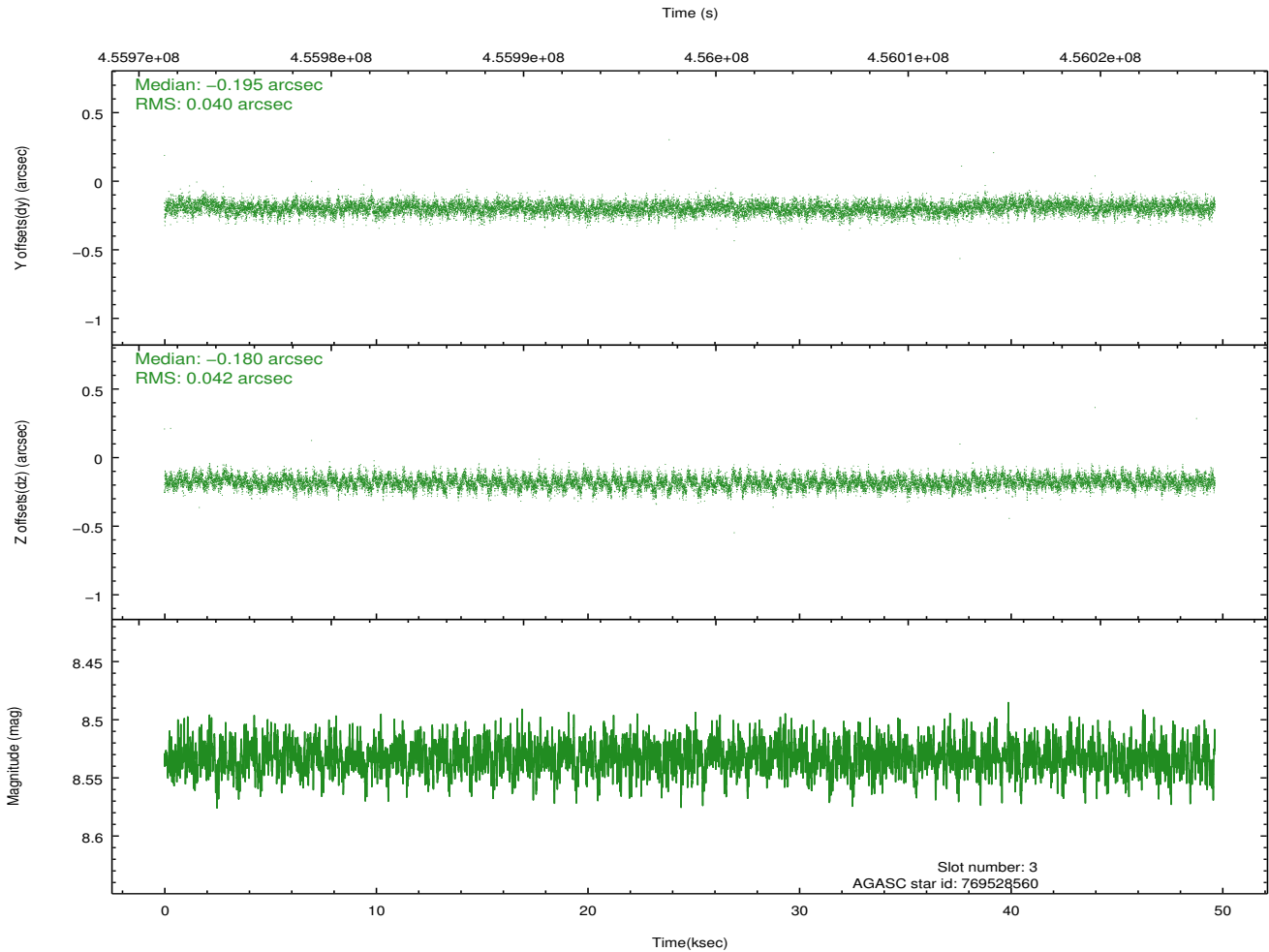
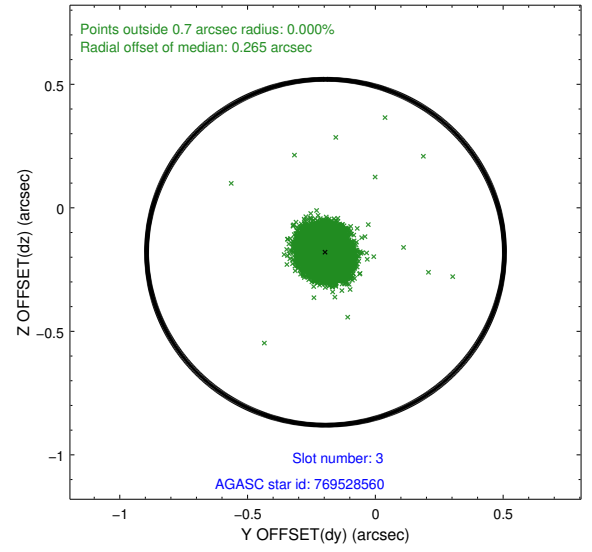
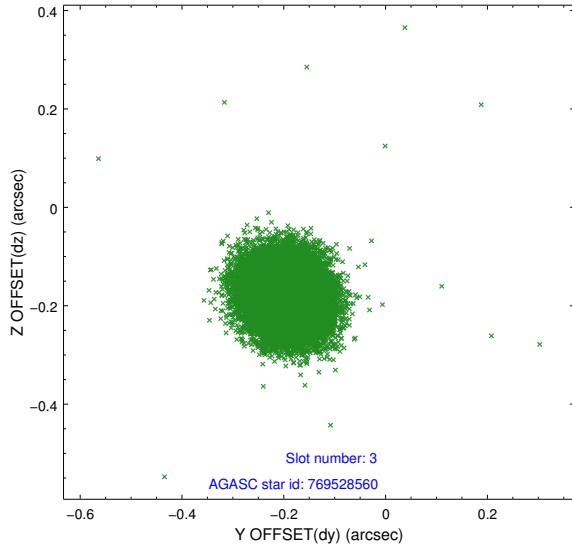


Slot Statistics

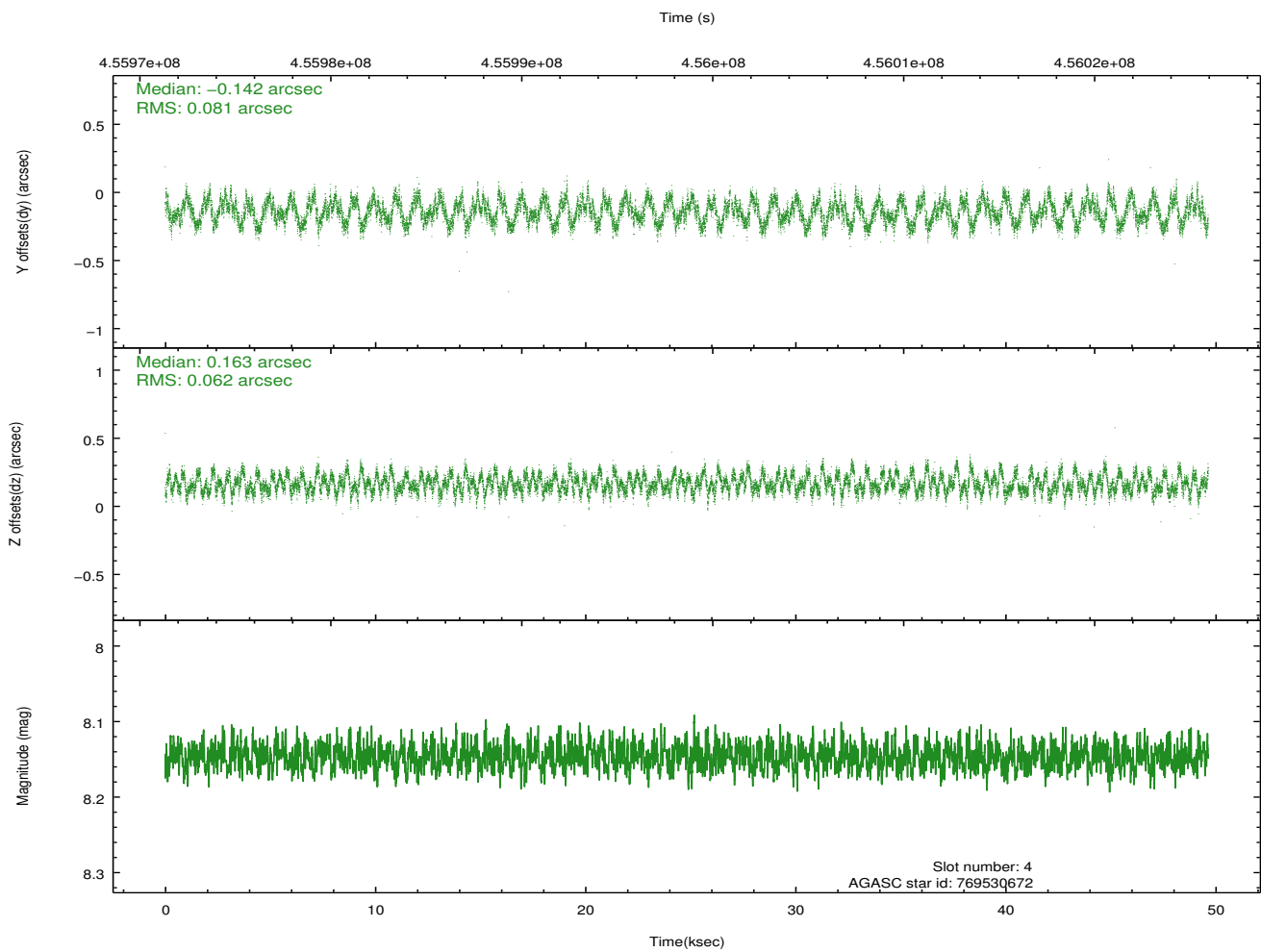
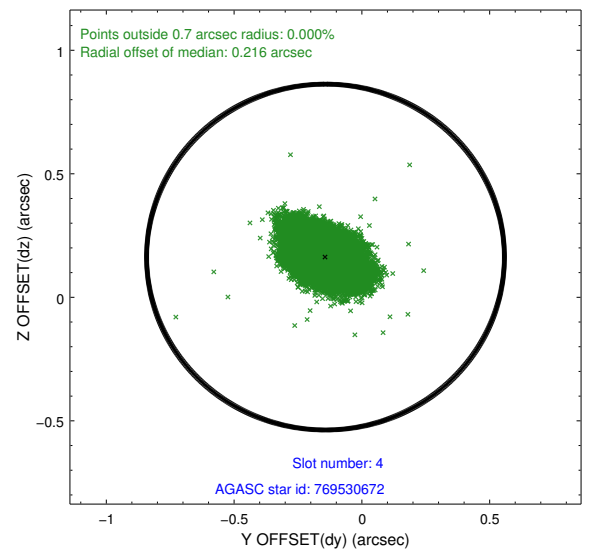
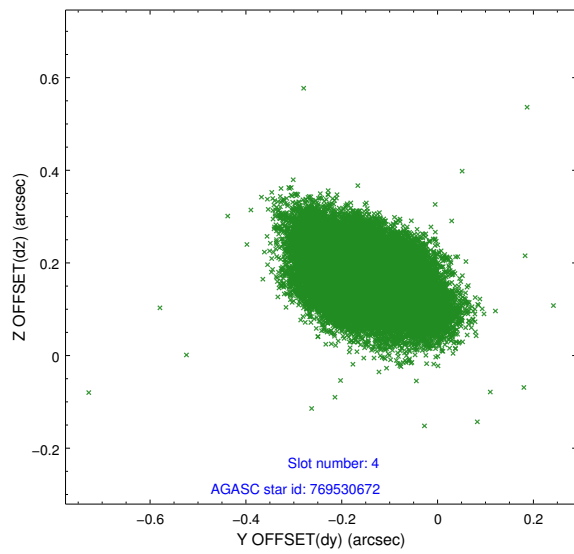
slot	status	id	mag	n_pts	med_dy	med_dz	dr1	dr2	ra	dec	mean_y	mean_z
0	FID	ACIS-S-2	6.90	12109	-0.097	-0.057	0.012	0.022	0.000000	0.000000	-770.09	-1739.80
1	FID	ACIS-S-4	6.99	12109	0.232	0.062	0.010	0.018	0.000000	0.000000	2143.56	168.76
2	FID	ACIS-S-5	7.02	12108	-0.167	0.004	0.012	0.022	0.000000	0.000000	-1822.99	162.43
3	GUIDE	769528560	8.53	24209	-0.195	-0.180	0.061	0.100	47.066460	-20.416749	1909.92	717.59
4	GUIDE	769530672	8.15	24177	-0.142	0.163	0.110	0.172	47.403721	-20.012503	1951.12	-1129.55
5	GUIDE	769531808	9.04	24202	0.115	-0.191	0.093	0.152	47.771077	-21.398694	-2162.01	1953.89
6	GUIDE	770451224	7.77	24213	0.105	0.161	0.081	0.129	48.005011	-20.791582	-1392.99	-237.21
7	GUIDE	770451544	7.56	24213	0.112	0.042	0.101	0.155	48.064077	-20.619593	-1157.21	-843.52

2.4 Star Slots

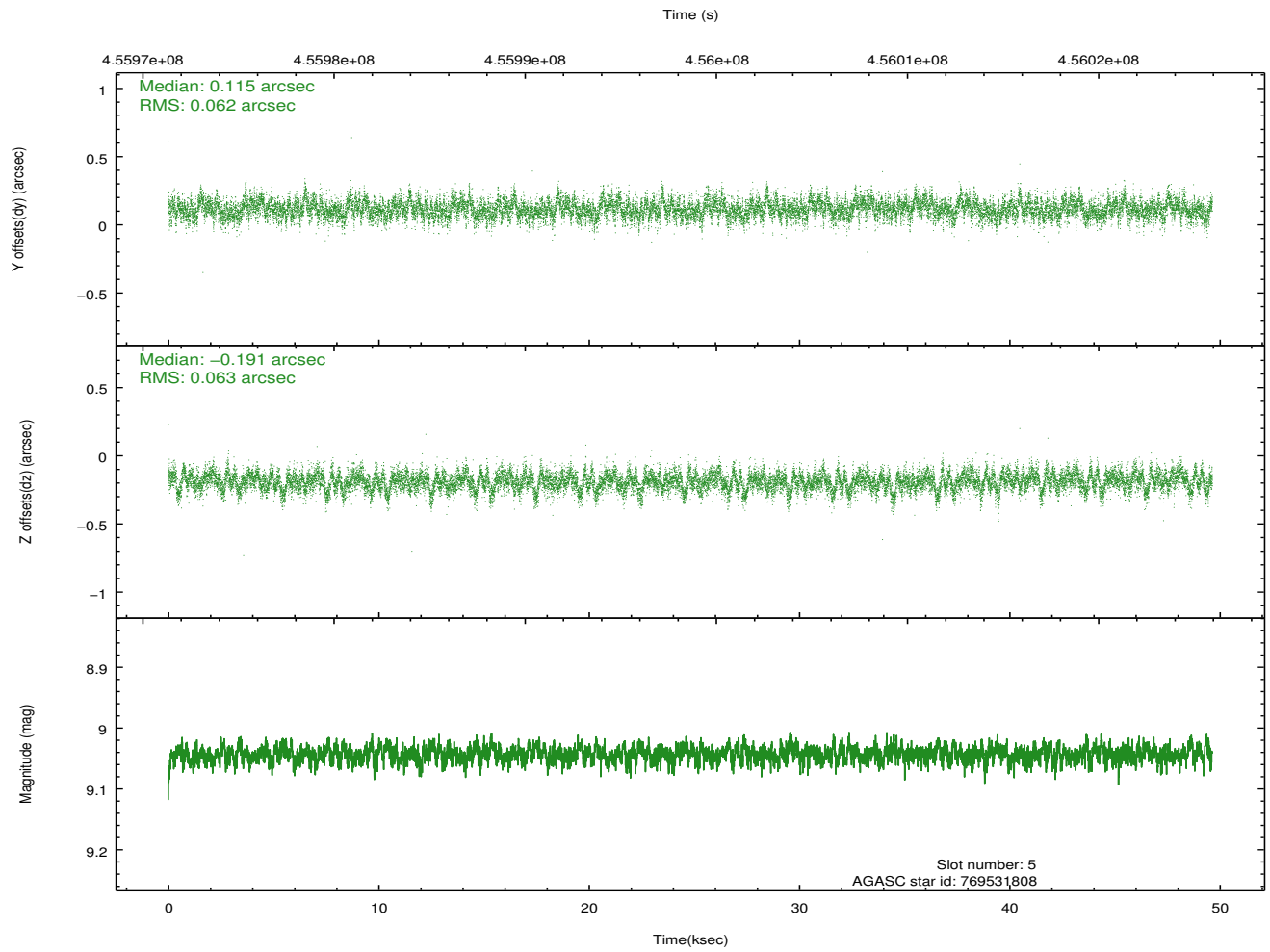
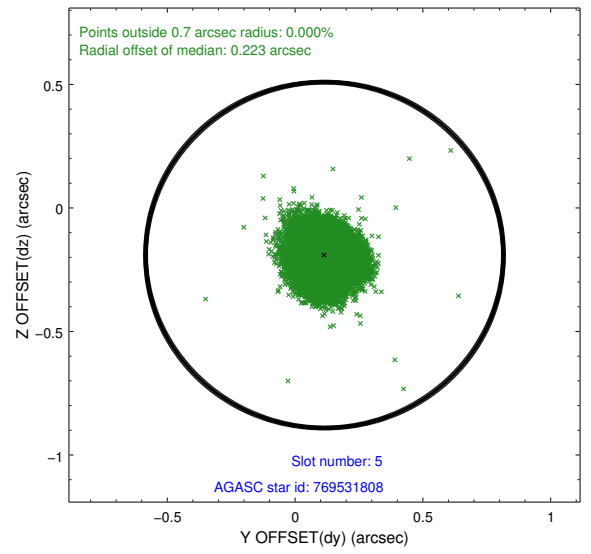
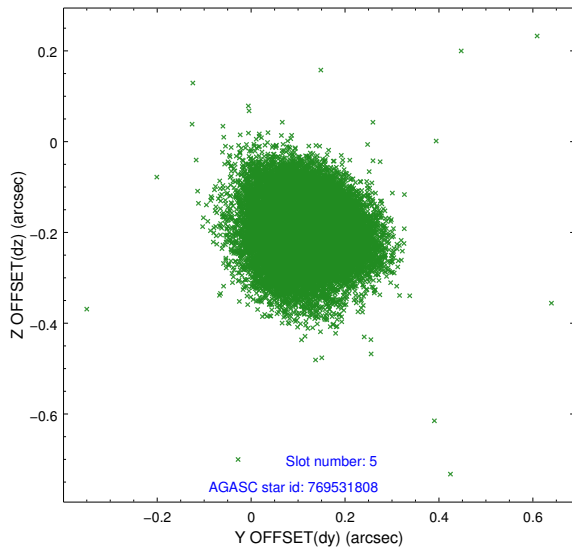
2.4.1 Slot 3



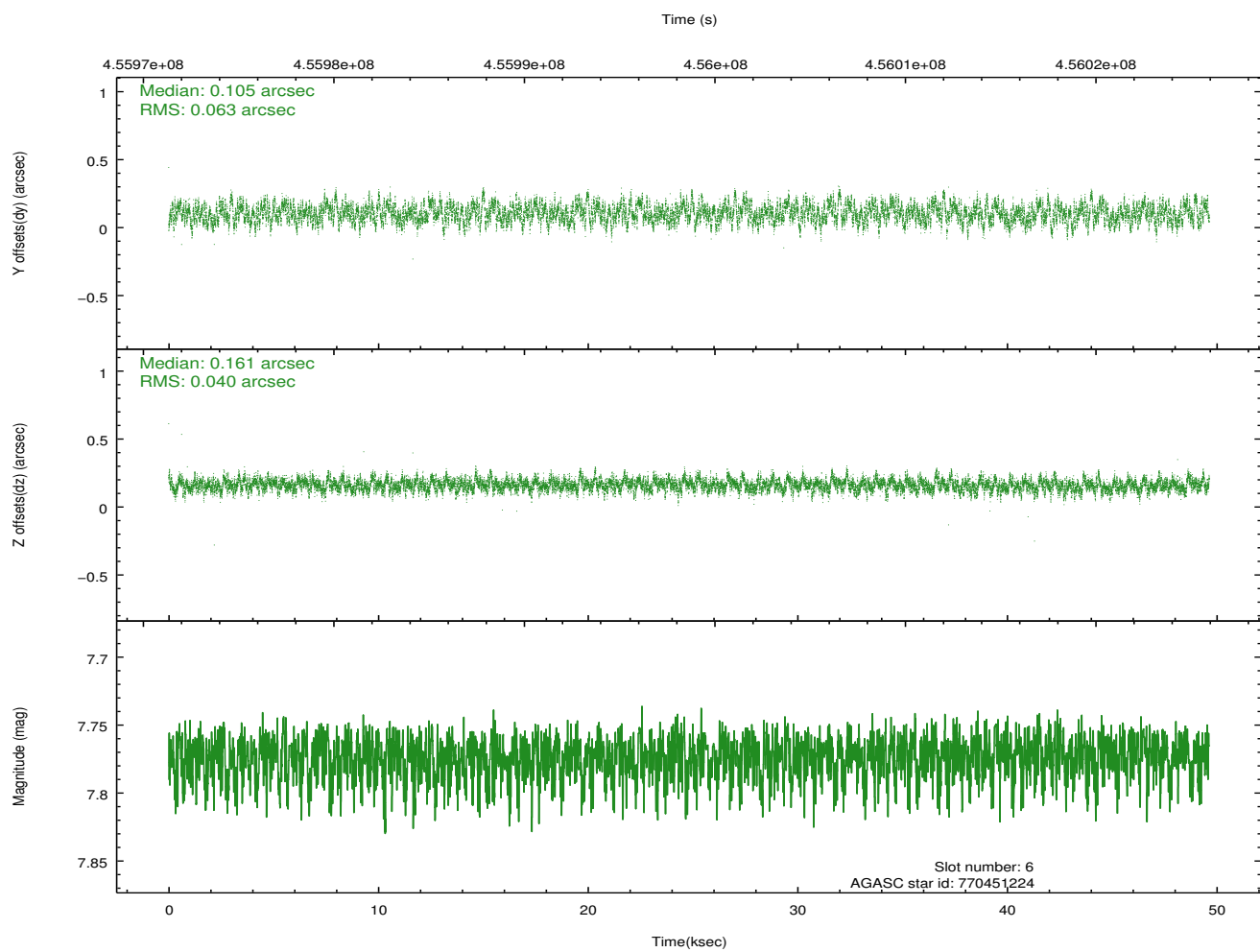
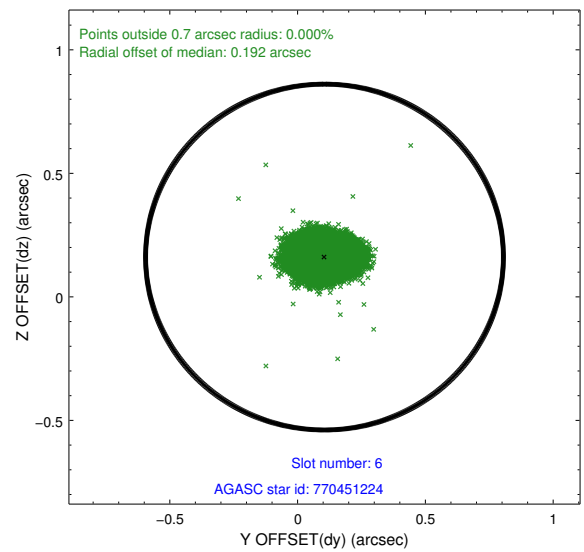
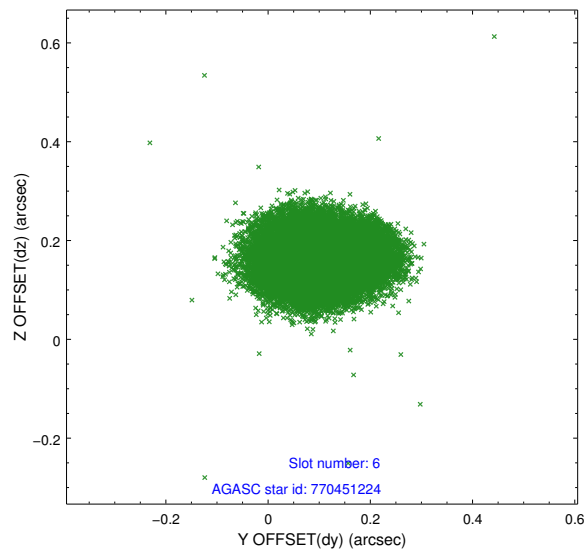
2.4.2 Slot 4



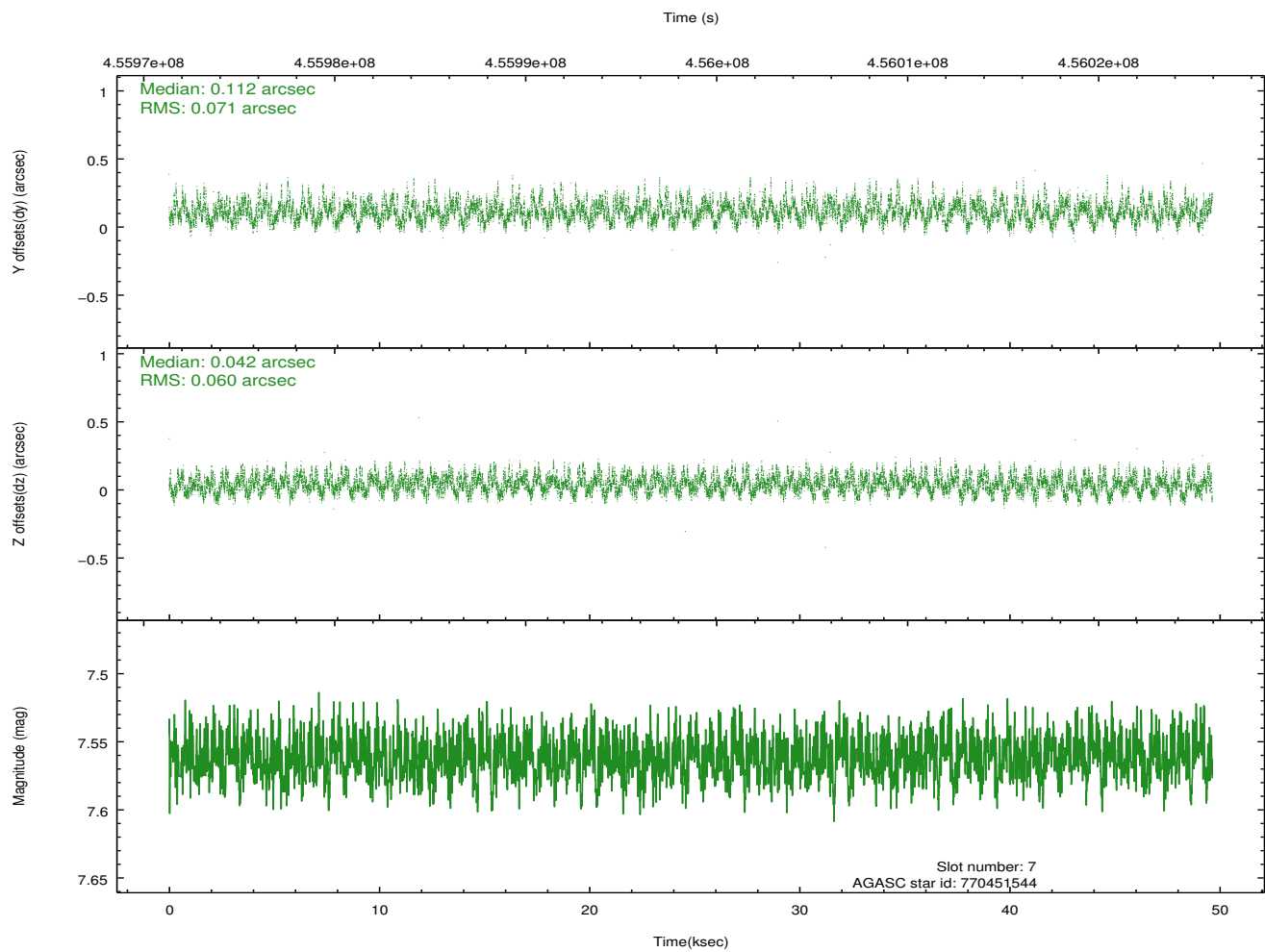
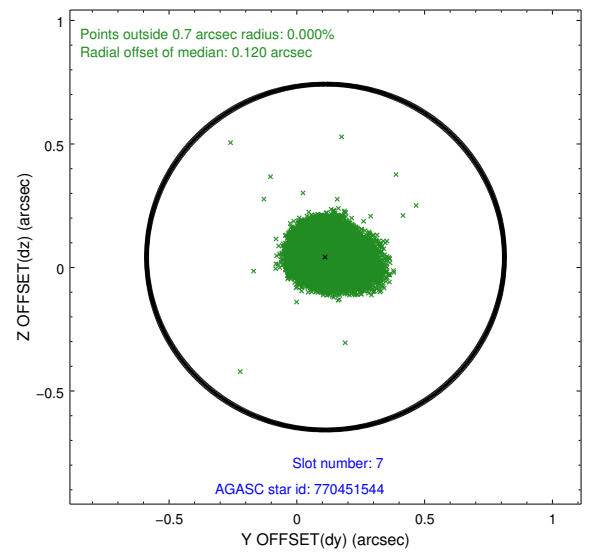
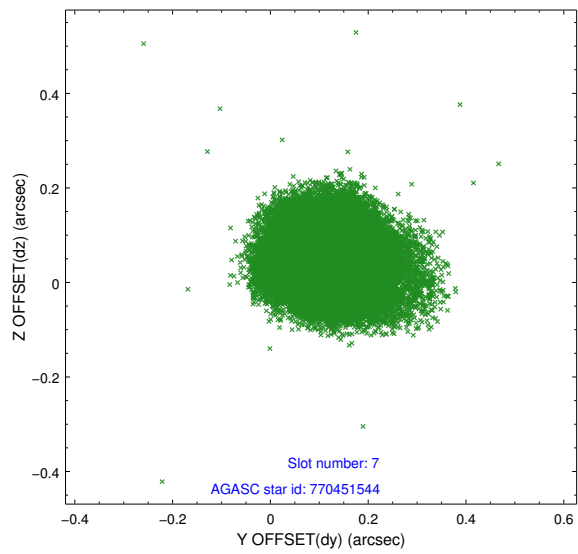
2.4.3 Slot 5



2.4.4 Slot 6

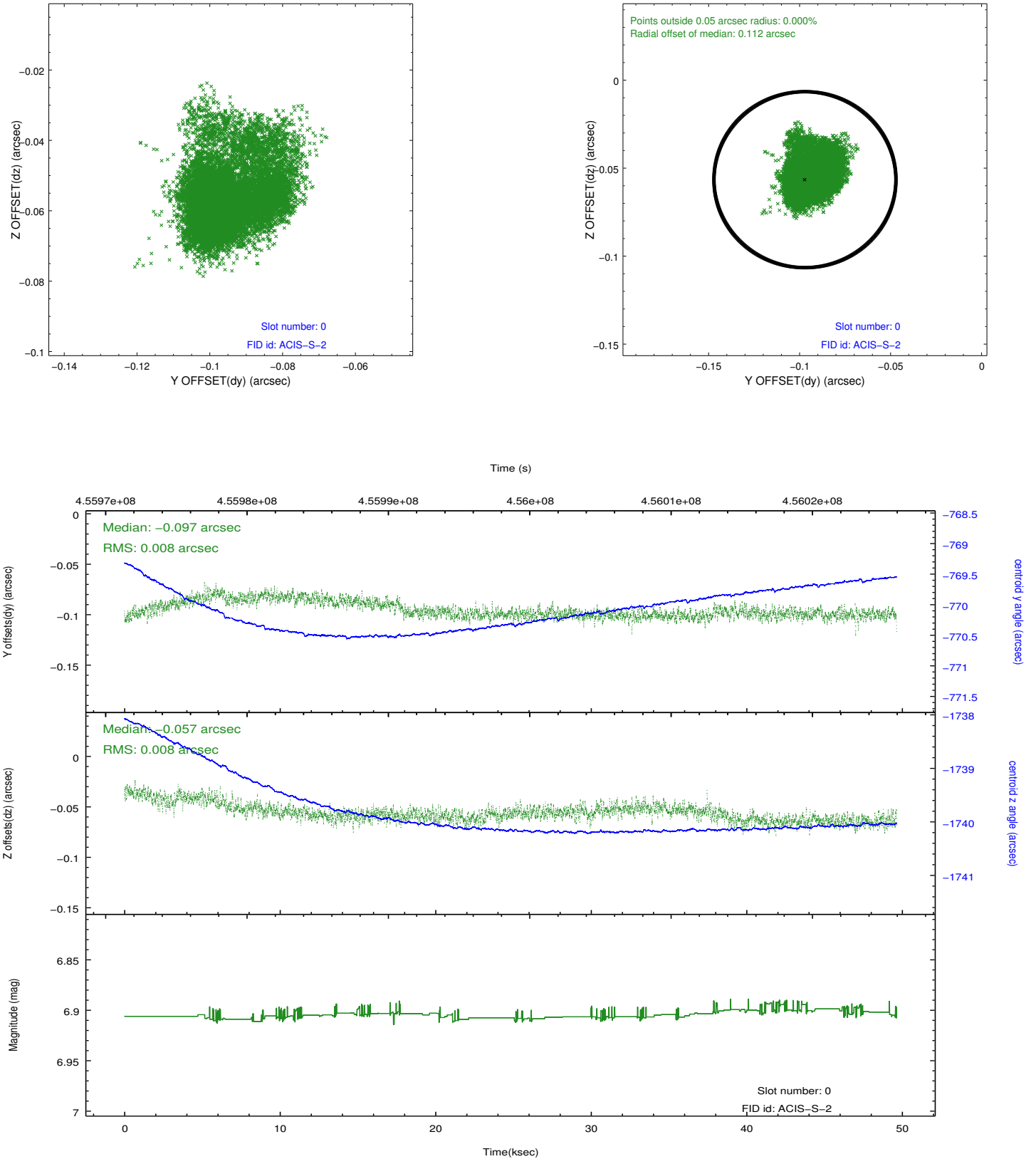


2.4.5 Slot 7

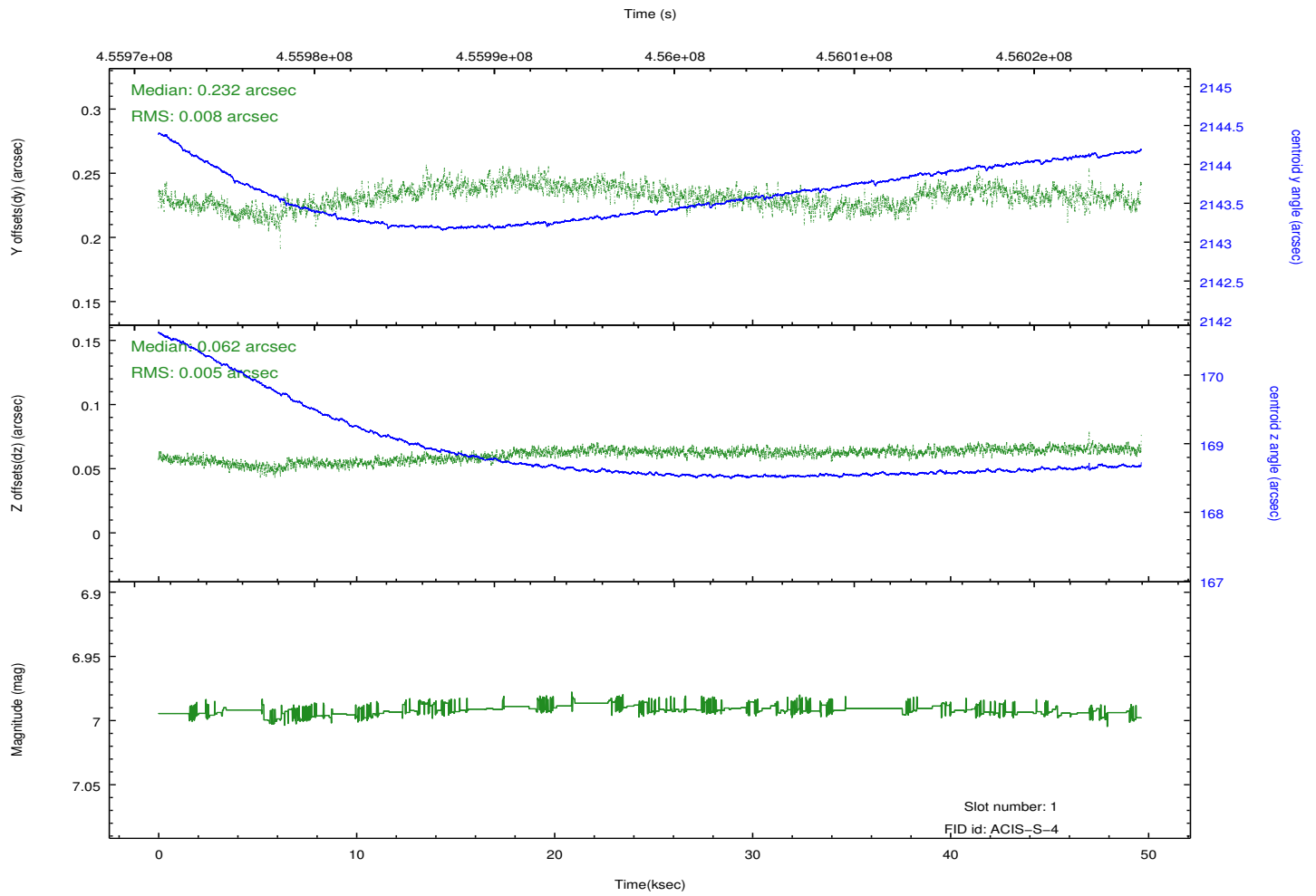
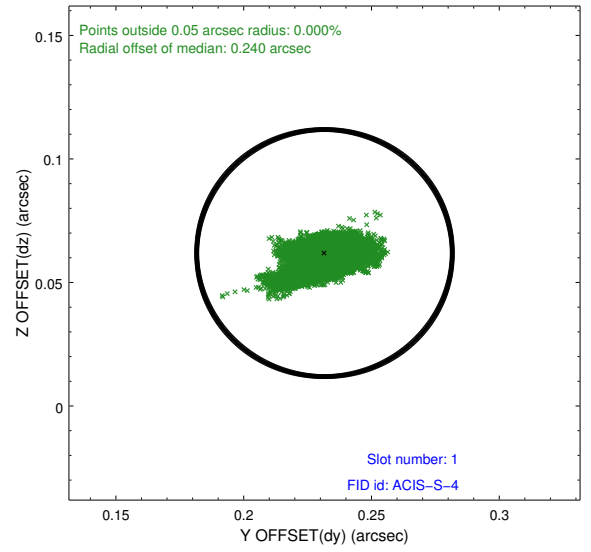
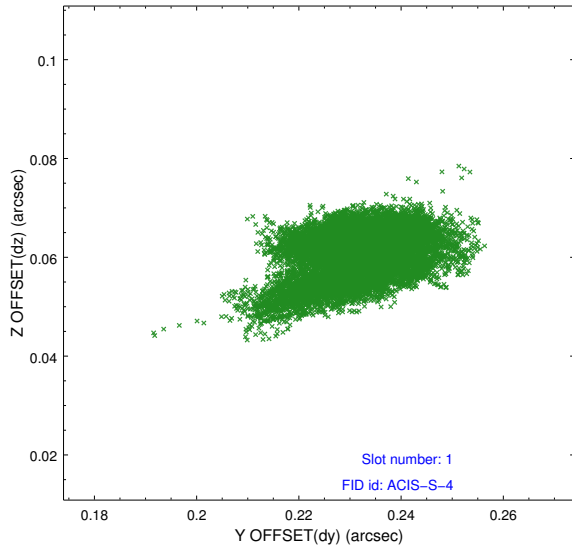


2.5 FID Slots

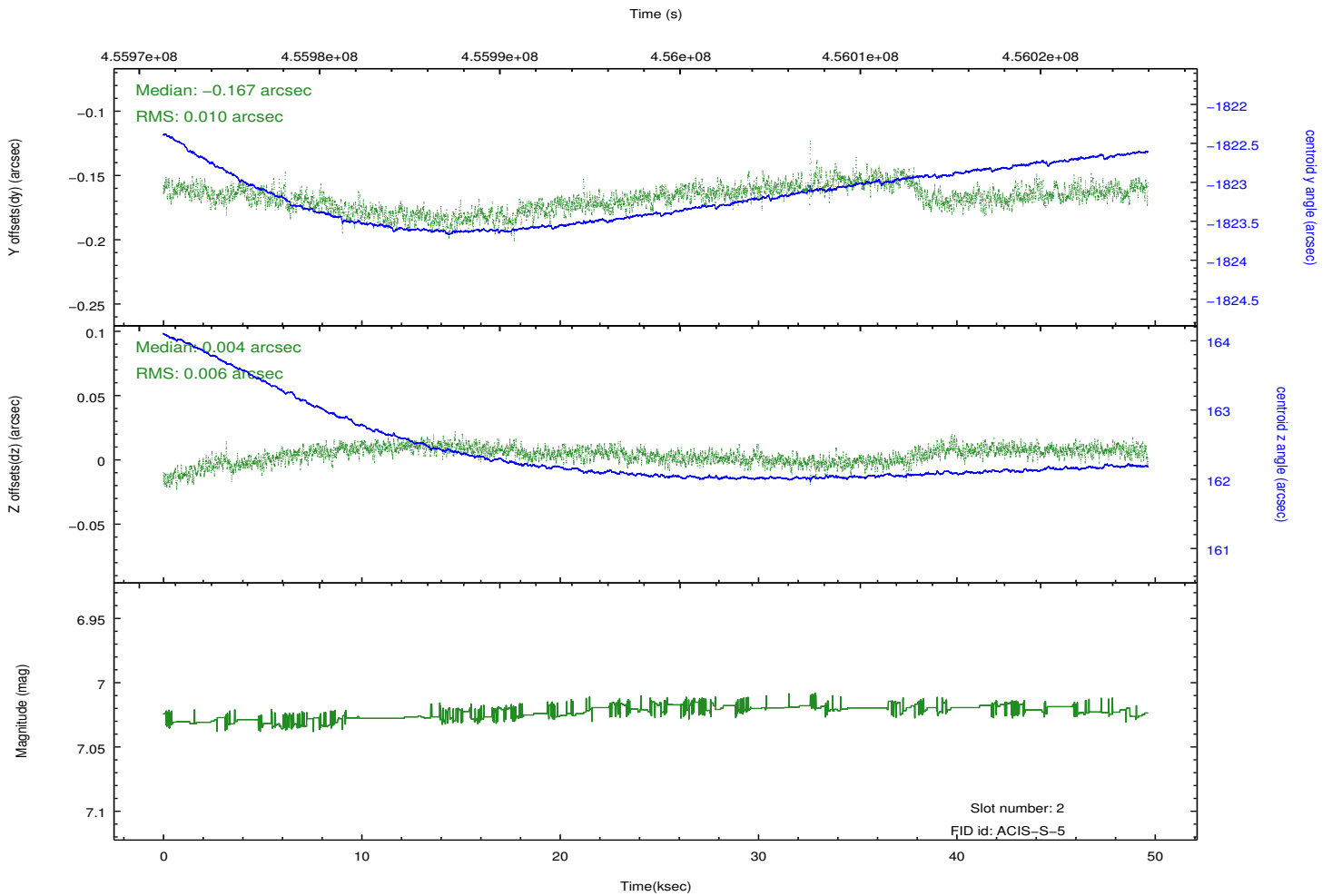
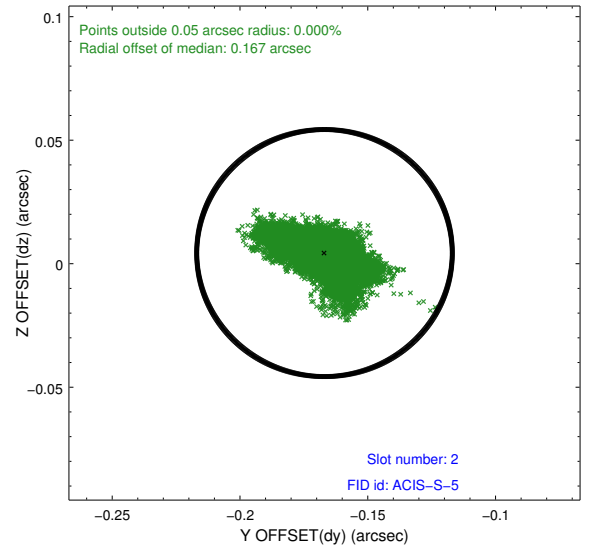
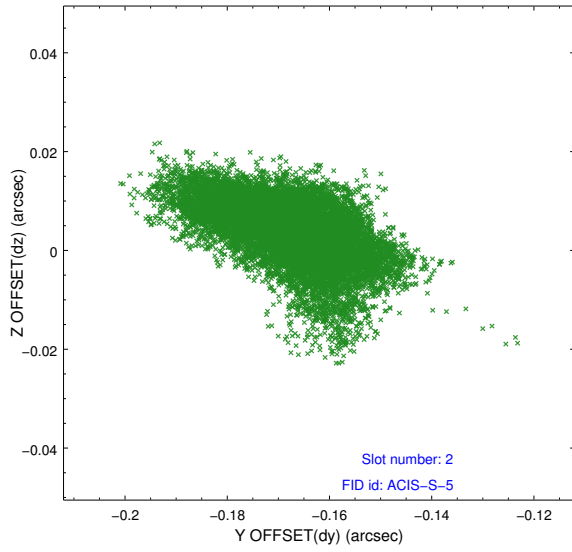
2.5.1 Slot 0



2.5.2 Slot 1



2.5.3 Slot 2



A Summary

A.1 Status

V&V Scientist	Jen Lauer
V&V Date (YYYY-MM-DD)	2012.06.14
V&V Edition	1
V&V Disposition and Status	OK
V&V Charge Time	49.481599815726

A.2 Comments