

V&V Reference Report

L2 ASCDS Version : 8.4.4

Observation 14426 - L2 Version 3
Chandra X-Ray Center

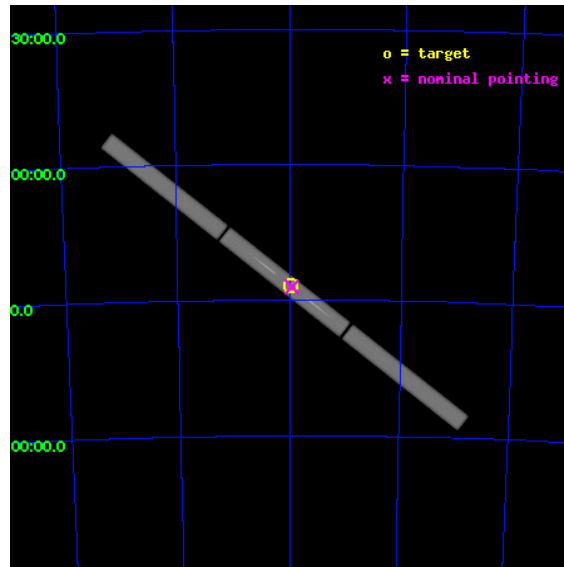
L2 Processing Date : Aug 9 2012

Contents

1	Front	2
2	OBI	3
2.1	OBI	3
2.1.1	Images	3
2.1.2	Parameters	4
2.1.3	Events	4
2.2	Compared Parameters	5
2.3	Aspect	6
2.4	Star Slots	9
2.4.1	Slot 3	9
2.4.2	Slot 4	10
2.4.3	Slot 5	11
2.4.4	Slot 6	12
2.4.5	Slot 7	13
2.5	FID Slots	14
2.5.1	Slot 0	14
2.5.2	Slot 1	15
2.5.3	Slot 2	16
3	Gratings	17
3.1	LETG Arm	17
A	Summary	19
A.1	Status	19
A.2	Comments	19

1 Front

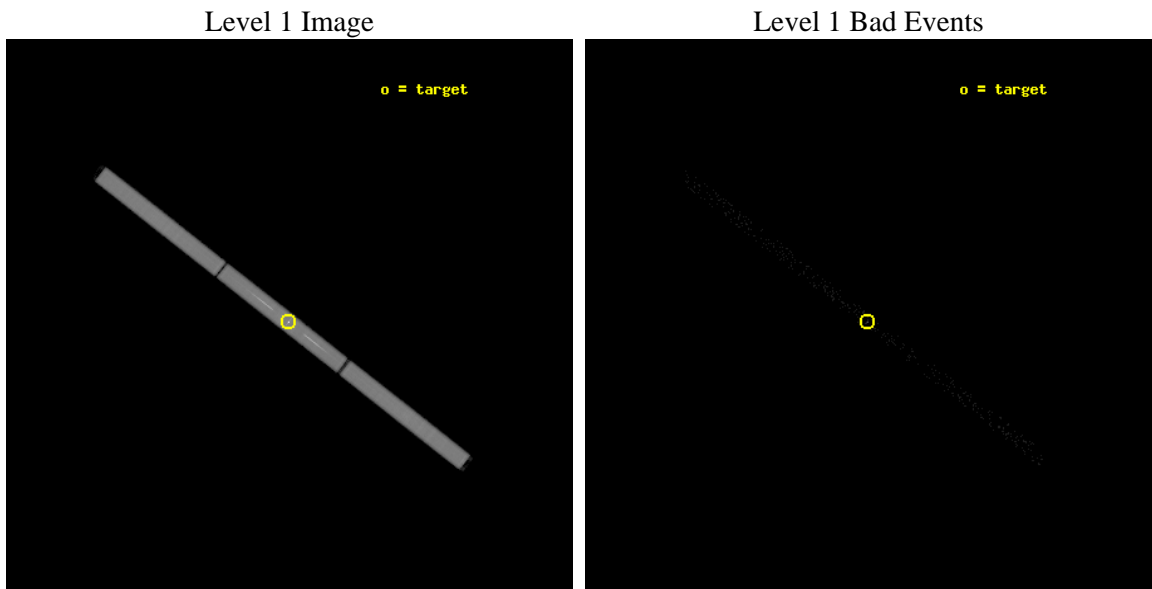
seq_num	300312	Sequence number
obs_id	14426	Observation id
title	Nova LMC 2012 at high spectral resolution	Proposal title
observer	Dr. Jeremy Drake	Principal investigator
object	Nova LMC 2012	Source name
ra_targ	73.736667	Observer's specified target RA [deg]
dec_targ	-70.448611	Observer's specified target Dec [deg]
ra_nom	73.725441811446	Nominal RA [deg]
dec_nom	-70.451425247244	Nominal Dec [deg]
roll_nom	217.96212569507	Nominal Roll [deg]
revision	3	Processing version of data
ontime	20189.682320416	[s]
livetime	20016.068370786	Ontime multiplied by DTCOR
l2events	1433739	Number of level 2 events



2 OBI

2.1 OBI

2.1.1 Images



2.1.2 Parameters

obi_num	0	Obi number	sched_exp_time	20000.000000	[s] Scheduled observation exposure time
ascdsver	8.4.5	Processing system revision	ontime	20189.682320416	[s]
caldbver	4.5.1.1	 	l1events	1997894	Number of level 1 events
date	2012-08-09T19:04:05	Date and time of file creation			
revision	3	Processing version of data			

2.1.3 Events

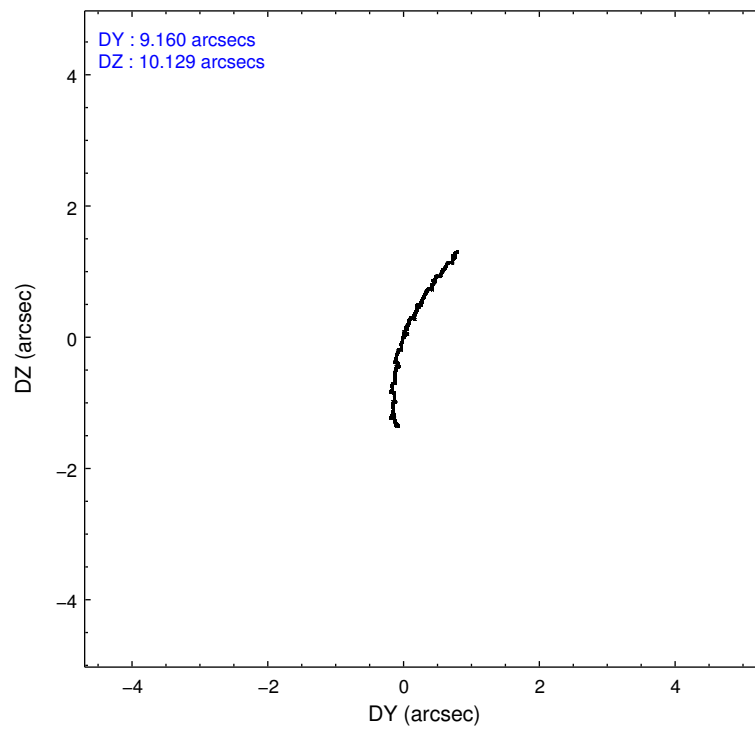
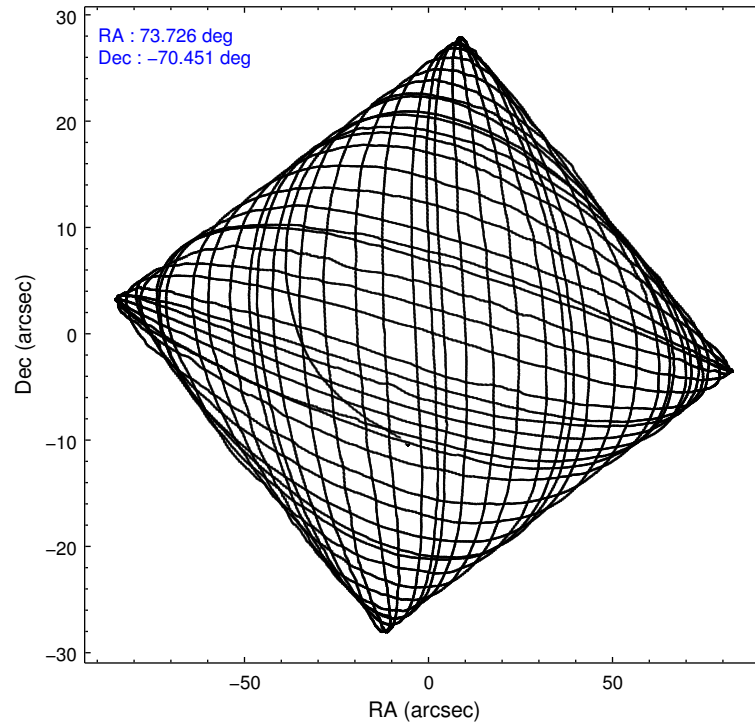
Level 1 Events

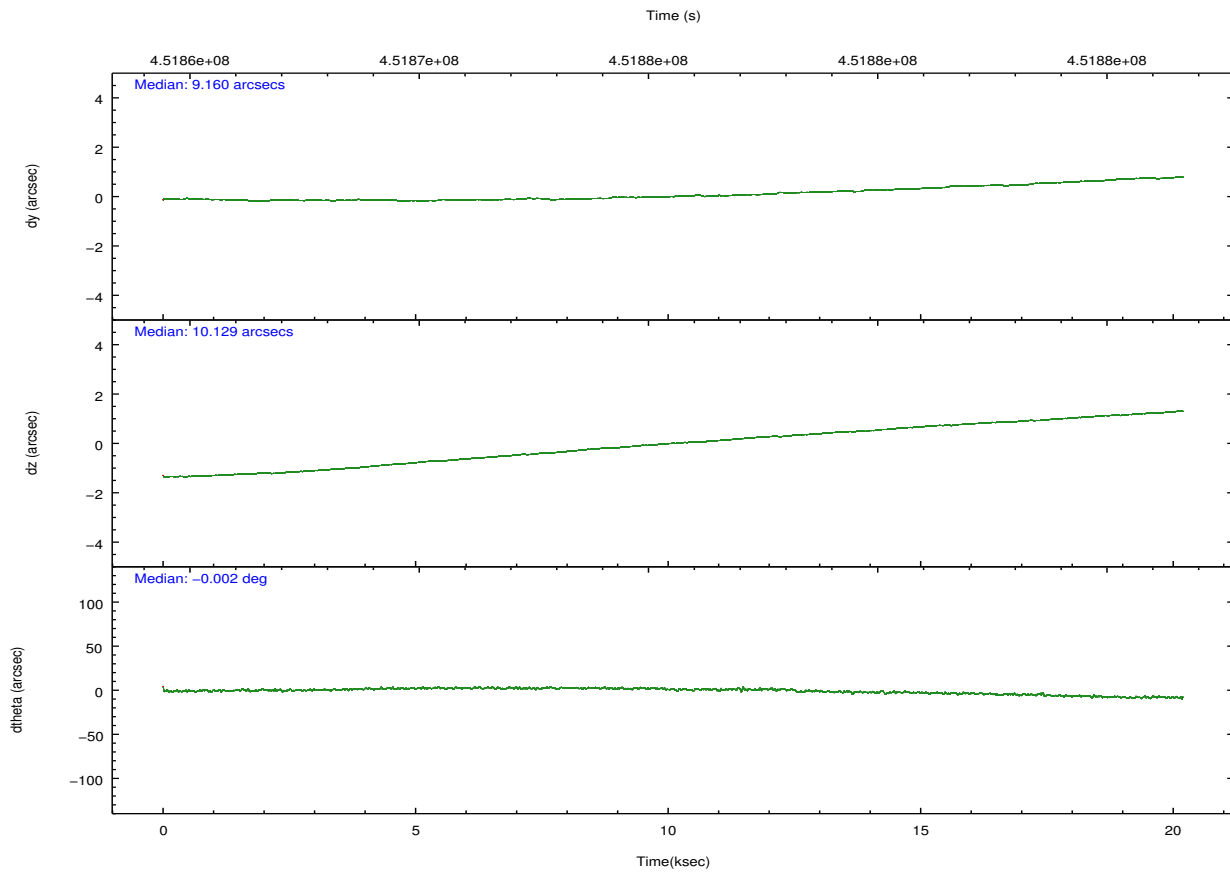
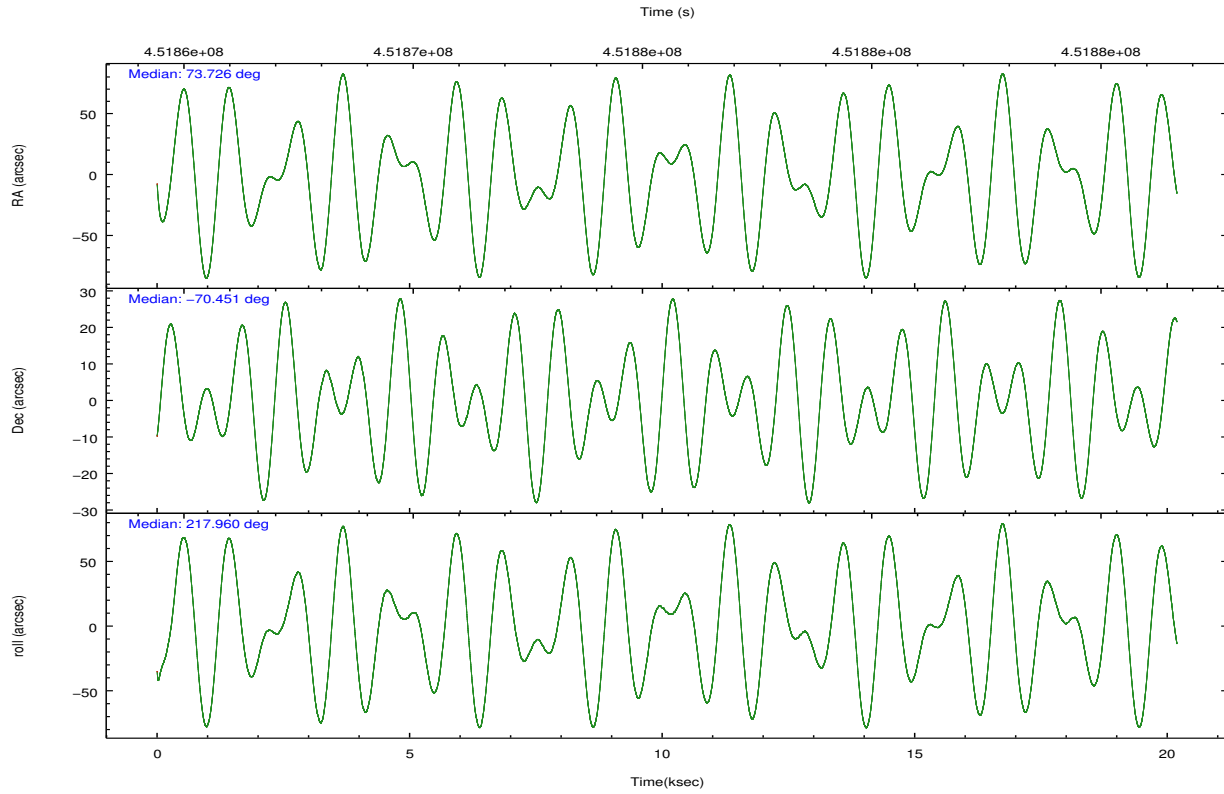
	segment 1	segment 2	segment 3
level 1 events	642004	720078	635812
rejected events	25794	25760	25884
rejected %	4%	3%	4%

2.2 Compared Parameters

Parameter	Planned	Actual	Parameter	Planned	Actual
Instrument	HRC	HRC	Obspar format version number	7	7
Detector	HRC-S	HRC-S	Obspar file type	PREDICTED	ACTUAL
Grating	LETG	LETG	Obspar update status	NONE	UPDATED
Data mode	OBSERVING	OBSERVING			
Observation mode	POINTING	POINTING			
[deg] Pointing RA	73.753469	73.72544181144649			
[deg] Pointing Dec	-70.424349	-70.45142524724378			
[deg] Pointing Roll	217.921226	217.9621256950686			
[mm] SIM focus pos	-1.429586	-1.428180813131781			
[mm] SIM defocus	0.1037507710433287	0.1051558262725154			
[mm] SIM translation stage pos	250.455976	250.466033080201			
[mm] SIM translation stage offset	0	-0.01005468664627074			
[s] Observation start time (MET)	451865632.184000	451864593.25581			
Observation start date	2012-04-26T22:12:46	2012-04-26T21:56:33			
[s] Observation end time (MET)	451885632.184000	451886432.41947			
Observation end date	2012-04-27T03:46:06	2012-04-27T04:00:32			

2.3 Aspect



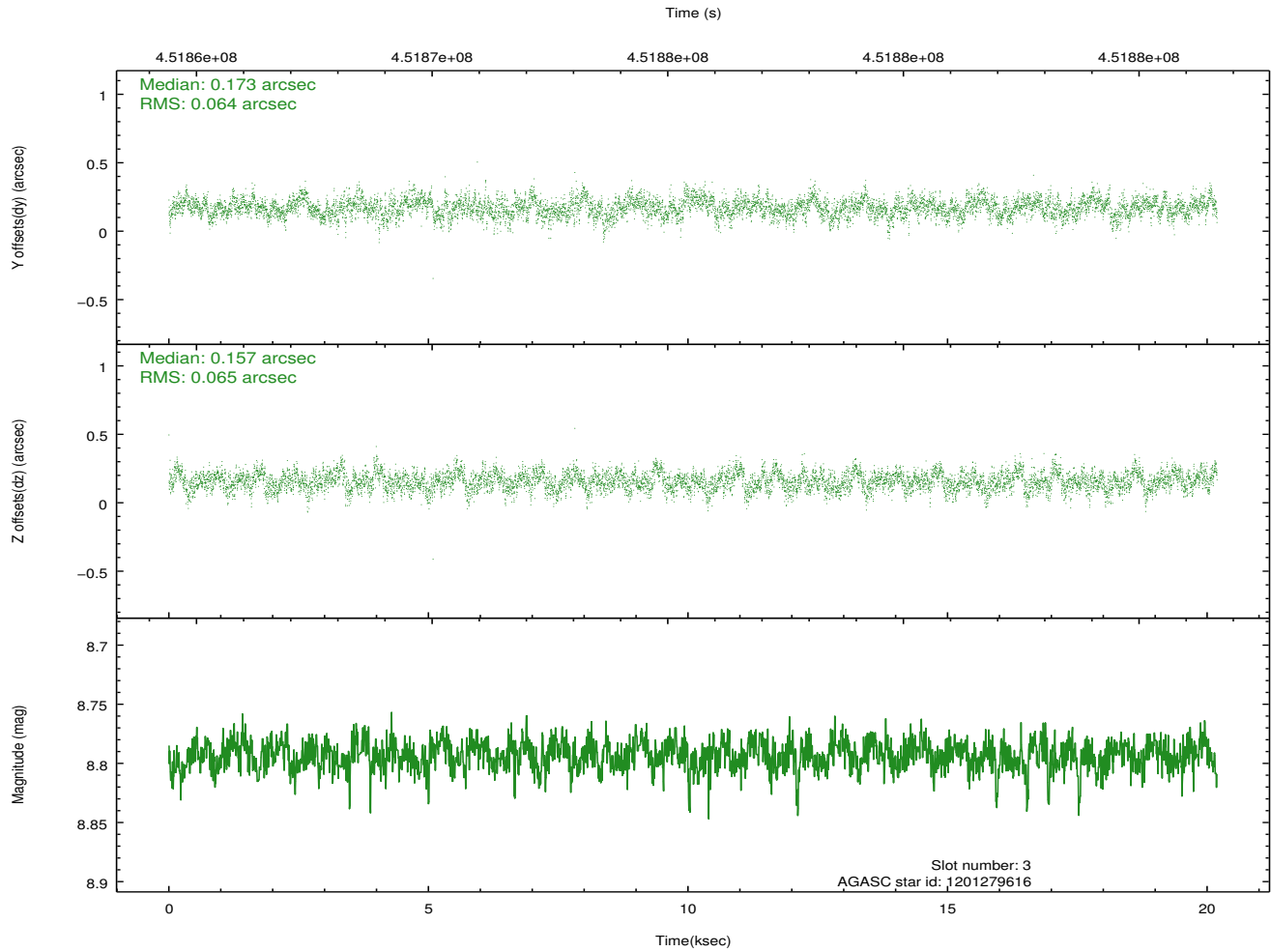
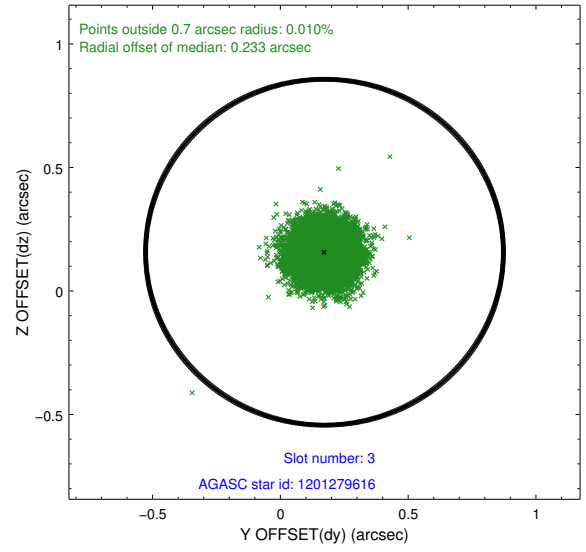
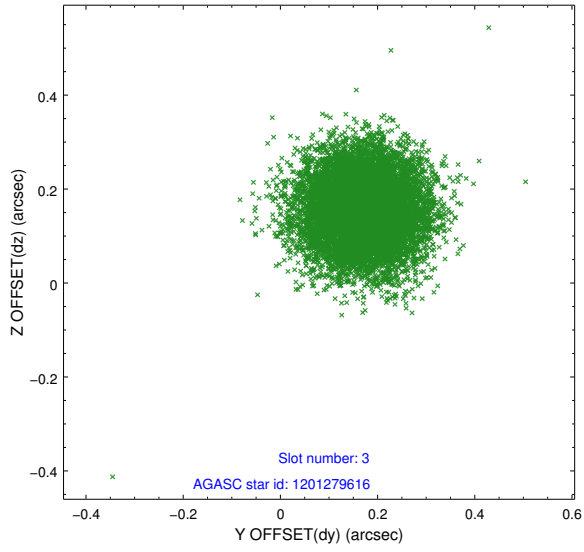


Slot Statistics

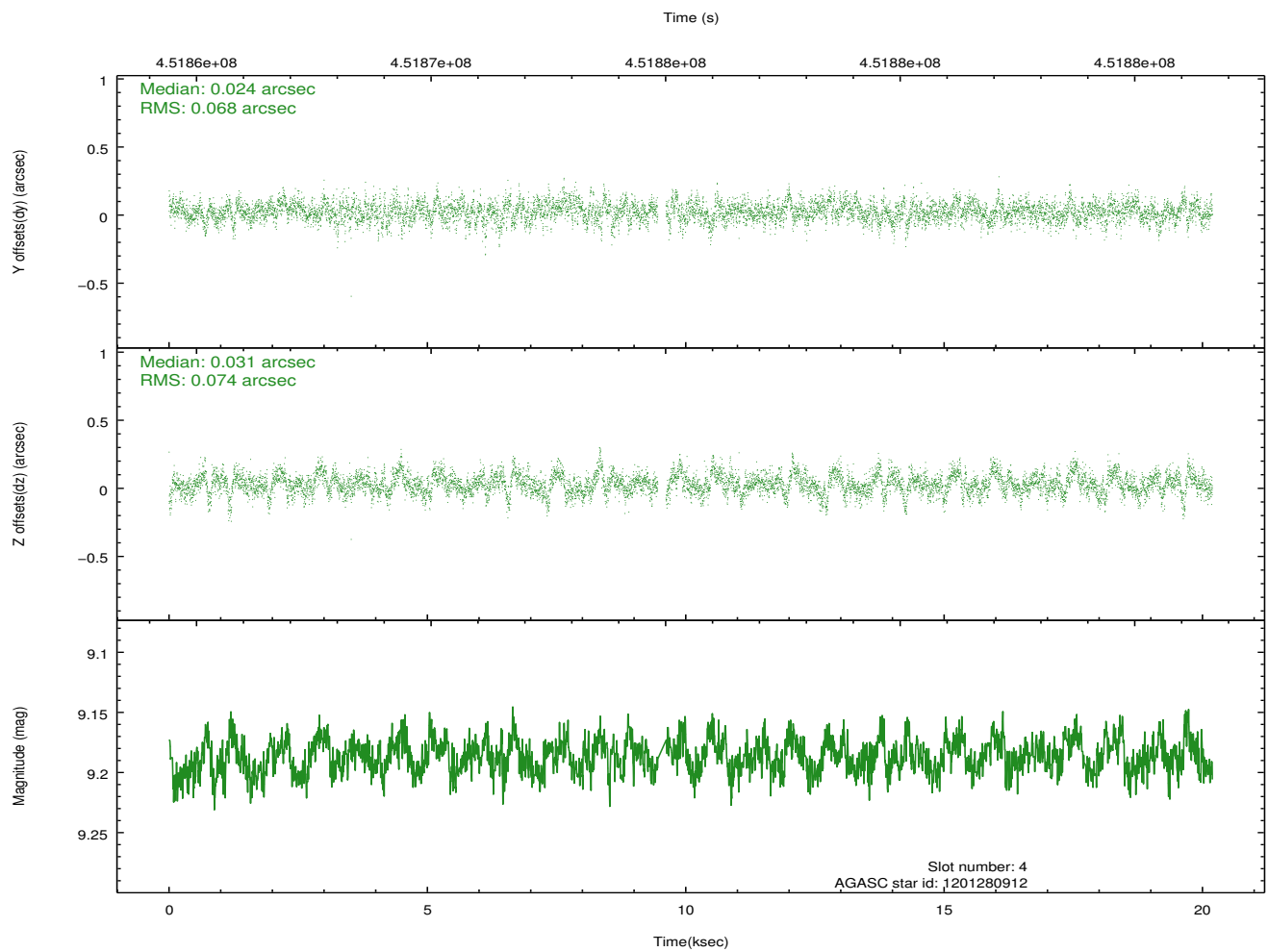
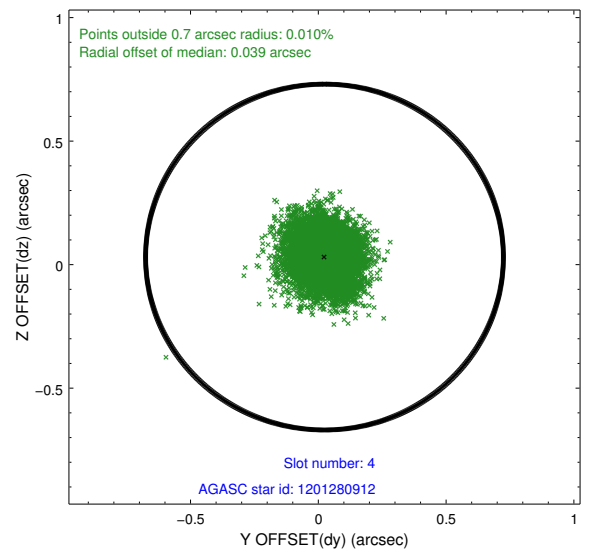
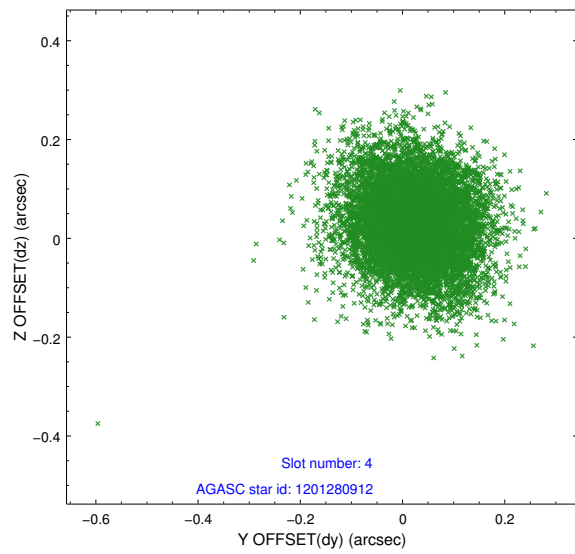
slot	status	id	mag	n_pts	med_dy	med_dz	dr1	dr2	ra	dec	mean_y	mean_z
0	FID	HRC-S-2	6.93	4925	0.157	-0.111	0.040	0.063	0.000000	0.000000	1236.20	-451.40
1	FID	HRC-S-3	6.97	4925	0.011	-0.089	0.016	0.027	0.000000	0.000000	-1166.07	570.76
2	FID	HRC-S-4	6.91	4925	0.234	-0.097	0.043	0.062	0.000000	0.000000	1234.65	573.45
3	GUIDE	1201279616	8.79	9845	0.173	0.157	0.097	0.157	74.529880	-70.149234	-1353.15	-193.04
4	GUIDE	1201280912	9.19	9764	0.024	0.031	0.106	0.176	75.042660	-70.451060	-1155.63	1043.11
5	GUIDE	1201281096	7.85	9846	0.028	-0.044	0.076	0.127	75.164495	-70.623988	-875.58	1617.78
6	GUIDE	1201281960	8.44	9843	-0.107	-0.011	0.085	0.141	74.154745	-70.782200	417.28	1309.70
7	GUIDE	1201282768	7.06	9849	-0.114	-0.138	0.083	0.135	74.211597	-70.925091	684.17	1755.00

2.4 Star Slots

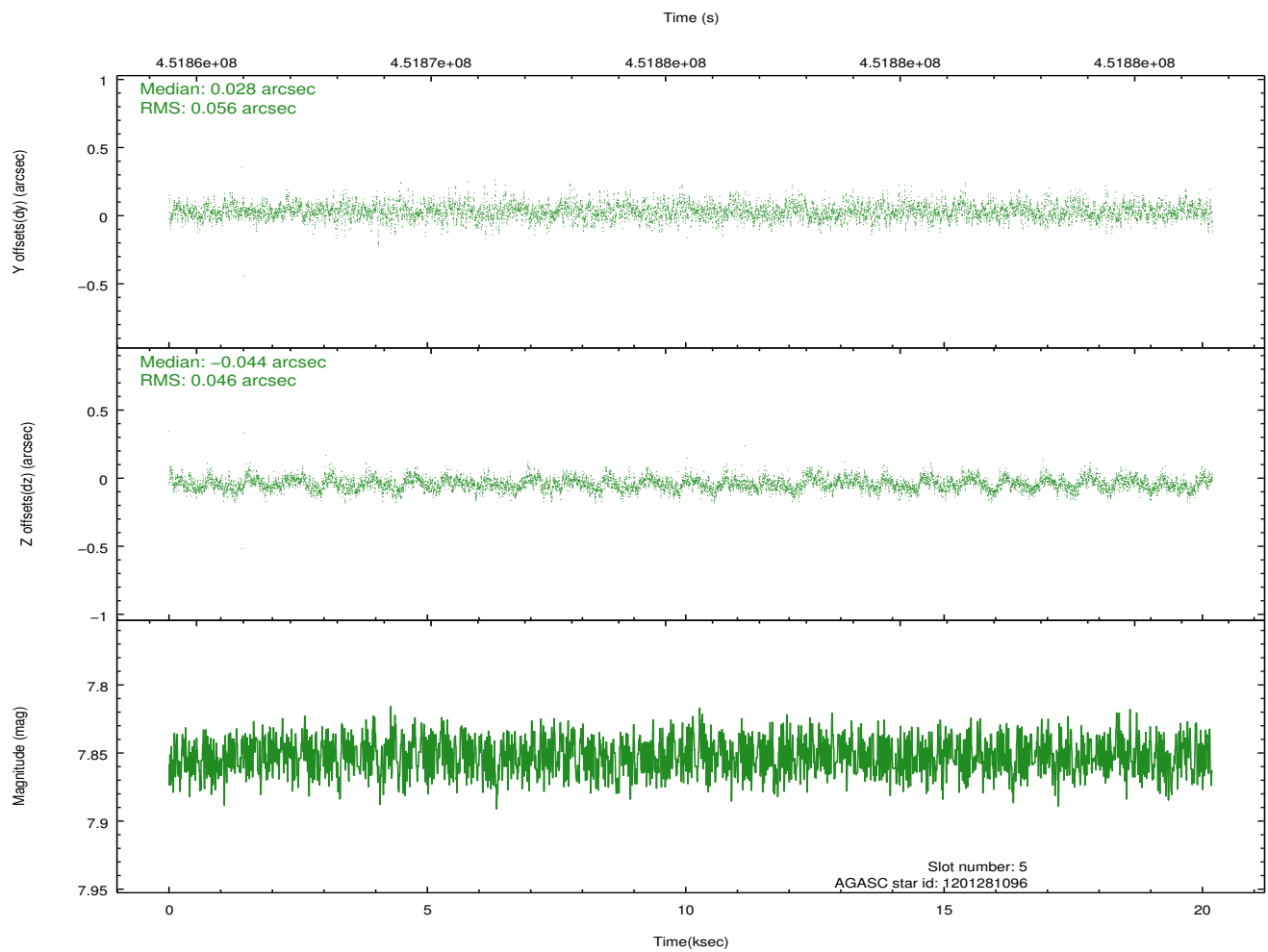
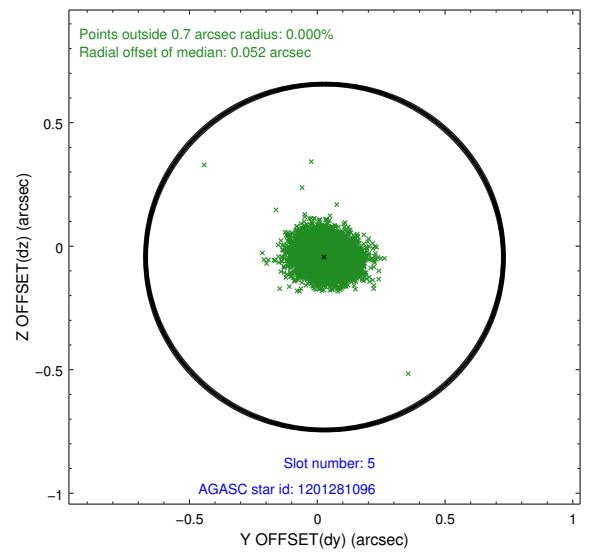
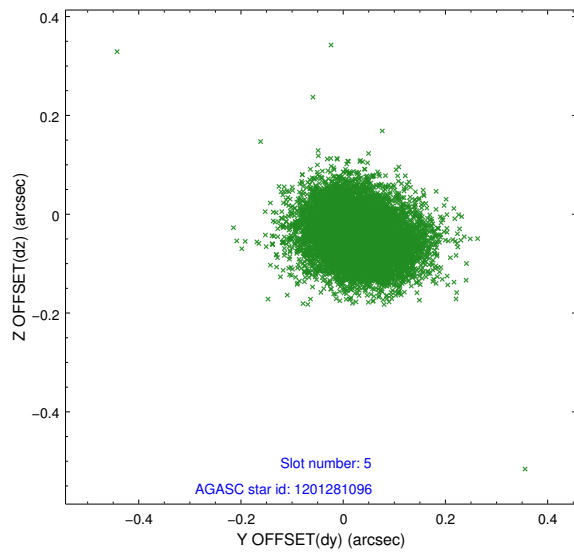
2.4.1 Slot 3



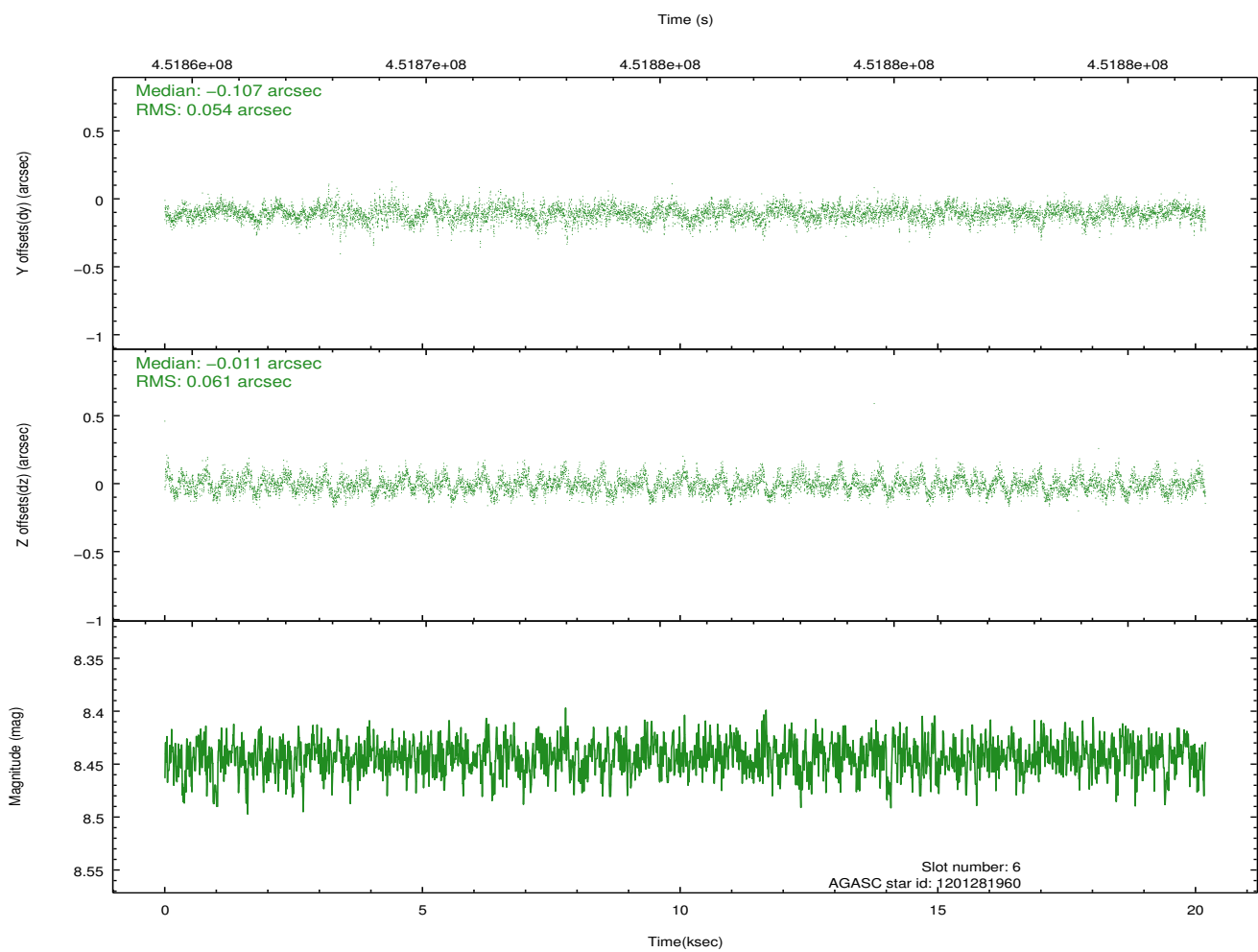
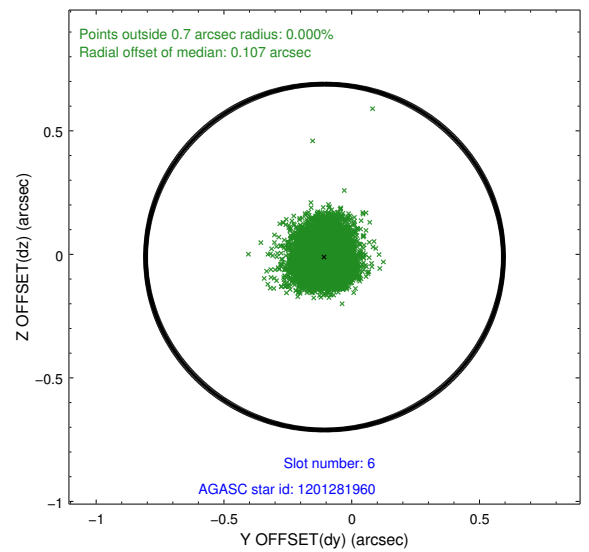
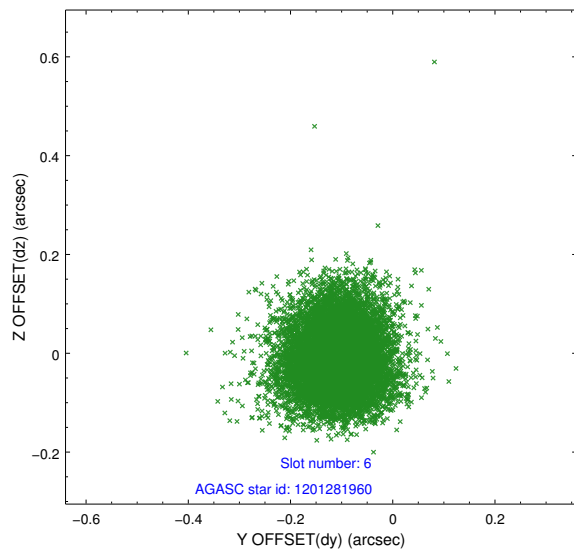
2.4.2 Slot 4



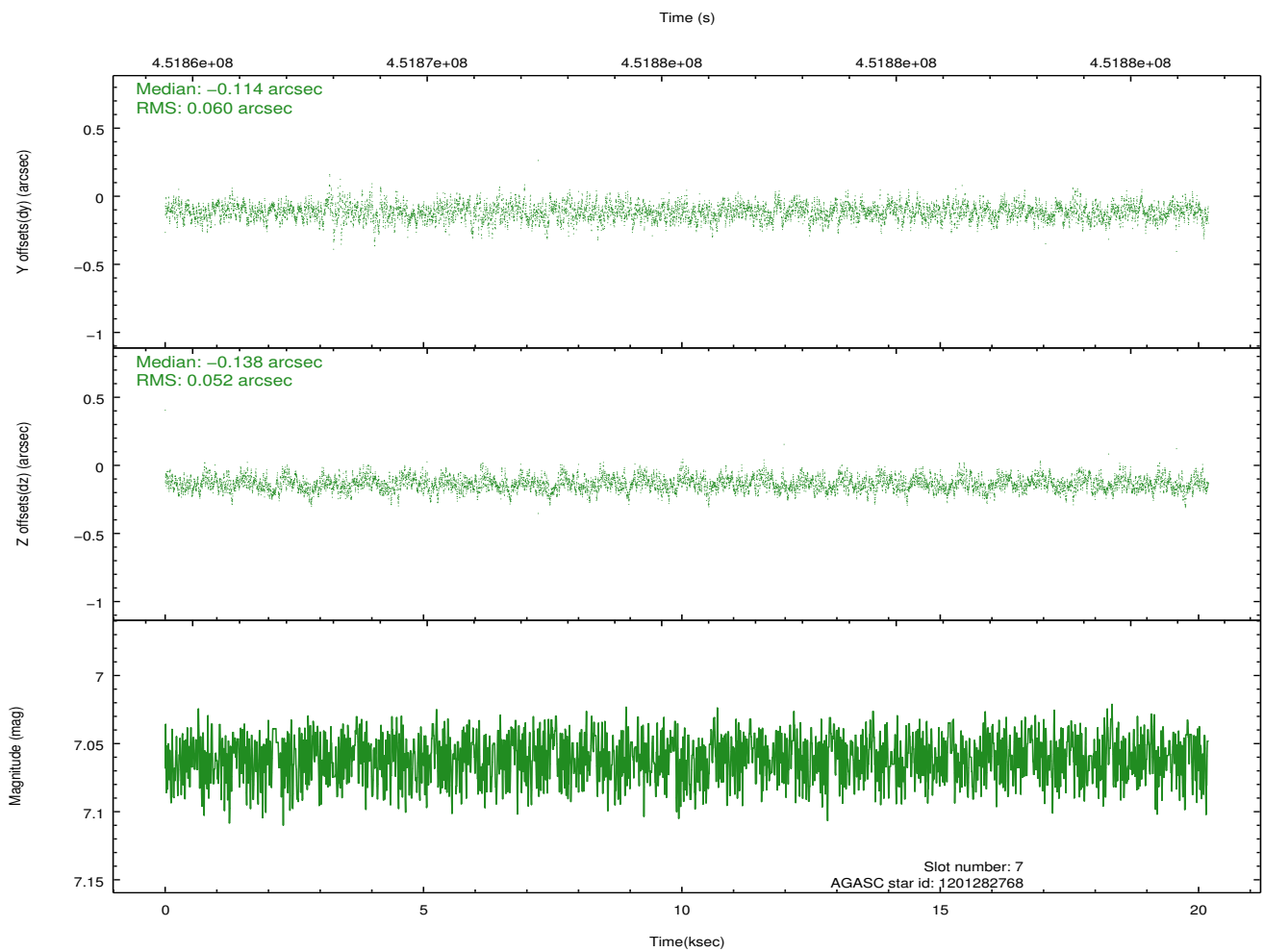
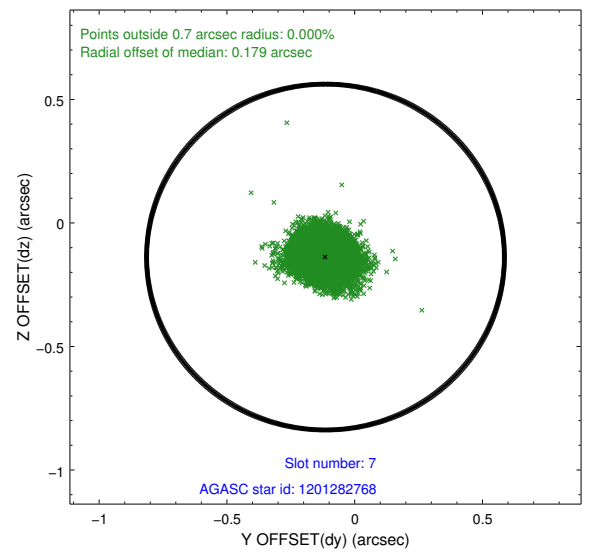
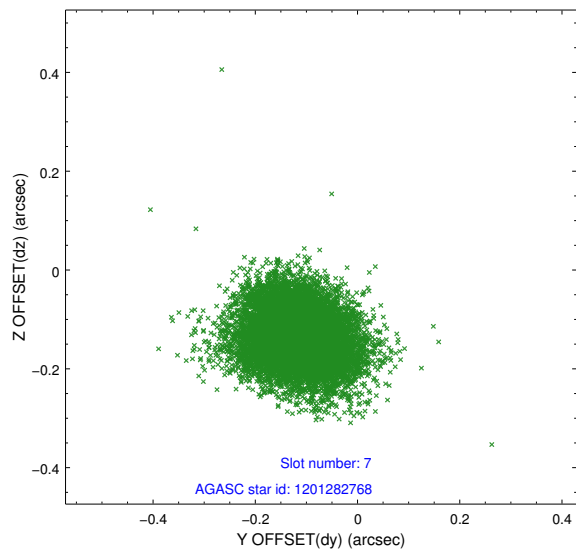
2.4.3 Slot 5



2.4.4 Slot 6

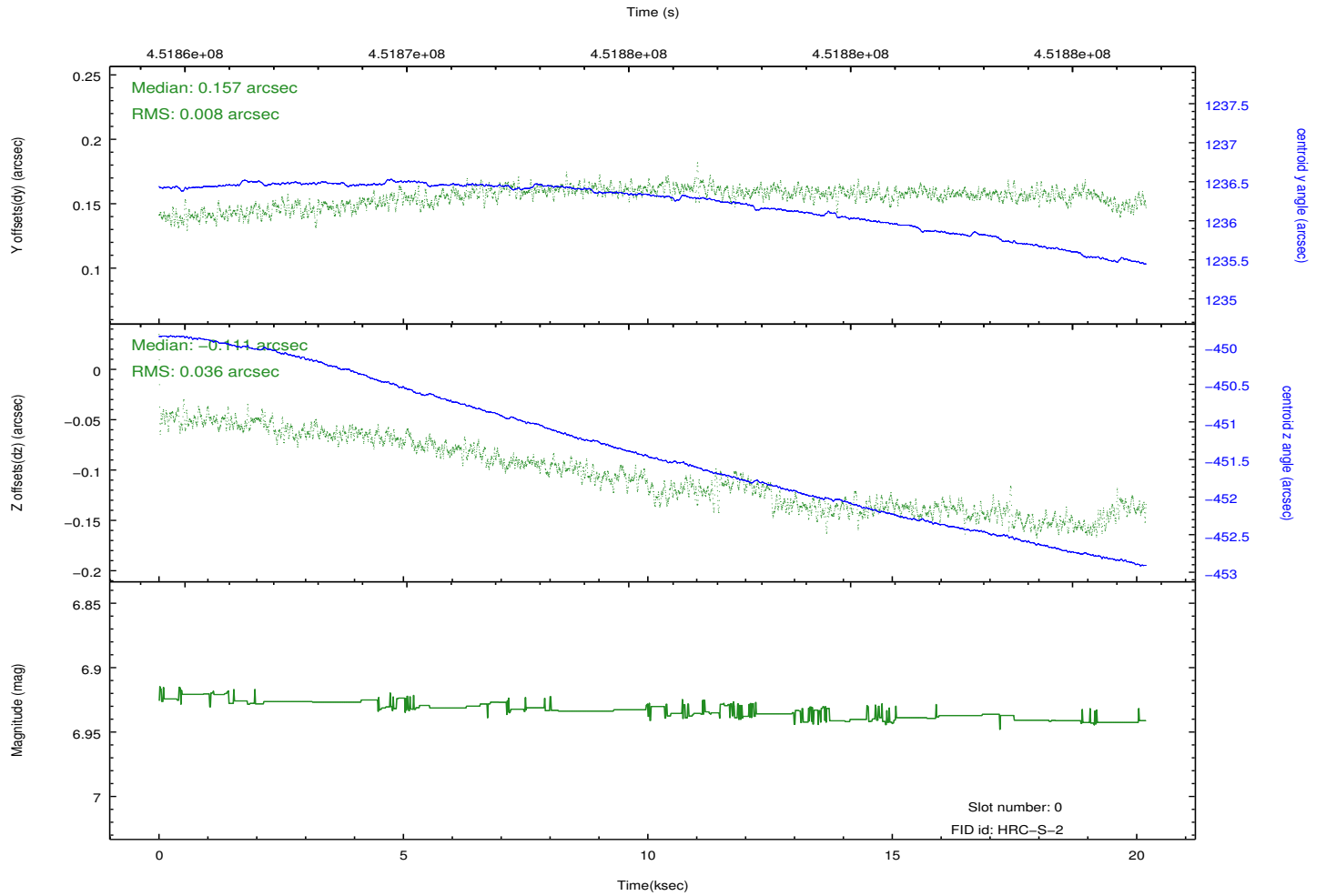
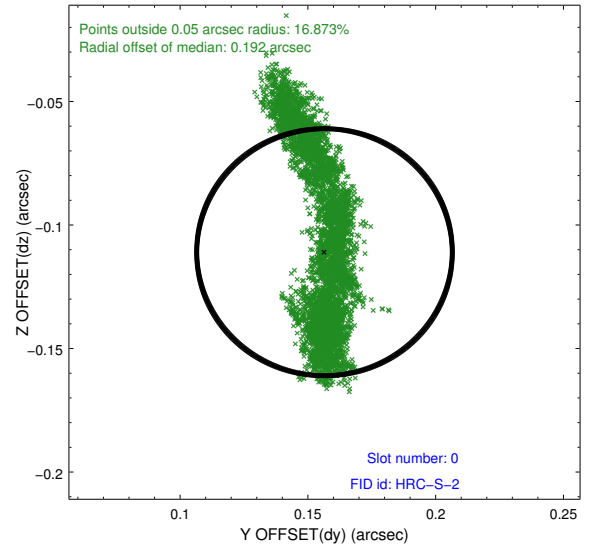
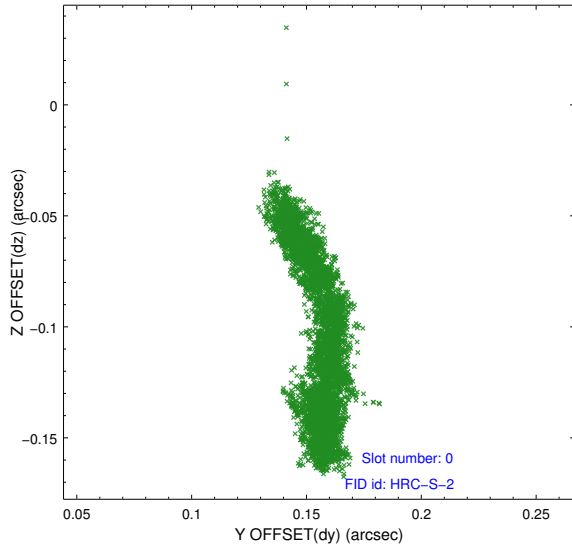


2.4.5 Slot 7

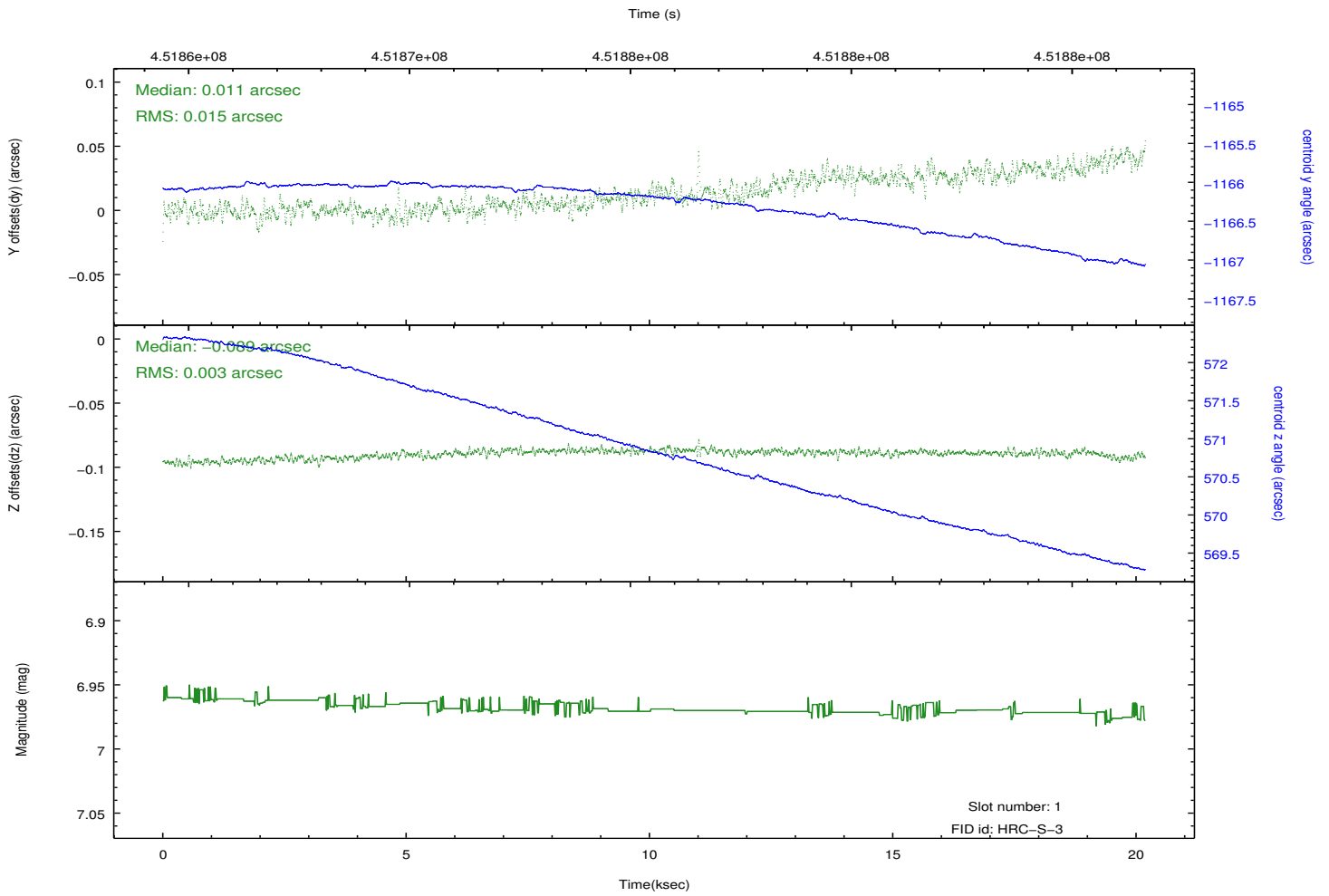
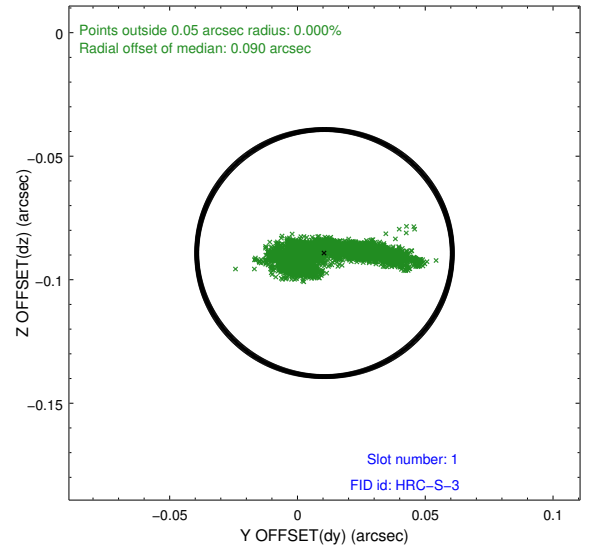
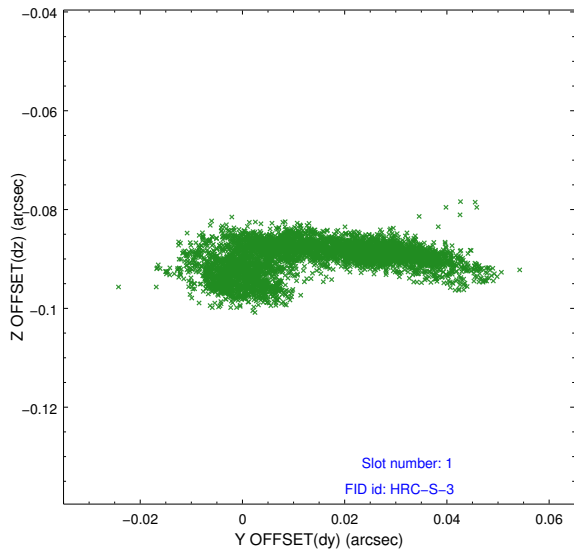


2.5 FID Slots

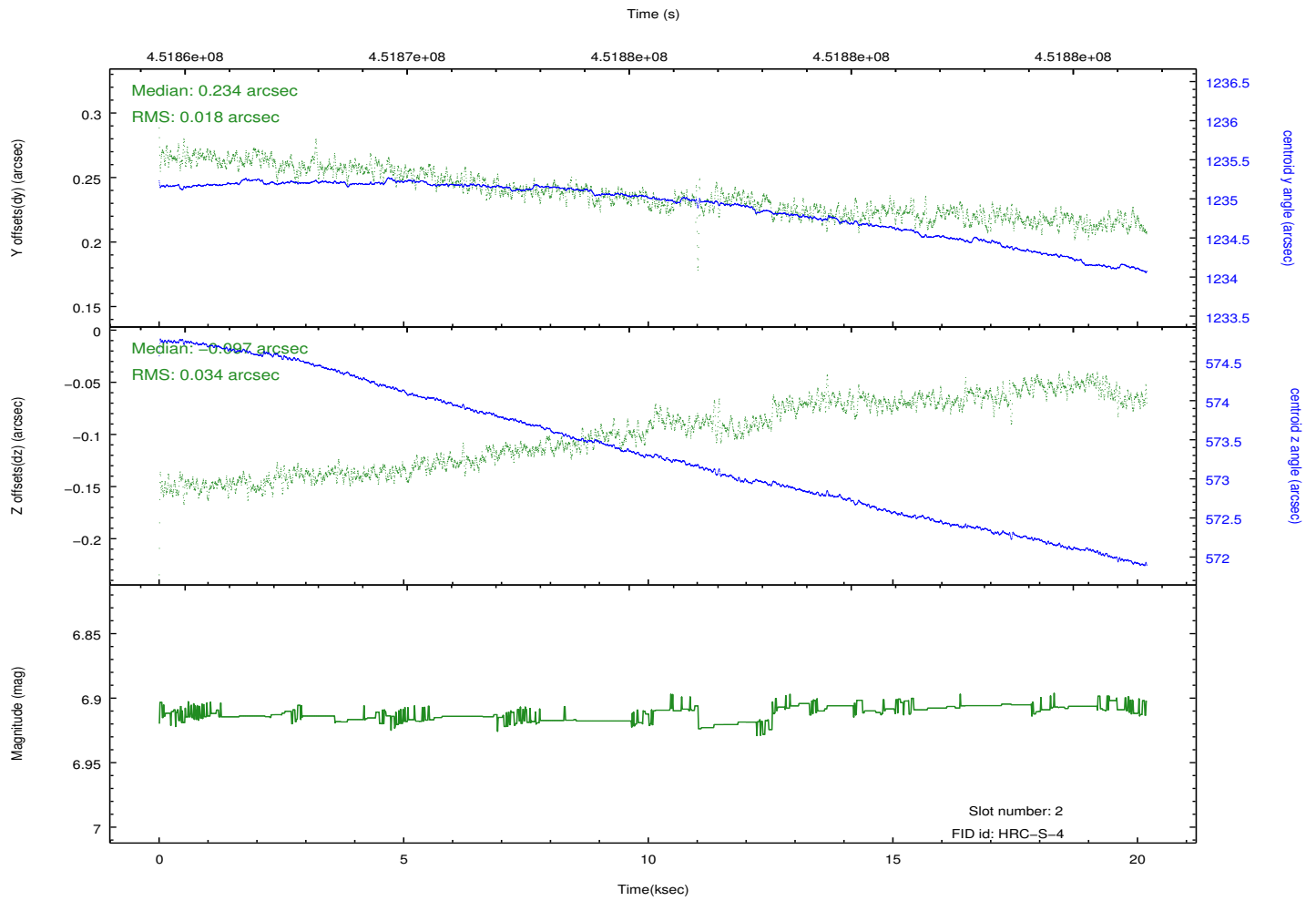
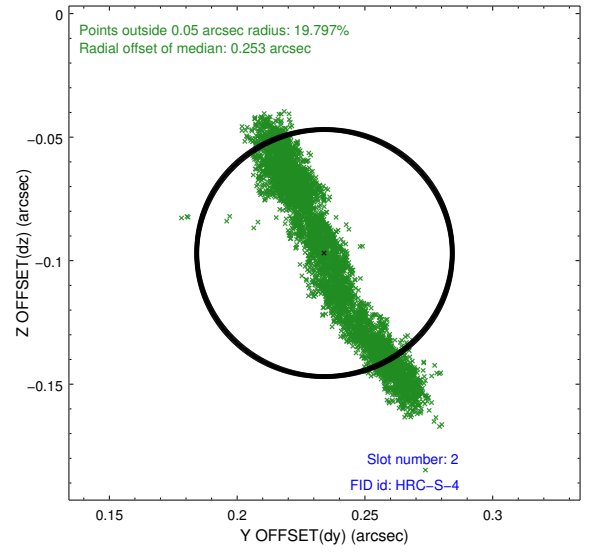
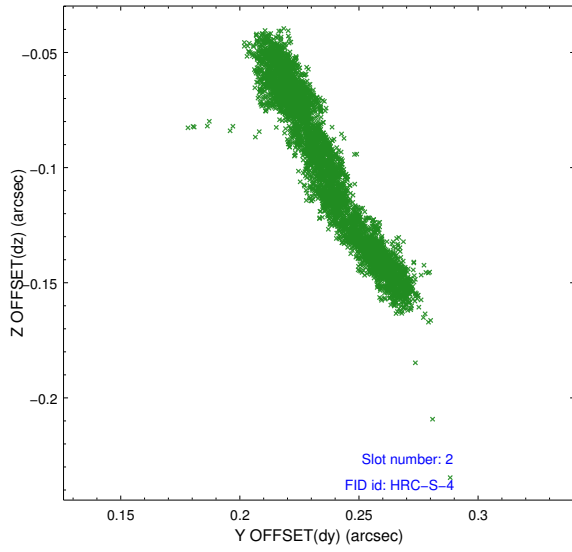
2.5.1 Slot 0



2.5.2 Slot 1

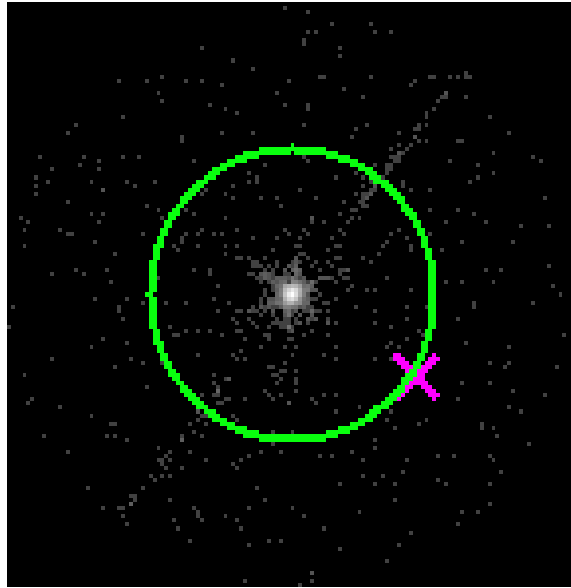


2.5.3 Slot 2

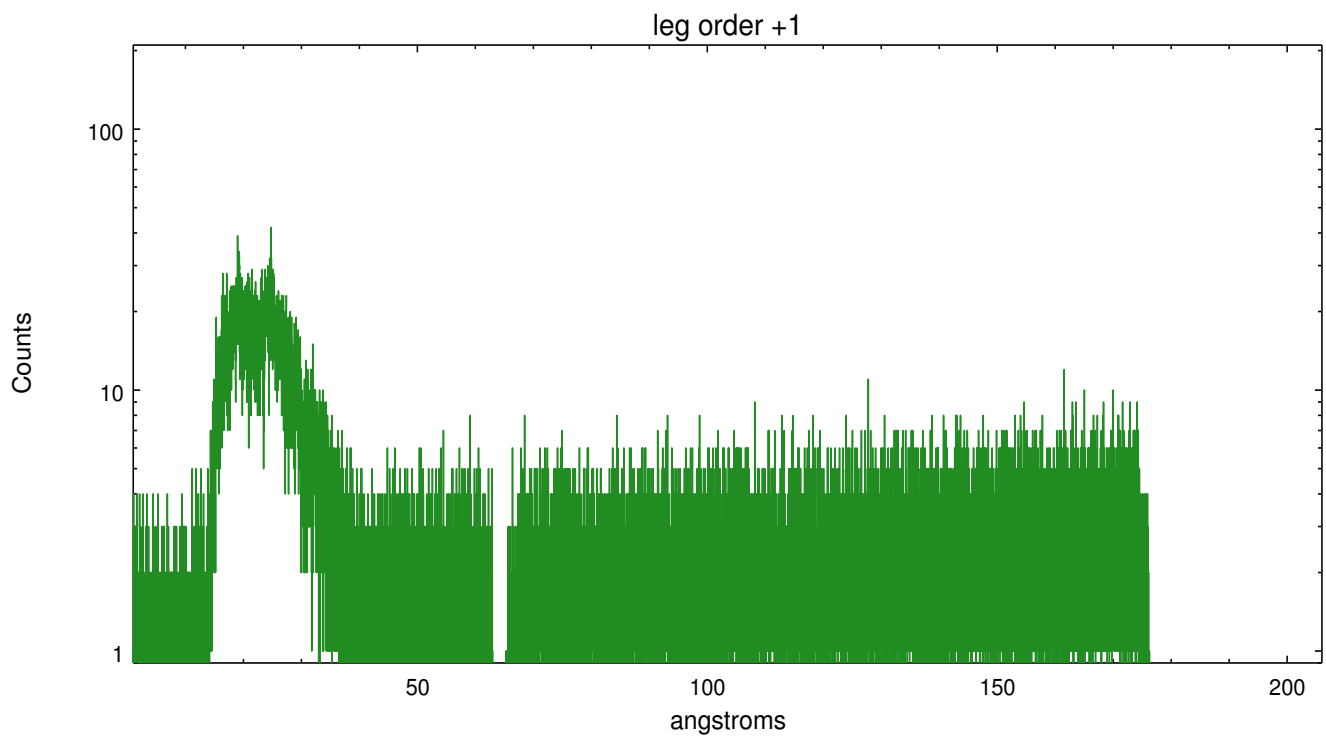
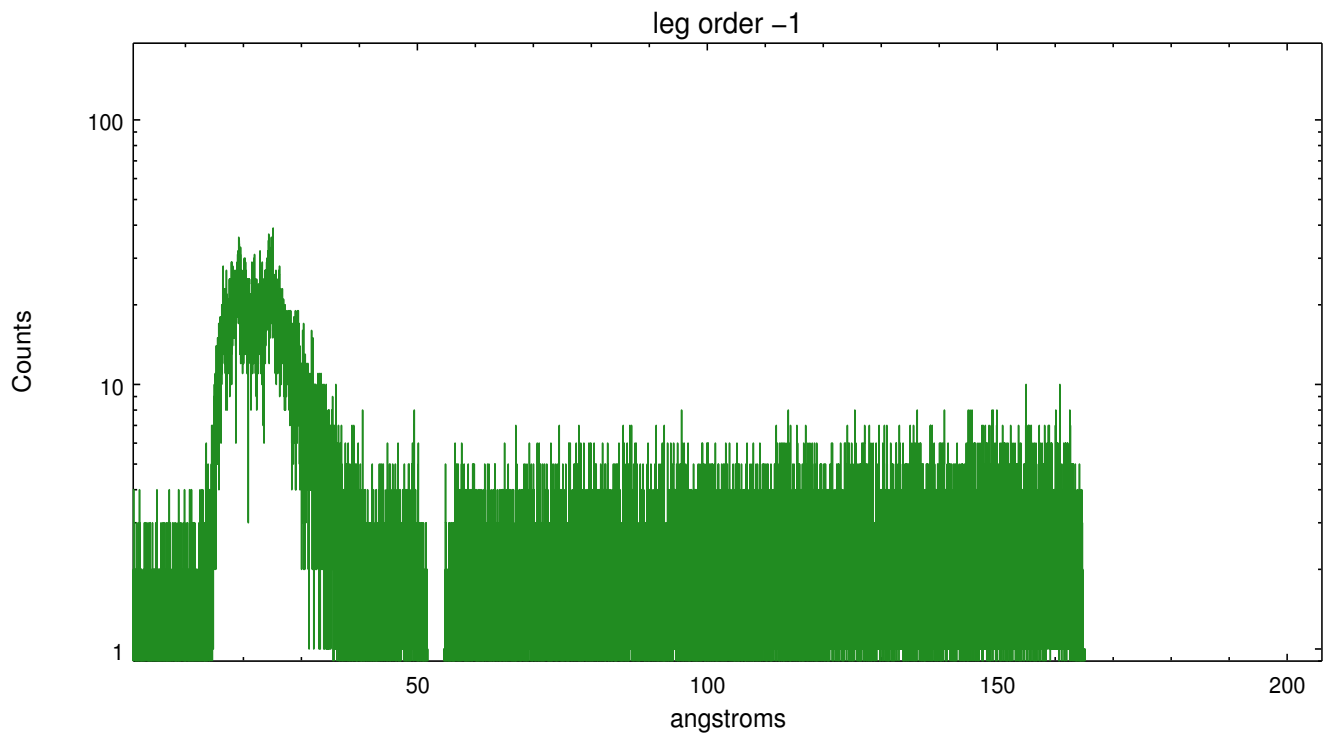


3 Gratings

3.1 LETG Arm



LETG Zero Order



A Summary

A.1 Status

V&V Scientist	Joy Nichols
V&V Date (YYYY-MM-DD)	2012.08.10
V&V Edition	1
V&V Disposition and Status	OK
V&V Charge Time	20.189682320416

A.2 Comments