

V&V Reference Report

L2 ASCDS Version : 8.4.5

Observation 14446 - L2 Version 1
Chandra X-Ray Center

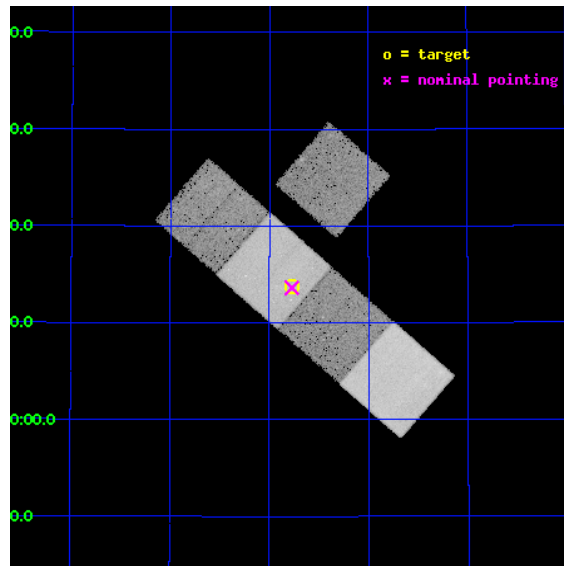
L2 Processing Date : Jun 19 2012

Contents

1	Front	2
2	OBI	3
2.1	OBI	3
2.1.1	Images	3
2.1.2	Bias	3
2.1.3	Parameters	4
2.1.4	Events	4
2.2	Compared Parameters	5
2.3	Aspect	6
2.4	Star Slots	9
2.4.1	Slot 3	9
2.4.2	Slot 4	10
2.4.3	Slot 5	11
2.4.4	Slot 6	12
2.4.5	Slot 7	13
2.5	FID Slots	14
2.5.1	Slot 0	14
2.5.2	Slot 1	15
2.5.3	Slot 2	16
A	Summary	17
A.1	Status	17
A.2	Comments	17

1 Front

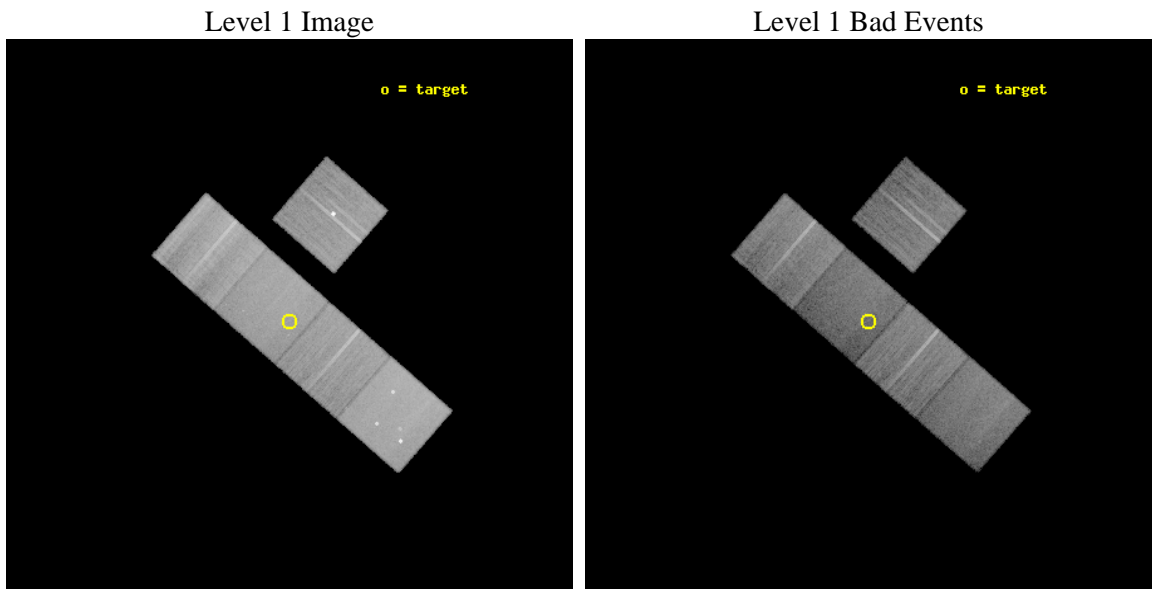
seq_num	501604	Sequence number
obs_id	14446	Observation id
title	Investigating the Emission of Extraordinarily Luminous and Unusual Supernovae	Proposal title
observer	Prof. David Pooley	Principal investigator
object	PTF12dam	Source name
dtcycle	0	
cycle	P	events from which exps? Prim/Second/Both
ra_targ	216.1925	Observer's specified target RA [deg]
dec_targ	46.230083	Observer's specified target Dec [deg]
ra_nom	216.19316363095	Nominal RA [deg]
dec_nom	46.227097971826	Nominal Dec [deg]
roll_nom	221.1461455531	Nominal Roll [deg]
revision	1	Processing version of data
ontime	34069.000262022	Sum of GTIs [s]
livetime	33623.863692366	Livetime [s]
ontime3	34065.859271646	Sum of GTIs [s]
ontime5	34069.000262022	Sum of GTIs [s]
ontime6	34062.718321264	Sum of GTIs [s]
ontime7	34069.000262022	Sum of GTIs [s]
ontime8	34059.577251196	Sum of GTIs [s]
l2events	274828	Number of level 2 events



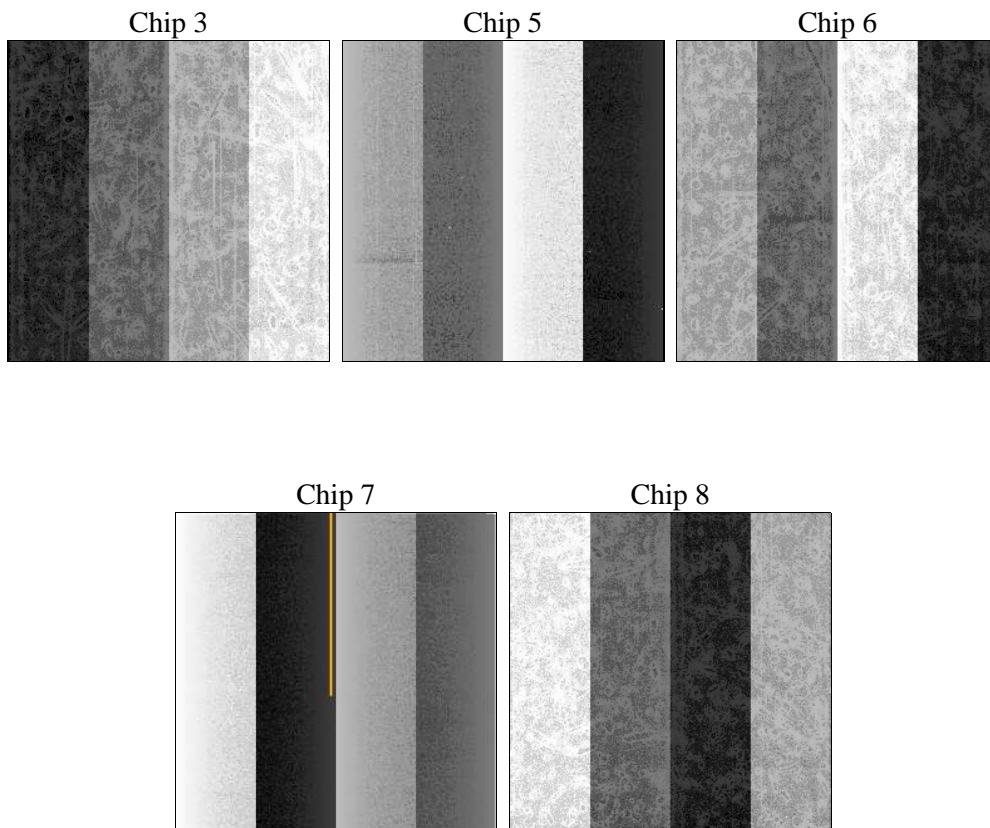
2 OBI

2.1 OBI

2.1.1 Images



2.1.2 Bias



2.1.3 Parameters

obi_num	0	Obi number	sched_exp_time	34007.039000	[s] Scheduled observation exposure time
ascdsver	8.4.5	Processing system revision	ontime	34069.000262022	Sum of GTIs [s]
caldbver	4.4.10	 	ontime3	34065.859271646	Sum of GTIs [s]
date	2012-06-19T22:14:22	Date and time of file creation	ontime5	34069.000262022	Sum of GTIs [s]
revision	1	Processing version of data	ontime6	34062.718321264	Sum of GTIs [s]
			ontime7	34069.000262022	Sum of GTIs [s]
			ontime8	34059.577251196	Sum of GTIs [s]
			l1events	1048609	Number of level 1 events

2.1.4 Events

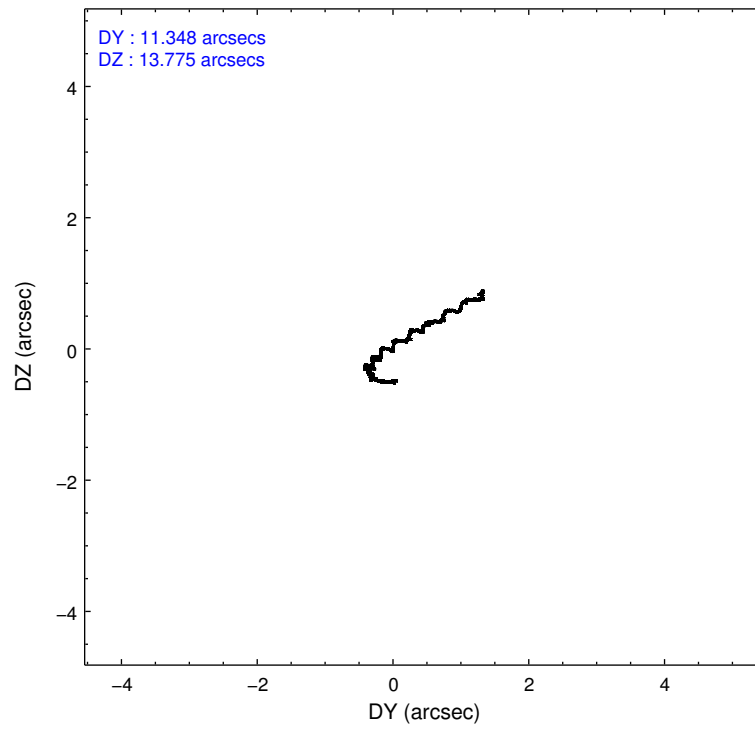
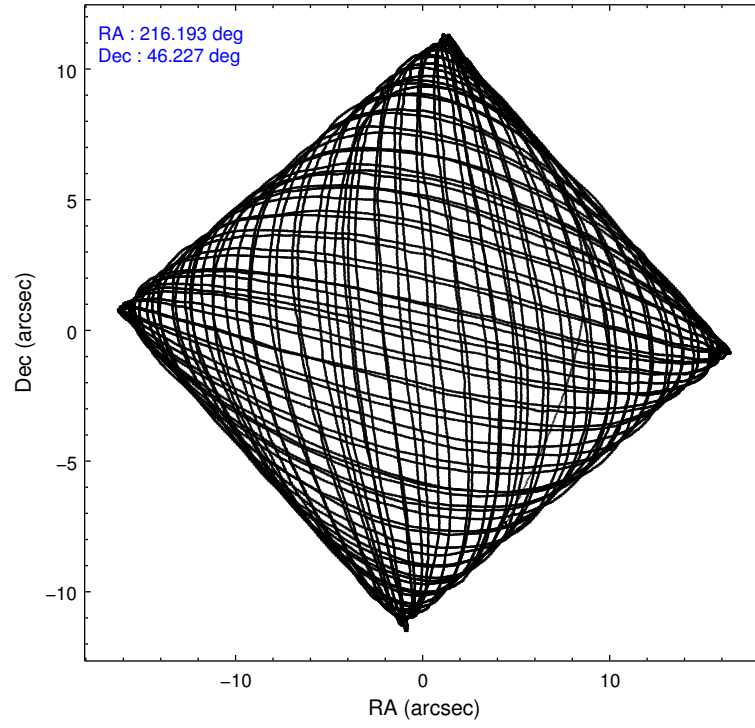
	ccd 3	ccd 5	ccd 6	ccd 7	ccd 8
level 1 events	172942	265815	175648	199830	234374
rejected events	145882	124838	154871	104675	167231
rejected %	84%	46%	88%	52%	71%

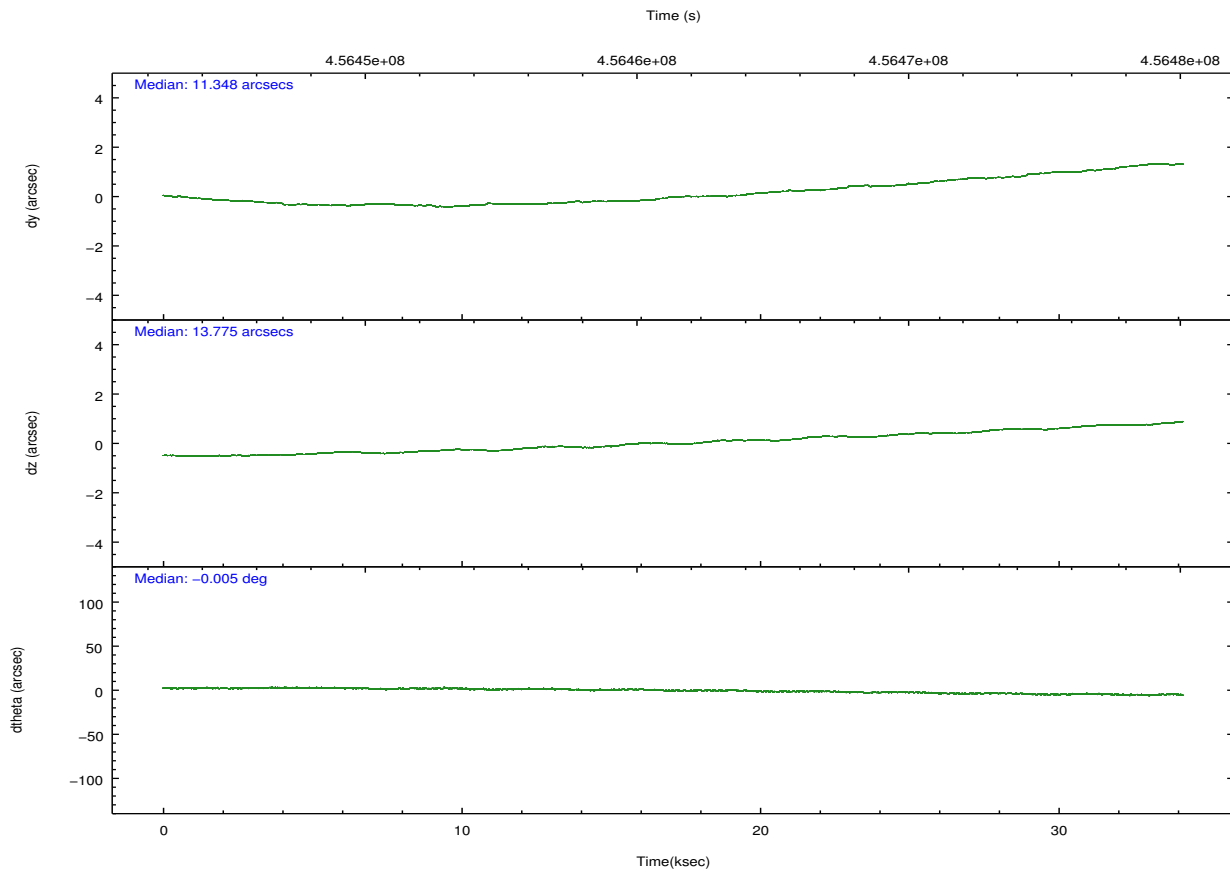
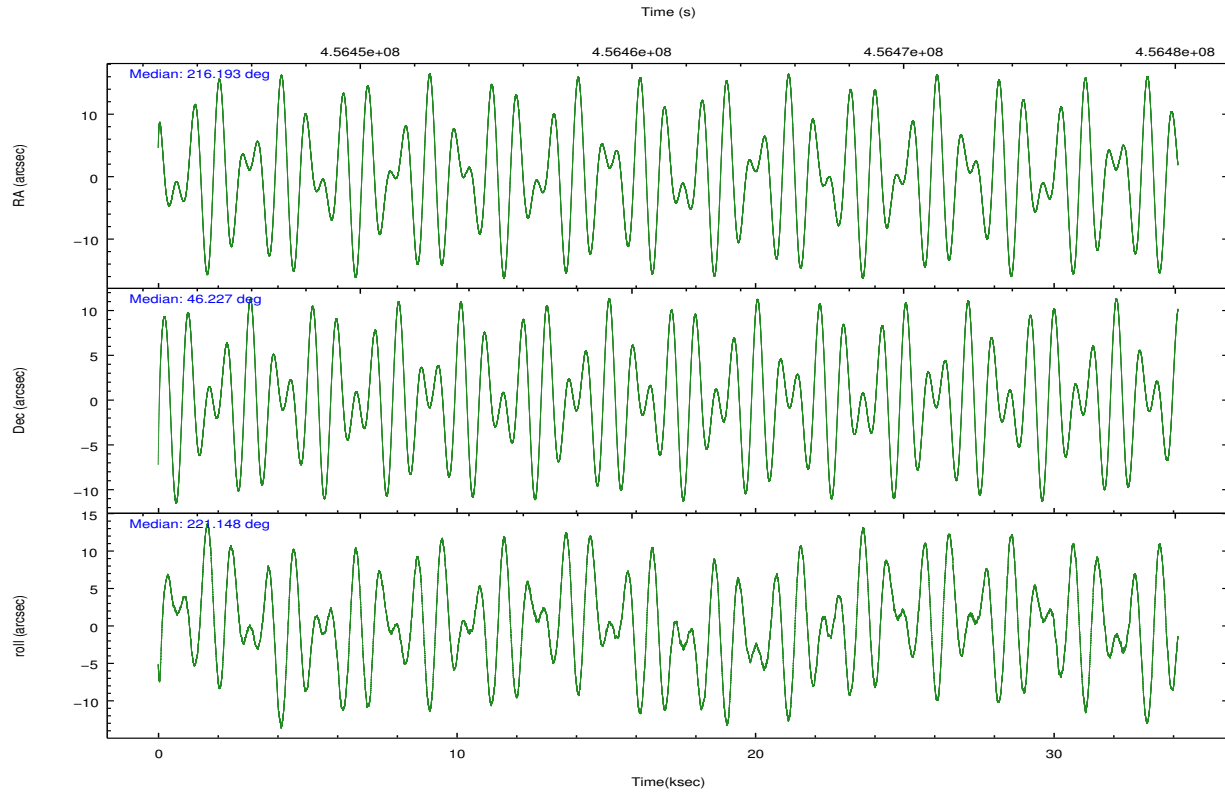
	ccd 3	ccd 5	ccd 6	ccd 7	ccd 8
grade 0 events	6798	17839	7409	9547	19255
	3%	6%	4%	4%	8%
grade 1 events	77	621	92	278	196
	0%	0%	0%	0%	0%
grade 2 events	12530	42756	4710	20183	15671
	7%	16%	2%	10%	6%
grade 3 events	2004	5427	2154	8565	7681
	1%	2%	1%	4%	3%
grade 4 events	2031	5112	2043	8496	7103
	1%	1%	1%	4%	3%
grade 5 events	7400	20558	7451	21109	11531
	4%	7%	4%	10%	4%
grade 6 events	3699	69855	4461	48370	17434
	2%	26%	2%	24%	7%
grade 7 events	138403	103647	147328	83282	155503
	80%	38%	83%	41%	66%

2.2 Compared Parameters

Parameter	Planned	Actual	Parameter	Planned	Actual
Instrument	ACIS	ACIS	Obspar format version number	7	7
Detector	ACIS-35678	ACIS-35678	Obspar file type	PREDICTED	ACTUAL
Grating	NONE	NONE	Obspar update status	NONE	UPDATED
Data mode	VFAINT	VFAINT	CCD I0 on	N	N
Observation mode	POINTING	POINTING	CCD I1 on	N	N
[deg] Pointing RA	216.205418	216.1931636309493	CCD I2 on	N	N
[deg] Pointing Dec	46.253083	46.2270979718262	CCD I3 on	O1	Y
[deg] Pointing Roll	220.980668	221.1461455531024	CCD S0 on	N	N
[mm] SIM focus pos	-0.684267	-0.6828225247311905	CCD S1 on	Y	Y
[mm] SIM defocus	0	0.001444936568705701	CCD S2 on	Y	Y
[mm] SIM translation stage pos	-190.132523	-190.1400660498719	CCD S3 on	Y	Y
[mm] SIM translation stage offset	0	0.00754346686406393	CCD S4 on	Y	Y
[s] Observation start time (MET)	456444397.184000	456443258.24562	CCD S5 on	N	N
Observation start date	2012-06-18T22:05:31	2012-06-18T21:47:38	Number of optional ACIS chips dropped	0	0
[s] Observation end time (MET)	456478404.184000	456478629.9725	On-chip summing requested	N	N
Observation end date	2012-06-19T07:32:18	2012-06-19T07:37:09	Subarray requested	NONE	NONE
Read mode	TIMED	TIMED	Alternating exposures requested	N	N
			[s] Primary exposure time	0.000000	3.1

2.3 Aspect



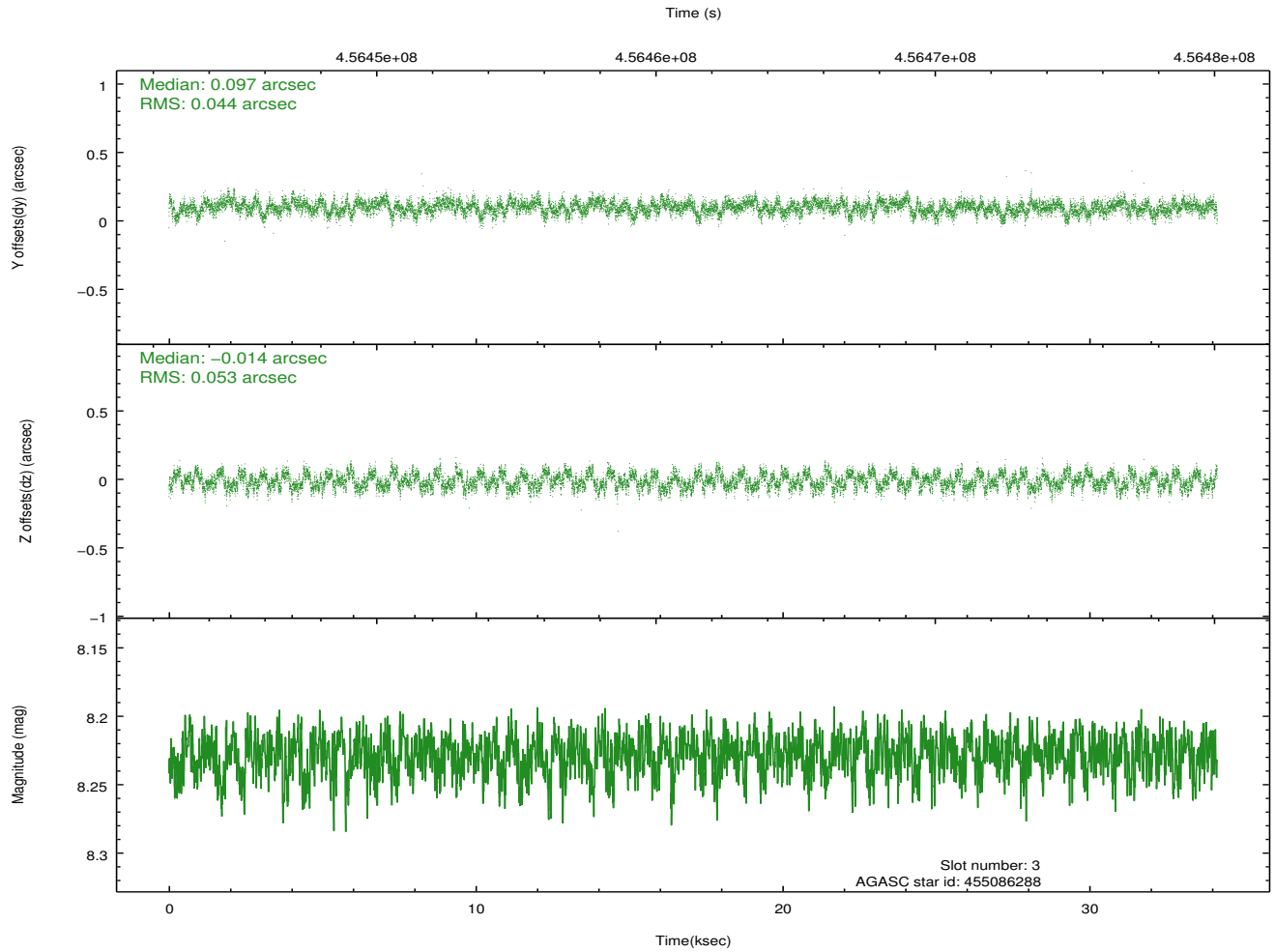
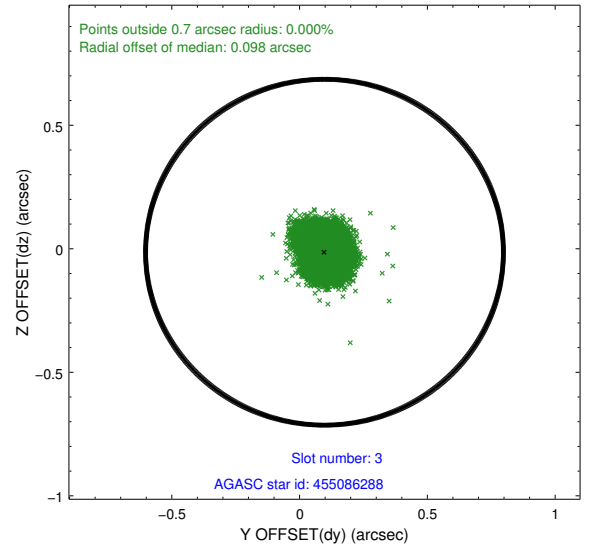
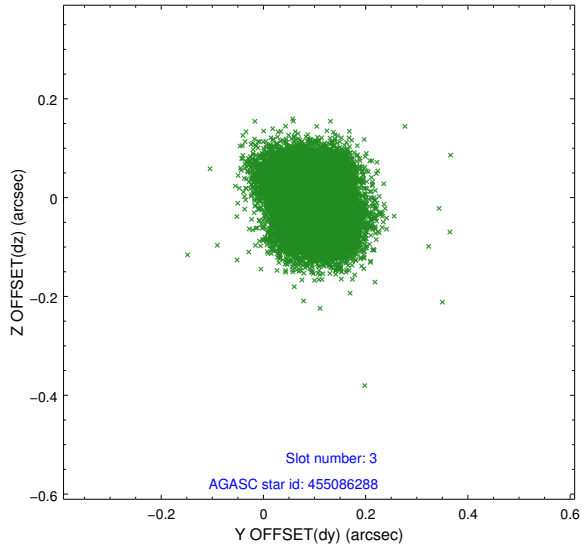


Slot Statistics

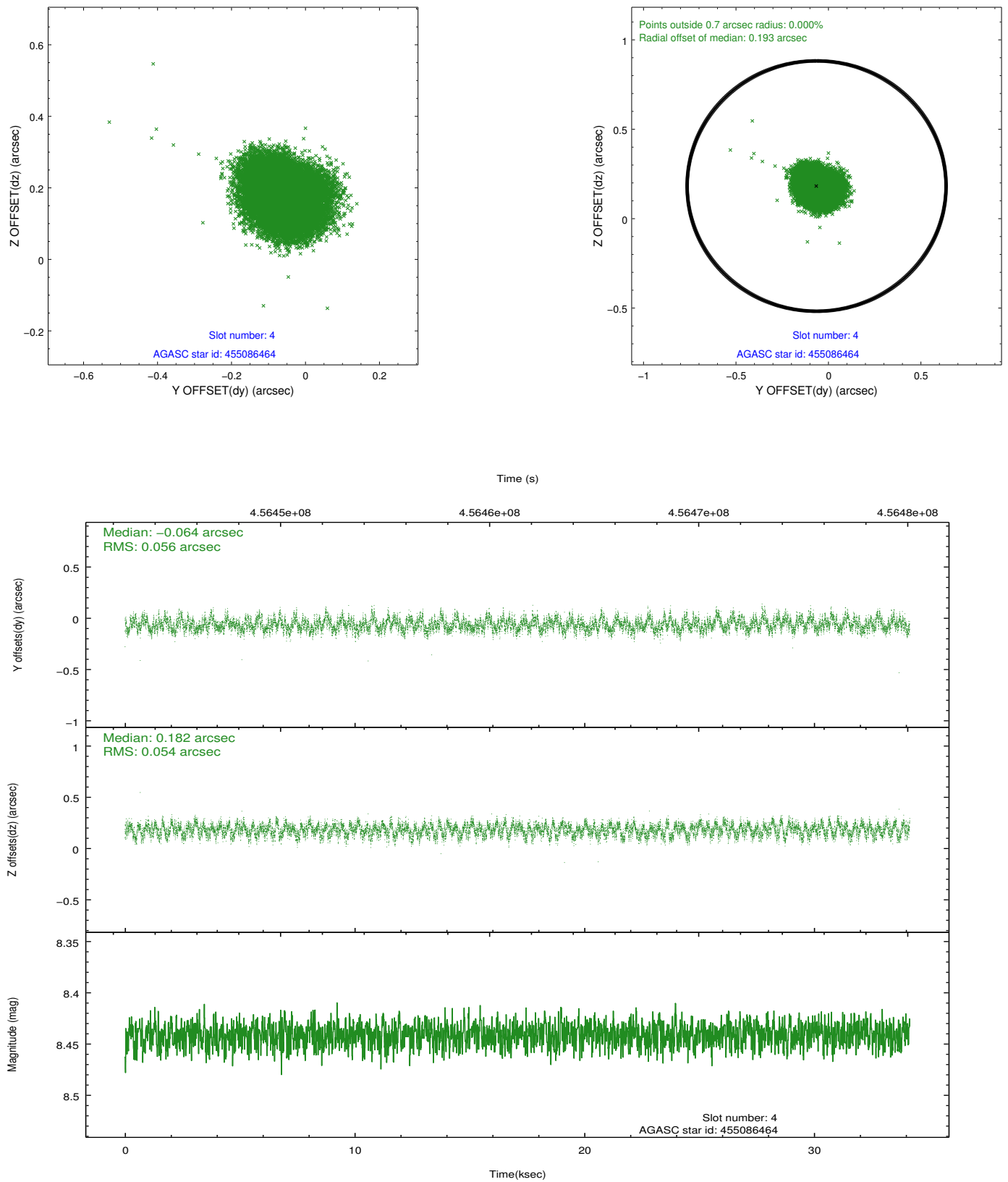
slot	status	id	mag	n_pts	med_dy	med_dz	dr1	dr2	ra	dec	mean_y	mean_z
0	FID	ACIS-S-1	7.07	8331	0.052	-0.029	0.010	0.019	0.000000	0.000000	931.66	-1730.84
1	FID	ACIS-S-4	7.07	8332	0.152	-0.000	0.009	0.017	0.000000	0.000000	2149.21	173.29
2	FID	ACIS-S-5	7.11	8332	-0.231	0.042	0.009	0.020	0.000000	0.000000	-1817.42	167.00
3	GUIDE	455086288	8.23	16654	0.097	-0.014	0.074	0.117	215.702797	46.116120	1268.25	-452.98
4	GUIDE	455086464	8.44	16662	-0.064	0.182	0.084	0.129	216.724017	46.613356	-1820.82	-141.62
5	GUIDE	455086552	9.67	16606	0.090	-0.153	0.141	0.228	215.917824	45.938415	1286.10	384.62
6	GUIDE	455089024	8.06	16663	0.083	-0.058	0.060	0.096	216.032003	46.769703	-895.43	-1685.90
7	GUIDE	455083528	8.69	16656	-0.202	0.041	0.085	0.154	217.473880	46.208869	-2297.89	2174.02

2.4 Star Slots

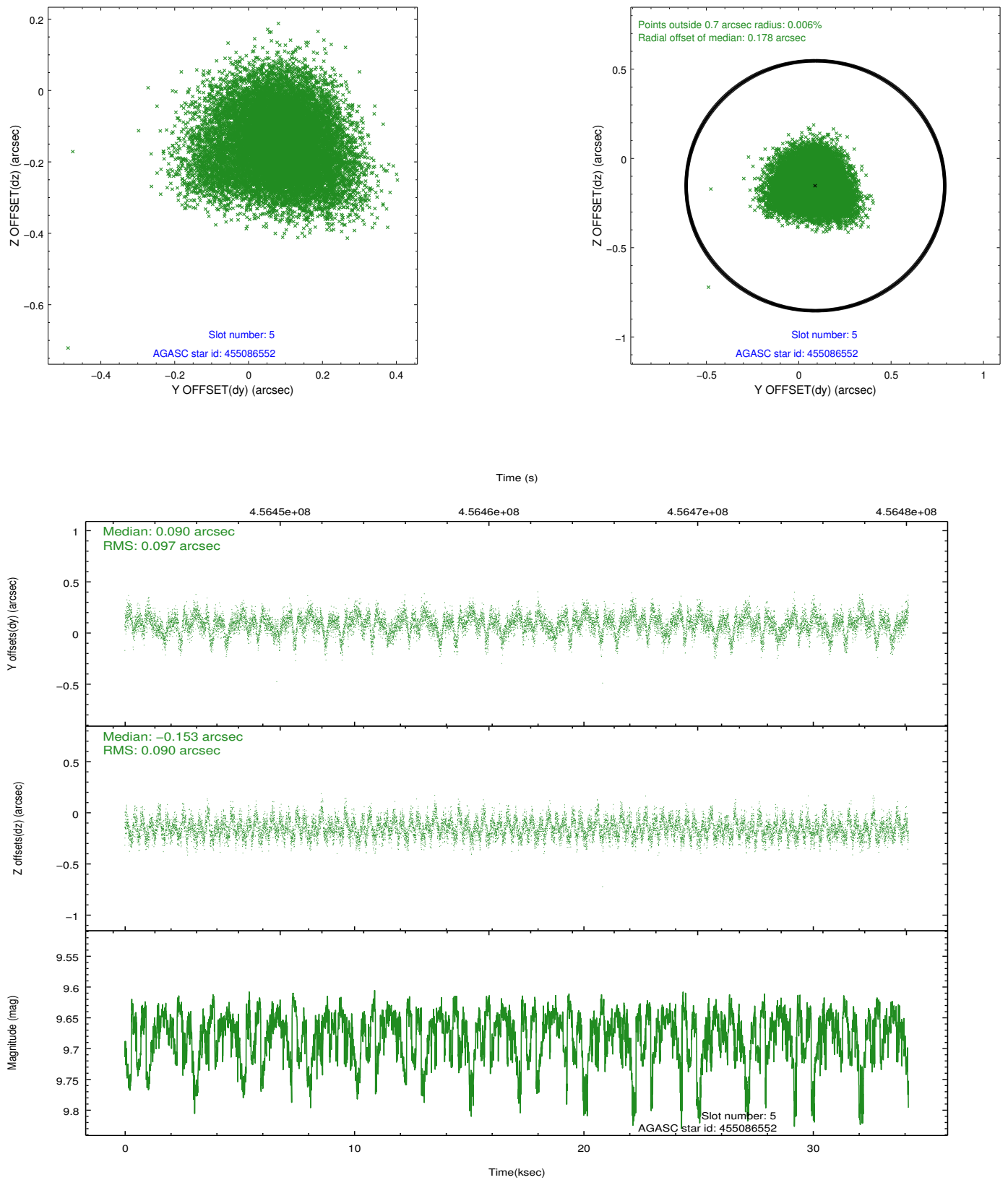
2.4.1 Slot 3



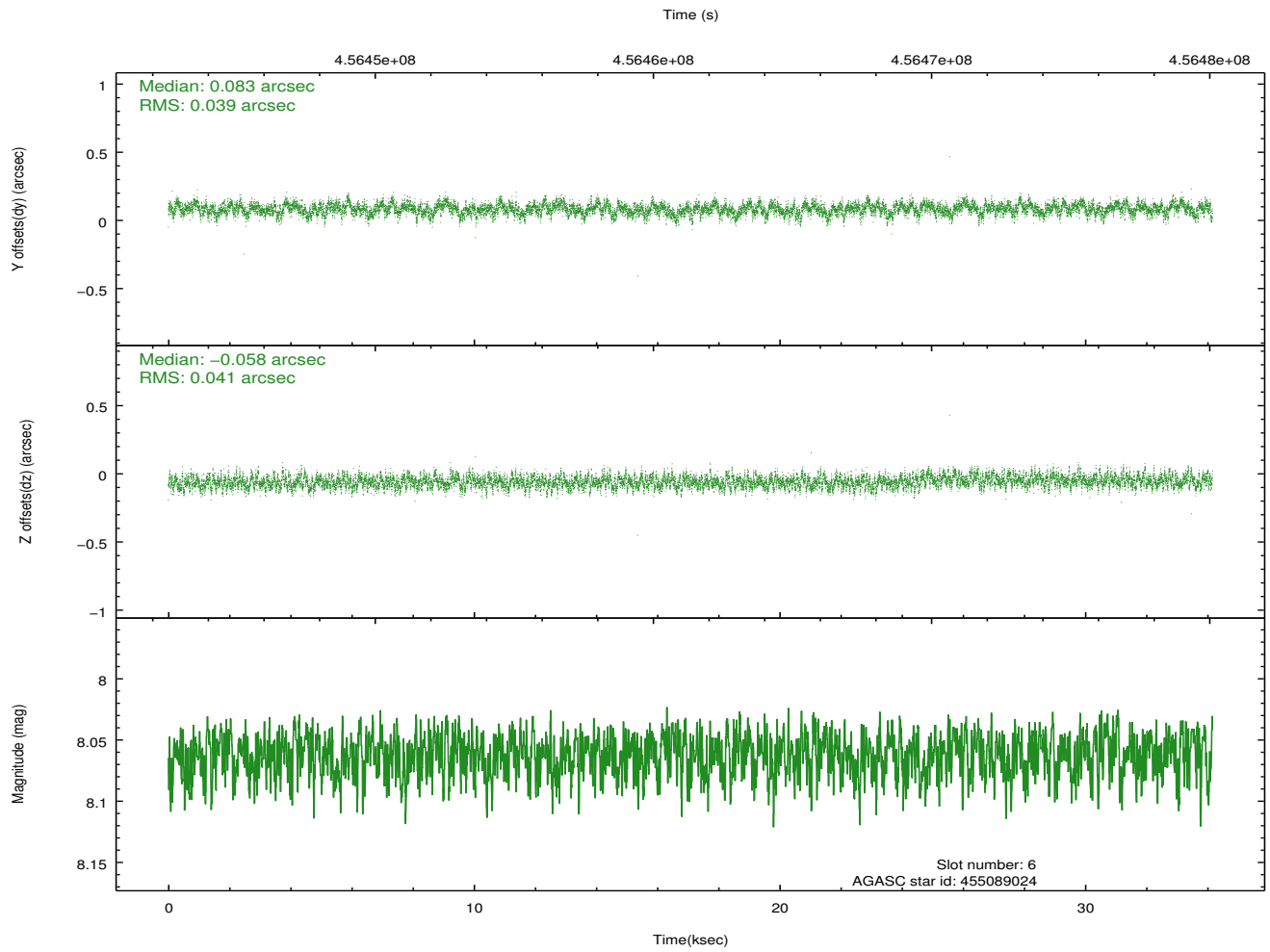
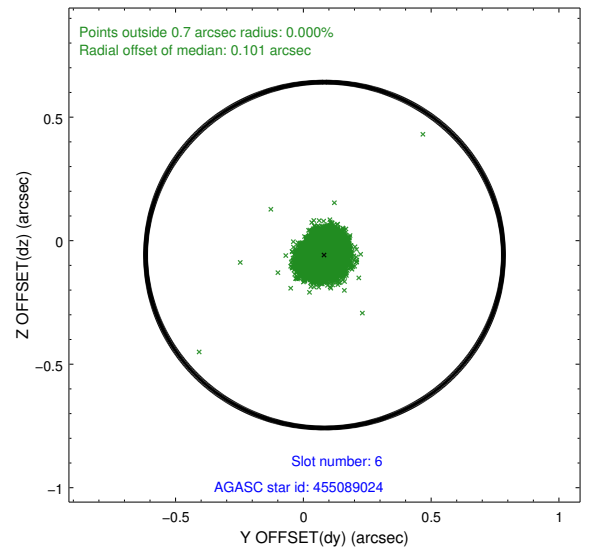
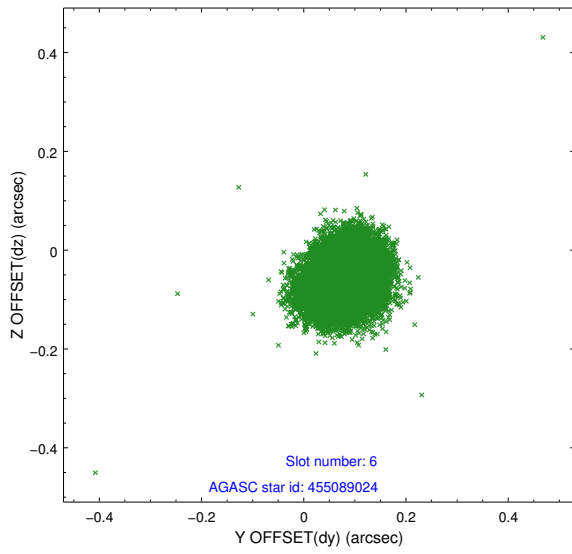
2.4.2 Slot 4



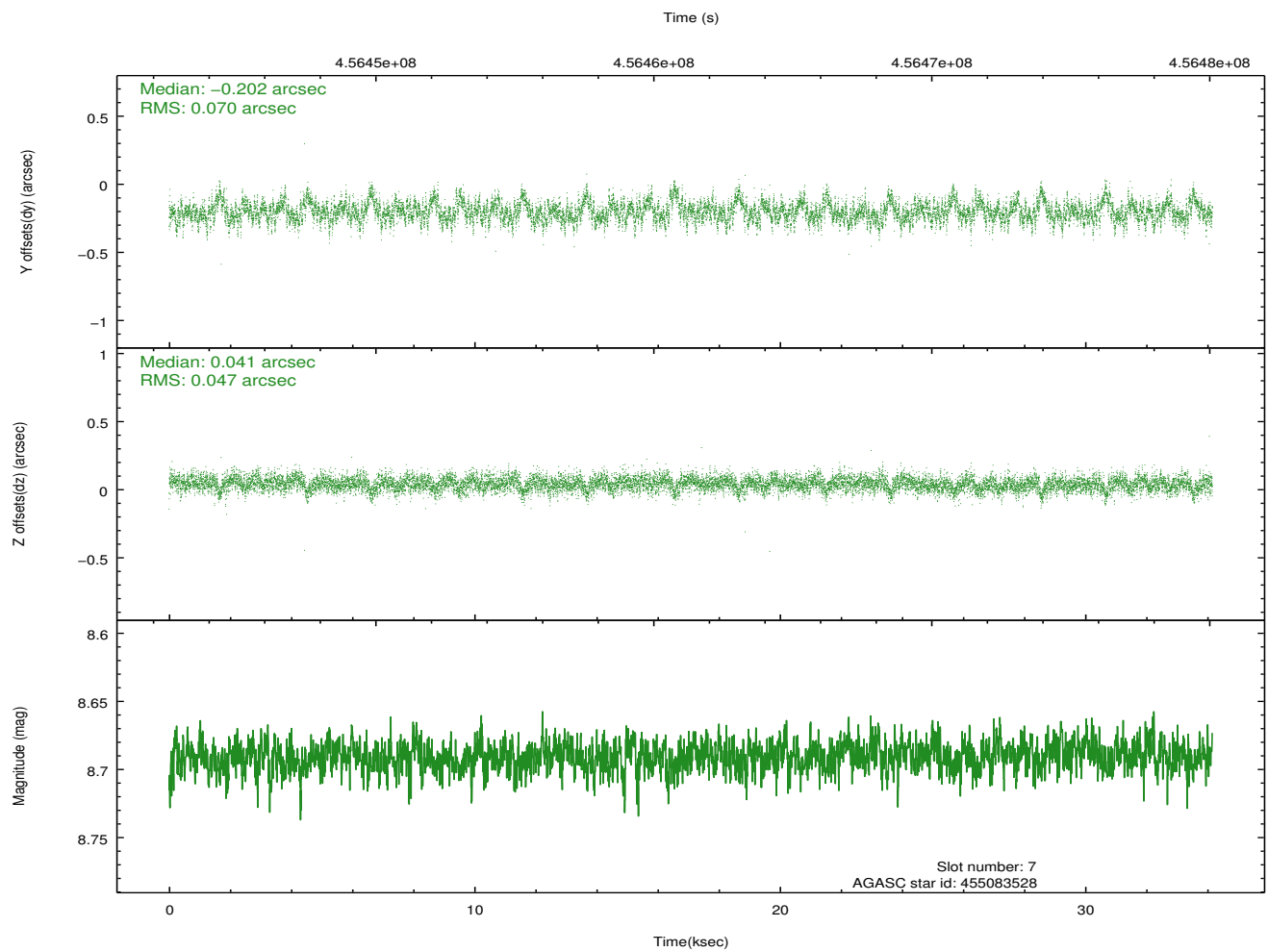
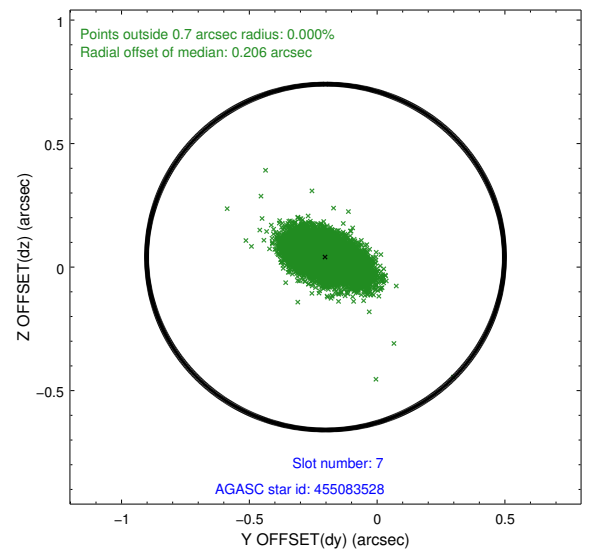
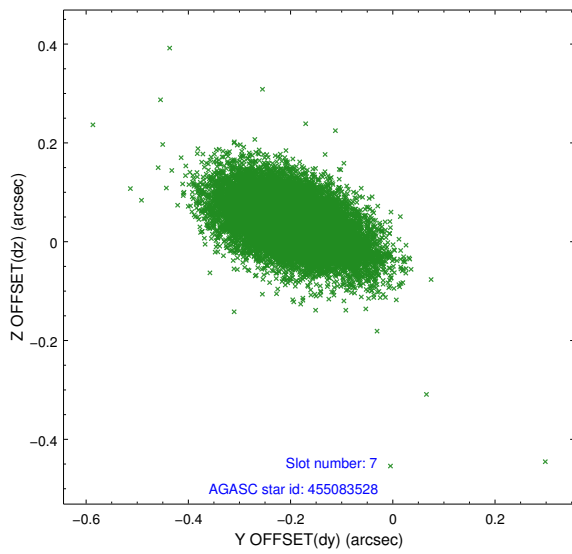
2.4.3 Slot 5



2.4.4 Slot 6

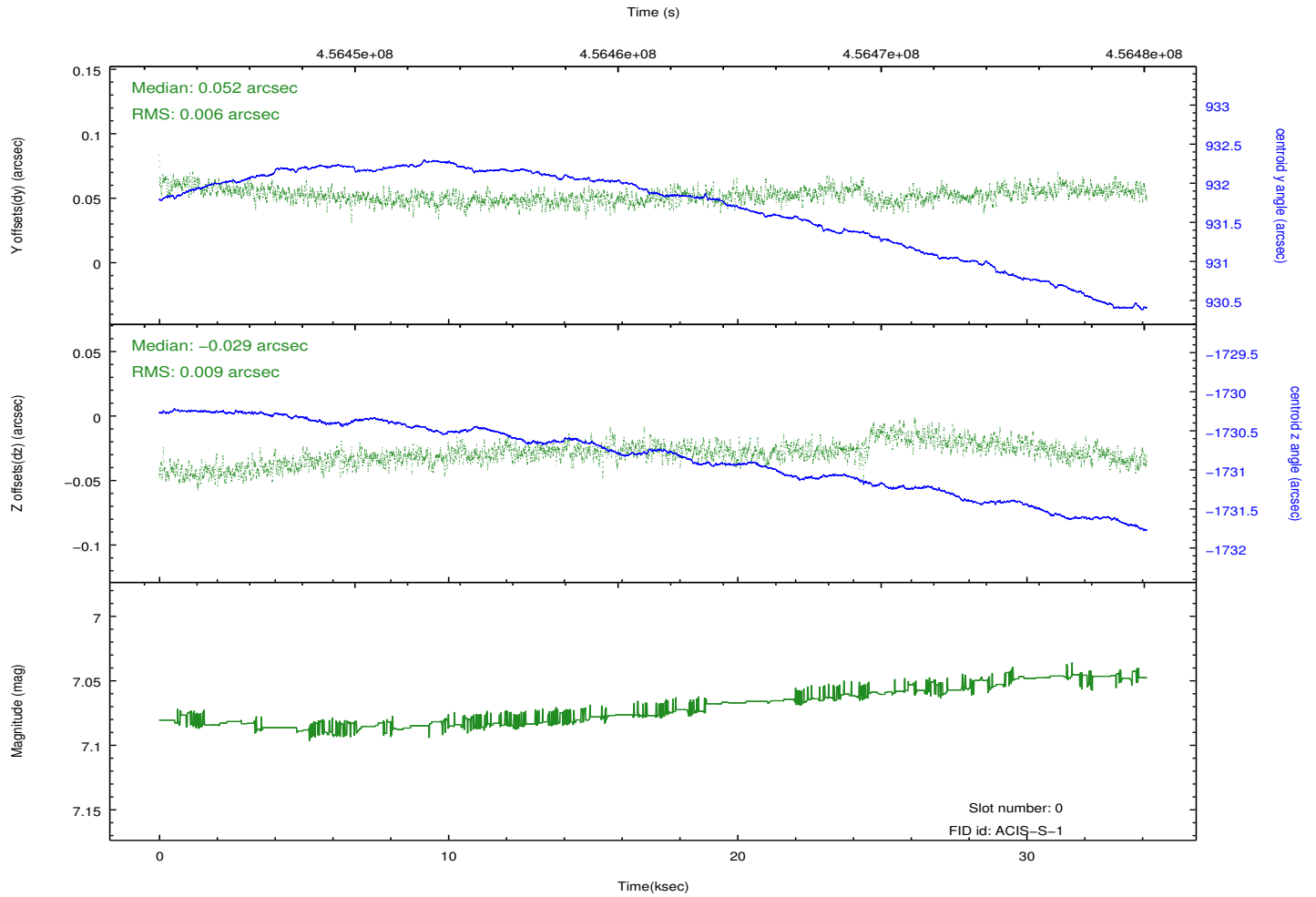
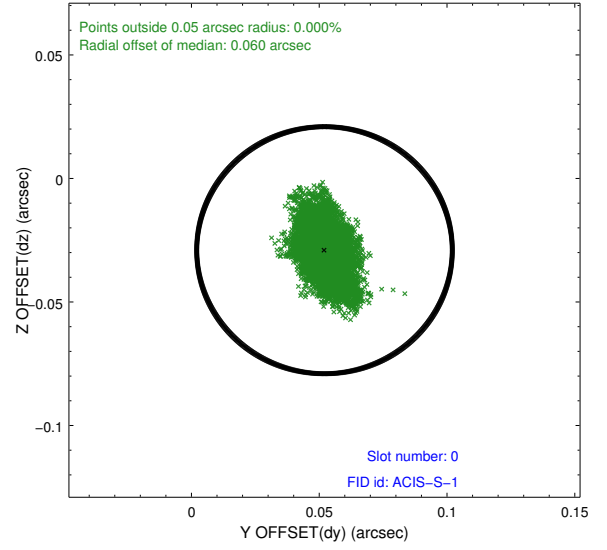
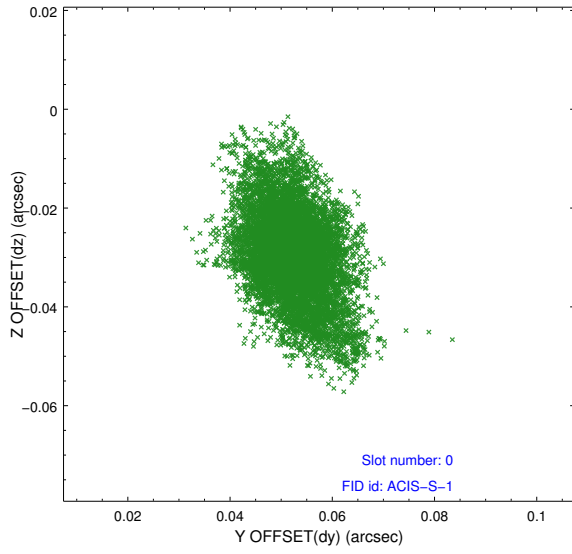


2.4.5 Slot 7

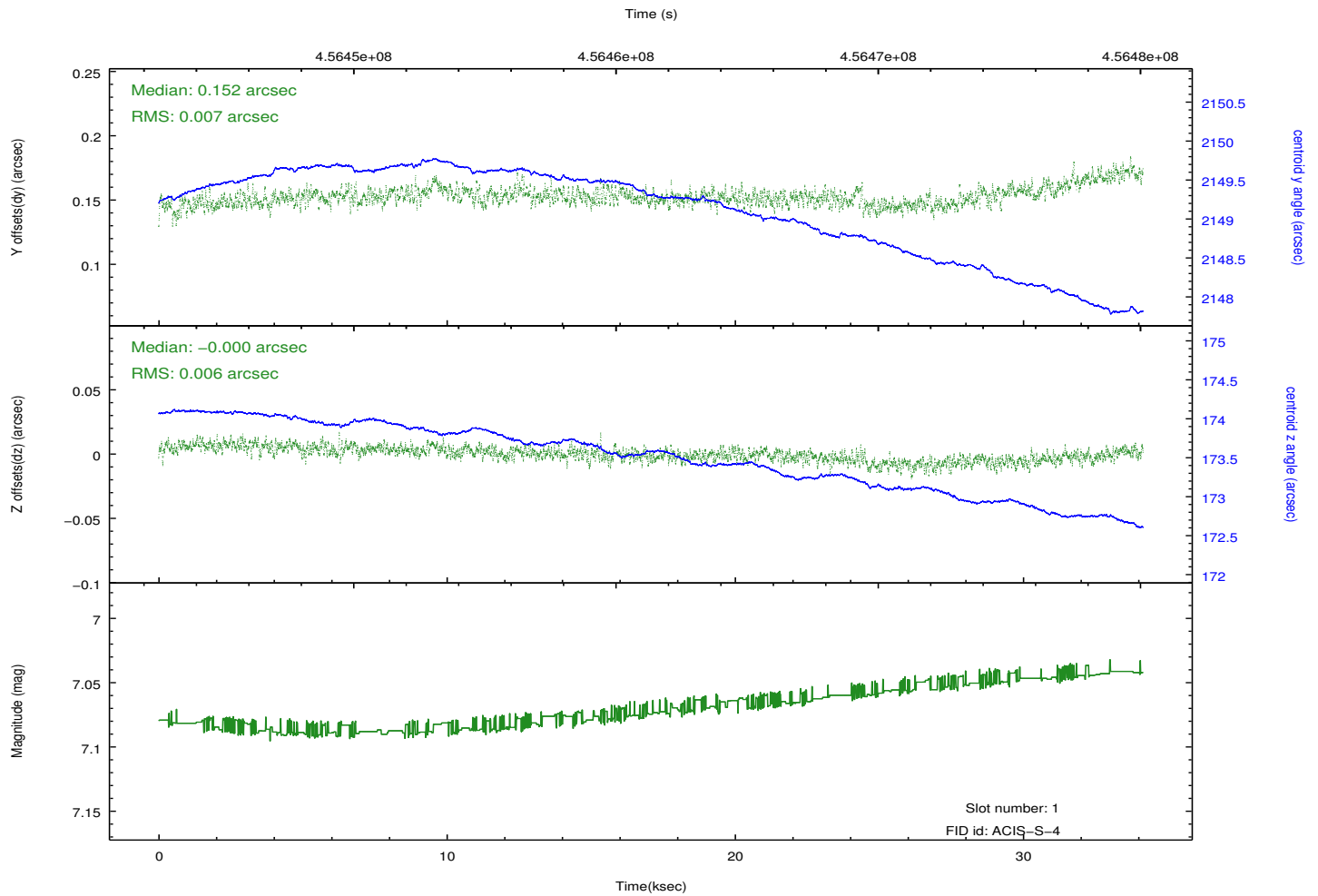
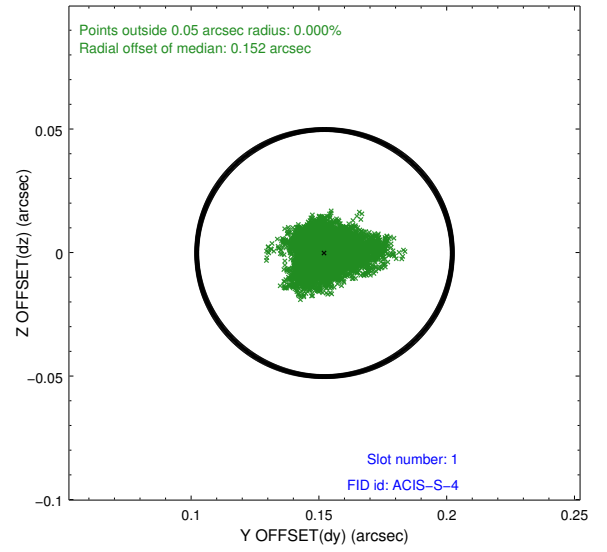
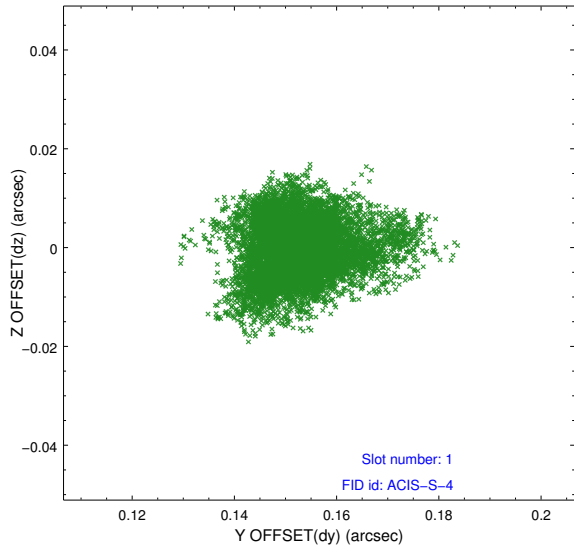


2.5 FID Slots

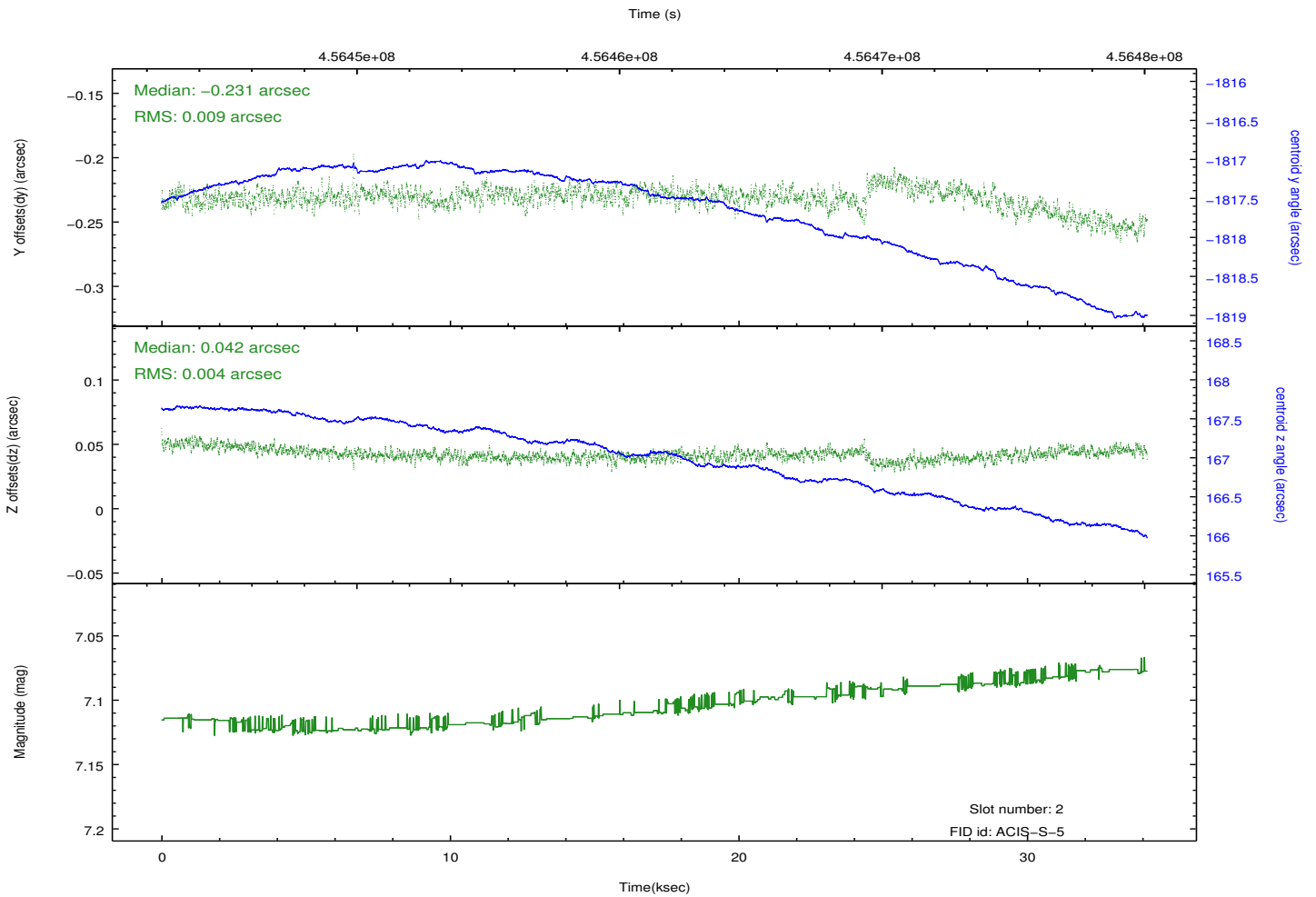
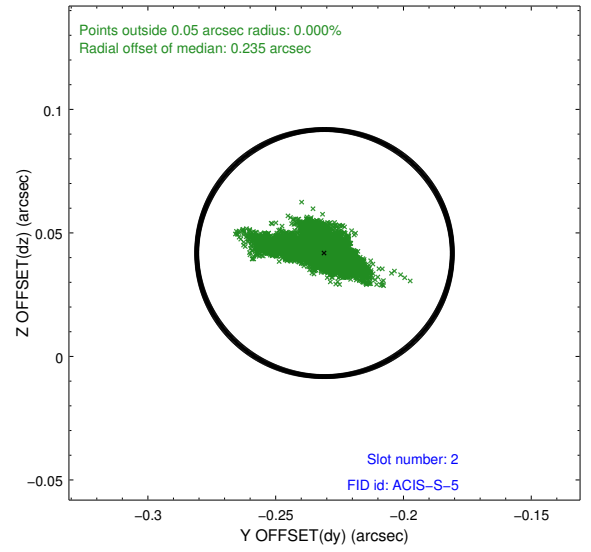
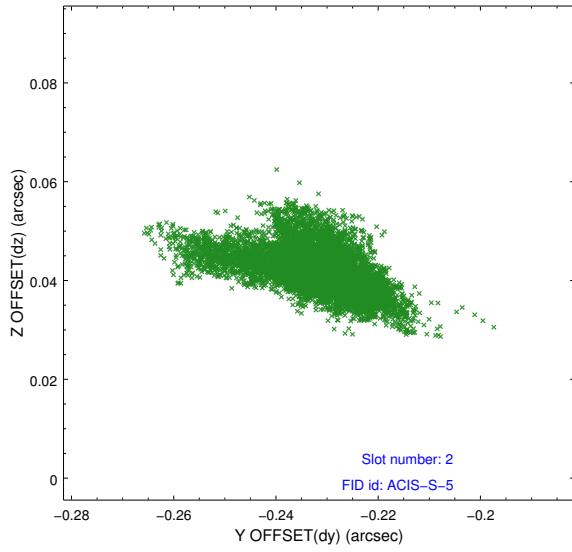
2.5.1 Slot 0



2.5.2 Slot 1



2.5.3 Slot 2



A Summary

A.1 Status

V&V Scientist	Jen Lauer
V&V Date (YYYY-MM-DD)	2012.06.20
V&V Edition	1
V&V Disposition and Status	OK
V&V Charge Time	34.069000262022

A.2 Comments