

V&V Reference Report

L2 ASCDS Version : 10.4

Observation 14916 - L2 Version 3
Chandra X-Ray Center

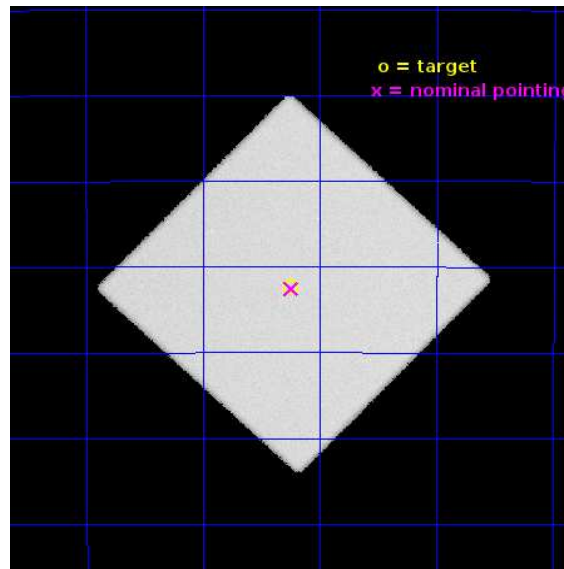
L2 Processing Date : Jun 8 2015

Contents

1	Front	2
2	OBI	3
2.1	OBI	3
2.1.1	Images	3
2.1.2	Parameters	4
2.1.3	Events	4
2.2	Compared Parameters	5
2.3	Aspect	6
2.4	Star Slots	9
2.4.1	Slot 3	9
2.4.2	Slot 4	10
2.4.3	Slot 5	11
2.4.4	Slot 6	12
2.4.5	Slot 7	13
2.5	FID Slots	14
2.5.1	Slot 0	14
2.5.2	Slot 1	15
2.5.3	Slot 2	16
A	Summary	17
A.1	Status	17
A.2	Comments	17

1 Front

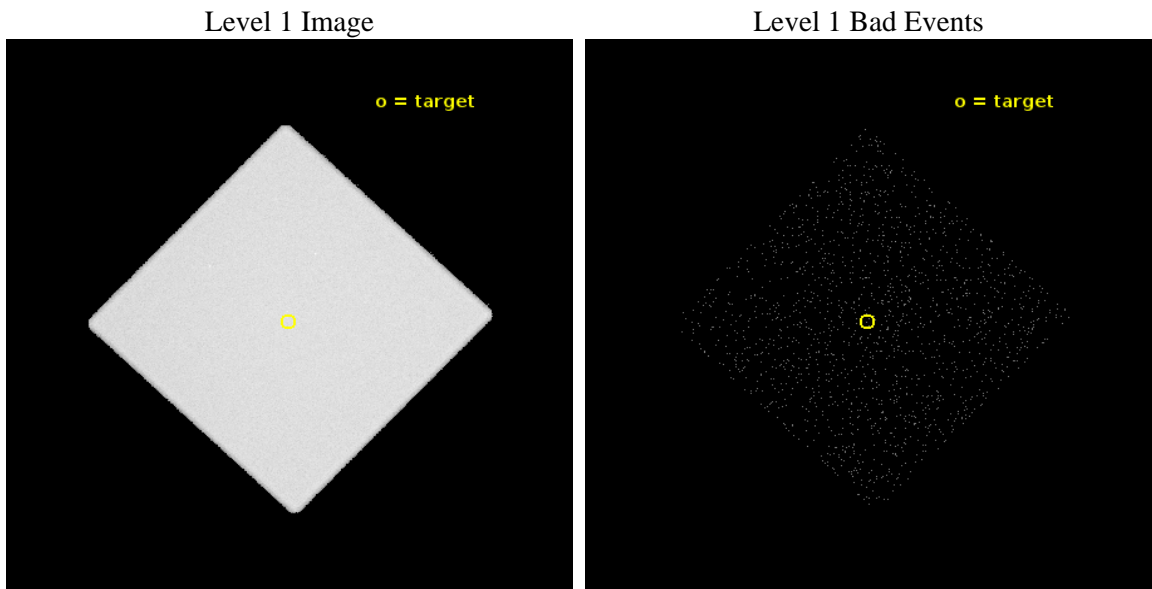
seq_num	601046	Sequence number
obs_id	14916	Observation id
title	Seeing through Baade's Window: Discovering X-Ray Sources that have Long-Term Optical Light Curves	Proposal title
observer	Dr. Rosanne Di Stefano	Principal investigator
object	Baade's Window HRC-1	Source name
ra_targ	269.562917	Observer's specified target RA [deg]
dec_targ	-29.038639	Observer's specified target Dec [deg]
ra_nom	269.56099729977	Nominal RA [deg]
dec_nom	-29.042542368084	Nominal Dec [deg]
roll_nom	268.67326778003	Nominal Roll [deg]
revision	3	Processing version of data
ontime	29348.057853162	[s]
livetime	29119.433721655	Ontime multiplied by DTCOR
l2events	1800944	Number of level 2 events



2 OBI

2.1 OBI

2.1.1 Images



2.1.2 Parameters

obi_num	1	Obi number	sched_exp_time	29250.000000	[s] Scheduled observation exposure time
ascdsver	10.4	Processing system revision	ontime	29348.057853162	[s]
caldbver	4.6.7	 	l1events	2440536	Number of level 1 events
date	2015-06-08T20:12:53	Date and time of file creation			
revision	3	Processing version of data			

2.1.3 Events

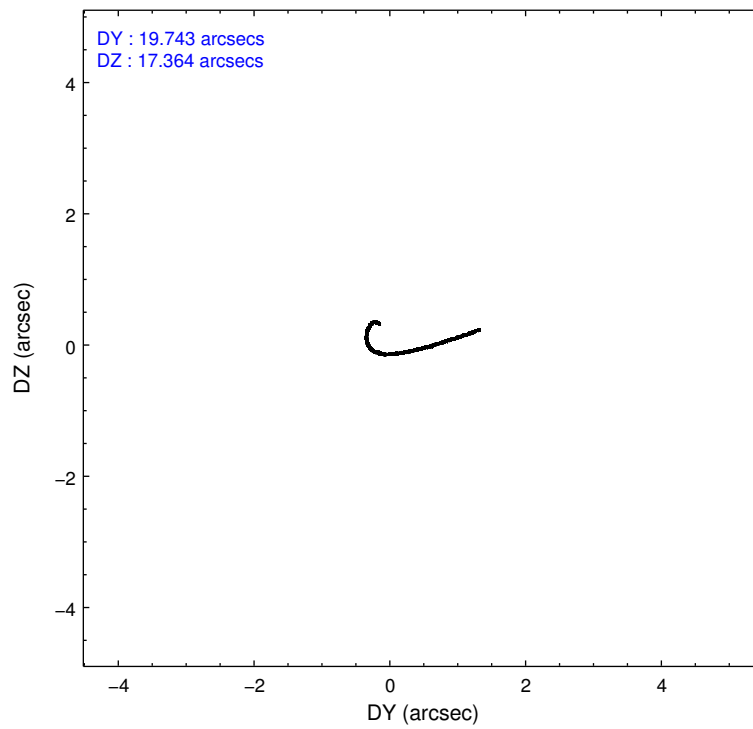
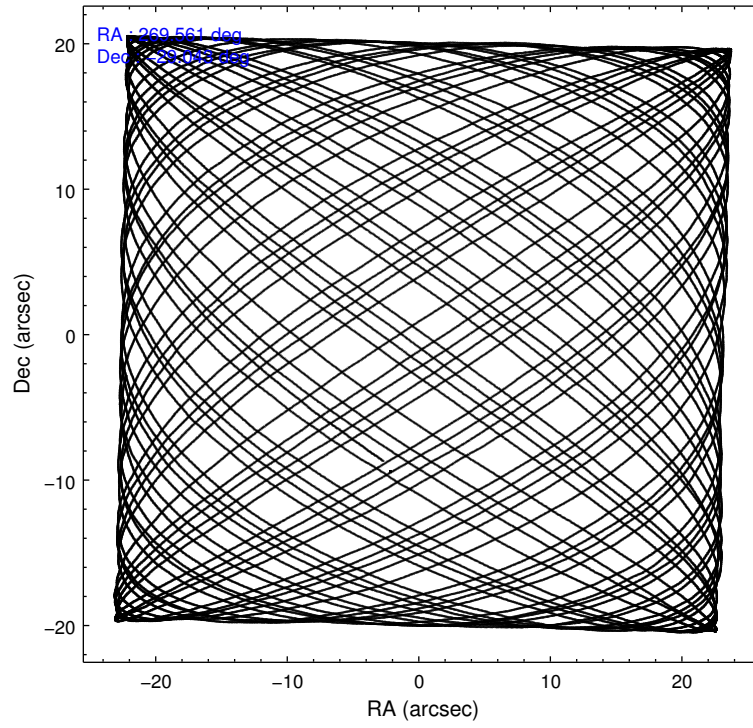
Level 1 Events

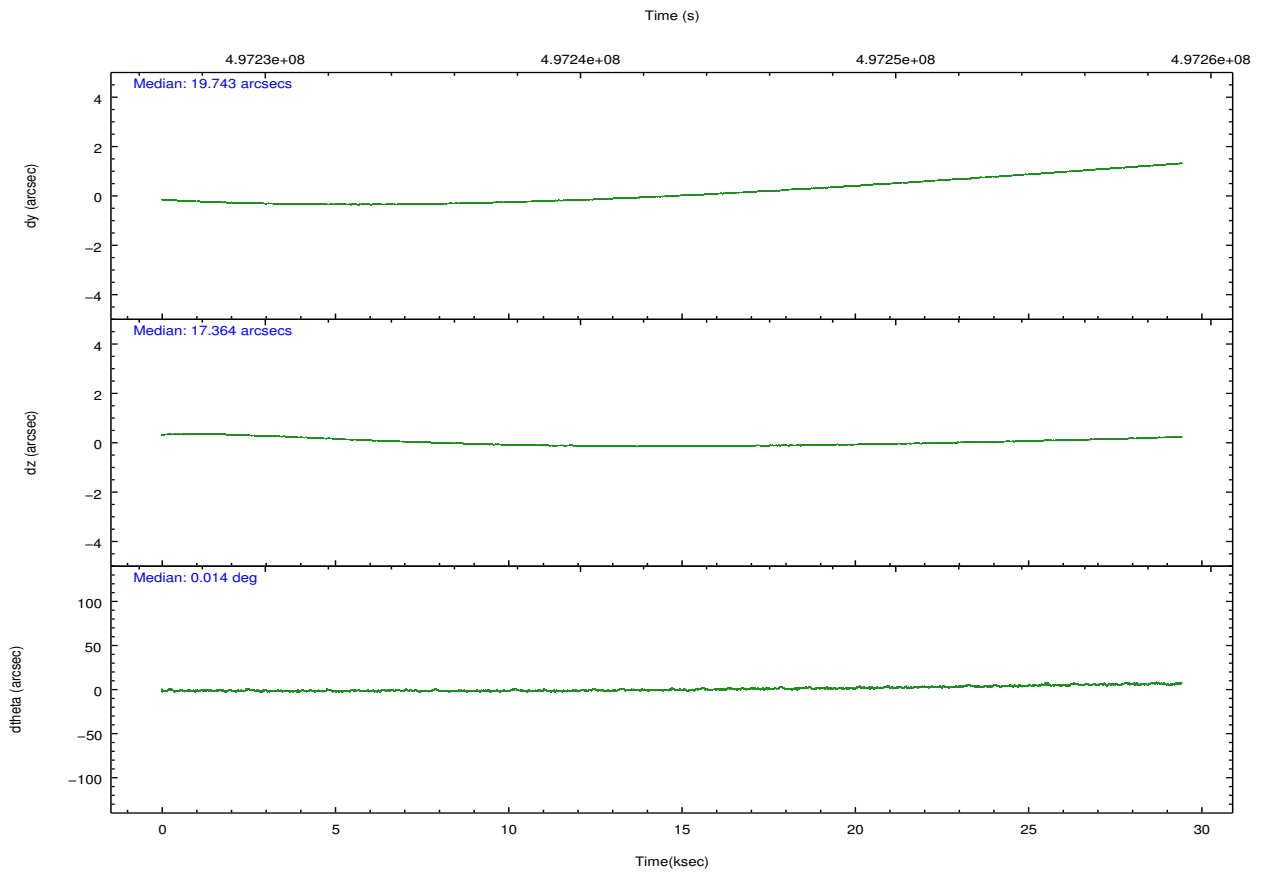
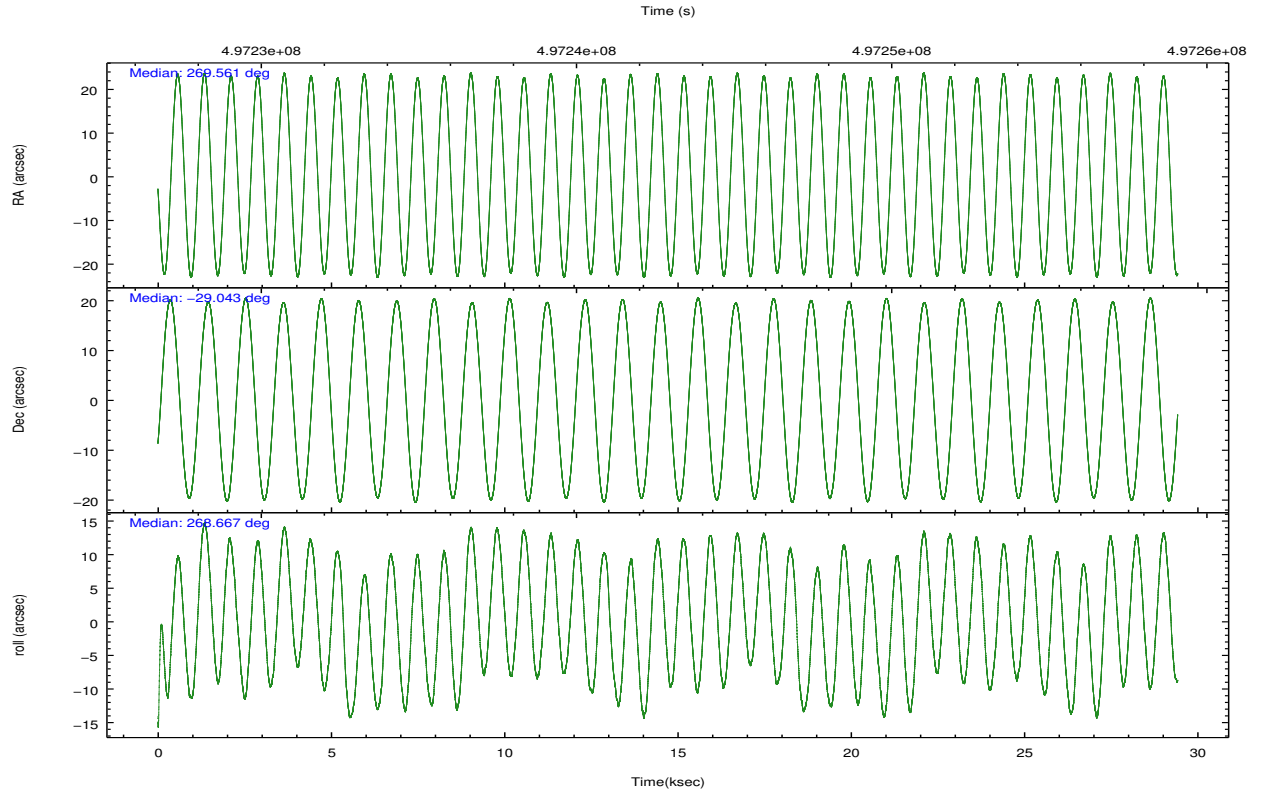
	segment 0
level 1 events	2440536
rejected events	13906
rejected %	0%

2.2 Compared Parameters

Parameter	Planned	Actual	Parameter	Planned	Actual
Instrument	HRC	HRC	Obspar format version number	7	7
Detector	HRC-I	HRC-I	Obspar file type	PREDICTED	ACTUAL
Grating	NONE	NONE	Obspar update status	NONE	UPDATED
Data mode	OBSERVING	OBSERVING			
Observation mode	POINTING	POINTING			
[deg] Pointing RA	269.545480	269.5609972997715			
[deg] Pointing Dec	-29.018968	-29.04254236808376			
[deg] Pointing Roll	268.761230	268.673267780031			
[mm] SIM focus pos	-1.040293	-1.038866356238299			
[mm] SIM defocus	0	0.001426264420575141			
[mm] SIM translation stage pos	126.985494	126.9829799899862			
[mm] SIM translation stage offset	0	0.002508901615314585			
[s] Observation start time (MET)	497228359.184000	497227917.17238			
Observation start date	2013-10-03T22:58:12	2013-10-03T22:51:57			
[s] Observation end time (MET)	497257609.184000	497257743.64901			
Observation end date	2013-10-04T07:05:42	2013-10-04T07:09:03			

2.3 Aspect





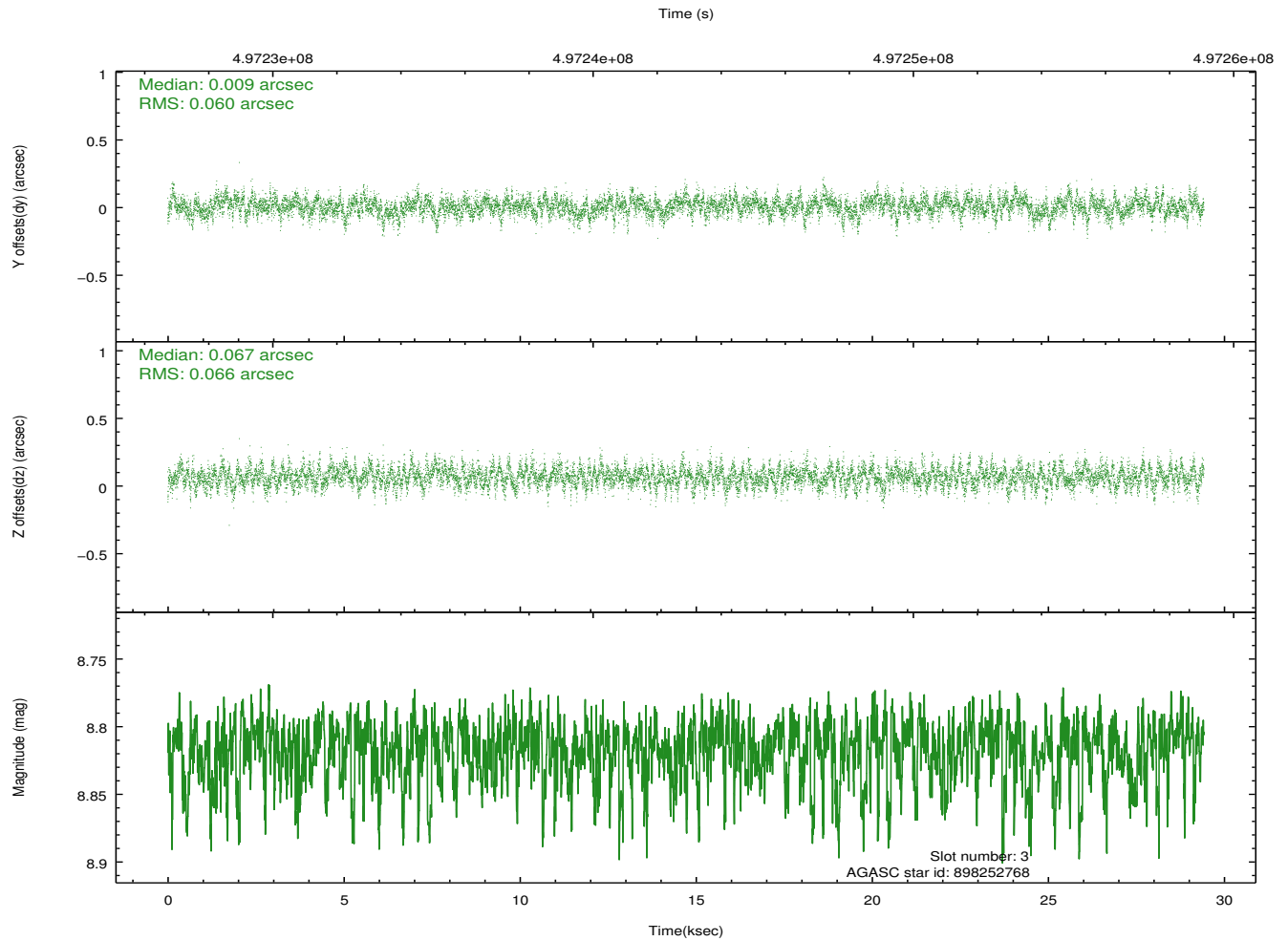
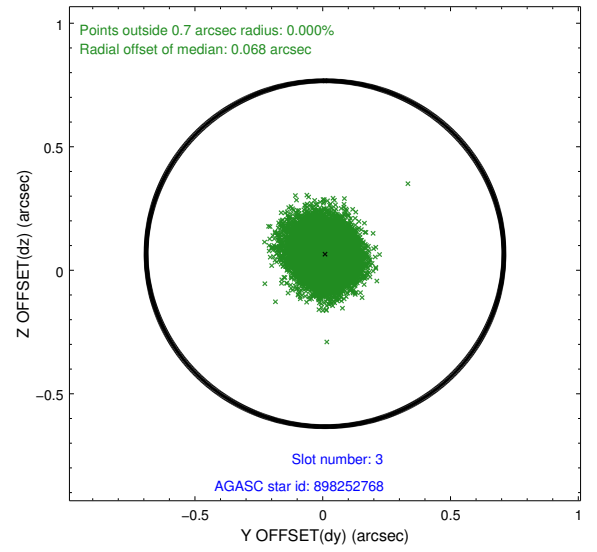
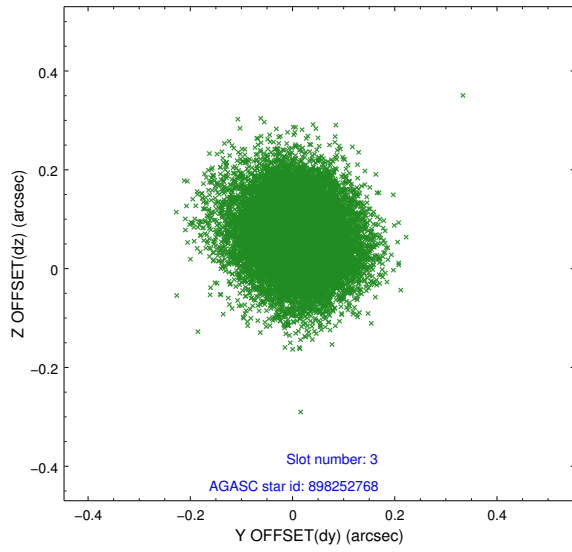
Slot Statistics

slot	status	used	id	mag	n_pts	med_dy	med_dz	dr1	dr2	ra	dec	mean_y	mean_z
0	FID		HRC-I-1	6.97	7178	-0.130	-0.036	0.016	0.034	0.000000	0.000000	-776.14	-1305.51
1	FID		HRC-I-2	7.00	7177	0.197	-0.076	0.019	0.030	0.000000	0.000000	836.71	-1307.46
2	FID		HRC-I-4	6.97	7177	0.049	0.025	0.019	0.036	0.000000	0.000000	1267.20	996.33
3	GUIDE	used	898252768	8.82	14300	0.009	0.067	0.094	0.154	269.910789	-28.705322	-1151.80	1129.09
4	GUIDE	used	898258992	8.00	14348	-0.147	0.322	0.080	0.128	269.435214	-28.570389	-1606.63	-382.98
5	GUIDE	used	898267256	9.38	14255	0.083	0.042	0.148	0.246	269.153744	-29.049851	140.34	-1229.82
6	GUIDE	used	898243064	8.75	14278	0.339	-0.248	0.125	0.216	268.852106	-29.678564	2428.46	-2116.53
7	GUIDE	used	898383760	8.23	14350	-0.273	-0.189	0.088	0.141	270.301358	-29.342458	1121.51	2396.68

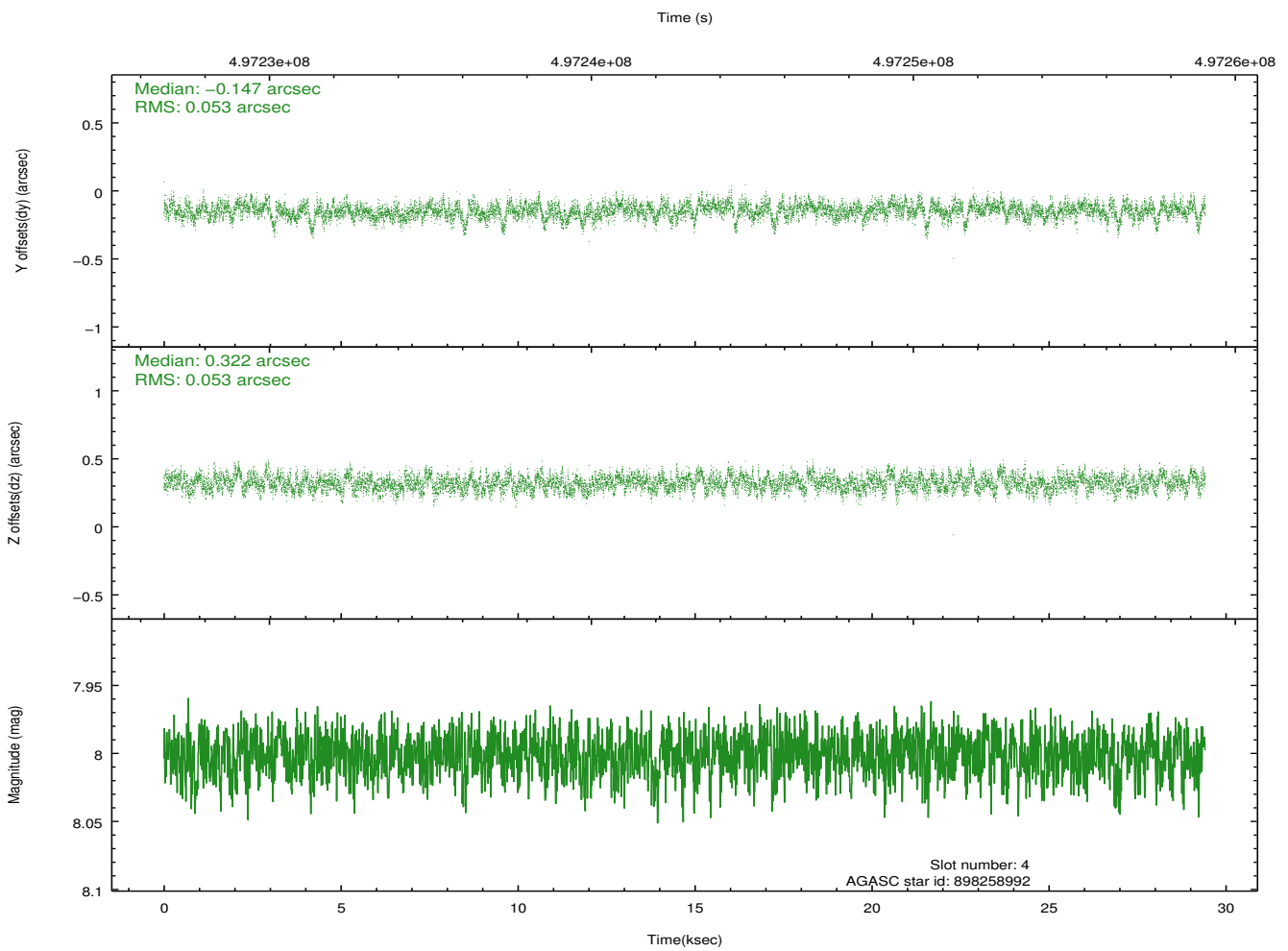
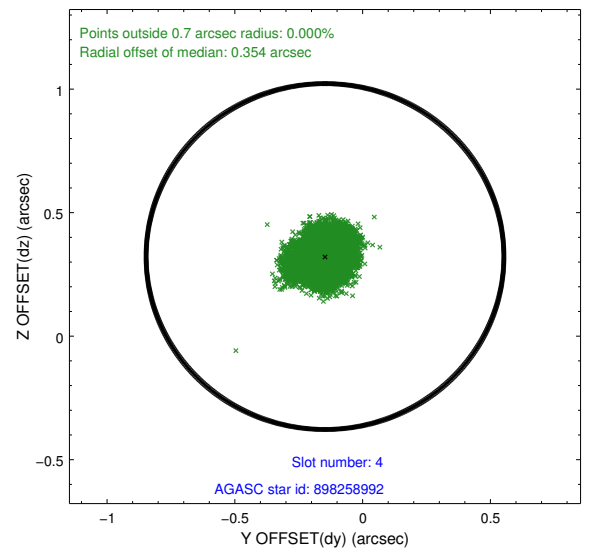
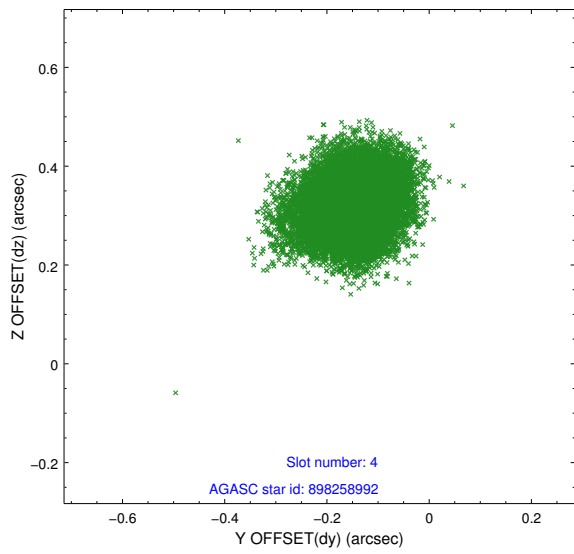
∞

2.4 Star Slots

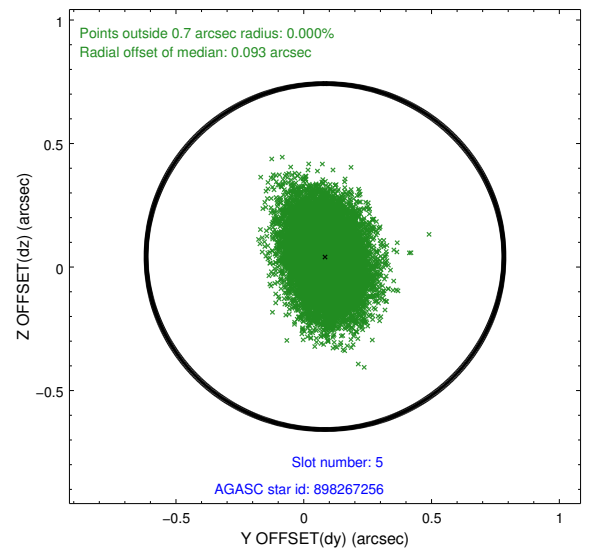
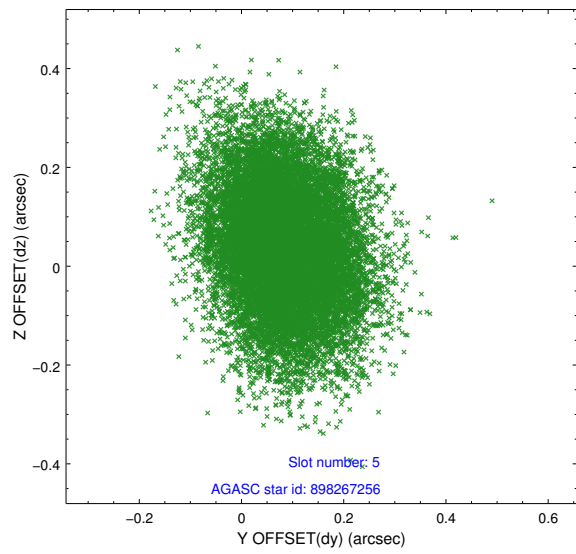
2.4.1 Slot 3



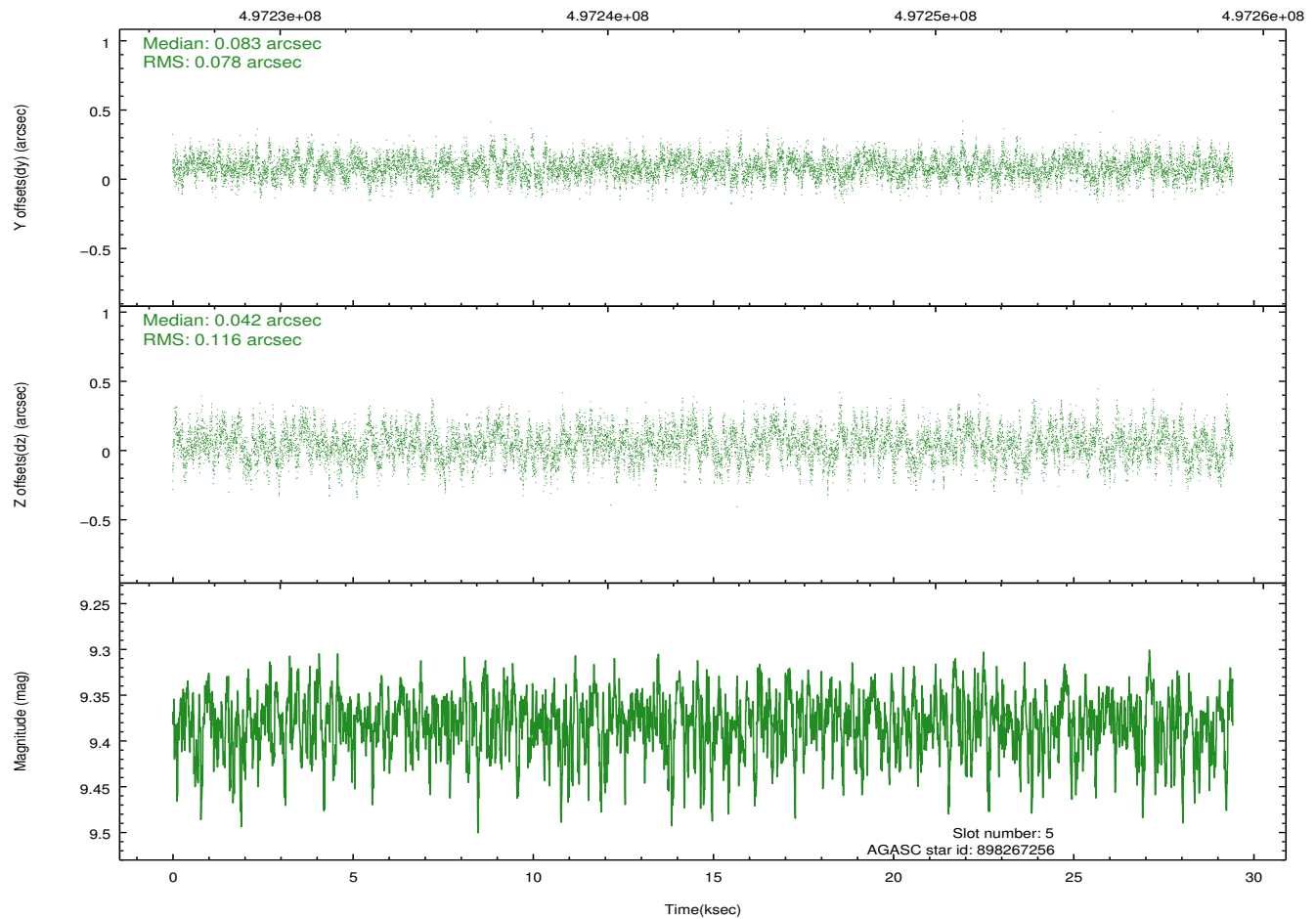
2.4.2 Slot 4



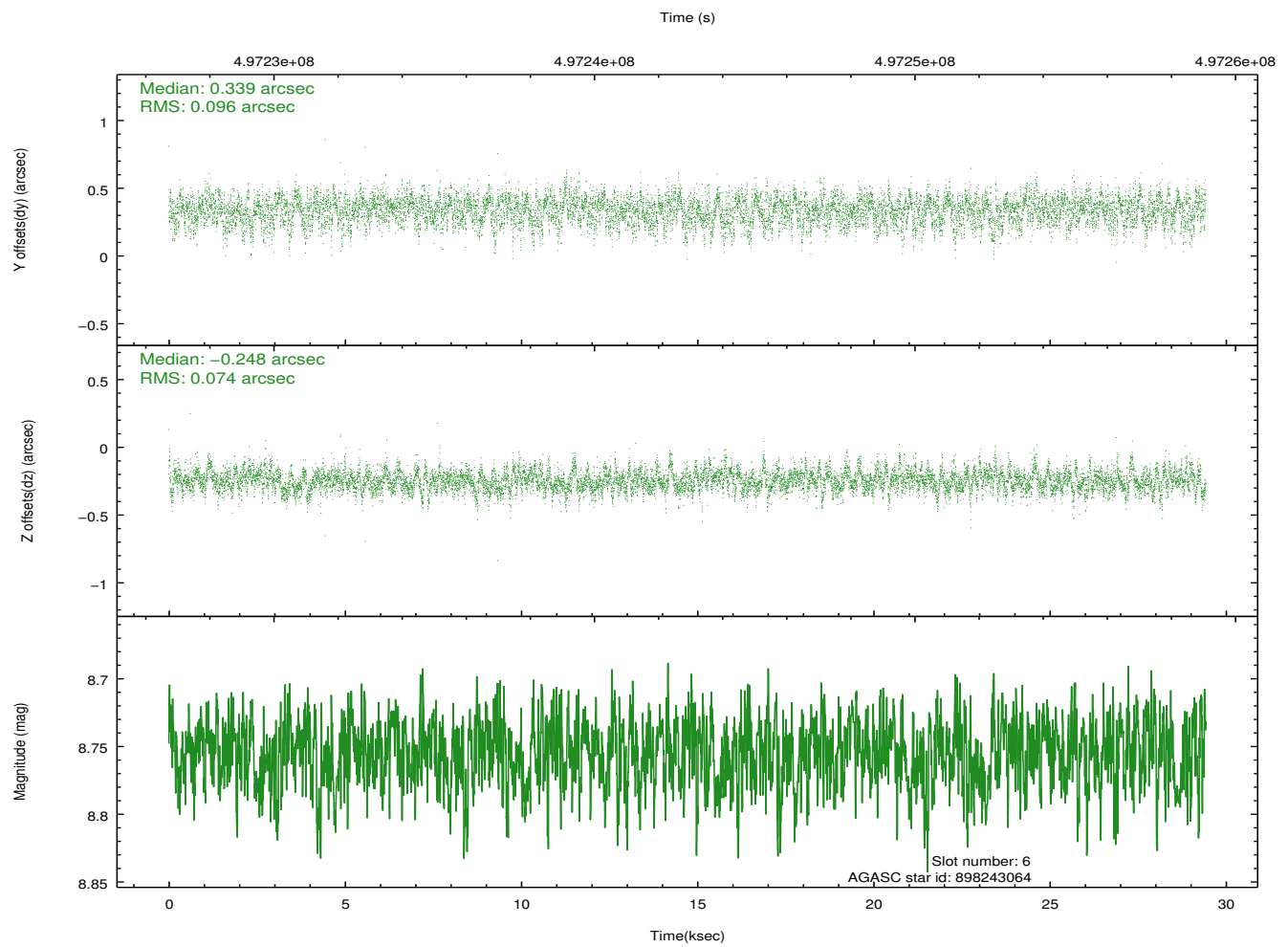
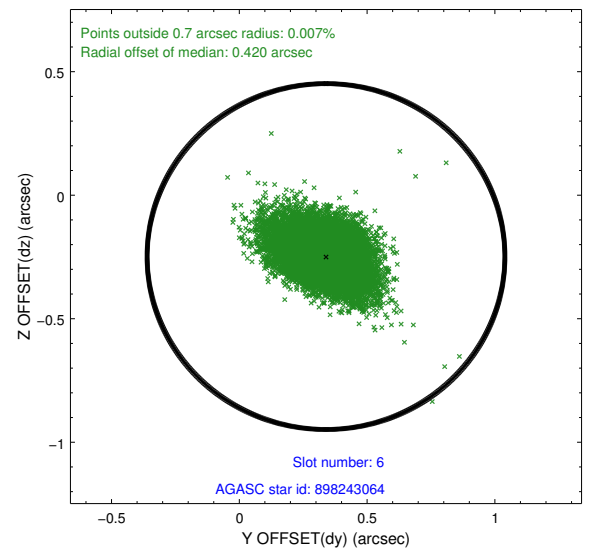
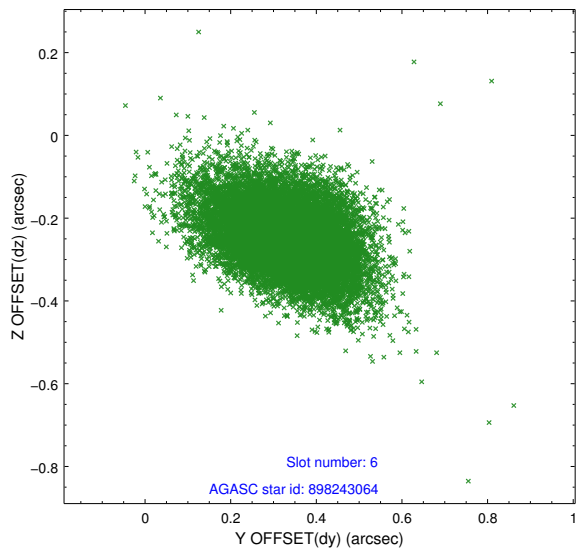
2.4.3 Slot 5



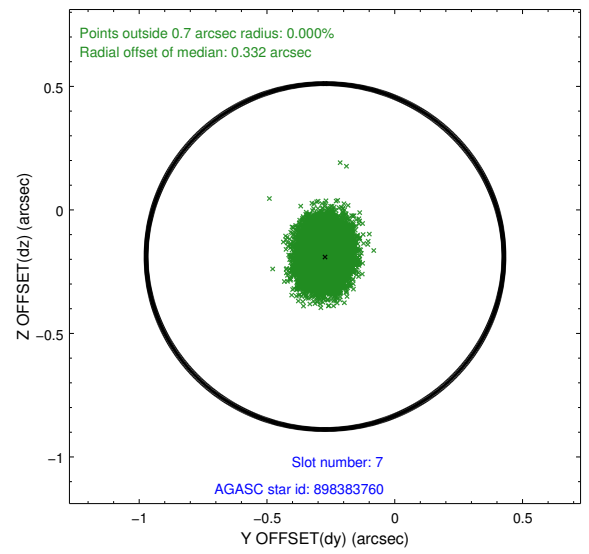
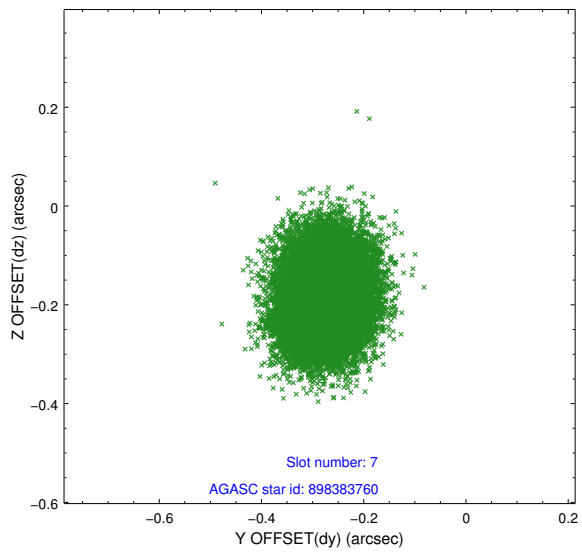
Time (s)



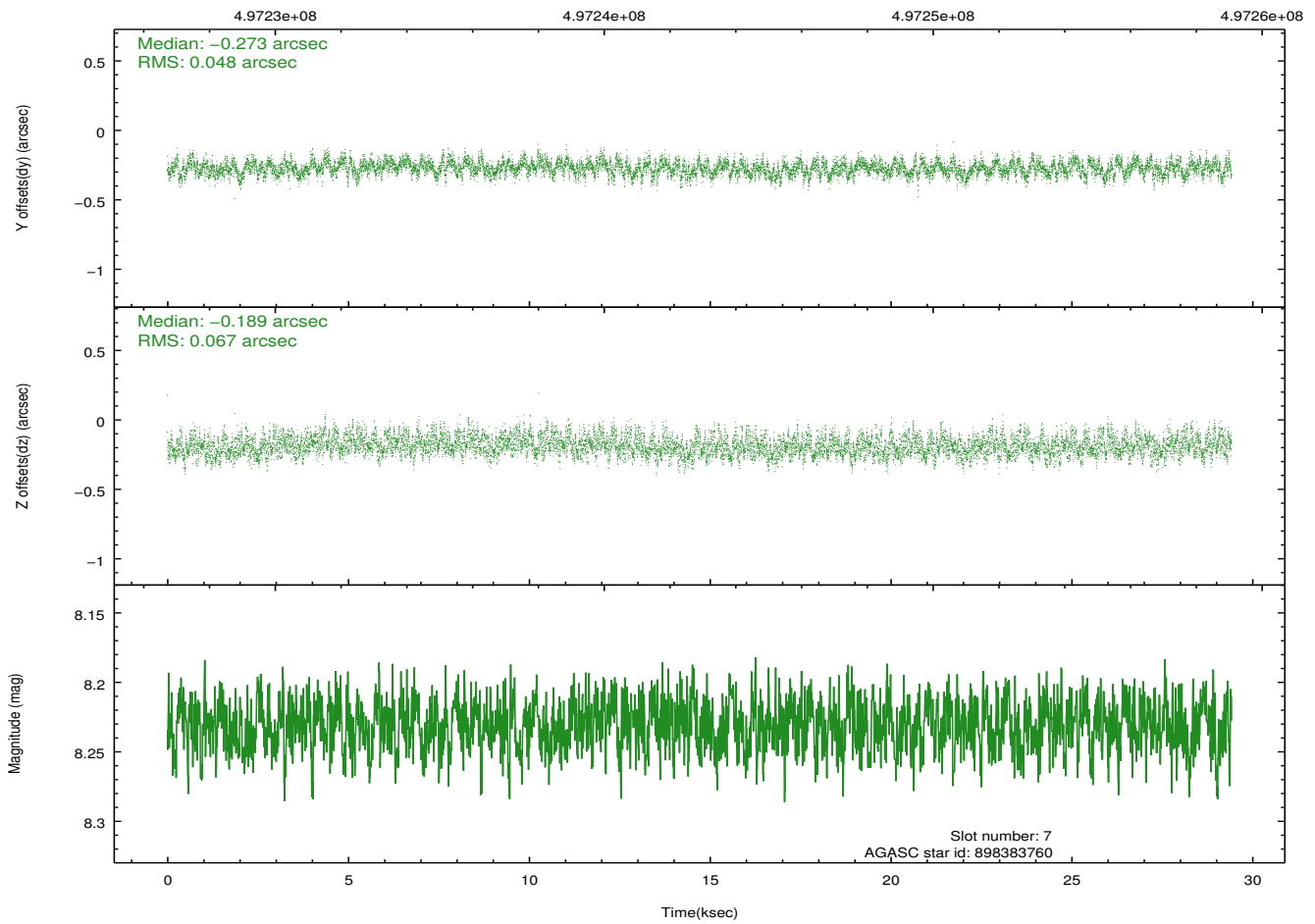
2.4.4 Slot 6



2.4.5 Slot 7

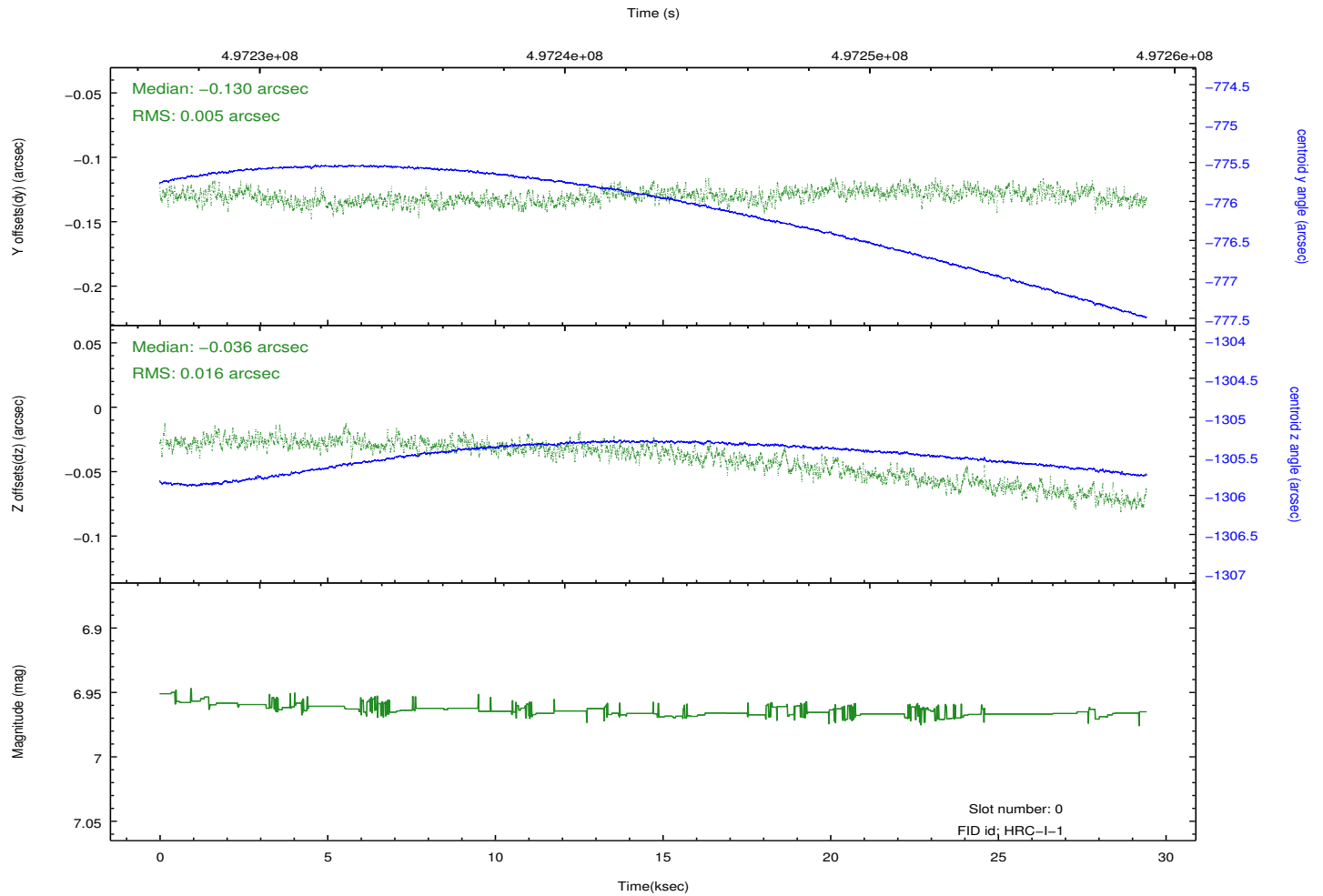
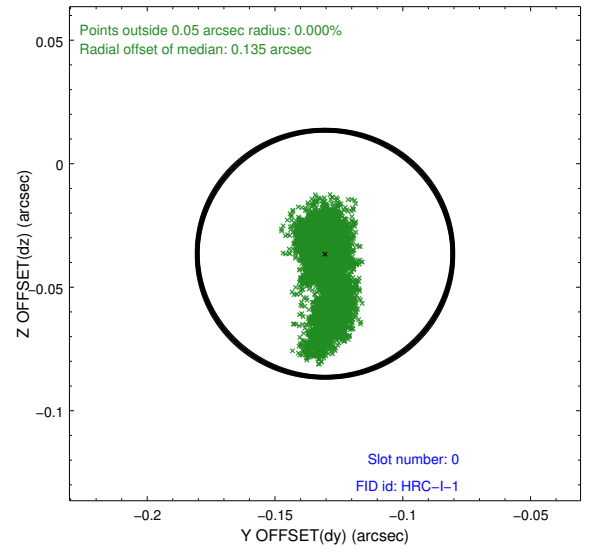
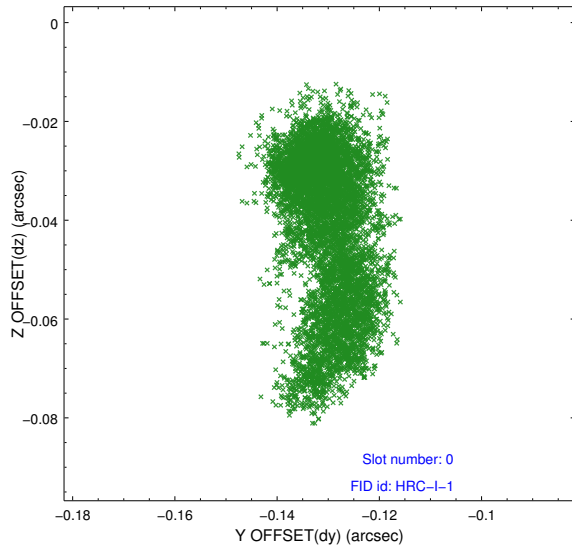


Time (s)

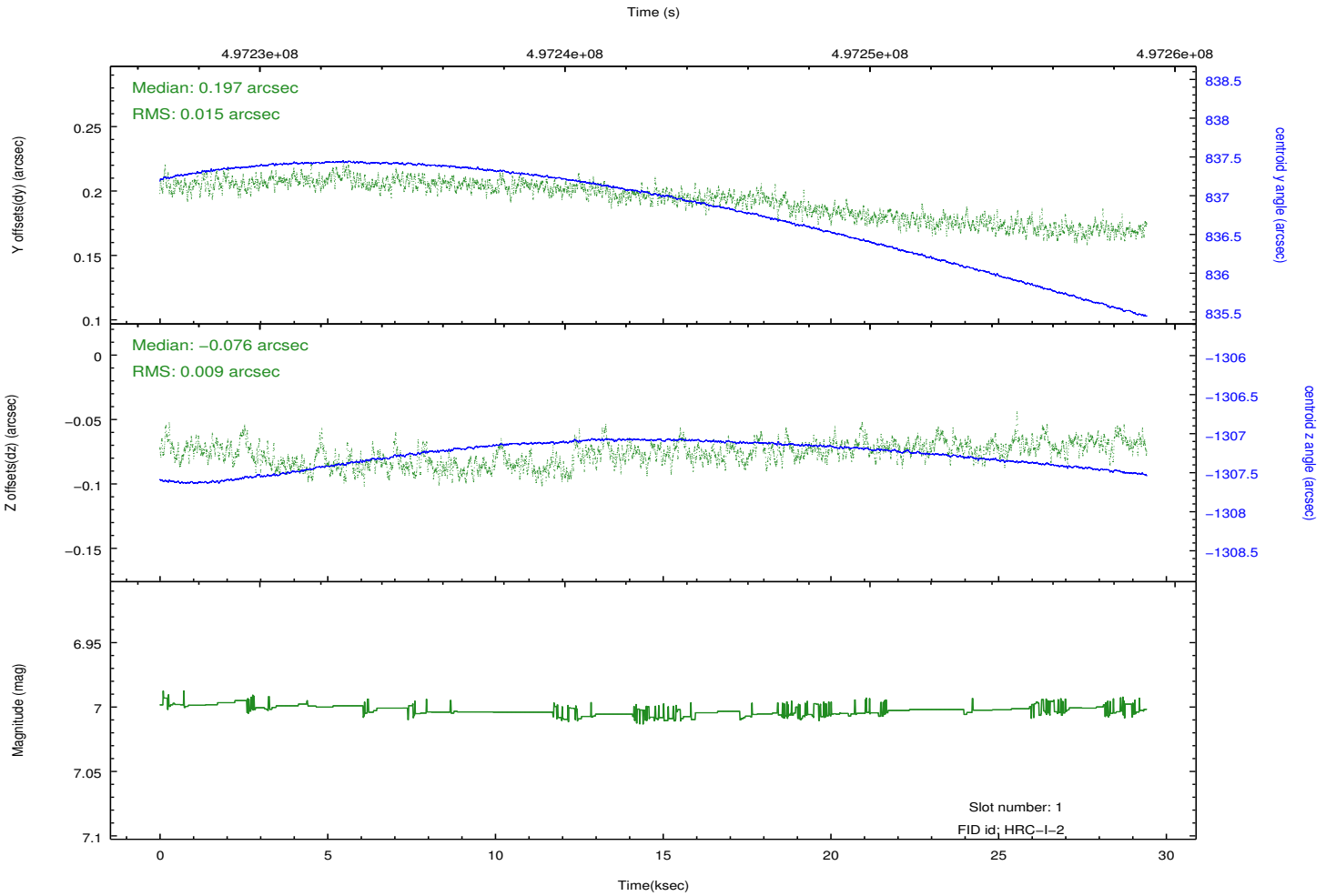
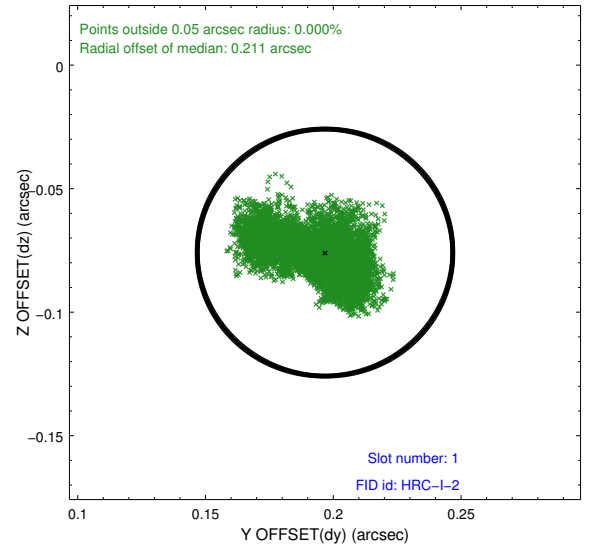
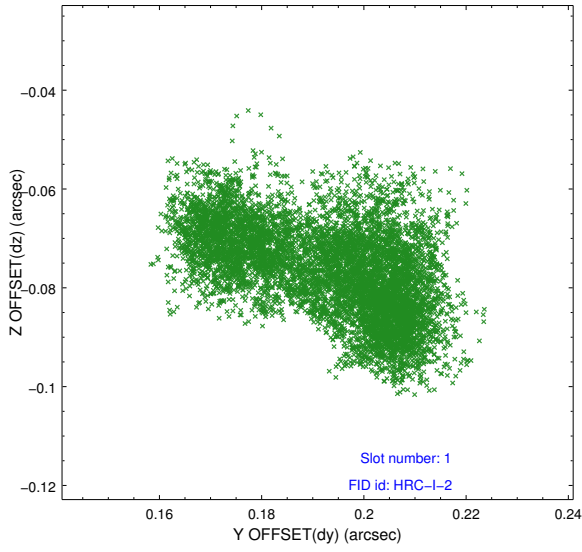


2.5 FID Slots

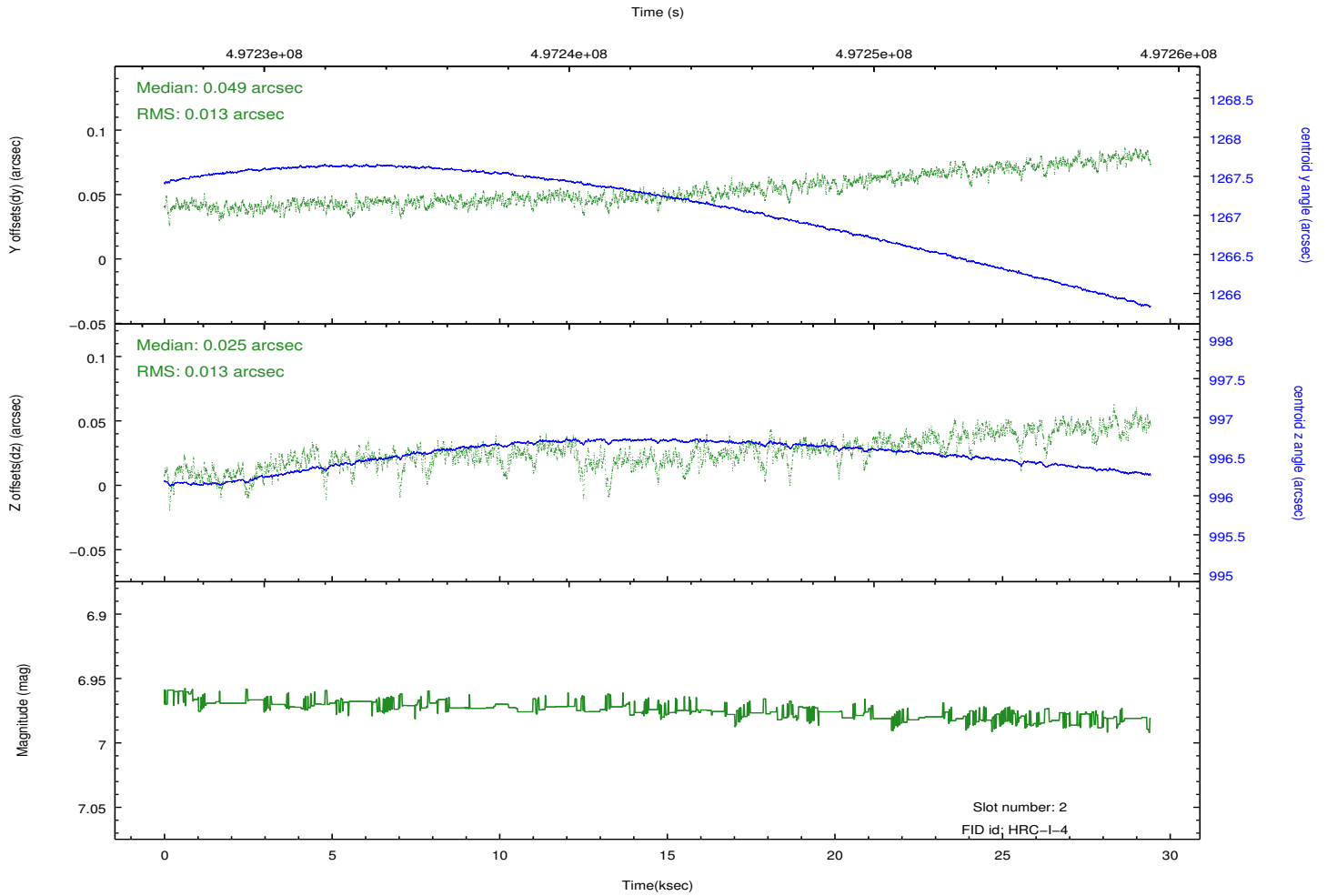
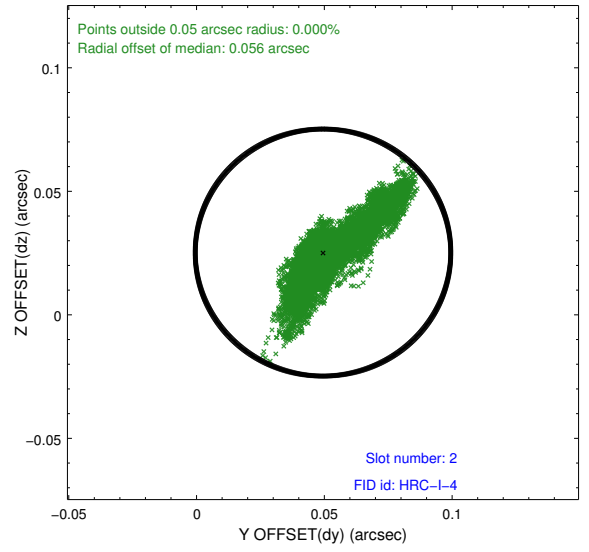
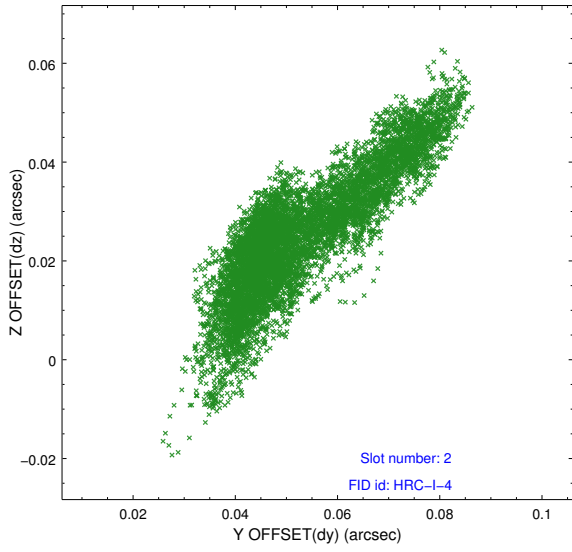
2.5.1 Slot 0



2.5.2 Slot 1



2.5.3 Slot 2



A Summary

A.1 Status

V&V Scientist	Jen Lauer
V&V Date (YYYY-MM-DD)	2015.06.18
V&V Edition	1
V&V Disposition and Status	OK
V&V Charge Time	29.348057853162

A.2 Comments

This observation was reprocessed to update the target name.