

V&V Reference Report

L2 ASCDS Version : 10

Observation 15126 - L2 Version 2
Chandra X-Ray Center

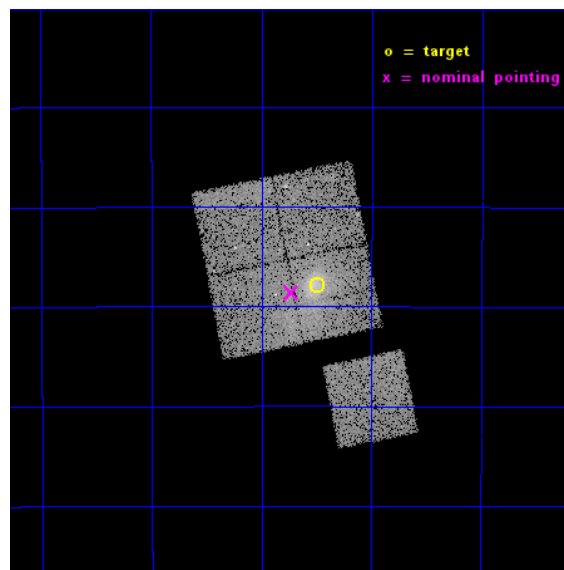
L2 Processing Date : Dec 4 2014

Contents

1	Front	2
2	OBI	3
2.1	OBI	3
2.1.1	Images	3
2.1.2	Bias	3
2.1.3	Parameters	4
2.1.4	Events	4
2.2	Compared Parameters	5
2.3	Aspect	6
2.4	Star Slots	9
2.4.1	Slot 3	9
2.4.2	Slot 4	10
2.4.3	Slot 5	11
2.4.4	Slot 6	12
2.4.5	Slot 7	13
2.5	FID Slots	14
2.5.1	Slot 0	14
2.5.2	Slot 1	15
2.5.3	Slot 2	16
A	Summary	17
A.1	Status	17
A.2	Comments	17

1 Front

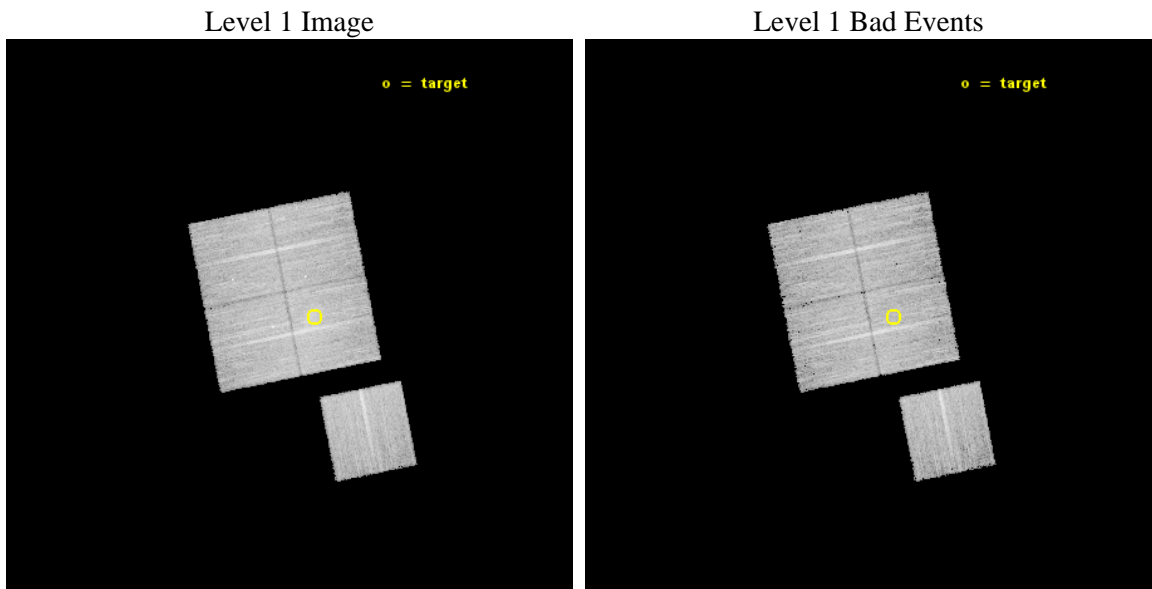
seq_num	801255	Sequence number
obs_id	15126	Observation id
title	A Chandra-Planck Legacy Program for Massive Clusters of Galaxies	P
observer	Dr. Christine Jones	Principal investigator
object	G247.17-23.32	Source name
dtycycle	0	
cycle	P	events from which exps? Prim/Second/Both
ra_targ	94.124583	Observer's specified target RA [deg]
dec_targ	-39.798333	Observer's specified target Dec [deg]
ra_nom	94.18211678917	Nominal RA [deg]
dec_nom	-39.809835028294	Nominal Dec [deg]
roll_nom	168.70516002261	Nominal Roll [deg]
revision	2	Processing version of data
ontime	17077.859141111	Sum of GTIs [s]
livetime	16854.724338896	Livetime [s]
ontime0	17081.000131369	Sum of GTIs [s]
ontime1	17081.000131369	Sum of GTIs [s]
ontime2	17077.859141111	Sum of GTIs [s]
ontime3	17077.859161019	Sum of GTIs [s]
ontime6	17077.859161019	Sum of GTIs [s]
l2events	50404	Number of level 2 events



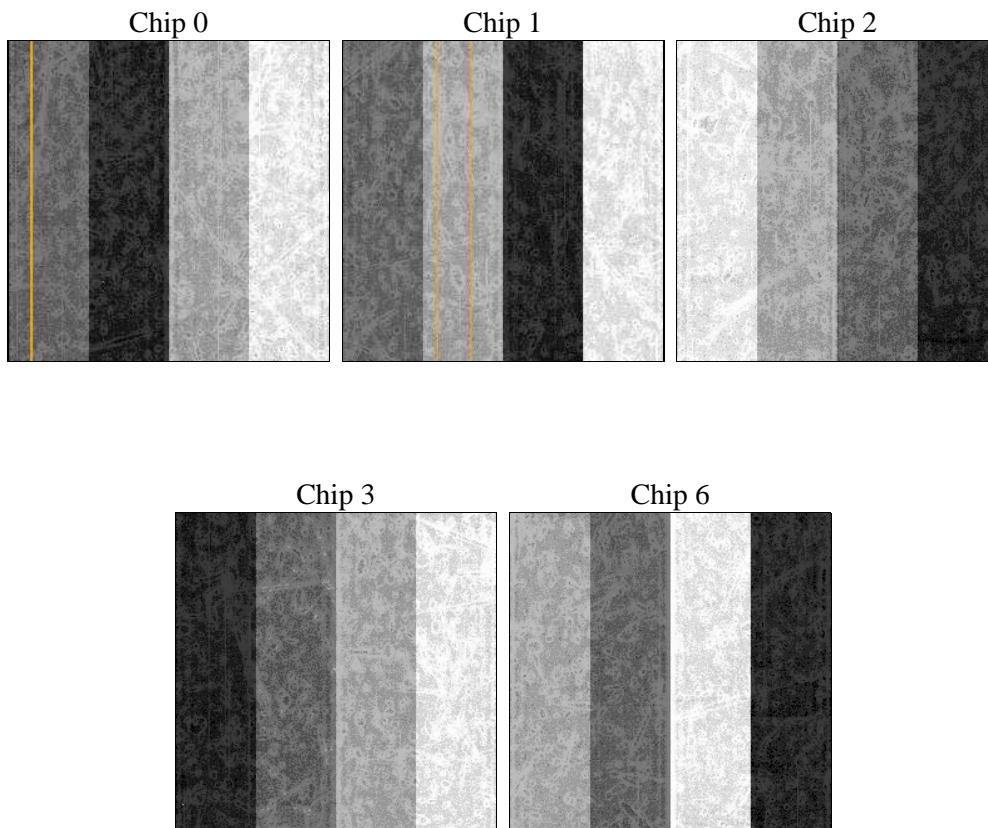
2 OBI

2.1 OBI

2.1.1 Images



2.1.2 Bias



2.1.3 Parameters

obi_num	0	Obi number	sched_exp_time	17000.000000	[s] Scheduled observation exposure time
ascdsver	10.3	Processing system revision	ontime	17077.859141111	Sum of GTIs [s]
caldbver	4.6.4	 	ontime0	17081.000131369	Sum of GTIs [s]
date	2014-12-04T10:01:21	Date and time of file creation	ontime1	17081.000131369	Sum of GTIs [s]
revision	2	Processing version of data	ontime2	17077.859141111	Sum of GTIs [s]
			ontime3	17077.859161019	Sum of GTIs [s]
			ontime6	17077.859161019	Sum of GTIs [s]
			l1events	411154	Number of level 1 events

2.1.4 Events

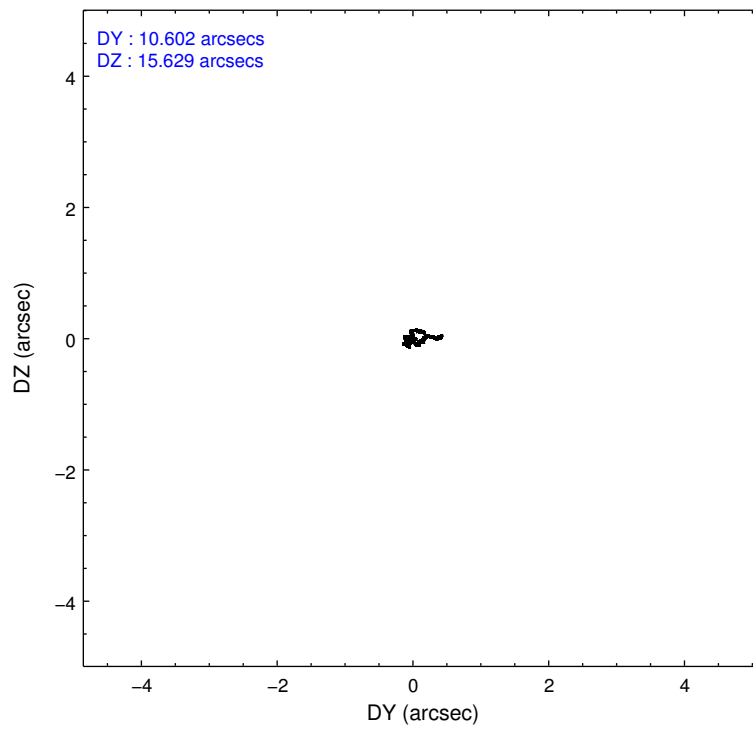
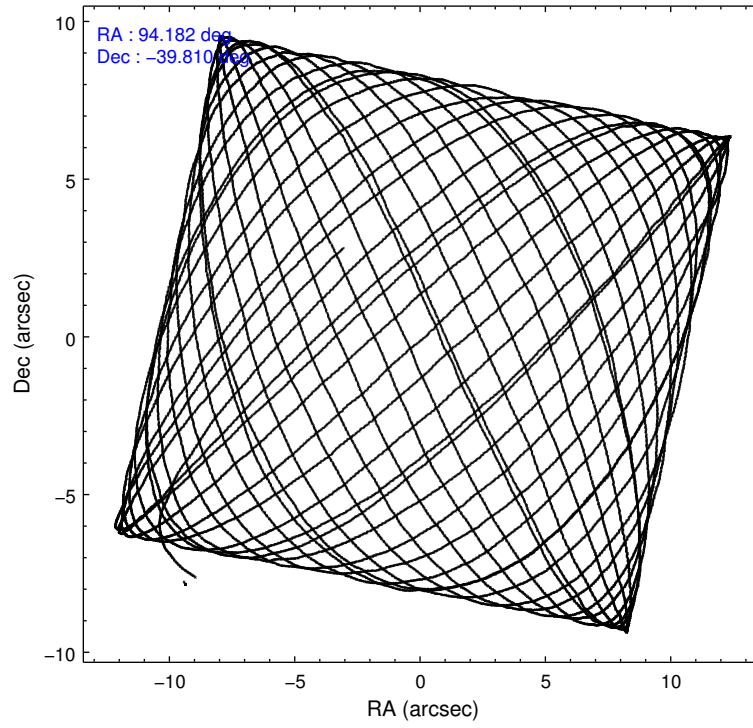
	ccd 0	ccd 1	ccd 2	ccd 3	ccd 6
level 1 events	77440	77209	92079	83850	80576
rejected events	66934	66157	75578	73046	70869
rejected %	86%	85%	82%	87%	87%

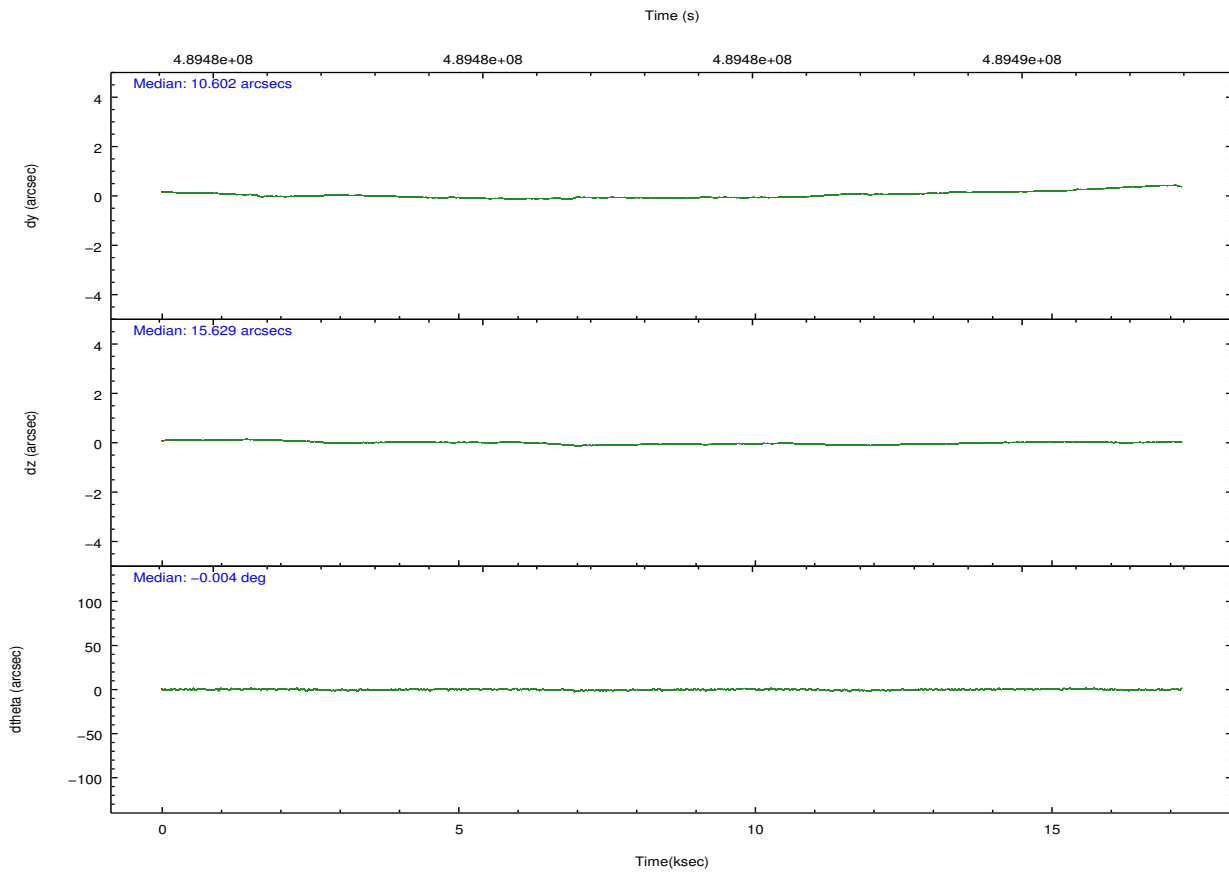
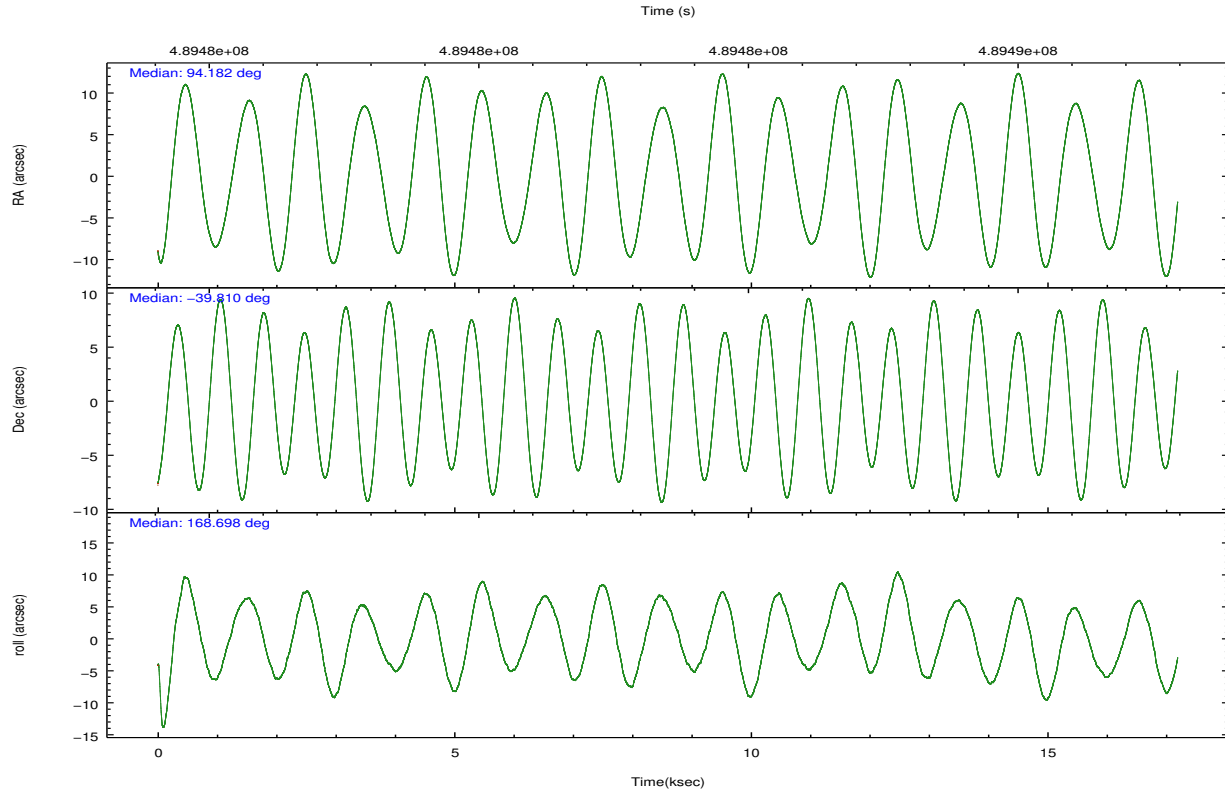
	ccd 0	ccd 1	ccd 2	ccd 3	ccd 6
grade 0 events	3907	3989	9002	4528	3288
	5%	5%	9%	5%	4%
grade 1 events	56	56	82	44	45
	0%	0%	0%	0%	0%
grade 2 events	2568	2582	2991	2270	2281
	3%	3%	3%	2%	2%
grade 3 events	1074	1062	1142	963	999
	1%	1%	1%	1%	1%
grade 4 events	957	1061	1345	1027	971
	1%	1%	1%	1%	1%
grade 5 events	3882	4203	3560	4488	4129
	5%	5%	3%	5%	5%
grade 6 events	2002	2360	2029	2018	2172
	2%	3%	2%	2%	2%
grade 7 events	62994	61896	71928	68512	66691
	81%	80%	78%	81%	82%

2.2 Compared Parameters

Parameter	Planned	Actual	Parameter	Planned	Actual
Instrument	ACIS	ACIS	Obspar format version number	7	7
Detector	ACIS-01236	ACIS-01236	Obspar file type	PREDICTED	ACTUAL
Grating	NONE	NONE	Obspar update status	NONE	UPDATED
Data mode	VFAINT	VFAINT	CCD I0 on	Y	Y
Observation mode	POINTING	POINTING	CCD I1 on	Y	Y
[deg] Pointing RA	94.215997	94.18211678917032	CCD I2 on	Y	Y
[deg] Pointing Dec	-39.800903	-39.80983502829427	CCD I3 on	Y	Y
[deg] Pointing Roll	168.518162	168.7051600226086	CCD S0 on	N	N
[mm] SIM focus pos	-0.782348	-0.7809083437167272	CCD S1 on	N	N
[mm] SIM defocus	0	0.001439871863259334	CCD S2 on	O1	Y
[mm] SIM translation stage pos	-225.842463	-225.8458576473255	CCD S3 on	N	N
[mm] SIM translation stage offset	-7.75	-7.746595355604228	CCD S4 on	N	N
[s] Observation start time (MET)	489475098.184000	489473965.48709	CCD S5 on	N	N
Observation start date	2013-07-06T05:17:11	2013-07-06T04:59:25	Number of optional ACIS chips dropped	0	0
[s] Observation end time (MET)	489492098.184000	489493543.50065	On-chip summing requested	N	N
Observation end date	2013-07-06T10:00:31	2013-07-06T10:25:43	Subarray requested	NONE	NONE
Read mode	TIMED	TIMED	Alternating exposures requested	N	N
			[s] Primary exposure time	0.000000	3.1

2.3 Aspect





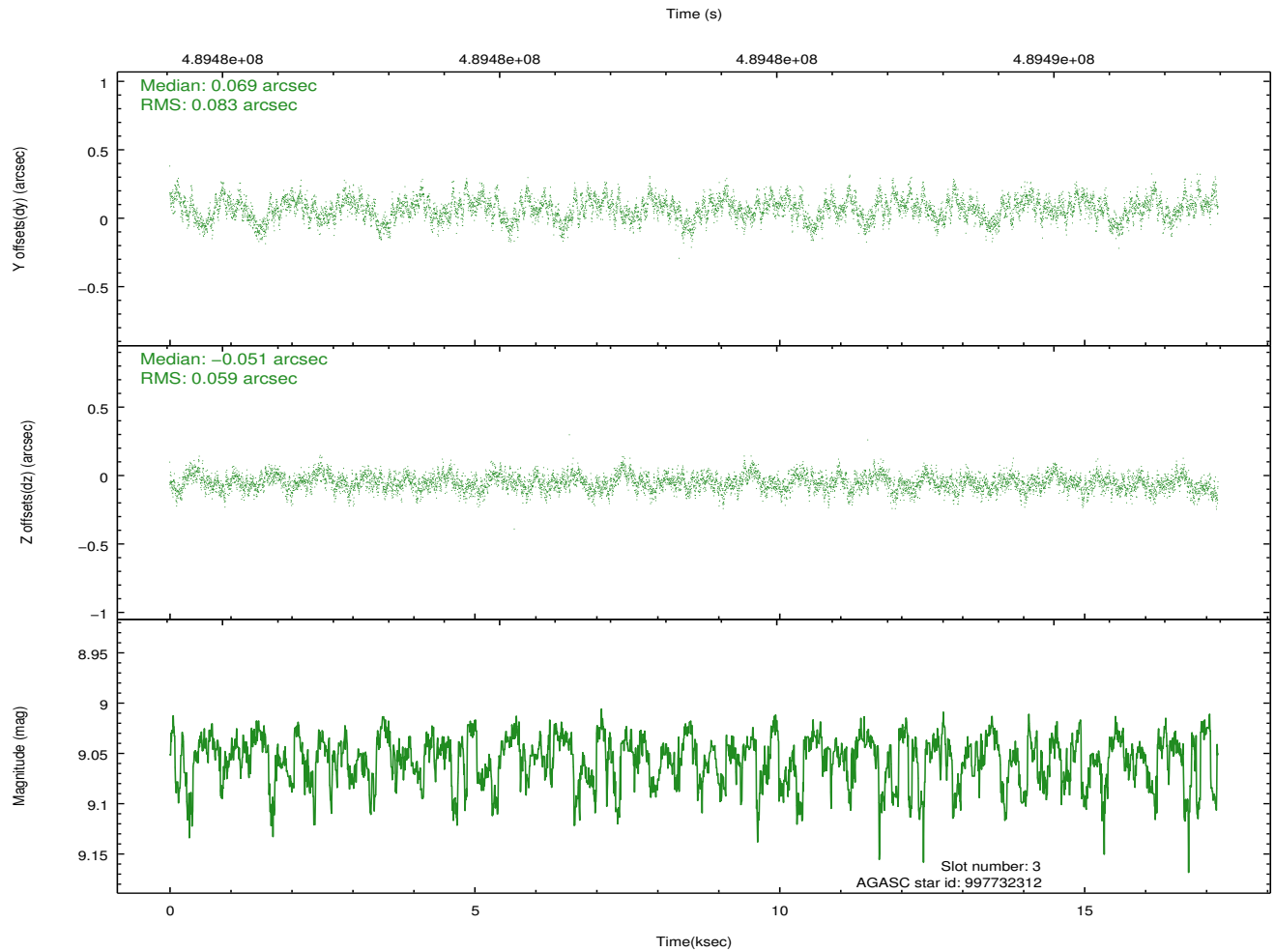
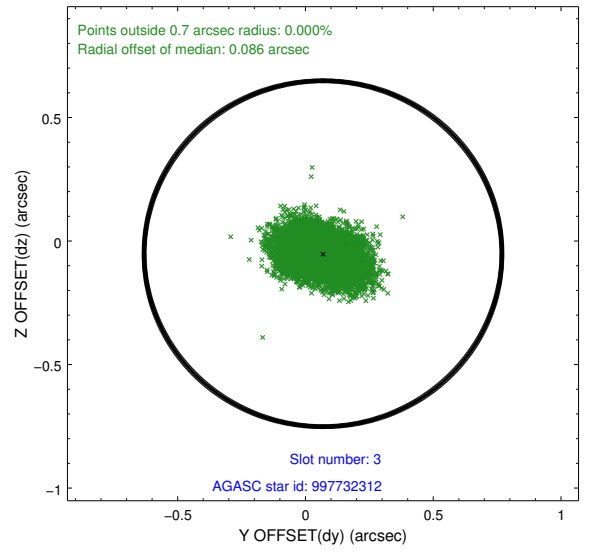
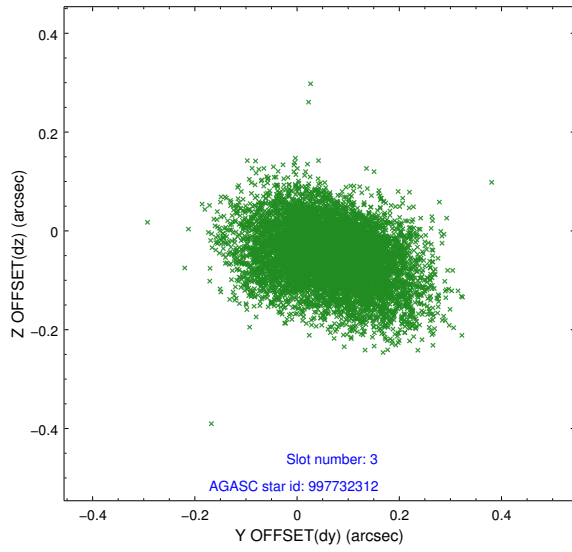
Slot Statistics

slot	status	used	id	mag	n_pts	med_dy	med_dz	dr1	dr2	ra	dec	mean_y	mean_z
0	FID		ACIS-I-1	7.03	4194	0.131	-0.141	0.008	0.015	0.000000	0.000000	928.95	-998.38
1	FID		ACIS-I-4	6.94	4194	-0.035	0.059	0.007	0.012	0.000000	0.000000	2148.46	902.47
2	FID		ACIS-I-5	7.01	4194	-0.193	0.153	0.007	0.013	0.000000	0.000000	-1819.12	899.60
3	GUIDE	used	997732312	9.05	8334	0.069	-0.051	0.108	0.181	93.636852	-39.266951	1963.86	-1556.98
4	GUIDE	used	997733832	8.34	8386	-0.044	0.064	0.085	0.126	93.875626	-39.332142	1264.89	-1463.43
5	GUIDE	used	998245888	9.32	8380	0.144	-0.031	0.100	0.165	94.716550	-40.298567	-1704.07	1485.77
6	GUIDE	used	998254184	8.69	8381	-0.217	-0.038	0.072	0.116	93.970602	-40.171793	395.08	1444.18
7	GUIDE	used	998255976	8.99	8381	0.052	0.050	0.100	0.149	94.792657	-40.242611	-1870.44	1248.15

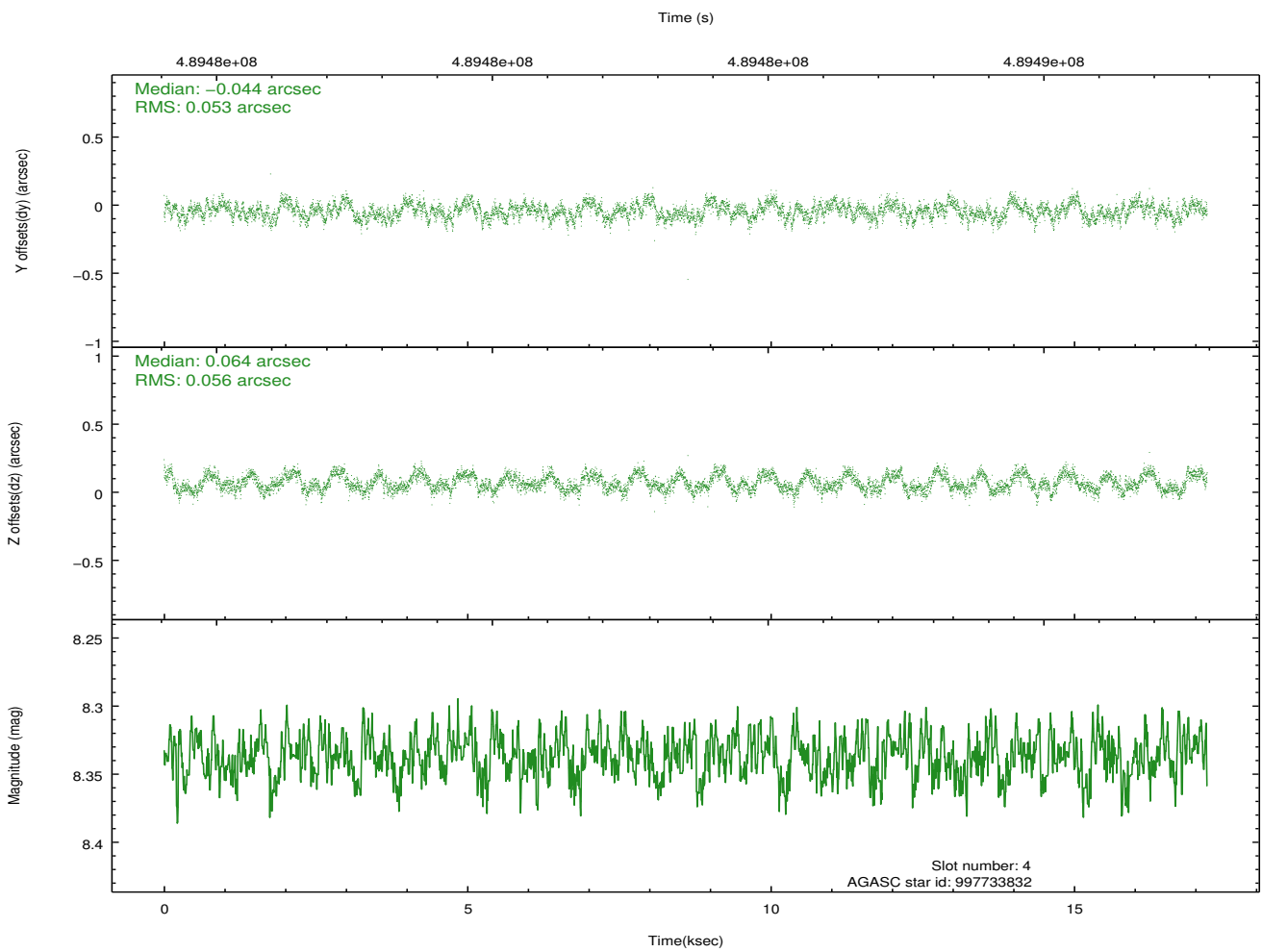
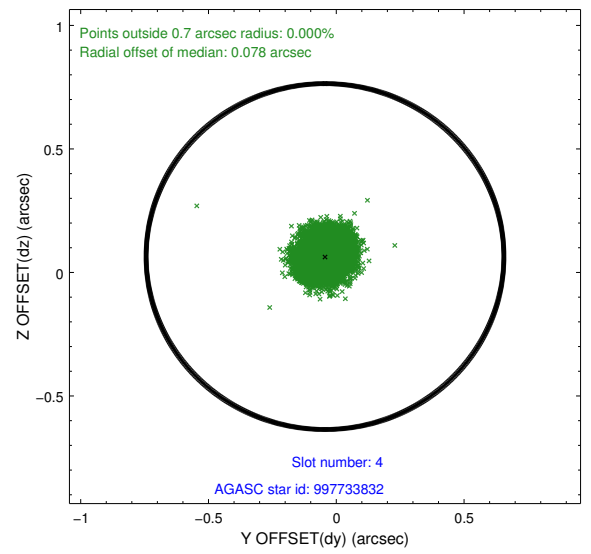
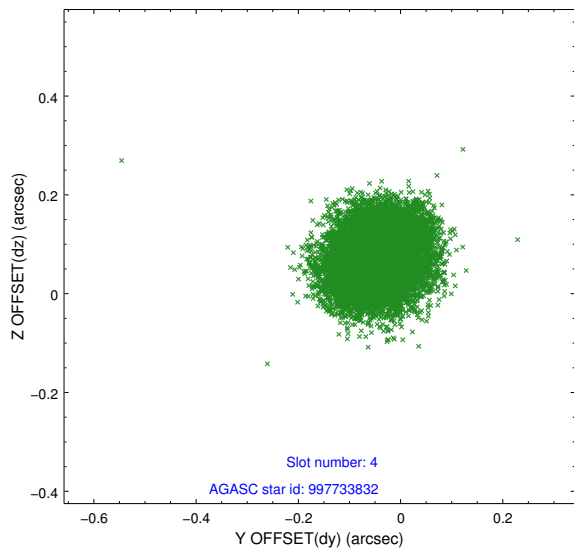
∞

2.4 Star Slots

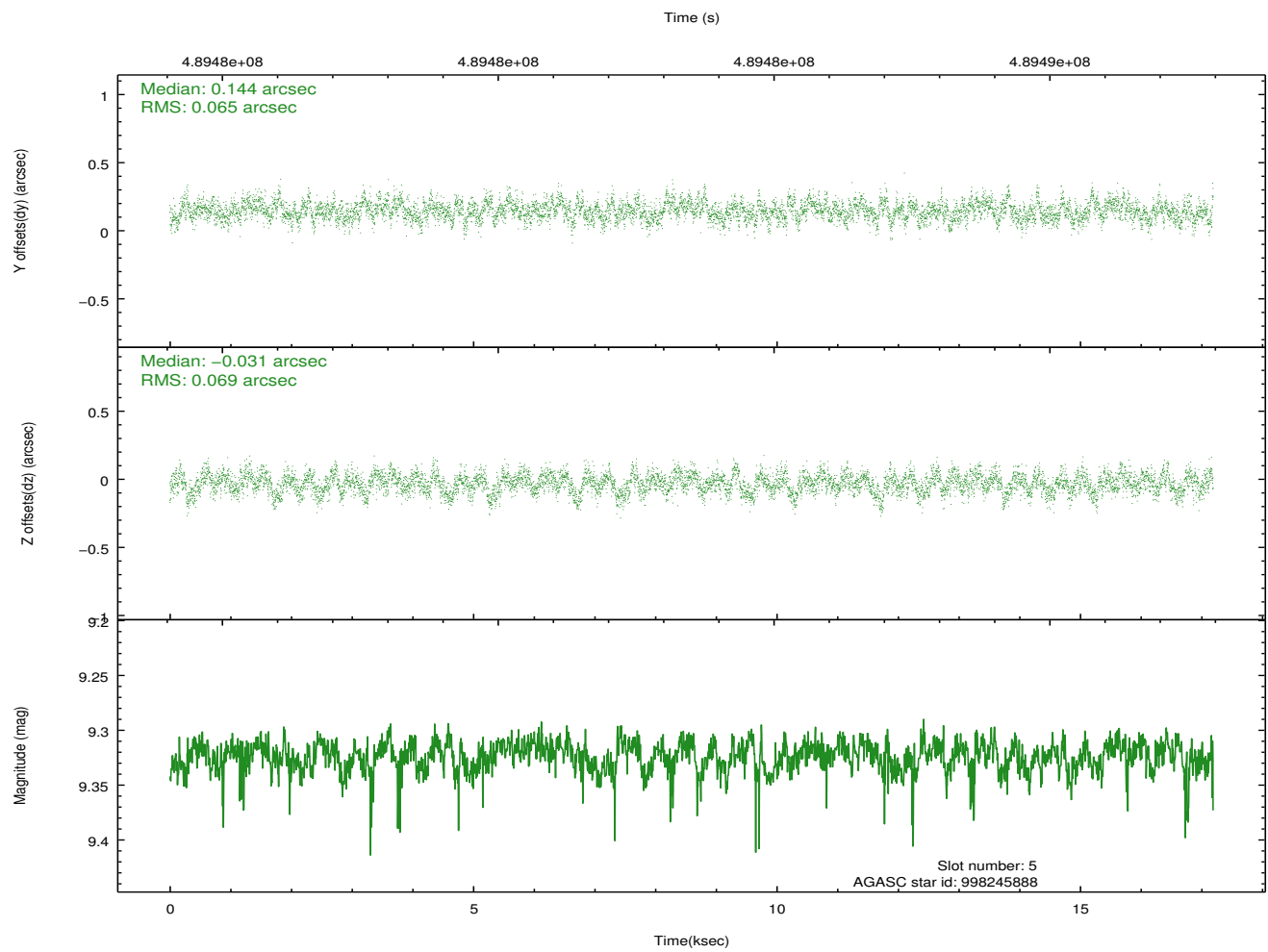
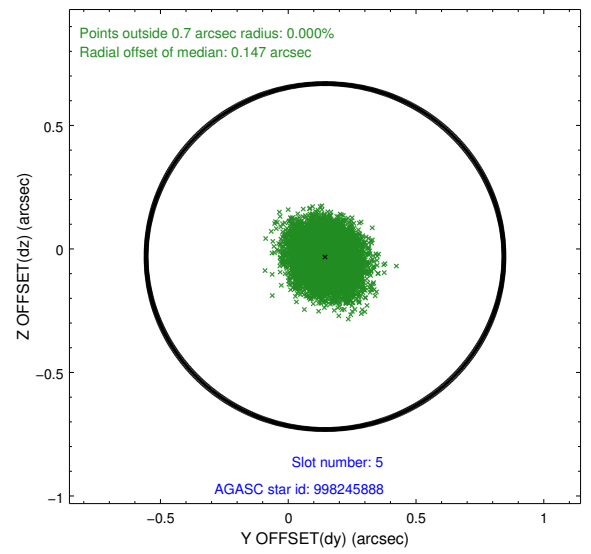
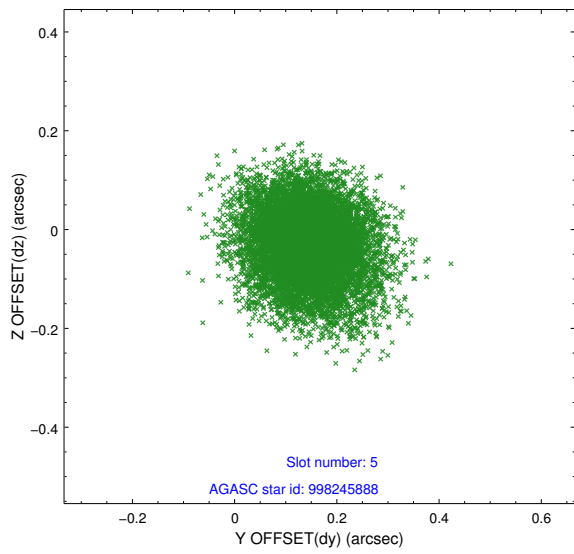
2.4.1 Slot 3



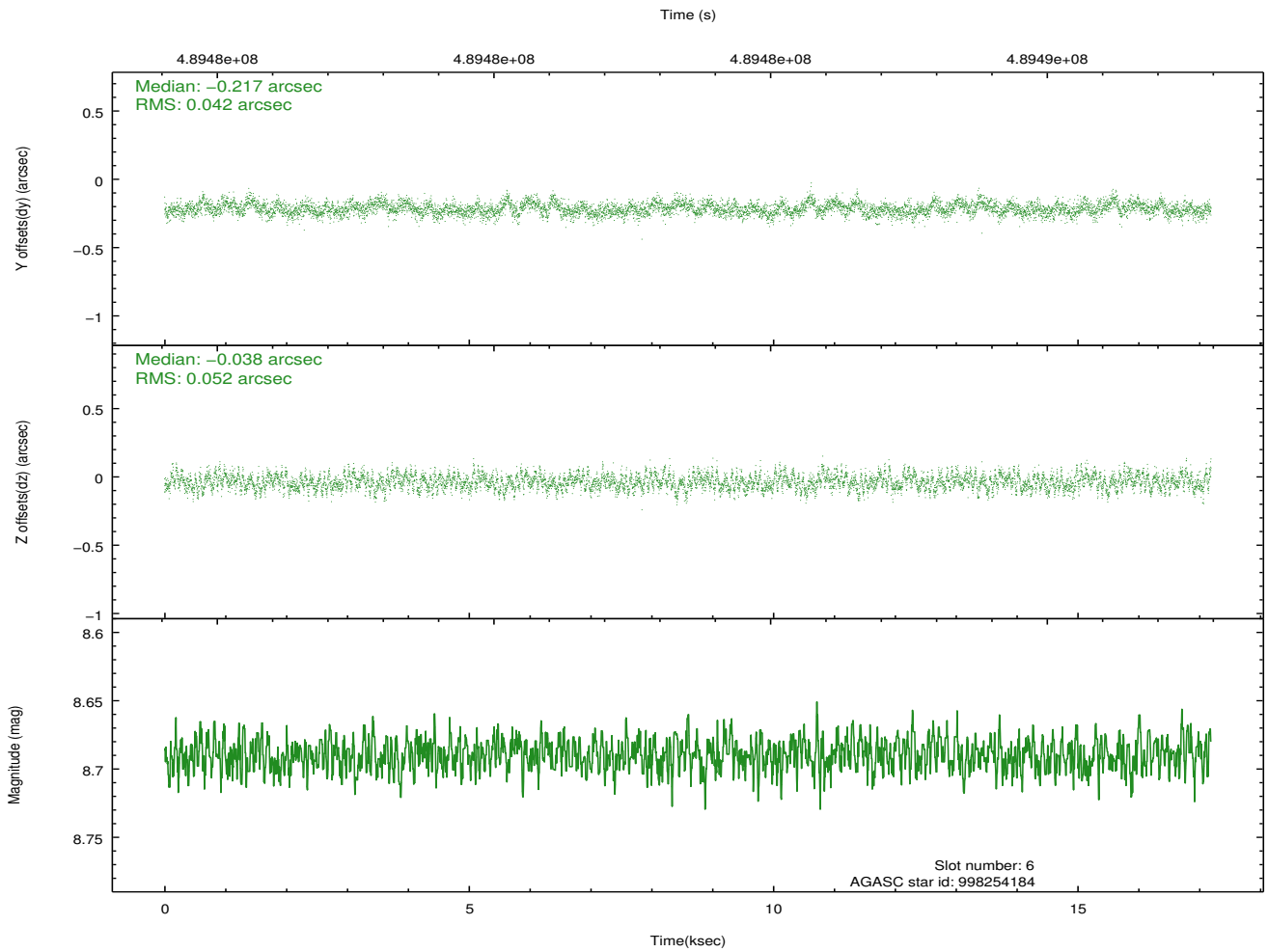
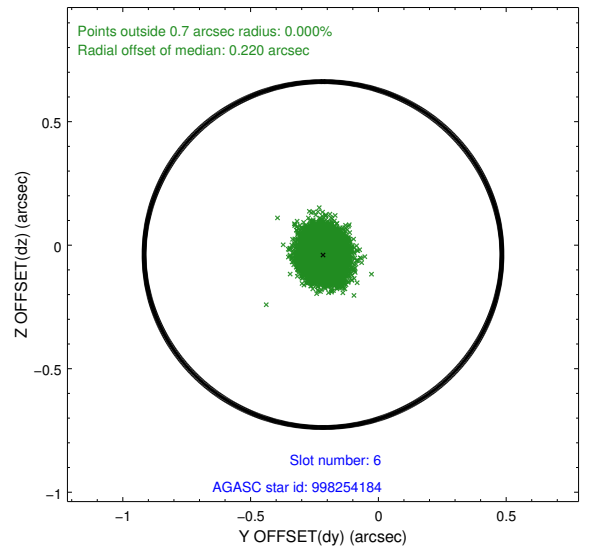
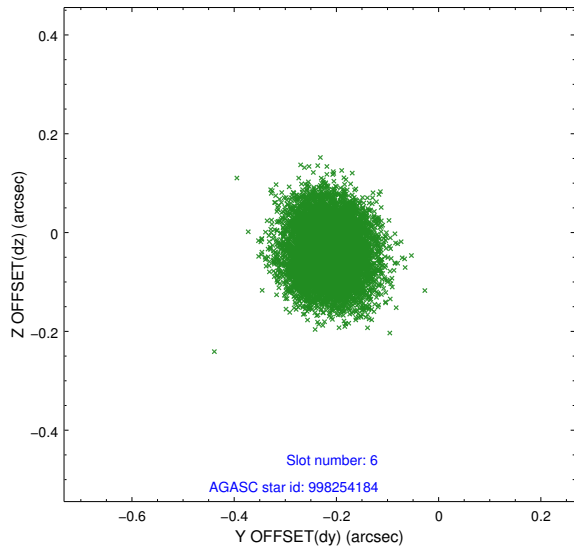
2.4.2 Slot 4



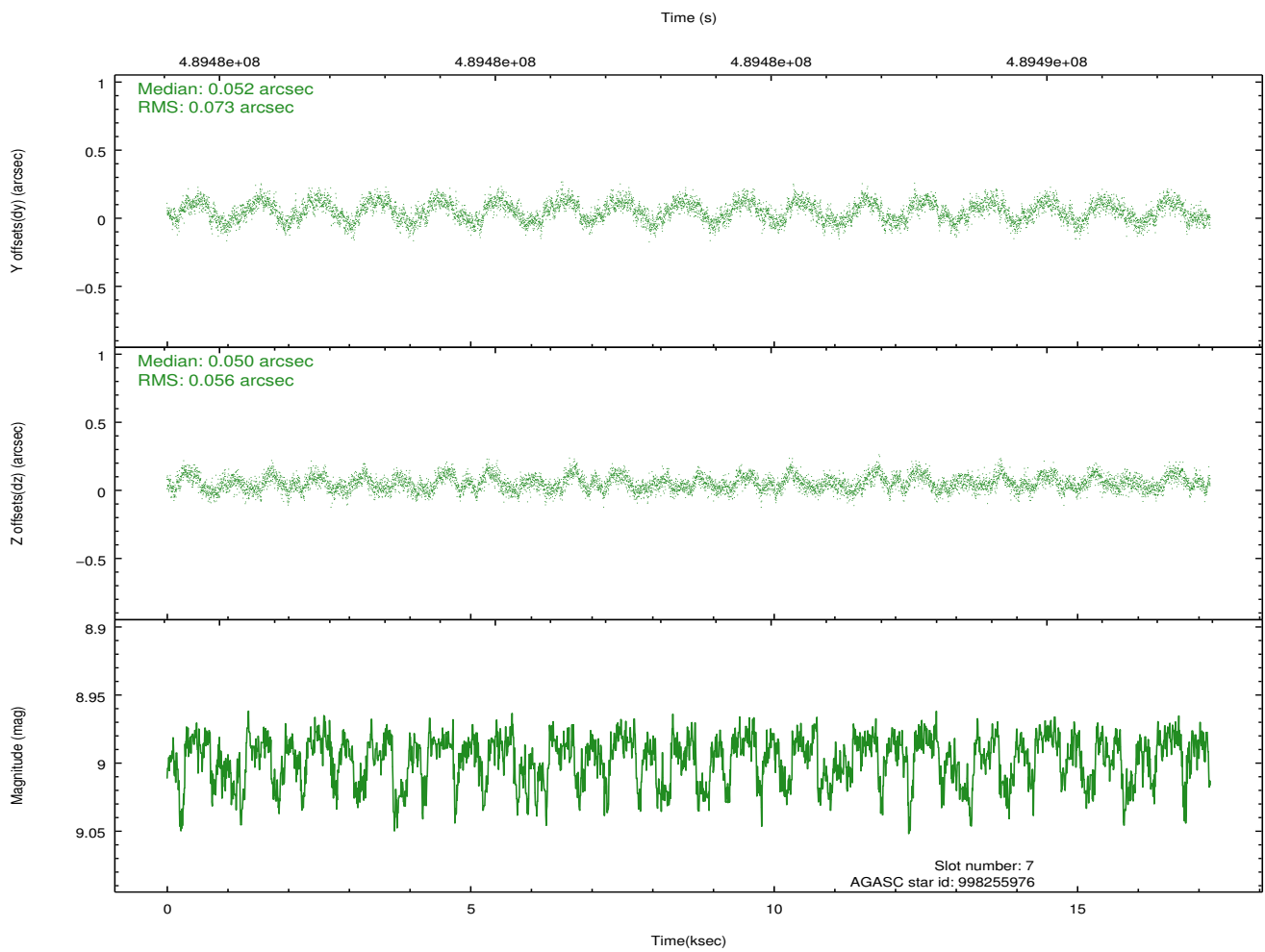
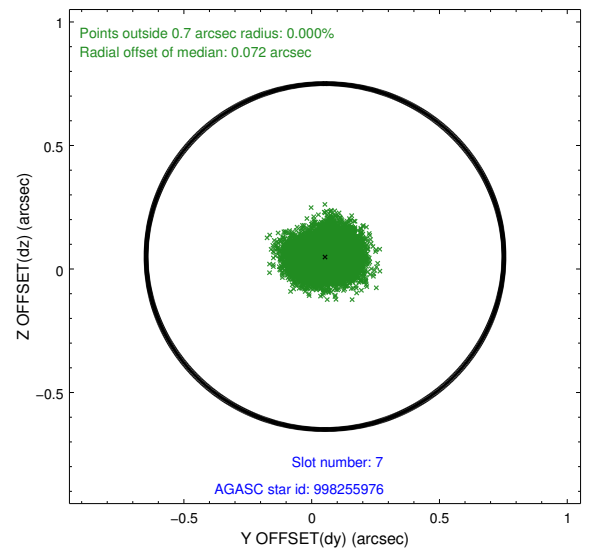
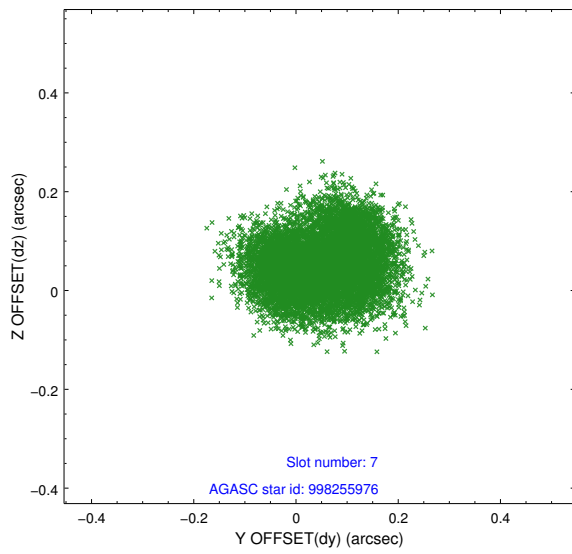
2.4.3 Slot 5



2.4.4 Slot 6

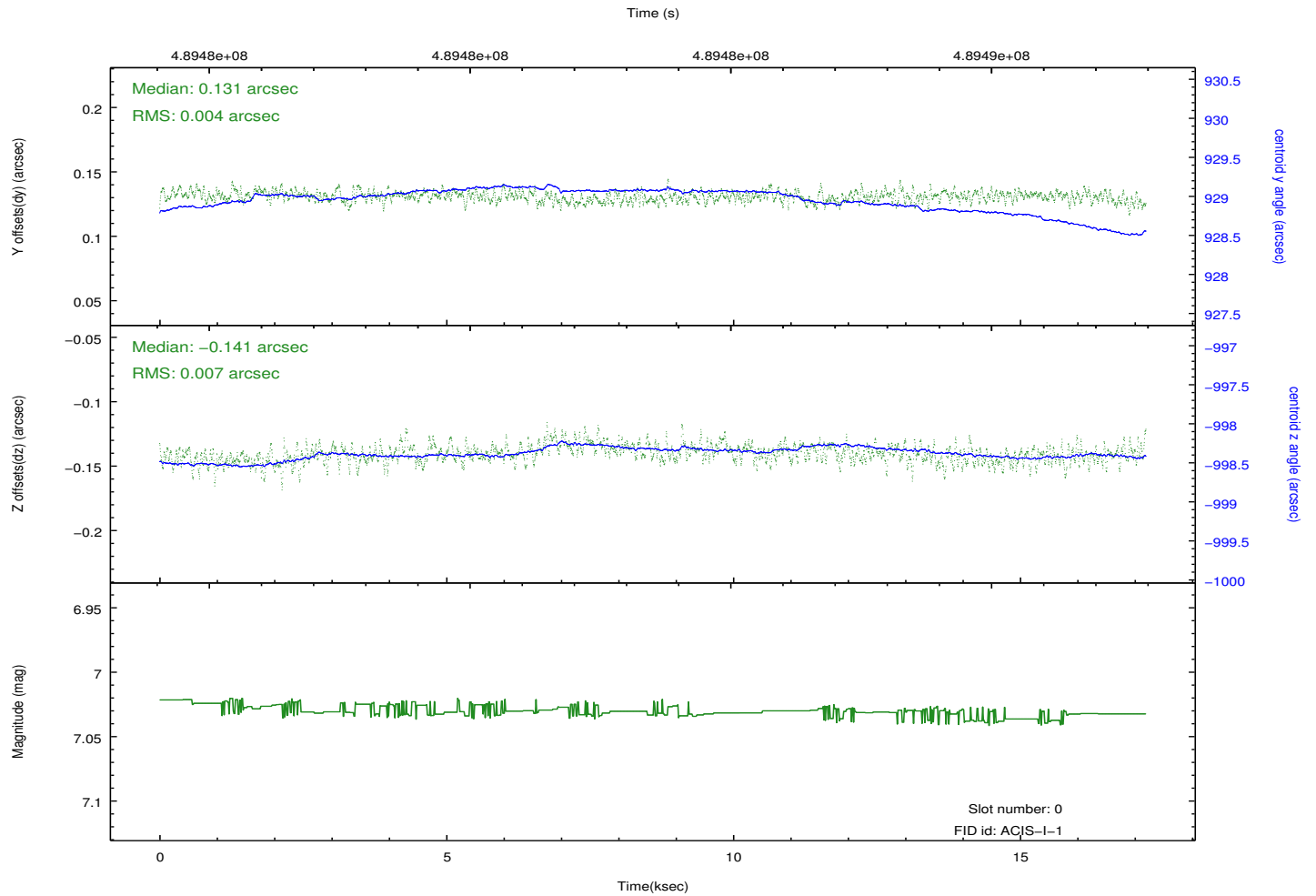
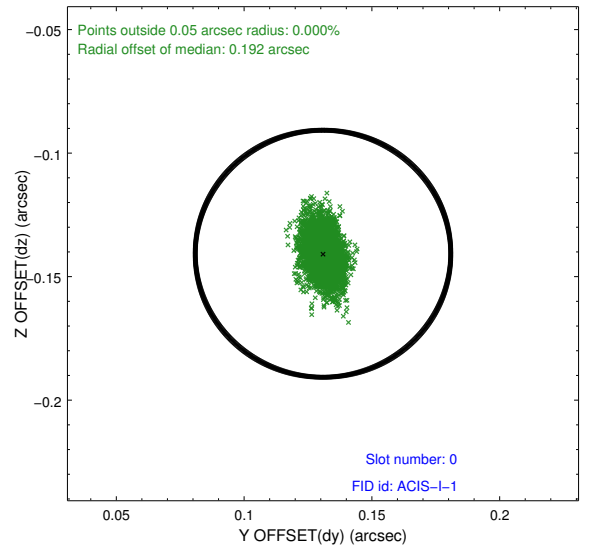
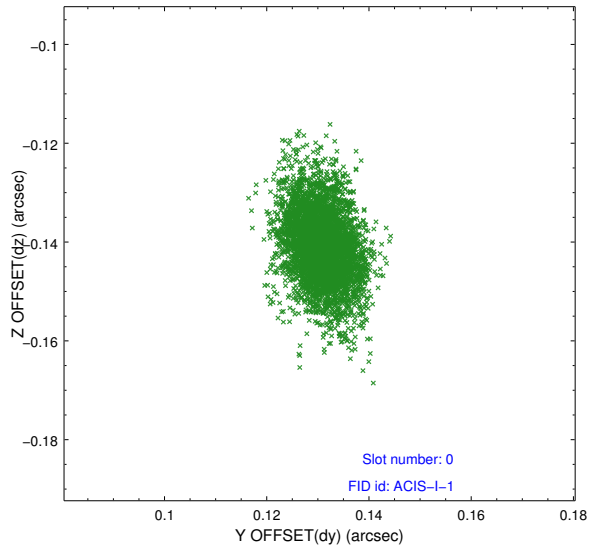


2.4.5 Slot 7

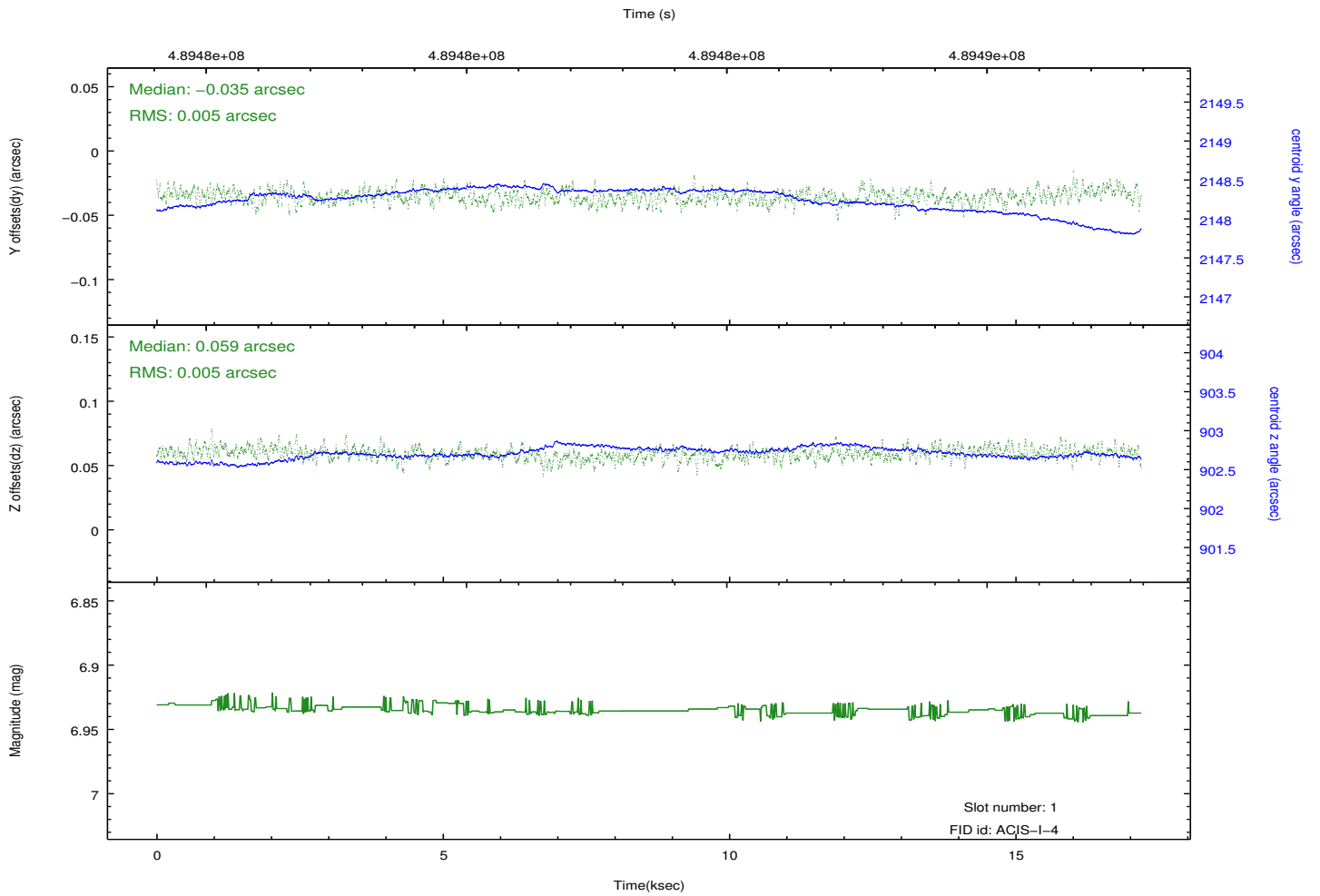
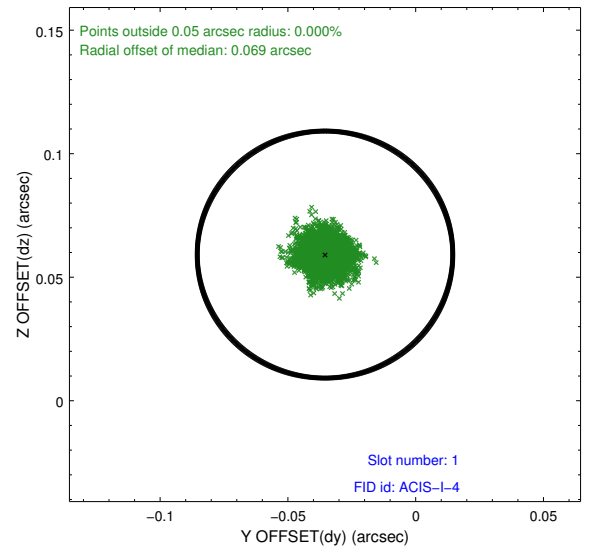
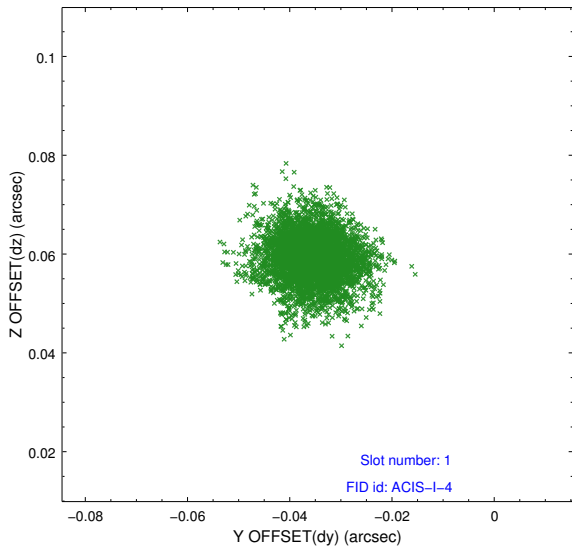


2.5 FID Slots

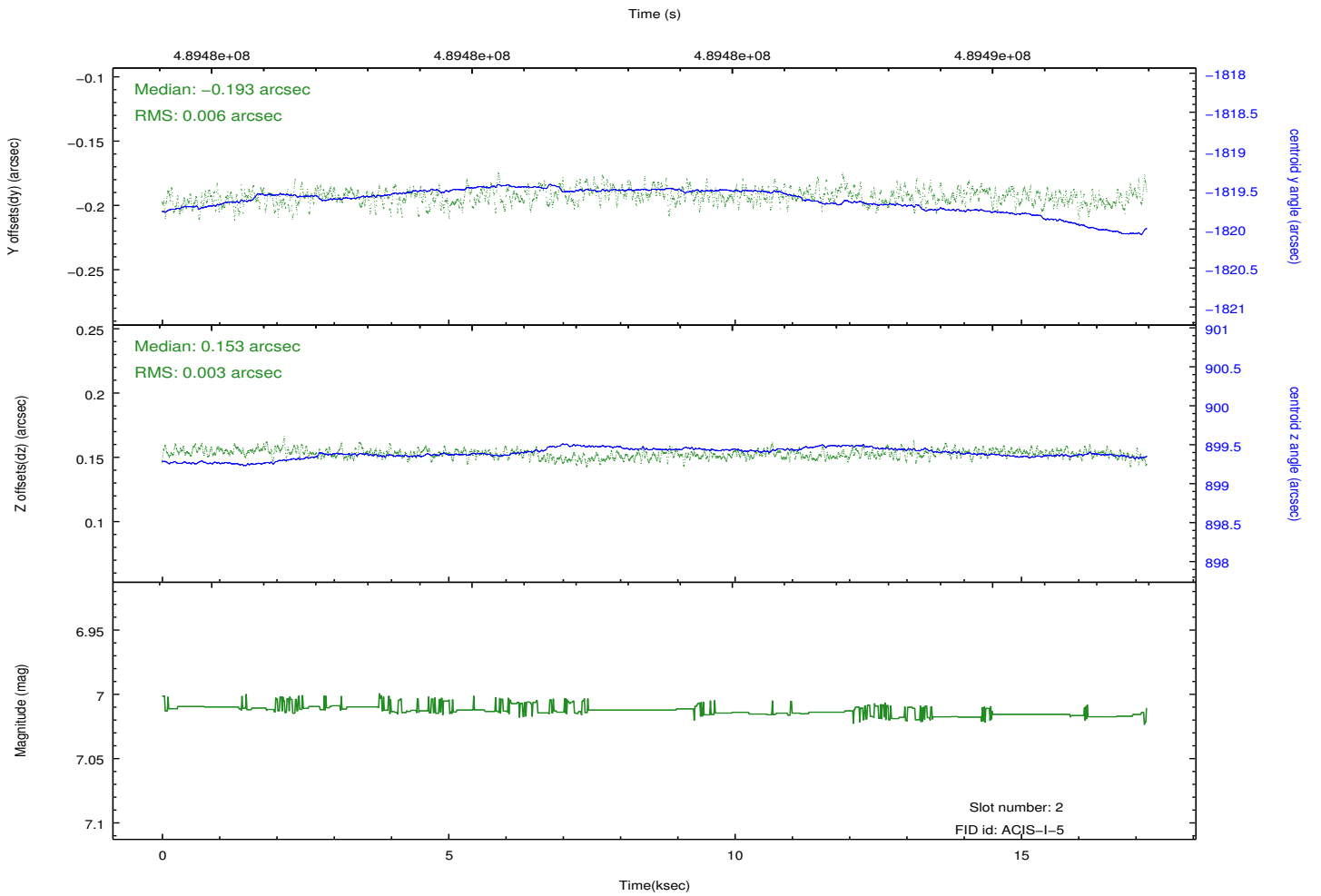
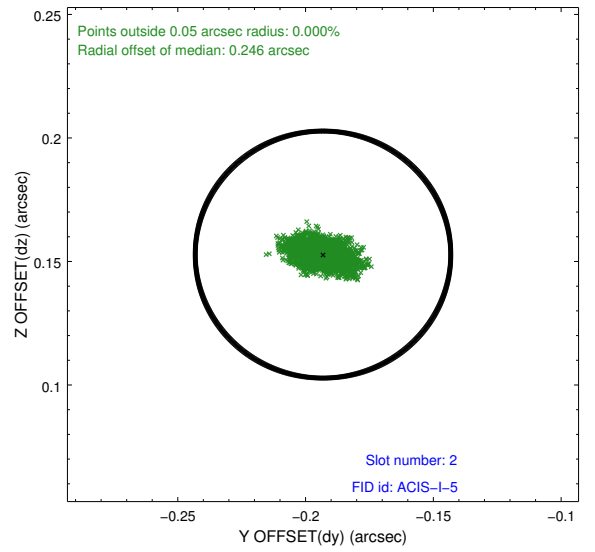
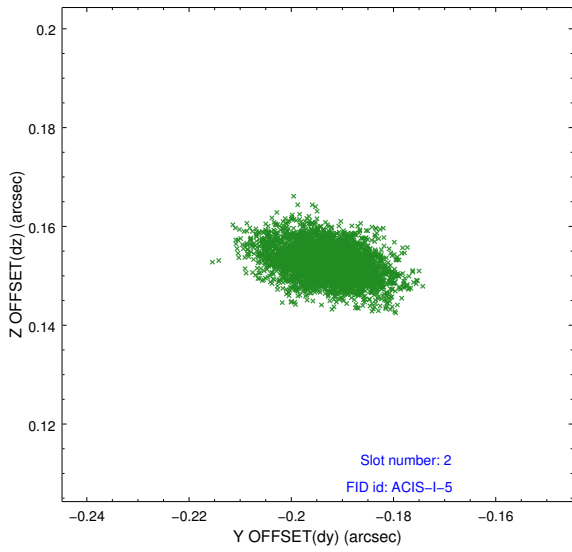
2.5.1 Slot 0



2.5.2 Slot 1



2.5.3 Slot 2



A Summary

A.1 Status

V&V Scientist	Beth Sundheim
V&V Date (YYYY-MM-DD)	2014.12.11
V&V Edition	1
V&V Disposition and Status	OK
V&V Charge Time	17.077859141111

A.2 Comments

These data have been reprocessed with new aspect alignment calibration files that correct small mean offsets (up to 0.4 arcsecs) and improve overall astrometric accuracy. The new calibration was determined using data from the time period being reprocessed and was performed using cross-correlation of X-ray sources with radio and optical counterparts.